

## 300-810 Dumps

# Implementing Cisco Collaboration Applications (CLICA)

<https://www.certleader.com/300-810-dumps.html>



**NEW QUESTION 1**

When Cisco IM and Presence is configured to use automatic fallback, how long does the Server Recovery Manager service wait for a failed service/server to remain active before an automatic fallback is initiated?

- A. 10 minutes
- B. 20 minutes
- C. 30 minutes
- D. 1 hour

**Answer: C**

**Explanation:**

Reference: <https://www.cisco.com/c/en/us/support/docs/unified-communications/unified-communications-manager-im-presence-service/200958-IM-and-Presence-Server-High-Availability.html>

**NEW QUESTION 2**

An engineer must configure a test user mailbox in a newly deployed Cisco Unity Express module. Which console command set reflects the correct configuration in this scenario?

- A. 

```
username testuser create
username testuser pin 12345
username testuser phonenumber 4001
voicemail mailbox owner testuser
```
- B. 

```
username testuser pin 12345
username testuser phonenumber 4001
voicemail mailbox owner testuser
```
- C. 

```
username testuser phonenumber 4001
username testuser pin 12345
voicemail mailbox owner testuser
```
- D. 

```
username testuser create
username testuser pin 12345
username testuser phonenumber 4001 testuser@labdomain.com
voicemail mailbox create testuser
```

**Answer: A**

**NEW QUESTION 3**

Which description of an IdP server is true?

- A. authenticates user credentials
- B. provides user authorization
- C. is an authentication request that is generated by a Cisco Unified Communications application
- D. consists of pieces of security information that are transferred to the service provider for user authentication

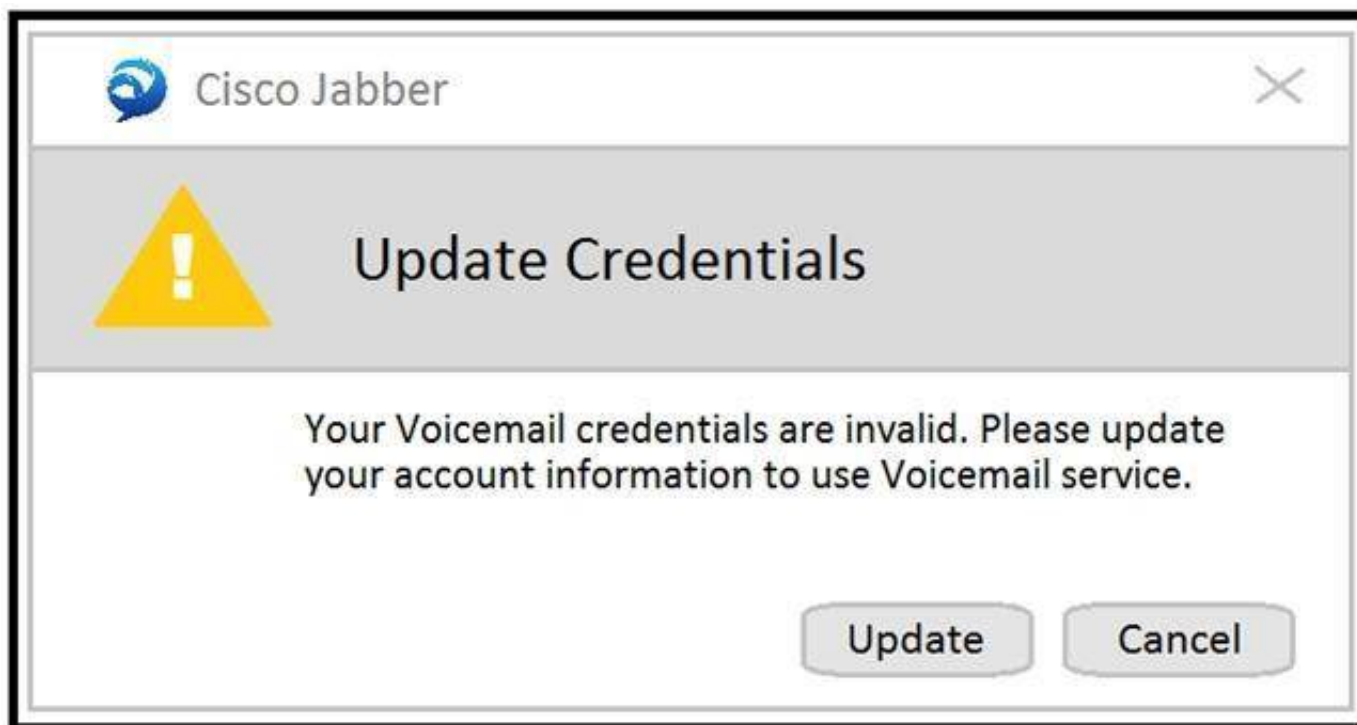
**Answer: D**

**Explanation:**

Reference: [https://www.cisco.com/c/en/us/td/docs/voice\\_ip\\_comm/cust\\_contact/contact\\_center/crs/express\\_12\\_5/features/guide/uccx\\_b\\_125features-guide/uccx\\_b\\_125features-guide\\_chapter\\_01.html](https://www.cisco.com/c/en/us/td/docs/voice_ip_comm/cust_contact/contact_center/crs/express_12_5/features/guide/uccx_b_125features-guide/uccx_b_125features-guide_chapter_01.html)

**NEW QUESTION 4**

Refer to the exhibit.



Which action allows a remote Cisco Jabber user utilizing Mobile and Remote Access to automatically log in to a Cisco Unity Connection voicemail box via OAuth?

- A. Add CUCM under System Settings > Authz Servers in Cisco Expressway-E.
- B. Add CUCM under System Settings > Authz Servers in Cisco Expressway-C.
- C. Add CUCM under System Settings > Authz Servers in Cisco Unity.
- D. Add CUCM under System Settings > Authz Servers in Cisco Unity Connection.

**Answer:** D

**Explanation:**

Reference: <https://community.cisco.com/t5/unified-communications/jabber-mra-unity-voice-mail-integration-issue/td-p/3195653>

#### NEW QUESTION 5

Which function of the Cisco IM and Presence high availability solution is true?

- A. When the server has been restored to a normal state, user sessions remain on the backup server.
- B. When an event takes place, the end user sessions are not moved from the failed server to the backup.
- C. When the server has been restored, the server automatically fails back.
- D. When a high availability event takes place, the end user sessions are moved from the failed server to the backup.

**Answer:** D

**Explanation:**

Reference: <https://www.cisco.com/c/en/us/support/docs/unified-communications/unified-communications-manager-im-presence-service/200958-IM-and-Presence-Server-High-Availability.html>

#### NEW QUESTION 6

Refer to the exhibit.

```
Response:
HTTP/1.1 400 Bad Request
Strict-Transport-Security: max-age=31536000
X-Frame-Options: DENY
X-Content-Type-Options: nosniff
Set-Cookie: JSESSIONID=1233ADC137E591GE144792F38123AB09; Patch=/idb/; Secure; HttpOnly
TrackingID: FOS_d0ac0d7b-f4e4-4d83-ba27-d4252e310b88
Cache-Control: no-store
Date: Mon, 06 Jan 2018 10:30:00 GMT
Accept-Ranges: bytes
Server:
Vary: Accept-Charset, Accept-Encoding, Accept-Language, Accept
Access-Control-Allow-Credentials: true
Access-Control-Allow-Headers: Accept, Authorization, Content-Type, TrackingID
Access-Control-Allow-Methods: POST, PUT, PATCH, HEAD, GET, TRACE, CONNECT, OPTIONS, DELETE
Pragma: no-cache
Content-Type: application/json; charset=UTF-8
Connection: close
Content-Length: 176

{"error_description": "The refresh token provided is expired, revoked, malformed, or invalid.", "error": "invalid_request", "trackingID": "FOS_a12b123c-d123-e123-a127-b420be310188"}
```

Apple Push Notification integration is configured in a Cisco Unified IM and Presence deployment and has been working property. Administrators now report the error "Push notification settings cannot be configured. 400 Bad Request." in the GUI, and HTTP logs are displaying the errors that are shown in the exhibit. Which action solves this issue?

- A. Fix the network connectivity to Apple iCloud.
- B. Reboot the IM&P cluster.
- C. Change the HTTP proxy settings to remove errors in request syntax.
- D. Update Refresh Token Manually.



Answer: D

Explanation:

Reference: [https://www.cisco.com/c/en/us/td/docs/voice\\_ip\\_comm/cucm/push\\_notifications/cucm\\_b\\_push-notifications-deployment-guide.pdf](https://www.cisco.com/c/en/us/td/docs/voice_ip_comm/cucm/push_notifications/cucm_b_push-notifications-deployment-guide.pdf)

NEW QUESTION 7

SAML SSO is enabled in Cisco Unified Communications Manager. What happens when a browser-based client attempts to access a protected resource on a service provider?

- A. The browser follows the redirect and issues an HTTPS GET request to the IdP.
- B. The IdP checks for a valid browser session.
- C. The service provider generates a SAML authentication request.
- D. The SAML request is maintained as a query parameter in the GET request.

Answer: C

Explanation:

Reference: [https://www.cisco.com/c/en/us/td/docs/voice\\_ip\\_comm/cucm/SAML\\_SSO\\_deployment\\_guide/12\\_5\\_1/cucm\\_b\\_saml-ss0-deployment-guide-12\\_5/cucm\\_b\\_saml-ss0-deployment-guide-12\\_5\\_chapter\\_01.html](https://www.cisco.com/c/en/us/td/docs/voice_ip_comm/cucm/SAML_SSO_deployment_guide/12_5_1/cucm_b_saml-ss0-deployment-guide-12_5/cucm_b_saml-ss0-deployment-guide-12_5_chapter_01.html)

NEW QUESTION 8

Refer to the exhibit.

```
[csf.cert.] [csf::cert::BaseCertVerifier:doVerifyCertificate] - About to verify the certificate.
[csf.cert.win32] [csf::cert::Win32CertVerifier:loadCertificateChain] - Certificate Chain status 0x20
[csf.cert.win32] [csf::cert::Win32CertVerifier:verifySslPolicy] - Ignoring errors due to Invalid CN
[csf.cert.win32] [csf::cert::Win32CertVerifier:verifyPolicies] - SSL Policy status 0x2148204809
[csf.cert.win32] [csf::cert::win32CertVerifier:verifyPolicies] - Basic Constraints Policy status 0x0
[csf.cert.win32] [csf::cert::win32CertVerifier:verifyCertificate] - Certificate validation response is 'invalid'
[csf.cert.] [csf::cert::BaseCertVerifier:doVerifyCertificate] - Result of platform cert verification: [UNTRUSTED_ROOT]
[csf.cert.] [csf::cert::BaseCertVerifier:checkIdentity] - About to check for an Identity Match.
[csf.cert.xmpp] [csf::cert::XmppCertVerifier:checkIdentifier] - Verifying XMPP Identity 'example.com'
[csf.cert.utils] [csf::cert::AltNameParserImpl:verifyXmpp] - Xmpo match was not found for: 'example.com'
[csf.cert.utils] [csf::cert::AltNameParserImpl:verify] - Match for 'example.com' found in dnsNames index: 1
[csf.cert.] [csf::cert::BaseCertVerifier::checkIdentifiers] - Verification of identity succeeded. Matched identifier : 'example.com'
[csf.diagnostics] [CSFDiagnostics::DiagnosticsImpl::AddRecord] - Add record task enqueued: example.com
[csf.common.PolicySet] [csf::common:PolicySet::getPolicy] - Successfully found Policy with nature IGNORE_INVALID_CERT_CONDITION
[IGNORE_REVOCATION_INFO_UNAVAILABLE_ERRORS]
[csf.cert.] [csf::cert::BaseCertVerifier::applyIgnoreInvalidCertConditionPolicy] - About to enforce ignore invalid cert condition policy.
[csf.cert] [csf::cert::IgnoreInvalidCertConditionPolicy::removeIgnoredStatuses] - No statuses have been removed from the verification status.
[csf.cert] [csf::cert::IgnoreInvalidCertConditionPolicy::enforce] - Policy enforced
[csf.cert.] [csf::cert::BaseCertVerifier::verifyCertificateAsync] - Certificate initially verified, result: FAILURE
[csf.cert] [csf::cert::CertificateDataImpl::parseSubjectCNField] - size of Subject CN field : 16
[csf.cert] [csf::cert::CertificateDataImpl::parseSubjectCNField] - Sybject CN field : impa.example.com
[csf.common.PolicySet] [csf::common:PolicySet::getPolicy] - Sucessfully found Policy with nature INVALID_CERT_MANAGEMENT [PROMPT_USER]
```

Users report that they are prompted to accept server certificates when they initially run Cisco Jabber. An engineer removes these prompts to prevent confusion. Which statement about this scenario is true?

- A. Presentation of the certificates can be disabled by setting up Cisco IM&P servers into nonsecure mode.
- B. Nothing can be done to resolve this issue because certificates must be accepted by each Jabber user, per Cisco policy.
- C. These certificates are self-signed certificates, so they must be added manually to the user OS certificate stores.
- D. The behavior is a security breach because certificates are considered untrusted and as not coming from Cisco Collaboration servers.

Answer: C

Explanation:

Reference: <https://www.cisco.com/c/en/us/support/docs/unified-communications/jabber-windows/116637-trouble-jabber-00.html>

NEW QUESTION 9

Refer to the exhibit.

High Availability			
<input checked="" type="checkbox"/> Enable High Availability			
Monitored Server	Assigned Users	Active Users	Server State
IMPPub.CiscoLiveUS.net	4	0	Initializing
IMPSub.CiscoLiveUS.net	0	0	Initializing

After configuration of the Cisco IM&P cluster in high-availability mode, both IM&P servers remain in the initializing state. Which two actions ensure normal operations of this IM&P high-availability cluster? (Choose two.)

- A. Clear the Enable High Availability check box in the Presence Redundancy Group configuration.
- B. Confirm that Cisco Presence Engine, Cisco XCP Router, and Cisco DB services are up and running on both IM&P servers.
- C. Restart the Server Recovery Manager service in Cisco Unified Serviceability – Network Services on both IM&P servers.
- D. Verify that the Cisco XCP SIP Federation Connection Manager service is running.
- E. Ensure that an equal number of users are assigned to each IM&P server.

**Answer:** CE

**Explanation:**

Reference: [https://www.cisco.com/c/en/us/td/docs/voice\\_ip\\_comm/cucm/im\\_presence/configAdminGuide/10\\_5\\_1/CUP0\\_BK\\_CE43108E\\_00\\_config-admin-guide-imp-105/CUP0\\_BK\\_CE43108E\\_00\\_config-admin-guide-imp105\\_chapter\\_010010.html](https://www.cisco.com/c/en/us/td/docs/voice_ip_comm/cucm/im_presence/configAdminGuide/10_5_1/CUP0_BK_CE43108E_00_config-admin-guide-imp-105/CUP0_BK_CE43108E_00_config-admin-guide-imp105_chapter_010010.html)

**NEW QUESTION 10**

Which Cisco Unified Communications Manager menu path is used to configure Cisco IM and Presence Server High Availability?

- A. System > LDAP > LDAP Directory
- B. System > Geolocation Configuration
- C. System > Presence Redundancy Groups
- D. System > Server

**Answer:** C

**Explanation:**

Reference: <https://www.cisco.com/c/en/us/support/docs/unified-communications/unified-communications-manager-im-presence-service/200958-IM-and-Presence-Server-High-Availability.html#anc4>

**NEW QUESTION 10**

Which two Cisco Unity Connection logs are used to troubleshoot issues with Message Waiting Indicators? (Choose two.)

- A. Connection IMAP Server
- B. Connection Mailbox Sync
- C. Connection Notifier
- D. Connection Message Transfer Agent
- E. Connection Conversation Manager

**Answer:** DE

**NEW QUESTION 15**

When trying to send a call out of Cisco Unity Connection, what happens when enabling the transfer to an alternate contact number, located under caller input?

- A. The restriction table is checked when an administrator changes the extension number via the Cisco Unity Connection admin page.
- B. The restriction table is not checked when an administrator changes the extension number via the Cisco Unity Connection admin page.
- C. The restriction table is not checked when a user changes the extension number via a TUI conversation.
- D. The restriction table is not checked when a user changes extension number via the Cisco Unity Connection Cisco PCA page.

**Answer:** B

**Explanation:**

Reference: <https://www.cisco.com/c/en/us/support/docs/unified-communications/unity-connection/117559-probsol-transferfailure-00.html>

**NEW QUESTION 17**

Which statement about SIP federation between Cisco Unified Communications IM and Presence and Microsoft Skype for Business is true?

- A. Add the federated user as a contact in Jabber to view its presence status.
- B. The role of SIP Proxy service is to process the XMPP packet in from Jabber and convert it to SIP.
- C. TLS is optional.
- D. Use of directory URI as an IM addressing scheme is not supported.

**Answer:** A

**Explanation:**

Reference: [https://www.cisco.com/c/en/us/td/docs/voice\\_ip\\_comm/cucm/im\\_presence/interdomain\\_federation/12\\_5\\_1/cup0\\_b\\_interdomain-federation-1251/cup0\\_b\\_interdomain-federation-1251\\_chapter\\_01000.html](https://www.cisco.com/c/en/us/td/docs/voice_ip_comm/cucm/im_presence/interdomain_federation/12_5_1/cup0_b_interdomain-federation-1251/cup0_b_interdomain-federation-1251_chapter_01000.html)

**NEW QUESTION 20**

Secure XMPP communication is required for XMPP federation with external domains and the Cisco IM and Presence. Which certificate is used for XMPP interdomain federation when connecting to an externally federated domain?

- A. cup
- B. cup-xmpp
- C. cup-xmpp-s2s
- D. Tomcat

**Answer:** C

**Explanation:**

Reference: [https://www.cisco.com/c/dam/en/us/td/docs/telepresence/infrastructure/vcs/config\\_guide/X8-2/XMPP-Federation-with-Cisco-VCS-and-IM-and-Presence-Service.pdf](https://www.cisco.com/c/dam/en/us/td/docs/telepresence/infrastructure/vcs/config_guide/X8-2/XMPP-Federation-with-Cisco-VCS-and-IM-and-Presence-Service.pdf)

**NEW QUESTION 25**

Which statement describes a role of AXL communications in the BLF Plug-in Service of the Cisco Unified Attendant Console?

- A. The AXL communications allow registered attendants to log in to Cisco Unified Communications Manager and receive calls.  
B. The AXL communications enable Device Resolution Manager to resolve the device statuses of operator and system devices.  
C. The AXL communications is required after installation to verify that the specified CTI manager or managers and Cisco Unified Attendant Console versions match.  
D. The AXL communications is required after installation to verify that the specified CTI manager or managers and Cisco Unified CM versions.

**Answer:** D

**Explanation:**

Reference: [https://www.cisco.com/c/dam/en/us/td/docs/voice\\_ip\\_comm/cucmac/cuaca/12\\_0\\_4/design\\_guides/CUACA\\_DG\\_120401.pdf](https://www.cisco.com/c/dam/en/us/td/docs/voice_ip_comm/cucmac/cuaca/12_0_4/design_guides/CUACA_DG_120401.pdf)

**NEW QUESTION 29**

Refer to the exhibit.

The screenshot displays two configuration panels for routing rules. The top panel, titled 'Direct Routing Rules in Descending Order of Precedence', contains a table with columns: Display Name, Status, Dialed Number, Calling Number, and Phone System. It lists four rules: 'NewYork\_AA' (Active, 11112222), 'Attempt Sign In' (Active), 'Chicago\_AA' (Active, 22221111), and 'Opening Greeting' (Active). The bottom panel, titled 'Forwarded Routing Rules in Descending Order of Precedence', contains a table with columns: Display Name, Status, Dialed Number, Calling Number, and Forwarding Station. It lists four rules: 'Attempt Forward' (Active), 'Dallas\_AA' (Active, 2222), 'Arizona\_AA' (Active, 11112222), and 'Opening Greeting' (Active). Both panels include 'Delete Selected', 'Add New', and 'Change Order' buttons.

	Display Name	Status	Dialed Number	Calling Number	Phone System
<input type="checkbox"/>	NewYork_AA	Active	11112222		
<input type="checkbox"/>	Attempt Sign In	Active			
<input type="checkbox"/>	Chicago_AA	Active	22221111		
<input type="checkbox"/>	Opening Greeting	Active			

	Display Name	Status	Dialed Number	Calling Number	Forwarding Station
<input type="checkbox"/>	Attempt Forward	Active			
<input type="checkbox"/>	Dallas_AA	Active	2222		
<input type="checkbox"/>	Arizona_AA	Active	11112222		
<input type="checkbox"/>	Opening Greeting	Active			

Calls that are not answered by the user are for the location. If the user at extension 11112222 does not have a voice mailbox, which rule is utilized when Cisco Unity Communication receives the forwarded call?

- A. NewYork\_AA  
B. Attempt Sign In  
C. Arizona\_AA  
D. Opening\_Greeting

**Answer:** C

**NEW QUESTION 34**

How is automatic fallback enabled on a Cisco IM and Presence server?

- A. In IM and Presence Service Parameter Configuration > Cisco Server Recovery Manager, change the Failover parameter to True.  
B. In Communications Manager Service Parameter Configuration > Cisco Server Recovery Manager, change the Enable Automatic Fallback parameter to True.  
C. Automatic fallback is enabled by default.  
D. In the Presence Redundancy Group Configuration > Cisco Unified Communications Manager, check the Enable Automatic Fallback parameter.

**Answer:** B

**Explanation:**

Reference: <https://www.cisco.com/c/en/us/support/docs/unified-communications/unified-communications-manager-im-presence-service/200958-IM-and-Presence-Server-High-Availability.html>

**NEW QUESTION 37**

.....

## Thank You for Trying Our Product

\* 100% Pass or Money Back

All our products come with a 90-day Money Back Guarantee.

\* One year free update

You can enjoy free update one year. 24x7 online support.

\* Trusted by Millions

We currently serve more than 30,000,000 customers.

\* Shop Securely

All transactions are protected by VeriSign!

**100% Pass Your 300-810 Exam with Our Prep Materials Via below:**

<https://www.certleader.com/300-810-dumps.html>