

Exam Questions 300-615

Troubleshooting Cisco Data Center Infrastructure (DCIT)

<https://www.2passeasy.com/dumps/300-615/>



NEW QUESTION 1

Refer to the exhibit. After a failover occurs, which two actions must be performed on Switch-B to manually preempt the operational primary role back to Switch-A? (Choose two.) A. Configure the local vPC role priority to have a lower value than Switch-A.

- A. Configure the local vPC role priority to have a higher value than Switch-A.
- B. Disable and then re-enable the vPC peer-keepalive link.
- C. Configure the local vPC role priority to have the same value as Switch-A.
- D. Disable and then re-enable the vPC peer link.

Answer: BE

NEW QUESTION 2

The Cisco Nexus switch is connected to a peer switch that is not running Cisco NX-OS. The switches are connected using port channel and are experiencing packet loss. Which action should be performed on the Cisco Nexus switch ports to resolve this issue?

- A. Turn on lacp suspend-individual.
- B. Turn on lacp graceful-convergence.
- C. Turn off lacp graceful-convergence.
- D. Turn off lacp suspend-individual.

Answer: C

NEW QUESTION 3

```

N9K-A
interface Vlan100
ip address 10.10.100.194/26
ip router eigrp 50
ip passive-interface eigrp 50
hsrp 100
authentication text pa$$word
preempt
priority 150
timers msec 500 msec 1000
ip 10.10.100.193
no shutdown

N9K-B
interface Vlan100
ip address 10.10.100.195/26
ip router eigrp 50
ip passive-interface eigrp 50
hsrp 100
authentication text pa$$word
preempt
priority 120
timers msec 300 msec 1500
ip 10.10.100.193
no shutdown

N9K-A# sh hsrp brief
*:IPv6 group #:group belongs to a bundle
P indicates configured to preempt.
Interface Grp Prio P State Active addr Standby addr Group addr
Vlan100 100 150 P Active local unknown 10.10.100.193 (conf)

N9K-B# sh hsrp brief
*:IPv6 group #:group belongs to a bundle
P indicates configured to preempt.
Interface Grp Prio P State Active addr Standby addr Group addr
Vlan100 100 120 P Active local unknown 10.10.100.193 (conf)

```

Refer to the exhibit. The HSRP instance on both switches is showing as active. Which action resolves the issue?

- A. Configure the HSRP timers to be the same.
- B. Allow VLAN 100 between the switches.
- C. Configure the IP address of N9K-B on the same subnet as N9K-A.
- D. Configure preempt on only one of the switches.

Answer: B

NEW QUESTION 4

```
switch1# show vpc brief
Legend:
(*) - local vPC is down, forwarding via vPC peer-link

vPC domain id : 500
Peer status : peer link is down
vPC keep-alive status : Suspended (Destination IP not reachable)
Configuration consistency status : success
vPC role : secondary, operational primary
Number of vPCs configured : 4
Peer Gateway : Disabled
Dual-active exluded VLANs : -

vPC Peer-link status
-----
id  Port  Status  Active  vlans
---  ---  ---
1  Po500  down  -

switch2# show vpc brief
Legend:
(*) - local vPC is down, forwarding via vPC peer-link

vPC domain id : 20
Peer status : peer link is down
vPC keep-alive status : Suspended (Destination IP not reachable)
Configuration consistency status : success
vPC role : secondary, operational primary
Number of vPCs configured : 4
Peer Gateway : Disabled
Dual-active exluded VLANs : -

vPC Peer-link status
-----
id  Port  Status  Active  vlans
---  ---  ---
1  Po500  down  -
```

Refer to the exhibit. vPC between switch1 and switch2 is not working. Which two actions are needed to fix the problem? (Choose two.)

- A. Match vPC domain ID between the two devices.
- B. Configure IP address on the interface.
- C. Activate VLANs on the vPC.
- D. Configure vPC peer link and vPC peer keepalive correctly.
- E. Configure one of the switches as primary for the vPC.

Answer: AC

NEW QUESTION 5


```
Nexus7K-1# show configuration interface
vlan50
interface Vlan50
  no shutdown
  ip address 10.35.164.2/25
  hsrp version 2
  hsrp 50
    preempt
    priority 150
    ip 10.35.164.1

Nexus7K-2# show configuration interface
vlan50
interface Vlan50
  no shutdown
  ip address 10.35.164.3/25
  hsrp 50
    preempt
    priority 50
    ip 10.35.164.1
```

Refer to the exhibit. HSRP adjacency fails to form between Nexus7K-1 and Nexus7K-2. Which action should be taken to solve the problem?

- A. Configure preempt on one of the switches in the HSRP group.
- B. Configure the same HSRP priority between the two switches.
- C. Configure the correct subnet mask on Nexus7K-1.
- D. Configure HSRP version 2 on Nexus7K-2.

Answer: D

NEW QUESTION 6

An engineer is troubleshooting a packet flow from an access leaf to spine. Which EVPN routes are expected on this connection?

- A. EVPN Type 1-5
- B. EVPN Type 0,9,15
- C. EVPN Type 9-15
- D. EVPN Type 0,16

Answer: A

NEW QUESTION 7

```
switch# show interface fc1/5
fc1/5 is down (NPV upstream port not available)
Hardware is Fibre Channel, SFP is short wave laser w/o OFC (SN)
Port WWN is 20:47:00:0d:ac:a4:3b:83
Admin port mode is F, turnk mode is off
snmp link state traps are enabled
Port vsan is 100
  Receive data field Size is 2112
```

Refer to the exhibit. Interface fc1/5 is offline. Which action should be taken to troubleshoot the issue?

- A. Activate the correct zoneset for VSAN 100.
- B. Update the FLOGI database to contain the FLOGI entries for interface fc1/5 in VSAN 100.
- C. Update the FCNs database to contain names for VSAN 100.
- D. Configure the upstream ports and the server ports to be in VSAN 100.

Answer: D

NEW QUESTION 8

An attempt to use a global vNIC redundancy template pair results in a service profile that fails to apply. Which action resolves the issues?

- A. Create the peer names before creating the templates.
- B. Assign the secondary template first, and then set the peer name.
- C. Assign both templates simultaneously.
- D. Assign the primary template first, and then set the peer name.

Answer: D

NEW QUESTION 9

You have an ACI environment with three APICs, two spine switches, and four-leaf switches. You wipe and reboot all APICs first then leaf and spine switches one-

by-one and successfully go through the Initial Setuo dialogue on the APIC 1 CIMC KVM console. When you log in to the APIC1 WebGUI, you notice that you do not see any directly connected leaf switches being discovered under Fabric > Inventory > Fabric Membership. What is the cause of the issue?

- A. The leaf nodes were not erased properly, which caused a fabric parameters mismatch with the APIC1.
- B. Rebooting the APICs and the leaf and spine switches after wiping them is not required.
- C. You forgot to enter the TEP Pool value during the Initial Setup dialogue on APIC1.
- D. The same Fabric Name value should be used before after wiping all devices.

Answer: C

NEW QUESTION 10

```
leaf1# show interface ethernet 1/11
Ethernet1/11 is up (out-of-service)
admin state is up, Dedicated Interface
  Hardware: 1000/10000 Ethernet, address: e4aa/5d94.a2b5 (bia e4aa.5d94.a2b5)
  MTU 9000 bytes, BW 10000000 Kbit, DLY 1 usec
  reliability 255/255, txload 1/255, rxload 1/255
  Encapsulation ARPA, medium is broadcast
  Port mode is trunk
  full-duplex, 10 Gb/s, media type is 10G
  FEC (forward-error-correction) : disable-fec
  Beacon is turned off
  Auto-Negotiation is turned on
  Input flow-control is off, output flow-control is off
  Auto-mdix is turned off
  Rate mode is dedicated
  Switchport monitor is off
  EtherType is 0x8100
  EEE (efficient-ethernet) : n/a
  Last link flapped 4d06h
  Last clearing of "show interface" counters never
  1 interface resets
  30 seconds input rate 0 bits/sec, 0 packets/sec
  30 seconds output rate 0 bits/sec, 0 packets/sec
```

Refer to the exhibit. An engineer is performing a health check on ACI. Which statement about interface Ethernet 1/11 is true?

- A. The interface is working correctly and fully operational, but it is not in use.
- B. The interface policy is misconfigured.
- C. "out-of-service" is the default interface status in ACI.
- D. "out-of-service" indicates that no service graph is in use for this interface.

Answer: B

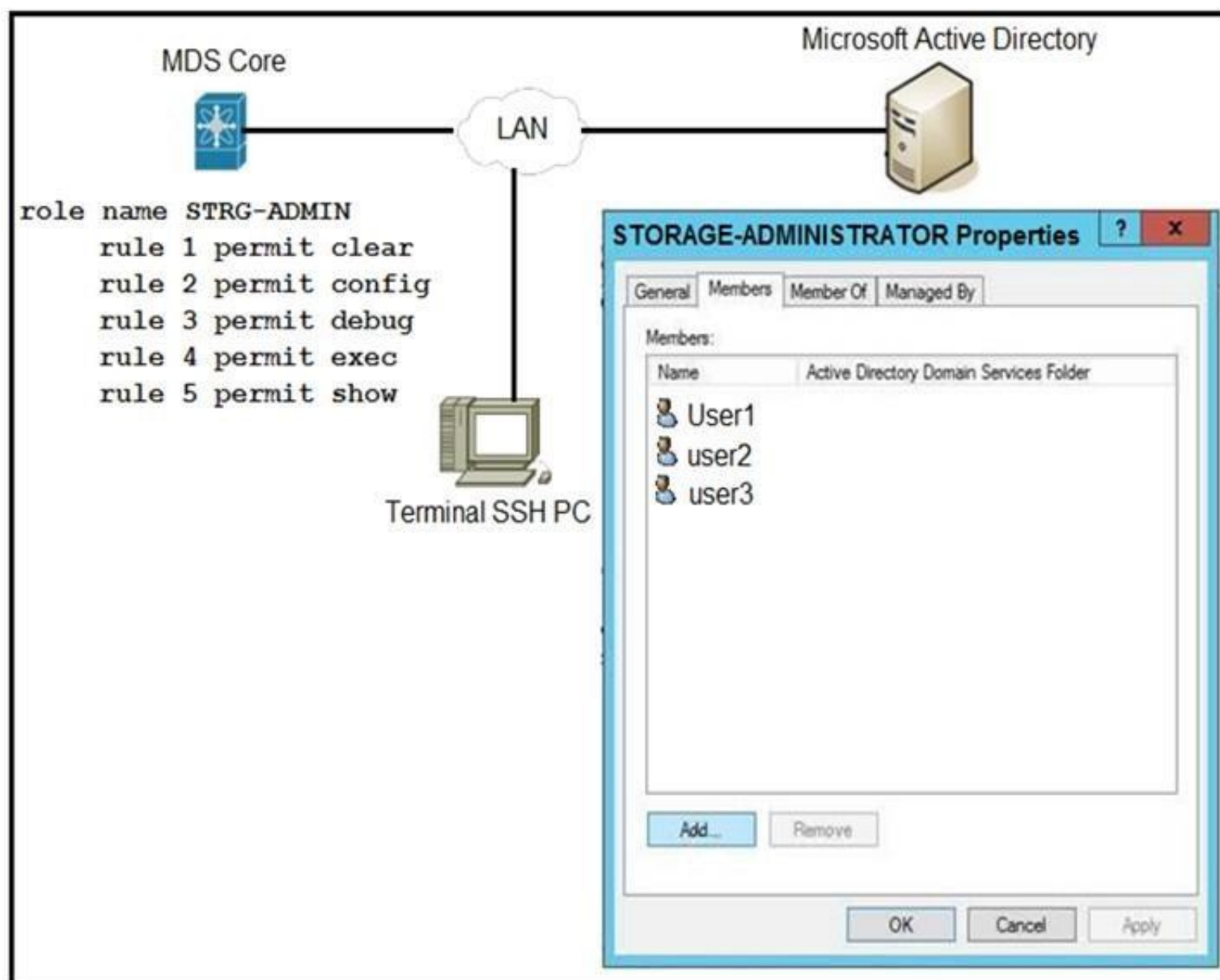
NEW QUESTION 10

An engineer is implementing a storage VDC, but fails. Which two prerequisites must be in place before a storage VDC is implemented? (Choose two.)

- A. M-Series module
- B. ESSENTIALS license
- C. STORAGE-ENT license
- D. FCoE license
- E. F-Series module

Answer: DE

NEW QUESTION 13



Refer to the exhibit. An engineer is troubleshooting why user1, user2, and user3 from group STORAGE-ADMINISTRATOR in Microsoft Active Directory cannot log in to the Cisco MDS SSH CLI. Which action resolves the issue?

- A. Configure the role name to match the group name on Microsoft Active Directory.
- B. Include specific users into MDS role configuration.
- C. Configure SSH logins on Cisco MDS switch.
- D. Integrate Cisco MDS with Microsoft Active Directory.

Answer: A

NEW QUESTION 14

Refer to the exhibit. A new Cisco Nexus 5548 Switch connects to a network. SAN switching is configured on the switch. The switch fc2/10 NP uplink is shown in the exhibit. Which action ensures that fc2/10 is in an up state?

- A. Replace the SFP port module in fc2/10.
- B. Configure the admin port type E on the upstream switch that connects the port.
- C. Enable NPIV on the upstream switch that connects the port.
- D. Configure the BB_credit buffers on the upstream switch that connects the port.

Answer: C

NEW QUESTION 18

A server fails to boot from the operating system after a RAID1 cluster migration. The RAID remains in an inactive state during and after a service profile association. Which action resolves the issue?

- A. Configure the SAN boot target in the service profile.
- B. Configure the SAN boot target to any configuration mode.
- C. Use a predefined local disk configuration policy.
- D. Remove the local disk configuration policy.

Answer: C

NEW QUESTION 19

An engineer is troubleshooting a failed DCBX exchange between a server and a Cisco Nexus switch. Which action allows DCBX to successfully negotiate?

- A. Enable ETS
- B. Enable PFC.
- C. Enable Cisco Discovery Protocol.
- D. Enable LLDP.

Answer: D

NEW QUESTION 24

One of Cisco Nexus Series interfaces has become errdisabled with the error message "DCX-No ACK in 100 PDUs". What is the cause of this error?

- A. The host has not responded to the Control Sub-TLV DCBX exchanges of the switch.
- B. The acknowledgement number in the server response has not incremented for 100 exchanges.
- C. Cisco Discovery Protocol is disabled on the switch.
- D. LLDP is disabled on the switch.

Answer: B

NEW QUESTION 25

```
event manager applet config_monitor
event cli match "conf t"
action 1.0 snmp-trap strdata "User has entered into configuration mode"
```

Refer to the exhibit. The EEM script fails to send an SNMP trap when a user attempts to enter configuration mode. Which configuration is missing from the script?

- A. event statement
- B. event-default action statement
- C. policy-default action statement
- D. IP address of the SNMP server

Answer: D

NEW QUESTION 29

```
event manager applet looback_online override -BootupPortLoopback
action 1 syslog priority notifications msg "Switch Online"
action 2 policy-default
```

Refer to the exhibit. The EEM script overrides all events in the system policy. What should be added to the script to resolve the issue?

- A. event statement
- B. environment variable
- C. event-default action statement
- D. configure terminal action

Answer: A

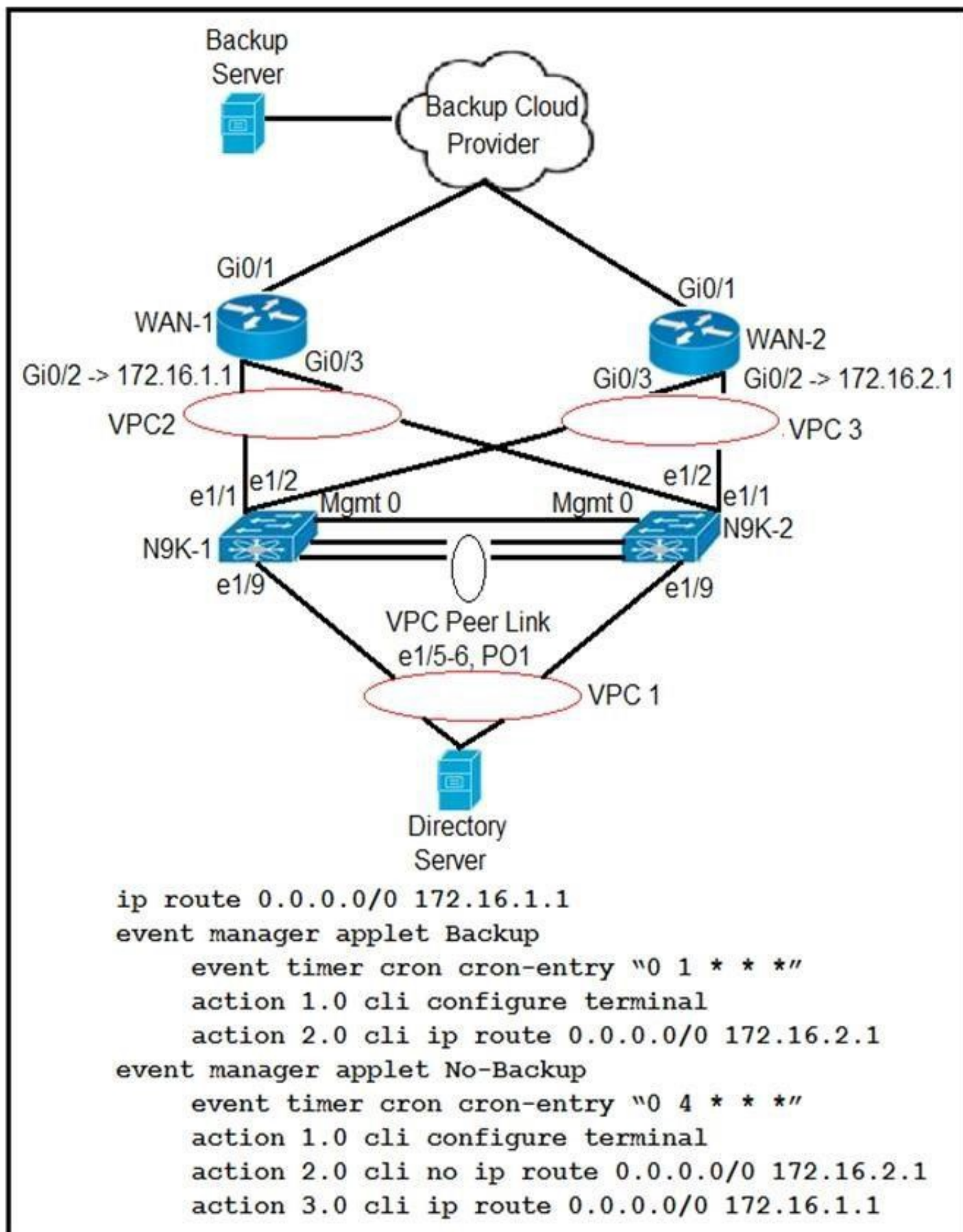
NEW QUESTION 32

An upgrade of protected RPMs from the Bash shell did not take effect. Which action is required for the changes to take effect?

- A. Restart the Bash shell.
- B. Reload the switch.
- C. Upgrade the RPMs from the Guest shell.
- D. Disable and reen able the Bash feature.

Answer: D

NEW QUESTION 34



Refer to the exhibit. Partial configuration from N9K-1 and N9K-2 is included. The client has two WANs connected. WAN-1 is for normal business-day activities. WAN-2 is for server backups during nonworking hours of 1:00 a.m. to 5:00 a.m. daily. The client says that at the scheduled time for backup, the data center server failed to use the WAN-2 link to back up the servers to the cloud backup system. What is the solution to this problem?

- A. The event timer must be written in epoch time format.
- B. The Cisco Nexus switch must be configured with one applet because a configuration with two applets will fail.
- C. The Cron entry must be configured without double quotes.
- D. The applet called "Backup" must include an action to remove the current static route.

Answer: D

NEW QUESTION 36

A network administrator attempts to install an application in the Cisco NX-OS Guest shell and receives an error that there is not enough space on the disk. Which command must the administrator run to increase the disk space available in the Guest shell?

- A. guestshell growdisk rootfs [size-in-MB]
- B. guestshell pvextend rootfs [size-in-MB]
- C. guestshell resize rootfs [size-in-MB]
- D. guestshell resize2fs rootfs [size-in-MB]

Answer: C

NEW QUESTION 41

```
switch# guestshell resize cpu 4
```

Note: System CPU share will be resized on Guest shell enable

Refer to the exhibit. After the configuration is performed, guestshell continues to use 2%CPU. Which action resolves the issue?

- A. Resync the database
- B. Recreate the guestshell
- C. Reboot the guestshell
- D. Reboot the switch

Answer: C

NEW QUESTION 46

A request to activate the port security database is rejected. Which action do you perform to investigate the cause of the issue?

- A. Enable the auto-learning feature.
- B. Use the force option to identify rejected devices.
- C. Find conflicting entries between the active and configuration databases.
- D. Verify that devices are fully attached to the active database.

Answer: B

NEW QUESTION 51

Your client reports that many flaps and server cluster disconnects occur in their data center. While troubleshooting the issue, you discover a network attack hitting their Cisco Nexus 7000 Series Switches and determine that the source IP addresses are spoofed. Which first-line security solution resolves this issue?

- A. Dynamic ARP Inspection
- B. Unicast RPF
- C. IP Source Guard
- D. Storm Control

Answer: A

NEW QUESTION 53

DRAG DROP

A firmware upgrade on a fabric interconnect fails. A bootflash contains a valid image. Drag and drop the recovery steps from the left onto the correct order on the right.

Select and Place:

- A. Mastered
- B. Not Mastered

Answer: A

NEW QUESTION 55

Refer to the exhibit. Cisco UCS Manager is being upgraded using the Auto Install feature, but the FSM fails. Which action resolves the issue?

- A. Acknowledge the primary fabric interconnect.
- B. Remove the service pack from the subordinate fabric interconnect.
- C. Clear the startup version of the default infrastructure pack.
- D. Upgrade the firmware of the infrastructure firmware by using the force option.

Answer: C

NEW QUESTION 59

After upgrading a client's fabric interconnect to the latest version, an engineer discovers that the appliance has lost its entire configuration. Which two locations should an engineer check to confirm that the appliance had backed up the configuration prior to the upgrade in order to retrieve the lost configuration? (Choose two.)

- A. Equipment FSM page, InternalBackup stage
- B. Service profiles page, InternalBackup stage
- C. Admin page, PollInternalBackup stage
- D. Equipment FSM page, PollInternalBackup stage
- E. Admin page, InternalBackup stage.

Answer: AC

NEW QUESTION 64

.....

THANKS FOR TRYING THE DEMO OF OUR PRODUCT

Visit Our Site to Purchase the Full Set of Actual 300-615 Exam Questions With Answers.

We Also Provide Practice Exam Software That Simulates Real Exam Environment And Has Many Self-Assessment Features. Order the 300-615 Product From:

<https://www.2passeasy.com/dumps/300-615/>

Money Back Guarantee

300-615 Practice Exam Features:

- * 300-615 Questions and Answers Updated Frequently
- * 300-615 Practice Questions Verified by Expert Senior Certified Staff
- * 300-615 Most Realistic Questions that Guarantee you a Pass on Your FirstTry
- * 300-615 Practice Test Questions in Multiple Choice Formats and Updatesfor 1 Year