

Cisco

Exam Questions 300-615

Troubleshooting Cisco Data Center Infrastructure (DCIT)



NEW QUESTION 1

```
switch1# show vpc brief
Legend:
(*) - local vPC is down, forwarding via vPC peer-link

vPC domain id : 500
Peer status : peer link is down
vPC keep-alive status : Suspended (Destination IP not reachable)
Configuration consistency status : success
vPC role : secondary, operational primary
Number of vPCs configured : 4
Peer Gateway : Disabled
Dual-active exluded VLANs : -

vPC Peer-link status
-----
id  Port  Status  Active  vlans
---  ---  ---
1  Po500  down  -

switch2# show vpc brief
Legend:
(*) - local vPC is down, forwarding via vPC peer-link

vPC domain id : 20
Peer status : peer link is down
vPC keep-alive status : Suspended (Destination IP not reachable)
Configuration consistency status : success
vPC role : secondary, operational primary
Number of vPCs configured : 4
Peer Gateway : Disabled
Dual-active exluded VLANs : -

vPC Peer-link status
-----
id  Port  Status  Active  vlans
---  ---  ---
1  Po500  down  -
```

Refer to the exhibit. vPC between switch1 and switch2 is not working. Which two actions are needed to fix the problem? (Choose two.)

- A. Match vPC domain ID between the two devices.
- B. Configure IP address on the interface.
- C. Activate VLANs on the vPC.
- D. Configure vPC peer link and vPC peer keepalive correctly.
- E. Configure one of the switches as primary for the vPC.

Answer: AC

NEW QUESTION 2

Refer to the exhibit. Sw1 and Sw2 are two Cisco Nexus 9000 Series Switches that run Cisco NX-OS. They are VTEPs in the same vPC domain. Which statement describes what happens in this scenario?

- A. Sw1 drops all traffic because there is no (S, G) OIF list to encapsulate VXLAN multicast packets and send them out to the underlay network through the uplink interfaces.
- B. Sw1 performs the VxLAN multicast encapsulation and decapsulation for all traffic associated with the VxLAN VNIs.
- C. Sw1 and switch 2 perform the VxLAN multicast encapsulation and decapsulation for all traffic associated with the VxLAN VNIs, depending on the hashing.
- D. Sw2 did not send an IP PIM register to the rendezvous point for the multicast group of the VxLAN VNI.

Answer: B

NEW QUESTION 3

A customer configures HSRP between two data centers that are interconnected with OTV. The configuration succeeds, but traffic between two ESXi virtual hosts on the same site is routed suboptimally through the OTV overlay. Which two actions optimize the traffic? (Choose two.)

- A. Disable first-hop redundancy.
- B. Filter HSRP traffic by using a Layer 3 VACL on the OTV edge devices.
- C. Filter HSRP by using a Layer 2 MAC-list on the ESXi vSwitch.

- D. Filter HSRP traffic by using a Layer 3 VACL on the ESXi vSwitch.
- E. Filter HSRP by using a Layer 2 MAC-list on the OTV edge devices.

Answer: AB

NEW QUESTION 4

```
Nexus7K-1# show configuration interface
vlan50
interface Vlan50
  no shutdown
  ip address 10.35.164.2/25
  hsrp version 2
  hsrp 50
    preempt
    priority 150
    ip 10.35.164.1

Nexus7K-2# show configuration interface
vlan50
interface Vlan50
  no shutdown
  ip address 10.35.164.3/25
  hsrp 50
    preempt
    priority 50
    ip 10.35.164.1
```

Refer to the exhibit. HSRP adjacency fails to form between Nexus7K-1 and Nexus7K-2. Which action should be taken to solve the problem?

- A. Configure preempt on one of the switches in the HSRP group.
- B. Configure the same HSRP priority between the two switches.
- C. Configure the correct subnet mask on Nexus7K-1.
- D. Configure HSRP version 2 on Nexus7K-2.

Answer: D

NEW QUESTION 5

DRAG DROP

An engineer is troubleshooting issues in Cisco UCS Director. Drag and drop the possible causes from the left onto the correct issues on the right. Select and Place:

- A. Mastered
- B. Not Mastered

Answer: A

NEW QUESTION 6

Refer to the exhibit. A switch is being downgraded to an earlier release because of a problem with the current release. After the switch is downgraded, it can no longer forward traffic. Which action resolves the issue?

- A. Enable ISSD after the downgrade is complete.
- B. Roll back to the original image.
- C. Reload the switch.
- D. Shut and no shut the interfaces to the FEX.

Answer: B

NEW QUESTION 7

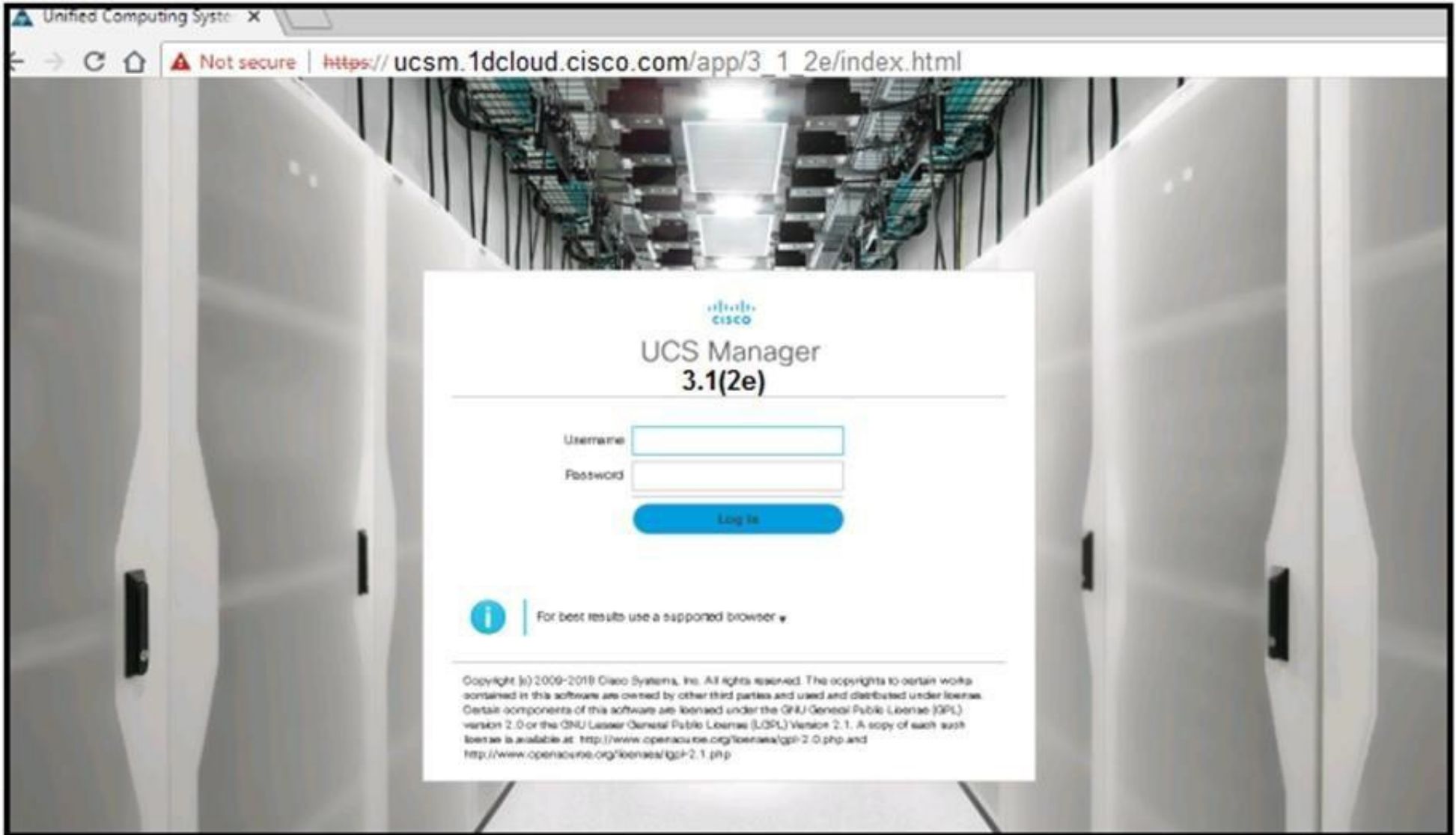
```
Cisco VIC iSCSI, Boot Driver Version 2.0 (1w)
(C) 2010 Cisco Systems, Inc.
Initialize error 1
```

Refer to the exhibit. An engineer is configuring boot from iSCSI on a Cisco UCS B-Series Blade Server, but the LUN fails to mount. Which action resolves the issue?

- A. Statically configure the target information in the Boot Policy.
- B. Configure an MTU size of 9000 on the appliance port.
- C. Configure a QoS policy on the vNIC.
- D. Set a connection timeout value of 250 in the iSCSI Adapter Policy.

Answer: A

NEW QUESTION 8



Refer to the exhibit. A web browser displays a “not secure” warning message when accessing the web interface of Cisco UCS Manager. Which action resolves the issue?

- A. Load third-party certificate to UCS Manager.
- B. Use the correct TCP port for HTTPS.
- C. Use a supported web browser.
- D. Use a supported version of UCS Manager.

Answer: A

NEW QUESTION 9

An attempt to use a global vNIC redundancy template pair results in a service profile that fails to apply. Which action resolves the issues?

- A. Create the peer names before creating the templates.
- B. Assign the secondary template first, and then set the peer name.
- C. Assign both templates simultaneously.
- D. Assign the primary template first, and then set the peer name.

Answer: D

NEW QUESTION 10

An engineer attempts to register Cisco UCS Manager to Cisco UCS Central, but the registration fails. The engineer can ping Cisco UCS Central from UCS Manager. Which two actions must the engineer attempt to resolve the problem? (Choose two.)

- A. Synchronize the date and time to NTP for Cisco UCS Central and the Cisco UCS domains.
- B. Apply the UCS Central license to UCS Central.
- C. Place Cisco UCS Manager on the same subnet as Cisco UCS Central.
- D. Allow port 443 between Cisco UCS Manager and Cisco UCS Central.
- E. Allow port 9443 between Cisco UCS Manager and Cisco UCS Central.

Answer: AD

NEW QUESTION 10

DRAG DROP

Drag and drop the Cisco UCS SNMP fault types from the left onto the correct issues on the right.
 Select and Place:

connectivity	A server discovery fails.
environment	An adapter is unreachable.
operational	A voltage issue is detected.
server	A service profile is unable to associate.

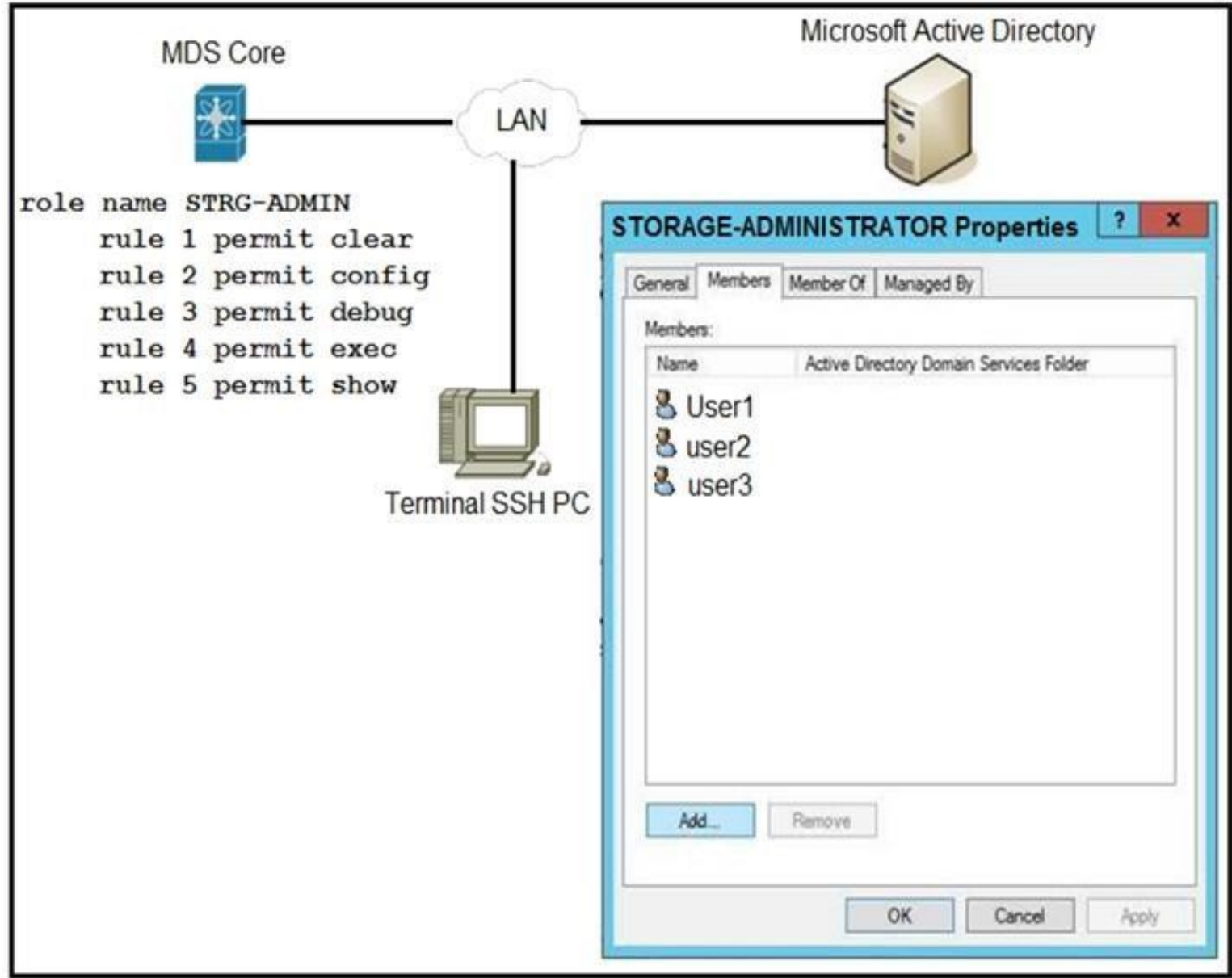
- A. Mastered
- B. Not Mastered

Answer: A

Explanation:

connectivity	operational
environment	connectivity
operational	environment
server	server

NEW QUESTION 14



Refer to the exhibit. An engineer is troubleshooting why user1, user2, and user3 from group STORAGE-ADMINISTRATOR in Microsoft Active Directory cannot log in to the Cisco MDS SSH CLI. Which action resolves the issue?

- A. Configure the role name to match the group name on Microsoft Active Directory.
- B. Include specific users into MDS role configuration.
- C. Configure SSH logins on Cisco MDS switch.
- D. Integrate Cisco MDS with Microsoft Active Directory.

Answer: A

NEW QUESTION 17

Refer to the exhibit. A new Cisco Nexus 5548 Switch connects to a network. SAN switching is configured on the switch. The switch fc2/10 NP uplink is shown in the exhibit. Which action ensures that fc2/10 is in an up state?

- A. Replace the SFP port module in fc2/10.
- B. Configure the admin port type E on the upstream switch that connects the port.
- C. Enable NPIV on the upstream switch that connects the port.
- D. Configure the BB_credit buffers on the upstream switch that connects the port.

Answer: C

NEW QUESTION 20

An engineer is troubleshooting a failed DCBX exchange between a server and a Cisco Nexus switch. Which action allows DCBX to successfully negotiate?

- A. Enable ETS
- B. Enable PFC.
- C. Enable Cisco Discovery Protocol.
- D. Enable LLDP.

Answer: D

NEW QUESTION 25

A Fibre Channel interface on a Cisco Nexus 5000 Series Switch receives bit errors, and the switch disables the interface. A temporary workaround must be implemented before the root cause is identified. Which action does an engineer take to prevent this issue from reoccurring?

- A. Verify that the SFPs are supported.
- B. Change the SFP to operate at 4 Gbps instead of 2 Gbps.
- C. Run the shutdown and then no shutdown command on the interface.
- D. Run the switchport ignore bit-errors command on the interface.

Answer: D

NEW QUESTION 26

```
event manager applet config_monitor
event cli match "conf t"
action 1.0 snmp-trap strdata "User has entered into configuration mode"
```

Refer to the exhibit. The EEM script fails to send an SNMP trap when a user attempts to enter configuration mode. Which configuration is missing from the script?

- A. event statement
- B. event-default action statement
- C. policy-default action statement
- D. IP address of the SNMP server

Answer: D

NEW QUESTION 30

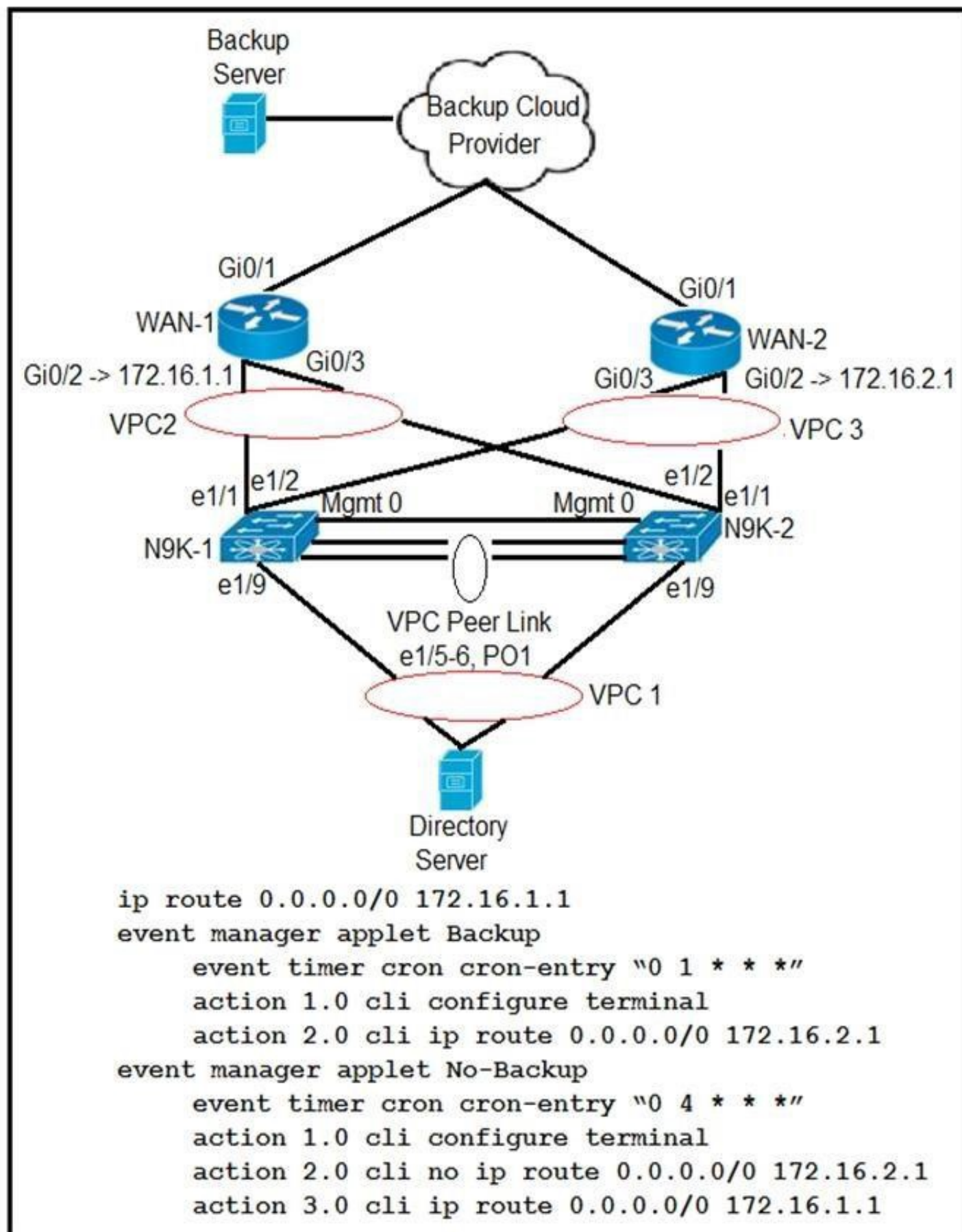
```
event manager applet looback_online override -BootupPortLoopback
action 1 syslog priority notifications msg "Switch Online"
action 2 policy-default
```

Refer to the exhibit. The EEM script overrides all events in the system policy. What should be added to the script to resolve the issue?

- A. event statement
- B. environment variable
- C. event-default action statement
- D. configure terminal action

Answer: A

NEW QUESTION 35



▪ Refer to the exhibit. Partial configuration from N9K-1 and N9K-2 is included. The client has two WANs connected. WAN-1 is for normal business-day activities.
 ▪ WAN-2 is for server backups during nonworking hours of 1:00 a.m. to 5:00 a.m. daily.
 The client says that at the scheduled time for backup, the data center server failed to use the WAN-2 link to back up the servers to the cloud backup system. What is the solution to this problem?

- A. The event timer must be written in epoch time format.
- B. The Cisco Nexus switch must be configured with one applet because a configuration with two applets will fail.
- C. The Cron entry must be configured without double quotes.
- D. The applet called "Backup" must include an action to remove the current static route.

Answer: D

NEW QUESTION 40

A network administrator attempts to install an application in the Cisco NX-OS Guest shell and receives an error that there is not enough space on the disk. Which command must the administrator run to increase the disk space available in the Guest shell?

- A. guestshell growdisk rootfs [size-in-MB]
- B. guestshell pvextend rootfs [size-in-MB]
- C. guestshell resize rootfs [size-in-MB]
- D. guestshell resize2fs rootfs [size-in-MB]

Answer: C

NEW QUESTION 45

An engineer is troubleshooting a custom AV pair that was created by a client on an external authentication server to map a read-only role for a specific security domain. Which AV pair solves the problem?

- A. shell:domains=Security_Domain_1/Read_Role_1|Read_Role_2

- B. shell:domains=Security_Domain_1/Write_Role_1|Read_Role_2
- C. shell=Security_Domain_1/Read_Role_1|Read_Role_2
- D. shell:domains=Security_Domain_1/Read_Role_1|Read_Role_2

Answer: A

NEW QUESTION 50

A request to activate the port security database is rejected. Which action do you perform to investigate the cause of the issue?

- A. Enable the auto-learning feature.
- B. Use the force option to identify rejected devices.
- C. Find conflicting entries between the active and configuration databases.
- D. Verify that devices are fully attached to the active database.

Answer: B

NEW QUESTION 51

A server administrator attempts to change the Cisco IMC KVM certificate to one signed by a private CA, but the certificate is not being accepted. What can cause this process to fail?

- A. using a certificate with a password-protected private key
- B. RSA encryption being used in the generation of the certificate.
- C. AES encryption being used in the generation of the certificate.
- D. public IP address of the Cisco IMC not being included in the SAN.

Answer: A

NEW QUESTION 55

An IOM fails during a firmware upgrade and is unresponsive. Which action recovers the module?

- A. Restore UCSM configuration from backup.
- B. Roll back to the previous firmware.
- C. Use AutoInstall to reinstall the firmware.
- D. From the peer IOM, reset the faulty module.

Answer: B

NEW QUESTION 56

After upgrading a client's fabric interconnect to the latest version, an engineer discovers that the appliance has lost its entire configuration. Which two locations should an engineer check to confirm that the appliance had backed up the configuration prior to the upgrade in order to retrieve the lost configuration? (Choose two.)

- A. Equipment FSM page, InternalBackup stage
- B. Service profiles page, InternalBackup stage
- C. Admin page, PollInternalBackup stage
- D. Equipment FSM page, PollInternalBackup stage
- E. Admin page, InternalBackup stage.

Answer: AC

NEW QUESTION 57

.....

Thank You for Trying Our Product

We offer two products:

1st - We have Practice Tests Software with Actual Exam Questions

2nd - Questions and Answers in PDF Format

300-615 Practice Exam Features:

- * 300-615 Questions and Answers Updated Frequently
- * 300-615 Practice Questions Verified by Expert Senior Certified Staff
- * 300-615 Most Realistic Questions that Guarantee you a Pass on Your First Try
- * 300-615 Practice Test Questions in Multiple Choice Formats and Updates for 1 Year

100% Actual & Verified — Instant Download, Please Click
[Order The 300-615 Practice Test Here](#)