

## 300-615 Dumps

### Troubleshooting Cisco Data Center Infrastructure (DCIT)

<https://www.certleader.com/300-615-dumps.html>



### NEW QUESTION 1

An engineer is troubleshooting a packet flow from an access leaf to spine. Which EVPN routes are expected on this connection?

- A. EVPN Type 1-5
- B. EVPN Type 0,9,15
- C. EVPN Type 9-15
- D. EVPN Type 0,16

**Answer: A**

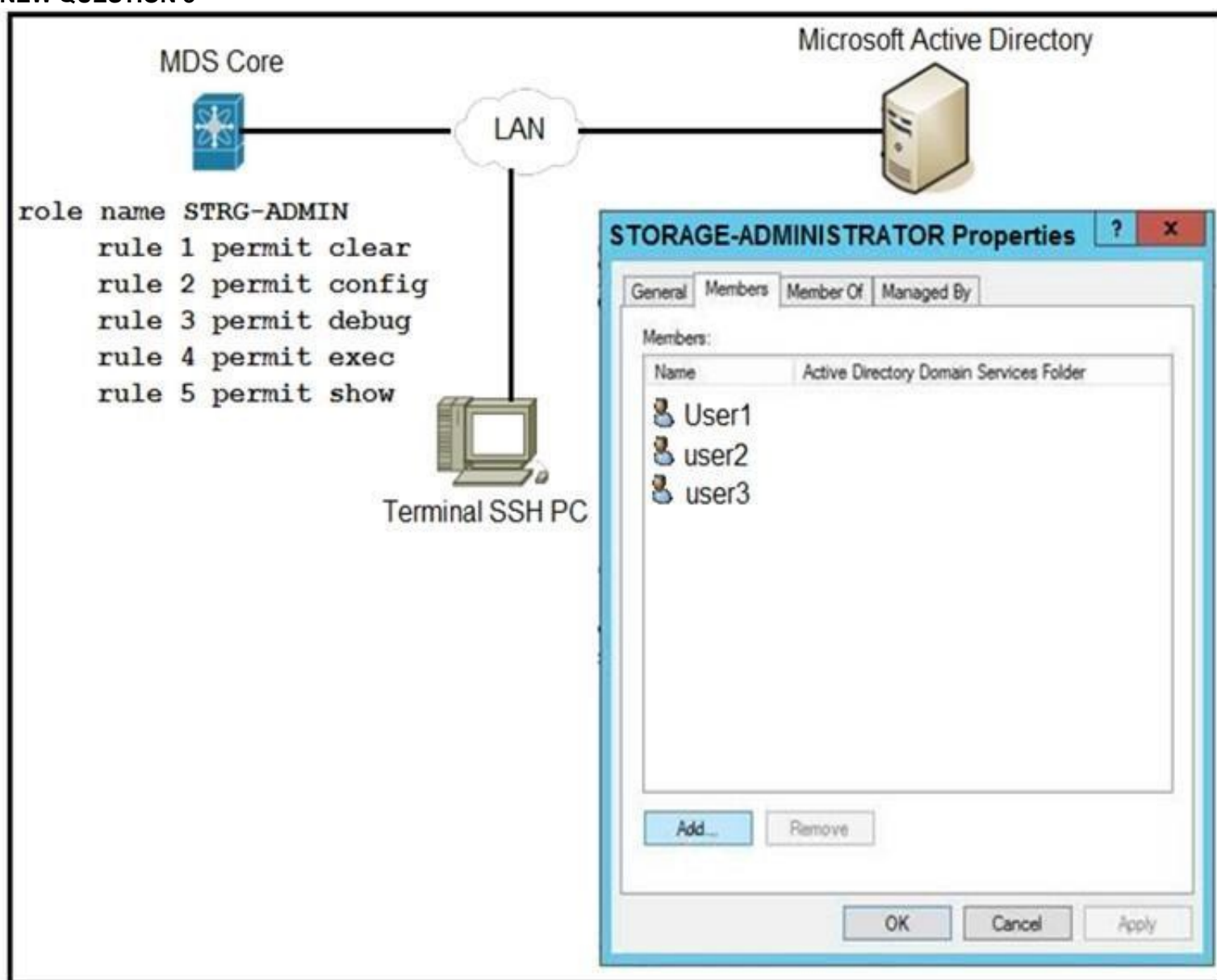
### NEW QUESTION 2

Cisco Unified Computing System Manager raises a critical error message that indicates that the system has overlapping Ethernet and FCoE VLANs. All of the Ethernet traffic on the overlapping VLANs drops. Which action resolves the issue?

- A. Modify the VLAN assignment to vNICs.
- B. Change the PIN groups on the vHBAs.
- C. Modify the FCoE VLAN.
- D. Set the FCoE VLAN as the native VLAN on server uplinks.

**Answer: A**

### NEW QUESTION 3



Refer to the exhibit. An engineer is troubleshooting why user1, user2, and user3 from group STORAGE-ADMINISTRATOR in Microsoft Active Directory cannot log in to the Cisco MDS SSH CLI. Which action resolves the issue?

- A. Configure the role name to match the group name on Microsoft Active Directory.
- B. Include specific users into MDS role configuration.
- C. Configure SSH logins on Cisco MDS switch.
- D. Integrate Cisco MDS with Microsoft Active Directory.

**Answer: A**

### NEW QUESTION 4

An engineer is troubleshooting a failed DCBX exchange between a server and a Cisco Nexus switch. Which action allows DCBX to successfully negotiate?

- A. Enable ETS
- B. Enable PFC.
- C. Enable Cisco Discovery Protocol.
- D. Enable LLDP.

**Answer: D**

**NEW QUESTION 5**

A Fibre Channel interface on a Cisco Nexus 5000 Series Switch receives bit errors, and the switch disables the interface. A temporary workaround must be implemented before the root cause is identified. Which action does an engineer take to prevent this issue from reoccurring?

- A. Verify that the SFPs are supported.
- B. Change the SFP to operate at 4 Gbps instead of 2 Gbps.
- C. Run the shutdown and then no shutdown command on the interface.
- D. Run the switchport ignore bit-errors command on the interface.

**Answer:** D

**NEW QUESTION 6**

```
serverteam Cleartext-Password := "<password>"  
  
Cisco-avpair = "shell:domains = user/admin/,common//read-all(16000)"
```

Refer to the exhibit. An engineer is investigating a role mapping issue on a switch. The users report that they cannot view the IP addresses under the tenant "corp". Which action resolves the issue?

- A. Add the users to the RADIUS server.
- B. Update the UNIX ID.
- C. Configure the correct secret password between the APIC and the RADIUS server.
- D. Add the updated avpair to include/corp/admin/

**Answer:** C

**NEW QUESTION 7**

Refer to the exhibit. A network engineer configures an EEM script to get a syslog notification after a configuration change. This message appears when the engineer must make a new configuration to this switch. Which configuration did the engineer neglect to apply in the script for it to function properly?

- A. event cli match 'configure terminal'
- B. event policy-default count 1 time 100
- C. event syslog occurs 10
- D. action 2.0 event-default

**Answer:** D

**NEW QUESTION 8**

```
event manager applet looback_online override -BootupPortLoopback  
  action 1 syslog priority notifications msg "Switch Online"  
  action 2 policy-default
```

Refer to the exhibit. The EEM script overrides all events in the system policy. What should be added to the script to resolve the issue?

- A. event statement
- B. environment variable
- C. event-default action statement
- D. configure terminal action

**Answer:** A

**NEW QUESTION 9**

DRAG DROP

Drag and drop the commands from the left onto the correct categories on the right.  
Select and Place:

- A. Mastered
- B. Not Mastered

**Answer:** A

**NEW QUESTION 10**

A network administrator attempts to install an application in the Cisco NX-OS Guest shell and receives an error that there is not enough space on the disk. Which command must the administrator run to increase the disk space available in the Guest shell?

- A. guestshell growdisk rootfs [size-in-MB]
- B. guestshell pvextend rootfs [size-in-MB]
- C. guestshell resize rootfs [size-in-MB]
- D. guestshell resize2fs rootfs [size-in-MB]

**Answer:** C

**NEW QUESTION 10**

```
N5k-A-199# sh install all impact system
N5000-uk9.7.1.4.N1.1.bin kickstart
N5000-uk9-kickstart.7.3.4.N1.1.bin
Verifying image bootflash:/n5000-uk9-
kickstart.7.3.4.N1.1.bin for boot
variable "kickstart".
[#####] 100% -- SUCCESS
Verifying image bootflash:/n5000-
uk9.7.1.4.N1.1.bin for boot variable
"system".
[# ] 0% -- FAIL. Return code 0x4045001F
(image MD5 checksum error).
Install has failed. Image verification
failed (0x40930011)
```

Refer to an exhibit. An engineer is troubleshooting an upgrade failure on a switch. Which action resolves the issue?

- A. Save the system image in NVRAM.
- B. Use the same system image as the kickstart image.
- C. Load a new system image.
- D. Reload the same system image.

**Answer: C**

#### NEW QUESTION 11

.....

## Thank You for Trying Our Product

\* 100% Pass or Money Back

All our products come with a 90-day Money Back Guarantee.

\* One year free update

You can enjoy free update one year. 24x7 online support.

\* Trusted by Millions

We currently serve more than 30,000,000 customers.

\* Shop Securely

All transactions are protected by VeriSign!

**100% Pass Your 300-615 Exam with Our Prep Materials Via below:**

<https://www.certleader.com/300-615-dumps.html>