

350-601 Dumps

Implementing and Operating Cisco Data Center Core Technologies

<https://www.certleader.com/350-601-dumps.html>



NEW QUESTION 1

A customer wants to offload some of its order processing to a public cloud environment. The customer environment is based on Cisco ACI and uses Puppet with containenzed applications. The operations team requires a solution to orchestrate and optimize the cost of the new solution. Which product must be used to meet these requirements?

- A. Cisco Intersight
- B. Cisco Workload Optimization Manager
- C. Cisco CloudCenter
- D. Cisco Data Center Network Manager

Answer: C

Explanation:

<https://www.cisco.com/c/dam/en/us/products/collateral/cloud-systems-management/cloudcenter/white-paper-c1>

- Enforce multicloud governance by guiding user decisions to reduce risk
- Securely automate deployment to reduce manual effort and get consistent results
- Increase feature velocity via integration with developer tools to accelerate time to market (CI/CD = Puppet, Chef, and Ansible).
- Optimize cloud consumption to cut pay-per-use cloud costs

<https://www.cisco.com/c/en/us/products/collateral/cloud-systems-management/cloudcenter-suite/datasheet-c78>

NEW QUESTION 2

A network administrator must configure an extra keyring in Cisco UCS Manager. The key must provide a high level of encryption and secure authentication when users use the web interface. Which configuration command set must be applied to meet these requirements?

The screenshot shows four configuration options for setting the https keyring in Cisco UCS Manager. Each option is preceded by a radio button. Option C is selected, indicated by a filled radio button. The options are:

- ☐ set https keyring kring7984
set https cipher-suite-mode secure
set https ssl-protocol tls1-2
commit-buffer
- ☐ set https keyring kring7984
set https cipher-suite-mode secure
set https tls-protocol tls1-2
commit-buffer
- ☒ set https keyring kring7984
set https cipher-suite-mode high
set https ssl-protocol tls1-2#
commit-buffer
- ☐ set https keyring kring7984
set https cipher-suite-mode high
set https tls-protocol tls1-2
commit-buffer

- A. Option A
- B. Option B
- C. Option C
- D. Option D

Answer: C

Explanation:

https://www.cisco.com/c/en/us/td/docs/unified_computing/ucs/ucs-manager/CLI-User-Guides/Admin-Managem “cipher-suite-mode secure” is invalid command. “Cipher-suite-mode high” is valid command. “tls-protocol tls1-2” is invalid command. “Ssl-protocol tls1-2” is valid command.

```
UCS-A# scope system
UCS-A /system # scope services
UCS-A /system/services # enable https
UCS-A /system/services* # set https port 443
Warning: When committed, this closes all the web sessions.
UCS-A /system/services* # set https keyring kring7984
UCS-A /system/services* # set https cipher-suite-mode high
UCS-A /system/services* # set https ssl-protocol tls1-2
UCS-A /system/services* # commit-buffer
UCS-A /system/services #
```

NEW QUESTION 3

Refer to the exhibit

```
#!/bin/bash
### BEGIN INIT INFO
# Provides:          capture
# Required-Start:    $local_fs $network $named $time $syslog
# Required-Stop:     $local_fs $network $named $time $syslog
# Description:       Continuous capture script
### END INIT INFO

start() {
    tcpdump -W 3 -C 100 -i Eth1-42 -w /tmp/capture.pcap &
    RETVAL=$?
}

stop() {
    killall -9 tcpdump
    RETVAL=$?
}

case "$1" in
    start)
        start
        ;;
    stop)
        stop
        ;;
    *)
        echo "Usage: 60 {start|stop}"
        RETVAL=2
        ;;
esac

exit $RETVAL
```

A network engineer must run a continuous capture on a port A script called "capture"1 is created to start and stop the capture task Which command sequence makes the capture persistent after a reboot?

- ☐ initctl add capture
initctl init capture
- ☐ chkconfig --add capture
chkconfig --level 3 capture
- ☒ systemctl enable capture
systemctl start capture
- ☐ run bash /etc/init.d/capture
run bash start-stop-daemon

- A. Option A
- B. Option B
- C. Option C
- D. Option D

Answer: C

NEW QUESTION 4

An engineer must configure HSRP protocol on two Cisco Nexus 9000 Series Switches running a virtual port channel. In addition, the HSRP implementation must meet these requirements:

- It must allow more than 500 groups.
- switch 1 must act as the primary switch.
- Both switches must use a user-defined hardware address.

Drag and drop the commands from the right to complete a configuration of the HSRP on the left. The commands are used more than once. Not all commands are used.

<pre>! switch1 interface vlan300 ip 209.165.200.226/27 hsrp 300 </pre>	<pre>mac-address 6000.6000.6000 </pre>
<pre>ip 209.165.200.225 </pre>	<pre>hsrp version 1 </pre>
<pre>! switch2 interface vlan300 ip 209.165.200.227/27 hsrp 300 </pre>	<pre>priority 255 </pre>
<pre> </pre>	<pre>hsrp use-bia </pre>
<pre>ip 209.165.200.225 </pre>	<pre>priority 100 </pre>
<pre> </pre>	<pre>hsrp version 2 </pre>

- A. Mastered
- B. Not Mastered

Answer: A

Explanation:

Switch 1:

Box 1 = hsrp version 2

Box 2 = priority 100

Box 3 = mac-address 6000.6000.6000

Switch 2:

Box 1 = hsrp version 2

Box 2 = priority 255

Box 3 = mac-address 6000.6000.6000

NEW QUESTION 5

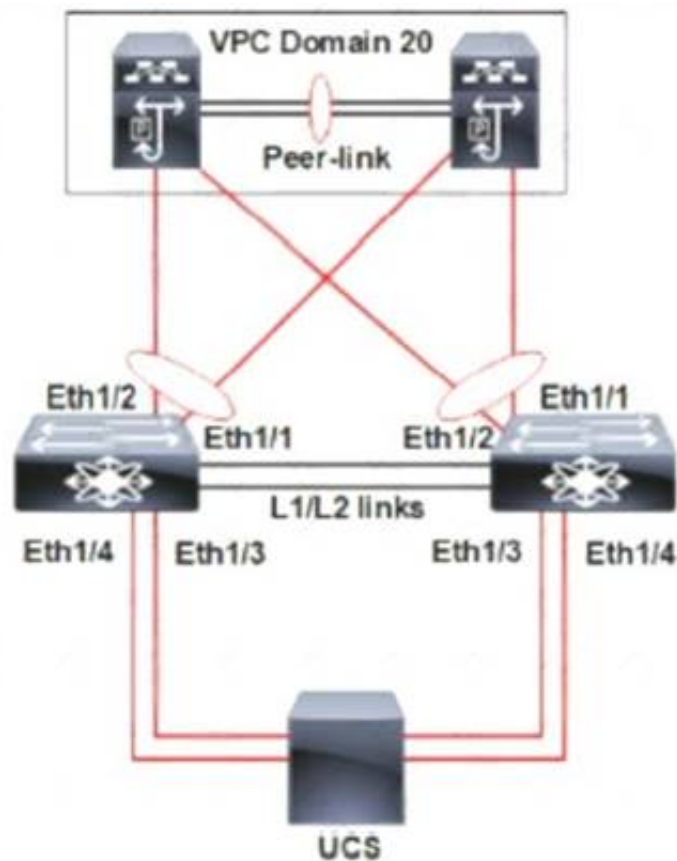
An engineer must configure a Cisco UCS domain for monitoring and management by the Cisco Intersight SaaS platform. After the setup is complete, administrators must have full control to configure the device through Cisco UCS Manager and Intersight. Which set of actions accomplishes this task?

- A. Configure Device Connector Access Mode as Allow Control in Device Console Claim the device on Intersight as UCSM Managed Mode.
- B. Configure Device Connector Access Mode as Allow Control in Cisco UCS Manager Claim the device on intersightc as Intersight Managed Mode
- C. Configure Device Connector Access Moao as Allow Control in Device Consol
- D. Claim the device on intersight as Intersight Managed Mode
- E. Configure Device Connector Access Mode as Allow Control in Cisco UCS Manager Claim the device on intersight as UCSM Managed Mode
- F. Option A
- G. Option B
- H. Option C
- I. Option D

Answer: C

NEW QUESTION 6

Refer to the exhibit.



A pair of Cisco Nexus switches form a vPC. A new chassis is added to the pre-existing Cisco UCS domain. A new chassis must be discovered, and all links from the chassis to the LAN network must be established. Which set of actions accomplishes these requirements?

- ☐ Set the chassis discovery policy action to four links.
Configure Eth1/3 and Eth1/4 as server ports.
Acknowledge the chassis.
- ☒ Set the chassis discovery policy action to four links.
Configure Eth1/1 and Eth1/2 as uplink Fibre Channel ports.
Set the link group preference to None.
- ☐ Set the chassis discovery policy action to one link.
Configure Eth1/1 and Eth1/2 as uplink Ethernet ports.
Set the link group preference to Port Channel.
- ☐ Set the chassis discovery policy action to one link.
Configure Eth1/3 and Eth1/4 as server ports.
Acknowledge the chassis.

- A. Option A
- B. Option B
- C. Option C
- D. Option D

Answer: C

NEW QUESTION 7

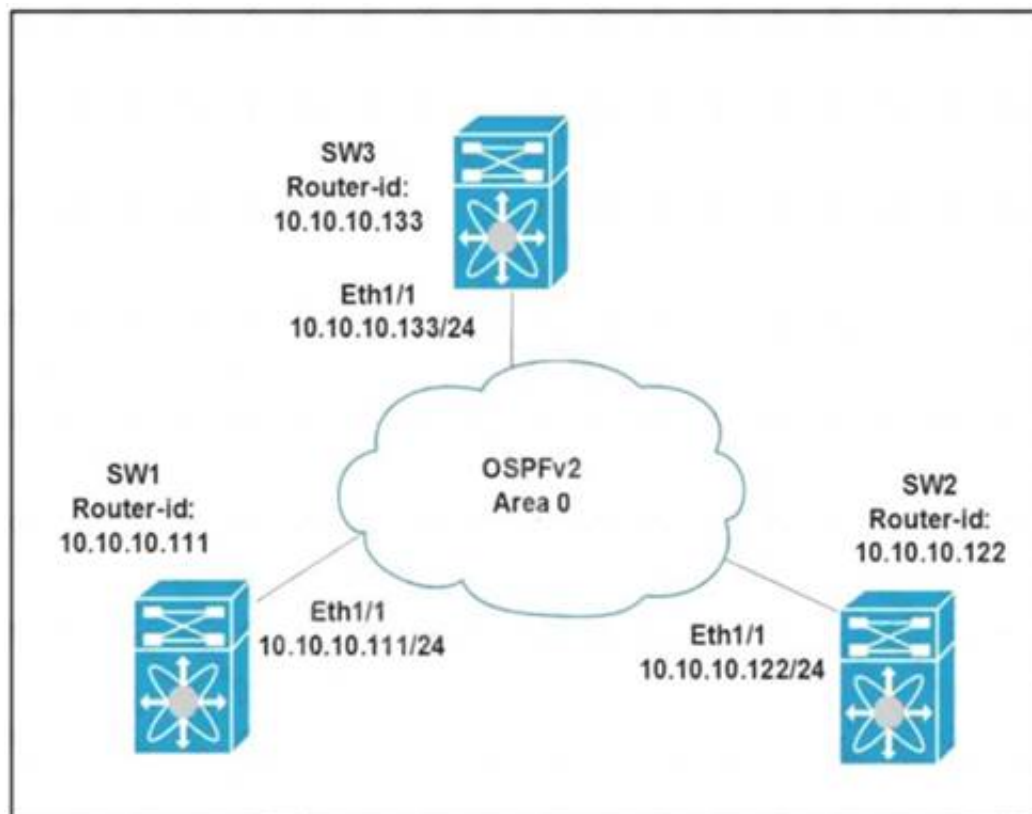
Which solution provides remote and direct file-level access to users and systems?

- A. direct-attached storage
- B. Fibre Channel over Ethernet
- C. storage area network
- D. network-attached storage

Answer: D

NEW QUESTION 8

Refer to the exhibit.



All switches are configured with the default OSPF priority. Which configuration should be applied to ensure that the SW2 Cisco Nexus switch controls the LSA floods and advertises the network to the remaining nodes in the OSPFv2 area?

- A. SW2# configure terminal SW2 (config)# interface ethernet 1/1 SW2 (config-if)# ip ospf priority 255
- B. SW2# configure terminal SW2 (config)# interface ethernet 1/1 SW2 (config-if)# ip ospf priority 1
- C. SW2# configure terminal SW2 (config)# router ospf 1 SW2 (config-router)# router-id 10.10.10.22
- D. SW2# configure terminal SW2 (config)# interface ethernet 1/1 SW2 (config-if)# ip ospf priority 0

Answer: A

Explanation:

Priority in OSPF is mainly used to influence/determine a designated router/backup designated router for a network. By default, the priority is 1 on all routers. A router with a high priority will always win the DR/BDR election process.

NEW QUESTION 9

A network administrator is creating a custom Django self-service portal that runs on a Linux server to automate the creation of new VLANs on Cisco UCS Manager. Which feature must be installed and configured on the server?

- A. Cisco ucs Powertool Suite
- B. Cisco DNA Center API
- C. Cisco AppDynamics
- D. Cisco UCS Python SDK

Answer: C

NEW QUESTION 10

An engineer creates a service profile in Cisco UCS Manager and must assign a policy that reboots blades when changes are applied. The changes must be applied only after user acknowledgment. Which two policies must be configured to meet these requirements? (Choose two.)

- A. Boot Policy
- B. Global Policy
- C. Power Control Policy
- D. Maintenance Policy
- E. Reboot Policy

Answer: DE

Explanation:

https://www.cisco.com/c/en/us/td/docs/unified_computing/ucs/ucs-manager/GUI-User-Guides/Admin-Managem

Maintenance Policy

The maintenance policy specifies how to deploy the service profile changes. The deployment can occur in one of the following ways:

- Immediately
- When acknowledged by a user with administrator privileges
- Automatically at the time specified in a schedule
- On the next reboot or shutdown without waiting for the user acknowledgment or the timer scheduling option

Reboot Policy field

When a service profile is associated with a server, or when changes are made to a service profile that is already associated with a server, you must reboot the server to complete the process. The **Reboot Policy** field determines when the reboot occurs for servers associated with any service profiles that include this maintenance policy. This can be one of the following:

- **Immediate**—The server reboots automatically as soon as the service profile association is complete or when you save service profile changes.
- **User Ack**—You must explicitly acknowledge the pending activities for the changes made to the service profile to be applied to the associated server.
- **Timer Automatic**—Cisco UCS defers all service profile associations and changes until the maintenance window defined by the schedule shown in the **Schedule** field.
- **On Next Boot**—This option is used in combination with either **User Ack** or **Timer Automatic**. When the **On Next Boot** option is enabled, the host OS reboot, shutdown, and reset, or server reset and shutdown also triggers the associated FSM to apply the changes waiting for the **User Ack**, or the **Timer Automatic** maintenance window.

Note De-selecting the On Next Boot option disables the Maintenance Policy on the BMC.

NEW QUESTION 10

A network engineer must SPAN only the ingress traffic of a Cisco MDS 9000 series switch from interface fc 1/23 to interface fc 1/24. Which two configuration must be applied to complete this task? (Choose two)



- A. Option A
- B. Option B
- C. Option C
- D. Option D

Answer: AC

NEW QUESTION 12

A storage array must be connected to port ethernet1/10 on a Cisco MDS 9000 Series Switch. In addition, the array must connect using the FCoE protocol and be single-homed. Which configuration meets these requirements?

- ☒ **vlan database**
vlan 101 fcoe
vsan 101 enable
interface vfc 10 vsan 101
- interface vfc 10**
switchport mode fcoe
switchport access vlan 101
bind interface ethernet1/10
- ☒ **vlan database**
vlan 101 vsan
vsan 101 fcoe
vsan 101 interface vfc 10
- interface ethernet1/10**
switchport mode trunk
bind interface vfc 10
fcoe vsan 101
- ☐ **vsan database**
vlan 101
vsan 101
fcoe vsan 101 interface vfc 10
- ☐ **interface 1/10**
switchport mode e
fcoe vfc 10
- ☐ **interface vfc 10**
switchport mode f
bind interface ethernet 1/10
- vsan database**
vsan 101
vlan 101
fcoe vsan 101
vsan 101 interface vfc 10

- A. Option A
B. Option B
C. Option C
D. Option D

Answer: D

NEW QUESTION 13

A network engineer is deploying a cisco ALL-flash hyperflex solution. Which local storage configuration is required for the operating system and persistent logging?

- A. Two solid state drives
B. Two SATA drives
C. One SATA drive
D. One solid state drive

Answer: D

NEW QUESTION 14

What is required for using puppet in a Cisco NX-OS environment?

- A. Open Agent Container
B. XML management interface
C. NX-API
D. OpenNP

Answer: A

NEW QUESTION 18

Which configuration generates a syslog message when CPU utilization is higher than 60%?

- A. event manager applet HIGH-CPUevent snmp oid 1.3.6.1.4.1.9.9.109.1.1.1.1.6.1 get-type exact entry-op gt 60 poll-interval 5 action 1.0 syslog priority notifications msg "cpu high"
- B. event manager applet HIGH-CPUevent snmp oid 1.3.6.1.4.1.9.9.109.1.1.1.1.6.1 get-type exact entry-op lt 60 poll-interval 5 action 1.0 syslog priority notifications msg "cpu high"
- C. event manager applet HIGH-CPUevent snmp oid 1.3.6.1.4.1.9.9.109.1.1.1.1.6.1 get-type next entry-op gt 60 poll-interval 5 action 1.0 syslog priority notifications msg "cpu high"
- D. event manager applet HIGH-CPUevent snmp oid 1.3.6.1.4.1.9.9.109.1.1.1.1.6.1 get-type next entry-op lt 60 poll-interval 5 action 1.0 syslog priority notifications msg "cpu high"

Answer: A

Explanation:

<https://www.cisco.com/c/en/us/support/docs/ip/internet-protocol-ip/200931-EEM-Subsystem-in-Order-to-Monitor-CPU-Tr.pdf>
<https://blog.ipspace.net/2008/06/generate-snmp-trap-on-high-cpu-load.html>

NEW QUESTION 21

Which two authentication types does Cisco UCS Manager support when configuration authentication? (Choose two.)

- A. local
- B. LDAP
- C. 802.1X
- D. Kerberos
- E. PAM

Answer: AB

Explanation:

https://www.cisco.com/c/en/us/td/docs/unified_computing/ucs/ucs-manager/GUI-User-Guides/Admin-Management/3-2/b_Cisco_UCS_Admin_Mgmt_Guide_3_2/b_Cisco_UCS_Admin_Mgmt_Guide_3_2_chapter_0101.html

NEW QUESTION 25

A network administrator attempts to automate the provisioning of several new Cisco Nexus switches. The administrator prepares a bootstrap configuration script for the task. Due to the number of switches, a zero-touch provisioning solution is preferred. Additionally, some switches arrive with outdated software and should be automatically upgraded as part of the provisioning workflow. Which solution meets the requirements?

- A. DHCP
- B. Ansible
- C. NX-API
- D. POAP

Answer: C

NEW QUESTION 27

A network engineer needs to configure system logging on the MDS switch. The messages must be displayed with the severity level of "warning" and above. For security reasons, the users must be logged out of the console after 5 minutes of inactivity. Which configuration must be applied to meet these requirements?

- ☐ MDS-A(config)# logging console 5
MDS-A(config-console)# exec-timeout 300
- ☒ MDS-A(config)# line console
MDS-A(config-console)# speed 38400
MDS-A(config-console)# exec-timeout 5
MDS-A(config)# logging console 4
- ☐ MDS-A(config)# console
MDS-A(config-console)# speed 38400
MDS-A(config-console)# session-limit 5
MDS-A(config)# logging console 5
- ☐ MDS-A(config)# logging line 4
MDS-A(config-console)# session-limit 300

- A. Option A
- B. Option B
- C. Option C
- D. Option D

Answer: B

Explanation:

DETAILED STEPS

	Command or Action	Purpose
Step 1	configure terminal Example: switch# configure terminal switch(config)#	Enters global configuration mode.
Step 2	line console Example: switch# line console switch(config-console)#	Enters console configuration mode.
Step 3	databits <i>bits</i> Example: switch(config-console)# databits 7	Configures the number of data bits per byte. The range is from 5 to 8. The default is 8.
Step 4	exec-timeout <i>minutes</i> Example: switch(config-console)# exec-timeout 30	Configures the timeout for an inactive session. The range is from 0 to 525600 minutes (8760 hours). A value of 0 minutes disables the session timeout. The default is 30 minutes.

NEW QUESTION 28

An engineer must configure RBAC in Cisco UCS Manager in an existing data center environment. Which two roles can be used to configure LAN Connectivity policies? (Choose two.)

- A. network-admin
- B. server-profile
- C. admin
- D. enable
- E. operations

Answer: AC

Explanation:

https://www.cisco.com/c/en/us/td/docs/unified_computing/ucs/sw/gui/config/guide/1-4/UCSM_GUI_Configuration_Guide_1_4_chapter9.html
https://www.cisco.com/c/en/us/td/docs/unified_computing/ucs/ucsm_privileges/3-2/UCSM-Privileges-3_2/UCSM-Privileges-3_2_chapter_01.html

NEW QUESTION 33

The engineer must configure SPAN on a cisco Nexus 5000 Series switch to get a capture of the traffic from these applications for an in-depth packet analysis. Which two characteristics must be considered? (Choose two.)

- A. The Ethernet, FC, vFC, port channel, SAN port channel can be used as SPAN source ports.
- B. The rx/tx option is available for VLAN or VSAN SPAN sessions.
- C. SPAN source port can be monitored in multiple SPAN sessions.
- D. Only Ethernet, FC, vFC, port channel port types can be a destination SPAN port.
- E. A SPAN source port cannot be a destination SPAN port.

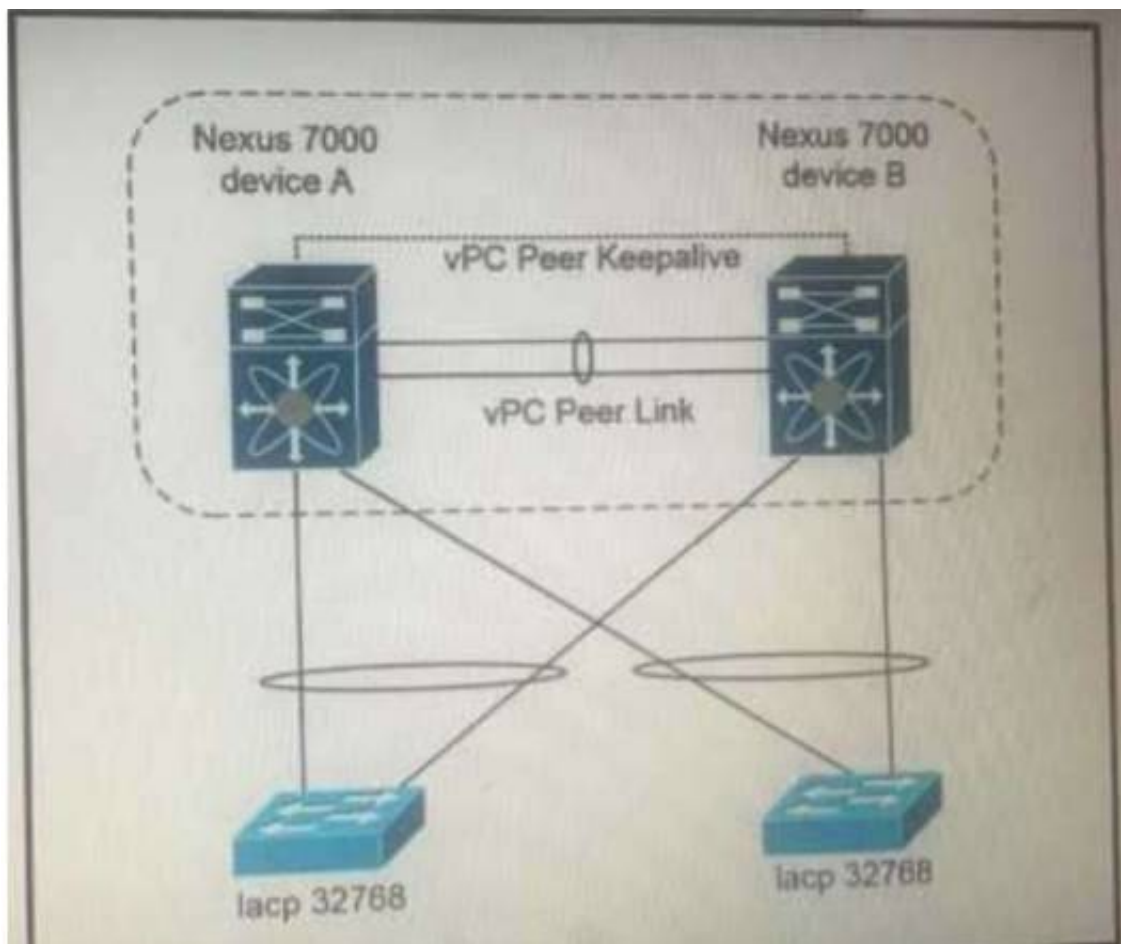
Answer: AE

Explanation:

https://www.cisco.com/en/US/docs/switches/datacenter/nexus5000/sw/configuration/guide/cli_rel_4_1/Cisco_N

NEW QUESTION 37

Refer to the exhibit.



Which configuration ensure that the cisco Nexus 7000 series switches are the primary devices for LACP?

- A. `N7K_A(config-vpc-domain)# system-priority 4000`
`N7K_B(config-vpc-domain)# system-priority 4000`
- B. `N7K_A(config-vpc-domain)# system-priority 100`
`N7K_B(config-vpc-domain)# system-priority 200`
- C. `N7K_A(config-vpc-domain)# system-priority 32768`
`N7K_B(config-vpc-domain)# system-priority 32768`
- D. `N7K_A(config-vpc-domain)# role priority 1`
`N7K_B(config-vpc-domain)# role priority 2`

- A. Option A
- B. Option B
- C. Option C
- D. Option D

Answer: C

NEW QUESTION 41

An engineer needs to create a new user in the local user database on Cisco UCS Fabric Interconnect. The user needs permissions to change the following configuration inside UCS Manager version 3.1:

- vNIC and vHBA profiles
- Fan speed and power redundancy profile of UCS Manager

Which two roles must be assigned to a user to achieve this goal? (Choose two.)

- A. server-compute
- B. facility-manager
- C. operations
- D. server-equipment
- E. server-profile

Answer: AD

NEW QUESTION 42

Refer to the exhibit. A network engineer must Improve the convergence time during vPC primary peer device failure and recovery. Which set of actions is required on both vPC switches to accomplish this task?

- A. Option A
- B. Option B
- C. Option C
- D. Option D

Answer: D

NEW QUESTION 45

An engineer must send JSON encoded telemetry data to an external collector. The transport mechanism must prevent tampering or forgery of the data. Which protocol accomplishes this goal?

- A. GPB
- B. HTTP
- C. gRPC
- D. DTLS

Answer: B

NEW QUESTION 46

An engineer must shut down the Ethernet 1/2 interface when the Ethernet 4/5 interface state is down. Drag and drop the CLI commands from the bottom onto the blanks in the exhibit to implement this EEM. Not all commands are used.

```
switch# configure terminal
switch(config)# track 1 
switch(config-track)# end

switch(config)# event manager applet track_4_5_down
switch(config-applet)# event track 1 state down
switch(config-applet)# action 1 syslog msg EEM applet
track_4_5_down shutting down port eth1/2 due to eth4/5
being down
switch(config-applet)# action 2 cli conf term
switch(config-applet)# action 3 cli 
switch(config-applet)# action 4 cli 
switch(config-applet)# end
```

interface ethernet 1/2

interface ethernet 4/5

no shut

shut

- A. Mastered
- B. Not Mastered

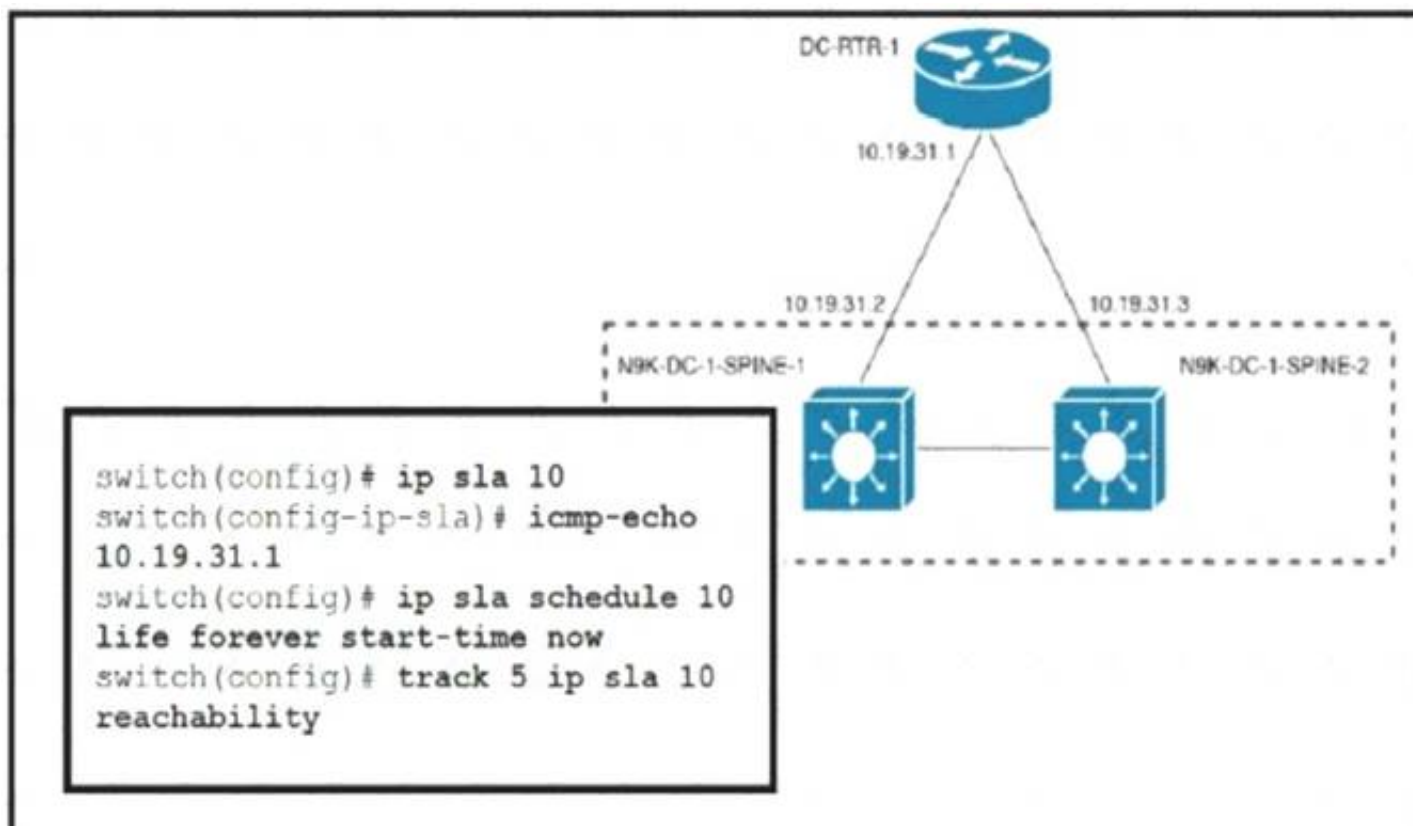
Answer: A

Explanation:

Text Description automatically generated

NEW QUESTION 50

Refer to the exhibit.



An engineer must invoke a Python script that alerts the operations team when the router DC-RTR-1 becomes unreachable. Which configuration set accomplishes this task?


```

track 3 ip sla 10 reachability
event name GATEWAY-DOWN
event state down
action cli command routerdown.py

scheduler job name ROUTER-DOWN
job track 9 state down
action 1.0 cli source routerdown.py
schedule 10

event scheduler name DOWN-ROUTER
event track 2 state 1 not up
event action 1.0 command source routerdown.py
event start 0:00 repeat 0:05

event manager applet ROUTER-DOWN-SLA
event track 5 state down
action 1.0 event-default
action 2.0 cli command source routerdown.py
  
```

- A. Option A
- B. Option B
- C. Option C
- D. Option D

Answer: D

NEW QUESTION 52

An engineer must configure a VXLAN routing on a cisco Nexus 9000 series Switch. The engineer requires a solution where all the leaf switches have the same gateway MAC and IP address. Which configuration set accomplishes this task?

- A)
- ```

NX9K(config)# fabric forwarding anycast-gateway-mac AA:BB:AA:BB:AA:BB
NX9K(config)# interface VLAN-interface-name
NX9K(config-if)# fabric forwarding mode anycast-gateway

```
- B)
- ```

NX9K(config)# fabric forwarding anycast-gateway-mac AA:BB:AA:BB:AA:BB
NX9K(config)# interface VLAN-interface-name
NX9K(config-if)# vrf member vrf-name
NX9K(config-if)# fabric forwarding mode anycast-gateway
  
```
- C)
- ```

NX9K(config)# install feature-set fabric
NX9K(config)# feature-set fabric
NX9K(config)# fabric forwarding anycast-gateway-mac AA:BB:AA:BB:AA:BB
NX9K(config)# interface VLAN-interface-name
NX9K(config-if)# vrf member vrf-name
NX9K(config-if)# fabric forwarding mode anycast-gateway

```
- D)
- ```

NX9K(config)# install feature-set fabric
NX9K(config)# feature-set fabric
NX9K(config)# fabric forwarding anycast-gateway-mac AA:BB:AA:BB:AA:BB
NX9K(config)# interface VLAN-interface-name
NX9K(config-if)# fabric forwarding mode anycast-gateway
  
```

- A. Option A
- B. Option B
- C. Option C
- D. Option D

Answer: C

NEW QUESTION 55

In an FCoE environment, for which two sets of data must an interface that implements the PAUSE mechanism always provision sufficient ingress buffer? (Choose two)

- A. frames that were sent with high credit
- B. frames that were processed and transmitted by the transmitter before the PAUSE frame left the sender
- C. frames that were sent on the link but not yet received.
- D. frames that were sent on the link and received.
- E. frames that were processed and transmitted by the transmitter after the PAUSE frame left the sender.

Answer: BC

Explanation:

https://www.cisco.com/c/en/us/td/docs/switches/datacenter/nexus7000/sw/fcoe/config/cisco_nexus7000_fcoe_config_guide_8x/configuring_fcoe.html

NEW QUESTION 59

A Cisco MDS 9000 Series Switch is configured for SAN Analytics and SAN Telemetry Streaming. An engineer must enable analytics for NVMe on interfaces in the range of fc1/1-12. Due to a large amount of traffic generated in the SAN environment, the data must be collected at regular intervals of 60 seconds from ports fc 1-12 and then for ports fc13-24 for the next 60 seconds. Ports in the range fc4/13-14 were already enabled for analytics. Which set of commands must be used to meet these requirements?

☒ interface fc1/1-12
port-sampling module 4 size 12 interval 60
analytics nvme

☐ interface fc1/1-12
port-sampling module 4 size 12 interval 60000
analytics type fc-scsi

☐ analytics port-sampling module 4 size 12 interval 60000

☐ interface fc1/1-12
analytics fc-scsi
analytics fc-nvme

☐ analytics port-sampling module 4 size 12 interval 60

☐ interface fc1/1-12
analytics type fc-nvme

- A. Option A
- B. Option B
- C. Option C
- D. Option D

Answer: D

NEW QUESTION 64

An engineer needs to install a new package on a Cisco Nexus 9000 Series Switch. What is the impact of running the install commit <filename> command on the switch?

- A. The switch is restarted after the upgrade is complete
- B. The package is used after the switch is restarted.
- C. The previous package that was in use is deleted from bootflash.
- D. The package is used in the running configuration.

Answer: B

NEW QUESTION 67

When deploying a Cisco HyperFlex edge with a pair of switches, what is the minimum number of interfaces in trunk mode required on each HX node?

- A. 1
- B. 2
- C. 4
- D. 6

Answer: B

NEW QUESTION 70

Drag and drop the NAS and NFS concepts from the left onto the definitions on the right.

Data storage and file sharing requests are sent and received.

The protocol is regularly used on Linux and UNIX systems.

Software is deployed on a lightweight OS that is embedded in the hardware.

The vendor-agnostic protocol is supported on any hardware and OS.

NFS

NAS

The Leader of IT Certification

visit - <https://www.certleader.com>

- A. Mastered
- B. Not Mastered

Answer: A

Explanation:

NFS

Data storage and file sharing requests are sent and received The protocol is regularly used on Linux segment

NAS

Software is deployed on a lightweight OS that is embedded in the hardware The vendor-agnostic protocol is supported on any hardware and OS

NEW QUESTION 71

Refer to the exhibit.

```
CISCO-UCS-A# scope org /
CISCO-UCS-A /org* # create service-profile Cisc01 instance
CISCO-UCS-A /org/service-profile* # set bios-policy bios1
CISCO-UCS-A /org/service-profile* # set boot-policy boot1
CISCO-UCS-A /org/service-profile* # set ext-mgmt-ip-state none
CISCO-UCS-A /org/service-profile* # set host-fw-policy ipmi-user987
CISCO-UCS-A /org/service-profile* # set identity dynamic-uuid derived
CISCO-UCS-A /org/service-profile* # set ipmi-access-profile ipmi1
CISCO-UCS-A /org/service-profile* # set local-disk-policy local1
CISCO-UCS-A /org/service-profile* # set maint-policy maint1
CISCO-UCS-A /org/service-profile* # set mgmt-fw-policy mgmt1
CISCO-UCS-A /org/service-profile* # set power-control-policy power1
CISCO-UCS-A /org/service-profile* # set scrub-policy scrub1
CISCO-UCS-A /org/service-profile* # set sol-policy sol1
CISCO-UCS-A /org/service-profile* # set stats-policy stats1
CISCO-UCS-A /org/service-profile* # set user-label Cisco
CISCO-UCS-A /org/service-profile* # vcon-policy vconnpolicy
CISCO-UCS-A /org/service-profile* # commit-buffer
CISCO-UCS-A /org/service-profile #
```

What is a characteristic presented in the service profile of the UUID?

- A. based on the hardware
- B. vendor assigned
- C. unique system generated
- D. allocated from a UUID pool

Answer: A

Explanation:

there is no parameter for 'set identity dynamic-uuid' to specify a pool name - you can only state "derived" or a 32 hex character string (128-bits, therefore full UUID).

ucspe /org/service-profile # set identity dynamic-uuid derived Derived

FFFFFFFF-FFFF-FFFF-FFFF-FFFFFFFFFFFFFF Dynamic UUID

The documentation, as usual for Cisco, is poor. Shagua references old v1.4.1 documentation but it's the same in 4.1. It's inaccurate as uuid-pool should now read uuid-suffix-pool. You can use UCSPE to check

the CLI with contextual help.

ucspe /org/service-profile # set identity dynamic-uuid Dynamic UUID dynamic-wwnn Dynamic WWNN uuid-suffix-pool UUID Suffix Pool wwnn-pool WWNN Pool

If set identity dynamic-uuid only gives us the option of a static UUID or the parameter "derived", and set identity uuid-suffix-pool is the option to assign a pool... I

would suggest that the most logical answer here is

- derived from the hardware. https://www.cisco.com/en/US/docs/unified_computing/ucs/sw/cli/config/guide/1.4.1/CLI_Config_Guide_1_4_1

NEW QUESTION 74

An engineer must configure a Cisco MDS 9000 Series Switch for traffic analysis from the storage array. The storage array is connected to the interface fc2/1 in VSAN 10 and the traffic analyzer to fc4/2. The capture file must include ingress and egress traffic between the switch and the storage array. Also, only traffic in VSAN 10 must be captured. Which configuration set meets these requirements?

A)

```
interface fc4/2
  switchport mode auto
  no shutdown
!
span session 1
  source interface fc2/1 rx
  destination interface fc4/2
  source filter vsan 10
  no suspend
```

B)


```
interface fc4/2
  switchport mode trunk
  switchport trunk allow vsan 10
  no shutdown
!
span session 1
  source interface fc2/1 tx
  destination interface fc4/2 rx
  no suspend
```

C)

```
interface fc4/2
  switchport mode SD
  no shutdown
!
span session 1
  source interface fc2/1
  destination interface fc4/2
  source filter vsan 10
```

D)

```
interface fc4/2
  switchport mode ST
  no shutdown
!
span session 1
  source interface fc2/1
  destination interface fc4/2
  source filter vsan 10
```

- A. Option A
- B. Option B
- C. Option C
- D. Option D

Answer: A**NEW QUESTION 75**

A network engineer must enable port security on all cisco MDS series switches in the fabric. The requirement is to avoid the extensive manual configuration of the switch ports. Which action must be taken to meet these requirements?

- A. Activate CFS distribution and the auto-learning port security feature.
- B. Activate CFS distribution and file auto-learning port security feature on a per-VSAN basis.
- C. Enable the auto-learning port security feature on a per-VSAN basis.
- D. Enable the auto-learning port security feature.

Answer: B**Explanation:**

You can instruct the switch to automatically learn (auto-learn) the port security configurations over a specified period. This feature allows any switch in the Cisco MDS 9000 Family to automatically learn about devices and switches that connect to it. Use this feature when you activate the port security feature for the first time as it saves tedious manual configuration for each port. You must configure auto-learning on a per-VSAN basis.

https://www.cisco.com/en/US/docs/storage/san_switches/mds9000/sw/rel_3_x/configuration/guides/fm_3_3_1/p

NEW QUESTION 80

What is an advantage of streaming telemetry over SNMP?

- A. on-change traps sent to a receiver
- B. periodic push-based subscription messages
- C. periodic polling of the device status
- D. MD5-based authentication on polling

Answer: B

NEW QUESTION 81

Which virtual MAC address is the default for HSRP version 2 group 10?

- A. 0000.5E00.0110
- B. 0000.0C9F.F00A
- C. 3716.1350.1C0A
- D. 0000.0C9F.F010

Answer: B

Explanation:

[https://www.cisco.com/c/en/us/td/docs/ios-xml/ios/ipapp_fhrp/configuration/xr-3s/fhp-xr-3s-book/fhp-hsrp-v2.h](https://www.cisco.com/c/en/us/td/docs/ios-xml/ios/ipapp_fhrp/configuration/xr-3s/fhp-xr-3s-book/fhp-hsrp-v2.html)

NEW QUESTION 85

A network engineer connects the CNA interface of a server to a switch. The switch must bring down all of the VLANs on the interface that are not enabled for FCoE, but the VLANs that are enabled for FCoE should continue to carry SAN traffic without interruption. Which configuration should be applied to the switch to achieve this objective?

- A. switch(config)# interface Ethernet 2/1 switch(config-if)# shutdown lan
- B. switch(config)# interface vfc 2 switch(config-if)# shutdown lan
- C. switch(config)# Interface Ethernet vfc 2 switch(config-if)# shutdown force
- D. switch(config)# interface Ethernet 2/1 switch(config-if)# shutdown force

Answer: A

NEW QUESTION 89

An engineer deploys a new Cisco Nexus 5000 Series Switch in an existing environment with strict security policies. The new device should meet these requirements:

- Secure end-user ports with minimum configuration effort.
- Log security breaches and require manual recovery.
- Retain the switch configuration if the device restarts.

Which configuration must be used?

- A.

```
switchport port-security
switchport port-security max 1
switchport port-security violation shutdown
```
- B.

```
switchport port-security
switchport port-security violation shutdown
switchport port-security mac-address dynamic
```
- C.

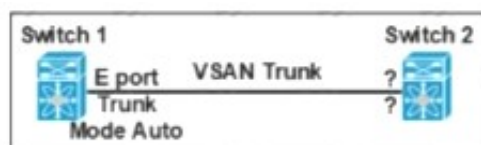
```
switchport port-security
switchport port-security max 1
switchport port-security mac-address sticky
```
- D.

```
switchport port-security
switchport port-security violation restrict
switchport port-security mac-address sticky
```

Answer: C

NEW QUESTION 91

Refer to the exhibit.



Which feature must be used to configure on switch 2 to establish a VSAN trunk between switch 1 and switch 2?

- A. F portTrunk Mode Passive
- B. E PortTrunk Mode On
- C. N PortTrunk Mode Active
- D. NP PortTrunk Mode Auto

Answer: B

NEW QUESTION 93

A network engineer configures a converged network adapter (CNA) and must associate a virtual fiber Channel 7 interface to VSAN 7. The CNA connected to the interface Eth1/7, and VLAN 700 is mapped to the VSNA. Which configuration must be applied to create the virtual Fiber Channel interface and associate it with the Ethernet physical interface?

A)

```
switch(config)# vlan 700
switch(config-vlan)# fcoe vsan 7
```

B)

```
switch(config)# vsan database
switch(config-vsan)# vsan 7 interface vfc 7
```

C)

```
switch(config)# interface ethernet 1/7
switch(config-if)# vfc 7 attach vlan 1,700
```

D)

```
switch(config)# interface vfc 7
switch(config-if)# bind interface ethernet 1/7
```

- A. Option A
- B. Option B
- C. Option C
- D. Option D

Answer: D**NEW QUESTION 97**

What is an advantage of NAS compared to SAN?

- A. It offers enhanced NFS features.
- B. It offers enhanced security features
- C. It functions in an existing IP environment.
- D. It provides lossless throughput.

Answer: C**NEW QUESTION 102**

An engineer must configure SAN connectivity in Cisco UCS manager. The requirement is to specify the WWPN of the storage array and set the zoning type to single initiator multiple targets. The engineer must also configure interrupt handling and queues of the vHBA interface. Which two Cisco UCS policies should be used to configure the settings? (Choose two.)

- A. storage connection policy
- B. SAN connectivity policy
- C. vHBA policy
- D. Fibre Channel adaptor policy
- E. boot policy

Answer: AD**NEW QUESTION 103**

A cisco Nexus 9000 series switch experiences a startup configuration corruption. The engineer must implement a procedure to recover configuration file from the switch. Which command set must be used?

- A. * 1. Copy the running-configuration to the startup configuration.* 2. Clear the current configuration of the switch.* 3. Restart the device.* 4. Copy a previously saved configuration file to the running configuration.
- B. * 1. Clear the current configuration of the switch* 2. Restart the device.* 3. Copy the running configuration to the startup configuration* 4. Copy a previously saved configuration file to the running configuration
- C. * 1. Clear the current configuration of the switch* 2. Restart the device.* 3. Copy a previously saved configuration file to the running-configuration* 4. Copy the running-configuration to the startup configuration.
- D. * 1.Restarting device.* 2. Copy the running-configuration file to a remote server.* 3. Clear the current configuration of the switch.* 4. Copy the running configuration to the startup configuration

Answer: C**Explanation:**

Problems, such as memory corruption, can occur that make it necessary for you to recover your configuration from a backed-up version.

Each time that you enter a copy running-config startup-config command, a binary file is created and the ASCII file is updated. A valid binary configuration file reduces the overall boot time significantly. A binary file cannot be uploaded, but its contents can be used to overwrite the existing startup configuration. The write erase command clears the binary file.

SUMMARY STEPS

- * 1. write erase
- * 2. reload
- * 3. copy configuration-file running-configuration
- * 4. copy running-config startup-config <https://www.cisco.com/c/en/us/td/docs/switches/datacenter/nexus9000/sw/93x/fundamentals/configuration/guide>

NEW QUESTION 105

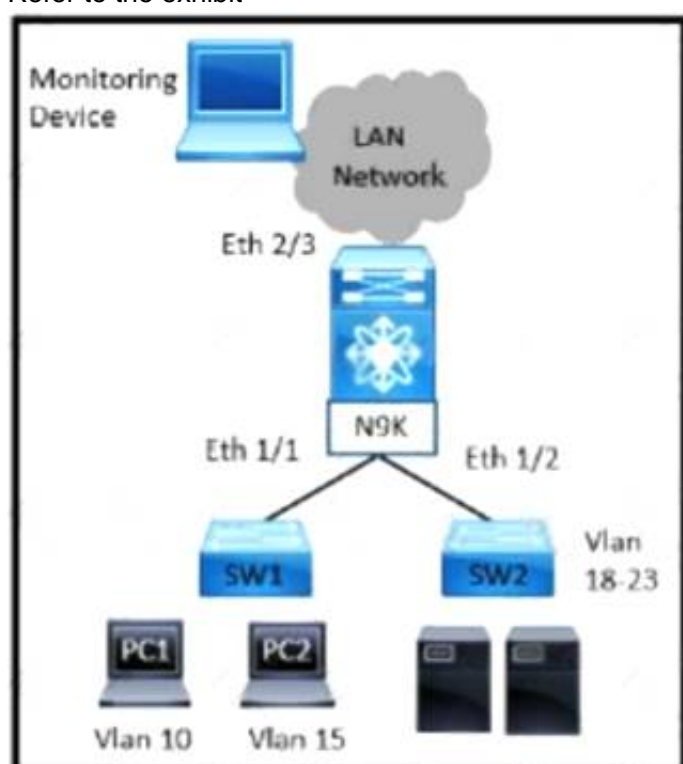
An engineer must perform a backup operation of the Cisco UCS system. The backup must be transferred to a secure location using UDP and must contain information about VLANs, VSANs, and other policies. Also, the operations team requires the backup file to be in a human-readable format. Which configuration set meets these requirements?

- A. Type: System configuration Protocol: SCP
- B. Type: Logical configuration Protocol: TFTP
- C. Type: All configuration Protocol: FTP
- D. Type: Full state Protocol: SFTP

Answer: B

NEW QUESTION 106

Refer to the exhibit



A network administrator experiences these issues with the network:

- > PC1 is experiencing a buffering problem for video applications
- > The servers that are connected to SW2 are experiencing packet drops when they connect to the Internet

The engineer wants to configure the required traffic capture to investigate the issue further. Which configuration must be implemented to monitor the traffic?

- ☐ N9K(config)# monitor session 5 rx
N9K(config)# monitor session 5 tx
N9K(config-monitor)# description Span_session_5
N9K(config-monitor)# source interface ethernet 1/1
N9K(config-monitor)# source interface ethernet 1/2
N9K(config-monitor)# destination interface ethernet 2/3
- ☐ N9K(config)# monitor session 5 tx
N9K(config-monitor)# description Span_session_5
N9K(config-monitor)# source interface ethernet 1/1
N9K(config-monitor)# source interface ethernet 1/2
N9K(config-monitor)# destination interface ethernet 2/3
- ☐ N9K(config)# monitor session 5 tx
N9K(config-monitor)# description Span_session_5
N9K(config-monitor)# source vlan 10-15 rx
N9K(config-monitor)# source interface ethernet 1/2
N9K(config-monitor)# destination interface ethernet 2/3
- ☒ N9K(config)# monitor session 5 rx
N9K(config-monitor)# description Span_session_5
N9K(config-monitor)# source vlan 10 rx
N9K(config-monitor)# source interface ethernet 1/2
N9K(config-monitor)# destination interface ethernet 2/3

- A. Option A
- B. Option B
- C. Option C
- D. Option D

Answer: D

NEW QUESTION 111

A customer deploys a media server to distribute streaming videos to network clients. The requirement is to allow the video feed to reach only requesting clients. The shared trees must not propagate the video feed if no clients from that tree request it. To reduce configuration touchpoints, the solution must support the automatic discovery and announcement of RP-set information. Each router in the network is responsible for selecting the RP. Which configuration set meets these requirements?

A)

```
router(config-if)# ip pim bidir-enable
router(config)# ip pim ssm default
router(config)# ip igmp version 3
```

B)

```
router(config-if)# ip pim dense-mode
router(config)# ip pim rp-address 1.1.1.1
router(config)# ip pim rp listener
```

C)

```
router(config-if)# ip pim sparse mode
router(config)# ip pim bsr-candidate Lo0
router(config)# ip pim rp-candidate Lo0
```

D)

```
router(config-if)# ip pim sparse-sense mode
router(config)# ip pim auto-rp
router(config)# ip pim send-rp-announce
```

- A. Option A
- B. Option B
- C. Option C
- D. Option D

Answer: D

NEW QUESTION 115

An engineer must implement a VXLAN-based data center interconnect. The long-distance transport provided by a service provider is IP-based, supports a maximum MTU of 1554 bytes, and does not support outbound traffic replication. Which action must be taken to build the data center interconnect?

- A. Configure a route map to associate the IPs of the remote VTEPs.
- B. Create an IP access list and associate it with VNI to replicate traffic to remote VTEPs.
- C. Announce host reachability over BGP.
- D. Implement BGP EVPN ingress replication.

Answer: D

NEW QUESTION 119

A customer has a requirement for an automation solution that supports periodically acquiring configuration from a centralized server and aligning UCS servers to their desired state. Which open-source tool meets these requirements?

- A. SaltStack
- B. Terraform
- C. Puppet
- D. Kubemetes

Answer: C

Explanation:

"Overview of Puppet architecture: [...] After it receives a catalog, the Puppet agent applies the catalog by checking each resource that the catalog describes. If it finds any resources that are not in their desired state, it makes any changes necessary to correct them."

https://www.cisco.com/c/dam/en/us/products/collateral/servers-unified-computing/ucs-c-series-rackservers/whitepaper_c11-740103.pdf

<https://www.cisco.com/c/dam/en/us/products/collateral/servers-unified-computing/ucs-devops-integration-sol-br>

from DCCOR book under Puppet section The operation of the Puppet agent involves periodically connecting to the Puppet master, which in turn compiles and sends a configuration manifest to the agent. The agent reconciles this manifest with the current state of the node and updates state that is based on differences.

NEW QUESTION 123

Which two statements describe the process of upgrading an EPLD on a Cisco MUS 9000 Series Switch? (Choose two)

- A. EPLDs are capable to be upgraded without replacing the hardware
- B. The CPLDs for all the modules on a switch must be upgraded at the same time
- C. An upgrade verification identifies the impact of each EPLD upgrade
- D. EPLDs are only capable to be upgraded to the latest F
- E. D image
- F. EPLD upgrades are capable to be completed without powering down the module during the upgrade

Answer: AC

NEW QUESTION 126

Refer to the exhibit.

```
N5K-1 (config)#interface fc2/3
N5K-1 (config-if)#switchport mode sd
N5K-1 (config-if)# no shutdown
```

What is the result of implementing this configuration?

- A. The Fibre Channel interface is configured for synchronization distribution.
- B. The Fibre Channel interface is configured for SPAN.
- C. The Fibre Channel interface is configuration for source distribution.
- D. The Fibre Channel interface is configured for FSPF.

Answer: B

Explanation:

https://www.cisco.com/c/en/us/td/docs/switches/datacenter/nexus5000/sw/san_switching/421_n1_1/b_Cisco_n5k_nxos_sanswitching_config_guide_rel421_n1_1/Cisco_n5k_nxos_sanswitching_config_guide_rel4

https://www.cisco.com/en/US/docs/switches/datacenter/nexus5000/sw/configuration/guide/cli_rel_4_1/Cisco_Nexus_5000_Series_Switch_CLI_Software_Configuration_Guide_chapter50.html

NEW QUESTION 127

When a strict CoPP policy is implemented, which statement describes an event during which packets are dropped?

- A. Fifteen SSH sessions remain connected to the switch.
- B. A large system image is copied to a switch by using the default VRF.
- C. A ping sweep is performed on a network that is connected through a switch.
- D. A web server that is connected to a switch is affected by a DDoS attack.

Answer: B

Explanation:

A large image upload is more probable to generate that level of traffic.

15 SSH session would mean an average of 200pps per session, and they simply mention that the session remain connected, if there are no inputs in them they have 0pps and even a full config push would probably not require 200 packets total.

```
class copp-system-p-class-management set cos 2
```

police cir 3000 pps bc 32 packets conform transmit violate drop

https://www.cisco.com/c/en/us/td/docs/switches/datacenter/nexus9000/sw/6-x/security/configuration/guide/b_Cisco_Nexus_9000_Series_NX-OS_Security_Configuration_Guide/b_Cisco_Nexus_9000_Series_NX-OS_Security_Configuration_Guide_chapter_010001.html

NEW QUESTION 131

An engineer must implement an automation solution to allow the backup of the configuration of cisco Nexus series switches to a centralized location. The solution must:

- * Support the team-developed custom monitoring scripts that are packaged using RPM packaging that the framework must support.
- * Be developed from the underlying cisco Nexus operating system.
- * Have no impact on the operating system of the underlying switch if the resource contention occurs.
- * Use Pvython to expand the existing automation framework. Which solution meets these requirements?

- A. Guest Shell
- B. Bash Shell
- C. TCL Shell
- D. Vegas Shell

Answer: A

NEW QUESTION 135

An engineer must implement protection against ICMP DoS attacks on a Cisco Nexus 9000 Series Switch. The requirement is to rate-limit ICMP without denying all other ICMP traffic. The ICMP traffic currently passing through the Cisco Nexus 9000 device must not be affected. Which configuration accomplishes these goals?

- A. Configure SNMP traps to send the ICMP notification if the CPU utilization is more than 90%.
- B. Reconfigure the Layer 3 interfaces to be in the non-default VRF and ICMP broadcast storm control
- C. Create an access list to deny ICMP traffic and apply it to all interlaces in the inside direction.
- D. Apply a control plane service policy that matches all ICMP traffic to drop the traffic fiat exceeds the threshold.

Answer: D

NEW QUESTION 140

Which two firmware packages are included in the Cisco UCS C-Series Rack-Mount UCS-Managed Server Software bundle? (Choose two.)

- A. system
- B. third-party
- C. PSU
- D. CIMC
- E. BIOS

Answer: DE

Explanation:

https://www.cisco.com/c/en/us/td/docs/unified_computing/ucs/ucs-manager/GUI-User-Guides/Firmware-Mgmt/

Cisco UCS C-Series Rack-Mount UCS-Managed Server Software Bundle

This bundle includes the following firmware images that are required to update components on rack-mount servers that have been integrated with and are managed by Cisco UCS Manager:

- CIMC firmware
- BIOS firmware
- Adapter firmware
- Storage controller firmware

NEW QUESTION 145

A network engineer is configuring the Cisco UCS service profile template with Ansible using this code.

```
hostname: 192.168.10.23
username: cisco
password: f718c4329405088301f6247ff982
name: DCE-CTRL
template_type: updating-template
uuid_pool: UUID-POOL
storage_profile: DCE-StgProf
maintenance_policy: default
server_pool: Container-Pool
host_firmware_package: 4.1(1a)
bios_policy: Docker
```

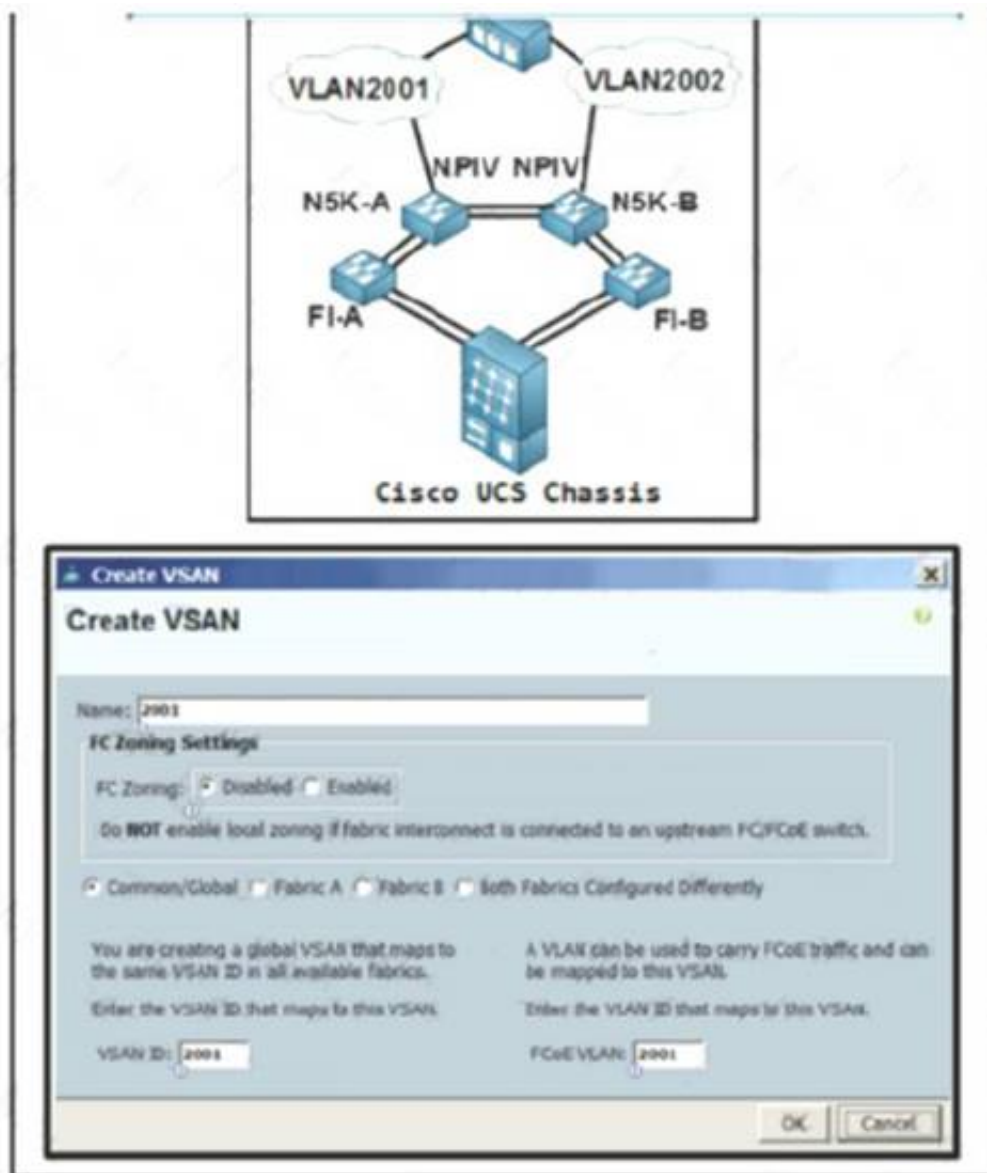
Which attribute must be used to apply the iSCSI initiator identifiers to all iSCSI vNICs for the service profiles derived from the service template?

- A. san_connectivity_policy
- B. iqn_pool
- C. boot_policy
- D. lan_connectivrtty_policy

Answer: B

NEW QUESTION 146

Refer to the exhibit.



An engineer is configuring a VSAN on the network Which option must be selected to create the VSAN?

- A. Fabric B
- B. FC Zoning Enabled
- C. Fabric A
- D. Common/Global

Answer: C

Explanation:

<https://www.cisco.com/c/en/us/td/docs/switches/datacenter/mds9000/sw/nx-os/configuration/guides/fabric/fabric>
https://www.cisco.com/c/en/us/td/docs/unified_computing/ucs/ucs-central/GUI-User-Guides/Storage-Mgmt/1-5/

NEW QUESTION 151

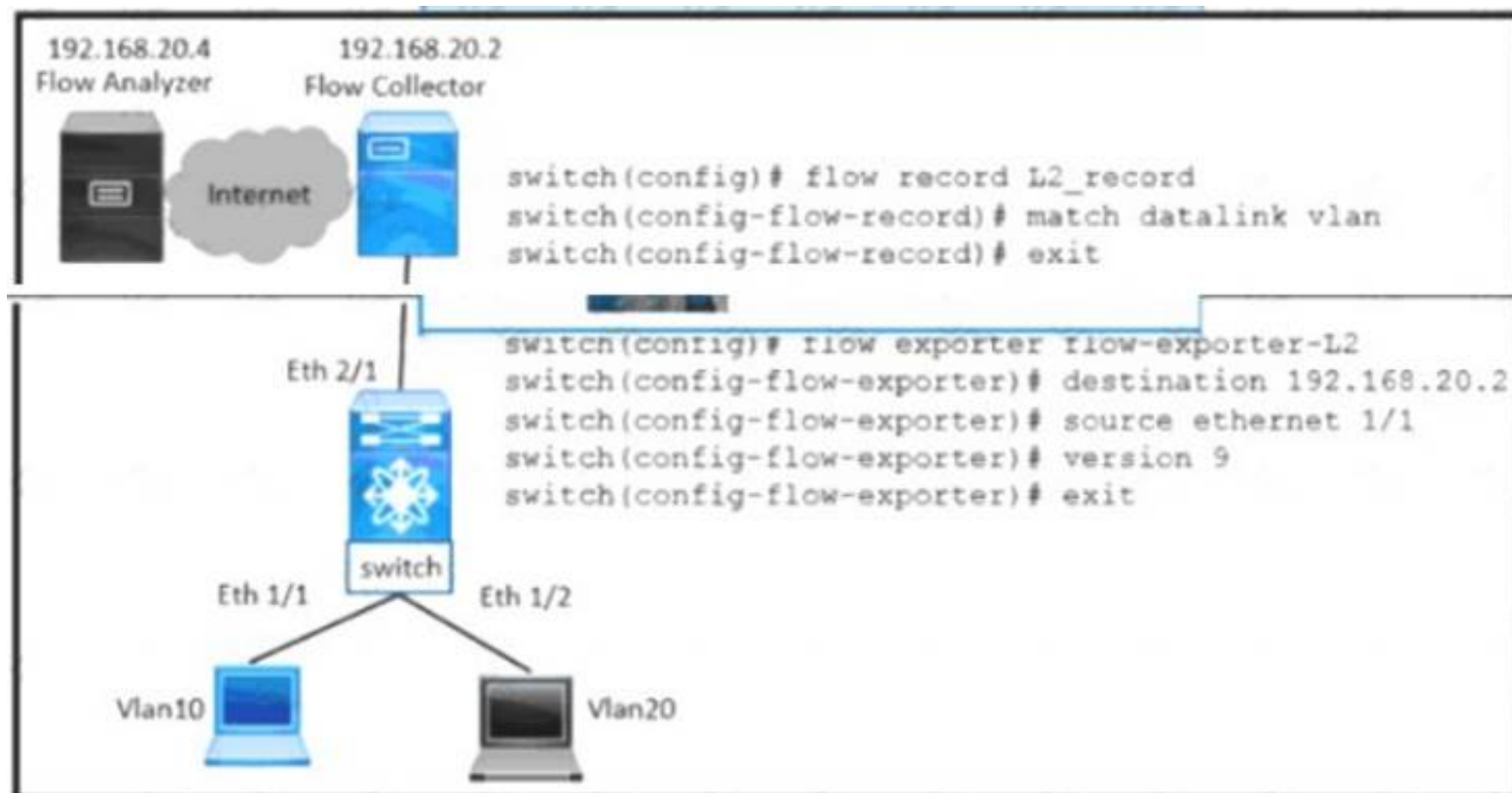
Due to a major version change, an engineer must perform a software upgrade on a Cisco Nexus Series switch. Which two technologies can be implemented to reduce disruptions to the network during the upgrade? (Choose two.)

- A. MLAG
- B. HSRP
- C. PAgP
- D. VDC
- E. vPC

Answer: BE

NEW QUESTION 152

Refer to the exhibit.



VLAN 10 is experiencing delays and packet drops when the traffic is forwarded through the switch. The destination flow analyzer accepts traffic captures of not more than 30 seconds. Which configuration implements the traffic capture that meets the requirements?

- ☐ switch(config)# flow timeout 30000
switch(config)# interface ethernet 1/1
switch(config-if)# switchport
switch(config-if)# switchport access vlan 10
switch(config-if)# ip flow monitor L2_monitor output
- ☐ switch(config)# flow timeout 30
switch(config)# interface ethernet 1/1
switch(config-if)# switchport
switch(config-if)# switchport access vlan 10
switch(config-if)# mac packet-classify
switch(config-if)# layer2-switched flow monitor L2_monitor input
- ☐ switch(config)# interface ethernet 1/1
switch(config-if)# flow timeout 30
switch(config-if)# switchport access vlan 10
switch(config-if)# mac packet-classify
switch(config-if)# ip flow monitor L2_monitor input
- ☐ switch(config)# interface ethernet 1/1
switch(config)# flow timeout 30000
switch(config-if)# switchport
switch(config-if)# layer2-switched flow monitor L2_monitor output
switch(config-if)# switchport access vlan 10

- A. Option A
- B. Option B
- C. Option C
- D. Option D

Answer: B

Explanation:

https://www.cisco.com/c/en/us/td/docs/switches/datacenter/nexus9000/sw/7-x/system_management/configuration
https://www.cisco.com/c/en/us/td/docs/switches/datacenter/sw/4_2/nx-os/system_management/configuration/gu

NEW QUESTION 154

The FCoE technology is used in a data center and the MDS switches are configured as Fibre Channel Forwarders. What configuration should be applied to an MDS switch in order to be used as the best switch to connect by the CNAs in the fabric?

- A. fcoe fcf-priority 1024
- B. fcoe fcf-priority 512
- C. fcoe fcf-priority 0
- D. no fcoe fcf-priority

Answer: C

Explanation:

https://www.cisco.com/c/en/us/td/docs/switches/datacenter/nexus5000/sw/fcoe/521n11/b_5k_FCoE_Config_521N11_chapter_011.pdf

NEW QUESTION 156

An engineer must create a scheduler configuration to create two backup jobs per day. The backup file must be copied to a server in the operations VRF. Which configuration accomplishes this task?

A)

```
scheduler schedule name CNFGBACKUP
  job name BACKUP-JOB
  copy running-config tftp://10.19.11.12/$(SWITCHNAME)-$(TIMESTAMP).cfg vrf operations
  time start now repeat 12:00
```

B)

```
scheduler schedule name CNFGBACKUP
  job name BACKUP-JOB
  show tech-support | redirect vrf operations tftp://10.19.11.12/$(SWITCHNAME)-$(TIMESTAMP).cfg
  time start daily 12:30 0:30
```

C)

```
scheduler schedule name CNFGBACKUP
  job name BACKUP-JOB
  copy startup-config tftp://10.19.11.12/$(SWITCHNAME)-$(TIMESTAMP).cfg
  time daily 12:30 0:30
```

D)

```
scheduler schedule name CNFGBACKUP
  job name BACKUP-JOB
  copy vrf operations config tftp://10.19.11.12/$(SWITCHNAME)-$(TIMESTAMP).cfg
  time start 12:30 repeat 12
```

A. Option A

B. Option B

C. Option C

D. Option D

Answer: A

NEW QUESTION 160

A customer requires a solution to orchestrate the configuration of storage arrays, firewalls, and Cisco ACI networking. Additionally, the orchestration product must support open automation and a service catalog. Which solution meets these requirements?

A. Cisco UCS Director

B. Cisco Intersight

C. Cisco Data Center Network Manager

D. Cisco Workload Optimization Manager

Answer: C

NEW QUESTION 163

The EPLD update of the supervisor module has been scheduled for several cisco MDS 9000 switches. What will be the impact of the update?

A. All control plane traffic is stopped for the duration of the EPLD update and the switch remain operational for the duration of the upgrade.

B. The redundant supervisor takes over while the EPLD update is in progress and there is no service disruption.

C. All traffic is stopped for the duration of the EPLD update and the switch is rebooted after the upgrade is completed.

D. The redundant supervisor takes over while the EPLD update is in progress and the switch is rebooted after the upgrade is completed.

Answer: C

Explanation:

An EPLD update of the supervisor module of fabric switches (Cisco MDS 9100, Cisco MDS 9200, and Cisco MDS 9300 Series switches) is disruptive since there is no redundant supervisor to take over while the update is in progress. All traffic through the system is stopped for the duration of the update and the switch is rebooted after the upgrade has completed. The update may take up to 30 minutes to complete.

https://www.cisco.com/c/en/us/td/docs/switches/datacenter/mds9000/sw/6_2/release/notes/epld/epld_rn.html#pg

NEW QUESTION 165

Which statement describes monitoring Fibre Channel traffic on a Cisco UCS 6332 Fabric Interconnect?

A. Fibre Channel traffic is monitored only on one vHBA per server.

B. The destination port for monitoring must be an unassigned Fibre Channel port.

C. The monitoring of Fibre Channel traffic is limited to the default VSAN.

D. Fibre Channel traffic is capable to be monitored as it is encapsulated as FCoE.

Answer: D

Explanation:

You can monitor Fibre Channel traffic using either a Fibre Channel traffic analyzer or an Ethernet traffic analyzer. When Fibre Channel traffic is monitored with an

Ethernet traffic monitoring session, at an Ethernet destination port, the destination traffic is FCoE. The Cisco UCS 6300 Fabric Interconnect supports FC SPAN only on the ingress side. A Fibre Channel port on a Cisco UCS 6248 Fabric Interconnect cannot be configured as a source port.

[https://www.cisco.com/c/en/us/td/docs/unified_computing/ucs/ucs-manager/GUI-User-Guides/System-](https://www.cisco.com/c/en/us/td/docs/unified_computing/ucs/ucs-manager/GUI-User-Guides/System-Monitoring/3-2/b_UCSM_GUI_System_Monitoring_Guide_3_2/b_UCSM_GUI_System_Monitoring_Guide_3_2_chapter_01101.pdf)

[Monitoring/3-2/b_UCSM_GUI_System_Monitoring_Guide_3_2/ b_UCSM_GUI_System_Monitoring_Guide_3_2_chapter_01101.pdf](https://www.cisco.com/c/en/us/td/docs/unified_computing/ucs/ucs-manager/GUI-User-Guides/System-Monitoring/3-2/b_UCSM_GUI_System_Monitoring_Guide_3_2/b_UCSM_GUI_System_Monitoring_Guide_3_2_chapter_01101.pdf)

NEW QUESTION 170

Refer to the exhibit

```
switch1#show run interface Vlan 10

interface Vlan10
  description Service Datacenter-Rack-A
  ip address 209.165.200.225 255.255.255.224
!
end

switch1#
```

An engineer must mirror the traffic on a switch. The engineer locates the server port that requires monitoring on switch1, but the packet sniffer is on switch2. The engineer must configure the source IP address on switch1. Which command accomplishes this goal?

- A. monitor session 10 type erspan-source
- B. monitor erspan origin ip-address 209.165.200.225
- C. source ip 209.165.200.225
- D. source interface vbn512

Answer: B

NEW QUESTION 173

What is an advantage of NFS as compared to Fibre Channel?

- A. NFS enables thin provisioning for LUNs.
- B. NFS provides the dynamic allocation of storage capacity.
- C. NFS removes the impact of IP overhead.
- D. NFS provides direct access to the underlying storage hardware.

Answer: B

Explanation:

<https://www.ciscolive.com/c/dam/r/ciscolive/apjc/docs/2018/pdf/BRKINI-1011.pdf>

NEW QUESTION 177

An engineer must perform a software upgrade on a production Cisco Nexus 7000 Series Switch. Before the upgrade activity, the requirement is for all ports to be shut down and routing protocols to terminate gracefully.

Which feature must be used to meet these requirements?

- A. Configuration Profile
- B. Maintenance Mode Profile
- C. Switch Profile
- D. Service Profile Template

Answer: B

NEW QUESTION 180

Which command reduces the amount of time it takes to complete the ISSU on a Cisco Nexus 7000 series switch that has dual supervisor modules and two I/O modules?

- A. install all kickstart <image>system<image>parallel
- B. install all epld bootflash:<image>
- C. install all epld bootflash:<image>
- D. install all kickstart<image>system<image>

Answer: A

Explanation:

Graphical user interface, text, application Description automatically generated

Parallel Upgrade

Parallel Upgrade with I/O Modules

Starting with Cisco NX-OS Release 5.2(1), multiple linecards can be simultaneously upgraded, and the infrastructure support is available. This decreases the ISSU time when compared with an ISSU upgrade that is done serially (one card at a time).

To start a parallel upgrade, use the following command: **install all kickstart image system image parallel**

Up to three linecards can be upgraded in parallel with this command. During the upgrade process, the upgrade of the linecards is displayed in the output as follows:

```
Non-disruptive upgrading.
[#          ] 0%
Module 5 upgrade completed successfully.
```

```
Module 3 upgrade completed successfully.
```

https://www.cisco.com/c/en/us/td/docs/switches/datacenter/nexus7000/sw/upgrade/guide/cisco_nexus7000_software_upgrade_and_downgrade_guide_8x.html

https://www.cisco.com/c/en/us/td/docs/switches/datacenter/sw/7_x/nx-os/upgrade/guide/b_Cisco_Nexus_7000_Series_NX-OS_Software_Upgrade_and_Downgrade_Guide_Release_7-x.html#d54e307a1635

NEW QUESTION 185

The Cisco Nexus switch Generic Online Diagnostics policy for a PortLoopback test requires 10 consecutive failures to error disable the port. The customer wants to change it to 5 consecutive failures. Which configuration applies the changes for module 1 only?

- ☒ **Nexus(config)# event manager applet custom-PortLoopback override __PortLoopback**
Nexus(config-applet)# event gold mod all test PortLoopback testing-type bootup consecutive-failure 5
Nexus(config-applet)# action 1 publish-event
- ☐ **Nexus(config)# event manager applet custom-PortLoopback override __PortLoopback**
Nexus(config-applet)# event gold mod 1test PortLoopback testing-type bootup consecutive-failure 5
Nexus(config-applet)# action 1 publish-event
- ☐ **Nexus(config)# event manager applet custom-PortLoopback override __PortLoopback**
Nexus(config-applet)# event gold mod all test PortLoopback testing-type monitoring consecutive-failure 5
Nexus(config-applet)# action 1 policy-default
- ☐ **Nexus(config)# event manager applet custom-PortLoopback override __PortLoopback**
Nexus(config-applet)# event gold mod 1 test PortLoopback testing-type monitoring consecutive-failure 5
Nexus(config-applet)# action 1 policy-default

- A. Option A
- B. Option B
- C. Option C
- D. Option D

Answer: D

Explanation:

“mod all” is incorrect. “mod 1test” is incorrect. “publish event” is incorrect. “mod 1 test” is correct. It is with “policy-default”.

https://www.cisco.com/c/en/us/td/docs/switches/datacenter/nexus7000/sw/system-management/guide/b_Cisco_Nexus_7000_Series_NX-OS_System_Management_Configuration_Guide-RI/configuring_online_diagnostics.html

https://www.cisco.com/c/en/us/td/docs/switches/datacenter/nexus9000/sw/93x/system-management/bcisco-nexus-9000-series-nx-os-system-management-configuration-guide-93x/b-cisco-nexus-9000-seriesnxos-system-management-configuration-guide-93x_chapter_011010.html

<https://www.ciscolive.com/c/dam/r/ciscolive/us/docs/2017/pdf/BRKDCN-3234.pdf>

NEW QUESTION 189

A DNS server with IP address 192.168.1.1 is deployed in a data center A network engineer must configure a Cisco UCS Fabric Interconnect to use this DNS. Which configuration should be applied?

- ☒ **ficl-mgmt-A# scope system**
ficl-mgmt-A /system # create dns 192.168.1.1
ficl-mgmt-A /system* # commit-buffer
- ☐ **ficl-mgmt-A# scope fabric-interconnect a**
ficl-mgmt-A /fabric-interconnect # set name 192.168.1.1
ficl-mgmt-A /fabric-interconnect # scope system
ficl-mgmt-A /system # commit-buffer
- ☐ **ficl-mgmt-A# scope fabric-interconnect a**
ficl-mgmt-A /fabric-interconnect # set name 192.168.1.1
ficl-mgmt-A /fabric-interconnect* # commit-buffer
- ☐ **ficl-mgmt-A# scope system**
ficl-mgmt-A /system # scope services
ficl-mgmt-A /system/services # create dns 192.168.1.1
ficl-mgmt-A /system/services* # commit-buffer

- A. Option A
- B. Option B
- C. Option C
- D. Option D

Answer: D

NEW QUESTION 194

Which two actions should be performed before upgrading the infrastructure and firmware of multiple UCS blades? (Choose two)

- A. Verify if the bootflash on the fabric interconnects in the Cisco UCS has at least 15% available space
- B. Enable Smart Call Home feature during the firmware upgrade process
- C. Verify if the bootflash on the fabric interconnects in the Cisco UCS has at least 10% available space
- D. Run the Check Conformance feature to verify that all your components are running the compatible firmware version after the upgrade
- E. Get Full State and All Configuration backup files before beginning the upgrade

Answer: DE

NEW QUESTION 199

An engineer configures the properties of a Cisco UCS Cisco Integrated Management Controller network adapter for a standalone Cisco C-Series server. The Fallback Timeout in the vNIC was set to 600. When the failure occurs, the secondary must be used and then fallback when the primary interface becomes available again. Which action be taken to meet these requirements?

- A. Set default VLAN on the adapters.
- B. Increase Cos to 6.
- C. Disable VNTAG mode.
- D. Enable Uplink failover.

Answer: D

Explanation:

Enable Uplink Failover check box - Check this box if traffic on this vNIC should fail over to the secondary interface if there are communication problems. VNTAG mode is required for this option.

Failback timeout field - After a vNIC has started using its secondary interface, this setting controls how long the primary interface must be available before the system resumes using the primary interface for the vNIC. Enter a number of seconds between 0 and 600. VNTAG mode is required for this option.

https://www.cisco.com/en/US/docs/unified_computing/ucs/c/sw/gui/config/guide/1.5/b_Cisco_UCS_C-series_G

NEW QUESTION 202

What is a benefit of using Cisco Tetration?

- A. It collects telemetry data from servers and then uses software sensors to analyze flow information.
- B. It collects near-real time data from servers and inventories the software packages that exist on servers.
- C. It collects policy compliance data and process details.
- D. It collects enforcement data from servers and collects interpacket variation.

Answer: A

NEW QUESTION 207

Refer to the exhibit.

```
OTV-Site1# show otv
OTV Overlay Information
Site Identifier 0000.0000.0111
Overlay interface Overlay200
VPN name: Overlay200
VPN state: UP
Extended vlans: 178 2500-2563 (Total:65)
Join interface(s): Eth1/2 (20.1.1.1)
Site vlan: 1999 (up)
AED-Capable: Yes
Capability: Unicast-Only
Is Adjacency Server: Yes
Adjacency Server(s): 20.1.1.1/20.2.1.1
```

A network engineer is setting up a multihomed OTV network. The first site has been set up with a primary and secondary adjacency server. Which configuration must be added on the remote OTV AEDs site?

- A. interface Overlay200 otv join-interface Ethernet1/2 otv extend-vlan 178, 2500-2563 otv use-adjacency-server 20.1.1.1 unicast-only
- B. interface Overlay200 otv join-interface Ethernet1/2 otv extend-vlan 178, 2500-2563 otv adjacency-server unicast-only
- C. interface Overlay200 otv join-interface Ethernet1/2 otv extend-vlan 178, 2500-2563
- D. interface Overlay200 otv join-interface Ethernet1/2 otv extend-vlan 178, 2500-2563 otv use-adjacency-server 20.1.1.1 20.2.1.1 unicast-only

Answer: D

NEW QUESTION 209

Refer to the exhibit.

```
N7K-1
spanning-tree vlan 1-10 priority 8192

vpc domain 100
  role priority 100
  peer-keepalive destination 10.1.1.2 source 10.1.1.1
vrf default
  delay restore 60
  peer-switch
  auto-recovery
  ip arp synchronize

N7K-2
spanning-tree vlan 1-10 priority 8192

vpc domain 100
  role priority 200
  peer-keepalive destination 10.1.1.1 source 10.1.1.2
vrf default
  delay restore 60
  peer-switch
  auto-recovery
  ip arp synchronize
```

The STP priority of N7K-1 and N7K-2 are the lowest in the network. Which statement describes STP on the vPC?

- A. N7K-1 appears as the STP root.
- B. N7K-2 appears as the STP root.
- C. N7K-1 and N7K-2 appear as a single STP root.
- D. N7K-1 preempts N7K-2 as the STP root.

Answer: C

NEW QUESTION 210

An engineer requires a solution to automate the configuration and deployment of remote network devices for a customer. The engineer must keep these considerations in mind:

- The customer's environment is based on industry-accepted standards and requires a solution that meets these standards.
- The security requirements mandate the use of a secure transport mechanism between the automation software and target devices such as SSH or TLS.
- The solution must be based on a human-readable and easy to parse format such as XML or JSON. Which solution must be used to meet these requirements?

- A. SNMP
- B. REST API
- C. Ansible
- D. NETCONF

Answer: D

Explanation:

<https://www.cisco.com/c/en/us/products/collateral/ios-nx-os-software/ios-xe/nb-06-cisco-ios-xe-faq-en.html>

NEW QUESTION 215

The Cisco UCS blade chassis must send SNMPv3 traps to a network monitoring system. The SNMP trap messages should be authenticated and have protection from closure. Which SNMP security privileged level should be configured?

- A. noPriv
- B. auth
- C. noAuth
- D. priv

Answer: D

NEW QUESTION 216

An engineer requires the Cisco Fabric Services to distribute NTP configuration only to the members within the scope of a VSAN that belongs to a Cisco Unified Network. Which scope distribution must be selected to meet this requirement?

- A. Logical scope
- B. Physical scope
- C. Uncoordinated scope

D. Coordinated scope

Answer: A

NEW QUESTION 220

Refer to the exhibit.

```
restart pim
```

Which result of running the command is true?

- A. The PIM database is deleted.
- B. Multicast traffic forwarding is suspended.
- C. PIM join messages are suspended.
- D. MRIB is flushed

Answer: A

Explanation:

When you restart PIM, the following tasks are performed: The PIM database is deleted. The MRIB and MFIB are unaffected and forwarding of traffic continues. The multicast route ownership is verified through the MRIB. Periodic PIM join and prune messages from neighbors are used to repopulate the database.

https://www.cisco.com/c/en/us/td/docs/switches/datacenter/nexus9000/sw/6-x/multicast/configuration/guide/b_C

NEW QUESTION 224

An engineer is implementing a Cisco ACI fabric and must use static VLAN range as part of a VMM deployment. The static VLAN must be incorporated into the dynamic VLAN pool. The existing VLAN pool is set for dynamic allocation. Which action accomplishes this goal?

- A. Add the VLAN to the pool configured with Inherit Allocation Mode from parent.
- B. Change the existing VLAN pool to static allocation mode.
- C. Add a static VLAN allocation range to the VLAN pool.
- D. Create a static reservation within the dynamic VLAN pool.

Answer: C

NEW QUESTION 227

A network architect considers a Cisco HyperFlex design solution for a company. The proposed solution is for a virtual environment that is not performance-sensitive, but the solution must have high storage capacity and a low cost. Which Cisco HyperFlex storage configuration should be used?

- A. All-Flash
- B. Hybrid
- C. All-SAN
- D. All-NVMe

Answer: B

Explanation:

<https://www.cisco.com/c/en/us/products/collateral/hyperconverged-infrastructure/hyperflex-hx-series/white-pap> Hybrid contains HDD for capacity.

NEW QUESTION 231

Which statement about the impact of a rolling EPLD upgrade on a Cisco MDS 9000 Series Switch is true?

- A. All modules on the switch are disrupted.
- B. An EPLD upgrade is nondisruptive.
- C. Only the modules that are being upgraded are disrupted.
- D. The upgrade can be performed from the standby supervisor module.

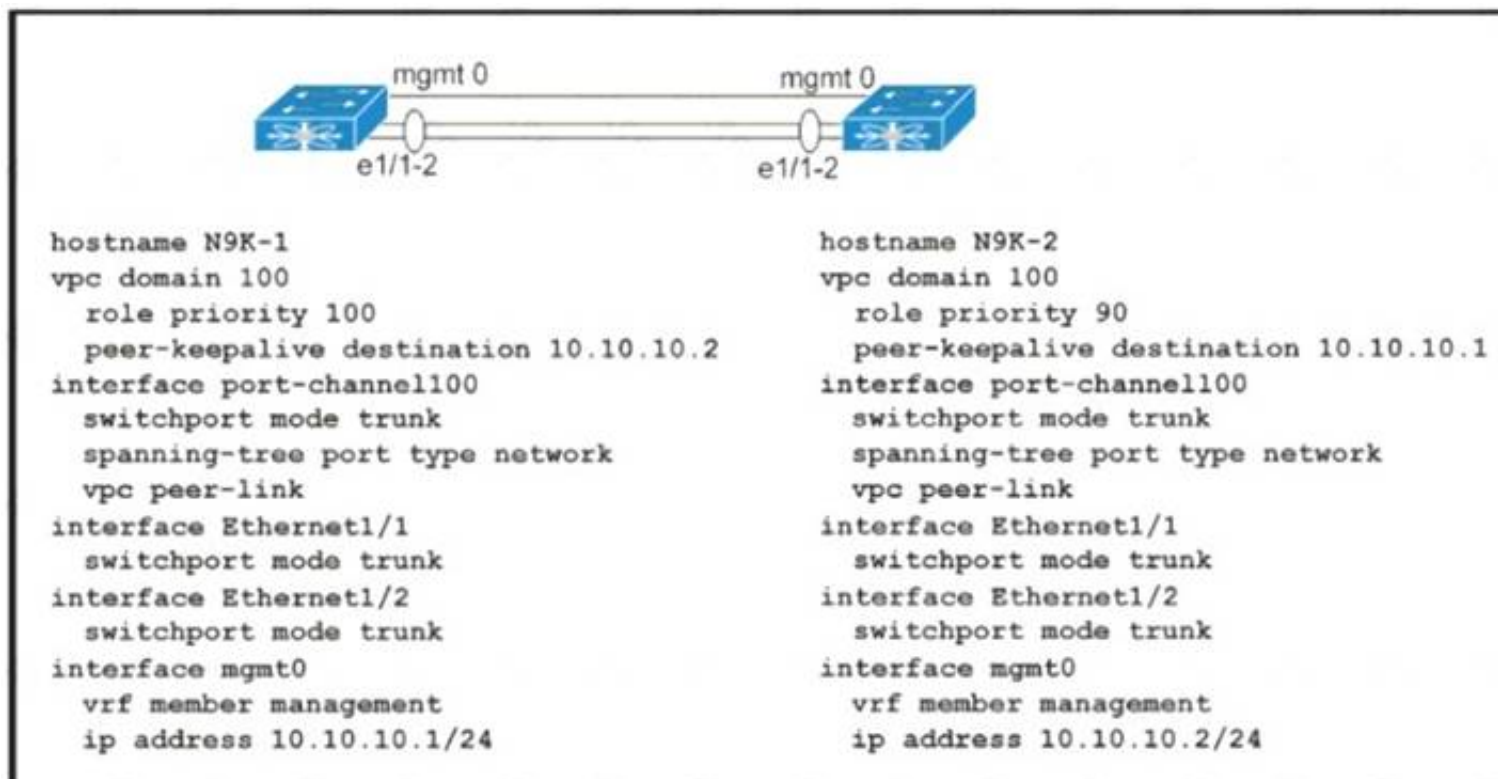
Answer: C

Explanation:

https://www.cisco.com/c/en/us/td/docs/switches/datacenter/mds9000/sw/6_2/release/notes/epld/epld_rn.html#pgfId-241919

NEW QUESTION 232

Refer to the exhibit.



Which action completes the vPC domain implementation?

- A. Allow VLANs on the vPC peer link member interfaces.
- B. Include the VRF management on the vPC domain.
- C. Configure the system MAC on the vPC domain.
- D. Add the vPC member ports to the vPC channel group.

Answer: D

NEW QUESTION 234

Which Cisco UCS Manager XML encoded backup type must be used to back up user names, roles, and service profiles?

- A. Full State Configuration
- B. Logical Configuration
- C. All Configuration
- D. System Configuration

Answer: C

NEW QUESTION 235

What is the impact of an EPLD upgrade on a Cisco MDS 9000 Series Switch?

- A. The active supervisor traffic is disrupted.
- B. The upgrade disrupts the management connectivity to the switch.
- C. The standby supervisor module reloads multiple times.
- D. The upgrade process disrupts only the module that is being upgraded.

Answer: D

NEW QUESTION 236

Refer to the exhibit.

```

; Router 1 configuration
interface loopback1
  ip address 10.10.32.121/30
  ip ospf network point-to-point
  ip router ospf 1 area 0.0.0.0
  ip pim sparse-mode

ip pim rp-address 10.10.32.122 group-list 225.0.0.0/8 bi-dir
  
```

In a bidirectional PIM network using Phantom RP as an RP redundancy mechanism, two Cisco NX-OS routers have these requirements:

- R1 must be the active RP.
- R2 must be the backup RP that is used only if R1 is not reachable

Drag and drop the configuration steps to complete the configuration for Router 2. Not all configuration steps are used.

```
; Router 2 configuration
interface loopback1
  ip address 
  ip ospf network 
  ip router ospf 1 area 0.0.0.0
  ip pim 
  ip pim rp-address group-list 225.0.0.0/8 bi-dir
```

10.10.32.121/32

10.10.32.121

point-to-point

broadcast

10.10.32.121/29

10.10.32.122

sparse-mode

dense-mode

- A. Mastered
B. Not Mastered

Answer: A

Explanation:

Graphical user interface, text, application Description automatically generated

Answer :

ip address 10.10.32.121/29

ip ospf network point-to-point

router ospf 1 area 0.0.0.0

ip pim sparse-mode

ip pim rp-address 10.10.32.122 group-list 255.0.0.0/8 bi-dir

NEW QUESTION 240

Which feature is supported with an In-Service Software Upgrade on a Cisco Nexus 9000 Series Switch?

- A. configuration changes during an upgrade
B. nondisruptive upgrades via nonstop forwarding
C. zero downtime downgrades via dual supervisor modules
D. upgrades to Individual modules and line cards

Answer: B

NEW QUESTION 244

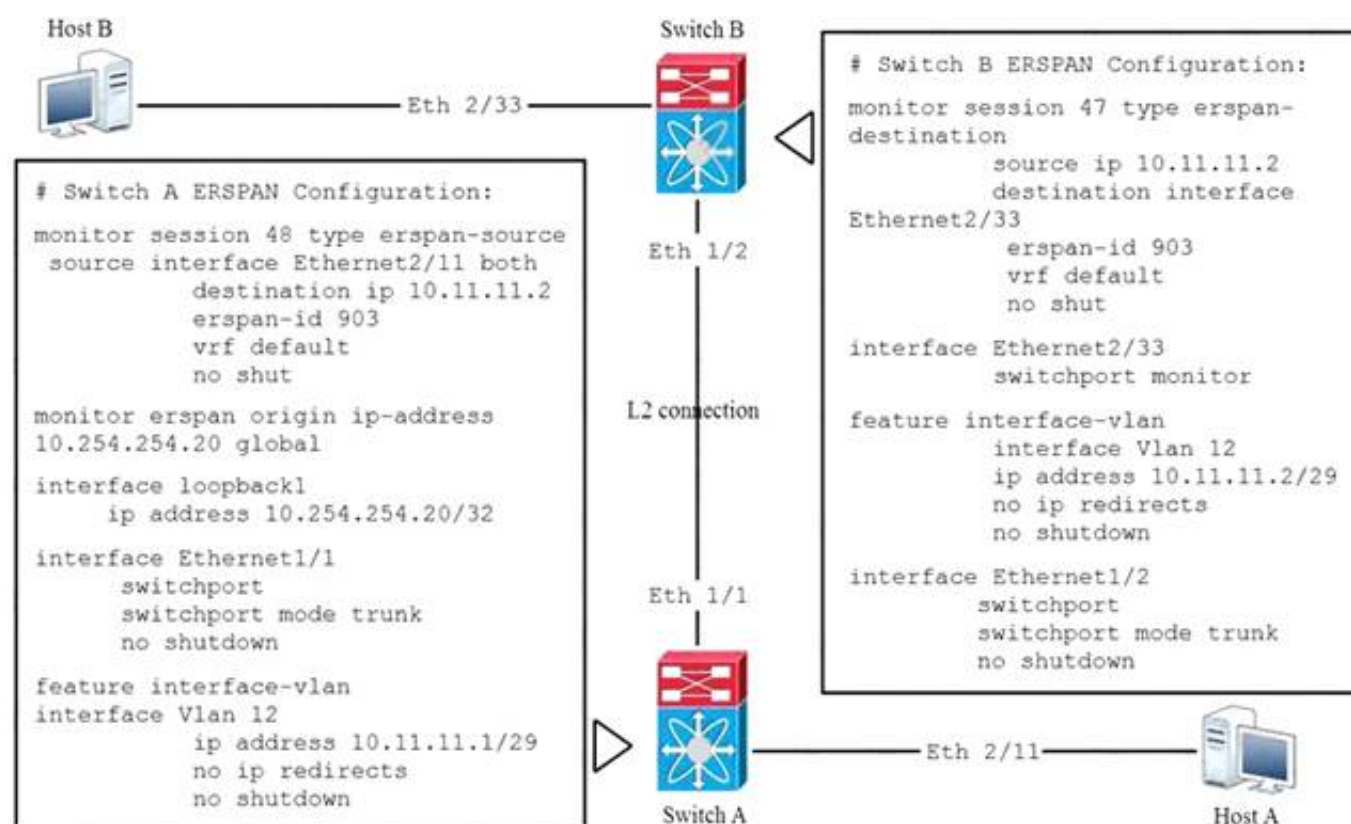
An engineer configures a role for a new user in Cisco UCS Manager The role should allow the user to configure vHBAs, vNICs, and server port types. Which role should be assigned to allow the engineer to complete this task?

- A. network administrator
B. operations
C. server-compute
D. AAA administrator

Answer: A

NEW QUESTION 248

Refer to the exhibit.



Which statement about the ERSPAN configuration in this environment is true.

- A. Host A is the source of ERSPAN spanned traffic and host B is the traffic analyzer.
- B. Host B is the source of ERSPAN spanned traffic and host A is the traffic analyzer.
- C. The session number of the source of ERSPAN spanned traffic must have a session ID of 48 for the traffic analyzer to receive the traffic.
- D. The session number of the source of ERSPAN spanned traffic must have a session ID of 47 for the traffic analyzer to receive the traffic.

Answer: A

NEW QUESTION 252

An engineer must implement private VLANs for a group of Cisco UCS 8-Series servers. The primary VLAN is present, But the secondary VLAN must Be added to Both fabrics. Which configuration set accomplishes this task?

- ☒ UCS-A# scope eth-uplink
UCS-A /eth-uplink # create vlan vlan1981 1981
UCS-A /eth-uplink/vlan* # set sharing none
- ☐ UCS-A# scope eth-uplink
UCS-A /eth-uplink # create vlan vlan1981 1981
UCS-A /eth-uplink/vlan* # set sharing isolated
- ☐ UCS-A# scope eth-uplink
UCS-A /eth-uplink # scope fabric a
UCS-A /eth-uplink/fabric # create vlan vlan1981 1981
UCS-A /eth-uplink/fabric/vlan* # set sharing private
- ☐ UCS-A# scope eth-uplink
UCS-A /eth-uplink # scope fabric a
UCS-A /eth-uplink/fabric # create vlan vlan1981 1981
UCS-A /eth-uplink/fabric/vlan* # set sharing secondary

- A. Option A
- B. Option B
- C. Option C
- D. Option D

Answer: B

NEW QUESTION 254

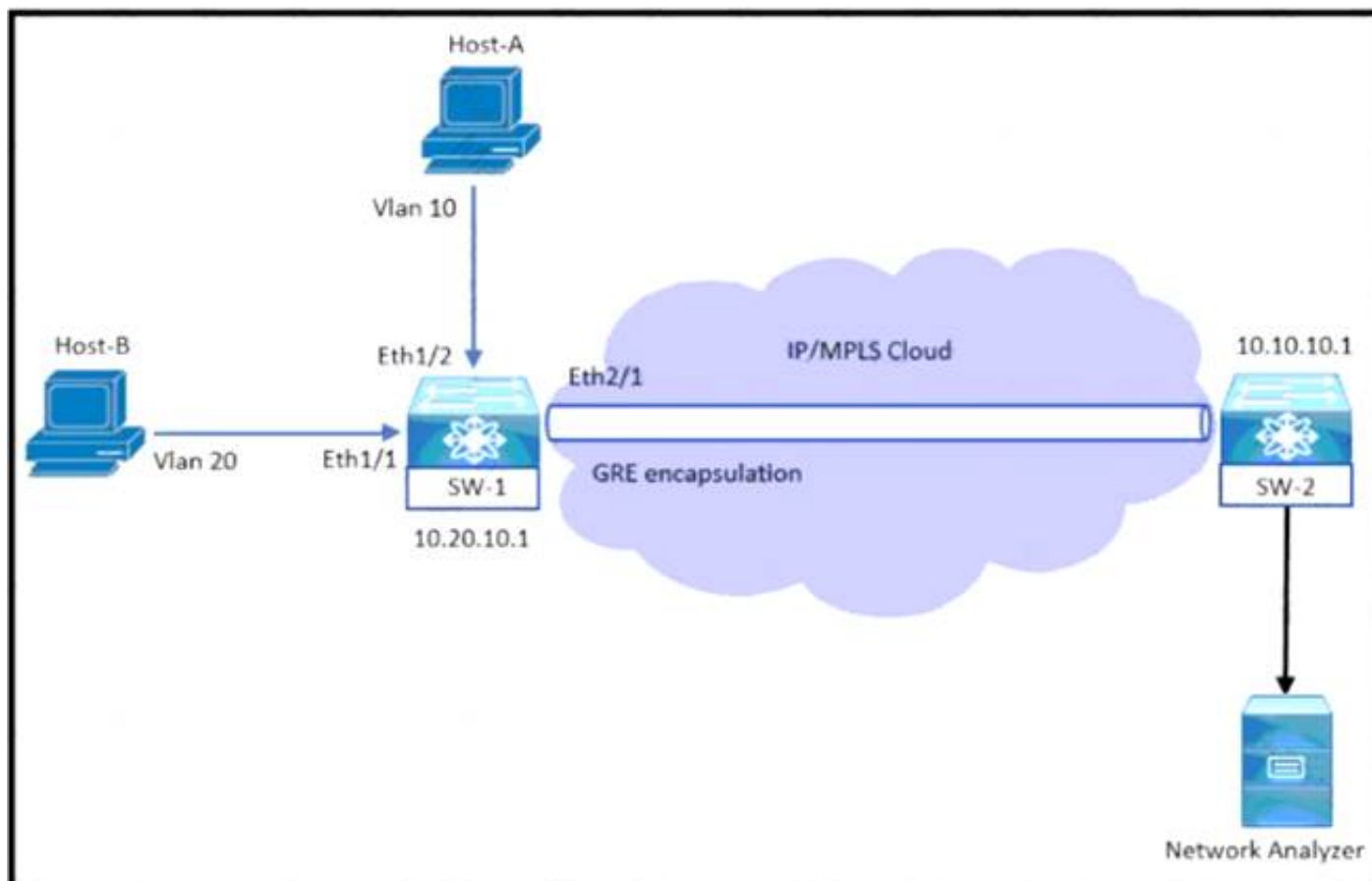
A network engineer must migrate a Cisco WSA virtual appliance from one physical host to another physical host by using VMware vMotion. What is a requirement for both physical hosts?

- A. The hosts must run Cisco AsyncOS 10.0 or greater.
- B. The hosts must have access to the same defined network.
- C. The hosts must run different versions of Cisco AsyncOS.
- D. The hosts must use a different datastore than the virtual appliance

Answer: B

NEW QUESTION 257

Refer to the exhibit.



An engineer monitors ingress traffic from Host-A and all traffic for VLAN 20 from Host-B Which configuration must be implemented to monitor and export traffic to Network Analyzer?

- ☐ SW-1(config)# monitor session 5
SW-1(config-monitor)# source interface ethernet 1/2 rx
SW-1(config-monitor)# source interface ethernet 1/1 tx
SW-1(config-monitor)# source vlan 20 both
SW-1(config-monitor)# destination ip 10.10.10.1
SW-1(config-monitor)# no shut
- ☐ SW-1(config)# monitor session 5 type erspan-source
SW-1(config-erspan-src)# source interface ethernet 1/2 rx
SW-1(config-erspan-src)# source vlan 20 both
SW-1(config-erspan-src)# destination ip 10.10.10.1
SW-1(config-erspan-src)# erspan-id 111
SW-1(config-erspan-src)# no shut
- ☐ SW-1(config)# monitor session 5 type erspan
SW-1(config-erspan-src)# source interface ethernet 1/2 rx
SW-1(config-erspan-src)# source interface ethernet 1/1 both
SW-1(config-erspan-src)# destination ip 10.10.10.1
SW-1(config-erspan-src)# mtu 1000
SW-1(config-erspan-src)# no shut
- ☐ SW-1(config)# monitor session 5
SW-1(config-monitor)# source interface ethernet 1/2 rx
SW-1(config-monitor)# source interface ethernet 1/1 both
SW-1(config-monitor)# source vlan 20 both
SW-1(config-monitor)# destination interface ethernet 2/1
SW-1(config-monitor)# no shut

- A. Option A
- B. Option B
- C. Option C
- D. Option D

Answer: B

NEW QUESTION 262

An engineer is implementing the Cisco ACI fabric and must create two different vPCs from leaf switches A and B. The vPCs are deployed as follows:

- vPC 1 encompasses ports Eth 1 /1 on leaf A and B and connects to server 1.
- vPC 2 encompasses port Eth1/2 on leaf A and B and connects to server 2.

A leaf switch profile listing leaves A and B is already configured Which ACI object must be created to meet these requirements?

- A. two vPC interface policy groups
- B. one access port interface policy group
- C. two PortChannel interface policy groups
- D. one vPC interface policy group

Answer: A

NEW QUESTION 267

An engineer must perform a nondisruptive software upgrade on a dual supervisor Cisco Nexus 7000 series switch. What is the cause of the upgrade being disruptive?

- A. The show install all impact command is not issued before the upgrade

- B. The kickstart image is installed by using the Install all kickstart image system image command
- C. Attempt to simultaneously upgrade more than three cards
- D. Change to the configuration settings or the network connections during the upgrade process

Answer: D

NEW QUESTION 269

An engineer must implement the FCoE on the Cisco Nexus 9000 Series Switch-based infrastructure. The deployment will contain dual-homed fabric extenders and must support jumbo frames with port channels. Which two sets of actions complete the configuration? (Choose two.)

- ☒ Configure the interface with mtu 9516.
Disable the feature NPIV.
- ☒ Create a virtual Fibre Channel interface.
Bind vFC to physical interface.
- ☐ Create a FCoE switch profile.
Enable config sync.
- ☐ Create a dedicated VSAN for FEX.
Bind VSAN to FEX uplinks.
- ☐ Execute fcoe enable-fex.
Configure FEX uplinks with mtu 9216.

- A. Option A
- B. Option B
- C. Option C
- D. Option D
- E. Option E

Answer: BE

NEW QUESTION 270

Which virtualization feature is provided by network-attached storage?

- A. ALUA path redirection
- B. hypervisor host boot LUN
- C. VM cluster shared disk
- D. raw device passthrough

Answer: C

NEW QUESTION 275

An engineer must configure the HSRP protocol between two Cisco Nexus 9000 Series Switches This configuration is present on Nexus A.

```
! Nexus A
key chain NHRP-KEYS
key 1010
  key-string 7 072a43795c1d0c4050883003163b3e2121a720361a021e11
  accept-lifetime 00:00:00 Jan 01 2021 23:59:59 Aug 31 2021
  send-lifetime 00:00:00 Jan 01 2021 23:59:59 Jul 31 2021
key 1020
  key-string 7 086f43cd5c150c1702630203163b3e2221a520261a011a12
  accept-lifetime 00:00:00 Jul 01 2021 23:59:59 Dec 31 2021
  send-lifetime 00:00:00 Jul 01 2021 23:59:59 Dec 31 2021
interface ethernet 1/1
ip 209.165.200.226/27
hsrp 200
  priority 201
ip 209.165.200.225
-- missing output --
no shutdown
```

The final HSRP configuration must meet these requirements

- The HSRP communication must be secured on both switches
- Both switches must support more than 300 groups

Which two commands must be added to the HSRP configuration on Nexus A to complete these requirements? (Choose two)

- A. hsrp version 1
- B. hsrp version 2
- C. authentication text 1020
- D. authenticate md5 key-chain NHRP-KEYS
- E. authentication text 1010

Answer: BD

NEW QUESTION 280

A Cisco UCS user called "Employee1" accidentally changed the boot policy of the Cisco UCS server at the Cisco UCS Manager root level. This change impacted all service profiles, and their storage connectivity was lost. The system administrator wants to prevent this issue from recurring in the future. The new security policy mandates that access must be restricted up to the organization level and prevent other users from modifying root policies. Which action must be taken to meet these requirements?

- A. Modify the privilege level assigned to the user
- B. Assign users to a specific Cisco UCS locale
- C. Assign the user "Employee1" the network-operator role
- D. Define a custom user role and assign it to users

Answer: B

Explanation:

[https://www.cisco.com/c/en/us/td/docs/unified_computing/ucs/ucs-manager/GUI-User-Guides/Admin-Managem User Locales](https://www.cisco.com/c/en/us/td/docs/unified_computing/ucs/ucs-manager/GUI-User-Guides/Admin-Managem%20User%20Locales) You can assign a user to one or more locales. Each locale defines one or more organizations (domains) to which a user can access. Access is usually limited to the organizations specified in the locale.

https://www.cisco.com/c/en/us/td/docs/unified_computing/ucs/ucs-manager/GUI-User-Guides/Admin-Management/4-1/b_Cisco_UCS_Admin_Mgmt_Guide_4-1/m_rolebased_access_control_configuration.html#d18994e1993a1635

NEW QUESTION 281

What are two types of FC/FCoE oversubscription ratios? (Choose two.)

- A. server storage to end-node count
- B. port bandwidth to uplink bandwidth
- C. edge ISL bandwidth to core ISL bandwidth
- D. host bandwidth to storage bandwidth
- E. switch processing power to end-node processing power

Answer: CD

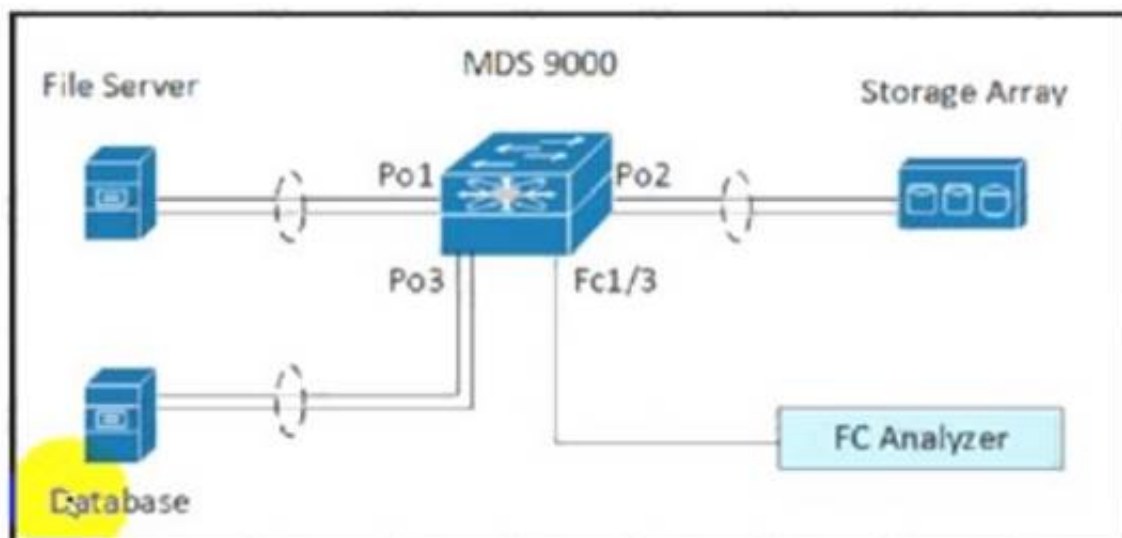
Explanation:

<https://www.ciscolive.com/c/dam/r/ciscolive/us/docs/2017/pdf/BRKDCN-1121.pdf>

https://www.cisco.com/c/en/us/td/docs/switches/datacenter/nexus5000/sw/operations/n5k_fcoe_ops.html

NEW QUESTION 285

Refer to the exhibit.



```

interface port-channel 1
  channel mode active
interface port-channel 2
  channel mode active
interface fcl/1-2
  channel-group 1
  no shutdown
interface fcl/4-5
  channel-group 2
  no shutdown
interface fcl/7-8
  channel-group 3
  no shutdown
vsan database
  vsan 100 name fabric1
  vsan 100 interface port-channel 1
  vsan 100 interface port-channel 2
  vsan 100 interface port-channel 3
  
```

A storage engineer must monitor the traffic from the file server to the FC analyzer. The file server and the database use the same storage array. Which configuration must be applied to the Cisco MDS 9000 Series Switch to accomplish this goal?

- ☐ MDS-9000(config)# span session 1
MDS-9000(config-span)# destination interface fc1/3
MDS-9000(config-span)# source interface port-channel 1
- ☐ MDS-9000(config)# span session 1
MDS-9000(config-span)# destination interface port-channel 2
MDS-9000(config-span)# source interface vsan 100
- ☐ MDS-9000(config)# span session 1
MDS-9000(config-span)# destination interface port-channel 2
MDS-9000(config-span)# source interface fc1/1
- ☐ MDS-9000(config)# span session 1
MDS-9000(config-span)# destination interface vsan 100
MDS-9000(config-span)# source interface port-channel 1

- A. Option A
- B. Option B
- C. Option C
- D. Option D

Answer: B

NEW QUESTION 287

The VMM domain is integrated between Cisco APICs and vCenter using a distributed vSwitch. The traffic must be blocked between a subset of endpoints in an EPG based on specific VM attributes and the rest of the VMs in that EPG. Which set of actions blocks this traffic?

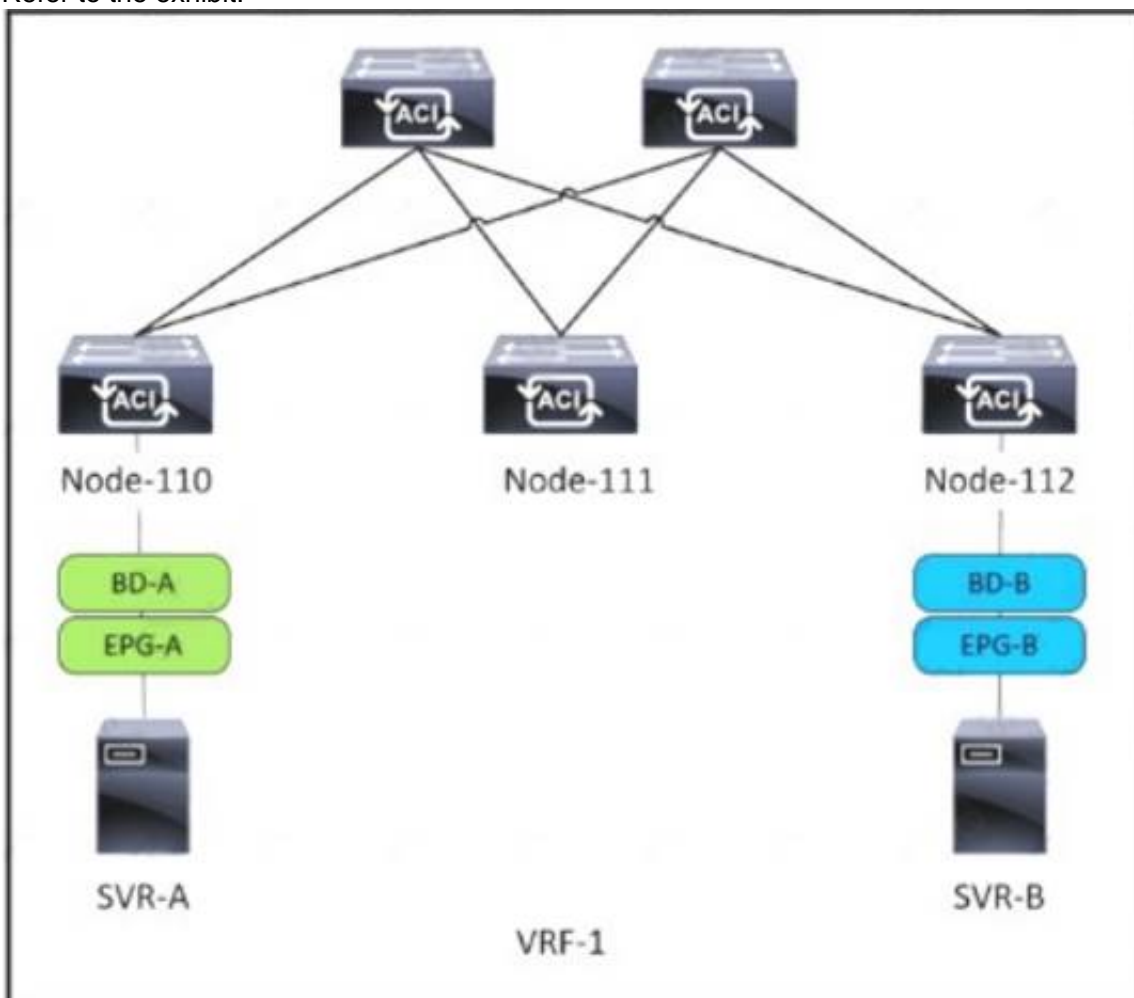
- ☐ 1. Set Allow Microsegmentation under the EPG VMM Domain Association to "True"
2. Set Intra-EPG Isolation to "Enforced" for the EPG
3. Set Intra-EPG Isolation to "Enforced" for the uSeg EPG
- ☐ 1. Set Allow Microsegmentation under the EPG VMM Domain Association to "True"
2. Set Intra-EPG Isolation to "Unenforced" for the EPG
3. Set Intra-EPG Isolation to "Unenforced" for the uSeg EPG
- ☐ 1. Set Allow Microsegmentation under the EPG VMM Domain Association to "False"
2. Set Intra-EPG Isolation to "Unenforced" for the EPG
3. Set Intra-EPG Isolation to "Enforced" for the uSeg EPG
- ☒ 1. Set Allow Microsegmentation under the EPG VMM Domain Association to "True"
2. Set Intra-EPG Isolation to "Enforced" for the EPG
3. Set Intra-EPG Isolation to "Unenforced" for the uSeg EPG

- A. Option A
- B. Option B
- C. Option C
- D. Option D

Answer: A

NEW QUESTION 290

Refer to the exhibit.



SVR-A in EPG-A/BD-A fails to reach SVR-B in EPG-B/BD-B. Which two conditions should be verified to analyze the traffic between the two EPGs? (Choose two.)

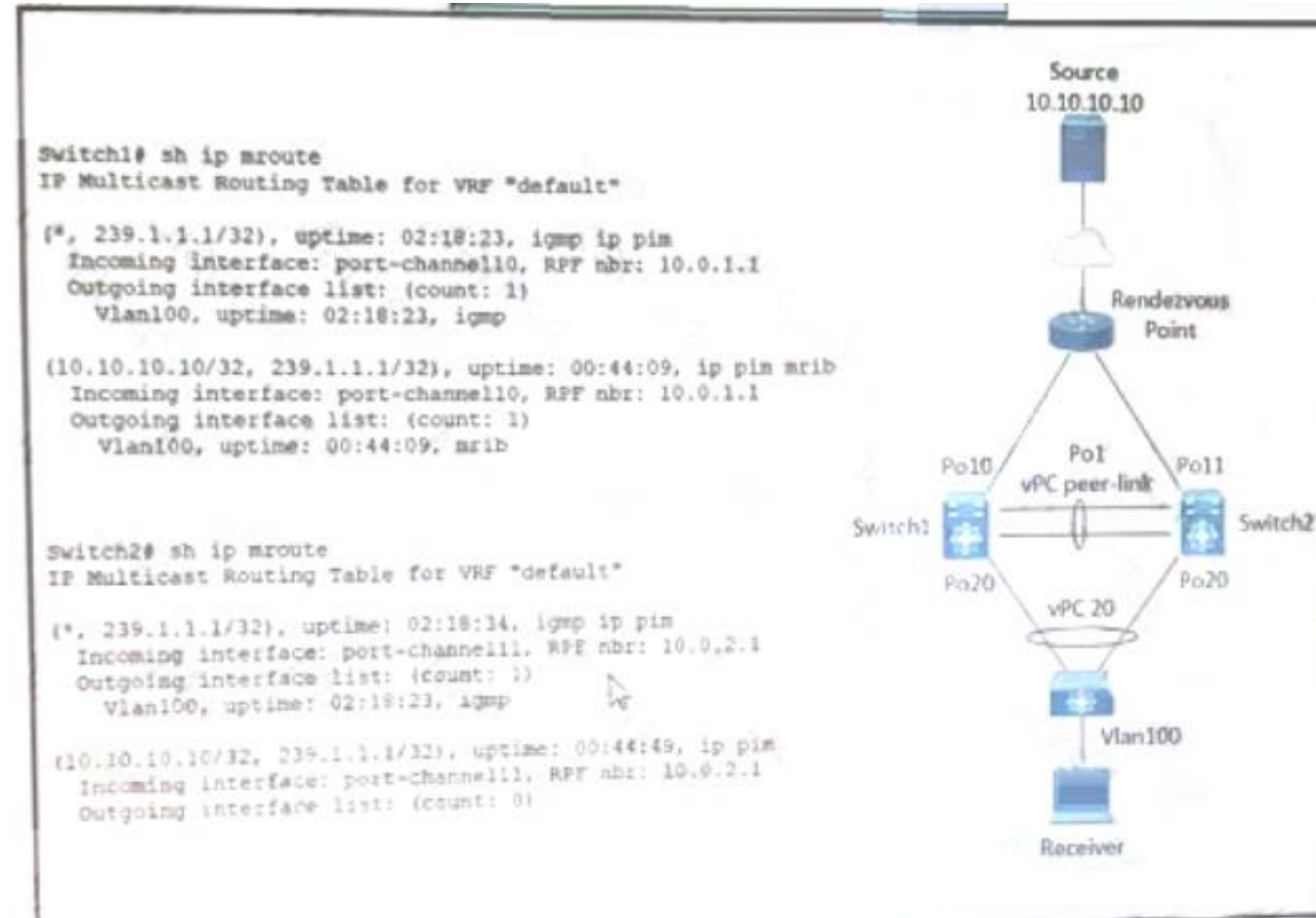
- A. A contract exists between EPG-A and EPG-B and allows the traffic.
- B. Limit Endpoint Learning is disabled on the bridge domain for EPG-B.
- C. SVR-B is learned as an endpoint in EPG-B from Node-112.
- D. EPG-A and EPG-B are excluded from the preferred group.

E. The bridge domain for EPG-B floods ARP packets.

Answer: AC

NEW QUESTION 292

Refer to the exhibit.



A host with source address 10.10.10.10. sends traffic to multicast group 239.1.1.1. how do the vPC switches forward the multicast traffic?

- A. If multicast traffic is received on Po11 Switch2, the traffic is forwarded out only one Po20.
- B. If multicast traffic is received on Po10 Switch1, the traffic is forwarded out on Po1 and Po20.
- C. If multicast traffic is received on Po11 and Switch2, the traffic is dropped.
- D. If multicast traffic is received on Switch over the vPC peer-link, the traffic is dropped.

Answer: C

Explanation:

<https://www.cisco.com/c/en/us/support/docs/ip/multicast/214140-multicast-forwarding-in-vpc-based-on-loc.htm>

NEW QUESTION 293

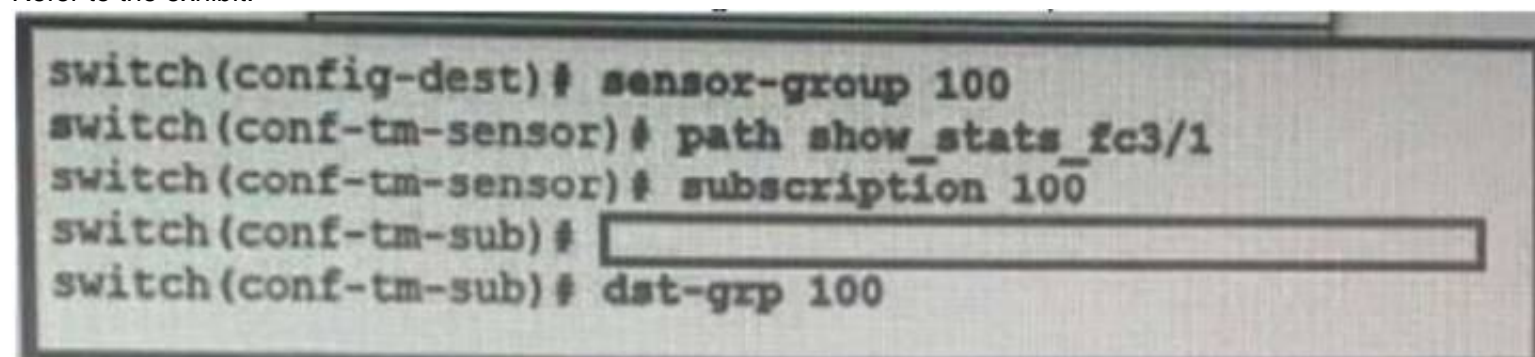
Which MAC address is an HSRP version 2?

- A. 0100.5E7F.FFFF
- B. 3799.9943.3000
- C. 0000.0C9F.F0C8
- D. 0000.0C07.AC1H

Answer: C

NEW QUESTION 296

Refer to the exhibit.



An engineer needs to implement streaming telemetry on a cisco MDS 9000 series switch. The requirement is for the show command data to be collected every 30 seconds and sent to receivers. Which command must be added to the configuration meet this requirement?

- A. Sensor-grp 200 sample-period 30000
- B. Snsr-grp 200 sample-interval 30
- C. Sensor-grp 200 sample-period 30
- D. Snsr-grp 200 sample-interval 30000

Answer: D

Explanation:

snr-grp <id> sample-interval <interval> Currently, sensor group ID supports only numeric ID values. Specify the streaming sample interval value; the value must

be in milliseconds. The minimum streaming sample interval that is supported is 30000 milliseconds.
https://www.cisco.com/c/en/us/td/docs/switches/datacenter/mds9000/sw/8_x/config/san_analytics/cisco-mds9000

NEW QUESTION 300

Refer to the exhibit.

```
rollback running-config checkpoint system-fm-vpc output-omitted
```

A network engineer is implementing a configuration checkpoint on a Cisco Nexus 9000 Series Switch. The configuration must skip any existing vPC configuration errors and must complete if there are any configuration errors. The engineer finished the vPC domain configuration part. Which command completes the checkpoint implementation?

- A. stop-at-first-failure
- B. atomic
- C. best-effort
- D. verbose

Answer: C

NEW QUESTION 305

An engineer must recover the Cisco UCS system. The full backup is available on a backup SCP server. Which set of actions recovers the configuration of the Cisco UCS Manager?

- ☐ Copy the backup file to a USB drive.
Copy the running-config.
- ☐ Create a scheduled restore job.
Reboot the UCS Manager.
- ☒ Create an import-config task.
Set the action to Replace.
- ☐ Factory reset the fabric interconnect.
Select the Restore feature.

- A. Option A
- B. Option B
- C. Option C
- D. Option D

Answer: C

NEW QUESTION 310

A new user with access privileges in the Finance department moves to a new Admin department. The user must have access privileges to the Admin department data and applications inside the Cisco UCS Manager. Which set of changes must be implemented in Cisco UCS Central for the user to acquire the privileges?

- A. Create an Admin user account and remove the authentication service for the Finance privileges.
- B. Disable the Finance user account and add the authentication service for the Admin privileges.
- C. Create a new locale Admin and add the Admin department to the Admin local.
- D. Delete the old locale.
- E. Finance and remove the Finance department from the Finance locale.

Answer: C

NEW QUESTION 315

An engineer must configure remote authentication on a Cisco UCS system. The user password must be encrypted before it is sent to the authentication server. The company security policy requires the server to be based on an open standard. Drag and drop the UCS CLI AAA configuration commands from the left into the order in which they must be implemented on the right. Not all commands are used.

commit-buffer	step 1
create server <ip address>	step 2
set key	step 3
scope radius	step 4
scope tacacs+	step 5
scope security	

- A. Mastered
- B. Not Mastered

Answer: A

Explanation:

UCS-A# scope security
UCS-A /security # scope radius
UCS-A /security/radius # create server radiusserv7
UCS-A /security/radius/server* # set key
UCS-A /security/radius/server* # commit-buffer

NEW QUESTION 319

Which two settings must be configured before enabling a Cisco UCS Manager domain for Cisco Intersight connectivity? (Choose two.)

- A. syslog redirection
- B. DNS servers
- C. SMTP servers
- D. NTP servers
- E. SMTP reply-to-address

Answer: BD

Explanation:

https://www.cisco.com/c/en/us/td/docs/unified_computing/ucs/ucs-manager/GUI-User-Guides/Admin-Management/4-1/b_Cisco_UCS_Admin_Mgmt_Guide_4-1/m_gui_cisco_intergight_management.html

NEW QUESTION 321

Which two statements about the process of performing an EPLD upgrade on a Cisco MDS 9000 series Switch are true? (Choose two.)

- A. If an upgrade is interrupted, the upgrade continues after a connection is restored.
- B. The upgrade can be performed from the standby supervisor module.
- C. The active supervisor can be upgraded.
- D. Modules must be online to be upgraded.
- E. The Upgrade process disrupts only the module that is being upgraded.

Answer: DE

Explanation:

https://www.cisco.com/c/en/us/td/docs/switches/datacenter/mds9000/sw/8_x/release_notes/epld/epld_rn_8x.htm Graphical user interface, text, application, email Description automatically generated

"On a Cisco Nexus 9500 platform switch that has two supervisor modules, upgrade the EPLDs for the standby supervisor and then switch the active supervisor to the standby mode to upgrade its EPLDs. The supervisor switchover is not disruptive to traffic on Cisco Nexus 9500 platform switches. On a switch that has only one supervisor module, you can upgrade the active supervisor, but this will disrupt its operations during the upgrade."

Guidelines and Limitations

When you upgrade or downgrade the EPLDs, observe the following guidelines and limitations:

- You can upgrade each module only when it is online. The EPLD upgrade is only disruptive to the module being upgraded.
- If you interrupt an EPLD upgrade or downgrade, the module must be upgraded again.
- In Cisco MDS 9000 Director Switches, EPLD upgrade or downgrade can only be executed from the active supervisor module. To upgrade the supervisor EPLDs nondisruptively, upgrade the standby supervisor and then switchover. After the new standby supervisor is online its EPLDs can be upgraded.
- In Cisco MDS 9000 Series Fabric Switches, be sure to specify 1 as the module number. The switch must be power cycled for the EPLDs to start running the new code.

Under Installation guidelines. https://www.cisco.com/c/en/us/td/docs/switches/datacenter/nexus9000/sw/92x/epld-rn/nxos_n9K_epldRN_924.html

NEW QUESTION 323

Refer to the exhibit.

```
switch# show install all impact epld n9000-epld.9.2.1.img
Compatibility check:
Module          Type          Upgradable          Impact          Reason
-----
1              SUP              YES              disruptive      Module Upgradable

Retrieving EPLD versions... Please wait.

Images will be upgraded according to following table:
Module  Type  EPLD          Running-Version  New-Version  Upg-Required
-----
1      SUP  MI FPGA          0x23            0x23        No
1      SUP  IO FPGA          0x06            0x06        No
1      SUP  MI FPGA2         0x23            0x23        No
```


A network engineer plans to upgrade the current software images of a Cisco Nexus switch. What is the impact of starting the EPLD upgrade?

- A. The switch reboots one time for the new EPLD versions to take effect.
- B. The switch reboots multiple times for the new EPLD versions to take effect.
- C. The switch skips the EPLD upgrade for each EPLD device of the switch.
- D. The switch skips the EPLD upgrade for MIFPGA and proceeds with the other EPLD devices.

Answer: C

Explanation:

https://www.cisco.com/c/en/us/td/docs/switches/datacenter/nexus9000/sw/92x/epld-rn/nxos_n9K_epldRN_924.

NEW QUESTION 325

A network administrator must automate the process of pinging all the IP addresses from the 10.0.0.0/8 subnet. The subnet is already present in the ARP table of the Cisco Nexus switch. Drag and drop the bash commands to generate the desired output. Not all commands are used.

```
bash-4.3$ [ ] | grep "^10\." - | [ ] | [ ]
--- 10.1.0.2 ping statistics ---
5 packets transmitted, 5 packets received, 0.00% packet loss
--- 10.1.0.77 ping statistics ---
5 packets transmitted, 0 packets received, 100.00% packet loss
```

awk '{print "ping " \$1}'

egrep "statistics|loss"

grep -v "statistics|loss"

sed -e 's/ping /10./g'

show ip arp

vsh

vsh -c "show ip arp"

- A. Mastered
- B. Not Mastered

Answer: A

Explanation:

vsh -c "show ip arp", awk '{print "ping" \$1}', vsh, egrep "statistics|loss"

NEW QUESTION 328

A network architect wants to propose a scalable network monitoring solution in which data is repeatedly acquired from network devices. The solution must use a push model and provide close to realtime access to operational data. Which technology must be used to meet these requirements?

- A. streaming telemetry
- B. logging
- C. SNMPv3
- D. CLI-based scripting

Answer: A

Explanation:

<https://blogs.cisco.com/developer/its-time-to-move-away-from-snmp-and-cli-and-use-model-driven-telemetry>

Why Model-Driven Telemetry?

Model-Driven Telemetry is a new approach for network monitoring in which data is streamed from network devices continuously using a push model and provides near real-time access to operational statistics. You can precisely define what data you want to subscribe to using standard YANG models (YANG is a data modeling language used to model configuration and state data manipulated by the NETCONF protocol) with no CLI required. It allows network devices to continuously stream real time configuration and operating state information to subscribers. Structured data is published at a defined cadence, or on-change, based upon the subscription criteria and data type.

NEW QUESTION 333

Refer to the exhibit.

The screenshot shows the 'Create Backup Operation' window in the Cisco UCS Manager. The 'Admin State' is set to 'Enabled'. Under the 'Type' section, there are four radio button options: 'Full State', 'All Configuration', 'System Configuration', and 'Logical Configuration'. The 'Preserve Identities' checkbox is currently unchecked.

Which backup operation type does not include the Preserve Identities feature?

- A. logical configuration
- B. system configuration
- C. full state
- D. all configuration

Answer: C

Explanation:

This checkbox remains selected for All Configuration and System Configuration. Full State backup does not have Preserver Identity feature.

All configs, logical and system backups seem to allow "preserve identities":

<https://books.google.pt/books?id=5VXUDwAAQBAJ&pg=PT699&lpg=PT699&dq=Preserve+Identities+feature+backup+ucs&source=bl&ots=daWxti4DV&sig=ACfU3U3X8UIPtS8EewzRIqTxqpyNVqOaNQ&hl=es419&sa=X&ved=2ahUKEwiYhtaxyMDqAhXFzIUkHXI8CzoQ6AEwC3oECAoQAQ#v=onepage&q=Preserve%20Identities%20feature%20backup%20ucs&f=false>

NEW QUESTION 334

Which two configuration settings are available in the in the cisco UCS flmware Auto sync server policy?

- A. User Notification
- B. User Acknowledge
- C. No Action
- D. Delayed Action
- E. Immediate Action

Answer: BC

Explanation:

https://www.cisco.com/c/en/us/td/docs/unified_computing/ucs/sw/firmware-mgmt/gui/2-2/b_GUI_Firmware_M Following are the values for the Firmware Auto Sync Server policy: • User Acknowledge—Firmware on the server is not synchronized until the administrator acknowledges the upgrade in the Pending Activities dialog box. • No Action—No firmware upgrade is initiated on the server.

NEW QUESTION 338

Refer to the exhibit. A network engineer must configure an authentication solution for Cisco UCS with these conditions:

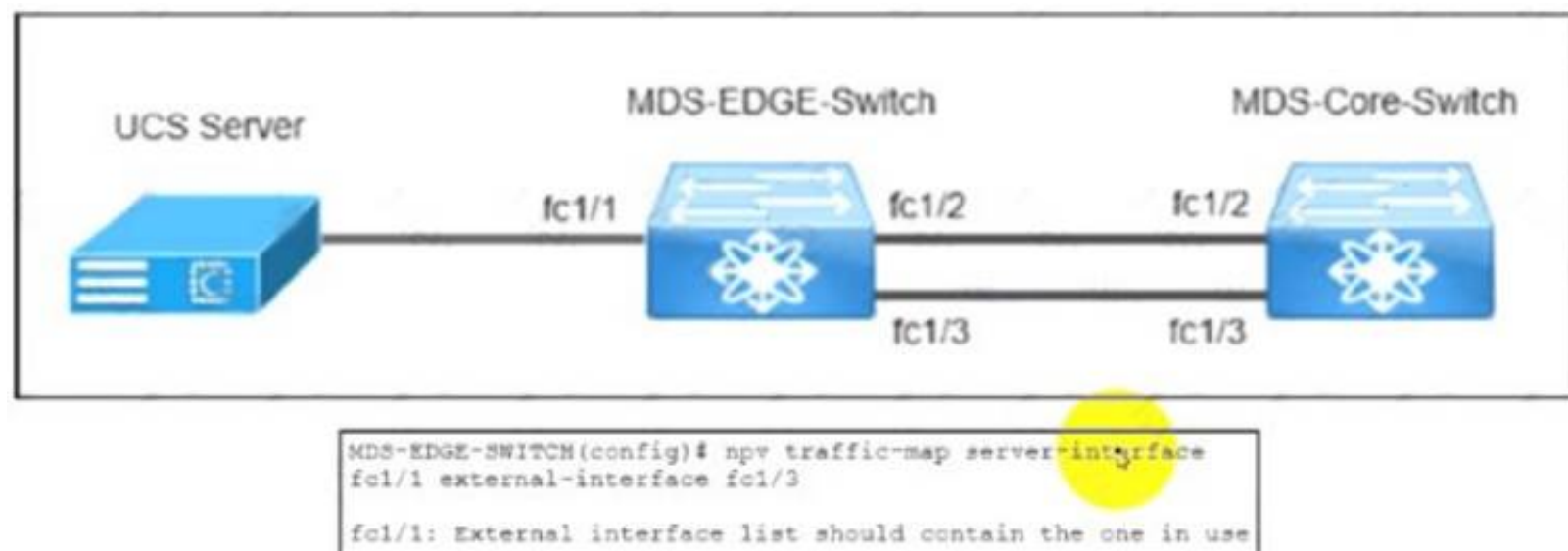
- Two-factor authentication must be enabled for all UCS user authentication.
- All AAA packets must be encrypted and use TCP port 49 to establish communication. Which set of actions needs these requirements?

- A. Create the LDAP provider.Change the LDAP group rule in an LDAP provider.
- B. Create the RADIUS group mapping.Change the RADIUS group rule in a RADIUS provider.
- C. Remove the LDAP provider.Create a TACACS+ provider in user management.
- D. Delete the LDAP group mapping.Create a RADIUS provider in user management.

Answer: C

NEW QUESTION 339

Refer to the exhibit.



The MDS-EDGE-Switch and MDS-Core-Switch are configured with NPV and NPIV features The FLOGI from Cisco UCS is received by the MDS-Core-Switch on interface fc1/2. An engineer tried to move all traffic between the MDS-EDGE-Switch and MOS-Core-Switch from interface fc 1/2 to fc1/3, but the attempt failed. Which set of actions completes the configuration?

- ☐ Disable the NPV feature in the MDS-EDGE-Switch.
Re-enable the NPV feature.
Disable interface fc1/1.
- ☐ Disable the NPIV feature in the MDS-EDGE-Switch.
Re-enable the NPIV feature.
Disable interface fc1/3.
- ☐ Shut down fc1/1 in the MDS-EDGE-Switch.
Re-apply the command.
Enable interface fc1/1.
- ☐ Shutdown fc1/3 in the MDS-EDGE-Switch.
Re-apply the command.
Enable interface fc1/3.

- A. Option A
- B. Option B

- C. Option C
D. Option D

Answer: C

NEW QUESTION 340

Which server policy is used to install new Cisco IMC software on a server?

- A. host firmware policy
B. hypervisor firmware policy
C. BIOS software policy
D. Cisco IMC software policy

Answer: A

Explanation:

[https://www.cisco.com/c/en/us/td/docs/unified_computing/ucs/ucs-manager/CLI-User-Guides/Firmware-Mgmt/4-0/b_UCSM_CLI_Firmware_Management_Guide_4-0/ b_UCSM_CLI_Firmware_Management_Guide_4-0_chapter_01.html#](https://www.cisco.com/c/en/us/td/docs/unified_computing/ucs/ucs-manager/CLI-User-Guides/Firmware-Mgmt/4-0/b_UCSM_CLI_Firmware_Management_Guide_4-0/b_UCSM_CLI_Firmware_Management_Guide_4-0_chapter_01.html#)

You can use host firmware packages by defining a host firmware policy as an attribute of a service profile template, which is an updating template. Any change made to the service profile template is automatically made to its instantiated service profiles. Subsequently, the servers associated with the service profiles are also upgraded in parallel with the firmware version.

Graphical user interface, text, application Description automatically generated

The Cisco UCS domains are categorized into domain groups in Cisco UCS Central for management purposes. You can manage firmware for each domain group separately at the domain group level or for all domain groups from the domain group root. Cisco UCS Central provides you the option to manage the following Cisco UCS domain firmware packages:

- **Capability Catalog**— One capability catalog per domain group. All Cisco UCS domains registered to a particular domain group will use the capability catalog defined in the domain group.
- **Infrastructure Firmware**— One infrastructure firmware policy per domain group . All Cisco UCS domains registered to a particular domain group will use the same Infrastructure firmware version defined in the domain group.
- **Host Firmware**— You can have more than one **host firmware policy** for the different host firmware components in a domain group. The Cisco UCS domains registered in the domain group will be able to choose any defined **host firmware policy** in the group. Cisco UCS Central provides you the option to upgrade the host firmware globally to all Cisco UCS domains in a domain group at the same time.



Note

For more information on managing firmware in Cisco UCS Central, see the Firmware Management chapters in the *Cisco UCS Central Administration Guide* and *Cisco UCS Central CLI Reference Manual*.

NEW QUESTION 344

Drag and drop the storage technologies from the left onto the correct descriptions on the right.

NFSv2	uses client machine authentication
Kerberos	uses users authentication
NFSv4	authenticates clients and servers in NFSv4
RADIUS	authenticates clients to corporate directory systems

- A. Mastered
B. Not Mastered

Answer: A

Explanation:

Application Description automatically generated

The release of NFSv4 brought a revolution to authentication and security to NFS exports. NFSv4 mandates the implementation of the RPCSEC_GSS kernel module, the Kerberos version 5 GSS-API mechanism, SPKM-3, and LIPKEY. With NFSv4, the mandatory security mechanisms are oriented towards authenticating individual users, and not client machines as used in NFSv2 and NFSv3. https://web.mit.edu/rhel-doc/5/RHEL-5-manual/Deployment_Guide-en-US/s1-nfs-security.html

NEW QUESTION 345

An engineer must perform an initial configuration of VXLAN Tunnel End-Point functionality on the Cisco Nexus 9000 Series platform. All the necessary features are already enabled on the switch. Which configuration set must be used to accomplish this goal?

- ☒ NX9K(config)# interface loopback0
NX9K(config-if)# ip address 10.10.10.11/32
- ☐ NX9K(config)# interface overlay0
NX9K(config-if-overlay)# source-interface loopback0
- ☐ NX9K(config)# interface VLAN10
NX9K(config-if-nve)# source-interface loopback0
- ☐ NX9K(config)# interface loopback0
NX9K(config-if)# ip address 10.10.10.11/32
- ☐ NX9K(config)# interface tunnel1
NX9K(config-if)# tunnel source loopback0
- ☐ NX9K(config)# interface ethernet1/1
NX9K(config-if)# ip unnumbered loopback0
- ☐ NX9K(config)# interface loopback0
NX9K(config-if)# ip address 10.10.10.11/32
- ☐ NX9K(config)# interface nve1
NX9K(config-if-nve)# source-interface loopback0
- ☐ NX9K(config)# interface ethernet1/1
NX9K(config-if)# ip unnumbered loopback0
- ☐ NX9K(config)# interface loopback0
NX9K(config-if)# ip address 10.10.10.11/32
- ☐ NX9K(config)# interface VLAN10
NX9K(config-if)# ip unnumbered loopback0
- ☐ NX9K(config)# interface nve1
NX9K(config-if-nve)# source-interface loopback0

- A. Option A
B. Option B
C. Option C
D. Option D

Answer: D

NEW QUESTION 347

Which behavior defines streaming telemetry as a push model in Cisco devices?

- A. Monitoring clients are pulling data from the network to see real-time statistics
B. JSON encoded telemetry data is transported using the gRPC protocol
C. The network devices send data in JSON or GPB format to configured endpoints
D. Events and network changes generate telemetry data

Answer: D

Explanation:

<https://developer.cisco.com/docs/ios-xe/#!streaming-telemetry-quick-start-guide/streaming-telemetry>

NEW QUESTION 351

Refer to the exhibit.

```
event manager applet local-backup
event cli match "copy running-config startup-config"
action 1 cli copy [ ] bootflash:/
current config.txt
action 2 syslog msg Configuration saved and copied to
bootflash
action 3 event-default
```

A network engineer must create an EEM script that saves a copy of the running configuration to bootflash and writes a message to syslog when a user saves the configuration to a Cisco Nexus 9000 Series Switch. Which command completes the configuration set?

- A. running-config
B. policy-default
C. syslog-config
D. event-default

Answer: A

NEW QUESTION 355

An engineer implements an ACI fabric and must implement microsegmentation of endpoints within the same IP subnet using a network-based attribute. The attribute mapping must allow IP subnet independence. Which attribute must be selected?

- A. MAC address
- B. Custom
- C. Tag
- D. IP

Answer: D

Explanation:

If you want to use a network-based attribute and classify IP addresses in the same subnet, you must use the MAC-based network attribute. IP-based microsegmented EPGs do not support classification for IP addresses in the same subnet.

https://www.cisco.com/c/en/us/td/docs/switches/datacenter/aci/apic/sw/3-x/virtualization/b_ACI_Virtualization_

NEW QUESTION 359

An engineer must use the Embedded Event Manager to monitor events that occur on a cisco Nexus 9000 series switch. An environment variable needs to be created so that several policies use the monitored events in their actions. The external email server is represented by IP address 10.10.10.10. which command sets the environment variable?

- A. N9k2(config)# event manager policy environment mallserver "10.10.10.10"
- B. N9k2# event manager environment mallserver "10.10.10.10"
- C. N9k2 (config-apple1)# environment mallserver "10.10.10.10"
- D. N9k2 (config)# event manager environment mallserver "10.10.10.10"

Answer: D

Explanation:

To set an Embedded Event Manager (EEM) environment variable, use the event manager environment command in global configuration mode. To disable an EEM environment variable, use the no form of this command. <https://www.cisco.com/c/en/us/td/docs/ios-xml/ios/eem/command/eem-cr-book/eem-cr-e1.html>

NEW QUESTION 362

Which two statements about the process of upgrading an EPLD on a Cisco MDS 9000 series Switch are correct? (Choose two.)

- A. The EPLDs for all the modules on a switch must be upgraded at the same time.
- B. EPLD upgrades can be completed without powering down the module during the upgrade.
- C. EPLDs can be upgraded only to the latest EPLD image.
- D. EPLDs can be upgraded without replacing the hardware.
- E. An upgrade verification identifies the impact of each EPLD upgrade.

Answer: DE

Explanation:

https://www.cisco.com/c/en/us/td/docs/switches/datacenter/mds9000/sw/7_3/upgrade/upgrade.html

NEW QUESTION 365

What is a benefit of independent resource scaling in Cisco HyperFlex hybrid architecture?

- A. flexible expansion of compute, caching, and capacity
- B. remote booting of converged servers
- C. multivendor converged node hardware support
- D. support for compute nodes with third-party storage

Answer: D

NEW QUESTION 370

Refer to the exhibit.

```
Start time: Mon Apr 15 09:23:01 2019
Last election time: Mon Apr 15 09:24:24 2019
A: UP, PRIMARY
B: UP, SUBORDINATE
A: memb state UP, lead state PRIMARY, mgmt services state: UP
B: memb state UP, lead state SUBORDINATE, mgmt services state: UP
heartbeat state PRIMARY_OK
INTERNAL NETWORK INTERFACES:
eth1, UP
eth2, UP
HA NOT READY
No device connected to this Fabric Interconnect
```

What be connected to clear the HA NOT READY status?

- A. server chassis

- B. network uplinks
- C. management ports
- D. Layer 1-Layer 2 ports

Answer: A

NEW QUESTION 372

An engineer is asked to use SaaS to manage Cisco computing. Which two items are needed to accomplish the task? (Choose two.)

- A. UCS Manager
- B. Node name/Serial Number
- C. Device/Claim ID
- D. UCS Central
- E. Intersight

Answer: AE

Explanation:

<https://www.cisco.com/c/en/us/products/collateral/cloud-systems-management/intersight/intersight-ds.html>

NEW QUESTION 376

An engineer is configuring a vHBA template in Cisco UCS Manager. The engineer needs to specify the logical addresses used by the vHBA and the path through which the SAU Traffic flows. Which two resources must be specified in the vHBA template? (Choose two)

- A. WWIN
- B. VLAN ID
- C. Fabric ID
- D. MAC addresses
- E. WWVPN Pool

Answer: AE

NEW QUESTION 381

What is the benefit of adding Cisco HyperFlex Hardware Acceleration Cards to a HyperFlex deployment?

- A. offline encryption acceleration
- B. increased network throughput
- C. GPU acceleration
- D. Increased compression efficiency

Answer: D

Explanation:

- [Additional Information on HyperFlex Hardware Acceleration Cards](#)

Overview of HyperFlex Hardware Acceleration Cards

This chapter provides details for installation, post-installation, and troubleshooting of HyperFlex Hardware Acceleration Cards (PID: HX-PCIE-OFFLOAD-1) on HyperFlex nodes and for configuring your initial cluster. **These cards provide improved performance and compression efficiency for most storage workloads.**



Note

An HXDP-P Enterprise license is required for installing and configuring HyperFlex Hardware Acceleration Cards.

https://www.cisco.com/c/en/us/td/docs/hyperconverged_systems/HyperFlex_HX_DataPlatformSoftware/Installation_VMWare_ESXi/3_5/b_HyperFlexSystems_Installation_Guide_for_VMware_ESXi_3_5/b_HyperFlexSystems_Installation_Guide_for_VMware_ESXi_3_5_chapter_01100.html#:~:text=Overview%20of%20HyperFlex%20Hardware%20Acceleration%20Cards,-This%20chapter%20provides&text=These%20cards%20provide%20improved%20performance%20and%20compression%20efficiency%20for%20most%20storage%20workloads.

NEW QUESTION 384

An engineer configures an intersight virtual application and must claim over 200 targets. The engineer starts the Claim target procedure. The engineer has prepared this initial comma-separated value file to provision the targets:

```
UCSFI,10.1.1.3,user-1,pwd5516b817
IMC,10.1.1.5/26,user-2,pwdc65b1c43f
HX,10.1.2.1/30,user-3,pwd39860437
UCSD,1.1.1.1,user-4,pwd5003c9d5
```

Which Information must be included In the comma-separated value flit to provision the targets?

- A. FQON, AD name, IP address, email
- B. location, address, nam
- C. password

- D. certificate, user name, passwor
- E. email
- F. target type, hostname or P address, user name, password

Answer: A

NEW QUESTION 389

An engineer must allow communication between the APIC controller and an OpenStack OpFlex agent. The agent is running on a compute node directly plugged to a Cisco ACI leaf switch. The engineer must enable and extend Infra VLAN on the port facing the compute and extend the Infra VLAN to the host. Which action must be taken to meet these requirements?

- A. Enable the Infra VLAN on the Interface Profile policy
- B. Enable the Infra VLAN on the Attachable Access Entity Profile.
- C. Add the infra VLAN via the physical domain.
- D. Add the infra VLAN via the VMM domain.

Answer: C

NEW QUESTION 394

An engineer performs a Cisco UCS C480 ML M5 installation from a Cisco UCS Manager As a part of the design the server must perform an iSCSI boot from the storage array Which configuration must be performed in the SAN settings in the root organization to satisfy that condition?

- A. Implement a WWPN pool
- B. Create a virtual iSCSI vNIC
- C. Enable a host SAN pool
- D. Create an IQN suffix pool

Answer: D

NEW QUESTION 398

An engineer is asked to manage a large-scale data center and collect information from multiple Cisco NX-OS devices using Cisco NX-OS Data Management Engine model. Which technology should be used to accomplish this goal?

- A. NX-API REST
- B. NETCONF
- C. JSON-RPC
- D. NX Yang

Answer: A

Explanation:

https://www.cisco.com/c/en/us/td/docs/switches/datacenter/nexus9000/sw/7-x/programmability/guide/b_Cisco_Nexus_9000_Series_NX-OS_Programmability_Guide_7x/b_Cisco_Nexus_9000_Series_NXOS_Programmability_Guide_7x_chapter_010001.pdf

NEW QUESTION 403

Drag and drop the characteristics from the left onto the NAS protocols on the right. Some characteristics are used more than once

used to boot VHDX files	NFS <div></div> <div></div> <div></div>
used to boot VMDK files	
uses lease-based model for file locking	
used to provide shared storage for hypervisors	SMB/CIFS <div></div> <div></div>

- A. Mastered
- B. Not Mastered

Answer: A

Explanation:

Diagram Description automatically generated

NFS:

- Used to boot VMDK files
 - Uses lease-based model for file locking
 - Used to provide shared storage for hypervisors
- SMB/CIFS:
- Used to boot VHDX files
 - Used to provide shared storage for hypervisors

NEW QUESTION 408

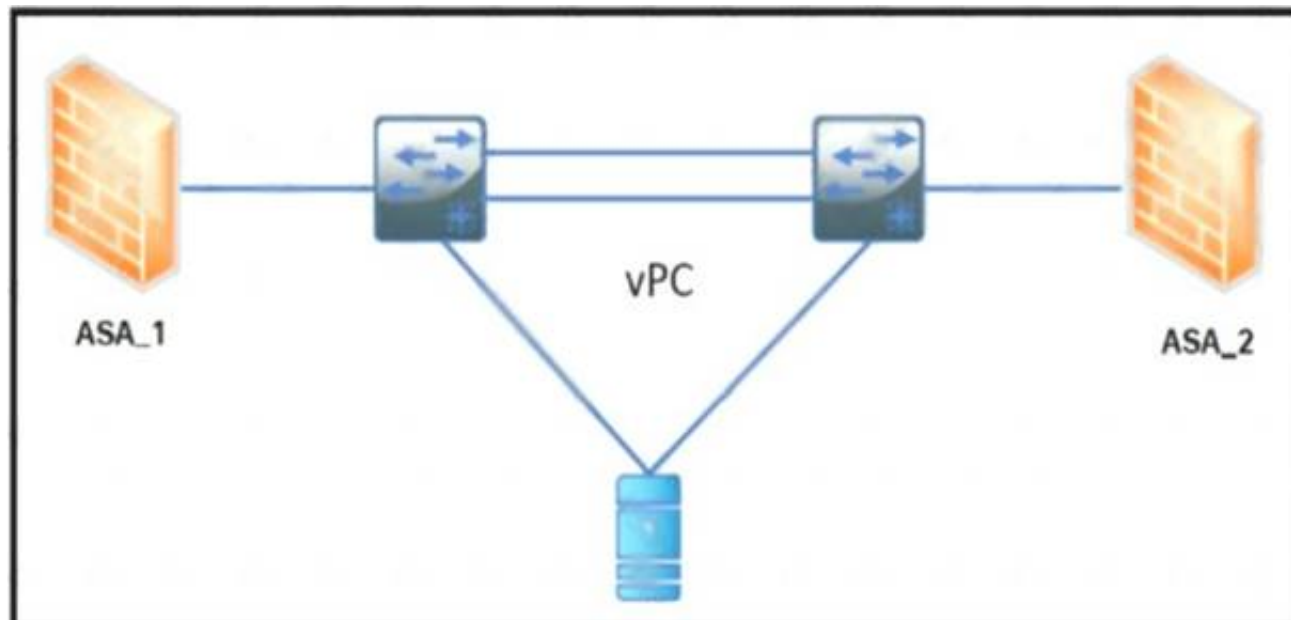
A network administrator must create a Linux container on a Cisco Nexus Series Switch. The container requires 10 percent of the CPU of the switch and 1024 MB of RAM to run successfully. Which task provides the necessary resources?

- A. Edit the container properties with the guestshell run command.
- B. Increase the compute resources with the guestshell resize command.
- C. Enable the Bash shell of the switch with the feature bash command
- D. Modify resource allocation with the virtual-service resize command.

Answer: B

NEW QUESTION 413

Refer to the exhibit



The ASA 1 acts as a Layer 3 gateway for all servers. The servers lose the gateway connectivity when the vPC peer links go down and the vPC keepalive remains up. Which action improves the high availability in the network?

- A. Create a static port channel with two links from each firewall to the switch
- B. Activate the vPC orphan-port suspend feature on the switch ports connected to the firewall
- C. Implement the IP reoVect feature on the vPC devices
- D. Enable the vPC peer gateway feature on the vPC devices

Answer: D

NEW QUESTION 417

An engineer must implement access control for Cisco UCS Manager. The configuration must meet these requirements.

- All users and user groups must be configured using Active Directory.
- User1 must have full access to the storage operations configuration.

Which action must be performed on Cisco UCS to meet the requirements?

- A. Create a custom role for the user and RADIUS for the role-mapping for Active Directory.
- B. Execute a built-in role for the user and LDAP for the role-mapping for Active Directory.
- C. Create a custom role for the user and LDAP for the role-mappings for Active Directory.
- D. Execute a built-in role for the user and RADIUS for the role-mapping for Active Directory.

Answer: B

NEW QUESTION 422

An administrator is implementing DCNM so that events are triggered when monitored traffic exceeds the configured present utilization threshold. The requirement is to configure a maximum limit of 39860437 bytes that applies directly to the statistics collected as a ratio of the total link capacity. Which DCNM performance monitoring configuration parameter must be implemented to achieve this result?

- A. Absolute Values
- B. Baseline
- C. Util%
- D. Per port Monitoring

Answer: A

NEW QUESTION 426

An engineer is implementing security on the Cisco MDS 9000 switch. Drag drop the descriptions from the left onto the correct security features on the right.

can be distributed via fabric services
uses the Exchange Fabric Membership Data protocol
allows a preconfigured set of Fibre Channel devices to logically connect to SAN ports
prevent unauthorized switches from joining the fabric or disrupting current fabric operations

Fabric Binding
Target 1
Target 2
Port Security
Target 3
Target 4

- A. Mastered
B. Not Mastered

Answer: A

Explanation:

can be distributed via fabric services
uses the Exchange Fabric Membership Data protocol
allows a preconfigured set of Fibre Channel devices to logically connect to SAN ports
prevent unauthorized switches from joining the fabric or disrupting current fabric operations

Fabric Binding
prevent unauthorized switches from joining the fabric or disrupting current fabric operations
uses the Exchange Fabric Membership Data protocol
Port Security
can be distributed via fabric services
allows a preconfigured set of Fibre Channel devices to logically connect to SAN ports

NEW QUESTION 431

An engineer must generate a Cisco UCS Manager backup. The backup should include all logical configuration and contain all system and logical configuration settings. Which backup type should be selected to meet these requirements?

- A. system configuration
B. logical configuration
C. all configuration
D. full state

Answer: C

NEW QUESTION 432

An engineer has a primary fabric that is named UCS-A and a secondary fabric that is named UCS-B. A certificate request that has a subject name of sjc2016 for a keyring that is named kr2016 needs to be created. The cluster IP address is 10.68.68.68. Which command set creates this certificate request?

- A. UCS-A # scope keyring kr2016UCS-A /keyring # create certreq 10.68.68.68 sjc2016UCS-A /keyring* # commit-buffer
B. UCS-B # scope keyring kr2016UCS-B /keyring # create certreq ip 10.68.68.68 subject-name sjc2016UCS-B /keyring* # commit-both
C. UCS-B# scope securityUCS-B /security # scope keyring kr2016UCS-B /security/keyring # set certreq 10.68.68.68 sjc2016UCS-B /security/keyring* # commit-both
D. UCS-A# scope securityUCS-A /security # scope keyring kr2016UCS-A /security/keyring # create certreq ip 10.68.68.68 subject-name sjc2016UCS-A /security/keyring* # commit-buffer

Answer: D

Explanation:

https://www.cisco.com/c/en/us/td/docs/unified_computing/ucs/ucs-manager/CLI-User-Guides/Admin-Management/4-0/b_Cisco_UCS_Manager_CLI_Administration_Mgmt_Guide_4-0/b_Cisco_UCS_Manager_CLI_Administration_Mgmt_Guide_4-0_chapter_0110.html

NEW QUESTION 433

An engineer must configure HTTPS secure management for Cisco UCS Manager using a key ring named kr2016 and a key size of 1024 bits. The environment consists of a primary fabric interconnect named UCS-A and a secondary fabric interconnect named UCS-B. Which command sequence must be used to

accomplish this goal?

- ☐ UCS-B# scope security
UCS-B /security # keyring kr2016
UCS-B /security/keyring* # set mod mod1024
UCS-A /security/keyring* # commit-buffer
- ☐ UCS-A# scope security
UCS-A /security # create keyring kr2016
UCS-A /security/keyring* # set modulus mod1024
UCS-A /security/keyring* # commit-buffer
- ☐ UCS-B# scope security
UCS-B /security # create keyring kr2016
UCS-B /security/keyring* # set size mod1024
UCS-A /security/keyring* # commit-buffer
- ☐ UCS-A# scope security
UCS-A /security # keyring name kr2016
UCS-A /security/keyring* # set size 1024
UCS-A /security/keyring* # commit-buffer

- A. Option A
- B. Option B
- C. Option C
- D. Option D

Answer: B

Explanation:

https://www.cisco.com/en/US/docs/unified_computing/ucs/sw/cli/config/guide/1.4.1/CLI_Config_Guide_1_4_1

```
UCS-A# scope security
UCS-A /security # create keyring kr220
UCS-A /security/keyring* # set modulus mod1024
UCS-A /security/keyring* # commit-buffer
UCS-A /security/keyring #
```

NEW QUESTION 436

An engineer must implement a new VRF that permits communication between all endpoint groups (EPGs) by default. The new EPGs and bridge domains (BDs) that are created in the new VRF must not require additional configuration to permit traffic between the newly created EPGs or BDs. Which action accomplishes this goal?

- A. Provide and consume a permit any contract on the VRF level
- B. Create a VRF in the common tenant.
- C. Place all EPGs in the preferred group.
- D. Implement a global contract.

Answer: C

NEW QUESTION 439

Refer to the exhibit.

```
MDSSWITCH# config terminal
MDSSWITCH(config)# fcip profile 1
MDSSWITCH(config-profile)# ip address 192.0.1.10
MDSSWITCH(config-profile)# port 5000
MDSSWITCH(config-profile)# tcp max-bandwidth-mbps 5000
min-available-bandwidth-mbps 4000 round-trip-time-ms 1
MDSSWITCH(config-profile)# exit
MDSSWITCH(config)# interface fcip 1
MDSSWITCH(config-if)# use-profile 1
MDSSWITCH(config-if)# peer-info ipaddr 192.0.1.11
MDSSWITCH(config-if)# tcp-connections 1
MDSSWITCH(config-if)# ip-compression mode2
MDSSWITCH(config-if)# no shutdown
MDSSWITCH(config-if)# exit
MDSSWITCH(config)# interface ipStorage 1/1
MDSSWITCH(config-if)# ip address 192.0.1.10 255.255.255.0
MDSSWITCH(config-if)# switchport mtu 2500
MDSSWITCH(config-if)# no shutdown
MDSSWITCH(config-if)# end
```

An engineer configures FCIP on a Cisco MDS 9000 Series switch. What is the result of implementing the configuration?

- A. The switch attempts to make two TCP connections
- B. Compression is performed by using hardware

- C. Mode2 is enabled by default.
D. Compression is performed by using software.

Answer: B

Explanation:

https://www.cisco.com/c/en/us/td/docs/switches/datacenter/mds9000/sw/8_x/config/ip_services/ipsvc/cfcip.html

NEW QUESTION 442

A SAN administrator must Implement Infrastructure monitoring for the Fibre Channel storage environment. The storage environment consists of a standalone Cisco Nexus 9000 Series Switch and Cisco MDS 9000 Series Switches. The goal is to be able to visualize the SAN support VXLAN overlays and identify storage slow drain issues. Which monitoring solution accomplishes this task?

- A. Cisco Prime Infrastructure
B. Cisco DCNM
C. Cisco APIC
D. Cisco Intersight

Answer: B

NEW QUESTION 446

An engineer must perform a POAP deployment of a Cisco Nexus 9000 Series Switch The switch must automatically receive its software image and configuration file upon power-on. Also, only UDP is permitted between the Nexus 9000 switch and the server that hosts the Cisco NX-OS system images Which set of actions completes the configuration'

- A. Enable option 67. Define TFTP transfer protocol
B. Enable option 43 Define HTTP transfer protocol.
C. Enable option 46. Define TFTP transfer protocol
D. Enable option 35. Define HTTP transfer protocol.

Answer: A

NEW QUESTION 447

An engineer is performing a configuration on a Cisco Nexus 5000 Series Switch. The requirement is for the current Fibre Channel IDs in VSAN 120 to be saved across reboots. The Cisco environment also must integrate with a third-party solution that requires persistent Fibre Channel IDs for the VSAN The WWN of the Cisco switch must be 33:*8:00:05:30:00:16:df and its Fibre Channel ID 0x070128 Which command set meets these requirements?

- ☐ fabric-binding database vsan 120
vsan 120 wwn 33:e8:00:05:30:00:16:df fcid 0x070128
- ☐ vsan 120 wwn 33:e8:00:05:30:00:16:df fcid 0x070128
fcdomain fcid preserve vsan 120
- ☐ vsan 120 wwn 33:e8:00:05:30:00:16:df fcid 0x070128
fabric-binding activate vsan 120
purge fcdomain fcid vsan 4
- ☐ fcdomain fcid database
vsan 120 wwn 33:e8:00:05:30:00:16:df fcid 0x070128
fcdomain fcid persistent vsan 120

- A. Option A
B. Option B
C. Option C
D. Option D

Answer: D

NEW QUESTION 449

Which storage protocol reduces file locks by using leasing?

- A. CIFS
B. NFS 4
C. NFS 3
D. SMB

Answer: D

Explanation:

<https://www.ciscolive.com/c/dam/r/ciscolive/apjc/docs/2016/pdf/BRKCOM-1211.pdf>

- **SMB Directory Leasing**
 - Ability to cache file and directory metadata
 - Branch offices need to make less round trips to the central server

NEW QUESTION 451

An engineer must implement a solution that prevents untrusted DHCP servers from compromising the network. The feature must be configured on a Cisco Nexus 7000 Series Switch and applied to VLAN 10. The legitimate DHCP servers are connected to interface Ethernet 2/4. Which configuration set must be used to meet these requirements?

- ☐ n7k-1(config)# ip dhcp snooping vlan 10
n7k-1(config)# interface Ethernet2/4
n7k-1(config-if)# ip dhcp snooping trust
- ☒ n7k-1(config)# ip dhcp snooping vlan 10
n7k-1(config)# interface Ethernet2/4
n7k-1(config-if)# ip dhcp snooping verify vlan 10
- ☐ n7k-1(config)# ip dhcp snooping verify
n7k-1(config)# interface Ethernet2/4
n7k-1(config-if)# ip dhcp snooping verify vlan 10
- ☐ n7k-1(config)# ip dhcp snooping verify
n7k-1(config)# vlan configuration 10
n7k-1(config-vlan)# ip dhcp snooping trust

- A. Option A
- B. Option B
- C. Option C
- D. Option D

Answer: A

NEW QUESTION 456

A Cisco UCS user called "Employee1" accidentally changed the boot policy of the Cisco UCS server at the Cisco UCS Manager root level. This change impacted all service profiles and their storage connectivity was lost. The system administrator wants to prevent this issue from recurring in the future. The new security policy mandates that access must be restricted up to the organization level and prevent other users from modifying root policies. Which action must be taken to meet these requirements?

- A. Modify the privilege level assigned to the user
- B. Define a custom user role and assign it to users
- C. Assign the user "Employee1" the network-operator role
- D. Assign users to a specific Cisco UCS locale

Answer: D

Explanation:

https://www.cisco.com/c/en/us/td/docs/unified_computing/ucs/ucs-manager/GUI-User-Guides/Admin-Managem

Locales

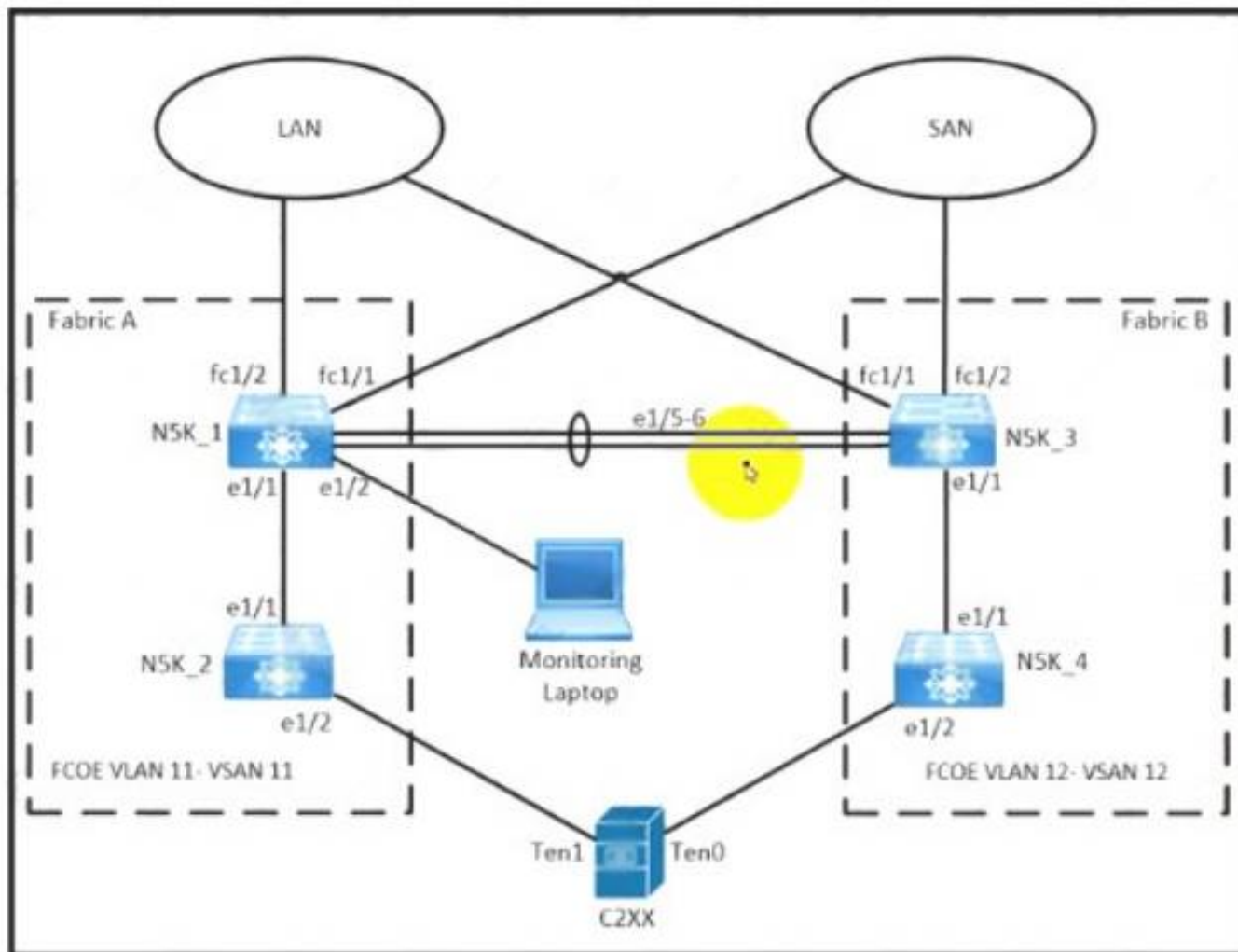
User Locales

You can assign a user to one or more locales. Each locale defines one or more organizations (domains) to which a user can access. Access is usually limited to the organizations specified in the locale. An exception is a locale without any organizations. It provides unrestricted access to system resources in all organizations.

A Cisco UCS domain can contain up to 48 user locales. Any user locales configured after the first 48 are accepted, but are inactive with faults raised.

NEW QUESTION 459

Refer to the exhibit.



LAN / Traffic Monitoring Sessions / Fabric A / Monitor Session VSAN11-Session

General Faults Events

Actions

Clear Destination

Delete

Properties

Name: VSAN11-Session

Admin State: ☒ Enabled ☐ Disabled

Destination:

Admin Speed: ☐ 1 Gbps ☒ 10 Gbps ☐ 40 Gbps

Operational State: Unknown

Operational State Reason: Unknown

Configuration Success: Yes

Configuration Failure Reason:

Sources

☒ Uplink Ethernet Ports

An engineer is creating a SPAN session to send a copy of all the Fabric-A VSAN 11 traffic on NSK_1 to the monitoring laptop. The configurator that is presented has already been applied to Cisco UCS Manager. Which action completes the configuration?

- A. Activate a NetFlow monitoring session
- B. Create a SAN traffic monitoring session
- C. Set VLAN 11 as the traffic destination
- D. Select VSAN 11 as the source of traffic.

Answer: C

NEW QUESTION 460

Which action must be performed before renumbering a Cisco UCS chassis?

- A. Move the chassis to new ports on fabric interconnect.
- B. Re-acknowledge the chassis.
- C. Decommission the chassis.
- D. Run the shut and no shut command on the connected ports.

Answer: C

NEW QUESTION 463

An engineer troubleshoots an Fibre Channel deployment on a Cisco MDS 9000 Series Switch. What does this output indicate about port channel 1?

```
mds9509# show int po1
port-channel 1 is trunking
Hardware is Fibre Channel
Port WWN is 24:01:00:0d:ec:20:ba:00
Admin port mode is F, trunk mode is on
snmp link state traps are enabled
Port mode is TF
Port vsan is 1
Speed is 8 Gbps
Trunk vsans (admin allowed and active) (1,20)
Trunk vsans (up) (1,20)
Trunk vsans (isolated) ()
Trunk vsans (initializing) ()
5 minutes input rate 112 bits/sec, 14 bytes/sec, 0 frames/sec
5 minutes output rate 152 bits/sec, 19 bytes/sec, 0 frames/sec
25787798 frames input, 14359038212 bytes
0 discards, 0 errors
0 CRC, 0 unknown class
0 too long, 0 too short
23082 frames output, 1013152 bytes
0 discards, 0 errors
18 input OLS, 14 LRR, 29 NOS, 0 loop inits
17 output OLS, 0 LRR, 21 NOS, 0 loop inits
Member[1] : fc4/2
Member[2] : fc4/8
Interface last changed at Thu Mar 6 06:27:36 2020
```

- A. Port channel 1 is configured to be an ISL.
- B. Port channel 1 is configured to connect to a host bus adapter.
- C. Port channel 1 is configured to connect to an NPIV switch.
- D. Port channel 1 is configured to connect to an NPV switch.

Answer: A

NEW QUESTION 465

Refer to the exhibit.

```
switch(config)# feature dhcp
switch(config)# ip dhcp snooping
switch(config)# service dhcp
switch(config)# ip dhcp snooping vlan 100,200,250-252
switch(config)# ip dhcp relay information option
```

Which action is taken to ensure that the relay agent forwards the DHCP BOOTREQUEST packet to a DHCP server?

- A. Configure the interface of the DHCP server as untrusted.
- B. Configure the IP address of the DHCP server.
- C. Enable the DHCP relay agent.
- D. Verify the DHCP snooping bindings.

Answer: B

Explanation:

https://www.cisco.com/c/en/us/td/docs/switches/datacenter/sw/4_0/dcnm/security/configuration/guide/sec_dcnm Text Description automatically generated

Configuring a DHCP Server Address on a VLAN Interface

You can configure a DHCP server IP address on a VLAN interface (sometimes referred to as a switched virtual interface or SVI). When an inbound DHCP BOOTREQUEST packet arrives on the VLAN interface, the relay agent forwards the packet to the IP address specified.

NEW QUESTION 470

A network engineer is adding a Cisco HyperFlex data platform to the Cisco intersight management portal. Which two components are required for Intersight to claim the Cisco HyperFlex data platform? (Choose two.)

- A. device FQDN

- B. device public IP address
- C. device claim code
- D. device ID
- E. device serial number

Answer: CD

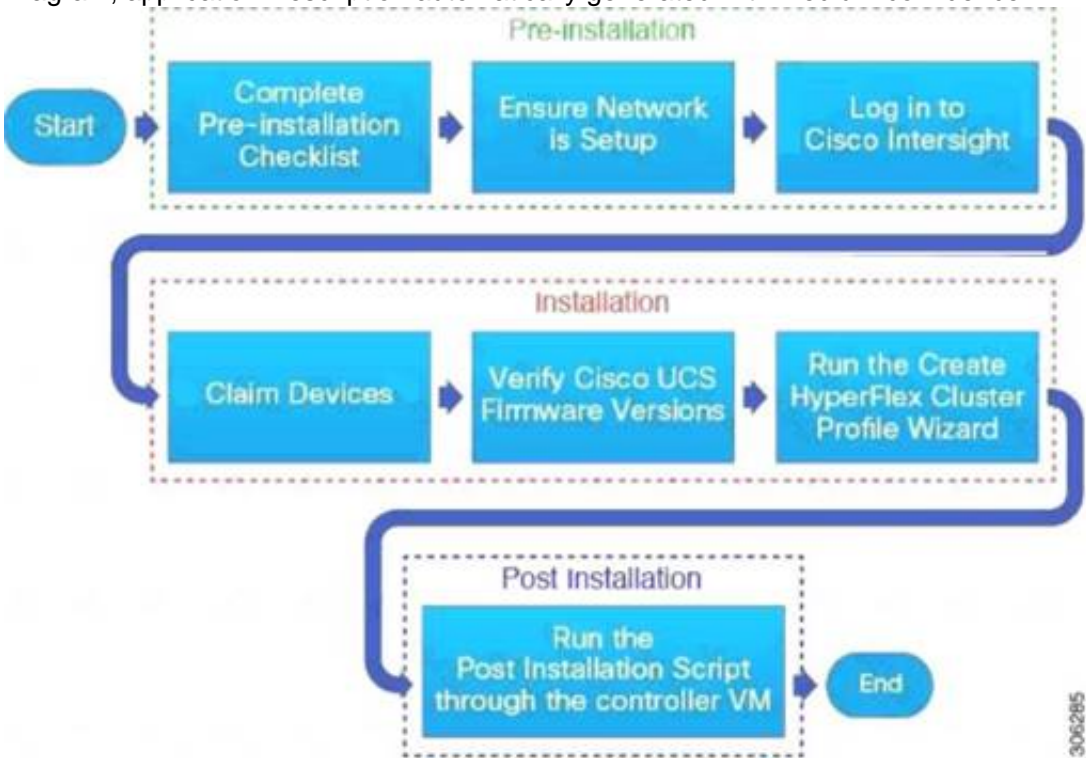
Explanation:

Text Description automatically generated

- Step 1** In the Cisco Intersight, left navigation pane, select **ADMIN > Targets**.
- Step 2** In the **Targets** details page, click **Claim a New Target**.
- Step 3** In the **Claim a New Target** wizard, select **Hyperconverged > Cisco HyperFlex Cluster** and complete the following fields:
- Note** You can locate the **Device ID** and the **Claim Code** information in:
- a. Cisco UCS Manager and Cisco IMC by navigating to **Admin > Device Connector**.
 - b. Cisco HyperFlex by navigating to **HyperFlex Connect UI > Settings > Device Connector**.
 - c. Cisco UCS Director by navigating to **Administration > Device Connector**.

UI Element	Essential Information
Device ID	<p>Enter the applicable Device ID.</p> <ul style="list-style-type: none">For a UCS Domain, use the serial number of the primary and subordinate FIs, in this format: (Serial number of FI-A & Serial number of FI-B). Example: [SAL1924GKV6&SAL1913CJ7V]For a standalone server, use serial number. Example: NGTR12345For HyperFlex, use Cluster UUID. Example: xxxxxxxx-xxxx-xxxx-xxxx-

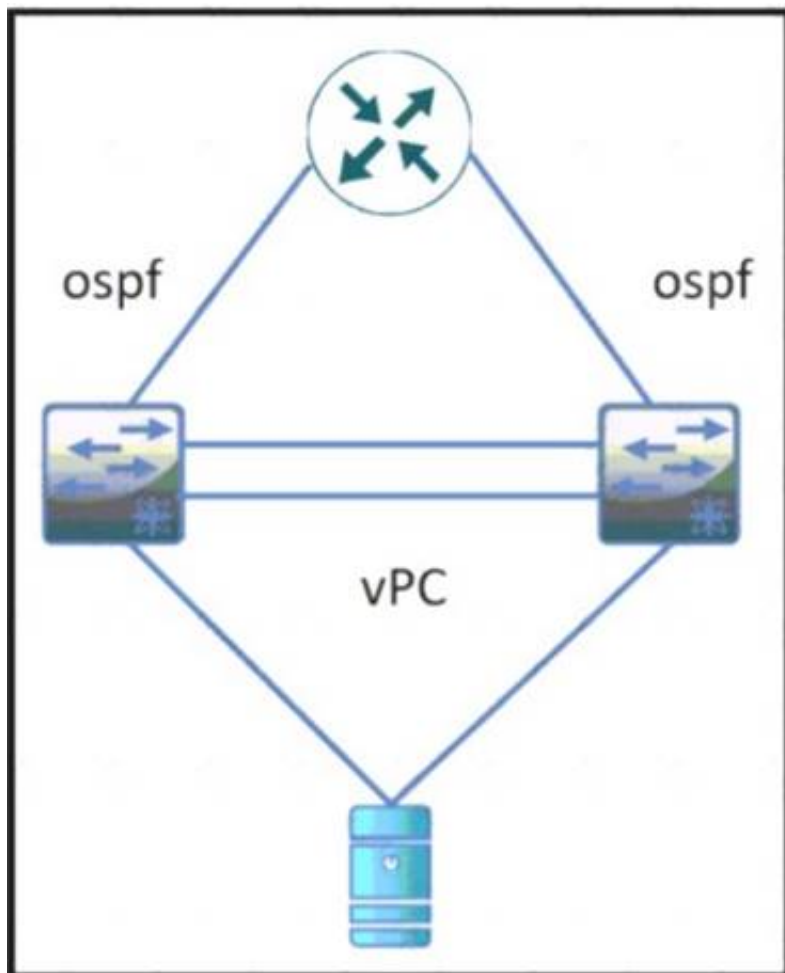
Diagram, application Description automatically generated with medium confidence



https://www.cisco.com/c/en/us/td/docs/hyperconverged_systems/HyperFlex_HX_DataPlatformSoftware/HyperFlex_Installation_Guide_for_Intersight/b_HyperFlex_Installation_Guide_for_Intersight/b_HyperFlex_Installation_Guide_for_Intersight_chapter_011.html
<https://www.cisco.com/c/en/us/support/docs/hyperconverged-infrastructure/hyperflex-hx-dataplatform/214268-cisco-intersight-hyperflex-installatio.html>

NEW QUESTION 472

Refer to the exhibit



During a vPC peer switch reload, there is packet loss between the server and the router Which action must be taken to prevent this behavior during future reloads?

- A. Set the routed uplink ports of the Cisco Nexus peers as orphans.
- B. Increase the vPC delay restore timer.
- C. Decrease the OSPF hello and dead interval timers.
- D. Disable vPC ARP synchronize on the vPC peers.

Answer: B

NEW QUESTION 476

Refer to the exhibit.

```

Step 20 Enter no (no is the default) if you are satisfied with the configuration.

The following configuration will be applied:

switchname CiscoMDS
interface mgmt0
  ip address 192.168.10.10
  subnetmask 255.255.255.0
  no shutdown
ip default-gateway 192.168.10.1
telnet server enable
no ssh server enable
no system default switchport shutdown
system default switchport trunk mode on
no zone default-zone permit vsan 1-4093
zoneset distribute full vsan 1-4093
Would you like to edit the configuration? (yes/no) [n]: no

Step 21 Enter yes (yes is default) to use and save this configuration.

Use this configuration and save it? (yes/no) [y]: yes
  
```

An engineer is configuring a Cisco MDS 9000 Series Switch for the first time. After the initial setup process, the name server at IP 192.168.10.11 is missing from the configuration. Which set of actions completes the configuration?

- A. Enter no at step 21 and reinitialize the install
- B. Press the Esc key to access ROMMON mode.
- C. Enter no at step 21 and reload the switch
- D. Configure the advanced IP options.
- E. Enter yes at step 21 to edit the configuration
- F. Add the line dns-server 192.168.10.11.
- G. Enter yes at step 21 and log in
- H. Modify the startup configuration DNS

Answer: B

NEW QUESTION 481

Drag and drop the hyperflex characteristics from the left onto the appropriate. HyperFlex Node types on the right. Not all options are used.

uses only SSD drives for caching	Hybrid Node
contains HDDs for the capacity layer	
uses SSD drives or NVMe storage for caching	
has SSD drives for the capacity layer	All Flash Node
recommended for repeatable and sustainable high performance, especially for scenarios with a larger working set of data	
recommended for capacity-sensitive solutions, lower budgets, and fewer performance-sensitive applications	

- A. Mastered
B. Not Mastered

Answer: A

Explanation:

uses only SSD drives for caching	Hybrid Node uses only SSD drives for caching contains HDDs for the capacity layer recommended for repeatable and sustainable high performance, especially for scenarios with a larger working set of data
contains HDDs for the capacity layer	
uses SSD drives or NVMe storage for caching	
has SSD drives for the capacity layer	All Flash Node uses SSD drives or NVMe storage for caching has SSD drives for the capacity layer recommended for capacity-sensitive solutions, lower budgets, and fewer performance-sensitive applications
recommended for repeatable and sustainable high performance, especially for scenarios with a larger working set of data	
recommended for capacity-sensitive solutions, lower budgets, and fewer performance-sensitive applications	

NEW QUESTION 482

An engineer is configuring a vHBA template in UCS Manager. The engineer needs to specify the logical addresses used by the vHBA and the path through which the SAN traffic flows. Which two resources must be specified in the vHBA template? (Choose two.)

- A. MAC addresses
B. WWPNPool
C. WWNN
D. VLAN ID
E. Fabric ID

Answer: BE

Explanation:

vNIC and vHBA Templates

vNIC and vHBA resources are always associated with specific FIs (A-side or B-side fabric interconnect). A typical Service Profile has at least two vNICs and two vHBAs, one bound to each side. vNIC (or vHBA) templates can be used to encapsulate both the MAC address pool (or WWPN pool) association as well as the fabric ID.

Best Practice: vNIC and vHBA Templates

Create reusable vNIC and vHBA templates in which termination is either reflected in the name (e.g., "fc0-A") or through well-accepted conventions (e.g., even interface to A side, and odd interface to B side).

vNIC templates should be thought of as application-specific network profiles that include important security definitions, such as VLAN mappings, as shown in Figure 6.

https://www.cisco.com/c/en/us/products/collateral/servers-unified-computing/ucs-manager/whitepaper_c11-697

NEW QUESTION 487

Which mroute state is created when Bidirectional PIM is deployed at a site?

- A. MVPN Type-6
- B. *,G
- C. MVPN Type-7
- D. S,G

Answer: B

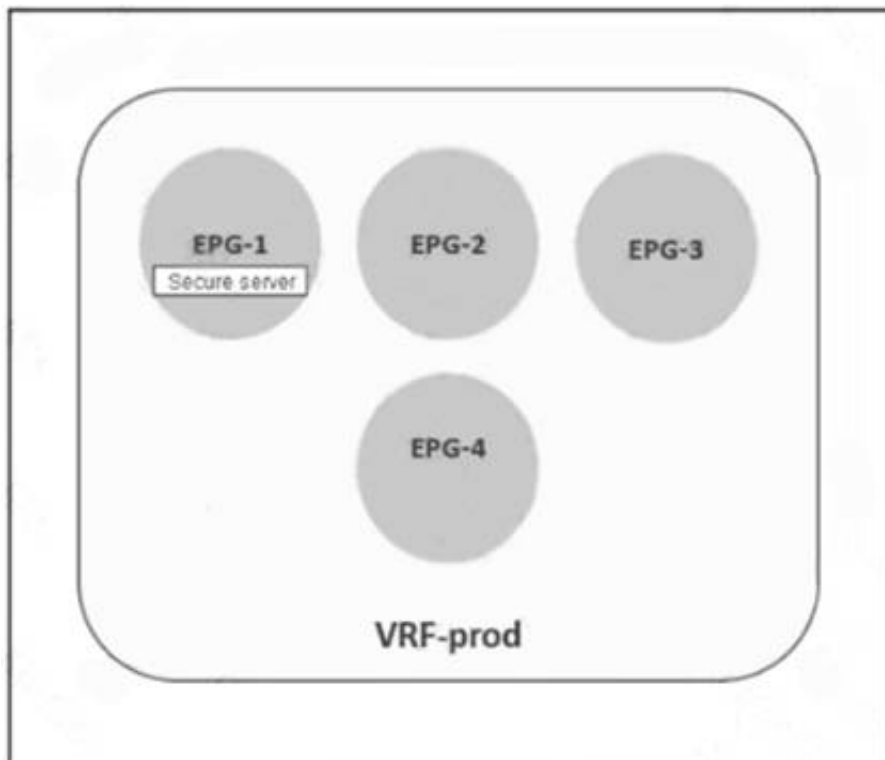
Explanation:

Bidirectional PIM has been invented for networks where we have many sources and receivers talking to each other. PIM Sparse mode RP builds 2 entries *, G and S, G but when we use PIM bidirectional mode, the RP will never build a S,G entry and, it only allow the *,G entry.

https://www.cisco.com/c/en/us/td/docs/ios-xml/ios/ipmulti_pim/configuration/xe-16-5/imc-pim-xe-16-5-book/im and <https://networklessons.com/multicast/multicast-bidirectional-pim>

NEW QUESTION 489

Refer to the exhibit.



A secure server that provides services to EPG-2 must be placed in EPG-1. The remaining EPGs—EPG-2, EPG-3, and EPG-4—must communicate without any contracts. Which set of actions accomplishes this goal?

- ☒ Exclude EPG-2, EPG-3, and EPG-4 from the preferred group.
Configure a contract between EPG-2 and EPG-3.
- ☐ Include EPG-2, EPG-3, and EPG-4 in the preferred group.
Configure a contract between EPG-1 and EPG-2.
- ☐ Include EPG-1 and EPG-2 in the preferred group.
Configure a contract between EPG-2 and EPG-3.
- ☐ Exclude EPG-2, EPG-3, and EPG-4 from the preferred group.
Configure a contract between EPG-1 and EPG-3.

- A. Option A
- B. Option B
- C. Option C
- D. Option D

Answer: B

NEW QUESTION 490

Refer to the exhibit.

```
N9K-1# show running-config interface Ethernet1/1
switchport access vlan 10
spanning-tree port type edge
switchport port-security aging time 33
switchport port-security maximum 3
switchport port-security mac-address sticky
switchport port-security

N9K-1# show mac address-table interface ethernet 1/1
Legend:
    * - primary entry, G - Gateway MAC, (R) - Routed MAC, O - Overlay MAC
    age - seconds since last seen, + - primary entry using vPC Peer-Link,
    (T) - True, (F) - False, C - ControlPlane MAC, ~ - vsan
    VLAN      MAC Address      Type      age      Secure NTFY Ports
-----+-----+-----+-----+-----+-----+-----
*   10      0050.7966.6801    secure    -         T         F      Eth1/1
*   10      0050.7966.6802    secure    -         T         F      Eth1/1
*   10      0050.7966.6803    secure    -         T         F      Eth1/1
```

An engineer configures port security on a Cisco Nexus 9000 Series Switch. The requirement is to prevent any newly learned MAC addresses from forwarding traffic on the interface. Also, the already learned MAC addresses must not be affected by the changes. Which configuration meets these requirements?

- A. switchport port-security violation shutdown
- B. switchport port-security violation isolate
- C. switchport port-security violation protect
- D. switchport port-security violation restrict

Answer: C

NEW QUESTION 491

Drag and drop the NAS features from the left onto the NAS descriptions on the right. Not all features are used

block-based data storage	storage type
Ethernet protocol	clustering type
FCoE	connectivity type
file-based data storage	serving protocol type
Fibre Channel protocol	
stripe data and metadata across nodes	
UPnP	

- A. Mastered
- B. Not Mastered

Answer: A

Explanation:

A screenshot of a computer Description automatically generated with medium confidence
https://en.wikipedia.org/wiki/Network-attached_storage

NEW QUESTION 492

What is an advantage of using Ansible for automation as compared to puppet and chef?

- A. Ansible automates the enforcement of configuration settings.
- B. Ansible perform automation without installing a software agent on the target node.
- C. Ansible configures a set of CLI commands on a device by using NETCONF.
- D. Ansible abstracts a scenario so that set of configuration setting can be used across multiple operating systems.

Answer: B

NEW QUESTION 493

An engineer performs a set of configuration changes for the vPC domain using Session Manager. Which two commands are used to verify the configuration and apply the device changes when no errors are returned?
(Choose two)

- A. write
- B. verify
- C. commit
- D. checkpoint
- E. apply

Answer: BC

Explanation:

https://www.cisco.com/c/en/us/td/docs/switches/datacenter/nexus9000/sw/6-x/system_management/configuration

Verifying a Session

Use the following command in session mode to verify a session:

Command	Purpose
verify [verbose] Example: switch(config-s)# verify	Verifies the configuration as a whole, based on the existing hardware and software configuration and resources. Cisco NX-OS returns an error if the configuration does not pass this verification.

Committing a Session

Use the following command in session mode to commit a session:

Command	Purpose
commit [verbose] Example: switch(config-s)# commit	Validates the configuration changes made in the current session and applies valid changes to the device. If the validation fails, Cisco NX-OS reverts to the original configuration.

<https://www.cisco.com/c/en/us/td/docs/switches/datacenter/nexus5000/sw/configuration/guide/cli/CLIconfigura>

NEW QUESTION 496

Which component is excluded by default from the host firmware package?

- A. network interface controller
- B. board controller
- C. storage controller
- D. local disk

Answer: D

NEW QUESTION 497

An engineer must configure OSPFv2 connectivity between a pair of Cisco Nexus switches. The connection between the switches must meet these requirements:

- Use unicast for updates.
- Use decentralized communication of updates.
- Full adjacency between switches.

Which configuration is needed to meet these requirements?

- A. interface with a type of p2p network
- B. stub area between the neighbors
- C. filter list between the neighbors
- D. virtual link between the neighbors

Answer: A

NEW QUESTION 502

A DevOps engineer must implement a bash script to query a REST API and return the available methods. Which code snippet completes the script?

```
curl -i -X --missing code-- http://api.cisco.com:8080/api -u admin:xT41M5P3X425VOE71NB5D
```

- A. DELETE
- B. TRACE
- C. POST
- D. OPTIONS

Answer: C

NEW QUESTION 505

Due to a domain name change at a customer site, a Cisco UCS cluster must be renamed. An engineer must recommend a solution to ensure that the Cisco UCS Manager is available over HTTPS. Which action accomplishes this goal?

- A. Reinstall the cluster to generate the default key ring certificate
- B. Generate a new default key ring certificate from the Cisco UCS Manager
- C. Reboot the SSO component of the Cisco UCS Manager
- D. Regenerate the default key ring certificate manually

Answer: D

Explanation:

https://www.cisco.com/c/en/us/td/docs/unified_computing/ucs/ucs-manager/GUI-User-Guides/Admin-Managem

The default key ring certificate must be manually regenerated if the cluster name changes or the certificate expires.

NEW QUESTION 508

An engineer is configuring VNTag between a virtualized server and a Cisco Nexus 5500 Series switch. Drag and drop the configuration steps from the into the correct order on the right.

Configure support for VNTag mode on the interface that connects to the server.	Step 1
Configure the vNICs of the server.	Step 2
Configure the server to support NIV mode.	Step 3
Enable the virtualization feature set.	Step 4
Configure the port profile.	Step 5
Install the virtualization feature set.	Step 6

- A. Mastered
- B. Not Mastered

Answer: A

Explanation:

install the virtualization feature set
Enable the virtualization feature set
Configure the port profile
Configure support for VNTag mode on the interface that connects to the server.
Configure the server to support NIV mode
Configure the vNICs of the server
<https://www.cisco.com/c/en/us/support/docs/switches/nexus-5000-series-switches/117691-config-5500switch-00.html>
https://www.cisco.com/c/en/us/td/docs/switches/datacenter/nexus5500/sw/adapter-fex/6x/b_5500_Adapter_FEX_Config_6x/b_5500_Adapter_FEX_Config_602N11_chapter_010.html

NEW QUESTION 511

An engineer wants to create a backup of Cisco UCS Manager for disaster recovery purposes. What are two characteristics of a full state backup of a Cisco UCS Manager database? (Choose two.)

- A. performs a complete binary dump of the database as a .txz file

- B. contains all of the configurations
- C. performs a complete binary dump of the database as a bin file
- D. performs a complete binary dump of the databases as a sql file
- E. contains all of the runtime states and statuses but not the configurations

Answer: AB

Explanation:

File: compressed file in .tar.gz format

<https://www.virtual-odyssey.com/2019/10/31/its-the-little-stuff-cisco-ucs-backups/> the file extension for bin in a cisco context is usually the OS.

tar files are used for backup. <https://peazip.github.io/tar-file-format.html>

NEW QUESTION 512

An engineer configured an environment that contains the vPC and non-vPC switches. However, it was noticed that the downstream non-vPC switches do not receive the upstream vPC switch peers. Which vPC feature must be implemented to ensure that vPC and non-vPC switches receive same STP bridge ID from the upstream vPC switch peers?

- A. vpc local role-priority 4000
- B. peer-switch
- C. system-mac 0123.4567.89ab
- D. peer-gateway

Answer: B

Explanation:

Peer-Switch feature allows the vPC peers use the same STP root ID as well as the same bridge ID.

NEW QUESTION 514

A network administrator must perform a system upgrade on a Cisco MDS 9000 Series Switch. Due to the recent changes by the security team:

- The AAA server is unreachable.
- All TCP communication between the MDS 9000 Series Switch and AAA servers is disabled. Which actions must be used to perform the upgrade?

- A. Log in locally to the MDS 9000 Series Switch using a network-admin role and download the upgrade files from the remote TFTP server.
- B. Log in locally to the MDS 9000 Series Switch using a server-admin role and download the upgrade files from the remote FTP server.
- C. Log in to a server storing the upgrade files remotely using a server-admin role and download the files to the MDS 9000 Series Switch using SFTP.
- D. Log in to a server storing the upgrade files remotely using a network-admin role and download the files to the MDS 9000 Series Switch using HTTP.

Answer: A

NEW QUESTION 519

Refer to the exhibit.

```
switch# show radius-server
Global RADIUS shared secret:*****
retransmission count:5
timeout value:10
following RADIUS servers are configured:
  myradius.cisco.users.com:
    available for authentication on port:1812
    available for accounting on port:1813
  172.22.91.37:
    available for authentication on port:1812
    available for accounting on port:1813
    RADIUS shared secret:*****
  10.10.0.0:
    available for authentication on port:1812
    available for accounting on port:1813
    RADIUS shared secret:*****

switch# show radius-server groups
total number of groups:4
following RADIUS server groups are configured:
  group radius:
    server: all configured radius servers
  group Group1:
    server: Server3 on auth-port 1812, acct-port 1813
    server: Server5 on auth-port 1812, acct-port 1813
  group Group5:
```

A network engineer requires remote access via SSH to a Cisco MDS 9000 Series Switch. The solution must support secure access using the local user database when the RADIUS servers are unreachable from the switches. Which command meets these requirements?

- A. aaa authentication none
- B. aaa authentication login default group radius
- C. aaa authentication login default group local
- D. aaa authentication login default fallback error local

Answer: D

Explanation:

https://www.cisco.com/c/en/us/td/docs/switches/datacenter/mds9000/sw/6_2/configuration/guides/security/nx-o

Configuring Fallback Mechanism for Authentication

You can enable/disable fallback to local database in case the remote authentication is set and all AAA servers are unreachable (authentication error). The fallback is set to local by default in case of an authentication error. You can disable this fallback for both console and ssh/telnet login. Disabling this fallback will tighten the security of authentication.

The following steps explain the fallback mechanism for authentication:

Step 1 By default fallback will be enabled for both default/console login. The “sh run aaa all” command can be used to verify this.

Step 2 Disabling fallback will print a warning message.

The CLI syntax and behavior is as follows:

	Command	Purpose
Step 1	switch# config t switch(config)#	Enters configuration mode.
Step 2	switch(config)# show run aaa all aaa authentication login default fallback error local aaa authentication login console fallback error local	Displays the default fallback behavior.
Step 3	switch(config)# no aaa authentication login default fallback error local WARNING!!! Disabling fallback can lock your switch.	Disables the fallback to local database for authentication. Note Replace default with console in this command to disable fallback to console.

NEW QUESTION 521

Refer to the exhibit.

```
Switch1# show checkpoint summary
1) pim-checkpoint:
Created by admin
Created at Tue, 00:50:29 22 Jun 2021
Size is 24,855 bytes
User Checkpoint Summary
-----
Description: Created by Admin.

2) system-fm-pim:
Created by admin
Created at Tue, 00:08:57 22 Jun 2021
Size is 24,834 bytes
System Checkpoint Summary
-----
Description: Created by Feature Manager.
```

Which command must be used to restore configuration changes made by disabling the PIM feature and skipping any errors?

Refer to the exhibit. Which command must be used to restore configuration changes made by disabling the PIM feature and skipping any errors?

- A. rollback running-config checkpoint new-checkpoint stop-at-first-failure
- B. rollback running-config checkpoint new-checkpoint verbose
- C. rollback running-config checkpoint system-fm-pim-best-effort
- D. rollback running-config checkpoint system-fm-pim atomic

Answer: C

NEW QUESTION 525

Which file service protocol allows the files to appear locally mapped to the client and provides view, store, and update capabilities on a remote Linux-based storage repository that also serves as a distributed file system standard for NAS?

- A. NFS
- B. FTP
- C. iSCSI
- D. IFS

Answer: D

NEW QUESTION 526

A network engineer must restore the running configuration on a Cisco Nexus 5000 Series Switch to an existing snapshot called “stable1”. The restore procedure should proceed only if no errors occur. Which configuration should be used to accomplish this goal?

- ☐ rollback running-config checkpoint stable1 best-effort
- ☐ rollback checkpoint stable1 best-effort running-config atomic
- ☐ rollback checkpoint stable1 best-effort running-config best-effort
- ☐ rollback running-config checkpoint stable1 atomic

- A. Option A
- B. Option B
- C. Option C
- D. Option D

Answer: D

NEW QUESTION 528

An infrastructure architect is analyzing the deployment type for an application. Several companies must be able to operate the application environment and integrate it with a third-party protocol. The development team also must have maximum control over their development environment, including the operating system used, Python interpreter, and corresponding libraries. Which cloud deployment solution meets these requirements?

- A. public cloud Storage as a Service
- B. private cloud Platform as a Service
- C. hybrid cloud Software as a Service
- D. community cloud Infrastructure as a Service

Answer: D

NEW QUESTION 531

An engineer is implementing NPV mode on a Cisco MDS 9000 Series Switch. Which action must be taken?

- A. The FCNS database must be disabled in the fabric.
- B. A port channel must be configured to the upstream switch.
- C. All switches in the fabric must be Cisco MDS switches.
- D. NPIV must be enabled on the upstream switch.

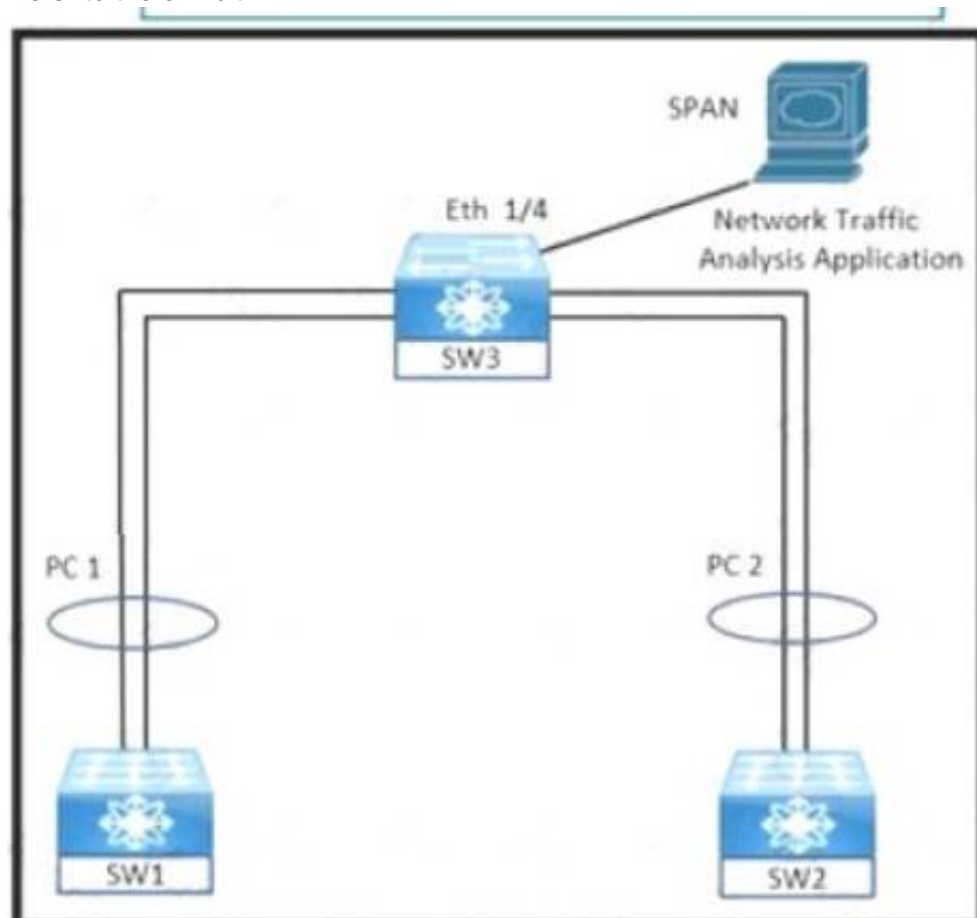
Answer: D

Explanation:

https://www.cisco.com/c/en/us/td/docs/switches/datacenter/mds9000/sw/5_0/configuration/guides/int/nxos/cli_i

NEW QUESTION 532

Refer to the exhibit.



An engineer must monitor ingress traffic from SW1 and SW2 port-channel interfaces from SW3. Which configuration must be implemented to accomplish this goal?

- A)

```
SW3# configure terminal
SW3(config)# source interface port-channel 1 rx
SW3(config)# source interface port-channel 2 tx

SW3(config)# interface ethernet 1/4
SW3(config-if)# destination interface ethernet 1/4
SW3(config-if)# exit

SW3(config)# interface Port-channel 1-2
SW3(config-if)# switchport monitor
SW3(config-if)# exit
```

B)

```
SW3# configure terminal
SW3(config)# monitor session 2
SW3(config-monitor)# source interface port-channel 1 tx
SW3(config-monitor)# source interface port-channel 2 tx

SW3(config)# interface Port-channel 1
SW3(config-if)# switchport monitor
SW3(config-if)# exit

SW3(config)# interface Port-channel 2
SW3(config-if)# switchport monitor
SW3(config-if)# exit
```

C)

```
SW3# configure terminal
SW3(config)# monitor session 2
SW3(config-monitor)# source interface port-channel 1 tx
SW3(config-monitor)# source interface port-channel 2 rx

SW3(config)# interface port-channel 1
SW3(config-if)# switchport monitor
SW3(config-if)# exit

SW3(config)# interface port-channel 2
SW3(config-if)# switchport monitor
SW3(config-if)# exit
```

D)

```
SW3# configure terminal
SW3(config)# monitor session 2
SW3(config-monitor)# source interface port-channel 1 rx
SW3(config-monitor)# source interface port-channel 2 rx

SW3(config)# interface ethernet 1/4
SW3(config-if)# switchport monitor
SW3(config-if)# exit

SW3(config)# monitor session 2
SW3(config-monitor)# destination interface ethernet 1/4
```

- A. Option A
- B. Option B
- C. Option C
- D. Option D

Answer: D

NEW QUESTION 535

.....

Thank You for Trying Our Product

* 100% Pass or Money Back

All our products come with a 90-day Money Back Guarantee.

* One year free update

You can enjoy free update one year. 24x7 online support.

* Trusted by Millions

We currently serve more than 30,000,000 customers.

* Shop Securely

All transactions are protected by VeriSign!

100% Pass Your 350-601 Exam with Our Prep Materials Via below:

<https://www.certleader.com/350-601-dumps.html>