

# Cisco

## Exam Questions 350-601

Implementing and Operating Cisco Data Center Core Technologies



#### NEW QUESTION 1

A customer needs a tool to take advantage of the CI/CD model to streamline its operation and optimize cost. The customer wants to integrate the solution with the cisco products it currently it currently uses, Including Cisco ACI networking and Cisco UCS servers. The solution should also provide on-premises Kubernetes and AppDynamics performance monitoring. Because of the security requirements, the solution not install a local client on products under management. which orchestration solution meets these requirements?

- A. Cisco APIC
- B. CISCO UCS director
- C. Cisco DCNM
- D. Cisco CloudCenter

**Answer: D**

#### NEW QUESTION 2

Which product includes prebuilt templates that can be used to customize fabric deployments?

- A. Cisco ACI
- B. Cisco UCS Manger
- C. Cisco data Center Network Manger
- D. Cisco Tetratation

**Answer: C**

#### Explanation:

<https://www.cisco.com/c/en/us/products/collateral/cloud-systems-management/prime-data-center-networkmanag>

[https://www.cisco.com/c/en/us/td/docs/switches/datacenter/sw/11\\_2\\_1/config\\_guide/lanfabric/b\\_dcnm\\_fabric\\_lan/template\\_usage.html](https://www.cisco.com/c/en/us/td/docs/switches/datacenter/sw/11_2_1/config_guide/lanfabric/b_dcnm_fabric_lan/template_usage.html)

#### NEW QUESTION 3

A network administrator must configure an extra keyring in Cisco UCS Manager. The key must provide a high level of encryption and secure authentication when users use the web interface. Which configuration command set must be applied to meet these requirements?



- A. Option A
- B. Option B
- C. Option C
- D. Option D

**Answer: C**

#### Explanation:

[https://www.cisco.com/c/en/us/td/docs/unified\\_computing/ucs/ucs-manager/CLI-User-Guides/Admin-Managem](https://www.cisco.com/c/en/us/td/docs/unified_computing/ucs/ucs-manager/CLI-User-Guides/Admin-Managem) “cipher-suite-mode secure” is invalid command.

“Cipher-suite-mode high” is valid command. “tls-protocol tls1-2” is invalid command. “Ssl-protocol tls1-2” is valid command.

```
UCS-A# scope system
UCS-A /system # scope services
UCS-A /system/services # enable https
UCS-A /system/services* # set https port 443
Warning: When committed, this closes all the web sessions.
UCS-A /system/services* # set https keyring kring7984
UCS-A /system/services* # set https cipher-suite-mode high
UCS-A /system/services* # set https ssl-protocol tls1-2
UCS-A /system/services* # commit-buffer
UCS-A /system/services #
```

#### NEW QUESTION 4

Refer to the exhibit

```
#!/bin/bash
### BEGIN INIT INFO
# Provides:      capture
# Required-Start: $local_fs $network $named $time $syslog
# Required-Stop: $local_fs $network $named $time $syslog
# Description:   Continuous capture script
### END INIT INFO

start() {
    tcpdump -W 3 -C 100 -i Eth1-42 -w /tmp/capture.pcap &
    RETVAL=$?
}

stop() {
    killall -9 tcpdump
    RETVAL=$?
}

case "$1" in
    start)
        start
        ;;
    stop)
        stop
        ;;
    *)
        echo "Usage: $0 {start|stop}"
        RETVAL=2
esac

exit $RETVAL
```

A network engineer must run a continuous capture on a port A script called "capture" is created to start and stop the capture task Which command sequence makes the capture persistent after a reboot?

- ☐ initctl add capture  
initctl init capture
- ☐ chkconfig --add capture  
chkconfig --level 3 capture
- ☐ systemctl enable capture  
systemctl start capture
- ☐ run bash /etc/init.d/capture  
run bash start-stop-daemon

- A. Option A
- B. Option B
- C. Option C
- D. Option D

**Answer: C**

#### NEW QUESTION 5

Refer to the exhibit.

```
UCS-A# scope eth-traffic-mon
UCS-A /eth-traffic-mon # scope fabric a
UCS-A /eth-traffic-mon/fabric # create eth-mon-session Monitor33
UCS-A /eth-traffic-mon/fabric/eth-mon-session/dest-interface* #
commit-buffer
UCS-A /eth-traffic-mon/fabric/eth-mon-session/dest-interface #

UCS-A# scope service-profile org / serviceprofile1
UCS-A /org/service-profile # scope vnic ether-dynamic-prot-008
UCS-A /org/service-profile/vnic # create mon-src Monitor23
UCS-A /org/service-profile/vnic/mon-src* # commit-buffer
UCS-A /org/service-profile/vnic/mon-src #

UCS-A# scope eth-traffic-mon
UCS-A /eth-traffic-mon # scope fabric a
UCS-A /eth-traffic-mon/fabric # scope eth-mon-session Monitor33
UCS-A /eth-traffic-mon/fabric/eth-mon-session # enable
UCS-A /eth-traffic-mon/fabric/eth-mon-session* # commit-buffer
```

Service degradation is reported on a VM that is deployed on a Cisco UCS blade server. The traffic from the vNIC is required to SPAN in both directions to a packet analyzer that is connected to UCS-A slot 2 port 12. Which two commands are needed to complete the configuration? (Choose two.)

- A. UCS-A /org/service-profile/vnic/mon-src\* # set direction both
- B. UCS-A /eth-traffic-mon/fabric/eth-mon-session' # create dest-interface 2 12
- C. UCS-A /org/service-profile/vnic/mon-src\* # set direction receive transmit
- D. UCS-A /eth-traffic-mon/fabric/eth-mon-session # activate
- E. UCS-A /eth-traffic-mon/fabric/eth-mon-session\* # create eth-mon-session/dest-interface 2 12

Answer: AB

Explanation:  
[https://www.cisco.com/en/US/docs/unified\\_computing/ucs/sw/cli/config/guide/1.4.1/CLI\\_Config\\_Guide\\_1\\_4\\_1\\_chapter42.html](https://www.cisco.com/en/US/docs/unified_computing/ucs/sw/cli/config/guide/1.4.1/CLI_Config_Guide_1_4_1_chapter42.html)

NEW QUESTION 6

An engineer deploys a custom Guest Shell rootfs on a Nexus 9000 Series Switch. Drag and drop the steps from the left into the order required to deploy the solution on the right. Not all options are used.

Customize the guest shell rootfs.	Step 1
Export the Guest Shell rootfs.	Step 2
Store it in a file server.	Step 3
Import the Guest Shell rootfs to other switches.	Step 4
Install the specific Guest Shell across devices simultaneously.	Step 5

- A. Mastered
- B. Not Mastered

Answer: A

Explanation:  
A picture containing text Description automatically generated  
<https://www.cisco.com/c/en/us/td/docs/switches/datacenter/nexus9000/sw/93x/programmability/guide/b-cisco-ne>



## Replicating the Guest Shell

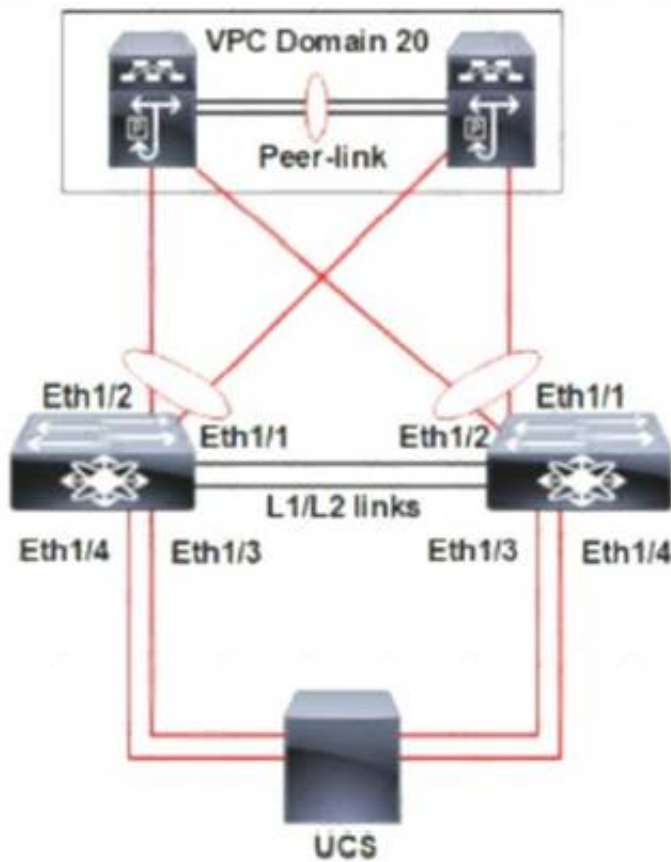
Beginning with Cisco NX-OS release 7.0(3)I7(1), a Guest Shell rootfs that is customized on one switch can be deployed onto multiple switches.

The approach is to <sup>1</sup>customize and then export the Guest Shell rootfs and store it on a file server. <sup>2</sup>A POAP script can <sup>3</sup>download (import) the Guest Shell rootfs to other switches and <sup>4</sup>install the specific Guest Shell across many devices simultaneously.

- Exporting Guest Shell rootfs
- Importing Guest Shell rootfs
- Importing YAML File
- show guestshell Command

### NEW QUESTION 7

Refer to the exhibit.



A pair of Cisco Nexus switches form a vPC. A new chassis is added to the pre-existing Cisco UCS domain. A new chassis must be discovered, and all links from the chassis to the LAN network must be established. Which set of actions accomplishes these requirements?

- ☐ Set the chassis discovery policy action to four links. Configure Eth1/3 and Eth1/4 as server ports. Acknowledge the chassis.
- ☒ Set the chassis discovery policy action to four links. Configure Eth1/1 and Eth1/2 as uplink Fibre Channel ports. Set the link group preference to None.
- ☐ Set the chassis discovery policy action to one link. Configure Eth1/1 and Eth1/2 as uplink Ethernet ports. Set the link group preference to Port Channel.
- ☐ Set the chassis discovery policy action to one link. Configure Eth1/3 and Eth1/4 as server ports. Acknowledge the chassis.

- A. Option A
- B. Option B
- C. Option C
- D. Option D

**Answer: C**

### NEW QUESTION 8

What is a recommended design choice in a topology for multipathing iSCSI traffic?

- A. single initiator to dual targets
- B. initiators and targets in separate subnets
- C. dual initiators to a single target with bonded interfaces
- D. two NICs bonded together on the initiator

**Answer:** A

**Explanation:**

[https://www.cisco.com/c/en/us/td/docs/switches/datacenter/nexus1000/sw/4\\_2\\_1\\_s\\_v\\_1\\_5\\_1/system\\_management/configuration/guide/n1000v\\_system/n1000v\\_system\\_13iscsi.html#wp1052813](https://www.cisco.com/c/en/us/td/docs/switches/datacenter/nexus1000/sw/4_2_1_s_v_1_5_1/system_management/configuration/guide/n1000v_system/n1000v_system_13iscsi.html#wp1052813)

#### NEW QUESTION 9

An engineer is enabling port security on a Cisco MDS 9000 Series Switch. Which feature of enabling port security on a Cisco MDS 9000 Series Switch must be considered?

- A. It always learns about switches that are logging in.
- B. It can be distributed by using Cisco Fabric services.
- C. It authorizes only the configured sWWN to participate in the fabric.
- D. It binds the fabric at the switch level.

**Answer:** B

**Explanation:**

### Port Security Configuration Distribution

The port security feature uses the Cisco Fabric Services (CFS) infrastructure to enable efficient database management, provide a single point of configuration for the entire fabric in the VSAN, and enforce the port security policies throughout the fabric.

[https://www.cisco.com/c/en/us/td/docs/switches/datacenter/mds9000/sw/6\\_2/configuration/guides/security/nx-o](https://www.cisco.com/c/en/us/td/docs/switches/datacenter/mds9000/sw/6_2/configuration/guides/security/nx-o)

#### NEW QUESTION 10

Which two configuration settings are available in the Cisco UCS Firmware Auto Sync Server policy? (Choose two.)

- A. Immediate Action
- B. User Acknowledge
- C. No Action
- D. Delayed Action
- E. User Notification

**Answer:** BC

#### NEW QUESTION 10

An engineer configures port security on a Cisco MDS 9000 Series Switch. The MDS switch configuration must meet these requirements

- The switch must inmate the VSAN 4 port security database despite any conflicts.
- New devices must be statically added to the switch.
- Configuration changes for VSAN 4 must be applied throughout the fabric with any lodes on the fabric released

Which configuration set meets these requirements?

- ☐ port-security activate vsan 4  
no port-security auto-learn vsan 4  
port-security allocate  
port-security commit vsan 4
- ☒ port-security activate vsan 4  
port-security manual-learn vsan 4  
port-security allocate  
port-security commit
- ☐ port-security activate vsan 4 force  
port-security auto-learn vsan 4  
port-security distribute  
port-security commit
- ☐ port-security activate vsan 4 force  
no port-security auto-learn vsan 4  
port-security distribute  
port-security commit vsan 4

- A. Option A
- B. Option B
- C. Option C
- D. Option D

**Answer:** D

#### NEW QUESTION 15

A network engineer is deploying a cisco ALL-flash hyperflex solution. Which local storage configuration is required for the operating system and persistent logging?

- A. Two solid state drives
- B. Two SATA drives
- C. One SATA drive
- D. One solid state drive

**Answer:** D

#### NEW QUESTION 19

Which configuration generates a syslog message when CPU utilization is higher than 60%?

- A. event manager applet HIGH-CPUevent snmp oid 1.3.6.1.4.1.9.9.109.1.1.1.1.6.1 get-type exact entry-op gt 60 poll-interval 5 action 1.0 syslog priority notifications msg "cpu high"
- B. event manager applet HIGH-CPUevent snmp oid 1.3.6.1.4.1.9.9.109.1.1.1.1.6.1 get-type exact entry-op lt 60 poll-interval 5 action 1.0 syslog priority notifications msg "cpu high"
- C. event manager applet HIGH-CPUevent snmp oid 1.3.6.1.4.1.9.9.109.1.1.1.1.6.1 get-type next entry-op gt 60 poll-interval 5 action 1.0 syslog priority notifications msg "cpu high"
- D. event manager applet HIGH-CPUevent snmp oid 1.3.6.1.4.1.9.9.109.1.1.1.1.6.1 get-type next entry-op lt 60 poll-interval 5 action 1.0 syslog priority notifications msg "cpu high"

**Answer:** A

#### Explanation:

<https://www.cisco.com/c/en/us/support/docs/ip/internet-protocol-ip/200931-EEM-Subsystem-in-Order-to-Monitor-CPU-Tr.pdf>  
<https://blog.ipspace.net/2008/06/generate-snmp-trap-on-high-cpu-load.html>

#### NEW QUESTION 22

Which two authentication types does Cisco UCS Manager support when configuration authentication? (Choose two.)

- A. local
- B. LDAP
- C. 802.1X
- D. Kerberos
- E. PAM

**Answer:** AB

#### Explanation:

[https://www.cisco.com/c/en/us/td/docs/unified\\_computing/ucs/ucs-manager/GUI-User-Guides/Admin-Management/3-2/b\\_Cisco\\_UCS\\_Admin\\_Mgmt\\_Guide\\_3\\_2/b\\_Cisco\\_UCS\\_Admin\\_Mgmt\\_Guide\\_3\\_2\\_chapter\\_0101.html](https://www.cisco.com/c/en/us/td/docs/unified_computing/ucs/ucs-manager/GUI-User-Guides/Admin-Management/3-2/b_Cisco_UCS_Admin_Mgmt_Guide_3_2/b_Cisco_UCS_Admin_Mgmt_Guide_3_2_chapter_0101.html)

#### NEW QUESTION 23

A network engineer plans to upgrade the firmware of a Cisco UCS B-Series chassis by using the Auto Install feature. Which component is upgraded during the infrastructure firmware upgrade stage?

- A. Cisco IMC
- B. Adapter
- C. I/O module
- D. BIOS

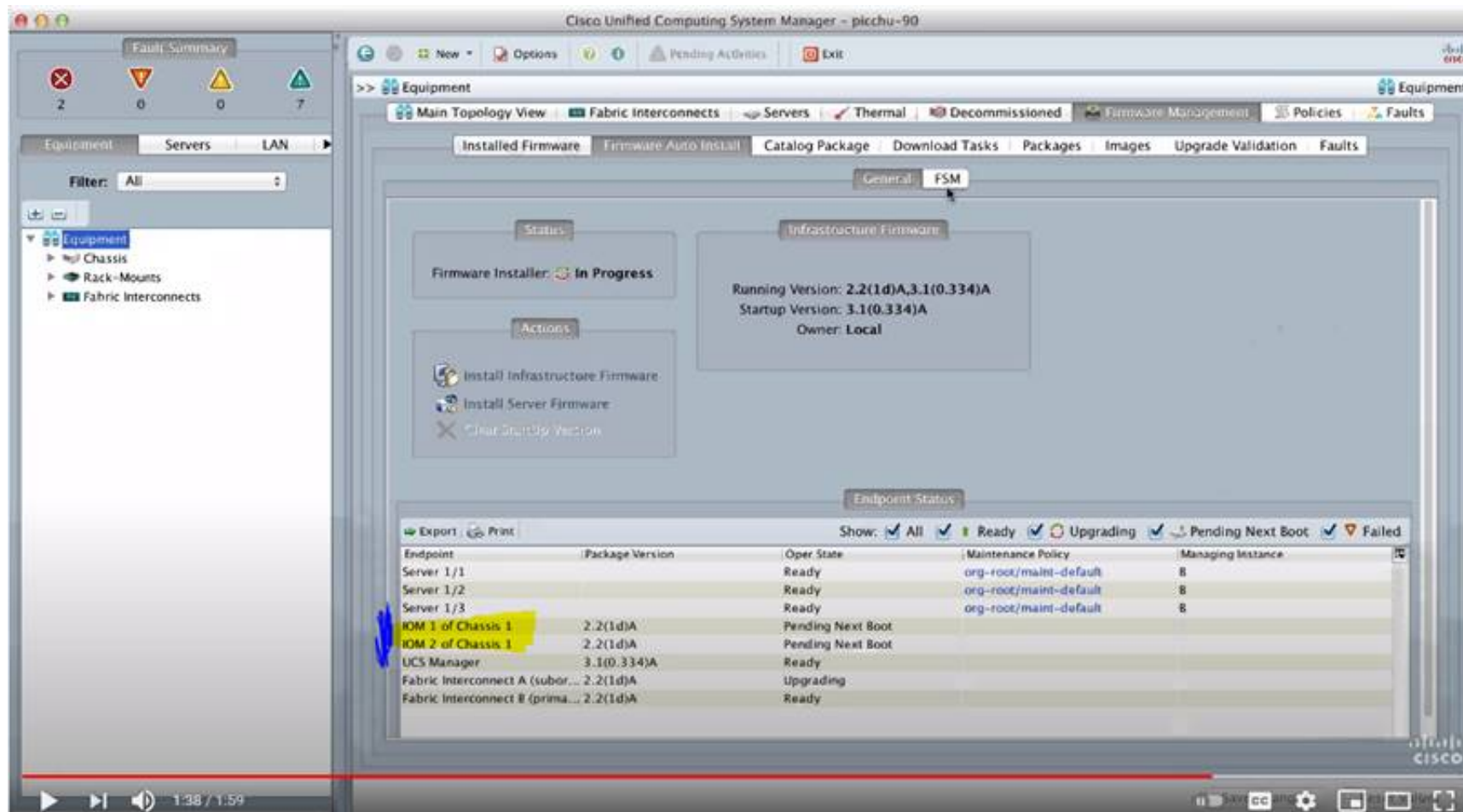
**Answer:** C

#### Explanation:

[https://www.cisco.com/c/en/us/td/docs/unified\\_computing/ucs/ucs-manager/GUI-User-Guides/Firmware-Mgmt/](https://www.cisco.com/c/en/us/td/docs/unified_computing/ucs/ucs-manager/GUI-User-Guides/Firmware-Mgmt/) <https://www.youtube.com/watch?v=g-4OgYigvRI>

### Direct Upgrade After Auto Install

During Auto Install, the startup version of the default infrastructure pack is configured. To successfully complete a direct upgrade or activation of Cisco UCS Manager, Fabric Interconnects, and IOMs after Auto Install, ensure that the startup version is cleared before starting direct upgrade or activation. If the startup version of the default infrastructure pack is configured, you cannot directly upgrade or activate Cisco UCS Manager, Fabric Interconnects, and IOMs. , provides detailed steps for clearing the startup version.



#### NEW QUESTION 26

Which two protocols are used by the NFSv4 protocol? (Choose two.)

- A. FCP
- B. TCP
- C. UDP
- D. Ethernet
- E. IP

**Answer:** BE

#### NEW QUESTION 29

An engineer must configure a Cisco UCS blade system that is managed by Cisco UCS Manager. All four connected interfaces between the blade system and the fabric interconnects must be used. Additionally, the connectivity must tolerate any link failure between the I/O module and the fabric interconnects. Which action accomplishes these requirements?

- A. Configure port aggregation with LACP policy set to default
- B. Configure Firmware Auto Sync Server policy to Auto Acknowledge
- C. Configure Link Group Preference to Port Channel.
- D. Configure chassis/FEX discovery pokey action to four links

**Answer:** D

#### NEW QUESTION 33

After a Cisco Nexus 7000 Series Switch chassis replacement, the administrator discovers that all vPC-enabled LACP port channels are reinitialized. The administrator wants to prevent this issue the next time the chassis is replaced. Which two actions must be taken to meet this requirement before the isolated device is reloaded? (Choose two)

- A. Set the vPC MAC address to a lower value than the peer
- B. Change the vPC system-priority of the replacement chassis to a higher value than the peer if.
- C. Change the vPC system-priority of the replacement chassis to a lower value than the peer.
- D. Set the vPC MAC address to a higher value than the peer
- E. Configure auto-recovery to the disable state on both peers

**Answer:** BE

#### Explanation:

[https://www.cisco.com/c/en/us/td/docs/switches/datacenter/nexus9000/sw/6-x/interfaces/configuration/guide/b\\_](https://www.cisco.com/c/en/us/td/docs/switches/datacenter/nexus9000/sw/6-x/interfaces/configuration/guide/b_)

-----

<https://community.cisco.com/t5/networking-documents/vpc-auto-recovery-feature-in-nexus-7000/ta-p/3123651>



## vPC and LACP

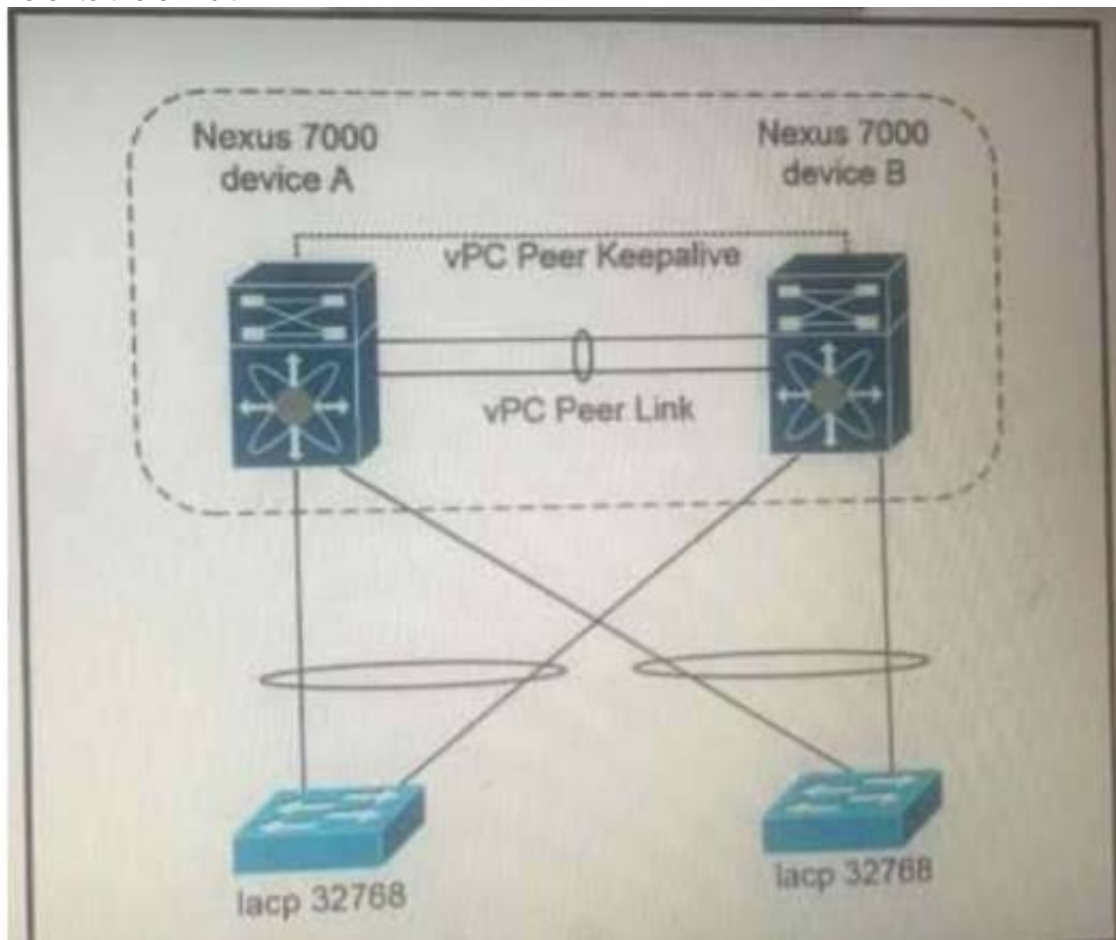
The Link Aggregation Control Protocol (LACP) uses the system MAC address of the vPC domain to form the LACP Aggregation Group (LAG) ID for the vPC.

You can use LACP on all the vPC EtherChannels, including those channels from the downstream switch. We recommend that you configure LACP with active mode on the interfaces on each EtherChannel on the vPC peer switches. This configuration allows you to more easily detect compatibility between switches, unidirectional links, and multihop connections, and provides dynamic reaction to run-time changes and link failures.

The vPC peer link supports 16 EtherChannel LACP interfaces. You should manually configure the system priority on the vPC peer-link switches to ensure that the vPC peer-link switches have a **higher LACP priority** than the downstream connected switches. A **lower numerical value system priority means a higher LACP priority**.

### NEW QUESTION 37

Refer to the exhibit.



Which configuration ensure that the cisco Nexus 7000 series switches are the primary devices for LACP?

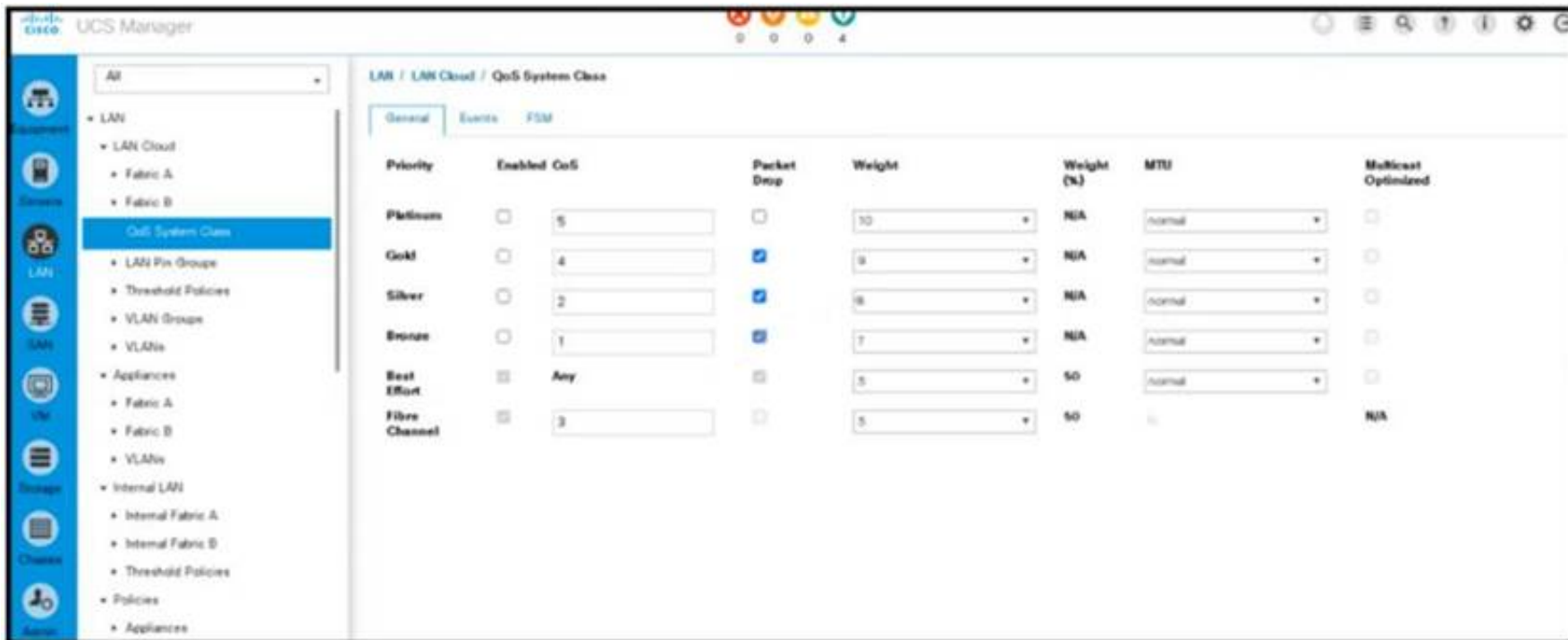
- A. `N7K_A(config-vpc-domain)# system-priority 4000`  
`N7K_B(config-vpc-domain)# system-priority 4000`
- B. `N7K_A(config-vpc-domain)# system-priority 100`  
`N7K_B(config-vpc-domain)# system-priority 200`
- C. `N7K_A(config-vpc-domain)# system-priority 32768`  
`N7K_B(config-vpc-domain)# system-priority 32768`
- D. `N7K_A(config-vpc-domain)# role priority 1`  
`N7K_B(config-vpc-domain)# role priority 2`

- A. Option A
- B. Option B
- C. Option C
- D. Option D

**Answer: C**

### NEW QUESTION 38

Refer to the exhibit.



An engineer must configure a QoS policy that controls only vHBA traffic. Which policy must be used to meet this requirement?

- A. Best Effort
- B. Fibre Channel
- C. Gold
- D. Platinum

**Answer: B**

#### NEW QUESTION 39

Which method must a network engineer use to upgrade the BIOS firmware of a Cisco UCS standalone C-Series rack-mount server?

- A. Use the Cisco host upgrade utility.
- B. Use the Cisco hardware upgrade utility.
- C. Use the Cisco host firmware policy.
- D. Use the U-ACPI Interface.

**Answer: A**

#### NEW QUESTION 43

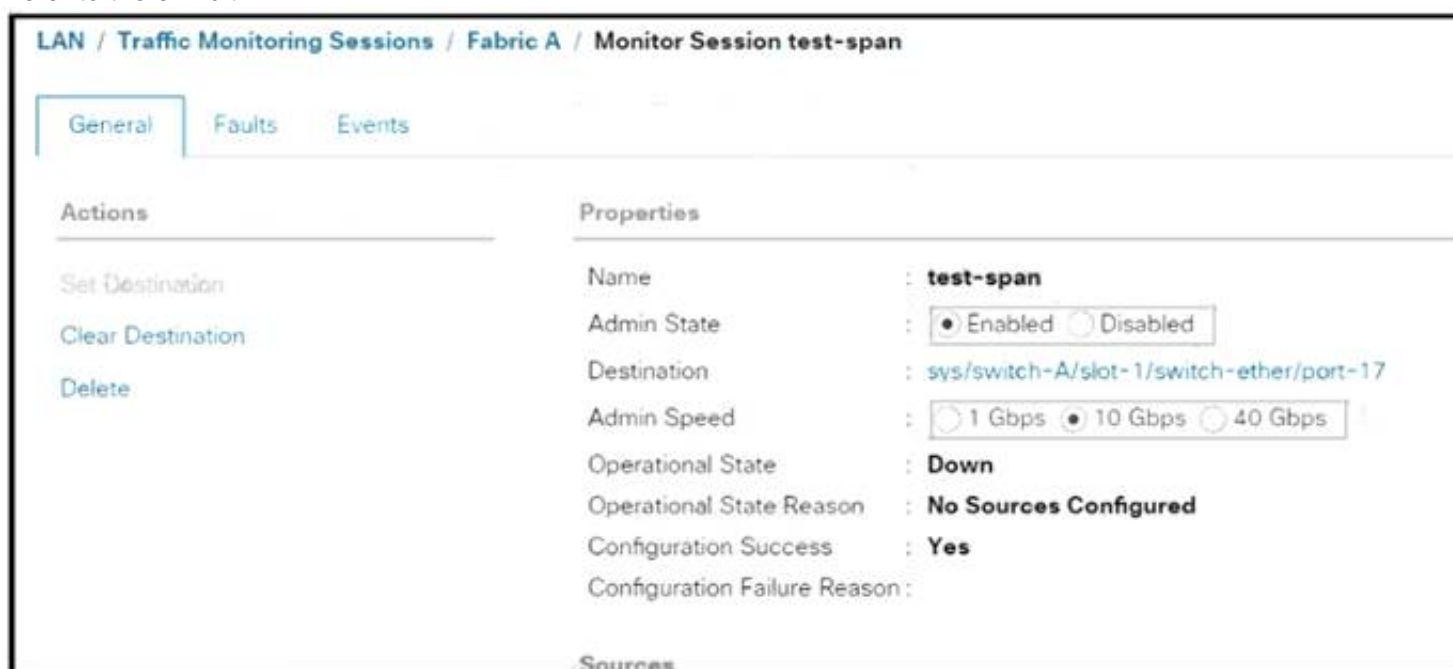
Which two actions must be taken to directly connect a Fibre Channel storage array to a Cisco UCS domain? (Choose two.)

- A. Configure a new VSAN
- B. Create a new vHBA dedicated to the storage array
- C. Configure a Fibre Channel port channel
- D. Create a Storage Connection Policy
- E. Configure the Fibre Channel poet as a Fibre Channel storage port

**Answer: AE**

#### NEW QUESTION 47

Refer to the exhibit.



An engineer must monitor all LAN traffic on Fabric A from a blade server. Which source should be configured in the test-span monitor session to complete this task?

- A. all vHBAs from the service profile that correspond to this server
- B. all uplink FCoE ports
- C. all uplink Ethernet ports
- D. all vNICs from the service profile that correspond to this server

**Answer:** D

**Explanation:**

[https://www.cisco.com/en/US/docs/unified\\_computing/ucs/sw/gui/config/guide/141/UCSM\\_GUI\\_Configuration](https://www.cisco.com/en/US/docs/unified_computing/ucs/sw/gui/config/guide/141/UCSM_GUI_Configuration)

Guidelines and Recommendations for Traffic Monitoring

When configuring or activating traffic monitoring, consider the following guidelines:

- You can create and store up to 16 traffic monitoring sessions, but only two can be active at the same time.
- A traffic monitoring session is disabled by default when created. To begin monitoring traffic, you must activate the session.
- To monitor traffic from a server, add all vNICs from the service profile corresponding to the server.
- To monitor traffic from a VM, you must first determine the identity of the dynamic vNIC assigned to the VM. Follow the procedure in to find the vNIC and view its identity properties, then add the vNIC as a source for the monitoring session. If you later move the VM using VMotion, a new dynamic vNIC is assigned and you must reconfigure the monitoring source.

Viewing Dynamic vNIC Properties in a VM

- You can monitor Fibre Channel traffic using either a Fibre Channel traffic analyzer or an Ethernet traffic analyzer. When Fibre Channel traffic is monitored using an Ethernet traffic monitoring session, with an Ethernet destination port, the destination traffic will be FCoE.
- Because a traffic monitoring destination is a single physical port, a traffic monitoring session can monitor only a single fabric. To monitor uninterrupted vNIC traffic across a fabric failover, you must create two sessions—one per fabric—and connect two analyzers. Add the vNIC as the traffic source for both sessions.
- All traffic sources must be located within the same switch as the destination port.
- A port configured as a destination port cannot also be configured as a source port.
- A member port of a port channel cannot be configured individually as a source. If the port channel is configured as a source, all member ports are source ports.

**NEW QUESTION 50**

Due to a newly announced security advisory, a company has been informed that they must update the configuration of 500 network devices that are deployed in their network. The engineering team must assist the operations team to prepare for this update. The operations team does not have direct access to the network devices and must log in via a Linux server. This is the first time that the team is making a network-wide configuration and must change all devices without first installing additional software on the network devices. The operations team is unfamiliar with automation and scripting technologies. Which automation tool must be used to accomplish this goal?

- A. Chef
- B. Ansible
- C. Puppet
- D. Saltstack

**Answer:** B

**NEW QUESTION 52**

An engineer is configuring AAA authentication on an MDS 9000 switch. The LDAP server is located under the IP 10.10.2.2. The data sent to the LDAP server should be encrypted. Which command should be used to meet these requirements?

- A. ldap-server host 10.10.2.2 enable-ssl
- B. ldap-server 10.10.2.2 port 443
- C. ldap server host 10.10.2.2 key SSL\_KEY
- D. ldap-server 10.10.2.2 key SSL\_KEY

**Answer:** A

**NEW QUESTION 57**

An engineer is implementing the Cisco ACI fabric and wants to reduce the amount of TCAM resources consumed by the fabric. The engineer also needs to ensure that all EPGs in a VRF consume the same services. Which action should be taken to meet these requirements?

- A. Configure a single contract provided and consumed in all EPGs
- B. Configure preferred groups in the VRF for all EPGs
- C. Implement an unenforced VRF
- D. Implement vZone feature

**Answer:** A

**NEW QUESTION 60**

An engineer must shut down the Ethernet 1/2 interface when the Ethernet 4/5 interface state is down. Drag and drop the CLI commands from the bottom onto the blanks in the exhibit to implement this EEM. Not all commands are used.



```
switch# configure terminal
switch(config)# track 1 
switch(config-track)# end

switch(config)# event manager applet track_4_5_down
switch(config-applet)# event track 1 state down
switch(config-applet)# action 1 syslog msg EEM applet
track_4_5_down shutting down port eth1/2 due to eth4/5
being down
switch(config-applet)# action 2 cli conf term
switch(config-applet)# action 3 cli 
switch(config-applet)# action 4 cli 
switch(config-applet)# end
```





- A. Mastered
- B. Not Mastered

**Answer:** A

**Explanation:**

Text Description automatically generated

**NEW QUESTION 63**

An engineer must configure a VXLAN routing on a cisco Nexus 9000 series Switch. The engineer requires a solution where all the leaf switches have the same gateway MAC and IP address. Which configuration set accomplishes this task?

A)

```
NX9K(config)# fabric forwarding anycast-gateway-mac AA:BB:AA:BB:AA:BB
NX9K(config)# interface VLAN-interface-name NX9K(config-if)# fabric forwarding mode anycast-gateway
```

B)

```
NX9K(config)# fabric forwarding anycast-gateway-mac AA:BB:AA:BB:AA:BB
NX9K(config)# interface VLAN-interface-name
NX9K(config-if)# vrf member vrf-name
NX9K(config-if)# fabric forwarding mode anycast-gateway
```

C)

```
NX9K(config)# install feature-set fabric
NX9K(config)# feature-set fabric
NX9K(config)# fabric forwarding anycast-gateway-mac AA:BB:AA:BB:AA:BB
NX9K(config)# interface VLAN-interface-name
NX9K(config-if)# vrf member vrf-name
NX9K(config-if)# fabric forwarding mode anycast-gateway
```

D)

```
NX9K(config)# install feature-set fabric
NX9K(config)# feature-set fabric
NX9K(config)# fabric forwarding anycast-gateway-mac AA:BB:AA:BB:AA:BB
NX9K(config)# interface VLAN-interface-name
NX9K(config-if)# fabric forwarding mode anycast-gateway
```

- A. Option A
- B. Option B
- C. Option C
- D. Option D

**Answer:** C

**NEW QUESTION 64**

In an FCoE environment, for which two sets of data must an interface that implements the PAUSE mechanism always provision sufficient ingress buffer? (Choose two)

- A. frames that were sent with high credit
- B. frames that were processed and transmitted by the transmitter before the PAUSE frame left the sender
- C. frames that were sent on the link but not yet received.
- D. frames that were sent on the link and received.



E. frames that were processed and transmitted by the transmitter after the PAUSE frame left the sender.

**Answer:** BC

**Explanation:**

[https://www.cisco.com/c/en/us/td/docs/switches/datacenter/nexus7000/sw/fcoe/config/cisco\\_nexus7000\\_fcoe\\_config\\_guide\\_8x/configuring\\_fcoe.html](https://www.cisco.com/c/en/us/td/docs/switches/datacenter/nexus7000/sw/fcoe/config/cisco_nexus7000_fcoe_config_guide_8x/configuring_fcoe.html)

#### NEW QUESTION 67

Drag and drop the technologies from the left onto the description on the right.

NFSv2	uses client machine authentication
Kerberos	uses users authentication
NFSv4	authenticates clients and servers in NFSv4
RADIUS	authenticates clients to corporate directory systems

- A. Mastered
- B. Not Mastered

**Answer:** A

**Explanation:**

NFSv2 NFSv4  
 Kerberos RADIUS

#### NEW QUESTION 68

When deploying a Cisco HyperFlex edge with a pair of switches, what is the minimum number of interfaces in trunk mode required on each HX node?

- A. 1
- B. 2
- C. 4
- D. 6

**Answer:** B

#### NEW QUESTION 71

Refer to the exhibit.

```
switch(config)# interface Ethernet 2/2
switch(config)# ip address 172.23.231.240/23
switch(config)# ip verify unicast source reachable-via rx
```

What is configured as a result of running these commands?

- A. reverse lookup for outbound packets
- B. strict unicast RPF
- C. loose unicast RPF
- D. IP Source Guard

**Answer:** B

**Explanation:**

[https://tools.cisco.com/security/center/resources/unicast\\_reverse\\_path\\_forwarding](https://tools.cisco.com/security/center/resources/unicast_reverse_path_forwarding)

The ip verify unicast source reachable-via rx command enables Unicast RPF in strict mode. To enable loose mode, administrators can use the any option to enforce the requirement that the source IP address for a packet must appear in the routing table.

#### NEW QUESTION 76

A network engineer must enable port security on all cisco MDS series switches in the fabric. The requirement is to avoid the extensive manual configuration of the switch ports. Which action must be taken to meet these requirements?

- A. Activate CFS distribution and the auto-learning port security feature.
- B. Activate CFS distribution and file auto-learning port security feature on a per-VSAN basis.
- C. Enable the auto-learning port security feature on a per-VSAN basis.
- D. Enable the auto-learning port security feature.

**Answer:** B

**Explanation:**

You can instruct the switch to automatically learn (auto-learn) the port security configurations over a specified period. This feature allows any switch in the Cisco MDS 9000 Family to automatically learn about devices and switches that connect to it. Use this feature when you activate the port security feature for the first time as it saves tedious manual configuration for each port. You must configure auto-learning on a per-VSAN basis.  
[https://www.cisco.com/en/US/docs/storage/san\\_switches/mds9000/sw/rel\\_3\\_x/configuration/guides/fm\\_3\\_3\\_1/p](https://www.cisco.com/en/US/docs/storage/san_switches/mds9000/sw/rel_3_x/configuration/guides/fm_3_3_1/p)

#### NEW QUESTION 77

Multiple roles are applied to a user on the Cisco MDS 9000 Series Switch. Which statement is true?

- A. Any commands that have conflicting settings between roles are denied.
- B. Access to a command takes priority over being denied access to a command.
- C. The first role assigned takes precedence over subsequent roles.
- D. The last role assigned takes precedence over previous roles.

**Answer:** B

#### Explanation:

Graphical user interface, text, application Description automatically generated



**Note** If you belong to **multiple roles**, you can execute a union of all the commands permitted by these roles. Access to a command takes priority over being **denied access** to a command. For example, suppose you belong to a TechDocs group and you were denied access to configuration commands. However, you also belong to the engineering group and have access to configuration commands. In this case, you will have access to configuration commands.

[https://www.cisco.com/c/en/us/td/docs/switches/datacenter/mds9000/sw/5\\_0/configuration/guides/sec/nxos/sec/clicfgur.html](https://www.cisco.com/c/en/us/td/docs/switches/datacenter/mds9000/sw/5_0/configuration/guides/sec/nxos/sec/clicfgur.html)  
[https://www.cisco.com/c/en/us/td/docs/switches/datacenter/mds9000/sw/8\\_x/config/security/cisco\\_mds9000\\_security\\_config\\_guide\\_8x/configuring\\_users\\_and\\_common\\_roles.html](https://www.cisco.com/c/en/us/td/docs/switches/datacenter/mds9000/sw/8_x/config/security/cisco_mds9000_security_config_guide_8x/configuring_users_and_common_roles.html)

#### NEW QUESTION 79

Drag and drop the network assurance concepts from the left onto the corresponding benefits on the right.

Cisco Tetration	allows close to real-time data monitoring
Data Management Engine	confirms that the network operates consistently with business requirements
Cisco Network Assurance Engine	offers overall protection and enables analysis of the network in real time to identify security incidents faster
Streaming Telemetry	allows the characteristics to be presented as object properties

- A. Mastered
- B. Not Mastered

**Answer:** A

#### Explanation:

Diagram Description automatically generated

#### NEW QUESTION 84

An engineer is duplicating an existing Cisco UCS setup at a new site. What are two characteristics of a logical configuration backup of a Cisco UCS Manager database? (Choose two.)

- A. contains the AAA and RBAC configurations
- B. contains a file with an extension.tgz that stores all of the configurations
- C. contains the configuration organizations and locales
- D. contains all of the configurations
- E. contains the VLAN and VSAN configurations

**Answer:** CE

#### Explanation:

Logical configuration—An XML file that includes all logical configuration settings such as service profiles, VLANs, VSANs, pools, and policies. You can use the file generated from this backup to import these configuration settings to the original fabric interconnect or to a different fabric interconnect. You cannot use this file for a system restore.

**NEW QUESTION 86**

Refer to the exhibit.

```
Nexus# show vpc peer-keepalive | i Keepalive
--Keepalive interval : 1000 msec
--Keepalive timeout : 5 seconds
--Keepalive hold timeout : 3 seconds
--Keepalive vrf : management
--Keepalive udp port : 3200
--Keepalive tos : 192

Nexus# ethanalyzer local interface mgmt limit-captured-frames 1000

Capturing on mgmt0
2019-06-15 12:01:51.242597 192.168.254.11 -> 192.168.254.3 ICMP Echo (ping) request
2019-06-15 12:01:51.242860 192.168.254.3 -> 192.168.254.11 ICMP Echo (ping) reply
2019-06-15 11:50:15.975474 192.168.254.1 -> 192.168.254.3 TCP 47540 > bootps [SYN] Seq=0 Win=1024 Len=0 MSS=1460
2019-06-15 11:50:15.975547 192.168.254.3 -> 192.168.254.1 TCP 29 > 47540 [RST, A CK] Seq=1 Ack=1 Win=0 Len=0
2019-06-15 11:50:15.975564 192.168.254.1 -> 192.168.254.3 TCP 47540 > 44 [SYN] Seq=0 Win=1024 Len=0 MSS=1460
2019-06-15 11:50:15.975924 192.168.254.1 -> 192.168.254.3 TCP 47540 > discard [SYN] Seq=0 Win=1024 Len=0 MSS=1460
2019-06-15 11:50:15.976027 192.168.254.1 -> 192.168.254.3 TCP 47540 > 97 [SYN] Seq=0 Win=1024 Len=0 MSS=1460
2019-06-15 11:50:15.976381 192.168.254.1 -> 192.168.254.3 TCP 47540 > 35 [SYN] Seq=0 Win=1024 Len=0 MSS=1460
2019-06-15 11:50:16.661845 192.168.254.3 -> 192.168.254.4 UDP Source port: 3200 Destination port: 3200
2019-06-15 11:50:16.761147 00:8e:73:a2:41:13 -> 01:80:c2:00:00:00 STP Conf. Root = 8192/10/ec:e1:a9:df:6c:80 Cost = 22 Port = 0x8013
2019-06-15 11:50:16.853248 192.168.254.4 -> 192.168.254.3 UDP Source port: 3200 Destination port: 3200
2019-06-15 11:50:17.326253 192.168.254.1 -> 192.168.254.3 SSH Encrypted request packet len=52
2019-06-15 11:50:17.327313 192.168.254.3 -> 192.168.254.1 SSH Encrypted response packet len=1348
2019-06-15 11:50:17.377246 192.168.254.4 -> 239.255.70.83 UDP Source port: 7546 Destination port: 7546
2019-06-15 11:50:17.552215 192.168.254.1 -> 192.168.254.3 TCP 14139 > ssh [ACK] Seq=365 Ack=11277 Win=63546 Len=0
2019-06-15 11:50:17.661764 192.168.254.3 -> 192.168.254.4 UDP Source port: 3200 Destination port: 3200
2019-06-15 11:50:17.653242 192.168.254.4 -> 192.168.254.3 UDP Source port: 3200 Destination port: 3200
2019-06-15 11:50:17.872637 8c:60:4f:aa:c2:e1 -> 01:80:e7:00:00:0e LLDP Chassis : d = 8c:60:41:aa:c2:e1 Port Id = mgmt0 TTL = 120
2019-06-15 11:50:08.173056 192.168.256.3 -> 192.168.254.2 NTP NTP client
2019-06-15 11:50:08.173256 192.168.256.2 -> 192.168.254.3 NTP NTP server
```

A flapping link issue has been reported on the vPC keepalive link. A packet capture has been activated on the Cisco Nexus switch. What is the destination IP address of the vPC keepalive packets that are sent by the switch?

- A. 192.168.254.4
- B. 239.255.70.83
- C. 192.168.254.1
- D. 192.168.254.2

**Answer:** A

**Explanation:**

<https://www.cisco.com/c/en/us/td/docs/switches/datacenter/nexus3000/sw/interfaces/92x/b-cisco-nexus-3000-nx>

**NEW QUESTION 91**

An engineer must configure SAN connectivity in Cisco UCS manager. The requirement is to specify the WWPN of the storage array and set the zoning type to single initiator multiple targets. The engineer must also configure interrupt handling and queues of the vHBA interface. Which two Cisco UCS policies should be used to configure the settings? (Choose two.)

- A. storage connection policy
- B. SAN connectivity policy
- C. vHBA policy
- D. Fibre Channel adaptor policy
- E. boot policy

**Answer:** AD

**NEW QUESTION 92**

A cisco Nexus 9000 series switch experiences a startup configuration corruption. The engineer must implement a procedure to recover configuration file from the switch. Which command set must be used?

- A. \* 1. Copy the running-configuration to the startup configuration.\* 2. Clear the current configuration of the switch.\* 3. Restart the device.\* 4. Copy a previously saved configuration file to the running configuration.
- B. \* 1. Clear the current configuration of the switch\* 2. Restart the device.\* 3. Copy the running configuration to the startup configuration\* 4. Copy a previously saved configuration file to the running configuration
- C. \* 1. Clear the current configuration of the switch\* 2. Restart the device.\* 3. Copy a previously saved configuration file to the running-configuration\* 4. Copy the running-configuration to the startup configuration.
- D. \* 1.Restarting device.\* 2. Copy the running-configuration file to a remote server.\* 3. Clear the current configuration of the switch.\* 4. Copy the running configuration to the startup configuration

**Answer:** C

**Explanation:**

Problems, such as memory corruption, can occur that make it necessary for you to recover your configuration from a backed-up version.

Each time that you enter a copy running-config startup-config command, a binary file is created and the ASCII file is updated. A valid binary configuration file



reduces the overall boot time significantly. A binary file cannot be uploaded, but its contents can be used to overwrite the existing startup configuration. The write erase command clears the binary file.

#### SUMMARY STEPS

- \* 1. write erase
- \* 2. reload
- \* 3. copy configuration-file running-configuration
- \* 4. copy running-config startup-config <https://www.cisco.com/c/en/us/td/docs/switches/datacenter/nexus9000/sw/93x/fundamentals/configuration/guide>

#### NEW QUESTION 94

A network engineer must prevent data corruption due to cross fabric communication in an FCoE environment. Which configuration must be applied to the Cisco Nexus Unified Switches to achieve this objective?

- A. Switch(config)#fcoe fcmmap 0e,fc,2a
- B. Switch(config-if)# no fcoe fcf-priority 0
- C. Switch(config-if) # shutdown lan
- D. Switch(config) # no fcoe fcf-priority

Answer: A

#### Explanation:



2. switch(config)# fcoe fcmmap fabric-map

3. (Optional) switch(config)# no fcoe fcmmap fabric-map

#### DETAILED STEPS

	Command or Action	Purpose
Step 1	switch# configure terminal	Enters configuration mode.
Step 2	switch(config)# fcoe fcmmap fabric-map	Configures the global FC-Map. The default value is 0E.FC.00. The range is from 0E.FC.00 to 0E.FC.FF.
Step 3	switch(config)# no fcoe fcmmap fabric-map	(Optional) Resets the global FC-Map to the default value of 0E.FC.00.

This example shows how to configure the global FC-Map:

```
switch# configure terminal

switch(config)# fcoe fcmmap 0e.fc.2a
```

[https://www.cisco.com/c/en/us/td/docs/switches/datacenter/nexus5000/sw/fcoe/b\\_Cisco\\_Nexus\\_5000\\_Series\\_NX-OS\\_Fibre\\_Channel\\_over\\_Ethernet\\_Configuration\\_Guide/Cisco\\_Nexus\\_5000\\_Series\\_NX-OS\\_Fibre\\_Channel\\_over\\_Ethernet\\_Configuration\\_Guide\\_chapter3.html](https://www.cisco.com/c/en/us/td/docs/switches/datacenter/nexus5000/sw/fcoe/b_Cisco_Nexus_5000_Series_NX-OS_Fibre_Channel_over_Ethernet_Configuration_Guide/Cisco_Nexus_5000_Series_NX-OS_Fibre_Channel_over_Ethernet_Configuration_Guide_chapter3.html)  
You can prevent data corruption due to cross-fabric talk by configuring an FC-Map that identifies the Fibre Channel fabric for this Cisco Nexus device. When the FC-Map is configured, the switch discards the MAC addresses that are not part of the current fabric.  
switch(config)# fcoe fcmmap fabric-map Configures the global FC-Map. The default value is 0E.FC.00. The range is from 0E.FC.00 to 0E.FC.FF.  
[https://www.cisco.com/c/en/us/td/docs/switches/datacenter/nexus5000/sw/fcoe/513\\_n1\\_1/b\\_Cisco\\_n5k\\_fcoe\\_co](https://www.cisco.com/c/en/us/td/docs/switches/datacenter/nexus5000/sw/fcoe/513_n1_1/b_Cisco_n5k_fcoe_co)

#### NEW QUESTION 98

A customer deploys a media server to distribute streaming videos to network clients. The requirement is to allow the video feed to reach only requesting clients. The shared trees must not propagate the video feed if no clients from that tree request it. To reduce configuration touchpoints, the solution must support the automatic discovery and announcement of RP-set information. Each router in the network is responsible for selecting the RP. Which configuration set meets these requirements?

A)

```
router(config-if)# ip pim bidir-enable
router(config)# ip pim ssm default
router(config)# ip igmp version 3
```

B)

```
router(config-if)# ip pim dense-mode
router(config)# ip pim rp-address 1.1.1.1
router(config)# ip pim rp listener
```

C)

```
router(config-if)# ip pim sparse mode
router(config)# ip pim bsr-candidate Lo0
router(config)# ip pim rp-candidate Lo0
```

D)



```
router(config-if)# ip pim sparse-sense mode
router(config)# ip pim auto-rp
router(config)# ip pim send-rp-announce
```

- A. Option A
- B. Option B
- C. Option C
- D. Option D

**Answer:** D

#### NEW QUESTION 101

An engineer needs to connect Cisco UCS Manager to an external storage array. Due to budget limitations, the engineer must connect a Cisco UCS manager directly to an FC storage port. Which two actions must be taken to complete this connection? (Choose two)

- A. Configure the fabric interconnect in FC switch mode
- B. Create a storage connection policy
- C. Set FC zoning to disabled when creating the VSAN
- D. Configure the fabric interconnect in end host mode
- E. Create the required VSAN in the SAN cloud

**Answer:** AC

#### NEW QUESTION 103

An engineer must implement a VXLAN-based data center interconnect. The long-distance transport provided by a service provider is IP-based, supports a maximum MTU of 1554 bytes, and does not support outbound traffic replication. Which action must be taken to build the data center interconnect?

- A. Configure a route map to associate the IPs of the remote VTEPs.
- B. Create an IP access list and associate it with VNI to replicate traffic to remote VTEPs.
- C. Announce host reachability over BGP.
- D. Implement BGP EVPN ingress replication.

**Answer:** D

#### NEW QUESTION 105

A network engineer must deploy a configuration backup policy to the Cisco UCS Manager. The file generated from this backup must have a snapshot of the entire system that should be used to restore the system during disaster recovery. The backup file must be transferred insecurely by using the TCP protocol. Which configuration backup settings meet these requirements?

- A. Type: All Configuration Protocol: SCP
- B. Type: Logical Configuration Protocol: SFTP
- C. Type: Full State Protocol: FTP
- D. Type: System Configuration Protocol: TFTP

**Answer:** C

#### NEW QUESTION 106

A customer has a requirement for an automation solution that supports periodically acquiring configuration from a centralized server and aligning UCS servers to their desired state. Which open-source tool meets these requirements?

- A. SaltStack
- B. Terraform
- C. Puppet
- D. Kubernetes

**Answer:** C

#### Explanation:

"Overview of Puppet architecture: [...] After it receives a catalog, the Puppet agent applies the catalog by checking each resource that the catalog describes. If it finds any resources that are not in their desired state, it makes any changes necessary to correct them."

[https://www.cisco.com/c/dam/en/us/products/collateral/servers-unified-computing/ucs-c-series-rackservers/whitepaper\\_c11-740103.pdf](https://www.cisco.com/c/dam/en/us/products/collateral/servers-unified-computing/ucs-c-series-rackservers/whitepaper_c11-740103.pdf)

<https://www.cisco.com/c/dam/en/us/products/collateral/servers-unified-computing/ucs-devops-integration-sol-br>

from DCCOR book under Puppet section The operation of the Puppet agent involves periodically connecting to the Puppet master, which in turn compiles and sends a configuration manifest to the agent. The agent reconciles this manifest with the current state of the node and updates state that is based on differences.

#### NEW QUESTION 111

Which two statements describe the process of upgrading an EPLD on a Cisco MUS 9000 Series Switch? (Choose two)

- A. EPLDs are capable to be upgraded without replacing the hardware
- B. The CPLDs for all the modules on a switch must be upgraded at the same time
- C. An upgrade verification identifies the impact of each EPLD upgrade
- D. EPLDs are only capable to be upgraded to the latest F
- E. D image
- F. EPLD upgrades are capable to be completed without powering down the module during the upgrade

visit - <https://www.surepassexam.com>

```
switch1#show run interface Vlan 10

interface Vlan10
  description Service Datacenter-Rack-A
  ip address 209.165.200.225 255.255.255.224
!
end

switch1#
```

An engineer must mirror the traffic on a switch. The engineer locates the server port that requires monitoring on switch1, but the packet sniffer is on switch2. The engineer must configure the source IP address on switch1. Which command accomplishes this goal?

- A. monitor session 10 type erspan-source
- B. monitor erspan origin ip-address 209.165.200.225
- C. source ip 209.165.200.225
- D. source interface vbn512

**Answer: B**

#### NEW QUESTION 122

An engineer needs to monitor ingress traffic that arrives at interface Ethernet 1/3 that belongs to a Cisco Nexus 5600 Series Switch. The traffic analyzer machine located at interface Ethernet 1/5 is already monitoring other production, and the traffic analyzer must not be impacted by the traffic captured from the interface Eth1/3. The operations team allocated a traffic budget for the new monitoring session of 1 Gbps to meet this requirement. Which set of commands configures the SPAN session?

- ☒ interface Ethernet 1/3  
switchport monitor rate-limit 1G  
  
monitor session 2  
destination interface ethernet 1/5  
source interface Eth 1/3
- ☐ interface Ethernet 1/3 rx  
switchport mode SD  
switchport monitor rate-limit 1G  
monitor session2  
destination interface ethernet 1/5
- ☐ interface Ethernet 1/3  
monitor rate-limit 1G  
destination interface ethernet 1/5  
source interface rx  
  
interface Ethernet 1/5  
monitor session 2  
destination interface tx
- ☐ interface Ethernet 1/3  
monitor session 2  
destination interface ethernet 1/5  
source interface rx  
  
interface Ethernet 1/5  
monitor rate-limit 1G

- A. Option A
- B. Option B
- C. Option C
- D. Option D

**Answer: A**

**Explanation:**

Find Matches in This Book

	<code>switch(config)# interface ethernet slot/port</code>	Enters interface configuration mode for the specified Ethernet interface selected by the slot and port values.
Step 3	<code>switch(config-if)# switchport monitor rate-limit 1G</code>	Specifies that the rate limit is 1 Gbps.
Step 4	<code>switch(config-if)# exit</code>	Reverts to global configuration mode.

**Example**

This example shows how to limit the bandwidth on Ethernet interface 1/2 to 1 Gbps:

```
switch(config)# interface ethernet 1/2
switch(config-if)# switchport monitor rate-limit 1G
switch(config-if)#
```

### Configuring Source Ports

**Procedure**

	Command or Action	Purpose
Step 1	<code>switch# configure terminal</code>	Enters global configuration mode.
Step 2	<code>switch(config) # monitor session session-number</code>	Enters monitor configuration mode for the specified monitoring session.
Step 3	<code>switch(config-monitor) # source interface type slot/port [rx   tx   both]</code>	Adds an Ethernet SPAN source port and specifies the traffic direction in which to duplicate packets. You can enter a range of Ethernet, Fibre Channel, or virtual Fibre Channel ports. You can specify the traffic direction to duplicate as ingress (Rx), egress (Tx), or both. By default, the direction is both.

[https://www.cisco.com/c/en/us/td/docs/switches/datacenter/nexus5600/sw/system\\_management/7x/b\\_5600\\_System\\_Mgmt\\_Config\\_7x/configuring\\_span.html](https://www.cisco.com/c/en/us/td/docs/switches/datacenter/nexus5600/sw/system_management/7x/b_5600_System_Mgmt_Config_7x/configuring_span.html)

#### NEW QUESTION 126

Which component is disrupted when the cisco integrated Management controller is upgraded on a cisco UCS series server?

- A. Cisco UCS Manager
- B. SAN traffic
- C. KVM sessions
- D. Data traffic

**Answer: C**

#### NEW QUESTION 129

An engineer updated firmware on Fabric Interconnects and activates it. However, the endpoint fails to boot from the new firmware image. What is expected to occur in this case?

- A. The system defaults to the backup image version
- B. The system defaults to and boots into GOLD firmware image
- C. The system defaults to the GOLD firmware image
- D. The system defaults to and boots into kickstart image

**Answer: A**

#### Explanation:

[https://www.cisco.com/c/en/us/td/docs/unified\\_computing/ucs/ucs-manager/CLI-User-Guides/Firmware-Mgmt/4-0/b\\_UCSM\\_CLI\\_Firmware\\_Management\\_Guide\\_4-0/b\\_UCSM\\_CLI\\_Firmware\\_Management\\_Guide\\_4-0\\_chapter\\_011.html](https://www.cisco.com/c/en/us/td/docs/unified_computing/ucs/ucs-manager/CLI-User-Guides/Firmware-Mgmt/4-0/b_UCSM_CLI_Firmware_Management_Guide_4-0/b_UCSM_CLI_Firmware_Management_Guide_4-0_chapter_011.html)

#### NEW QUESTION 130

Which command reduces the amount of time it takes to complete the ISSU on a Cisco Nexus 7000 series switch that has dual supervisor modules and two I/O modules?

- A. install all kickstart <image>system<image>parallel
- B. install all epld bootflash:<image>
- C. install all epld bootflash:<image>
- D. install all kickstart<image>system<image>

**Answer: A**

#### Explanation:

Graphical user interface, text, application Description automatically generated



## Parallel Upgrade

### Parallel Upgrade with I/O Modules

Starting with Cisco NX-OS Release 5.2(1), multiple linecards can be simultaneously upgraded, and the infrastructure support is available. This decreases the ISSU time when compared with an ISSU upgrade that is done serially (one card at a time).

To start a parallel upgrade, use the following command: **install all kickstart image system image parallel**

Up to three linecards can be upgraded in parallel with this command. During the upgrade process, the upgrade of the linecards is displayed in the output as follows:

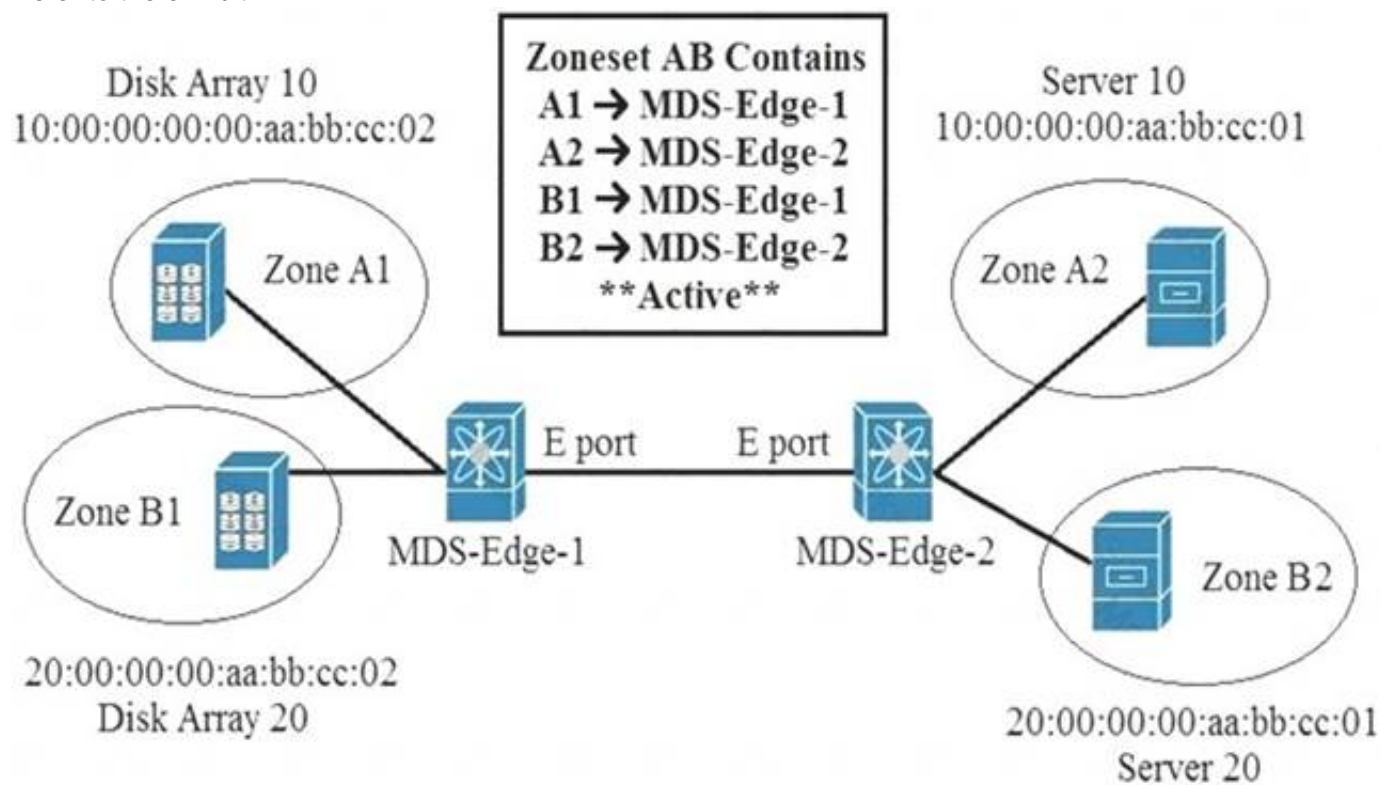
```
Non-disruptive upgrading.
[#          ] 0%
Module 5 upgrade completed successfully.

Module 3 upgrade completed successfully.
```

[https://www.cisco.com/c/en/us/td/docs/switches/datacenter/nexus7000/sw/upgrade/guide/cisco\\_nexus7000\\_software\\_upgrade\\_and\\_downgrade\\_guide\\_8x.html](https://www.cisco.com/c/en/us/td/docs/switches/datacenter/nexus7000/sw/upgrade/guide/cisco_nexus7000_software_upgrade_and_downgrade_guide_8x.html)  
[https://www.cisco.com/c/en/us/td/docs/switches/datacenter/sw/7\\_x/nx-os/upgrade/guide/b\\_Cisco\\_Nexus\\_7000\\_Series\\_NX-OS\\_Software\\_Upgrade\\_and\\_Downgrade\\_Guide\\_Release\\_7-x.html#d54e307a1635](https://www.cisco.com/c/en/us/td/docs/switches/datacenter/sw/7_x/nx-os/upgrade/guide/b_Cisco_Nexus_7000_Series_NX-OS_Software_Upgrade_and_Downgrade_Guide_Release_7-x.html#d54e307a1635)

## NEW QUESTION 135

Refer to the exhibit.



An engineer is implementing zoning on two Cisco MDS switches. After the implementation is finished, E Ports that connect the two Cisco MDS switches becomes isolated. What is wrong with the implementation?

- A. E Ports on both MDS switches must be configured as F ports for the zoning to function.
- B. Zones are local to the MDS switch and name service must be used to activate the connection between E ports.
- C. Different zone set names must be configured on both MDS switches.
- D. Zones must have the same name on both MDS switches for the E ports to function.

**Answer: D**

### Explanation:

When two switches in a fabric are merged using a TE or E port, these TE and E ports may become isolated when the active zone set databases are different between the two switches or fabrics." [https://www.cisco.com/c/en/us/td/docs/switches/datacenter/mds9000/sw/6\\_2/configuration/guides/fabric/nxos/n](https://www.cisco.com/c/en/us/td/docs/switches/datacenter/mds9000/sw/6_2/configuration/guides/fabric/nxos/n)

## NEW QUESTION 137

What is required for using Ansible with HTTP/HTTPS protocol in a Cisco NX-OS environment?

- A. SSH
- B. Open Agent Container
- C. XML management interface
- D. NX-API

**Answer: D**

### Explanation:

[https://docs.ansible.com/ansible/2.5/modules/nxos\\_nxapi\\_module.html](https://docs.ansible.com/ansible/2.5/modules/nxos_nxapi_module.html) [https://docs.ansible.com/ansible/latest/network/user\\_guide/platform\\_nxos.html](https://docs.ansible.com/ansible/latest/network/user_guide/platform_nxos.html)

## NEW QUESTION 142

The Cisco Nexus 5600 Series Switch experiences occasional packet drops on interface ethernet 1/16. An engineer wants to implement a SPAN session to investigate the issue further. The network analyzer to which the packets must be directed is located on interface 1/3. The analyzer is limited on disk space available for traffic capture, so the Nexus switch should send only the relevant data. Which two command sets configure the SPAN session that meets these requirements? (Choose two.)

- ☒ interface ethernet 1/3  
switchport monitor
- ☐ monitor session 2  
destination interface ethernet 1/3  
span interface ethernet 1/16
- ☐ interface ethernet 1/3  
switchport span
- ☒ span session 2  
type SPAN-on-DROP  
destination interface ethernet 1/3  
source interface ethernet 1/16
- ☒ monitor session 2 type SPAN-on-DROP  
destination interface ethernet 1/3  
source interface ethernet 1/16

- A. Option A
- B. Option B
- C. Option C
- D. Option D
- E. Option E

**Answer:** AE

**Explanation:**

<https://www.cisco.com/c/en/us/products/collateral/switches/nexus-5000-series-switches/white-paper-c11-73302> The information to be sent is regarding dropped packets only.

This configuration creates a SPAN session with type SPAN-on-DROP. In the following example, the source interface, where congestion may be present, is port e3/1. The destination port is e3/2, which must be in switchport monitor mode

```
switch(config)# monitor session <session_number> type SPAN-on-DROP
switch(config-SPAN-on-DROP)# source interface e3/1
switch(config-SPAN-on-DROP)# destination interface e3/2
```

**NEW QUESTION 146**

A DNS server with IP address 192.168.1.1 is deployed in a data center A network engineer must configure a Cisco UCS Fabric Interconnect to use this DNS. Which configuration should be applied?

- ☒ **ficl-mgmt-A# scope system**  
ficl-mgmt-A /system # create dns 192.168.1.1  
ficl-mgmt-A /system\* # commit-buffer
- ☐ **ficl-mgmt-A# scope fabric-interconnect a**  
ficl-mgmt-A /fabric-interconnect # set name 192.168.1.1  
ficl-mgmt-A /fabric-interconnect # scope system  
ficl-mgmt-A /system # commit-buffer
- ☐ **ficl-mgmt-A# scope fabric-interconnect a**  
ficl-mgmt-A /fabric-interconnect # set name 192.168.1.1  
ficl-mgmt-A /fabric-interconnect\* # commit-buffer
- ☐ **ficl-mgmt-A# scope system**  
ficl-mgmt-A /system # scope services  
ficl-mgmt-A /system/services # create dns 192.168.1.1  
ficl-mgmt-A /system/services\* # commit-buffer

- A. Option A
- B. Option B
- C. Option C
- D. Option D

**Answer:** D

**NEW QUESTION 147**

AN engineer is asked to modify an overridden policy by changing the number of FCNS database entries to 1500 and then generable a massage. What configuration will accomplish this task?

- A. event manager applet fcns\_policy event fcns entries max-per-switch 1500  
action 1.0 syslog priority warnings msg FCNS DB entries have reached the EEM limit  
action 2.0 policy-default
- B. event manager applet fcns\_policy override \_fcns\_entries\_max\_per\_switch  
action 1.0 syslog priority errors "CNS DB entries have reached the EEM limit"  
action 2.0 policy-default
- C. event manager applet fcns\_policy override \_fcns\_entries\_max\_per\_switch  
event fcns entries max-per-switch 1500  
action 1.0 syslog priority warnings msg FCNS DB entries have reached the EEM limit
- D. event manager applet fcns\_policy action 1.0 syslog priority warnings msg FCNS DB entries have reached the EEM limit  
action 2.0 event-default

- A. Option A
- B. Option B
- C. Option C
- D. Option D

**Answer:** C

**Explanation:**

The following example modifies an overridden policy by changing the number of FCNS database entries to 1500. It also generates both the configured and the default syslog messages of the default system policy event manager applet fcns\_policy override fcns\_entries\_max\_per\_switch  
event fcns entries max-per-switch 1500 action 1.0 syslog priority warnings msg FCNS DB entries have reached the EEM limit.

**NEW QUESTION 148**

Which two actions should be performed before upgrading the infrastructure and firmware of multiple UCS blades? (Choose two)

- A. Verify if the bootflash on the fabric interconnects in the Cisco UCS has at least 15% available space
- B. Enable Smart Call Home feature during the firmware upgrade process
- C. Verify if the bootflash on the fabric interconnects in the Cisco UCS has at least 10% available space
- D. Run the Check Conformance feature to verify that all your components are running the compatible firmware version after the upgrade
- E. Get Full State and All Configuration backup files before beginning the upgrade

**Answer:** DE

**NEW QUESTION 151**

What is a benefit of using Cisco Tetration?

- A. It collects telemetry data from servers and then uses software sensors to analyze flow information.
- B. It collects near-real time data from servers and inventories the software packages that exist on servers.
- C. It collects policy compliance data and process details.
- D. It collects enforcement data from servers and collects interpacket variation.

**Answer:** A

**NEW QUESTION 152**

Refer to the exhibit.

```
OTV-Site1# show otv
OTV Overlay Information
Site Identifier 0000.0000.0111
Overlay interface Overlay200
VPN name: Overlay200
VPN state: UP
Extended vlans: 178 2500-2563 (Total:65)
Join interface(s): Eth1/2 (20.1.1.1)
Site vlan: 1999 (up)
AED-Capable: Yes
Capability: Unicast-Only
Is Adjacency Server: Yes
Adjacency Server(s): 20.1.1.1/20.2.1.1
```



A network engineer is setting up a multihomed OTV network. The first site has been set up with a primary and secondary adjacency server. Which configuration must be added on the remote OTV AEDs site?

- A. interface Overlay200otv join-interface Ethernet1/2 otv extend-vlan 178, 2500-2563otv use-adjacency-server 20.1.1.1 unicast-only
- B. interface Overlay200otv join-interface Ethernet1/2 otv extend-vlan 178, 2500-2563otv adjacency-server unicast-only
- C. interface Overlay200otv join-interface Ethernet1/2 otv extend-vlan 178, 2500-2563
- D. interface Overlay200otv join-interface Ethernet1/2 otv extend-vlan 178, 2500-2563otv use-adjacency-server 20.1.1.1 20.2.1.1 unicast-only

**Answer: D**

#### NEW QUESTION 156

Refer to the exhibit.

```
N7K-1
spanning-tree vlan 1-10 priority 8192

vpc domain 100
  role priority 100
  peer-keepalive destination 10.1.1.2 source 10.1.1.1
vrf default
  delay restore 60
  peer-switch
  auto-recovery
  ip arp synchronize

N7K-2
spanning-tree vlan 1-10 priority 8192

vpc domain 100
  role priority 200
  peer-keepalive destination 10.1.1.1 source 10.1.1.2
vrf default
  delay restore 60
  peer-switch
  auto-recovery
  ip arp synchronize
```

The STP priority of N7K-1 and N7K-2 are the lowest in the network. Which statement describes STP on the vPC?

- A. N7K-1 appears as the STP root.
- B. N7K-2 appears as the STP root.
- C. N7K-1 and N7K-2 appear as a single STP root.
- D. N7K-1 preempts N7K-2 as the STP root.

**Answer: C**

#### NEW QUESTION 160

Refer to the exhibit.

```
show install all impact epld bootflash:n9000-epld.6.1.2.I3.1.img
```

What is the outcome of this command when the EPLD is updated on a Cisco Nexus 9000 series switch?

- A. displays the compatibility of the EPLD upgrade and the image in the bootflash
- B. shows a simulated upgrade of the EPLD
- C. upgrades the EPLD on the switch disruptively
- D. displays the impact of the upgrade on the operation of the switch

**Answer: D**

#### Explanation:

You can use the show install impact epld bootflash: command to determine whether the EPLDs can be upgraded for all the modules or for specific modules on a switch. This command indicates the current EPLD images, new EPLD images, and whether the upgrades would be disruptive to switch operations. <https://www.cisco.com/c/en/us/td/docs/switches/datacenter/nexus9000/sw/6-x/epld/n9k-epld-rn-61.html>

#### NEW QUESTION 163

An engineer must migrate a Cisco UCS C-Series server from Cisco SingleConnect to direct integration mode. The Cisco UCS Manager Rack Server Discovery Policy and Rack Management Connection Policy are set to immediate and Auto-Acknowledge. Which set of steps accomplishes this task?



- ☒ Disconnect the cables from the FEX.  
Connect the cables to appliance ports on the fabric interconnect.  
Reset the Cisco IMC of the server.
- ☐ Disconnect the cables from the FEX.  
Connect the cables to server ports on the fabric interconnect.  
Reset the Cisco IMC of the server.
- ☐ Disconnect the cables from the FEX.  
Connect the cables to appliance ports on the fabric interconnect.  
Reacknowledge the server.
- ☐ Disconnect the cables from the FEX.  
Connect the cables to server ports on the fabric interconnect.  
Reacknowledge the server.

- A. Option A  
B. Option B  
C. Option C  
D. Option D

Answer: D

NEW QUESTION 164

A customer reports Fibre Channel login requests to a cisco MDS 9000 series Switch from an unauthorized source. The customer requires a feature that will allow all devices already logged in and learned in and learned to be added to the Fibre channel active database. Which two features must be enabled to accomplish this goal?  
(Choose two.)

- A. Auto-learning  
B. Port security  
C. Enhanced zoning  
D. Device aliases  
E. Smart aliases

Answer: AB

Explanation:

[https://www.cisco.com/en/US/docs/storage/san\\_switches/mds9000/sw/rel\\_3\\_x/configuration/guides/fm\\_3\\_3\\_1/p](https://www.cisco.com/en/US/docs/storage/san_switches/mds9000/sw/rel_3_x/configuration/guides/fm_3_3_1/p) Port Security Activation By default, the port security feature is not activated in any switch in the Cisco MDS 9000 Family. By activating the port security feature, the following apply: Auto-learning is also automatically enabled, which means: From this point, auto-learning happens for the devices or interfaces that were already logged into the switch and also for the new devices will login in future. You cannot activate the database until you disable auto-learning. All the devices that are already logged in are learned and are added to the active database. All entries in the configured database are copied to the active database. After the database is activated, subsequent device login is subject to the activated port bound WWN pairs, excluding the auto-learned entries. You must disable auto-learning before the auto-learned entries become activated.

NEW QUESTION 169

Which protocol does Cisco Hyperflex use to share data among nodes in a VMware vSphere environment?

- A. CIFS  
B. FCoE  
C. SMB  
D. NFS

Answer: D

NEW QUESTION 172

Drag and drop the characteristics from the left onto the correct storage systems on the right.

expensive and complex to manage

moderately expensive and simple to configure

most resilient, highly scalable, and high-performance storage

appliance providing file system access

lacks scalability, performance, and advanced features

NAS

SAN

- A. Mastered
- B. Not Mastered

**Answer:** A

**Explanation:**

Graphical user interface Description automatically generated with medium confidence  
2,4,5 – NAS 1,3 - SAN

**NEW QUESTION 177**

An engineer requires the Cisco Fabric Services to distribute NTP configuration only to the members within the scope of a VSAN that belongs to a Cisco Unified Network. Which scope distribution must be selected to meet this requirement?

- A. Logical scope
- B. Physical scope
- C. Uncoordinated scope
- D. Coordinated scope

**Answer:** A

**NEW QUESTION 181**

Refer to the exhibit.

```
#!/bin/env python
from cli import *

[REDACTED]

x= cli('show running-config | include address')
y= x.find('192.168.101.191/25')
z= x.find('192.168.101.192/25')
if y != -1:
    cli ('copy tftp://192.168.101.253/initdev1.cfg bootflash: vrf management')
    cli ('copy bootflash:initdev1.cfg scheduled-config')
if z != -1:
    cli ('copy tftp://192.168.101.253/initdev2.cfg bootflash: vrf management')
    cli ('copy bootflash:initdev2.cfg scheduled-config')
cli ('copy running-config startup-config')
```

Which information must be added to the script to complete the POAP operation on the Cisco Nexus 9000 Series Switch?

- ☐ API token d41d8cd98f00b40960045298ecf8427e of the Cisco APIC.
- ☐ MD5SUM 41d8cd98f00b204e9800998ecf8427e of the Python code.
- ☒ API token d41d8cd98f00b77986331998ecf8427e of the Cisco Nexus 9000 Series Switch.
- ☐ MD5SUM d41d8cd98f00b20449800998ecf8427e of the script file.

- A. Option A
- B. Option B
- C. Option C
- D. Option D

**Answer:** D

**NEW QUESTION 184**

An engineer is implementing a Cisco ACI fabric and must use static VLAN range as part of a VMM deployment. The static VLAN must be incorporated into the dynamic VLAN pool. The existing VLAN pool is set for dynamic allocation. Which action accomplishes this goal?

- A. Add the VLAN to the pool configured with Inherit Allocation Mode from parent.
- B. Change the existing VLAN pool to static allocation mode.
- C. Add a static VLAN allocation range to the VLAN pool.
- D. Create a static reservation within the dynamic VLAN pool.

**Answer:** C

**NEW QUESTION 188**

A network architect considers a Cisco HyperFlex design solution for a company. The proposed solution is for a virtual environment that is not performance-sensitive, but the solution must have high storage capacity and a low cost. Which Cisco HyperFlex storage configuration should be used?

- A. All-Flash
- B. Hybrid
- C. All-SAN
- D. All-NVMe

**Answer:** B

**Explanation:**  
<https://www.cisco.com/c/en/us/products/collateral/hyperconverged-infrastructure/hyperflex-hx-series/white-pap> Hybrid contains HDD for capacity.

**NEW QUESTION 191**  
Refer to the exhibit

MDS-B# show role			
Role: network-admin			
Description: Predefined Network Admin group. This role cannot be modified.			
Vsan policy: permit (default)			
-----			
Rule	Type	Command-type	Feature
-----			
1	permit	clear	*
2	permit	config	*
3	permit	debug	*
4	permit	exec	*
5	permit	show	*
Role: default-role			
Description: This is a system defined role and applies to all users.			
Vsan policy: permit (default)			
-----			
Rule	Type	Command-type	Feature
-----			
1	permit	show	system
2	permit	show	snmp
3	permit	show	module
4	permit	show	hardware
5	permit	show	environment
Role: san-users			
Description: SAN users			
Vsan policy: permit (default)			
-----			

A network engineer created a new role to be assigned to the SAN users The requirement is for users to have these characteristics

- permitted to show access to the system, SNMP, module, and hardware information
- permitted to run debug zone and exec fcping commands
- restricted from accessing show feature environment command

Which configuration set meets these requirements?

- A. Option A
- B. Option B
- C. Option C
- D. Option D

**Answer:** D

**NEW QUESTION 194**

Drag and drop the steps on the left onto the order that they must be implemented on the right to recover a fabric interconnect when there is no working image on the bootflash.

Copy the main image files.	step 1
Configure the management interfaces.	step 2
Boot the kickstart image using TFTP.	step 3
Install the files.	step 4

- A. Mastered
- B. Not Mastered

**Answer:** A

**Explanation:**



#### NEW QUESTION 195

What is the impact of an EPLD upgrade on a Cisco MDS 9000 Series Switch?

- A. The active supervisor traffic is disrupted.
- B. The upgrade disrupts the management connectivity to the switch.
- C. The standby supervisor module reloads multiple times.
- D. The upgrade process disrupts only the module that is being upgraded.

**Answer: D**

#### NEW QUESTION 196

An engineer configures a role for a new user in Cisco UCS Manager. The role should allow the user to configure vHBAs, vNICs, and server port types. Which role should be assigned to allow the engineer to complete this task?

- A. network administrator
- B. operations
- C. server-compute
- D. AAA administrator

**Answer: A**

#### NEW QUESTION 201

An engineer must implement private VLANs for a group of Cisco UCS 8-Series servers. The primary VLAN is present, But the secondary VLAN must Be added to Both fabrics. Which configuration set accomplishes this task?

- ☒ UCS-A# scope eth-uplink  
 UCS-A /eth-uplink # create vlan vlan1981 1981  
 UCS-A /eth-uplink/vlan\* # set sharing none
- ☐ UCS-A# scope eth-uplink  
 UCS-A /eth-uplink # create vlan vlan1981 1981  
 UCS-A /eth-uplink/vlan\* # set sharing isolated
- ☐ UCS-A# scope eth-uplink  
 UCS-A /eth-uplink # scope fabric a  
 UCS-A /eth-uplink/fabric # create vlan vlan1981 1981  
 UCS-A /eth-uplink/fabric/vlan\* # set sharing private
- ☐ UCS-A# scope eth-uplink  
 UCS-A /eth-uplink # scope fabric a  
 UCS-A /eth-uplink/fabric # create vlan vlan1981 1981  
 UCS-A /eth-uplink/fabric/vlan\* # set sharing secondary

- A. Option A
- B. Option B
- C. Option C
- D. Option D

**Answer: B**

#### NEW QUESTION 204

Refer to the exhibit.



```
switch# show vpc brief
Legend:
      (*) - local vPC is down, forwarding via vPC peer-link

vPC domain id          : 10
Peer status             : peer adjacency formed ok
vPC keep-alive status   : peer is alive
Configuration consistency status: success
Type-2 consistency status : success
vPC role                 : primary
Number of vPCs configured : 1
Peer Gateway             : Enabled
Dual-active excluded VLANs : -

vPC Peer-link status
-----
id  Port  Status Active vlans
--  --
1   Po20  up    100-105

vPC status
-----
id  Port  Status Consistency Reason          Active vlans
--  --
7   Po7   up    success success          100-104
8   Po8   up    success success          100-102
9   Po9   up    success success          100-103
```

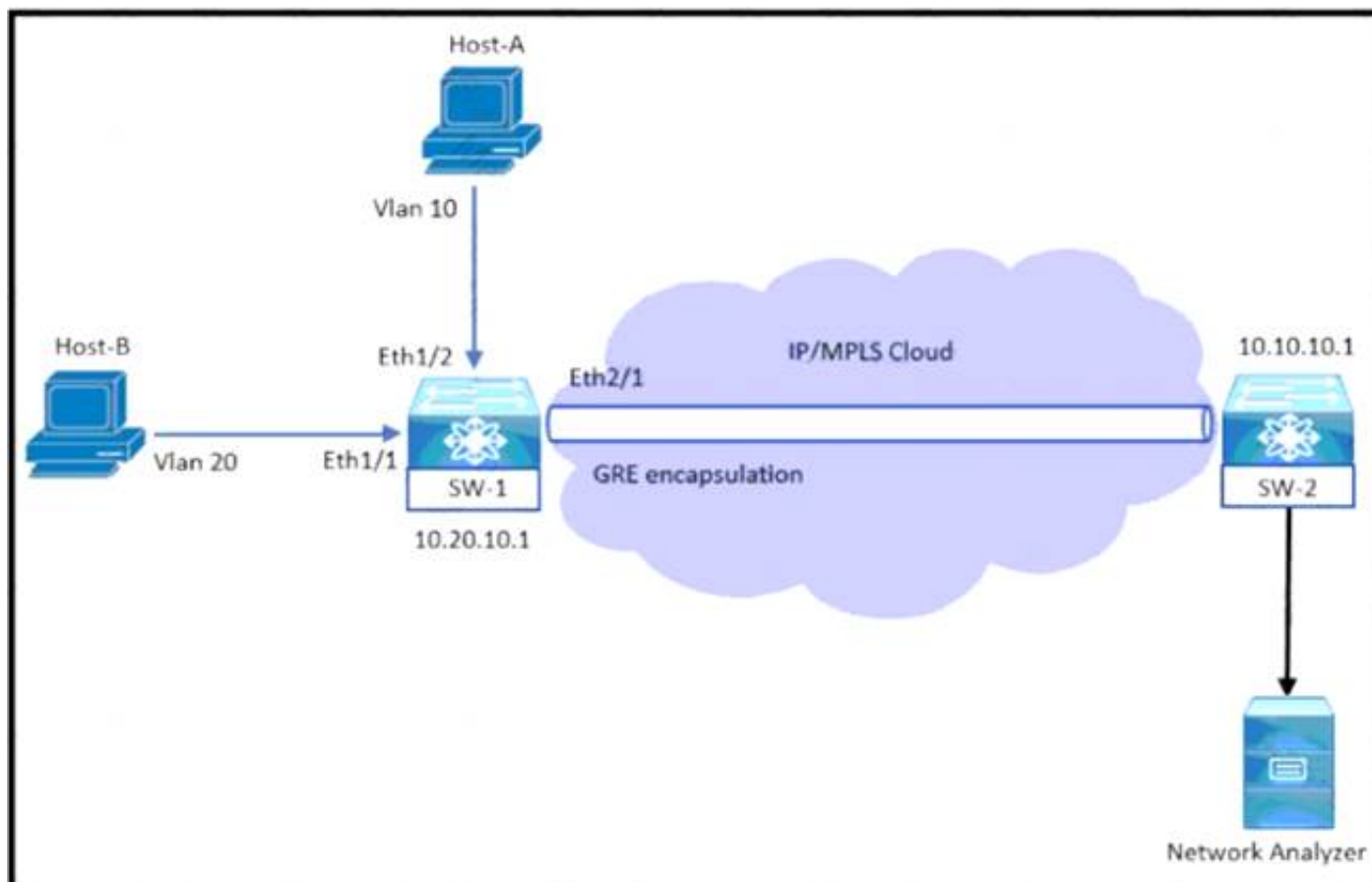
Which VLANs are capable to be assigned on vPC interfaces?

- A. 100-103
- B. 100-104
- C. 100-102
- D. 100-105

**Answer: D**

#### NEW QUESTION 208

Refer to the exhibit.



An engineer monitors ingress traffic from Host-A and all traffic for VLAN 20 from Host-B. Which configuration must be implemented to monitor and export traffic to Network Analyzer?

- ☐ SW-1(config)# monitor session 5  
SW-1(config-monitor)# source interface ethernet 1/2 rx  
SW-1(config-monitor)# source interface ethernet 1/1 tx  
SW-1(config-monitor)# source vlan 20 both  
SW-1(config-monitor)# destination ip 10.10.10.1  
SW-1(config-monitor)# no shut
- ☐ SW-1(config)# monitor session 5 type erspan-source  
SW-1(config-erspan-src)# source interface ethernet 1/2 rx  
SW-1(config-erspan-src)# source vlan 20 both  
SW-1(config-erspan-src)# destination ip 10.10.10.1  
SW-1(config-erspan-src)# erspan-id 111  
SW-1(config-erspan-src)# no shut
- ☐ SW-1(config)# monitor session 5 type erspan  
SW-1(config-erspan-src)# source interface ethernet 1/2 rx  
SW-1(config-erspan-src)# source interface ethernet 1/1 both  
SW-1(config-erspan-src)# destination ip 10.10.10.1  
SW-1(config-erspan-src)# mtu 1000  
SW-1(config-erspan-src)# no shut
- ☐ SW-1(config)# monitor session 5  
SW-1(config-monitor)# source interface ethernet 1/2 rx  
SW-1(config-monitor)# source interface ethernet 1/1 both  
SW-1(config-monitor)# source vlan 20 both  
SW-1(config-monitor)# destination interface ethernet 2/1  
SW-1(config-monitor)# no shut

- A. Option A  
B. Option B  
C. Option C  
D. Option D

**Answer: B**

#### NEW QUESTION 211

An engineer is implementing the Cisco ACI fabric and must create two different vPCs from leaf switches A and B. The vPCs are deployed as follows:

- vPC 1 encompasses ports Eth 1 /1 on leaf A and B and connects to server 1.
- vPC 2 encompasses port Eth1/2 on leaf A and B and connects to server 2.

A leaf switch profile listing leaves A and B is already configured Which ACI object must be created to meet these requirements?

- A. two vPC interface policy groups  
B. one access port interface policy group  
C. two PortChannel interface policy groups  
D. one vPC interface policy group

**Answer: A**

#### NEW QUESTION 215

Which virtualization feature is provided by network-attached storage?

- A. ALUA path redirection  
B. hypervisor host boot LUN  
C. VM cluster shared disk  
D. raw device passthrough

**Answer: C**

#### NEW QUESTION 216

An engineer must optimize ARP responses and reduce unnecessary ARP broadcasts over the VXLAN/EVPN fabric. Which action accomplishes these tasks?

- A. Configure ip proxy-arp under the VLAN SVI associated with the VXLAN VNI.  
B. Configure ip proxy-arp within the VXLAN VNI configuration under the VTEP NVE interface.  
C. Configure suppress-arp within the VXLAN VNI configuration under the VTEP NVE interface.  
D. Configure suppress-arp under the VLAN SVI associated with the VXLAN VNI.

**Answer: C**

#### NEW QUESTION 217

An engineer needs to connect Cisco UCS Fabric Interconnect (FI) to an external storage array. Due to budget limitations, the engineer must connect a Cisco UCS FI directly to an FC storage port. Which two actions must be taken to complete this connection? (Choose two.)

- A. Configure the fabric interconnect in FC switch mode.  
B. Set FC zoning to disabled when creating the VSAN  
C. Create a storage connection policy.  
D. Configure the fabric interconnect in end-host mode,  
E. Create the required VSAN in the SAN cloud.

**Answer: AE**

#### NEW QUESTION 220

A Cisco ACI engineer must configure an access port on a Cisco ACI leaf switch. The access policy should be configured so that it supports L3out connectivity concurrently with several EPGs that are mapped to this interface with the static port method. How should the access policy be configured?

- A. by linking the interface policy group to multiple Attachable Access Entity Profiles
- B. with a single Attachable Access Entity Profile that is linked to the corresponding routed domain and physical domain
- C. with two interface policy groups that are linked to the same interface profile port selector
- D. by mapping a single physical domain, mapped to the L3out and EPG interfaces

**Answer: D**

#### NEW QUESTION 225

A Cisco UCS user called "Employee1" accidentally changed the boot policy of the Cisco UCS server at the Cisco UCS Manager root level. This change impacted all service profiles, and their storage connectivity was lost. The system administrator wants to prevent this issue from recurring in the future. The new security policy mandates that access must be restricted up to the organization level and prevent other users from modifying root policies. Which action must be taken to meet these requirements?

- A. Modify the privilege level assigned to the user
- B. Assign users to a specific Cisco UCS locale
- C. Assign the user "Employee1" the network-operator role
- D. Define a custom user role and assign it to users

**Answer: B**

#### Explanation:

[https://www.cisco.com/c/en/us/td/docs/unified\\_computing/ucs/ucs-manager/GUI-User-Guides/Admin-Managem](https://www.cisco.com/c/en/us/td/docs/unified_computing/ucs/ucs-manager/GUI-User-Guides/Admin-Managem%20User%20Locales) User Locales You can assign a user to one or more locales. Each locale defines one or more organizations (domains) to which a user can access. Access is usually limited to the organizations specified in the locale.

[https://www.cisco.com/c/en/us/td/docs/unified\\_computing/ucs/ucs-manager/GUI-User-Guides/Admin-Management/4-1/b\\_Cisco\\_UCS\\_Admin\\_Mgmt\\_Guide\\_4-1/m\\_rolebased\\_access\\_control\\_configuration.html#d18994e1993a1635](https://www.cisco.com/c/en/us/td/docs/unified_computing/ucs/ucs-manager/GUI-User-Guides/Admin-Management/4-1/b_Cisco_UCS_Admin_Mgmt_Guide_4-1/m_rolebased_access_control_configuration.html#d18994e1993a1635)

#### NEW QUESTION 230

An engineer must start a software upgrade on a Cisco Nexus 5000 Series Switch during a zone merge. What is the result of this action?

- A. The zone merge stops.
- B. The zone merge pauses until the upgrade completes
- C. The upgrade stops
- D. The zone merge executes and then the upgrade completes.

**Answer: C**

#### Explanation:

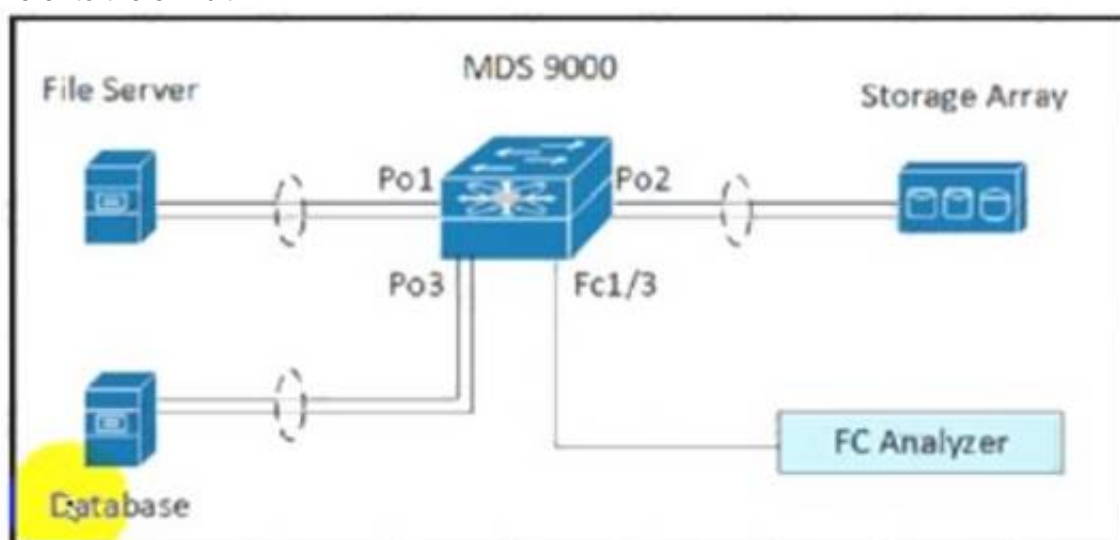
[https://www.cisco.com/c/en/us/td/docs/switches/datacenter/nexus5500/sw/upgrade/602\\_N2\\_2/n5500\\_upgrade\\_d](https://www.cisco.com/c/en/us/td/docs/switches/datacenter/nexus5500/sw/upgrade/602_N2_2/n5500_upgrade_d)

The specific requirements for a nondisruptive upgrade (ISSU) are as follows:

- Topology requirements— A Cisco Nexus device on which an ISSU is being initiated should not be in one of the unsupported topologies listed in the previous figure. No interface should be in a spanning-tree designated forwarding state. Also, do not configure Bridge Assurance on any interface of the Cisco Nexus device. vPC peer-link is an exception to these requirements.
- Layer 2 requirement— The ISSU process aborts if the system has any Link Aggregation Control Protocol (LACP) fast timers configured.
- FC/FCoE requirements—Check that the topology is stable for an ISSU to work correctly. You must check the following:
  - Domain Manager—As part of the installation process, domain manager checks if the fabric is in a stable state. If the fabric is not stable, the installation aborts.
  - CFS—As part of the installation process, Cisco Fabric Services (CFS) checks if any application (ntp, fsm, rcsn, fctime) is locked. If any application is holding a CFS lock, the installation aborts.
  - Zone Server— The installation process aborts if a zone merge or zone change request is in progress.
  - FSPF—As part of the upgrade process, Fabric Shortest Path First (FSPF) verifies if the configured interface dead interval is more than 80 seconds; otherwise, the installation aborts.

#### NEW QUESTION 234

Refer to the exhibit.





```
interface port-channel 1
  channel mode active
interface port-channel 2
  channel mode active
interface fcl/1-2
  channel-group 1
  no shutdown
interface fcl/4-5
  channel-group 2
  no shutdown
interface fcl/7-8
  channel-group 3
  no shutdown
vsan database
  vsan 100 name fabricl
  vsan 100 interface port-channel 1
  vsan 100 interface port-channel 2
  vsan 100 interface port-channel 3
```

A storage engineer must monitor the traffic from the file server to the FC analyzer. The file server and the database use the same storage array. Which configuration must be applied to the Cisco MDS 9000 Series Switch to accomplish this goal?

- ☐ MDS-9000(config)# span session 1  
MDS-9000(config-span)# destination interface fc1/3  
MDS-9000(config-span)# source interface port-channel 1
- ☐ MDS-9000(config)# span session 1  
MDS-9000(config-span)# destination interface port-channel 2  
MDS-9000(config-span)# source interface vsan 100
- ☐ MDS-9000(config)# span session 1  
MDS-9000(config-span)# destination interface port-channel 2  
MDS-9000(config-span)# source interface fc1/1
- ☒ MDS-9000(config)# span session 1  
MDS-9000(config-span)# destination interface vsan 100  
MDS-9000(config-span)# source interface port-channel 1

- A. Option A
- B. Option B
- C. Option C
- D. Option D

**Answer: B**

#### NEW QUESTION 238

The VMM domain is integrated between Cisco APICs and vCenter using a distributed vSwitch. The traffic must be blocked between a subset of endpoints in an EPG based on specific VM attributes and the rest of the VMs in that EPG. Which set of actions blocks this traffic?

- ☐
  1. Set Allow Microsegmentation under the EPG VMM Domain Association to "True"
  2. Set Intra-EPG Isolation to "Enforced" for the EPG
  3. Set Intra-EPG Isolation to "Enforced" for the uSeg EPG
- ☐
  1. Set Allow Microsegmentation under the EPG VMM Domain Association to "True"
  2. Set Intra-EPG Isolation to "Unenforced" for the EPG
  3. Set Intra-EPG Isolation to "Unenforced" for the uSeg EPG
- ☐
  1. Set Allow Microsegmentation under the EPG VMM Domain Association to "False"
  2. Set Intra-EPG Isolation to "Unenforced" for the EPG
  3. Set Intra-EPG Isolation to "Enforced" for the uSeg EPG
- ☒
  1. Set Allow Microsegmentation under the EPG VMM Domain Association to "True"
  2. Set Intra-EPG Isolation to "Enforced" for the EPG
  3. Set Intra-EPG Isolation to "Unenforced" for the uSeg EPG

- A. Option A
- B. Option B
- C. Option C
- D. Option D

**Answer: A**

#### NEW QUESTION 239

An engineer evaluates a UI-based infrastructure management system capable of monitoring and deploying standardize VXLAN BGP EVPN deployments. The storage administrator else need the solution to manage the cisco MDS 9090 series Switches. Which solution meets these requirements?

- A. Intersight
- B. UCSD
- C. Tetration
- D. DCNM

**Answer: D**

#### NEW QUESTION 241

What are two capabilities of the Cisco Network Assurance Engine? (Choose two.)



- A. It verifies the speed of network packet flows by using telemetry.
- B. It predicts the network load on a data center.
- C. It validates that devices comply with network security policies.
- D. It ensures that network performance meets an SLA.
- E. It predicts the impact of changes to the network.

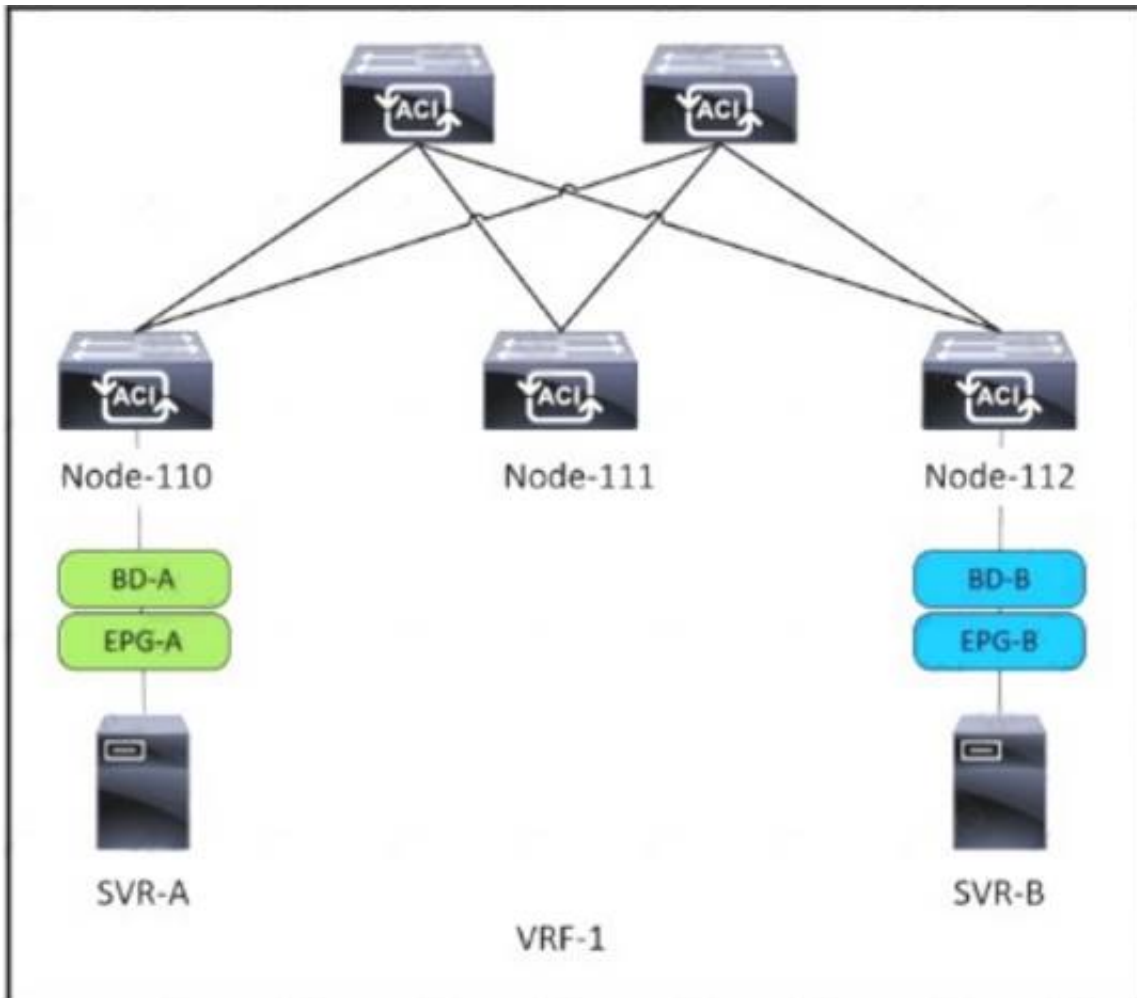
**Answer:** CE

**Explanation:**

- Predict the impact of network changes
  - Verify network-wide behavior
  - Ensure network security policy and compliance
- <https://www.cisco.com/c/en/us/products/collateral/data-center-analytics/network-assurance-engine/at-a-glance-c>

**NEW QUESTION 243**

Refer to the exhibit.



SVR-A in EPG-A/BD-A fails to reach SVR-B in EPG-B/BD-B. Which two conditions should be verified to analyze the traffic between the two EPGs? (Choose two.)

- A. A contract exists between EPG-A and EPG-B and allows the traffic.
- B. Limit Endpoint Learning is disabled on the bridge domain for EPG-B.
- C. SVR-B is learned as an endpoint in EPG-B from Node-112.
- D. EPG-A and EPG-B are excluded from the preferred group.
- E. The bridge domain for EPG-B floods ARP packets.

**Answer:** AC

**NEW QUESTION 247**

A network engineer must configure a Cisco MDS switch to use the local user database for console access if all AAA servers are unreachable. Which configuration should be applied to complete this task?

- A. aaa authentication login default fallback error local
- B. aaa authentication login console fallback error local
- C. aaa authentication login default local
- D. aaa authentication login console local

**Answer:** B

**NEW QUESTION 250**

What is a characteristic of the install all command on the cisco Nexus series switch?

- A. Upgrades only certain modules
- B. Automatically checks the image integrity
- C. Impact data plan traffic
- D. Continues the upgrade process if any step in the sequence fails

**Answer:** B

**Explanation:**

[https://www.cisco.com/c/en/us/td/docs/switches/datacenter/nexus9000/sw/7-x/upgrade/guide/b\\_Cisco\\_Nexus\\_9000\\_Series\\_NX-OS\\_Software\\_Upgrade\\_and\\_Downgrade\\_Guide\\_Release\\_7x/b\\_Cisco\\_Nexus\\_9000\\_Series\\_NXOS\\_Software\\_Upgrade\\_and\\_Downgrade\\_Guide\\_Release\\_7x\\_chapter\\_010.html](https://www.cisco.com/c/en/us/td/docs/switches/datacenter/nexus9000/sw/7-x/upgrade/guide/b_Cisco_Nexus_9000_Series_NX-OS_Software_Upgrade_and_Downgrade_Guide_Release_7x/b_Cisco_Nexus_9000_Series_NXOS_Software_Upgrade_and_Downgrade_Guide_Release_7x_chapter_010.html)

install all command automatically checks the image integrity, which includes the NXOS software image. The command performs a platform validity check to verify that a wrong image is not used. [https://www.cisco.com/c/en/us/td/docs/switches/datacenter/nexus3000/sw/upgrade/7\\_x/b\\_Cisco\\_Nexus\\_3000\\_S](https://www.cisco.com/c/en/us/td/docs/switches/datacenter/nexus3000/sw/upgrade/7_x/b_Cisco_Nexus_3000_S)

#### NEW QUESTION 253

Refer to the exhibit.

```
switch(config-dest)# sensor-group 100
switch(conf-tm-sensor)# path show_stats_fc3/1
switch(conf-tm-sensor)# subscription 100
switch(conf-tm-sub)# 
switch(conf-tm-sub)# dst-grp 100
```

An engineer needs to implement streaming telemetry on a cisco MDS 9000 series switch. The requirement is for the show command data to be collected every 30 seconds and sent to receivers. Which command must be added to the configuration meet this requirement?

- A. Sensor-grp 200 sample-period 30000
- B. Snsr-grp 200 sample-interval 30
- C. Sensor-grp 200 sample-period 30
- D. Snsr-grp 200 sample-interval 30000

**Answer: D**

#### Explanation:

snsr-grp <id> sample-interval <interval> Currently, sensor group ID supports only numeric ID values. Specify the streaming sample interval value; the value must be in milliseconds. The minimum streaming sample interval that is supported is 30000 milliseconds.

[https://www.cisco.com/c/en/us/td/docs/switches/datacenter/mds9000/sw/8\\_x/config/san\\_analytics/cisco-mds9000](https://www.cisco.com/c/en/us/td/docs/switches/datacenter/mds9000/sw/8_x/config/san_analytics/cisco-mds9000)

#### NEW QUESTION 258

Which data structure results from running this Python code?

```
>>> import json
>>> f = open('fname.json', 'r')
>>> var1 = json.load(f)
>>> var1
{'u'bd': 'u'bd1', 'u'ap': {'u'epgs': [{'u'name': 'u'app'}, {'u'name': 'u'web'}, {'u'name': 'u'db'}], 'u'name': 'u'OnlineStore'}, 'u'name': 'u'39106329', 'u'pvn': 'u'pvn1'}
```

- A. Set
- B. Tuple
- C. Dictionary
- D. List

**Answer: A**

#### NEW QUESTION 262

A network engineer must configure FCoE on an interface of a Cisco MDS 9000 Series Switch. It should be used for mapping between VLAN 600 and VSAN 6. Drag and drop the commands from the bottom into their implementation order in the FCoE configuration. Not all commands are used.

```
switch(config)# vlan 600
switch(config-vlan)# 
switch(config)# interface ethernet 1/2
switch(config-if)# switchport mode trunk
switch(config-if)# switchport trunk 
switch(config-if)# spanning-tree port type edge trunk
switch(config)# interface vfc 6
switch(config-if)# bind interface ethernet 1/2
switch(config)# vsan database
switch(config-vsan)# 
```

bind vsan 6

vsan 6 interface vfc 6

allowed vlan 1

allowed vlan 1,600

fcoe vsan 6

vsan 6 bind interface vfc 6

- A. Mastered
- B. Not Mastered

**Answer: A**

#### Explanation:

Graphical user interface, text Description automatically generated

#### NEW QUESTION 264

A new user with access privileges in the Finance department moves to a new Admin department. The user must have access privileges to the Admin department data and applications inside the Cisco UCS Manager Which set of changes must be implemented in Cisco UCS Central for the user to acquire the privileges?

- A. Create an Admin user account and remove the authentication service for the Finance privileges.
- B. Disable the Finance user account and add the authentication service for the Admin privileges.
- C. Create a new locale Admin and add the Admin department to the Admin local
- D. Delete the old locale
- E. Finance and remove the Finance department from the Finance locale.

**Answer: C**

#### NEW QUESTION 269

An engineer must configure remote authentication on a Cisco UCS system. The user password must be encrypted before it is sent to the authentication server. The company security policy requires the server to be based on an open standard. Drag and drop the UCS CLI AAA configuration commands from the left into the order in which they must be implemented on the right. Not all commands are used.

commit-buffer	step 1
create server <ip address>	step 2
set key	step 3
scope radius	step 4
scope tacacs+	step 5
scope security	

- A. Mastered
- B. Not Mastered

**Answer: A**

#### Explanation:

```
UCS-A# scope security
UCS-A /security # scope radius
UCS-A /security/radius # create server radiusserv7
UCS-A /security/radius/server* # set key
UCS-A /security/radius/server* # commit-buffer
```

#### NEW QUESTION 274

A network administrator must automate the process of pinging all the IP addresses from the 10.0.0.0/8 subnet. The subnet is already present in the ARP table of the Cisco Nexus switch. Drag and drop the bash commands to generate the desired output. Not all commands are used.

```
bash-4.3$ | grep "^10\." | | |
--- 10.1.0.2 ping statistics ---
5 packets transmitted, 5 packets received, 0.00% packet loss
--- 10.1.0.77 ping statistics ---
5 packets transmitted, 0 packets received, 100.00% packet loss
```

awk '{print "ping " \$1}'

egrep "statistics|loss"

grep -v "statistics|loss"

sed -e 's/ping /10./g'

show ip arp

vsh

vsh -c "show ip arp"

- A. Mastered
- B. Not Mastered

**Answer: A**

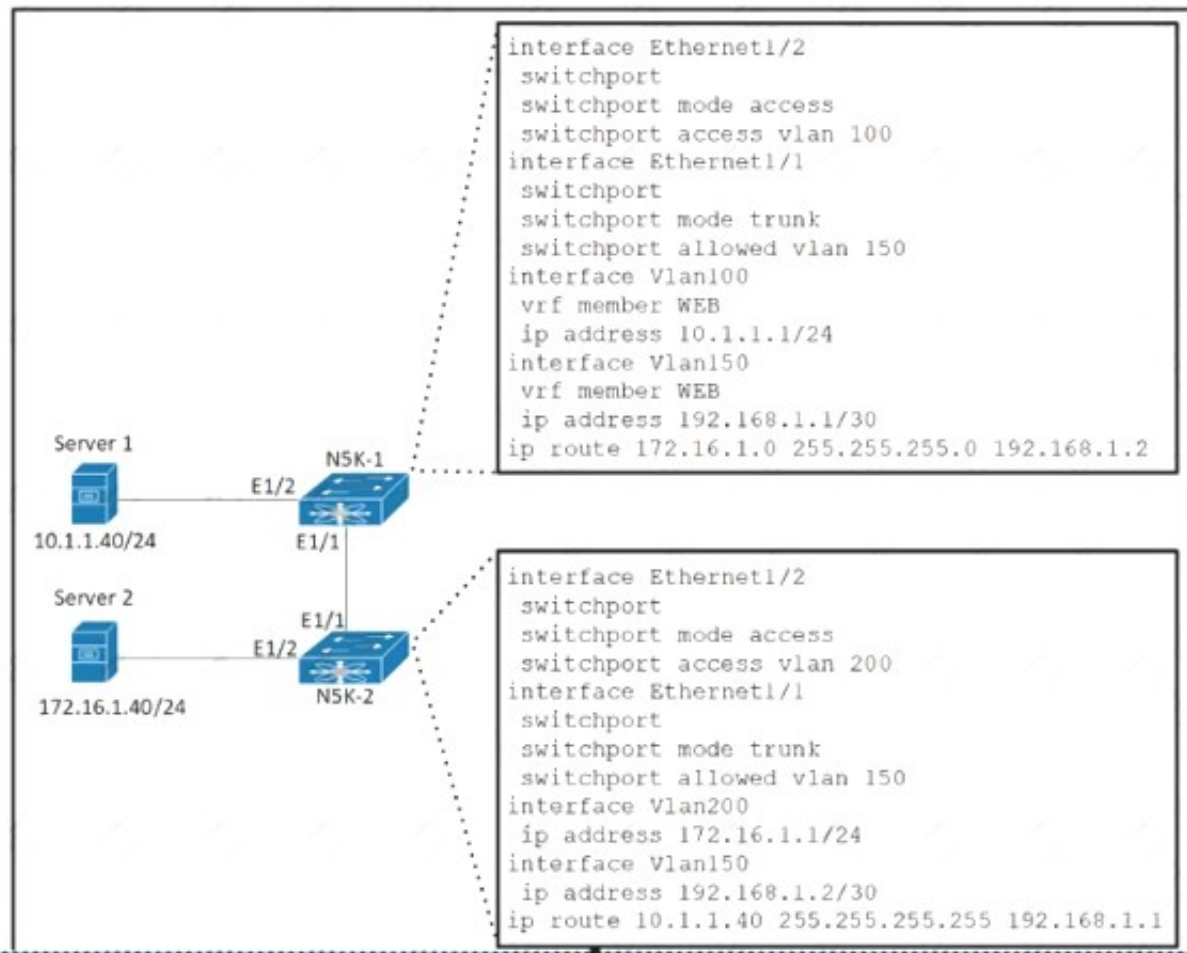
#### Explanation:

```
vsh -c "show ip arp", awk '{print "ping " $1}', vsh, egrep "statistics|loss"
```

#### NEW QUESTION 277

Refer to the exhibit.





The gateway of Server 1 is in the VLAN 100 SVI on N5K-1 and the gateway of Server 2 is in the VLAN 200 SVI on N5K-2. Server 1 must connect to Server 2 using unidirectional traffic. Which action accomplishes this requirement?

- A. Add VLAN 100 and 200 to the allowed VLANs list on the Ethernet 1/1 interface on N5K-1.
- B. Assign VRF WEB membership to interfaces VLAN 150 and 200 on N5K-2.
- C. Configure access VLAN 100 on interface Ethernet 1/2 on N5K-2.
- D. Create a static route in VRF WEB for the subnet of Server 2 on N5K-1.

**Answer: B**

#### NEW QUESTION 282

A network architect wants to propose a scalable network monitoring solution in which data is repeatedly acquired from network devices. The solution must use a push model and provide close to realtime access to operational data. Which technology must be used to meet these requirements?

- A. streaming telemetry
- B. logging
- C. SNMPv3
- D. CLI-based scripting

**Answer: A**

#### Explanation:

<https://blogs.cisco.com/developer/its-time-to-move-away-from-snmp-and-cli-and-use-model-driven-telemetry>

Why Model-Driven Telemetry?

Model-Driven Telemetry is a new approach for network monitoring in which data is streamed from network devices continuously using a push model and provides near real-time access to operational statistics. You can precisely define what data you want to subscribe to using standard YANG models (YANG is a data modeling language used to model configuration and state data manipulated by the NETCONF protocol) with no CLI required. It allows network devices to continuously stream real time configuration and operating state information to subscribers. Structured data is published at a defined cadence, or on-change, based upon the subscription criteria and data type.

#### NEW QUESTION 287

A host EPG Client wants to talk to a webserver in EPG Web. A contract with default settings is defined between EPG Client and EPG Web, which allows TCP communication initiated by the client toward the webserver with TCP destination port 80. Which statement is true?

- A. If EPG Web is made a preferred group member, a contract between EPG Client and EPG Web is no longer required for the host in EPG Client to reach the webserver in EPG Web.
- B. If vzAny is configured to consume and provide a "deny all" contract, traffic between EPG Client and EPG Web is no longer allowed.
- C. The host in EPG Client is allowed to connect to TCP destination port 80 on the webserver in EPG Web. The webserver will not be allowed to initiate a separate TCP connection to a host port with TCP source port 80.
- D. The host in EPG Client is allowed to connect to TCP destination port 80 on the webserver in EPG Web. The webserver is allowed to initiate a separate TCP connection to a host port with TCP source port 80.

**Answer: D**

#### Explanation:

Apply Both Direction and Reverse Filter Port in the subject for the filter. These two options are by default enabled...This means that if the provider EPG initiates

traffic toward the consumer EPG, the Cisco ACI fabric allows it for any destination ports if the source port is 80.

[https://www.cisco.com/c/en/us/td/docs/switches/datacenter/aci/apic/sw/1-x/Operating\\_ACI/guide/](https://www.cisco.com/c/en/us/td/docs/switches/datacenter/aci/apic/sw/1-x/Operating_ACI/guide/)

b\_Cisco\_Operating\_ACI/b\_Cisco\_Operating\_ACI\_chapter\_01000.html Reverse filter and apply in both directions is default.

If a filter allows traffic from any consumer port to a provider port (e.g. 8888), if reverse port filtering is enabled and the contract is applied both directions (say for TCP traffic), either the consumer or the provider can initiate communication. The provider could open up a TCP socket to the consumer using port 8888, whether the provider or consumer sent traffic first. [https://www.cisco.com/c/en/us/td/docs/switches/datacenter/aci/apic/sw/1-x/Operating\\_ACI/guide/b\\_Cisco\\_Operating\\_ACI/b\\_Cisco\\_Operating\\_ACI\\_chapter\\_01000.html](https://www.cisco.com/c/en/us/td/docs/switches/datacenter/aci/apic/sw/1-x/Operating_ACI/guide/b_Cisco_Operating_ACI/b_Cisco_Operating_ACI_chapter_01000.html)

#### NEW QUESTION 291

Refer to the exhibit. A network engineer must configure an authentication solution for Cisco UCS with these conditions:

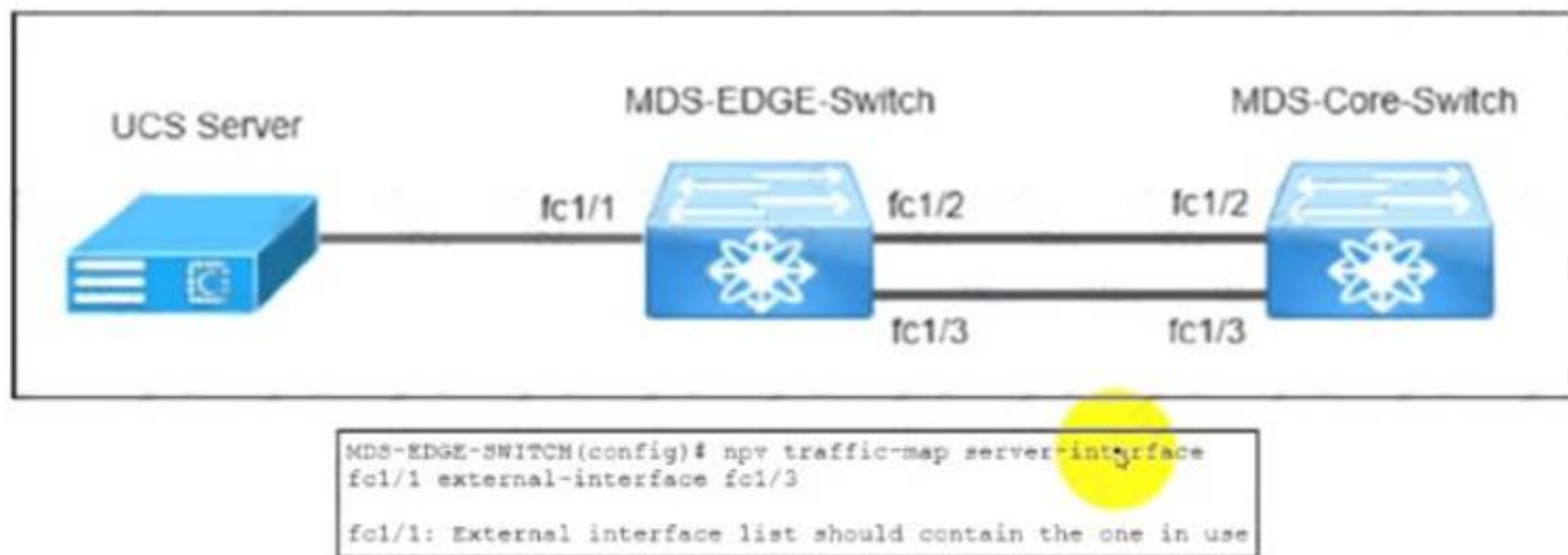
- Two-factor authentication must be enabled for all UCS user authentication.
- All AAA packets must be encrypted and use TCP port 49 to establish communication. Which set of actions needs these requirements?

- Create the LDAP provider.Change the LDAP group rule in an LDAP provider.
- Create the RADIUS group mapping.Change the RADIUS group rule in a RADIUS provider.
- Remove the LDAP provider.Create a TACACS+ provider in user management.
- Delete the LDAP group mapping.Create a RADIUS provider in user management.

**Answer: C**

#### NEW QUESTION 293

Refer to the exhibit.



The MDS-EDGE-Switch and MDS-Core-Switch are configured with NPV and NPIV features The FLOGI from Cisco UCS is received by the MDS-Core-Switch on interface fc1/2. An engineer tried to move all traffic between the MDS-EDGE-Switch and MOS-Core-Switch from interface fc 1/2 to fc1/3, but the attempt failed. Which set of actions completes the configuration?

- Disable the NPV feature in the MDS-EDGE-Switch.  
Re-enable the NPV feature.  
Disable interface fc1/1.
- Disable the NPIV feature in the MDS-EDGE-Switch.  
Re-enable the NPIV feature.  
Disable interface fc1/3.
- Shut down fc1/1 in the MDS-EDGE-Switch.  
Re-apply the command.  
Enable interface fc1/1.
- Shutdown fc1/3 in the MDS-EDGE-Switch.  
Re-apply the command.  
Enable interface fc1/3.

- Option A
- Option B
- Option C
- Option D

**Answer: C**

#### NEW QUESTION 298

Which two actions should be taken before an upgrade is started on a Cisco MDS switch? (Choose two.)

- check the impact of the upgrade using the show install all impact command
- disable Cisco Fabric Services
- back up the configuration
- free up space on the USB3 device by deleting old Cisco NX-OS image files
- make the primary supervisor the active supervisor

**Answer: AC**

#### Explanation:

[https://www.cisco.com/c/en/us/td/docs/switches/datacenter/mds9000/sw/5\\_2/upgrade/guides/nx-os/upgrade.html](https://www.cisco.com/c/en/us/td/docs/switches/datacenter/mds9000/sw/5_2/upgrade/guides/nx-os/upgrade.html)

#### NEW QUESTION 301

Refer to the exhibit.

```
monitor fabric session mySession
  description "This is my fabric ERSPAN session"
  destination tenant t1 application appl epg epg1 destination-ip 192.0.20.123 source-ip-prefix 10.0.20.1
  erspan-id 100
  ip dscp 42
  ip ttl 16
  mtu 9216
  exit
source interface eth 1/1 switch 101
  direction tx
  filter tenant t1 bd bdl
  filter tenant t1 vrf vrfl
no shut
```

An engineer needs to implement a monitoring session that should meet the following requirements:

- Monitor traffic from leaf to leaf switches on a Cisco ACI network
- Support filtering traffic from Bridge Domain or VRF

Which configuration must be added to meet these requirements?

- A. interface eth 1/2 switch 101
- B. interface eth 1/2 leaf 101
- C. filter tenant t1 application app1 epg epg1
- D. application epg epg1 app1

**Answer: C**

#### NEW QUESTION 305

A network engineer must download a firmware image from a remote location to a Cisco UCS Fabric Interconnect. The software bundle is over 232 MB in size. The file transfer must use encryption and authentication. Which protocol must be used to accomplish this goal?

- A. RDP
- B. HTTPS
- C. SCP
- D. TFTP

**Answer: C**

#### NEW QUESTION 306

An engineer needs to perform a backup of user roles and locales from Cisco UCS Manager to replicate the setting to a different fabric interconnect. The engineer wants to review the file before importing it to a target fabric interconnect. Which backup type must be selected to meet these requirements?

- A. all configuration
- B. system configuration
- C. logical configuration
- D. full state

**Answer: B**

#### Explanation:

[https://www.cisco.com/c/en/us/td/docs/unified\\_computing/ucs/ucs-manager/GUI-User-Guides/Admin-Managem](https://www.cisco.com/c/en/us/td/docs/unified_computing/ucs/ucs-manager/GUI-User-Guides/Admin-Managem)

- **System configuration**—An XML file that includes all system configuration settings such as **usernames, roles, and locales**. You can use the file generated from this backup to import these configuration settings to the original fabric interconnect or to a different fabric interconnect. You cannot use this file for a system restore.

#### NEW QUESTION 308

Drag and drop the storage technologies from the left onto the correct descriptions on the right.



NFSv2	uses client machine authentication
Kerberos	uses users authentication
NFSv4	authenticates clients and servers in NFSv4
RADIUS	authenticates clients to corporate directory systems

- A. Mastered
- B. Not Mastered

Answer: A

Explanation:

Application Description automatically generated  
The release of NFSv4 brought a revolution to authentication and security to NFS exports. NFSv4 mandates the implementation of the RPCSEC\_GSS kernel module, the Kerberos version 5 GSS-API mechanism, SPKM-3, and LIPKEY. With NFSv4, the mandatory security mechanisms are oriented towards authenticating individual users, and not client machines as used in NFSv2 and NFSv3. [https://web.mit.edu/rhel-doc/5/RHEL-5-manual/Deployment\\_Guide-en-US/s1-nfs-security.html](https://web.mit.edu/rhel-doc/5/RHEL-5-manual/Deployment_Guide-en-US/s1-nfs-security.html)

NEW QUESTION 310

An engineer must configure Cisco UCS Manager to accept only HTTPS connections that use TLS 1.2 The cipher security level must be high and the length of the keyring key value must be 2048 bits Drag and drop the code snippets from the right onto the blanks in the code on the left to accomplish these goals Not all commands are used

```
scope security
  create keyring ciscokring
  set modulus
  commit-buffer
scope system
  scope services
    enable https
    set https port 8443
    set https
    set https cipher-suite-mode
    set https ssl-protocol
```

keyring ciscokring

high-strength

1024 bits

mod2048

tls1-2

secure

- A. Mastered
- B. Not Mastered

Answer: A

Explanation:

Graphical user interface, application Description automatically generated

NEW QUESTION 315

Which behavior defines streaming telemetry as a push model in Cisco devices?

- A. Monitoring clients are pulling data from the network to see real-time statistics
- B. JSON encoded telemetry data is transported using the gRPC protocol
- C. The network devices send data in JSON or GPB format to configured endpoints
- D. Events and network changes generate telemetry data

Answer: D

Explanation:

<https://developer.cisco.com/docs/ios-xe/#!streaming-telemetry-quick-start-guide/streaming-telemetry>

NEW QUESTION 320

Which communication method does NFS use for requests between servers and clients?

- A. XDR
- B. SSC
- C. PRC
- D. SMB

Answer: C

Explanation:

<https://www-uxsup.csx.cam.ac.uk/pub/doc/redhat/WS2.1/rhl-rg-en-7.2/ch-nfs.html>

#### NEW QUESTION 324

A network architect must redesign a data center on OSPFv2. The network must perform fast reconvergence between directly connected switches. Which two actions must be taken to meet the requirement? (Choose two)

- A. Configure all links on AREA 0.
- B. Implement a virtual link between the switches.
- C. Use OSPF point-to-point links only.
- D. Set low OSPF hello and DEAD timers.
- E. Enable BFD for failure detection.

**Answer:** CD

#### NEW QUESTION 328

A Cisco Nexus 7000 Series switch runs VXLAN, and interface Ethernet 7/30 is configured as a trunk port. Which command set configures the switch to act as a gateway for VLAN 50?

```
interface Ethernet7/30 no switchport
no shutdown
service instance 1 vni no shutdown
```

- A. encapsulation profile VSI\_50\_TO\_500 default
- B. encapsulation profile vni VSI\_50\_TO\_500 dot1q 500 vni 50bridge-domain 500member vni 50 interface Vlan500ip address 10.50.50.51/24
- C. encapsulation profile vni VSI\_50\_TO\_500 dot1q 500 vni 50bridge-domain 500member vni 50 interface Bdi500jp address 10.50.50.51/24
- D. encapsulation profile vni VSI\_50\_TO\_500 dot1q 50 vni 500bridge-domain 50member vni 500 interface Bdi50ip address 10.50.50.51/24
- E. encapsulation profile vni VSI\_50\_TO\_500 dot1q 50 vni 500bridge-domain 50member vni 500 interface Vlan50ip address 10.50.50.51/24

**Answer:** C

#### NEW QUESTION 330

Refer to the exhibit.

```
vlan 10
 fcoe vsan 10

interface ethernet 1/3
 spanning-tree port type edge trunk
 switchport mode trunk
 switchport trunk allowed vlan 1, 10
```

An engineer must configure FCoE on a Cisco Nexus switch. Which two command sets complete this configuration? (Choose two.)

- ☒ interface vfc 10
  - bind interface fcoe-vfc 1/3
  - no shut
- ☐ vsan database
  - vsan 10 interface ethernet 1/3
- ☒ interface fcoe 10
  - bind interface ethernet 1/3
  - no shut
- ☐ interface vfc 10
  - bind interface ethernet 1/3
  - no shut
- ☐ vsan database
  - vsan 10 interface vfc 10

- A. Option A
- B. Option B
- C. Option C
- D. Option D
- E. Option E

**Answer:** DE

**Explanation:**

```
switch# configure terminal
```

```
switch(config)# vsan database
```

```
switch(config-vsan)# vsan 2 interface vfc 4
```

This example shows how to bind a virtual Fibre Channel interface to an Ethernet interface:

```
switch# configure terminal
```

```
switch(config)# interface vfc 4
```

```
switch(config-if)# bind interface ethernet 1/4
```

[https://www.cisco.com/c/en/us/td/docs/switches/datacenter/nexus5000/sw/fcoe/421\\_n1\\_1/b\\_Cisco\\_n5k\\_fcoe\\_config\\_gd\\_re\\_421\\_n1\\_1/Cisco\\_n5k\\_fcoe\\_config\\_gd\\_re\\_421\\_n1\\_1\\_chapter4.html](https://www.cisco.com/c/en/us/td/docs/switches/datacenter/nexus5000/sw/fcoe/421_n1_1/b_Cisco_n5k_fcoe_config_gd_re_421_n1_1/Cisco_n5k_fcoe_config_gd_re_421_n1_1_chapter4.html)

#### NEW QUESTION 331

A customer undergoes an IT security review assessment. The auditor must have read-only access to the Cisco Nexus 9000 Series Switch to perform the configuration review. The customer implements this security role for the auditor:

role name audit

rule 1 permit command \* rule 2 - Output omitted username auditor password C4SAFF0B96EB0045\$c0 role audit Which configuration snippet must complete the configuration?

- A. deny command write\*
- B. permit command enable
- C. permit command show \*
- D. deny command configure terminal

**Answer: D**

#### NEW QUESTION 335

Refer to the exhibit.

```
event manager applet local-backup
event cli match "copy running-config startup-config"
action 1 cli copy [ ] bootflash:/
current_config.txt
action 2 syslog msg Configuration saved and copied to
bootflash
action 3 event-default
```

A network engineer must create an EEM script that saves a copy of the running configuration to bootflash and writes a message to syslog when a user saves the configuration to a Cisco Nexus 9000 Series Switch. Which command completes the configuration set?

- A. running-config
- B. policy-default
- C. syslog-config
- D. event-default

**Answer: A**

#### NEW QUESTION 340

An engineer implements an ACI fabric and must implement microsegmentation of endpoints within the same IP subnet using a network-based attribute. The attribute mapping must allow IP subnet independence. Which attribute must be selected?

- A. MAC address
- B. Custom
- C. Tag
- D. IP

**Answer: D**

#### Explanation:

If you want to use a network-based attribute and classify IP addresses in the same subnet, you must use the MAC-based network attribute. IP-based microsegmented EPGs do not support classification for IP addresses in the same subnet.

[https://www.cisco.com/c/en/us/td/docs/switches/datacenter/aci/apic/sw/3-x/virtualization/b\\_ACI\\_Virtualization\\_](https://www.cisco.com/c/en/us/td/docs/switches/datacenter/aci/apic/sw/3-x/virtualization/b_ACI_Virtualization_)

#### NEW QUESTION 345

A network engineer is asked to describe the cloud infrastructure models from the perspective of their operation and access to resources. Drag and drop the descriptions from the left onto the appropriate.



Provisioned for open use.	Private cloud
At least two or more separate cloud infrastructures are connected together to facilitate hosted data and application portability.	Community cloud
Owned, managed, and operated by one or more organizations or teams.	Public cloud
Owned, managed, and operated by a single organization.	Hybrid cloud

- A. Mastered  
B. Not Mastered

**Answer:** A

**Explanation:**

Private Cloud: owned, managed, and operated by a single organization.

Community Cloud: Owned, managed, and operated by one or more organizations or teams. Public Cloud: Provisioned for open use.

Hybrid Cloud: At least two or more separate cloud infrastructures are connected together to facilitate hosted data and application portability.

**NEW QUESTION 347**

Refer to the exhibit.

```
Start time: Mon Apr 15 09:23:01 2019
Last election time: Mon Apr 15 09:24:24 2019
A: UP, PRIMARY
B: UP, SUBORDINATE
A: memb state UP, lead state PRIMARY, mgmt services state: UP
B: memb state UP, lead state SUBORDINATE, mgmt services state: UP
heartbeat state PRIMARY_OK
INTERNAL NETWORK INTERFACES:
eth1, UP
eth2, UP
HA NOT READY
No device connected to this Fabric Interconnect
```

What be connected to clear the HA NOT READY status?

- A. server chassis  
B. network uplinks  
C. management ports  
D. Layer 1-Layer 2 ports

**Answer:** A

**NEW QUESTION 348**

An engineer is asked to use SaaS to manage Cisco computing. Which two items are needed to accomplish the task? (Choose two.)

- A. UCS Manager  
B. Node name/Serial Number  
C. Device/Claim ID  
D. UCS Central  
E. Intersight

**Answer:** AE

**Explanation:**

<https://www.cisco.com/c/en/us/products/collateral/cloud-systems-management/intersight/intersight-ds.html>

**NEW QUESTION 353**

Refer to the exhibit.

```

1.130599 192.168.254.1 -> 192.168.254.13 TCP 60 29652 > ssh [ACK] Seq=1 Ack=53
Win=32449 Len=0
1.136261 00:8e:73:a2:41:0e -> Spanning-tree-(for-bridges)_00 STP 60 Conf. Root =
8192/10/ec:e1:a9:df:6c:80 Cost = 22 Port = 0x800e
1.373417 192.168.254.13 -> 192.168.254.1 SSH 106 Encrypted response packet len=52
1.570377 192.168.254.1 -> 192.168.254.13 TCP 60 29652 > ssh [ACK] Seq=1 Ack=105
Win=32786 Len=0
1.815558 192.168.254.13 -> 192.168.254.1 SSH 106 Encrypted response packet len=52
2.021840 192.168.254.1 -> 192.168.254.13 TCP 60 29652 > ssh [ACK] Seq=1 Ack=157
Win=32773 Len=0
2.525173 192.168.254.13 -> 192.168.254.1 SSH 106 Encrypted response packet len=52
2.731382 192.168.254.1 -> 192.168.254.13 TCP 60 29652 > ssh [ACK] Seq=1 Ack=209
Win=32760 Len=0
2.947365 192.168.254.13 -> 192.168.254.1 NTP 90 NTP Version 2, client
2.947623 192.168.254.1 -> 192.168.254.13 NTP 90 NTP Version 2, server
3.138157 00:8e:73:a2:41:0e -> Spanning-tree-(for-bridges)_00 STP 60 Conf. Root =
8192/10/ec:e1:a9:df:6c:80 Cost = 22 Port = 0x800e
3.139400 192.168.254.13 -> 192.168.254.1 SSH 106 Encrypted response packet len=52
3.270728 192.168.254.4 -> 239.255.70.83 UDP 166 Source port: cfs Destination port:
cfs
3.341123 192.168.254.1 -> 192.168.254.13 TCP 60 29652 > ssh [ACK] Seq=1 Ack=261
Win=32747 Len=0
3.835409 192.168.254.13 -> 192.168.254.1 SSH 106 Encrypted response packet len=52
4.041411 192.168.254.1 -> 192.168.254.13 TCP 60 29652 > ssh [ACK] Seq=1 Ack=313
Win=32734 Len=0
4.535284 192.168.254.13 -> 192.168.254.1 SSH 106 Encrypted response packet len=52
4.741072 192.168.254.1 -> 192.168.254.13 TCP 60 29652 > ssh [ACK] Seq=1 Ack=365
Win=32721 Len=0
4.947308 192.168.254.13 -> 192.168.254.1 NTP 90 NTP Version 2, client
4.947519 192.168.254.1 -> 192.168.254.13 NTP 90 NTP Version 2, server
5.139627 00:8e:73:a2:41:0e -> Spanning-tree-(for-bridges)_00 STP 60 Conf. Root =
8192/10/ec:e1:a9:df:6c:80 Cost = 22 Port = 0x800e
5.140867 192.168.254.13 -> 192.168.254.1 SSH 106 Encrypted response packet len=52

```

Cisco Fabric Services is enabled in the network. Which type of IP address is used by the Cisco Fabric Services protocol?

- A. IPv4 unicast address
- B. IPv4 multicast address
- C. IPv4 gateway address
- D. IPv4 anycast address

**Answer: B**

#### NEW QUESTION 355

What is the benefit of adding Cisco HyperFlex Hardware Acceleration Cards to a HyperFlex deployment?

- A. offline encryption acceleration
- B. increased network throughput
- C. GPU acceleration
- D. Increased compression efficiency

**Answer: D**

**Explanation:**

- [Additional Information on HyperFlex Hardware Acceleration Cards](#)

### Overview of HyperFlex Hardware Acceleration Cards

This chapter provides details for installation, post-installation, and troubleshooting of HyperFlex Hardware Acceleration Cards (PID: HX-PCIE-OFFLOAD-1) on HyperFlex nodes and for configuring your initial cluster. **These cards provide improved performance and compression efficiency for most storage workloads.**



**Note** An HXDP-P Enterprise license is required for installing and configuring HyperFlex Hardware Acceleration Cards.

[https://www.cisco.com/c/en/us/td/docs/hyperconverged\\_systems/HyperFlex\\_HX\\_DataPlatformSoftware/Installation\\_VMware\\_ESXi/3\\_5/b\\_HyperFlexSystems\\_Installation\\_Guide\\_for\\_VMware\\_ESXi\\_3\\_5/b\\_HyperFlexSystems\\_Installation\\_Guide\\_for\\_VMware\\_ESXi\\_3\\_5\\_chapter\\_01100.html#:~:text=Overview%20of%20HyperFlex%20Hardware%20Acceleration%20Cards,-This%20chapter%20provides&text=These%20cards%20provide%20improved%20performance%20and%20compression%20efficiency%20for%20most%20storage%20workloads.](https://www.cisco.com/c/en/us/td/docs/hyperconverged_systems/HyperFlex_HX_DataPlatformSoftware/Installation_VMware_ESXi/3_5/b_HyperFlexSystems_Installation_Guide_for_VMware_ESXi_3_5/b_HyperFlexSystems_Installation_Guide_for_VMware_ESXi_3_5_chapter_01100.html#:~:text=Overview%20of%20HyperFlex%20Hardware%20Acceleration%20Cards,-This%20chapter%20provides&text=These%20cards%20provide%20improved%20performance%20and%20compression%20efficiency%20for%20most%20storage%20workloads.)

#### NEW QUESTION 357

An engineer must configure a monitoring solution for a Cisco Nexus 9000 Series Switch based data center. The solution must provide real-time insight into the network health with subscription-based monitoring. The monitoring must be initiated from the client side, and the data must be sent via encryption. Which configuration steps complete the configuration?

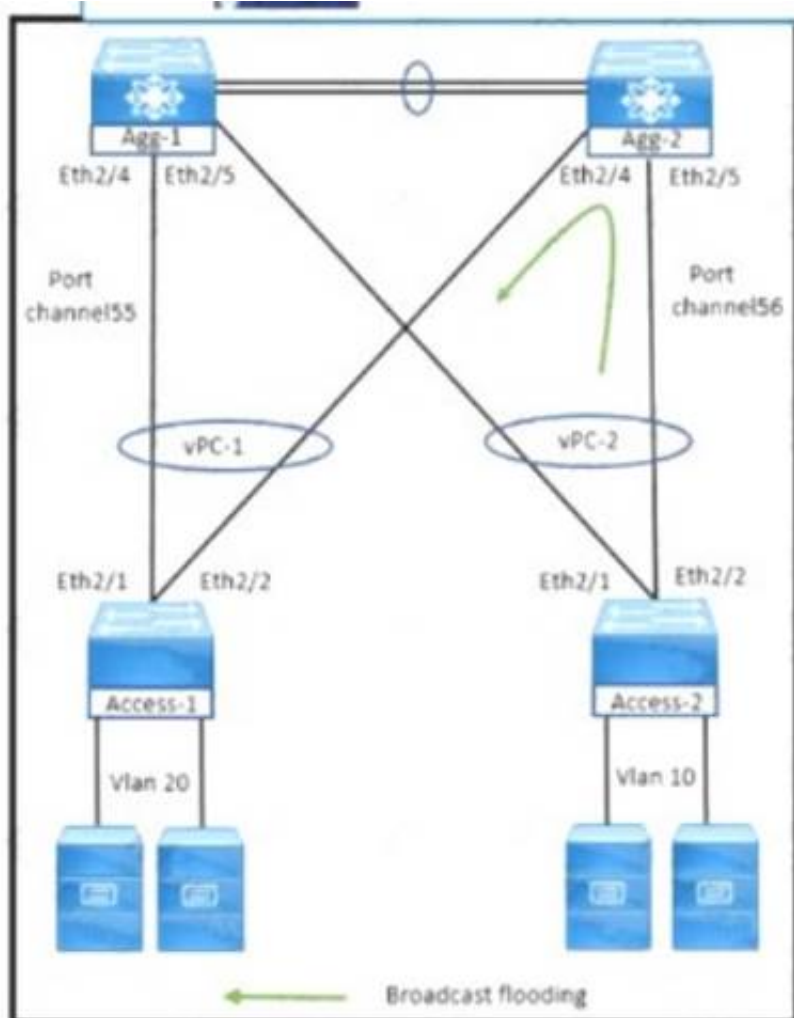
- ☐ Set the telemetry feature on the Nexus switch.  
Specify a certificate for telemetry transport.  
Configure a sensor group and destination.
- ☐ Enable GRPC on the Nexus switch.  
Generate a certificate.  
Configure gNMI inputs in Telegraf and output to InfluxDB.
- ☐ Configure Grafana on the Nexus switch.  
Specify the logging certificate.  
Enable syslog level 7 export to Grafana.
- ☐ Activate SNMPv3 on the Nexus switch.  
Set the globalEnforcePriv parameter.  
Configure an SNMP agent to poll information.

- A. Option A  
 B. Option B  
 C. Option C  
 D. Option D

**Answer: A**

### NEW QUESTION 360

Refer to the exhibit.



What happens to the broadcast traffic when it reaches aggregation switches?

- A. Only Agg-1 switch receives broadcast packets and does not forward to the peer link on Agg-2 switch.  
 B. Agg-1 switch prevents broadcast packets received on the vPC peer link from exiting the switch on ports Eth2M and Eth2/5  
 C. Agg-2 switch receives broadcast packets and stops forwarding to the peer link on Agg-1 switch.  
 D. Agg1 and Agg2 switches receive broadcast packets and does not forward them to me peer link or the port channel

**Answer: D**

### NEW QUESTION 363

An engineer configures an intersight virtual application and must claim over 200 targets. The engineer starts the Claim target procedure. The engineer has prepared this initial comma- separated value file to provision the targets:

```
UCSFI,10.1.1.3,user-1,pwd5516b817
IMC,10.1.1.5/26,user-2,pwdc65b1c43f
HX,10.1.2.1/30,user-3,pwd39860437
UCSD,1.1.1.1,user-4,pwd5003c9d5
```

Which Information must be included In the comma-separated value flit to provision the targets?

- A. FQON, AD name, IP address, email

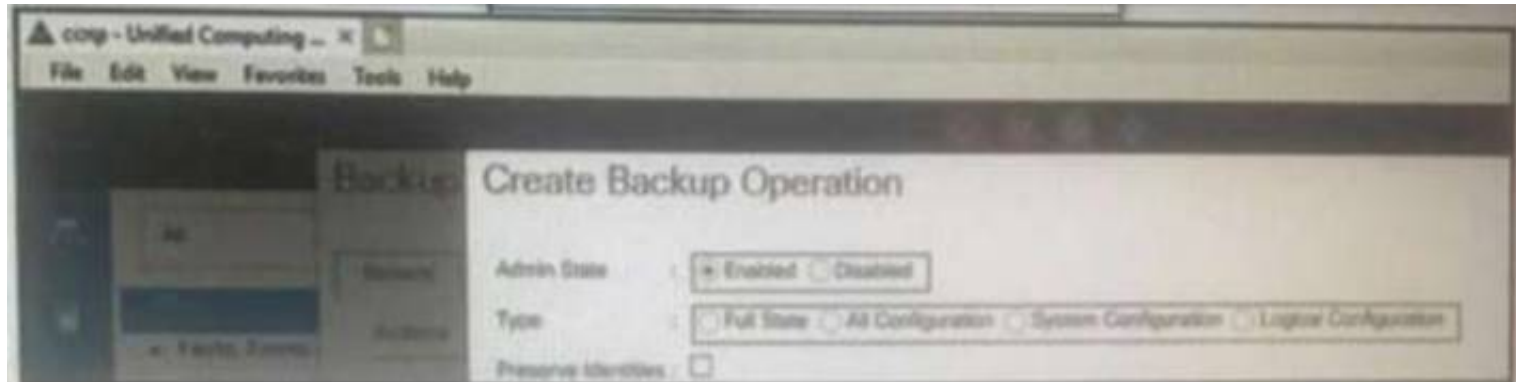


- B. location, address, name
- C. password
- D. certificate, user name, password
- E. email
- F. target type, hostname or IP address, user name, password

**Answer:** A

#### NEW QUESTION 366

Refer to the exhibit.



Which backup operation type not include the preserve identities feature?

- A. Full state
- B. Logical configuration
- C. System configuration
- D. All configuration

**Answer:** A

#### NEW QUESTION 367

An engineer must allow communication between the APIC controller and an OpenStack OpFlex agent. The agent is running on a compute node directly plugged to a Cisco ACI leaf switch. The engineer must enable and extend Infra VLAN on the port facing the compute and extend the Infra VLAN to the host. Which action must be taken to meet these requirements?

- A. Enable the Infra VLAN on the Interface Profile policy
- B. Enable the Infra VLAN on the Attachable Access Entity Profile.
- C. Add the infra VLAN via the physical domain.
- D. Add the infra VLAN via the VMM domain.

**Answer:** C

#### NEW QUESTION 370

An engineer is asked to manage a large-scale data center and collect information from multiple Cisco NX-OS devices using Cisco NX-OS Data Management Engine model. Which technology should be used to accomplish this goal?

- A. NX-API REST
- B. NETCONF
- C. JSON-RPC
- D. NX Yang

**Answer:** A

#### Explanation:

[https://www.cisco.com/c/en/us/td/docs/switches/datacenter/nexus9000/sw/7-x/programmability/guide/b\\_Cisco\\_Nexus\\_9000\\_Series\\_NX-OS\\_Programmability\\_Guide\\_7x/b\\_Cisco\\_Nexus\\_9000\\_Series\\_NXOS\\_Programmability\\_Guide\\_7x\\_chapter\\_010001.pdf](https://www.cisco.com/c/en/us/td/docs/switches/datacenter/nexus9000/sw/7-x/programmability/guide/b_Cisco_Nexus_9000_Series_NX-OS_Programmability_Guide_7x/b_Cisco_Nexus_9000_Series_NXOS_Programmability_Guide_7x_chapter_010001.pdf)

#### NEW QUESTION 375

A customer has a requirement to deploy a cloud service and needs to have full control over the underlying OS, data and application. Which cloud model meets this requirement?

- A. PaaS
- B. MaaS
- C. IaaS
- D. SaaS

**Answer:** C

#### Explanation:

Traditional IT is responsible for Application, Data, Runtime, Middleware, OS, Virtualization, Servers, Storage, Networking. IaaS = Infrastructure as a Service - is responsible for OS, Virtualization, Servers, Storage, Networking. SaaS = Software as a Service - Software deployed by the cloud provider - is responsible for nothing. PaaS = Platform as a Service - Software can be deployed by the customer building their own application | is responsible for Data and Application.

#### NEW QUESTION 376

An engineer is configuring HTTPS access to Cisco UCS Manager. The engineer created a keyring and created the certificate request for the keyring. Cisco UCS Manager continues to receive untrusted messages from a Firefox browser and a Chrome browser. Which action must be taken as the next step in the HTTPS access configuration?

- A. Create a trusted point
- B. Sign the certificate using the Cisco UCS Manager.
- C. Obtain a validated certificate from Cisco
- D. Install a trusted certificate in the browser store

Answer: A

NEW QUESTION 381

A network engineer must configure a Fibre Channel interface on the Cisco MDS 9000 Series Switch The configuration must meet these requirements

- The interface must be disabled when the bit errors threshold is exceeded
- Buffer-to-buffer credits must be set to the maximum value
- The interface must have full bandwidth allocated for its port group

Which command set configures a Fibre Channel interface that meets these requirements?

- A. 

```
interface fc1/1
switchport bit-errors
switchport fcrxbbcredit 220 mode Fx
switchport rate-mode dedicated
```
- B. 

```
interface fc1/1
switchport ignore bit-errors
switchport fcrxbbcredit 255 mode Fx
no switchport rate-mode
```
- C. 

```
interface fc1/1
no switchport ignore bit-errors
switchport fcrxbbcredit 255 mode Fx
switchport rate-mode dedicated
```
- D. 

```
interface fc1/1
no switchport bit-errors
switchport fcrxbbcredit 220 mode Fx
no switchport rate-mode
```

Answer: A

NEW QUESTION 386

Drag and drop the characteristics from the left onto the NAS protocols on the right. Some characteristics are used more than once

used to boot VHDX files

used to boot VMDK files

uses lease-based model for file locking

used to provide shared storage for hypervisors

NFS

SMB/CIFS

- A. Mastered
- B. Not Mastered

Answer: A

Explanation:

Diagram Description automatically generated

NFS:

- Used to boot VMDK files
  - Uses lease-based model for file locking
  - Used to provide shared storage for hypervisors
- SMB/CIFS:
- Used to boot VHDX files
  - Used to provide shared storage for hypervisors

NEW QUESTION 387

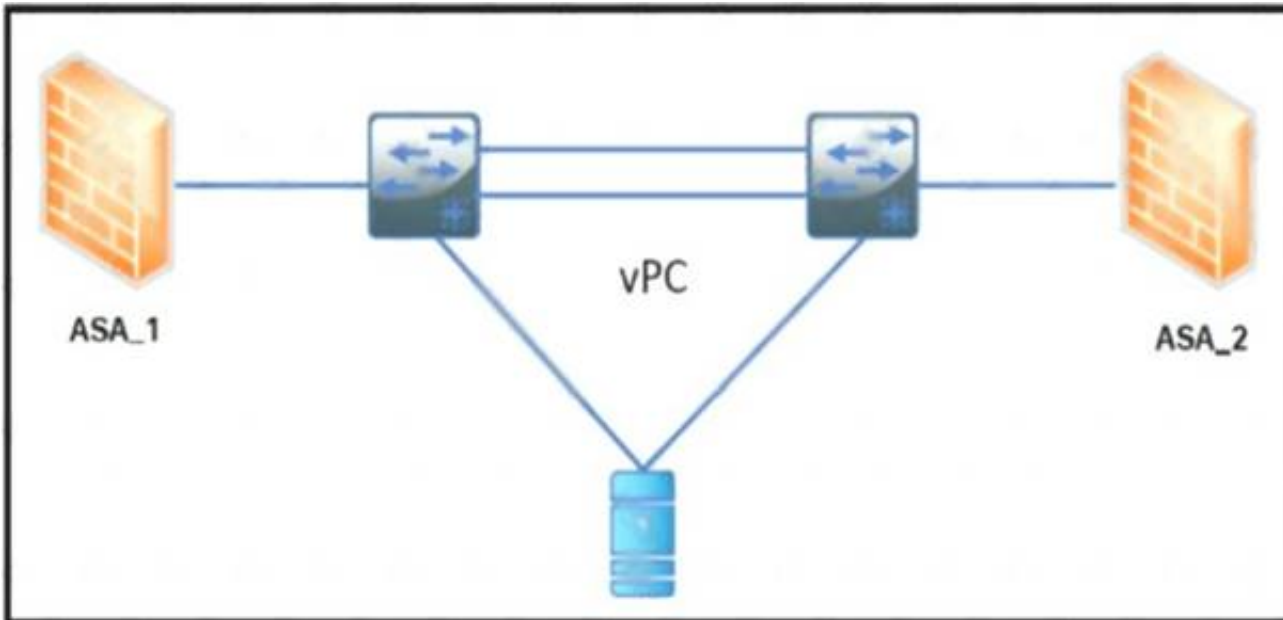
A network administrator must create a Linux container on a Cisco Nexus Series Switch. The container requires 10 percent of the CPU of the switch and 1024 MB of RAM to run successfully. Which task provides the necessary resources?

- A. Edit the container properties with the guestshell run command.
- B. Increase the compute resources with the guestshell resize command.
- C. Enable the Bash shell of the switch with the feature bash command
- D. Modify resource allocation with the virtual-service resize command.

**Answer: B**

#### NEW QUESTION 390

Refer to the exhibit



The ASA 1 acts as a Layer 3 gateway for all servers. The servers lose the gateway connectivity when the vPC peer links go down and the vPC keepalive remains up. Which action improves the high availability in the network?

- A. Create a static port channel with two links from each firewall to the switch
- B. Activate the vPC orphan-port suspend feature on the switch ports connected to the firewall
- C. Implement the IP reoVect feature on the vPC devices
- D. Enable the vPC peer gateway feature on the vPC devices

**Answer: D**

#### NEW QUESTION 395

An engineer is implementing OTV on a transport that supports multicast. The solution needs to meet the following requirements:

- Establish adjacency to the remote peer by using multicast.
- Enable OTV advertisements for VLAN 100 to the other site.

Which two commands should be configured to meet these requirements? (Choose two.)

- A. otv site-vlan 100
- B. otv data-group 232.2.2.0/28
- C. otv use-adjacency-server 172.27.255.94
- D. otv extend-vlan 100
- E. otv control-group 232.1.1.1

**Answer: DE**

#### Explanation:

[https://www.cisco.com/c/dam/en/us/products/collateral/switches/nexus-7000-series-switches/guide\\_c07-728315](https://www.cisco.com/c/dam/en/us/products/collateral/switches/nexus-7000-series-switches/guide_c07-728315)

[https://www.cisco.com/c/en/us/td/docs/switches/datacenter/sw/nx-os/OTV/config\\_guide/b\\_Cisco\\_Nexus\\_7000\\_](https://www.cisco.com/c/en/us/td/docs/switches/datacenter/sw/nx-os/OTV/config_guide/b_Cisco_Nexus_7000_)

#### NEW QUESTION 397

Refer to the exhibit.

```
NEXUS# configure terminal
NEXUS# locator-led fex 100
NEXUS(config)# feature fex
NEXUS(config)# fex 100
NEXUS(config-fex)# type N2232TM
NEXUS(config-fex)# serial JAF1427BQLG
NEXUS(config)# interface ethernet 1/24-32
NEXUS(config-if)# switchport
NEXUS(config-if)# switchport mode fex-fabric
NEXUS(config-if)# fex associate 100
NEXUS(config-if)# no shutdown

NEXUS # show fex 100 detail
FEX: 100 Description: FEX0100 state: Online
  FEX version: 5.0(2)N1(1) [Switch version: 5.0(2)N1(1)]
  FEX Interim version: 5.0(2)N1(0.205)
  Switch Interim version: 5.0(2)N1(0.205)
  Extender Model: N2K-C2232TM, Extender Serial: JAF1427BQLG
  Part No: 73-13373-01
  Card Id: 132, Mac Addr: 68:ef:bd:62:2a:42, Num Macs: 64
  Module Sw Gen: 21 [Switch Sw Gen: 21]
  post level: complete
  pinning-mode: static   Max-links: 1
  Fabric port for control traffic: Eth1/29
  Fabric interface state:
    Eth1/25 - Interface Up. State: Active
    Eth1/26 - Interface Up. State: Active
    Eth1/27 - Interface Up. State: Active
    Eth1/28 - Interface Up. State: Active
    Eth1/29 - Interface Up. State: Active
    Eth1/30 - Interface Up. State: Active
    Eth1/31 - Interface Up. State: Active
    Eth1/32 - Interface Up. State: Active
```



An engineer must distribute all the host ports to use all eight configured FEX uplinks. The solution must minimize disruption if an uplink fails Which action accomplishes this objective?

A. Set the pinning max-links value to 8  
B. Statically assign each host interface to a fabric uplink  
C. Change the supported FEX type  
D. Configure the eight uplinks in a port channel

Answer: D

**Explanation:**  
Traffic disruption should be minimised when an uplink fails. If pinning was used and an uplink failed, then traffic associated with the failed link would be disrupted until it could be re-routed. Using a port-channel is much less disruptive.

**NEW QUESTION 398**  
An engineer is implementing security on the Cisco MDS 9000 switch. Drag drop the descriptions from the left onto the correct security features on the right.

can be distributed via fabric services

uses the Exchange Fabric Membership Data protocol

allows a preconfigured set of Fibre Channel devices to logically connect to SAN ports

prevent unauthorized switches from joining the fabric or disrupting current fabric operations

Fabric Binding

Target 1

Target 2

Port Security

Target 3

Target 4

A. Mastered  
B. Not Mastered

Answer: A

**Explanation:**

can be distributed via fabric services

uses the Exchange Fabric Membership Data protocol

allows a preconfigured set of Fibre Channel devices to logically connect to SAN ports

prevent unauthorized switches from joining the fabric or disrupting current fabric operations

Fabric Binding

prevent unauthorized switches from joining the fabric or disrupting current fabric operations

uses the Exchange Fabric Membership Data protocol

Port Security

can be distributed via fabric services

allows a preconfigured set of Fibre Channel devices to logically connect to SAN ports

**NEW QUESTION 399**  
An engineer configures a storage environment for a customer with high- security standards. The secure environment is configured in vsan 50. The customer wants to maintain a configuration and active databases and prevent unauthorized switches from joining the fabric. Additionally, the switches must prevent rogue devices from connecting to their ports by automatically learning the WWPNs of the ports connected to them for the first time. Which two configuration sets must be used to meet these requirements? (Chose two.)

- visit - <https://www.surepassexam.com>

```
N5K-Core# configure terminal
Enter configuration commands, one per line. End with CNTL/Z.
N5K-Core(config)# interface fc2/1
N5K-Core(config-if)# switchport speed 4000
N5K-Core(config-if)# no shutdown
N5K-Core(config)# interface fc2/2
N5K-Core(config-if)# no shutdown
N5K-Core(config)# monitor session 1
N5K-Core(config-monitor)# source interface fc2/1
N5K-Core(config-monitor)# destination interface fc2/2
N5K-Core(config-monitor)# no shutdown
```

- A. Configure the switchport monitor under interface fc2/2
- B. Configure the switchport mode SD under interface tc2/1.
- C. Configure switchport speed 4000 under interface fc2/2.
- D. Configure session type fc under monitor session 1.
- E. Configure the switchport mode SD under interface fc2/2.

**Answer:** CE

**Explanation:**

<https://www.cisco.com/c/en/us/td/docs/switches/datacenter/nexus5000/sw/configuration/guide/cli/CLIConfigurationGuide/Span.html>

**NEW QUESTION 409**

An engineer must configure a control plane policy on a Cisco Nexus 9000 Series Switch that is located at IP 192.168.20.1 that moots those requirements

- Only HTTP, RDP, and ICMP traffic is permitted from subnet 192.168.10.0/24.
- The committed information rate must be 54000 pps.
- The burst size must be 128 packets.
- Any other traffic must be dropped.

Drag and drop the code snippets from the bottom onto the blanks in the code on the top to complete the configuration. Not all code snippets are used

```
ip access-list permithosts
 permit tcp 192.168.10.0/24 
 permit tcp 192.168.10.0/24 host 192.168.20.1 eq 3389
 permit icmp 192.168.10.0/24 host 192.168.20.1

class-map type control-plane match-any hostsmap
 match 

policy-map type control-plane hostsmap
 
 police cir 54000 pps bc 128 packets 
```

host 192.168.20.1 eq 443

class hostsmap

conform transmit violate drop

access-group name permithosts

class permithosts

conform transmit violate drop

- A. Mastered
- B. Not Mastered

**Answer:** A

**Explanation:**

Text Description automatically generated

**NEW QUESTION 414**

A UCS B- Series server located in B5108 chassis 1 slot 1 is currently unavailable. The server needs to be associated with a specific service profile when it becomes available. Which associate service profile option should be selected to accomplish this goal?

- A. server pool
- B. server
- C. custom server
- D. restrict migration

**Answer:** C

**Explanation:**

[https://www.cisco.com/en/US/docs/unified\\_computing/ucs/sw/gui/config/guide/141/UCSM\\_GUI\\_Configuration\\_Guide\\_141\\_chapter28.html](https://www.cisco.com/en/US/docs/unified_computing/ucs/sw/gui/config/guide/141/UCSM_GUI_Configuration_Guide_141_chapter28.html)  
Text, application Description automatically generated with medium confidence



### Associating a Service Profile with a Server or Server Pool

Follow this procedure if you did not associate the service profile with a blade server or server pool when you created it, or to change the blade server or server pool with which a service profile is associated.

#### Procedure

- Step 1** In the Navigation pane, click the Servers tab.
- Step 2** On the Servers tab, expand Servers > Service Profiles.
- Step 3** Expand the node for the organization that contains the service profile that you want to associate with a new server or server pool.

If the system does not include multi-tenancy, expand the root node.

- Step 4** Right-click the service profile you want to associate with a server and select Change Service Profile Association.

- Step 5** In the Associate Service Profile dialog box, select one of the following options:

Option	Description
Server Pool	Select a server pool from the drop-down list. Cisco UCS Manager assigns a server from this pool to the service profile. Continue with Step 7.
Server	Navigate to the desired available server in the navigation tree and select the server which will be assigned to the service profile. Continue with Step 7.
Custom Server	Specifies the chassis and slot that contains the server that will be assigned to the service profile. If the server is not in the slot or is otherwise unavailable, the service profile will be associated with the server when it becomes available. Continue with Step 6.

- Step 6** If you chose Custom Server, do the following:

- In the Chassis Id field, enter the number of the chassis where the selected server is located.
- In the Server Id field, enter the number of the slot where the selected server is located.

### NEW QUESTION 417

Refer to the exhibit.

```
ACI-Leaf1# show ip route vrf DATACENTER:DC

10.20.1.0/24, ubest/mbest: 1/0, attached, direct, pervasive

    *via 10.0.8.65%overlay-1, [1/0], 4w3d, static

172.16.100.0/24, ubest/mbest: 1/0

    *via 10.1.168.95%overlay-1, [200/5], 3w0d, bgp-132, internal, tag 132 (mpls-vpn)

172.16.99.0/24, ubest/mbest: 1/0

    *via 10.0.1.14, [20/0], 3w0d, bgp-132, external, tag 200
```

Which two statements describe the routing table of the leaf switch? (Choose two.)

- The next hop 10.0.8.65 for route 10.20.1.0/24 is the TEP address of a border leaf in ACI.
- The next hop 10.0.1.14 for route 172.16.99.0/24 is the TEP address of a border leaf in ACI.
- The next hop 10.1.168.95 for route 172.16.100.0/24 is the TEP address of a border leaf in ACI.
- 172.16.100.0/24 is a BD subnet in ACI.
- 10.20.1.0/24 is a BD subnet in ACI.

**Answer:** CE

### NEW QUESTION 422

Which storage protocol reduces file locks by using leasing?

- CIFS
- NFS 4
- NFS 3
- SMB

**Answer:** D

#### Explanation:

<https://www.ciscolive.com/c/dam/r/ciscolive/apjc/docs/2016/pdf/BRKCOM-1211.pdf>

- SMB Directory Leasing
  - Ability to cache file and directory metadata
  - Branch offices need to make less round trips to the central server

NEW QUESTION 427

An engineer must implement a solution that prevents untrusted DHCP servers from compromising the network. The feature must be configured on a Cisco Nexus 7000 Series Switch and applied to VLAN 10. The legitimate DHCP servers are connected to interface Ethernet 2/4. Which configuration set must be used to meet these requirements?

- ☐ n7k-1(config)# ip dhcp snooping vlan 10  
n7k-1(config)# interface Ethernet2/4  
n7k-1(config-if)# ip dhcp snooping trust
- ☒ n7k-1(config)# ip dhcp snooping vlan 10  
n7k-1(config)# interface Ethernet2/4  
n7k-1(config-if)# ip dhcp snooping verify vlan 10
- ☐ n7k-1(config)# ip dhcp snooping verify  
n7k-1(config)# interface Ethernet2/4  
n7k-1(config-if)# ip dhcp snooping verify vlan 10
- ☐ n7k-1(config)# ip dhcp snooping verify  
n7k-1(config)# vlan configuration 10  
n7k-1(config-vlan)# ip dhcp snooping trust

- A. Option A
- B. Option B
- C. Option C
- D. Option D

Answer: A

NEW QUESTION 431

An engineer must recover configuration on a Cisco MDS 9000 Series switch from a previous version that was backed up to bootflash and then verify the restoration.  
Drag and drop the commands on the left to the correct order on the right.

copy bootflash:<conriguration_file> runring-config	Step 1
copy running-config startup-config	Step 2
show startup-config	Step 3
write erase	Step 4
reload	Step 5

- A. Mastered
- B. Not Mastered

Answer: A

Explanation:

Graphical user interface, text, application, email Description automatically generated  
[https://www.cisco.com/c/en/us/td/docs/switches/datacenter/mds9000/sw/nx-os/configuration/guides/fund/fund\\_nx-os\\_5-x/b\\_Cisco\\_MDS\\_9000\\_Series\\_NX-OS\\_Fundamentals\\_Configuration\\_Guide\\_Release\\_5-x/ b\\_Cisco\\_MDS\\_9000\\_Series\\_NX-OS\\_Fundamentals\\_Configuration\\_Guide\\_Release\\_5-x\\_chapter\\_01000.html](https://www.cisco.com/c/en/us/td/docs/switches/datacenter/mds9000/sw/nx-os/configuration/guides/fund/fund_nx-os_5-x/b_Cisco_MDS_9000_Series_NX-OS_Fundamentals_Configuration_Guide_Release_5-x/b_Cisco_MDS_9000_Series_NX-OS_Fundamentals_Configuration_Guide_Release_5-x_chapter_01000.html)

NEW QUESTION 436

An engineer must configure an LACP port channel on two Cisco Nexus 7000 Series Switches. The interface e1/2 must be a hot-standby link that initiates negotiation with other ports Drag and drop the commands from the right onto the blanks in the configuration on the left Not all commands are used

```

configure terminal
feature 
interface Ethernet 1/2
switchport
channel-group 2 
interface Ethernet 1/3
switchport
channel-group 2 mode active
lacp port
        
```

mode active

lacp

priority 1

mode passive

priority 65534

mode on

- A. Mastered  
 B. Not Mastered

**Answer: A**

**Explanation:**

```

configure terminal
feature 
interface Ethernet 1/2
switchport
channel-group 2 
interface Ethernet 1/3
switchport
channel-group 2 mode active
lacp port
        
```

mode active

lacp

priority 1

mode passive

priority 65534

mode on

#### NEW QUESTION 441

Which action must be performed before renumbering a Cisco UCS chassis?

- A. Move the chassis to new ports on fabric interconnect.  
 B. Re-acknowledge the chassis.  
 C. Decommission the chassis.  
 D. Run the shut and no shut command on the connected ports.

**Answer: C**

#### NEW QUESTION 442

An engineer must configure Cisco Nexus 9000 Series Switches for Cisco UCS Director integration. The configuration must enable automated onboarding of the switches as they come online. For security purposes, the switches must have the bare minimum of connection methods enabled. The connection protocol must allow authentication through credentials. Which protocol must be configured on the switches to allow automated onboarding?

- A. SNMP  
 B. Telnet  
 C. SSH  
 D. HTTPS

**Answer: C**

#### NEW QUESTION 443

Which NFS version uses the TCP protocol and needs only one IP port to run the service?

- A. NFSv1  
 B. NFSv2  
 C. NFSv3  
 D. NFSv4

**Answer: D**

#### NEW QUESTION 444

What is a benefit of using the Cisco UCS Lightweight upgrade feature?

- A. Security updates are scheduled with the next reboot of the fabric interconnects.  
 B. All servers are rebooted to push the latest updates.  
 C. The firmware version of a component is updated only when it has been modified.  
 D. A soft reboot is available for the fabric interconnects.

**Answer: C**

#### NEW QUESTION 445

Refer to the exhibit.



### Create Boot Policy

Name:

Description:

Reboot on Boot Order Change: ☐

Enforce vNIC/vHBA/ISCSI Name: ☒

Boot Mode: ☒ Legacy ☐ UEFI

**WARNINGS:**  
 The type (primary/secondary) does not indicate a boot order presence.  
 The effective order of boot devices within the same device class (LAN/Storage/ISCSI) is determined by PCIe bus scan order.  
 If **Enforce vNIC/vHBA/ISCSI Name** is selected and the vNIC/vHBA/ISCSI does not exist, a config error will be reported.  
 If it is not selected, the vNICs/vHBAs are selected if they exist, otherwise the vNIC/vHBA with the lowest PCIe bus scan order is used.

+ Local Devices

+ CIMC Mounted vMedia

+ vNICs

+ vHBAs

+ iSCSI vNICs

+ EFI Shell

**Boot Order**

+ - % Advanced Filter + Export Print

Name	Order	vNIC/vH	Type	LUN No	WWN	Slot No	Boot No
No data available							

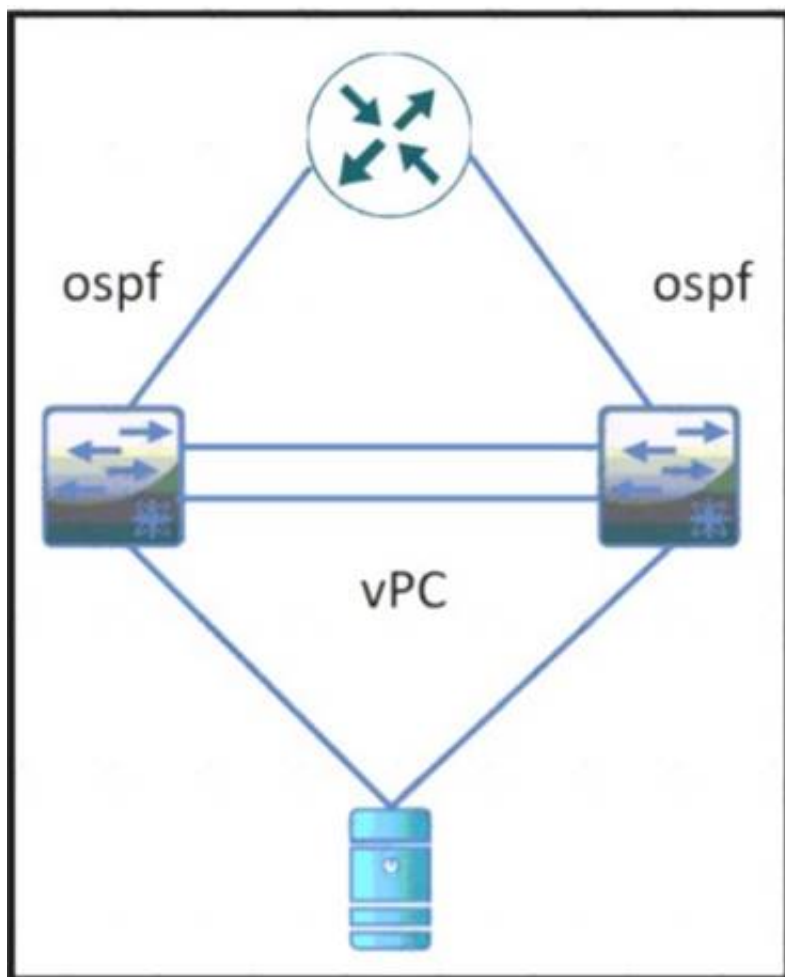
An engineer installs a new Cisco UCS B-Series server. The requirement is to install an operating system on a LUN that is provided by the Fibre Channel storage array. Which two steps must be configured in the boot policy to accomplish this goal? (Choose two.)

- A. Disable Enforce vNIC/vHBA/ISCSI Name
- B. Add Local CD/DVD and SAN Boot.
- C. Configure a SAN Boot Target with a WWPN
- D. Set Boot Order to External USB and LAN Boot
- E. Create (SCSI VNICS and add Local LUN

**Answer:** AD

#### NEW QUESTION 446

Refer to the exhibit



During a vPC peer switch reload, there is packet loss between the server and the router. Which action must be taken to prevent this behavior during future reloads?

- A. Set the routed uplink ports of the Cisco Nexus peers as orphans.
- B. Increase the vPC delay restore timer.
- C. Decrease the OSPF hello and dead interval timers.
- D. Disable vPC ARP synchronize on the vPC peers.

**Answer:** B

#### NEW QUESTION 451

An engineer must integrate Cisco ACI with a VMware vSphere environment. The requirement is to use a VMware Distributed Virtual Switch and to assign the encapsulation VLAN of the EPG from the VLAN pool. Which configuration set accomplishes this goal?

- A. Create a VMM domain association under the EPGs Create a VLAN pool with static allocated VLANs.
- B. Create a physical domain association under the EPGs Create a VLAN pool with static allocated VLANs.
- C. Create a physical domain association under the EPG
- D. Create a VLAN pool with oVnarmc allocated VLANs
- E. Create a VMM domain association under the EPGs Create a VLAN pool with dynamic allocated VLANs.

**Answer:** D

#### NEW QUESTION 455

An engineer is implementing FCoE. Which aspect of DCBXP on a Cisco Nexus switch affects this implementation?

- A. It uses the Cisco Fabric Services protocol to exchange parameters between two peer links.
- B. It always is enabled on 10/100-Mbps native Ethernet ports.
- C. It provides the authentication of peers on the Cisco Nexus switch.
- D. It requires that LLDP transmit and LLDP receive are enabled on the FCoE interface.

**Answer:** D

#### Explanation:

The Data Center Bridging Exchange Protocol (DCBXP) is an extension of LLDP. It is used to announce, exchange, and negotiate node parameters between peers. DCBXP parameters are packaged into a specific DCBXP TLV. This TLV is designed to provide an acknowledgement to the received LLDP packet. DCBXP is enabled by default, provided LLDP is enabled. DCBXP is disabled on ports where LLDP transmit or receive is disabled.  
[https://www.cisco.com/c/en/us/td/docs/switches/datacenter/nexus5000/sw/layer2/503\\_n2\\_1/b\\_Cisco\\_n5k\\_layer2](https://www.cisco.com/c/en/us/td/docs/switches/datacenter/nexus5000/sw/layer2/503_n2_1/b_Cisco_n5k_layer2)

#### NEW QUESTION 456

AN engineer enters these commands while in EEM on a Cisco Nexus 9000 Series Switch. event manager applet Backup-config event timer watchdog time 1800 name timer  
event cli match "copy running-config startup-config" what is the result of applying this configuration?

- A. It saves the running configuration every 1800 seconds.
- B. It generates an error because no action is mentioned.
- C. It executes the copy running-config startup-config command.
- D. It blocks the copy running-config startup-config command.

**Answer:** B

#### Explanation:

<https://www.cisco.com/c/en/us/td/docs/switches/datacenter/nexus9000/sw/93x/system-management/b-cisco-nex>  
Graphical user interface, text, application, email Description automatically generated

### Prerequisites for EEM

EEM has the following prerequisites:

- You must have network-admin user privileges to configure EEM.

### Guidelines and Limitations for EEM

EEM has the following configuration guidelines and limitations:

- The maximum number of configurable EEM policies is 500.
- Action statements within your user policy or overriding policy should not negate each other or adversely affect the associated system policy.
- To allow a triggered event to process any default actions, you must configure the EEM policy to allow the default action. For example, if you match a CLI command in a match statement, you must add the event-default action statement to the EEM policy or EEM will not allow the CLI command to execute.
- When you configure an EEM policy action to collect **show tech** commands, make sure to allocate enough time for the **show tech** commands to complete before the same action is called again.

#### NEW QUESTION 459

A network engineer needs a tool to automate the provisioning of Cisco UCS Service Profiles. The administrator has limited programming knowledge but is skilled with scripting tools. The tool must include existing support for Cisco UCS configuration. Additionally, the administrator will eventually use the solution to manage Cisco UCS C-Series Rack Servers. Which tool meets these requirements?

- A. Cisco DCNM
- B. Python scripts
- C. PowerShell
- D. Bash scripts

**Answer:** C

#### NEW QUESTION 461

Drag and drop the NAS features from the left onto the NAS descriptions on the right. Not all features are used

block-based data storage	storage type
Ethernet protocol	clustering type
FCoE	connectivity type
file-based data storage	serving protocol type
Fibre Channel protocol	
stripe data and metadata across nodes	
UPnP	

- A. Mastered
- B. Not Mastered

Answer: A

#### Explanation:

A screenshot of a computer Description automatically generated with medium confidence  
[https://en.wikipedia.org/wiki/Network-attached\\_storage](https://en.wikipedia.org/wiki/Network-attached_storage)

#### NEW QUESTION 463

What is an advantage of using Ansible for automation as compared to puppet and chef?

- A. Ansible automates the enforcement of configuration settings.
- B. Ansible perform automation without installing a software agent on the target node.
- C. Ansible configures a set of CLI commands on a device by using NETCONF.
- D. Ansible abstracts a scenario so that set of configuration setting can be used across multiple operating systems.

Answer: B

#### NEW QUESTION 468

A company provides applications and database hosting services to multiple customers using isolated infrastructure-as-a-service services within the same data center environment. The environment is based on Cisco MDS 9000 Series Switches. The requirement is to manage the environment by using Fibre Channel Security Protocol and to enable user authentication when the centralized AAA server is unreachable All communication between the MDS switches and the remote servers must be encrypted. Which command set must be used to meet these requirements?

- ☒ `aaa group server radius RadiusServer1`  
`aaa authentication login default RadiusServer1`
- ☐ `aaa group server radius RadiusServer1`  
`aaa authentication dhchap default group RadiusServer1`
- ☐ `aaa group server tacacs+ TacacsServer1`  
`aaa authentication dhchap default group TacacsServer1`
- ☐ `aaa group server tacacs+ TacacsServer1`  
`aaa authentication login console TacacsServer1`

- A. Option A
- B. Option B
- C. Option C
- D. Option D

Answer: B

#### NEW QUESTION 469

Which component is excluded by default from the host firmware package?

- A. network interface controller



- B. board controller
- C. storage controller
- D. local disk

**Answer:** D

#### NEW QUESTION 474

An engineer must configure OSPFv2 connectivity between a pair of Cisco Nexus switches. The connection between the switches must meet these requirements:

- > Use unicast for updates.
- > Use decentralized communication of updates.
- > Full adjacency between switches.

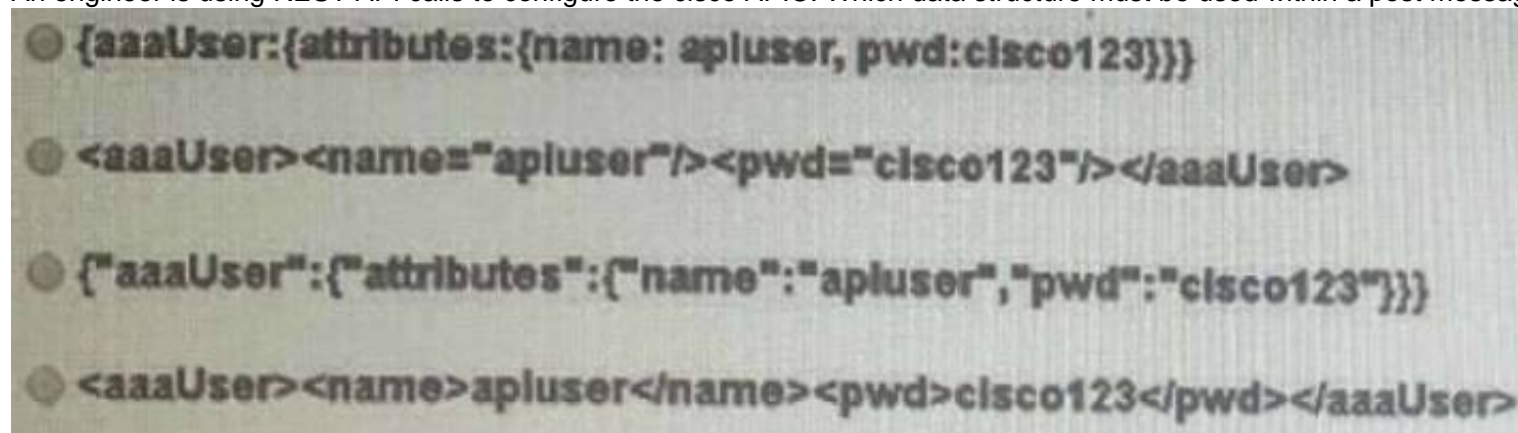
Which configuration is needed to meet these requirements?

- A. interface with a type of p2p network
- B. stub area between the neighbors
- C. filter list between the neighbors
- D. virtual link between the neighbors

**Answer:** A

#### NEW QUESTION 475

An engineer is using REST API calls to configure the cisco APIC. Which data structure must be used within a post message to receive a login token?



- A. Option A
- B. Option B
- C. Option C
- D. Option D

**Answer:** C

#### Explanation:

- **aaaListDomains** –Sent as a GET message, this method returns a list of valid AAA login domains. You can send this message without logging in.

You can call the authentication methods using this syntax, specifying either JSON or XML data structures:

```
{ http | https } :// host [:port] /api/ methodName . { json | xml }
```

This example shows a user login message that uses a JSON data structure:

```
POST https://apic-ip-address/api/aaaLogin.json
```



[https://www.cisco.com/c/en/us/td/docs/switches/datacenter/aci/apic/sw/2-x/rest\\_cfg/2\\_1\\_x/b\\_Cisco\\_APIC\\_REST\\_API\\_Configuration\\_Guide/b\\_Cisco\\_APIC\\_REST\\_API\\_Configuration\\_Guide\\_chapter\\_0](https://www.cisco.com/c/en/us/td/docs/switches/datacenter/aci/apic/sw/2-x/rest_cfg/2_1_x/b_Cisco_APIC_REST_API_Configuration_Guide/b_Cisco_APIC_REST_API_Configuration_Guide_chapter_0)

#### NEW QUESTION 479

An engineer must configure the order in which the server attempts to boot from available boot device types using Cisco Integrated Management Controller (Cisco IMC). The engineer must change the boot order configuration during the setup and apply the new requirements multiple times. The requirement is to change the Cisco IMC actual boot order so it is different from the configured boot order. Which setting accomplishes this goal?

- A. Enable the system to boot with the configured boot order.

- B. Set the boot configuration directly through BIOS.
- C. Configure the legacy and precision boot order to be mutually exclusive.
- D. Apply UEFI Secure Boot for a nonsupported operating system.

Answer: A

Explanation:

[https://www.cisco.com/en/US/docs/unified\\_computing/ucs/c/sw/gui/config/guide/1.5/b\\_Cisco\\_UCS\\_C-series\\_G](https://www.cisco.com/en/US/docs/unified_computing/ucs/c/sw/gui/config/guide/1.5/b_Cisco_UCS_C-series_G)

NEW QUESTION 484

A bridge domain is being extended out of a Cisco ACI fabric. Between which of these components are policies used to identify the connectivity between Endpoint Groups and the external connection?

- A. an external bridge domain and an external routed domain
- B. internal contracts and external contracts
- C. internal EPGs and external EPGs
- D. L2Out and L3Out

Answer: D

NEW QUESTION 489

An engineer is deploying a VXLAN EVPN environment for a customer. The customers environment suffers from a large amount of flooding related to hosts attempting to resolve the MAC to IP mapping on the network segment. Which feature prevents this issue from happening in the future?

- A. anycast rendezvous point
- B. anycast gateway
- C. IP ARP SYNC
- D. IP ARP suppression

Answer: D

NEW QUESTION 494

An engineer is configuring VNTag between a virtualized server and a Cisco Nexus 5500 Series switch. Drag and drop the configuration steps from the into the correct order on the right.

Configure support for VNTag mode on the interface that connects to the server.	Step 1
Configure the vNICs of the server.	Step 2
Configure the server to support NIV mode.	Step 3
Enable the virtualization feature set.	Step 4
Configure the port profile.	Step 5
Install the virtualization feature set.	Step 6

- A. Mastered
- B. Not Mastered

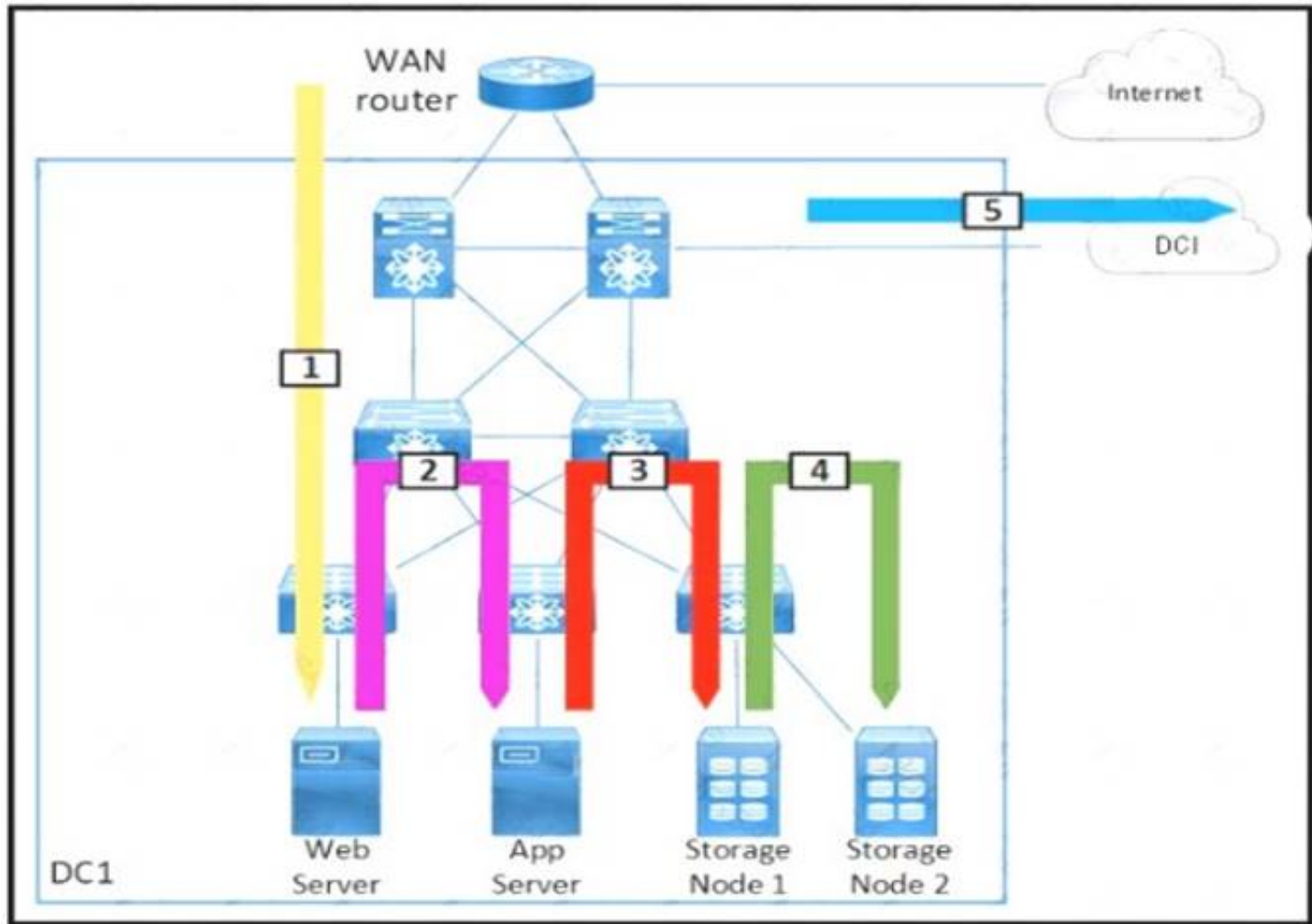
Answer: A

Explanation:

install the virtualization feature set  
Enable the virtualization feature set  
Configure the port profile  
Configure support for VNTag mode on the interface that connects to the server.  
Configure the server to support NIV mode  
Configure the vNICs of the server  
<https://www.cisco.com/c/en/us/support/docs/switches/nexus-5000-series-switches/117691-config-5500switch-00.html>  
[https://www.cisco.com/c/en/us/td/docs/switches/datacenter/nexus5500/sw/adapter-fex/6x/b\\_5500\\_Adapter\\_FEX\\_Config\\_6x/b\\_5500\\_Adapter\\_FEX\\_Config\\_602N11\\_chapter\\_010.html](https://www.cisco.com/c/en/us/td/docs/switches/datacenter/nexus5500/sw/adapter-fex/6x/b_5500_Adapter_FEX_Config_6x/b_5500_Adapter_FEX_Config_602N11_chapter_010.html)

NEW QUESTION 499

Refer to the exhibit.



Drag and drop each traffic flow type from the left onto the corresponding number on the right Not all traffic flow types are used

Inter-Data Center	1
East-West	2
North-West	3
North-South	4
South-West	5
Storage Traffic	
Storage Replication	

- A. Mastered
- B. Not Mastered

Answer: A

Explanation:  
Table Description automatically generated

NEW QUESTION 503  
Refer to the exhibit.



```
Switch1# show checkpoint summary
1) pim-checkpoint:
Created by admin
Created at Tue, 00:50:29 22 Jun 2021
Size is 24,855 bytes
User Checkpoint Summary
-----
Description: Created by Admin.

2) system-fm-pim:
Created by admin
Created at Tue, 00:08:57 22 Jun 2021
Size is 24,834 bytes
System Checkpoint Summary
-----
Description: Created by Feature Manager.
```

Which command must be used to restore configuration changes made by disabling the PIM feature and skipping any errors?  
Refer to the exhibit. Which command must be used to restore configuration changes made by disabling the PIM feature and skipping any errors?

- A. rollback running-config checkpoint new-checkpoint stop-at-first-failure
- B. rollback running-config checkpoint new-checkpoint verbose
- C. rollback running-config checkpoint system-fm-pim-best-effort
- D. rollback running-config checkpoint system-fm-pim atomic

**Answer: C**

#### NEW QUESTION 508

Refer to the exhibit.

An engineer must set access to Cisco IMC. The access must be allowed by logging onto the https //datacenter local web page The configuration presented is on the Cisco UCS C240 Series Server Which set of commands completes the configuration?

A)

```
Server# scope cimc
Server /cimc # scope network
Server /cimc/network # set vlan-enabled yes
Server /cimc/network # set vlan-id 10
Server /cimc/network # set vlan-priority 32
Server /cimc/network # set dns-use-dhcp-enabled yes
Server /cimc/network # commit
```

B)

```
Server# scope cimc
Server /cimc # scope network
Server /cimc/network # set dhcp-enabled yes
Server /cimc/network # set v4-addr 192.168.1.10
Server /cimc/network # set v4-netmask 255.255.255.0
Server /cimc/network # set v4-gateway 192.168.1.12
Server /cimc/network # commit
```

C)

```
Server# scope cimc
Server /cimc # scope network
Server /cimc/network # set dhcp-enabled yes
Server /cimc/network # set v4-addr 192.168.1.10
Server /cimc/network # set v4-netmask 255.255.255.0
Server /cimc/network # set preferred-dns-server 192.168.3.20
Server /cimc/network # commit
```

D)

```
Server# scope cimc
Server /cimc # scope network
Server /cimc/network # set vlan-enabled yes
Server /cimc/network # set vlan-id 10
Server /cimc/network # set vlan-priority 32
Server /cimc/network # set preferred-dns-server 192.168.3.20
Server /cimc/network # commit
```

- A. Option A
- B. Option B
- C. Option C
- D. Option D

Answer: C

NEW QUESTION 509

A network architect is asked to design and manage geographically distributed data centers across cities and decides to use a Multi-Site Orchestrator deployment. How many orchestrators should be deployed?

- A. 3
- B. 5
- C. 4
- D. 2

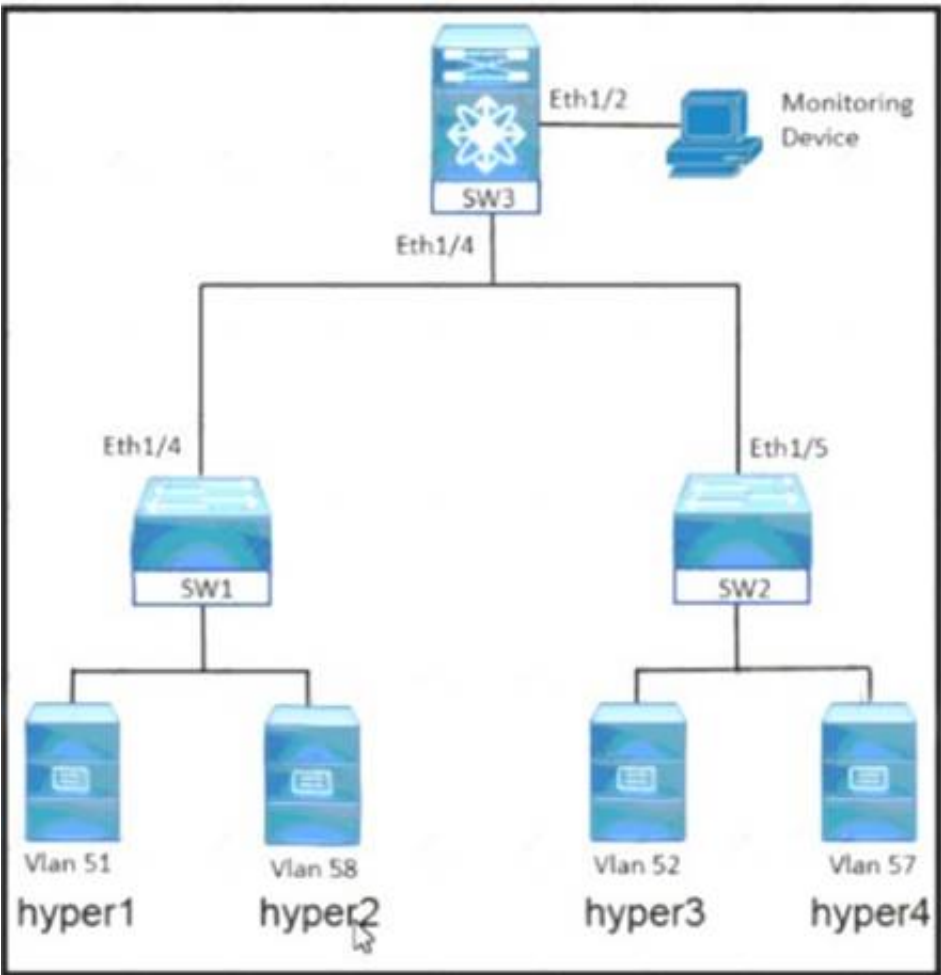
Answer: A

Explanation:

<https://www.cisco.com/c/en/us/solutions/collateral/data-center-virtualization/application-centricinfrastructure/w>

NEW QUESTION 512

Refer to the exhibit.



An engineer must monitor the Ethernet port and the corresponding VLAN traffic for the hyper4 device The SW3 device is a Cisco Nexus 7000 Series Switch Drag and drop the code snippets from the right into the boxes in the configuration to meet these requirements.

```
!SW3 configuration

interface ethernet 1/2
  switchport

monitor session 2
  source interface
  destination interface
  source
```

- vlan 57
- ethernet 1/2
- ethernet 1/4
- monitor
- interface vlan 57

- A. Mastered
- B. Not Mastered

Answer: A

**Explanation:**

Graphical user interface Description automatically generated

**NEW QUESTION 514**

An engineer must configure two Cisco Nexus 7000 series switches in the same data center to support OTV. Which command set completes the join interface configuration?

An engineer must configure two Cisco Nexus 7000 Series switches in the same data center to support OTV. Which command set completes the join interface configuration?

```
feature otv
otv site-identifier 256
interface overlay 1
otv control-group 239.1.1.1
otv data-group 239.1.1.0/29
otv join-interface ethernet 2/1
otv extend-vlan 5-10
no shutdown
```

☒ Edge Device 1  
interface ethernet 2/1  
ip address 192.0.2.1/24  
ip igmp version 3

Edge Device 2  
interface ethernet 2/1  
ip address 192.0.2.16/24  
ip igmp version 3

☐ Edge Device 1  
interface ethernet 2/1  
ip address 192.0.2.1/24  
ip igmp version 3  
ip pim sparse-mode

Edge Device 2  
interface ethernet 2/1  
ip address 192.0.2.16/24  
ip igmp version 3  
ip pim sparse-mode

☐ Edge Device 1  
interface ethernet 2/1  
ip address 192.0.2.1/24

Edge Device 2  
interface ethernet 2/1  
ip address 192.0.2.16/24

☐ Edge Device 1  
interface ethernet 2/1  
ip address 192.0.2.1/24  
ip igmp version 3

Edge Device 2  
interface ethernet 2/1  
ip address 192.0.2.1/24  
ip igmp version 3

- A. Option A
- B. Option B
- C. Option C
- D. Option D

**Answer:** A

**NEW QUESTION 516**

Refer to the exhibit.



```
event manager applet ConfigMgmt
  event cli match "copy run start"
  action 1 syslog priority warnings msg Configuration Modified
```

An engineer logs all occurrences of a configuration being saved. The engineer must generate an additional log message when someone attempts to change the configuration for interface Ethernet 1/1. Which set of commands must be used to meet these requirements?

- ☒ event manager applet ConfigMgmt  
event cli tag eth match "interface Ethernet1/1"  
event cli tag copy match "copy run start"  
event cli tag conf match "configure terminal"  
tag conf or eth or copy happens 2 in 3  
action 1 syslog priority warnings msg Configuration Modified  
action 2 event-default
- ☐ event manager applet ConfigMgmt  
event cli tag eth match "configure terminal ; interface Ethernet1/1"  
event cli tag copy match "copy run start"  
tag eth or copy happens 1 in 2  
action 1 syslog priority warnings msg Configuration Modified  
action 2 event-default
- ☐ event manager applet ConfigMgmt  
event cli tag eth match "interface Ethernet1/1"  
event cli tag copy match "copy run start"  
event cli tag conf match "configure terminal"  
tag conf and eth or copy happens 1 in 4294967295  
action 1 syslog priority warnings msg Configuration Modified
- ☐ event manager applet ConfigMgmt  
event cli tag eth match "configure terminal ; interface Ethernet1/1"  
event cli tag copy match "copy run start"  
tag eth and copy happens 1 in 2  
action 1 syslog priority warnings msg Configuration Modified

- A. Option A
- B. Option B
- C. Option C
- D. Option D

**Answer:** D

#### NEW QUESTION 521

Which file service protocol allows the files to appear locally mapped to the client and provides view, store, and update capabilities on a remote Linux-based storage repository that also serves as a distributed file system standard for NAS?

- A. NFS
- B. FTP
- C. iSCSI
- D. IFS

**Answer:** D

#### NEW QUESTION 526

An engineer must design an automation solution for the Cisco ACI Fabric to speed up the deployment of logical network elements for tenant provisioning. When creating a solution, the engineer must keep in mind that the tool must support these requirements:

- Allow the rapid creation and removal of logical containers.
- Support the creation of custom modules and data structures.
- Be extensible with external libraries and modules.
- Allow rapid testing of code using an on-demand execution environment.

Which automation tool meets these requirements?

- A. YAML
- B. Chef
- C. SaltStack
- D. Python

**Answer:** B

NEW QUESTION 531

A network engineer must implement RBAC on Cisco MDS 9000 Series Multilayer Switches.  
Drag and drop the Cisco MDS 9000 Series roles from the left onto the correct categories on the right.

san-operator	System Defined
global-admin	
server-admin	
storage-admin	
network-admin	User Defined
network-operator	

- A. Mastered
- B. Not Mastered

Answer: A

Explanation:

Graphical user interface Description automatically generated with low confidence  
[https://www.cisco.com/c/en/us/td/docs/unified\\_computing/ucs/ucs-manager/GUI-User-Guides/Admin Management/3-1/b\\_Cisco\\_UCS\\_Admin\\_Mgmt\\_Guide\\_3\\_1/b\\_UCSM\\_Admin\\_Mgmt\\_Guide\\_chapter\\_01.html](https://www.cisco.com/c/en/us/td/docs/unified_computing/ucs/ucs-manager/GUI-User-Guides/Admin%20Management/3-1/b_Cisco_UCS_Admin_Mgmt_Guide_3_1/b_UCSM_Admin_Mgmt_Guide_chapter_01.html)  
[https://www.cisco.com/c/en/us/td/docs/switches/datacenter/mds9000/sw/8\\_x/config/security/cisco\\_mds9000\\_security\\_config\\_guide\\_8x/configuring\\_users\\_and\\_common\\_roles.html#con\\_1422305](https://www.cisco.com/c/en/us/td/docs/switches/datacenter/mds9000/sw/8_x/config/security/cisco_mds9000_security_config_guide_8x/configuring_users_and_common_roles.html#con_1422305)

NEW QUESTION 535

Refer to the exhibit.

```
sudo -i
tcpdump -i Eth1-47 -w /tmp/ospf_traffic.pcap ip proto 89
```

A network engineer is using tcpdump to capture a snapshot of OSPF-related traffic on a specific Cisco NX-OS switch port. For security reasons, the capture must be taken using an embedded container that is already deployed on the Cisco Nexus device. Which command completes the script?

- A. guestshell
- B. guestshell-bash
- C. run guestshell
- D. run bash

Answer: A

NEW QUESTION 539

.....

## Thank You for Trying Our Product

### We offer two products:

1st - We have Practice Tests Software with Actual Exam Questions

2nd - Questions and Answers in PDF Format

### 350-601 Practice Exam Features:

- \* 350-601 Questions and Answers Updated Frequently
- \* 350-601 Practice Questions Verified by Expert Senior Certified Staff
- \* 350-601 Most Realistic Questions that Guarantee you a Pass on Your First Try
- \* 350-601 Practice Test Questions in Multiple Choice Formats and Updates for 1 Year

**100% Actual & Verified — Instant Download, Please Click**  
**[Order The 350-601 Practice Test Here](#)**