



## **Cisco**

### **Exam Questions 200-901**

Developing Applications and Automating Workflows using Cisco Core Platforms (DEVASC)

## About ExamBible

*[Your Partner of IT Exam](#)*

## Found in 1998

ExamBible is a company specialized on providing high quality IT exam practice study materials, especially Cisco CCNA, CCDA, CCNP, CCIE, Checkpoint CCSE, CompTIA A+, Network+ certification practice exams and so on. We guarantee that the candidates will not only pass any IT exam at the first attempt but also get profound understanding about the certificates they have got. There are so many alike companies in this industry, however, ExamBible has its unique advantages that other companies could not achieve.

## Our Advances

### \* 99.9% Uptime

All examinations will be up to date.

### \* 24/7 Quality Support

We will provide service round the clock.

### \* 100% Pass Rate

Our guarantee that you will pass the exam.

### \* Unique Gurantee

If you do not pass the exam at the first time, we will not only arrange FULL REFUND for you, but also provide you another exam of your claim, ABSOLUTELY FREE!

### NEW QUESTION 1

- (Exam Topic 2)

Refer to the exhibit.

```
1  #!/bin/bash
2  apt install nginx
3  export AVAILABLE_SITES_DIR = '/etc/nginx/sites-available'
4  export ENABLED_SITES_DIR = '/etc/nginx/sites_enabled'
5  cd /opt/nginx
6  cat sites.txt | while read site;
7      do
8      cp template.conf "$AVAILABLE_SITES_DIR/$site";
9      ln -s "$AVAILABLE_SITES_DIR/$site" "$ENABLED_SITES_DIR";
10     chown www-data:www-data "$AVAILABLE_SITES_DIR/$site";
11 done
```

An engineer must configure a load balancer server. The engineer prepares a script to automate workflow by using Bash. The script install the nginx package, moves to the /opt/nginx directory, and reads the sites M We (or further processing Based on the script workflow, which process is being automated within the loop by using the information mi sites txt?

- A. creating a new Me Based on template .conf in the /etc/nginx/sites\_enabled directory for each lie in the sites txt fil
- B. and then changing the file execution permission.
- C. creating a Me per each the in sites txt with the information in template con
- D. creating a link for the previously created fil
- E. and then changing the ownership of the created files
- F. using the content of the file to create the template conf fil
- G. creating a link from the created file to the/etc/nginx/files.enable
- H. and then changing the file execution permissions.
- I. using the information in the file to create a set of empty files in the /etchginx/sites\_enabled directory and then assigning the owner of the file.

**Answer: B**

### NEW QUESTION 2

- (Exam Topic 2)

A developer needs a list of clients connected to a specific device in a Meraki network. After making a REST API call, the developer receives an unfamiliar response code. Which Cisco DevNet resource should be used to identify the meaning of the response code?

- A. API documentation
- B. Sandbox
- C. Learning Labs
- D. Code Exchange

**Answer: A**

### NEW QUESTION 3

- (Exam Topic 2)

What is a capability of the NETCONF protocol?

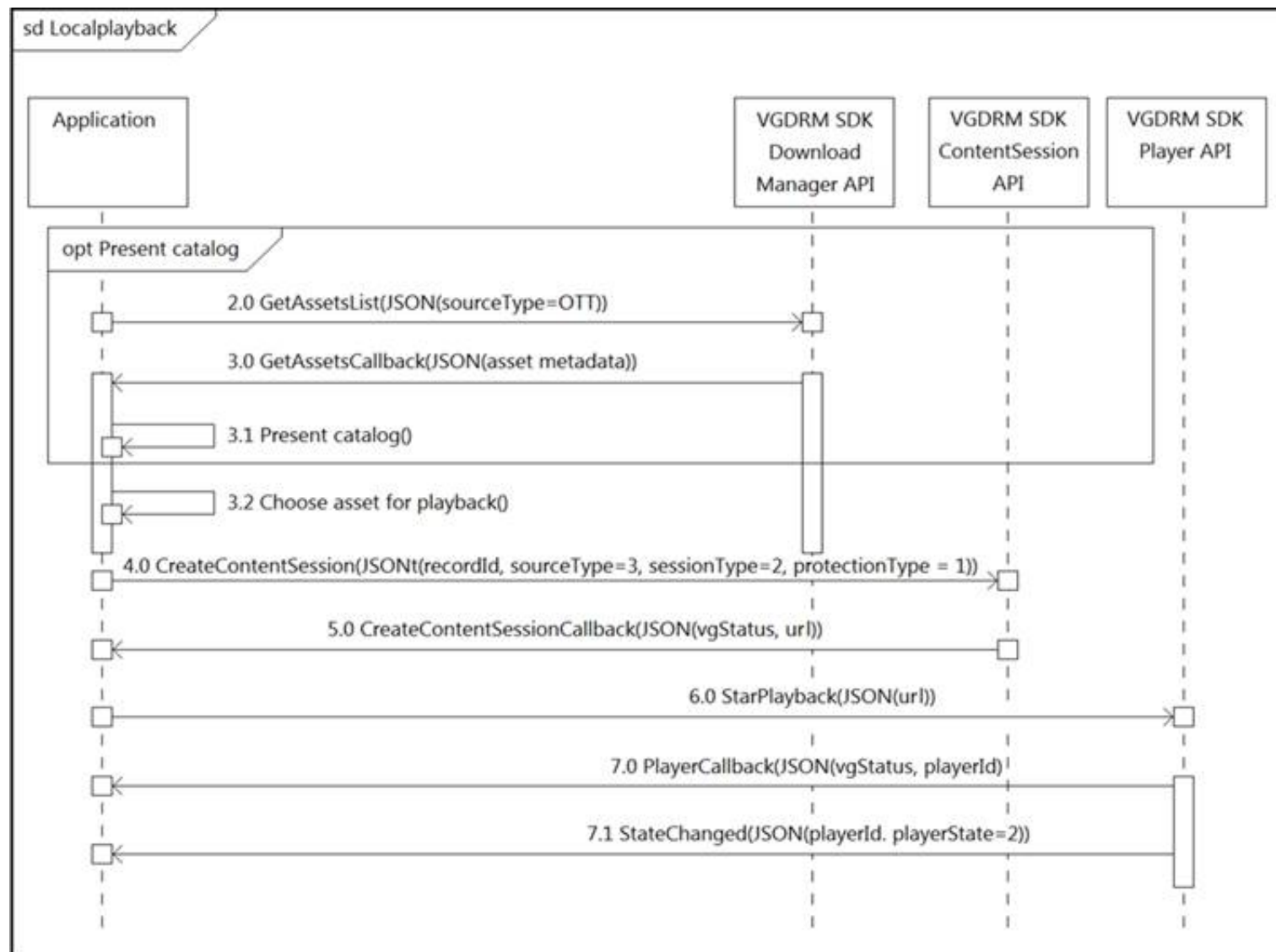
- A. allows Python scripts to be executed externally from a network device
- B. uses JSON to encode data in its content layer
- C. allows XML messages to be exchanged via the SSH protocol
- D. exposes a web-based interface

**Answer: C**

### NEW QUESTION 4

- (Exam Topic 2)

Refer to the exhibit.



What do all the calls shown in the sequence diagram have in common?

- A. All the calls are optional.
- B. All the calls are asynchronous.
- C. All the calls are synchronous.
- D. All the calls depend on the catalog.

**Answer: D**

#### NEW QUESTION 5

- (Exam Topic 2)

Which application should be used to externally access all applications deployed in the same host machine with a single public IP address and port, when each application listens on different local ports?

- A. reverse proxy
- B. load balancer
- C. DNS
- D. firewall

**Answer: D**

#### NEW QUESTION 6

- (Exam Topic 2)

Which protocol runs over TCP port 23?

- A. SSH
- B. NETCONF
- C. HTTP
- D. Telnet

**Answer: D**

#### NEW QUESTION 7

- (Exam Topic 2)

Drag and drop the Dockerfile instructions from the left onto the descriptions on the right. Not all options are used.

FROM ubuntu:12.04	informs Docker that the container listens on the specified network port(s) at runtime
VOLUME["/var/www","/var/log/apache2","/etc/apache2"]	creates a mount point with the specified name
RUN apt-get update && apt-get install -y --force-yes apache2	configures a container that runs as an executable
ENTRYPOINT["/usr/sbin/apache2ctl","-D","FOREGROUND"]	must be the first instruction in the Docker file
EXPOSE 1521	

- A. Mastered
- B. Not Mastered

Answer: A

Explanation:

Diagram Description automatically generated

NEW QUESTION 8

- (Exam Topic 2)

A developer has created a new image to use in a Docker build and has added a tag for the image by using the command:

\$ docker tag 84fe411926287 local/app:0.4

Which command must be executed next to build the Docker image using the tag?

- A. \$ docker build -p local/app:0.4
- B. \$ docker run -t local/app:0.4
- C. \$ docker run -p local/app:0.4
- D. \$ docker build -t local/app:0.4

Answer: D

NEW QUESTION 9

- (Exam Topic 2)

Refer to the exhibit.

```
1  - hosts: servers
2    tasks:
3
4      - name: task1
5        systemd:
6          name: webexbot
7          state: stopped
8
9      - name: task2
10       apt:
11         name: teamsbot
12
13     - name: task3
14       apt:
15         name: webexbot
16         state: absent
17         purge: yes
```

A developer must integrate a bot with an internal communication app. The developer wants to replace the webexbot package with the teamsbot package by using Ansible and prepares a playbook In the first two tasks, the playbook stops the webexbot and verifies that the teamsbot is installed. What is accomplished in the last task of the workflow when the developer runs the Ansible playbook?

- A. stops the webexbot service and uninstals it and retains its configuration files
- B. installs the webexbot and retains the configuration files
- C. uninstalls the webexbot package and removes its configuration files
- D. searches whether the purge package is available in the repository and uninstalls the webexbot package

Answer: C

NEW QUESTION 10

- (Exam Topic 2)

Refer to the exhibit.

```
1  from requests import request
2  from requests.auth import HTTPBasicAuth
3  from sys import argv
4  url = "https://" + argv[1] + ":443/restconf/data/native/ip/route"
5  auth = HTTPBasicAuth('developer', 'Cisc012345')
6  payload = {
7      "Cisco-IOS-XE-native:route": {
8          "ip-route-interface-forwarding-list": [
9              {
10                 "prefix": argv[2],
11                 "mask": argv[3],
12                 "fwd-list": [
13                     {
14                         "fwd": "GigabitEthernet2",
15                         "interface-next-hop": [
16                             {
17                                 "ip-address": argv[4]
18                             }
19                         ]
20                     }
21                 ]
22             }
23         ]
24     }
25 }
26 headers = {
27     'Content-Type': 'application/yang-data+json',
28     'Accept': 'application/yang-data+json',
29 }
30 response = request("PATCH", url, auth=auth, headers=headers, json = payload,
31                     verify=False)
```

A network engineer must change the configuration on devices daily. The Python script must collect CLI arguments from the user, organize data according to the Cisco-IOS-XE-native YANG model, and utilize Cisco REST APIs to make the configuration. Which workflow is being automated by the Python script?

- A. updating an existing route on the device
- B. adding a new route to a device
- C. including a route on the device and overwriting the current routes
- D. deleting the route that is passed through the command-line variables

**Answer: A**

#### NEW QUESTION 10

- (Exam Topic 2)

Access to the management interface of devices must be restricted by using SSH and HTTPS. Which two ports must be included in the ACLs for the protocols to work? (Choose two.)

- A. 22
- B. 23
- C. 80
- D. 443
- E. 880

**Answer: AD**

#### NEW QUESTION 11

- (Exam Topic 2)

A company wants to accelerate the adoption of technologies that will simplify its operations. Staff have different skill levels and are looking for a single site to find easy-to-consume beginner, intermediate, and advanced multidomain use cases. Which site should be used?

- A. DevNet Ecosystem Exchange
- B. DevNet Automation Exchange
- C. DevNet Creations
- D. DevNet Support Forum

**Answer: D**

#### NEW QUESTION 13

- (Exam Topic 2)

Refer to the exhibit.



```

1 def enable_function(if_name, if_status, if_type):
2     headers = {'Accept': 'application/yang-data+json',
3               'Content-Type': 'application/yang-data+json'}
4     payload = {
5         "ietf-interfaces:interface": {
6             "name": if_name,
7             "enabled": if_status,
8             "type": if_type,
9         }
10    }
11    base_url = 'https://192.168.1.1:8443'
12    restconf_url = '/restconf/data/ietf-interfaces:interfaces/interface'
13
14    res = requests.put(f'{base_url}{restconf_url}={if_name}',
15                      headers=headers, json=payload,
16                      auth=('cisco', 'secret'), verify=False)

```

A network engineer wants to automate the port enable/disable process on specific Cisco switches. The engineer creates a script to send a request through RESTCONF and uses ietf as the YANG model and JSON as payload. Which command enables an interface named Loopback1?

- A. enable\_function(Loopback1, true, 'iana-if-type:softwareLoopback')
- B. enable\_function('iana-if-type:softwareLoopback', Loopback1, true,)
- C. def enable\_function('iana-if-type:softwareLoopback', Loopback1, false,)
- D. def enable\_function(Loopback1, true, 'iana-if-type:softwareLoopback')

**Answer: D**

### NEW QUESTION 18

- (Exam Topic 2)

While developing a real-Time VoIP application on a Cisco Webex platform, users report that their voice gets chopped or parts of the conversation drop out. Which network constraint is impacting the application?

- A. latency
- B. jitter
- C. capacity
- D. delay

**Answer: B**

### NEW QUESTION 20

- (Exam Topic 2)

Before which process is code review performed when version control is used?

- A. Branching code
- B. Merge of code
- C. Checkout of code
- D. Committing code

**Answer: D**

### NEW QUESTION 24

- (Exam Topic 2)

Refer to the exhibit.

```

import requests
from requests.auth import HTTPBasicAuth
from dnac_config import DNAC, DNAC_PORT, DNAC_USER, DNAC_PASSWORD

def get_auth_token():
    url = 'https://sandboxdnac.cisco.com/dna/system/api/v1/auth/token'
    # API Endpoint: requires POST method
    

def get_device_list():
    """
    Building out function to retrieve list of devices. Using requests.get to make a call
    to the network de-vice Endpoint
    """
    token = get_auth_token() # Get Token
    url = 'https://sandboxdnac.cisco.com/api/v1/network-device'
    hdr = {'x-auth-token': token, 'content-type': 'application/json'}
    resp = requests.get(url, headers=hdr)
    device_list = resp.json()
    print_device_list(device_list)

if __name__ == "__main__":
    get_device_list()

```

A developer creates a script to obtain a list of devices by using the Cisco DNA Center API. The remote server authorizes the request only if an authentication token is supplied in the headers. A function named get\_auth\_token() must retrieve a valid token by using HTTP Basic Authentication. Which code must be added to complete the get\_auth\_token() function?

- A. resp = requests.post(url, auth=HTTPBasicAuth(DNAC\_USER, DNAC\_PASSWORD)) token = resp.json()['Token']return token
- B. resp = requests.post(url, auth=(DNAC\_USER, DNAC\_PASSWORD)) token = resp.json ()['Token']return token
- C. resp = http.post(url, auth=HTTPBasicAuth(DNAC\_USER, DNAC\_PASSWORD)) token = resp.json()['Token']return token
- D. resp = http.post(url, auth=(DNAC\_USER, DNAC\_PASSWORD)) token = resp.json()['Token']return token

**Answer:** A

#### NEW QUESTION 26

- (Exam Topic 2)

What are two considerations when selecting the "best route" for a network device to reach its destination? (Choose two.)

- A. MAC address
- B. metrics
- C. administrative distance
- D. IP address
- E. subnet mask

**Answer:** BC

#### NEW QUESTION 27

- (Exam Topic 2)

A new application is being developed with specific platform requirements. The platform and application deployment and the ongoing platform management must be fully automated. The application includes a large database component that has significant disk I/O requirements. Which application deployment type meets the requirements?

- A. Python virtual environment
- B. virtual machine
- C. bare metal
- D. container

**Answer:** B

#### NEW QUESTION 28

- (Exam Topic 2)

How do XML and JSON compare regarding functionality?

- A. JSON natively supports arrays and XML does not natively support arrays.
- B. XML provides support for mapping data structures into host languages than JSON.
- C. XML provides more human readability than JSON.
- D. JSON provides support for data types than XML.

**Answer:** A

#### NEW QUESTION 29

- (Exam Topic 2)

What is a benefit of test-driven development?

- A. early customer involvement
- B. increased code quality
- C. faster releases that have minimal features
- D. strict adherence to product requirements

**Answer:** D

#### NEW QUESTION 31

- (Exam Topic 2)

Which API must an engineer use to change a netmask on a Cisco IOS XE device?

- A. Meraki
- B. RESTCONF/YANG
- C. SD-WAN
- D. DNAC

**Answer:** B

#### NEW QUESTION 36

- (Exam Topic 2)

What is a benefit of organizing code into modules?

- A. improves overall performance
- B. reduces the length of code
- C. enables code to be multifunctional
- D. enables the reuse of code

**Answer:** D



#### NEW QUESTION 39

- (Exam Topic 2)

In which two ways is an application characterized when interacting with a webhook? (Choose two.)

- A. codec
- B. receiver
- C. transaction monitor
- D. processor
- E. listener

**Answer:** BE

#### NEW QUESTION 42

- (Exam Topic 2)

What is the difference between YAML and JSON data structure?

- A. YAML uses spaces; JSON uses parentheses
- B. YAML uses indentation; JSON uses brackets and braces
- C. YAML uses brackets and braces; JSON uses indentation
- D. YAML uses parentheses; JSON uses spaces

**Answer:** A

#### NEW QUESTION 46

- (Exam Topic 2)

A developer creates a web application that receives a username and password and uses them to sync the credentials to other services through HTTPS. API keys to services are part of the configuration files of the application, but the credentials to the database that stores the synchronization logs are obtained through an external vault service. What is the security issue in this scenario?

- A. Communication between the application and the services is not encrypted.
- B. The database credentials should be stored in the configuration files so that they are secured on the same server.
- C. The API keys are stored in the configuration files but should be stored in the vault service.
- D. The synchronization logs should be encrypted and not stored in a relational database.

**Answer:** A

#### NEW QUESTION 51

- (Exam Topic 2)

What are two use cause where webhooks are effective? (Choose two.)

- A. Close a session with a web server after a specific amount of time.
- B. Filter out information from a response to an API call
- C. Change the response format or content type of an API call.
- D. Inform a previously defined chat channel after a deployment fate.
- E. Send an email to a customer of an online store after payment is complete

**Answer:** DE

#### NEW QUESTION 53

- (Exam Topic 2)

Refer to the exhibit.

```
# base image
FROM alpine

# Install python and pip
RUN apk add --update py2-pip

# Install python modules needed by the python app
COPY requirements.txt /usr/src/app/
RUN pip install --no-cache-dir -r /usr/src/app/requirements.txt

#copy local files for the app to run
COPY app.py /usr/src/app/
COPY templates/index.html /usr/src/app/templates/

EXPOSE 8080

#run the application
CMD ["python", "/usr/src/app/app.py"]
```

Which function does the EXPOSE line perform when building an image from this Dockerfile?

- A. Local port 8080 of the container that launched with this docker image is accessible from co-hosted containers and external clients.
- B. Local port 8080 is not reachable at all because no IP address is specified along with the EXPOSE command of the Dockerfile.
- C. Local port 8080 is accessible from other containers running on the same docker host as the container that launched with this docker image.
- D. Local port 8080 of the container that launched with this docker image is accessible to external clients.

**Answer:** C

**Explanation:**

By default, the EXPOSE instruction does not expose the container's ports to be accessible from the host. In other words, it only makes the stated ports available for inter-container interaction.

Whereas publishing a port using either -P or -p exposes it, exposing a port using EXPOSE or --expose does not publish it.

So, while exposed ports can only be accessed internally, published ports can be accessible by external containers and services.

<https://www.whitesourcesoftware.com/free-developer-tools/blog/docker-expose-port/>

**NEW QUESTION 56**

- (Exam Topic 2)

Which tool is used to block all traffic to the domain by using a single API call?

- A. Cisco ISE
- B. Cisco Firepower
- C. Cisco AMP
- D. Cisco Umbrella

**Answer:** B

**NEW QUESTION 61**

- (Exam Topic 2)

Drag and drop the code snippets from the bottom to the blanks in the code to complete the HTTP response. Not all options are used.

Request URL: http://www.example.com/

: GET

: 200 OK

Remote Address: [2606:2800:220:1:248:1893:25c8:1946]:80

Referrer Policy: strict-origin-when-cross-origin

Response Headersview source

Accept-Ranges: bytes

Age: 396561

Cache-Control: max-age=604800

: gzip

Content-Length: 648

: text/html; charset=UTF-8

Date: Sat, 20 Nov 2020 20:49:34 GMT

Etag: "3147526947+ident"

Expires: Sat, 21 Nov 2020 20:49:34 GMT

Last-Modified: Thu, 17 Oct 2019 07:18:26 GMT

Server: ECS (dna/63AA)

Vary: Accept-Encoding

X-Cache: HIT

Request Headersview source

Accept: text/html,application/xhtml+xml,application/xml;q=0.9,  
image/avif,image/webp,image/apng,\*/\*;q=0.8,application/signed-exchange;v=b3;q=0.9

Accept-Encoding: gzip, deflate

Accept-Language: en-US,en;q=0.9

Request Type	Request Control
Status Code	Content-Type
Request Method	Content Code
Content-Encoding	

- A. Mastered
- B. Not Mastered

**Answer:** A

**Explanation:**

Graphical user interface, text, application Description automatically generated

**NEW QUESTION 62**

- (Exam Topic 2)

How does a synchronous API request differ from an asynchronous API request?

- A. clients receive responses with a task id for further processing
- B. clients subscribe to a webhook for operation results
- C. clients are able to access the results immediately
- D. clients poll for the status of the execution of operations

**Answer:** C

NEW QUESTION 67  
- (Exam Topic 2)

`class Native.Interface.FastEthernet`

Bases: Entity

Class Hierarchy: Native Interface FastEthernet

This class represents configuration data.

FastEthernet IEEE 802.3

name(key)

type: str

pattern: ([0-9]/)([0-9]/)([1-3][0-9]|4[0-8]|([0-9])\([0-9]+\))?

description

Interface specific description

type: str

pattern: \*

flowcontrol

Configure flow operation

type: Flowcontrol

isis

IS-IS commands

type: Isis

keepalive

Enable keepalive

type: bool

keepalive\_settings

type: KeepaliveSettings

Refer to the exhibit. Drag and drop the code snippets from the bottom to the blanks in the code to enable keepalive for the FastEthernet 2/0 interface. Not all options are used.

```
from ydk.services import CRUDService
from ydk.providers import NetconfServiceProvider as nc
from ydk.models.cisco_ios_xe import Cisco_IOS_XE_native as model
ip = '10.10.20.48'
prctl = 'ssh'
user = 'developer'
psw = 'P@s$W0rD'
port = 830
provider = nc(address=ip, port=port, username=user, password=psw, protocol=prctl)
crud = CRUDService()

interface.name = '2/0'

if interface.data:
    print('Keepalive is enabled.')
else:
    print('Keepalive is not enabled.')
```

interface\_data = crud.update(provider, interface)

interface.keepalive = True

interface\_data = crud.read(provider, interface)

interface = model.Native.Interface.FastEthernet()

interface.FastEthernet.keepalive\_settings.keepalive = True

interface = model.Native.Interface()

- A. Mastered
- B. Not Mastered

Answer: A

Explanation:

```
from ydk.services import CRUDService
from ydk.providers import NetconfServiceProvider as nc
from ydk.models.cisco ios xe import Cisco IOS XE native as model
ip = '10.10.20.48'
prctl = 'ssh'
user = 'developer'
psw = 'P@s$W0rD'
port = 830
provider = nc(address=ip, port=port, username=user, password=psw, protocol=prctl)
crud = CRUDService()

interface = model.Native.Interface.FastEthernet()
interface.name = '2/0'

interface.keepalive = True

interface_data = crud.read(provider, interface)

if interface_data:
    print('Keepalive is enabled.')
else:
    print('Keepalive is not enabled.')
```

```
interface_data = crud.update(provider, interface)
```

```
interface.FastEthernet.keepalive_settings.keepalive = True
```

```
interface = model.Native.Interface()
```

#### NEW QUESTION 68

- (Exam Topic 2)

A local Docker alpine image has been created with an image ID of a391665405fe and tagged as “latest”. Which command creates a running container based on the tagged image, with the container port 8080 bound to port 80 on the host?

- A. docker build -p 8080:80 alpine:latest
- B. docker exec -p 8080:80 alpine:latest
- C. docker start -p 8080:80 alpine:latest
- D. docker run -p 8080:80 alpine:latest

**Answer:** D

#### Explanation:

[https://docs.docker.com/get-started/02\\_our\\_app/](https://docs.docker.com/get-started/02_our_app/)

#### NEW QUESTION 71

- (Exam Topic 2)

What are two benefits of using VLANs? (Choose two.)

- A. limits the devices that can join the network
- B. segments the broadcast domain
- C. extends the broadcast domain
- D. allows all network devices to be accessible from any host on the network
- E. enables the logical grouping of devices that belong to different Layer 2 devices

**Answer:** BE

#### NEW QUESTION 74

- (Exam Topic 2)

A company is adopting DevOps as part of an internal transformation, and is reviewing the success of the first deployments. Developers and engineers are working together to resolve any resulting issues. However, this new way of working has increased overhead, and the team is finding it difficult to complete releases in time. Which area of the CALMS framework must the company target for improvement?

- A. Collaboration
- B. Lean
- C. Sharing
- D. Measurement

**Answer:** B

#### Explanation:

Reference: <https://blog.sonatype.com/principle-based-devops-frameworks-calms>

#### NEW QUESTION 78

- (Exam Topic 2)

Refer to the exhibit.



```
FROM nginx

ARG DELAY="30"
ENV INITIAL_DELAY=${DELAY}

ENTRYPOINT ["/bin/sh"]

CMD ["-c", "/bin/sleep ${INITIAL_DELAY} && nginx -g 'daemon off;']
```

Which command, including arguments, is executed when the container starts?

- A. /bin/sh -c "/bin/sleep 30 && nginx -g 'daemon off;'"
- B. /bin/sh -c "/bin/sleep 10 && nginx -g 'daemon off;'"
- C. /bin/bash -c "/bin/sleep 30 && nginx -g 'daemon off;'"
- D. /bin/sh -c "/bin/sleep 30" && nginx -g 'daemon off;'

**Answer:** A

#### NEW QUESTION 79

- (Exam Topic 2)

An engineer must configure Cisco Nexus devices and wants to automate this workflow. The engineer enables the Cisco NX-OS REST API to configure the devices by using an Ansible playbook. Before running the code, which resource must be used to verify that the code works correctly?

- A. Cisco NX-OS SDK
- B. Cisco Learning Labs
- C. Cisco Code Exchange
- D. Cisco Modeling Labs

**Answer:** A

#### NEW QUESTION 82

- (Exam Topic 2)

Refer to the exhibit.



OWASP threat does this example demonstrate?

- A. Broken access control
- B. SQL injection
- C. Man-in-the-middle
- D. Cross-site-scripting

**Answer:** D

#### NEW QUESTION 83

- (Exam Topic 2)

What is a benefit of model-driven programmability?

- A. It addresses the static architecture of traditional networks being decentralized and complex.
- B. By modeling data, it ensures that vast quantities of data are usable for monitoring.
- C. It provides a programmatic and standards-based way of writing configurations to any network device.
- D. It simplifies management and operations by decoupling the networking hardware from its control mechanism.

**Answer:** D

#### NEW QUESTION 86

- (Exam Topic 2)

Refer to the exhibit.



### Local File Attachments

To send local file attachments, simply post a message by including your access token in the Authorization header and the path to your local file with the files parameter. Optionally, you can also include a plain-text message with the attachment by using the text parameter. When uploading files directly from your local filesystem, your request will need to be a multipart/form-data request rather than JSON

```
curl --request POST \
  --form "files=@/home/desktop/example.png;type=image/png" \
  --form "roomId=Y21zY2....." \
  --form "text=example attached" \
  https://webexapis.com/v1/messages
```

A developer needs to upload a local file by using the REST API. The developer gathers information according to the documentation and sends the request by using the cURL command in the exhibit but gets an error code. Which action should be followed to get valid response?

- A. change content type as JSON
- B. add the authorization header with the access token
- C. add a username-password combination to request command
- D. change request method as GET

**Answer: B**

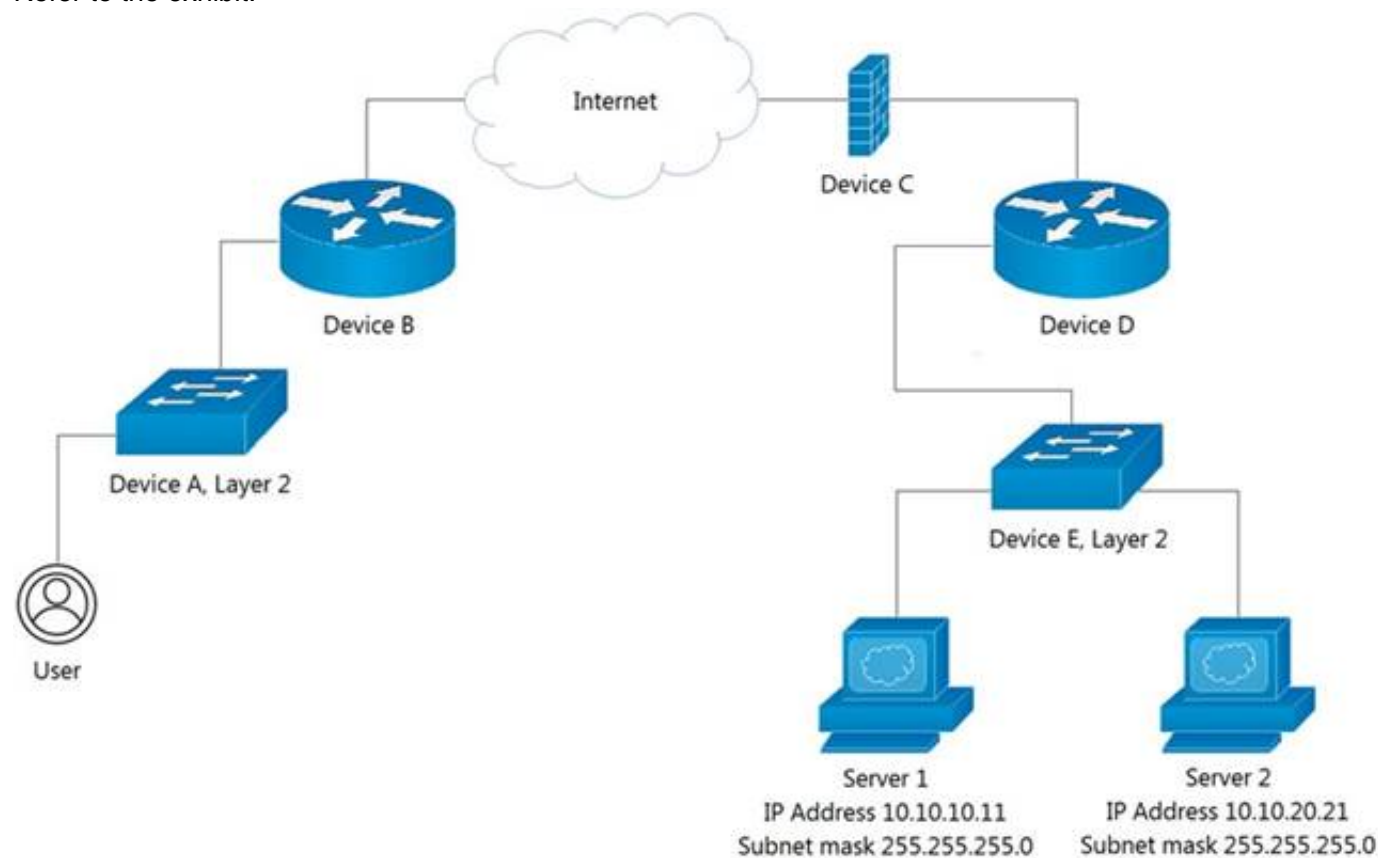
#### Explanation:

Reference: <https://developer.webex.com/docs/api/basics>

### NEW QUESTION 88

- (Exam Topic 2)

Refer to the exhibit.



Which device limits traffic between server 1 and server 2?

- A. Device B
- B. Device C
- C. Device D
- D. Device E

**Answer: D**

### NEW QUESTION 91

- (Exam Topic 2)

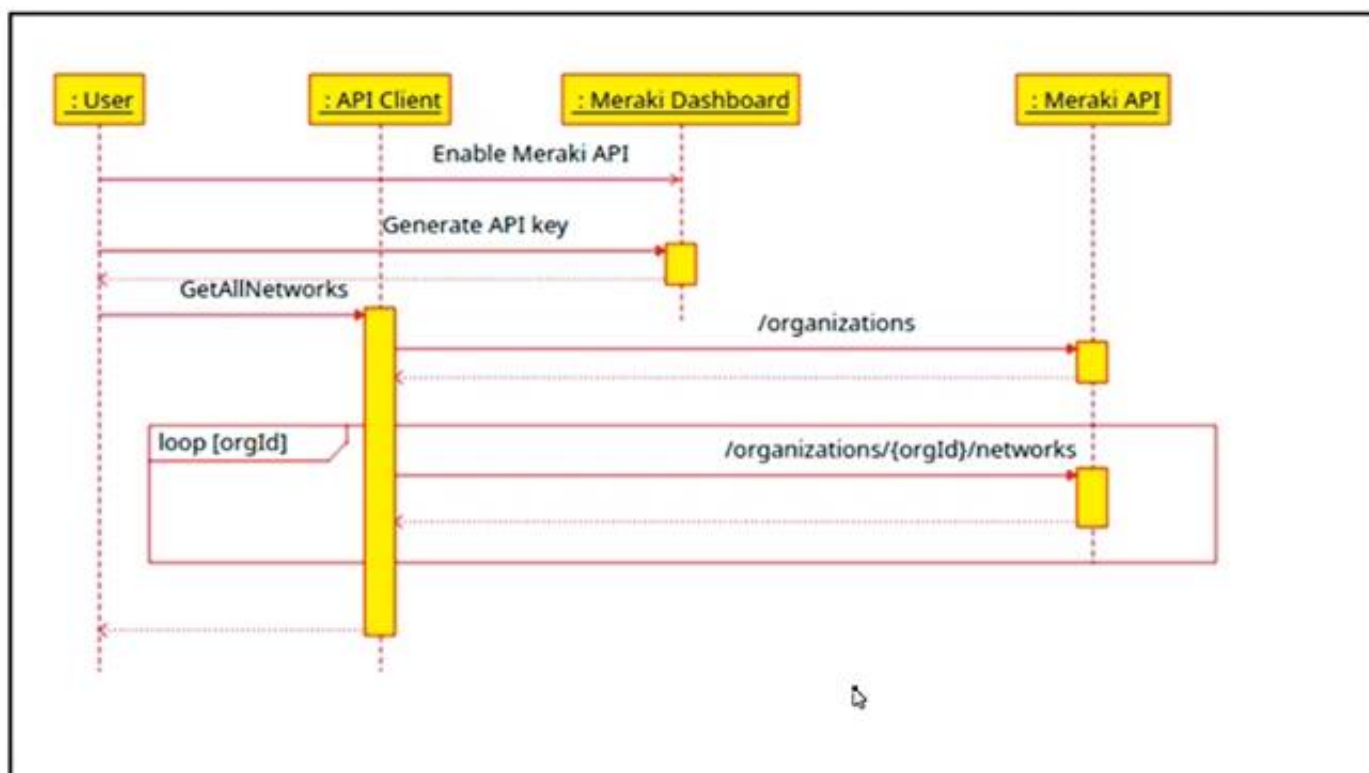
What is used in JSON to represent a Python Tuple?

- A. Object
- B. Array
- C. Dict
- D. Collection

**Answer: B**

### NEW QUESTION 95

- (Exam Topic 2)  
Refer to the exhibit.



The Cisco Meraki API manages two organizations. In each organization, two independent networks are defined. How many calls to the /organizations/(orgId)networks endpoint will be run parallel by the GetAllNetwork function of the API client?

- A. 1
- B. 2
- C. 4

**Answer: C**

#### NEW QUESTION 100

- (Exam Topic 2)  
Refer to the exhibit.



Which JSON snippet configures a new interface according to YANG model?

- A)
- ```

{
  "ietf-interfaces:interface": {
    "name": "Loopback100",
    "enabled": true,
    "ietf-ip:ipv4": {
      "address": [
        {
          "ip": "10.255.254.1",
          "netmask": "255.255.255.0"
        }
      ]
    }
  }
}
    
```
- B)

```

“ietf-interfaces”: {
  interface: {
    “name”: “Loopback100”,
    “enabled”: true,
    “ietf-ip”: {
      ipv4: {
        “address”: [
          {
            “ip”: “10.255.254.1”,
            “netmask”: “255.255.255.0”
          }
        ]
      }
    }
  }
}

```

C)

```

“ interface” {
  “name”: “Loopback100”,
  “enabled”: true,
  “ipv4”: {
    “address”: [
      {
        “ip”: “10.255.254.1”,
        “netmask”: “255.255.255.0”
      }
    ]
  }
}

```

D)

```

“ietf-interfaces:interface”: {
  “name”: “Loopback100”,
  “enabled”: true,
  “ietf-ip:ipv4:address”: [
    {
      “ip”: “10.255.254.1”,
      “netmask”: “255.255.255.0”
    }
  ]
}

```

- A. Option A
- B. Option B
- C. Option C
- D. Option D

**Answer: B**

#### NEW QUESTION 105

- (Exam Topic 2)

Refer to the exhibit.

```

--- README.md-repo 2019-10-06 21:15:59.000000000 +0100
+++ README.md      2019-10-06 21:07:35.000000000 +0100
@@ -88,8 +88,6 @@
  \ \
-
-
  ## Troubleshooting

  ### CMake
@@ -162,4 +160,13 @@

  ## References

+### Mosquitto
+
+* [github] (https://github.com/eclipse/mosquitto)
+* [homepage] (https://mosquitto.org)
+
+### MQTT
+
+* [organisation] (http://mgtt.org)
+

```

The output of the diff-u README.md-repo README.md command is shown. The original file was 165 lines long How many lines are in the edited copy of the file?

- A. 162
- B. 165
- C. 172
- D. 173

**Answer:** C

#### NEW QUESTION 108

- (Exam Topic 2)

What does a load balancer distribute in a network environment?

- A. outgoing connections to the network
- B. incoming traffic across multiple servers
- C. different TCP connections to the routers
- D. traffic in the network by leveraging the switch architecture

**Answer:** B

#### NEW QUESTION 110

- (Exam Topic 2)

What is a benefit of organizing into modules?

- A. improves collaboration of the development team
- B. makes it easier to deal with large and complex systems
- C. enables the code to be broken down into layers
- D. enables the inclusion of more programming languages in the code

**Answer:** B

#### Explanation:

From Wikipedia ([https://en.wikipedia.org/wiki/Modular\\_programming](https://en.wikipedia.org/wiki/Modular_programming)) "Modular programming is closely related to structured programming and object-oriented programming, all having the same goal of facilitating the construction of large software programs and systems by decomposition into smaller pieces."

#### NEW QUESTION 111

- (Exam Topic 2)

A file that already exists in a local repository is updated. Which command must be executed to ensure that the changes in the file are included in the next Git commit?

- A. git update
- B. git merge
- C. git add
- D. git rebase

**Answer:** A

#### NEW QUESTION 112

- (Exam Topic 2)

What are two key capabilities of Cisco Finesse? (Choose two.)

- A. Finesse includes an RPC API that enables the development of custom gadgets.
- B. Agents access Finesse from a browser without needing to install or configure anything on the client machine.
- C. Finesse automatically collects telemetry data
- D. An OpenDNS utility is preconfigured and ready to use on Finesse.
- E. Gadget containers provide a seamless experience in a single user interface.

**Answer:** BE

#### NEW QUESTION 116

- (Exam Topic 2)

How does a developer create and switch to a new branch called "my-bug-fix" to develop a product fix?

- A. git checkout -b my-bug-fix
- B. git branch -b my-bug-fix
- C. git branch my-bug-fix
- D. git checkout my-bug-fix

**Answer:** A

#### Explanation:

<https://www.shellhacks.com/git-create-new-branch-and-checkout/>

#### NEW QUESTION 117

- (Exam Topic 1)

What should a CI/CD pipeline aim to achieve?

- A. to allow manual testing before deployment



- B. to require minimal manual interaction
- C. to support new deployments on a fixed monthly schedule
- D. to provide a documented process for feedback

**Answer:** A

#### NEW QUESTION 119

- (Exam Topic 1)

Which two statements describe the traits of an asynchronous API call? (Choose two.)

- A. The order in which API calls return can be guaranteed
- B. A call to an API does not block the code, but rather it allows application processing to continue
- C. The end user can experience latency or performance lag while waiting for the API call to return
- D. Code execution blocks or waits for the call to an API to return.
- E. A callback function typically is used to process the response from an API call

**Answer:** BE

#### NEW QUESTION 122

- (Exam Topic 1)

Which action resolves a 401 error in response to an HTTP GET that is issued to retrieve statement using RESTCONF on a CSR 1000V?

- A. Change the HTTP method to PUT.
- B. Change the transport protocol to HTTPS.
- C. Check the MIMF types in the HTTP headers.
- D. Check the authentication credentials.

**Answer:** D

#### NEW QUESTION 127

- (Exam Topic 1)

What are two advantages of version control software? (Choose two.)

- A. It supports tracking and comparison of changes in binary formate files.
- B. It allows old versions of packaged applications to be hosted on the Internet
- C. It provides wiki collaboration software for documentation.
- D. It supports comparisons between revisions of source code files.
- E. It allows new team members to access the current code and history.

**Answer:** DE

#### NEW QUESTION 128

- (Exam Topic 1)

Which HTTP status Code means that the server cannot or will not process the request because of perceived client error?

- A. 100
- B. 203
- C. 303
- D. 400

**Answer:** D

#### NEW QUESTION 130

- (Exam Topic 1)

Drag and drop the capability on the left onto the Cisco compute management platform that supports the capability on the right.

|                                                                                                                                       |              |
|---------------------------------------------------------------------------------------------------------------------------------------|--------------|
| Multi-Cloud automation and orchestration platform for Cisco and third-party servers, networks, storage, and converged infrastructure. | UCS Manager  |
| Software as a Service Platform that enables Cisco infrastructure management, automation and orchestration from anywhere.              | UCS Director |
| Embedded software that enables Cisco server, fabric, and storage provisioning.                                                        | Intersight   |

- A. Mastered
- B. Not Mastered

**Answer:** A



**Explanation:**

Multi-Cloud automation and orchestration platform for Cisco and third-party servers, networks, storage, and converged infrastructure.

Embedded software that enables Cisco server, fabric, and storage provisioning.

Software as a Service Platform that enables Cisco infrastructure management, automation and orchestration from anywhere.

Multi-Cloud automation and orchestration platform for Cisco and third-party servers, networks, storage, and converged infrastructure.

Embedded software that enables Cisco server, fabric, and storage provisioning.

Software as a Service Platform that enables Cisco infrastructure management, automation and orchestration from anywhere.

**NEW QUESTION 131**

- (Exam Topic 1)

Which device is a system that monitors and controls incoming and outgoing network traffic based on predetermined security rules?

- A. Switch
- B. Router
- C. Firewall
- D. Load balancer

**Answer:** C

**NEW QUESTION 135**

- (Exam Topic 1)

Refer to the exhibit.

```
module ex-ethernet {
  namespace "http://example.com/Ethernet";
  prefix "eth";
  import ietf-interfaces {
    prefix if;
  }
  augment "/if:interfaces/if:interface" {
    when "if:type = 'ethernetCsmacd'";
    container ethernet {
      must "../if:location" {
        description
          "An Ethernet interface must specify the physical location of the ethernet hardware.";
      }
      choice transmission-params {
        case auto {
          leaf auto-negotiate {
            type empty;
          }
        }
        case manual {
          leaf duplex {
            type enumeration {
              enum "half";
              enum "full";
            }
          }
          leaf speed {
            type enumeration {
              enum "10Mb";
              enum "100Mb";
              enum "1Gb";
              enum "10Gb";
            }
          }
        }
      }
    }
  } // other ethernet specific params...
}
```

What is represented in this YANG module?

- A. interface management
- B. topology
- C. BGP
- D. OpenFlow

**Answer:** A

**NEW QUESTION 140**

- (Exam Topic 1)

In which situation would an edge computing solution be used?

- A. where low latency is needed
- B. where high CPU throughput is needed
- C. where fast memory is needed
- D. where high disk space is needed

**Answer:** A

#### NEW QUESTION 143

- (Exam Topic 1)

What are two characteristics of Bare Metal environments that are related to application deployment? (Choose two.)

- A. Provide the hypervisor to host virtual servers
- B. Specifically designed for container-based workloads.
- C. Provides workloads with access to hardware features
- D. Suitable for legacy application that do not support virtualization
- E. Not compatible with other cloud services such as PaaS or SaaS offerings.

**Answer:** CD

#### NEW QUESTION 145

- (Exam Topic 1)

Refer to the exhibit.

List the clients that have used this network in the timespan

##### HTTP REQUEST

**GET** /networks/ {networkId}/clients

##### PARAMETERS

**t0**

The beginning of the timespan for the data. The maximum lookback period is 31 days from today.

**timespan**

The timespan for which the information will be fetched. If specifying timespan, do not specify parameter t0. The value must be in seconds and be less than or equal to 31 days. The default is 1 day.

**perPage**

The number of entries per page returned. Acceptable range is 3 – 1000. Default is 10.

**startingAfter**

A token used by the server to indicate the start of the page. Often this is a timestamp or an ID but it is not limited to those. This parameter should not be defined by client applications. The link for the first, last, prev, or next page in the HTTP Link header should define it.

**endingBefore**

A token used by the server to indicate the end of the page. Often this is a timestamp or an ID but it is not limited to those. This parameter should not be defined by client applications. The link for the first, last, prev, or next page in the HTTP Link header should define it.

```
base_url = "https://api.meraki.com/api/v0"
network_id = "L_12345678910"
api_key = "1098hadpfsiapsf8ahf8ohp"
requests.<item 1> (
    <item 2> + "/<item 3>/" + <item 4>, "<item 5>",
    headers = {
        "X-Cisco-Meraki-API-Key": <item 6> ,
        "Content-Type": "<item 7>"
    },
    <item 8>={"<item 9>": <item 10>})
```

Drag and drop the code from the left code from the left onto the item number on the right to complete the Meraki code to obtain a list of client which have used this network.

|                  |           |
|------------------|-----------|
| params           | <item 1>  |
| networks         | <item 2>  |
| timespan         | <item 3>  |
| get              | <item 4>  |
| 432000           | <item 5>  |
| base_url         | <item 6>  |
| application/json | <item 7>  |
| network_id       | <item 8>  |
| clients          | <item 9>  |
| api_key          | <item 10> |

- A. Mastered
- B. Not Mastered

Answer: A

Explanation:

1 - d, 2 - f, 3 - b, 4 - h, 5 - i, 6 – j, 7 - g, 8 - a, 9 - c, 10 - e

NEW QUESTION 147

- (Exam Topic 1)

Before which process is code review performed when version control is used?

- A. committing code
- B. branching code
- C. merge of code
- D. checkout of code

Answer: C

NEW QUESTION 150

- (Exam Topic 1)

A Company is looking for cloud deployment which will use the on-premise infrastructure, is user self-service, and easy to scale. Which cloud solution should be selected for these requirements?

- A. multi
- B. public
- C. private
- D. hybrid

Answer: C

NEW QUESTION 154

- (Exam Topic 1)

Which CI/CD tool is an automation tool used to build, test, and deploy software?

- A. Nagios
- B. Gradle
- C. Jenkins
- D. Git

Answer: C

Explanation:

Reference:

<https://www.infoworld.com/article/3271126/what-is-cicd-continuous-integration-and-continuous-delivery-expla>



# NEW QUESTION 157

- (Exam Topic 1)

Refer to the exhibit.

```
$ diff -u5 fish.py cat.py
--- fish.py      2020-01-02 09:41:02.840000000 +0100
+++ cat.py       2020-01-02 09:41:06.8859999800 +0100
@@ -160,11 +160,12 @@

    @single_request_timeout.setter
    def single_request_timeout(self, value):
        """The timeout (seconds) for a single HTTP REST API request."""
        check_type(value, int, optional=True)
-       assert value is None or value > 0
+       if value is not None and value <= 0:
+           raise ValueError("single_request_timeout must be positive integer")
        self._single_request_timeout = value

    @property
    def wait_on_rate_limit(self)
        """Automatic rate-limit handling.
```

The output of a unified diff when comparing two versions of a python script is shown. Which two “single\_request\_timeout ()”

A.

```
file: cat.py

160
161     @single_request_timeout.setter
162     def single_request_timeout(self, value):
163         """The timeout (seconds) for a single HTTP REST API request."""
164         check_type(value, int, optional=True)
165         assert value is None or value > 0
166         if value is not None and value <= 0:
167             raise ValueError("single_request_timeout must be positive integer")
168         self._single_request_timeout = value
169
```

B.

```
file: fish.py

160
161     @single_request_timeout.setter
162     def single_request_timeout(self, value):
163         """The timeout (seconds) for a single HTTP REST API request."""
164         check_type(value, int, optional=True)
165         assert value is None or value > 0
166         self._single_request_timeout = value
167
```

C.

```
file: cat.py

160
161     @single_request_timeout.setter
162     def single_request_timeout(self, value):
163         """The timeout (seconds) for a single HTTP REST API request."""
164         check_type(value, int, optional=True)
165         if value is not None and value <= 0:
166             raise ValueError("single_request_timeout must be positive integer")
167         self._single_request_timeout = value
168
169
```

D.

```
file: fish.py

160
161     @single_request_timeout.setter
162     def single_request_timeout(self, value):
163         """The timeout (seconds) for a single HTTP REST API request."""
164         check_type(value, int, optional=True)
165         self._single_request_timeout = value
```

E.

```

file: cat.py
172
173     @single_request_timeout.setter
174     def single_request_timeout(self, value):
175         """The timeout (seconds) for a single HTTP REST API request."""
176         check_type(value, int, optional=True)
177         if value is not None and value <= 0:
178             raise ValueError("single_request_timeout must be positive integer")
179         self._single_request_timeout = value
180

```

- F. Option A
- G. Option B
- H. Option C
- I. Option D
- J. Option E

**Answer:** BC

#### NEW QUESTION 158

- (Exam Topic 1)

Refer to the exhibit.

```
docker run -p 3000:5000 f877cbf2ff33
```

A process on the host wants to access the service running inside this Docker container. Which port is used to make a connection?

- A. only outbound connections between 3000 and 5000 are possible
- B. port 3000
- C. any port between 3000 and 5000
- D. port 5000

**Answer:** B

#### NEW QUESTION 159

- (Exam Topic 1)

Refer to the exhibit.

```

def process_devices(dnac, token):
    url = "https://{}/api/v1/network-device".format(dnac['host'])
    headers["x-auth-token"] = token
    response = requests.get(url, headers=headers, verify=False)
    data = response.json()
    for item in data['response']:
        print(item["hostname"], " ", item["managementIpAddress"])

```

What is the function of the python script?

- A. Count and print the total number of available devices.
- B. Iterate over a list of network devices and write all device names and management IP addresses to an output file.
- C. Iterate over a list of network devices and write all device type and associated management IP address.
- D. For each device that is returned, display the device and, for each device, print the device name and management IP address.
- E. Loop through the returned list of network devices and, for each device, print the device name management IP address.

**Answer:** E

#### NEW QUESTION 162

- (Exam Topic 1)

Refer to Exhibit.

```

<books>
  <science>
    <biology>10.00</biology>
    <geology>9.00</geology>
    <chemistry>8.00</chemistry>
  </science>
  <math>
    <calculus>20.00</calculus>
    <algebra>12.00</algebra>
  </math>
</books>

```



Which JSON is equivalent to the XML-encoded data.

A)

```
{
  "books": {
    "science": {
      "biology": "10.00",
      "geology": "9.00",
      "chemistry": "8.00"
    },
    "math": {
      "calculus": "20.00",
      "algebra": "12.00"
    }
  }
}
```

B)

```
[ {
  "books": {
    "science": {
      "biology": "10.00",
      "geology": "9.00",
      "chemistry": "8.00"
    },
    "math": {
      "calculus": "20.00",
      "algebra": "12.00"
    }
  }
} ]
```

C)

```
{
  "books": [
    "science", {
      "biology": "10.00",
      "geology": "9.00",
      "chemistry": "8.00"
    },
    "math", {
      "calculus": "20.00",
      "algebra": "12.00"
    }
  ]
}
```

D)

```
{
  "books": [
    "science": {
      "biology": "10.00",
      "geology": "9.00",
      "chemistry": "8.00"
    },
    "math": {
      "calculus": "20.00",
      "algebra": "12.00"
    }
  ]
}
```

- A. Option A
- B. Option B
- C. Option C
- D. Option D

Answer: A

NEW QUESTION 165

- (Exam Topic 1)

How does requesting a synchronous API operation differ from requesting an asynchronous API operation?

- A. clients poll for the status of the execution of operations
- B. clients subscribe to a webhook for operation results
- C. clients can access the results immediately
- D. clients receive responses with a task id for further processing

Answer: C

NEW QUESTION 167

- (Exam Topic 1)

Drag and Drop the GIT commands from the left onto the right that add modified local files to a remote repository. Not all options are used

|                                 |                   |
|---------------------------------|-------------------|
| git push                        | Git command one   |
| git add .                       | Git command two   |
| git checkout -b "new branch"    | Git command three |
| git commit -m "this is my edit" |                   |
| git pull                        |                   |

- A. Mastered
- B. Not Mastered

Answer: A

Explanation:

git add .  
git commit -m "this is my edit" git push

NEW QUESTION 171

- (Exam Topic 1)

Which two query types does a client make to a DNS server? (Choose Two)

- A. AAAA
- B. ACK
- C. DISCOVER
- D. Inverse
- E. PTR

Answer: AE

NEW QUESTION 175

- (Exam Topic 1)

What is the purpose of a MAC address?

- A. To uniquely identify a router in a LAN
- B. To uniquely identify a network interface in a LAN
- C. To uniquely identify a device on the internet
- D. To uniquely identify a switch in a LAN

Answer: B

NEW QUESTION 178

- (Exam Topic 1)

Which principle is a value from the manifesto for Agile software development?

- A. adhering to a plan over responding to requirements
- B. detailed documentation over working software
- C. processes and tools over teams and inter actions

D. customer collaboration over contract negotiation

**Answer:** D

**Explanation:**

Reference: [https://www.cisco.com/c/dam/global/en\\_hk/solutions/collaboration/files/agile\\_product\\_development.pdf](https://www.cisco.com/c/dam/global/en_hk/solutions/collaboration/files/agile_product_development.pdf)

#### NEW QUESTION 183

- (Exam Topic 1)

Refer to the exhibit.

```
List the networks in a Meraki organization:

GET https://api.meraki.com/api/v0/organizations/<org_id>/networks
Response code: 200
Response body: [ {
  "id": <network_id>,
  "name": "Test Network",
  "organization_id": <new_org_id>,
  "type": "wireless",
  "timeZone": "America/Los_Angeles",
  "tags": " test "
} ]
```

Fill in the blanks to complete the cURL command to the list of networks in the Meraki organization with an id of 384279060

```
curl -X GET -L \
--url https://api.meraki.com/api/v0/ / / \
-H 'X-Cisco-Meraki-API-Key: $meraki_api_key'
```

A. Mastered

B. Not Mastered

**Answer:** A

**Explanation:**

```
"organization_id": <new_org_id>,
"type": "wireless",
"timeZone": "America/Los_Angeles",
"tags": " test "
} ]

t. Fill in the blanks to complete the cURL command to list the networks in the Meraki organization with an Id of 384279060:

meraki.com/api/v0/ organizations / 384279060 / networks \
ki-API-Key: $meraki_api_key
```

#### NEW QUESTION 188

- (Exam Topic 1)

The project is migrated to a new codebase, the “old\_project” directory must be deleted. The directory has multiple read-only files, and it must be deleted recursively without prompting for confirmation. Which bash command must be used?

- A. rm -rf old\_project
- B. rm -r old\_project
- C. rmdir -p old\_project
- D. rmdir old\_project

**Answer:** A

#### NEW QUESTION 192

- (Exam Topic 1)

Refer to the exhibit.



**URL:** https://<ASA\_IP>/api/access/global/rules

**Method:** POST

**Payload:**

```
{
  "destinationAddress": {
    "kind": "IPv4Address",
    "value": "10.1.1.1"
  },
  "remarks": [ ],
  "active": true,
  "permit": true,
  "sourceAddress": {
    "kind": "IPv4Address",
    "value": "192.168.1.1"
  }
}
```

**Response Status Code:** 400 Bad Request

```
{
  "messages": [
    {
      "level": "Error",
      "code": "JSON-PARSE-ERROR",
      "details": "Unexpected character ('\"' (code 34)):"
    }
  ]
}
```

What caused the error in this API request?

- A. The API resource does not support the POST operation
- B. The API resource does not support JSON format payloads.
- C. The submitted JSON payload includes a field that is not supported by the API resource.
- D. The submitted JSON payload has a formatting issue

**Answer:** D

#### NEW QUESTION 194

- (Exam Topic 1)

Which model-driven programmability protocol does Cisco IOS XE Software support?

- A. CORBA
- B. SSH
- C. gNMI
- D. SOAP

**Answer:** C

**Explanation:**

Reference:

[https://www.cisco.com/c/en/us/td/docs/ios-xml/ios/prog/configuration/1610/b\\_1610\\_programmability\\_cg/gnmi\\_](https://www.cisco.com/c/en/us/td/docs/ios-xml/ios/prog/configuration/1610/b_1610_programmability_cg/gnmi_)

#### NEW QUESTION 195

- (Exam Topic 1)

What are two advantages of YANG-based approaches for infrastructure automation? (Choose two.)

- A. directly maps to JavaScript
- B. multi-platform vendor abstraction
- C. designed to reflect networking concepts
- D. compiles to executables that run on network devices
- E. command line driven interface

**Answer:** BC

#### NEW QUESTION 198

- (Exam Topic 1)

Which status code is used by a REST API to indicate that the submitted payload is incorrect?

- A. A.-400B.403C.405D.429

**Answer:** A

**Explanation:**

Reference:

<https://community.cisco.com/t5/application-centric/apic-rest-api-produces-inconsistent-response/td-p/2758230>

NEW QUESTION 201  
- (Exam Topic 1)  
Refer to the exhibit.

### List Rooms

List rooms.

The `title` of the room for 1:1 rooms will be the display name of the other person.

By default, lists rooms to which the authenticated user belongs.

Long result sets will be split into [pages](#).

GET

`/v1/rooms`

#### Query Parameters

| Name                          | Description                                                        |
|-------------------------------|--------------------------------------------------------------------|
| <code>teamId</code><br>string | List rooms associated with a team, by ID.                          |
| <code>type</code><br>string   | List rooms by tape.<br><i>Possible values: direct, group</i>       |
| <code>sortBy</code><br>string | Sort results.<br><i>Possible values: id, lastactivity, created</i> |
| <code>max</code><br>number    | Limit the maximum number of rooms in the response.                 |
|                               | Default: <code>100</code>                                          |

Fill in the blank to complete the query parameter and value so that the result set is returned in reverse chronological order (most recent first) based on when message were entered.

HTTP GET /v1/rooms \_\_\_\_\_

- A. Mastered
- B. Not Mastered

Answer: A

Explanation:

HTTP GET /v1/rooms

NEW QUESTION 206  
- (Exam Topic 1)  
A function `my_func()` returns `True` when it executes normally. Which python snippet tests `my_func()`?

☒

```
def test_func(self):  
    self.assertTrue(my_func())
```

☐

```
def test_func(self):  
    self.assertRaises(my_func())
```

☐

```
def test_func(self):  
    self.assertEqual(my_func(), '{true}')
```

☐

```
def test_func(self):  
    self.assertFalse(my_func())
```

A. Option A



- B. Option B
- C. Option C
- D. Option D

**Answer:** B

#### NEW QUESTION 211

- (Exam Topic 1)

Which two types of NAT are used in a network? (Choose two.)

- A. Static NAT
- B. Normal NAT
- C. Multicast NAT
- D. Dynamic NAT
- E. Router NAT

**Answer:** AD

#### Explanation:

Reference: <https://www.dummies.com/programming/networking/cisco/types-of-network-address-translation/>

#### NEW QUESTION 212

- (Exam Topic 1)

Which way should be used to safely the API keys?

- A. In an environment variable unique to the system database
- B. Encrypted in a configuration file that is separate from the code
- C. Encrypted in the code in a function
- D. Plain text in the code as a constant

**Answer:** B

#### NEW QUESTION 216

- (Exam Topic 1)

Which two elements are foundational principles of DevOps? (Choose two.)

- A. designing applications as microservices
- B. encouraging containers for the deployment of applications
- C. organizing cross-functional teams over organizational silos
- D. optimizing the cost of infrastructures
- E. automating over documenting

**Answer:** CE

#### NEW QUESTION 218

- (Exam Topic 1)

When a Cisco IOS XE networking device is configured using RESTCONF, what is the default data-encoding method?

- A. XML
- B. x-form-encoding
- C. YANG
- D. YAML

**Answer:** A

#### NEW QUESTION 219

- (Exam Topic 1)

Which task is performed because the test-driven development approach is being used?

- A. testing existing software before developing new code
- B. refactoring code that is covered by existing tests
- C. writing code without committing any coding violations
- D. creating test scenarios based on continuous development

**Answer:** B

#### Explanation:

"The idea is that you build a test case first, before any software has been created or modified" but "testing existing software before developing new code" is the idea or goal, not the task five steps of TDD:

- Write a test
- Test fails
- Write some code
- Test passes
- Refactor

#### NEW QUESTION 223

- (Exam Topic 1)

Drag and drop the function on the left onto the type of plane that handles the function on the right.

|                                                               |                                                    |
|---------------------------------------------------------------|----------------------------------------------------|
| handles transit traffic                                       | <b>Control Plane</b><br><div></div> <div></div>    |
| handles signaling protocols destined to the device            |                                                    |
| handles hardware forwarding decisions                         | <b>Management Plane</b><br><div></div> <div></div> |
| handles configuration change protocols destined to the device |                                                    |
| handles BGP destined to the device                            | <b>Data Plane</b><br><div></div> <div></div>       |
| handles NETCONF destined to the device                        |                                                    |

- A. Mastered  
B. Not Mastered

**Answer:** A

**Explanation:**

|                                                               |                                                                                                                                    |
|---------------------------------------------------------------|------------------------------------------------------------------------------------------------------------------------------------|
| handles transit traffic                                       | <b>Control Plane</b><br>handles signaling protocols destined to the device<br>handles BGP destined to the device                   |
| handles signaling protocols destined to the device            |                                                                                                                                    |
| handles hardware forwarding decisions                         | <b>Management Plane</b><br>handles configuration change protocols destined to the device<br>handles NETCONF destined to the device |
| handles configuration change protocols destined to the device |                                                                                                                                    |
| handles BGP destined to the device                            | <b>Data Plane</b><br>handles transit traffic<br>handles hardware forwarding decisions                                              |
| handles NETCONF destined to the device                        |                                                                                                                                    |

#### NEW QUESTION 228

- (Exam Topic 1)

Which type of threat occur when an attacker can send hostile data to an interpreter within an application?

- A. Cross-site scripting  
B. Sensitive data exposure  
C. Broken authentication  
D. Injection

**Answer:** D

**Explanation:**

Reference: [https://owasp.org/www-project-top-ten/OWASP\\_Top\\_Ten\\_2017/Top\\_10-2017\\_A1-Injection](https://owasp.org/www-project-top-ten/OWASP_Top_Ten_2017/Top_10-2017_A1-Injection)

#### NEW QUESTION 229

- (Exam Topic 1)

What is the purpose of a firewall in application deployment?

- A. adds TLS support to an application that does not support it natively  
B. forwards traffic to a pool of instances of the application  
C. provides translation for an application's hostname to its IP address  
D. limits traffic to only ports required by the application

Answer: D

### NEW QUESTION 233

- (Exam Topic 1)

Drag and drop the Python code from the left onto the correct step on the right to call a REST API.

|                                                                                                                                                                                                                                                |                                                                   |
|------------------------------------------------------------------------------------------------------------------------------------------------------------------------------------------------------------------------------------------------|-------------------------------------------------------------------|
| <pre>response = requests.post(url, data=json.dumps(payload), \ headers=header, verify=False)</pre>                                                                                                                                             | Step 1 – Import the correct libraries.                            |
| <pre>ticket = r_json["Token"] print (ticket)</pre>                                                                                                                                                                                             | Step 2 – Declare the necessary variable.                          |
| <pre>(_json = response.json() print(r_json)</pre>                                                                                                                                                                                              | Step 3 – Send the HTTP Request.                                   |
| <pre>import requests import json</pre>                                                                                                                                                                                                         | Step 4 – Format and display the response in JSON readable format. |
| <pre>controller = 'devnetapi.cisco.com/sandbox/dnacenter' url = 'https://' + controller + '/dna/system/api/v1/auth/token' payload = { 'username': 'devnetuser', 'password': 'pa55word' } header = { 'Content-type': 'application/json' }</pre> | Step 5 – Parse the response to display the Service Ticket.        |

- A. Mastered
- B. Not Mastered

Answer: A

### Explanation:

|                                                                                                                                                                                                                                                |                                                                                                                                                                                                                                                |
|------------------------------------------------------------------------------------------------------------------------------------------------------------------------------------------------------------------------------------------------|------------------------------------------------------------------------------------------------------------------------------------------------------------------------------------------------------------------------------------------------|
| <pre>response = requests.post(url, data=json.dumps(payload), \ headers=header, verify=False)</pre>                                                                                                                                             | <pre>import requests import json</pre>                                                                                                                                                                                                         |
| <pre>ticket = r_json["Token"] print (ticket)</pre>                                                                                                                                                                                             | <pre>controller = 'devnetapi.cisco.com/sandbox/dnacenter' url = 'https://' + controller + '/dna/system/api/v1/auth/token' payload = { 'username': 'devnetuser', 'password': 'pa55word' } header = { 'Content-type': 'application/json' }</pre> |
| <pre>(_json = response.json() print(r_json)</pre>                                                                                                                                                                                              | <pre>response = requests.post(url, data=json.dumps(payload), \ headers=header, verify=False)</pre>                                                                                                                                             |
| <pre>import requests import json</pre>                                                                                                                                                                                                         | <pre>(_json = response.json() print(r_json)</pre>                                                                                                                                                                                              |
| <pre>controller = 'devnetapi.cisco.com/sandbox/dnacenter' url = 'https://' + controller + '/dna/system/api/v1/auth/token' payload = { 'username': 'devnetuser', 'password': 'pa55word' } header = { 'Content-type': 'application/json' }</pre> | <pre>ticket = r_json["Token"] print (ticket)</pre>                                                                                                                                                                                             |

### NEW QUESTION 236

- (Exam Topic 1)

Refer to the exhibit.



```
#!/bin/bash
<item 1>='date +%b-%d-%y'

<item 2>=/home/usr/path/backup-$BACKUPTIME.tar.gz

<item 3>=/home/usr/path/data_folder

tar -cpzf $DESTINATION $SOURCEFOLDER
```

Drag and drop the variables from the left onto the item numbers on the right that match the missing assignments in the exhibit.

|              |          |
|--------------|----------|
| BACKUPTIME   | <item 1> |
| SOURCEFOLDER | <item 2> |
| DESTINATION  | <item 3> |

- A. Mastered
- B. Not Mastered

Answer: A

Explanation:

1 – A, 2 – C, 3 – B

Reference: <https://medium.com/@fotios.floros/linux-backup-script-1722cc9c2bf6> (use tar in order to create your backup file)

NEW QUESTION 240

- (Exam Topic 1)

What is the Git command to delete a local branch named “experiment” without a warning?

- A. git branch –n experiment
- B. git branch –rm experiment
- C. git branch –f experiment
- D. git branch –D experiment

Answer: D

Explanation:

Reference: <https://www.atlassian.com/git/tutorials/using-branches>

NEW QUESTION 244

- (Exam Topic 1)

Fill in the blanks to complete the statement.

Cisco DNA provide the capability to send an HTTP \_\_\_\_\_ request to the API endpoint [https://DNA-c\\_API\\_ADDRESS/api/vi/network-device/](https://DNA-c_API_ADDRESS/api/vi/network-device/) and receive the network \_\_\_\_\_ list in \_\_\_\_\_ format.

- A. Mastered
- B. Not Mastered

Answer: A

Explanation:

Solution below as



NEW QUESTION 247

- (Exam Topic 1)

On which network plane is routing protocol traffic handled?

- A. data plane
- B. management plane
- C. authentication plane
- D. control plane



Answer: D

Explanation:

Reference: [https://tools.cisco.com/security/center/resources/understanding\\_cpapr](https://tools.cisco.com/security/center/resources/understanding_cpapr)

#### NEW QUESTION 249

- (Exam Topic 1)

Refer to the exhibit.

```
<books>
  <science>
    <biology>10.00</biology>
    <geology>9.00</geology>
    <chemistry>8.00</chemistry>
  </science>
  <math>
    <calculus>20.00</calculus>
    <algebra>12.00</algebra>
  </math>
</books>
```

Which JSON is equivalent to the XML –encoded data?

A. [ {

```
  "books": {
    "science": {
      "biology": "10.00",
      "geology": "9.00",
      "chemistry": "8.00"
    },
    "math": {
      "calculus": "20.00",
      "algebra": "12.00"
    }
  }
} ]
```

B. {

```
  "books": [
    "science": {
      "biology": "10.00",
      "geology": "9.00",
      "chemistry": "8.00"
    },
    "math": {
      "calculus": "20.00",
      "algebra": "12.00"
    }
  ]
}
```

C. {

```
  "books": [
    "science": {
      "biology": "10.00",
      "geology": "9.00",
      "chemistry": "8.00"
    },
    "math": {
      "calculus": "20.00",
      "algebra": "12.00"
    }
  ]
}
```

```
D. {
  "books": [
    "science", {
      "biology": "10.00",
      "geology": "9.00",
      "chemistry": "8.00"
    },
    "math", {
      "calculus": "20.00",
      "algebra": "12.00"
    }
  ]
}
```

- A. Option A
- B. Option B
- C. Option C
- D. Option D

Answer: A

**NEW QUESTION 251**

- (Exam Topic 1)

Drag and Drop the Bash commands from the left onto the correct actions on the right.

cd~	list files in directory sorted by edited date descending
cd/	create directory
ls -l	copy file
ls -t	change directory to user \$HOME
cp	create environment variable
cp -r	change directory to file system root
mv	move file
touch	create file
mkdir	copy directory
export	list files in directory with details

- A. Mastered
- B. Not Mastered

Answer: A

**Explanation:**

1 - d, 2 - i, 3 - e, 4 - a, 5 - j, 6 - b, 7 - g, 8 - h, 9 - c, 10 - f

**NEW QUESTION 253**

- (Exam Topic 1)

Drag and drop the Docker file instructions from the onto correct descriptions on the right. Not all options are used.

FROM ubuntu:12.04	informs Docker that the container listens on the specified network port(s) at runtime
VOLUME["/var/www","/var/log/apache2","/etc/apache2"]	creates a mount point with the specified name
RUN apt-get update && apt-get install -y --force-yes apache2	configures a container that runs as an executable
ENTRYPOINT["/usr/sbin/apache2ctl","-D","FOREGROUND"]	must be the first instruction in the Docker file
EXPOSE 1521	

- A. Mastered
- B. Not Mastered

Answer: A

Explanation:

1 – E, 2 – B, 3 – D, 4 – A

NEW QUESTION 255

- (Exam Topic 1)

Fill in the blanks to complete the cURL command that invokes a RESTful API to retrieve a resource in JSON format using OAuth.

```
curl -X [ ] -H "[ ]: application/json" \
-H "[ ]: Bearer AbCdEf123456" https://localhost/api/myresource
```

- A. Mastered
- B. Not Mastered

Answer: A

Explanation:

```
curl -X GET [ ] -H "[ ]: application/json" \
-H "[ ]: Bearer AbCdEf123456" https://localhost/api/myresource
```

Reference: <https://webcache.googleusercontent.com/search?q=cache:Se6d2trvMsEJ:https://blogs.cisco.com/developer/secu>

NEW QUESTION 259

- (Exam Topic 1)

Refer to the exhibit.

```
{
  "items": [
    {
      "kind": "object#NetworkObj",
      "selfLink": "https://10.201.230.5/api/objects/networkobjects/db01",
      "name": "db01",
      "host": {
        "kind": "IPv4address",
        "value": "172.16.0.11"
      },
      "objectId": "db01"
    }
  ]
}
```

The JSON data in the exhibit has been parsed and stored in a variable, “data”. What returns the value “172.16.0.11” ?

- A. data['items'][0]['host']['value']
- B. data['items']['1']['host']['value']
- C. data['items']['host'][1]
- D. data['items']['host']['value']

Answer: A

NEW QUESTION 263

- (Exam Topic 1)

Refer to the exhibit.



A -

bash-3.2\$ curl -H "Content-Type: application/json" -H "Authorization: Bearer Fj2zzykEa09lic9GK2j8LtE1HklH6oRHPQdw1Pat60i7ndtHHnWzL2b5PQmG14Kk\_B9ei5ISAClY7-NarA-2n9H-tGgt-SxQ39iDejgcs" -i -d "{ \"roomId\": \"Y2geK53sjELknosrC7SwQ5ZGL99pHgiuScB7DfNvU8Xx4wDKLiPORcEkryAnM3QmK9LQZsPOG4\", \"text\": \"test2\" }" -X POST https://api.ciscopark.com/v1/messages

B -

C -

D -

HTTP/1.1 200 OK  
Via: 1.1 linker  
Transfer-Encoding: chunked  
TrackingID: ROUTER\_5E0FE283-63EB-01BB-00ED-806BF1BD00ED

E -

Date: Sat, 01 Jan 2020 00:55:31 GMT  
Server: Redacted  
Content-Type: application/json; charset=UTF-8  
Vary: Accept-Encoding  
Strict-Transport-Security: max-age=63072000; includedSybDomains; preload

F -

{\"id\": \"YCPJf3aVovyBYcbn7lSdesNkKcgN5tlExdc6dcnPtl4Va05NfCh9MG17j0tWXQLoIPuoJ73uu7JdoXq9\", \"roomId\": \"Y2geK53sjELknosrC7SwQ5ZGL99pHgiuScB7DfNvU8Xx4wDKLiPORcEkryAnM3QmK9LQZsPOG4\", \"roomType\": \"group\", \"text\": \"test2\", \"personId\": \"YcgYzL6Xgtyfw81XXwqfKf7whfj23KuqWt4kLWkbb3JwEJBlVMZOkIvyDdFoppb0einNj111FcMyy5wD\", \"personEmail\": \"user@webex.com\", \"created\": \"2020-01-01T00:55:32.492Z\"}

Drag and drop the descriptors from the left onto the correct parts of the API request and response on the right.

Response Headers	A
HTTP Request	B
HTTP Response	C
Request Payload	D
Request Headers	E
Response Payload	F

- A. Mastered
- B. Not Mastered

Answer: A

Explanation:

A – E, B – D, C – B, D – C, E – A, F – F

#### NEW QUESTION 264

- (Exam Topic 1)

Fill in the blanks to complete the python script to request a service ticket using the APIC-EM rest API for the user "devnetuser".

```

import requests
import json
controller = 'devnetapi.cisco.com/sandbox/apic_em'
url = "https://" + controller + "/api/va/ticket"
payload = { 'username': 'devnetuser', 'password': '371274738' }
header = { 'Content-type': 'application/json' }
response = requests.post(url, data=json.dumps(payload), \
headers=header, verify=False)
r_json = response.json()
print(r_json)
ticket = r_json["response"]["serviceTicket"]
print(ticket)

```



- A. Mastered
- B. Not Mastered

**Answer:** A

**Explanation:**

```
import requests
import json
controller = 'devnetapi.cisco.com/sandbox/apic_em'
url = "https://" + controller + "/api/va/ticket"
payload = { 'username': 'devnetuser', 'password': '371387657' }
header = { 'Content-type': 'application/json' }
response = requests.post(url, data=json.dumps(payload), \
headers=header, verify=False)
r_json = response.json()
print(r_json)
ticket = r_json["response"]["serviceTicket"]
print(ticket)
```

Reference: <https://developer.cisco.com/docs/apic-em/#!hello-world>

#### NEW QUESTION 265

- (Exam Topic 1)

A 401 HTTP response code is returned when calling a REST API. What is the error state identified by this response code?

- A. The server cannot process the request as it has detected an issue in the request syntax or body.
- B. The server accepted the request but the client is not authorized for this content.
- C. The request has not been accepted because it requires authentication.
- D. The server cannot find the requested resource because the path specified is incorrect.

**Answer:** C

**Explanation:**

Reference:

<https://blog.restcase.com/rest-api-error-codes-101/#:~:text=A%20401%20error%20response%20indicates,crede>

#### NEW QUESTION 267

- (Exam Topic 1)

A developer is reviewing a code that was written by a colleague. It runs fine, but there are many lines of code to do a seemingly simple task repeatedly. Which action organizes the code?

- A. Refactor the code by removing any unnecessary tests
- B. Using functions, rewrite any pieces of code that are repeated
- C. Reverse engineer and rewrite the code logic
- D. Modify the code to use loops

**Answer:** B

#### NEW QUESTION 270

- (Exam Topic 1)

Which is an advantage of using network programmability?

- A. It removes CLI access for devices.
- B. It provides for more scalable and replicable network provisioning.
- C. Manual configuration is faster.
- D. No cloud abstraction occurs.

**Answer:** B

#### NEW QUESTION 272

- (Exam Topic 1)

Package updates from a local server fail to download. However, the same updates work when a much slower external repository is used. Why are local updates failing?

- A. The update utility is trying to use a proxy to access the internal resource.
- B. The Internet connection is too slow.
- C. The Internet is down at the moment, which causes the local server to not be able to respond.
- D. The server is running out of disk space.

**Answer:** A

#### NEW QUESTION 273

- (Exam Topic 1)

Refer to the exhibit.

```
def get_result()

    url = "https://sandboxdnac.cisco.com/dna/system/api/v1/auth/token"

    resp = requests.post(url, auth=HTTPBasicAuth(DNAC_USER, DNAC_PASSWORD))

    result = resp.json()['Token']

    return result
```

What does the python function do?

- A. It returns DNAC user and password.
- B. It returns HTTP Basic Authentication.
- C. It returns an authorization token.
- D. It reads a token from a local JSON file and posts the token to the DNAC URL.

**Answer:** C

#### NEW QUESTION 275

- (Exam Topic 1)

Refer to the exhibit.

```
json_string = """
{
    "researcher": {
        "name": "Ford Perfect",
        "species": "Betelgeusian",
        "relatives": [
            {
                "name": "Zaphod Beeblebrox",
                "species": "Betelgeusian"
            }
        ]
    }
}
"""

my_json = json.loads(json_string)
```

Which python data structure does my\_json contain?

- A. List
- B. Json
- C. Map
- D. Dict

**Answer:** D

#### Explanation:

Reference:

<https://stackoverflow.com/questions/34764979/loading-python-string-with-u-as-json?noredirect=1&lq=1>

#### NEW QUESTION 277

- (Exam Topic 1)

Which line is an example of the start of a chunk from a unified diff?

- A. @@ -90,88 +20191008T1349@@
- B. @@ -20191007T1200 +88,90 @@
- C. @@ -20191007T1200 +20191008T1349@@
- D. @@ -88,10 +88,6 @@

**Answer:** D

#### Explanation:

Reference:

<https://unix.stackexchange.com/questions/252927/what-do-the-numbers-in-the-line-mean-in-output-of-diff>

#### NEW QUESTION 282

- (Exam Topic 1)

Users cannot access a webserver and after the traffic is captured, the capture tool shows an ICMP packet that reports "time exceeded in-transit". What is the cause of this webserver access issue?

- A. A router along the path is misrouting the packets in a wrong direction.
- B. A router along the path has the wrong time.
- C. The server is too far away and the packets require too much time to reach it
- D. The server is too loaded and the connection could not be handled in time

**Answer:** A

#### NEW QUESTION 284

- (Exam Topic 1)

Refer to the exhibit.

```
---
- hosts: switch2960cx
  gather_facts: no

  tasks:
    - ios_l2_interface:
      name: GigabitEthernet0/1
      state: unconfigured

    - ios_l2_interface:
      name: GigabitEthernet0/1
      mode: trunk
      native_vlan: 1
      trunk_allowed_vlans: 6-8
      state: present

    - ios_vlan:
      vlan_id: 6
      name: guest-vlan
      interfaces:
        - GigabitEthernet0/2
        - GigabitEthernet0/3

    - ios_vlan:
      vlan_id: 7
      name: corporate-vlan
      interfaces:
        - GigabitEthernet0/4

    - ios_vlan:
      vlan_id: 8
      name: iot-vlan
      interfaces:
        - GigabitEthernet0/5
```

Which two statements describe the configuration of the Ansible script if run? (Choose two.)

- A. Traffic on port 0/2 and 0/3 is connected to port 0/6.
- B. Traffic from ports 0/2 to 0/5 can flow on port 0/1 due to the trunk.
- C. Traffic can flow between ports 0/2 to 0/5 due to the trunk on port 0/1.
- D. GigabitEthernet0/2 and GigabitEthernet0/3 are access ports for VLAN 6.
- E. GigabitEthernet0/1 is left unconfigured.

**Answer:** BD

#### NEW QUESTION 289

- (Exam Topic 3)

What is a characteristic of Waterfall compared to Agile software development method?

- A. Waterfall focuses on continuous improvement, and Agile focuses on the design phase.
- B. Waterfall separates the project development lifecycle into sprints, and Agile does not use cycles.
- C. Waterfall specifies requirements before development begins, and Agile responds flexibly to changes in requirements.
- D. Waterfall uses reviews with a step-by-step approach, and Agile uses a serially phased approach.

**Answer:** C

NEW QUESTION 292

- (Exam Topic 3)

A developer is running an application that connects to the Cisco website and collects data. The application will be hosted in a local data center and the data will need to be collected on a frequent basis. The application client requires certain environmental variables to be set before the run. Which Bash command sets the environmental variables for a Linux system?

- A. `"cisco.com"=WEBSITE`
- B. `export lvar=23`
- C. `WEBSITE="cisco.com"`
- D. `export website="cisco.com"`

Answer: D

NEW QUESTION 296

- (Exam Topic 3)

Refer to the exhibit.

```
1 import requests
2
3 url = "https://api.meraki.com/api/v0/organizations/{{organizationId}}/insight/
* monitoredMediaServers"
4
5 payload = {
6     "name": "Sample VoIP Provider",
7     "address": "123.123.123.1"
8 }
9 headers = {
10     'Accept': '*/*',
11     'Content-Type': 'application/json'
12 }
13
14 response = requests.request("POST", url, headers=headers, data=payload)
15
16 print(response.text.encode('utf8'))
```

Which workflow does the script automate?

- A. retrieves a media server that is being monitored
- B. updates a media server that is being monitored
- C. adds a media server to be monitored
- D. deletes a media server that is being monitored

Answer: C

NEW QUESTION 299

- (Exam Topic 3)

Drag and drop the capabilities from the left onto the Cisco Network Management Platforms that support the capabilities on the right.

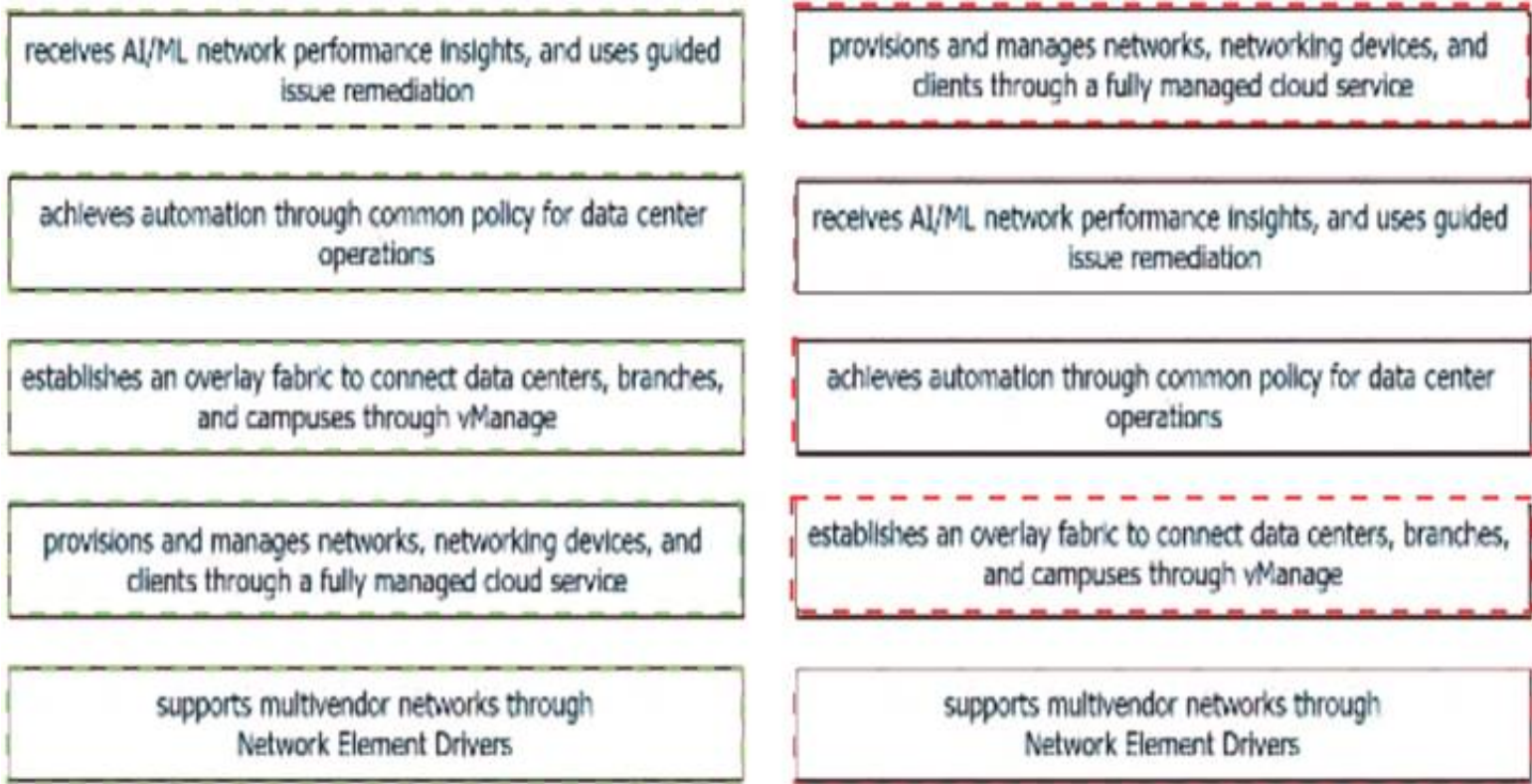
receives AI/ML network performance insights, and uses guided issue remediation	Meraki
achieves automation through common policy for data center operations	Cisco DNA Center
establishes an overlay fabric to connect data centers, branches, and campuses through vManage	ACI
provisions and manages networks, networking devices, and clients through a fully managed cloud service	Cisco SD-WAN
supports multivendor networks through Network Element Drivers	NSO

- A. Mastered
- B. Not Mastered

Answer: A

Explanation:





**NEW QUESTION 300**

- (Exam Topic 3)

A team of developers is responsible for a network orchestration application in the company. The responsibilities also include: developing and improving the application in a continuous manner deployment of the application and management of CI/CD frameworks monitoring the usage and problems and managing the performance improvements Which principle best describes this DevOps practice?

- A. responsible for IT operations
- B. automation of processes
- C. end-to-end responsibility
- D. quality assurance checks

Answer: C

**NEW QUESTION 303**

- (Exam Topic 3)

Drag and drop the API characteristics from the left onto the categories on the right.

The API is seen as a function call.

There is communication between server and client.

It follows a resource-oriented model.

The API can be stateless.

REST

RPC

- A. Mastered
- B. Not Mastered

Answer: A

**Explanation:**

Graphical user interface, application Description automatically generated

**NEW QUESTION 304**

- (Exam Topic 3)

What is the function of an Ethernet switch in a networking environment?

- A. to switch a frame from one port to another port based on IP address
- B. to switch a frame from one port to another port based on MAC address
- C. to provide IP addressing to connected hosts
- D. to block unwanted traffic

Answer: B

**NEW QUESTION 308**

- (Exam Topic 3)

What is a procedural component of CI/CD pipelines?

- A. Bundled artifacts must be generated.
- B. Every test must pass for the pipeline to continue its execution.
- C. Some tests fail without stopping the pipeline execution.
- D. The release label that identifies the build is optional.

**Answer:** B

**Explanation:**

In a CI/CD (Continuous Integration/Continuous Deployment) pipeline, a procedural component is a specific step or action that is carried out in a specific order as part of the pipeline process. One of the procedural components of a CI/CD pipeline is that every test must pass in order for the pipeline to continue its execution. If any test fails, the pipeline will stop and the issue must be addressed before the pipeline can continue. This is an important procedural component of a CI/CD pipeline because it ensures that the code being deployed is of high quality and meets the necessary standards before it is released.

**NEW QUESTION 309**

- (Exam Topic 3)

```
---
param0: Workflow1
param1:
  list:
    - name: VLAN_ID
      value: '198'
param2: 0
```

Refer to the exhibit. The YAML shown contains an object "param0" that is equal to "Workflow1", a second object "param1" that contains an object called "list" which contains an array of two objects, "name" (equal to "VLAN\_ID") and "value" (equal to a text value "198"), and finally a third object "param2" that is equal to "0". What is the equivalent message in JSON data format?

- A. 

```
[
  "param0"="Workflow1";
  "param1"=
    "list"=
      [ "name"="VLAN_ID";
        "value"="198" ]
  "param2"=0
]
```
- B. 

```
{
  "param0": "Workflow1";
  "param1": {
    "list":
      [
        { "name": "VLAN_ID";
          "value": "198" }
      ]
  },
  "param2": 0
}
```
- C. 

```
[
  "param0": "Workflow1",
  "param1": {
    "list":
      (
        [ "name": "VLAN_ID",
          "value": "198" ]
      )
  },
  "param2": 0
]
```
- D.

```
{
  "param0": "Workflow1",
  "param1": {
    "list":
      [
        { "name": "VLAN_ID",
          "value": "198" }
      ]
  },
  "param2": 0
}
```

**Answer:** D

#### NEW QUESTION 310

- (Exam Topic 3)

A developer creates a program in which an object maintains a list of classes based on the observer pattern. The classes are dependent on the object. Whenever the state of the object changes, it notifies the dependent classes directly through callbacks. Which advantage of the observer pattern offers minimum dependencies and maximum flexibility between dependent objects or classes?

- A. tight coupling
- B. cohesion
- C. mediation
- D. loose coupling

**Answer:** D

#### NEW QUESTION 314

- (Exam Topic 3)

##### SDK Documentation:

##### OrganizationController:

```
get_organizations()
get_network_device(dict)
```

##### DevicesController:

```
get_network_devices(id)
```

##### NetworksController:

```
get_organization_networks(dict)
```

Refer to the exhibit. A script must output details of all the Cisco Meraki MS220-BP switches across all organizations and networks. Drag and drop the code snippets from the bottom onto the boxes in the code to complete the script. Not all options are used.



```
from meraki_sdk.meraki_sdk_client import MerakiSdkClient
from meraki_sdk.exceptions.api_exception import APIException

api_key = "API_KEY"
client = MerakiSdkClient(api_key)

for org in [ ]:
    try:
        options = {"organization id": org["id"]}
        networks = [ ]
        for network in networks:
            devices = [ ]
            for device in devices:
                if device["model"] == "MS220-8P":
                    options = {"network id": network["id"], "serial": device["serial"]}
                    output = [ ]
                    print(output)
            except APIException as e:
                pass
```

client.organizations.get\_organizations() :

client.networks.get\_organization\_networks(api\_key)

client.networks.get\_organization\_networks(options)

client.devices.get\_network\_devices(network ["id"])

client.devices.get\_network\_device(options=options)

client\_devices.get\_network\_device(device ["model"])

- A. Mastered  
 B. Not Mastered

**Answer: A**

**Explanation:**

```
from meraki_sdk.meraki_sdk_client import MerakiSdkClient
from meraki_sdk.exceptions.api_exception import APIException

api_key = "API_KEY"
client = MerakiSdkClient(api_key)

for org in [ ]:
    try:
        options = {"organization id": org["id"]}
        networks = [ ]
        for network in networks:
            devices = [ ]
            for device in devices:
                if device["model"] == "MS220-8P":
                    options = {"network id": network["id"], "serial": device["serial"]}
                    output = [ ]
                    print(output)
            except APIException as e:
                pass
```

client.organizations.get\_organizations() :

client.networks.get\_organization\_networks(api\_key)

client.networks.get\_organization\_networks(options)

client.devices.get\_network\_devices(network ["id"])

client.devices.get\_network\_device(options=options)

client\_devices.get\_network\_device(device ["model"])

**NEW QUESTION 318**  
 - (Exam Topic 3)



```
1 - hosts: nxos_rtr
2   gather_facts: false
3   tasks:
4     - nxos_hsrp:
5       group: "{{ item.group }}"
6       vip: "{{ item.vip }}"
7       priority: 115
8       interface: "{{ item.interface }}"
9       preempt: enabled
10      auth_type: md5
11      auth_string: "s3cuR3"
12      version: 2
13      host: "{{ hostvars['rtr-1a']['ansible_ssh_host'] }}"
14      with_items:
15        - "{{ hsrp_groups }}"
16      delegate_to: "{{ hostvars['srv-1a']['ansible_ssh_host'] }}"
```

Refer to the exhibit. An engineer runs a network that consists of Cisco Nexus devices. The network is distributed between data centers in different locations. The switches are configured using standalone connections and a single point of failure. Which process is being automated by the Ansible playbook?

- A. enabling HSRP on the nxos\_rtr inventory host
- B. enabling HSRP on the rtr-1a inventory host
- C. executing HSRP configuration from the Ansible controller node
- D. executing HSRP configuration from the srv-1a inventory host

Answer: B

NEW QUESTION 320

- (Exam Topic 3)

Drag and drop the code snippets from the bottom onto the blanks in the code to complete the happy path scenario. Not all options are used.

```
import member as m
import pytest
class Team:
    def __init__(self, name):
        self.name = name
        self.members = []
    def add_member(self, member):
        if member:
            if member not in self.members:
                [ ]
                return True
            else:
                [ ]
        else:
            [ ]

@pytest.fixture
def team():
    team = Team('Reds')
    yield team
    del team

@pytest.fixture
def member():
    member = m.Member('Chris George')
    yield member
    del member

@pytest.mark.usefixtures('team', 'member')
class TestHappyPathAddMemberToTeam:
    def test_add_member_to_team(self, team, member):
        assert [ ] is True
```

return True

team.add\_member(member)

self.members.append(member)

yield member

return False

member.add\_member()

- A. Mastered
- B. Not Mastered

Answer: A

Explanation:

```
import member as m
import pytest
class Team:
    def __init__(self, name):
        self.name = name
        self.members = []
    def add_member(self, member):
        if member:
            if member not in self.members:
                member.add_member()
                return True
            else:
                return False
        else:
            team.add_member(member)

@pytest.fixture
def team():
    team = Team('Reds')
    yield team
    del team
@pytest.fixture
def member():
    member = m.Member('Chris George')
    yield member
    del member
@pytest.mark.usefixtures('team', 'member')
class TestHappyPathAddMemberToTeam:
    def test_add_member_to_team(self, team, member):
        assert yield member is True
```

return True

team.add\_member(member)

self.members.append(member)

yield member

return False

member.add\_member()

### NEW QUESTION 323

- (Exam Topic 3)

```
1 URL: https://example.com/restconf/data/Cisco-IOS-XE-native:native/logging/monitor
2 Method: POST
3
4 Headers: {'Content-type': 'application/yang-data+json', 'Accept': 'application/yang-data+json,
* application/yang-data.errors+json'}
5
6 Body:
7
8 {
9     "severity": "alerts"
10 }
```

Refer to the exhibit. Which HTTP code is returned after the RESTCONF query is executed?

- A. 201
- B. 204
- C. 302
- D. 304

**Answer: A**

### NEW QUESTION 326

- (Exam Topic 3)

A developer attempts to refactor and improve the application code. It is noticed that the code contains several pieces of key information that could be a security threat if this code is accessible by those who are not authorized to this data. Which approach addresses the security concerns noticed by the developer?

- A. Host the application code on a machine located in a secure data center.
- B. Utilize environment variables for username and password details.
- C. Rely on the security teams' goodwill to not give access to those who do not need it.
- D. Move the hardware that the application is deployed on to a secure location.

**Answer: B**

### NEW QUESTION 327

- (Exam Topic 3)

What is a function of the default gateway in a network?

- A. to drop traffic that is destined to the default gateway
- B. to forward traffic to different subnets
- C. to forward traffic to the same subnet
- D. to drop traffic that is not destined to the default gateway

**Answer: B**

### NEW QUESTION 332

- (Exam Topic 3)

A development team is creating an application used for contactless payments. The application must: Be web-based Capture and process the credit card information for a purchase.

Which security action must the web application use to gather and process the private customer data?

- A. Enable RATs to monitor the web application remotely.
- B. Disable botnets to eliminate risks.
- C. Disable TLS to increase the connection speed.
- D. Enable the encryption of network traffic.

**Answer: D**

### NEW QUESTION 337

- (Exam Topic 3)

```
1  import requests
2  def main():
3      def getCreds():
4          user = input('User: ')
5          pwd = Getpass('Pass: ')
6          return (user,pwd)
7
8      def login(ipaddr,user,pwd):
9          url = "https://{ipaddr}/api/aaaLogin.json".format(ipaddr=ipaddr)
10         data = '{"aaaUser":{"attributes":{"name":"%(user)s","pwd":"%(pwd)s"}}}'
11             % ("pwd":pwd,"user":user)
12         response = requests.post(url,data=data,verify=False)
13         cookie = response.headers['Set-Cookie']
14         return cookie
15
16     def getstuff(ipaddr,cookie):
17         headers = {"Cookie":cookie}
18         url = "https://{ipaddr}/api/node/class/fvTenant.json".format(ipaddr=ipaddr)
19         response = requests.get(url,headers=headers,verify=False)
20         grouplist = []
21         for x in response.json()["imdata"]:
22             grouplist.append(x["fvTenant"]["attributes"]["name"])
23         return ','.join(grouplist)
24
25     ipaddr = "192.168.255.2"
26     user,pwd = getCreds()
27     token = login(ipaddr,user,pwd)
28     return getstuff(ipaddr,cookie)
29
30 if __name__ == '__main__':
31     result = main()
32     print(result)
```

Refer to the exhibit. Which action does the script perform?

- A. It queries user credentials from Cisco IOS XE devices.
- B. It retrieves device identification from Cisco DNA Center.
- C. It exports SSID information from Meraki dashboard.
- D. It collects group information from ACI.

**Answer: D**

### NEW QUESTION 341

- (Exam Topic 3)

Refer to the exhibit.



```
url = 'https://api.amp.cisco.com/v1/computers'
response = session.get (url)
response_json = response.json ()

for item in response_json ['data'] :
    print (item['connector_guid'], item['hostname'])

while 'next' in response_json['metadata'] ['links']:
    

    response = session.get (next_url)
    response_json = response.json()
    for item in response_json['data']:
        print(item['connector_guid'], item['hostname'])
```

An engineer sends the request to collect data over Cisco AMP for Endpoints API. The Engineer must list guide and hostname data for all computers, but the first request returns only 500 items out of 2,000. Then, the engineer adds the loop to collect all the data. What must be added to the script where the code is missing to complete the requests?

- A.
- B.
- C.
- D.

- A. Option A
- B. Option B
- C. Option C
- D. Option D

**Answer:** A

**Explanation:**

[https://github.com/CiscoSecurity/amp-03-pagination/blob/master/01\\_paginate.py](https://github.com/CiscoSecurity/amp-03-pagination/blob/master/01_paginate.py) while 'next' in response\_json['metadata']['links']:  
next\_url = response\_json['metadata']['links']['next'] response = session.get(next\_url)  
response\_json = response.json()  
for computer in response\_json['data']: print(computer['connector\_guid'], computer['hostname'])

**NEW QUESTION 346**

- (Exam Topic 3)

What are two benefits of using classes over functions when writing applications? (Choose two.)

- A. improved readability
- B. increased compatibility
- C. variable reusability
- D. increased performance
- E. code organization

**Answer:** AC

**NEW QUESTION 350**

- (Exam Topic 3)

```
api_endpoint = f"https://veryusefulapi/v2/authenticate"

headers = {
    "Authorization": "Basic YWRtaW46c3VwZXJzZWNyZXQ="
    "Accept": "application/json"
}

req = requests.get(api_endpoint, headers=headers)
```

Refer to the exhibit. A developer is part of a team that is working on an open-source project in which source code is hosted in a public GitHub repository. While the application was built, security concerns were addressed by encrypting the credentials on the server. After a few months, the developer realized that a hacker managed to gain access to the account. The exhibit contains part of the source code for the login process. Why was the attacker able to access the developer's account?

- A. The encoded credentials were available in the source code.
- B. The application was not encrypting the communication with the server.
- C. The credentials were encrypted in the source code.
- D. An SSL certificate was used instead of the TLS protocol to authenticate.

Answer: A

#### NEW QUESTION 354

- (Exam Topic 3)

What is a benefit of a distributed version control system?

- A. encourages users to commit small pieces of work to the system more frequently
- B. ensures that all code meets minimum standards before being committed to the system
- C. allows users to work on the codebase even when not connected to the Internet
- D. ensures that all code is tested before being committed to the system

Answer: C

#### Explanation:

Reference: <https://about.gitlab.com/topics/version-control/benefits-distributed-version-control-system/>

#### NEW QUESTION 357

- (Exam Topic 2)

Which Cisco product provides malware and content filtering through DNS?

- A. Cisco ASA Firepower module
- B. Cisco AMP
- C. Cisco ISE
- D. Cisco Umbrella

Answer: D

#### NEW QUESTION 358

- (Exam Topic 2)

Refer to the exhibit.

```
import requests, sys
from config import user, password

url = "http://restconf.devnet.com:9443/api/running/interfaces"
headers = 
response = requests.put(url, auth=(user, password), headers=headers,
verify=False)
print(response.text)
```

A network engineer wants to use an API to update information about device interfaces. The network devices are deployed in a Cisco DevNet Sandbox and have running interfaces. Which line of code needs to be placed in the snippet where the code is missing?

- A. {'Content-Type': 'application/yang.data+xml', 'Accept': 'application/yang.data+xml'}
- B. {'Content-Type': 'application/yang.data+yaml', 'Accept': 'application/yang.data+yaml'}
- C. {'Content-Type': 'application/restconf.data+json', 'Accept': 'application/restconf.data+json'}
- D. {'Content-Type': 'application/yang.data+utf8', 'Accept': 'application/restconf.data+utf8'}

Answer: C

#### NEW QUESTION 359

- (Exam Topic 2)

Refer to the exhibit.

#### API Documentation:

Integrations are how you request permission to invoke the Webex REST API on behalf of another Webex Teams user. To do this in a secure way the API supports the OAuth 2 standard which allows third-party integrations to get a temporary access token for authenticating API calls instead of asking users for their password.

#### Script:

```
01 import requests
02
03 base_url = "https://webexapis.com/v1"
04 header = {"Key": "Value"}
05
06 url = "{}/{}/".format(base_url, "/teams")
07 print(requests.get(url, headers=header).status_code)
```

A developer creates a Python script that queries Cisco Webex. When the script is executed, a 401 code is returned. After troubleshooting, the developer discovers that the service is missing privileges. Which change to the header in line 4 of the script results in the code 200?

A)

```
header = {"Authentication": "Bearer YOUR_TOKEN"}
```

B)

```
header = {"Authentication Bearer" : "YOUR_TOKEN"}
```

C)

```
header = {"Authorization" : "Bearer YOUR_TOKEN"}
```

D)

```
header = {"Authorization Bearer" : "YOUR_TOKEN"}
```

- A. Option A
- B. Option B
- C. Option C
- D. Option D

**Answer: C**

#### NEW QUESTION 360

- (Exam Topic 2)

Drag and drop the code snippets from the bottom to the blanks in the code to test the API response through the Python unittest library. Not all options are used.

```
import unittest
import json
from apidogs import app

class TestsAPIDogs(unittest.TestCase):

    def setUp(self):
        self.app = app.test_client()

    # Check status response of API
    def test_status(self):
        resp =self.app.get('/dogs/all')
        status_code = response.
        self.assertEqual(status_code, )

    # Check for content type is in application/json
    def test_content_type(self):
        resp =self.app.get('/dogs/all')
        self.assertEqual(resp. , 'application/json')

    def test_item_not_exist(self):
        resp =self.app.get('/dogs?id= ')
        self.assertEqual(response.status code,404)
```

none	content	
status_code	200	content_type
403	status	

- A. Mastered
- B. Not Mastered

**Answer: A**

#### Explanation:

Graphical user interface, text Description automatically generated

#### NEW QUESTION 362

- (Exam Topic 2)

What is a capability of an agentless configuration management system?

- A. It requires managed hosts to have an interpreter for a high-level language such as Python or Ruby.
- B. It requires managed hosts to connect to a centralized host to receive updated configurations.
- C. It uses compiled languages as the basis of the domain-specific language to interface with managed hosts.
- D. It uses existing protocols to interface with the managed host.

**Answer: D**

#### NEW QUESTION 365

- (Exam Topic 3)

Which IP service is used to monitor the performance of network devices?

- A. SNMP
- B. DHCP
- C. DNS
- D. NTP

**Answer: A**



#### NEW QUESTION 368

- (Exam Topic 3)

What is a comparison of YAML and JSON?

- A. YAML has a more consistent approach to representing data compared to JSON.
- B. JSON does not support comments and YAML does.
- C. YAML is a more verbose data structure compared to JSON.
- D. JSON has more common usage in configuration management tools compared to YAML.

**Answer:** B

#### Explanation:

Reference: <https://stackoverflow.com/questions/244777/can-comments-be-used-in-json>

Can I use comments in JSON? No, JSON is a data-only format. Comments in the form `//`, `#`, or `/* */`, which are used in popular programming languages, are not allowed in JSON. You can add comments to JSON as custom JSON elements that will hold your comments, but these elements will still be data.

#### NEW QUESTION 370

- (Exam Topic 3)

A developer completed the creation of a script using Git. Before delivering it to the customer, the developer wants to be sure about all untracked files, without losing any information. Which command gathers this information?

- A. `git clean -n`
- B. `git rm -f`
- C. `git clean -r`
- D. `git rm *`

**Answer:** A

#### NEW QUESTION 374

- (Exam Topic 3)

A developer is working on a new feature in a branch named 'newfeat123456789' and the current working primary branch is named 'prim987654321'. The developer requires a merge commit during a fast forward merge for record-keeping purposes. Which Git command must be used?

- A. `git merge --no-ff newfeat123456789`
- B. `git commit --no-ff newfeat123456789`
- C. `git add --commit-ff newfeat123456789`
- D. `git reset --commit-ff newfeat123456789`

**Answer:** A

#### NEW QUESTION 376

- (Exam Topic 3)

What is a benefit of using a code review process in application development?

- A. accelerates the deployment of new features in an existing application
- B. provides version control during code development
- C. enables the quick deployment of new code
- D. eliminates common mistakes during development

**Answer:** D

#### NEW QUESTION 377

- (Exam Topic 3)

Which Python function is used to parse a string that contains JSON data into a Python dictionary?

- A. `json.dumps()`
- B. `json.to_json()`
- C. `json.parse()`
- D. `json.loads()`

**Answer:** D

#### Explanation:

`loads()` function is present in python built-in 'json' module. This function is used to parse the JSON string.

#### NEW QUESTION 379

- (Exam Topic 3)

Which two situations align with infrastructure as code principles? (Choose two.)

- A. nonreplicable snowflake servers
- B. release versions to specific hardware
- C. maximized configuration drift
- D. easily reproducible systems
- E. repeatable processes

**Answer:** BD

#### NEW QUESTION 381

- (Exam Topic 3)

A developer plans to deploy a new application that will use an API to implement automated data collection from Webex with these requirements:

The application was created by using the request library. Requires HTTP basic authentication.

Provides data in JSON or XML formats.

Which Cisco DevNet resource helps the developer with how to use the API?

- A. DevNet sandbox
- B. API documentation
- C. forums
- D. DevNet code exchange

**Answer:** B

#### NEW QUESTION 385

- (Exam Topic 3)

What is a benefit of using model-driven programmability for infrastructure automation?

- A. connected user tracking
- B. infrastructure resource optimization
- C. multiple device control protocols
- D. device performance monitoring

**Answer:** C

#### NEW QUESTION 390

- (Exam Topic 3)

Which two details are captured from the subnet mask? (Choose two.)

- A. portion of an IP address that refers to the subnet
- B. default gateway of the host
- C. unique number ID assigned to the host
- D. part of an IP address that refers to the host
- E. network connection of a host or interface

**Answer:** AD

#### NEW QUESTION 392

- (Exam Topic 3)

An engineer needs to retrieve a list of locally available Firepower Threat Defense upgrade packages by using the Firepower Management Center REST API. The engineer uses a GET request with the URL:

/api/fmc\_platform/v1/updates/upgradepackages/f413afeb-e6f6-75f4-9169-6d9bd49s625e

What does "f413afeb-e6f6-75f4-9169-6d9bd49s625e" represent?

- A. container UUID
- B. package UUID
- C. domain UUID
- D. object UUID

**Answer:** B

#### Explanation:

"GET upgradepackages Request Type: GET

Description: Retrieves a list of locally available Firepower Threat Defense upgrade packages, including major upgrades, maintenances release upgrades, and hotfixes.

URL: /api/fmc\_platform/v1/updates/upgradepackages

URL for GET by ID: /api/fmc\_platform/v1/updates/upgradepackages/{package\_UUID}" Source:

[https://www.cisco.com/c/en/us/td/docs/security/firepower/640/api/REST/Firepower\\_Management\\_Center\\_RES](https://www.cisco.com/c/en/us/td/docs/security/firepower/640/api/REST/Firepower_Management_Center_RES)

#### NEW QUESTION 394

- (Exam Topic 3)

A developer writes an application that refines data in temporary secure file storage hosted on the public cloud. Data will be deleted after processing and does not contain any private information. What is the advantage that a public cloud deployment provides to the developer?

- A. high security with encryption
- B. ease in infrastructure management
- C. flexible development
- D. bespoke services

**Answer:** B

#### NEW QUESTION 399

- (Exam Topic 3)

Which protocol runs over TCP port 830?

- A. NETCONF
- B. Telnet
- C. RESTCONF
- D. HTTP

**Answer:** A

#### NEW QUESTION 400

- (Exam Topic 3)

Which HTTP error code series relates to redirection?

- A. 400
- B. 500
- C. 200
- D. 300

**Answer:** D

#### Explanation:

1xx - Informational: The server has received the request and is continuing the process

2xx - Successful: The request was successful and the browser has received the expected information 3xx (Redirection): You have been redirected and the completion of the request requires further action

4xx (Client Error): The website or the page could not be reached, either the page is unavailable or the request contains bad syntax

5xx (Server Error): While the request appears to be valid, the server could not complete the request

#### NEW QUESTION 405

- (Exam Topic 3)

Why would a developer compare a current version of code to a previous version?

- A. to provide the single source of truth
- B. to troubleshoot code failures
- C. to track who made a change
- D. to aid in collaboration

**Answer:** B

#### NEW QUESTION 407

- (Exam Topic 3)

An engineer prepares a set of Python scripts to interact with network devices. To avoid network performance issues, the engineer wants to run them in a test environment. Which resource must be used to monitor the live execution of code in an always-available environment?

- A. packet tracer
- B. learning labs
- C. sandbox
- D. code exchange

**Answer:** C

#### NEW QUESTION 410

- (Exam Topic 3)

Refer to the exhibit.

```
cd ~/development/project01
mkdir info
cd info
[REDACTED]
cp ./requirements.txt ~/Documents/backup/requirements.txt
```

A developer just finished testing a Python script and wants to save the list of packages and versions installed on the current machine. The developer must make sure that it will not cause any issues if tested on another device due to different library versions. Which line of code needs to be placed on the snippet where the code is missing?

- A. pip freeze 2> requirements.txt
- B. pip freeze > requirements.txt
- C. pip freeze => requirements.txt
- D. pip freeze | requirements.txt

**Answer:** B

#### Explanation:

pip freeze requirements.txt ile ilgili görsel sonucu The most common command is pip freeze > requirements. txt , which records an environment's current package list into requirements. txt. If you want to install the dependencies in a virtual environment, create and activate that environment first, then use the Install from requirements.

#### NEW QUESTION 415



- (Exam Topic 3)

What is the purpose of grouping devices in a VLAN?

- A. Devices communicate as if they are connected on the same wire.
- B. Multicast network traffic is limited to the VLAN connected devices.
- C. Unicast messages are limited to the clients connected on the same VLAN.
- D. Network traffic is load balanced between the devices connected to the VLAN.

**Answer:** B

#### NEW QUESTION 418

- (Exam Topic 3)

**POST** /v1/meetings

**Body Parameters**

**title**  
string Required  
Meeting title. The title can be a maximum of 128 characters long.

**agenda**  
string  
Meeting agenda. The agenda can be a maximum of 2500 characters long.

**password**  
string  
Meeting password. Must conform to the site's password complexity settings. Read [password management](#) for details. If not specified, a random password conforming to the site's password rules will be generated automatically.

**start**  
string Required  
Date and time for the start of meeting in any [ISO 8601](#) compliant format. start cannot be before current date and time or after end. Duration between start and end cannot be shorter than 10 minutes or longer than 24 hours.

**end**  
string Required  
Date and time for the end of meeting in any [ISO 8601](#) compliant format. end cannot be before current date and time or before start. Duration between start and end cannot be shorter than 10 minutes or longer than 24 hours.

Refer to the exhibit. A bespoke meeting booking system must be integrated with Cisco Webex so that meetings are created automatically. Drag and drop the code from the bottom onto the box where the code is missing to create a sample meeting. Not all options are used.

```
import requests, json

[ ] = 'eyJhbGc ... yJbN8'

headers = {
    'Authorization': f'Bearer {token}',
    'Content-Type': 'application/json'
}

payload = {
    "title": "DevNet Webex Discussion",
    "password": "AGrtgl234",
    "start": "2020-11-10T15:00:00Z",
    "end": "2020-11-10T17:00:00Z",
    "enabledAutoRecordMeeting": False,
    "allowAnyUserToBeCoHost": False
}

response = requests.request(" [ ] ", f'{BASE_URL}/ [ ] ',
    headers=headers, data=json.dumps( [ ] ))
print(response.text.encode('utf8'))
```

payload

PUT

token

vl/meeting

vl/meetings

POST

- A. Mastered  
B. Not Mastered

Answer: A

Explanation:

```
import requests, json

token = 'eyJhbGc ... yJbN8'

headers = {
    'Authorization': f'Bearer {token}',
    'Content-Type': 'application/json'
}

payload = {
    "title": "DevNet Webex Discussion",
    "password": "AGrtgl234",
    "start": "2020-11-10T15:00:00Z",
    "end": "2020-11-10T17:00:00Z",
    "enabledAutoRecordMeeting": False,
    "allowAnyUserToBeCoHost": False
}

response = requests.request(" POST ", f'{BASE_URL}/ vl/meetings ',
    headers=headers, data=json.dumps( payload ))
print(response.text.encode('utf8'))
```

payload

PUT

token

vl/meeting

vl/meetings

POST

NEW QUESTION 423

.....

## Relate Links

**100% Pass Your 200-901 Exam with ExamBible Prep Materials**

<https://www.exambible.com/200-901-exam/>

## Contact us

We are proud of our high-quality customer service, which serves you around the clock 24/7.

Viste - <https://www.exambible.com/>