

Cisco

Exam Questions 350-601

Implementing and Operating Cisco Data Center Core Technologies



NEW QUESTION 1

A customer wants to offload some of its order processing to a public cloud environment. The customer environment is based on Cisco ACI and uses Puppet with containerized applications. The operations team requires a solution to orchestrate and optimize the cost of the new solution. Which product must be used to meet these requirements?

- A. Cisco Intersight
- B. Cisco Workload Optimization Manager
- C. Cisco CloudCenter
- D. Cisco Data Center Network Manager

Answer: C

Explanation:

<https://www.cisco.com/c/dam/en/us/products/collateral/cloud-systems-management/cloudcenter/white-paper-c1>

- Enforce multicloud governance by guiding user decisions to reduce risk
- Securely automate deployment to reduce manual effort and get consistent results
- Increase feature velocity via integration with developer tools to accelerate time to market (CI/CD = Puppet, Chef, and Ansible).
- Optimize cloud consumption to cut pay-per-use cloud costs

<https://www.cisco.com/c/en/us/products/collateral/cloud-systems-management/cloudcenter-suite/datasheet-c78>

NEW QUESTION 2

A network administrator must configure an extra keyring in Cisco UCS Manager. The key must provide a high level of encryption and secure authentication when users use the web interface. Which configuration command set must be applied to meet these requirements?

```
set https keyring kring7984
set https cipher-suite-mode secure
set https ssl-protocol tls1-2
commit-buffer
```

```
set https keyring kring7984
set https cipher-suite-mode secure
set https tls-protocol tls1-2
commit-buffer
```

```
set https keyring kring7984
set https cipher-suite-mode high
set https ssl-protocol tls1-2#
commit-buffer
```

```
set https keyring kring7984
set https cipher-suite-mode high
set https tls-protocol tls1-2
commit-buffer
```

- A. Option A
- B. Option B
- C. Option C
- D. Option D

Answer: C

Explanation:

https://www.cisco.com/c/en/us/td/docs/unified_computing/ucs/ucs-manager/CLI-User-Guides/Admin-Managem “cipher-suite-mode secure” is invalid command. “Cipher-suite-mode high” is valid command. “tls-protocol tls1-2” is invalid command. “Ssl-protocol tls1-2” is valid command.

```
UCS-A# scope system
UCS-A /system # scope services
UCS-A /system/services # enable https
UCS-A /system/services* # set https port 443
Warning: When committed, this closes all the web sessions.
UCS-A /system/services* # set https keyring kring7984
UCS-A /system/services* # set https cipher-suite-mode high
UCS-A /system/services* # set https ssl-protocol tls1-2
UCS-A /system/services* # commit-buffer
UCS-A /system/services #
```

NEW QUESTION 3

An engineer must configure HSRP protocol on two Cisco Nexus 9000 Series Switches running a virtual port channel. In addition, the HSRP implementation must meet these requirements:

>

It must allow more than 500 groups.

- > switch 1 must act as the primary switch.
- > Both switches must use a user-defined hardware address.

Drag and drop the commands from the right to complete a configuration of the HSRP on the left. The commands are used more than once. Not all commands are used.

```
! switch1

interface vlan300
ip 209.165.200.226/27
hsrp 300

ip 209.165.200.225

! switch2

interface vlan300
ip 209.165.200.227/27
hsrp 300

ip 209.165.200.225
```

mac-address 6000.6000.6000

hsrp version 1

priority 255

hsrp use-bia

priority 100

hsrp version 2

- A. Mastered
- B. Not Mastered

Answer: A

Explanation:

Switch 1:

Box 1 = hsrp version 2

Box 2 = priority 100

Box 3 = mac-address 6000.6000.6000

Switch 2:

Box 1 = hsrp version 2

Box 2 = priority 255

Box 3 = mac-address 6000.6000.6000

NEW QUESTION 4

An engineer must configure a Cisco UCS domain for monitoring and management by the Cisco Intersight SaaS platform. After the setup is complete, administrators must have full control to configure the device through Cisco UCS Manager and Intersight. Which set of actions accomplishes this task?

- A. Configure Device Connector Access Mode as Allow Control in Device Console Claim the device on Intersight as UCSM Managed Mode.
- B. Configure Device Connector Access Mode as Allow Control in Cisco UCS Manager Claim the device on intersightc as Intersight Managed Mode
- C. Configure Device Connector Access Moao as Allow Control in Device Consol
- D. Claim the device on intersight as Intersight Managed Mode
- E. Configure Device Connector Access Mode as Allow Control in Cisco UCS Manager Claim the device on intersight as UCSM Managed Mode
- F. Option A
- G. Option B
- H. Option C
- I. Option D

Answer: C

NEW QUESTION 5

Which feature must be enabled to support the use of JSON and XML encoding when a Cisco Nexus 7000 series switch is deployed?

- A. NX-API
- B. LLDP
- C. Open Agent Container
- D. Bash shell

Answer: A

Explanation:

https://www.cisco.com/c/en/us/td/docs/switches/datacenter/nexus7000/sw/programmability/guide/cisco_nexus7000_programmability_guide_8x/b-cisco-nexus7000-programmability-guide-8x_chapter_011.html

NEW QUESTION 6

What is a recommended design choice in a topology for multipathing iSCSI traffic?

- A. single initiator to dual targets
- B. initiators and targets in separate subnets
- C. dual initiators to a single target with bonded interfaces
- D. two NICs bended together on the initiator

Answer: A

Explanation:

https://www.cisco.com/c/en/us/td/docs/switches/datacenter/nexus1000/sw/4_2_1_s_v_1_5_1/system_management/configuration/guide/n1000v_system/n1000v_system_13iscsi.html#wp1052813

NEW QUESTION 7

A company is investigating different options for IT automation tools. The IT team has experience with python programming language and scripting using a declarative language. The proposed tool should be easy to set up and should not require installing an agent on target devices. The team will also need to build custom modules based on the python programming language to extend the tools functionality. Which automation tool should be used to meet these requirements?

- A. Puppet
- B. Ansible
- C. NX-API
- D. Chef

Answer: B

NEW QUESTION 8

Which solution provides remote and direct file-level access to users and systems?

- A. direct-attached storage
- B. Fibre Channel over Ethernet
- C. storage area network
- D. network-attached storage

Answer: D

NEW QUESTION 9

Refer to the exhibit.

```
FI-1# scope org /
FI-1 /org # create maint-policy maintenance
FI-1 /org/maint-policy* # set reboot-policy timer-automatic
FI-1 /org/maint-policy* # set soft-shutdown-timer never
```

Which action must be taken before the maintenance policy can be committed?

- A. Set the soft shutdown timer to a specific time.
- B. Associate a service profile to the maintenance policy.
- C. Set the policy to apply the change on the next reboot.
- D. Specify a maintenance time by selecting a schedule.

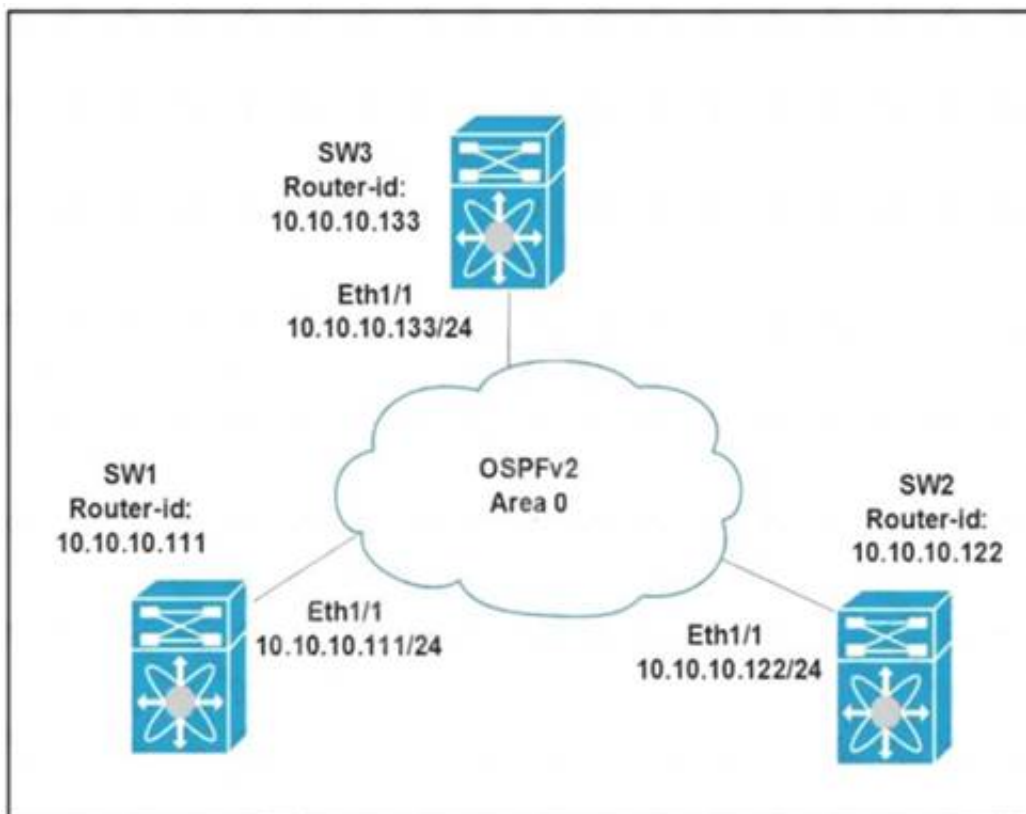
Answer: D

Explanation:

https://www.cisco.com/c/en/us/td/docs/unified_computing/ucs/ucs-manager/CLI-User-Guides/Admin-Management/3-1/b_Cisco_UCS_Manager_CLI_Administration_Mgmt_Guide_3_1/b_Cisco_UCS_Manager_CLI_Administration_Mgmt_Guide_3_1_chapter_01100.html

NEW QUESTION 10

Refer to the exhibit.



All switches are configured with the default OSPF priority. Which configuration should be applied to ensure that the SW2 Cisco Nexus switch controls the LSA floods and advertises the network to the remaining nodes in the OSPFv2 area?

- A. SW2# configure terminal SW2 (config)# interface ethernet 1/1 SW2 (config-if)# ip ospf priority 255
- B. SW2# configure terminal SW2 (config)# interface ethernet 1/1 SW2 (config-if)# ip ospf priority 1
- C. SW2# configure terminal SW2 (config)# router ospf 1 SW2 (config-router)# router-id 10.10.10.22
- D. SW2# configure terminal SW2 (config)# interface ethernet 1/1 SW2 (config-if)# ip ospf priority 0

Answer: A

Explanation:

Priority in OSPF is mainly used to influence/determine a designated router/backup designated router for a network. By default, the priority is 1 on all routers. A router with a high priority will always win the DR/BDR election process.

NEW QUESTION 10

A network administrator is creating a custom Django self-service portal that runs on a Linux server to automate the creation of new VLANs on Cisco UCS Manager. Which feature must be installed and configured on the server?

- A. Cisco UCS PowerTool Suite
- B. Cisco DNA Center API
- C. Cisco AppDynamics
- D. Cisco UCS Python SDK

Answer: C

NEW QUESTION 13

An engineer is enabling port security on a Cisco MDS 9000 Series Switch. Which feature of enabling port security on a Cisco MDS 9000 Series Switch must be considered?

- A. It always learns about switches that are logging in.
- B. It can be distributed by using Cisco Fabric services.
- C. It authorizes only the configured sWWN to participate in the fabric.
- D. It binds the fabric at the switch level.

Answer: B

Explanation:

Port Security Configuration Distribution

The port security feature uses the Cisco Fabric Services (CFS) infrastructure to enable efficient database management, provide a single point of configuration for the entire fabric in the VSAN, and enforce the port security policies throughout the fabric.

https://www.cisco.com/c/en/us/td/docs/switches/datacenter/mds9000/sw/6_2/configuration/guides/security/nx-o

NEW QUESTION 16

What is a feature of NFS?

- A. role-based access control
- B. Kerberos-based security model
- C. block-based file access
- D. zone-based access control

Answer: B

Explanation:

<https://www.cisco.com/c/en/us/support/docs/security-vpn/kerberos/16087-1.html#modifiednfs>

Kerberos Security Implications of the Modified NFS

This implementation is not completely secure. For starters, user data is still sent across the network in an unencrypted, and therefore interceptable, form. The low-level, per-transaction authentication is based on a <CLIENT-IP-ADDRESS, CLIENT-UID> pair provided unencrypted in the request packet. This information could be forged and thus security compromised. However, it should be noted that only while a user is actively using her/his files (that is, while logged in) are valid mappings in place and therefore this form of attack is limited to when the user in question is logged in. When a user is not logged in, no amount of IP address forgery will permit unauthorized access to her/his files.

NEW QUESTION 21

Which two configuration settings are available in the Cisco UCS Firmware Auto Sync Server policy? (Choose two.)

- A. Immediate Action
- B. User Acknowledge
- C. No Action
- D. Delayed Action
- E. User Notification

Answer: BC

NEW QUESTION 25

Where does the witness VM reside in a Cisco Hyperflex Edge deployment?

- A. Windows application
- B. Hyper Rex Data Platform
- C. Cisco Intersight
- D. local HyperFlex datastore

Answer: C

NEW QUESTION 26

Which component is upgraded by using an EPLD upgrade on a Cisco Nexus 9000 Series Switch?

- A. dual-homed fabric extenders
- B. BIOS
- C. field-programmable gate arrays
- D. ISSU of the NX-OS version

Answer: C

NEW QUESTION 31

What is required for using puppet in a Cisco NX-OS environment?

- A. Open Agent Container
- B. XML management interface
- C. NX-API
- D. OpenNP

Answer: A

NEW QUESTION 33

An engineer must implement a disaster recovery policy for the Cisco UCS infrastructure. The solution must meet these criteria:

- The Recovery Point Objective must be 48 hours.
- The backup must use encrypted transmission.
- The Recovery Time Objective must be 4 hours.

Which configuration set must be used in the scheduled backup to meet these requirements?

- ☒ Protocol: SFTP
Schedule: Weekly
- ☐ Protocol: FTP
Schedule: Bi-Weekly
- ☐ Protocol: TFTP
Schedule: Bi-Weekly
- ☐ Protocol: SCP
Schedule: Daily

- A. Option A
- B. Option B
- C. Option C

D. Option D

Answer: D

NEW QUESTION 37

What happens to the default host firmware policy after a Cisco UCS Manager upgrade?

- A. It is updated to contain the firmware entries of all the components
- B. It is replaced by a new default policy without any firmware entries.
- C. It is assigned to all the service profiles that include a host firmware policy.
- D. It is set to match the host firmware policy.

Answer: B

Explanation:

https://www.cisco.com/c/en/us/td/docs/unified_computing/ucs/ucs-manager/GUI-User-Guides/Firmware-Mgmt/

NEW QUESTION 40

An engineer must configure RBAC in Cisco UCS Manager in an existing data center environment. Which two roles can be used to configure LAN Connectivity policies? (Choose two.)

- A. network-admin
- B. server-profile
- C. admin
- D. enable
- E. operations

Answer: AC

Explanation:

https://www.cisco.com/c/en/us/td/docs/unified_computing/ucs/sw/gui/config/guide/1-4/UCSM_GUI_Configuration_Guide_1_4_chapter9.html
https://www.cisco.com/c/en/us/td/docs/unified_computing/ucs/ucsm_privileges/3-2/UCSM-Privileges-3_2/UCSM-Privileges-3_2_chapter_01.html

NEW QUESTION 41

After a Cisco Nexus 7000 Series Switch chassis replacement, the administrator discovers that all vPC-enabled LACP port channels are reinitialized. The administrator wants to prevent this issue the next time the chassis is replaced. Which two actions must be taken to meet this requirement before the isolated device is reloaded? (Choose two)

- A. Set the vPC MAC address to a lower value than the peer
- B. Change the vPC system-priority of the replacement chassis to a higher value than the peer if.
- C. Change the vPC system-priority of the replacement chassis to a lower value than the peer.
- D. Set the vPC MAC address to a higher value than the peer
- E. Configure auto-recovery to the disable state on both peers

Answer: BE

Explanation:

https://www.cisco.com/c/en/us/td/docs/switches/datacenter/nexus9000/sw/6-x/interfaces/configuration/guide/b_-----
<https://community.cisco.com/t5/networking-documents/vpc-auto-recovery-feature-in-nexus-7000/ta-p/3123651>

vPC and LACP

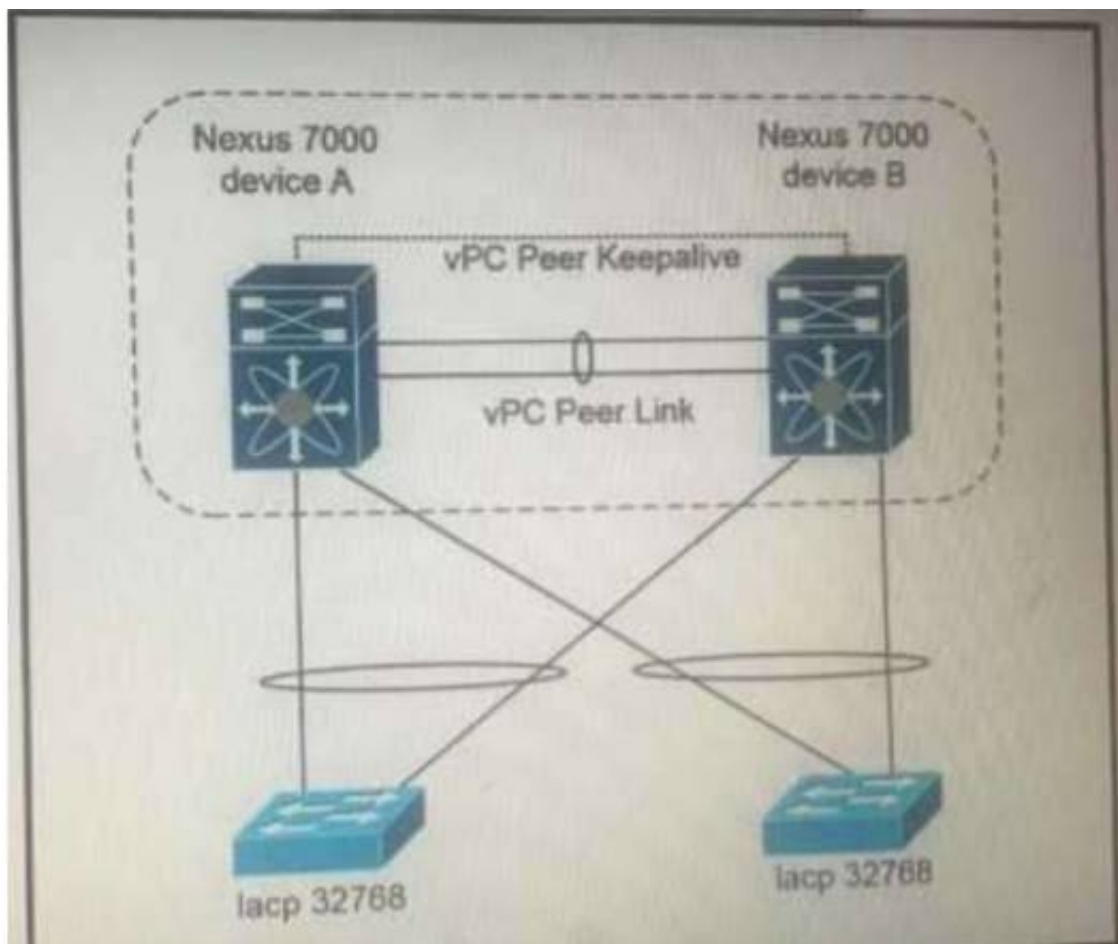
The Link Aggregation Control Protocol (LACP) uses the system MAC address of the vPC domain to form the LACP Aggregation Group (LAG) ID for the vPC.

You can use LACP on all the vPC EtherChannels, including those channels from the downstream switch. We recommend that you configure LACP with active mode on the interfaces on each EtherChannel on the vPC peer switches. This configuration allows you to more easily detect compatibility between switches, unidirectional links, and multihop connections, and provides dynamic reaction to run-time changes and link failures.

The vPC peer link supports 16 EtherChannel LACP interfaces. You should manually configure the system priority on the vPC peer-link switches to ensure that the vPC peer-link switches have a **higher LACP priority** than the downstream connected switches. A **lower numerical value system priority means a higher LACP priority**.

NEW QUESTION 46

Refer to the exhibit.



Which configuration ensure that the cisco Nexus 7000 series switches are the primary devices for LACP?

- A. `N7K_A(config-vpc-domain)# system-priority 4000`
`N7K_B(config-vpc-domain)# system-priority 4000`
- B. `N7K_A(config-vpc-domain)# system-priority 100`
`N7K_B(config-vpc-domain)# system-priority 200`
- C. `N7K_A(config-vpc-domain)# system-priority 32768`
`N7K_B(config-vpc-domain)# system-priority 32768`
- D. `N7K_A(config-vpc-domain)# role priority 1`
`N7K_B(config-vpc-domain)# role priority 2`

- A. Option A
 B. Option B
 C. Option C
 D. Option D

Answer: C

NEW QUESTION 48

An engineer needs to create a new user in the local user database on Cisco UCS Fabric Interconnect. The user needs permissions to change the following configuration inside UCS Manager version 3.1:

- vNIC and vHBA profiles
- Fan speed and power redundancy profile of UCS Manager

Which two roles must be assigned to a user to achieve this goal? (Choose two.)

- A. server-compute
 B. facility-manager
 C. operations
 D. server-equipment
 E. server-profile

Answer: AD

NEW QUESTION 50

A network engineer must perform a backup and restore of the Cisco Nexus 5000 Series Switch configuration. The backup must be made to an external backup server. The only protocol permitted between the Cisco Nexus switch and the backup server is UDP. The backup must be used when the current working configuration of the switch gets corrupted. Which set of steps must be taken to meet these requirements?

- A. * 1 Perform a startup-config backup to an FTP server.* 2 Copy startup-config in the boot flash to the running-config file
- B. * 1 Perform a running-config backup to an SFTP server* 2 Copy backup-config from the SFTP server to the running-config file
- C. * 1 Perform a running-config backup to an SCP server* 2 Copy running-config in the boot flash to the running-config file
- D. * 1 Perform a startup-config backup to a TFTP server* 2 Copy backup-config from the backup server to the running-config file

Answer: D

Explanation:

TFTP is the only protocol that uses UDP. FTP, SFTP, and SCP use TCP.

NEW QUESTION 53

Which two actions must be taken to directly connect a Fibre Channel storage array to a Cisco UCS domain? (Choose two.)

- A. Configure a new VSAN
- B. Create a new vHBA dedicated to the storage array
- C. Configure a Fibre Channel port channel
- D. Create a Storage Connection Policy
- E. Configure the Fibre Channel poet as a Fibre Channel storage port

Answer: AE

NEW QUESTION 57

A server engineer wants to control power usage on a Cisco UCS C-Series rack server down to the component level. Which two components support specific power limits? (Choose two.)

- A. storage controller
- B. network controller
- C. processor
- D. graphic card
- E. memory

Answer: CE

Explanation:

https://www.cisco.com/c/en/us/td/docs/unified_computing/ucs/c/sw/gui/config/guide/4_1/b_Cisco_UCS_C-serie

NEW QUESTION 60

An engineer is implementing the Cisco ACI fabric and wants to reduce the amount of TCAM resources consumed by the fabric The engineer also needs to ensure that all EPGs m a VRF consume the same services Which action should be taken to meet these requirements?

- A. Configure a single contract provided and consumed in all EPGs
- B. Configure preferred groups in the VRF for al EPGs
- C. Implement an unenforced VRF
- D. Implement vzAny feature

Answer: A

NEW QUESTION 65

Drag and drop the technologies from the left onto the description on the right.

NFSv2	uses client machine authentication
Kerberos	uses users authentication
NFSv4	authenticates clients and servers in NFSv4
RADIUS	authenticates clients to corporate directory systems

- A. Mastered
- B. Not Mastered

Answer: A

Explanation:

NFSv2 NFSv4
Kerberos RADIUS

NEW QUESTION 70

A Cisco MDS 9000 Series Switch is configured for SAN Analytics and SAN Telemetry Streaming. An engineer must enable analytics for NVMe on interfaces in the range of fc1/1-12. Due to a large amount of traffic generated in the SAN environment, the data must be collected at regular intervals of 60 seconds from ports fc 1-12 and then for ports fc13-24 for the next 60 seconds. Ports in the range fc4/13-14 were already enabled for analytics. Which set of commands must be used to meet these requirements?

- visit - <https://www.surepassexam.com>

Explanation:

https://tools.cisco.com/security/center/resources/unicast_reverse_path_forwarding

The ip verify unicast source reachable-via rx command enables Unicast RPF in strict mode. To enable loose mode, administrators can use the any option to enforce the requirement that the source IP address for a packet must appear in the routing table.

NEW QUESTION 78

A network engineer must enable port security on all cisco MDS series switches in the fabric. The requirement is to avoid the extensive manual configuration of the switch ports. Which action must be taken to meet these requirements?

- A. Activate CFS distribution and the auto-learning port security feature.
- B. Activate CFS distribution and file auto-learning port security feature on a per-VSAN basis.
- C. Enable the auto-learning port security feature on a per-VSAN basis.
- D. Enable the auto-learning port security feature.

Answer: B

Explanation:

You can instruct the switch to automatically learn (auto-learn) the port security configurations over a specified period. This feature allows any switch in the Cisco MDS 9000 Family to automatically learn about devices and switches that connect to it. Use this feature when you activate the port security feature for the first time as it saves tedious manual configuration for each port. You must configure auto-learning on a per-VSAN basis.

https://www.cisco.com/en/US/docs/storage/san_switches/mds9000/sw/rel_3_x/configuration/guides/fm_3_3_1/p

NEW QUESTION 83

Multiple roles are applied to a user on the Cisco MDS 9000 Series Switch. Which statement is true?

- A. Any commands that have conflicting settings between roles are denied.
- B. Access to a command takes priority over being denied access to a command.
- C. The first role assigned takes precedence over subsequent roles.
- D. The last role assigned takes precedence over previous roles.

Answer: B

Explanation:

Graphical user interface, text, application Description automatically generated



Note If you belong to **multiple roles**, you can execute a union of all the commands permitted by these roles. Access to a command takes priority over being **denied access** to a command. For example, suppose you belong to a TechDocs group and you were denied access to configuration commands. However, you also belong to the engineering group and have access to configuration commands. In this case, you will have access to configuration commands.

https://www.cisco.com/c/en/us/td/docs/switches/datacenter/mds9000/sw/5_0/configuration/guides/sec/nxos/sec/clicfgur.html

https://www.cisco.com/c/en/us/td/docs/switches/datacenter/mds9000/sw/8_x/config/security/cisco_mds9000_security_config_guide_8x/configuring_users_and_common_roles.html

NEW QUESTION 88

What is an advantage of streaming telemetry over SNMP?

- A. on-change traps sent to a receiver
- B. periodic push-based subscription messages
- C. periodic polling of the device status
- D. MD5-based authentication on polling

Answer: B

NEW QUESTION 91

What occurs when running the command install deactivate <filename> while a software maintenance upgrade is performed on a Cisco Nexus 9000 Series switch?

- A. The current set of packages is committed.
- B. The package is removed from the switch.
- C. The package features for the line card are disabled.
- D. The current upgrade stops.

Answer: C

NEW QUESTION 94

A network engineer connects the CNA interface of a server to a switch. The switch must bring down all of the VLANs on the interface that are not enabled for FCoE, but the VLANs that are enabled for FCoE should continue to carry SAN traffic without interruption. Which configuration should be applied to the switch to achieve this objective?

- A. switch(config)# interface Ethernet 2/1 switch(config-if)# shutdown lan
- B. switch(config)# interface vfc 2 switch(config-if)# shutdown lan
- C. switch(config)# Interface Ethernet vfc 2 switch(config-if)# shutdown force
- D. switch(config)# interface Ethernet 2/1 switch(config-if)# shutdown force

Answer: A

NEW QUESTION 98

An engineer deploys a new Cisco Nexus 5000 Series Switch in an existing environment with strict security policies. The new device should meet these requirements:

- Secure end-user ports with minimum configuration effort.
- Log security breaches and require manual recovery.
- Retain the switch configuration if the device restarts.

Which configuration must be used?

- A.
- ```
switchport port-security
switchport port-security max 1
switchport port-security violation shutdown
```
- B.
- ```
switchport port-security
switchport port-security violation shutdown
switchport port-security mac-address dynamic
```
- C.
- ```
switchport port-security
switchport port-security max 1
switchport port-security mac-address sticky
```
- D.
- ```
switchport port-security
switchport port-security violation restrict
switchport port-security mac-address sticky
```

Answer: C

NEW QUESTION 100

Which two statements describe modifying Cisco UCS user accounts? (Choose two.)

- A. Disabling a user account maintains all of the data in the Cisco UCS Fabric Interconnect.
- B. The admin account is used only to log on by using SSH.
- C. The password of the user account must contain a minimum of 10 characters.
- D. Local user accounts override the same account on a remote authentication server, such as TACACS, RADIUS, or LDAP.
- E. The password of the user account expires in 30 days.

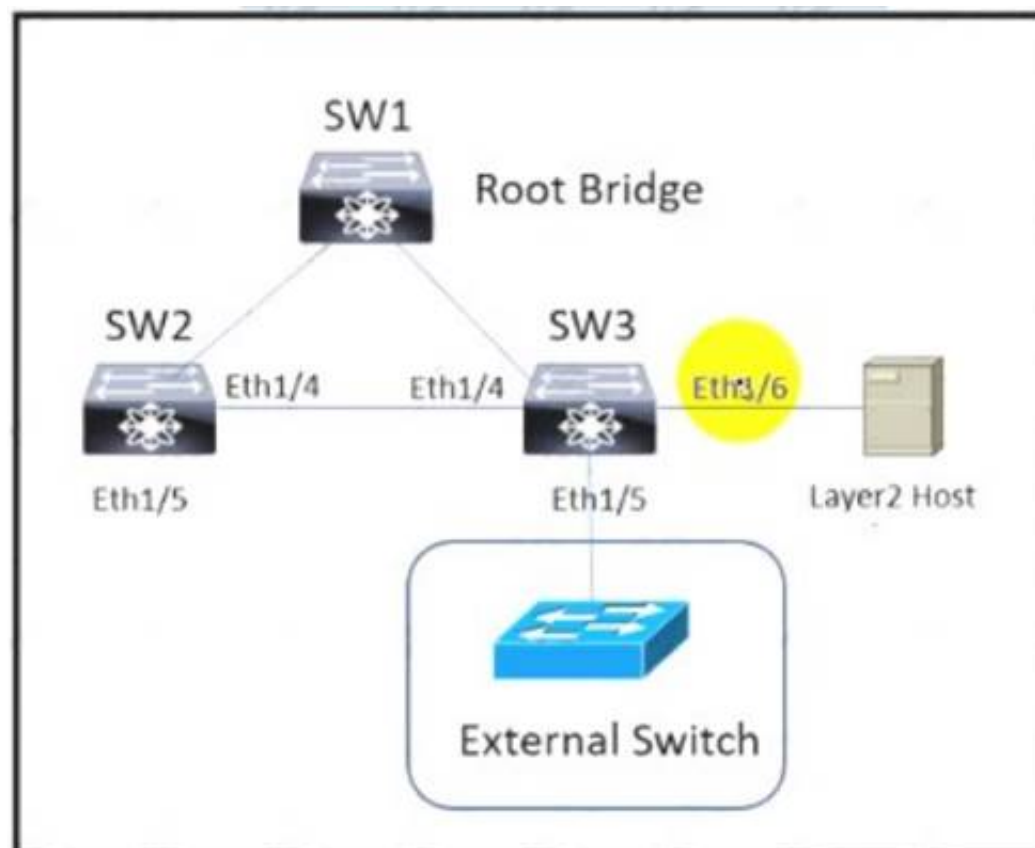
Answer: AD

Explanation:

https://www.cisco.com/c/en/us/td/docs/unified_computing/ucs/ucs-manager/GUI-User-Guides/Admin-Managem

NEW QUESTION 101

Refer to the exhibit.



The Cisco Nexus Series Switches SW1, SW2, and SW3 are connected via Layer 2 copper interfaces. An engineer implements loop prevention standard IEEE 802.1w on each VLAN to provide faster recovery from network changes or failures. The implementation has these requirements

- Interfaces that are connected to Layer 2 hosts must not receive STP BPDUs.
- The implementation must detect unidirectional links due to one-way traffic twisted-pair links
- Bridge assurance must be enabled between SW2 and SW3
- The Layer 2 domain must be protected from superior BPDUs that arrive from external switches.

Drag and drop the code snippets from the right onto the blanks in the code on the left to complete the configuration for SW3. Not all code snippets are used.

```
! SW3 configuration
interface ethernet 1/4
  spanning-tree port type
  udid
interface ethernet 1/5
  spanning-tree guard
interface ethernet 1/6
  spanning-tree port type
```

edge

aggressive

normal

network

root

bpdu

- A. Mastered
- B. Not Mastered

Answer: A

Explanation:

Network Aggressive Bpdu
edge

NEW QUESTION 104

What is an advantage of NAS compared to SAN?

- A. It offers enhanced NFS features.
- B. It offers enhanced security features
- C. It functions in an existing IP environment.
- D. It provides lossless throughput.

Answer: C

NEW QUESTION 107

Refer to the exhibit.

```

1  . /etc/init.d/functions
2  exec="/usr/bin/chef-client"
3  prog="chef-client"
4  [ -e /etc/sysconfig/$prog ] && . /etc/sysconfig/$prog
5  config=${CONFIG-/etc/chef/client.rb}
6  pidfile=${PIDFILE-/var/run/chef/client.pid}
7  reload() {
8  echo -n $"Reloading $prog: "
9      [ -n "$@" ] && {
10         retval=$?
11         echo
12         return $retval
13     }
14     case "$1" in
15         reload)
16             rh_status_q || exit 7
17             ;;
18         exit 2
19         esac
20     exit $?

```

A developer must create a Bash script that performs a Chef Client reload in the event of a system reset. Which command completes the script?

- ☒ `killproc -n $pidfile $exec -SIGHUP`
- ☐ `killproc -pi $pidfile $exec -HUP`
- ☐ `killproc -n $pidfile $exec -HUP`
- ☐ `killproc -p $pidfile $exec -HUP`

- A. Option A
- B. Option B
- C. Option C
- D. Option D

Answer: D

NEW QUESTION 112

A cisco Nexus 9000 series switch experiences a startup configuration corruption. The engineer must implement a procedure to recover configuration file from the switch. Which command set must be used?

- A. * 1. Copy the running-configuration to the startup configuration.* 2. Clear the current configuration of the switch.* 3. Restart the device.* 4. Copy a previously saved configuration file to the running configuration.
- B. * 1. Clear the current configuration of the switch* 2. Restart the device.* 3. Copy the running configuration to the startup configuration* 4. Copy a previously saved configuration file to the running configuration
- C. * 1. Clear the current configuration of the switch* 2. Restart the device.* 3. Copy a previously saved configuration file to the running-configuration* 4. Copy the running-configuration to the startup configuration.
- D. * 1.Restarting device.* 2. Copy the running-configuration file to a remote server.* 3. Clear the current configuration of the switch.* 4. Copy the running configuration to the startup configuration

Answer: C

Explanation:

Problems, such as memory corruption, can occur that make it necessary for you to recover your configuration from a backed-up version.

Each time that you enter a copy running-config startup-config command, a binary file is created and the ASCII file is updated. A valid binary configuration file reduces the overall boot time significantly. A binary file cannot be uploaded, but its contents can be used to overwrite the existing startup configuration. The write erase command clears the binary file.

SUMMARY STEPS

- * 1. write erase
- * 2. reload
- * 3. copy configuration-file running-configuration
- * 4. copy running-config startup-config <https://www.cisco.com/c/en/us/td/docs/switches/datacenter/nexus9000/sw/93x/fundamentals/configuration/guide>

NEW QUESTION 114

A network engineer must prevent data corruption due to cross fabric communication in an FCoE environment. Which configuration must be applied to the Cisco Nexus Unified Switches to achieve this objective?

- A. Switch(config)#fcoe fcmmap 0e,fc,2a
- B. Switch(config-if)# no fcoe fcf-priority 0
- C. Switch(config-if) # shutdown lan
- D. Switch(config) # no fcoe fcf-priority

Answer: A

Explanation:

- 2. switch(config)# fcoe fcmmap fabric-map
- 3. (Optional) switch(config)# no fcoe fcmmap fabric-map

DETAILED STEPS

	Command or Action	Purpose
Step 1	switch# configure terminal	Enters configuration mode.
Step 2	switch(config)# fcoe fcmmap fabric-map	Configures the global FC-Map. The default value is 0E.FC.00. The range is from 0E.FC.00 to 0E.FC.FF.
Step 3	switch(config)# no fcoe fcmmap fabric-map	(Optional) Resets the global FC-Map to the default value of 0E.FC.00.

This example shows how to configure the global FC-Map:

```
switch# configure terminal
switch(config)# fcoe fcmmap 0e.fc.2a
```

https://www.cisco.com/c/en/us/td/docs/switches/datacenter/nexus5000/sw/fcoe/b_Cisco_Nexus_5000_Series_NX-OS_Fibre_Channel_over_Ethernet_Configuration_Guide/Cisco_Nexus_5000_Series_NX-OS_Fibre_Channel_over_Ethernet_Configuration_Guide_chapter3.html
You can prevent data corruption due to cross-fabric talk by configuring an FC-Map that identifies the Fibre Channel fabric for this Cisco Nexus device. When the FC-Map is configured, the switch discards the MAC addresses that are not part of the current fabric.
switch(config)# fcoe fcmmap fabric-map Configures the global FC-Map. The default value is 0E.FC.00. The range is from 0E.FC.00 to 0E.FC.FF.
https://www.cisco.com/c/en/us/td/docs/switches/datacenter/nexus5000/sw/fcoe/513_n1_1/b_Cisco_n5k_fcoe_co

NEW QUESTION 119

A customer has a requirement for an automation solution that supports periodically acquiring configuration from a centralized server and aligning UCS servers to their desired state. Which open-source tool meets these requirements?

- A. SaltStack
- B. Terraform
- C. Puppet
- D. Kubemetes

Answer: C

Explanation:

"Overview of Puppet architecture: [...] After it receives a catalog, the Puppet agent applies the catalog by checking each resource that the catalog describes. If it finds any resources that are not in their desired state, it makes any changes necessary to correct them."
https://www.cisco.com/c/dam/en/us/products/collateral/servers-unified-computing/ucs-c-series-rackservers/whitepaper_c11-740103.pdf
<https://www.cisco.com/c/dam/en/us/products/collateral/servers-unified-computing/ucs-devops-integration-sol-br>
from DCCOR book under Puppet section The operation of the Puppet agent involves periodically connecting to the Puppet master, which in turn compiles and sends a configuration manifest to the agent. The agent reconciles this manifest with the current state of the node and updates state that is based on differences.

NEW QUESTION 123

An engineer must configure OSPF in the data center. The external routes have already been redistributed OSPF. The network must meet these criteria:
* The data centre servers must reach services in the cloud and the services behind the redistributed routes.
* The exit point toward the internet should be propagated only when there is a dynamically learned default route from the upstream router.
Which feature is required?

- A. Default-information originate
- B. Stubby area
- C. Totally stubby area
- D. Default-information originate always

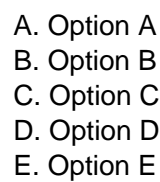
Answer: A

Explanation:

<https://learningnetwork.cisco.com/s/question/0D53i00000Kt544/defaultinformationoriginate-always>

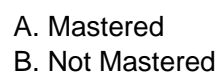
NEW QUESTION 128

An engineer must add a new VRF (DC DC) to the network that runs with Multiprotocol Border Gateway Protocol (MP-BGP) and EVPN.The requirement for the new VRF is to allow communication of network prefixes between PE1 and PE2. Which two sets of steps should be taken to complete the VRF configuration? (Choose two)



Answer: DE

Drag and drop the fields for configuring a full state backup file of the Cisco UCS Manager from the left onto the descriptions on the right.



Answer: A

Diagram Description automatically generated

Which two features are used to allow a nondisruptive upgrade for the ISSU process? (Choose two.)

- A. connectivity management processor
- B. nonstop forwarding
- C. graceful restart
- D. stateful switchover
- E. advanced services license

Answer: BD

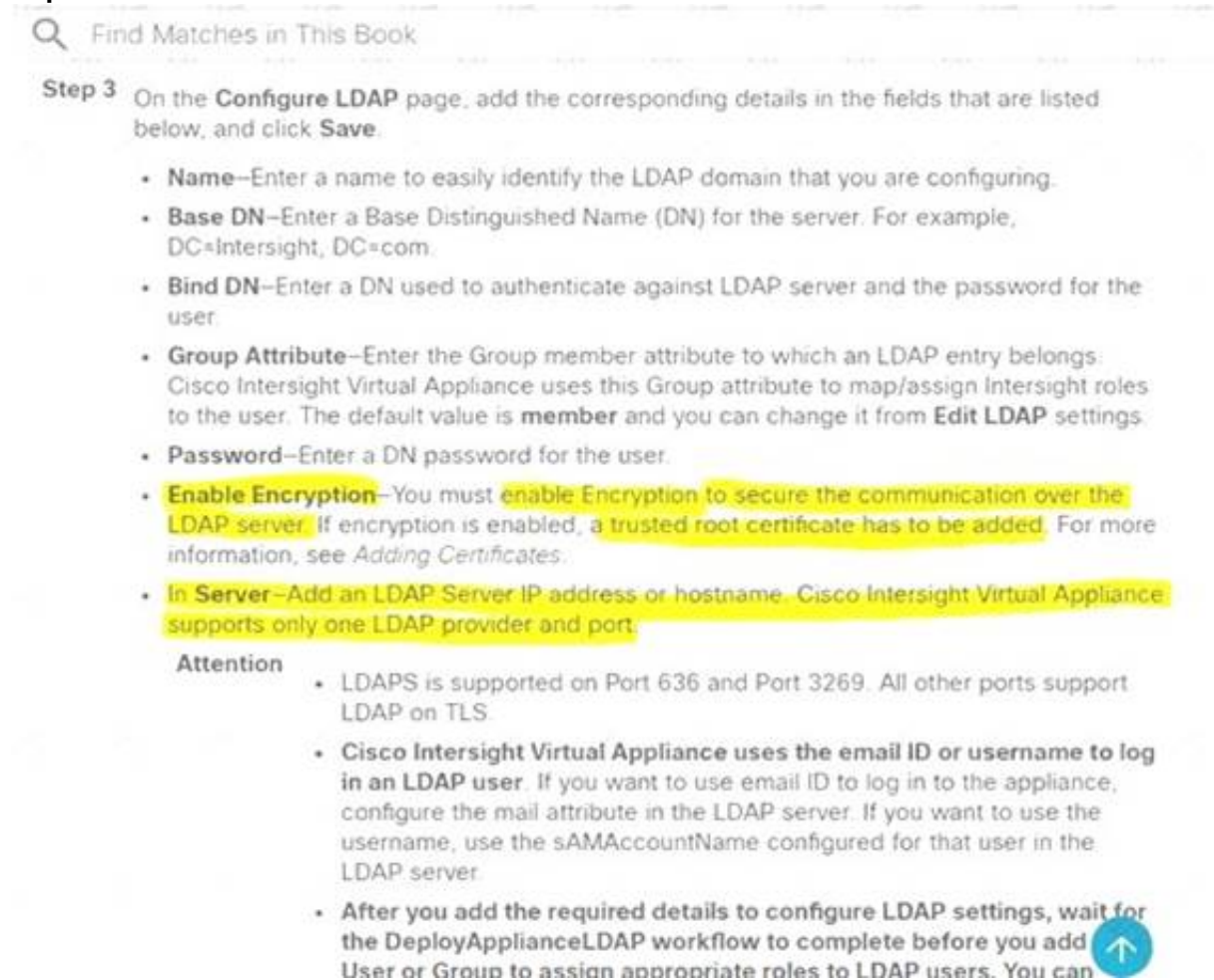
NEW QUESTION 133
An engineer is implementing Cisco Intersight in a secure environment. The environment must use LDAP directory service and ensure information integrity and

confidentiality. Which two steps must be taken to implement the solution? (Choose two.)

- A. Enable Encryption for LDAP
- B. Add a self-signed LDAP certificate to Cisco Intersight.
- C. Enable Certificate Signing Request in Cisco Intersight.
- D. Add a trusted root LDAP certificate to Cisco Intersight
- E. Add a trusted OAuth token to Cisco Intersight

Answer: AD

Explanation:



Step 3 On the **Configure LDAP** page, add the corresponding details in the fields that are listed below, and click **Save**.

- **Name**—Enter a name to easily identify the LDAP domain that you are configuring.
- **Base DN**—Enter a Base Distinguished Name (DN) for the server. For example, DC=Intersight, DC=com.
- **Bind DN**—Enter a DN used to authenticate against LDAP server and the password for the user.
- **Group Attribute**—Enter the Group member attribute to which an LDAP entry belongs: Cisco Intersight Virtual Appliance uses this Group attribute to map/assign Intersight roles to the user. The default value is **member** and you can change it from **Edit LDAP** settings.
- **Password**—Enter a DN password for the user.
- **Enable Encryption**—You must enable Encryption to secure the communication over the LDAP server. If encryption is enabled, a trusted root certificate has to be added. For more information, see *Adding Certificates*.
- **In Server**—Add an LDAP Server IP address or hostname. Cisco Intersight Virtual Appliance supports only one LDAP provider and port.

Attention

- LDAPS is supported on Port 636 and Port 3269. All other ports support LDAP on TLS.
- Cisco Intersight Virtual Appliance uses the email ID or username to log in an LDAP user. If you want to use email ID to log in to the appliance, configure the mail attribute in the LDAP server. If you want to use the username, use the sAMAccountName configured for that user in the LDAP server.
- After you add the required details to configure LDAP settings, wait for the DeployApplianceLDAP workflow to complete before you add User or Group to assign appropriate roles to LDAP users. You can

https://www.cisco.com/c/en/us/td/docs/unified_computing/Intersight/b_Cisco_Intersight_Appliance_Getting_Started_Guide/b_Cisco_Intersight_Appliance_Install_and_Upgrade_Guide_chapter_0110.html

NEW QUESTION 139

A network administrator is using the Cisco ESA with Cisco AMP to upload files to the cloud for analysis. The network is congested and is affecting communication. How will the Cisco ESA handle any files which need analysis?

- A. Cisco AMP calculates the SHA-256 fingerprint, caches it, and periodically attempts the upload.
- B. The Cisco ESA immediately makes another attempt to upload the file.
- C. The file is queued for upload when connectivity is restored.
- D. The file upload is abandoned.

Answer: A

NEW QUESTION 143

An engineer is implementing traffic monitoring for a server vNIC that is configured with fabric failover enabled. The requirement is for the traffic to be sent to an analyzer, even during a failure of one of the fabric interconnects. The analyzer is connected to unconfigured Ethernet ports on both fabric interconnects. Which configuration accomplishes this task?

- A. Create two traffic monitoring sessions with different names, one per fabric. Connect the analyzer connected to FI-B as the destination for both monitoring sessions.
- B. Create two traffic monitoring sessions with the same name, one per fabric. Connect an analyzer on each FI as the destination for the monitoring session local to that FI.
- C. Create two traffic monitoring sessions with the same name, one per fabric. Connect the analyzer connected to FI-A as the destination for both monitoring sessions.
- D. Create two traffic monitoring sessions with different names, one per fabric. Connect an analyzer on each FI as the destination for the monitoring session local to the FI.

Answer: A

NEW QUESTION 147

An engineer must create a scheduler configuration to create two backup jobs per day. The backup file must be copied to a server in the operations VRF. Which configuration accomplishes this task?

A)

```

scheduler schedule name CNFGBACKUP
  job name BACKUP-JOB
  copy running-config tftp://10.19.11.12/${SWITCHNAME}-${TIMESTAMP}.cfg vrf operations
  time start now repeat 12:00
  
```

B)

```
scheduler schedule name CNFGBACKUP
job name BACKUP-JOB
show tech-support | redirect vrf operations tftp://10.19.11.12/$(SWITCHNAME)-$(TIMESTAMP).cfg
time start daily 12:30 0:30
```

C)

```
scheduler schedule name CNFGBACKUP
job name BACKUP-JOB
copy startup-config tftp://10.19.11.12/$(SWITCHNAME)-$(TIMESTAMP).cfg
time daily 12:30 0:30
```

D)

```
scheduler schedule name CNFGBACKUP
job name BACKUP-JOB
copy vrf operations config tftp://10.19.11.12/$(SWITCHNAME)-$(TIMESTAMP).cfg
time start 12:30 repeat 12
```

- A. Option A
- B. Option B
- C. Option C
- D. Option D

Answer: A

NEW QUESTION 151

A customer requires a solution to orchestrate the configuration of storage arrays, firewalls, and Cisco ACI networking. Additionally, the orchestration product must support open automation and a service catalog. Which solution meets these requirements?

- A. Cisco UCS Director
- B. Cisco Intersight
- C. Cisco Data Center Network Manager
- D. Cisco Workload Optimization Manager

Answer: C

NEW QUESTION 153

Which statement describes monitoring Fibre Channel traffic on a Cisco UCS 6332 Fabric Interconnect?

- A. Fibre Channel traffic is monitored only on one vHBA per server.
- B. The destination port for monitoring must be an unassigned Fibre Channel port.
- C. The monitoring of Fibre Channel traffic is limited to the default VSAN.
- D. Fibre Channel traffic is capable to be monitored as it is encapsulated as FCoE.

Answer: D

Explanation:

You can monitor Fibre Channel traffic using either a Fibre Channel traffic analyzer or an Ethernet traffic analyzer. When Fibre Channel traffic is monitored with an Ethernet traffic monitoring session, at an Ethernet destination port, the destination traffic is FCoE. The Cisco UCS 6300 Fabric Interconnect supports FC SPAN only on the ingress side. A Fibre Channel port on a Cisco UCS 6248 Fabric Interconnect cannot be configured as a source port.

https://www.cisco.com/c/en/us/td/docs/unified_computing/ucs/ucs-manager/GUI-User-Guides/System-Monitoring/3-2/b_UCSM_GUI_System_Monitoring_Guide_3_2/b_UCSM_GUI_System_Monitoring_Guide_3_2_chapter_01101.pdf

NEW QUESTION 154

What is a characteristic of EPLD updates on Cisco MDS 9000 Series Switches?

- A. EPLD updates are installed only via the Cisco DCNM GUI
- B. EPLD packages update hardware functionality on a device
- C. EPLD bundles are released separately from a Cisco MDS NX-OS release
- D. EPLD updates are nondisruptive to traffic flow

Answer: B

Explanation:

https://www.cisco.com/c/en/us/td/docs/switches/datacenter/mds9000/sw/6_2/release/notes/epld/epld_rn.htm

Introduction

Switches and directors in the Cisco MDS 9000 Series contain several electrical programmable logical devices (EPLDs) that provide hardware functionalities in all of the modules. As of Cisco MDS SAN-OS Release 1.2, EPLD image upgrades are periodically provided to include enhanced hardware functionality or to resolve known issues.

NEW QUESTION 155

An engineer must configure a Nexus 7000 series switch for HSRP on VLAN 100. When fully functional, the router must be the active master. Which set of commands must be used to implement the scenario?

- ☒ feature hsrp
interface vlan100
ip address 10.1.1.2 255.255.255.0
priority 120
hsrp version 2
hsrp 1000
ip 10.1.1.1
- ☐ feature hsrp
interface vlan100
ip address 10.1.1.2 255.255.255.0
priority 100
hsrp version 2
hsrp 1000
ip 10.1.1.1
- ☐ feature-set hsrp
interface vlan100
ip address 10.1.1.2 255.255.255.0
priority 110
hsrp version 2
hsrp 1000
ip 10.1.1.1
- ☐ feature-set hsrp
interface vlan100
ip address 10.1.1.2 255.255.255.0
priority 80
hsrp version 2
hsrp 1000
ip 10.1.1.1

- A. Option A
- B. Option B
- C. Option C
- D. Option D

Answer: A

NEW QUESTION 156

A Cisco MDS 9000 series storage Switch has reloaded unexpectedly. Where does the engineer look for the latest core dump file?

- A. /mnt/core
- B. /mnt/pss
- C. /mnt/logs
- D. /mnt/recovery

Answer: B

Explanation:

Graphical user interface, text, application, email Description automatically generated

Saving Cores

You can save cores (from the active supervisor module, the standby supervisor module, or any switching module) to an external CompactFlash (slot 0) or to a TFTP server in one of two ways:

- On demand—Copies a single file based on the provided process ID.
- Periodically—Copies core files periodically as configured by the user.

A new scheme overwrites any previously issued scheme. For example, if you perform another core log copy task, the cores are periodically saved to the new location or file.

Saving the Last Core to Bootflash

This last core dump is automatically saved to bootflash in the **/mnt/pss/** partition before the switchover or reboot occurs. Three minutes after the supervisor module reboots, the saved last core is restored from the flash partition (**/mnt/pss**) back to its original RAM location. This restoration is a background process and is not visible to the user.

https://www.cisco.com/c/en/us/td/docs/switches/datacenter/mds9000/sw/6_2/configuration/guides/system_management/nx-os/sysmgmt_cli_6-x/sys.html
https://www.cisco.com/c/en/us/td/docs/switches/datacenter/mds9000/sw/6_2/configuration/guides/system_management/nx-os/sysmgmt_cli_6-x/sys.html#37039

NEW QUESTION 159

What is an advantage of NFS as compared to Fibre Channel?

- A. NFS enable thin provisioning for LUNs.
- B. NFS provides the dynamic allocation of storage capacity.
- C. NFS removes the impact of IP overhead.
- D. NFS provides direct access to the underlying storage hardware.

Answer: B

Explanation:

<https://www.ciscolive.com/c/dam/r/ciscolive/apjc/docs/2018/pdf/BRKINI-1011.pdf>

NEW QUESTION 163

An engineer implements a Cisco UCS C-Series Server that must adhere to these security requirements:

- Unencrypted communication must be disabled.
- The session timeout must not exceed 15 minutes.
- Unencrypted traffic must be automatically diverted.
- CLI-based management must use nondefault ports.

Which configuration set meets these requirements?

☒ XML API Enabled
 HTTP Port: 8080 / HTTPS Port: 8443
 IPMI over LAN Enabled
 Randomized Encryption Key

☐ HTTP Port: 80 / HTTPS Port: 443
 Session Timeout: 900
 Redirect HTTP to HTTPS Enabled
 SSH Port: 2022

☐ Redfish Enabled checked
 Redfish Port: 443
 SSH Enabled checked
 HTTPS Port: 8443

☐ SSH Enabled
 SSH Port: 8022
 SSH Timeout: 1200
 IPMI over LAN Enabled

- A. Option A
- B. Option B
- C. Option C
- D. Option D

Answer: B

NEW QUESTION 166

Which command reduces the amount of time it takes to complete the ISSU on a Cisco Nexus 7000 series switch that has dual supervisor modules and two I/O modules?

- A. install all kickstart <image>system<image>parallel
- B. install all epld bootflash:<image>
- C. install all epld bootflash:<image>
- D. install all kickstart<image>system<image>

Answer: A

Explanation:

Graphical user interface, text, application Description automatically generated

Parallel Upgrade

Parallel Upgrade with I/O Modules

Starting with Cisco NX-OS Release 5.2(1), multiple linecards can be simultaneously upgraded, and the infrastructure support is available. This decreases the ISSU time when compared with an ISSU upgrade that is done serially (one card at a time).

To start a parallel upgrade, use the following command: **install all kickstart image system image parallel**

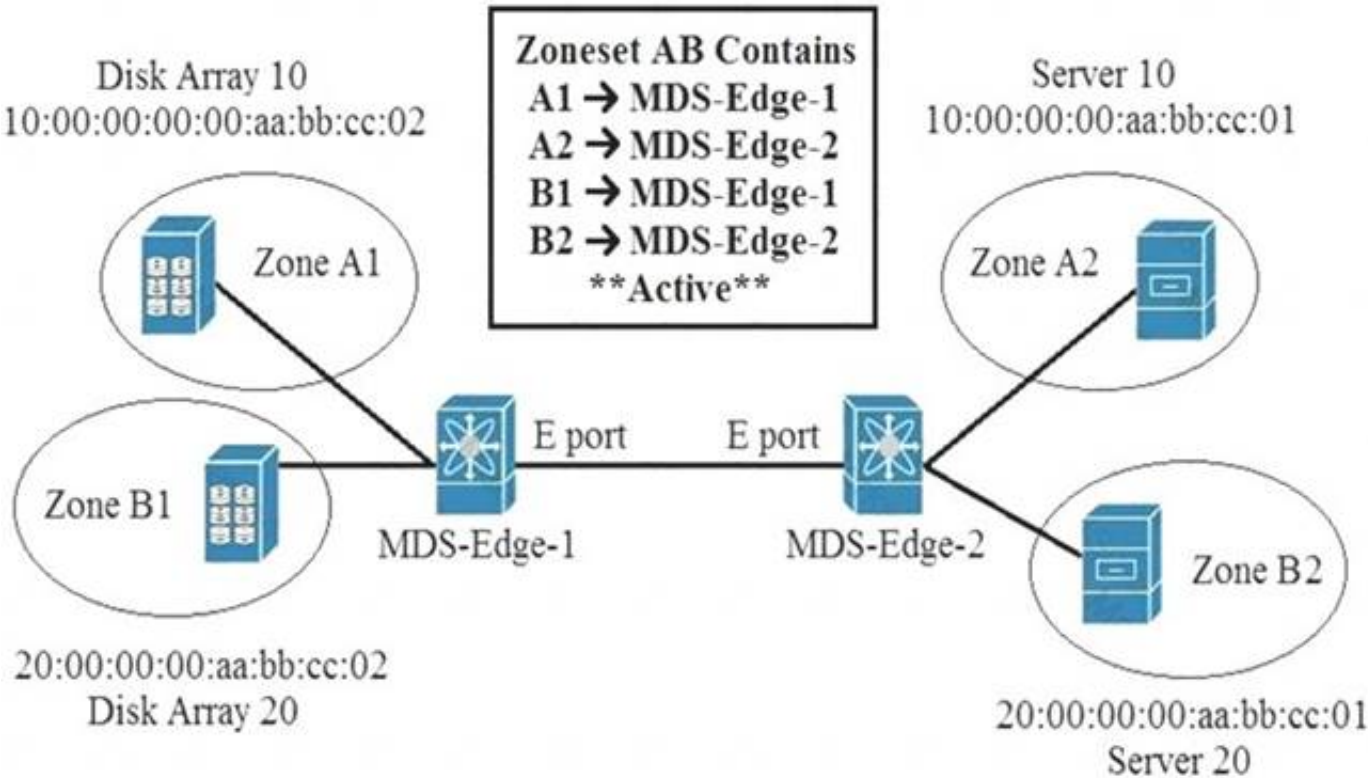
Up to three linecards can be upgraded in parallel with this command. During the upgrade process, the upgrade of the linecards is displayed in the output as follows:

```
Non-disruptive upgrading.
[#          ] 0%
Module 5 upgrade completed successfully.
.
.
.
Module 3 upgrade completed successfully.
```

https://www.cisco.com/c/en/us/td/docs/switches/datacenter/nexus7000/sw/upgrade/guide/cisco_nexus7000_software_upgrade_and_downgrade_guide_8x.html
https://www.cisco.com/c/en/us/td/docs/switches/datacenter/sw/7_x/nx-os/upgrade/guide/b_Cisco_Nexus_7000_Series_NX-

NEW QUESTION 171

Refer to the exhibit.



An engineer is implementing zoning on two Cisco MDS switches. After the implementation is finished, E Ports that connect the two Cisco MDS switches becomes isolated. What is wrong with the implementation?

- A. E Ports on both MDS switches must be configured as F ports for the zoning to function.
- B. Zones are local to the MDS switch and name service must be used to activate the connection between E ports.
- C. Different zone set names must be configured on both MDS switches.
- D. Zones must have the same name on both MDS switches for the E ports to function.

Answer: D

Explanation:

When two switches in a fabric are merged using a TE or E port, these TE and E ports may become isolated when the active zone set databases are different between the two switches or fabrics." https://www.cisco.com/c/en/us/td/docs/switches/datacenter/mds9000/sw/6_2/configuration/guides/fabric/nxos/n

NEW QUESTION 176

Drag and drop the mechanisms to collect data from a network from the left onto their characteristics on the right

CLI-based scripts	Polling can take 5-10 minutes.
SNMP	Unstructured and susceptible to change and scripts failure.
syslog	It sends data from the device to a specific endpoint, for instance, JSON or by using Google protocol buffers.
telemetry	It pushes messages in the format "seq no:timestamp: %facility-severity MNEMONIC:description" and has limits in scale and efficiency.

- A. Mastered
- B. Not Mastered

Answer: A

Explanation:

Table Description automatically generated with low confidence

NEW QUESTION 177

Which two actions should be performed before upgrading the infrastructure and firmware of multiple UCS blades? (Choose two)

- A. Verify if the bootflash on the fabric interconnects in the Cisco UCS has at least 15% available space
- B. Enable Smart Call Home feature during the firmware upgrade process
- C. Verify if the bootflash on the fabric interconnects in the Cisco UCS has at least 10% available space
- D. Run the Check Conformance feature to verify that all your components are running the compatiblefirmware version after the upgrade
- E. Get Full State and All Configuration backup files before beginning the upgrade

Answer: DE

NEW QUESTION 181

An engineer must implement a Cisco UCS system at a customer site. One of the requirements is to implement SAN boot. The storage system maps the source WWPN to a unique LUN. Which method does Cisco recommend to configure the SAN boot?

- A. Create a SAN boot policy in which every initiator is mapped to the same target LUN.
- B. Define the vHBAs as bootable and leave the default values on the target definition.
- C. Define the vHBAs as bootable and leave the boot target definition empty.
- D. Create a SAN boot policy in which every initiator is mapped to a different target LUN.

Answer: A

Explanation:

While you have multiple zones consisting of FC vHBAs and storage target wwpsns for SAN Fabrics A and B, you are ultimately booting off of the same boot LUN. Multiple paths to get to the same boot device which correspond with the same LUN ID.
https://www.cisco.com/c/en/us/td/docs/unified_computing/ucs/ts/guide/UCSTroubleshooting/UCSTroubleshooting_chapter_0110.html#r_sanarrayconfigurationchecklist

NEW QUESTION 183

Refer to the exhibit.

```
show install all impact epld bootflash:n9000-epld.6.1.2.I3.1.img
```

What is the outcome of this command when the EPLD is updated on a Cisco Nexus 9000 series switch?

- A. displays the compatibility of the EPLD upgrade and the image in the bootflash
- B. shows a simulated upgrade of the EPLD
- C. upgrades the EPLD on the switch disruptively
- D. displays the impact of the upgrade on the operation of the switch

Answer: D

Explanation:

You can use the show install impact epld bootflash: command to determine whether the EPLDs can be upgraded for all the modules or for specific modules on a switch. This command indicates the current EPLD images, new EPLD images, and whether the upgrades would be disruptive to switch operations. <https://www.cisco.com/c/en/us/td/docs/switches/datacenter/nexus9000/sw/6-x/epld/n9k-epld-rn-61.html>

NEW QUESTION 184

Cisco Nexus 9000 Series Switches are configured with LACP protocol and default aging timers. What is the impact on the LACP peer during an ISSU upgrade?

- A. The LACP peer connection terminates.
- B. The LACP peer session remains up.
- C. The LACP peer renegotiates the adjacency.
- D. The LACP peer connection resets.

Answer: B

Explanation:

https://www.cisco.com/c/en/us/td/docs/switches/datacenter/nexus9000/sw/6-x/interfaces/configuration/guide/b_ISSU_and_ungraceful_switchovers_are_not_supported_with_LACP_fast_timers

NEW QUESTION 186

The Cisco UCS blade chassis must send SNMPv3 traps to a network monitoring system. The SNMP trap messages should be authenticated and have protection from closure. Which SNMP security privileged level should be configured?

- A. noPriv
- B. auth
- C. noAuth
- D. priv

Answer: D

NEW QUESTION 191

A customer reports Fibre Channel login requests to a cisco MDS 9000 series Switch from an unauthorized source. The customer requires a feature that will allow all devices already logged in and learned in and learned to be added to the Fibre channel active database. Which two features must be enabled to accomplish this goal?
(Choose two.)

- A. Auto-learning
- B. Port security
- C. Enhanced zoning
- D. Device aliases
- E. Smart aliases

Answer: AB

Explanation:

https://www.cisco.com/en/US/docs/storage/san_switches/mds9000/sw/rel_3_x/configuration/guides/fm_3_3_1/p_Port_Security_Activation By default, the port security feature is not activated in any switch in the Cisco MDS 9000 Family. By activating the port security feature, the following apply: Auto-learning is also

automatically enabled, which means: From this point, auto-learning happens for the devices or interfaces that were already logged into the switch and also for the new devices will login in future. You cannot activate the database until you disable auto-learning. All the devices that are already logged in are learned and are added to the active database. All entries in the configured database are copied to the active database. After the database is activated, subsequent device login is subject to the activated port bound WWN pairs, excluding the auto-learned entries. You must disable auto-learning before the auto-learned entries become activated.

NEW QUESTION 194

Drag and drop the Hyperflex characteristics from the left onto the appropriate Hyper Hex node types on the right.

uses only SSD drives for caching

contains HDDs for the capacity layer

uses SSD drives or NVMe storage for caching

has SSD drives for the capacity layer

recommended for repeatable and sustainable high performance, especially for scenarios with a larger working set of data

recommended for capacity-sensitive solutions, lower budgets, and fewer performance-sensitive applications

Hybrid Node

All Flash Node

- A. Mastered
- B. Not Mastered

Answer: A

Explanation:

uses only SSD drives for caching

contains HDDs for the capacity layer

uses SSD drives or NVMe storage for caching

has SSD drives for the capacity layer

recommended for repeatable and sustainable high performance, especially for scenarios with a larger working set of data

recommended for capacity-sensitive solutions, lower budgets, and fewer performance-sensitive applications

Hybrid Node

uses only SSD drives for caching

contains HDDs for the capacity layer

recommended for capacity-sensitive solutions, lower budgets, and fewer performance-sensitive applications

All Flash Node

uses SSD drives or NVMe storage for caching

has SSD drives for the capacity layer

recommended for repeatable and sustainable high performance, especially for scenarios with a larger working set of data

NEW QUESTION 196

Which protocol does Cisco Hyperflex use to share data among nodes in a VMware vSphere environment?

- A. CIFS
- B. FCoE
- C. SMB
- D. NFS

Answer: D

NEW QUESTION 200

A network architect must design an automation solution to initially support networking and also support the server infrastructure in the future. To keep configuration consistency, the network team requires a solution that enforces the desired state of the network and reverts any manual configuration. Which solution meets these goals?

- A. NX-API
- B. Ansible
- C. Terraform
- D. Puppet

Answer: D

NEW QUESTION 202

Drag and drop the characteristics from the left onto the correct storage systems on the right.

expensive and complex to manage

moderately expensive and simple to configure

most resilient, highly scalable, and high-performance storage

appliance providing file system access

lacks scalability, performance, and advanced features

NAS

SAN

- A. Mastered
- B. Not Mastered

Answer: A

Explanation:

Graphical user interface Description automatically generated with medium confidence
2,4,5 – NAS 1,3 - SAN

NEW QUESTION 206

An engineer requires the Cisco Fabric Services to distribute NTP configuration only to the members within the scope of a VSAN that belongs to a Cisco Unified Network. Which scope distribution must be selected to meet this requirement?

- A. Logical scope
- B. Physical scope
- C. Uncoordinated scope
- D. Coordinated scope

Answer: A

NEW QUESTION 210

An engineer is implementing a Cisco ACI fabric and must use static VLAN range as part of a VMM deployment. The static VLAN must be incorporated into the dynamic VLAN pool. The existing VLAN pool is set for dynamic allocation. Which action accomplishes this goal?

- A. Add the VLAN to the pool configured with Inherit Allocation Mode from parent.
- B. Change the existing VLAN pool to static allocation mode.
- C. Add a static VLAN allocation range to the VLAN pool.
- D. Create a static reservation within the dynamic VLAN pool.

Answer: C

NEW QUESTION 213

A network architect considers a Cisco HyperFlex design solution for a company. The proposed solution is for a virtual environment that is not performance-sensitive, but the solution must have high storage capacity and a low cost. Which Cisco HyperFlex storage configuration should be used?

- A. All-Flash

- B. Hybrid
- C. All-SAN
- D. All-NVMe

Answer: B

Explanation:

<https://www.cisco.com/c/en/us/products/collateral/hyperconverged-infrastructure/hyperflex-hx-series/white-pap> Hybrid contains HDD for capacity.

NEW QUESTION 215

Refer to the exhibit

MDS-B# show role			
Role: network-admin			
Description: Predefined Network Admin group. This role cannot be modified.			
Vsan policy: permit (default)			

Rule	Type	Command-type	Feature

1	permit	clear	*
2	permit	config	*
3	permit	debug	*
4	permit	exec	*
5	permit	show	*
Role: default-role			
Description: This is a system defined role and applies to all users.			
Vsan policy: permit (default)			

Rule	Type	Command-type	Feature

1	permit	show	system
2	permit	show	snmp
3	permit	show	module
4	permit	show	hardware
5	permit	show	environment
Role: san-users			
Description: SAN users			
Vsan policy: permit (default)			

A network engineer created a new role to be assigned to the SAN users The requirement is for users to have these characteristics

- > permitted to show access to the system, SNMP, module, and hardware information
- > permitted to run debug zone and exec fcping commands
- > restricted from accessing show feature environment command

Which configuration set meets these requirements?

- A. Option A
- B. Option B
- C. Option C
- D. Option D

Answer: D

NEW QUESTION 217

Drag and drop the steps on the left onto the order that they must be implemented on the right to recover a fabric interconnect when there is no working image on the bootflash.

Copy the main image files.	step 1
Configure the management interfaces.	step 2
Boot the kickstart image using TFTP.	step 3
Install the files.	step 4

- A. Mastered
- B. Not Mastered


Answer: A

Explanation:

Copy the main image files.	Boot the kickstart image using TFTP.
Configure the management interfaces.	Configure the management interfaces.
Boot the kickstart image using TFTP.	Copy the main image files.
Install the files.	Install the files.

NEW QUESTION 220

Refer to the exhibit.



```
hostname N9K-1
vpc domain 100
  role priority 100
  peer-keepalive destination 10.10.10.2
interface port-channel100
  switchport mode trunk
  spanning-tree port type network
  vpc peer-link
interface Ethernet1/1
  switchport mode trunk
interface Ethernet1/2
  switchport mode trunk
interface mgmt0
  vrf member management
  ip address 10.10.10.1/24
```

```
hostname N9K-2
vpc domain 100
  role priority 90
  peer-keepalive destination 10.10.10.1
interface port-channel100
  switchport mode trunk
  spanning-tree port type network
  vpc peer-link
interface Ethernet1/1
  switchport mode trunk
interface Ethernet1/2
  switchport mode trunk
interface mgmt0
  vrf member management
  ip address 10.10.10.2/24
```

Which action completes the vPC domain implementation?

- A. Allow VLANs on the vPC peer link member interfaces.
- B. Include the VRF management on the vPC domain.
- C. Configure the system MAC on the vPC domain.
- D. Add the vPC member ports to the vPC channel group.

Answer: D

NEW QUESTION 225

Which Cisco UCS Manager XML encoded backup type must be used to back up user names, roles, and service profiles?

- A. Full State Configuration
- B. Logical Configuration
- C. All Configuration
- D. System Configuration

Answer: C

NEW QUESTION 226

Drag and drop the keywords onto the URL request to collect all the subnets configured under tenant Production using a REST API. Not all options are used.

https://{apic_ip}}/api/

/uni/tn-Production.json?

=

&

=fvSubenet

target-subtree-class

query-target-filter

query-target

children

subtree

class

mo

- A. Mastered
- B. Not Mastered

Answer: A

Explanation:
Graphical user interface, text Description automatically generated

NEW QUESTION 231
Refer to the exhibit.

```
; Router 1 configuration
interface loopback1
  ip address 10.10.32.121/30
  ip ospf network point-to-point
  ip router ospf 1 area 0.0.0.0
  ip pim sparse-mode

ip pim rp-address 10.10.32.122 group-list 225.0.0.0/8 bi-dir
```

In a bidirectional PIM network using Phantom RP as an RP redundancy mechanism, two Cisco NX-OS routers have these requirements:

- R1 must be the active RP.
- R2 must be the backup RP that is used only if R1 is not reachable

Drag and drop the configuration steps to complete the configuration for Router 2. Not all configuration steps are used.

```
; Router 2 configuration
interface loopback1
  ip address
  ip ospf network
  ip router ospf 1 area 0.0.0.0
  ip pim

ip pim rp-address group-list 225.0.0.0/8 bi-dir
```

10.10.32.121/32

10.10.32.121

point-to-point

broadcast

10.10.32.121/29

10.10.32.122

sparse-mode

dense-mode

- A. Mastered
- B. Not Mastered

Answer: A

Explanation:

Graphical user interface, text, application Description automatically generated

Answer :

ip address 10.10.32.121/29

ip ospf network point-to-point

router ospf 1 area 0.0.0.0

ip pim sparse-mode

ip pim rp-address 10.10.32.122 group-list 255.0.0.0/8 bi-dir

NEW QUESTION 232

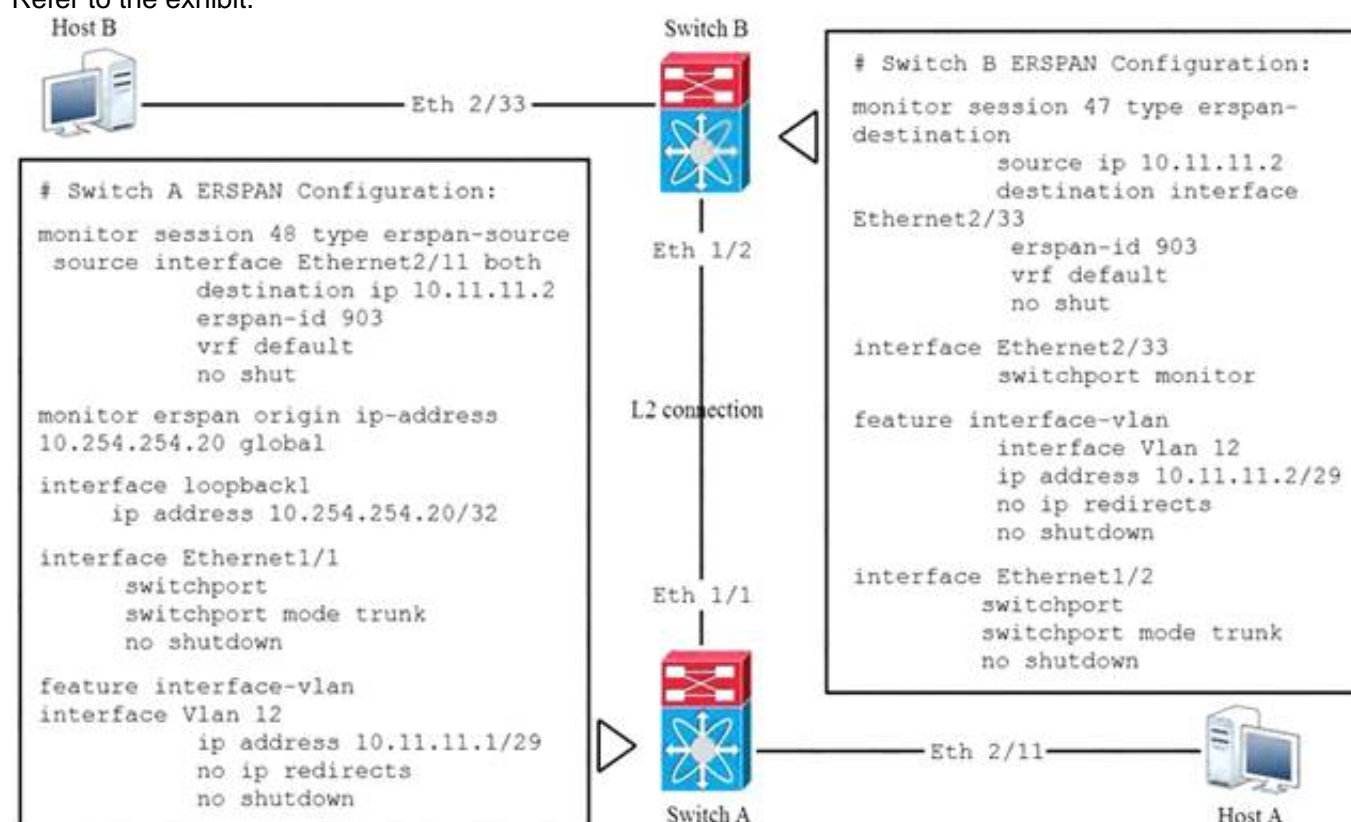
An engineer configures a role for a new user in Cisco UCS Manager The role should allow the user to configure vHBAs, vNICs, and server port types. Which role should be assigned to allow the engineer to complete this task?

- A. network administrator
- B. operations
- C. server-compute
- D. AAA administrator

Answer: A

NEW QUESTION 235

Refer to the exhibit.



Which statement about the ERSPAN configuration in this environment is true.

- A. Host A is the source of ERSPAN spanned traffic and host B is the traffic analyzer.
- B. Host B is the source of ERSPAN spanned traffic and host A is the traffic analyzer.
- C. The session number of the source of ERSPAN spanned traffic must have a session ID of 48 for the traffic analyzer to receive the traffic.
- D. The session number of the source of ERSPAN spanned traffic must have a session ID of 47 for the traffic analyzer to receive the traffic.

Answer: A

NEW QUESTION 240

An engineer must configure Cisco IMC server management NIC for autonegotiation. Which setting should be selected?

- A. Cisco card
- B. shared LOM
- C. dedicated
- D. shared LOM EXT

Answer: C

Explanation:

https://www.cisco.com/c/en/us/td/docs/unified_computing/ucs/c/sw/cli/config/guide/4_0/b_Cisco_UCS_CSeries_CLI_Configuration_Guide_40/b_Cisco_UCS_CSeries_CLI_Configuration_Guide_40_chapter_01000.html

<https://www.cisco.com/c/en/us/support/docs/servers-unified-computing/unified-computing-system/200221-Auto-negotiation-not-enabling-by-default.html>

NEW QUESTION 244

Refer to the exhibit.

```
switch# show vpc brief
Legend:
      (*) - local vPC is down, forwarding via vPC peer-link

vPC domain id          : 10
Peer status             : peer adjacency formed ok
vPC keep-alive status   : peer is alive
Configuration consistency status: success
Type-2 consistency status : success
vPC role                : primary
Number of vPCs configured : 1
Peer Gateway            : Enabled
Dual-active excluded VLANs : -

vPC Peer-link status
-----
id  Port  Status Active vlans
--  --
1   Po20  up    100-105

vPC status
-----
id  Port  Status Consistency Reason           Active vlans
--  --
7   Po7   up    success success           100-104
8   Po8   up    success success           100-102
9   Po9   up    success success           100-103
```

Which VLANs are capable to be assigned on vPC interfaces?

- A. 100-103
- B. 100-104
- C. 100-102
- D. 100-105

Answer: D

NEW QUESTION 246

An engineer must export the Cisco UCS Manager configuration for backup purposes. The requirement is to export the configuration that contains the AAA and RBAC configuration Also the file must be stored a human-readable format 'Much backup type must be selected to meet these requirements?

- A. logical configuration
- B. system configuration
- C. fun state
- D. all configuration

Answer: B

NEW QUESTION 248

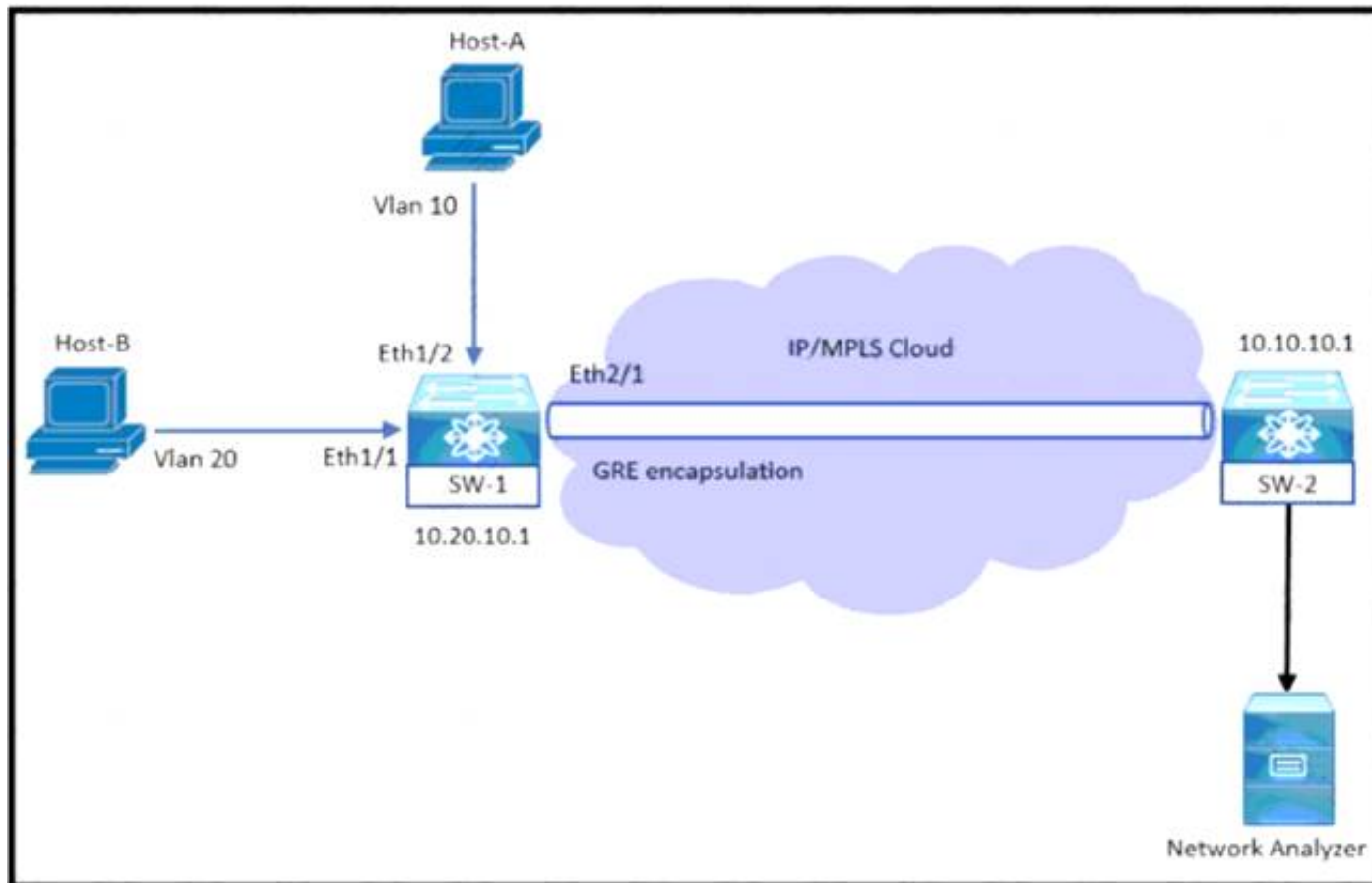
A network engineer must migrate a Cisco WSA virtual appliance from one physical host to another physical host by using VMware vMotion. What is a requirement for both physical hosts?

- A. The hosts must run Cisco AsyncOS 10.0 or greater.
- B. The hosts must have access to the same defined network.
- C. The hosts must run different versions of Cisco AsyncOS.
- D. The hosts must use a different datastore than the virtual appliance

Answer: B

NEW QUESTION 253

Refer to the exhibit.



An engineer monitors ingress traffic from Host-A and all traffic for VLAN 20 from Host-B Which configuration must be implemented to monitor and export traffic to Network Analyzer?

- ☐ SW-1(config)# monitor session 5
SW-1(config-monitor)# source interface ethernet 1/2 rx
SW-1(config-monitor)# source interface ethernet 1/1 tx
SW-1(config-monitor)# source vlan 20 both
SW-1(config-monitor)# destination ip 10.10.10.1
SW-1(config-monitor)# no shut
- ☐ SW-1(config)# monitor session 5 type erspan-source
SW-1(config-erspan-src)# source interface ethernet 1/2 rx
SW-1(config-erspan-src)# source vlan 20 both
SW-1(config-erspan-src)# destination ip 10.10.10.1
SW-1(config-erspan-src)# erspan-id 111
SW-1(config-erspan-src)# no shut
- ☐ SW-1(config)# monitor session 5 type erspan
SW-1(config-erspan-src)# source interface ethernet 1/2 rx
SW-1(config-erspan-src)# source interface ethernet 1/1 both
SW-1(config-erspan-src)# destination ip 10.10.10.1
SW-1(config-erspan-src)# mtu 1000
SW-1(config-erspan-src)# no shut
- ☐ SW-1(config)# monitor session 5
SW-1(config-monitor)# source interface ethernet 1/2 rx
SW-1(config-monitor)# source interface ethernet 1/1 both
SW-1(config-monitor)# source vlan 20 both
SW-1(config-monitor)# destination interface ethernet 2/1
SW-1(config-monitor)# no shut

- A. Option A
- B. Option B
- C. Option C
- D. Option D

Answer: B

NEW QUESTION 258

An engineer is implementing the Cisco ACI fabric and must create two different vPCs from leaf switches A and B. The vPCs are deployed as follows:

- vPC 1 encompasses ports Eth 1 /1 on leaf A and B and connects to server 1.
- vPC 2 encompasses port Eth1/2 on leaf A and B and connects to server 2.

A leaf switch profile listing leaves A and B is already configured Which ACI object must be created to meet these requirements?

- A. two vPC interface policy groups
- B. one access port interface policy group
- C. two PortChannel interface policy groups
- D. one vPC interface policy group

Answer: A

NEW QUESTION 263

An engineer must perform a nondisruptive software upgrade on a dual supervisor Cisco Nexus 7000 series switch. What is the cause of the upgrade being disruptive?

- A. The show install all impact command is not issued before the upgrade

- B. The kickstart image is installed by using the Install all kickstart image system image command
- C. Attempt to simultaneously upgrade more than three cards
- D. Change to the configuration settings or the network connections during the upgrade process

Answer: D

NEW QUESTION 267

Refer to the exhibit.

```
NEXUS (config)# feature tacacs+
NEXUS (config)# tacacs-server timeout 5
NEXUS (config)# tacacs-server directed-request
NEXUS (config)# tacacs-server deadtime 0
NEXUS (config)# tacacs server host 10.1.50.20 port 49
NEXUS (config)# tacacs-server host 10.1.50.20 key 7 "Flwhg123" timeout 1
NEXUS (config)# aaa group server tacacs+ ISE
NEXUS (config-tacacs+)# server 10.1.50.20
NEXUS (config-tacacs+)# deadtime 10
NEXUS (config-tacacs+)# use-vrf management
NEXUS (config-tacacs+)# source-interface mgmt 0
NEXUS (config)# aaa authentication login default group ISE
```

What is the result of implementing this configuration?

- A. The TACACS+ server uses the type-6 encrypted format.
- B. The switch queries the TACACS+ server by using a clear text PAP login.
- C. The timeout value on the TACACS+ server is 10 seconds.
- D. The switch queries the TACACS+ server by using an encrypted text PAP login.

Answer: D

Explanation:

tacacs-server key

To configure a global TACACS+ shared secret key, use the tacacs-server key command. To remove a configured shared secret, use the no form of this command.

tacacs-server key [0 | 7] shared-secret Syntax Description

7 (Optional) Configures a preshared key specified in encrypted text to authenticate communication between the TACACS+ client and server.

By default, the Cisco NX-OS device uses Password Authentication Protocol (PAP) authentication between the Cisco NX-OS device and the remote server. If you enable CHAP, you need to configure your RADIUS or TACACS+ server to recognize the CHAP vendor-specific attributes (VSAs).

NEW QUESTION 270

An engineer must perform backup and restore of the Cisco UCS Manager configuration. The configuration must be stored on a remote server via XML encoding. The backup must store the configurations of the chassis, FEX, rack servers, IOMs, and blade server. Which set of actions accomplishes these goals?

- A. Perform a logical configuration backup and run the replace import method.
- B. Perform a full state configuration backup and run the restore procedure.
- C. Perform a system configuration backup and run the merge import method
- D. Perform an all configuration backup and run the system restore procedure.

Answer: A

NEW QUESTION 272

Which virtualization feature is provided by network-attached storage?

- A. ALUA path redirection
- B. hypervisor host boot LUN
- C. VM cluster shared disk
- D. raw device passthrough

Answer: C

NEW QUESTION 273

An engineer must configure the HSRP protocol to implement redundancy using two Cisco Nexus Series Switches. In addition, the HSRP must meet these requirements:

- Switch1 must retain the primary role if switch2 goes offline
 - Switch1 must retain the primary role until normal conditions are restored.
 - Switch1 and switch2 must ensure that the routing tables are converged before taking the active role
 - switch2 must retain the primary role if the default gateway is not reachable
- Drag and drop the configuration commands from the right to the left to meet the requirements. The commands are used more than once. Not all commands are used.


```
! switch1
track 100 ip route 0.0.0.0/0 reachability

interface ethernet 1/1
ip 209.165.200.226/27

hsrp 200
ip 209.165.200.225
priority 210
[ ]
[ ]
no shutdown

! switch2
track 100 ip route 0.0.0.0/0 reachability

interface ethernet 1/1
ip 209.165.200.227/27

hsrp 200
ip 209.165.200.225
[ ]
[ ]
no shutdown
```

```
preempt delay minimum 30
track 100 decrement 200
track 200 decrement200
preempt sync 30
```

- A. Mastered
B. Not Mastered

Answer: A

Explanation:

```
! switch1
track 100 ip route 0.0.0.0/0 reachability

interface ethernet 1/1
ip 209.165.200.226/27

hsrp 200
ip 209.165.200.225
priority 210
track 100 decrement 200
preempt delay minimum 30
no shutdown

! switch2
track 100 ip route 0.0.0.0/0 reachability

interface ethernet 1/1
ip 209.165.200.227/27

hsrp 200
ip 209.165.200.225
track 100 decrement 200
preempt delay minimum 30
no shutdown
```

```
preempt delay minimum 30
track 100 decrement 200
track 200 decrement200
preempt sync 30
```

NEW QUESTION 275

An engineer must optimize ARP responses and reduce unnecessary ARP broadcasts over the VXLAN/EVPN fabric. Which action accomplishes these tasks?

- A. Configure ip proxy-arp under the VLAN SVI associated with the VXLAN VNI.
B. Configure ip proxy-arp within the VXLAN VNI configuration under the VTEP NVE interface.
C. Configure suppress-arp within the VXLAN VNI configuration under the VTEP NVE interface.
D. Configure suppress-arp under the VLAN SVI associated with the VXLAN VNI.

Answer: C

NEW QUESTION 278

An engineer needs to connect Cisco UCS Fabric Interconnect (FI) to an external storage array. Due to budget limitations, the engineer must connect a Cisco UCS FI directly to an FC storage port. Which two actions must be taken to complete this connection? (Choose two.)

- A. Configure the fabric interconnect in FC switch mode.
B. Set FC zoning to disabled when creating the VSAN
C. Create a storage connection policy.
D. Configure the fabric interconnect in end-host mode,
E. Create the required VSAN in the SAN cloud.

Answer: AE

NEW QUESTION 279

A Cisco UCS user called "Employee1" accidentally changed the boot policy of the Cisco UCS server at the Cisco UCS Manager root level. This change impacted all service profiles, and their storage connectivity was lost. The system administrator wants to prevent this issue from recurring in the future. The new security policy mandates that access must be restricted up to the organization level and prevent other users from modifying root policies. Which action must be taken to meet these requirements?

- A. Modify the privilege level assigned to the user
- B. Assign users to a specific Cisco UCS locale
- C. Assign the user "Employee1" the network-operator role
- D. Define a custom user role and assign it to users

Answer: B

Explanation:

[https://www.cisco.com/c/en/us/td/docs/unified_computing/ucs/ucs-manager/GUI-User-Guides/Admin-Managem User Locales](https://www.cisco.com/c/en/us/td/docs/unified_computing/ucs/ucs-manager/GUI-User-Guides/Admin-Managem%20User%20Locales%20You%20can%20assign%20a%20user%20to%20one%20or%20more%20locales%20Each%20locale%20defines%20one%20or%20more%20organizations%20(domains)%20to%20which%20a%20user%20can%20access%20Access%20is%20usually%20limited%20to%20the%20organizations%20specified%20in%20the%20locale.html) You can assign a user to one or more locales. Each locale defines one or more organizations (domains) to which a user can access. Access is usually limited to the organizations specified in the locale.

https://www.cisco.com/c/en/us/td/docs/unified_computing/ucs/ucs-manager/GUI-User-Guides/Admin-Management/4-1/b_Cisco_UCS_Admin_Mgmt_Guide_4-1/m_rolebased_access_control_configuration.html#d18994e1993a1635

NEW QUESTION 284

What are two types of FC/FCoE oversubscription ratios? (Choose two.)

- A. server storage to end-node count
- B. port bandwidth to uplink bandwidth
- C. edge ISL bandwidth to core ISL bandwidth
- D. host bandwidth to storage bandwidth
- E. switch processing power to end-node processing power

Answer: CD

Explanation:

<https://www.ciscoplive.com/c/dam/r/ciscoplive/us/docs/2017/pdf/BRKDCN-1121.pdf>

https://www.cisco.com/c/en/us/td/docs/switches/datacenter/nexus5000/sw/operations/n5k_fcoe_ops.html

NEW QUESTION 286

An engineer must start a software upgrade on a Cisco Nexus 5000 Series Switch during a zone merge. What is the result of this action?

- A. The zone merge stops.
- B. The zone merge pauses until the upgrade completes
- C. The upgrade stops
- D. The zone merge executes and then the upgrade completes.

Answer: C

Explanation:

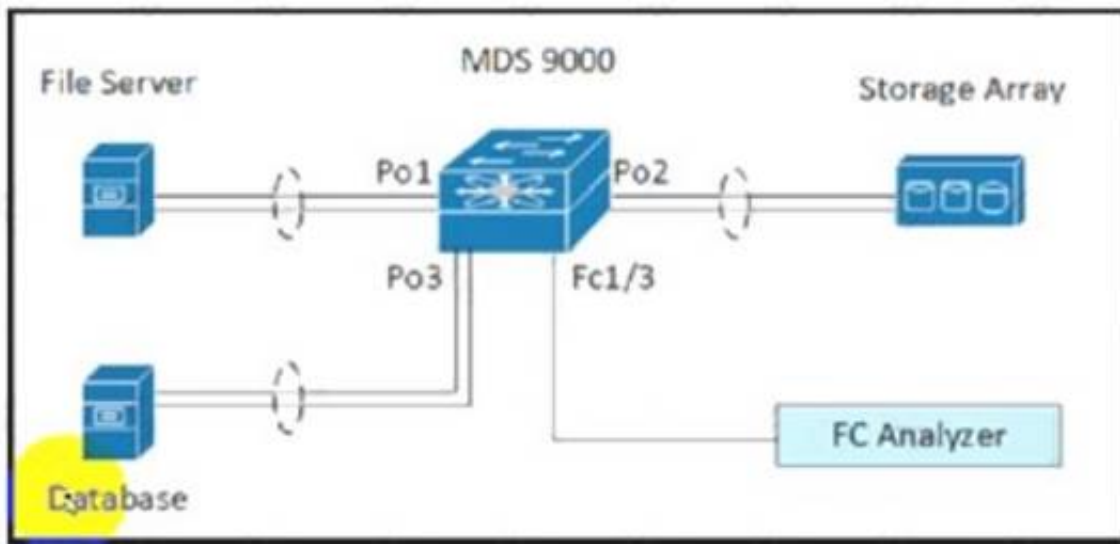
https://www.cisco.com/c/en/us/td/docs/switches/datacenter/nexus5500/sw/upgrade/602_N2_2/n5500_upgrade_d

The specific requirements for a nondisruptive upgrade (ISSU) are as follows:

- Topology requirements— A Cisco Nexus device on which an ISSU is being initiated should not be in one of the unsupported topologies listed in the previous figure. No interface should be in a spanning-tree designated forwarding state. Also, do not configure Bridge Assurance on any interface of the Cisco Nexus device. vPC peer-link is an exception to these requirements.
- Layer 2 requirement— The ISSU process aborts if the system has any Link Aggregation Control Protocol (LACP) fast timers configured.
- FC/FCoE requirements—Check that the topology is stable for an ISSU to work correctly. You must check the following:
 - Domain Manager—As part of the installation process, domain manager checks if the fabric is in a stable state. If the fabric is not stable, the installation aborts.
 - CFS—As part of the installation process, Cisco Fabric Services (CFS) checks if any application (ntp, fsm, rcsn, fctime) is locked. If any application is holding a CFS lock, the installation aborts.
 - Zone Server— The installation process aborts if a zone merge or zone change request is in progress.
 - FSPF—As part of the upgrade process, Fabric Shortest Path First (FSPF) verifies if the configured interface dead interval is more than 80 seconds; otherwise, the installation aborts.

NEW QUESTION 288

Refer to the exhibit.



```

interface port-channel 1
  channel mode active
interface port-channel 2
  channel mode active
interface fcl/1-2
  channel-group 1
  no shutdown
interface fcl/4-5
  channel-group 2
  no shutdown
interface fcl/7-8
  channel-group 3
  no shutdown
vsan database
  vsan 100 name fabric1
  vsan 100 interface port-channel 1
  vsan 100 interface port-channel 2
  vsan 100 interface port-channel 3
  
```

A storage engineer must monitor the traffic from the file server to the FC analyzer. The file server and the database use the same storage array. Which configuration must be applied to the Cisco MDS 9000 Series Switch to accomplish this goal?

- ☐ MDS-9000(config)# span session 1
MDS-9000(config-span)# destination interface fc1/3
MDS-9000(config-span)# source interface port-channel 1
- ☐ MDS-9000(config)# span session 1
MDS-9000(config-span)# destination interface port-channel 2
MDS-9000(config-span)# source interface vsan 100
- ☐ MDS-9000(config)# span session 1
MDS-9000(config-span)# destination interface port-channel 2
MDS-9000(config-span)# source interface fc1/1
- ☐ MDS-9000(config)# span session 1
MDS-9000(config-span)# destination interface vsan 100
MDS-9000(config-span)# source interface port-channel 1

- A. Option A
- B. Option B
- C. Option C
- D. Option D

Answer: B

NEW QUESTION 293

An administrator needs to configure an automated policy to shut down a link when a given threshold is exceeded on MDS switch. Which feature needs to be used?

- A. Scheduler
- B. RMON
- C. EEM
- D. Call Home

Answer: C

Explanation:

https://www.cisco.com/c/en/us/td/docs/switches/datacenter/mds9000/sw/6_2/configuration/guides/interfaces/nx-os/cli_interfaces/intf.html

NEW QUESTION 295

Refer to the exhibit.

```

<?xml version="1.0" encoding="UTF-8"?><imdata totalCount="1"><error
code="403" text="Token was invalid (Error: Token timeout)"/></imdata>
  
```

An engineer configures a new application profile using REST API and receives this error message. Which method can be used before application profile can be configured?

- A. POST to aaaLogin
- B. POST to aaaRefresh
- C. POST to aaaLogout
- D. GET to aaaListDomains

Answer: A

Explanation:

https://www.cisco.com/c/en/us/td/docs/switches/datacenter/aci/apic/sw/2-x/rest_cfg/2_1_x/b_Cisco_APIC_REST_API_Configuration_Guide/b_Cisco_APIC_REST_API_Configuration_Guide_chapter_01.html

Authentication

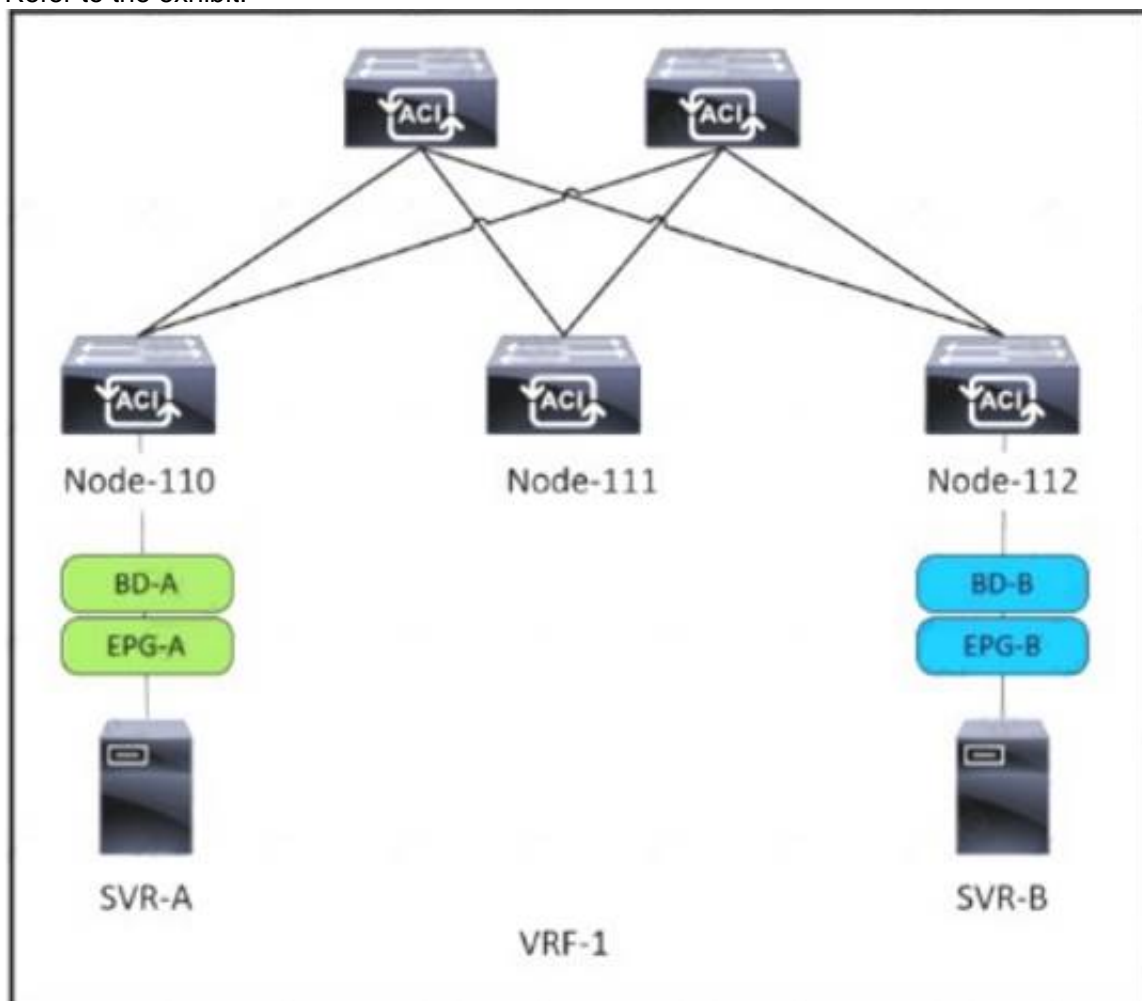
REST API username- and password-based authentication uses a special subset of request Universal Resource Identifiers (URIs), including **aaaLogin**, **aaaLogout**, and **aaaRefresh** as the DN targets of a POST operation. Their payloads contain a simple XML or JSON payload containing the MO representation of an **aaaUser** object with the attribute name and **pwd** defining the username and password: for example, `<aaaUser name='admin' pwd='password'/>`. The response to the POST operation will contain an authentication token as both a Set-Cookie header and an attribute to the **aaaLogin** object in the response named **token**, for which the XPath is `/imdata/aaaLogin/@token` if the encoding is XML. Subsequent operations on the REST API can use this token value as a cookie named **APIC-cookie** to authenticate future requests.

Subscription

The REST API supports the subscription to one or more MOs during your active API session. When any MO is created, changed, or deleted because of a user- or system-initiated action, an event is generated. If the event changes the data on any of the active subscribed queries, the APIC will send out a notification to the API client that created the subscription.

NEW QUESTION 298

Refer to the exhibit.



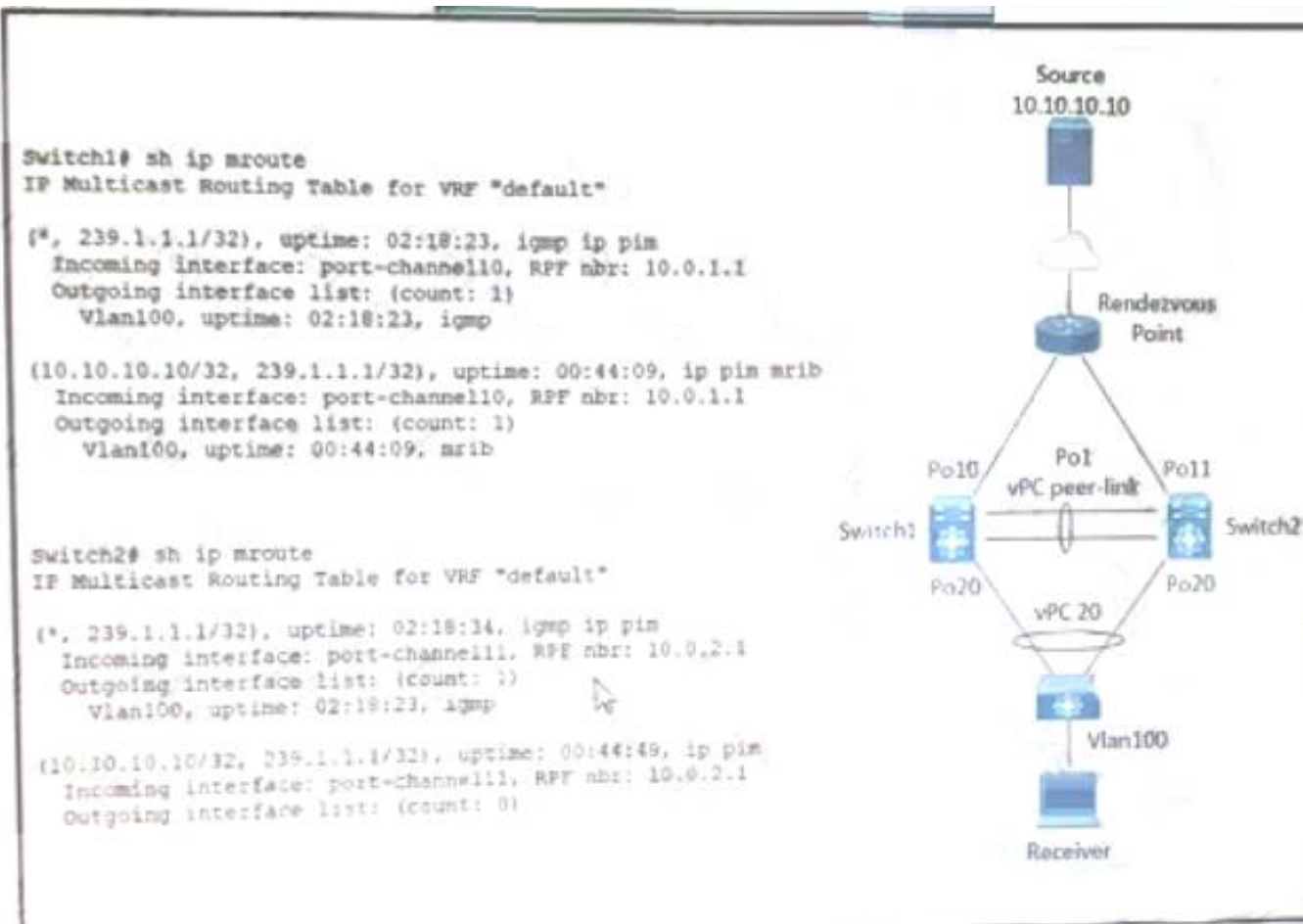
SVR-A in EPG-A/BD-A fails to reach SVR-B in EPG-B/BD-B. Which two conditions should be verified to analyze the traffic between the two EPGs? (Choose two.)

- A. A contract exists between EPG-A and EPG-B and allows the traffic.
- B. Limit Endpoint Learning is disabled on the bridge domain for EPG-B.
- C. SVR-B is learned as an endpoint in EPG-B from Node-112.
- D. EPG-A and EPG-B are excluded from the preferred group.
- E. The bridge domain for EPG-B floods ARP packets.

Answer: AC

NEW QUESTION 299

Refer to the exhibit.



A host with source address 10.10.10.10. sends traffic to multicast group 239.1.1.1. how do the vPC switches forward the multicast traffic?

- A. If multicast traffic is received on Po11 Switch2, the traffic is forwarded out only one Po20.
- B. If multicast traffic is received on Po10 Switch1, the traffic is forwarded out on Po1 and Po20.
- C. If multicast traffic is received on Po11 and Switch2, the traffic is dropped.
- D. If multicast traffic is received on Switch over the vPC peer-link, the traffic is dropped.

Answer: C

Explanation:

<https://www.cisco.com/c/en/us/support/docs/ip/multicast/214140-multicast-forwarding-in-vpc-based-on-loc.htm>

NEW QUESTION 300

An engineer must configure multiple EPGs on a single access port in a large Cisco ACI fabric without using VMM integration. The relevant access policies and tenant policies have been created. A single AAEP is used to configure the access port in the fabric. Which two additional steps must be taken to complete the configuration? (Choose two.)

- A. A contract must be defined between the EPGs
- B. The EPGs must be linked to the correct physical domain
- C. The EPGs must link directly to the corresponding AAEP
- D. The corresponding bridge domains must be configured in legacy mode
- E. The EPGs must be configured as static ports

Answer: BE

Explanation:

Attach EPG to Physical Domain (to AAEP through it) and add static ports to EPG
 Contract is needed to allow communication between two EPGs, or EPG and L3out or between two L3out

NEW QUESTION 305

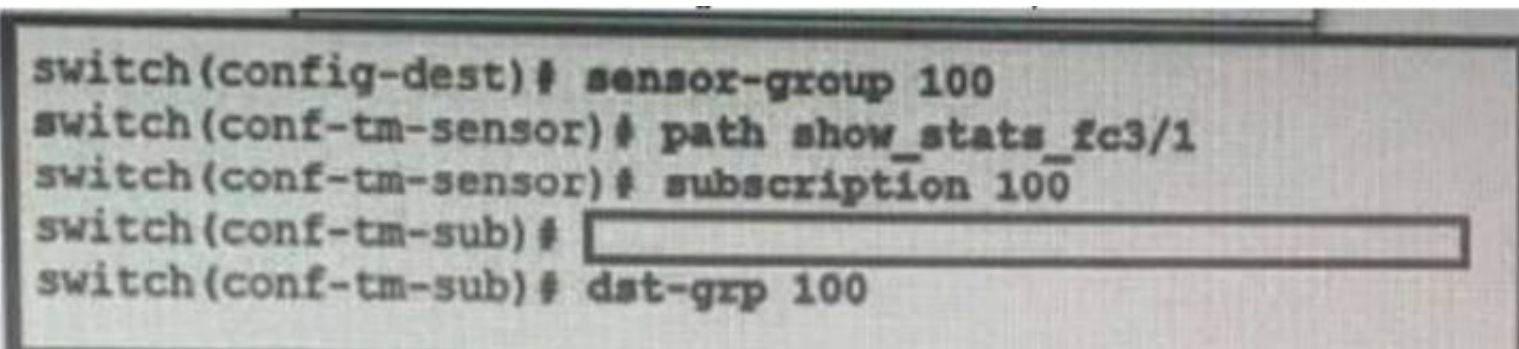
Which MAC address is an HSRP version 2?

- A. 0100.5E7F.FFFF
- B. 3799.9943.3000
- C. 0000.0C9F.F0C8
- D. 0000.0C07.AC1H

Answer: C

NEW QUESTION 309

Refer to the exhibit.



An engineer needs to implement streaming telemetry on a cisco MDS 9000 series switch. The requirement is for the show command data to be collected every 30

seconds and sent to receivers. Which command must be added to the configuration meet this requirement?

- A. Sensor-grp 200 sample-period 30000
- B. Snsr-grp 200 sample-interval 30
- C. Sensor-grp 200 sample-period 30
- D. Snsr-grp 200 sample-interval 30000

Answer: D

Explanation:

snsr-grp <id> sample-interval <interval> Currently, sensor group ID supports only numeric ID values. Specify the streaming sample interval value; the value must be in milliseconds. The minimum streaming sample interval that is supported is 30000 milliseconds.

https://www.cisco.com/c/en/us/td/docs/switches/datacenter/mds9000/sw/8_x/config/san_analytics/cisco-mds900

NEW QUESTION 310

Which data structure results from running this Python code?

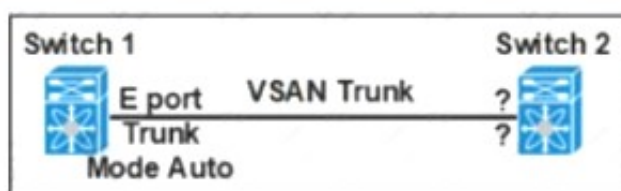
```
>>> import json
>>> f = open('fname.json', 'r')
>>> var1 = json.load(f)
>>> var1
{'bd': 'bd1', 'ap': {'epgs': [{'name': 'app'}, {'name': 'web'}, {'name': 'db'}], 'name': 'OnlineStore', 'id': '39106329', 'pvn': 'pvn1'}}
```

- A. Set
- B. Tuple
- C. Dictionary
- D. List

Answer: A

NEW QUESTION 314

Refer to the exhibit.



Which feature set must be used to configure on switch 2 to establish a VSAN trunk between switch 1 and switch 2?

- ☒ • E Port
• Trunk Mode On
- ☐ • F Port
• Trunk Mode Passive
- ☐ • N Port
• Trunk Mode Active
- ☒ • NP Port
• Trunk Mode Auto

- A. Option A
- B. Option B
- C. Option C
- D. Option D

Answer: A

NEW QUESTION 316

APIC EPG Resolution Immediacy is set to "Immediate" Which statement is true about the Deployment Immediacy for VMM domains associated to EPGs?

- A. The "Immediate" and "On demand" options require a port group to be created on the VDS.
- B. If "On demand" is selected, the policy is programmed in the hardware only when the APIC detects a VM created in the EPG.
- C. If "On demand" is selected the policy is programmed in the hardware only when the first packet is received through the data path.
- D. If "immediate" is selected the policy is programmed in the hardware as soon as the leaf is booted.

Answer: C

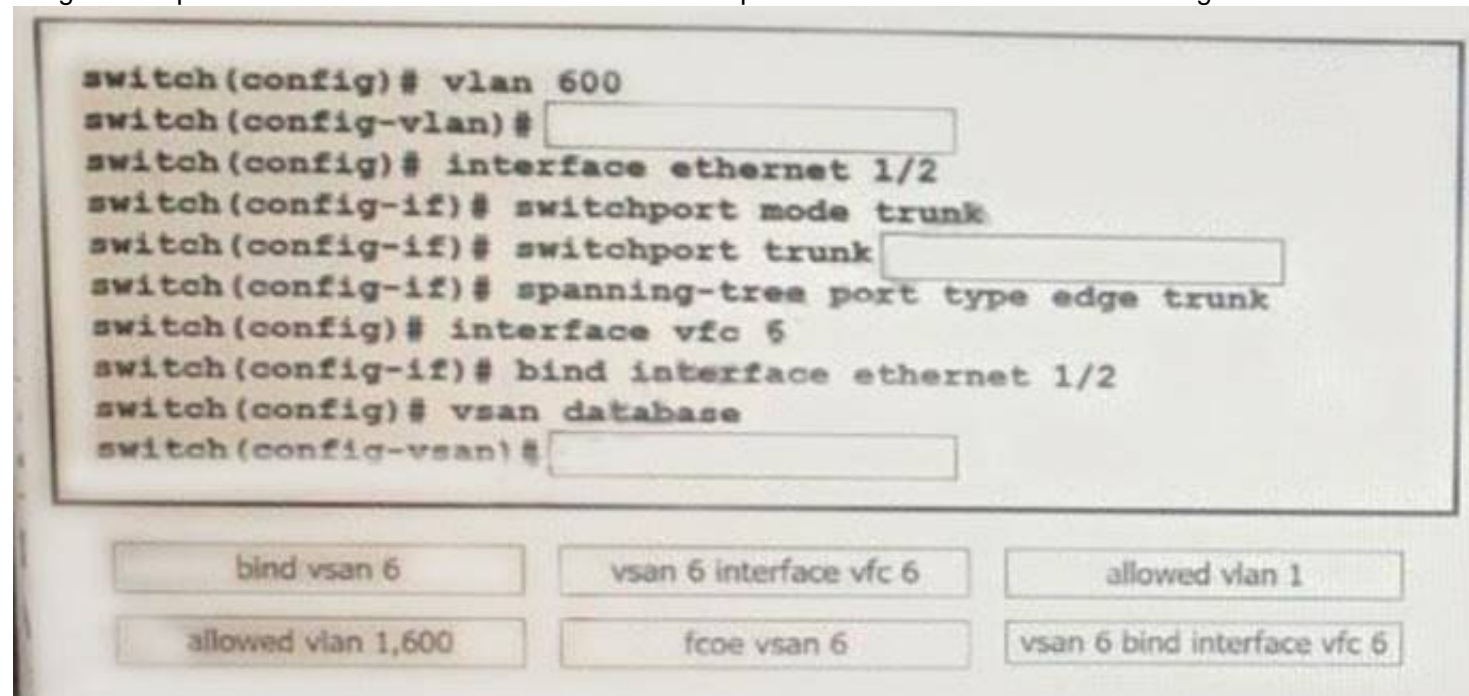
Explanation:

"Deployment Immediacy On demand — Specifies that the policy is programmed in the hardware policy CAM only when the first packet is received through the data path."

https://www.cisco.com/c/en/us/td/docs/switches/datacenter/aci/apic/sw/1-x/aci-fundamentals/b_ACI-Fundament

NEW QUESTION 320

A network engineer must configure FCoE on an interface of a Cisco MDS 9000 Series Switch. It should be used for mapping between VLAN 600 and VSAN 6. Drag and drop the commands from the bottom into their implementation order in the FCoE configuration. Not all commands are used.



- A. Mastered
- B. Not Mastered

Answer: A

Explanation:

Graphical user interface, text Description automatically generated

NEW QUESTION 322

An engineer must recover the Cisco UCS system The full backup is available on a backup SCP server Which set of actions recovers the configuration of the Cisco UCS Manager?

- ☐ Copy the backup file to a USB drive.
Copy the running-config.
- ☐ Create a scheduled restore job.
Reboot the UCS Manager.
- ☒ Create an import-config task.
Set the action to Replace.
- ☐ Factory reset the fabric interconnect.
Select the Restore feature.

- A. Option A
- B. Option B
- C. Option C
- D. Option D

Answer: C

NEW QUESTION 327

An engineer needs to make an XML backup of Cisco UCS Manager The backup should be transferred using an authenticated and encrypted tunnel and it should contain all system and service profiles configuration Which command must be implemented to meet these requirements?

- ☒ create file scp://user@host35/backups/all-config9.bak all-configuration
- ☐ copy startup-config scp://user@host35/backups/all-config9.bak all-configuration
- ☒ create backup scp://user@host35/backups/all-config9.bak all-configuration
- ☐ copy running-config scp://user@host35/backups/all-config9.bak all-configuration

- A. Option A
- B. Option B
- C. Option C
- D. Option D

Answer: C

Explanation:

https://www.cisco.com/en/US/docs/unified_computing/ucs/sw/cli/config/guide/1.4.1/CLI_Config_Guide_1_4_1

The following example creates a disabled all-configuration backup operation for hostname host35 and commits the transaction:

```
UCS-A# scope system
UCS-A /system* # create backup scp://user@host35/backups/all-config9.bak all-configuration disabled
Password:
UCS-A /system* # commit-buffer
UCS-A /system #
```

NEW QUESTION 330

A new user with access privileges in the Finance department moves to a new Admin department. The user must have access privileges to the Admin department data and applications inside the Cisco UCS Manager Which set of changes must be implemented in Cisco UCS Central for the user to acquire the privileges?

- A. Create an Admin user account and remove the authentication service for the Finance privileges.
- B. Disable the Finance user account and add the authentication service for the Admin privileges.
- C. Create a new locale Admin and add the Admin department to the Admin local
- D. Delete the old locale
- E. Finance and remove the Finance department from the Finance locale.

Answer: C

NEW QUESTION 334

An engineer must configure remote authentication on a Cisco UCS system. The user password must be encrypted before it is sent to the authentication server. The company security policy requires the server to be based on an open standard. Drag and drop the UCS CLI AAA configuration commands from the left into the order in which they must be implemented on the right. Not all commands are used.

commit-buffer	step 1
create server <ip address>	step 2
set key	step 3
scope radius	step 4
scope tacacs+	step 5
scope security	

- A. Mastered
- B. Not Mastered

Answer: A

Explanation:

```
UCS-A# scope security
UCS-A /security # scope radius
UCS-A /security/radius # create server radiusserv7
UCS-A /security/radius/server* # set key
UCS-A /security/radius/server* # commit-buffer
```

NEW QUESTION 339

Which two settings must be configured before enabling a Cisco UCS Manager domain for Cisco Intersight connectivity? (Choose two.)

- A. syslog redirection
- B. DNS servers
- C. SMTP servers
- D. NTP servers
- E. SMTP reply-to-address

Answer: BD

Explanation:

https://www.cisco.com/c/en/us/td/docs/unified_computing/ucs/ucs-manager/GUI-User-Guides/Admin-Management/4-1/b_Cisco_UCS_Admin_Mgmt_Guide_4-1/m_gui_cisco_intersight_management.html

NEW QUESTION 342

An engineer must configure OSPF routing on Cisco Nexus 9000 Series Switches. The IP subnet of the Eth 1/2 interface for both switches must be advertised via OSPF. However, these interfaces must not establish OSPF adjacency or send routing updates. The current OSPF adjacency over the interface Eth1/1 on SW1 and Eth1/1 on SW2 must remain unaffected. Which configuration must be applied to both Nexus switches to meet these requirements?

- A. interface ethernet 1/2passive-interface default
- B. Interface ethernet 1/2lp ospf network point-to-point
- C. interface ethernet 1/2ip ospf passive-interface
- D. interface ethernet 1/2no ip ospf passive-Interface

Answer: C

NEW QUESTION 343

Host 1 is in VLAN 100 located is DataCenter 1 and Host2 is in VLAN200 located in DataCenter2. Which OTV VLAN mapping configuration allows Layer 2 connectivity between these two hosts?

A. DC1:
interface Overlay1
otv extend-vlan 100
otv vlan mapping 100 to 200

DC2:
interface Overlay1
otv extend-vlan 100
otv vlan mapping 100 to 200

B. DC1:
interface Overlay1
otv extend-vlan 100
otv vlan mapping 100 to 200

DC2:
interface Overlay1
otv extend-vlan 200

C. DC1:
interface Overlay1
otv extend-vlan 100

DC2:
interface Overlay2
otv extend-vlan 200

D. DC1:
interface Overlay1
otv extend-vlan 100

DC2:
interface Overlay1
otv extend-vlan 200

- A. Option A
- B. Option B
- C. Option C
- D. Option D

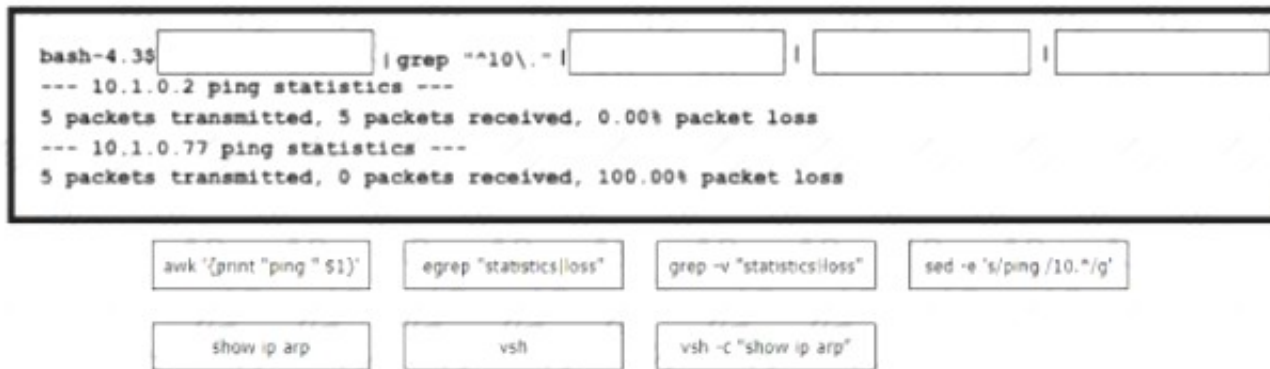
Answer: B

Explanation:

<https://www.cisco.com/c/en/us/support/docs/switches/nexus-7000-series-switches/200998-Nexus-7000-OTV-V>
<https://www.cisco.com/c/en/us/support/docs/switches/nexus-7000-series-switches/200998-Nexus-7000-OTV-V>

NEW QUESTION 344

A network administrator must automate the process of pinging all the IP addresses from the 10.0.0.0/8 subnet. The subnet is already present in the ARP table of the Cisco Nexus switch. Drag and drop the bash commands to generate the desired output. Not all commands are used.



- A. Mastered
- B. Not Mastered

Answer: A

Explanation:

vsh -c "show ip arp", awk'{print "ping" \$1}', vsh, egrep "statistics|loss"

NEW QUESTION 346

A network architect wants to propose a scalable network monitoring solution in which data is repeatedly acquired from network devices. The solution must use a push model and provide close to realtime access to operational data. Which technology must be used to meet these requirements?

- A. streaming telemetry
- B. logging
- C. SNMPv3
- D. CLI-based scripting

Answer: A

Explanation:

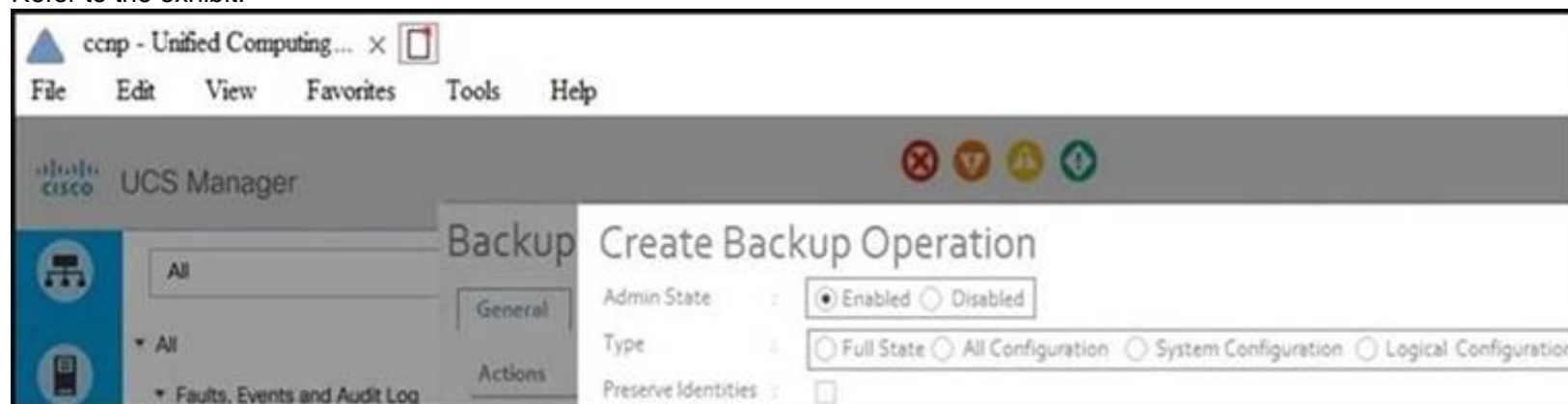
<https://blogs.cisco.com/developer/its-time-to-move-away-from-snmp-and-cli-and-use-model-driven-telemetry>

Why Model-Driven Telemetry?

Model-Driven Telemetry is a new approach for network monitoring in which data is streamed from network devices continuously using a push model and provides near real-time access to operational statistics. You can precisely define what data you want to subscribe to using standard YANG models (YANG is a data modeling language used to model configuration and state data manipulated by the NETCONF protocol) with no CLI required. It allows network devices to continuously stream real time configuration and operating state information to subscribers. Structured data is published at a defined cadence, or on-change, based upon the subscription criteria and data type.

NEW QUESTION 351

Refer to the exhibit.



Which backup operation type does not include the Preserve Identities feature?

- A. logical configuration
- B. system configuration
- C. full state
- D. all configuration

Answer: C

Explanation:

This checkbox remains selected for All Configuration and System Configuration. Full State backup does not have Preserver Identity feature.

All configs, logical and system backups seem to allow "preserve identities":

<https://books.google.pt/books?id=5VXUDwAAQBAJ&pg=PT699&lpg=PT699&dq=Preserve+Identities+feature+backup+ucs&source=bl&ots=daWxti4DV&sig=ACfU3U3X8UIPtS8EewzRIqTxqpyNVqOaNQ&hl=es419&sa=X&ved=2ahUKEwiYhtaxyMDqAhXFzIUkHXI8CzoQ6AEwC3oECAoQAQ#v=onepage&q=Preserve%20Identities%20feature%20backup%20ucs&f=false>

NEW QUESTION 355

Which two configuration settings are available in the in the cisco UCS flmware Auto sync server policy?

- A. User Notification
- B. User Acknowledge
- C. No Action
- D. Delayed Action
- E. Immediate Action

Answer: BC

Explanation:

https://www.cisco.com/c/en/us/td/docs/unified_computing/ucs/sw/firmware-mgmt/gui/2-2/b_GUI_Firmware_M Following are the values for the Firmware Auto Sync Server policy: • User Acknowledge—Firmware on the server is not synchronized until the administrator acknowledges the upgrade in the Pending Activities dialog box. • No Action—No firmware upgrade is initiated on the server.

NEW QUESTION 358

A storage engineer must configure zoning on a Cisco MDS 9000 Series switch. Drag and drop actions from the left into the order on right

zone name Zone1 vsan 4	Step 1
member pwwn 10:00:00:23:45:67:89:ac	Step 2
zoneset activate name Zoneset1 vsan 4	Step 3
member Zone1	Step 4
copy running-config startup-config	Step 5
zoneset name Zoneset1 vsan 4	Step 6

- A. Mastered
- B. Not Mastered

Answer: A

Explanation:

Graphical user interface, table Description automatically generated with medium confidence

```
Switch1# configure terminal
Enter configuration commands, one per line. End with CNTL/Z.
```

```
Switch1#(config)# vsan database
Switch1#(config-vsan-db)# vsan 100
Switch1#(config-vsan-db)# exit
```

```
Switch1#(config)# zone name zone1 vsan 100
Switch1#(config-zone)# member pwnn 11:11:11:11:11:11:11:1a
Switch1#(config-zone)# member pwnn 11:11:11:11:11:11:11:1b
Switch1#(config-zone)# exit
```

```
Switch1#(config)# zoneset name setA vsan 100
Switch1#(config-zoneset)# member zone1
Switch1#(config-zoneset)# exit
```

```
Switch1#(config)# zoneset activate name setA vsan 100
Zoneset activation initiated. check zone status
Switch1#(config)# exit
```

```
Switch1# sh zoneset active vsan 100
zoneset name setA vsan 100
zone name zone1 vsan 100
pwnn 11:11:11:11:11:11:11:1a
pwnn 11:11:11:11:11:11:11:1b
Switch1#
```

https://www.cisco.com/c/en/us/td/docs/switches/datacenter/mds9000/sw/6_2/configuration/guides/fabric/nx-os/nx_os_fabric/zone.html

NEW QUESTION 363

A host EPG Client wants to talk to a webserver in EPG Web. A contract with default settings is defined between EPG Client and EPG Web, which allows TCP communication initiated by the client toward the webserver with TCP destination port 80. Which statement is true?

- A. If EPG Web is made a preferred group member, a contract between EPG Client and EPG Web is no longer required for the host in EPG Client to reach the webserver in EPG Web.
- B. If vzAny is configured to consume and provide a "deny all" contract, traffic between EPG Client and EPG Web is no longer allowed.
- C. The host in EPG Client is allowed to connect to TCP destination port 80 on the webserver in EPG Web. The webserver will not be allowed to initiate a separate TCP connection to a host port with TCP source port 80.
- D. The host in EPG Client is allowed to connect to TCP destination port 80 on the webserver in EPG Web. The webserver is allowed to initiate a separate TCP connection to a host port with TCP source port 80.

Answer: D

Explanation:

Apply Both Direction and Reverse Filter Port in the subject for the filter. These two options are by default enabled...This means that if the provider EPG initiates traffic toward the consumer EPG, the Cisco ACI fabric allows it for any destination ports if the source port is 80.

https://www.cisco.com/c/en/us/td/docs/switches/datacenter/aci/apic/sw/1-x/Operating_ACI/guide/

[b_Cisco_Operating_ACI/b_Cisco_Operating_ACI_chapter_01000.html](#) Reverse filter and apply in both directions is default.

If a filter allows traffic from any consumer port to a provider port (e.g. 8888), if reverse port filtering is enabled and the contract is applied both directions (say for TCP traffic), either the consumer or the provider can initiate communication. The provider could open up a TCP socket to the consumer using port 8888, whether the provider or consumer sent traffic first. https://www.cisco.com/c/en/us/td/docs/switches/datacenter/aci/apic/sw/1-x/Operating_ACI/guide/

[b_Cisco_Operating_ACI/b_Cisco_Operating_ACI_chapter_01000.html](#)

NEW QUESTION 365

Refer to the exhibit. A network engineer must configure an authentication solution for Cisco UCS with these conditions:

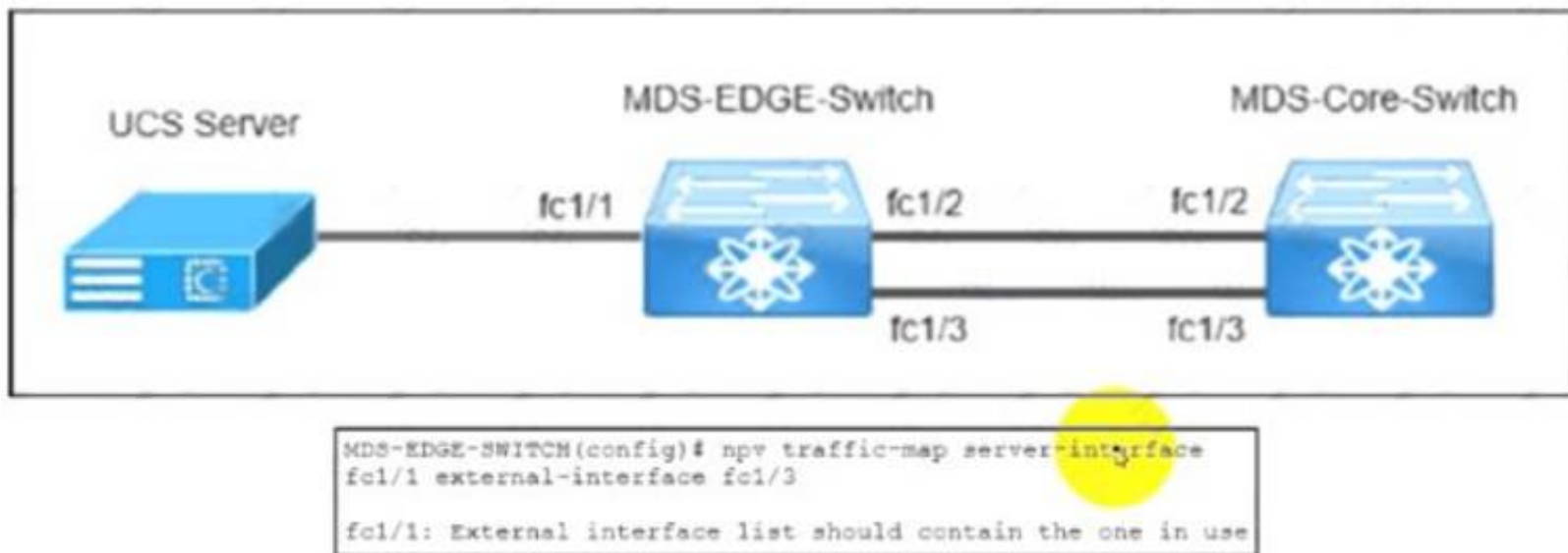
- Two-factor authentication must be enabled for all UCS user authentication.
- All AAA packets must be encrypted and use TCP port 49 to establish communication. Which set of actions needs these requirements?

- A. Create the LDAP provider. Change the LDAP group rule in an LDAP provider.
- B. Create the RADIUS group mapping. Change the RADIUS group rule in a RADIUS provider.
- C. Remove the LDAP provider. Create a TACACS+ provider in user management.
- D. Delete the LDAP group mapping. Create a RADIUS provider in user management.

Answer: C

NEW QUESTION 366

Refer to the exhibit.



The MDS-EDGE-Switch and MDS-Core-Switch are configured with NPV and NPIV features. The FLOGI from Cisco UCS is received by the MDS-Core-Switch on interface fc1/2. An engineer tried to move all traffic between the MDS-EDGE-Switch and MDS-Core-Switch from interface fc 1/2 to fc1/3, but the attempt failed. Which set of actions completes the configuration?

- ☐ Disable the NPV feature in the MDS-EDGE-Switch.
Re-enable the NPV feature.
Disable interface fc1/1.
- ☐ Disable the NPIV feature in the MDS-EDGE-Switch.
Re-enable the NPIV feature.
Disable interface fc1/3.
- ☐ Shut down fc1/1 in the MDS-EDGE-Switch.
Re-apply the command.
Enable interface fc1/1.
- ☐ Shutdown fc1/3 in the MDS-EDGE-Switch.
Re-apply the command.
Enable interface fc1/3.

- A. Option A
- B. Option B
- C. Option C
- D. Option D

Answer: C

NEW QUESTION 367

A network engineer must download a firmware image from a remote location to a Cisco UCS Fabric Interconnect. The software bundle is over 232 MB in size. The file transfer must use encryption and authentication. Which protocol must be used to accomplish this goal?

- A. RDP
- B. HTTPS
- C. SCP
- D. TFTP

Answer: C

NEW QUESTION 369

An engineer must perform an initial configuration of VXLAN Tunnel End-Point functionality on the Cisco Nexus 9000 Series platform. All the necessary features are already enabled on the switch. Which configuration set must be used to accomplish this goal?

- ☐ NX9K(config)# interface loopback0
NX9K(config-if)# ip address 10.10.10.11/32
- NX9K(config)# interface overlay0
NX9K(config-if-overlay)# source-interface loopback0
- NX9K(config)# interface VLAN10
NX9K(config-if-nve)# source-interface loopback0
- ☐ NX9K(config)# interface loopback0
NX9K(config-if)# ip address 10.10.10.11/32
- NX9K(config)# interface tunnel1
NX9K(config-if)# tunnel source loopback0
- NX9K(config)# interface ethernet1/1
NX9K(config-if)# ip unnumbered loopback0
- ☐ NX9K(config)# interface loopback0
NX9K(config-if)# ip address 10.10.10.11/32
- NX9K(config)# interface nve1
NX9K(config-if-nve)# source-interface loopback0
- NX9K(config)# interface ethernet1/1
NX9K(config-if)# ip unnumbered loopback0
- ☐ NX9K(config)# interface loopback0
NX9K(config-if)# ip address 10.10.10.11/32
- NX9K(config)# interface VLAN10
NX9K(config-if)# ip unnumbered loopback0
- NX9K(config)# interface nve1
NX9K(config-if-nve)# source-interface loopback0

- A. Option A
B. Option B
C. Option C
D. Option D

Answer: D

NEW QUESTION 372

Which behavior defines streaming telemetry as a push model in Cisco devices?

- A. Monitoring clients are pulling data from the network to see real-time statistics
B. JSON encoded telemetry data is transported using the gRPC protocol
C. The network devices send data in JSON or GPB format to configured endpoints
D. Events and network changes generate telemetry data

Answer: D

Explanation:

<https://developer.cisco.com/docs/ios-xe/#!streaming-telemetry-quick-start-guide/streaming-telemetry>

NEW QUESTION 377

Which communication method does NFS use for requests between servers and clients?

- A. XDR
B. SSC
C. PRC
D. SMB

Answer: C

Explanation:

<https://www-uxsup.csx.cam.ac.uk/pub/doc/redhat/WS2.1/rhl-rg-en-7.2/ch-nfs.html>

NEW QUESTION 380

A network architect must redesign a data center on OSPFv2. The network must perform fast reconvergence between directly connected switches. Which two actions must be taken to meet the requirement? (Choose two)

- A. Configure all links on AREA 0.
B. Implement a virtual link between the switches.
C. Use OSPF point-to-point links only.
D. Set low OSPF hello and DEAD timers.
E. Enable BFD for failure detection.

Answer: CD

NEW QUESTION 385

A Cisco Nexus 7000 Series switch runs VXLAN, and interface Ethernet 7/30 is configured as a trunk port. Which command set configures the switch to act as a gateway for VLAN 50?

```
interface Ethernet7/30 no switchport
no shutdown
service instance 1 vni no shutdown
```

- A. encapsulation profile VSI_50_TO_500 default
- B. encapsulation profile vni VSI_50_TO_500 dot1q 500 vni 50bridge-domain 500member vni 50 interface Vlan500ip address 10.50.50.51/24
- C. encapsulation profile vni VSI_50_TO_500 dot1q 500 vni 50bridge-domain 500member vni 50 interface Bdi500jp address 10.50.50.51/24
- D. encapsulation profile vni VSI_50_TO_500 dot1q 50 vni 500bridge-domain 50member vni 500 interface Bdi50ip address 10.50.50.51/24
- E. encapsulation profile vni VSI_50_TO_500 dot1q 50 vni 500bridge-domain 50member vni 500 interface Vlan50ip address 10.50.50.51/24

Answer: C

NEW QUESTION 386

Refer to the exhibit.

```
event manager applet local-backup
event cli match "copy running-config startup-config"
action 1 cli copy  bootflash:/
current config.txt
action 2 syslog msg Configuration saved and copied to
bootflash
action 3 event-default
```

A network engineer must create an EEM script that saves a copy of the running configuration to bootflash and writes a message to syslog when a user saves the configuration to a Cisco Nexus 9000 Series Switch. Which command completes the configuration set?

- A. running-config
- B. policy-default
- C. syslog-config
- D. event-default

Answer: A

NEW QUESTION 387

Refer to the exhibit.

```
show incompatibility-all system bootflash:n7000-s1-dk9.4.2.4.bin
```

Software downgrade is required on a Cisco Nexus 7000 Series Switch. What is displayed when this command is executed?

- A. features and commands that are removed automatically from the configuration
- B. features that are enabled automatically after the downgrade
- C. compatibility of software in the system bootflash file
- D. impact of a software upgrade in ISSU and chassis reload

Answer: A

NEW QUESTION 391

Which two statements about the process of upgrading an EPLD on a Cisco MDS 9000 series Switch are correct? (Choose two.)

- A. The EPLDs for all the modules on a switch must be upgraded at the same time.
- B. EPLD upgrades can be completed without powering down the module during the upgrade.
- C. EPLDs can be upgraded only to the latest EPLD image.
- D. EPLDs can be upgraded without replacing the hardware.
- E. An upgrade verification identifies the impact of each EPLD upgrade.

Answer: DE

Explanation:

https://www.cisco.com/c/en/us/td/docs/switches/datacenter/mds9000/sw/7_3/upgrade/upgrade.html

NEW QUESTION 396

A network engineer is asked to describe the cloud infrastructure models from the perspective of their operation and access to resources. Drag and drop the descriptions from the left onto the appropriate.

Provisioned for open use.	Private cloud
At least two or more separate cloud infrastructures are connected together to facilitate hosted data and application portability.	Community cloud
Owned, managed, and operated by one or more organizations or teams.	Public cloud
Owned, managed, and operated by a single organization.	Hybrid cloud

- A. Mastered
B. Not Mastered

Answer: A

Explanation:

Private Cloud: owned, managed, and operated by a single organization.

Community Cloud: Owned, managed, and operated by one or more organizations or teams. Public Cloud: Provisioned for open use.

Hybrid Cloud: At least two or more separate cloud infrastructures are connected together to facilitate hosted data and application portability.

NEW QUESTION 401

Refer to the exhibit.

```
Start time: Mon Apr 15 09:23:01 2019
Last election time: Mon Apr 15 09:24:24 2019
A: UP, PRIMARY
B: UP, SUBORDINATE
A: memb state UP, lead state PRIMARY, mgmt services state: UP
B: memb state UP, lead state SUBORDINATE, mgmt services state: UP
heartbeat state PRIMARY_OK
INTERNAL NETWORK INTERFACES:
eth1, UP
eth2, UP
HA NOT READY
No device connected to this Fabric Interconnect
```

What be connected to clear the HA NOT READY status?

- A. server chassis
B. network uplinks
C. management ports
D. Layer 1-Layer 2 ports

Answer: A

NEW QUESTION 406

An engineer is asked to use SaaS to manage Cisco computing. Which two items are needed to accomplish the task? (Choose two.)

- A. UCS Manager
B. Node name/Serial Number
C. Device/Claim ID
D. UCS Central
E. Intersight

Answer: AE

Explanation:

<https://www.cisco.com/c/en/us/products/collateral/cloud-systems-management/intersight/intersight-ds.html>

NEW QUESTION 410

Refer to the exhibit.


```

1.130599 192.168.254.1 -> 192.168.254.13 TCP 60 29652 > ssh [ACK] Seq=1 Ack=53
Win=32449 Len=0
1.136261 00:8e:73:a2:41:0e -> Spanning-tree-(for-bridges)_00 STP 60 Conf. Root =
8192/10/ec:e1:a9:df:6c:80 Cost = 22 Port = 0x800e
1.373417 192.168.254.13 -> 192.168.254.1 SSH 106 Encrypted response packet len=52
1.570377 192.168.254.1 -> 192.168.254.13 TCP 60 29652 > ssh [ACK] Seq=1 Ack=105
Win=32786 Len=0
1.815558 192.168.254.13 -> 192.168.254.1 SSH 106 Encrypted response packet len=52
2.021840 192.168.254.1 -> 192.168.254.13 TCP 60 29652 > ssh [ACK] Seq=1 Ack=157
Win=32773 Len=0
2.525173 192.168.254.13 -> 192.168.254.1 SSH 106 Encrypted response packet len=52
2.731382 192.168.254.1 -> 192.168.254.13 TCP 60 29652 > ssh [ACK] Seq=1 Ack=209
Win=32760 Len=0
2.947365 192.168.254.13 -> 192.168.254.1 NTP 90 NTP Version 2, client
2.947623 192.168.254.1 -> 192.168.254.13 NTP 90 NTP Version 2, server
3.138157 00:8e:73:a2:41:0e -> Spanning-tree-(for-bridges)_00 STP 60 Conf. Root =
8192/10/ec:e1:a9:df:6c:80 Cost = 22 Port = 0x800e
3.139400 192.168.254.13 -> 192.168.254.1 SSH 106 Encrypted response packet len=52
3.270728 192.168.254.4 -> 239.255.70.83 UDP 166 Source port: cfs Destination port:
cfs
3.341123 192.168.254.1 -> 192.168.254.13 TCP 60 29652 > ssh [ACK] Seq=1 Ack=261
Win=32747 Len=0
3.835409 192.168.254.13 -> 192.168.254.1 SSH 106 Encrypted response packet len=52
4.041411 192.168.254.1 -> 192.168.254.13 TCP 60 29652 > ssh [ACK] Seq=1 Ack=313
Win=32734 Len=0
4.535284 192.168.254.13 -> 192.168.254.1 SSH 106 Encrypted response packet len=52
4.741072 192.168.254.1 -> 192.168.254.13 TCP 60 29652 > ssh [ACK] Seq=1 Ack=365
Win=32721 Len=0
4.947308 192.168.254.13 -> 192.168.254.1 NTP 90 NTP Version 2, client
4.947519 192.168.254.1 -> 192.168.254.13 NTP 90 NTP Version 2, server
5.139627 00:8e:73:a2:41:0e -> Spanning-tree-(for-bridges)_00 STP 60 Conf. Root =
8192/10/ec:e1:a9:df:6c:80 Cost = 22 Port = 0x800e
5.140867 192.168.254.13 -> 192.168.254.1 SSH 106 Encrypted response packet len=52

```

Cisco Fabric Services is enabled in the network. Which type of IP address is used by the Cisco Fabric Services protocol?

- A. IPv4 unicast address
- B. IPv4 multicast address
- C. IPv4 gateway address
- D. IPv4 anycast address

Answer: B

NEW QUESTION 414

An engineer is automating a Cisco Nexus 9000 Series Switch using the NX-OS API. Which code snippet creates a local user called "tacuser" with an expiration date of 22 November?

A)

☐ POST http://10.91.12.14/api/mo/sys/userext.json

```

{
  "aaaUserEp": {
    "children": [
      {
        "aaaUser": {
          "attributes": {
            "allowExpired": "no",
            "expiration": "2021-11-22T00:00:00.000+00:00",
            "expires": "yes",
            "name": "tacuser",
            "pwd": "AKw47PS3:g4M410:Fs01",
            "pwdEncryptType": "clear"
          }
        }
      }
    ]
  }
}

```

B)

○ GET http://10.12.14.91/api/mo/sys/userext/user-tacuser.json

```
{
  {
    "aaaUserEp": {
      "attributes": {
        "childAction": "add",
        "dn": "sys/userext",
        "lcOwn": "local",
        "modTs": "2021-11-22T00:00:00.000+00:00",
        "pwdSecureMode": "yes",
        "pwdStrengthCheck": "no",
        "status": "",
        "uid": "0"
      }
    }
  }
}
```

C)

○ HEAD http://10.14.91.12/api/policymgr/mo/uni/userext.json

```
{
  "aaaUser": {
    "name": "tacuser",
    "phone": "",
    "pwd": "H97NW894SDASgQL",
    "expire": "yes",
    "aaaUserDomain": {
      "description": "",
      "name": "all",
      "rn": "userdomain-all"
    }
  }
}
```

○ PUT http://10.91.14.12/api/policymgr/mo/uni/

```
{
  "aaaUser": {
    "email": "tacuser@cisco.com",
    "name": "tacuser",
    "createdAt": "2020-09-11T00:00:00.090210Z",
    "authorizations": {
      "authorizedZone": "VDC1",
      "expiresAt": "2021-11-22T00:00:00.000+00:00",
      "authorizedByName": "OPS",
      "authorizedByEmail": "ops@company.com"
    }
  }
}
```

- A. Option A
- B. Option B
- C. Option C

Answer: A

NEW QUESTION 419

What is the benefit of adding Cisco HyperFlex Hardware Acceleration Cards to a HyperFlex deployment?

- A. offline encryption acceleration
- B. increased network throughput
- C. GPU acceleration
- D. Increased compression efficiency

Answer: D

Explanation:

- Additional Information on HyperFlex Hardware Acceleration Cards

Overview of HyperFlex Hardware Acceleration Cards

This chapter provides details for installation, post-installation, and troubleshooting of HyperFlex Hardware Acceleration Cards (PID: HX-PCIE-OFFLOAD-1) on HyperFlex nodes and for configuring your initial cluster. **These cards provide improved performance and compression efficiency for most storage workloads.**



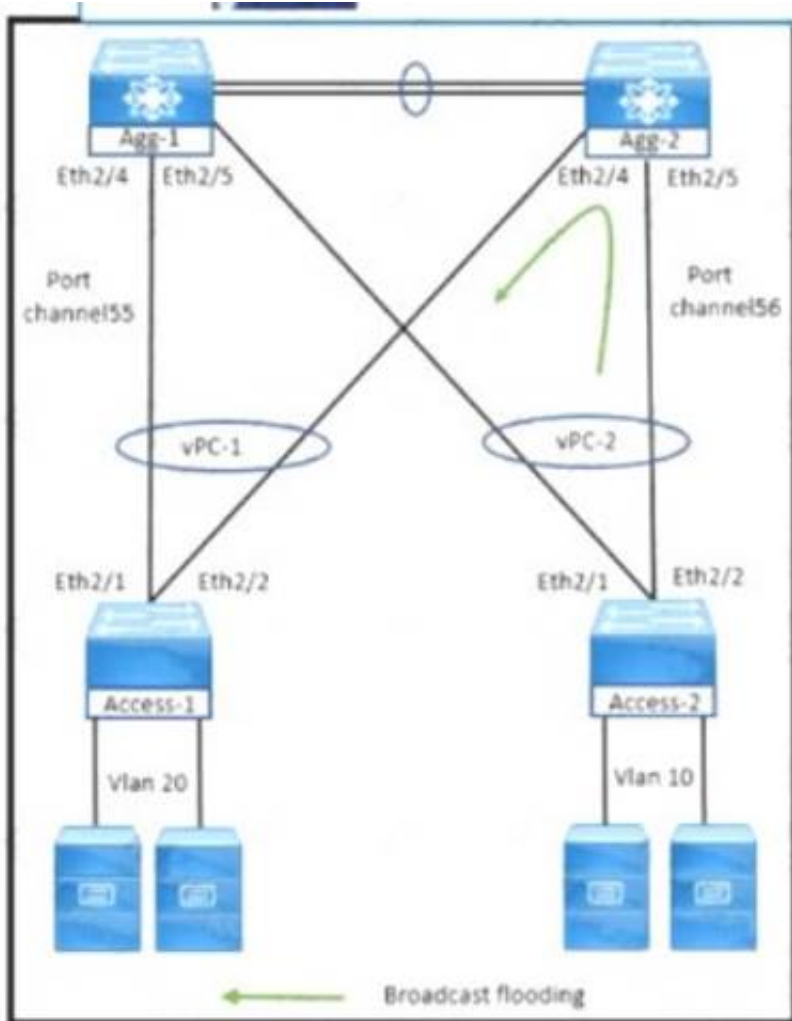
Note

An HXDP-P Enterprise license is required for installing and configuring HyperFlex Hardware Acceleration Cards.

https://www.cisco.com/c/en/us/td/docs/hyperconverged_systems/HyperFlex_HX_DataPlatformSoftware/Installation_VMware_ESXi/3_5/b_HyperFlexSystems_Installation_Guide_for_VMware_ESXi_3_5/b_HyperFlexSystems_Installation_Guide_for_VMware_ESXi_3_5_chapter_01100.html#:~:text=Overview%20of%20HyperFlex%20Hardware%20Acceleration%20Cards,-This%20chapter%20provides&text=These%20cards%20provide%20improved%20performance%20and%20compression%20efficiency%20for%20most%20storage%20workloads.

NEW QUESTION 423

Refer to the exhibit.



What happens to the broadcast traffic when it reaches aggregation switches?

- A. Only Agg-1 switch receives broadcast packets and does not forward to the peer link on Agg-2 switch.
- B. Agg-1 switch prevents broadcast packets received on the vPC peer link from exiting the switch on ports Eth2M and Eth2/5
- C. Agg-2 switch receives broadcast packets and stops forwarding to the peer link on Agg-1 switch.
- D. Agg1 and Agg2 switches receive broadcast packets and does not forward them to me peer link or the port channel

Answer: D

NEW QUESTION 425

A customer asks an engineer to develop a framework that will be used to replace the process of the manual device configuration of Cisco NX-OS devices. The engineer plans to use the programmatic interface that meets these requirements:

- > The development team is familiar with Windows-based scripting environment using PowerShell.
- > The customer's security requirements mandate the use of HTTPS transport.

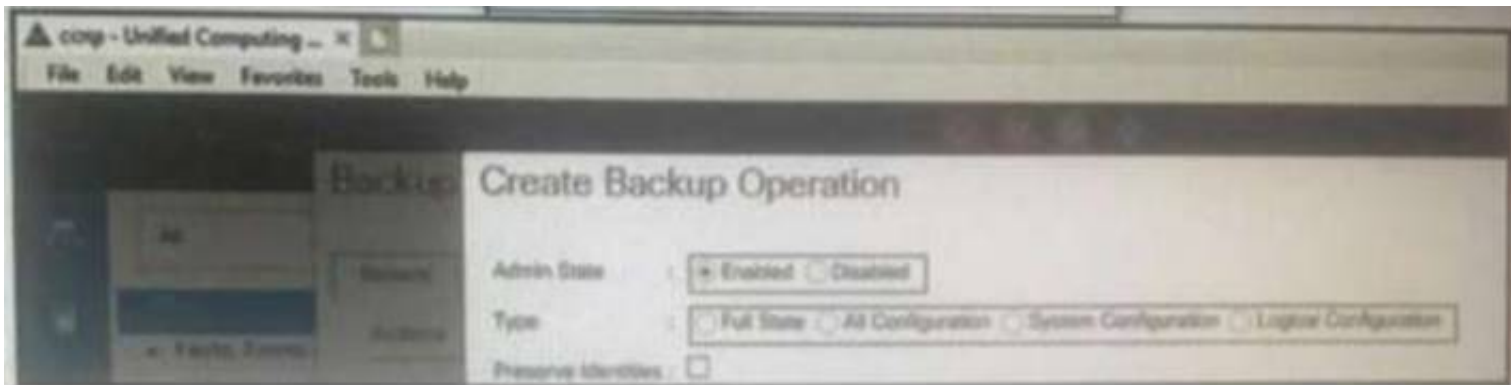
Which solution must be used to meet these requirements?

- A. NX-API
- B. VISORE
- C. Open Agent Container
- D. NETCONF-YANG

Answer: A

NEW QUESTION 430

Refer to the exhibit.



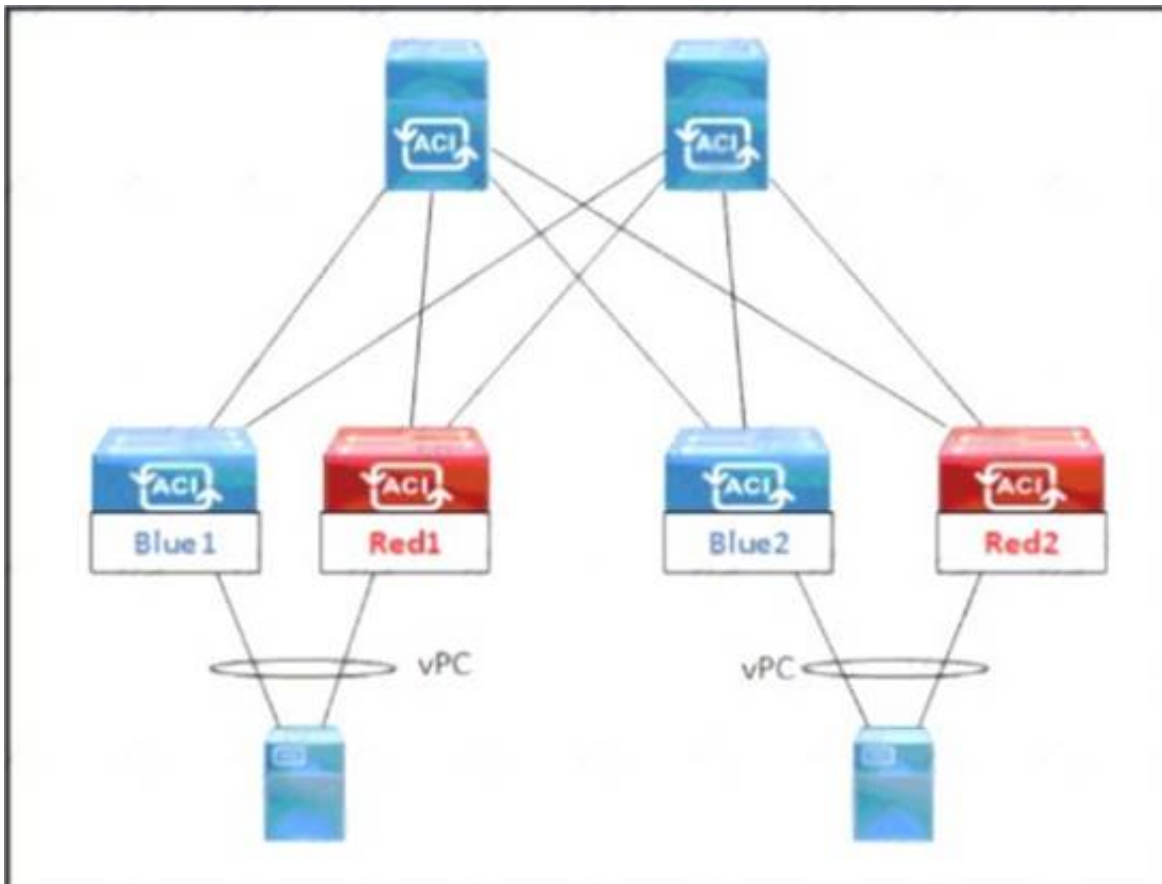
Which backup operation type not include the preserve identities feature?

- A. Full state
- B. Logical configuration
- C. System configuration
- D. All configuration

Answer: A

NEW QUESTION 435

Refer to the exhibit.



An engineer must schedule the firmware upgrade of the Red1 and Red2 leaf switches. The requirement is to keep the upgrade time to the minimum, avoid any service impact, and perform the parallel upgrade Which set of scheduler attributes must be used to meet these requirements?

- ☐ • Configure SchedulerPolicy1 for all four leaf switches Blue1, Blue2, Red1, and Red2.
• Configure SchedulerPolicy1 and SchedulerPolicy2 with a one-time window trigger that has maximum concurrent nodes 1.
- ☐ • Configure SchedulerPolicy1 for leaf switches Blue1 and Red1, and SchedulerPolicy2 for leaf switches Blue2 and Red2.
• Configure SchedulerPolicy1 and SchedulerPolicy2 with a one-time window trigger that has maximum concurrent nodes 2.
- ☐ • Configure SchedulerPolicy1 for all four leaf switches Blue1, Blue2, Red1, and Red2.
• Configure SchedulerPolicy1 and SchedulerPolicy2 with a one-time window trigger that has maximum concurrent nodes 2.
- ☐ • Configure SchedulerPolicy1 for leaf switches Blue1 and Red1, and SchedulerPolicy2 for leaf switches Blue2 and Red2.
• Configure SchedulerPolicy1 and SchedulerPolicy2 with a one-time window trigger that has maximum concurrent nodes 1.

- A. Option A
- B. Option B
- C. Option C
- D. Option D

Answer: D

NEW QUESTION 437

An engineer performs a Cisco UCS C480 ML M5 installation from a Cisco UCS Manager As a part of the design the server must perform an iSCSI boot from the storage array Which configuration must be performed in the SAN settings in the root organization to satisfy that condition?

- A. Implement a WWPN pool
- B. Create a virtual iSCSI vNIC
- C. Enable a host SAN pool
- D. Create an IQN suffix pool

Answer: D

NEW QUESTION 439

An engineer is configuring a backup operation on the existing Cisco UCS environment using a logical configuration. Which configuration is expected to be saved by using this backup type?

- A. systems
- B. roles
- C. service profiles
- D. servers

Answer: C

Explanation:

Graphical user interface, text, application, email Description automatically generated

- [Import Operations](#)
- [Restoring the Configuration for a Fabric Interconnect](#)

Backup and Export Configuration

When you perform a backup through Cisco UCS Manager, you take a snapshot of all or part of the system configuration and export the file to a location on your network. You cannot use Cisco UCS Manager to back up data on the servers.

You can perform a backup while the system is up and running. The backup operation only saves information from the management plane. It does not have any impact on the server or network traffic.

Backup Types

You can perform one or more of the following types of backups through Cisco UCS Manager:

- Full state—A binary file that includes a snapshot of the entire system. You can use the file generated from this backup to restore the system during disaster recovery. This file can restore or rebuild the configuration on the original fabric interconnect, or recreate the configuration on a different fabric interconnect. You cannot use this file for an import.
- All configuration—An XML file that includes all system and logical configuration settings. You can use the file generated from this backup to import these configuration settings to the original fabric interconnect or to a different fabric interconnect. You cannot use this file for a system restore.
- System configuration—An XML file that includes all system configuration settings such as usernames, roles, and locales. You can use the file generated from this backup to import these configuration settings to the original fabric interconnect or to a different fabric interconnect. You cannot use this file for a system restore.
- Logical configuration—An XML file that includes all logical configuration settings such as service profiles, VLANs, VSANs, pools, and policies. You can use the file generated from this backup to import these configuration settings to the original fabric interconnect or to a different fabric interconnect. You cannot use this file for a system restore.

Considerations and Recommendations for Backup Operations

https://www.cisco.com/en/US/docs/unified_computing/ucs/sw/gui/config/guide/141/UCSM_GUI_Configuration_Guide_141_chapter43.html

NEW QUESTION 444

A network engineer must determine the cooling requirements for a Cisco UCS C-Series Rack Server. The server with PCIe cards is configured with a fan configuration policy. Which configuration should be used for the fan policy of the server?

- ☒ **server # scope chassis**
server /chassis # scope fan-policy
server /chassis/fan-policy # set fan-policy high-power
server /chassis/fan-policy* # commit
- ☐ **server # scope chassis**
server /chassis # scope fan-policy
server /chassis/fan-policy # set fan-policy balanced
server /chassis/fan-policy* # commit
- ☐ **server # scope server**
server /server # scope fan-policy
server /server /fan-policy # set fan-policy acoustic
server /server /fan-policy* # commit
- ☐ **server # scope server**
server /server # scope fan-policy
server /server /fan-policy # set fan-policy low-power
server /server /fan-policy* # commit

- A. Option A
- B. Option B
- C. Option C
- D. Option D

Answer: A

NEW QUESTION 446

A network engineer must configure a Fibre Channel interface on the Cisco MDS 9000 Series Switch The configuration must meet these requirements

- The interface must be disabled when the bit errors threshold is exceeded
- Buffer-to-buffer credits must be set to the maximum value
- The interface must have full bandwidth allocated for its port group

Which command set configures a Fibre Channel interface that meets these requirements?

- A.

```
interface fc1/1
switchport bit-errors
switchport fcrxbbcredit 220 mode Fx
switchport rate-mode dedicated
```
- B.

```
interface fc1/1
switchport ignore bit-errors
switchport fcrxbbcredit 255 mode Fx
no switchport rate-mode
```
- C.

```
interface fc1/1
no switchport ignore bit-errors
switchport fcrxbbcredit 255 mode Fx
switchport rate-mode dedicated
```
- D.

```
interface fc1/1
no switchport bit-errors
switchport fcrxbbcredit 220 mode Fx
no switchport rate-mode
```

Answer: A

NEW QUESTION 448

Drag and drop the characteristics from the left onto the NAS protocols on the right. Some characteristics are used more than once

used to boot VHDX files

used to boot VMDK files

uses lease-based model for file locking

used to provide shared storage for hypervisors

NFS

SMB/CIFS

- A. Mastered
- B. Not Mastered

Answer: A

Explanation:

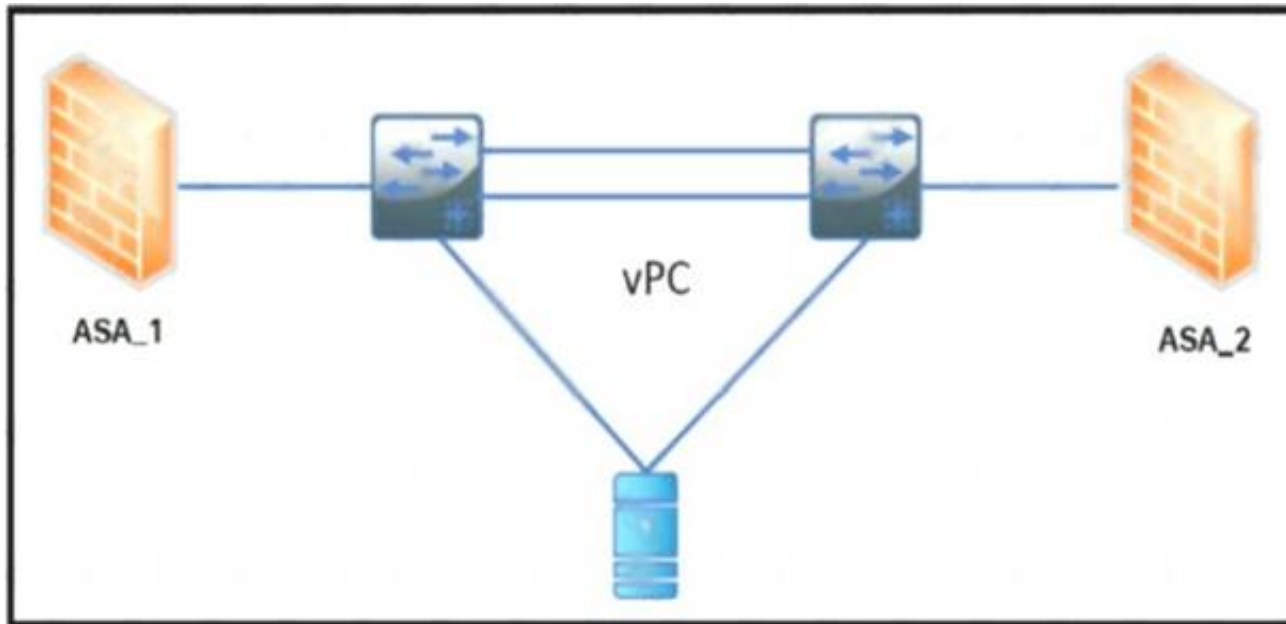
Diagram Description automatically generated

NFS:

- Used to boot VMDK files
 - Uses lease-based model for file locking
 - Used to provide shared storage for hypervisors
- SMB/CIFS:
- Used to boot VHDX files
 - Used to provide shared storage for hypervisors

NEW QUESTION 453

Refer to the exhibit



The ASA 1 acts as a Layer 3 gateway for all servers. The servers lose the gateway connectivity when the vPC peer links go down and the vPC keepalive remains up. Which action improves the high availability in the network?

- A. Create a static port channel with two links from each firewall to the switch
- B. Activate the vPC orphan-port suspend feature on the switch ports connected to the firewall
- C. Implement the IP reoVect feature on the vPC devices
- D. Enable the vPC peer gateway feature on the vPC devices

Answer: D

NEW QUESTION 458

Refer to the exhibit.

```
NEXUS# configure terminal
NEXUS# locator-led fex 100
NEXUS(config)# feature fex
NEXUS(config)# fex 100
NEXUS(config-fex)# type N2232TM
NEXUS(config-fex)# serial JAF1427BQLG
NEXUS(config)# interface ethernet 1/24-32
NEXUS(config-if)# switchport
NEXUS(config-if)# switchport mode fex-fabric
NEXUS(config-if)# fex associate 100
NEXUS(config-if)# no shutdown

NEXUS # show fex 100 detail
FEX: 100 Description: FEX0100 state: Online
  FEX version: 5.0(2)N1(1) [Switch version: 5.0(2)N1(1)]
  FEX Interim version: 5.0(2)N1(0.205)
  Switch Interim version: 5.0(2)N1(0.205)
  Extender Model: N2K-C2232TM, Extender Serial: JAF1427BQLG
  Part No: 73-13373-01
  Card Id: 132, Mac Addr: 68:ef:bd:62:2a:42, Num Macs: 64
  Module Sw Gen: 21 [Switch Sw Gen: 21]
  post level: complete
  pinning-mode: static   Max-links: 1
  Fabric port for control traffic: Eth1/29
  Fabric interface state:
    Eth1/25 - Interface Up. State: Active
    Eth1/26 - Interface Up. State: Active
    Eth1/27 - Interface Up. State: Active
    Eth1/28 - Interface Up. State: Active
    Eth1/29 - Interface Up. State: Active
    Eth1/30 - Interface Up. State: Active
    Eth1/31 - Interface Up. State: Active
    Eth1/32 - Interface Up. State: Active
```

An engineer must distribute all the host ports to use all eight configured FEX uplinks. The solution must minimize disruption if an uplink fails Which action accomplishes this objective?

- A. Set the pinning max-links value to 8
- B. Statically assign each host interface to a fabric uplink
- C. Change the supported FEX type
- D. Configure the eight uplinks in a port channel

Answer: D

Explanation:

Traffic disruption should be minimised when an uplink fails. If pinning was used and an uplink failed, then traffic associated with the failed link would be disrupted until it could be re-routed. Using a port-channel is much less disruptive.

NEW QUESTION 459

An administrator is implementing DCNM so that events are triggered when monitored traffic exceeds the configured present utilization threshold. The requirement is to configuration a maximum limit of 39860437 bytes that applies directly to the statistics collected as a ratio of the total link capacity. Which DCNM performance monitoring configuration parameter must be implemented to achieve this result?

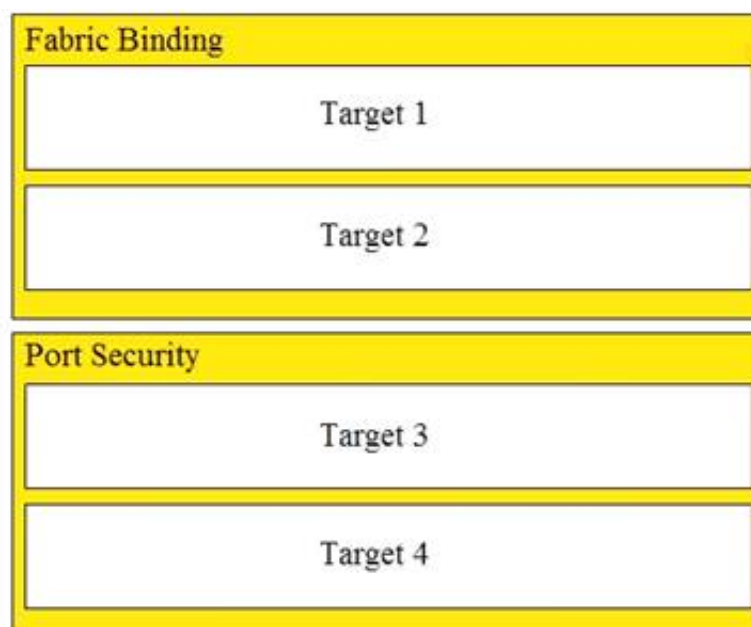
- A. Absolution Values
- B. Baseline
- C. Utill%
- D. Per port Monitoring

Answer: A

NEW QUESTION 463

An engineer is implementing security on the Cisco MDS 9000 switch. Drag drop the descriptions from the left onto the correct security features on the right.

- can be distributed via fabric services
- uses the Exchange Fabric Membership Data protocol
- allows a preconfigured set of Fibre Channel devices to logically connect to SAN ports
- prevent unauthorized switches from joining the fabric or disrupting current fabric operations

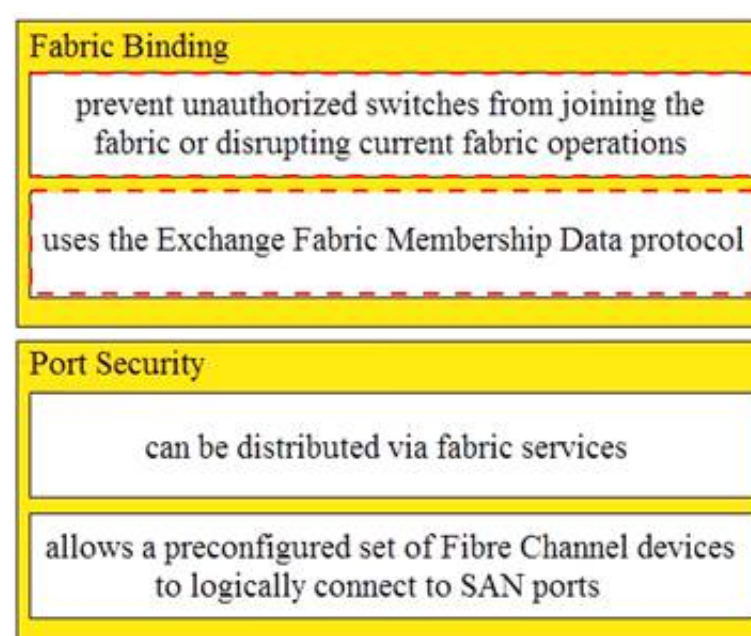


- A. Mastered
- B. Not Mastered

Answer: A

Explanation:

- can be distributed via fabric services
- uses the Exchange Fabric Membership Data protocol
- allows a preconfigured set of Fibre Channel devices to logically connect to SAN ports
- prevent unauthorized switches from joining the fabric or disrupting current fabric operations



NEW QUESTION 466

Refer to the exhibit.

```
import time
import cli

date= time.strftime('%Y%m%d')
file= ('fusion-config_') + date
cli.execute ('copy running-config ftp://10.183.249.182/fusionSW/' + file)
exit()
```

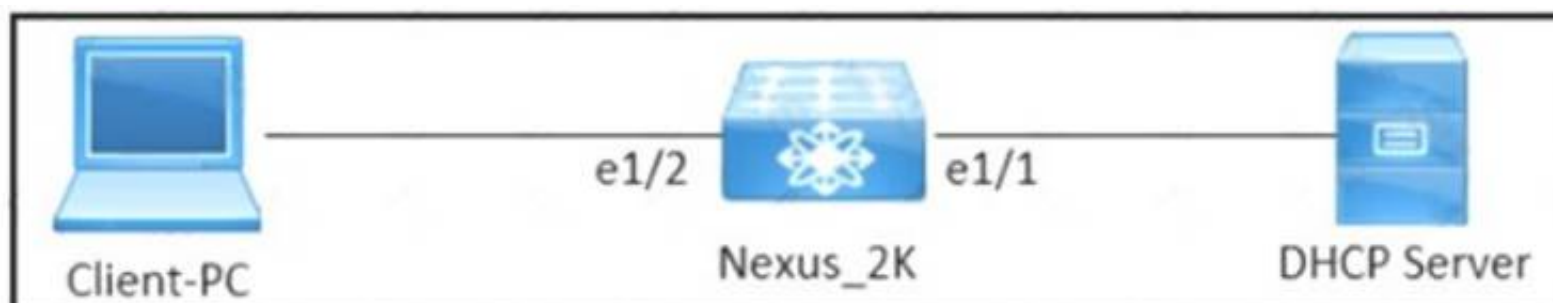
What is the result of executing this python code?

- A. It backs up Cisco switches to Cisco Prime infrastructure.
- B. It sends the switch configuration to Cisco TAC.
- C. It sends a Cisco device backup to a remote destination.
- D. It schedules a backup on a Cisco switch using EEM.

Answer: C

NEW QUESTION 469

Refer to the exhibit.



[illegible]

An engineer is troubleshooting intermittent connectivity issues between the client PC and the DHCP server. What does the last package captured from the Cisco Nexus 2000 Series Switch indicate?

- A. The DHCP server releases the IP address from the client.
B. The client receives an IP address from the DHCP server.
C. The DHCP server sends an IP address via a broadcast message.
D. The client sends a unicast message to receive an IP address from the DHCP server.

Answer: A

NEW QUESTION 471

What is a characteristic of the NFS protocol?

- A. It is used for booting Cisco UCS B-Series servers.
- B. It is used to access a storage array at a block level.
- C. It uses UDP and HTTP as its transport.
- D. It uses remote procedure calls with TCP/IP for transport.

Answer: D

NEW QUESTION 473

An engineer must configure HTTPS secure management for Cisco UCS Manager using a key ring named kr2016 and a key size of 1024 bits. The environment consists of a primary fabric interconnect named UCS-A and a secondary fabric interconnect named UCS-B. Which command sequence must be used to accomplish this goal?

- ① UCS-B# scope security
UCS-B /security # keyring kr2016
UCS-B /security/keyring* # set mod mod1024
UCS-A /security/keyring* # commit-buffer
- ② UCS-A# scope security
UCS-A /security # create keyring kr2016
UCS-A /security/keyring* # set modulus mod1024
UCS-A /security/keyring* # commit-buffer
- ③ UCS-B# scope security
UCS-B /security # create keyring kr2016
UCS-B /security/keyring* # set size mod1024
UCS-A /security/keyring* # commit-buffer
- ④ UCS-A# scope security
UCS-A /security # keyring name kr2016
UCS-A /security/keyring* # set size 1024
UCS-A /security/keyring* # commit-buffer

- A. Option A
B. Option B
C. Option C
D. Option D

Answer: B

Explanation:

https://www.cisco.com/en/US/docs/unified_computing/ucs/sw/cli/config/guide/1.4.1/CLI_Config_Guide_1_4_1

```
UCS-A# scope security
UCS-A /security # create keyring kr220
UCS-A /security/keyring* # set modulus mod1024
UCS-A /security/keyring* # commit-buffer
UCS-A /security/keyring #
```

NEW QUESTION 476

An engineer must implement a new VRF that permits communication between all endpoint groups (EPGs) by default. The new EPGs and bridge domains (BDs) that are created in the new VRF must not require additional configuration to permit traffic between the newly created EPGs or BDs. Which action accomplishes this goal?

- A. Provide and consume a permit any contract on the VRF level
- B. Create a VRF in the common tenant.
- C. Place all EPGs in the preferred group.
- D. Implement a global contract.

Answer: C

NEW QUESTION 479

A SAN administrator must Implement Infrastructure monitoring for the Fibre Channel storage environment. The storage environment consists of a standalone Cisco Nexus 9000 Series Switch and Cisco MDS 9000 Series Switches. The goal is to be able to visualize the SAN support VXLAN overlays and identify storage slow drain issues. Which monitoring solution accomplishes this task?

- A. Cisco Prime Infrastructure
- B. Cisco DCNM
- C. Cisco APIC
- D. Cisco Intersight

Answer: B

NEW QUESTION 482

An engineer must perform a POAP deployment of a Cisco Nexus 9000 Series Switch The switch must automatically receive its software image and configuration file upon power-on. Also, only UDP is permitted between the Nexus 9000 switch and the server that hosts the Cisco NX-OS system images Which set of actions completes the configuration?

- A. Enable option 67. Define TFTP transfer protocol
- B. Enable option 43 Define HTTP transfer protocol.
- C. Enable option 46. Define TFTP transfer protocol
- D. Enable option 35. Define HTTP transfer protocol.

Answer: A

NEW QUESTION 485

An engineer must configure a control plane policy on a Cisco Nexus 9000 Series Switch that is located at IP 192.168.20.1 that moots those requirements

- Only HTTP, RDP, and ICMP traffic is permitted from subnet 192.168.10.0/24.
- The committed information rate must be 54000 pps.
- The burst size must be 128 packets.
- Any other traffic must be dropped.

Drag and drop the code snippets from the bottom onto the blanks in the code on the top to complete the configuration. Not all code snippets are used

```
ip access-list permithosts
  permit tcp 192.168.10.0/24 
  permit tcp 192.168.10.0/24 host 192.168.20.1 eq 3389
  permit icmp 192.168.10.0/24 host 192.168.20.1

class-map type control-plane match-any hostsmap
  match 

policy-map type control-plane hostsmap
  police cir 54000 pps bc 128 packets
```

host 192.168.20.1 eq 443

class hostsmap

conform transmit violate drop

access-group name permithosts

class permithosts

conform transmit violate drop

- A. Mastered
- B. Not Mastered

Answer: A

Explanation:

Text Description automatically generated

NEW QUESTION 486

A UCS B- Series server located in B5108 chassis 1 slot 1 is currently unavailable. The server needs to be associated with a specific service profile when it becomes available. Which associate service profile option should be selected to accomplish this goal?

- A. server pool
- B. server
- C. custom server
- D. restrict migration

Answer: C

Explanation:

https://www.cisco.com/en/US/docs/unified_computing/ucs/sw/gui/config/guide/141/UCSM_GUI_Configuration_Guide_141_chapter28.html

Text, application Description automatically generated with medium confidence

Associating a Service Profile with a Server or Server Pool

Follow this procedure if you did not associate the service profile with a blade server or server pool when you created it, or to change the blade server or server pool with which a service profile is associated.

Procedure

- Step 1** In the Navigation pane, click the Servers tab.
- Step 2** On the Servers tab, expand Servers > Service Profiles.
- Step 3** Expand the node for the organization that contains the service profile that you want to associate with a new server or server pool.
- If the system does not include multi-tenancy, expand the root node.

Step 4 Right-click the service profile you want to associate with a server and select Change Service Profile Association.

Step 5 In the Associate Service Profile dialog box, select one of the following options:

Option	Description
Server Pool	Select a server pool from the drop-down list. Cisco UCS Manager assigns a server from this pool to the service profile. Continue with Step 7.
Server	Navigate to the desired available server in the navigation tree and select the server which will be assigned to the service profile. Continue with Step 7.
Custom Server	Specifies the chassis and slot that contains the server that will be assigned to the service profile. If the server is not in the slot or is otherwise unavailable, the service profile will be associated with the server when it becomes available. Continue with Step 6.

- Step 6** If you chose Custom Server, do the following:
- a. In the Chassis Id field, enter the number of the chassis where the selected server is located.
 - b. In the Server Id field, enter the number of the slot where the selected server is located.

NEW QUESTION 490

Refer to the exhibit.

```
ACI-Leaf1# show ip route vrf DATACENTER:DC

10.20.1.0/24, ubest/mbest: 1/0, attached, direct, pervasive

    *via 10.0.8.65%overlay-1, [1/0], 4w3d, static

172.16.100.0/24, ubest/mbest: 1/0

    *via 10.1.168.95%overlay-1, [200/5], 3w0d, bgp-132, internal, tag 132 (mpls-vpn)

172.16.99.0/24, ubest/mbest: 1/0

    *via 10.0.1.14, [20/0], 3w0d, bgp-132, external, tag 200
```

Which two statements describe the routing table of the leaf switch? (Choose two.)

- A. The next hop 10.0.8.65 for route 10.20.1.0/24 is the TEP address of a border leaf in ACI.
- B. The next hop 10.0.1.14 for route 172.16.99.0/24 is the TEP address of a border leaf in ACI.
- C. The next hop 10.1.168.95 for route 172.16.100.0/24 is the TEP address of a border leaf in ACI.
- D. 172.16.100.0/24 is a BD subnet in ACI.
- E. 10.20.1.0/24 is a BD subnet in ACI.

Answer: CE

NEW QUESTION 493

Which storage protocol reduces file locks by using leasing?

- A. CIFS
- B. NFS 4
- C. NFS 3
- D. SMB

Answer: D

Explanation:

<https://www.ciscolive.com/c/dam/r/ciscolive/apjc/docs/2016/pdf/BRKCOM-1211.pdf>

- **SMB Directory Leasing**
 - Ability to cache file and directory metadata
 - Branch offices need to make less round trips to the central server

NEW QUESTION 494

An engineer must implement a solution that prevents untrusted DHCP servers from compromising the network. The feature must be configured on a Cisco Nexus 7000 Series Switch and applied to VLAN 10. The legitimate DHCP servers are connected to interface Ethernet 2/4. Which configuration set must be used to meet these requirements?

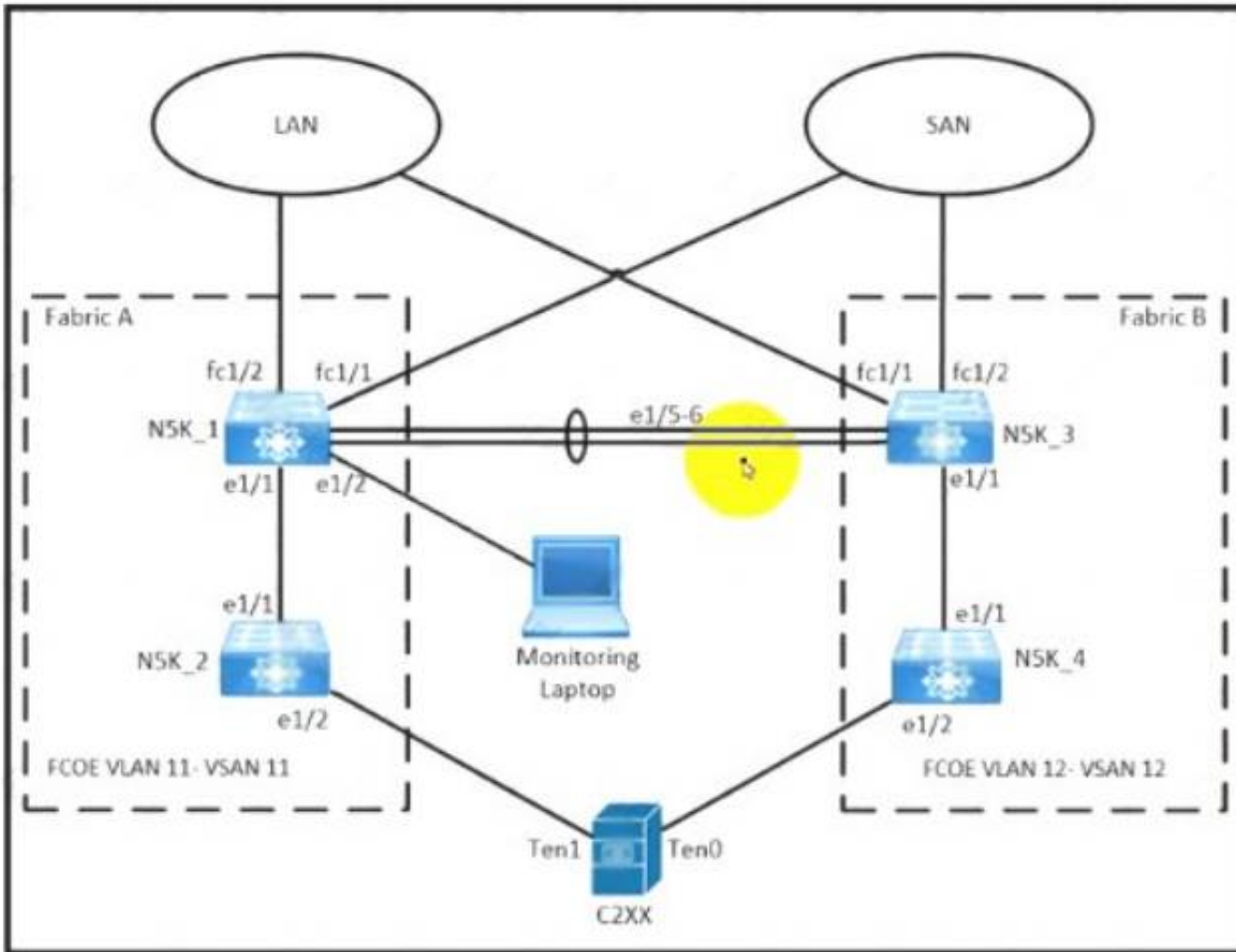
- ☐ n7k-1(config)# ip dhcp snooping vlan 10
n7k-1(config)# interface Ethernet2/4
n7k-1(config-if)# ip dhcp snooping trust
- ☒ n7k-1(config)# ip dhcp snooping vlan 10
n7k-1(config)# interface Ethernet2/4
n7k-1(config-if)# ip dhcp snooping verify vlan 10
- ☐ n7k-1(config)# ip dhcp snooping verify
n7k-1(config)# interface Ethernet2/4
n7k-1(config-if)# ip dhcp snooping verify vlan 10
- ☐ n7k-1(config)# ip dhcp snooping verify
n7k-1(config)# vlan configuration 10
n7k-1(config-vlan)# ip dhcp snooping trust

- A. Option A
- B. Option B
- C. Option C
- D. Option D

Answer: A

NEW QUESTION 498

Refer to the exhibit.



LAN / Traffic Monitoring Sessions / Fabric A / Monitor Session VSAN11-Session

General Faults Events

Actions

Clear Destination

Delete

Properties

Name: VSAN11-Session

Admin State: ☒ Enabled ☐ Disabled

Destination:

Admin Speed: ☐ 1 Gbps ☒ 10 Gbps ☐ 40 Gbps

Operational State: Unknown

Operational State Reason: Unknown

Configuration Success: Yes

Configuration Failure Reason:

Sources

☒ Uplink Ethernet Ports

An engineer is creating a SPAN session to send a copy of all the Fabric-A VSAN 11 traffic on NSK_1 to the monitoring laptop. The configurator that is presented has already been applied to Cisco UCS Manager. Which action completes the configuration?

- A. Activate a NetFlow monitoring session
- B. Create a SAN traffic monitoring session
- C. Set VLAN 11 as the traffic destination
- D. Select VSAN 11 as the source of traffic.

Answer: C

NEW QUESTION 500

An engineer must configure an LACP port channel on two Cisco Nexus 7000 Series Switches. The interface e1/2 must be a hot-standby link that initiates negotiation with other ports. Drag and drop the commands from the right onto the blanks in the configuration on the left. Not all commands are used.

```

configure terminal
feature 
interface Ethernet 1/2
switchport
channel-group 2 
interface Ethernet 1/3
switchport
channel-group 2 mode active
lacp port 

```

mode active

lacp

priority 1

mode passive

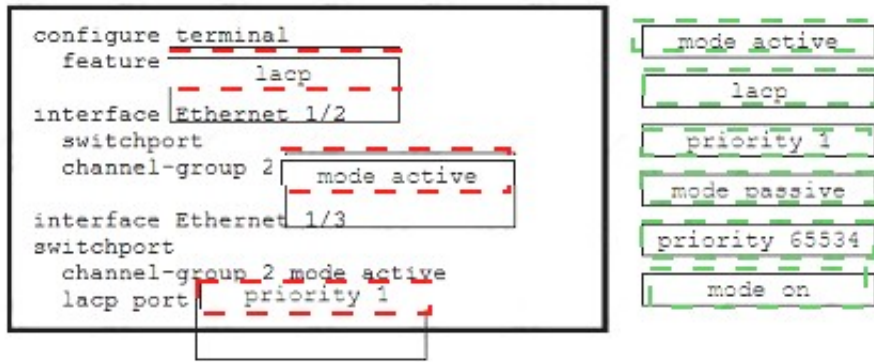
priority 65534

mode on

- A. Mastered
- B. Not Mastered

Answer: A

Explanation:



NEW QUESTION 501

Which action must be performed before renumbering a Cisco UCS chassis?

- A. Move the chassis to new ports on fabric interconnect.
- B. Re-acknowledge the chassis.
- C. Decommission the chassis.
- D. Run the shut and no shut command on the connected ports.

Answer: C

NEW QUESTION 506

An engineer must configure Cisco Nexus 9000 Series Switches for Cisco UCS Director integration. The configuration must enable automated onboarding of the switches as they come online. For security purposes, the switches must have the bare minimum of connection methods enabled. The connection protocol must allow authentication through credentials. Which protocol must be configured on the switches to allow automated onboarding?

- A. SNMP
- B. Telnet
- C. SSH
- D. HTTPS

Answer: C

NEW QUESTION 508

Refer to the exhibit.

Create Boot Policy

Name:

Description:

Reboot on Boot Order Change: ☐

Enforce vNIC/vHBA/SCSI Name: ☒

Boot Mode: ☒ Legacy ☐ UEFI

WARNINGS:
 The type (primary/secondary) does not indicate a boot order presence.
 The effective order of boot devices within the same device class (LAN/Storage/SCSI) is determined by PCIe bus scan order.
 If Enforce vNIC/vHBA/SCSI Name is selected and the vNIC/vHBA/SCSI does not exist, a config error will be reported.
 If it is not selected, the vNICs/vHBAs are selected if they exist, otherwise the vNIC/vHBA with the lowest PCIe bus scan order is used.

Boot Order

Name	Order	vNIC/vHBA	Type	LUN No.	WWN	Slot No.	Boot No.
No data available							

Local Devices
 CIMC Mounted vMedia
 vNICs
 vHBAs
 iSCSI vNICs
 EFI Shell

An engineer installs a new Cisco UCS B-Series server. The requirement is to install an operating system on a LUN that is provided by the Fibre Channel storage array. Which two steps must be configured in the boot policy to accomplish this goal? (Choose two.)

- A. Disable Enforce vNIC/vHBA/SCSI Name
- B. Add Local CD/DVD and SAN Boot.
- C. Configure a SAN Boot Target with a WWPN
- D. Set Boot Order to External USB and LAN Boot
- E. Create (SCSI VNICs and add Local LUN

Answer: AD

NEW QUESTION 513

Refer to the exhibit.

```
switch(config)# feature dhcp
switch(config)# ip dhcp snooping
switch(config)# service dhcp
switch(config)# ip dhcp snooping vlan 100,200,250-252
switch(config)# ip dhcp relay information option
```

Which action is taken to ensure that the relay agent forwards the DHCP BOOTREQUEST packet to a DHCP server?

- A. Configure the interface of the DHCP server as untrusted.
- B. Configure the IP address of the DHCP server.
- C. Enable the DHCP relay agent.
- D. Verify the DHCP snooping bindings.

Answer: B

Explanation:

https://www.cisco.com/c/en/us/td/docs/switches/datacenter/sw/4_0/dcnm/security/configuration/guide/sec_dcnm Text Description automatically generated

Configuring a DHCP Server Address on a VLAN Interface

You can configure a DHCP server IP address on a VLAN interface (sometimes referred to as a switched virtual interface or SVI). When an inbound DHCP BOOTREQUEST packet arrives on the VLAN interface, the relay agent forwards the packet to the IP address specified.

NEW QUESTION 517

A network engineer is adding a Cisco HyperFlex data platform to the Cisco intersight management portal. Which two components are required for Intersight to claim the Cisco HyperFlex data platform? (Choose two.)

- A. device FQDN
- B. device public IP address
- C. device claim code
- D. device ID
- E. device serial number

Answer: CD

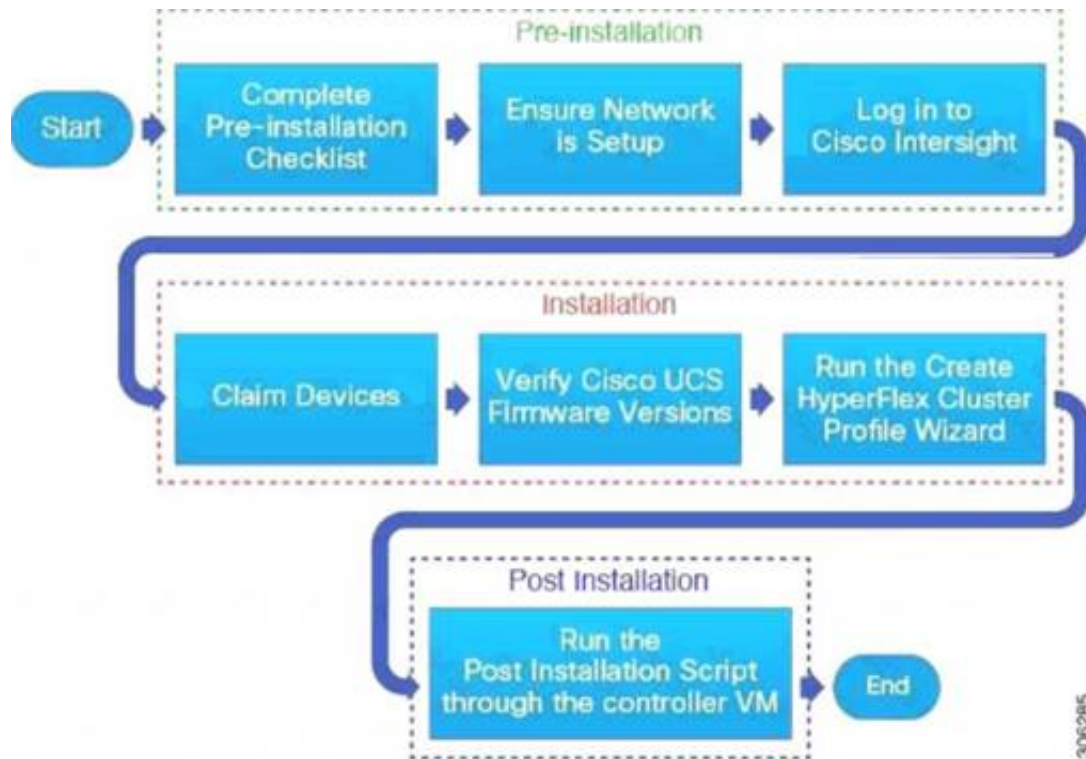
Explanation:

Text Description automatically generated

- Step 1 In the Cisco Intersight, left navigation pane, select **ADMIN > Targets**.
- Step 2 In the **Targets** details page, click **Claim a New Target**.
- Step 3 In the **Claim a New Target** wizard, select **Hyperconverged > Cisco HyperFlex Cluster** and complete the following fields:
- Note** You can locate the **Device ID** and the **Claim Code** information in:
- a. Cisco UCS Manager and Cisco IMC by navigating to **Admin > Device Connector**.
 - b. Cisco HyperFlex by navigating to **HyperFlex Connect UI > Settings > Device Connector**.
 - c. Cisco UCS Director by navigating to **Administration > Device Connector**.

UI Element	Essential Information
Device ID	Enter the applicable Device ID. <ul style="list-style-type: none">For a UCS Domain, use the serial number of the primary and subordinate FIs, in this format: (Serial number of FI-A & Serial number of FI-B). Example: [SAL1924GKV6&SAL1913CJ7V]For a standalone server, use serial number. Example: NGTR12345For HyperFlex, use Cluster UUID. Example: xxxxxxxx-xxxx-xxxx-xxxx-

Diagram, application Description automatically generated with medium confidence



https://www.cisco.com/c/en/us/td/docs/hyperconverged_systems/HyperFlex_HX_DataPlatformSoftware/HyperFlex_Installation_Guide_for_Intersight/b_HyperFlex_Installation_Guide_for_Intersight/b_HyperFlex_Installation_Guide_for_Intersight_chapter_011.html
<https://www.cisco.com/c/en/us/support/docs/hyperconverged-infrastructure/hyperflex-hx-dataplatform/214268-cisco-intersight-hyperflex-installatio.html>

NEW QUESTION 518

Which statement is true about upgrading the firmware on a Cisco MDS storage switch with dual supervisors?

- A. The standby supervisor must be offline before the firmware upgrade begins.
- B. Both supervisors load the new firmware and then the active supervisor reboots.
- C. Supervisors can be upgraded independently to test the new firmware.
- D. The new firmware is load on the standby supervisor first.

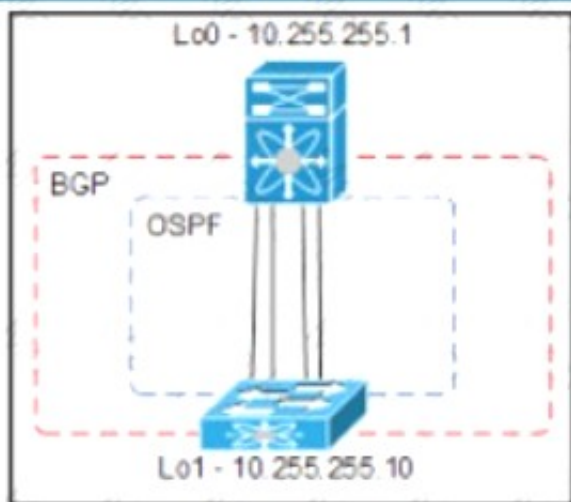
Answer: D

Explanation:

<https://www.cisco.com/c/en/us/support/docs/storage-networking/mds-9000-nx-os-san-os-software/118952-technote-mds9k-00.html#:~:text=On%20a%2095xx%20or%2097xx,becomes%20the%20new%20standby%20supervisor.>

NEW QUESTION 521

Refer to the exhibit



An engineer must provision a VXLAN deployment. The OSPF has already been configured as the underlay protocol. All BGP configurations will be performed using the template method. The deployment must meet these requirements:

- The local update source for leaf switches must be loopback 1
 - The router ID must be the local loopback IP address
 - The external BGP connections must use a template name
- Drag and drop the configuration snippets from the bottom to complete the configuration.


```

router bgp 65000
  router-id 
  template peer SPINE
  bfd
  remote-as 
  update-source loopback1
  timers 3 9
  address-family  peer
    send-community extended
  neighbor 
    peer SPINE

```

10.255.255.1	inherit	65000
10.255.255.10	12vpn	evpn

- A. Mastered
 B. Not Mastered

Answer: A

Explanation:

```

router bgp 65000
  router-id 10.255.255.10
  template peer SPINE
  bfd
  remote-as 65000
  update-source loopback1
  timers 3 9
  address-family 12vpn evpn
    send-community extended
  neighbor 10.255.255.1
    inherit peer SPINE

```

10.255.255.1	inherit	65000
10.255.255.10	12vpn	evpn

NEW QUESTION 522

An engineer must integrate Cisco ACI with a VMware vSphere environment. The requirement is to use a VMware Distributed Virtual Switch and to assign the encapsulation VLAN of the EPG from the VLAN pool. Which configuration set accomplishes this goal?

- A. Create a VMM domain association under the EPGs Create a VLAN pool with static allocated VLANs.
 B. Create a physical domain association under the EPGs Create a VLAN pool with static allocated VLANs.
 C. Create a physical domain association under the EPG
 D. Create a VLAN pool with oVnarmc allocated VLANs
 E. Create a VMM domain association under the EPGs Create a VLAN pool with dynamic allocated VLANs.

Answer: D

NEW QUESTION 527

AN engineer enters these commands while in EEM on a Cisco Nexus 9000 Series Switch. event manager applet Backup-config event timer watchdog time 1800 name timer
 event cli match "copy running-config startup-config" what is the result of applying this configuration?

- A. It saves the running configuration every 1800 seconds.
- B. It generates an error because no action is mentioned.
- C. It executes the copy running-config startup-config command.
- D. It blocks the copy running-config startup-config command.

Answer: B

Explanation:

<https://www.cisco.com/c/en/us/td/docs/switches/datacenter/nexus9000/sw/93x/system-management/b-cisco-nex-graphical-user-interface-text-application-email-description-automatically-generated>

Prerequisites for EEM

EEM has the following prerequisites:

- You must have network-admin user privileges to configure EEM.

Guidelines and Limitations for EEM

EEM has the following configuration guidelines and limitations:

- The maximum number of configurable EEM policies is 500.
- Action statements within your user policy or overriding policy should not negate each other or adversely affect the associated system policy.
- To allow a triggered event to process any default actions, you must configure the EEM policy to allow the default action. For example, if you match a CLI command in a match statement, you must add the event-default action statement to the EEM policy or EEM will not allow the CLI command to execute.
- When you configure an EEM policy action to collect **show tech** commands, make sure to allocate enough time for the **show tech** commands to complete before the same action is called again.

NEW QUESTION 532

An engineer is implementing traffic monitoring for a server vNIC that is configured with fabric failover enabled. The requirement is for the traffic to be sent to an analyzer, even during a failure of one of the fabric interconnects. The analyzer is connected to unconfigured Ethernet ports on both fabric interconnects. Which configuration accomplishes this task?

- A. Create two traffic monitoring session with different names, one per fabric Connect the analyzer connected to FI-BI the destination for both monitoring sessions.
- B. Create two traffic monitoring session with different names, one per fabric.
- C. Connect an analyser on each FI as the destination for the monitoring session local to the FI.
- D. Create two traffic monitoring sessions with the same name, one per fabric Connect the analyze connected to FI-A as the destination for both monitoring sessions

Answer: A

NEW QUESTION 536

Refer to the exhibit.

```
interface Ethernet1/1
description Server1
interface Ethernet1/2
description Server2
interface Ethernet1/3
description Server3
interface Ethernet1/4
description Server4
interface Ethernet1/5
description Server5
```

Which command is run from the Guest Shell to set the description on the first five interfaces of the Cisco Nexus switch?

- ☐ [guestshell@guestshell ~]\$ for x in {1..5}; do dohost "conf t" ; "interface eth1/\$x" ; "description Server\$x" ; done
- ☐ [guestshell@guestshell ~]\$ for x in {1..5}; dohost "conf t ; interface eth1/\$x ; description Server\$x";
- ☐ [guestshell@guestshell ~]\$ for x in {1..5}; dohost "conf t ; interface eth1/\$x ; description Server\$x" ;
- ☐ [guestshell@guestshell ~]\$ for x in {1..5}; do dohost "conf t ; interface eth1/\$x ; description Server\$x" ; done

- A. Option A
- B. Option B
- C. Option C
- D. Option D

Answer: D

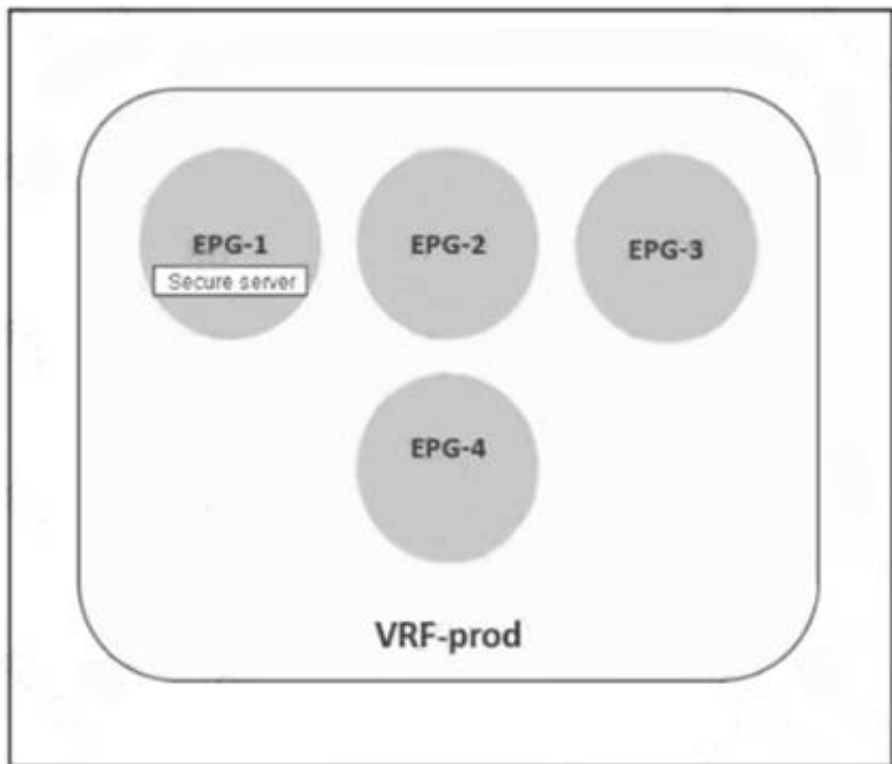
Explanation:

NXs1# guestshell

[admin@guestshell ~]\$ for x in {1..5}; do dohost "conf t ; interface eth1/\$x ; description Server\$x" ; done Enter configuration commands, one per line. End with CNTL/Z.
Enter configuration commands, one per line. End with CNTL/Z. Enter configuration commands, one per line. End with CNTL/Z. Enter configuration commands, one per line. End with CNTL/Z. Enter configuration commands, one per line. End with CNTL/Z. [admin@guestshell ~]\$

NEW QUESTION 540

Refer to the exhibit.



A secure server that provides services to EPG-2 must be placed in EPG-1. The remaining EPGs—EPG-2, EPG-3, and EPG-4—must communicate without any contracts. Which set of actions accomplishes this goal?

- ☒ Exclude EPG-2, EPG-3, and EPG-4 from the preferred group. Configure a contract between EPG-2 and EPG-3.
- ☐ Include EPG-2, EPG-3, and EPG-4 in the preferred group. Configure a contract between EPG-1 and EPG-2.
- ☐ Include EPG-1 and EPG-2 in the preferred group. Configure a contract between EPG-2 and EPG-3.
- ☐ Exclude EPG-2, EPG-3, and EPG-4 from the preferred group. Configure a contract between EPG-1 and EPG-3.

- A. Option A
- B. Option B
- C. Option C
- D. Option D

Answer: B

NEW QUESTION 542

Refer to the exhibit.

```
N9K-1# show running-config interface Ethernet1/1
switchport access vlan 10
spanning-tree port type edge
switchport port-security aging time 33
switchport port-security maximum 3
switchport port-security mac-address sticky
switchport port-security

N9K-1# show mac address-table interface ethernet 1/1
Legend:
    * - primary entry, G - Gateway MAC, (R) - Routed MAC, O - Overlay MAC
    age - seconds since last seen, + - primary entry using vPC Peer-Link,
    (T) - True, (F) - False, C - ControlPlane MAC, ~ - vsan
VLAN    MAC Address      Type    age    Secure NTFY Ports
-----+-----+-----+-----+-----+-----+
* 10    0050.7966.6801   secure  -      T      F      Eth1/1
* 10    0050.7966.6802   secure  -      T      F      Eth1/1
* 10    0050.7966.6803   secure  -      T      F      Eth1/1
```

An engineer configures port security on a Cisco Nexus 9000 Series Switch. The requirement is to prevent any newly learned MAC addresses from forwarding traffic on the interface. Also, the already learned MAC addresses must not be affected by the changes. Which configuration meets these requirements?

- A. switchport port-security violation shutdown
- B. switchport port-security violation isolate

- C. switchport port-security violation protect
- D. switchport port-security violation restrict

Answer: C

NEW QUESTION 543

Which two components should be checked when a Cisco Nexus 9000 Series Switch fails to boot using POAP? (Choose two.)

- A. image noted in the script file against switch bootflash
- B. DHCP server to bootstrap IP information
- C. script signed with security key
- D. TFTP server that contains the configuration script
- E. POAP feature license

Answer: BD

Explanation:

[https://www.cisco.com/c/en/us/td/docs/switches/datacenter/nexus9000/sw/7-x/troubleshooting/guide/ b_Cisco_Nexus_9000_Series_NX-OS_Troubleshooting_Guide_7x/b_Cisco_Nexus_9000_Series_NXOS_Troubleshooting_Guide_7x_chapter_01100.html](https://www.cisco.com/c/en/us/td/docs/switches/datacenter/nexus9000/sw/7-x/troubleshooting/guide/b_Cisco_Nexus_9000_Series_NX-OS_Troubleshooting_Guide_7x/b_Cisco_Nexus_9000_Series_NXOS_Troubleshooting_Guide_7x_chapter_01100.html)

https://www.cisco.com/c/en/us/td/docs/switches/datacenter/nexus9000/sw/7-x/fundamentals/configuration/ guide/b_Cisco_Nexus_9000_Series_NX-OS_Fundamentals_Configuration_Guide_7x/ b_Cisco_Nexus_9000_Series_NX-OS_Fundamentals_Configuration_Guide_7x_chapter_0100.html

NEW QUESTION 548

Drag and drop the NAS features from the left onto the NAS descriptions on the right. Not all features are used

block-based data storage	storage type
Ethernet protocol	clustering type
FCoE	connectivity type
file-based data storage	serving protocol type
Fibre Channel protocol	
stripe data and metadata across nodes	
UPnP	

- A. Mastered
- B. Not Mastered

Answer: A

Explanation:

A screenshot of a computer Description automatically generated with medium confidence

https://en.wikipedia.org/wiki/Network-attached_storage

NEW QUESTION 549

An engineer performs a set of configuration changes for the vPC domain using Session Manager. Which two commands are used to verify the configuration and apply the device changes when no errors are returned? (Choose two)

- A. write
- B. verify
- C. commit
- D. checkpoint
- E. apply

Answer: BC

Explanation:

https://www.cisco.com/c/en/us/td/docs/switches/datacenter/nexus9000/sw/6-x/system_management/configuratio

Verifying a Session

Use the following command in session mode to verify a session:

Command	Purpose
verify [verbose] Example: switch(config-s)# verify	Verifies the configuration as a whole, based on the existing hardware and software configuration and resources. Cisco NX-OS returns an error if the configuration does not pass this verification.

Committing a Session

Use the following command in session mode to commit a session:

Command	Purpose
commit [verbose] Example: switch(config-s)# commit	Validates the configuration changes made in the current session and applies valid changes to the device. If the validation fails, Cisco NX-OS reverts to the original configuration.

<https://www.cisco.com/c/en/us/td/docs/switches/datacenter/nexus5000/sw/configuration/guide/cli/CLIconfigura>

NEW QUESTION 552

An engineer must configure OSPFv2 connectivity between a pair of Cisco Nexus switches. The connection between the switches must meet these requirements:

- Use unicast for updates.
- Use decentralized communication of updates.
- Full adjacency between switches.

Which configuration is needed to meet these requirements?

- A. interface with a type of p2p network
- B. stub area between the neighbors
- C. filter list between the neighbors
- D. virtual link between the neighbors

Answer: A

NEW QUESTION 556

.....

Thank You for Trying Our Product

We offer two products:

1st - We have Practice Tests Software with Actual Exam Questions

2nd - Questions and Answers in PDF Format

350-601 Practice Exam Features:

- * 350-601 Questions and Answers Updated Frequently
- * 350-601 Practice Questions Verified by Expert Senior Certified Staff
- * 350-601 Most Realistic Questions that Guarantee you a Pass on Your First Try
- * 350-601 Practice Test Questions in Multiple Choice Formats and Updates for 1 Year

100% Actual & Verified — Instant Download, Please Click
[Order The 350-601 Practice Test Here](#)