

Exam Questions 400-007

Cisco Certified Design Expert (CCDE v3.0) Written Exam

<https://www.2passeasy.com/dumps/400-007/>



NEW QUESTION 1

Which two mechanisms avoid suboptimal routing in a network with dynamic mutual redistribution between multiple OSPFv2 and EIGRP boundaries? (Choose two.)

- A. AD manipulation
- B. matching OSPF external routes
- C. route tagging
- D. route tagging
- E. route filtering
- F. matching EIGRP process ID

Answer: DE

Explanation:

<https://www.cisco.com/c/en/us/support/docs/ip/enhanced-interior-gateway-routing-protocol-eigrp/8606-redist.ht>

NEW QUESTION 2

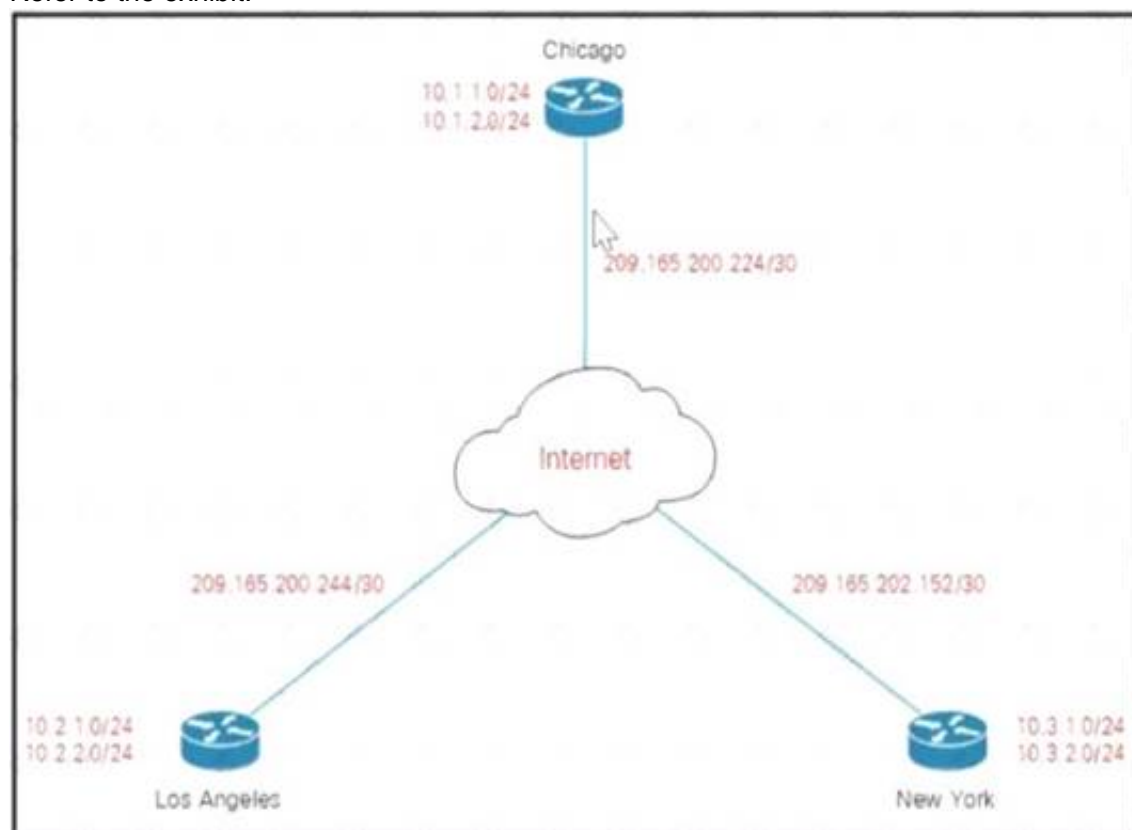
An enterprise solution team is performing an analysis of multilayer architecture and multicontroller SDN solutions for multisite deployments. The analysis focuses on the ability to run tasks on any controller via a standardized interface. Which requirement addresses this ability on a multicontroller platform?

- A. Deploy a root controller to gather a complete network-level view.
- B. Use the East-West API to facilitate replication between controllers within a cluster.
- C. Build direct physical connectivity between different controllers.
- D. Use OpenFlow to implement and adapt new protocols.

Answer: D

NEW QUESTION 3

Refer to the exhibit.



Company XYZ must design a DMVPN tunnel between the three sites Chicago is going to act as the NHS and the company wants DMVPN to detect peer endpoint failures Which technology should be used in the design?

- A. VPLS
- B. IP SLA
- C. GRE
- D. L2TPv3

Answer: B

NEW QUESTION 4

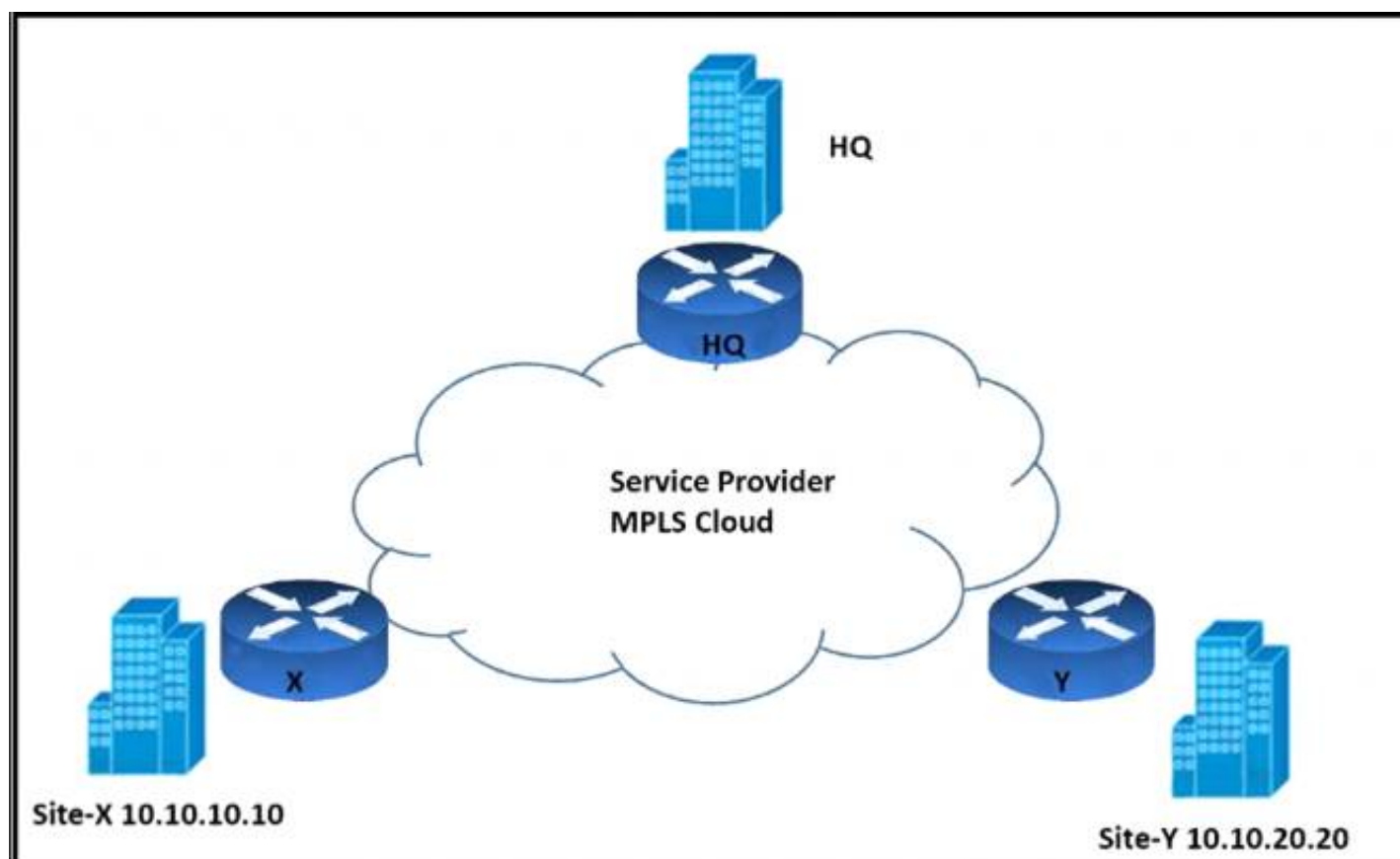
According to the CIA triad principles for network security design, which principle should be priority for a Zero Trust network?

- A. requirement for data-in-motion encryption and 2FA authentication
- B. requirement for data-at-rest encryption for user identification within the VPN termination hardware
- C. categorization of systems, data, and enterprise BYOD assets that are connected to network zones based on individual privacy needs
- D. ensuring that authorized users have high-availability system access from defined zones to defined systems or zones

Answer: A

NEW QUESTION 5

Refer to the exhibit.



An architect must design an enterprise WAN that connects the headquarters with 22 branch offices. The number of remote sites is expected to triple in the next three years. The final solution must comply with these requirements:

- Only the loopback address of each of the enterprise CE X and Y routers must be advertised to the interconnecting service provider cloud network.
- The transport layer must carry the VPNv4 label and VPN payload over the MP-BGP control plane.
- The transport layer must not be under service provider control.

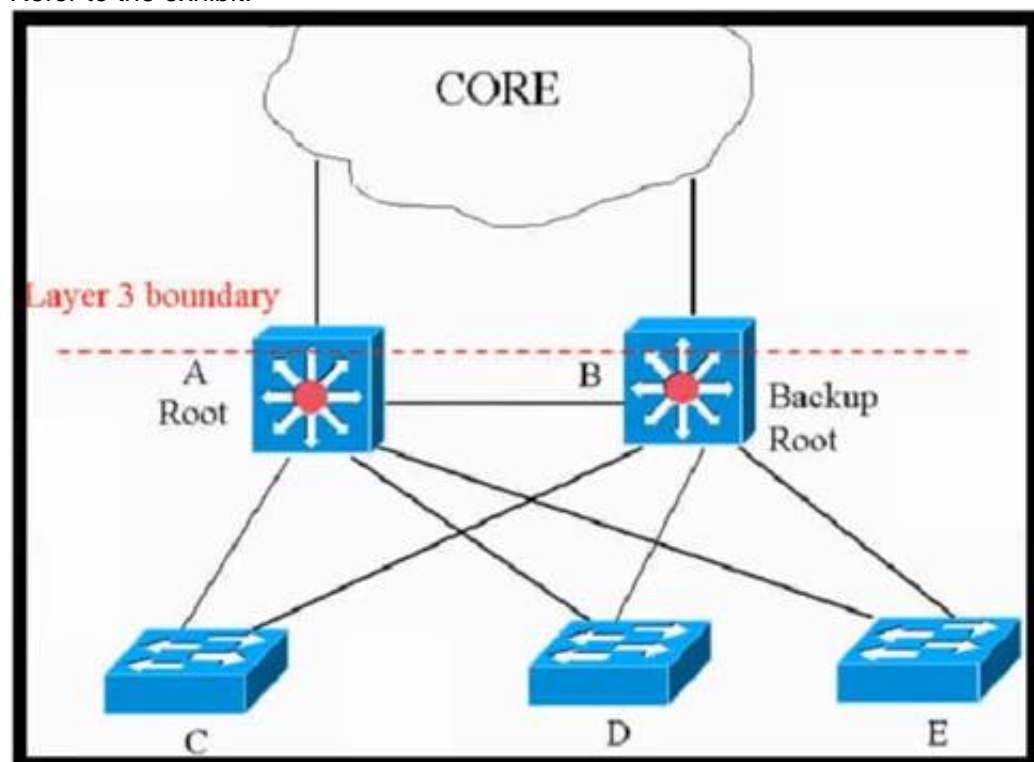
Which enterprise WAN transport virtualization technique meets the requirements?

- A. EIGRP Over the Top
- B. MPLS over BGP over multipoint GRE
- C. DMVPN per VRF
- D. point-to-point GRE per VRF

Answer: B

NEW QUESTION 6

Refer to the exhibit.



This network is running legacy STP 802.1 d. Assuming "hello_timer" is fixed to 2 seconds, which parameters can be modified to speed up convergence times after single link/node failure?

- A. The transit_delay=5 and dpdu_delay=20 are recommended values, considering helto_timer=2 and specified
- B. Only the maximum_transmission_halt_delay and diameter parameters are configurable parameters in 802. to speed up STP convergence process
- C. The max_age and forward delay parameters can be adjusted to speed up STP convergence process.
- D. Only the transit_delay and bpdu_delay timers are configurable parameters in 802.1d to speed up STP convergence process.

Answer: C

NEW QUESTION 7

A customer has a functional requirement that states HR systems within a data center should be segmented from other systems that reside in the same data center and same VLAN. The systems run legacy applications by using hard-coded IP addresses. Which segmentation method is suitable and scalable for the customer?

- A. data center perimeter firewalling
- B. VACLs on data center switches

- C. transparent firewalling
- D. routed firewalls

Answer: B

NEW QUESTION 8

Enterprise XYZ wants to implement fast convergence on their network and optimize timers for OSPF. However, they also want to prevent excess flooding of LSAs if there is a constantly flapping link on the network. Which timers can help prevent excess flooding of LSAs for OSPF?

- A. OSPF propagation timers
- B. OSPF throttling timers
- C. OSPF delay timers
- D. OSPF flooding timers

Answer: B

NEW QUESTION 9

Which issue poses a challenge for security architects who want end-to-end visibility of their networks?

- A. too many overlapping controls
- B. too many disparate solutions and technology silos
- C. an overabundance of manual processes
- D. a network security skills shortage

Answer: B

NEW QUESTION 10

What statement describes the application layer as defined in the software-defined networking architecture?

- A. This layer is responsible for collecting the network status such as network usage and topology.
- B. This layer contains programs that communicate their desired network behavior to controllers.
- C. This layer is responsible for handling packets based on the rules provided by the controller.
- D. This layer processes the instructions and requirements sent by networking components.

Answer: B

NEW QUESTION 10

What is a disadvantage of the traditional three-tier architecture model when east-west traffic between different pods must go through the distribution and core layers?

- A. low bandwidth
- B. security
- C. scalability
- D. high latency

Answer: A

NEW QUESTION 15

Which architecture does not require an explicit multicast signaling protocol, such as PIM or P2MP, to signal the multicast state hop-by-hop, but instead uses a link state protocol to advertise the multicast forwarding state?

- A. Binary indexed explicit routing
- B. Binary intermediate enhanced routing
- C. Bit indexed explicit replication
- D. Bi-directional implicit replication

Answer: C

NEW QUESTION 20

Company XYZ network runs IPv4 and IPv6 and they want to introduce a multidomain, multicast-based network. The new design should use a flavor of PIM that forwards traffic using SPT. Which technology meets this requirement?

- A. PIM-DM
- B. PIM-SM
- C. PIM-SSM
- D. BIDIR-PIM

Answer: C

NEW QUESTION 22

An architect receives a business requirement from a CTO that states the RTO and RPO for a new system should be as close as possible to zero. Which replication method and data center technology should be used?

- A. asynchronous replication over dual data centers via DWDM
- B. synchronous replication over geographically dispersed dual data centers via MPLS

- C. synchronous replication over dual data centers via Metro Ethernet
- D. asynchronous replication over geographically dispersed dual data centers via CWDM

Answer: B

Explanation:

RTO and RPO are measures of how quickly and accurately a system can be recovered after a disaster or failure. RTO refers to the amount of time it takes to restore a system to its normal operation after a failure, while RPO refers to the amount of data that can be lost as a result of a failure. In synchronous replication, data is written to both the primary and secondary systems at the same time. This ensures that the data on the secondary system is always up-to-date and ready for use in the event of a disaster or failure. Geographically dispersed dual data centers refer to two data centers that are located in different geographical locations, which can help to reduce the risk of a disaster or failure impacting both data centers at the same time.

NEW QUESTION 24

A network architect must redesign a service provider edge, where multiservice and multitenant PEs are currently present. Which design feature should be minimized in the new design to achieve reliability?

- A. bridging
- B. fate sharing
- C. redundancy
- D. unicast overlay routing

Answer: B

NEW QUESTION 26

What is a web-based model in which a third-party provider hosts applications that are available to customers over the Internet?

- A. PaaS
- B. SaaS
- C. IaaS
- D. WaaS

Answer: B

NEW QUESTION 29

A Service Provider is designing a solution for a managed CE service to a number of local customers using a single CE platform and wants to have logical separation on the CE platform using Virtual Routing and Forwarding (VRF) based on IP address ranges or packet length. Which is the most scalable solution to provide this type of VRF Selection process on the CE edge device?

- A. Static Routes for Route Leaking
- B. Policy Based Routing
- C. OSPF per VRF Instance
- D. Multi-Protocol BGP

Answer: B

NEW QUESTION 34

Which two benefits can software-defined networks provide to businesses? (Choose two.)

- A. provides additional redundancy
- B. reduction of OpEx/CapEx
- C. reduced latency
- D. decentralized management
- E. enables innovation
- F. meets high traffic demands

Answer: BE

NEW QUESTION 37

Which Interconnectivity method offers the fastest convergence in the event of a unidirectional issue between three Layer 3 switches connected together with routed links in the same rack in a data center?

- A. Copper Ethernet connectivity with BFD enabled
- B. Copper Ethernet connectivity with UDLD enabled
- C. Fiber Ethernet connectivity with BFD enabled
- D. Fiber Ethernet connectivity with UDLD enabled

Answer: C

NEW QUESTION 38

You were tasked to enhance the security of a network with these characteristics:

- A pool of servers is accessed by numerous data centers and remote sites
- The servers are accessed via a cluster of firewalls
- The firewalls are configured properly and are not dropping traffic
- The firewalls occasionally cause asymmetric routing of traffic within the server data center.

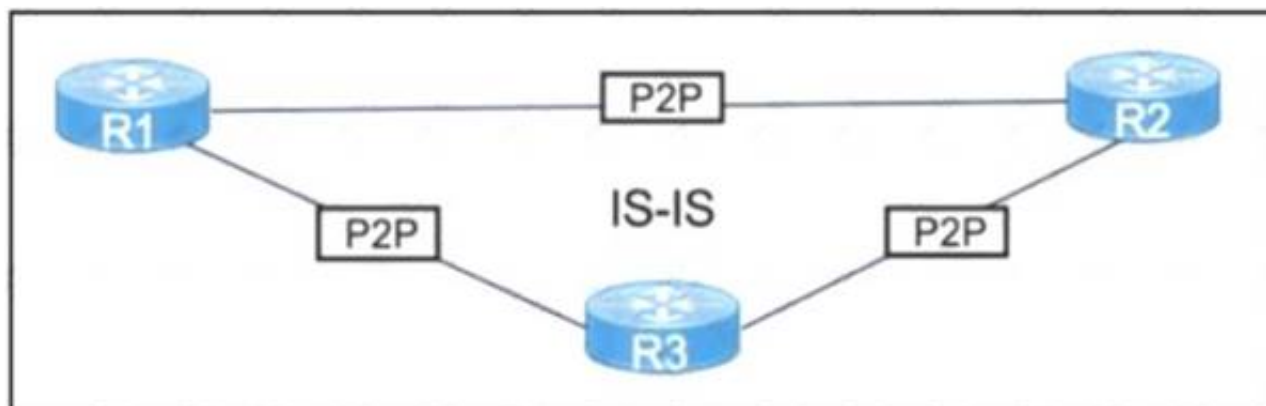
Which technology should you recommend to enhance security by limiting traffic that could originate from a hacker compromising a workstation and redirecting flows at the servers?

- A. Poison certain subnets by adding static routes to Null0 on the core switches connected to the pool of servers.
- B. Deploy uRPF strict mode.
- C. Limit sources of traffic that exit the server-facing interface of the firewall cluster with ACLs.
- D. Deploy uRPF loose mode

Answer: C

NEW QUESTION 41

Refer to the exhibit.



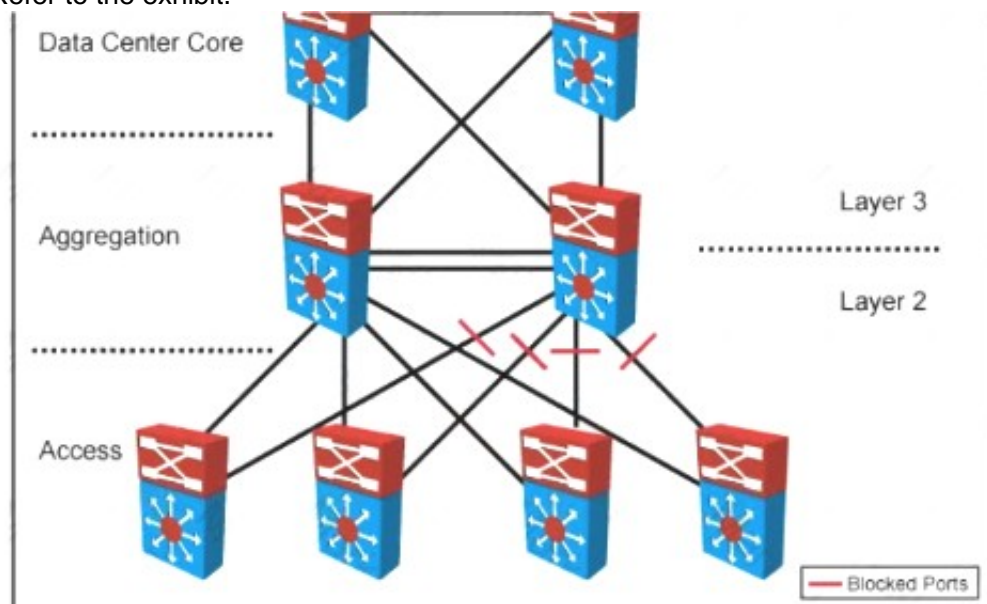
After a network audit a network engineer must optimize the current network convergence time. The proposed solution must consider link layer and control plane failures. Which solution meets the requirements?

- A. Configure debounce timers
- B. Increase fast hello timers
- C. Implement BFD
- D. Enable LSP fast flood

Answer: C

NEW QUESTION 45

Refer to the exhibit.



Your company designed a network to allow server VLANs to span all access switches in a data center. In the design, Layer 3 VLAN interfaces and HSRP are configured on the aggregation switches. Which two features improve STP stability within the network design? (Choose two.)

- A. BPDU guard on access ports
- B. BPDU guard on the aggregation switch downlinks toward access switches
- C. root guard on the aggregation switch downlinks toward access switches
- D. root guard on access ports
- E. edge port on access ports
- F. access switch pairs explicitly determined to be root and backup root bridges

Answer: AE

NEW QUESTION 47

Which three Cisco products are used in conjunction with Red Hat to provide an NFVi solution? (Choose three.)

- A. Cisco Prime Service Catalog
- B. Cisco Open Virtual Switch
- C. Cisco Nexus switches
- D. Cisco UCS
- E. Cisco Open Container Platform
- F. Cisco Virtual Network Function

Answer: CDF

NEW QUESTION 50

Which two statements describe the usage of the IS-IS overload bit technique? (Choose two.)

- A. If overload-bit is set on a Level 2 intermediate system, the other Level 2 intermediate systems in the topology will stop using the overloaded IS to forward Level

- 2 traffic However, the intermediate system can still forward Level 1 traffic
- B. It can be set in intermediate systems (IS-IS routers) to prioritize control plane CSNP packets.
- C. It can be used to automatically synchronize the link-state database between Level 1 intermediate systems
- D. It can be set in intermediate systems (IS-IS routers) to avoid traffic black holes until routing protocols are fully converged after a reload operation.
- E. It can be set in intermediate systems (IS-IS routers) to attract transit traffic from other intermediate systems

Answer: AD

NEW QUESTION 52

Drag and drop the design characteristics from the left onto the correct network filter techniques on the right. Not all options are used.

It is used to prevent spoofing attacks when there are alternate routes to a given IP address

It is used to check the existence of a route without regard to the incoming interface

It is a dynamic filter

It requires manual configuration

It is used as a filtering technique for Martian IP addresses

Ingress Access Lists

target 1

Strict Reverse Path Forwarding

target 2

Feasible Path Reverse Path Forwarding

target 3

Loose Reverse Path Forwarding

target 4

- A. Mastered
- B. Not Mastered

Answer: A

Explanation:

It is used to prevent spoofing attacks when there are alternate routes to a given IP address

It is used to check the existence of a route without regard to the incoming interface

It is a dynamic filter

It requires manual configuration

It is used as a filtering technique for Martian IP addresses

Ingress Access Lists

It requires manual configuration

Strict Reverse Path Forwarding

It is a dynamic filter

Feasible Path Reverse Path Forwarding

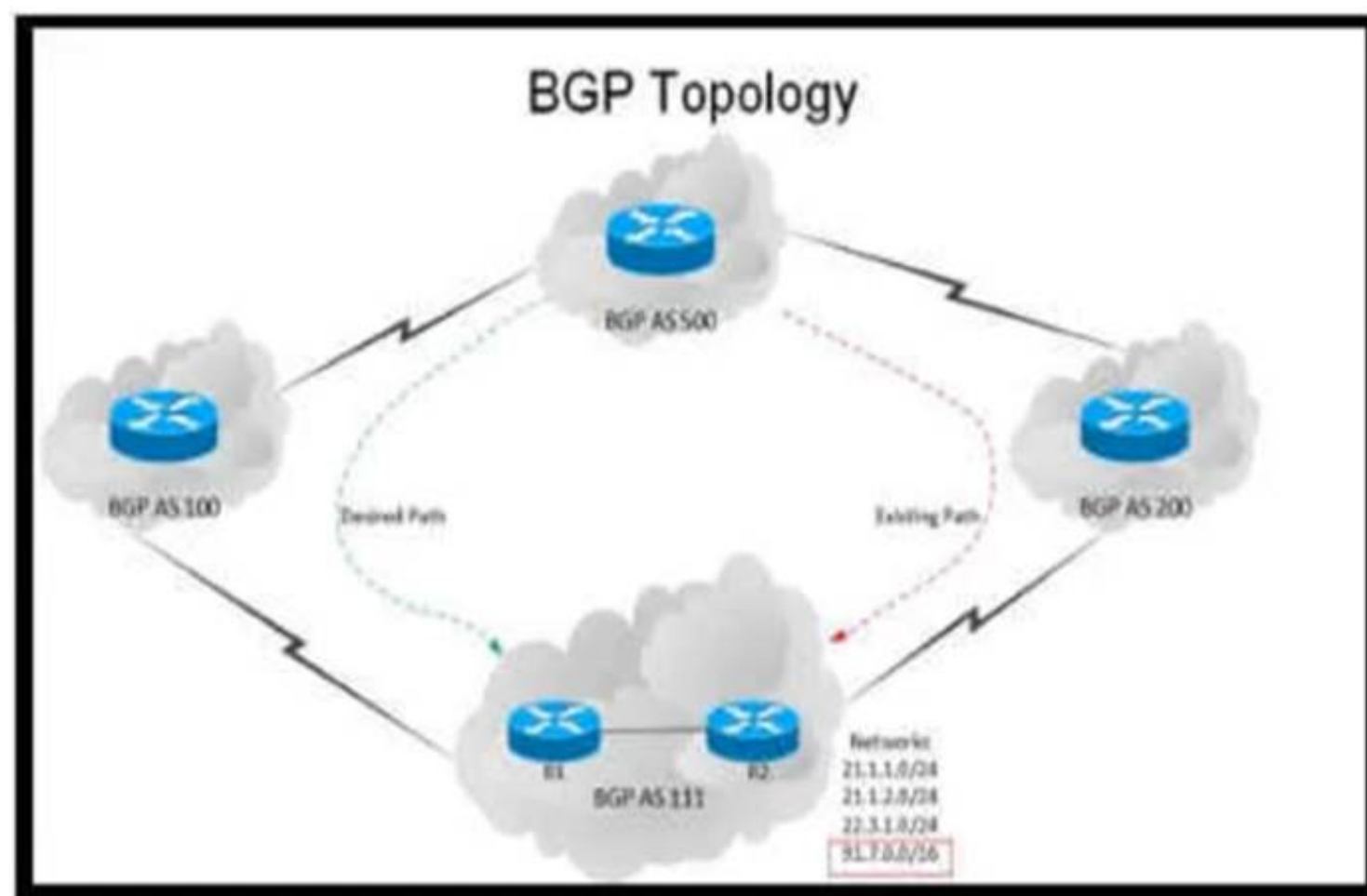
It is used to prevent spoofing attacks when there are alternate routes to a given IP address

Loose Reverse Path Forwarding

It is used as a filtering technique for Martian IP addresses

NEW QUESTION 54

Refer to the exhibit.



An engineer has been asked to redesign the traffic flow toward AS 111 coming from AS 500. Traffic destined to AS 111 network 91.7.0.0/16 should come in via AS 100, while traffic destined to all other networks in AS 111 should continue to use the existing path. Which BGP attributes are best suited to control this inbound traffic coming from BGP AS 500 into the 91.7.0.0/16 network?

- A. Prepend AS path for the 91.7.0.0/16 network and set it for neighbor in AS 200.
- B. Use extended community for the 91.7.0.0/16 network, not advertising it to the bi-lateral peer.
- C. Use local preference on R1 for the networks that AS 500 advertises to AS 111.
- D. Set higher MED for neighbor in AS 100 to influence incoming traffic for the 91.7.0.0/16 network.

Answer: A

NEW QUESTION 58

A business wants to centralize services via VDI technology and to replace remote WAN desktop PCs with thin client-type machines to reduce operating costs. Which consideration supports the new business requirement?

- A. VDI servers should be contained centrally within a DMZ
- B. The thin client traffic should be placed in a WAN QoS priority queue
- C. VDI servers should be contained within dedicated VLANs in each branch location
- D. The WAN should offer low latency and be resized

Answer: D

NEW QUESTION 61

In search of a system capable of hosting, monitoring compiling, and testing code in an automated way, what can be recommended to the organization?

- A. Jenkins
- B. Ansible
- C. Perl
- D. Chef

Answer: A

NEW QUESTION 66

Company XYZ wants to redesign the Layer 2 part of their network and wants to use all available uplinks for increased performance. They also want to have end host reachability supporting conversational learning. However, due to design constraints, they cannot implement port-channel on the uplinks. Which other technique can be used to make sure the uplinks are in active/active state?

- A. TRILL
- B. LISP
- C. MSTP
- D. switch stack

Answer: B

NEW QUESTION 68

Company XYZ is designing the IS-IS deployment strategy for their multiarea IS-IS domain. They want IS-IS neighbour relationships to be minimized on each network segment and want to optimize the size of the IS-IS LSDB on each router. Which design can be used to meet these requirements?

- A. Design all routers as Level 2 router
- B. Set the links between the routers as Level 1 with the area
- C. Design the network so that the routers connecting to other areas are Level 2 routers and internal routers are Level 1

- D. Design the network so that all routers are Level 1 routers
E. Design the network so that the routers connecting to other areas are Level 1/Level 2 routers and internal routers are Level 1

Answer: D

NEW QUESTION 71

A network attacker exploits application flaws to compromise critical systems in the organization with these objectives:

- Obtain sensitive data and export the data out of the network.
- Compromise developer and administrator credentials to potentially

What is the next step after application discovery is completed in Zero Trust networkings

- A. Establish visibility and behavior modeling
B. Enforce policies and microsegmentation.
C. Assess real-time security health.
D. Ensure trustworthiness of systems.

Answer: A

Explanation:

<https://www.cisco.com/c/en/us/solutions/collateral/enterprise/design-zone-security/zt-arch-guide.html>

NEW QUESTION 72

An enterprise organization currently provides WAN connectivity to their branch sites using MPLS technology, and the enterprise network team is considering rolling out SD-WAN services for all sites.

With regards to the deployment planning, drag and drop the actions from the left onto the corresponding steps on the right.

Select deployment models between virtual server software and hardware-based SD-WAN appliances.	step 1
Conduct a pilot test to observe and record unexpected issues.	step 2
Make an assessment of running protocols and application usage in the network.	step 3
Evaluate existing circuits and performance to get details of connectivity cost and reliability.	step 4
Layout transport plan based on business prioritizes traffic and the unique bandwidth requirements of each specific application.	step 5
Understand the traffic monitoring requirements and capabilities.	step 6

- A. Mastered
B. Not Mastered

Answer: A

Explanation:

Table Description automatically generated with medium confidence

NEW QUESTION 73

What is the most important operational driver in building a resilient and secure modular network design?

- A. Dependencies on hardware or software that is difficult to scale
B. Minimize app downtime
C. Reduce the frequency of failures requiring human intervention
D. Increase time spent on developing new features

Answer: B

NEW QUESTION 77

Which three items do you recommend for control plane hardening of an infrastructure device? (Choose three.)

- A. redundant AAA servers
B. Control Plane Policing
C. warning banners
D. to enable unused .services
E. SNMPv3
F. routing protocol authentication

Answer: BEF

NEW QUESTION 80

Which two actions ensure voice quality in a branch location with a low-speed, high-latency WAN connection? (Choose two.)

- A. Increase WAN bandwidth
- B. Increase memory branch switch.
- C. Fragment data packets.
- D. Replace any electrical links with optical links
- E. Prioritize voice packets

Answer: CE

NEW QUESTION 85

Company XYZ wants to prevent switch loops caused by unidirectional point-point-link condition on Rapid FVST + and MST. Which technology can be used in the design to meet this requirement?

- A. STPBPDU guard
- B. STP bridge assurance
- C. MSTP
- D. TRILL

Answer: B

NEW QUESTION 88

A healthcare provider discovers that protected health information of patients was altered without patient consent. The healthcare provider is subject to HIPAA compliance and is required to protect PHI data. Which type of security safeguard should be implemented to resolve this issue?

- A. technical and physical access control
- B. administrative security management processes
- C. physical device and media control
- D. technical integrity and transmission security

Answer: D

Explanation:

https://www.cisco.com/en/US/docs/solutions/Enterprise/Compliance/HIPAA/HIP_AppC.html#wp1085353

NEW QUESTION 89

Which parameter is the most important factor to consider when deciding service placement in a cloud solution?

- A. data replication cost
- B. application structure
- C. security framework Implementation time
- D. data confidentiality rules

Answer: D

NEW QUESTION 93

Company XYZ is running SNMPv1 in their network and understands that it has some flaws. They want to change the security design to implement SNMPv3 in the network Which network threat is SNMPv3 effective against?

- A. man-in-the-middle attack
- B. masquerade threats
- C. DDoS attack
- D. brute force dictionary attack

Answer: D

NEW QUESTION 97

Which purpose of a dynamically created tunnel interface on the design of IPv6 multicast services is true?

- A. first-hop router registration to the RP
- B. multicast client registration to the RP
- C. multicast source registration to the RP
- D. transport of all IPv6 multicast traffic

Answer: D

NEW QUESTION 98

An engineer must design a network for a company that uses OSPF LFA to reduce loops. Which type of loop would be reduced by using this design?

- A. DTP
- B. micro loops
- C. STP

D. REP

Answer: B

NEW QUESTION 103

Company XYZ Is running a redundant private WAN network using OSPF as the underlay protocol The current design accommodates for redundancy In the network, but it Is taking over 30 seconds for the network to reconverge upon failure Which technique can be Implemented In the design to detect such a failure in a subsecond?

- A. STP
- B. fate sharing
- C. OSPF LFA
- D. BFD
- E. flex links

Answer: D

NEW QUESTION 104

Company XYZ is planning to deploy primary and secondary (disaster recovery) data center sites. Each of these sites will have redundant SAN fabrics and data protection is expected between the data center sites. The sites are 100 miles (160 km) apart and target RPO/RTO are 3 hrs and 24 hrs, respectively. Which two considerations must Company XYZ bear in mind when deploying replication in their scenario? (Choose two.)

- A. Target RPO/RTO requirements cannot be met due to the one-way delay introduced by the distance between sites.
- B. VSANs must be routed between sites to isolate fault domains and increase overall availability.
- C. Synchronous data replication must be used to meet the business requirements
- D. Asynchronous data replication should be used in this scenario to avoid performance impact in the primary site.
- E. VSANs must be extended from the primary to the secondary site to improve performance and availability.

Answer: CD

Explanation:

synchronous data replication must be used to meet the business requirements, is incorrect. As described above, asynchronous replication would be a better choice in this scenario due to the distance between the data center sites and the target RPO/RTO requirements.

asynchronous data replication should be used in this scenario to avoid performance impact in the primary site, is correct. Asynchronous replication would allow Company XYZ to meet the target RPO/RTO requirements while avoiding the performance impact of synchronous replication.

NEW QUESTION 107

Company XYZ has 30 sites using MPLS L3 VPN and the company is now concerned about data integrity. The company wants to redesign the security aspect of their network based on these requirements:

- Securely transfer the corporate data over the private WAN
- Use a centralized configuration model.
- Minimize overhead on the tunneled traffic.

Which technology can be used in the new design to meet the company's requirements?

- A. S-VTI
- B. DMVPN
- C. MGRE
- D. GET VPN

Answer: D

NEW QUESTION 109

Which two pain points are the most common for container technology adoption? (Choose two)

- A. Performance
- B. Security
- C. Cost
- D. Container deployment
- E. Skilled staff
- F. Compliance

Answer: DE

NEW QUESTION 113

A business invests in SDN and develops its own SDN controller that, due to budget constraints, runs on a single controller. The controller actively places an exclusive lock on the configuration of the devices to ensure it is the only source of changes to the environment. What is the result if the controller fails?

- A. All device configurations are in read-only mode until the controller is restored.
- B. The control plane is unavailable until the controller is restored.
- C. If a device fails, the configuration backup is unavailable
- D. Manual changes are only possible until the controller is restored

Answer: B

NEW QUESTION 116

You are designing a network for a branch office. In order to improve convergence time, you are required to use the BFD feature Which four routing protocols can you use to facilitate this? (Choose four.)

- A. IS-IS
- B. static
- C. RIP
- D. EIGRP
- E. BGP

Answer: ABDE

NEW QUESTION 121

A multicast network is using Bidirectional PIM. Which two combined actions achieve high availability so that two RPs within the same network can act in a redundant manner? (Choose two)

- A. Use two phantom RP addresses
- B. Manipulate the administration distance of the unicast routes to the two RPs
- C. Manipulate the multicast routing table by creating static mroutes to the two RPs
- D. Advertise the two RP addresses in the routing protocol
- E. Use anycast RP based on MSDP peering between the two RPs
- F. Control routing to the two RPs through a longest match prefix

Answer: AF

Explanation:

<https://community.cisco.com/t5/networking-knowledge-base/rp-redundancy-with-pim-bidir-phantom-rp/ta-p/31>

NEW QUESTION 123

Which design solution reduces the amount of IGMP state in the network?

- A. IGMP filtering
- B. IGMPv3 with PIM-SSM
- C. multiple multicast domains
- D. one multicast group address thorough network regardless of IGMP version

Answer: A

NEW QUESTION 125

A product manufacturing organization is integrating cloud services into their IT solution. The IT team is working on the preparation phase of the implementation approach, which includes the Define Strategy step. This step defines the scope of IT, the application, and the service. What is one topic that should be considered in the Define Strategy step?

- A. financial and governance models
- B. innovate and align with business according to volume
- C. due diligence and financial scenarios
- D. contingency exit strategy steps

Answer: D

NEW QUESTION 130

Which two factors provide multifactor authentication for secure access to applications and data, no matter where the users are or which devices they are on? (Choose two.)

- A. persona-based
- B. power-based
- C. push-based
- D. possession-based
- E. pull-based

Answer: CD

NEW QUESTION 134

Which design principal improves network resiliency?

- A. Added load-balancing
- B. Added redundancy
- C. Added confidentiality
- D. Added reliability

Answer: B

NEW QUESTION 139

Company XYZ is designing the network for IPv6 security and they have these design requirements:

- A switch or router must deny access to traffic from sources with addresses that are correct, but are topologically incorrect
- Devices must block Neighbor Discovery Protocol resolution for destination addresses that are not found in the binding table.

Which two IPv4 security features are recommended for this company? (Choose two)

- A. IPv6 DHCP Guard
- B. IPv6 Source Guard

- C. IPv6 Destination Guard
- D. IPv6 Prefix Guard
- E. IPv6 RA Guard

Answer: CD

Explanation:

https://www.cisco.com/c/dam/global/ja_jp/td/docs/ios-xml/ios/ipv6_fhsec/configuration/xe-16/ip6f-xe-16-book.

NEW QUESTION 144

A key to maintaining a highly available network is building in the appropriate redundancy to protect against failure. This redundancy is carefully balanced with the inherent complexity of redundant systems. Which design consideration is relevant for enterprise WAN use cases when it comes to resiliency?

- A. Design in a way that expects outages and attacks on the network and its protected resources
- B. The design approach should consider simple and centralized management aspect
- C. Design in a way that it simplifies and improves ease of deployment
- D. Design automation tools wherever it is appropriate for greater visibility

Answer: A

NEW QUESTION 145

Your network operations team is deploying Access Control Lists (ACLs) across your Internet gateways. They wish to place an ACL inbound on the Internet gateway interface facing the core network (the "trusted" interface). Which IP address would the ACL need for traffic sourced from the inside interface, to match the source address of the traffic?

- A. inside global
- B. outside global
- C. inside local
- D. outside local

Answer: C

NEW QUESTION 148

What are two design constraints in a standard spine and leaf architecture? (Choose two.)

- A. Spine switches can connect to each other.
- B. Each spine switch must connect to every leaf switch.
- C. Leaf switches must connect to each other.
- D. Endpoints connect only to the spine switches.
- E. Each leaf switch must connect to every spine switch.

Answer: BE

NEW QUESTION 153

While designing a switched topology, in which two options is UplinkFast recommended? (Choose two.)

- A. when switches of different spanning-tree types are connected (for example, 802.1d connecting to 802.1w)
- B. 802.1d connecting to 802.1w)
- C. on distribution layer switches
- D. when hello timers are changed to more aggressive values
- E. on access layer switches
- F. on the core switches

Answer: AD

NEW QUESTION 156

Company XYZ wants to improve the security design of their network to include protection from reconnaissance and DoS attacks on their sub interfaces destined toward next hop routers. Which technology can be used to prevent these types of attacks?

- A. MPP
- B. CPPr
- C. CoPP
- D. DPP

Answer: B

Explanation:

<https://learningnetwork.cisco.com/s/question/0D53i00000KsuyvCAB/copp-vs-cppr>

NEW QUESTION 158

Which two possible drawbacks should you consider when introducing Network Functions Virtualization in a network design? (Choose two.)

- A. Bandwidth utilization increases
- B. Traffic flows are suboptimal
- C. High-end routers are required to support NFV
- D. OpenFlow must be supported in the network

E. An SDN orchestration layer is required to support NFV

Answer: CE

NEW QUESTION 159

Company XYZ has designed their network to run GRE over IPsec on their Internet-based VPN to connect two sites. Which IPsec tunneling feature can they enable to optimize the data flow while ensuring that the headers contain no duplicate IP addresses?

- A. Transport Mode in IPsec Phase I
- B. Transport Mode in IPsec Phase II
- C. Tunnel Mode in IPsec Phase II
- D. Tunnel Mode in IPsec Phase I

Answer: B

NEW QUESTION 164

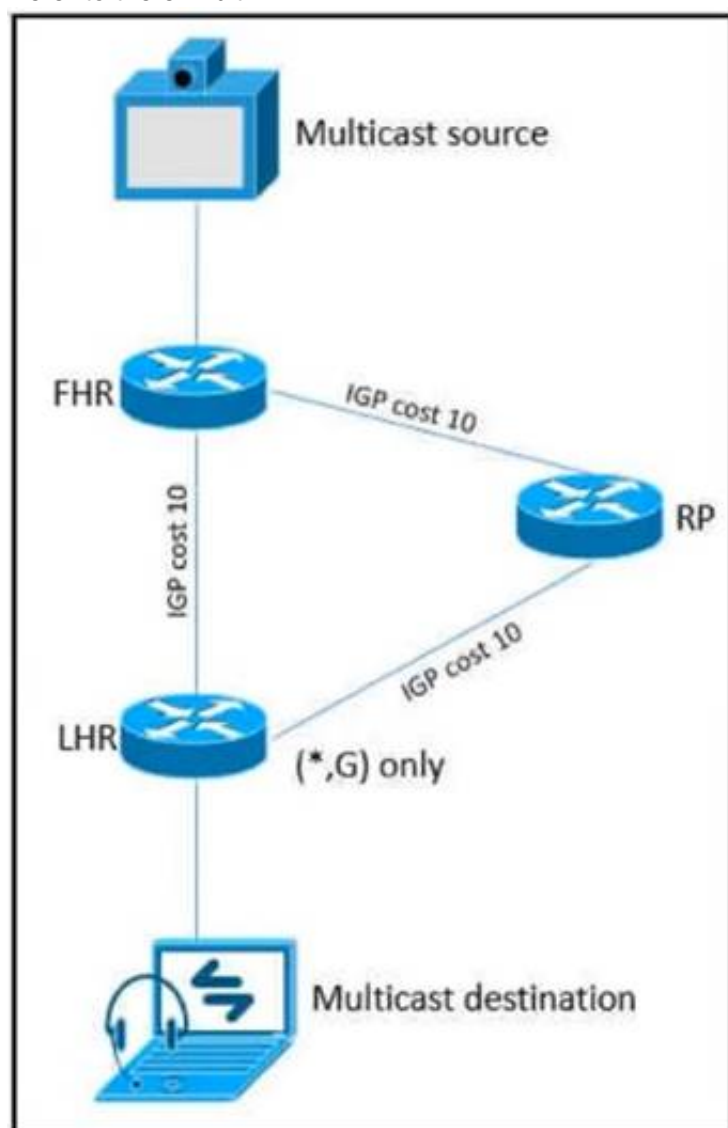
A software-defined networking (SDN) controller teams network topology information by using BGP link-state sessions with the route reflectors of an MPLS-enabled network. The controller then uses the topology information to apply on-demand traffic policies to the network through a protocol that is supported from all Layer 3 routers. Each policy is represented as a RIB entry in the control plane of the router. Which SDN model has been implemented?

- A. SDN centralized
- B. SDN traffic engineering
- C. SD-WAN
- D. SDN hybrid

Answer: B

NEW QUESTION 167

Refer to the exhibit.



As part of a redesign project, you must predict multicast behavior. What happens to the multicast traffic received on the shared tree (*,G), if it is received on the LHR interface indicated*?

- A. It is dropped due to an unsuccessful RPF check against the multicast source
- B. It is switched given that no RPF check is performed
- C. It is switched due to a successful RPF check against the routing table
- D. It is dropped due to an unsuccessful RPF check against the multicast receiver.

Answer: A

Explanation:

<https://www.cisco.com/c/en/us/support/docs/ip/ip-multicast/16450-mcastguide0.html>

When a multicast packet arrives on an interface, the RPF process checks to ensure that this incoming interface is the outgoing interface used by unicast routing in order to reach the source of the multicast packet. This RPF check process prevents loops. Multicast routing does not forward a packet unless the source of the packet passes a RPF check. Once a packet passes this RPF check, multicast routing forwards the packet based only upon the destination address.

NEW QUESTION 170

Which two benefits can software defined networks provide to businesses? (Choose two.)

- A. provides additional redundancy
- B. decentralized management
- C. reduced latency
- D. enables innovation
- E. reduction of OpEx/CapEx
- F. meets high traffic demands

Answer: DE

NEW QUESTION 172

Which two characteristics apply to firewall transparent mode operations in a firewall solution design? (Choose two.)

- A. Changes in the existing IP addressing and subnets are required
- B. The firewall can participate actively on spanning tree.
- C. Multicast traffic can traverse the firewall.
- D. OSPF adjacencies can be established through the firewall
- E. The firewall acts like a router hop in the network.

Answer: CD

NEW QUESTION 177

As network designer, which option is your main concern with regards to virtualizing multiple network zones into a single hardware device?

- A. Fate sharing
- B. CPU resource allocation
- C. Congestion control
- D. Security
- E. Bandwidth allocation

Answer: A

NEW QUESTION 178

What are two advantages of controller-based networks versus traditional networks? (Choose two.)

- A. the ability to have forwarding tables at each device
- B. more flexible configuration per device
- C. more consistent device configuration
- D. programmatic APIs that are available per device
- E. the ability to configure the features for the network rather than per device

Answer: CE

NEW QUESTION 179

Which two statements describe network automation and network orchestration? (Choose two.)

- A. Network automation does not provide governance or policy management.
- B. Network automation spans multiple network services, vendors, and environments.
- C. Network orchestration is done through programmatic REST APIs enabling automation across devices and management platforms.
- D. Provisioning network services is an example of network automation.
- E. Network orchestration is used to run single, low-level tasks without human intervention

Answer: AC

NEW QUESTION 184

An architect receives a functional requirement for a NAC system from a customer security policy stating that if a corporate Wi-Fi device does not meet current AV definitions, then it cannot access the corporate network until the definitions are updated. Which component should be built into the NAC design?

- A. posture assessment with remediation VLAN
- B. quarantine SGTs
- C. dACLs with SGTs
- D. quarantine VLAN

Answer: A

NEW QUESTION 189

The SD-WAN architecture is composed of separate orchestration management, control, and data planes Which activity happens at the orchestration plane?

- A. automatic onboarding of the SD-WAN routers into the SD-WAN overlay
- B. decision-making process on where traffic flows
- C. packet forwarding
- D. central configuration and monitoring

Answer: D

NEW QUESTION 191

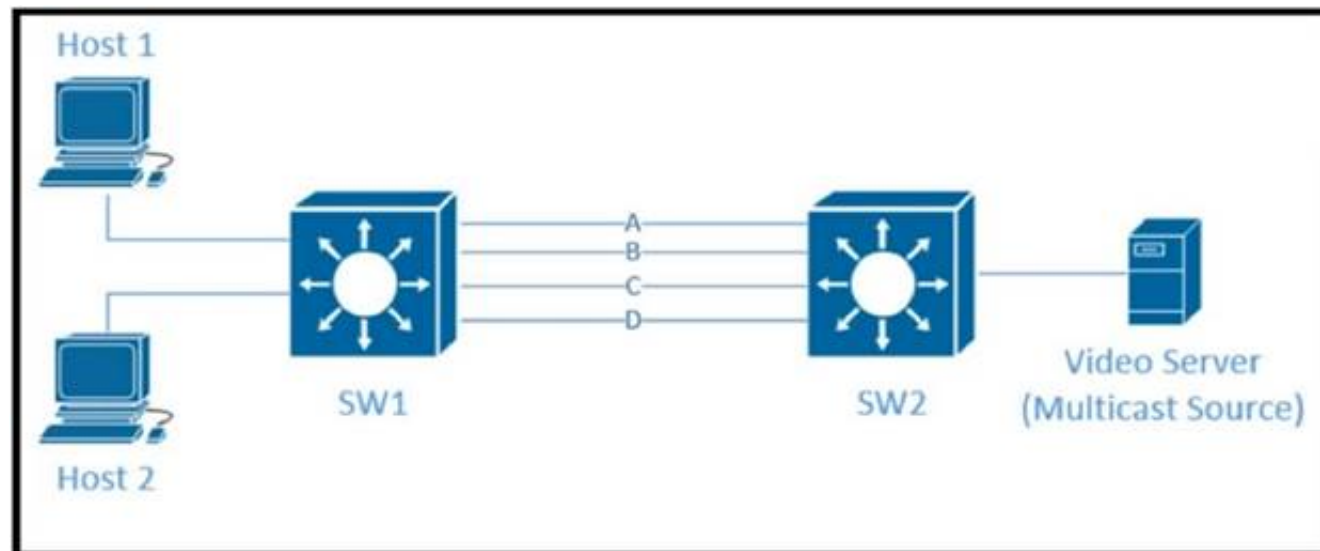
A company requires an RPO of less than 10 seconds to ensure business continuity. Which technology should be deployed?

- A. geographically dispersed data centers with asynchronous replication
- B. a single data center with duplicated infrastructure, dual PSUs, and a UPS
- C. geographically dispersed data centers with synchronous replication
- D. a single data center with duplicated infrastructure and dual PSUs

Answer: C

NEW QUESTION 194

Refer to the exhibit.



Traffic was equally balanced between Layer 3 links on core switches SW1 and SW2 before an introduction of the new video server in the network. This video server uses multicast to send video streams to hosts and now one of the links between core switches is over utilized Which design solution solves this issue?

- A. Add more links between core switches.
- B. Aggregate links Layer 2 link aggregation.
- C. Apply a more granular load- balancing method on SW1.
- D. Apply a more granular load-balancing method on SW2.
- E. Filter IGMP joins on an over -utilized link.

Answer: B

NEW QUESTION 198

A network security team observes phishing attacks on a user machine from a remote location. The organization has a policy of saving confidential data on two different systems using different types of authentication. What is the next step to control such events after the security team verifies all users in Zero Trust modeling?

- A. Enforce risk-based and adaptive access policies.
- B. Assess real-time security health of devices.
- C. Apply a context-based network access control policy for users.
- D. Ensure trustworthiness of devices.

Answer: B

NEW QUESTION 199

An architect prepares a network design for a startup company. The design must be able to meet business requirements while the business grows and divests due to rapidly changing markets. What is the highest priority in this design?

- A. The network should be hierarchical
- B. The network should be modular.
- C. The network should be scalable.
- D. The network should have a dedicated core.

Answer: A

NEW QUESTION 201

Which aspect of BGP-LS makes it scalable in large network when multiarea topology information must be gathered?

- A. transmit flow control
- B. open-loop flow control
- C. hardware flow control
- D. TCP-based flow control

Answer: A

NEW QUESTION 203

Which two factors must be considered for high availability in campus LAN designs to mitigate concerns about unavailability of network resources? (Choose two.)

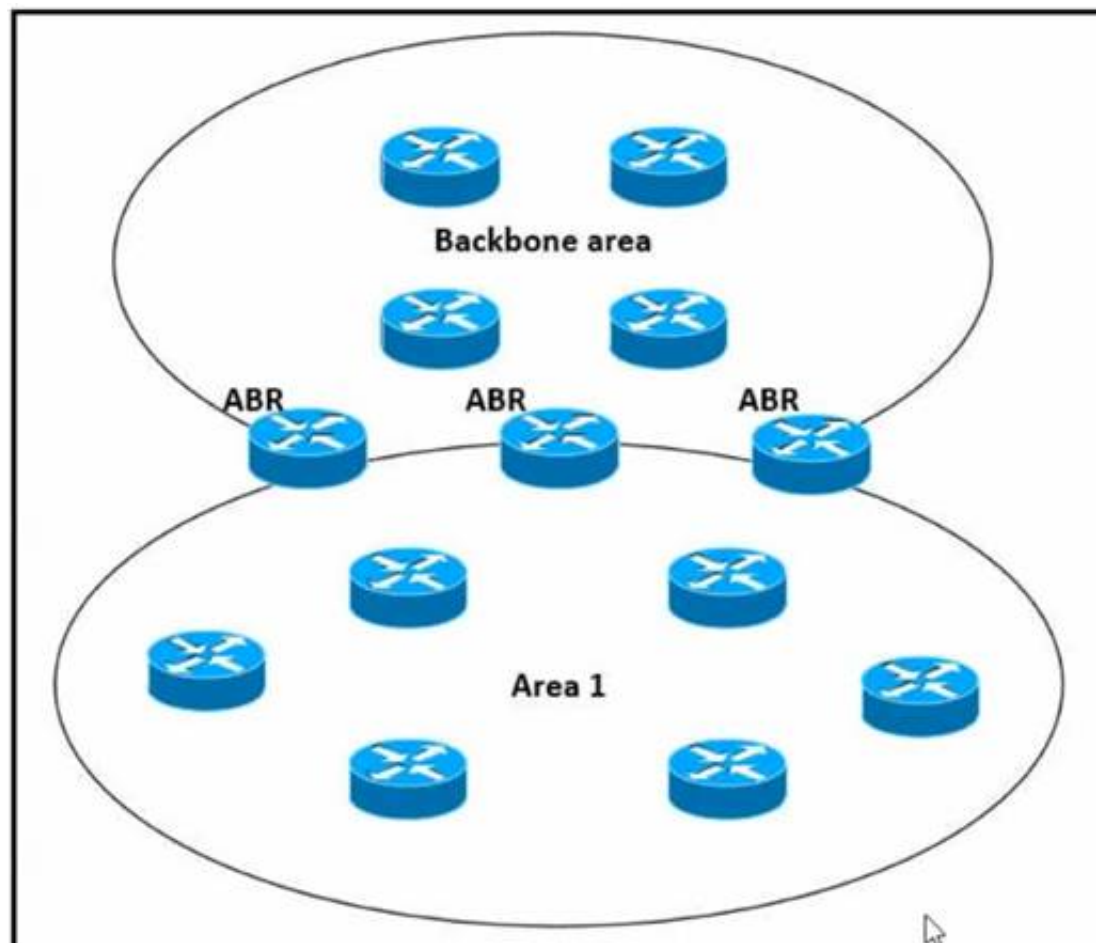
- A. device resiliency
- B. device type

- C. network type
- D. network resiliency
- E. network size

Answer: AD

NEW QUESTION 207

Refer to the exhibit.



Which impact of using three or more ABRs between the backbone area and area 1 is true?

- A. In a large-scale network LSA replication by all ABRs can cause serious scalability issues
- B. Multiple ABRs reduce the CPU processing on each ABR due to splitting prefix advertisement
- C. In a large-scale network multiple ABRs can create microloops.
- D. Prefixes from the non-backbone area are advertised by one ABR to the backbone

Answer: A

NEW QUESTION 211

A business requirement stating that failure of WAN access for dual circuits into an MPLS provider for a Data Centre cannot happen due to related service credits that would need to be paid has led to diversely routed circuits to different points of presence on the providers network? What should a network designer also consider as part of the requirement?

- A. Provision of an additional MPLS provider
- B. Out of band access to the MPLS routers
- C. Ensuring all related remote branches are dual homed to the MPLS network
- D. Dual PSUs & Supervisors on each MPLS router

Answer: A

NEW QUESTION 213

A consultant needs to evaluate project management methodologies for a new service deployment on the existing network of a customer. The customer wants to be involved in the end-to-end project progress and be provided with frequent updates. The customer also wants the ability to change the requirements if needed, as the project progresses. Which project management methodology should be used?

- A. three principles
- B. phased
- C. Agile
- D. Waterfall

Answer: C

NEW QUESTION 218

Company XYZ has implemented policy-based routing in their network. Which potential problem must be kept in mind about network reconvergence and PBR?

- A. It can limit network scalability
- B. It can create microloops during reconvergence
- C. It increases convergence time.
- D. It reduces convergence time.

Answer: B

NEW QUESTION 220

A network engineering team is in the process of designing a lab network for a customer demonstration. The design engineer wants to show that the resiliency of the MPLS traffic Engineering Fast Reroute solution has the same failover/failback times as a traditional SONET/SDH network (around 50MSEC). In order to address both link failure and node failure within the lab typology network, which type of the MPLS TE tunnels must be considered for this demonstration?

- A. TE backup tunnel
- B. Next-hop (NHop) tunnel
- C. FRR Backup tunnel
- D. next-next-hop (NNHop) tunnel

Answer: D

NEW QUESTION 225

Which function is performed at the access layer of the three-layer hierarchical network design model?

- A. fault isolation
- B. QoS classification and marking boundary
- C. reliability
- D. fast transport
- E. redundancy and load balancing

Answer: B

NEW QUESTION 227

In the case of outsourced IT services, the RTO is defined within the SLA. Which two support terms are often included in the SLA by IT and other service providers? (Choose two.)

- A. network size and cost
- B. support availability
- C. network sustainability
- D. network reliability
- E. resolution time

Answer: BE

NEW QUESTION 231

When designing a WAN that will be carrying real-time traffic, what are two important reasons to consider serialization delay? (Choose two)

- A. Serialization delays are invariable because they depend only on the line rate of the interface
- B. Serialization delays are variable because they depend on the line rate of the interface and on the type of the packet being serialized.
- C. Serialization delay is the time required to transmit the packet on the physical media.
- D. Serialization delays are variable because they depend only on the size of the packet being serialized
- E. Serialization delay depends not only on the line rate of the interface but also on the size of the packet

Answer: BD

NEW QUESTION 234

What are two common approaches to analyzing and designing networks? (Choose two.)

- A. bottom-up approach
- B. high-low security approach
- C. top-down approach
- D. left-right approach
- E. three-tier approach

Answer: AC

NEW QUESTION 236

A BGP route reflector in the network is taking longer than expected to coverage during large network changes. Troubleshooting shows that the router cannot handle all the TCP acknowledgements during route updates. Which action can be performed to tune the device performance?

- A. Increase the size of the hold queue.
- B. Increase the size of the large buffers.
- C. Decrease the size of the small buffers.
- D. Increase the keepalive timers for each BGP neighbor.

Answer: A

NEW QUESTION 239

Company XYZ asks for design recommendations for Layer 2 redundancy. The company wants to prioritize fast convergence and resiliency elements. In the design. Which two technologies are recommended? (Choose two.)

- A. Design MLAG/MC-LAG into the network wherever possible.
- B. Configure DHCP snooping on the switches.
- C. Use root guard.
- D. Use BPDU guard.
- E. Use UniDirectional Link Detection.

Answer: AE

NEW QUESTION 244

Company XYZ was not satisfied with the reconvergence time OSPF is taking. BFD was implemented to try to reduce the reconvergence time, but the network is still experiencing delays when having to reconverge. Which technology will improve the design?

- A. OSPF fast hellos
- B. BFD echo
- C. Change the protocol to BGP
- D. Change the OSPF hello and dead intervals

Answer: B

NEW QUESTION 247

An architect designs a multi-controller network architecture with these requirements:

- Achieve fast failover to control traffic when controllers fail.
- Reduce connectivity loss and enable smart recovery to improve the SDN survivability.
- Improve connectivity by adding path diversity and capacity awareness for controllers.

Which control plane component of the multi-controller must be built to meet the requirements?

- A. control node reliability
- B. controller state consistency
- C. control path reliability
- D. controller clustering

Answer: B

NEW QUESTION 250

Hybrid cloud computing allows organizations to take advantage of public and private cloud models. Which best practice should organizations follow to ensure data security in the private cloud?

- A. Use standard protocols for data transmission over the network.
- B. Encrypt data when it is at rest and in motion.
- C. Communicate all data security risks to customers and end users.
- D. Use standard network protocols for data communication between unsecured network connections.

Answer: B

NEW QUESTION 255

Which three tools are used for ongoing monitoring and maintenance of a voice and video environment? (Choose three.)

- A. flow-based analysis to measure bandwidth mix of applications and their flows
- B. call management analysis to identify network convergence-related failures
- C. call management analysis to identify CAC failures and call quality issues
- D. active monitoring via synthetic probes to measure loss, latency, and jitter
- E. passive monitoring via synthetic probes to measure loss, latency, and jitter
- F. flow-based analysis with PTP time-stamping to measure loss, latency, and jitter

Answer: ACD

NEW QUESTION 256

An international media provider is an early adopter of Docker and micro services and is using an open-source homegrown container orchestration system. A few years ago, they migrated from on-premises data centers to the cloud. Now they are faced with challenges related to management of the deployed services with their current homegrown orchestration system.

Which platform is well-suited as a state-aware orchestration system?

- A. Puppet
- B. Kubernetes
- C. Ansible
- D. Terraform

Answer: B

NEW QUESTION 261

Company XYZ is designing their network using the three-layer hierarchical model. At which layer must the QoS design classify or mark the traffic?

- A. access
- B. core
- C. collapsed core
- D. distribution

Answer: A

NEW QUESTION 263

Which action must be taken before new VoIP systems are implemented on a network to ensure that the network is ready to handle the traffic?

- A. Evaluate bandwidth utilization and connection quality
- B. Enable special requirements such as direct DID lines on pickup
- C. Make recommendations to limit the size of the half-open session table on routers
- D. Check if anomaly detection is enabled for SIP and H.323 on Layer 3 devices

Answer: B

NEW QUESTION 268

Which three components are part of the foundational information security principles of the CIA triad? (Choose three.)

- A. cryptography
- B. confidentiality
- C. authorization
- D. identification
- E. integrity
- F. availability

Answer: BEF

NEW QUESTION 269

A service provider hires you to design its new managed CE offering to meet these requirements

- The CEs cannot run a routing protocol with the PE
- Provide the ability for equal or unequal ingress load balancing in dual-homed CE scenarios.
- Provide support for IPv6 customer routes
- Scale up to 250.000 CE devices per customer.
- Provide low operational management to scale customer growth.
- Utilize low-end (inexpensive) routing platforms for CE functionality. Which tunneling technology do you recommend?

- A. FlexVPN
- B. point-to-point GRE
- C. DMVPN
- D. LISP

Answer: D

NEW QUESTION 272

Which optimal use of interface dampening on a fast convergence network design is true?

- A. When occasional flaps of long duration occur
- B. when numerous adjacent flaps of very short duration occur
- C. when the router hardware is slower than the carrier delay down detection
- D. when the switch hardware is faster than the debounce timer down detection

Answer: B

NEW QUESTION 274

The network team in XYZ Corp wants to modernize their infrastructure and is evaluating an implementation and migration plan to allow integration MPLS-based, Layer 2 Ethernet services managed by a service provider to connect branches and remote offices. To decrease OpEx and improve response times when network components fail, XYZ Corp decided to acquire and deploy new routers. The network currently is operated over E1 leased lines (2 Mbps) with a managed CE service provided by the telco.

Drag and drop the implementation steps from the left onto the corresponding targets on the right in the correct order.

Activation of the MPLS-based L2VPN service.	Step 1
Monitor performance of the Ethernet service for a predefined period of time.	Step 2
Decomission E1 leased line.	Step 3
Deployment of new branch routers.	Step 4
Test and validation of SLA parameters in the L2VPN.	Step 5
Migrate E1 to the new Ethernet service.	Step 6

- A. Mastered
- B. Not Mastered

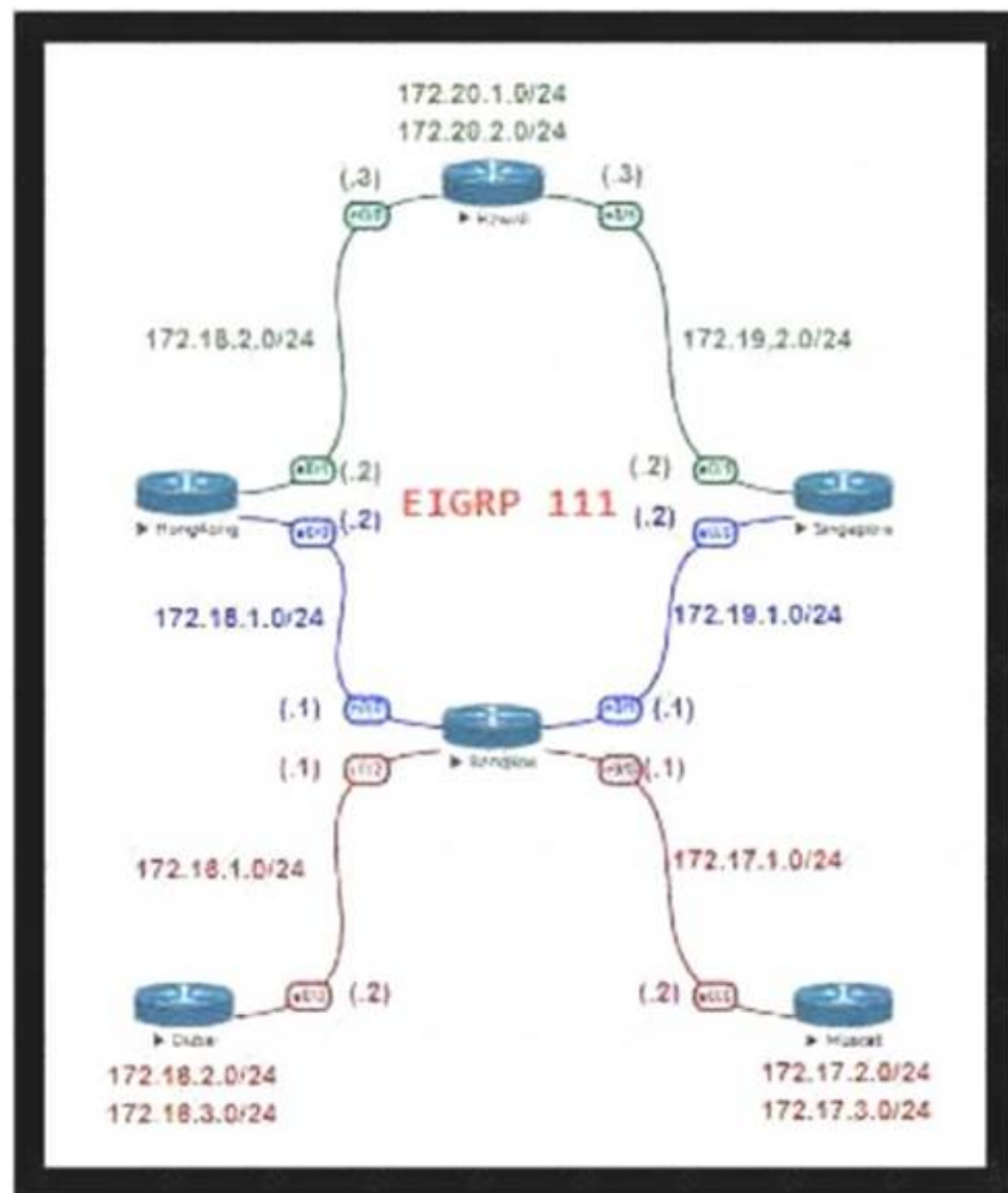
Answer: A

Explanation:

Table Description automatically generated

NEW QUESTION 276

Refer to the exhibit.



For Company XYZ Bangkok is using ECMP to reach the 172.20.2.0/24 network. The company wants a design that would allow them to forward traffic from 172.16.2.0/24 toward 172.20.2.0/24 via the Singapore router as the preferred route. The rest of the traffic should continue to use ECMP. Which technology fulfills this design requirement?

- A. policy-based routing
- B. route summarization
- C. unequal-cost load balancing using variance
- D. LFA

Answer: A

NEW QUESTION 278

Router R1 is a BGP speaker with one peering neighbor over link "A". When the R1 link/interface "A" fails, routing announcements are terminated, which results in the tearing down of the state for all BGP routes at each end of the link. What is this a good example of?

- A. fault isolation
- B. resiliency
- C. redundancy
- D. fate sharing

Answer: D

NEW QUESTION 280

What are two key design principles when using a hierarchical core-distribution-access network model? (Choose two)

- A. A hierarchical network design model aids fault isolation
- B. The core layer is designed first, followed by the distribution layer and then the access layer
- C. The core layer provides server access in a small campus.
- D. A hierarchical network design facilitates changes
- E. The core layer controls access to resources for security

Answer: AD

NEW QUESTION 281

Which two aspects are considered when designing a dual hub dual DMVPN cloud topology? (Choose two)

- A. will only work with single-tier headend architecture
- B. hub sites must connect to both DMVPN clouds

- C. recommended for high availability
- D. spoke-to-spoke traffic will transit the hub unless spokes exchange dynamic routing directly
- E. requires all sites to have dual Internet connections

Answer: AC

NEW QUESTION 285

An existing wireless network was designed to support data traffic only. You must now install context Aware services for location tracking changes must be applied to the existing wireless network to increase the location accuracy? (Chose two)

- A. Add access points along the perimeter of the coverage area.
- B. Increase the access point density to create an average inter-access point distance of less than 40 feet or 12.2 meters
- C. Use directional antennas to provide more cell overlapping
- D. Install additional access points in monitor mode where the co-channel interference would otherwise be affected
- E. Fine tune the radio configuration of the access point to have a higher average transmission power to achieve better coverage

Answer: BE

NEW QUESTION 288

When an SDN-based model is used to transmit multimedia traffic, which aspect should an architect consider while designing the network?

- A. QoE estimation
- B. security
- C. traffic patterns
- D. flow forwarding

Answer: A

NEW QUESTION 289

Your company wants to deploy a new data center infrastructure Based on the requirements you have chosen VXLAN as encapsulation technology The customer is concerned about miss-configuration of Layer 2 devices and DC wide outages caused by Layer 2 loops What do you answer?

- A. VXLAN offers native loop avoidance mechanism
- B. Storm Control should be enabled on all ports
- C. VPC+ could prevent L2 loop on access ports
- D. BPDU Guard should be enabled on all VTEP access ports

Answer: D

NEW QUESTION 291

Which effect of using ingress filtering to prevent spoofed addresses on a network design is true?

- A. It reduces the effectiveness of DDoS attacks when associated with DSCP remarking to Scavenger.
- B. It protects the network Infrastructure against spoofed DDoS attacks.
- C. It Classifies bogus traffic and remarks it with DSCP bulk.
- D. It filters RFC 1918 IP addresses.

Answer: B

NEW QUESTION 296

Company XYZ has a new network based on IPv6. Some of the subnets that they are planning to use will be confidential and need an addressing scheme that confines them to the local campus network. Which type of IPv6 addresses can be used for these networks in the IPv6 addressing design?

- A. local addresses
- B. private addresses
- C. link-local addresses
- D. unique local addresses

Answer: D

NEW QUESTION 297

Organizations that embrace Zero Trust initiatives ranging from business policies to technology infrastructure can reap business and security benefits. Which two domains should be covered under Zero Trust initiatives? (Choose two)

- A. workload
- B. work domain
- C. workplace
- D. workgroup
- E. workspace

Answer: AC

NEW QUESTION 298

Which mechanism enables small, unmanaged switches to plug into ports of access switches without risking switch loops?

- A. PortFast
- B. UDLD
- C. Root guard
- D. BPDU guard

Answer: D

NEW QUESTION 303

You are designing a network running both IPv4 and IPv6 to deploy QoS Which consideration is correct about the QoS for IPv4 and IPv6?

- A. IPv4 and IPv6 traffic types can use queuing mechanisms such as LLQ, PQ and CQ.
- B. IPv6 packet classification is only available with process switching, whereas IPv4 packet classification is available with both process switching and CEF.
- C. IPv6 and IPv4 traffic types can use a single QoS policy to match both protocols
- D. Different congestion management mechanisms need to be used for IPv4 and IPv6 traffic types

Answer: C

NEW QUESTION 305

An enterprise campus is adopting a network virtualization design solution with these requirements

- It must include the ability to virtualize the data plane and control plane by using VLANs and VRFs
- It must maintain end-to-end logical path transport separation across the network
- resources available grouped at the access edge

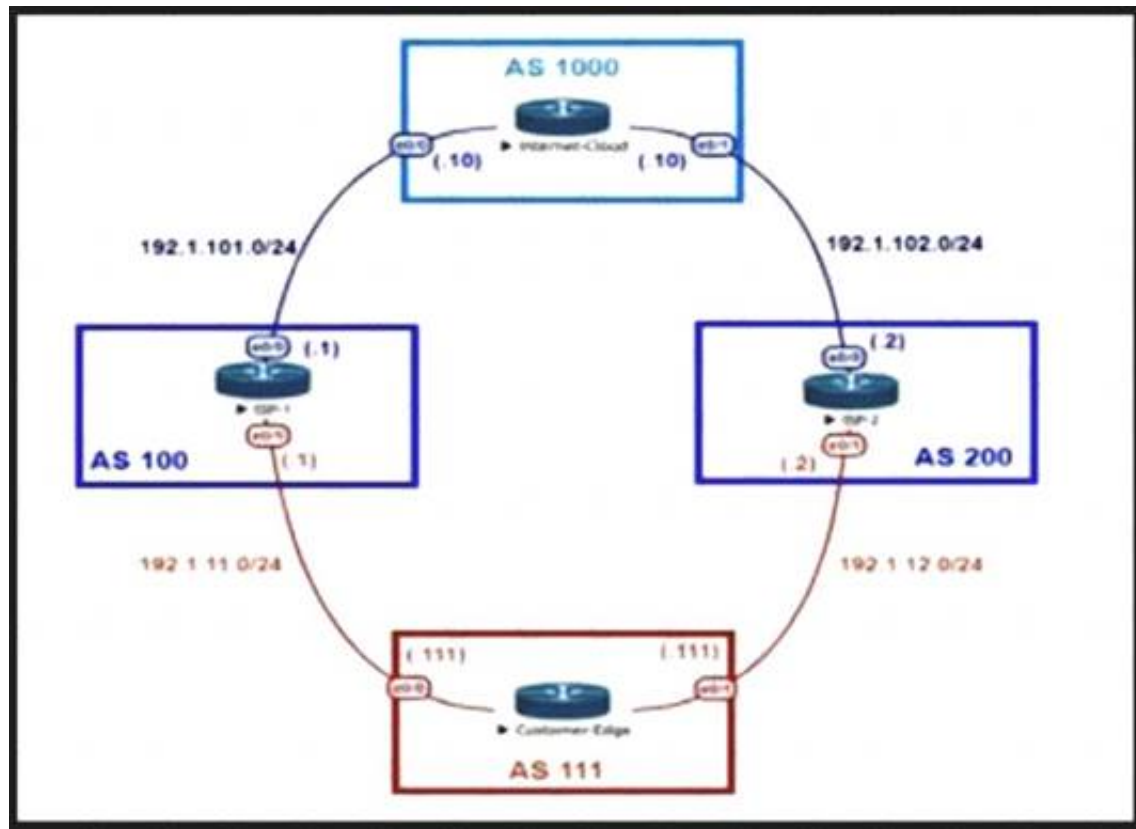
Which two primary models can this network virtualization design be categorized? (Choose two)

- A. Path isolation
- B. Session isolation
- C. Group virtualization
- D. Services virtualization
- E. Edge isolation

Answer: AD

NEW QUESTION 306

Refer to the exhibit.



An engineer is designing the traffic flow for AS 111. Traffic from AS 111 should be preferred via AS 100 for all external routes. A method must be used that only affects AS 111. Which BGP attributes are best suited to control outbound traffic?

- A. community
- B. MED
- C. local preference
- D. As path

Answer: C

NEW QUESTION 310

An external edge router provides connectivity from a service provider to an enterprise Which two Internet edge best practices meet compliance regulations'? (Choose two)

- A. Implement filtering to control traffic that is sourced from the infrastructure IP space.
- B. Enable and use only secure protocols.
- C. Send logs to a centralized logging collection server.
- D. Implement EBGP to advertise all owned IP blocks.
- E. Use login banners and interface access lists to restrict administrative access to the system

Answer: BE

NEW QUESTION 311

A Tier-3 Service Provider is evolving into a Tier-2 Service Provider due to the amount of Enterprise business it is receiving. The network engineers are re-evaluating their IP/MPLS design considerations in order to support duplicate/overlapping IP addressing from their Enterprise customers within each Layer3 VPN. Which concept would need to be reviewed to ensure stability in their network?

- A. Assigning unique Route Distinguishers
- B. Assigning unique Route Target ID'S
- C. Assigning unique IP address space for the Enterprise NAT/Firewalls
- D. Assigning unique VRF ID's to each L3VPN

Answer: A

NEW QUESTION 315

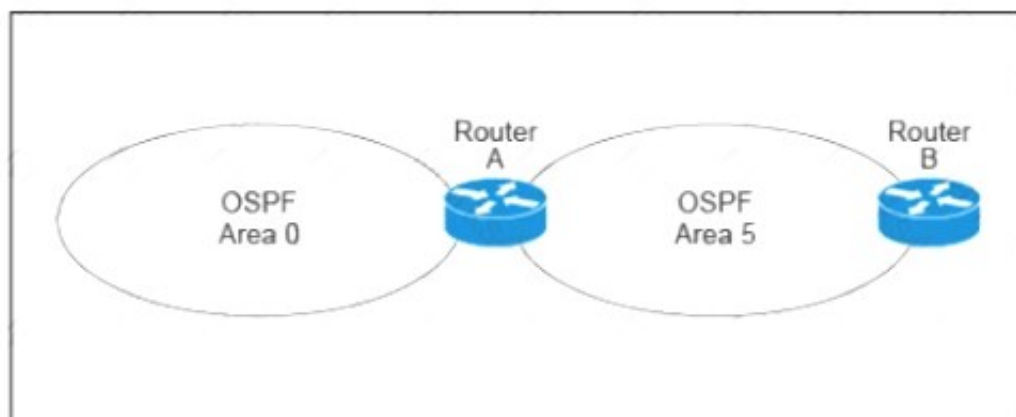
Identity and access management between multiple users and multiple applications has become a mandatory requirement for Company XYZ to fight against ever increasing cybersecurity threats. To achieve this, federated identity services have been deployed in the Company XYZ network to provide single sign-on and Multi-Factor Authentication for the applications and services. Which protocol can be used by Company XYZ to provide authentication and authorization services?

- A. OAuth2
- B. OpenID Connect
- C. OpenID
- D. SAML2.0

Answer: D

NEW QUESTION 317

Refer to the exhibit.



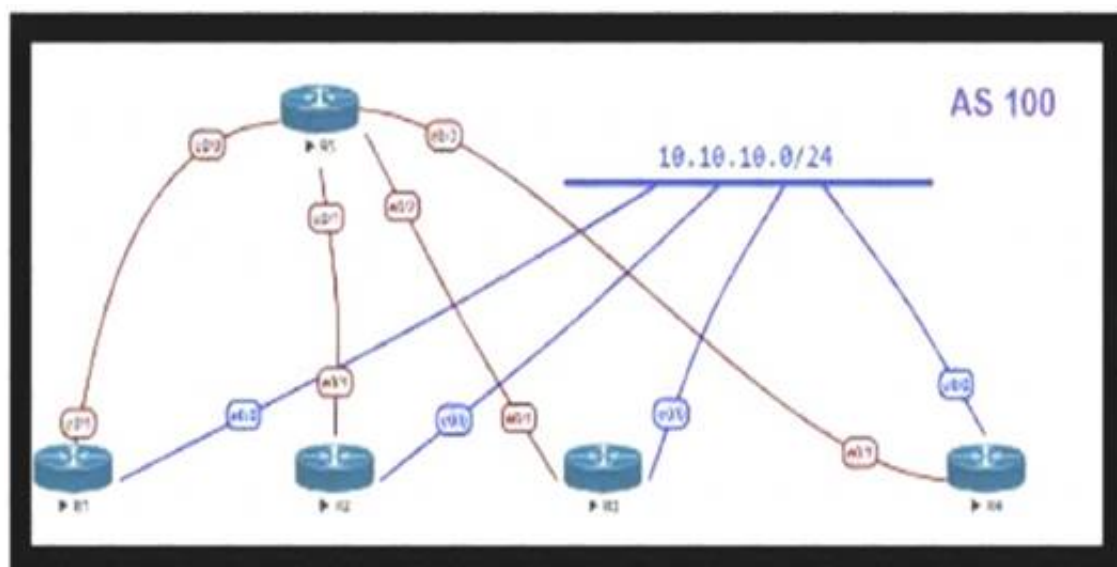
A customer runs OSPF with Area 5 between its aggregation router and an internal router. When a network change occurs in the backbone, Area 5 starts having connectivity issues due to the SPF algorithm recalculating an abnormal number of times in Area 5. You are tasked to redesign this network to increase resiliency on the customer network with the caveat that Router B does not support the stub area. How can you accomplish this task*?

- A. Increase the bandwidth on the connection between Router A and Router B
- B. Implement LSA filtering on the ABR, allowing summary routes and preventing more specific routes into Area 5
- C. Create a virtual link to Area 0 from Router B to the ABR
- D. Turn on LSA throttling on all devices in Area 5
- E. Set Area 5 to stubby at the ABR anyway

Answer: B

NEW QUESTION 319

Refer to the exhibit.



OSPF is running as the IGP to provide reachability to all AS100 networks. R3 and R4 are the current ABRs at the boundary of OSPF Area 0 and Area 1. Now BGP must be deployed within AS 100 because it will be receiving Internet routes from its eBGP peers (the service provider) connected to R1 and R2. What is an optimal solution for this deployment to configure BGP relationships and redistribute BGP learned routes into OSPF?

- A. R5 should be configured as a route reflector for R1, R2, R3, and R4. BGP routes must be redistributed at R1 and R2 into OSPF.
- B. Configuration should be set up with R1 and R2, and R3 in one sub-AS, with R4 in another, and redistribution at R1 and R2.
- C. A full mesh should be deployed between all the routers with mutual redistribution to take place at R1 and R2.

D. R1, R2, R3 and R4 must be set up with a neighbor relationship with R5 only must not be a route reflector.

Answer: C

NEW QUESTION 320

An enterprise plans to evolve from a traditional WAN network to a software-defined WAN network. The existing devices have limited capability when it comes to virtualization. As the migration is carried out, enterprise applications and services must not experience any traffic impact. Which implementation plan can be used to accommodate this during the migration phase?

- A. Deploy controllers, deploy SD-WAN edge router
- B. In the data center, and migrate branch sites.
- C. Migrate data center WAN routers, migrate branch sites, and deploy SD-WAN edge routers.
- D. Migrate branch sites, migrate data center WAN routers, and deploy controllers.
- E. Deploy SD-WAN edge routers in the data center, deploy controllers, and migrate branch sites

Answer: A

NEW QUESTION 323

Company XYZ runs OSPF in their network. A design engineer decides to implement hot-potato routing architecture. How can this implementation be achieved?

- A. Enable iBGP and apply prepend to ensure all prefixes will have the same length of the AS path attribute value.
- B. Redistribute the external prefixes onto OSPF and ensure the total metric calculation includes only the ext value and the value is the same in all ASBRs.
- C. Enable OSPF load-balancing over unequal cost path.
- D. Redistribute the external prefixes onto OSPF and ensure that the total metric calculation includes external internal values.

Answer: D

NEW QUESTION 324

Which feature must be part of the network design to wait a predetermined amount of time before notifying the routing protocol of a change in the path in the network?

- A. Transmit delay
- B. Throttle timer
- C. SPF hold time
- D. Interface dampening

Answer: B

NEW QUESTION 325

The controller has a global view of the network, and it can easily ensure that the network is in a consistent and optimal configuration. Which two statements describe a centralized SDN control path? (Choose two.)

- A. Scaling of the centralized controller cluster is challenging for services like DHCP and load-balancing.
- B. It is highly-available by design with no single-point-of-failure risks present.
- C. Integrating smart NIC capabilities on the local host level is made easier through rest APIs.
- D. It significantly improves the latency when performing reactive handling of PACKET_IN events.
- E. It centralized controller can support all southbound APIs, which allows for easy integration with legacy equipment.

Answer: AE

NEW QUESTION 330

SDN emerged as a technology trend that attracted many industries to move from traditional networks to SDN. Which challenge is solved by SDN for cloud service providers?

- A. need for intelligent traffic monitoring
- B. exponential growth of resource-intensive application
- C. complex and distributed management flow
- D. higher operating expense and capital expenditure

Answer: B

NEW QUESTION 332

If the desire is to connect virtual network functions together to accommodate different types of network service connectivity what must be deployed?

- A. bridging
- B. service chaining
- C. linking
- D. daisy chaining
- E. switching

Answer: B

Explanation:

Service chaining is the technique of connecting virtual network functions together to provide different types of network service connectivity. Service chaining uses software-defined networking (SDN) programmability to create a chain of connected network services, such as firewalls, load balancers, NAT, and intrusion protection. Service chaining can automate the provisioning of network applications that have different characteristics and requirements, such as security, latency,

or quality of service (QoS). Service chaining can also optimize the use of network resources and improve application performance by using SDN analytics and performance tools to select the best available network paths and avoid network congestion. Service chaining is being used in many SDN and network functions virtualization (NFV) use cases and deployments, such as data centers, carrier networks, and virtual customer edge123. References:

- 1: What is Network Service Chaining or Service Function Chaining - SDxCentral
- 2: On service chaining using Virtual Network Functions in Network-enabled Cloud systems | IEEE Conference Publication | IEEE Xplore
- 3: Service function chaining - Gini5

NEW QUESTION 337

Company XYZ is running OSPF in their network. They have merged with another company that is running EIGRP as the routing protocol. Company XYZ now needs the two domains to talk to each other with redundancy, while maintaining a loop free environment. The solution must scale when new networks are added into the network in the near future. Which technology can be used to meet these requirements?

- A. multipoint route-redistribution with route filtering using ACLs
- B. DUMP multipoint route-redistribution with route filtering using route tags
- C. DUMPS single point route-redistribution with route filtering using route tags
- D. DUMPS single point route-redistribution with route filtering using ACLs

Answer: B

NEW QUESTION 342

Company XYZ is migrating their existing network to IPv6 and they must plan for Layer 2 and Layer 3 devices Some of the access layer switches do not support IPv6, however, core and distribution switches fully support unicast and multicast routing. The company wants to minimize cost of the migration. Which migration strategy should be used in the design?

- A. The access layer switches must support IGMP snooping at a minimum
- B. Any switches that do not support IGM snooping must be replaced.
- C. Upgrade the nonsupporting switches Otherwise, it will cause an issue with the migration.
- D. Layer 2 switches will not affect the implementation of IPv6. They can be included in the design in their current state.
- E. The access layer switches must support DHCPv6. Any switches that do not support DHCPv6 must be replaced.

Answer: C

NEW QUESTION 347

Refer to the table.

CONNECTIVITY	CAPEX	OPEX ANNUAL	INSTALLATION FEE	TERM
DWDM over dark fiber	\$250,000	\$100,000	\$30,000	60 months
CWDM over dark fiber	\$150,000	\$100,000	\$25,000	60 months
MPLS	\$50,000	\$150,000	\$75,000	12 months
Metro Ethernet	\$45,000	\$125,000	\$5,000	36 months

A customer investigates connectivity options for a DCI between two production data centers. The solution must provide dual 10G connections between locations with no single points of failure for Day 1 operations. It must also include an option to scale for up to 20 resilient connections in the second year to accommodate isolated SAN over IP and isolated, dedicated replication IP circuits. All connectivity methods are duplex 10 Gbps. Which transport technology costs the least over two years, in the scenario?

- A. Metro Ethernet
- B. DWDM
- C. CWDM
- D. MPLS

Answer: B

NEW QUESTION 349

A small organization of 20 employees is looking to deliver a network design service for modernizing customer networks to support advanced solutions.

- Project scope and weekly progress should be visualized by the management.
- Always consider feedback and make changes accordingly during the project.
- Should consider flexibility to change scope at the point of time.

Which project methodology meets the requirements and have the least impact on the outcome?

- A. Scrum
- B. LEAN
- C. Kanban
- D. Six-Sigma

Answer: A

Explanation:

<https://firebrand.training/uk/blog/scrum-vs-six-sigma-which-one-is-right-for-you>

NEW QUESTION 353

Which two types of planning approaches are used to develop business-driven network designs and to facilitate the design decisions? (Choose two)

- A. cost optimization approach

- B. strategic planning approach
- C. modular approach
- D. tactical planning approach
- E. business optimization approach

Answer: BD

NEW QUESTION 355

You are tasked with the design of a high available network. Which two features provide fail closed environments? (Choose two.)

- A. EIGRP
- B. RPVST+
- C. MST
- D. L2MP

Answer: AB

NEW QUESTION 358

The Company XYZ network is experiencing attacks against their router. Which type of Control Plane Protection must be used on the router to protect all control plane IP traffic that is destined directly for one of the router interfaces?

- A. Control Plane Protection host subinterface
- B. Control Plane Protection main interface
- C. Control Plane Protection transit subinterface
- D. Control Plane Protection CEF-exception subinterface

Answer: A

NEW QUESTION 363

Drag and drop the optical technology design characteristics on the left to the correct optical technologies on the right. Not all options are used

suited for short-haul and long-haul distances	CWDM (Coarse Wavelength Division Multiplexing)	target 1
number of channels can be 40 or more		target 2
large channel spacing (2500 GHz)		target 3
small channel spacing (100 or 50 GHz)	DWDM (Dense Wavelength Division Multiplexing)	target 4
suited for short-haul, typically limited to Metropolitan networks		target 5
maximum of 16 channels		target 6
only suitable for ring or dual-ring topology		

- A. Mastered
- B. Not Mastered

Answer: A

Explanation:

- 1 - target 4
- 2 - target 5
- 3 - target 1
- 4 - target 6
- 5 - target 2
- 6 - target 3

NEW QUESTION 367

The General Bank of Greece plans to upgrade its legacy end-of-life WAN network with a new flexible, manageable, and scalable solution. The main requirements are ZTP support, end-to-end encryption application awareness and segmentation. The CTO states that the main goal of the bank is CAPEX reduction. Which WAN technology should be used for the solution?

- A. SD-branch
- B. DMVPN with PfR
- C. managed SD-WAN
- D. SD-WAN

Answer: C

NEW QUESTION 368

.....

THANKS FOR TRYING THE DEMO OF OUR PRODUCT

Visit Our Site to Purchase the Full Set of Actual 400-007 Exam Questions With Answers.

We Also Provide Practice Exam Software That Simulates Real Exam Environment And Has Many Self-Assessment Features. Order the 400-007 Product From:

<https://www.2passeasy.com/dumps/400-007/>

Money Back Guarantee

400-007 Practice Exam Features:

- * 400-007 Questions and Answers Updated Frequently
- * 400-007 Practice Questions Verified by Expert Senior Certified Staff
- * 400-007 Most Realistic Questions that Guarantee you a Pass on Your FirstTry
- * 400-007 Practice Test Questions in Multiple Choice Formats and Updatesfor 1 Year