

HP

Exam Questions HPE6-A72

Aruba Certified Switching Associate Exam



NEW QUESTION 1

Refer to the exhibit.

```
Access-1# debug l2mac event
Access-1# debug destination buffer
Access-1# page
```

```
show debug buffer
-----
2020-05-06:22:32:52. 601427|12mac-mgrd|LOG_DEBUG|AMM|-|L2MAC|L2MAC_EVENT|macmgr_m
ac_manager_handle_mac_event(1311), MAC=00:50:79:66:68:01, VLAN=1, Port=1/1/1 is
trying to be inserted
2020-05-06:22:32:52. 602027|12mac-mgrd|LOG_DEBUG|AMM|-|L2MAC|L2MAC_EVENT|macmgr_m
ac_manager_handle_mac_event(1328), MAC=00:50:79:66:68:01 was successfully inserted
```

What command will display the debug l2mac events?

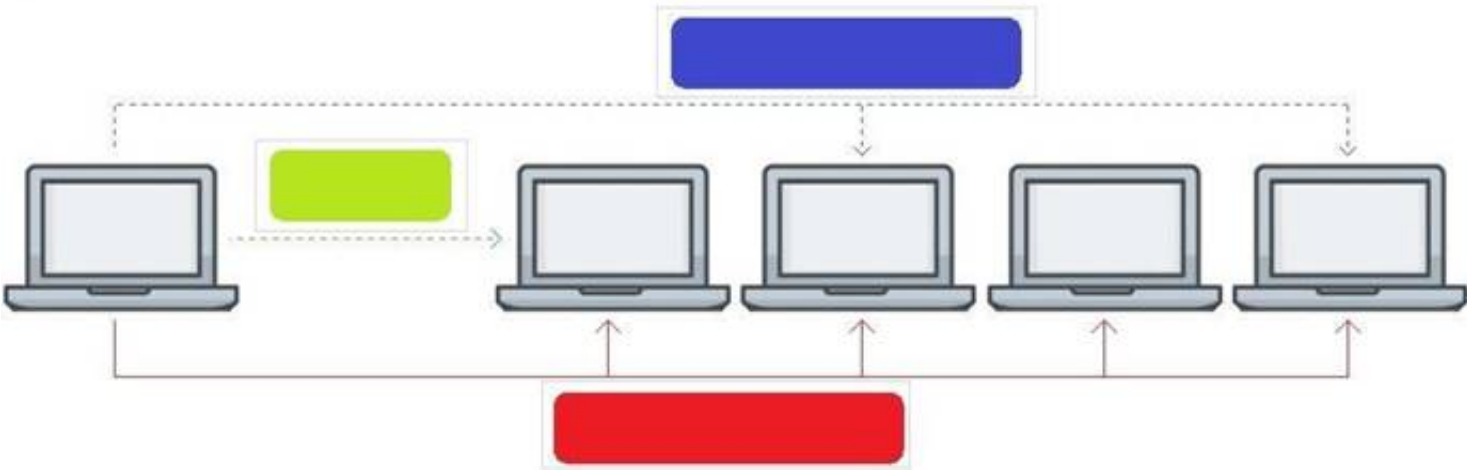
- A. show module L2MAC
- B. show debug terminal
- C. show debug buffer module L2MAC
- D. show debug all

Answer: C

NEW QUESTION 2

Click on the colored box that corresponds with the line that best represents Multicast traffic flow.

Answer Area



- A. Mastered
- B. Not Mastered

Answer: A

Explanation:

Diagram Description automatically generated
Blue Box

NEW QUESTION 3

Match the term to the correct description.

Term	Description
BGP	used for creating backup routes by implementing a higher administrative distance
Floating Static Routes	a distance vector protocol
OSPFv2	an ipv4 link-state routing protocol that runs within an Autonomous System
OSPFv3	used to route traffic between Autonomous Systems
RIPv2	a routing protocol capable of routing IPv6 packets

- A. Mastered
- B. Not Mastered

Answer: A

Explanation:

Term		Description
BGP	Floating Static Routes	used for creating backup routes by implementing a higher administrative distance
Floating Static Routes	RIPv2	a distance vector protocol
OSPFv2	OSPFv2	an ipv4 link-state routing protocol that runs within an Autonomous System
OSPFv3	BGP	used to route traffic between Autonomous Systems
RIPv2	OSPFv3	a routing protocol capable of routing IPv6 packets

NEW QUESTION 4

What is the process where a compute device converts logical data bits into the correct physical representation depending on the media?

- A. Demodulation
- B. Modulation
- C. Propagation
- D. Encapsulation

Answer: D

NEW QUESTION 5

What is the login and password combination is used when first configuring an Aruba OS-CX switch from factory defaults?

- A. Login admin and password field empty.
- B. Login admin and password forgetme!
- C. Login admin and password password.

Answer: B

NEW QUESTION 6

What is the binary conversion of the hexadecimal value 0x2001?

- A. 0010 0001
- B. 0002 0000 0000 0001
- C. 0011 0000 0000 0001
- D. 0010 0000 0000 0001

Answer: D

NEW QUESTION 7

Which two statements accurately describe the features of NetEdit? (Choose two.)

- A. NetEdit can be used to configure and validate any third-party device that supports SSH and REST access.
- B. NetEdit includes trial licensing for up to 10 nodes.
- C. NetEdit can perform configuration and compliance validation.
- D. NetEdit supports viewing and editing multiple devices using a single deployment plan.
- E. NetEdit can run on a mobile device using Android or Apple IOS.

Answer: CD

NEW QUESTION 8

Which two options are correct regarding the IEEE 802.11ax standard? (Choose two.)

- A. allows transmissions of up to 4.8Gbps
- B. is an emerging satellite connection standard to allow wireless access anywhere in the world
- C. operates only in the 5GHz similar to 802.11ac
- D. operates in both the 2.4GHz and 5GHz radios bands
- E. is the first WLAN standard to no longer use electromagnetic signals to transmit data

Answer: AD

NEW QUESTION 9

Which two types of routes can be found in the IP routing table of an Aruba AOS-CX switch? (Choose two.)

- A. Local
- B. EIGRP
- C. BGP
- D. ISIS
- E. RIPvng

Answer: AC

NEW QUESTION 10

Which command can be used to find the serial number of an Aruba OS-CX switch?

- A. The command inventory
- B. The command version
- C. The command show running-configuration
- D. The command show system

Answer: D

NEW QUESTION 10

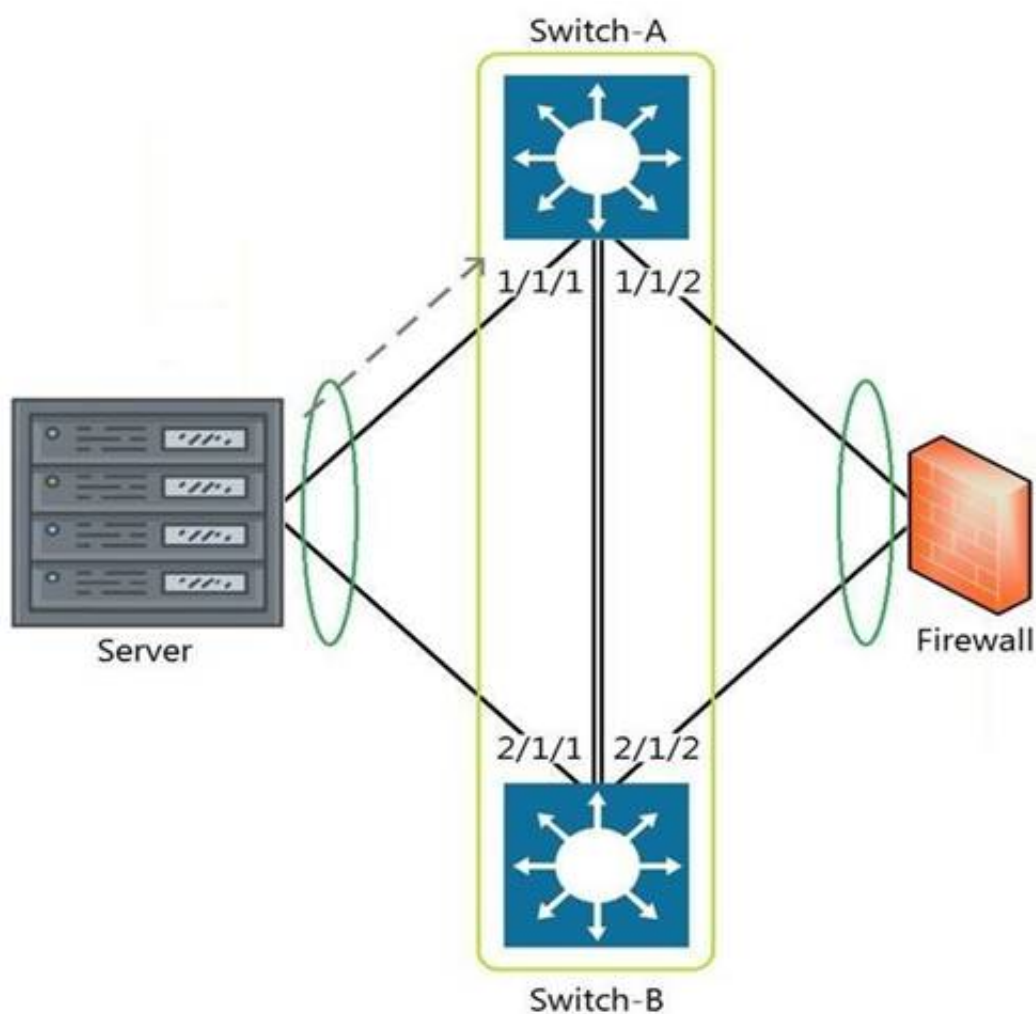
What are two OSPF attributes within the hello messages that must match to successfully establish neighbor relationships? (Choose two.)

- A. Router ID
- B. Priority
- C. Hello and Dead intervals
- D. Area ID
- E. Process ID

Answer: CD

NEW QUESTION 11

Refer to the exhibit.



The above scenario shows a packet from the Server destined for the Firewall. Switch-A and Switch-B are bundled as VSF stack. The LAG between the VSF stack and the firewall indicates a hash function to forward the packet on port 2/1/2.

Which statement is true regarding how Switch-A will forward the packet?

- A. Switch-A will forward the packet on port 1/1/2. VSF will override the typical LAG hash function used for the physical interface selection.
- B. Switch-A will drop the packet
- C. Multi-Chassis lag to multi-chassis lag is not a supported feature of VSF.
- D. Switch-A will encapsulate the packet using GRE to forward to Switch-B in order for the packet to egress on port 2/1/2 per the hash function.
- E. Switch-A will forward the packet along the VSF link to Switch-B so that it will egress on port 2/1/2 per the hash function.

Answer: D

NEW QUESTION 12

Refer to the exhibit.

```
watchlog/3      0      0      0
dbus-daemon     0      0      15
intfd           0      0      11
ext4-rsv-conver 0      0      0
scsi_eh_6       0      0      0
cpuhp/3         0      0      0
kworker/4:0     0      0      0
scsi_tmf_4      0      0      0
kworker/5:1H    0      0      0
smartd          0      0      3
fault-handlerd  0      0      10
btd             0      0      12
portd           0      0      12
migration/4     0      0      0
scsi_tmf_1      0      0      0
kworker/2:0H    0      0      0
kauditd         0      0      0
rmond           0      0      9
certmgr         0      0      13
icmp6_unreachab 0      0      0
Core-1#
```

The above output is the result of issuing the command show system resource-utilization. What command should be used to enable terminal output line by line or page by page?

- A. The command page
- B. The command terminal length 30
- C. The command more
- D. The command less

Answer: A

NEW QUESTION 16

What are two primary concerns regarding layer two loops in a redundant topology? (Choose two.)

- A. routing loops
- B. costs associated with upgrading from copper to fiber
- C. multiple frame copies leading to instability of the MAC address table
- D. security issues with a redundant loop indicating to hackers that a back-door exists
- E. broadcast storms

Answer: CD

NEW QUESTION 20

With what other technology does Half Duplex communication closely match?

- A. a pair of fiber optic strands allowing transmit on one and receive on the other at the same time
- B. a mobile phone call
- C. point-to-point connections between two switches allowing concurrent transmit and receive
- D. CB radio using push-to-talk

Answer: D

NEW QUESTION 22

Your customer has 349 users in a two-story building. What are two benefits of a 2-Tier design? (Choose two.)

- A. Layer 2 and Layer 3 protocols run close to the endpoints to better implement ACL and QoS policy at the edge.
- B. Improved performance by offloading processing from the Access layer to the Core.
- C. Use of layer 2 switches at the access layer can process and route traffic from attached APs.
- D. Support for WAN/MPLS, Internet, and Data Center directly on the Collapsed core.
- E. Provides a more cost effective solution given that no additional switches are required for a third tier.

Answer: AE

NEW QUESTION 23

What is a benefit of choosing a 3-Tier design with routing at the Aggregation layer?

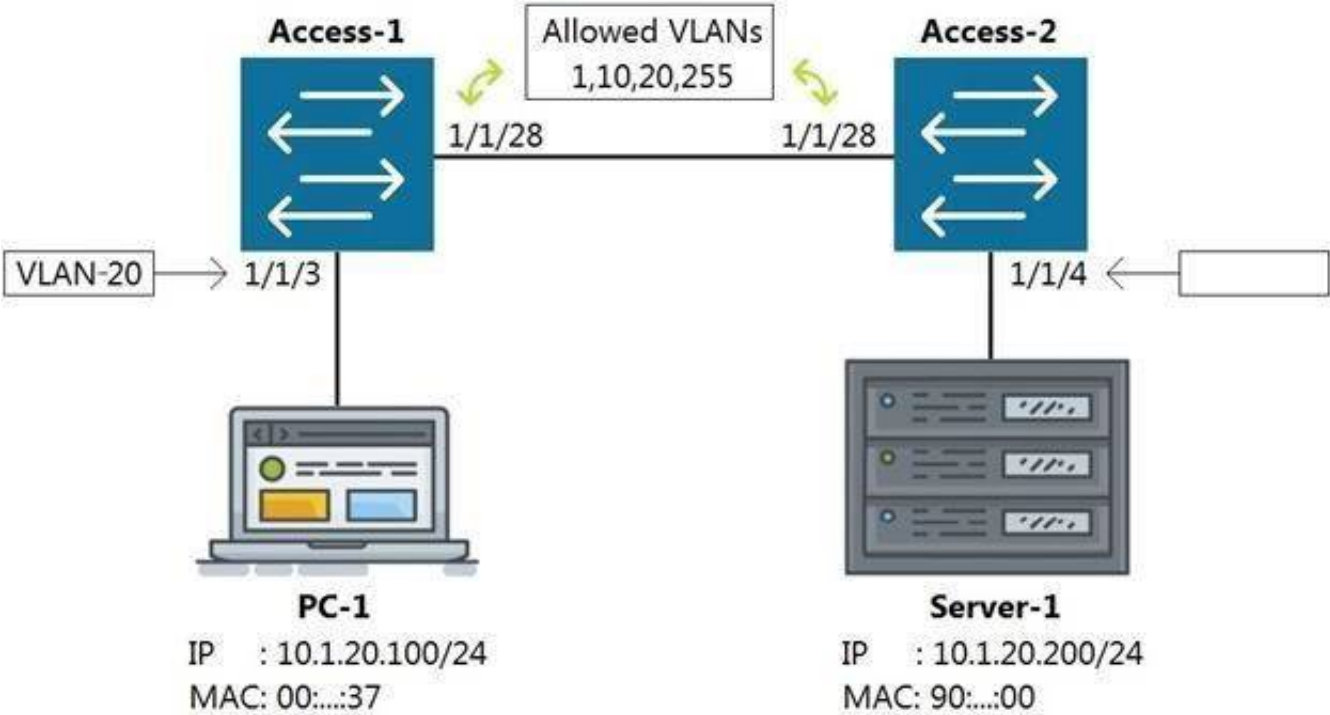
- A. Better Core router performance by offloading processing
- B. Shifting endpoint access to the Aggregation layer from the Access layer

- C. Using access control lists (ACLs) at the Core to improve performance
- D. Connecting WAN/MPLS and Data center access to the Aggregation layer

Answer: A

NEW QUESTION 25

Refer to the exhibit



Which command on Access-2 port 1/1/4 will enable connectivity between PC-1 and Server-1 without any routing enabled in the network?

- A. Access-2 (config-if-1/1/4)# vlan access 1, 10, 20, 255
- B. Access-2 (config-if-1/1/4)# vlan access 20
- C. Access-2 (config-if-1/1/4)# vlan 20 untag 1/1/4
- D. Access-2 (config-if-1/1/4)# vlan trunk allow 1, 10, 255

Answer: B

NEW QUESTION 27

Match each description to the correct management tool for Aruba AOS-CX.

Management Tools	Answer Area	
NetEdit	Management Tool	Description
Aruba CX Mobile App		can run as an OVA
		requires AOS-CX switches to support HTTPS, SSH, and REST access
		connects to switches via Bluetooth or Wi-Fi
		includes a feature for stacking automation
		supports SNMPv2c to discover third-party devices

- A. Mastered
- B. Not Mastered

Answer: A

Explanation:

Management Tools	Answer Area	
NetEdit	Management Tool	Description
Aruba CX Mobile App	NetEdit	can run as an OVA
	NetEdit	requires AOS-CX switches to support HTTPS, SSH, and REST access
	Aruba CX Mobile App	connects to switches via Bluetooth or Wi-Fi
	Aruba CX Mobile App	includes a feature for stacking automation
	NetEdit	supports SNMPv2c to discover third-party devices

NEW QUESTION 29

Refer to the exhibit.



You are in the process of configuring VSF between Access-1 and Access-2. Access-1 has been configured as the VSF Master. What is a valid configuration for Access-2 to join the VSF stack?

- A. Access-2# configureAccess-2(config)# vsf member 1 Access-2(config)# vsf renumber-to 2 Access-2(vsf-member-1)# link 2 2/1/28 Access-2(vsf-member-1)# exitThis will save the VSF configuration and reboot the switch
- B. Do you want to continue (y/n)? y
- C. Access-2# configureAccess-2(config)# vsf member 2 Access-2(vsf-member-1)# link 2 1/1/28 Access-2(vsf-member-1)# exit This will save the VSF configuration and reboot the switch
- D. Do you want to continue (y/n)? y
- E. Access-2# configureAccess-2(config)# vsf member 2 Access-2(vsf-member-1)# link 1 1/1/28 Access-2(vsf-member-1)# exit This will save the VSF configuration and reboot the switch
- F. Do you want to continue (y/n)? y
- G. Access-2# configureAccess-2(config)# vsf member 1 Access-2(vsf-member-1)# link 1 1/1/28 Access-2(vsf-member-1)# exit Access-2(config)# vsf renumber-to 2This will save the VSF configuration and reboot the switch
- H. Do you want to continue (y/n)? y

Answer: C

NEW QUESTION 34

What are two mechanisms supported on AOS-CX 6300 switches used in Multi-active Detection to determine the status of the Primary member? (Choose two.)

- A. Management interface split detection
- B. Peer switch-based detection
- C. Loopback keepalives
- D. ARP-based
- E. BFD

Answer: AD

NEW QUESTION 37

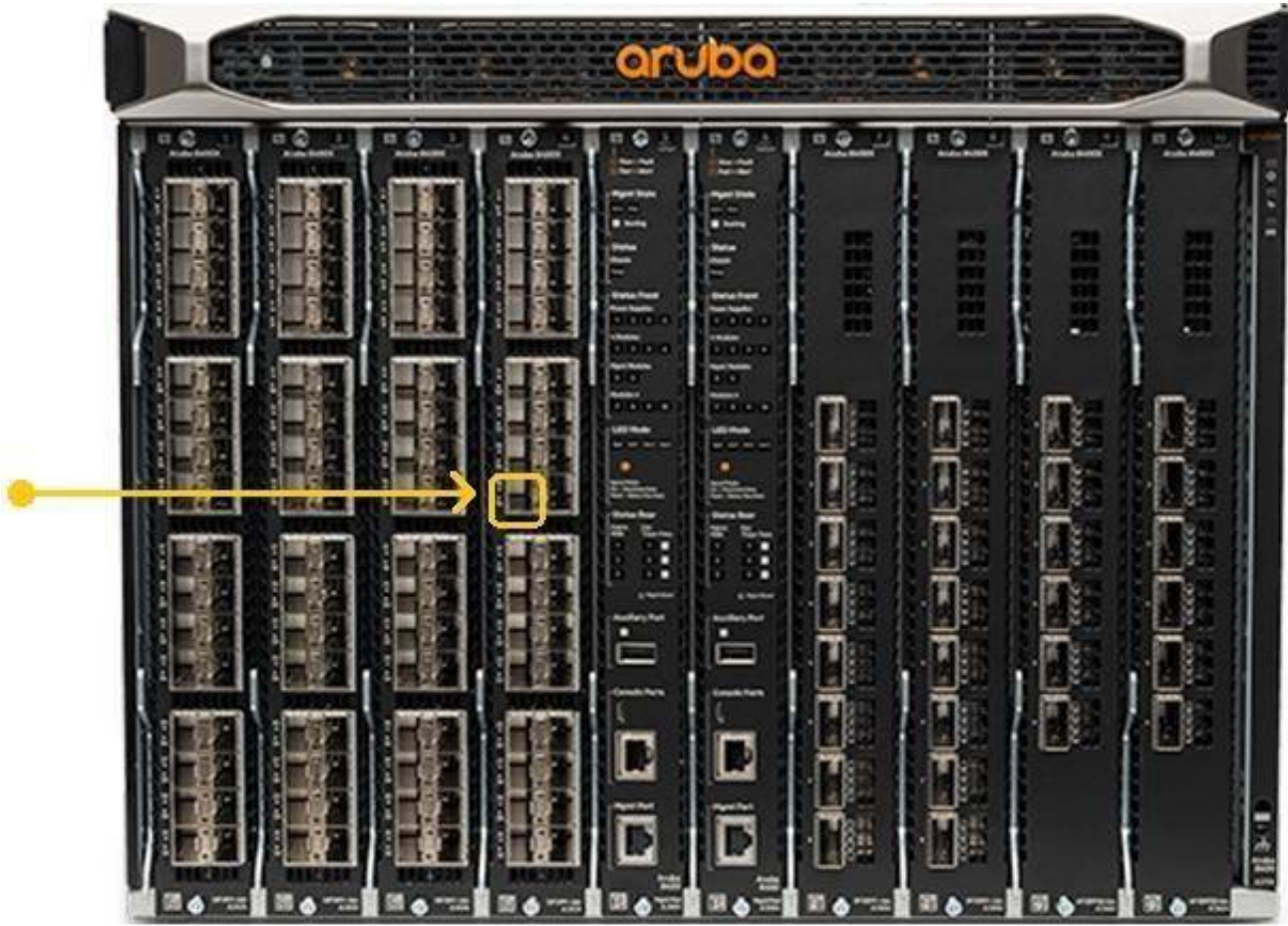
Aruba Access Points tunnel traffic in a campus to the Mobility Controller using which protocol?

- A. Control and Provisioning of Wireless Access Points (CAPWAP)
- B. Generic Routing Encapsulation (GRE)
- C. Lightweight Access Point Protocol (LWAPP)
- D. Process Application Programming Interface (PAPI)

Answer: B

NEW QUESTION 41

Refer to the exhibit.



The Aruba 8400 in the exhibit is member 2 of a VSX stack.

Which command will enter the interface sub configuration mode for the port, indicated by the orange square?

- A. 8400(config)# interface 2/4/15
- B. 8400(config)# interface 1/7/16
- C. 8400(config)# interface 1/4/15
- D. 8400(config)# interface 2/3/17

Answer: A

NEW QUESTION 45

Which two commands will save the running-config so that changes will be loaded automatically on the next reboot? (Choose two.)

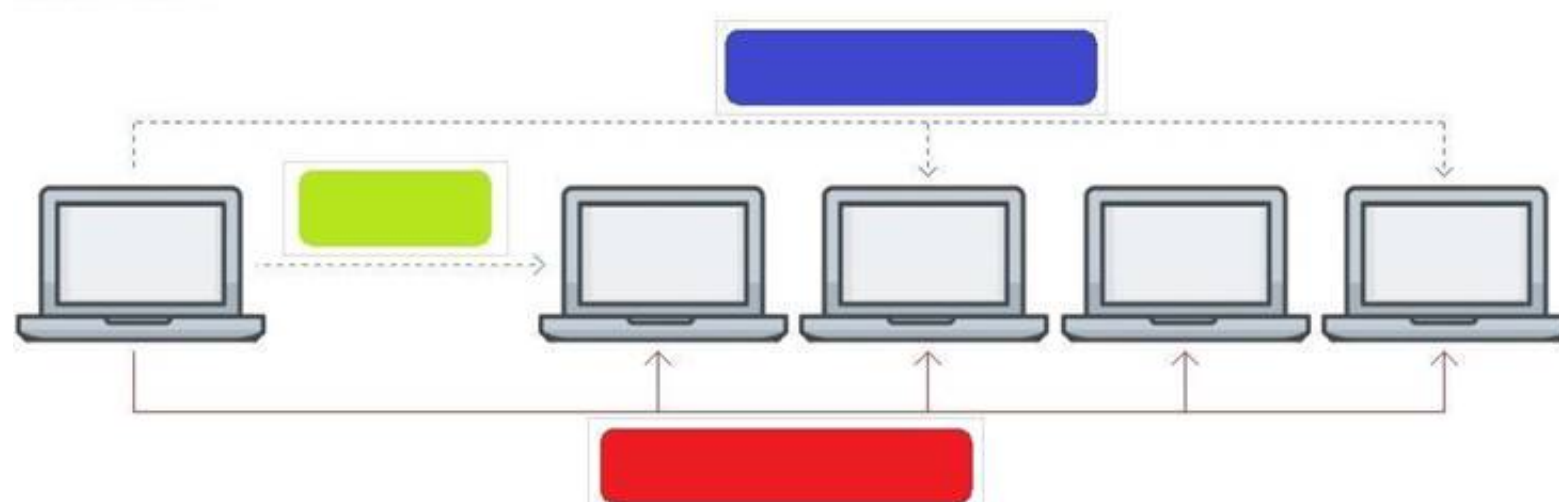
- A. write memory
- B. save
- C. copy config config1 config startup-config
- D. copy running-config startup-config
- E. copy running-config checkpoint boot-config

Answer: AD

NEW QUESTION 47

Click on the colored box that corresponds with the line that best represents Unicast traffic flow.

Answer Area

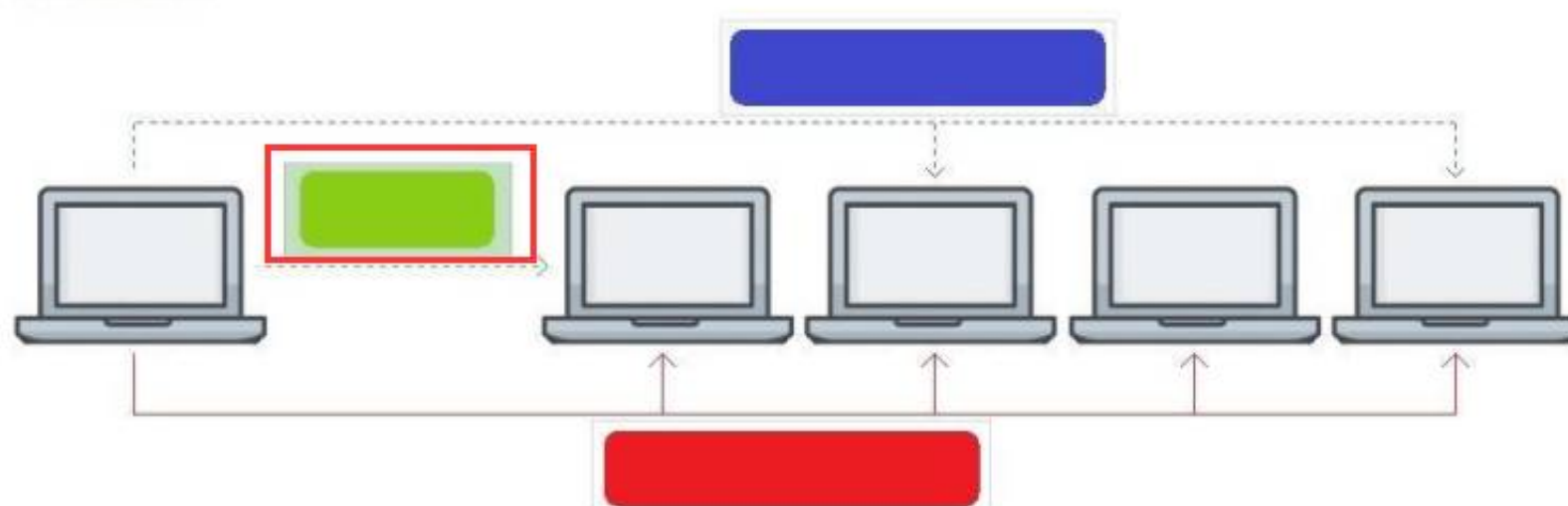


- A. Mastered
- B. Not Mastered

Answer: A

Explanation:

Answer Area



NEW QUESTION 50

Which security benefit does SNMPv3 offer that SNMPv2 does not offer?

- A. SSL encryption
- B. Scopes
- C. Data confidentiality
- D. RADIUS groups

Answer: C

NEW QUESTION 51

Refer to the exhibit

```
Access-1(config)# show vlan
```

VLAN	Name	Status	Reason	Type	Interfaces
1	DEFAULT_VLAN_1	up	ok	default	1/1/1-1/1/28
50	Engineering	down	no_member_port	static	

What is true regarding VLAN 50 according to the diagram above?

- A. VLAN 50 is part of a switched virtual interface (SVI) that was never routed causing it to be down.
- B. Since VLAN 50 has not been assigned to any enabled physical port, the status is down.
- C. VLAN 50 is assigned only to Trunk ports which is why no ports are listed under interfaces.
- D. VLAN 50 was never added to the vlan-database and therefore is in a down state.

Answer: B

NEW QUESTION 54

Which network category applies to a SOHO internal network?

- A. SD-WAN
- B. LAN
- C. WAN
- D. Internet

Answer: D

NEW QUESTION 59

Which Ethernet port combination does the Aruba 5400R ZL2 switch series support?

- A. 10/100 Megabit Ethernet, Gigabit Ethernet, and 100 Gigabit Ethernet
- B. Gigabit Ethernet, 25 Gigabit Ethernet, and 40 Gigabit Ethernet
- C. 10/100 Megabit Ethernet, Gigabit Ethernet, 25 Gigabit Ethernet, and 100 Gigabit Ethernet
- D. 10/100 Megabit Ethernet, Gigabit Ethernet, and 40 Gigabit Ethernet

Answer: D

NEW QUESTION 62

Which two options are the Layer 3 Routing protocols? (Choose two.)

- A. BGP
- B. LLDP
- C. OSPF
- D. MPLS
- E. 802.3ad

Answer: AC

NEW QUESTION 67

What are the benefits of a 3-Tier design over a 2-Tier? (Choose two.)

- A. Offloading processing from the Core without routing at the Access layer.
- B. Can use lower speed links between Core to Aggregation and Aggregation to Access given the use of an Aggregation layer.
- C. Lowering the cost of a deployment due to needing less switches overall.
- D. Better scalability in a campus with a large number of buildings.
- E. Gaining the flexibility to connect the Data-Center to any Access layer switch.

Answer: AD

NEW QUESTION 71

Which two statements accurately describe stacking with Aruba switches? (Choose two.)

- A. A VSF stack is allowed between an AOS-CX 6300M and 6300F switches.
- B. VSF is a core or aggregation layer stacking technology due to the high resiliency of sharing a single control plane.
- C. The VSF feature is not compatible between AOS-CX and AOS platforms.
- D. A VSF stack is allowed between an AOS 5400R and an AOS-CX 6400.
- E. VSF and VSX are stacking option with the AOS-CX 8320, 8325, 8400, and 6400 models.

Answer: BE

NEW QUESTION 72

You have completed a successful VSF stack between two switches.

Without manually assigning a backup switch, what is the expected output when issuing a show vsf command?

- A. T1-6300-A# show vsf
<omitted>
Mbr Mac Address type Status ID

1 88:3a:30:a3:e5:40 JL660A Commander
2 88:3a:30:a6:d9:80 JL660A Secondary
- B. T1-6300-A# show vsf
<omitted>
Mbr Mac Address type Status ID

1 88:3a:30:a3:e5:40 JL660A Primary
2 88:3a:30:a6:d9:80 JL660A Secondary
- C. T1-6300-A# show vsf
<omitted>
Mbr Mac Address type Status ID

1 88:3a:30:a3:e5:40 JL660A Master
2 88:3a:30:a6:d9:80 JL660A Member
- D. T1-6300-A# show vsf
<omitted>
Mbr Mac Address type Status ID

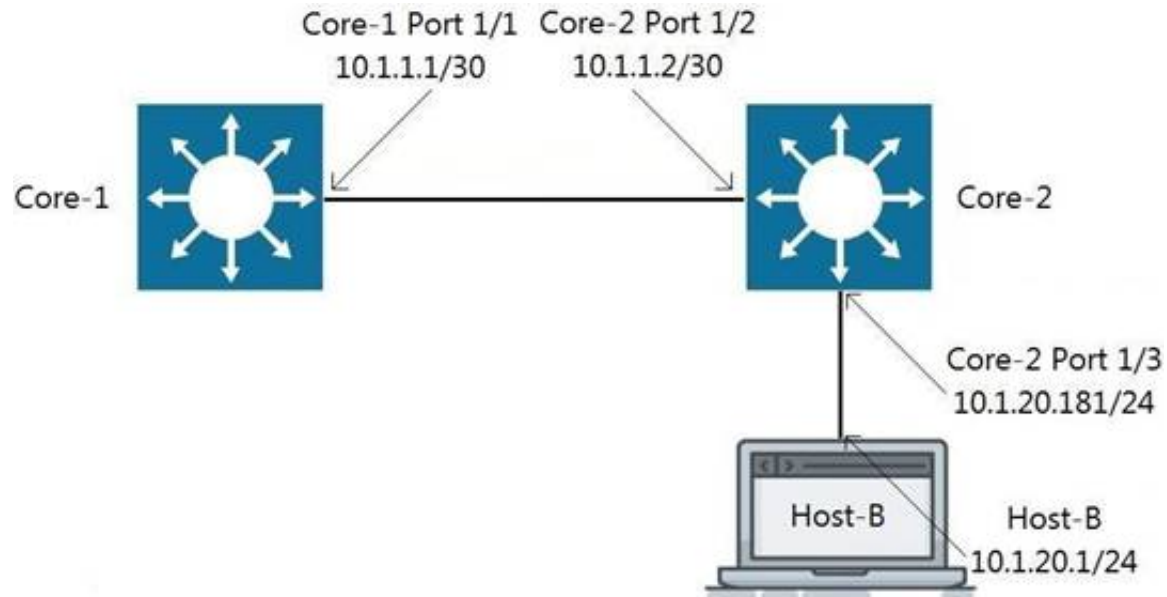
1 88:3a:30:a3:e5:40 JL660A Master
2 88:3a:30:a6:d9:80 JL660A Standby

- A. Option A
- B. Option B
- C. Option C
- D. Option D

Answer: D

NEW QUESTION 73

Refer to the exhibit.



Traffic is failing between Core-1 and Host-B. IP addressing has correctly been applied, and all interfaces are attached to the vrf GREEN. Which configuration will correct the issue?

- A. Core-2(config)# ip route 0.0.0.0/0 10.1.1.1 vrf GREEN Host-B: assign the default-gateway address 10.1.20.181
- B. Core-1(config)# ip route 10.1.20.0/24 10.1.1.2 vrf GREEN Host-B: assign the default-gateway address 10.1.20.181
- C. Core-1(config)# ip route 10.1.20.0/24 10.1.1.2 vrf GREEN Host-B: assign the default-gateway address 10.1.20.1
- D. Host-B: assign the default-gateway address 10.1.20.181

Answer: B

NEW QUESTION 76

.....

Thank You for Trying Our Product

We offer two products:

1st - We have Practice Tests Software with Actual Exam Questions

2nd - Questions and Answers in PDF Format

HPE6-A72 Practice Exam Features:

- * HPE6-A72 Questions and Answers Updated Frequently
- * HPE6-A72 Practice Questions Verified by Expert Senior Certified Staff
- * HPE6-A72 Most Realistic Questions that Guarantee you a Pass on Your FirstTry
- * HPE6-A72 Practice Test Questions in Multiple Choice Formats and Updatesfor 1 Year

100% Actual & Verified — Instant Download, Please Click
[Order The HPE6-A72 Practice Test Here](#)