

Exam Questions MD-100

Windows 10

<https://www.2passeasy.com/dumps/MD-100/>



NEW QUESTION 1

- (Exam Topic 4)

You have a computer named Computer1 that runs Windows 11.

You receive a notification that Computer1 is running low on disk space. You need to remove the following files from Computer1:

- Unused apps
 - Unused Microsoft OneDrive content
 - Non-critical files for Microsoft Defender Antivirus
- The solution must minimize administrative effort.

Which tool should you use to remove each type of file? To answer, drag the appropriate tools to the correct file types. Each tool may be used once, more not at all.

You may need to drag the split bar between panes or scroll to view content.

Tools

Cleanup recommendations

Disk Cleanup

Disk Management

Storage Sense

File types

Unused apps: Tool

Unused OneDrive content: Tool

Non-critical files for Microsoft Defender Antivirus: Tool

- A. Mastered
B. Not Mastered

Answer: A

Explanation:

Tools

Cleanup recommendations

Disk Cleanup

Disk Management

Storage Sense

File types

Unused apps: Disk Cleanup

Unused OneDrive content: Disk Management

Non-critical files for Microsoft Defender Antivirus: Cleanup recommendations

NEW QUESTION 2

- (Exam Topic 4)

Your company purchases 20 laptops that use a new hardware platform. In a test environment, you deploy Windows 10 to the new laptops. Some laptops frequently generate stop errors.

You need to identify the cause of the issue. What should you use?

- A. Reliability Monitor
B. Task Manager
C. System Configuration
D. Performance Monitor

Answer: A

Explanation:

References:

<https://lifehacker.com/how-to-troubleshoot-windows-10-with-reliability-monitor-1745624446>

NEW QUESTION 3

- (Exam Topic 4)

Your network contains an Active Directory domain. The domain contains two computers named Computer1 and Computer2 that run Windows 10.

You need to modify the registry of Computer1 by using Registry Editor from Computer2. Which two registry hives can you modify? Each correct answer presents part of the solution.

NOTE: Each correct selection is worth one point.

- A. HKEY_CURRENT_USER
B. HKEY_LOCAL_MACHINE
C. HKEY_USERS

- D. HKEY_CLASSES_ROOT
- E. HKEY_CURRENT_CONFIG

Answer: BC

NEW QUESTION 4

- (Exam Topic 4)

You have a computer named Computer1 that runs Windows 10. Computer1 has the local users shown in the following table.

Name	Member of
User1	Administrators
User2	Event Log readers
User3	Device Owners
User4	Power Users
User5	Users

Which users can analyze the event logs on Computer1? To answer, select the appropriate options in the answer area.

NOTE: Each correct selection is worth one point.

Users who can analyze security event logs:

User1 only

User1 and User2 only

User1 and User2, and User3 only

User1, User2, User3, and User4 only

User1, User2, User3, User4, and User5

Users who can analyze system event logs:

User1 only

User1 and User2 only

User1 and User2, and User3 only

User1, User2, User3, and User4 only

User1, User2, User3, User4, and User5

- A. Mastered
- B. Not Mastered

Answer: A

Explanation:

References:

<https://docs.microsoft.com/en-us/windows/security/identity-protection/access-control/local-accounts#sec-localsy>

NEW QUESTION 5

- (Exam Topic 4)

Please wait while the virtual machine loads. Once loaded, you may proceed to the lab section. This may take a few minutes, and the wait time will not be deducted from your overall test time.

When the Next button is available, click it to access the lab section. In this section, you will perform a set of tasks in a live environment. While most functionality will be available to you as it would be in a live environment, some functionality (e.g., copy and paste, ability to navigate to external websites) will not be possible by design.

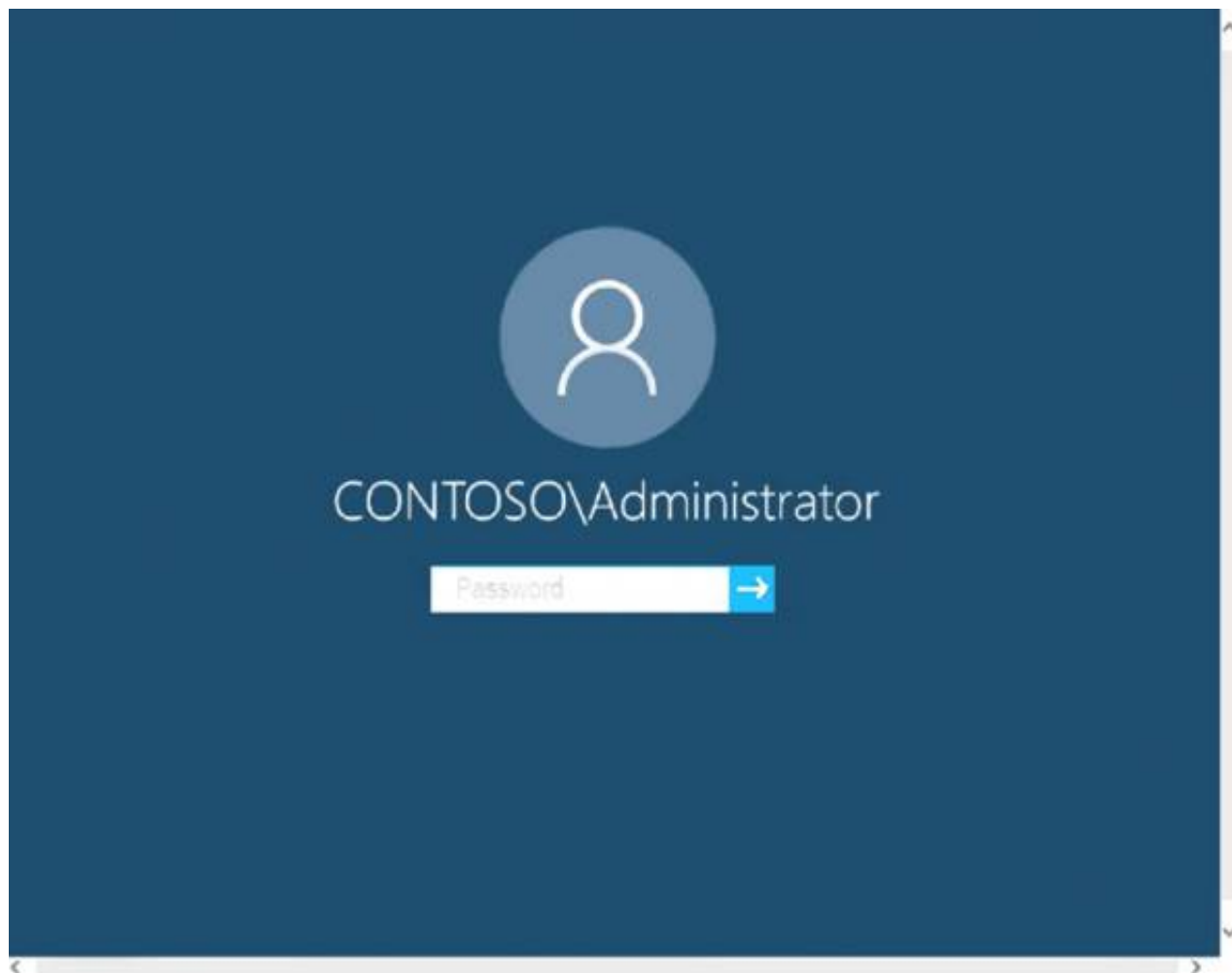
Scoring is based on the outcome of performing the tasks stated in the lab. In other words, it doesn't matter how you accomplish the task, if you successfully perform it, you will earn credit for that task.

Labs are not timed separately, and this exam may more than one lab that you must complete. You can use as much time as you would like to complete each lab.

But, you should manage your time appropriately to ensure that you are able to complete the lab(s) and all other sections of the exam in the time provided.

Please note that once you submit your work by clicking the Next button within a lab, you will NOT be able to return to the lab.

Username and password



Use the following login credentials as needed:

To enter your password, place your cursor in the Enter password box and click on the password below.

Username: Contoso/Administrator

Password: Passw0rd!

The following information is for technical support purposes only:

Lab Instance: 10921597



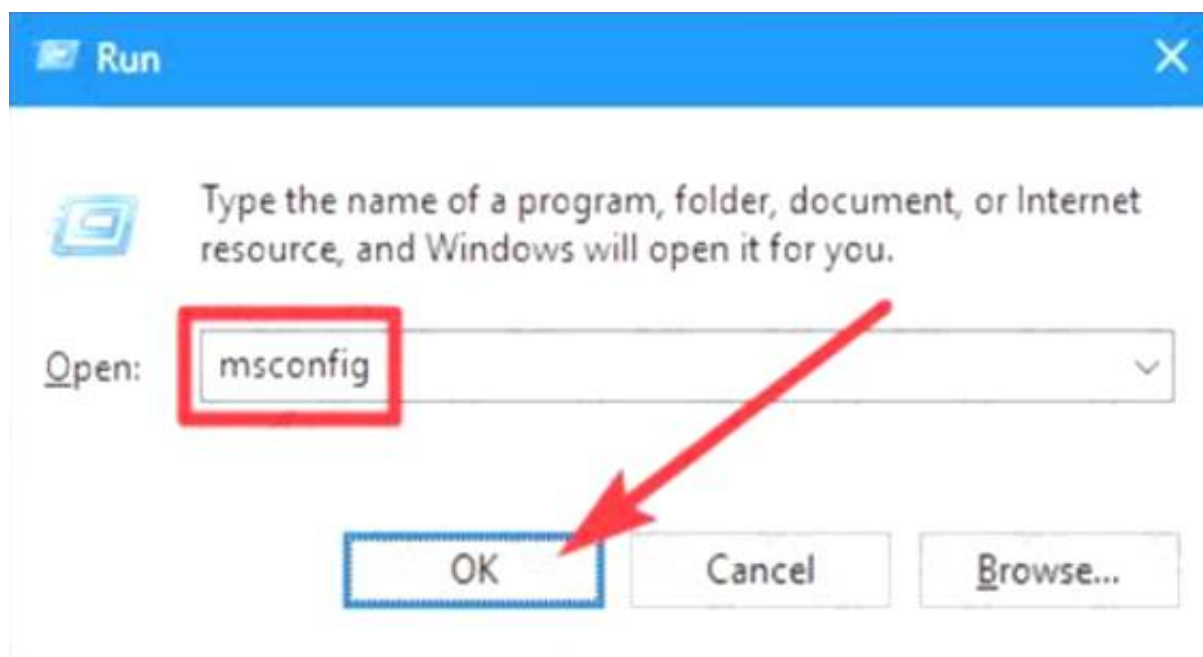
You need to ensure that Client3 starts in safe mode automatically the next time the computer restarts. After completing the task, you must NOT restart Client3. To complete this task, sign in to the required computer or computers.

- A. Mastered
- B. Not Mastered

Answer: A

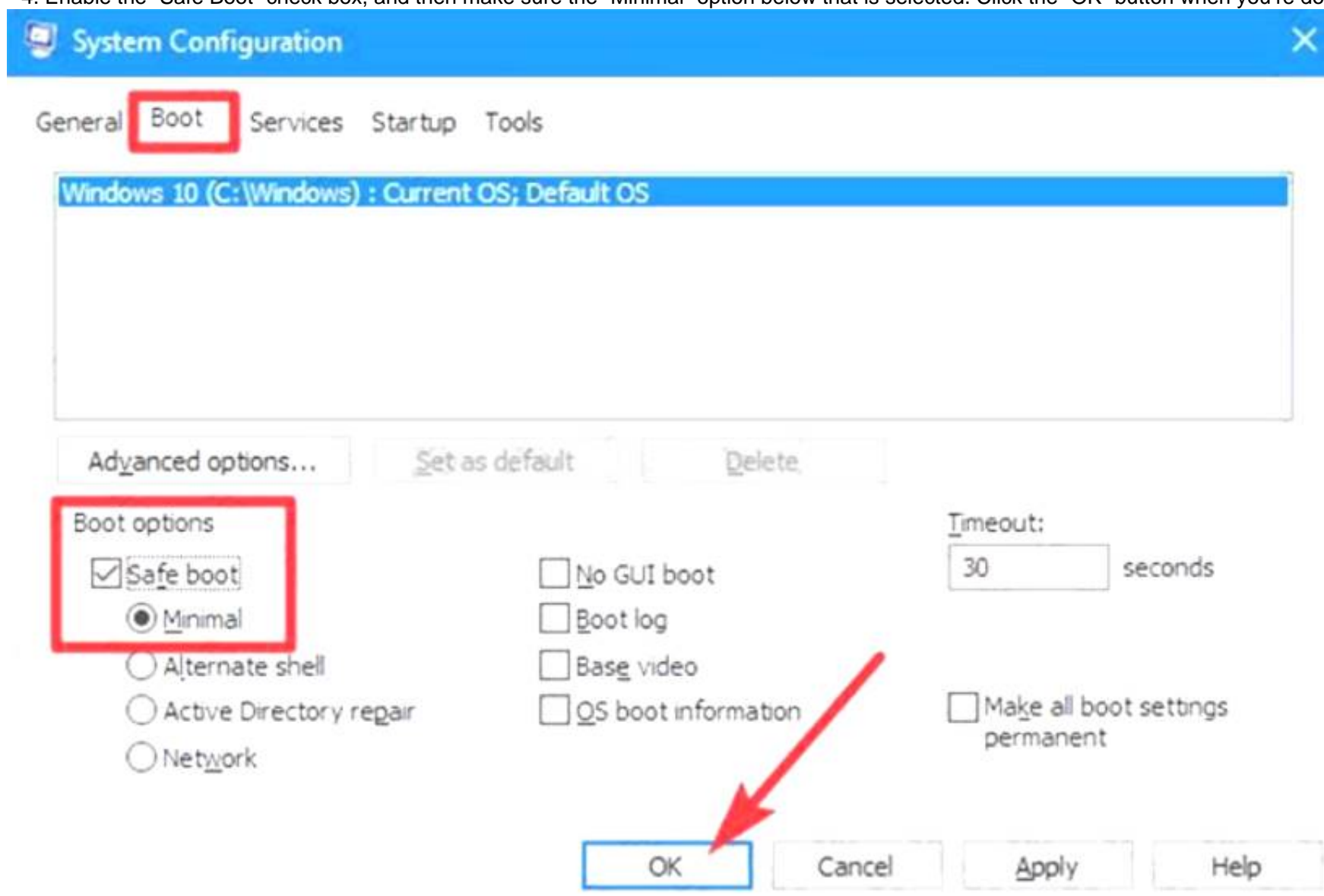
Explanation:

- * 1. From Client3, open the System Configuration utility by pressing the Windows & R keys simultaneously to display the Run box .
- * 2. Type "msconfig" into the box, and then click OK.

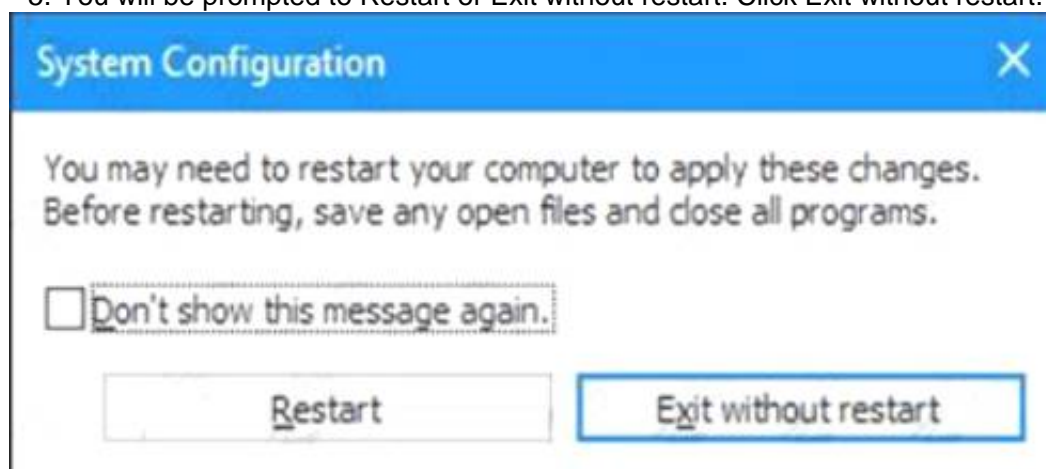


* 3. In the "System Configuration" window, switch to the "Boot" tab.

* 4. Enable the "Safe Boot" check box, and then make sure the "Minimal" option below that is selected. Click the "OK" button when you're done.



* 5. You will be prompted to Restart or Exit without restart. Click Exit without restart.



Reference:

<https://www.howtogeek.com/howto/windows-vista/force-windows-to-boot-into-safe-mode-without-using-the-f8>

NEW QUESTION 6

- (Exam Topic 4)

Your network contains an Active Directory domain. The domain contains 500 computers that run Windows 10. The computers are used as shown in the following table.

Usage	Update note
Manufacturing	Critical computers that must have minimal downtime: Updates must be deferred as long as possible.
Information technology (IT)	Computers for IT staff: Updates must be installed as soon as they are released.
Administration	Computers for general use: Updates must be installed two months after they are released.

You need to apply updates based on the computer usage. What should you configure?

- A. Notifications & actions from System in the Settings apps.
- B. the Windows Update for Business settings by using a Group Policy Object (GPO)
- C. the Windows Installer settings by using a Group Policy Object (GPO)
- D. Delivery Optimization from Update & Security in the Settings apps

Answer: B

Explanation:

Reference:

<https://docs.microsoft.com/en-us/windows/deployment/update/waas-wufb-group-policy>

NEW QUESTION 7

- (Exam Topic 4)

You have a Microsoft Azure Active Directory (Azure AD) tenant.

Some users sign in to their computer by using Windows Hello for Business.

A user named User1 purchases a new computer and joins the computer to Azure AD.

User1 attempts to configure the sign-in options and receives the error message shown in the exhibit.

Sign-in options

***Some settings are hidden or managed by your organization.**



Windows Hello

Sign in to Windows, apps and services by teaching Windows to recognize you.

Windows Hello isn't available on this device.

[See how it works and find compatible devices.](#)

You open Device Manager and confirm that all the hardware works correctly.

You need to ensure that User1 can use Windows Hello for Business facial recognition to sign in to the computer.

What should you do first?

- A. Purchase an infrared (IR) camera.
- B. Upgrade the computer to Windows 10 Enterprise.
- C. Enable UEFI Secure Boot.
- D. Install a virtual TPM driver.

Answer: B

Explanation:

References:

<https://docs.microsoft.com/en-us/windows/security/identity-protection/hello-for-business/hello-planning-guide>

NEW QUESTION 8

- (Exam Topic 4)

You are a network administrator at your company.

A user attempts to start a computer and receives the following error message: "Bootmgr is missing." You need to resolve the issue.

You start the computer in the recovery mode.

Which command should you run next? To answer, select the appropriate options in the answer area. NOTE: Each correct selection is worth one point.

▼	▼
Bootrec	/FixMbr
Diskpart	/RebuildBcd
Sfc	/ScanNow
	/offbootdir

- A. Mastered
- B. Not Mastered

Answer: A

Explanation:

References: <https://neosmart.net/wiki/bootmgr-is-missing/>

NEW QUESTION 9

- (Exam Topic 4)

Please wait while the virtual machine loads. Once loaded, you may proceed to the lab section. This may take a few minutes, and the wait time will not be deducted from your overall test time.

When the Next button is available, click it to access the lab section. In this section, you will perform a set of tasks in a live environment. While most functionality will be available to you as it would be in a live environment, some functionality (e.g., copy and paste, ability to navigate to external websites) will not be possible by design.

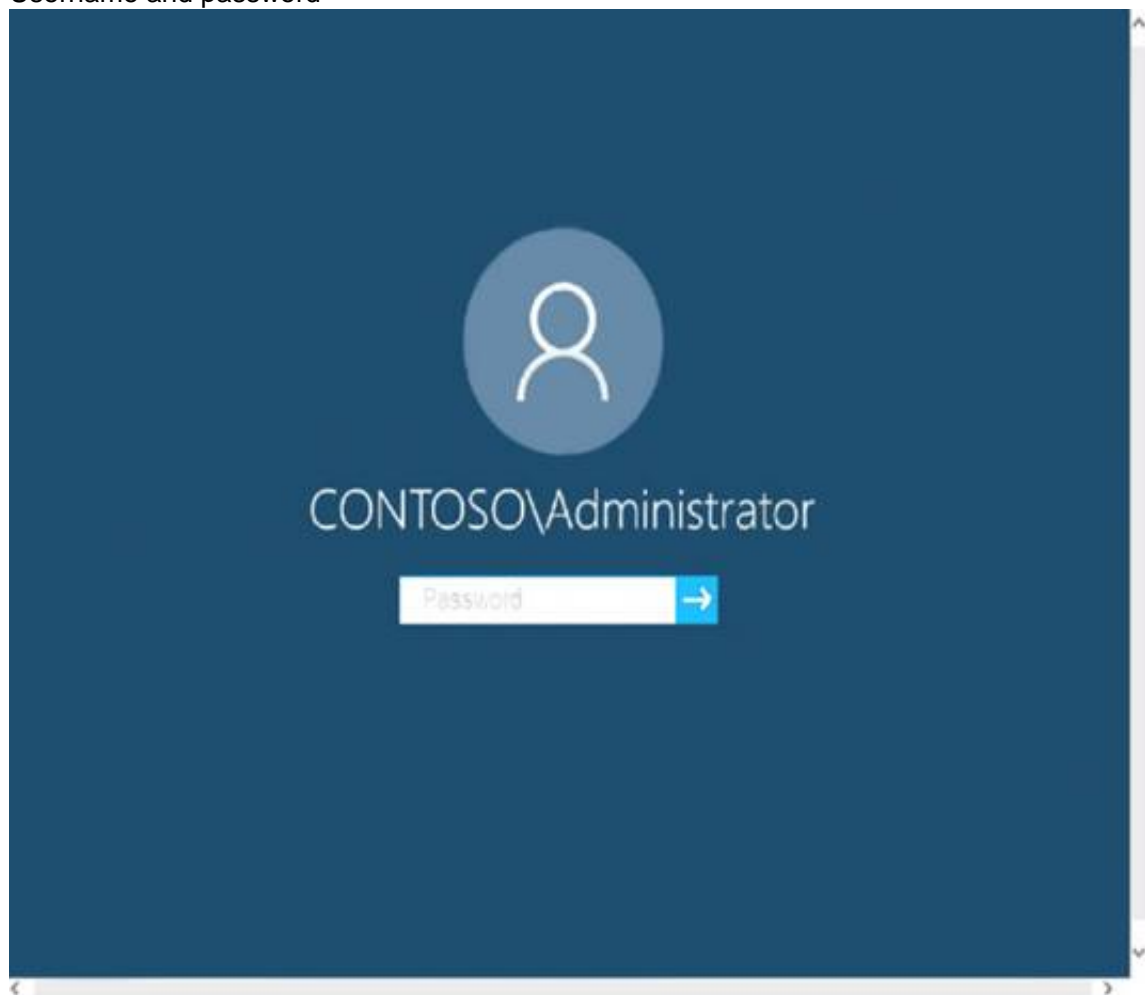
Scoring is based on the outcome of performing the tasks stated in the lab. In other words, it doesn't matter how you accomplish the task, if you successfully perform it, you will earn credit for that task.

Labs are not timed separately, and this exam may more than one lab that you must complete. You can use as much time as you would like to complete each lab.

But, you should manage your time appropriately to ensure that you are able to complete the lab(s) and all other sections of the exam in the time provided.

Please note that once you submit your work by clicking the Next button within a lab, you will NOT be able to return to the lab.

Username and password



Use the following login credentials as needed:

To enter your password, place your cursor in the Enter password box and click on the password below.

Username: Contoso/Administrator

Password: Passw0rd!

The following information is for technical support purposes only: Lab Instance: 11145882

The screenshot shows the Windows Server Manager interface. On the left is a navigation pane with 'Dashboard' selected. The main area is titled 'WELCOME TO SERVER MANAGER' and contains a 'QUICK START' section with five steps: 1. Configure this local server, 2. Add roles and features, 3. Add other servers to manage, 4. Create a server group, and 5. Connect this server to cloud services. Below this is a 'ROLES AND SERVER GROUPS' section. It shows a list of roles and server groups. The roles listed are AD DS, DNS, File and Storage Services, and Local Server. Each role has a 'Manageability' section with links to 'Events', 'Services', 'Performance', and 'BPA results'. The 'Local Server' role is highlighted in red. Below the roles list are two buttons: 'Tasks' and 'Computers'.



Users in the Finance group report that they cannot copy files to Client1\Finance. You need to resolve the issue. To complete this task, sign in to the required computer or computers.

- A. Mastered
- B. Not Mastered

Answer: A

Explanation:

- Open File Explorer.
- Browse and find the file or folder you want to have full access.
- Right-click it, and select Properties.
- Click the Security tab to access the NTFS permissions.
- Click the Advanced button.

- On the "Advanced Security Settings" page, you need to click the Change link, in the Owner's field.
- Click the Advanced button.
- On the "Select User or Group" page, click the Find Now button.
- From the search result, select your user account, and click OK.
- On the "Select User or Group" page, click OK.
- Click Apply.
- Click OK.
- Click OK again.
- Click OK one more time to complete this task.

It's important to note that if you're taking ownership of a folder, you can check the Replace ownership on subcontainers and object option in the Advanced Security Settings page to take control of the subfolders inside of the folder.

Now you'll need to grant full access control to your account, to do this use the following steps:

- Right-click the file or folder and select Properties.
- Click the Security tab to access the NTFS permissions.
- Click the Advanced button.
- Under the Permissions tab, click Add.
- Click Select a principal to add your user account.
- On the "Select User or Group" page, click the Find Now button.
- From the search result, select your user account, and click OK.
- On the "Select User or Group" page, click OK.
- On "Permission Entry", check the Full control option.
- Click OK.
- Click OK.
- Click Apply.
- Click OK.
- Click OK to close the file or folder properties to complete the task.

You can now assign the necessary permissions to the Finance group.

If you right-click on a file or folder, choose Properties and click on the Security tab, we can now try to edit some permissions. Go ahead and click the Edit button to get started.

At this point, there are a couple of things you can do. Firstly, you'll notice that the Allow column is probably greyed out and can't be edited. This is because of the inheritance I was talking about earlier. However, you can check items on the Deny column.

When you click the Add button, you have to type in the user name or group name into the box and then click on Check Names to make sure it's correct. If you don't remember the user or group name, click on the Advanced button and then just click Find Now. It will show you all the users and groups.

Click OK and the user or group will be added to the access control list. Now you can check the Allow column or Deny column.

Reference:

<https://www.windowscentral.com/how-take-ownership-files-and-folders-windows-10> <https://www.online-tech-tips.com/computer-tips/set-file-folder-permissions-windows/>

NEW QUESTION 10

- (Exam Topic 4)

Your network contains an Active Directory domain. The domain contains a computer named Computer1 that runs Windows 10.

You need to ensure that Computer1 will respond to ping requests.

How should you configure Windows Defender Firewall on Computer1? To answer, select the appropriate options in the answer area.

NOTE: Each correct selection is worth one point.

Answer Area

Rule to create:

▼
A server-to-server connection security rule
An authentication exemption connection security rule
An inbound rule
An outbound rule

Protocol type to allow:

▼
ICMPv4
IGMP
PGM
TCP
UDP

- A. Mastered
- B. Not Mastered

Answer: A

Explanation:

Answer Area

Rule to create:

A server-to-server connection security rule

An authentication exemption connection security rule

An inbound rule

An outbound rule

Protocol type to allow:

ICMPv4

IGMP

PGM

TCP

UDP

NEW QUESTION 10

- (Exam Topic 4)

You have the computer shown in the following table.

Name	Windows 10 edition	Servicing channel
Computer1	Windows 10 Pro	Preview Build - Fast
Computer2	Windows 10 Pro	Semi-annual
Computer3	Windows 10 Enterprise	Long-term

You plan to configure deployment rings for Windows 10 quality and feature updates.

What is the maximum number of days you can defer installing quality updates, and which computers support installing feature updates from Windows Update? To answer, select the appropriate options in the answer area.

NOTE: Each correct selection is worth one point.

Maximum number of days you can defer installing quality updates:

7 days

30 days

180 days

365 days

Computers that support installing feature updates from Windows Update:

Computer1 only

Computer2 only

Computer3 only

Computer1 and Computer2 only

Computer1, Computer2, and Computer3

- A. Mastered
 B. Not Mastered

Answer: A

Explanation:

Graphical user interface, text, application, email Description automatically generated

Reference:

<https://docs.microsoft.com/en-us/windows/deployment/update/waas-configure-wufb>

NEW QUESTION 11

- (Exam Topic 4)

You have the computers shown in the following table.

Name	Windows 10 edition	Servicing channel
Computer1	Windows 10 Education	Semi-annual
Computer2	Windows 10 Pro	Semi-annual
Computer3	Windows 10 Enterprise	Semi-annual

You apply the 20H2 feature update as soon as the update is available.

How many months of servicing does each computer support without installing another feature update? To answer, select the appropriate options in the answer area.

NOTE: Each correct selection is worth one point.

Computer1: 

Computer2: 

Computer3: 

- A. Mastered
- B. Not Mastered

Answer: A

Explanation:

Table Description automatically generated with medium confidence

Reference:

<https://docs.microsoft.com/en-us/windows/deployment/update/get-started-updates-channels-tools>

NEW QUESTION 14

- (Exam Topic 4)

Note: This question is part of a series of questions that present the same scenario. Each question in the series contains a unique solution that might meet the stated goals. Some question sets might have more than one correct solution, while others might not have a correct solution.

After you answer a question in this section, you will NOT be able to return to it. As a result, these questions will not appear in the review screen.

You have two computers named Computer1 and Computer2 that run Windows 10.

You have an Azure Active Directory (Azure AD) user account named admin@contoso.com that is in the local Administrators group on each computer.

You sign in to Computer1 by using admin@contoso.com.

You need to ensure that you can use Event Viewer on Computer1 to connect to the event logs on Computer2.

Solution: On Computer2, you create a Windows Defender Firewall rule that allows eventvwr.exe. Does this meet the goal?

- A. Yes
- B. No

Answer: B

Explanation:

Reference:

<https://docs.microsoft.com/en-us/previous-versions/windows/it-pro/windows-server-2008-R2-and-2008/cc76643>

NEW QUESTION 16

- (Exam Topic 4)

You have a Microsoft 365 Enterprise E3 license.

You have a computer named Computer1 that runs Windows 10.

You need to ensure that you can access the files on Computer1 by using a web browser on another computer. What should you configure?

- A. Sync your settings in the Settings app
- B. the File Explorer desktop app
- C. the Microsoft OneDrive desktop app
- D. Default apps in the Settings app

Answer: C

NEW QUESTION 20

- (Exam Topic 4)

You have a Microsoft Azure Active Directory (Azure AD) tenant.

Some users signs in to that computer by using Windows hello for Business. A user User1 purchases a new computer and joins the computer to Azure AD.

User1 attempts to configure the sign-in options and receives the error message shown in the exhibit. (Click the Exhibit tab.)

Sign-in options

*Some settings are hidden or managed by your organization.



Windows Hello

Sign in to Windows, apps and services by teaching Windows to recognize you.

Windows Hello isn't available on this device.

[See how it works and find compatible devices.](#)

You open device Manager and confirmed that all the hardware works correctly.

You need to ensure that user1 can use Windows Hello for Business facial recognition to sign in to the computer.

What should you do first.

- A. Purchase an infrared (IR) camera.
- B. Install a virtual TPM driver.
- C. Enable UEF Secure Boot.
- D. Upgrade the computer to windows 10 Enterprise.

Answer: D

NEW QUESTION 25

- (Exam Topic 4)

Please wait while the virtual machine loads. Once loaded, you may proceed to the lab section. This may take a few minutes, and the wait time will not be deducted from your overall test time.

When the Next button is available, click it to access the lab section. In this section, you will perform a set of tasks in a live environment. While most functionality will be available to you as it would be in a live environment, some functionality (e.g., copy and paste, ability to navigate to external websites) will not be possible by design.

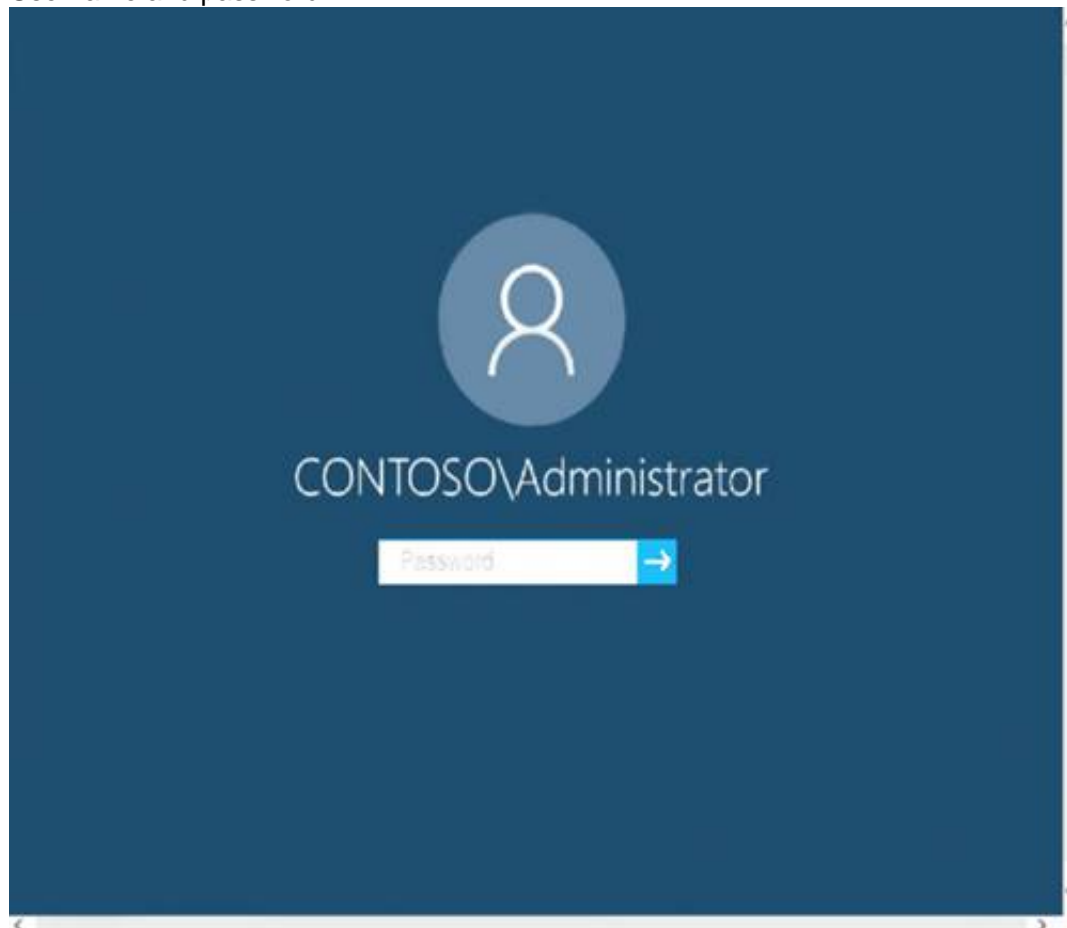
Scoring is based on the outcome of performing the tasks stated in the lab. In other words, it doesn't matter how you accomplish the task, if you successfully perform it, you will earn credit for that task.

Labs are not timed separately, and this exam may more than one lab that you must complete. You can use as much time as you would like to complete each lab.

But, you should manage your time appropriately to ensure that you are able to complete the lab(s) and all other sections of the exam in the time provided.

Please note that once you submit your work by clicking the Next button within a lab, you will NOT be able to return to the lab.

Username and password



Use the following login credentials as needed:

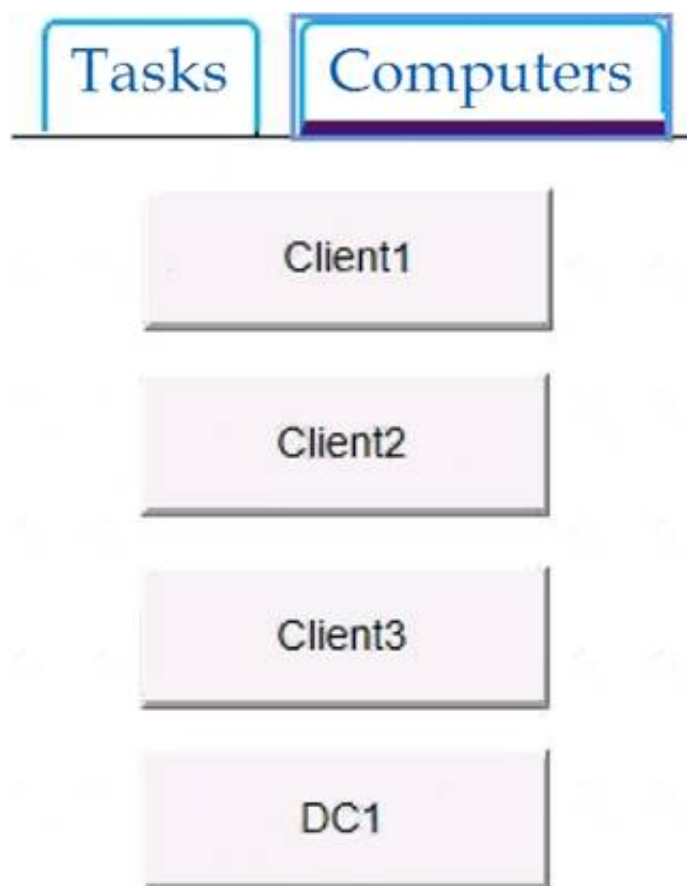
To enter your password, place your cursor in the Enter password box and click on the password below.

Username: Contoso/Administrator

Password: Passw0rd!

The following information is for technical support purposes only:

Lab Instance: 10921597



You need to create a group named Group2 on Client2. The members of Group2 must be able to change the system time. The solution must use the principle of least privilege.

To complete this task, sign in to the required computer or computers.

- A. Mastered
- B. Not Mastered

Answer: A

Explanation:

- On Client2, Press Windows+R
- Type lusrmgr.msc
- Right click Groups and click New Group.
- Type in the Group name and a description.
- Click Add to add members to this group. Specify the name of the user or group or computer to be added.
- Click Create and Close.
- Press the Win + R keys to open Run, type secpol.msc into Run, and click/tap on OK to open Local Security Policy.
- Expand open Local Policies in the left pane of Local Security Policy, click/tap on User Rights Assignment, and double click/tap on the Change the system time policy in the right pane.
- Click/tap on the Add User or Group button.
- Click/tap on the Object Types button.
- Check all the boxes for Object types, and click/tap on the OK.
- Click/tap on the Advanced button.
- Click/tap on the Find Now button, select the name of the user or group
- Click/tap on OK.
- Click/tap on OK.
- When finished, you can close Local Users and Groups.

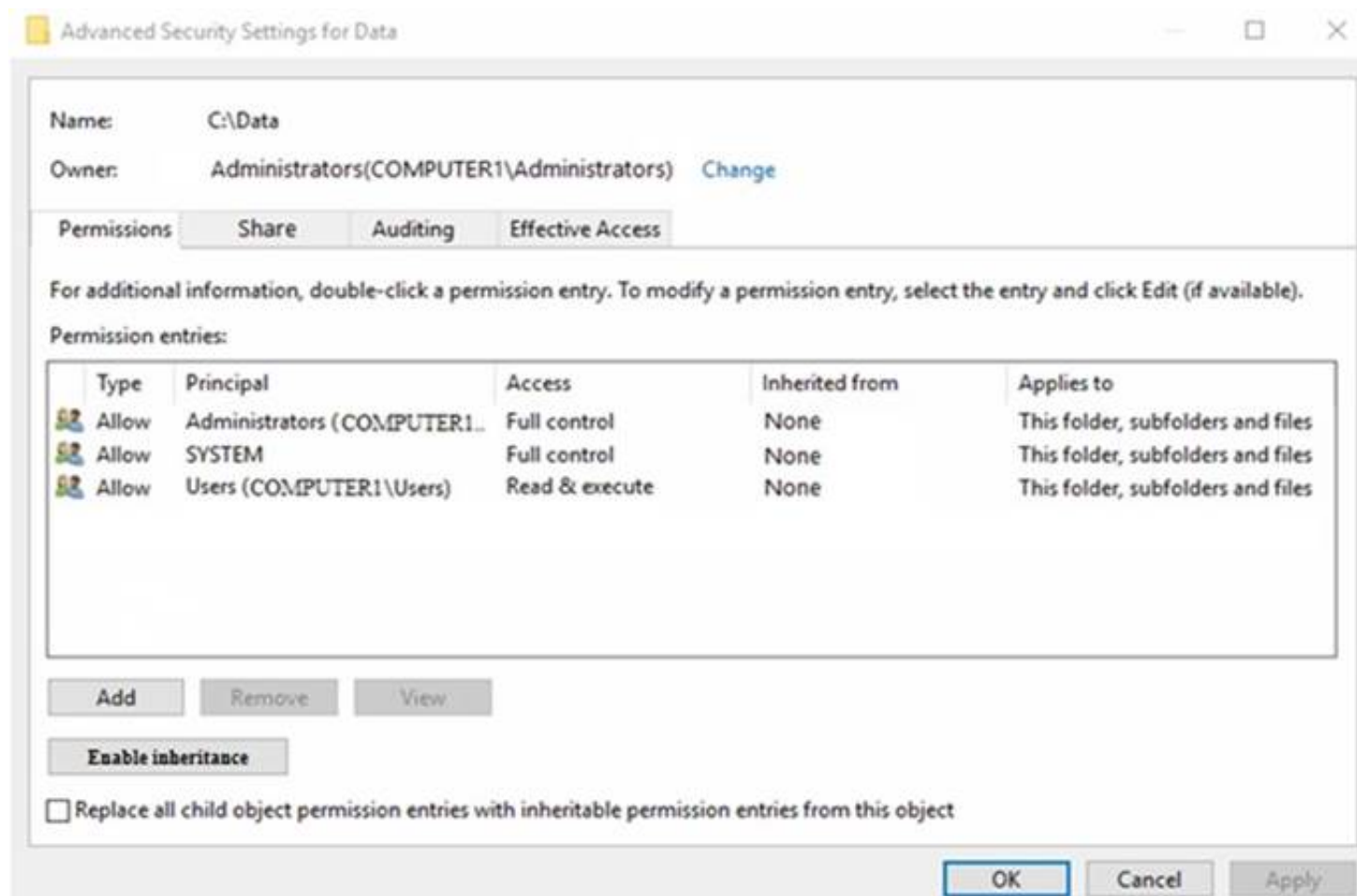
Reference:

<https://www.windows-active-directory.com/local-user-management.html> <https://www.tenforums.com/tutorials/92910-allow-prevent-users-groups-change-time-windows-10-a.html#optio>

NEW QUESTION 29

- (Exam Topic 4)

You have a computer named Computer1 that runs Windows 10. Computer1 contains a folder named Data on drive C. The Advanced Security Settings for the Data folder are shown in the exhibit. (Click the Exhibit tab.)



You share C:\Data as shown in the following table.

Group or user	Share permission
Administrators	Change
Users	Read
User1	Change

User1 is a member of the Users group.

Administrators are assigned Full control NTFS permissions to C:\Data.

For each of the following statements, select Yes if the statement is true. Otherwise, select No. NOTE: Each correct selection is worth one point.

Answer Area

Statements	Yes	No
User1 can read and write files when connected to \\Computer1\Data.	<input type="radio"/>	<input type="radio"/>
User1 can read and write files in C:\Data locally.	<input type="radio"/>	<input type="radio"/>
Administrators can change the NTFS permissions of files and folders when connected to \\Computer1\Data.	<input type="radio"/>	<input type="radio"/>

- A. Mastered
- B. Not Mastered

Answer: A

Explanation:

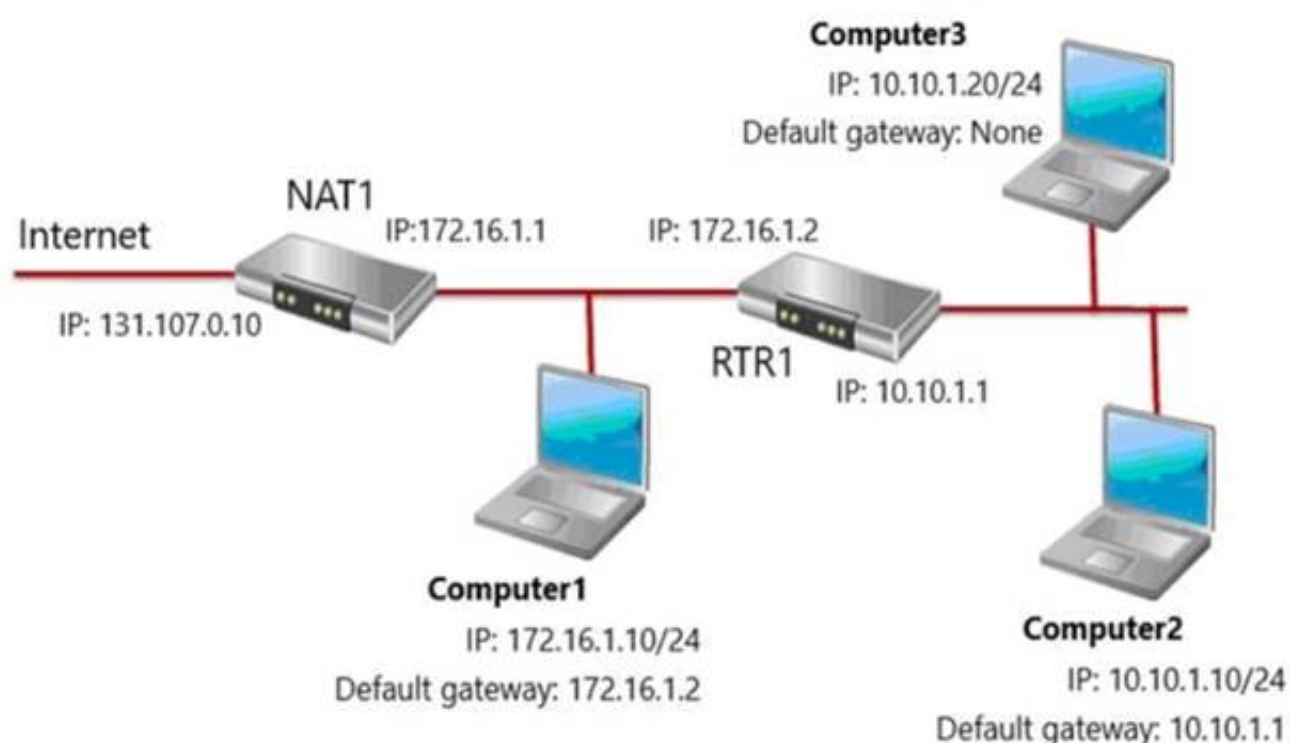
NO, NO, YES

"For example, for a resource, if you assign a user the Read permission and assign the Modify permission on a group that the same user is member of, the effective access permissions are a combination of the Read permissions and the modify permissions, which is modify permission. When you combine Permissions that include Deny permissions, NTFS will evaluate the the deny permissions before the allow permissions that are set on the same resource with explicit deny taking precedence over all Allow Permissions"

NEW QUESTION 31

- (Exam Topic 4)

You have the network shown in the following exhibit.



Computer1, Computer2, and Computer3 run Windows 10. Windows Defender Firewall is configured to allow ICMP traffic. RTR1 is a router. For each of the following statements, select Yes if the statement is true. Otherwise, select No. NOTE: Each correct selection is worth one point.

Answer Area

Statements	Yes	No
If Computer1 pings the IP address of Computer2, Computer1 will receive a reply.	<input type="radio"/>	<input type="radio"/>
If Computer1 pings the IP address of Computer3, Computer1 will receive a reply.	<input type="radio"/>	<input type="radio"/>
If Computer2 pings the IP address of Computer3, Computer2 will receive a reply.	<input type="radio"/>	<input type="radio"/>

- A. Mastered
- B. Not Mastered

Answer: A

Explanation:
Answer Area

Statements	Yes	No
If Computer1 pings the IP address of Computer2, Computer1 will receive a reply.	<input checked="" type="radio"/>	<input type="radio"/>
If Computer1 pings the IP address of Computer3, Computer1 will receive a reply.	<input checked="" type="radio"/>	<input type="radio"/>
If Computer2 pings the IP address of Computer3, Computer2 will receive a reply.	<input type="radio"/>	<input checked="" type="radio"/>

NEW QUESTION 32

- (Exam Topic 4)

You have a computer named Computer1 that runs Windows 10. Computer1 is in a workgroup. Computer1 contains the local users shown in the following table.

Name	Member of
Administrator	Administrators, Users
User1	Users
User2	Users

Computer1 contains the folders shown in the following table.

Name	Path
Folder1	D:\Folder1
Folder2	D:\Folder2
Folder3	E:\Folder3

The Users group has Full control permissions to Folder1, Folder2, and Folder3. User1 encrypts two files named File1.docx and File2.docx in Folder1 by using EFS.

Which users can move each file? To answer, select the appropriate options in the answer area.

NOTE: Each correct selection is worth one point.

Answer Area

Users who can move File1.docx to Folder2:

▼
User1 only
User1 and Administrator only
User1, User2, and Administrator

Users who can move File2.docx to Folder3:

▼
User1 only
User1 and Administrator only
User1, User2, and Administrator

- A. Mastered
- B. Not Mastered

Answer: A

Explanation:

EFS works by encrypting a file with a bulk symmetric key. The symmetric key that is used to encrypt the file is then encrypted with a public key that is associated with the user who encrypted the file. Because the encryption & decryption operations are performed at a layer below NTFS, it is transparent to the user and all their applications.

Box 1: User1, User2, and Administrator Box 2: User1, User2, and Administrator

All three are members of the Users group that has Full control permissions to Folder1, Folder2, and Folder3.

NEW QUESTION 34

- (Exam Topic 4)

Your network contains an Active Directory domain named contoso.com. The domain contains named Computer1 that runs Windows 10.

On Computer1, you create an NTFS folder and assign Full control permissions to Everyone.

You share the folder as Share1 and assign the permissions shown in the following table.

Name	Permission
User1	Full control
User2	Change

When accessing Share1, which two actions can be performed by User1 but not by User2? Each correct answer presents part of the solution.

NOTE: Each correct selection is worth one point.

- A. Delete a file created by another user.
- B. Set the permissions for a file.
- C. Rename a file created by another user.
- D. Take ownership of file.
- E. Copy a file created by another user to a subfolder.

Answer: BD

Explanation:

References:

<https://www.varonis.com/blog/ntfs-permissions-vs-share/>

NEW QUESTION 35

- (Exam Topic 4)

Your company has several mobile devices that run Windows 10.

You need configure the mobile devices to meet the following requirements:

- Windows updates may only be download when mobile devices are connect to Wi-Fi.
- Access to email and the Internet must be possible at all times.

What should you do?

- A. Open the Setting app and select Update & Securit
- B. Then select and configure Change active hours.
- C. Open the Setting app and select Network & Interne
- D. Then select Change connection properties, and setthe Metered connection option for cellular network connections to On.
- E. Open the Setting app and select Network & Internet Then select Data Usage and set a data limit.
- F. Open the Setting app and select Update & Securit
- G. Then select and configure Delivery Optimization.

Answer: B

Explanation:

Reference:

<https://www.makeuseof.com/tag/5-ways-temporarily-turn-off-windows-update-windows-10/>

NEW QUESTION 38

- (Exam Topic 4)

Your network contains an Active Directory domain named contoso.com. The domain contains a computer named Computer1 that runs Windows 10. Several user settings are configured in a Default Domain Policy Group Policy Object (GPO). Users sign in to Computer1 as shown in the following table.

Name	Created in/on	Member of
User1	Contoso.com	Domain Users
User2	Computer1	Administrators

You configure the following GPOs on Computer1:

- > Local Computer
 - > Local Computer\User2
 - > Local Computer\Administrators
 - > Local Computer\Non-Administrators
- Each GPO has different user settings configured.

For each of the following statements, select Yes if the statement is true. Otherwise, select No.

Statements	Yes	No
The Local Computer GPO applies to User1.	<input type="radio"/>	<input type="radio"/>
The Local Computer\Administrators GPO applies to User2.	<input type="radio"/>	<input type="radio"/>
The Default Domain Policy GPO applies to User2.	<input type="radio"/>	<input type="radio"/>

- A. Mastered
- B. Not Mastered

Answer: A

Explanation:

Statements	Yes	No
The Local Computer GPO applies to User1.	<input type="radio"/>	<input checked="" type="radio"/>
The Local Computer\Administrators GPO applies to User2.	<input checked="" type="radio"/>	<input type="radio"/>
The Default Domain Policy GPO applies to User2.	<input type="radio"/>	<input checked="" type="radio"/>

NEW QUESTION 41

- (Exam Topic 4)

You deploy Windows 10 to several computers. The computers will be used by users who frequently present their desktop to other users. You need to prevent applications from generating toast notifications in the notification area. Which settings should you configure from the Settings app?

- A. Shared experiences
- B. Privacy
- C. Focus assist
- D. Tablet mode

Answer: C

Explanation:

Focus Assist will automatically hide incoming notifications, so they don't pop up and distract you while you're playing a game, giving a presentation, or using a full-screen application.

NEW QUESTION 45

- (Exam Topic 4)

You have a computer named Computer1 that runs Windows 10. You restart Computer1 by using Advanced startup and select Boot log. In which folder is the boot log file stored?

- A. C:\
- B. C:\Windows

- C. C:\Windows\debug
- D. C:\Windows\System32\LogFiles

Answer: B

Explanation:

Reference:
<https://winaero.com/enable-boot-log-windows-10/>

NEW QUESTION 47

- (Exam Topic 4)
- You have two computers named Computer1 and Computer2 that run Windows 10. The computers are in a workgroup. You perform the following configurations on Computer1:
- > Create a user named User1.
 - > Add User1 to the Remote Desktop Users group. You perform the following configurations on Computer2:
 - > Create a user named User1 and specify the same user password as the one set on Computer1.
 - > Create a share named Share2 and grant User1 Full control access to Share2.
 - > Enable Remote Desktop.

What are the effects of the configurations? To answer, select the appropriate options in the answer area.
NOTE: Each correct selection is worth one point.

If User1 attempts to access Share2 from Computer1, the user will:

Access Share2 without a prompt
Be prompted for credentials
Be denied access to Share2

If User1 attempts to sign in to Remote Desktop on Computer2 from Computer1, the user will:

Sign in to Remote Desktop without a prompt
Be prompted for credentials and be able to sign in as User1.
Be prompted for credentials and be prevented from signing in as User1.

- A. Mastered
- B. Not Mastered

Answer: A

Explanation:

If User1 attempts to access Share2 from Computer1, the user will:

Access Share2 without a prompt
Be prompted for credentials
Be denied access to Share2

If User1 attempts to sign in to Remote Desktop on Computer2 from Computer1, the user will:

Sign in to Remote Desktop without a prompt
Be prompted for credentials and be able to sign in as User1.
Be prompted for credentials and be prevented from signing in as User1.

NEW QUESTION 51

- (Exam Topic 4)
- You have a computer that runs Windows 10 and contains the folders shown in the following table.

Name	Path
FolderA	C:\FolderA
FolderB	C:\FolderA\FolderB
FolderC	C:\FolderA\FolderB\FolderC

You create the groups shown in the following table.

Name	Members
Group1	User1, User2
Group2	User2, User3
Group3	User1, User3

On FolderA, you remove permission inheritance. To each folder, you assign the NTFS permissions shown in the following table.

Folder	Permission
FolderA	Modify to Group1 Read to Group2
FolderB	Write to Group2
FolderC	Read to Group3

For each of the following statements, select Yes if the statement is true. Otherwise, select No.
NOTE: Each correct selection is worth one point.

Statements	Yes	No
User1 can read and write all files in FolderC.	<input type="radio"/>	<input type="radio"/>
User2 can delete all files in FolderB.	<input type="radio"/>	<input type="radio"/>
User3 can delete all files in FolderC.	<input type="radio"/>	<input type="radio"/>

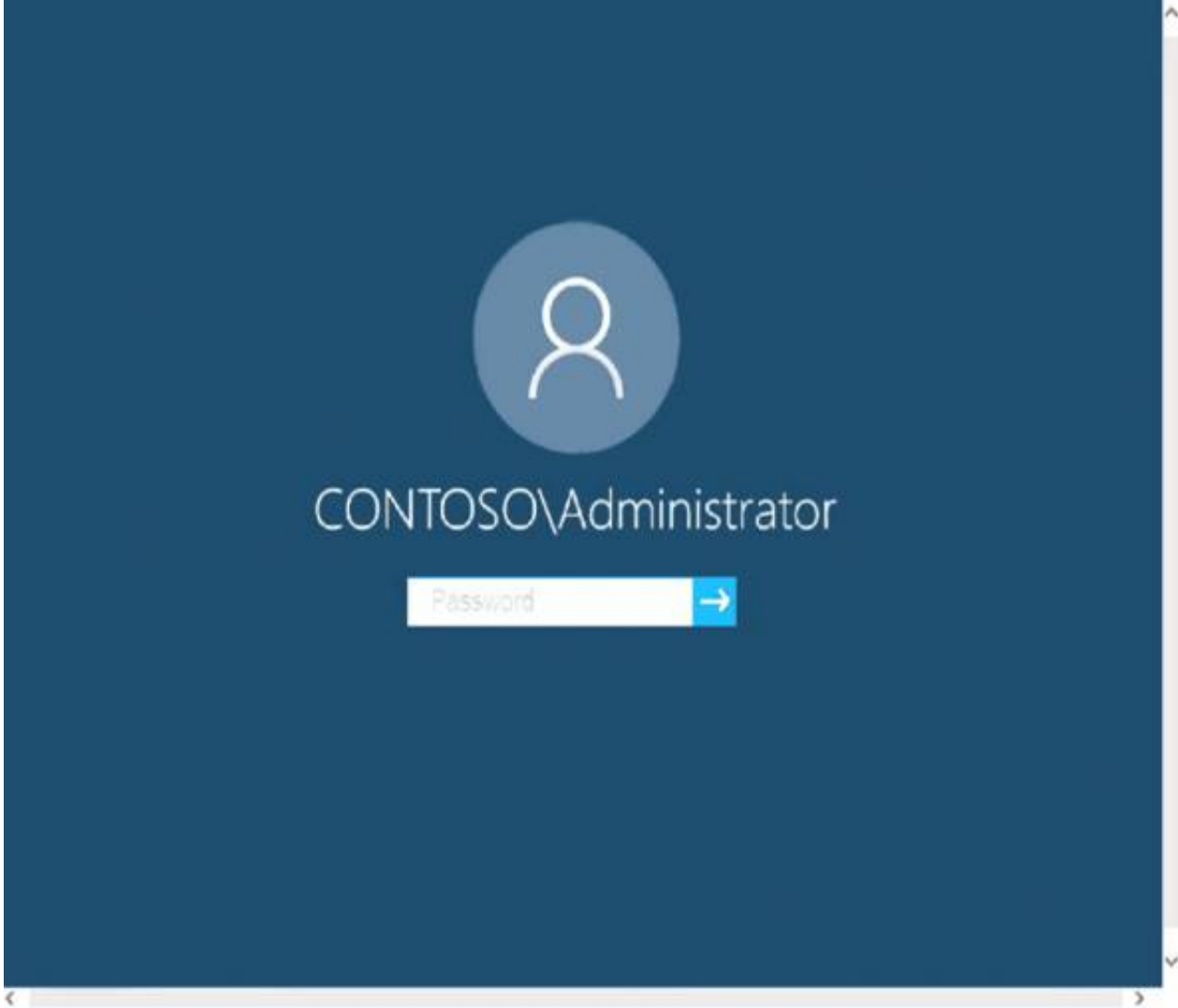
- A. Mastered
- B. Not Mastered

Answer: A

Explanation:
YES YES NO

NEW QUESTION 56

- (Exam Topic 4)
Please wait while the virtual machine loads. Once loaded, you may proceed to the lab section. This may take a few minutes, and the wait time will not be deducted from your overall test time.
When the Next button is available, click it to access the lab section. In this section, you will perform a set of tasks in a live environment. While most functionality will be available to you as it would be in a live environment, some functionality (e.g., copy and paste, ability to navigate to external websites) will not be possible by design.
Scoring is based on the outcome of performing the tasks stated in the lab. In other words, it doesn't matter how you accomplish the task, if you successfully perform it, you will earn credit for that task.
Labs are not timed separately, and this exam may more than one lab that you must complete. You can use as much time as you would like to complete each lab. But, you should manage your time appropriately to ensure that you are able to complete the lab(s) and all other sections of the exam in the time provided.
Please note that once you submit your work by clicking the Next button within a lab, you will NOT be able to return to the lab.
Username and password



Use the following login credentials as needed:
To enter your password, place your cursor in the Enter password box and click on the password below.
Username: Contoso/Administrator
Password: Passw0rd!
The following information is for technical support purposes only: Lab Instance: 11145882



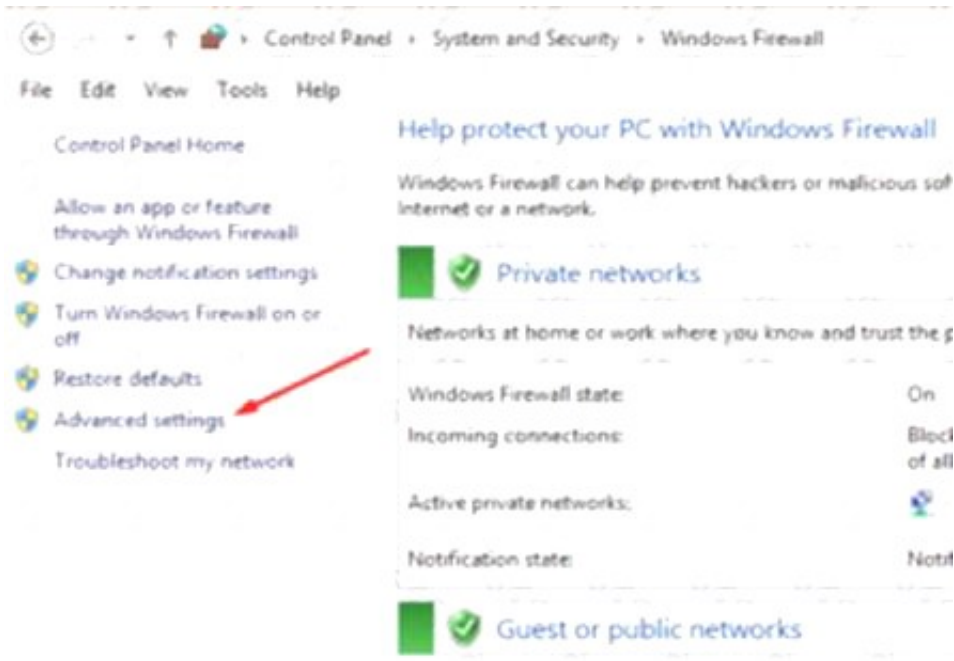
Administrators report that they cannot use Event Viewer to remotely view the event logs on Client3. You need to ensure that the administrators can access the event logs remotely on Client3. The solution must ensure that Windows Firewall remains enabled. To complete this task, sign in to the required computer or computers.

- A. Mastered
- B. Not Mastered

Answer: A

Explanation:

- * 1. Go to Control Panel -> System and Security -> Windows Firewall.
- * 2. Click on the Advanced settings link in the left-hand side.



* 3. Enable COM+ Network Access (DCOM-In).



* 4. Enable all the rules in the Remote Event Log Management group.



Reference:

<https://www.zubairalexander.com/blog/unable-to-access-event-viewer-on-a-remote-computer/>

NEW QUESTION 58

- (Exam Topic 4)

You plan to deploy Windows 10 Enterprise to company-owned devices. You capture a Windows 10 image file from a reference device.

You need to generate catalog files and answer files for the deployment.

What should you use for each file? To answer, select the appropriate options in the answer area.

NOTE: Each correct selection is worth one point.

Catalog file:

- Deployment Image Servicing and Management (DISM)
- Windows Configuration Designer
- Windows Deployment Services (WDS)
- Windows System Image Manager (Windows SIM)

Answer file:

- Deployment Image Servicing and Management (DISM)
- Windows Configuration Designer
- Windows Deployment Services (WDS)
- Windows System Image Manager (Windows SIM)

- A. Mastered
- B. Not Mastered

Answer: A

Explanation:

Graphical user interface, text, application Description automatically generated

References:

<https://docs.microsoft.com/en-us/windows-hardware/customize/desktop/wsim/open-a-windows-image-or-catalog>

NEW QUESTION 63

- (Exam Topic 4)

You are a network administrator at your company.

A user attempts to start a computer and receives the following error message: "Bootmgr is missing." You need to resolve the issue.

You start the computer in recovery mode.

Which command should you run next? To answer, select the appropriate options in the answer area.

NOTE: Each correct selection is worth one point.



- A. Mastered
- B. Not Mastered

Answer: A

Explanation:

References: https://neosmart.net/wiki/bootrec/#Bootrec_in_Windows10

NEW QUESTION 65

- (Exam Topic 4)

You have a file named Reg1.reg that contains the following content.

Windows Registry Editor Version 5.00

```
[HKEY_CLASSES_ROOT\Directory\Background\shell\Notepad]
```

```
[HKEY_CLASSES_ROOT\Directory\Background\shell\Notepad\command]
```

```
@="notepad.exe"
```

What is the effect of importing the file?

- A. A key named command will be renamed as notepad.exe.
- B. In a key named Notepad, the command value will be set to @="notepad.exe".
- C. In a key named command, the default value will be set to notepad.exe.

Answer: C

NEW QUESTION 70

- (Exam Topic 4)

You have an Azure Active Directory (Azure AD) tenant named contoso.com. You have a workgroup computer named Computer1 that runs Windows 10. You need to add Computer1 to contoso.com.

What should you use?

- A. Computer Management
- B. dsregcmd.exe
- C. the Settings app
- D. netdom.exe

Answer: C

Explanation:

You join a computer to a domain, including an Azure AD domain in the Settings panel in Windows 10, under System->About

References: <https://aadguide.azurewebsites.net/aadjoin/>

NEW QUESTION 72

- (Exam Topic 4)

Your network contains an Active Directory domain. The domain contains computers that run Windows 10. A user named Mia Hamm has a computer named Computer1. Mia Hamm reports that when she logs on to

Computer1, she cannot access servers on the network but she can access computers on the internet.

You run the ipconfig command on Computer1 and receive the following output.


```

Command Prompt

Ethernet adapter Ethernet:

    Connection-specific DNS Suffix  . : test.local
    Description . . . . . : Intel(R) Ethernet Connection (2) I218-V
    Physical Address. . . . . : 78-22-AF-D6-7C-93
    DHCP Enabled. . . . . : Yes
    Autoconfiguration Enabled . . . . : Yes
    Link-local IPv6 Address . . . . . : fe80::520:245f:638d:7ee6%19(Preferred)
    IPv4 Address. . . . . : 192.168.1.197(Preferred)
    Subnet Mask . . . . . : 255.255.255.0
    Lease Obtained. . . . . : Monday, 20 May 2019 08:31:40
    Lease Expires . . . . . : Wednesday, 23 May 2019 10:11:06
    Default Gateway . . . . . : 192.168.1.1
    DHCP Server . . . . . : 192.168.1.2
    DHCPv6 IAID . . . . . : 447488523
    DHCPv6 Client DUID. . . . . : 00-01-00-01-22-E2-A7-79-78-24-AF-8C-0C-9B
    DNS Servers . . . . . : 131.167.19.4
                          192.168.1.3

    Primary WINS Server . . . . . :
    NetBIOS over Tcpip. . . . . : Enabled
    
```

You successfully ping the default gateway, the DNS servers, and the DHCP server. You need to resolve the connectivity problem on Computer1. Which setting should you configure? To answer, select the appropriate options in the answer area.

Internet Protocol Version 4 (TCP/IPv4) Properties

General
Alternate Configuration

You can get IP settings assigned automatically if your network supports this capability. Otherwise, you need to ask your network administrator for the appropriate IP settings.

☒ Obtain an IP address automatically
☐ Use the following IP address:

IP address:
Subnet mask:
Default gateway:

☐ Obtain DNS server address automatically
☒ Use the following DNS server addresses:

Preferred DNS server: 131 . 167 . 19 . 4
Alternate DNS server: 192 . 168 . 1 . 3

☐ Validate settings upon exit
Advanced...

- A. Mastered
- B. Not Mastered

Answer: A

Explanation:

Graphical user interface Description automatically generated

The preferred DNS server is located on the internet as it has a public IP Address. The local DNS server should be the preferred DNS server. We could manually change the preferred and alternate DNS server addresses or we could select the "Obtain DNS server address automatically" option to have the DNS servers configured through DHCP.

NEW QUESTION 75

- (Exam Topic 4)

You have a computer named Computer1 that runs Windows 10.

The relevant services on Computer1 are shown in the following table.

Name	Startup type	Status	Dependent on
Service1	Automatic	Stopped	Service2, Service3
Service2	Automatic	Stopped	Service6
Service3	Disabled	Running	None
Service4	Disabled	Stopped	Service5
Service5	Automatic	Running	None
Service6	Manual	Stopped	None

Which service will start after you restart Computer1?

- A. Service3 and Services only
- B. Service 1, Setvice2. and Services
- C. Service2, Services, and Service6
- D. Services only

Answer: C

Explanation:

Service1 cannot start because it is dependent on Service3 which is disabled.

Service2 will start because it is set to Automatic. Service2 starting will cause Service6 to start. Service3 will not start because it is disabled.

Service4 will not start because it is disabled.

Service5 will start because it is set to Automatic and is not dependent on any other services. Service6 will start because Service2 is dependent on Service6.

NEW QUESTION 77

- (Exam Topic 4)

Your network contains an Active Directory domain. The domain contains a computer named Computer1 that runs Windows 10. Computer1 contains a folder named Folder1.

You plan to share Folder1. Everyone will have Read share permissions, and administrators will have Full control share permission.

You need to prevent the share from appearing when users browse the network. What should you do?

- A. Enable access-based enumeration.
- B. Deny the List NTFS permissions on Folded.
- C. Add Folded to a domain-based DFS namespace.
- D. Name the share Folded\$.

Answer: D

Explanation:

Appending a dollar sign to share name prevents a share from appearing when users browse the network.

NEW QUESTION 78

- (Exam Topic 4)

You have a computer that runs Windows 10. You view the domain services status as shown in the following exhibit.

```

+-----+
| Device state |
+-----+

AzureAdJoined : YES
EnterpriseJoined : NO
  deviceId : 0779e134-8056-482b-8922-f5b1d2bf3b98
  Thumbprint : 7463D0D1A8570055738E486ADD9A3A12E94F49AD
KeyContainerId : 847ec2a4-cb0f-48e8-ae5e-e25b10492e7c
KeyProvider : Microsoft Software Key Storage Provider
TpmProtected : NO
KeySignTest : MUST Run elevated to test.
  Idp : login.windows.net
  TenantId : 2f01a8b6-767b-4303-9797-30aff86e10da
  TenantName : Tailspin Toys
  AuthCodeUrl : https://login.microsoftonline.com/2f01a8b6-767b-4303-9797-30aff86e10da/oauth2/authorize
  AccessTokenUrl : https://login.microsoftonline.com/2f01a8b6-767b-4303-9797-30aff86e10da/oauth2/token
  MdmUrl : https://enrollment.manage.microsoft.com/enrollmentserver/discovery.svc
  MdmTouUrl : https://portal.manage.microsoft.com/TermsOfUse.aspx
  MdmComplianceUrl : https://portal.manage.microsoft.com/?portalAction=Compliance
  SettingsUrl :
  JoinSrvVersion : 1.0
  JoinSrvUrl : https://enterpriseregistration.windows.net/EnrollmentServer/device/
  JoinSrvId : urn:ms-drs:enterpriseregistration.windows.net
  KeySrvVersion : 1.0
  KeySrvUrl : https://enterpriseregistration.windows.net/EnrollmentServer/key/
  KeySrvId : urn:ms-drs:enterpriseregistration.windows.net
WebAuthNSrvVersion : 1.0
WebAuthNSrvUrl : https://enterpriseregistration.windows.net/webauthn/2f01a8b6-767b-4303-9797-30aff86e10da/
WebAuthNSrvId : urn:ms-drs:enterpriseregistration.windows.net
DeviceManagementSrvVersion : 1.0
DeviceManagementSrvUrl : https://enterpriseregistration.windows.net/manage/2f01a8b6-767b-4303-9797-30aff86e10da/
DeviceManagementSrvId : urn:ms-drs:enterpriseregistration.windows.net
DomainJoined : NO

+-----+
| User state |
+-----+

NgcSet : YES
NgcKeyId : {E8AAE4EB-55B0-4CE4-9971-684848BF72FA}
CanReset : DestructiveOnly
WorkplaceJoined : NO
WamDefaultSet : YES
WamDefaultAuthority : organizations
WamDefaultId : https://login.microsoft.com
WamDefaultGUID : {B16898C6-A148-4967-9171-64D755DA8520} (AzureAd)
AzureAdPrt : YES
AzurePrtAuthority : https://login.microsoftonline.com/2f01a8b6-767b-4303-9797-30aff86e10da
EnterprisePrt : NO
EnterprisePrtAuthority :

```

Use the drop-down menus to select the answer choice that completes each statement based on the information presented in the graphic.
NOTE: Each correct selection is worth one point.

Answer Area

Microsoft Edge is configured by using [answer choice].

▼

a Group Policy object (GPO)

Microsoft Intune

the Internet Explorer Administration Kit (IEAK)

The computer is [answer choice].

▼

enrolled in Microsoft Intune

managed by using Endpoint Configuration Manager

joined to an on-premises Active Directory domain

- A. Mastered
- B. Not Mastered

Answer: A

Explanation:

Device is Azure AD joined; not domain joined.

The MDM URLs in the exhibit indicate the device is enrolled in Intune. References:

<https://docs.microsoft.com/en-us/azure/active-directory/devices/troubleshoot-device-dsregcmd>

<https://github.com/MicrosoftLearning/MD-101T00-ManagingModernDesktops/blob/master/Instructions/Labs/04>

NEW QUESTION 83

- (Exam Topic 4)

You have a workgroup computer named Computer1 that runs Windows 10. Computer1 has the users accounts shown in the following table:

Name	Member of
User1	Administrators
User2	Users, Administrators
User3	Users

Computer1 has the local Group Policy shown in the following table.

Setting	Value
Startup script	ScriptA1
Shutdown script	ScriptA2
Logon script	ScriptA3
Logoff script	ScriptA4

You create the Local Computer\Administrators policy shown in the following table.

Setting	Value
Logon script	ScriptB1
Logoff script	ScriptB2

You create the Local Computer\Non-Administrators policy shown in the following table.

Setting	Value
Logon script	ScriptC1
Logoff script	ScriptC2

For each of the following statements, select Yes if the statement is true. Otherwise, select No.

Statements	Yes	No
If User1 shuts down Computer1, script ScriptA2 will run.	<input type="radio"/>	<input type="radio"/>
If User2 signs in to Computer1, scripts ScriptA3, ScriptB1, and ScriptC1 will run.	<input type="radio"/>	<input type="radio"/>
If User3 signs out of Computer1, scripts ScriptC2 and ScriptA4 will run.	<input type="radio"/>	<input type="radio"/>

- A. Mastered
 B. Not Mastered

Answer: A

Explanation:

Reference:

[https://docs.microsoft.com/en-us/previous-versions/windows/it-pro/windows-vista/cc766291\(v=ws.10\)](https://docs.microsoft.com/en-us/previous-versions/windows/it-pro/windows-vista/cc766291(v=ws.10))

NEW QUESTION 87

- (Exam Topic 4)

You have a computer named Computer1 that runs Windows 10.

Computer1 was off for one year. During that time, two feature updates and 12 quality updates were released.

From the Microsoft Update Catalog website, you download the missing updates and save the updates to Computer1.

You need to ensure that Computer1 runs the latest version of Windows 10 and is fully updated. The solution must minimize the amount of time required to update the computer.

What should you do?

- A. Install the last feature update, and then install the last quality update.
 B. Install the last quality update, and then install both feature updates.
 C. Install the last quality update, and then install the last feature update.
 D. Install the last feature update, and then install all the quality updates released after the feature update.
 E. Install all the quality and feature updates in the order in which they were released.

Answer: A

Explanation:

Reference:

<https://docs.microsoft.com/en-us/windows/deployment/update/get-started-updates-channels-tools>

NEW QUESTION 92

- (Exam Topic 4)

You have a computer that runs Windows 11 and has Windows Sandbox enabled.

You need to configure a Windows Sandbox environment. The solution must meet the following requirements:

- Support a virtual GPU.
- Mount the C:\Temp folder as read only.
- Prevent users from copying files to the sandbox by using the clipboard.

How should you complete the configuration file? To answer, drag the appropriate values to the correct targets. Each value may be used once, more than once, or not at all. You may need to drag the split bar between panes or scroll to view content.

Values

Default

Disable

Enable

False

True

Answer Area

```
<Configuration>
  <VGpu>  </VGpu>
  <Networking>Disable</Networking>
  <MappedFolders>
    <MappedFolder>
      <HostFolder>C:\temp</HostFolder>
      <ReadOnly>  </ReadOnly>
    </MappedFolder>
  </MappedFolders>
  <LogonCommand>
    <Command>C:\users\WDAGUtilityAccount\Desktop\Temp\startup.cmd</Command>
  </LogonCommand>
  <ProtectedClient>  </ProtectedClient>
  <ClipboardRedirection>Default</ClipboardRedirection>
  <MemoryInMB>6144</MemoryInMB>
</Configuration>
```

- A. Mastered
- B. Not Mastered

Answer: A

Explanation:

Answer Area

```
<Configuration>
  <VGpu>  </VGpu>
  <Networking>Disable</Networking>
  <MappedFolders>
    <MappedFolder>
      <HostFolder>C:\temp</HostFolder>
      <ReadOnly>  </ReadOnly>
    </MappedFolder>
  </MappedFolders>
  <LogonCommand>
    <Command>C:\users\WDAGUtilityAccount\Desktop\Temp\startup.cmd</Command>
  </LogonCommand>
  <ProtectedClient>  </ProtectedClient>
  <ClipboardRedirection>Default</ClipboardRedirection>
  <MemoryInMB>6144</MemoryInMB>
</Configuration>
```

NEW QUESTION 93

- (Exam Topic 4)

Your network contains an Active Directory domain named adatum.com. The domain contains two computers named Computer1 and Computer2 that run Windows 10.

The domain contains the user accounts shown in the following table.

Name	Member of
User1	Domain Admins
User2	Domain Users
User3	Domain Users

Computer2 contains the local groups shown in the following table.

Name	Members
Group1	ADATUM\User2 ADATUM\User3
Group2	ADATUM\User2
Group3	ADATUM\User3
Administrators	ADATUM\Domain Admins ADATUM\User3
Remote Desktop Users	Group1

The relevant user rights assignments for Computer2 are shown in the following table.

Policy	Security Setting
Allow log on through Remote Desktop Services	Administrators, Remote Desktop Users
Deny log on through Remote Desktop Services	Group2
Deny log on locally	Group3

For each of the following statements, select Yes if the statement is true. Otherwise, select No.

NOTE: Each correct selection is worth one point.

Statements	Yes	No
User1 can establish a Remote Desktop session to Computer2.	<input type="radio"/>	<input type="radio"/>
User2 can establish a Remote Desktop session to Computer2.	<input type="radio"/>	<input type="radio"/>
User3 can establish a Remote Desktop session to Computer2.	<input type="radio"/>	<input type="radio"/>

- A. Mastered
 B. Not Mastered

Answer: A

Explanation:

Box 1: Yes

User1 is an administrator and has the Allow log on through Remote Desktop Services.

Box 2: No

User2 is a member of Group2 which has the Deny log on through Remote Desktop Services. Box 3: Yes

User3 is a member of the administrators group and has the Allow log on through Remote Desktop Services.

Note: Deny permissions take precedence over Allow permissions. If a user belongs to two groups, and one of them has a specific permission set to Deny, that user is not able to perform tasks that require that permission even if they belong to a group that has that permission set to Allow.

References:

<https://docs.microsoft.com/en-us/azure/devops/organizations/security/about-permissions?view=azure-devops&ta>

NEW QUESTION 96

- (Exam Topic 4)

Note: This question is part of a series of questions that present the same scenario. Each question in the series contains a unique solution that might meet the stated goals. Some question sets might have more than one correct solution, while others might not have a correct solution.

After you answer a question in this section, you will NOT be able to return to it. As a result, these questions will not appear in the review screen.

A user named User1 has a computer named Computer1 that runs Windows 10. Computer1 is joined to an Azure Active Directory (Azure AD) tenant named contoso.com. User1 joins Computer1 to contoso.com by using user1@contoso.com.

Computer1 contains a folder named Folder1. Folder1 is in drive C and is shared as Share1. Share1 has the permission shown in the following table.

Group	Share permission
Everyone	Full control
AzureAD\user1@contoso.com	Owner

A user named User2 has a computer named Computer2 that runs Windows 10. User2 joins Computer2 to contoso.com by using user2@contoso.com.

User2 attempts to access Share1 and receives the following error message: "The username or password is incorrect."

You need to ensure that User2 can connect to Share1.

Solution: In Azure AD, you create a group named Group1 that contains User1 and User2. You grant Group1 Modify access to Folder1.

Does this meet the goal?

- A. Yes
 B. No

Answer: A

Explanation:

References:

<https://docs.microsoft.com/en-us/previous-versions/windows/it-pro/windows-server-2008-R2-and-2008/cc75417>

NEW QUESTION 100

- (Exam Topic 4)

You have the source files shown in the following table.

Source	Location
Custom Windows 10 image	D:\Folder1\Image1.wim
Windows 10 language pack DVD	E:\

You mount an image from Image1.wim to a folder named C:\Mount. You need to add the French language pack to the mounted image.

How should you complete the command? To answer, select the appropriate options in the answer area.

NOTE: Each correct selection is worth one point.

▼

Add-WindowsCapability
Add-WindowsFeature
Dism.exe
Setup.exe

/ Image:

▼

"C:\Mount"
"C:\Mount\Windows"
"C:\Windows"
"D:\Folder1\Image1.wim"

/Add-Package /PackagePath: "E:\x64\langpacks\Microsoft-Windows-Client-Language-Pack_x64_fr-fr.cab"

A. Mastered

B. Not Mastered

Answer: A

Explanation:

Note: The referenced document has the mount directory as C:\Mount\Windows. In this question, the mount directory is C:\Mount.

Reference:

<https://docs.microsoft.com/en-us/windows-hardware/manufacture/desktop/add-language-packs-to-windows>

NEW QUESTION 105

- (Exam Topic 4)

Note: This question is part of a series of questions that present the same scenario. Each question in the series contains a unique solution that might meet the stated goals. Some question sets might have more than one correct solution, while others might not have a correct solution.

After you answer a question in this section, you will NOT be able to return to it. As a result, these questions will not appear in the review screen.

A user named User1 has a computer named Computer1 that runs Windows 10. Computer1 is joined to an Azure Active Directory (Azure AD) tenant named contoso.com. User1 joins Computer1 to contoso.com by using user1@contoso.com.

Computer1 contains a folder named Folder1. Folder1 is in drive C and is shared as Share1. Share1 has the permission shown in the following table.

Group	Share permission
Everyone	Full control
AzureAD\user1@contoso.com	Owner

A user named User2 has a computer named Computer2 that runs Windows 10. User2 joins Computer2 to contoso.com by using user2@contoso.com.

User2 attempts to access Share1 and receives the following error message: "The username or password is incorrect."

You need to ensure that User2 can connect to Share1.

Solution: In Azure AD, you create a group named Group1 that contains User1 and User2. You grant Group1 Change access to Share1.

Does this meet the goal?

A. Yes

B. No

Answer: A

Explanation:

References:

<https://docs.microsoft.com/en-us/azure/storage/files/storage-files-active-directory-enable#assign-access-permiss>

NEW QUESTION 109

- (Exam Topic 4)

You have two computers named Client1 and Client2 that run Windows 10. You perform the following actions on Client1:

- Enable Hyper-V.
- Create a virtual machine named VM1 that runs Windows 10 Pro.
- Install a Microsoft SQL Server 2019 instance on VM1. You plan to deploy a copy of VM1 to Client2.

You need to create an export of VM1. The solution must ensure that the captured state is transactional^ consistent.

Which three PowerShell commands should you run in sequence on Client1? To answer, move the appropriate cmdlets from the list of cmdlets to the answer area and arrange them in the correct order.

Commands	Answer Area
Get-VMCheckpoint -VMName VM1	1 <input type="text"/>
Set-VM -Name VM1 -CheckpointType Production	2 <input type="text"/>
Checkpoint-VM Name VM1	3 <input type="text"/>
Restore-VMCheckpoint -Name VM1Checkpoint -Confirm:\$false	
Export-VMCheckpoint -VMName VM1 -Name VM1Checkpoint -Path C:\Export	

- A. Mastered
 B. Not Mastered

Answer: A

Explanation:

Commands	Answer Area
Get-VMCheckpoint -VMName VM1	Checkpoint-VM Name VM1
Set-VM -Name VM1 -CheckpointType Production	Restore-VMCheckpoint -Name VM1Checkpoint -Confirm:\$false
Checkpoint-VM Name VM1	Export-VMCheckpoint -VMName VM1 -Name VM1Checkpoint -Path C:\Export
Restore-VMCheckpoint -Name VM1Checkpoint -Confirm:\$false	
Export-VMCheckpoint -VMName VM1 -Name VM1Checkpoint -Path C:\Export	

NEW QUESTION 110

- (Exam Topic 4)

You have a computer named Computer1 that runs Windows 10.

You are troubleshooting Group Policy objects (GPOs) on Computer1.

You run gpresult /user user1 /v and receive the output shown in the following exhibit.

```

USER SETTINGS
-----
Last time Group Policy was applied: 11/11/2018 at 8:20:07 AM
Group Policy was applied from: N/A
Group Policy slow link threshold: 500 kbps
Domain Name: COMPUTER1
Domain Type: <Local Computer>

Applied Group Policy Objects
-----
Local Group Policy/user1
Local Group Policy

The user is a part of the following security groups
-----
High Mandatory Level
Everyone
Local account and member of Administrators group
BUILTIN\Administrators
BUILTIN\Users
Performance Log Users
NT AUTHORITY\INTERACTIVE
CONSOLE LOGON
NT AUTHORITY\Authenticated Users
This Organization
Local account
LOCAL
Cloud Account Authentication
  
```

Use the drop-down menus to select the answer choice that completes each statement based on the information presented in the graphic.
 NOTE: Each correct selection is worth one point.

[Answer choice] applied to
User1

▼

One local GPO is

One domain GPO and one local GPO are

Two local GPOs are

Two domain GPOs are

To configure GPO settings
that affect only User1, you
must first [answer choice]

▼

open the Local Group Policy Editor console

open the Group Policy Management console

add the Group Policy Object Editor snap-in to a console

- A. Mastered
- B. Not Mastered

Answer: A

Explanation:

References:

<https://www.windowscentral.com/how-apply-local-group-policy-settings-specific-users-windows-10>

NEW QUESTION 115

- (Exam Topic 4)

You have a computer named Computer1 that runs Windows 10. You deploy an application named Application1 to Computer1. You need to assign credentials to Application1.

You need to meet the following requirements:

- Ensure that the credentials for Application1 cannot be used by any user to log on to Computer1.
- Ensure that the principle of least privilege is maintained.

What should you do?

- A. Configure Application1 to sign in as the Local System account and select the Allow service to interact with desktop check box.
- B. Create a user account for Application1 and assign that user account the Deny log on locally user right
- C. Create a user account for Application1 and assign that user account the Deny log on as a service user right
- D. Configure Application1 to sign in as the Local Service account and select the Allow service to interact with desktop check box.

Answer: B

Explanation:

Reference:

<https://docs.microsoft.com/en-us/windows/security/threat-protection/security-policy-settings/deny-log-on-locall>

NEW QUESTION 119

- (Exam Topic 4)

Note: This question is part of a series of questions that present the same scenario. Each question in the series contains a unique solution that might meet the stated goals. Some question sets might have more than one correct solution, while others might not have a correct solution.

After you answer a question in this section, you will NOT be able to return to it. As a result, these questions will not appear in the review screen.

You have a workgroup computer that runs Windows 10. The computer contains the local user accounts shown in the following table.

Name	Member of
Administrator	Administrators
User1	Administrators
User2	Users
User3	Users

You need to configure the desktop background for User1 and User2 only.

Solution: You create two new local Group Policy Objects (GPOs) and apply one GPO to User1 and the other GPO to User2. You configure the Desktop Wallpaper setting in each GPO.

Does this meet the goal?

- A. Yes
- B. No

Answer: A

Explanation:

Reference:

<https://www.windowscentral.com/how-apply-local-group-policy-settings-specific-users-windows-10>

NEW QUESTION 120

- (Exam Topic 4)

You have 100 computers that run Windows 10 and are members of an Active Directory domain.

Two support technicians named Tech1 and Tech2 will be responsible for monitoring the performance of the computers.

You need to configure the computers to meet the following requirements:

- Ensure that Tech1 can create and manage Data Collector Sets (DCSs).
- Ensure that Tech2 can start and stop the DCSs.
- Use the principle of least privilege.

To which group should you add each technician? To answer, select the appropriate options in the answer area.

NOTE: Each correct selection is worth one point.

Answer Area

Tech1:

Tech2:

- A. Mastered
- B. Not Mastered

Answer: A

Explanation:

Reference:

<https://docs.microsoft.com/en-us/windows/security/identity-protection/access-control/active-directory-security-g>

NEW QUESTION 124

- (Exam Topic 4)

Note: This question is part of a series of questions that present the same scenario. Each question in the series contains a unique solution that might meet the stated goals. Some question sets might have more than one correct solution, while others might not have a correct solution.

After you answer a question in this section, you will NOT be able to return to it. As a result, these questions will not appear in the review screen.

You manage devices that run Windows 10.

Ten sales users will travel to a location that has limited bandwidth that is expensive. The sales users will be at the location for three weeks.

You need to prevent all Windows updates from downloading for the duration of the trip. The solution must not prevent access to email and the Internet.

Solution: From Accounts in the Settings app, you turn off Sync settings. Does this meet the goal?

- A. Yes
- B. No

Answer: B

NEW QUESTION 125

- (Exam Topic 4)

You have a computer named Computer1 that runs Windows 10.

From Event Viewer on Computer1, you have a task named Action1 that is attached to the following event: ➤ Log: System

- Source: Kernel-General
- Event ID: 16

You need to modify the settings of Action1. What should you use?

- A. the Settings app
- B. Task Scheduler
- C. Event Viewer
- D. System Configuration

Answer: C

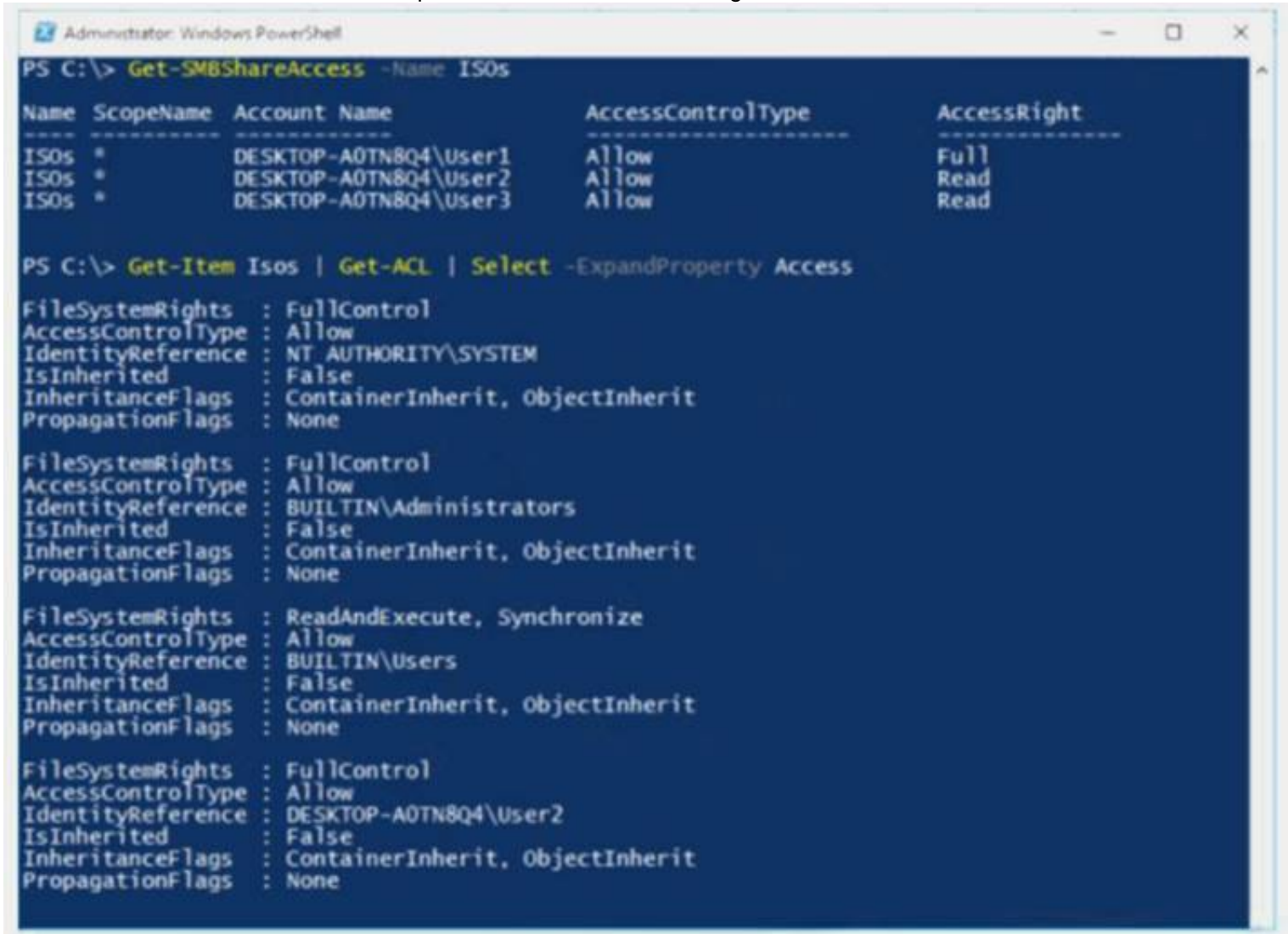
Explanation:

An Event Viewer task is created and modified in Event Viewer. References:

<https://www.techrepublic.com/article/how-to-use-custom-views-in-windows-10s-event-viewer/>

NEW QUESTION 128

- (Exam Topic 4)
You have a computer that runs Windows 10. The computer contains a folder named C:\ISOs that is shared in ISOs. You run several commands on the computer as shown in the following exhibit.



Use the drop-down menus to select the answer choice that completes each statement based on the information presented in the graphic.
NOTE: Each correct selection is worth one point.

[answer choice] can delete files in the ISOs share.

None of the users

Only User1

Only User2

Only User3

Only User1 and User2

Only User1 and User3

Only User2 and User3

User1, User2, and User3

[answer choice] can read the files in the ISOs share.

None of the users

Only User1

Only User2

Only User3

Only User1 and User2

Only User1 and User3

Only User2 and User3

User1, User2, and User3

- A. Mastered
- B. Not Mastered

Answer: A

Explanation:

[answer choice] can delete files in the ISOs share.

▼

None of the users
Only User1
Only User2
Only User3
Only User1 and User2
Only User1 and User3
Only User2 and User3
User1, User2, and User3

[answer choice] can read the files in the ISOs share.

▼

None of the users
Only User1
Only User2
Only User3
Only User1 and User2
Only User1 and User3
Only User2 and User3
User1, User2, and User3

NEW QUESTION 133

- (Exam Topic 4)

You have four computers that run Windows 10. The computers are configured as shown in the following table.

Name	Member of
Computer1	Workgroup named WG1
Computer2	Workgroup named WG1
Computer3	Workgroup named WG2
Computer4	Active Directory domain named contoso.com

On Computer1, you create a user named User1. In the domain, you create a user named User2. You create the groups shown in the following table.

Name	Created on/in
Group3	Computer3
Group4	Computer4
Group5	Contoso.com

You need to identify to which computers User1 can sign in, and to which groups you can add User2.

What should you identify? To answer, select the appropriate options in the answer area.

NOTE: Each correct selection is worth one point.

User1 can sign in to:

▼

Computer1 only
Computer1 and Computer2 only
Computer1, Computer2, and Computer3 only
Computer1, Computer2, and Computer4 only
Computer1, Computer2, Computer3, and Computer4

You can add User2 to:

▼

Group5 only
Group4 and Group5 only
Group3, Group4, and Group5

- A. Mastered
- B. Not Mastered

Answer: A

Explanation:

Box 1: Computer 1 only.

User1's account was created on Computer1. The account is a local account on Computer1. Therefore, User1 can only sign in to Computer1.

Box 2: Group5 only.

User2's account was created in the domain. A domain is a security boundary. Therefore, you can only add User2 to groups in the domain.

NEW QUESTION 136

- (Exam Topic 4)

Note: This question is part of a series of questions that present the same scenario. Each question in the series contains a unique solution that might meet the stated goals. Some question sets might have more than one correct solution, while others might not have a correct solution.

After you answer a question in this section, you will NOT be able to return to it. As a result, these questions will not appear in the review screen.

You have a computer that runs Windows 10. The computer contains a folder named D:\Scripts. D:\Scripts

contains several PowerShell scripts.

You need to ensure that you can run the PowerShell scripts without specifying the full path to the scripts. The solution must persist between PowerShell sessions.

Solution: From PowerShell, you run `$env:Path += ";d:\scripts"`. Does this meet the goal?

A. Yes

B. No

Answer: A

Explanation:

References:

https://docs.microsoft.com/en-us/powershell/module/microsoft.powershell.core/about/about_environment_varia

NEW QUESTION 137

- (Exam Topic 4)

You sign in to a computer that runs Windows 10 Pro.

You need to ensure that after a restart, the computer starts automatically in Safe Mode with Networking. What should you use to configure the restart options?

A. bootcfg

B. BCDEdit

C. Windows System Image Manager (Windows SIM)

D. bootrec

Answer: B

Explanation:

Reference:

<https://www.lifewire.com/how-to-force-windows-to-restart-in-safe-mode-2625163>

NEW QUESTION 142

- (Exam Topic 4)

Your network contains an Active Directory domain. The domain contains computers that run Windows 10. You need to provide a user with the ability to remotely create and modify shares on the computers. The solution must use the principle of least privilege.

To which group should you add the user?

A. Power Users

B. Remote Management Users

C. Administrators

D. Network Configuration Operators

Answer: C

NEW QUESTION 144

- (Exam Topic 4)

Your network contains an Active Directory domain that is synced to a Microsoft Azure Active Directory (Azure AD) tenant.

Your company purchases a Microsoft 365 subscription.

You need to migrate the Documents folder of users to Microsoft OneDrive for Business. What should you configure?

A. One Drive Group Policy settings

B. roaming user profiles

C. Enterprise State Roaming

D. Folder Redirection Group Policy settings

Answer: A

Explanation:

References:

<https://docs.microsoft.com/en-us/onedrive/redirect-known-folders?redirectSourcePath=%252fen-us%252farticle%252fredirect-windows-known-folders-to-onedrive-e1b3963c-7c6c-4694-9f2f-fb8005d9ef12>

NEW QUESTION 147

- (Exam Topic 4)

You have a computer that runs Windows 10 and hosts four Hyper-V virtual machines that run Windows 10. You upgrade the computer to Windows 11.

You need to ensure that the virtual machines support hibernation. What should you do?

A. Update the configuration version of the virtual machines.

B. Enable integration services.

C. Rebuild the virtual machines as generation 2 virtual machines.

D. Delete any virtual machine checkpoints.

Answer: A

NEW QUESTION 150

- (Exam Topic 4)

Please wait while the virtual machine loads. Once loaded, you may proceed to the lab section. This may take a few minutes, and the wait time will not be deducted from your overall test time.

When the Next button is available, click it to access the lab section. In this section, you will perform a set of tasks in a live environment. While most functionality will be available to you as it would be in a live

environment, some functionality (e.g., copy and paste, ability to navigate to external websites) will not be possible by design.

Scoring is based on the outcome of performing the tasks stated in the lab. In other words, it doesn't matter how you accomplish the task, if you successfully perform it, you will earn credit for that task.

Labs are not timed separately, and this exam may more than one lab that you must complete. You can use as much time as you would like to complete each lab.

But, you should manage your time appropriately to ensure that you are able to complete the lab(s) and all other sections of the exam in the time provided.

Please note that once you submit your work by clicking the Next button within a lab, you will NOT be able to return to the lab.

Username and password



Use the following login credentials as needed:

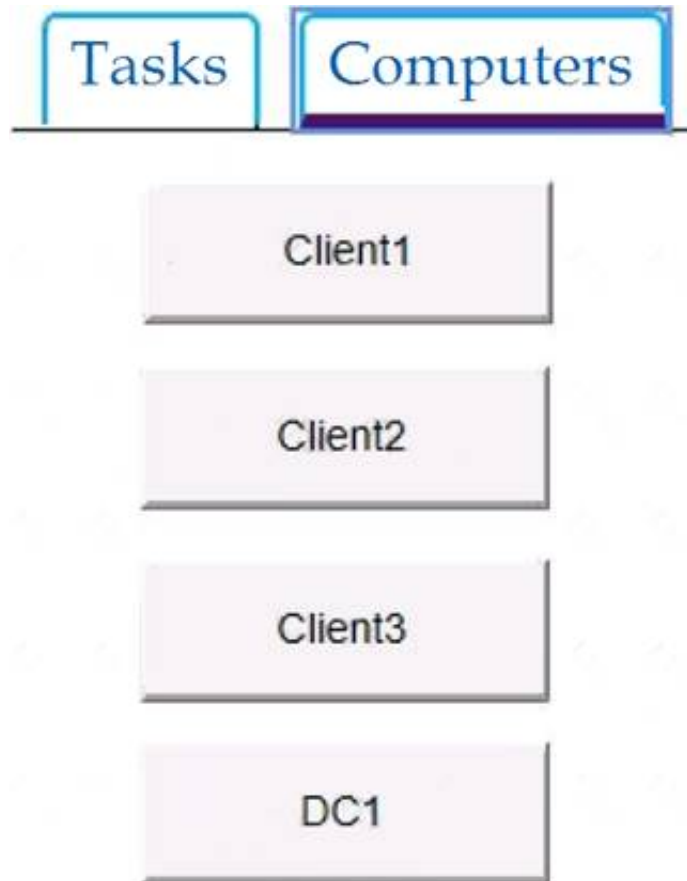
To enter your password, place your cursor in the Enter password box and click on the password below.

Username: Contoso/Administrator

Password: Passw0rd!

The following information is for technical support purposes only:

Lab Instance: 10921597



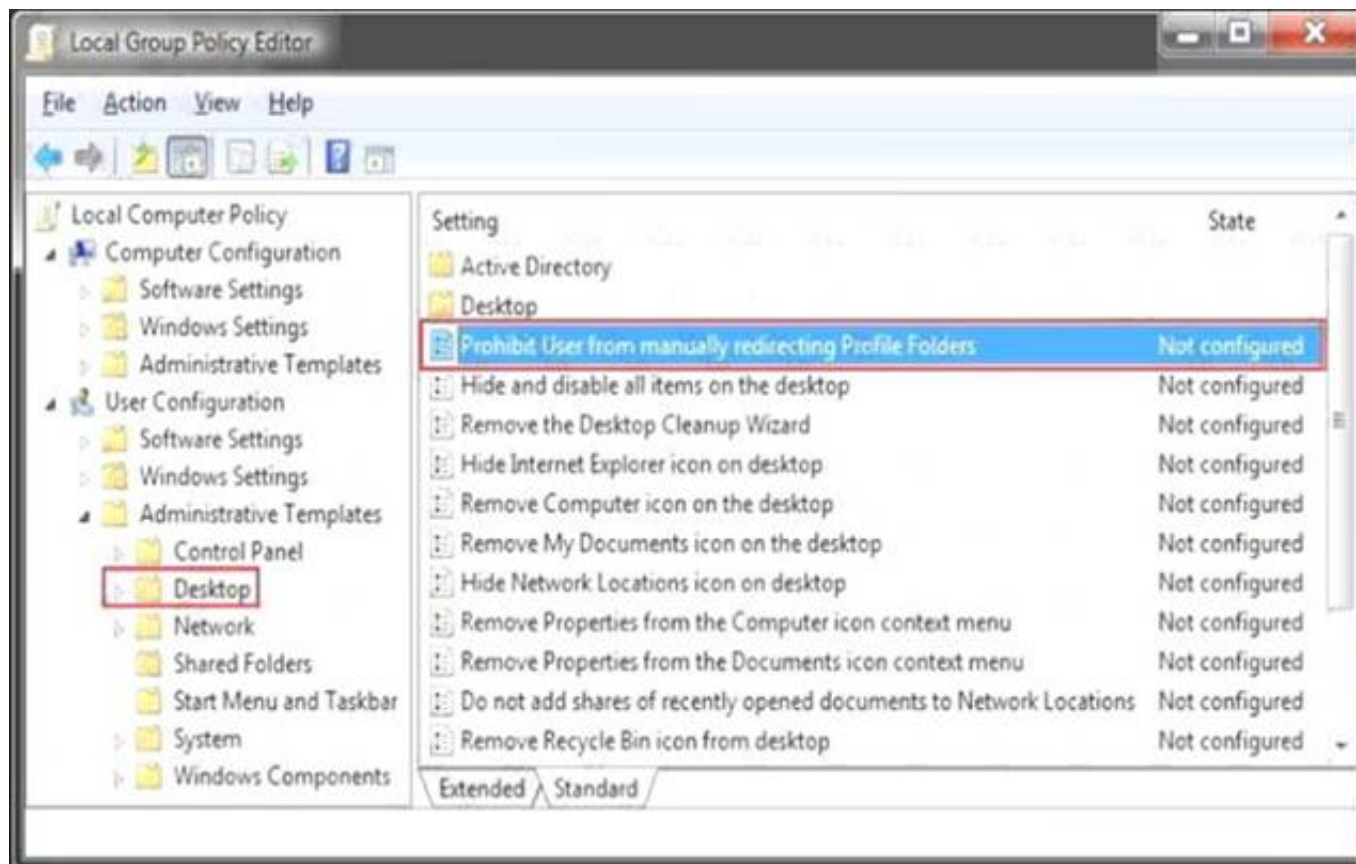
You need to enable the Prohibit User from manually redirecting Profile Folders Group Policy setting only for the administrative users of Client3. To complete this task, sign in to the required computer or computers.

- A. Mastered
- B. Not Mastered

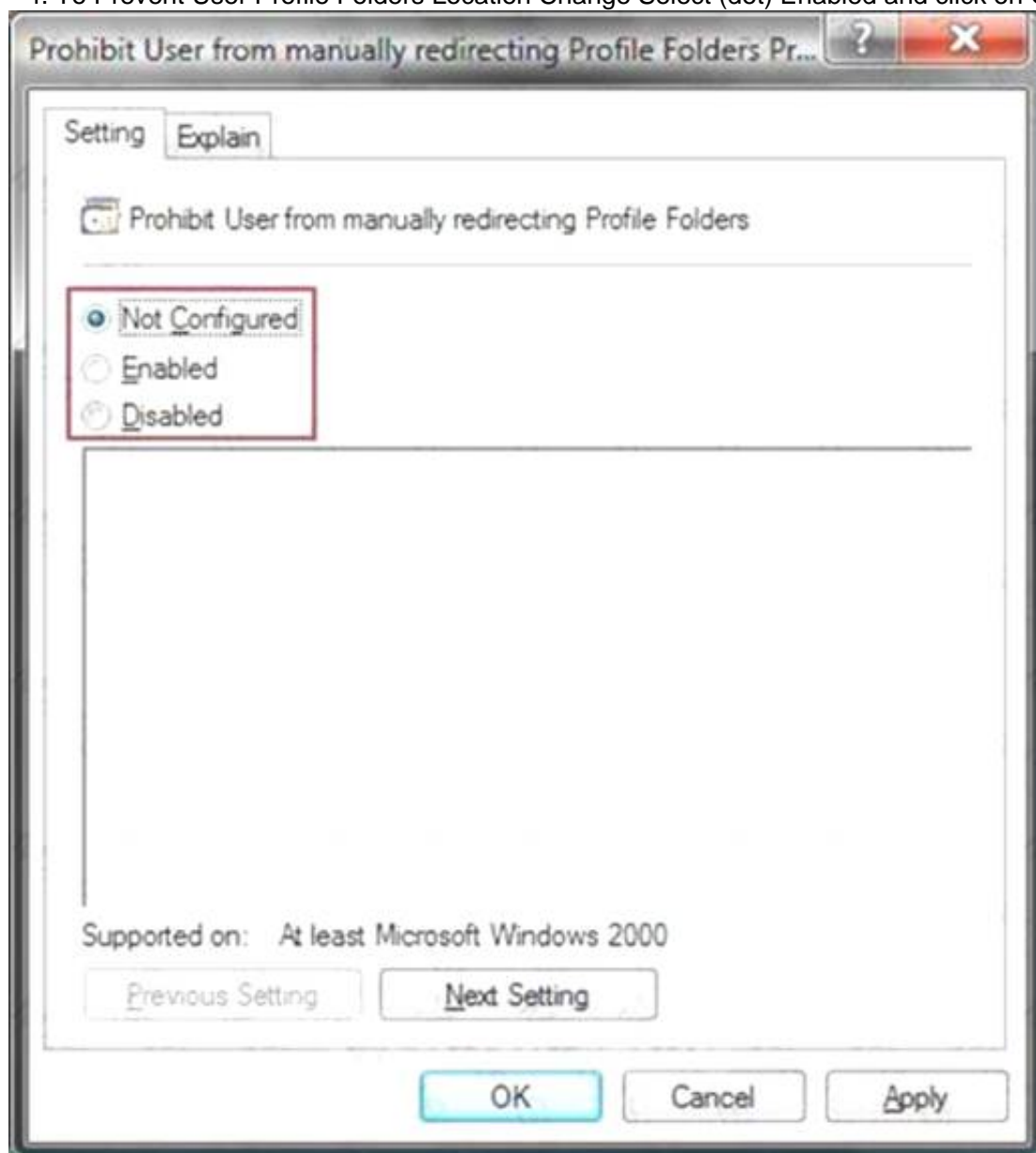
Answer: A

Explanation:

- * 1. Open the Administrator Group Local Group Policy Editor.
- * 2. In the left pane, click on User Configuration, Administrative Templates, and Desktop.



- * 3. In the right pane, right click on Prohibit User from Manually redirecting Profile Folders and click on Properties.
- * 4. To Prevent User Profile Folders Location Change Select (dot) Enabled and click on OK.



- * 5. Close the Local Group Policy Editor window. References:
<https://www.vistax64.com/threads/user-profile-folders-prevent-or-allow-location-change.180719/>

NEW QUESTION 151

- (Exam Topic 3)

For each of the following statements, select Yes if the statement is true. Otherwise, select No.

NOTE: Each correct selection is worth one point.

Statements	Yes	No
When User1 attempts to open D:\Folder1\Report.docx, an event is created in the security event log.	<input type="radio"/>	<input type="radio"/>
When User1 attempts to save changes to D:\Folder1\Report.docx, an event is created in the security event log.	<input type="radio"/>	<input type="radio"/>
When User2 attempts to open D:\Folder1\Report.docx, an event is created in the security event log.	<input type="radio"/>	<input type="radio"/>

- A. Mastered
B. Not Mastered

Answer: A

Explanation:
Graphical user interface, text, application, email Description automatically generated
Reference:
<https://www.sciencedirect.com/topics/computer-science/security-event-log>

NEW QUESTION 153
- (Exam Topic 3)
You implement the planned changes for Computer1.
For each of the following statements, select Yes if the statement is true. Otherwise, select No.
NOTE: Each correct selection is worth one point.

Statements	Yes	No
User1 can write to D:\Folder1\Report.docx.	<input type="radio"/>	<input type="radio"/>
User2 can write to D:\Folder1\Report.docx.	<input type="radio"/>	<input type="radio"/>
User3 can write to D:\Folder1\Report.docx.	<input type="radio"/>	<input type="radio"/>

- A. Mastered
B. Not Mastered

Answer: A

Explanation:
A screenshot of a computer Description automatically generated with low confidence
Box 1: Yes
User1 already has full control access through membership of Group1. Therefore, User1 can write to the file. Box 2: No
The planned changes will grant User2 full control access to the file. However, User2 is a member of Group2 which has Deny/Write access. The Deny permission will always take precedence. Therefore, User2 will not be able to write to the file.
Box 3: No
The planned changes will grant User3 full control access to the folder. That permission will be inherited by the file. However, User3 is a member of Group2 which has Deny/Write access. The Deny permission will always take precedence. Therefore, User3 will not be able to write to the file.

NEW QUESTION 155
- (Exam Topic 2)
You need to meet the technical requirements for the helpdesk users.
What should you do? To answer, select the appropriate options in the answer area. NOTE: Each correct selection is worth one point.

Answer Area

Add the help desk users to:

▼
The local Administrators group on the Windows 10 computers
The Domain Computrers group in the domain group
The Event Log Readers group in the domain group
The local Event Log Readers group on the Windows 10 computers
The Group Policy Creators Owners group in the domain group
The local Power Users group on the Windows 10 computers

Troubleshooting tool that the helpdesk users should use:

▼
Get-GPOReport
GPRresult
GPOUpdate
Group Policy Object Editor

- A. Mastered
- B. Not Mastered

Answer: A

Explanation:

References:

<https://www.itprotoday.com/compute-engines/what-group-policy-creator-owners-group>

NEW QUESTION 158

- (Exam Topic 2)

You need to meet the technical requirements for the San Diego office computers. Which Windows 10 deployment method should you use?

- A. wipe and load refresh
- B. Windows Autopilot
- C. provisioning Packages
- D. in-place upgrade

Answer: B

Explanation:

References:

<https://docs.microsoft.com/en-us/windows/deployment/windows-autopilot/windows-autopilot>

NEW QUESTION 159

- (Exam Topic 1)

You need to sign in as LocalAdmin on Computer11. What should you do first?

- A. From the LAPS UI tool, view the administrator account password for the computer object of Computer11.
- B. From Local Security Policy, edit the policy password settings on Computer11.
- C. From the LAPS UI tool, reset the administrator account password for the computer object of Computer11.
- D. From Microsoft Intune, edit the policy password settings on Computer11.

Answer: A

Explanation:

References:

<https://technet.microsoft.com/en-us/mt227395.aspx>

NEW QUESTION 160

- (Exam Topic 1)

An employee reports that she must perform a BitLocker recovery on her laptop. The employee does not have her BitLocker recovery key but does have a Windows 10 desktop computer.

What should you instruct the employee to do from the desktop computer?

- A. Run the manage-bde.exe –status command
- B. From BitLocker Recovery Password Viewer, view the computer object of the laptop
- C. Go to <https://account.activedirectory.windowsazure.com> and view the user account profile
- D. Run the Enable-BitLockerAutoUnlock cmdlet

Answer: C

Explanation:

References:

<https://celedonpartners.com/blog/storing-recovering-bitlocker-keys-azure-active-directory/>

NEW QUESTION 165

- (Exam Topic 4)

You are troubleshooting a Windows 10 device that fails to install updates from Windows Update. You discover that some files in the component store are corrupt. You need to resolve the issue to ensure that you can install the updates. Which command should you run?

- A. `chkdsk /c c:`
- B. `Dism /Online /Cleanup-Image /RestoreHealth`
- C. `Dism /Online /Cleanup-Image /StartComponentCleanup`
- D. `chkntfs /c c:`

Answer: B

NEW QUESTION 169

- (Exam Topic 4)

Your network contains an Active Directory domain. The domain contains 1,000 computers that run Windows 10.

You configure Microsoft Edge settings by using domain and local Group Policy Objects (GPOs).

You need to generate a report that contains all the Microsoft Edge policy settings applied to a computer. What should you do?

- A. From Microsoft Edge, open `edge://settings`.
- B. From a command prompt, run `scanstate` and specify the `/apps` parameter.
- C. From a command prompt, run `scanstate` and specify the `/genconfig` parameter.
- D. From a command prompt, run `gpreresult` and specify the `/H` parameter.

Answer: D

NEW QUESTION 174

- (Exam Topic 4)

Note: This question is part of a series of questions that present the same scenario. Each question in the series contains a unique solution that might meet the stated goals. Some question sets might have more than one correct solution, while others might not have a correct solution.

After you answer a question in this section, you will NOT be able to return to it. As a result, these questions will not appear in the review screen.

You deploy Windows 10 to a computer named Computer1.

Computer1 contains a folder named C:\Folder1. Folder1 contains multiple documents.

You need to ensure that you can recover the files in Folder1 by using the Previous Versions tab. Solution: You enable File History and add Folder1 in the Documents library.

Does this meet the goal?

- A. Yes
- B. No

Answer: A

Explanation:

Reference:

<https://support.microsoft.com/en-za/help/17128/windows-8-file-history>

NEW QUESTION 179

- (Exam Topic 4)

You enable controlled folder access in audit mode for several computers that run Windows 10. You need to review the events audited by controlled folder access. Which Event Viewer log should you view?

- A. Applications and Services\Microsoft\Windows\Windows Defender\Operational
- B. Applications and Services\Microsoft\Windows\Known Folders\Operational
- C. Windows\Security

Answer: A

Explanation:

<https://docs.microsoft.com/en-us/microsoft-365/security/defender-endpoint/evaluate-controlled-folder-access>

NEW QUESTION 180

- (Exam Topic 4)

A user named User1 has a computer named Computer1 that runs Windows 10.

User1 connects to a Microsoft Azure virtual machine named VM1 by using Remote Desktop. User1 creates a VPN connection to a partner organization.

When the VPN connection is established, User1 cannot connect to VM1. When User1 disconnects from the VPN, the user can connect to VM1.

You need to ensure that User1 can connect to VM1 while connected to the VPN. What should you do?

- A. From the proxy settings, add the IP address of VM1 to the bypass list to bypass the proxy.
- B. From the properties of VPN1, clear the Use default gateway on remote network check box.
- C. From the properties of the Remote Desktop connection to VM1, specify a Remote Desktop Gateway (RDGateway).
- D. From the properties of VPN1, configure a static default gateway address.

Answer: B

Explanation:

References:

<https://www.stevejenkins.com/blog/2010/01/using-the-local-default-gateway-with-a-windows-vpn-connection/>

NEW QUESTION 182

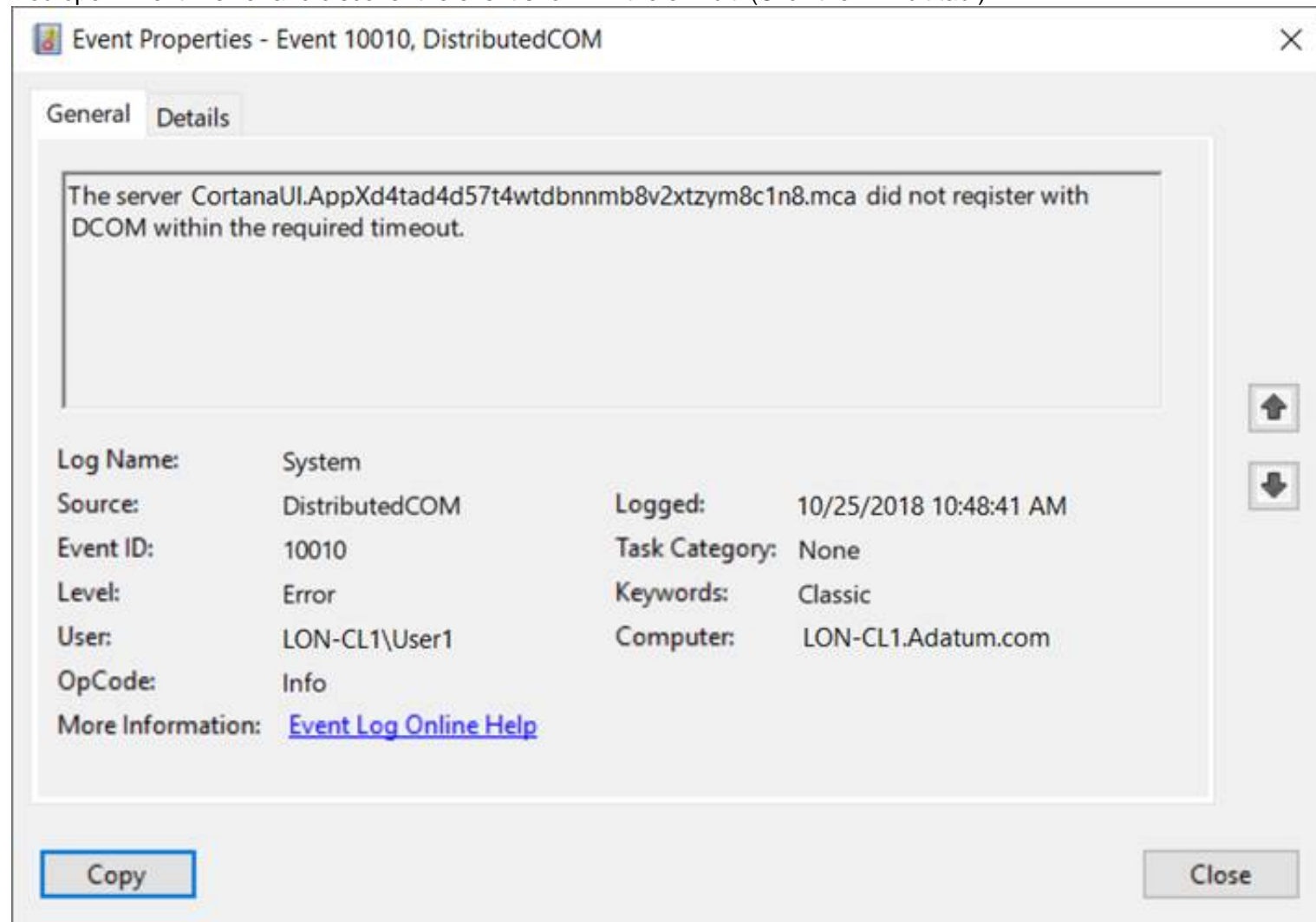
- (Exam Topic 4)

You have a computer named LON-CL1.Adatum.com that runs Windows 10.

From Event Viewer, you create a custom view named View1 that has the following filter:

- > User: User1
- > Logged: Any time
- > Event logs: System
- > Computer: LON-CL1
- > Event IDs: 10000 – 11000
- > Event level: Error, Verbose

You open Event Viewer and discover the event shown in the exhibit. (Click the Exhibit tab.)



The event does not appear in View1.

You need to ensure that the event appears in View1. What should you do?

- A. Add a Task Category setting to the filter.
- B. Add the computer account to the Event Log Readers group.
- C. Create an event subscription.
- D. Modify the Computer setting in the filter.

Answer: A

Explanation:

References:

<https://www.techrepublic.com/article/how-to-use-custom-views-in-windows-10s-event-viewer/>

NEW QUESTION 184

- (Exam Topic 4)

Your network contains the segments shown in the following table.

Name	IP address space	Covered by DHCP	Next available IP address
Segment1	172.16.0.0/24	Yes	172.16.0.58
Segment2	192.168.1.0/24	No	<i>Not applicable</i>

You have a computer that runs Windows 10.

The network interface of the computer is configured as shown in the exhibit. (Click the Exhibit tab.)

You need to identify which IP address the computer will have on the network when the computer connects to the segments. Which IP address should you identify for each segment? To answer, select the appropriate options in the answer area.
 NOTE: Each correct selection is worth one point.

Segment1: ▼

172.16.0.10
172.16.0.58
An address that starts with 169.254

Segment2: ▼

172.16.0.10
172.16.0.58
An address that starts with 169.254
An address that starts with 192.168.1

- A. Mastered
- B. Not Mastered

Answer: A

Explanation:

Segment1: ▼

172.16.0.10
172.16.0.58
An address that starts with 169.254

Segment2: ▼

172.16.0.10
172.16.0.58
An address that starts with 169.254
An address that starts with 192.168.1

NEW QUESTION 188

- (Exam Topic 4)

Your company has a computer named Computer1 that runs Windows 10. Computer1 is used to provide guests with access to the Internet. Computer1 is a member of a workgroup.
 You want to configure Computer1 to use a user account sign in automatically when the computer is started. The user must not be prompted for a user name and password.
 What should you do?

- A. Configure Group Policy preferences.
- B. Run the BCDBoot command.
- C. Edit the Registry.
- D. Run the MSConfig command.

Answer: C

Explanation:

In the registry, add a default user name and a default password in the HKEY_LOCAL_MACHINE\SOFTWARE\Microsoft\Windows NT\CurrentVersion\Winlogon sbukey.

Reference:

<https://support.microsoft.com/en-us/help/324737/how-to-turn-on-automatic-logon-in-windows>

NEW QUESTION 191

- (Exam Topic 4)

Your company has an on-premises network that contains an Active Directory domain. The domain is synced to Microsoft Azure Active Directory (Azure AD). All computers in the domain run Windows 10 Enterprise. You have a computer named Computer1 that has a folder named Folder1.

You must provide users in group named Group1 with the ability to view the list of files in Folder1. Your solution must ensure that the principle of least privilege is maintained.

What should you do?

- A. Assign the Full control permissions for the Folder1 folder to Group1.
- B. Assign the Read permissions for the Folder1 folder to Group1.
- C. Assign the List folder permissions for the Folder1 folder to Group1.
- D. Assign the Take ownership permissions for the Folder1 folder to Group1.

Answer: C

Explanation:

Reference:

<https://www.online-tech-tips.com/computer-tips/set-file-folder-permissions-windows/>

NEW QUESTION 195

- (Exam Topic 4)

You have a computer named Computer1 that runs Windows 10 and has the users shown in the following table.

Name	Member of
User1	Users, Group1
User2	Administrators

Computer1 contains the folders shown in the following table.

Name	Path	Permission	Share permission
Folder1	D:\Folder1	Administrators: Full control Group1: Read	Group1: Full control
Folder2	E:\Folder2	Administrators: Full control	None

You move Folder1 into Folder2.

For each of the following statements, select Yes if the statement is true. Otherwise, select No.

NOTE: Each correct selection is worth one point.

Statements	Yes	No
User1 can connect to Folder1 by using a path of \\Computer1\Folder1 UNC.	<input type="radio"/>	<input type="radio"/>
User1 can read the content in E:\Folder2\Folder1 when the user signs in to Computer1.	<input type="radio"/>	<input type="radio"/>
User2 can connect to Folder1 by using a path of \\Computer1\E\$\Folder2\Folder1 UNC.	<input type="radio"/>	<input type="radio"/>

- A. Mastered
- B. Not Mastered

Answer: A

Explanation:

Box 1: No

If you move a shared folder, the share will no longer work.

Box 2: No

Folder1 will inherit the permissions of Folder2. User1 does not have permission to access Folder2. Box 3: Yes

User2 is a member of the Administrators group so he can access the administrative share \\Computer1\E\$. User2 has Full Control permission to Folder2 so he can access \\Computer1\E\$\Folder2.

Folder1 will inherit the permissions of Folder2 so User2 can access \\Computer1\E\$\Folder2\Folder1.

NEW QUESTION 196

- (Exam Topic 4)

You have computers that run Windows 11 as shown in the following table.

Name	IP address	Joined to
Computer1	192.168.10.10	Active Directory
Computer2	192.168.10.15	Workgroup

You ping 192.168.10.15 from Computer1 and discover that the request timed out. You need to ensure that you can successfully ping 192.168.10.15 from Computer1. Solution: On Computer1, you turn off Windows Defender Firewall-Does this meet the goal?

- A. Yes
- B. No

Answer: B

NEW QUESTION 200

- (Exam Topic 4)

Your network contains an Active Directory domain. The domain contains a computer named Computer1 that runs Windows 10.

The domain contains the users shown in the following table.

Name	Member of
User1	Domain Users
User2	Domain Users, Guests
User3	Domain Users, Administrators

Computer1 has the local users shown in the following table.

Name	Member of
User4	Users
User5	Administrators

All users have Microsoft accounts.

Which two users can be configured to sign in by using their Microsoft account? Each correct answer presents part of the solution.

NOTE: Each correct selection is worth one point.

- A. User 1
- B. User 2
- C. User 3
- D. User 4
- E. User 5

Answer: CE

NEW QUESTION 203

- (Exam Topic 4)

Note: This question is part of a series of questions that present the same scenario. Each question in the series contains a unique solution that might meet the stated goals. Some question sets might have more than one correct solution, while others might not have a correct solution.

After you answer a question in this section, you will NOT be able to return to it. As a result, these questions will not appear in the review screen.

You have two computers named Computer1 and Computer2 that run Windows 10.

You have an Azure Active Directory (Azure AD) user account named admin@contoso.com that is in the local Administrators group on each computer.

You sign in to Computer1 by using admin@contoso.com.

You need to ensure that you can use Event Viewer on Computer1 to connect to the event logs on Computer2. Solution: On Computer2, you enable the Remote Event Log Management inbound rule from Windows Defender Firewall.

Does this meet the goal?

- A. Yes
- B. No

Answer: A

Explanation:

Reference:

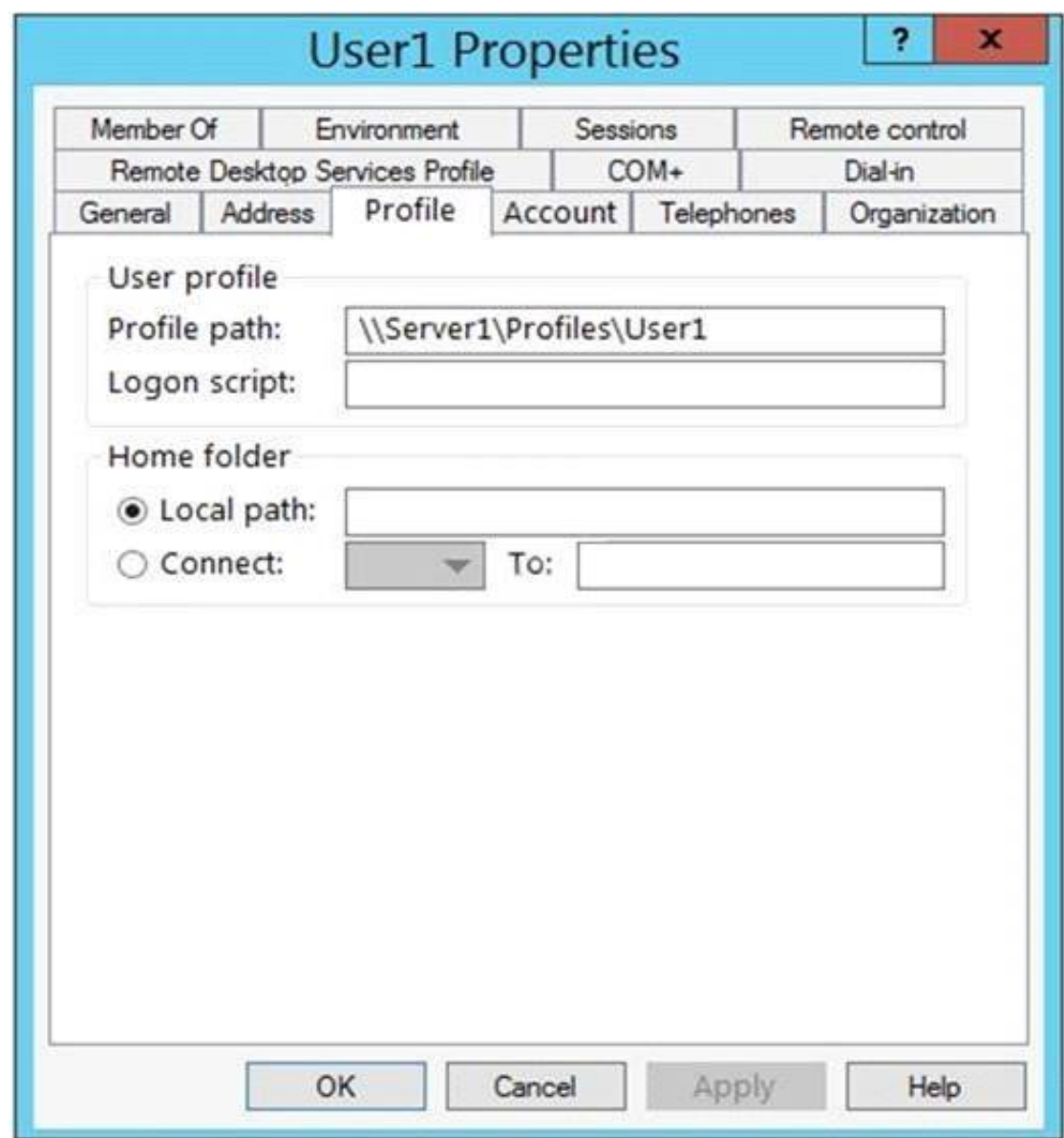
<https://docs.microsoft.com/en-us/previous-versions/windows/it-pro/windows-server-2008-R2-and-2008/cc76643>

NEW QUESTION 208

- (Exam Topic 4)

Your network contains an on-premises Active Directory forest named contoso.com. The forest contains a user named User1 and two computers named Computer1 and Computer2 that run Windows 10.

User1 is configured as shown in the following exhibit.



You rename file \\Server1\\Profiles\\User1.V6\\NTUSER.DAT as NTUSER.MAN.
For each of the following statements, select Yes if the statement is true. Otherwise, select No. NOTE: Each correct selection is worth one point.

Statements	Yes	No
On Computer1, if User1 adds a shortcut to the desktop, the shortcut will appear when the user signs in to Computer2.	<input type="radio"/>	<input type="radio"/>
On Computer1, if User1 modifies the background, and then signs out, the user will see the modified background when signing back in to Computer1.	<input type="radio"/>	<input type="radio"/>
On Computer1, if User1 modifies the background, and then signs out, the user will see the modified background when signing in to Computer2.	<input type="radio"/>	<input type="radio"/>

- A. Mastered
- B. Not Mastered

Answer: A

Explanation:

Statements	Yes	No
On Computer1, if User1 adds a shortcut to the desktop, the shortcut will appear when the user signs in to Computer2.	<input type="radio"/>	<input checked="" type="radio"/>
On Computer1, if User1 modifies the background, and then signs out, the user will see the modified background when signing back in to Computer1.	<input checked="" type="radio"/>	<input type="radio"/>
On Computer1, if User1 modifies the background, and then signs out, the user will see the modified background when signing in to Computer2.	<input type="radio"/>	<input checked="" type="radio"/>

NEW QUESTION 212

- (Exam Topic 4)

You have a computer named Computer1 that runs Windows 10. On Computer1, you turn on File History. You need to protect a folder named D:\\Folder1 by using File History. What should you do?

- A. From File Explorer, modify the General settings of D:\\Folder1
- B. From File Settings app, configure the Backup settings

- C. From the Settings app, configure the Recovery settings
D. From File History in Control Panel, configure the Select drive settings

Answer: B

Explanation:

To configure File History, click More options on the Backup screen. The Backup options screen allows you to set how often File History backs up your files and how long versions are saved.

References:

<https://www.groovypost.com/howto/configure-windows-10-file-history/>

NEW QUESTION 217

- (Exam Topic 4)

Your network contains an Active Directory domain. The domain contains a group named Group1.

All the computers in the domain run Windows 10. Each computer contains a folder named C:\Documents that has the default NTFS permissions set.

You add a folder named C:\Documents\Templates to each computer.

_ You need to configure the NTFS permissions to meet the following requirements: All domain users must be able to open the files in the Templates folder.

_ Only the members of Group1 must be allowed to edit the files in the Templates folder.

How should you configure the NTFS settings on the Templates folder? To answer, select the appropriate options in the answer area.

NOTE: Each correct selection is worth one point.

Inheritance: ▼

Enable inheritance.
Disable inheritance and remove permissions.
Disable inheritance and copy explicit permissions.

Permissions for domain users: ▼

Allow Read&Execute
Deny Read&Execute
Allow Modify
Deny Modify

Permissions for Group1: ▼

Allow Read&Execute
Deny Read&Execute
Allow Modify
Deny Modify

- A. Mastered
B. Not Mastered

Answer: A

Explanation:

Inheritance: ▼

Enable inheritance.
Disable inheritance and remove permissions.
Disable inheritance and copy explicit permissions.

Permissions for domain users: ▼

Allow Read&Execute
Deny Read&Execute
Allow Modify
Deny Modify

Permissions for Group1: ▼

Allow Read&Execute
Deny Read&Execute
Allow Modify
Deny Modify

NEW QUESTION 221

- (Exam Topic 4)

Your company has a wireless access point that uses WPA2-Enterprise. You need to configure a computer to connect to the wireless access point. What should you do first?

- A. Create a provisioning package in Windows Configuration Designer.
- B. Request a passphrase.
- C. Request and install a certificate.
- D. Create a Connection Manager Administration Kit (CMAK) package.

Answer: B

Explanation:

References:

<https://support.microsoft.com/en-za/help/17137/windows-setting-up-wireless-network>

NEW QUESTION 222

- (Exam Topic 4)

You plan to deploy Windows 10 to 100 secure computers.

You need to select a version of Windows 10 that meets the following requirements:

- > Uses Microsoft Edge as the default browser
- > Minimizes the attack surface on the computer
- > Supports joining Microsoft Azure Active Directory (Azure AD)
- > Only allows the installation of applications from the Microsoft Store

What is the best version to achieve the goal? More than one answer choice may achieve the goal. Select the BEST answer.

- A. Windows 10 Pro in S mode
- B. Windows 10 Home in S mode
- C. Windows 10 Pro
- D. Windows 10 Enterprise

Answer: A

Explanation:

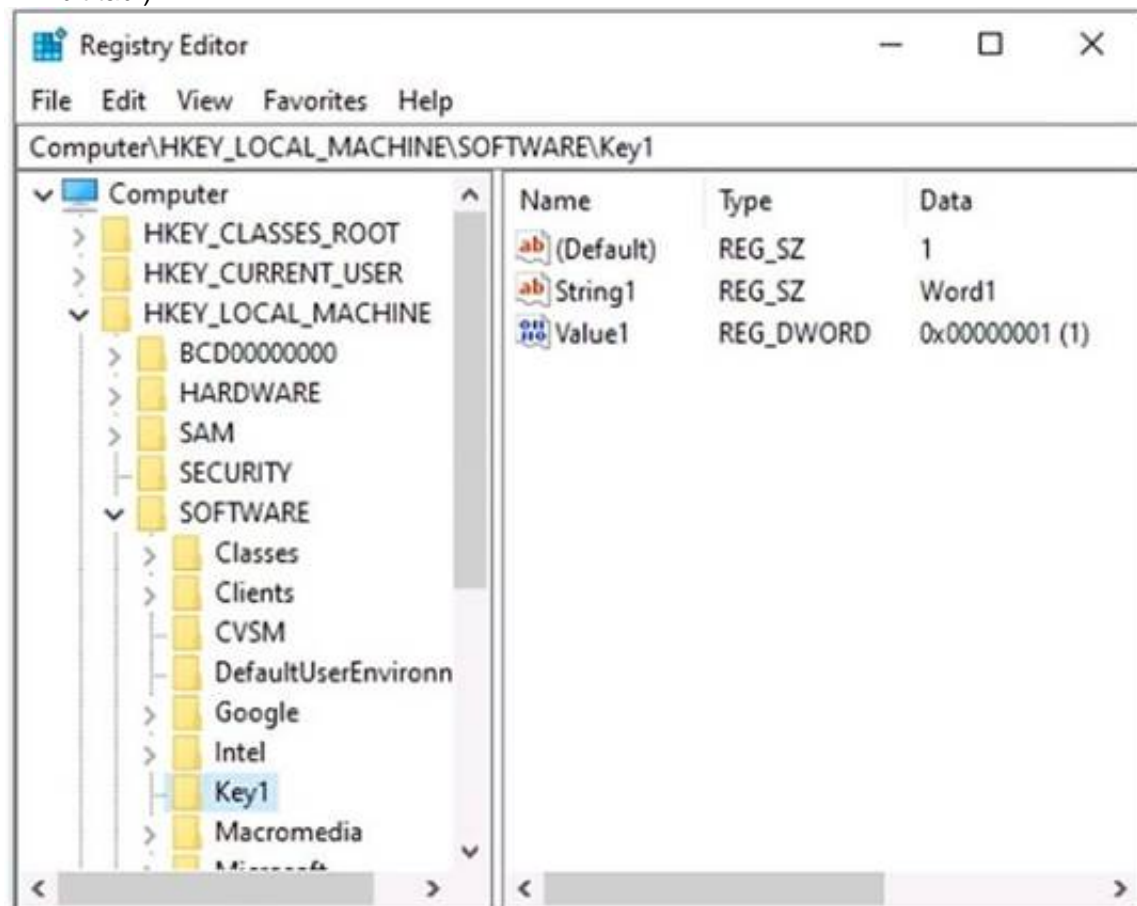
References:

Uses Microsoft Edge as the default browser Minimizes the attack surface on the computer Supports joining Microsoft Azure Active Directory (Azure AD) Only allows the installation of applications from the Microsoft Store <https://docs.microsoft.com/es-es/windows/deployment/s-mode>

NEW QUESTION 223

- (Exam Topic 4)

You have a computer named Computer1 that runs Windows 10. Computer1 contains a registry key named Key1 that has the values shown in the exhibit. (Click the Exhibit tab.).



You have a Registration Entries (.reg) file named File1.reg that contains the following text.

Windows Registry Editor Version 5.00 [HKEY_LOCAL_MACHINE\SOFTWARE\Key1]

"String1"=

@="2"

You need to identify the effect of importing File1.reg to Computer1.

What should you identify? To answer, select the appropriate options in the answer area.

NOTE: Each correct selection is worth one point.

String1 will:

	▼
be deleted	
have a value of –	
have a value of Word1	
have no value	

Value1 will:

	▼
be deleted	
have a value of 1	
have a value of 2	
have no value	

- A. Mastered
- B. Not Mastered

Answer: A

Explanation:

Box 1: String1 will be deleted.

To delete a value, append equals and then minus to the value. For example: "String1"=Box 2: Value1 will have a value of 1
 @="2" sets the default value to 1 but Value1 already has a DWORD value.

A DWORD (32-bit) value is a hexadecimal value. Value1 is 0x00000001 which is 1. References:

<https://www.computerhope.com/issues/ch000848.htm> <https://www.computerperformance.co.uk/vista/reg-create/>

NEW QUESTION 228

- (Exam Topic 4)

You have a computer that runs Windows 10. You need to configure a picture password.

What should you do? D18912E1457D5D1DDCBD40AB3BF70D5D

- A. From Control Panel, configure the User Accounts settings.
- B. From the Settings app, configure the Sign-in options.
- C. From the Local Group Policy Editor, configure the Account Policies settings.
- D. From Windows PowerShell, run the Set-LocalUser cmdlet and specify the InputObject parameter.

Answer: B

NEW QUESTION 231

- (Exam Topic 4)

Your network contains an Active Directory domain named contoso.com. The domain contains two computers named Computer1 and Computer2 that run Windows 10.

On Computer1, you need to run the Invoke-Command cmdlet to execute several PowerShell commands on Computer2.

What should you do first?

- A. On Computer2, run the Enable-PSRemoting cmdlet
- B. From Active Directory, configure the Trusted for Delegation setting for the computer account of Computer2
- C. On Computer1, run the New-PSSession cmdlet
- D. On Computer2, add Computer1 to the Remote Management Users group

Answer: A

Explanation:

Reference:

<https://docs.microsoft.com/en-us/powershell/module/microsoft.powershell.core/enable-psremoting?view=power>

NEW QUESTION 234

- (Exam Topic 4)

You have Windows 10 devices that use custom device drivers.

You need to test new builds of Windows before the builds are made available to the general public. The solution must ensure that the builds are installed as soon as possible.

Which Windows readiness level should you configure?

- A. Preview Build - Slow
- B. Semi-Annual Channel
- C. Release Preview
- D. Preview Build - Fast

Answer: D

NEW QUESTION 237

- (Exam Topic 4)

You have a workgroup computer that runs Windows 10.

You need to configure User Account Control (UAC) to meet the following requirements:

- Ensure that the local Administrator account is always be prompted to approve elevation of privilege.
- Enforce public key infrastructure (PKI) signature checks for any interactive apps that request elevation of privilege.

Which two policy settings should you modify? To answer, select the settings in the answer area. NOTE: Each correct selection is worth one point.

Answer Area

Policy	Security Setting
User Account Control: Virtualize file and registry write failures to per-user locations	Enabled
User Account Control: Switch to the secure desktop when prompting for elevation	Enabled
User Account Control: Run all administrators in Admin Approval Mode	Enabled
User Account Control: Only elevate UIAccess applications that are installed in secure locations	Enabled
User Account Control: Only elevate executables that are signed and validated	Disabled
User Account Control: Detect application installations and prompt for elevation	Enabled
User Account Control: Behavior of the elevation prompt for standard users	Prompt for credentials
User Account Control: Behavior of the elevation prompt for administrators in Admin Approval Mode	Prompt for consent for non-V
User Account Control: Allow UIAccess applications to prompt for elevation without using the secure desktop	Disabled
User Account Control: Admin Approval Mode for the Built-in Administrator account	Not Defined

A. Mastered

B. Not Mastered

Answer: A

Explanation:

Policy	Security Setting
User Account Control: Virtualize file and registry write failures to per-user locations	Enabled
User Account Control: Switch to the secure desktop when prompting for elevation	Enabled
User Account Control: Run all administrators in Admin Approval Mode	Enabled
User Account Control: Only elevate UIAccess applications that are installed in secure locations	Enabled
User Account Control: Only elevate executables that are signed and validated	Disabled
User Account Control: Detect application installations and prompt for elevation	Enabled
User Account Control: Behavior of the elevation prompt for standard users	Prompt for credentials
User Account Control: Behavior of the elevation prompt for administrators in Admin Approval Mode	Prompt for consent for non-V
User Account Control: Allow UIAccess applications to prompt for elevation without using the secure desktop	Disabled
User Account Control: Admin Approval Mode for the Built-in Administrator account	Not Defined

NEW QUESTION 242

- (Exam Topic 4)

You have a computer named Computer1 that runs Windows 11.

You need to ensure that you can use the ping command to validate network connectivity to Computer 1. How should you configure Windows Defender Firewall on Computer1?

- A. Enable the Core Networking - Teredo (UDP-In) inbound rule.
- B. Create a new connection security rule.
- C. Enable the File and Printer Sharing (Echo Request - ICMPv4-In) inbound rule.
- D. Add a new port rule to allow ports 80 and 443.

Answer: C

NEW QUESTION 245

- (Exam Topic 4)

Note: This question is part of a series of questions that present the same scenario. Each question in the series contains a unique solution that might meet the stated goals. Some question sets might have more than one correct solution, while others might not have a correct solution.

After you answer a question in this section, you will NOT be able to return to it. As a result, these questions will not appear in the review screen.

You have a computer named Computer1 that runs Windows 10.

You test Windows updates on Computer1 before you make the updates available to other computers. You install a quality update that conflicts with a customer device driver.

You need to remove the update from Computer1.

Solution: From an elevated command prompt, you run the vmic qfe delete command. Does this meet the goal?

- A. Yes
- B. No

Answer: B

NEW QUESTION 247

- (Exam Topic 4)

You have a workgroup computer named Computer1 that runs Windows 10. Computer1 has the user accounts shown in the following table.

Name	Member of
User1	Users
User2	Users, Event Log Readers
User3	Users, Backup Operators

In Event Viewer, you create two custom views named View1 and View2. View1 shows errors and warnings from the Security event log. View2 shows errors and warnings from the System event log. Which users can use the views? To answer, select the appropriate options in the answer area. NOTE Each correct selection is worth one point.

Answer Area

View1: ▼

User2 only
 User2 and User3 only
 User1, User2, and User3

View2: ▼

User2 only
 User2 and User3 only
 User1, User2, and User3

- A. Mastered
- B. Not Mastered

Answer: A

Explanation:

Answer Area

View1: ▼

User2 only
 User2 and User3 only
 User1, User2, and User3

View2: ▼

User2 only
 User2 and User3 only
 User1, User2, and User3

NEW QUESTION 251

- (Exam Topic 4)

Your network contains an Active Directory forest. The forest contains a root domain named contoso.com and a child domain named corp.contoso.com.

You have a computer named Computer1 that runs Windows 10. Computer1 is joined to the corp.contoso.com domain.

Computer1 contains a folder named Folder1. In the Security settings of Folder1, Everyone is assigned the Full control permissions.

On Computer1, you share Folder1 as Share1 and assign the Read permissions for Share1 to the Users group. For each of the following statements, select Yes if the statement is true. Otherwise, select No.

NOTE: Each correct selection is worth one point.

Statements	Yes	No
All the local users on Computer1 have Read access to \\Computer1\Share1.	<input type="radio"/>	<input type="radio"/>
All the users in the corp.contoso.com domain have Read access to \\Computer1\Share1.	<input type="radio"/>	<input type="radio"/>
All the users in the contoso.com domain have Read access to \\Computer1\Share1.	<input type="radio"/>	<input type="radio"/>

- A. Mastered

B. Not Mastered

Answer: A

Explanation:

References:

<https://www.techrepublic.com/article/learn-the-basic-differences-between-share-and-ntfs-permissions/>

NEW QUESTION 256

- (Exam Topic 4)

You have a workgroup computer named Computer1 that runs Windows 10 and has the users shown in the following table.

Name	Member of
User1	Administrators
User2	Power Users, Users
User3	Backup Operators, Users
User4	Users

You plan to add a key named Key1 to the following three registry branches:

- > HKEY_CURRENT_CONFIG\Software
- > HKEY_LOCAL_MACHINES\Software
- > HKEY_CURRENT_USER\Software

You need to identify which users can add Key1.

What user or users should you identify for each branch? To answer, select the appropriate options in the answer area.

NOTE: Each correct selection is worth one point.

HKEY_CURRENT_CONFIG\Software:

User1 only
 User1 and User2 only
 User1 and User3 only
 User1, User2, User3, and User4

HKEY_LOCAL_MACHINE\Software:

User1 only
 User1 and User2 only
 User1 and User3 only
 User1, User2, User3, and User4

HKEY_CURRENT_USER\Software:

User1 only
 User1 and User2 only
 User1 and User3 only
 User1, User2, User3, and User4

A. Mastered

B. Not Mastered

Answer: A

Explanation:

Box 1 and Box 2.

These are system-wide registry keys so only Administrators can modify them. Box 3.

This key affects only the logged in user. Therefore, any user can modify this key.

NEW QUESTION 261

- (Exam Topic 4)

You have an Azure Active Directory (Azure AD) tenant named contoso.com that contains a user named UserA.

You have two computers named Computer1 and Computer2 that run Windows 10 and are joined to contoso.com.

You need to ensure that UserA can connect to Computer2 from Computer1 by using Remote Desktop. Which three actions should you perform? Each correct answer presents part of the solution.

NOTE: Each correct selection is worth one point.

- A. On Computer1, modify the registry.
- B. On Computer2, modify the registry.
- C. On Computer1, modify the properties of UserA.
- D. On Computer1, enable Remote Desktop.
- E. On Computer2, modify the properties of UserA.
- F. On Computer 2, enable Remote Desktop.
- G. On Computer2, add the Everyone group to the Remote Desktop Users group.
- H. On Computer1, add the Everyone group to the Remote Desktop Users group.

Answer: EFG

Explanation:

Reference:

<https://docs.microsoft.com/en-us/windows/client-management/connect-to-remote-aadj-pc>

NEW QUESTION 264

- (Exam Topic 4)

You have a workgroup computer named Computer1 that runs Windows 10. Computer1 contains five local user accounts. You need to ensure that all users who sign in to Computer1 see a picture named Image1.jpg as the desktop background. What should you do?

- A. From the Settings app
- B. modify the Background settings.
- C. From the Local Group Policy Editor, modify the Desktop settings.
- D. Rename Image1.jpg as Desktop.jpg and copy the picture to the C:\Windows\system32\folder.
- E. Rename Image1.jpg as Desktop.jpg and copy the picture to the C:\Users\Default\Desktop\folder.

Answer: B

Explanation:

References:

<https://www.top-password.com/blog/set-a-default-background-wallpaper-for-windows-10-desktop/>

NEW QUESTION 265

- (Exam Topic 4)

Please wait while the virtual machine loads. Once loaded, you may proceed to the lab section. This may take a few minutes, and the wait time will not be deducted from your overall test time.

When the Next button is available, click it to access the lab section. In this section, you will perform a set of tasks in a live environment. While most functionality will be available to you as it would be in a live environment, some functionality (e.g., copy and paste, ability to navigate to external websites) will not be possible by design.

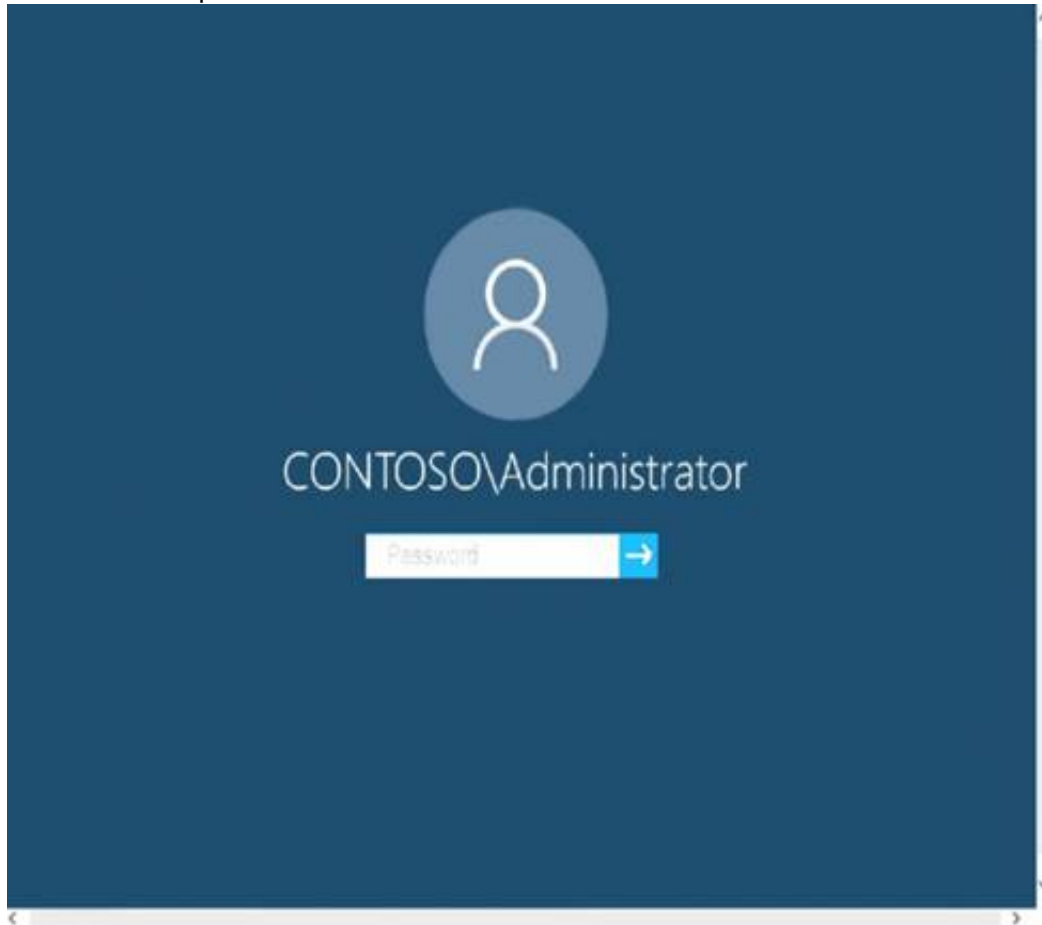
Scoring is based on the outcome of performing the tasks stated in the lab. In other words, it doesn't matter how you accomplish the task, if you successfully perform it, you will earn credit for that task.

Labs are not timed separately, and this exam may more than one lab that you must complete. You can use as much time as you would like to complete each lab.

But, you should manage your time appropriately to ensure that you are able to complete the lab(s) and all other sections of the exam in the time provided.

Please note that once you submit your work by clicking the Next button within a lab, you will NOT be able to return to the lab.

Username and password



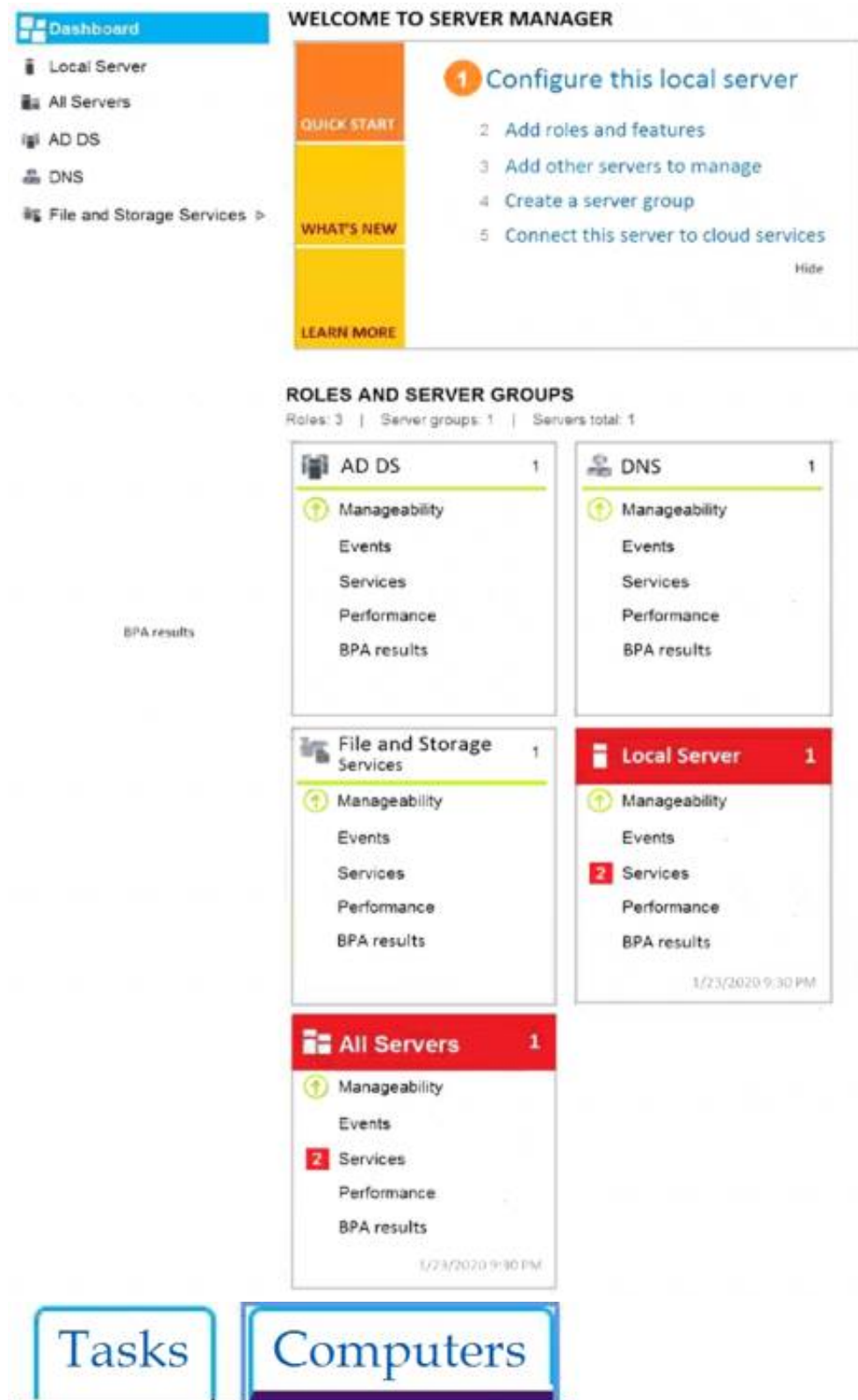
Use the following login credentials as needed:

To enter your password, place your cursor in the Enter password box and click on the password below.

Username: Contoso/Administrator

Password: Passw0rd!

The following information is for technical support purposes only: Lab Instance: 11145882



You need to ensure that the File History of Contoso\Administrator on Client1 is backed up automatically to \\DC1\Backups.
To complete this task, sign in to the required computer or computers.

- A. Mastered
- B. Not Mastered

Answer: A

Explanation:

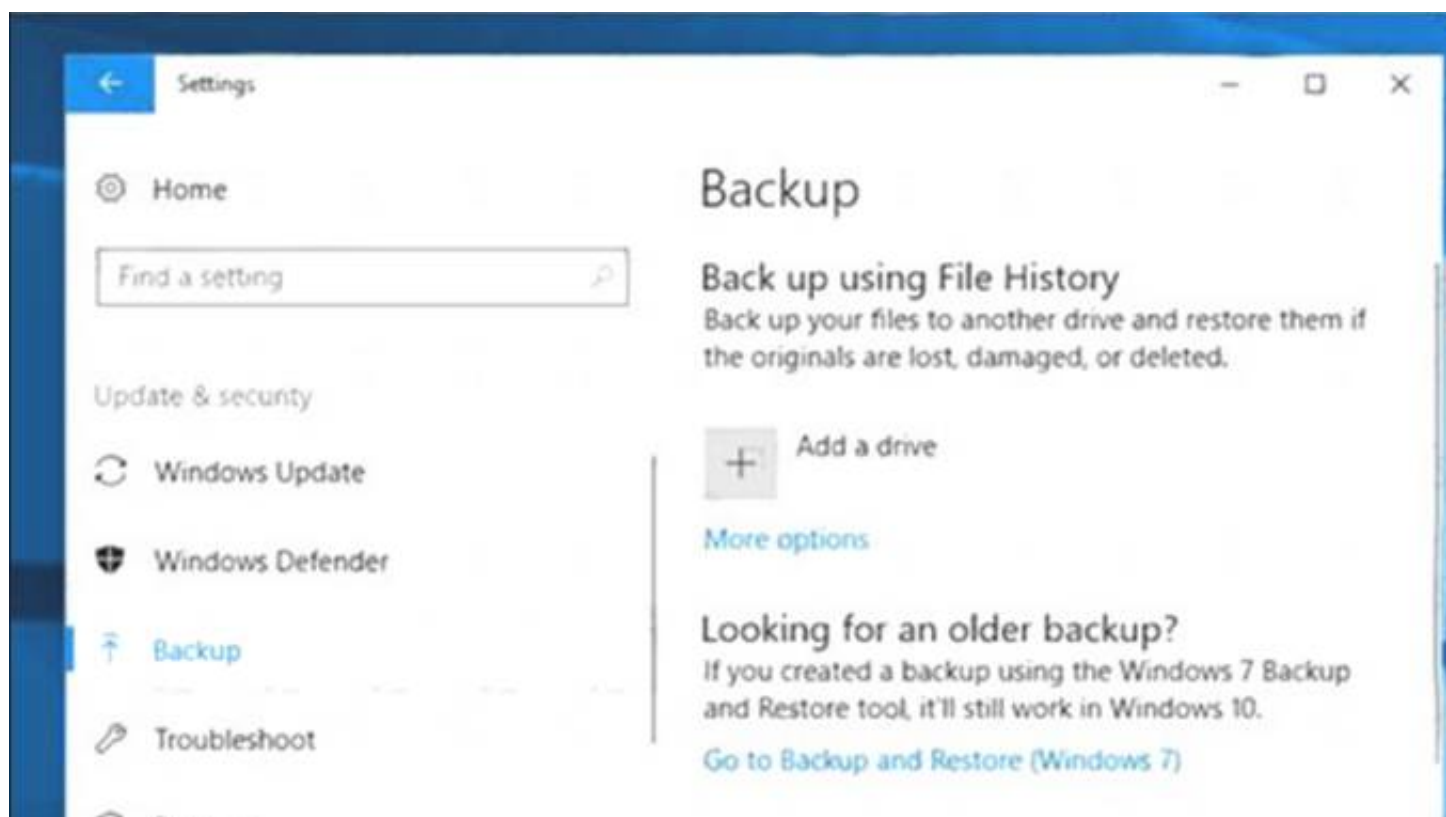
How to set up and enable File History

* 1. On Client1, go to Start > Settings > Update & Security.

* 2. Select Backup and click "Add a drive."

* 3. Select the drive or network location (\\DC1\Backups) you want to use for File History's backups.

Now click "More options." Here you can start a backup, change when your files are backed up, select how long to keep backed up files, add or exclude a folder, or switch File History to a different drive.



Click the “Back up now” button to start your first File History backup. Reference:
<https://lifehacker.com/how-to-back-up-your-computer-automatically-with-windows-1762867473>

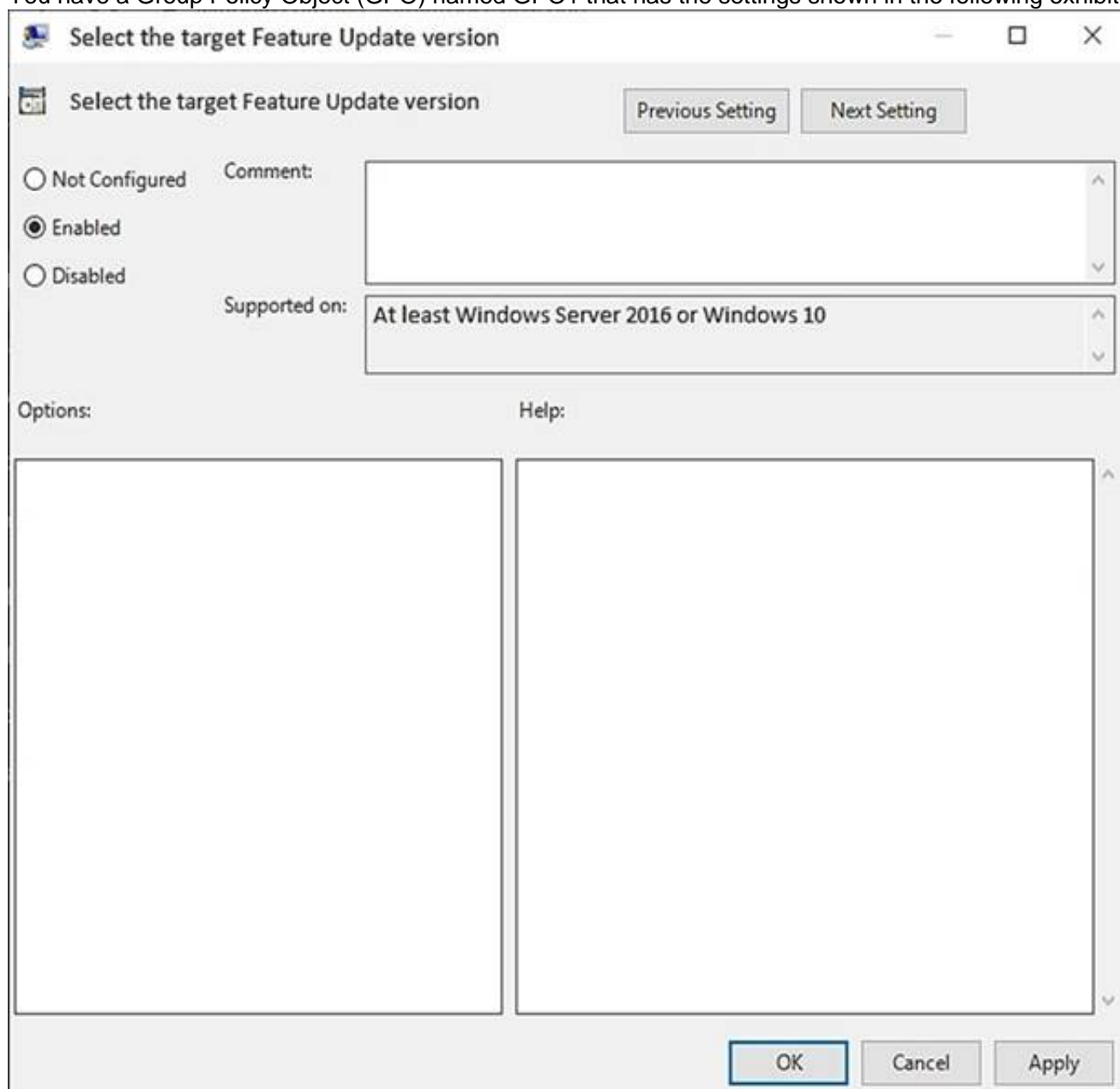
NEW QUESTION 268

- (Exam Topic 4)

Your network contains an Active Directory domain. The domain contains computers that run Windows 10. The computers are configured as shown in the following table.

Name	Version	Organizational unit (OU)
Computer1	1909	Devices/OU1
Computer2	1909	Devices/OU2
Computer3	20H2	Devices/OU2

You have a Group Policy Object (GPO) named GPO1 that has the settings shown in the following exhibit.



A domain administrator links GPO1 to OU2.

For each of the following statements, select Yes if the statement is true. Otherwise, select No.

NOTE: Each correct selection is worth one point.

Answer Area

Statements	Yes	No
Computer1 will install Windows 10, version 2004.	<input type="checkbox"/>	<input type="checkbox"/>
Computer2 will install Windows 10, version 2004.	<input type="checkbox"/>	<input type="checkbox"/>
Computer3 will install Windows 10, version 2004.	<input type="checkbox"/>	<input type="checkbox"/>

- A. Mastered
- B. Not Mastered

Answer: A

Explanation:

Text Description automatically generated

Reference:

https://support.microsoft.com/en-us/topic/feature-update-through-windows-10-version-20h2-enablement-packag

NEW QUESTION 272

- (Exam Topic 4)

You have a computer that is configured as shown in the following exhibit.

```
C:\Users\user-a>ipconfig /all

Windows IP Configuration

Host Name. . . . .: DESKTOP-8FF1SK7
Primary Dns Suffix. . . . .:
Node Type . . . . .: Hybrid
IP Routing Enabled. . . . .: No
WINS Proxy Enabled. . . . .: No

Ethernet adapter Ethernet:

Connection-specific DNS Suffix. . . . .:
Description. . . . .: Microsoft Hyper-V Network Adapter
Physical Address. . . . .: 00-15-5D-00-04-56
DHCP Enabled. . . . .: Yes
Autoconfiguration Enabled. . . . .: Yes
Link-local IPv6 Address. . . . .: fe80::5c1c:443f:c050:1e14%4(Preferred)
Autoconfiguration IPv4 Address. . . . .: 169.254.30.20(Preferred)
Subnet Mask. . . . .: 255.255.0.0
Default Gateway. . . . .:
DHCPv6 IAID. . . . .: 50337117
DHCPv6 Client DUID. . . . .: 00-01-00-01-23-62-12-AF-00-15-5D-00-04-56
DNS Servers. . . . .: fec0:0:0:ffff::1%1
                        fec0:0:0:ffff::2%1
                        fec0:0:0:ffff::3%1
NetBIOS over Tcpi. . . . .: Enabled
```

What can the computer connect to?

- A. all the local computers and the remote computers within your corporate network only
- B. all the local computers and the remote computers, including Internet hosts
- C. only other computers on the same network segment that have automatic private IP addressing (APIPA)
- D. only other computers on the same network segment that have an address from a class A network ID

Answer: B

NEW QUESTION 275

- (Exam Topic 4)

Please wait while the virtual machine loads. Once loaded, you may proceed to the lab section. This may take a few minutes, and the wait time will not be deducted from your overall test time.

When the Next button is available, click it to access the lab section. In this section, you will perform a set of tasks in a live environment. While most functionality will be available to you as it would be in a live environment, some functionality (e.g., copy and paste, ability to navigate to external websites) will not be possible by design.

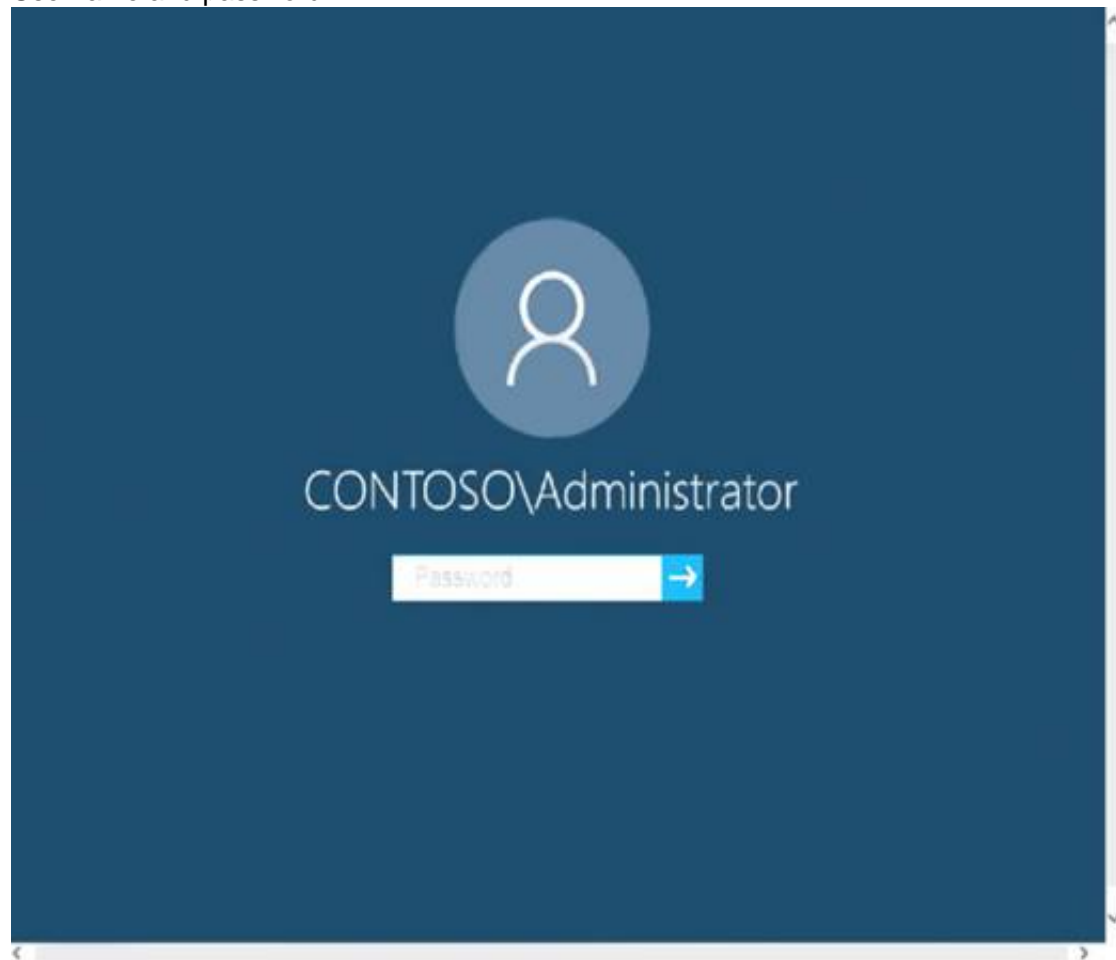
Scoring is based on the outcome of performing the tasks stated in the lab. In other words, it doesn't matter how you accomplish the task, if you successfully perform it, you will earn credit for that task.

Labs are not timed separately, and this exam may more than one lab that you must complete. You can use as much time as you would like to complete each lab.

But, you should manage your time appropriately to ensure that you are able to complete the lab(s) and all other sections of the exam in the time provided.

Please note that once you submit your work by clicking the Next button within a lab, you will NOT be able to return to the lab.

Username and password



Use the following login credentials as needed:

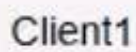
To enter your password, place your cursor in the Enter password box and click on the password below.

Username: Contoso/Administrator

Password: Passw0rd!

The following information is for technical support purposes only: Lab Instance: 11145882

BPA results



Client2

Client3

DC1

A. Mastered
B. Not Mastered

Explanation:

- From the boxes under Choose when updates are installed, select the number of days you would like to defer a feature update or a quality update. Reference:
<https://support.microsoft.com/en-us/help/4026834/windows-10-defer-feature-updates>

NEW QUESTION 276

- (Exam Topic 4)

You have a computer named Computer1 that runs Windows 11. You plan to change a registry setting on Computer1.

You need to ensure that you can revert to the previous registry setting if the change causes an issue on Computer1. The solution must minimize administrative effort.

Which two actions should you perform? Each correct answer presents part of the solution. NOTE: Each correct selection is worth one point.

- A. Enable system protection.
- B. Enable controlled folder access.
- C. Create a restore point.
- D. Create a recovery drive.
- E. Configure a dynamic lock policy.

Answer: AC

NEW QUESTION 280

- (Exam Topic 4)

You have a computer named Computer1 that runs Windows 10. Computer1 belongs to a workgroup. You run the following commands on Computer1.

New-LocalUser -Name User1 -NoPassword Add-LocalGroupMember User -Member User1 What is the effect of the configurations?

- A. User1 is prevented from signing in until the user is assigned additional user rights.
- B. User1 appears on the sign-in screen and can sign in without a password.
- C. User1 is prevented from signing in until an administrator manually sets a password for the user.
- D. User1 appears on the sign-in screen and must set a new password on the first sign-in attempts.

Answer: D

Explanation:

References:

<https://docs.microsoft.com/en-us/powershell/module/microsoft.powershell.localaccounts/new-localuser?view=powershell-5.1>

NEW QUESTION 281

- (Exam Topic 4)

Your network contains an Active Directory domain that is synced to a Microsoft Azure Active Directory (Azure AD) tenant. All users have been issued with laptop computers as well as desktop computers that run Windows 10 Enterprise. All users have Microsoft 365 E3 licenses.

A user named Mia Hamm informs you that she must perform a BitLocker recovery on her laptop but she does not have her BitLocker recovery key.

You need to ensure that Mia Hamm can perform a BitLocker recovery on her laptop. What should you do?

- A. Instruct Mia Hamm to log on to her desktop computer and run the repair-bde.exe command.
- B. Instruct Mia Hamm to use the BitLocker Recovery Password Viewer to view the computer object of the laptop.
- C. Instruct Mia Hamm to log on to her desktop computer and go to <https://account.activedirectory.windowsazure.com> and view the user account profile.
- D. Instruct Mia Hamm to run the Enable-BitLocker cmdlet on her laptop.

Answer: C

Explanation:

The BitLocker recovery key is stored in Azure Active Directory. Reference:

<https://cedonpartners.com/blog/storing-recovering-bitlocker-keys-azure-active-directory/>

NEW QUESTION 283

- (Exam Topic 4)

Your network contains an Active Directory domain. the domain contains a computer named Computer1 that runs Windows 10. The domain contains the users shown in the following table.

Name	Member of
User1	Group1
User2	Group1, Group2

Computer contains the shared folders shown in the following table.

Name	Path	Access-based enumeration
Share1\$	D:\Folder1	Disabled
Share2	D:\Folder2	Enabled

The shared folders have the permissions shown in the following table.

Name	Security permission	Sharing permission
Share1\$	Group1: Read Group2: Full control	Everyone: Read Group2: Full control
Share2	Group2: Full control	Everyone: Read Group2: Full control

For each of the following statements, select Yes if the statement is true. Otherwise select No. NOTE: Each correct selection is worth one point.

Answer Area

Statements	Yes	No
When User1 connects to \\Computer1, Share1\$ is visible.	<input type="radio"/>	<input type="radio"/>
When User2 connects to \\Computer1\Share1\$, the contents of D:\Folder1 are accessible.	<input type="radio"/>	<input type="radio"/>
When User1 connects to \\Computer1\Share2, the contents of D:\Folder2 are accessible.	<input type="radio"/>	<input type="radio"/>

- A. Mastered
- B. Not Mastered

Answer: A

Explanation:

Box 1: No
Share1\$ is a hidden share (dollar sign appended) so the share will never be visible. Box 2: Yes
User2 is in Group1 and Group2. Both groups have access to Share1\$. Therefore, the contents of the shared folder will be visible.
Box 3: No
User1 is in Group1. Group1 does not have the necessary security permission to access Share2. You need both security permissions (NTFS permissions) AND share permissions to view the contents of a shared folder. User1 has the necessary share permissions (Everyone: Read), but not the security permission.

NEW QUESTION 288

- (Exam Topic 4)
You have a computer named Computer1 that runs Windows 10. Computer1 has a folder named C:\Folder1.
You need to meet the following requirements:
> Provide a user named Jon Ross with the ability to modify the permissions of C:\Folder1.
> Ensure that the principle of least privilege is maintained.
What should you do?
To complete this task, sign in to the required computer or computers.

- A. Mastered
- B. Not Mastered

Answer: A

Explanation:

> In Windows Explorer, right-click the C:\Folder1 folder, and then click Properties.
> Click on the Security tab, and then click Edit.
> In the Permissions dialog box, add Jon Ross.
> Specify the Allow Modify permissions for the Jon Ross.
> Click OK twice to close the Security dialog box.
> Click OK twice to close the Properties dialog box.
Reference:
<https://docs.microsoft.com/en-us/iis/web-hosting/configuring-servers-in-the-windows-web-platform/configuring>

NEW QUESTION 289

- (Exam Topic 4)
You need to configure Device1 to meet the following requirements:
• Deny User1 the right to sign in locally.
• Ensure that a logon script runs only when User2 signs in to Device1.
• Ensure that no login scripts run when User1 or Admin1 sign in to Device1.
Which two policies should you modify? Each correct answer presents part of the solution. NOTE: Each correct selection is worth one point.

- A. Local Computer\Admin1 Policy
- B. Local Computer\NAdministrators Policy
- C. Local Computer\Non-Administrators Policy IS
- D. Local Computer\User1 Policy
- E. Local Computer\User2 Policy
- F. Local Computer Policy

Answer: DE

NEW QUESTION 294

- (Exam Topic 4)
You have a computer named Computer1 that runs Windows 10. Computer1 is in a workgroup. Computer1 contains the local users shown in the following table.

Name	Member of
Administrator	Administrators, Users
User1	Backup Operators, Users
User2	Device Owners, Users
User3	Users

The Users group has Modify permissions to a folder named D:\Folder1. User3 creates a file named File1.docx in Folder1. Which users can take ownership of File1.docx?

- A. Administrator and User1 only
- B. Administrator only
- C. Administrator, User1, and User2
- D. Administrator and User2 only

Answer: B

Explanation:

Only a member of the Administrator's group can take ownership of a file or folder.

NEW QUESTION 299

- (Exam Topic 4)

You have a computer named Computer1 that runs Windows 10. Computer1 is in a workgroup. Computer1 contains the folders shown in the following table.

Name	Volume	File system	Permission
Folder1	C	NTFS	Full control to Everyone
Folder2	C	NTFS	Full control to Everyone
Folder3	D	NTFS	Full control to Everyone

On Computer1, you create the users shown in the following table.

Name	Member of
User1	Users
User2	Backup Operators, Users
User3	Cryptographic Operators, Users
User4	Administrators, Users

User1 encrypts a file named File1.txt that is in a folder named C:\Folder1.

What is the effect of the configuration? To answer, select the appropriate options in the answer area. NOTE: Each correct selection is worth one point.

Users who can move File1.txt to C:\Folder2:

▼

☐ User1 only
 ☐ User1 and User2 only
 ☐ User1, User2, and User3 only
 ☐ User1, User2, User3, and User4

Users who can move File1.txt to D:\Folder3:

▼

☐ User1 only
 ☐ User1 and User2 only
 ☐ User1, User2, and User3 only
 ☐ User1, User2, User3, and User4

- A. Mastered
- B. Not Mastered

Answer: A

Explanation:

References:

<https://support.microsoft.com/en-za/help/310316/how-permissions-are-handled-when-you-copy-and-move-files>

NEW QUESTION 303

- (Exam Topic 4)

You have computers that run Windows 10 Enterprise as shown in the following table.

Name	Servicing channel
Computer1	Semi-Annual Channel (SAC)
Computer2	Long-Term Servicing Channel (LTSC) 2016

Both computers have applications installed and contain user data.

You plan to configure both computers to run Windows 10 Enterprise LTSC 2019 and to retain all the existing applications and data.

You need to recommend a method to deploy Windows 10 Enterprise LTSC 2019 to the computers. The solution must minimize effort to install and configure the applications.

What should you include in the recommendation for each computer? To answer, select the appropriate options in the answer area.

NOTE: Each correct selection is worth one point.

Computer1:	
	Perform a clean installation.
	Perform an in-place upgrade.
	Update the product key.

Computer2:	
	Perform a clean installation.
	Perform an in-place upgrade.
	Update the product key.

- A. Mastered
- B. Not Mastered

Answer: A

Explanation:

Graphical user interface, text, application, chat or text message Description automatically generated

References:

<https://docs.microsoft.com/en-us/windows/deployment/upgrade/windows-10-upgrade-paths>

NEW QUESTION 304

- (Exam Topic 4)

Note: This question is part of a series of questions that present the same scenario. Each question in the series contains a unique solution that might meet the stated goals. Some question sets might have more than one correct solution, while others might not have a correct solution.

After you answer a question in this section, you will NOT be able to return to it. As a result, these questions will not appear in the review screen.

You manage devices that run Windows 10.

Ten sales users will travel to a location that has limited bandwidth that is expensive. The sales users will be at the location for three weeks.

You need to prevent all Windows updates from downloading for the duration of the trip. The solution must not prevent access to email and the Internet.

Solution: From Network & Internet in the Settings app, you set a data limit. Does this meet the goal?

- A. Yes
- B. No

Answer: B

NEW QUESTION 306

- (Exam Topic 4)

Your network contains an Active Directory domain. The domain contains 100 computers that run Windows 10.

You need to create a Start menu layout file. The solution must meet the following requirements:

- Contain an app group named Contoso Apps that has several pinned items. Contoso Apps must be locked from user modification.
- Ensure that users can customize other parts of the Start screen.
- Minimize administrative effort.

Which four actions should you perform in sequence? To answer, move the appropriate commands from the list of commands to the answer area and arrange them in the correct order.

Actions	Answer Area
Deploy the start layout.	
Modify the StartLayoutCollection XML element.	
Modify the DefaultLayoutOverride XML element.	
Export the start layout to a file.	
On a reference computer, customize the Start menu.	

- A. Mastered
- B. Not Mastered

Answer: A

Explanation:

- * 1. On a reference computer, customize the Start menu
 - * 2. Export the start layout to a file
 - * 3. Modify the Defaultlayoutoverride XML element
 - * 4. Deploy the start layout References:
- <https://docs.microsoft.com/en-us/windows/configuration/customize-and-export-start-layout>

NEW QUESTION 308

- (Exam Topic 4)

You have a computer named Computer1 that runs Windows 10.

You need to modify the Security Settings of Computer1 to meet the following requirements:

- > A local group named Branch_Admns must be able to view and clear the Security log.
- > Local users must be prompted to change their password three days before the password expires.

Which two nodes of the Local Group Policy Editor should you access to configure the settings? To answer, select the appropriate nodes in the answer area.

NOTE: Each correct selection is worth one point.



- A. Mastered
- B. Not Mastered

Answer: A

Explanation:

Graphical user interface, text, application, chat or text message Description automatically generated

User Rights Assignment > Manage auditing and security log.

Security Options > Interactive Logon: Prompt user to change password before expiration: 3 days.

NEW QUESTION 311

- (Exam Topic 4)

You have a computer named Computer1 that runs Windows 10 and contains the following files:

- > C:\Folder1\File1.bat
- > C:\Folder1\File1.exe
- > C:\Folder1\File1.cmd

A user named User1 is assigned Read & execute to all the files. Computer1 is configured as shown in the exhibit.

```
Windows PowerShell

PS Env:\> dir

Name                           Value
----
ALLUSERSPROFILE                C:\ProgramData
APPDATA                        C:\Users\User1\AppData\Roaming
CommonProgramFiles             C:\Program Files\Common Files
CommonProgramFiles(x86)       C:\Program Files (x86)\Common Files
CommonProgramW6432            C:\Program Files\Common Files
COMPUTERNAME                   LON-CL1
ComSpec                        C:\WINDOWS\system32\cmd.exe
HOMEDRIVE                      C:
HOMEPATH                      \Users\User1
LOCALAPPDATA                   C:\Users\User1\AppData\Local
LOGONSERVER                    \\LON-CL1
NUMBER_OF_PROCESSORS           1
OneDrive                       C:\Users\xah\OneDrive
OS                             Windows_NT
Path                           C:\windows\system32;C:\windows;C:\Windows\System32\wbem;C:\Wind...
PATHEXT                        .COM;.EXE;.BAT;.CMD;.VBS;.VBE;.JS;.JSE;.WSF;.WSH;.MSC;.CPL
PROCESSOR_ARCHITECTURE         AMD64
PROCESSOR_IDENTIFIER           Intel64 Family 6 Model 94 Stepping 3, GenuineIntel
PROCESSOR_LEVEL                6
PROCESSOR_REVISION             5e03
ProgramData                   C:\ProgramData
ProgramFiles                   C:\Program Files
ProgramFiles(x86)              C:\Program Files (x86)
ProgramW6432                   C:\Program Files
PSModulePath                   C:\Users\User1\Documents\WindowsPowerShell\Modules;C:\Program Files\WindowsPowerShell\M...
PUBLIC                         C:\Users\Public
SESSIONNAME                    Console
SystemDrive                    C:
SystemRoot                     C:\WINDOWS
TEMP                           C:\Users\xah\AppData\Local\Temp
TMP                             C:\Users\xah\AppData\Local\Temp
USERDOMAIN                     LON-CL1
USERDOMAIN_ROAMINGPROFILE      LON-CL1
USERNAME                       User1
USERPROFILE                    C:\Users\User1
windir                         C:\WINDOWS

PS Env:\> _
```

Use the drop-down menus to select the answer choice that completes each statement based on the information presented in the graphic.
 NOTE: Each correct selection is worth one point.

When User1 open the command prompt, the prompt will open in the [answer choice] folder.

▼

C:\Windows

C:\Users\User1

C:\Users\User1\AppData\Local

C:\ProgramData

If User1 runs C:\Folder1\File1 at the command prompt, [answer choice].

▼

an error will occur

File1.bat will run

File1.cmd will run

File1.exe will run

- A. Mastered
- B. Not Mastered

Answer: A

Explanation:

References:

<https://stackoverflow.com/questions/148968/windows-batch-files-bat-vs-cmd>

NEW QUESTION 313

- (Exam Topic 4)

Note: This question is part of a series of questions that present the same scenario. Each question in the series contains a unique solution that might meet the stated goals. Some question sets might have more than one correct solution, while others might not have a correct solution.

After you answer a question in this section, you will NOT be able to return to it. As a result, these questions will not appear in the review screen.

You have a workgroup computer that runs Windows 10. The computer contains the local user accounts shown in the following table.

Name	Member of
Administrator	Administrators
User1	Administrators
User2	Users
User3	Users

You need to configure the desktop background for User1 and User2 only.

Solution: From the local computer policy, you configure the Filter Options settings for the user policy. At a command prompt, you run the gpupdate.exe/Target:user command.

Does this meet the goal?

- A. Yes
- B. No

Answer: B

NEW QUESTION 314

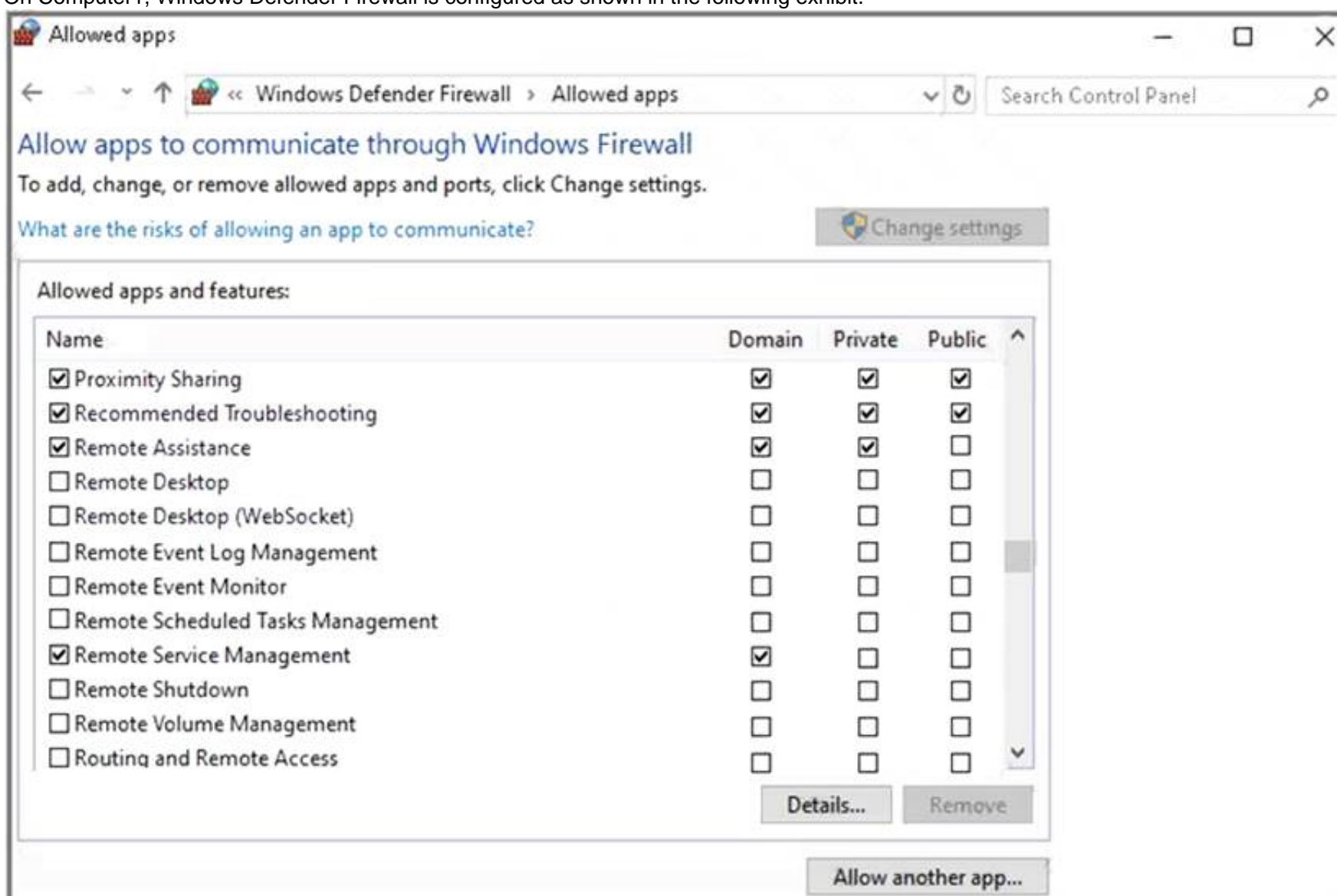
- (Exam Topic 4)

Your network contains an Active Directory domain named adatum.com, a workgroup, and computers that run Windows 10. The computers are configured as shown in the following table.

Name	Member of	Active Windows Defender Firewall profile
Computer1	Adatum.com	Domain
Computer2	Adatum.com	Domain
Computer3	Workgroup	Public

The local Administrator accounts on Computer1, Computer2, and Computer3 have the same user name and password.

On Computer1, Windows Defender Firewall is configured as shown in the following exhibit.



The services on Computer1 have the following states.

Status	Name	DisplayName
Stopped	RasAuto	Remote Access Auto Connection Manager
Running	RasMan	Remote Access Connection Manager
Stopped	RemoteAccess	Routing and Remote Access
Stopped	RemoteRegistry	Remote Registry
Stopped	RetailDemo	Retail Demo Service
Running	RmSvc	Radio Management Service
Running	RpcEptMapper	RPC Endpoint Mapper
Stopped	RpcLocator	Remote Procedure Call (RPC) Locator
Running	RpcSs	Remote Procedure Call (RPC)

For each of the following statements, select Yes if the statement is true. Otherwise, select No.

NOTE: Each correct selection is worth one point.

Statements	Yes	No
From Computer2, you can use Disk Management to manage Computer1 remotely.	<input type="radio"/>	<input type="radio"/>
From Computer2, you can use Registry Editor to edit the registry of Computer1 remotely.	<input type="radio"/>	<input type="radio"/>
From Computer3, you can use Performance Monitor to monitor the performance of Computer1.	<input type="radio"/>	<input type="radio"/>

- A. Mastered
- B. Not Mastered

Answer: A

Explanation:

Box 1: No

Because the firewall is blocking Remote Volume Management.

Box 2: No

Because the Remote Registry Service is stopped. Box 3: No

Because the Remote Registry Service is stopped. Perfmon needs both the RPC service and the Remote Registry service to be running.

NEW QUESTION 318

.....

THANKS FOR TRYING THE DEMO OF OUR PRODUCT

Visit Our Site to Purchase the Full Set of Actual MD-100 Exam Questions With Answers.

We Also Provide Practice Exam Software That Simulates Real Exam Environment And Has Many Self-Assessment Features. Order the MD-100 Product From:

<https://www.2passeasy.com/dumps/MD-100/>

Money Back Guarantee

MD-100 Practice Exam Features:

- * MD-100 Questions and Answers Updated Frequently
- * MD-100 Practice Questions Verified by Expert Senior Certified Staff
- * MD-100 Most Realistic Questions that Guarantee you a Pass on Your FirstTry
- * MD-100 Practice Test Questions in Multiple Choice Formats and Updatesfor 1 Year