



# Microsoft

## Exam Questions AI-900

Microsoft Azure AI Fundamentals (beta)

NEW QUESTION 1

DRAG DROP - (Topic 5)

You plan to deploy an Azure Machine Learning model by using the Machine Learning designer

Which four actions should you perform in sequence? To answer, move the appropriate actions from the list of actions to the answer area and arrange them in the correct order.

Actions

Evaluate the model against the original dataset.

Ingest and prepare a dataset.

Split the data randomly into training data and validation data.

Train the model.

Evaluate the model against the validation dataset.

>

<

Answer Area

1

2

3

4

>

<

- A. Mastered  
B. Not Mastered

Answer: A

Explanation:

Actions

Evaluate the model against the original dataset.

Ingest and prepare a dataset.

Split the data randomly into training data and validation data.

Train the model.

Evaluate the model against the validation dataset.

>

<

Answer Area

1 Ingest and prepare a dataset.

2 Split the data randomly into training data and validation data.

3 Train the model.

4 Evaluate the model against the validation dataset.

>

<

NEW QUESTION 2

- (Topic 5)

You plan to build a conversational AI solution that can be surfaced in Microsoft Teams. Microsoft Cortana, and Amazon Alexa. Which service should you use?

- A. Azure Bot Service  
B. Azure Cognitive Search  
C. Language service  
D. Speech

Answer: A

NEW QUESTION 3

- (Topic 5)

You need to reduce the load on telephone operators by implementing a chatbot to answer simple questions with predefined answers.

Which two AI service should you use to achieve the goal? Each correct answer presents part of the solution.

NOTE: Each correct selection is worth one point.

- A. Text Analytics  
B. QnA Maker  
C. Azure Bot Service  
D. Translator Text

Answer: BC

Explanation:

Bots are a popular way to provide support through multiple communication channels. You can use the QnA Maker service and Azure Bot Service to create a bot that answers user questions. Reference:  
<https://docs.microsoft.com/en-us/learn/modules/build-faq-chatbot-qna-maker-azure-bot-service/>

NEW QUESTION 4

HOTSPOT - (Topic 5)

Select the .

Answer Area

You can use the

Custom Vision

Computer Vision

Custom Vision

Form Recognizer

Azure Video Analyzer for Media

service to train an object detection model by using your own images.

- A. Mastered  
B. Not Mastered

Answer: A

Explanation:

**Answer Area**

You can use the 

Custom Vision

 service to train an object detection model by using your own images.

Computer Vision

Custom Vision

Form Recognizer

Azure Video Analyzer for Media

NEW QUESTION 5

HOTSPOT - (Topic 5)

Select the answer that correctly completes the sentence.

**Answer Area**

Counting the number of animals in an area based on a video feed is an example of 

computer vision.

forecasting.

computer vision.

knowledge mining.

anomaly detection.

- A. Mastered
- B. Not Mastered

Answer: A

Explanation:

**Answer Area**

Counting the number of animals in an area based on a video feed is an example of 

computer vision.

forecasting.

computer vision.

knowledge mining.

anomaly detection.

NEW QUESTION 6

DRAG DROP - (Topic 5)

Match the tool to the Azure Machine Learning task.

To answer, drag the appropriate tool from the column on the left to its tasks on the right. Each tool may be used once, more than once, or not at all

NOTE: Each correct match is worth one point.

Tools	Answer Area
Automated machine learning (automated ML)	<div>Tool</div> Create a Machine Learning workspace
The Azure portal	<div>Tool</div> Use a drag-and-drop interface used to train and deploy models
Machine Learning designer	<div>Tool</div> Use a wizard to select configurations for a machine learning run

- A. Mastered
- B. Not Mastered

Answer: A

Explanation:

Tools	Answer Area
Automated machine learning (automated ML)	<div>The Azure portal</div> Create a Machine Learning workspace
The Azure portal	<div>Machine Learning designer</div> Use a drag-and-drop interface used to train and deploy models
Machine Learning designer	<div>Automated machine learning (automated ML)</div> Use a wizard to select configurations for a machine learning run

NEW QUESTION 7

- (Topic 5)

You have a website that includes customer reviews.

You need to store the reviews in English and present the reviews to users in their respective language by recognizing each user's geographical location.

Which type of natural language processing workload should you use?

- A. translation
- B. language modeling
- C. key phrase extraction
- D. speech recognition

Answer: C

NEW QUESTION 8

HOTSPOT - (Topic 5)

For each of the following statements, select Yes if the statement is true. Otherwise, select No.

NOTE: Each correct selection is worth one point.

Statements	Yes	No
A restaurant can use a chatbot to empower customers to make reservations by using a website or an app.	<input type="radio"/>	<input type="radio"/>
A restaurant can use a chatbot to answer inquiries about business hours from a webpage.	<input type="radio"/>	<input type="radio"/>
A restaurant can use a chatbot to automate responses to customer reviews on an external website.	<input type="radio"/>	<input type="radio"/>

- A. Mastered
- B. Not Mastered

Answer: A

Explanation:

Statements	Yes	No
A restaurant can use a chatbot to empower customers to make reservations by using a website or an app.	<input checked="" type="radio"/>	<input type="radio"/>
A restaurant can use a chatbot to answer inquiries about business hours from a webpage.	<input checked="" type="radio"/>	<input type="radio"/>
A restaurant can use a chatbot to automate responses to customer reviews on an external website.	<input checked="" type="radio"/>	<input type="radio"/>

NEW QUESTION 9

HOTSPOT - (Topic 5)

For each of the following statements, select Yes if the statement is true. Otherwise, select No.

NOTE: Each correct selection is worth one point.

Statements	Yes	No
You train a regression model by using unlabeled data.	<input type="radio"/>	<input type="radio"/>
The classification technique is used to predict sequential numerical data over time.	<input type="radio"/>	<input type="radio"/>
Grouping items by their common characteristics is an example of clustering.	<input type="radio"/>	<input type="radio"/>

- A. Mastered
- B. Not Mastered

Answer: A

Explanation:

Statements	Yes	No
You train a regression model by using unlabeled data.	<input checked="" type="radio"/>	<input type="radio"/>
The classification technique is used to predict sequential numerical data over time.	<input type="radio"/>	<input checked="" type="radio"/>
Grouping items by their common characteristics is an example of clustering.	<input checked="" type="radio"/>	<input type="radio"/>

NEW QUESTION 10

- (Topic 5)

You need to create a customer support solution to help customers access information. The solution must support email, phone, and live chat channels. Which type of AI solution should you use?

- A. natural language processing (NLP)
- B. computer vision
- C. machine learning
- D. chatbot

Answer: D

NEW QUESTION 10



HOTSPOT - (Topic 5)  
Select the answer that correctly completes the sentence.

Answer Area

When building a regression model, labels must have a data type of

numeric.

boolean.

datetime.

numeric.

text.

- A. Mastered
- B. Not Mastered

Answer: A

Explanation:

Answer Area

When building a regression model, labels must have a data type of

numeric.

boolean.

datetime.

numeric.

text.

NEW QUESTION 15

HOTSPOT - (Topic 5)  
For each of the following statements, select Yes if the statement is true. Otherwise, select No.  
NOTE: Each correct selection is worth one point.

Statements	Yes	No
Providing an explanation of the outcome of a credit loan application is an example of the Microsoft transparency principle for responsible AI.	<input type="radio"/>	<input type="radio"/>
A triage bot that prioritizes insurance claims based on injuries is an example of the Microsoft reliability and safety principle for responsible AI.	<input type="radio"/>	<input type="radio"/>
An AI solution that is offered at different prices for different sales territories is an example of the Microsoft inclusiveness principle for responsible AI.	<input type="radio"/>	<input type="radio"/>

- A. Mastered
- B. Not Mastered

Answer: A

Explanation:

Statements	Yes	No
Providing an explanation of the outcome of a credit loan application is an example of the Microsoft transparency principle for responsible AI.	<input checked="" type="radio"/>	<input type="radio"/>
A triage bot that prioritizes insurance claims based on injuries is an example of the Microsoft reliability and safety principle for responsible AI.	<input type="radio"/>	<input checked="" type="radio"/>
An AI solution that is offered at different prices for different sales territories is an example of the Microsoft inclusiveness principle for responsible AI.	<input checked="" type="radio"/>	<input type="radio"/>

NEW QUESTION 17

HOTSPOT - (Topic 5)  
Select the answer that correctly completes the sentence.

Answer Area

When evaluating the performance of a model, the

confusion matrix

AUC metric

confusion matrix

ROC curve

threshold

displays the predicted and actual positives and negatives by using a grid of 0 and 1 values.

- A. Mastered
- B. Not Mastered

Answer: A

Explanation:

Answer Area

When evaluating the performance of a model, the 

confusion matrix

AUC metric

confusion matrix

ROC curve

threshold

 displays the predicted and actual positives and negatives by using a grid of 0 and 1 values.

NEW QUESTION 22

- (Topic 5)  
You need to develop a web-based AI solution for a customer support system. Users must be able to interact with a web app that will guide them to the best resource or answer.  
Which service should you use?

- A. Custom Vision
- B. QnA Maker
- C. Translator Text
- D. Face

Answer: B

Explanation:

QnA Maker is a cloud-based API service that lets you create a conversational question- and-answer layer over your existing data. Use it to build a knowledge base by extracting questions and answers from your semistructured content, including FAQs, manuals, and documents. Answer users' questions with the best answers from the QnAs in your knowledge base—automatically. Your knowledge base gets smarter, too, as it continually learns from user behavior.  
Reference:  
<https://azure.microsoft.com/en-us/services/cognitive-services/qna-maker/>

NEW QUESTION 27

- (Topic 5)  
For which two workloads can you use computer vision? Each correct answer presents a complete solution. NOTE: Each correct selection is worth one point.

- A. creating photorealistic images by using three-dimensional models
- B. assigning the color pixels in an image to object names
- C. describing the contents of an image
- D. detecting inconsistencies and anomalies in a stream of data
- E. creating visual representations of numerical data

Answer: BC

NEW QUESTION 30

HOTSPOT - (Topic 5)  
For each of the following statements, select Yes if the statement is true. Otherwise, select No.  
NOTE: Each correct selection is worth one point.

Statements	Yes	No
Chatbots can support voice input.	<input type="radio"/>	<input type="radio"/>
A separate chatbot is required for each communication channel.	<input type="radio"/>	<input type="radio"/>
Chatbots manage conversation flows by using a combination of natural language and constrained option responses.	<input type="radio"/>	<input type="radio"/>

- A. Mastered
- B. Not Mastered

Answer: A

Explanation:

Statements	Yes	No
Chatbots can support voice input.	<input type="radio"/>	<input checked="" type="radio"/>
A separate chatbot is required for each communication channel.	<input type="radio"/>	<input checked="" type="radio"/>
Chatbots manage conversation flows by using a combination of natural language and constrained option responses.	<input checked="" type="radio"/>	<input type="radio"/>

**NEW QUESTION 32**

- (Topic 5)

Which AI service should you use to create a bot from a frequently asked questions (FAQ) document?

- A. QnA Maker
- B. Language Understanding (LUIS)
- C. Text Analytics
- D. Speech

**Answer:** A

**NEW QUESTION 35**

- (Topic 5)

You need to predict the animal population of an area. Which Azure Machine Learning type should you use?

- A. clustering
- B. classification
- C. regression

**Answer:** C

**NEW QUESTION 38**

- (Topic 5)

During the process of Machine Learning, when should you review evaluation metrics?

- A. After you clean the data.
- B. Before you train a model.
- C. Before you choose the type of model.
- D. After you test a model on the validation data.

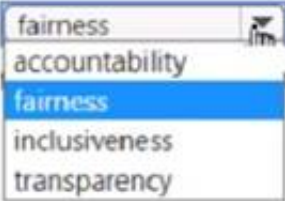
**Answer:** D

**NEW QUESTION 39**

HOTSPOT - (Topic 5)

Select the answer that correctly completes the sentence.

**Answer Area**

According to Microsoft's  principle of responsible AI,

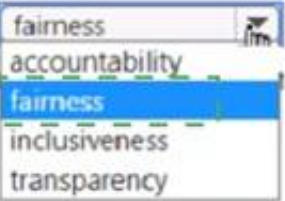
AI systems should **NOT** reflect biases from the data sets that are used to train the systems.

- A. Mastered
- B. Not Mastered

**Answer:** A

**Explanation:**

**Answer Area**

According to Microsoft's  principle of responsible AI,

AI systems should **NOT** reflect biases from the data sets that are used to train the systems.

**NEW QUESTION 44**

HOTSPOT - (Topic 5)

For each of the following statements, select Yes if the statement is True. Otherwise, select No. NOTE: Each correct selection is worth one point.

**Answer Area**

Statements	Yes	No
A smart device in the home that responds to questions such as "When is my next appointment?" is an example of conversational AI.	<input type="radio"/>	<input type="radio"/>
An interactive webchat feature on a company website can be implemented by using Azure Bot Service.	<input type="radio"/>	<input type="radio"/>
Automatically generating captions for pre-recorded videos is an example of conversational AI.	<input type="radio"/>	<input type="radio"/>

- A. Mastered
- B. Not Mastered

Answer: A

Explanation:

Answer Area

Statements	Yes	No
A smart device in the home that responds to questions such as "When is my next appointment?" is an example of conversational AI.	<input checked="" type="radio"/>	<input type="radio"/>
An interactive webchat feature on a company website can be implemented by using Azure Bot Service.	<input checked="" type="radio"/>	<input type="radio"/>
Automatically generating captions for pre-recorded videos is an example of conversational AI.	<input checked="" type="radio"/>	<input type="radio"/>

NEW QUESTION 49

HOTSPOT - (Topic 5)

Select the answer that correctly completes the sentence

Answer Area

Object detection

Image classification

Image description

Object detection

Optical character recognition (OCR)

is used to identify multiple types of items in one image.

- A. Mastered
- B. Not Mastered

Answer: A

Explanation:

Answer Area

Object detection

Image classification

Image description

Object detection

Optical character recognition (OCR)

is used to identify multiple types of items in one image.

NEW QUESTION 51

- (Topic 5)

You have an Azure Machine Learning pipeline that contains a Split Data module. The Split Data module outputs to a Train Model module and a Score Model module. What is the function of the Split Data module?

- A. selecting columns that must be included in the model
- B. creating training and validation datasets
- C. diverting records that have missing data
- D. scaling numeric variables so that they are within a consistent numeric range

Answer: A

NEW QUESTION 52

HOTSPOT - (Topic 5)

For each of the following statements, select Yes if the statement is true. Otherwise, select No.

NOTE: Each correct selection is worth one point.

Statements	Yes	No
You can use QnA Maker to query an Azure SQL database.	<input type="radio"/>	<input type="radio"/>
You should use QnA Maker when you want a knowledge base to provide the same answer to different users who submit similar questions.	<input type="radio"/>	<input type="radio"/>
The QnA Maker service can determine the intent of a user utterance.	<input type="radio"/>	<input type="radio"/>

- A. Mastered



B. Not Mastered

Answer: A

Explanation:

Statements	Yes	No
You can use QnA Maker to query an Azure SQL database.	<input type="radio"/>	<input checked="" type="radio"/>
You should use QnA Maker when you want a knowledge base to provide the same answer to different users who submit similar questions.	<input checked="" type="radio"/>	<input type="radio"/>
The QnA Maker service can determine the intent of a user utterance.	<input type="radio"/>	<input checked="" type="radio"/>

NEW QUESTION 54

- (Topic 5)  
Which type of natural language processing (NLP) entity is used to identify a phone number?

- A. regular expression
- B. machine-learned
- C. list
- D. Pattern-any

Answer: C

NEW QUESTION 57

HOTSPOT - (Topic 5)  
To complete the sentence, select the appropriate option in the answer area.

Answer Area

An AI solution that helps photographers take better portrait photographs by providing feedback on exposure, noise, and occlusion is an example of facial 

detection.

analysis.

detection.

recognition.

- A. Mastered
- B. Not Mastered

Answer: A

Explanation:

Answer Area

An AI solution that helps photographers take better portrait photographs by providing feedback on exposure, noise, and occlusion is an example of facial 

detection.

analysis.

detection.

recognition.

NEW QUESTION 59

- (Topic 5)  
You are building a chatbot that will use natural language processing (NLP) to perform the following actions based on the text input of a user:

- Accept customer orders.
- Retrieve support documents.
- Retrieve order status updates. Which type of NLP should you use?

- A. sentiment analysis
- B. translation
- C. language modeling
- D. named entity recognition

Answer: D

NEW QUESTION 61

- (Topic 5)

An app that analyzes social media posts to identify their tone is an example of which type of natural language processing (NLP) workload?

- A. sentiment analysis
- B. key phrase extraction
- C. entity recognition
- D. speech recognition

Answer: A

NEW QUESTION 64

HOTSPOT - (Topic 5)

For each of the following statements, select Yes if the statement is true. Otherwise, select No.

NOTE: Each correct selection is worth one point.

Statements	Yes	No
You can communicate with a bot by using Cortana.	<input type="radio"/>	<input type="radio"/>
You can communicate with a bot by using Microsoft Teams.	<input type="radio"/>	<input type="radio"/>
You can communicate with a bot by using a webchat interface.	<input type="radio"/>	<input type="radio"/>

- A. Mastered
- B. Not Mastered

Answer: A

Explanation:

Statements	Yes	No
You can communicate with a bot by using Cortana.	<input checked="" type="radio"/>	<input type="radio"/>
You can communicate with a bot by using Microsoft Teams.	<input checked="" type="radio"/>	<input type="radio"/>
You can communicate with a bot by using a webchat interface.	<input checked="" type="radio"/>	<input type="radio"/>

NEW QUESTION 69

- (Topic 5)

You have a natural language processing (NIP) model that was created by using data obtained without permission. Which Microsoft principle for responsible AI does this breach?

- A. privacy and security
- B. inclusiveness
- C. transparency
- D. reliability and safety

Answer: C

NEW QUESTION 72

DRAG DROP - (Topic 5)

Match the principles of responsible AI to the appropriate descriptions.

To answer, drag the appropriate principle from the column on the left to its description on the right. Each principle may be used once, more than once, or not at all.

NOTE: Each correct match is worth one point.

Principles

Fairness

Inclusiveness

Privacy and securit

Reliability and safe

Answer Area

AI systems must consistently operate as intended, even under unexpected conditions.

AI systems must protect and secure personal and businesses information.

- A. Mastered  
B. Not Mastered

Answer: A

Explanation:

Principles

Fairness

Inclusiveness

Privacy and securit

Reliability and safe

Answer Area

Reliability and safe

AI systems must consistently operate as intended, even under unexpected conditions.

Privacy and securit

AI systems must protect and secure personal and businesses information.

NEW QUESTION 76

HOTSPOT - (Topic 5)

For each of the following statements, select Yes if the statement is true. Otherwise, select No.

NOTE; Each correct selection is worth one point.

Answer Area

Statements

Yes

No

Chatbots can only be built by using custom code.

The Azure Bot Service provides services that can be used to host conversational bots.

Bots built by using the Azure Bot Service can communicate with Microsoft Teams users.

- A. Mastered  
B. Not Mastered

Answer: A

Explanation:

Answer Area

Statements

Yes

No

Chatbots can only be built by using custom code.

The Azure Bot Service provides services that can be used to host conversational bots.

Bots built by using the Azure Bot Service can communicate with Microsoft Teams users.

NEW QUESTION 79

HOTSPOT - (Topic 5)

For each of the following statements, select Yes if the statement is true. Otherwise, select No.

NOTE: Each correct selection is worth one point.

Statements	Yes	No
You can use the Translator service to translate text between languages.	<input type="radio"/>	<input type="radio"/>
You can use the Translator service to detect the language of a given text.	<input type="radio"/>	<input type="radio"/>
You can use the Translator service to transcribe audible speech into text.	<input type="radio"/>	<input type="radio"/>

- A. Mastered
- B. Not Mastered

Answer: A

Explanation:

Statements	Yes	No
You can use the Translator service to translate text between languages.	<input checked="" type="radio"/>	<input type="radio"/>
You can use the Translator service to detect the language of a given text.	<input checked="" type="radio"/>	<input type="radio"/>
You can use the Translator service to transcribe audible speech into text.	<input checked="" type="radio"/>	<input type="radio"/>

NEW QUESTION 81

- (Topic 5)

You need to create a clustering model and evaluate the model by using Azure Machine Learning designer. What should you do?

- A. Split the original dataset into a dataset for features and a dataset for label
- B. Use the features dataset for evaluation.
- C. Split the original dataset into a dataset for training and a dataset for testin
- D. Use the training dataset for evaluation.
- E. Split the original dataset into a dataset for training and a dataset for testin
- F. Use the testing dataset for evaluation.
- G. Use the original dataset for training and evaluation.

Answer: C

NEW QUESTION 86

HOTSPOT - (Topic 5)

To complete the sentence, select the appropriate option in the answer area.

The interactive answering of questions entered by a user as part of an application is an example of

anomaly detection.

computer vision.

conversational AI.

forecasting.

- A. Mastered
- B. Not Mastered

Answer: A

Explanation:

With Microsoft’s Conversational AI tools developers can build, connect, deploy, and manage intelligent bots that naturally interact with their users on a website, app, Cortana, Microsoft Teams, Skype, Facebook Messenger, Slack, and more.

NEW QUESTION 87



- (Topic 5)  
Which two languages can you use to write custom code for Azure Machine Learning designer? Each correct answer presents a complete solution.  
NOTE; Each correct selection is worth one point.

- A. C#
- B. Scala
- C. Python
- D. R

Answer: CD

NEW QUESTION 91  
HOTSPOT - (Topic 5)  
brectly completes the sentence.

Answer Area

A historian can use 

facial analysis  
image classification  
object detection  
optical character recognition (OCR)

 to digitize newspaper articles.

- A. Mastered
- B. Not Mastered

Answer: A

Explanation:

Answer Area

A historian can use 

facial analysis  
image classification  
object detection  
optical character recognition (OCR)

 to digitize newspaper articles.

NEW QUESTION 93  
- (Topic 5)  
Which statement is an example of a Microsoft responsible AI principle?

- A. AI systems must use only publicly available data.
- B. AI systems must protect the interests of the company
- C. AI systems must be understandable.
- D. AI systems must keep personal details public

Answer: C

NEW QUESTION 97  
- (Topic 5)  
You need to develop a chatbot for a website. The chatbot must answer users questions based on the information m the following documents

- A product troubleshooting guide m a Microsoft Word document
- A frequently asked questions (FAQ) list on a webpage

Which service should you use to process the documents?

- A. Language Undemanding
- B. Text Analytics
- C. Azure Bot Service
- D. QnA Maker

Answer: D

NEW QUESTION 99  
HOTSPOT - (Topic 5)  
To complete the sentence, select the appropriate option in the answer area.

Answer Area

An AI solution that helps photographers take better portrait photographs by providing feedback on exposure, noise, and occlusion is an example of facial 

recognition.  
analysis.  
detection.  
recognition.

- A. Mastered
- B. Not Mastered

Answer: A

Explanation:

Answer Area

An AI solution that helps photographers take better portrait photographs by providing feedback on exposure, noise, and occlusion is an example of facial 

recognition.  
analysis.  
detection.  
recognition.

NEW QUESTION 104

- (Topic 5)  
You have an Internet of Things (IoT) device that monitors engine temperature. The device generates an alert if the engine temperature deviates from expected norms. Which type of AI workload does the device represent?

- A. natural language processing (NLP)
- B. computer vision
- C. anomaly detection
- D. knowledge mining

Answer: C

NEW QUESTION 106

HOTSPOT - (Topic 5)  
For each of the following statements. select Yes if the statement is true. Otherwise, select No. NOTE; Each correct selection is worth one point

StatementsYesNo

The Custom Vision service can be used to detect objects in an image.

The Custom Vision service requires that you provide your own data to train the model.

The Custom Vision service can be used to analyze video files.

- A. Mastered
- B. Not Mastered

Answer: A

Explanation:

StatementsYesNo

The Custom Vision service can be used to detect objects in an image.

The Custom Vision service requires that you provide your own data to train the model.

The Custom Vision service can be used to analyze video files.

NEW QUESTION 111

HOTSPOT - (Topic 5)  
For each of the following statements, select Yes if the statement is true. Otherwise, select No. NOTE: Each correct selection is worth one point.

Answer Area

StatementsYesNo

Azure Bot Service and Azure Cognitive Services can be integrated.

Azure Bot Service engages with customers in a conversational manner.

Azure Bot Service can import frequently asked questions (FAQ) to question and answer sets.

- A. Mastered
- B. Not Mastered

Answer: A

**Explanation:**

Box 1: Yes

Azure bot service can be integrated with the powerful AI capabilities with Azure Cognitive Services.

Box 2: Yes

Azure bot service engages with customers in a conversational manner.

Box 3: No

The QnA Maker service creates knowledge base, not question and answers sets.

Note: You can use the QnA Maker service and a knowledge base to add question-and- answer support to your bot. When you create your knowledge base, you seed it with questions and answers.

**NEW QUESTION 113**

HOTSPOT - (Topic 5)

HOTSPOT

For each of the following statements, select Yes if the statement is true. Otherwise, select No.

NOTE: Each correct selection is worth one point.

Statements	Yes	No
You can communicate with a bot by using email.	<input type="radio"/>	<input type="radio"/>
You can communicate with a bot by using Microsoft Teams.	<input type="radio"/>	<input type="radio"/>
You can communicate with a bot by using a webchat interface.	<input type="radio"/>	<input type="radio"/>

A. Mastered

B. Not Mastered

**Answer:** A

**Explanation:**

Statements	Yes	No
You can communicate with a bot by using email.	<input checked="" type="radio"/>	<input type="radio"/>
You can communicate with a bot by using Microsoft Teams.	<input checked="" type="radio"/>	<input type="radio"/>
You can communicate with a bot by using a webchat interface.	<input checked="" type="radio"/>	<input type="radio"/>

**NEW QUESTION 118**

- (Topic 4)

Which AI service can you use to interpret the meaning of a user input such as “Call me back later?”

A. Translator Text

B. Text Analytics

C. Speech

D. Language Understanding (LUIS)

**Answer:** D

**Explanation:**

<https://docs.microsoft.com/en-us/azure/cognitive-services/luis/what-is-luis>

**NEW QUESTION 119**

HOTSPOT - (Topic 4)

For each of the following statements, select Yes if the statement is true. Otherwise, select No.

NOTE: Each correct selection is worth one point.

Statements	Yes	No
You can use the Translator service to translate text between languages.	<input type="radio"/>	<input type="radio"/>
You can use the Translator service to detect the language of a given text.	<input type="radio"/>	<input type="radio"/>
You can use the Translator service to transcribe audible speech into text.	<input type="radio"/>	<input type="radio"/>

- A. Mastered
- B. Not Mastered

**Answer:** A

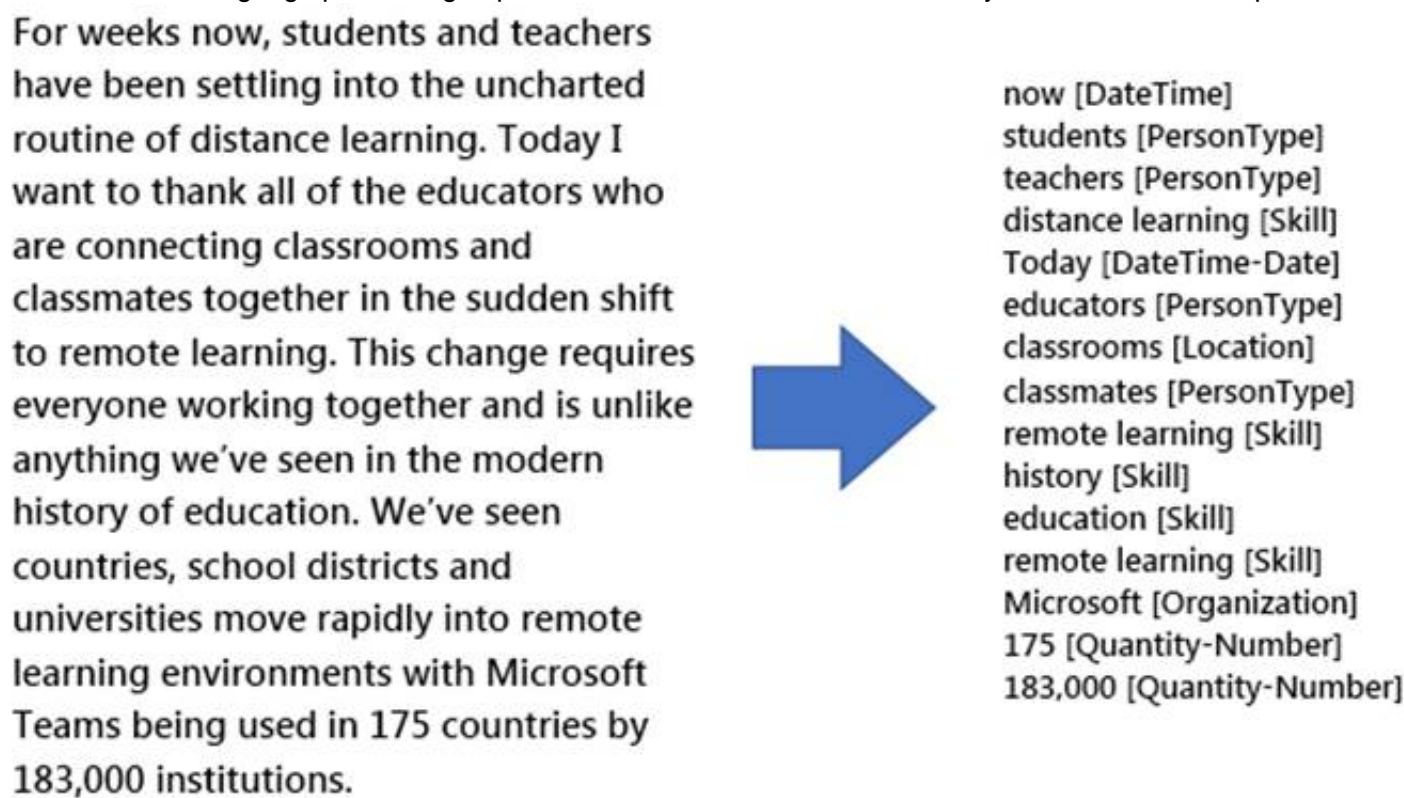
**Explanation:**

The translator service provides multi-language support for text translation, transliteration, language detection, and dictionaries. Speech-to-Text, also known as automatic speech recognition (ASR), is a feature of Speech Services that provides transcription.

**NEW QUESTION 123**

- (Topic 4)

You use natural language processing to process text from a Microsoft news story. You receive the output shown in the following exhibit.



Which type of natural languages processing was performed?

- A. entity recognition
- B. key phrase extraction
- C. sentiment analysis
- D. translation

**Answer:** A

**Explanation:**

<https://docs.microsoft.com/en-us/azure/cognitive-services/text-analytics/overview>

You can provide the Text Analytics service with unstructured text and it will return a list of entities in the text that it recognizes. You can provide the Text Analytics service with unstructured text and it will return a list of entities in the text that it recognizes. The service can also provide links to more information about that entity on the web. An entity is essentially an item of a particular type or a category; and in some cases, subtype, such as those as shown in the following table.

<https://docs.microsoft.com/en-us/learn/modules/analyze-text-with-text-analytics-service/2-get-started-azure>

**NEW QUESTION 125**

- (Topic 4)

You are developing a natural language processing solution in Azure. The solution will analyze customer reviews and determine how positive or negative each review is.

This is an example of which type of natural language processing workload?

- A. language detection
- B. sentiment analysis
- C. key phrase extraction
- D. entity recognition



**Answer:** B

**Explanation:**

Sentiment Analysis is the process of determining whether a piece of writing is positive, negative or neutral.

Reference:

<https://docs.microsoft.com/en-us/azure/architecture/data-guide/technology-choices/natural-language-processing>

**NEW QUESTION 129**

DRAG DROP - (Topic 4)

You plan to apply Text Analytics API features to a technical support ticketing system.

Match the Text Analytics API features to the appropriate natural language processing scenarios.

To answer, drag the appropriate feature from the column on the left to its scenario on the right. Each feature may be used once, more than once, or not at all.

NOTE: Each correct selection is worth one point.

API Features	Answer Area
Entity recognition	API Feature Understand how upset a customer is based on the text contained in the support ticket.
Key phrase extraction	API Feature Summarize important information from the support ticket.
Language detection	API Feature Extract key dates from the support ticket.
Sentiment analysis	

- A. Mastered
- B. Not Mastered

**Answer:** A

**Explanation:**

Box1: Sentiment analysis

Sentiment Analysis is the process of determining whether a piece of writing is positive, negative or neutral.

Box 2: Broad entity extraction

Broad entity extraction: Identify important concepts in text, including key

Key phrase extraction/ Broad entity extraction: Identify important concepts in text, including key phrases and named entities such as people, places, and organizations.

Box 3: Entity Recognition

Named Entity Recognition: Identify and categorize entities in your text as people, places, organizations, date/time, quantities, percentages, currencies, and more.

Well-known entities are also recognized and linked to more information on the web.

**NEW QUESTION 131**

- (Topic 4)

You are developing a Chabot solution in Azure.

Which service should you use to determine a user's intent?

- A. Translator
- B. Azure Cognitive Search
- C. Speech
- D. Language

**Answer:** B

**Explanation:**

Language Understanding (LUIS) is a cloud-based API service that applies custom machine-learning intelligence to a user's conversational, natural language text to predict overall meaning, and pull out relevant, detailed information.

Design your LUIS model with categories of user intentions called intents. Each intent needs examples of user utterances. Each utterance can provide data that needs to be extracted with machine-learning entities.

Reference:

<https://docs.microsoft.com/en-us/azure/cognitive-services/luis/what-is-luis>

**NEW QUESTION 133**

- (Topic 4)

You build a QnA Maker bot by using a frequently asked questions (FAQ) page.

You need to add professional greetings and other responses to make the bot more user friendly.

What should you do?

- A. Increase the confidence threshold of responses
- B. Enable active learning
- C. Create multi-turn questions
- D. Add chit-chat

**Answer:** D

**Explanation:**

Reference:

<https://docs.microsoft.com/en-us/azure/cognitive-services/qnamaker/how-to/chit-chat-knowledge-base?tabs=v1>

NEW QUESTION 138

- (Topic 4)

In which two scenarios can you use a speech synthesis solution? Each correct answer presents a complete solution.

NOTE: Each correct selection is worth one point.

- A. an automated voice that reads back a credit card number entered into a telephone by using a numeric keypad
- B. generating live captions for a news broadcast
- C. extracting key phrases from the audio recording of a meeting
- D. an AI character in a computer game that speaks audibly to a player

Answer: AD

Explanation:

Azure Text to Speech is a Speech service feature that converts text to lifelike speech.

Reference:

<https://azure.microsoft.com/en-in/services/cognitive-services/text-to-speech/>

NEW QUESTION 141

- (Topic 4)

You plan to develop a bot that will enable users to query a knowledge base by using natural language processing.

Which two services should you include in the solution? Each correct answer presents part of the solution.

NOTE: Each correct selection is worth one point.

- A. Language Service
- B. Azure Bot Service
- C. Form Recognizer
- D. Anomaly Detector

Answer: AD

Explanation:

Reference:

<https://docs.microsoft.com/en-us/azure/bot-service/bot-service-overview-introduction?view=azure-bot-service-4.0>

<https://docs.microsoft.com/en-us/azure/cognitive-services/luis/choose-natural-language-processing-service>

NEW QUESTION 146

DRAG DROP - (Topic 4)

Match the types of natural languages processing workloads to the appropriate scenarios.

To answer, drag the appropriate workload type from the column on the left to its scenario on the right. Each workload type may be used once, more than once, or not at all.

NOTE: Each correct selection is worth one point.

Workloads Types	Answer Area
Entity recognition	Workload Type Extracts persons, locations, and organizations from the text
Key phrase extraction	Workload Type Evaluates text along a positive-negative scale
Language modeling	Workload Type Returns text translated to the specified target language
Sentiment analysis	
Natural language processing	
Translation	
Speech recognition and speech synthesis	

- A. Mastered
- B. Not Mastered

Answer: A

Explanation:

Box 1: Entity recognition

Classify a broad range of entities in text, such as people, places, organisations, date/time and percentages, using named entity recognition. Whereas:- Get a list of relevant phrases that best describe the subject of each record using key phrase extraction.

Box 2: Sentiment analysis

Sentiment Analysis is the process of determining whether a piece of writing is positive, negative or neutral.

Box 3: Translation

Using Microsoft's Translator text API

This versatile API from Microsoft can be used for the following: Translate text from one language to another.

Transliterate text from one script to another. Detecting language of the input text.

Find alternate translations to specific text. Determine the sentence length.

NEW QUESTION 147

- (Topic 3)

What are two tasks that can be performed by using the Computer Vision service? Each correct answer presents a complete solution.

NOTE: Each correct selection is worth one point.

- A. Train a custom image classification model.
- B. Detect faces in an image.
- C. Recognize handwritten text.
- D. Translate the text in an image between languages.

**Answer: BC**

**Explanation:**

B: Azure's Computer Vision service provides developers with access to advanced algorithms that process images and return information based on the visual features you're interested in. For example, Computer Vision can determine whether an image contains adult content, find specific brands or objects, or find human faces.

C: Computer Vision includes Optical Character Recognition (OCR) capabilities. You can use the new Read API to extract printed and handwritten text from images and documents.

Reference:

<https://docs.microsoft.com/en-us/azure/cognitive-services/computer-vision/home>

Detect faces in an image - Face API

Microsoft Azure provides multiple cognitive services that you can use to detect and analyze faces, including:

Computer Vision, which offers face detection and some basic face analysis, such as determining age.

Video Indexer, which you can use to detect and identify faces in a video.

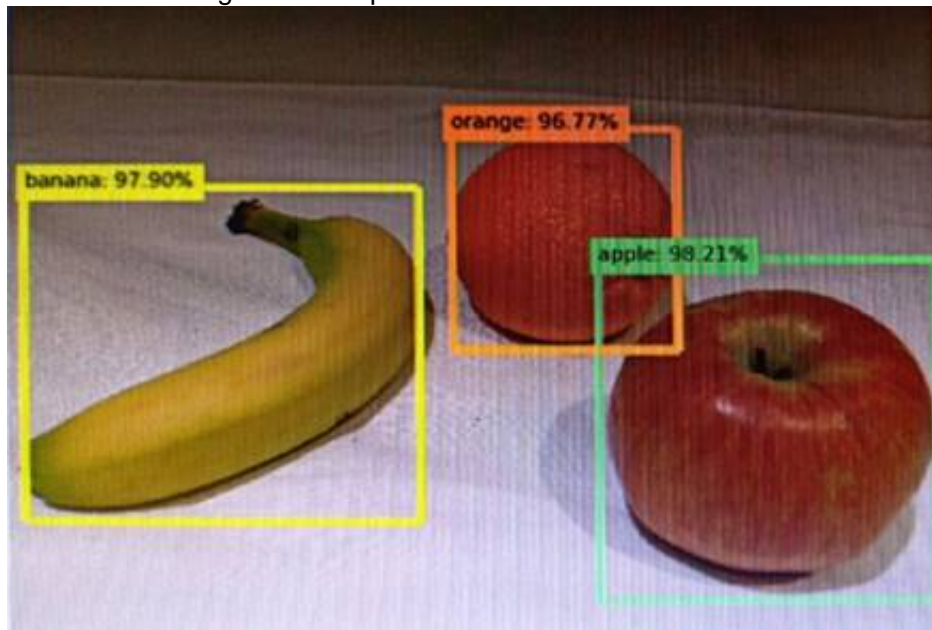
Face, which offers pre-built algorithms that can detect, recognize, and analyze faces. Recognize hand written text - Read API

The Read API is a better option for scanned documents that have a lot of text. The Read API also has the ability to automatically determine the proper recognition model

**NEW QUESTION 148**

- (Topic 3)

You send an image to a Computer Vision API and receive back the annotated image shown in the exhibit.



Which type of computer vision was used?

- A. object detection
- B. semantic segmentation
- C. optical character recognition (OCR)
- D. image classification

**Answer: A**

**Explanation:**

Object detection is similar to tagging, but the API returns the bounding box coordinates (in pixels) for each object found. For example, if an image contains a dog, cat and person, the Detect operation will list those objects together with their coordinates in the image. You can use this functionality to process the relationships between the objects in an image. It also lets you determine whether there are multiple instances of the same tag in an image.

The Detect API applies tags based on the objects or living things identified in the image. There is currently no formal relationship between the tagging taxonomy and the object detection taxonomy. At a conceptual level, the Detect API only finds objects and living things, while the Tag API can also include contextual terms like "indoor", which can't be localized with bounding boxes.

Reference:

<https://docs.microsoft.com/en-us/azure/cognitive-services/computer-vision/concept-object-detection>

**NEW QUESTION 149**

- (Topic 2)

You need to create a training dataset and validation dataset from an existing dataset. Which module in the Azure Machine Learning designer should you use?

- A. Select Columns in Dataset
- B. Add Rows
- C. Split Data
- D. Join Data

**Answer: C**

**Explanation:**

A common way of evaluating a model is to divide the data into a training and test set by

using Split Data, and then validate the model on the training data. Use the Split Data module to divide a dataset into two distinct sets. The studio currently supports training/validation data splits  
Reference:  
<https://docs.microsoft.com/en-us/azure/machine-learning/how-to-configure-cross-validation-data-splits2>

NEW QUESTION 150

- (Topic 2)  
Which type of machine learning should you use to predict the number of gift cards that will be sold next month?

- A. classification
- B. regression
- C. clustering

Answer: B

NEW QUESTION 155

HOTSPOT - (Topic 3)  
To complete the sentence, select the appropriate option in the answer area.

Answer Area

You can use the 

Computer Vision

Custom Vision

Form Recognizer

Video Indexer

 service to train an object detection model by using your own images.

- A. Mastered
- B. Not Mastered

Answer: A

Explanation:

Azure Custom Vision is a cognitive service that lets you build, deploy, and improve your own image classifiers. An image classifier is an AI service that applies labels (which represent classes) to images, according to their visual characteristics. Unlike the Computer Vision service, Custom Vision allows you to specify the labels to apply.  
Note: The Custom Vision service uses a machine learning algorithm to apply labels to images. You, the developer, must submit groups of images that feature and lack the characteristics in question. You label the images yourself at the time of submission. Then the algorithm trains to this data and calculates its own accuracy by testing itself on those same images. Once the algorithm is trained, you can test, retrain, and eventually use it to classify new images according to the needs of your app. You can also export the model itself for offline use.

NEW QUESTION 157

HOTSPOT - (Topic 3)  
For each of the following statements, select Yes if the statement is true. Otherwise, select No.  
NOTE: Each correct selection is worth one point.

Statements	Yes	No
The Custom Vision service can be used to detect objects in an image.	<input type="radio"/>	<input type="radio"/>
The Custom Vision service requires that you provide your own data to train the model.	<input type="radio"/>	<input type="radio"/>
The Custom Vision service can be used to analyze video files.	<input type="radio"/>	<input type="radio"/>

- A. Mastered
- B. Not Mastered

Answer: A

Explanation:

Box 1: Yes  
Custom Vision functionality can be divided into two features. Image classification applies one or more labels to an image. Object detection is similar, but it also returns the coordinates in the image where the applied label(s) can be found.  
Box 2: Yes  
The Custom Vision service uses a machine learning algorithm to analyze images. You, the developer, submit groups of images that feature and lack the characteristics in question. You label the images yourself at the time of submission. Then, the algorithm trains to this data and calculates its own accuracy by testing itself on those same images.  
Box 3: No  
Custom Vision service can be used only on graphic files.



### NEW QUESTION 160

HOTSPOT - (Topic 2)

To complete the sentence, select the appropriate option in the answer area.

	▼
Accuracy	
Confidence	
Root Mean Square Error	
Sentiment	

is the calculated probability of a correct image classification.

- A. Mastered
- B. Not Mastered

**Answer:** A

**Explanation:**

	▼
Accuracy	
Confidence	
Root Mean Square Error	
Sentiment	

is the calculated probability of a correct image classification.

### NEW QUESTION 162

- (Topic 2)

You have a dataset that contains information about taxi journeys that occurred during a given period.

You need to train a model to predict the fare of a taxi journey. What should you use as a feature?

- A. the number of taxi journeys in the dataset
- B. the trip distance of individual taxi journeys
- C. the fare of individual taxi journeys
- D. the trip ID of individual taxi journeys

**Answer:** B

**Explanation:**

The label is the column you want to predict. The identified Features are the inputs you give the model to predict the Label.

Example:

The provided data set contains the following columns:

vendor\_id: The ID of the taxi vendor is a feature. rate\_code: The rate type of the taxi trip is a feature.

passenger\_count: The number of passengers on the trip is a feature.

trip\_time\_in\_secs: The amount of time the trip took. You want to predict the fare of the trip before the trip is completed. At that moment, you don't know how long the trip would take.

Thus, the trip time is not a feature and you'll exclude this column from the model. trip\_distance: The distance of the trip is a feature.

payment\_type: The payment method (cash or credit card) is a feature. fare\_amount: The total taxi fare paid is the label.

Reference:

<https://docs.microsoft.com/en-us/dotnet/machine-learning/tutorials/predict-prices>

### NEW QUESTION 164

HOTSPOT - (Topic 2)

You have the following dataset.

Household Income	Postal Code	House Price Category
20,000	55555	Low
23,000	20541	Middle
80,000	87960	High

You plan to use the dataset to train a model that will predict the house price categories of houses.

What are Household Income and House Price Category? To answer, select the appropriate option in the answer area.

NOTE: Each correct selection is worth one point.

#### Answer Area

Household Income:

▼

▼

A feature

A label

House Price Category:

▼

▼

A feature

A label

- A. Mastered
- B. Not Mastered

**Answer:** A

**Explanation:**

Box 1: A feature Box 2: A label

**NEW QUESTION 166**

- (Topic 2)

You use Azure Machine Learning designer to publish an inference pipeline.

Which two parameters should you use to consume the pipeline? Each correct answer presents part of the solution.

NOTE: Each correct selection is worth one point.

- A. the model name
- B. the training endpoint
- C. the authentication key
- D. the REST endpoint

**Answer:** CD

**Explanation:**

<https://docs.microsoft.com/en-in/learn/modules/create-regression-model-azure-machine-learning-designer/deploy-service>

**NEW QUESTION 169**

HOTSPOT - (Topic 2)

HOTSPOT

For each of the following statements, select Yes if the statement is true. Otherwise, select No.

NOTE: Each correct selection is worth one point.

Statements	Yes	No
Organizing documents into groups based on similarities of the text contained in the documents is an example of clustering.	<input type="radio"/>	<input type="radio"/>
Grouping similar patients based on symptoms and diagnostic test results is an example of clustering.	<input type="radio"/>	<input type="radio"/>
Predicting whether a person will develop mild, moderate, or severe allergy symptoms based on pollen count is an example of clustering.	<input type="radio"/>	<input type="radio"/>

- A. Mastered
- B. Not Mastered

**Answer:** A

**Explanation:**

Clustering is a machine learning task that is used to group instances of data into clusters that contain similar characteristics. Clustering can also be used to identify relationships in a dataset

Regression is a machine learning task that is used to predict the value of the label from a set of related features.

**NEW QUESTION 171**

- (Topic 2)

You are evaluating whether to use a basic workspace or an enterprise workspace in Azure Machine Learning.

What are two tasks that require an enterprise workspace? Each correct answer presents a complete solution.

NOTE: Each correct selection is worth one point.

- A. Use a graphical user interface (GUI) to run automated machine learning experiments.
- B. Create a compute instance to use as a workstation.
- C. Use a graphical user interface (GUI) to define and run machine learning experiments from Azure Machine Learning designer.
- D. Create a dataset from a comma-separated value (CSV) file.

**Answer:** AC

**Explanation:**

Note: Enterprise workspaces are no longer available as of September 2020. The basic workspace now has all the functionality of the enterprise workspace.

Reference:

<https://www.azure.cn/en-us/pricing/details/machine-learning/> <https://docs.microsoft.com/en-us/azure/machine-learning/concept-workspace>

**NEW QUESTION 173**

- (Topic 2)

You need to predict the sea level in meters for the next 10 years. Which type of machine learning should you use?

- A. classification
- B. regression
- C. clustering

**Answer:** C

**Explanation:**

In the most basic sense, regression refers to prediction of a numeric target. Linear regression attempts to establish a linear relationship between one or more independent variables and a numeric outcome, or dependent variable.

You use this module to define a linear regression method, and then train a model using a labeled dataset. The trained model can then be used to make predictions.

Reference:

<https://docs.microsoft.com/en-us/azure/machine-learning/studio-module-reference/linear-regression>

Regression is a form of machine learning that is used to predict a numeric label based on an item's features.

<https://docs.microsoft.com/en-us/learn/modules/create-regression-model-azure-machine-learning-designer/introduction>

**NEW QUESTION 178**

HOTSPOT - (Topic 2)

For each of the following statements, select Yes if the statement is true. Otherwise, select No.

NOTE: Each correct selection is worth one point.

**Answer Area**

Statements	Yes	No
Labelling is the process of tagging training data with known values.	<input type="radio"/>	<input type="radio"/>
You should evaluate a model by using the same data used to train the model.	<input type="radio"/>	<input type="radio"/>
Accuracy is always the primary metric used to measure a model's performance.	<input type="radio"/>	<input type="radio"/>

- A. Mastered
- B. Not Mastered

**Answer:** A

**Explanation:**

Box 1: Yes

In machine learning, if you have labeled data, that means your data is marked up, or annotated, to show the target, which is the answer you want your machine learning model to predict.

In general, data labeling can refer to tasks that include data tagging, annotation, classification, moderation, transcription, or processing.

Box 2: No

Box 3: No

Accuracy is simply the proportion of correctly classified instances. It is usually the first metric you look at when evaluating a classifier. However, when the test data is unbalanced (where most of the instances belong to one of the classes), or you are more interested in the performance on either one of the classes, accuracy doesn't really capture the effectiveness of a classifier.

**NEW QUESTION 179**

HOTSPOT - (Topic 2)

For each of the following statements, select Yes if the statement is true. Otherwise, select No.

NOTE: Each correct selection is worth one point.

**Answer Area**

Statements	Yes	No
Automated machine learning is the process of automating the time-consuming, iterative tasks of machine learning model development.	<input type="radio"/>	<input type="radio"/>
Automated machine learning can automatically infer the training data from the use case provided.	<input type="radio"/>	<input type="radio"/>
Automated machine learning works by running multiple training iterations that are scored and ranked by the metrics you specify.	<input type="radio"/>	<input type="radio"/>
Automated machine learning enables you to specify a dataset and will automatically understand which label to predict.	<input type="radio"/>	<input type="radio"/>

- A. Mastered
- B. Not Mastered

Answer: A

**Explanation:**

Box 1: Yes

Automated machine learning, also referred to as automated ML or AutoML, is the process of automating the time consuming, iterative tasks of machine learning model development. It allows data scientists, analysts, and developers to build ML models with high scale, efficiency, and productivity all while sustaining model quality.

Box 2: No

Box 3: Yes

During training, Azure Machine Learning creates a number of pipelines in parallel that try different algorithms and parameters for you. The service iterates through ML algorithms paired with feature selections, where each iteration produces a model with a training score. The higher the score, the better the model is considered to "fit" your data. It will stop once it hits the exit criteria defined in the experiment.

Box 4: No

Apply automated ML when you want Azure Machine Learning to train and tune a model for you using the target metric you specify.

The label is the column you want to predict.

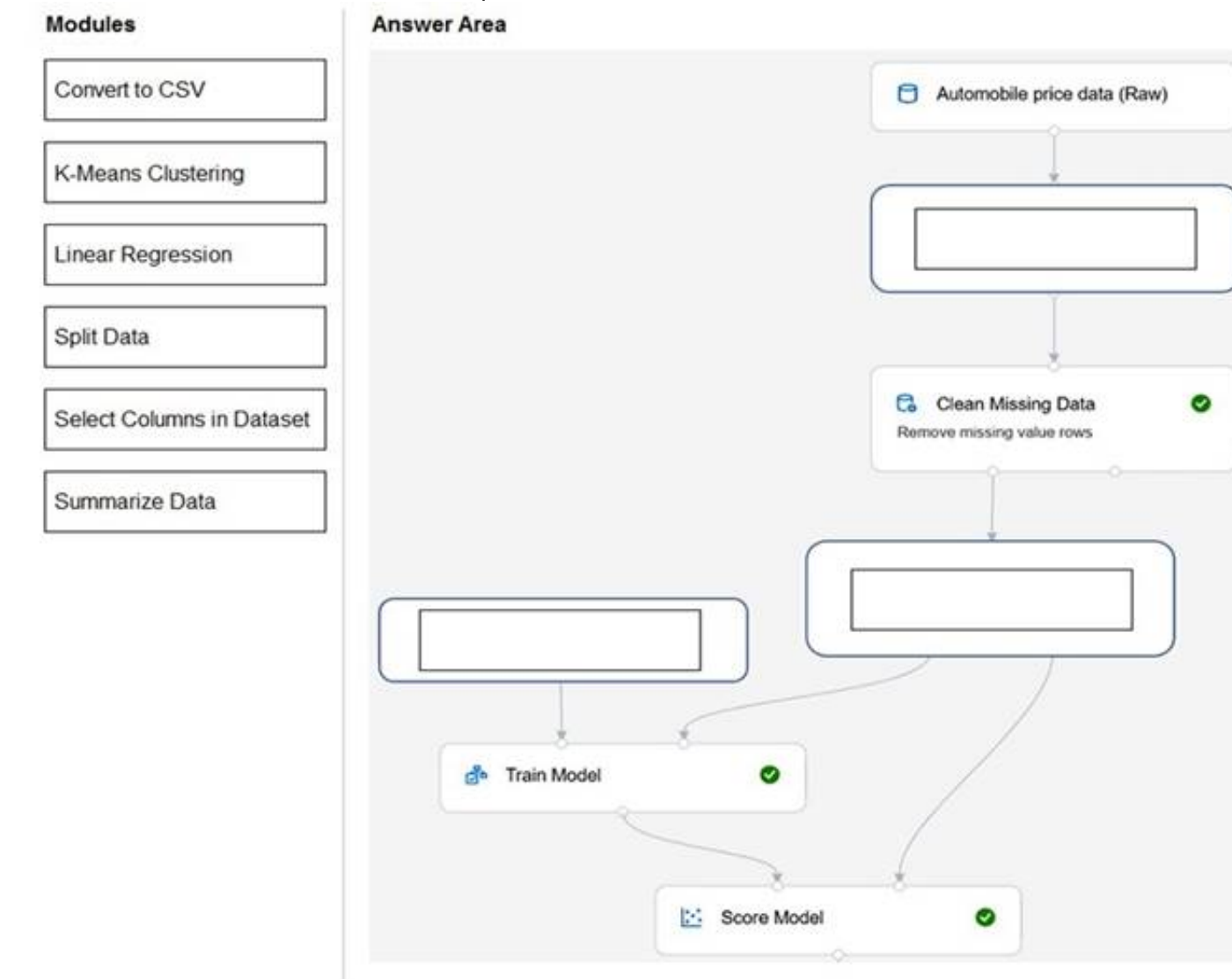
**NEW QUESTION 182**

DRAG DROP - (Topic 2)

You need to use Azure Machine Learning designer to build a model that will predict automobile prices.

Which type of modules should you use to complete the model? To answer, drag the appropriate modules to the correct locations. Each module may be used once, more than once, or not at all. You may need to drag the split bar between panes or scroll to view content.

NOTE: Each correct selection is worth one point.



- A. Mastered
- B. Not Mastered

Answer: A

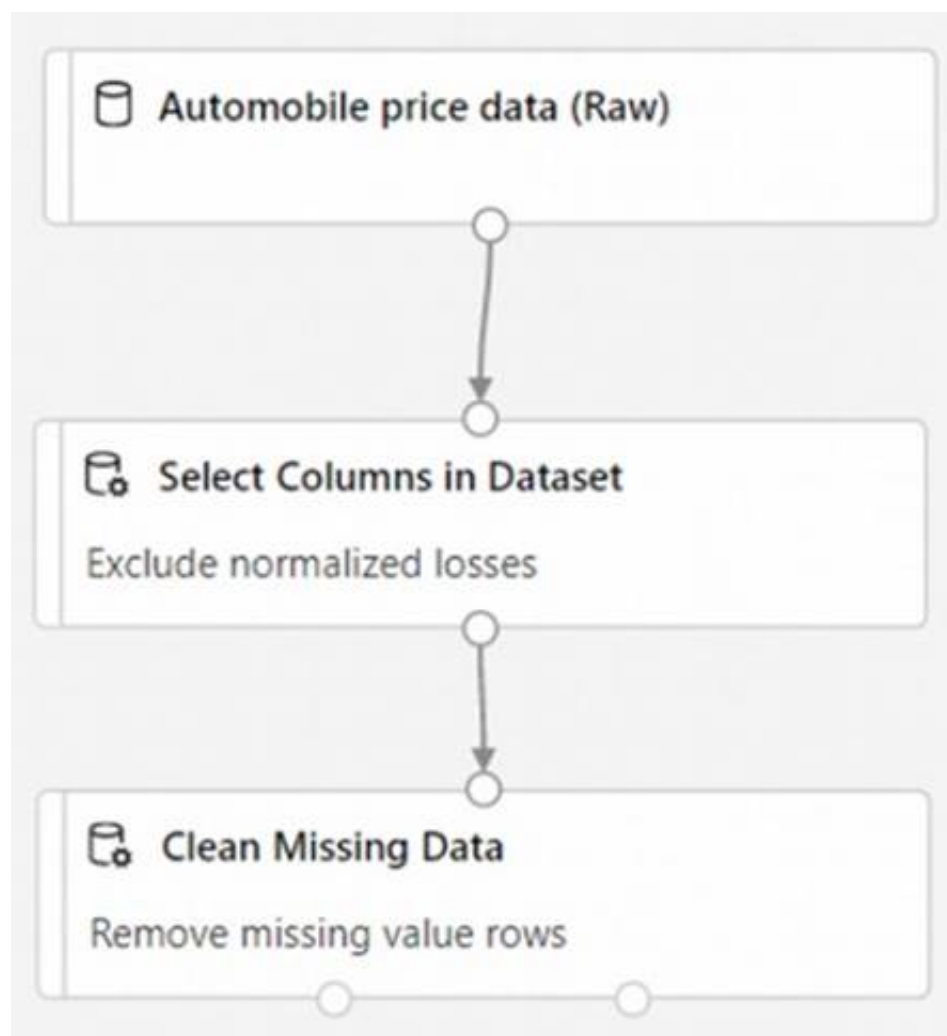
**Explanation:**

Box 1: Select Columns in Dataset

For Columns to be cleaned, choose the columns that contain the missing values you want to change. You can choose multiple columns, but you must use the same replacement method in all selected columns.

Example:





Box 2: Split data

Splitting data is a common task in machine learning. You will split your data into two separate datasets. One dataset will train the model and the other will test how well the model performed.

Box 3: Linear regression

Because you want to predict price, which is a number, you can use a regression algorithm. For this example, you use a linear regression model.

#### NEW QUESTION 187

- (Topic 1)

For a machine learning progress, how should you split data for training and evaluation?

- A. Use features for training and labels for evaluation.
- B. Randomly split the data into rows for training and rows for evaluation.
- C. Use labels for training and features for evaluation.
- D. Randomly split the data into columns for training and columns for evaluation.

**Answer: B**

**Explanation:**

<https://docs.microsoft.com/en-us/azure/machine-learning/algorithm-module-reference/split-data>

#### NEW QUESTION 189

- (Topic 1)

You run a charity event that involves posting photos of people wearing sunglasses on Twitter.

You need to ensure that you only retweet photos that meet the following requirements:

Include one or more faces.

Contain at least one person wearing sunglasses. What should you use to analyze the images?

- A. the Verify operation in the Face service
- B. the Detect operation in the Face service
- C. the Describe Image operation in the Computer Vision service
- D. the Analyze Image operation in the Computer Vision service

**Answer: B**

**Explanation:**

Reference:

<https://docs.microsoft.com/en-us/azure/cognitive-services/face/overview>

#### NEW QUESTION 193

HOTSPOT - (Topic 1)

For each of the following statements, select Yes if the statement is true. Otherwise, select No.

NOTE: Each correct selection is worth one point.

Answer Area

Statements	Yes	No
Forecasting housing prices based on historical data is an example of anomaly detection.	<input type="radio"/>	<input type="radio"/>
Identifying suspicious sign-ins by looking for deviations from usual patterns is an example of anomaly detection.	<input type="radio"/>	<input type="radio"/>
Predicting whether a patient will develop diabetes based on the patient's medical history is an example of anomaly detection.	<input type="radio"/>	<input type="radio"/>

- A. Mastered
- B. Not Mastered

Answer: A

Explanation:

Box 1: No  
Box 2: Yes  
Box 3: Yes  
Anomaly detection encompasses many important tasks in machine learning:  
Identifying transactions that are potentially fraudulent.  
Learning patterns that indicate that a network intrusion has occurred. Finding abnormal clusters of patients.  
Checking values entered into a system.

NEW QUESTION 198

DRAG DROP - (Topic 1)  
Match the principles of responsible AI to appropriate requirements.  
To answer, drag the appropriate principles from the column on the left to its requirement on the right. Each principle may be used once, more than once, or not at all. You may need to drag the split bar between panes or scroll to view content.  
NOTE: Each correct selection is worth one point.

Principles

Fairness

Privacy and security

Reliability and safety

Transparency

Answer Area

The system must not discriminate based on gender, race

Personal data must be visible only to approve

Automated decision-making processes must be recorded so that approved users can identify why a decision was made

- A. Mastered
- B. Not Mastered

Answer: A

Explanation:

Principles

Fairness

Privacy and security

Reliability and safety

Transparency

Answer Area

Fairness

Privacy and security

Transparency

The system must not discriminate based on gender, race

Personal data must be visible only to approve

Automated decision-making processes must be recorded so that approved users can identify why a decision was made

NEW QUESTION 200

- (Topic 1)  
When you design an AI system to assess whether loans should be approved, the factors used to make the decision should be explainable.  
This is an example of which Microsoft guiding principle for responsible AI?

- A. transparency
- B. inclusiveness
- C. fairness
- D. privacy and security

Answer: A

Explanation:

Achieving transparency helps the team to understand the data and algorithms used to train the model, what transformation logic was applied to the data, the final model generated, and its associated assets. This information offers insights about how the model was created, which allows it to be reproduced in a transparent

way.

Reference:

<https://docs.microsoft.com/en-us/azure/cloud-adoption-framework/innovate/best-practices/trusted-ai>

<https://docs.microsoft.com/en-us/azure/cloud-adoption-framework/strategy/responsible-ai>

#### NEW QUESTION 201

HOTSPOT - (Topic 1)

To complete the sentence, select the appropriate option in the answer area.

#### Answer Area

The handling of unusual or missing values provided to an AI system is a consideration for the Microsoft  principle for responsible AI.

- inclusiveness
- privacy and security
- reliability and safety
- transparency

A. Mastered

B. Not Mastered

**Answer:** A

#### Explanation:

Reliability & Safety [https://en.wikipedia.org/wiki/Tay\\_\(bot\)](https://en.wikipedia.org/wiki/Tay_(bot))

“To build trust, it's critical that AI systems operate reliably, safely, and consistently under normal circumstances and in unexpected conditions. These systems should be able to

operate as they were originally designed, respond safely to unanticipated conditions, and resist harmful manipulation. It's also important to be able to verify that these systems are behaving as intended under actual operating conditions. How they behave and the variety of conditions they can handle reliably and safely largely reflects the range of situations and circumstances that developers anticipate during design and testing. We believe that rigorous testing is essential during system development and deployment to ensure AI systems can respond safely in unanticipated situations and edge cases, don't have unexpected performance failures, and don't evolve in ways that are inconsistent with original expectations”

#### NEW QUESTION 202

- (Topic 1)

You are building an AI system.

Which task should you include to ensure that the service meets the Microsoft transparency principle for responsible AI?

- A. Ensure that all visuals have an associated text that can be read by a screen reader.
- B. Enable autoscaling to ensure that a service scales based on demand.
- C. Provide documentation to help developers debug code.
- D. Ensure that a training dataset is representative of the population.

**Answer:** C

#### Explanation:

Reference:

<https://docs.microsoft.com/en-us/learn/modules/responsible-ai-principles/4-guiding-principles>

#### NEW QUESTION 206

.....

## Thank You for Trying Our Product

### We offer two products:

1st - We have Practice Tests Software with Actual Exam Questions

2nd - Questons and Answers in PDF Format

### AI-900 Practice Exam Features:

- \* AI-900 Questions and Answers Updated Frequently
- \* AI-900 Practice Questions Verified by Expert Senior Certified Staff
- \* AI-900 Most Realistic Questions that Guarantee you a Pass on Your FirstTry
- \* AI-900 Practice Test Questions in Multiple Choice Formats and Updatesfor 1 Year

**100% Actual & Verified — Instant Download, Please Click**  
**[Order The AI-900 Practice Test Here](#)**