

Exam Questions HPE6-A72

Aruba Certified Switching Associate Exam

<https://www.2passeasy.com/dumps/HPE6-A72/>



NEW QUESTION 1

Refer to the exhibit.

```
Access-1(config-if)# show run int 1/1/1
interface 1/1/1
  no shutdown
  no routing
  vlan trunk native 1
  vlan trunk allowed all
  exit
Access-1(config-if)# vlan 100
Access-1(config-vlan-100)# exit
Access-1(config)#
```

What commands will successfully enable the SVI for vlan 100 on interface 1/1/1 to produce the results displayed in the command show ip interface brief in the exhibit below?

```
Access-1(config)# show ip interface brief
```

Interface	IP Address	Interface Status link/admin
1/1/2	No Address	down/down
1/1/3	No Address	down/down
1/1/4	No Address	down/down
1/1/5	No Address	down/down
Vlan100	10.1.1.1/24	up/up

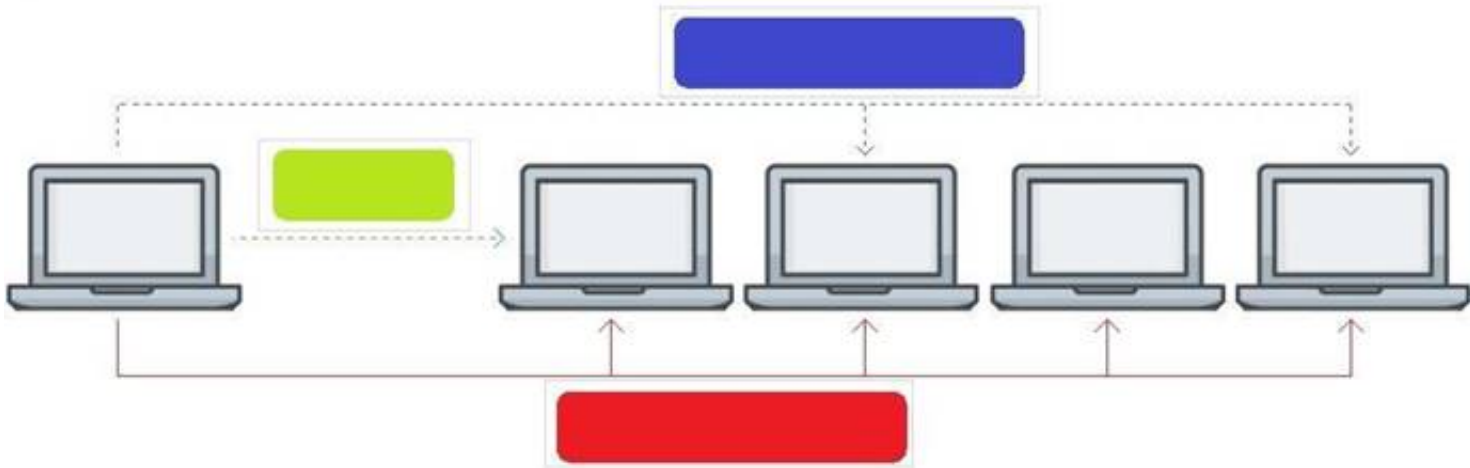
- A. Access-1(config)# interface 1/1/1 Access-1(config-if)# routingAccess-1(config-if)# interface vlan 100Access-1(config-if-vlan)# ip address 10.1.1.1/24
- B. Access-1(config)# interface 1/1/1Access-1(config-if)# vlan trunk permit vlan 100 Access-1(config-if)# interface vlan 100Access-1(config-if-vlan)# ip address static 10.1.1.1/24
- C. Access-1(config)# interface vlan 100Access-1(config-if-vlan)# ip address 10.1.1.1/24
- D. Access-1(config-if)# vlan 100Access-1(config-vlan)# ip address 10.1.1.1/24

Answer: C

NEW QUESTION 2

Click on the colored box that corresponds with the line that best represents Multicast traffic flow.

Answer Area



- A. Mastered
- B. Not Mastered

Answer: A

Explanation:

Diagram Description automatically generated
Blue Box

NEW QUESTION 3

Match the term to the correct description.

Term	Description
BGP	used for creating backup routes by implementing a higher administrative distance
Floating Static Routes	a distance vector protocol
OSPFv2	an ipv4 link-state routing protocol that runs within an Autonomous System
OSPFv3	used to route traffic between Autonomous Systems
RIPv2	a routing protocol capable of routing IPv6 packets

- A. Mastered
 B. Not Mastered

Answer: A

Explanation:

Term	Description
BGP	Floating Static Routes used for creating backup routes by implementing a higher administrative distance
Floating Static Routes	RIPv2 a distance vector protocol
OSPFv2	OSPFv2 an ipv4 link-state routing protocol that runs within an Autonomous System
OSPFv3	BGP used to route traffic between Autonomous Systems
RIPv2	OSPFv3 a routing protocol capable of routing IPv6 packets

NEW QUESTION 4

What is an available command on an Aruba AOS-CX switch that would back up the secondary image to a secure remote repository?

- A. backup secondary sftp://admin@10.1.1.21/GL.10.04.0003.swi
 B. copy secondary sftp://admin@10.1.1.21/GL.10.04.0003.swi
 C. copy sftp://admin@10.1.1.21/GL.10.04.0003.swi secondary
 D. copy secondary tftp://admin@10.1.1.21/GL.10.04.0003.swi

Answer: B

NEW QUESTION 5

Refer to the exhibit.

Internet Protocol Version 4 (TCP/IPv4) Properties

General

You can get IP settings assigned automatically if your network supports this capability. Otherwise, you need to ask your network administrator for the appropriate IP settings.

☐ Obtain an IP address automatically

☒ Use the following IP address:

IP address: 10 . 177 . 213 . 75

Subnet mask: 255 . 255 . 248 . 0

Default gateway: 10 . 177 . 208 . 1

☐ Obtain DNS server address automatically

☒ Use the following DNS server addresses:

Preferred DNS server: . . .

Alternate DNS server: . . .

☐ Validate settings upon exit

Advanced...

OK Cancel

Using the static IP address configured above, what is the converted binary value of the third octet assigned to the local interface?

- A. 11010101
- B. 10110001
- C. 01001011
- D. 11111000

Answer: A

NEW QUESTION 6

Match each network protocol to the correct default listening port and transport protocol. Not all answers will be used.

Default Port and Transport protocol		Network protocol
TCP 20, TCP 21	<input type="text"/>	<input type="text" value="DNS"/>
TCP 23	<input type="text"/>	<input type="text" value="FTP"/>
TCP 53	<input type="text"/>	<input type="text" value="HTTPS"/>
TCP 443	<input type="text"/>	<input type="text" value="Telnet"/>
UDP 20, UDP 21	<input type="text"/>	<input type="text" value="DHCP"/>
UDP 23	<input type="text"/>	
UDP 53	<input type="text"/>	
UDP 67	<input type="text"/>	

- A. Mastered
- B. Not Mastered

Answer: A

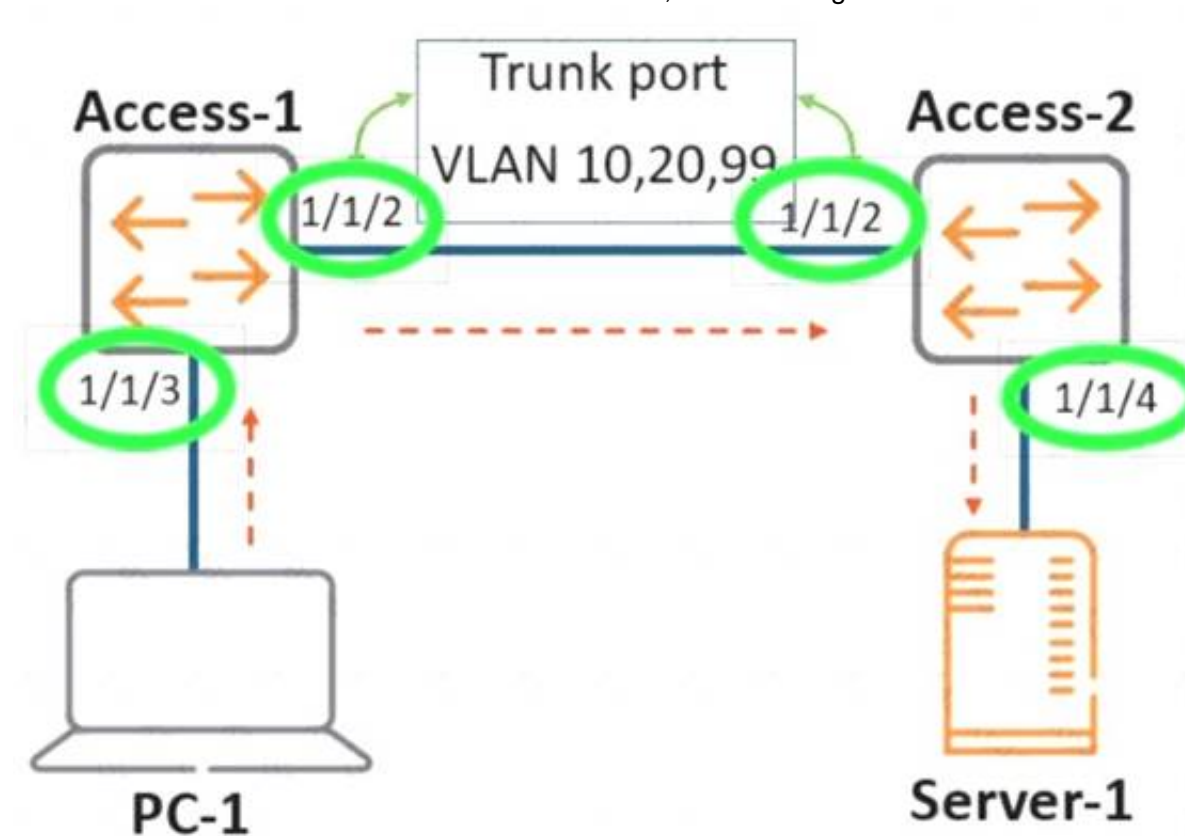
Explanation:

Default Port and Transport protocol		Network protocol
TCP 20, TCP 21	FTP	DNS
TCP 23	Telnet	FTP
TCP 53		HTTPS
TCP 443	HTTPS	Telnet
UDP 20, UDP 21		DHCP
UDP 23		
UDP 53	DNS	
UDP 67	DHCP	

NEW QUESTION 7

Review the exhibit.

As the frame traverses from **PC-1** to **Server-1**, the VLAN tag will be removed. Click on the interface (circled in green) where the VLAN tag will be removed.



- A. Mastered
- B. Not Mastered

Answer: A

Explanation:

Diagram Description automatically generated
 Port 1/1/4 on Access-2.

NEW QUESTION 8

Which two options are correct regarding the IEEE 802.11ax standard? (Choose two.)

- A. allows transmissions of up to 4.8Gbps
- B. is an emerging satellite connection standard to allow wireless access anywhere in the world
- C. operates only in the 5GHz similar to 802.11ac
- D. operates in both the 2.4GHz and 5GHz radios bands
- E. is the first WLAN standard to no longer use electromagnetic signals to transmit data

Answer: AD

NEW QUESTION 9

Interface 1/1/1 is up

Admin state is up
 Link transitions: 1
 Description: TO_PC-1
 Hardware: Ethernet, MAC Address: 00:11:22:33:44:55
 MTU 1500
 Type 1GbT
 Full-duplex qos trust none
 Speed 1000 Mb/s
 Auto-negotiation is on Flow-control: off Error-control: off MDI mode: MDIX VLAN Mode: access Access VLAN: 1111
 Which command will produce the above output?

- A. show interface vlan 1111
- B. show interface 1/1/1
- C. show interface gigabit 1/1/1
- D. show vlan 1111

Answer: B

NEW QUESTION 10

Which two types of routes can be found in the IP routing table of an Aruba AOS-CX switch? (Choose two.)

- A. Local
- B. EIGRP
- C. BGP
- D. ISIS
- E. RIPvng

Answer: AC

NEW QUESTION 10

You need to remote into an AOS-CX switch using SSH in order to update the management IP address for future connections. Unfortunately, you mis-configured the IP address and are now locked out of the switch.

What command could you have issued before making changes that would have recovered the original switch configuration after ten minutes?

- A. checkpoint rollback 10
- B. checkpoint auto 10
- C. checkpoint auto confirm 10
- D. boot system secondary 10

Answer: B

NEW QUESTION 15

Which command can be used to find the serial number of an Aruba OS-CX switch?

- A. The command inventory
- B. The command version
- C. The command show running-configuration
- D. The command show system

Answer: D

NEW QUESTION 19

Refer to the exhibit.

```
Ethernet adapter Ethernet 3:

Connection-specific DNS Suffix . : 
Description . . . . . : Killer E2200 Gigabit Ethernet Controller #2 #2 #2
Physical Address. . . . . : D8-CB-8A-17-8D-ED
DHCP Enabled. . . . . : No
Autoconfiguration Enabled . . . . : Yes
Link-local IPv6 Address . . . . . : fe80::d1ea:377f:5154:9f53%3(Preferred)
IPv4 Address. . . . . : 192.168.1.10(Preferred)
Subnet Mask . . . . . : 255.255.255.0
Default Gateway . . . . . : 192.168.1.1
```

What is the correct binary conversion of the last two hexadecimal characters of the physical address?

- A. 1101 1000
- B. 1110 1101
- C. 1001 1111 0101 0011
- D. 1000 1101 1110 1101

Answer: B

NEW QUESTION 24

What are two OSPF attributes within the hello messages that must match to successfully establish neighbor relationships? (Choose two.)

- A. Router ID
- B. Priority
- C. Hello and Dead intervals
- D. Area ID
- E. Process ID

Answer: CD

NEW QUESTION 25

The section in blue can be ignored.

SW1(config)# interface 1/1/1-1/1/2

SW1(config-if-<1/1/1-1/1/2)# vlan access 2

SW1(config-if-<1/1/1-1/1/2)# exit

SW1(config)# interface 1/1/11-1/1/17

SW1(config-if-<1/1/11-1/1/17)# vlan access 17

SW1(config-if-<1/1/11-1/1/17)# exit

After completing the above commands, what is the expected output of show vlan with no other vlan commanded having been added?

A.

```
SW1# show vlan
```

VLAN	Name	Status	Reason	Type	Interfaces
1	DEFAULT_VLAN_1	up	ok	default	1/1/2
2		up	ok	static	1/1/2
11		up	ok	static	1/1/17
12		up	ok	static	1/1/17
13		up	ok	static	1/1/17
14		up	ok	static	1/1/17
15		up	ok	static	1/1/17
16		up	ok	static	1/1/17
17		up	ok	static	1/1/17

B.

```
SW1# show vlan
```

VLAN	Name	Status	Reason	Type	Interfaces
1	DEFAULT_VLAN_1	up	ok	default	1/1/1-1/1/24
2		up	ok	static	1/1/1-1/1/2
17		up	ok	static	1/1/11-1/1/17

C.

```
SW1# show vlan
```

VLAN	Name	Status	Reason	Type	Interfaces
2	DEFAULT_VLAN_2	up	ok	static	1/1/1-1/1/2
17		up	ok	static	1/1/11-1/1/17

D.

```
SW1# show vlan
```

VLAN	Name	Status	Reason	Type	Interfaces
1	DEFAULT_VLAN_1	up	ok	default	<output omitted>
2		up	ok	static	1/1/1-1/1/2
17		up	ok	static	1/1/11-1/1/17

- A. Option A
- B. Option B
- C. Option C
- D. Option D

Answer: D

NEW QUESTION 27

Match the terms to the correct layer of the OSI model.

Layer		Term
Transport Layer		Frames
Network Layer		Packets
Physical Layer		RF Signals
Data Link Layer		Segments

- A. Mastered
 B. Not Mastered

Answer: A

Explanation:

Layer		Term
Transport Layer	Data Link Layer	Frames
Network Layer	Network Layer	Packets
Physical Layer	Physical Layer	RF Signals
Data Link Layer	Transport Layer	Segments

NEW QUESTION 28

Which field in the IPv4 header indicates whether the IP packet carries TCP or UDP traffic?

- A. Protocol
 B. IHL
 C. TTL
 D. Identification

Answer: A

NEW QUESTION 31

Refer to the exhibit.

VLAN	Name	Mode	Mapping
1	DEFAULT_VLAN_1	native-untagged	port
10	Sales	trunk	port
20	Service	trunk	port
30	Customer	trunk	port

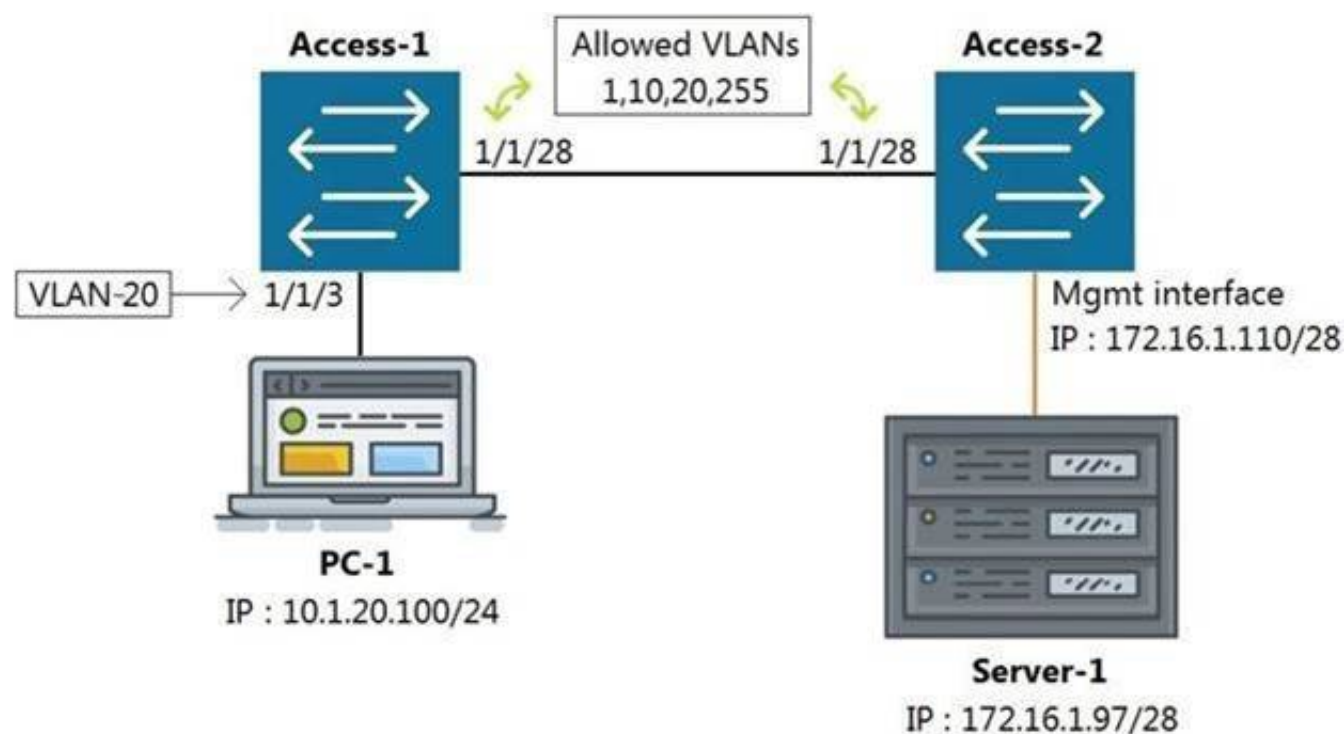
Which command produces the above output?

- A. show interface port 1/1/10 trunk
 B. show vlan port 1/1/10
 C. show trunk port 1/1/10 extended
 D. show interface port 1/1/10 switchport

Answer: C

NEW QUESTION 35

Refer to the exhibit.



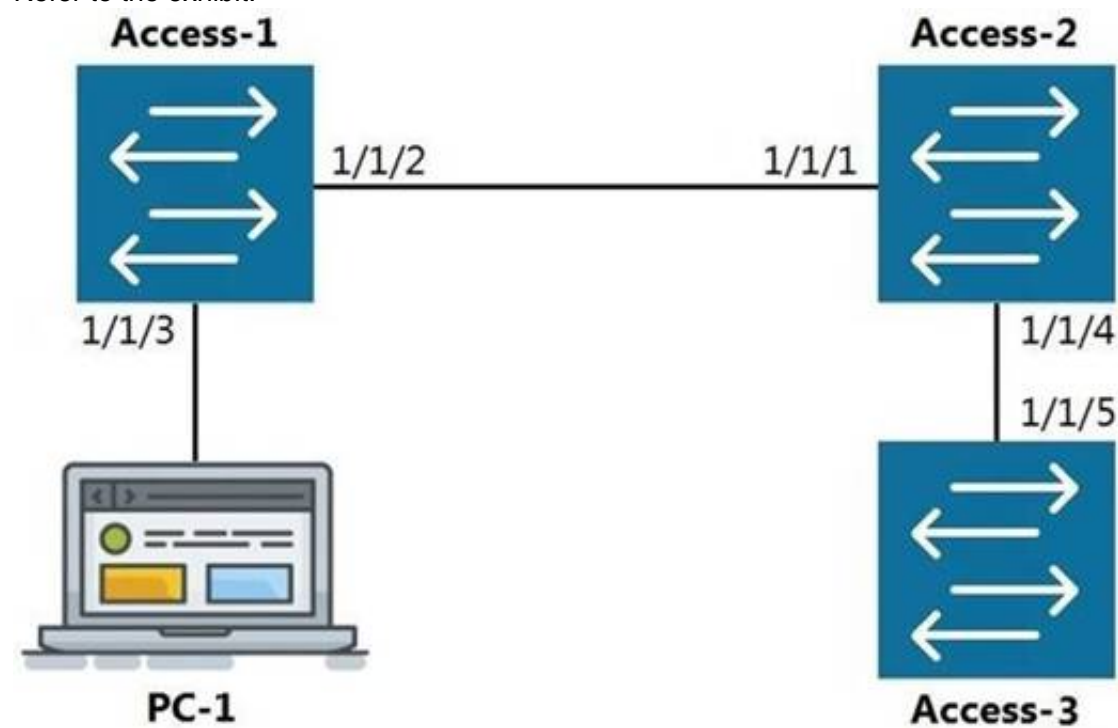
All switches are running Aruba OS-CX. While working in the terminal of Access-2, you are unable to reach Server-1 using SSH. What is the correct command to ping Server-1 from Access-2 to test reachability?

- A. Access-2# ping6 172.16.1.97 vrf mgm
- B. Access-2# ping 172.16.1.97
- C. Access-2# ping 172.16.1.97 vrf default
- D. Access-2# ping 172.16.1.97 vrf mgmt

Answer: D

NEW QUESTION 36

Refer to the exhibit.



The command show LLDP neighbor-info gets typed into Access-1. All switches are Aruba OS-CX switches. What is the output of this command?

- A.
- | LOCAL-PORT | CHASSIS-ID | PORT-ID | PORT-DESC | TTL | SYS-NAME |
|------------|-------------------|---------|-----------|-----|----------|
| 1/1/1 | 90:20:c2:bc:ed:00 | 1/1/2 | 1/1/2 | 120 | Access-2 |
| 1/1/5 | 90:20:c2:bc:ef:00 | 1/1/2 | 1/1/2 | 120 | Access-3 |
- B.
- | LOCAL-PORT | CHASSIS-ID | PORT-ID | PORT-DESC | TTL | SYS-NAME |
|------------|-------------------|---------|-----------|-----|----------|
| 1/1/1 | 90:20:c2:bc:ed:00 | 1/1/2 | 1/1/2 | 120 | Access-2 |
- C.
- | LOCAL-PORT | CHASSIS-ID | PORT-ID | PORT-DESC | TTL | SYS-NAME |
|------------|-------------------|---------|-----------|-----|----------|
| 1/1/2 | 90:20:c2:bc:ed:00 | 1/1/1 | 1/1/1 | 120 | Access-2 |
| 1/1/2 | 90:20:c2:bc:ef:00 | 1/1/5 | 1/1/5 | 120 | Access-3 |
- D.
- | LOCAL-PORT | CHASSIS-ID | PORT-ID | PORT-DESC | TTL | SYS-NAME |
|------------|-------------------|---------|-----------|-----|----------|
| 1/1/2 | 90:20:c2:bc:ed:00 | 1/1/1 | 1/1/1 | 120 | Access-2 |

- A. Option A
- B. Option B
- C. Option C
- D. Option D

Answer: D

NEW QUESTION 39

Which switch supports a maximum of 8 line-cards, 3 fabric modules, and 2 management cards?

- A. Aruba 8400
- B. Aruba 8408
- C. Aruba 6410
- D. Aruba 5412r

Answer: A

NEW QUESTION 44

What are two available options as part of a DHCP offer message? (Choose two.)

- A. SSID
- B. DNS server IP
- C. Subnet Mask
- D. LLDP-MED
- E. VLANID

Answer: BC

NEW QUESTION 47

With what other technology does Half Duplex communication closely match?

- A. a pair of fiber optic strands allowing transmit on one and receive on the other at the same time
- B. a mobile phone call
- C. point-to-point connections between two switches allowing concurrent transmit and receive
- D. CB radio using push-to-talk

Answer: D

NEW QUESTION 51

What are the commands to disable SSH and HTTPS services from the default VRF?

- A. Core-1(config)# no ssh server Core-1(config)# no https-server
- B. Core-1# no ssh server vrf default Core-1# no https-server vrf default
- C. Core-1(config)# no ssh server enable Core-1(config)# no https-server enable
- D. Core-1(config)# no ssh server vrf default Core-1(config)# no https-server vrf default

Answer: D

NEW QUESTION 54

Core(config)# user admin password

Core(config)# interface mgmt

Core(config-if-mgmt)# ip static 10.254.16.89/22

Core(config-if-mgmt)# default-gateway 10.254.19.129

Core(config)# ssh server vrf mgmt

Core(config)# https-server vrf mgmt

You are tasked with configuring the Core switch to be managed by NetEdit. Currently, the Core switch is at factory-default settings.

Which two steps are missing? (Choose two.)

- A. Core(config)# https-server rest access-mode read-write
- B. Core(config-if-mgmt)# no shutdown
- C. Core(config-if-mgmt)# no tftp-server
- D. Core(config-if-mgmt)# enable
- E. Core(config)# https-server rest access-mode read-only

Answer: AB

NEW QUESTION 55

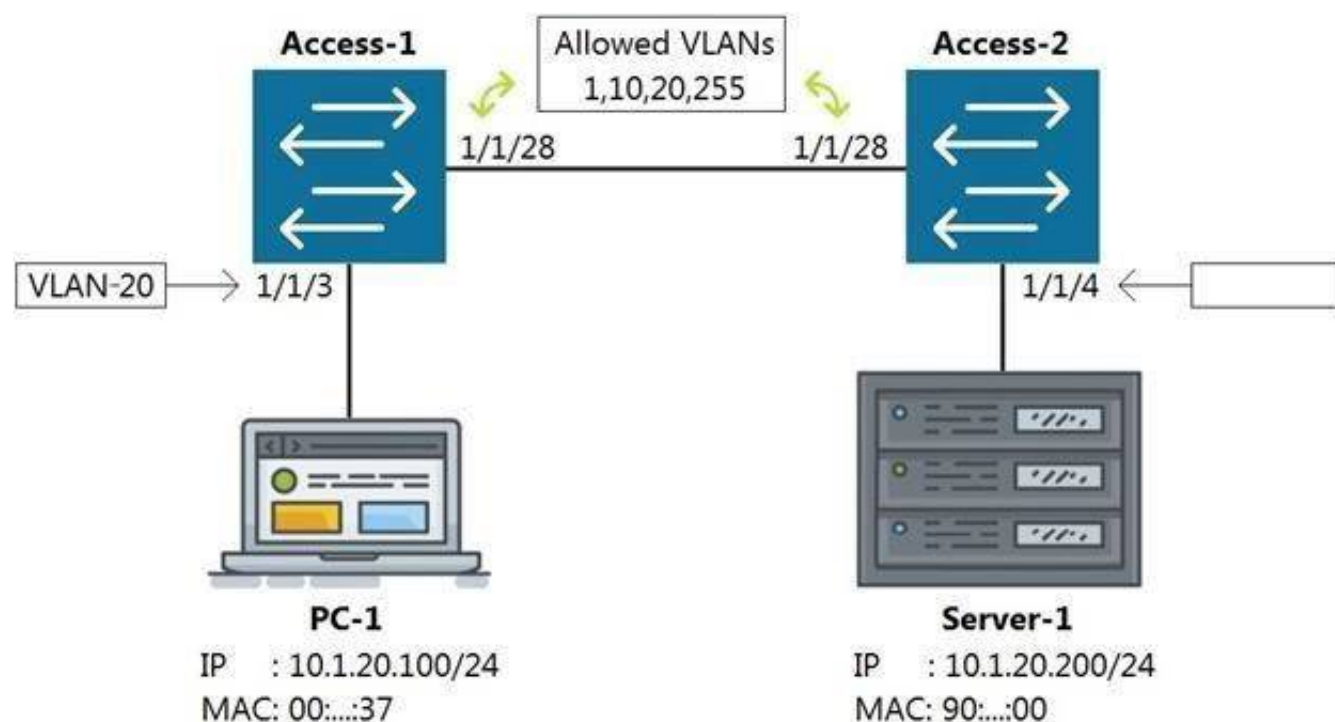
Your customer has 349 users in a two-story building. What are two benefits of a 2-Tier design? (Choose two.)

- A. Layer 2 and Layer 3 protocols run close to the endpoints to better implement ACL and QoS policy at the edge.
- B. Improved performance by offloading processing from the Access layer to the Core.
- C. Use of layer 2 switches at the access layer can process and route traffic from attached APs.
- D. Support for WAN/MPLS, Internet, and Data Center directly on the Collapsed core.
- E. Provides a more cost effective solution given that no additional switches are required for a third tier.

Answer: AE

NEW QUESTION 60

Refer to the exhibit



Which command on Access-2 port 1/1/4 will enable connectivity between PC-1 and Server-1 without any routing enabled in the network?

- A. Access-2 (config-if-1/1/4)# vlan access 1, 10, 20, 255
- B. Access-2 (config-if-1/1/4)# vlan access 20
- C. Access-2 (config-if-1/1/4)# vlan 20 untag 1/1/4
- D. Access-2 (config-if-1/1/4)# vlan trunk allow 1, 10, 255

Answer: B

NEW QUESTION 65

What command displays information regarding the secondary image installed on an AOS-CX switch?

- A. show secondary
- B. show version detail
- C. show version
- D. show images

Answer: D

NEW QUESTION 67

What is the Link Layer Discovery Protocol?

- A. a discovery protocol used between Layer 3 devices to determine routes within a single autonomous system
- B. a standardized IPv6 neighbor discovery protocol used to replace the ARP and broadcast mechanism used in IPv4
- C. a standardized protocol for communicating directly-connected device information and capabilities.
- D. an Aruba proprietary discovery protocol supported in all Aruba switches along with Cisco Discovery Protocol or CDP

Answer: C

NEW QUESTION 70

What are two features in a 2-Tier design that are implemented at the Access layer? (Choose two.)

- A. VPN access
- B. WAN/MPLS connectivity
- C. Endpoint Access
- D. Deep packet inspection
- E. Power over Ethernet

Answer: CE

NEW QUESTION 71

The following command is issued: Switch# checkpoint rollback start What is the result?

- A. The command will fail because rollback commands must be issued from global-config mode.
- B. The switch will revert the running-configuration to the checkpoint called 'start1 without a reboot.
- C. The command will fail because it is incomplete.
- D. The switch will use the checkpoint 'rollback1 as the starting configuration on next reboot.

Answer: B

NEW QUESTION 75

What are two mechanisms supported on AOS-CX 6300 switches used in Multi-active Detection to determine the status of the Primary member? (Choose two.)

- A. Management interface split detection
- B. Peer switch-based detection
- C. Loopback keepalives
- D. ARP-based

E. BFD

Answer: AD

NEW QUESTION 76

Aruba Access Points tunnel traffic in a campus to the Mobility Controller using which protocol?

- A. Control and Provisioning of Wireless Access Points (CAPWAP)
- B. Generic Routing Encapsulation (GRE)
- C. Lightweight Access Point Protocol (LWAPP)
- D. Process Application Programming Interface (PAPI)

Answer: B

NEW QUESTION 79

Which statement is correct regarding powering an Aruba Access Point?

- A. PoE or PoE+ is only used with Ethernet that is carried over multi-mode fiber cabling.
- B. Using switchports for this reason is unnecessary, because Aruba Access Points typically use an AC to DC power adapter to draw power.
- C. PoE or PoE+ enabled switchports are rarely used given concerns about causing electrical interference, with the data also carried over Ethernet cabling.
- D. Most administrators use PoE or PoE+ enabled switchports to provide both Ethernet connectivity and power to the AP.

Answer: D

NEW QUESTION 80

Refer to the exhibit.

Switch-1(config)# show spanning-tree exclude Disabled					
← ---- output omitted ---- →					
Port	Role	State	Cost	Priority	Type
1/1/1	Designated	Forwarding	4000	128	point_to_point
Lag1		Forwarding	2000	64	point_to_point
1/1/2	Designated	Forwarding	10000	128	point_to_point
1/1/3	Designated	Forwarding	20000	128	point_to_point

Switch-1 is not the root bridge. The ports shown are all the connected pointtopoint interfaces. What Role (hidden by the blue rectangle) will be assigned to the Lag 1 interface?

- A. Alternate
- B. Backup
- C. Root
- D. Designated

Answer: C

NEW QUESTION 85

Refer to the exhibit.



The Aruba 8400 in the exhibit is member 2 of a VSX stack.

Which command will enter the interface sub configuration mode for the port, indicated by the orange square?

- A. 8400(config)# interface 2/4/15
- B. 8400(config)# interface 1/7/16
- C. 8400(config)# interface 1/4/15
- D. 8400(config)# interface 2/3/17

Answer: A

NEW QUESTION 88

Which two commands will save the running-config so that changes will be loaded automatically on the next reboot? (Choose two.)

- A. write memory
- B. save
- C. copy config config1 config startup-config
- D. copy running-config startup-config
- E. copy running-config checkpoint boot-config

Answer: AD

NEW QUESTION 92

Core# configure terminal Core(config)# vrf Green Core(config-vrf)# exit Core(config)#

Core(config)# interface vlan 50 Core(config-if-vlan)# ?

Given the configuration on the CORE switch shown above, what command would follow to assign the switched virtual interface (SVI) vlan 50 to the VRF created?

- A. Core(config-if-vlan)# vrf attach Green
- B. Core(config-if-vlan)# ip vpn-instance Green
- C. Core(config-if-vlan)# ip vrf forwarding Green
- D. Core(config-if-vlan)# routing-context Green vrf

Answer: A

NEW QUESTION 93

ServiceOS login: admin SVOS> password

Enter password: ***** Confirm password: *****

The login password to access an Aruba AOS-CX was lost. After connecting to the switch console port, a reboot is performed and the Service OS console is accessed as shown above.

What is the default password that is required for the admin account while under the Service OS console?

- A. No password is set for this account.
- B. "password"
- C. "forgetme!"
- D. The same login password that has lost originally.

Answer: C

NEW QUESTION 96

Which two options are the Layer 2 protocols? (Choose two.)

- A. 802.1Q
- B. IPSec

- C. STP
- D. RIP
- E. 802.11af

Answer: AC

NEW QUESTION 98

What is Deep Packet Inspection?

- A. a machine learning method of packet inspection for the purpose of choosing which dynamic routing protocol to automatically assign
- B. a concept that applies to firewalls, when examining packets only up through Layer 4
- C. a function of Policy Based Routing that examines the entire IPv4 header to forward traffic based on factors other than destination address
- D. a firewall process of examining the packet header all the way to Layer 7 in order to determine if the packet should be permitted or denied

Answer: D

NEW QUESTION 102

Refer to the exhibit.

```
T11-Access-2# show lldp configuration
```

```
LLDP Global Configuration
```

```
=====
```

```
LLDP Enabled           : Yes
LLDP Transmit Interval : 30
LLDP Hold Time Multiplier : 4
LLDP Transmit Delay Interval : 2
LLDP Reinit Time Interval : 2
```

```
TLVs Advertised
```

```
=====
```

```
Management Address
```

```
Port Description
```

```
Port VLAN-ID
```

```
System Capabilities
```

```
System Description
```

```
System Name
```

```
OUI
```

```
LLDP Port Configuration
```

```
=====
```

PORT	TX-ENABLED	RX-ENABLED
1/1/1	Yes	Yes
1/1/2	Yes	Yes
<--- output omitted --->		
1/1/27	Yes	Yes
1/1/28	Yes	Yes

What configuration is needed in order for "show LLDP configuration" to show this output?

- A. none; LLDP is enabled by default on Aruba switches
- B. configuring LLDP both globally and on the interfaces
- C. enabling LLDP on the interfaces only
- D. configuring LLDP globally only

Answer: A

NEW QUESTION 105

What are the benefits of a 3-Tier design over a 2-Tier? (Choose two.)

- A. Offloading processing from the Core without routing at the Access layer.
- B. Can use lower speed links between Core to Aggregation and Aggregation to Access given the use of an Aggregation layer.
- C. Lowering the cost of a deployment due to needing less switches overall.
- D. Better scalability in a campus with a large number of buildings.
- E. Gaining the flexibility to connect the Data-Center to any Access layer switch.

Answer: AD

NEW QUESTION 109

You have completed a successful VSF stack between two switches.

Without manually assigning a backup switch, what is the expected output when issuing a show vsf command?

A. T1-6300-A# show vsf
<omitted>
Mbr Mac Address type Status ID

1 88:3a:30:a3:e5:40 JL660A Commander
2 88:3a:30:a6:d9:80 JL660A Secondary

B. T1-6300-A# show vsf
<omitted>
Mbr Mac Address type Status ID

1 88:3a:30:a3:e5:40 JL660A Primary
2 88:3a:30:a6:d9:80 JL660A Secondary

C. T1-6300-A# show vsf
<omitted>
Mbr Mac Address type Status ID

1 88:3a:30:a3:e5:40 JL660A Master
2 88:3a:30:a6:d9:80 JL660A Member

D. T1-6300-A# show vsf
<omitted>
Mbr Mac Address type Status ID

1 88:3a:30:a3:e5:40 JL660A Master
2 88:3a:30:a6:d9:80 JL660A Standby

- A. Option A
- B. Option B
- C. Option C
- D. Option D

Answer: D

NEW QUESTION 113

.....

THANKS FOR TRYING THE DEMO OF OUR PRODUCT

Visit Our Site to Purchase the Full Set of Actual HPE6-A72 Exam Questions With Answers.

We Also Provide Practice Exam Software That Simulates Real Exam Environment And Has Many Self-Assessment Features. Order the HPE6-A72 Product From:

<https://www.2passeasy.com/dumps/HPE6-A72/>

Money Back Guarantee

HPE6-A72 Practice Exam Features:

- * HPE6-A72 Questions and Answers Updated Frequently
- * HPE6-A72 Practice Questions Verified by Expert Senior Certified Staff
- * HPE6-A72 Most Realistic Questions that Guarantee you a Pass on Your FirstTry
- * HPE6-A72 Practice Test Questions in Multiple Choice Formats and Updatesfor 1 Year