

## Exam Questions PL-900

Microsoft Power Platform Fundamentals

<https://www.2passeasy.com/dumps/PL-900/>



### NEW QUESTION 1

- (Exam Topic 1)

You need to implement Microsoft Business Applications along with the Microsoft Power platform. Which three Microsoft products are part of the Power platform? Each correct answer presents a complete solution.

NOTE: Each correct selection is worth one point.

- A. Microsoft Power Apps
- B. Azure Active Directory
- C. Microsoft Flow
- D. Azure Machine Learning
- E. Microsoft Power BI

**Answer:** ACE

#### Explanation:

The Power Platform uses PowerApps, Power BI, and Power Automate (previously named Flow) to customize, extend, and build all the apps you need for your business and unlock the potential of Office 365 and Dynamics 365.

Reference:

<https://docs.microsoft.com/en-us/learn/powerplatform/>

### NEW QUESTION 2

- (Exam Topic 1)

A company uses Dynamics 365 Sales. The company uses a browser-based app named Sales Hub. You need ensure that users can access data from mobile devices.

Which app should users install?

- A. Dynamics 365 Remote Assist
- B. Dynamics 365 Finance
- C. Dynamics 365 Business Central
- D. Dynamics 365 for Phones

**Answer:** D

#### Explanation:

Use the Dynamics 365 for phones and Dynamics 365 for tablets apps for your sales, customer service, field service, and other tasks when you're on the go. With one download from your app store, you'll automatically have access to all the apps you need for your role. You will see apps with the new Unified Interface on your mobile device.

Reference:

<https://docs.microsoft.com/en-us/dynamics365/mobile-app/dynamics-365-phones-tablets-users-guide>

### NEW QUESTION 3

- (Exam Topic 1)

A company uses Power Platform.

You must ensure that users cannot share customer data with other users. You must also ensure that users cannot connect to data sources unless you grant the user explicit permissions to access a data source.

You need to recommend solutions to meet the company's security requirements.

Which two types of policies should you recommend? Each correct answer presents part of the solution.

NOTE: Each correct selection is worth one point.

- A. Office cloud policies
- B. Group Policy Objects
- C. environment-level policies
- D. tenant-level policies
- E. preset security policies

**Answer:** CD

#### Explanation:

Reference:

<https://docs.microsoft.com/en-us/power-platform/admin/wp-data-loss-prevention> <https://docs.microsoft.com/en-us/power-platform/admin/create-dlp-policy>

### NEW QUESTION 4

- (Exam Topic 1)

A large retail company implements Power Apps, Microsoft Flow, and the Common Data Service.

The board of directors is asking whether users are finding value in the technology. The company would like to measure and report usage of the software.

You need to recommend a tool to determine software usage. What should you recommend?

- A. Microsoft Intune
- B. Azure Stream Analytics
- C. Power Platform Analytics
- D. Dynamics 365 Product Insights

**Answer:** C

#### Explanation:

The Power Platform Analytics Usage report is the default reports seen by the logged in environment admin. It provides total app launches and daily active users across all apps in the environment. Admins can filter the view with attributes like device platform, player version, country, state, and city.

Reference:

<https://docs.microsoft.com/en-us/power-platform/admin/analytics-powerapps>

NEW QUESTION 5

- (Exam Topic 1)

A rapidly growing company wants to empower users to build apps, automate business processes, and analyze data without requiring I expertise or development skills and without increasing IT expenses and dependencies.

You need to recommend tools so that users can accomplish specific tasks.

Which tools should you recommend? To answer, select the appropriate options in the answer area. NOTE: Each correct selection is worth one point.

Scenario	Application
Build automatic workflows that access multiple data sources.	<div>AI Builder</div> <div>Power Apps</div> <div>Microsoft Flow</div> <div>Azure Functions</div> <div>Power BI</div>
Create custom apps that address specific business needs.	<div>AI Builder</div> <div>Power Apps</div> <div>Microsoft Flow</div> <div>Azure Functions</div> <div>Power BI</div>
Design insightful data visualizations.	<div>AI Builder</div> <div>Power Apps</div> <div>Microsoft Flow</div> <div>Azure Functions</div> <div>Power BI</div>

- A. Mastered
- B. Not Mastered

Answer: A

Explanation:

Box 1: Microsoft Flow

Microsoft Flow, now called Power Automate, is cloud-based software that allows employees to create and automate workflows and tasks across multiple applications and services without help from developers.

Box 2: Power Apps

PowerApps is a suite of apps, services, connectors and data platform that provides a rapid application development environment to build custom apps for your business needs.

Box 3: Power BI

Power BI is a business analytics solution that lets youvisualizeyour data and share insights across your organization, or embed them in your app or website. Connect to hundreds of data sources and bring your data to life with live dashboards and reports.

Reference:

<https://docs.microsoft.com/en-us/powerapps/powerapps-overview>

NEW QUESTION 6

- (Exam Topic 1)

A travel company plans to use the Power Platform to create tools that help travel agents book customer travel. You need to recommend solutions for the company. What should you recommend? To answer, drag the appropriate tools to the correct requirements. Each tool may be used once, more than once, or not at all. You may need to drag the split bar between panes or scroll to view content.

NOTE: Each correct selection is worth one point.

Tools	Requirement	Tool
Business rule	If a customer is travelling with a person under the age of 18, a field must display to collect date of birth for the under 18 traveler only.	Tool
Business process flow	Ensure that all travel agents use the same process with all customers.	Tool
Power Automate	Send a confirmation email to customers after reservations are complete.	Tool
Power BI		

- A. Mastered

B. Not Mastered

**Answer:** A

**Explanation:**

Reference:

<https://docs.microsoft.com/en-us/power-automate/getting-started>

<https://docs.microsoft.com/en-us/powerapps/maker/common-data-service/data-platform-create-business-rule#:~:>

**NEW QUESTION 7**

- (Exam Topic 1)

You are a customer service manager.

You need to implement a Power Apps portal that allows customers to submit cases. Which type of data source is used?

- A. Dynamics 365 Connector
- B. Microsoft SharePoint
- C. Microsoft Azure Storage
- D. Common Data Service

**Answer:** B

**Explanation:**

SharePoint can be set up to setup customer feedback.

Note: The PowerApp uses Finance and Operations connector to grab sales order information and SharePoint connector to connect and write the data to SharePoint list.

Reference:

<https://powerapps.microsoft.com/en-us/blog/scenario-2-collect-customer-feedback-in-sharepoint-after-order-delivery/>

**NEW QUESTION 8**

- (Exam Topic 2)

A company uses Microsoft 365 and Dynamics 365 Sales. The company does not have any developers on its staff.

You need to explain to the executives the benefits of using Power Platform apps. What are two benefits? Each correct answer presents a complete solution.

NOTE: Each correct selection is worth one point.

- A. Users can send emails from Dynamics 365 Sales to their personal email addresses.
- B. Users can create Power Apps to create apps for different departments.
- C. Users can use Power Automate to share information between Microsoft 365 and Dynamics 365 Sales.
- D. The company must unify all the mobile devices to one vendor.

**Answer:** BC

**NEW QUESTION 9**

- (Exam Topic 2)

A company needs to create several workflows and applications to help streamline their sales operations. You need to determine which applications are appropriate for given scenarios.

Which applications should you use? To answer, select the appropriate options in the answer area. NOTE: Each correct selection is worth one point.

Scenario	Application
Create no-code workflows that use different systems.	<div><div></div><div>Azure Logic Apps</div><div>Power Apps</div><div>Power Automate</div><div>Dynamics 365 workflows</div></div>
Build a no-code mobile application.	<div><div></div><div>Azure Logic Apps</div><div>Power Apps</div><div>Power Automate</div><div>Dynamics 365 workflows</div></div>
Administer your workflow in Microsoft Azure.	<div><div></div><div>Azure Logic Apps</div><div>Power Apps</div><div>Power Automate</div><div>Dynamics 365 workflows</div></div>
Build a mobile application by using Common Data Service.	<div><div></div><div>Azure Logic Apps</div><div>Power Apps</div><div>Power Automate</div><div>Dynamics 365 workflows</div></div>

- A. Mastered
- B. Not Mastered

**Answer:** A

Explanation:

Reference:

<https://docs.microsoft.com/en-us/power-automate/getting-started> <https://docs.microsoft.com/en-us/azure/logic-apps/logic-apps-overview>  
<https://powerapps.microsoft.com/pl-pl/blog/business-model-may/>

NEW QUESTION 10

- (Exam Topic 2)

A bank uses Power Platform apps and flows to support business processes.

The company would like to use historical client data to predict whether a client's loan application is likely to be approved or rejected.

You need to use AI Builder to implement the solution.

Which four actions should you perform in sequence? To answer, move the appropriate actions from the list of actions to the answer area and arrange them in the correct order.

Actions

Publish the model.

Export data into AI Builder.

Train the model.

Import data into Common Data Service.

Use the model in PowerApps or Microsoft Flow.

Answer area

- A. Mastered
- B. Not Mastered

Answer: A

Explanation:

Step 1: Import data into Common Data Service.

AI Builder requires the use of Common Data Service, which is the data platform for PowerApps and allows you to store and manage business data. Common Data Service is the platform on which Dynamics 365 apps are built so if you're a Dynamics 365 customer, your data is already in Common Data Service.

Step 2: Train the model Step 3: Publish the model

The last step is to publish your model.

Step 4: Use the model in PowerApps or Microsoft Flow. Reference:

<https://docs.microsoft.com/en-us/ai-builder/build-model>

NEW QUESTION 10

- (Exam Topic 2)

You are planning to use the Business Card Reader and Sentiment Analysis prebuilt AI models to build solutions.

For each of the following statements, select Yes if the statement is true. Otherwise, select No.

NOTE: Each correct selection is worth one point.

Statement	Yes	No
The Business Card Reader model can be used with both Power Automate and Power Apps.	<input type="radio"/>	<input type="radio"/>
The Sentiment Analysis model can be used Power Automate only.	<input type="radio"/>	<input type="radio"/>

- A. Mastered
- B. Not Mastered

Answer: A

Explanation:

Graphical user interface, text Description automatically generated

Reference:

<https://docs.microsoft.com/en-us/ai-builder/business-card-reader-component-model-driven> <https://docs.microsoft.com/en-us/ai-builder/flow-business-card-reader>

<https://docs.microsoft.com/en-us/ai-builder/flow-sentiment-analysis>

NEW QUESTION 11

- (Exam Topic 2)

You are creating a model-driven Power Apps app. You want to ensure that the app can be used by individuals who have vision impairments.

For each of the following statements, select Yes if the statement is true. Otherwise, select No. NOTE: Each correct selection is worth one point.

Statement	Yes	No
Power Apps apps can be built with hot key support and designed so they do not require a touch screen or mouse.	<input type="radio"/>	<input type="radio"/>
Only model-driven Power Apps have support for using a screen reader without the need for a connector.	<input type="radio"/>	<input type="radio"/>
The accessibility checker can be run for your Power Apps app to provide notifications of accessibility violations as well as tips for making it even more user friendly.	<input type="radio"/>	<input type="radio"/>

- A. Mastered  
 B. Not Mastered

**Answer:** A

**Explanation:**

Box 1: Yes

You can use keyboard shortcuts in PowerApps. Keyboard shortcuts give you an alternate way to do common tasks instead of using your mouse or tapping with your finger. They help in seamless navigation of the interface.

Box 2: No

The following software combinations are the supported recommendations for consuming PowerApps with a screen reader:

Windows: Microsoft Edge / Narrator macOS: Safari / VoiceOver Android: PowerApps app / Talkback iOS: PowerApps app / VoiceOver

Box 3: Yes

Users who have vision, hearing, or other impairments can use your canvas app more easily and successfully if you consider accessibility as you design how the app looks and behaves. If you're not sure how to make your app more accessible, you can run the Accessibility checker in PowerApps Studio. This tool not only finds potential accessibility issues but also explains why each might be a potential problem for users who have a specific disability and offers suggestions on how to resolve each issue. The Accessibility checker detects screen-reader and keyboard issues for you, and you can find information about how to fix color-contrast issues by using accessible colors.

Reference:

<https://docs.microsoft.com/en-us/powerapps/user/keyboard-shortcuts> <https://docs.microsoft.com/en-us/powerapps/user/screen-reader>

<https://docs.microsoft.com/en-us/powerapps/maker/canvas-apps/accessibility-checker>

**NEW QUESTION 16**

- (Exam Topic 2)

Your company wants to create a help desk system and implement Dynamics 365 Customer Service. The company has the following requirements:

- Provide an application to allow support team staff to chat live with a customer.
- Automatically import data from a Microsoft Excel spreadsheet once a day.
- Provide a chatbot that can assist customers who need support.

You need to determine which applications to use to meet the requirements.

Which applications should you use? To answer, select the appropriate options in the answer area. NOTE: Each correct selection is worth one point.

Requirement	Application
Automatically import data from a Microsoft Excel spreadsheet once a day.	<input type="text" value="Custom Connector"/> <input type="text" value="Azure Data Lake"/> <input type="text" value="Power Automate"/> <input type="text" value="Power BI"/>
Provide a chatbot that can assist customers who need support.	<input type="text" value="Power Virtual Agent"/> <input type="text" value="Power Automate"/>

- A. Mastered  
 B. Not Mastered

**Answer:** A

**Explanation:**

Graphical user interface, text, application, chat or text message Description automatically generated

Reference:

<https://docs.microsoft.com/en-us/power-virtual-agents/fundamentals-what-is-power-virtual-agents>

A 10-step Guide to Excel Automation using Power Automate Desktop | by Utkarsh Shahdeo | Medium

**NEW QUESTION 21**

- (Exam Topic 2)  
A company is evaluating ways that they can implement AI Builder.  
For which two scenarios can you use AI Builder? Each correct selection presents a complete solution. NOTE: Each correct selection is worth one point.

A. Send emails to all ai users who subscribe to a service.  
B. Synchronize data from an external database.  
C. Collect data from several data sources and display a dashboard that shows trending data.  
D. Interpret images and perform an action on the image.

Answer: BD

Explanation:  
Reference:  
https://powerapps.microsoft.com/en-us/blog/introducing-ai-builder-for-powerplatform/

NEW QUESTION 23

- (Exam Topic 3)  
A company plans to display support call metrics on a screen that is visible to all call center staff.  
You need to recommend solutions to meet the company's requirements.  
What should you recommend? To answer, drag the appropriate components to the correct requirements. Each component may be used once, more than once, or not at all. You may need to drag the split bar between panes or scroll to view content.  
NOTE: Each correct selection is worth one point.

Components

Tile

Theme

Template App

Alert

Treemap

DirectQuery

Page

Workspace

Answer Area

Requirement	Component
Display a chart with incoming calls versus wait time and pin the chart to a dashboard.	<div>Component</div>
Send a specific user a notification when the number of customer support calls waiting is over 20.	<div>Component</div>
Display metrics from different datasets that have related data.	<div>Component</div>

- A. Mastered  
B. Not Mastered

Answer: A

Explanation:  
Reference:  
https://docs.microsoft.com/en-us/power-bi/create-reports/service-dashboard-tiles https://docs.microsoft.com/en-us/power-bi/create-reports/service-set-data-alerts  
https://docs.microsoft.com/en-us/power-bi/visuals/power-bi-visualization-treemaps

NEW QUESTION 25

- (Exam Topic 3)  
What is a benefit of deploying Microsoft 365 and Dynamics 365 apps in the same tenant?

A. You do not need to manually back up data.  
B. Both will use the same time zone.  
C. You can use Power BI to display data that comes from both environments.  
D. You can implement Single Sign-On (SSO).

Answer: C

Explanation:  
Reference:  
https://docs.microsoft.com/en-us/power-platform/admin/use-power-bi

NEW QUESTION 30

- (Exam Topic 3)  
You are a district manager for a large retail company. You want to provide sales managers with deeper sales insights to ensure that they can make more informed decisions for their stores.  
Store managers must be able to view data in near real-time.  
You need to create and share a Power BI dashboard that can be used by the store managers.  
Which tools can you use? To answer, drag the appropriate reporting types to the correct requirements. Each reporting type may be used once, more than once, or not at all. You may need to drag the split bar between panes or scroll to view content.

Reporting Types

Power BI Desktop only

Power BI Service only

Power BI Desktop or Power BI Service

Answer Area

Requirement	Reporting type
Create Power BI dashboards that contain a single store's sales information.	<div>Reporting type</div>
Share the dashboard with your retail managers.	<div>Reporting type</div>

- A. Mastered

B. Not Mastered

**Answer:** A

**Explanation:**

Reference:

<https://docs.microsoft.com/en-us/power-bi/fundamentals/desktop-getting-started>

### NEW QUESTION 35

- (Exam Topic 3)

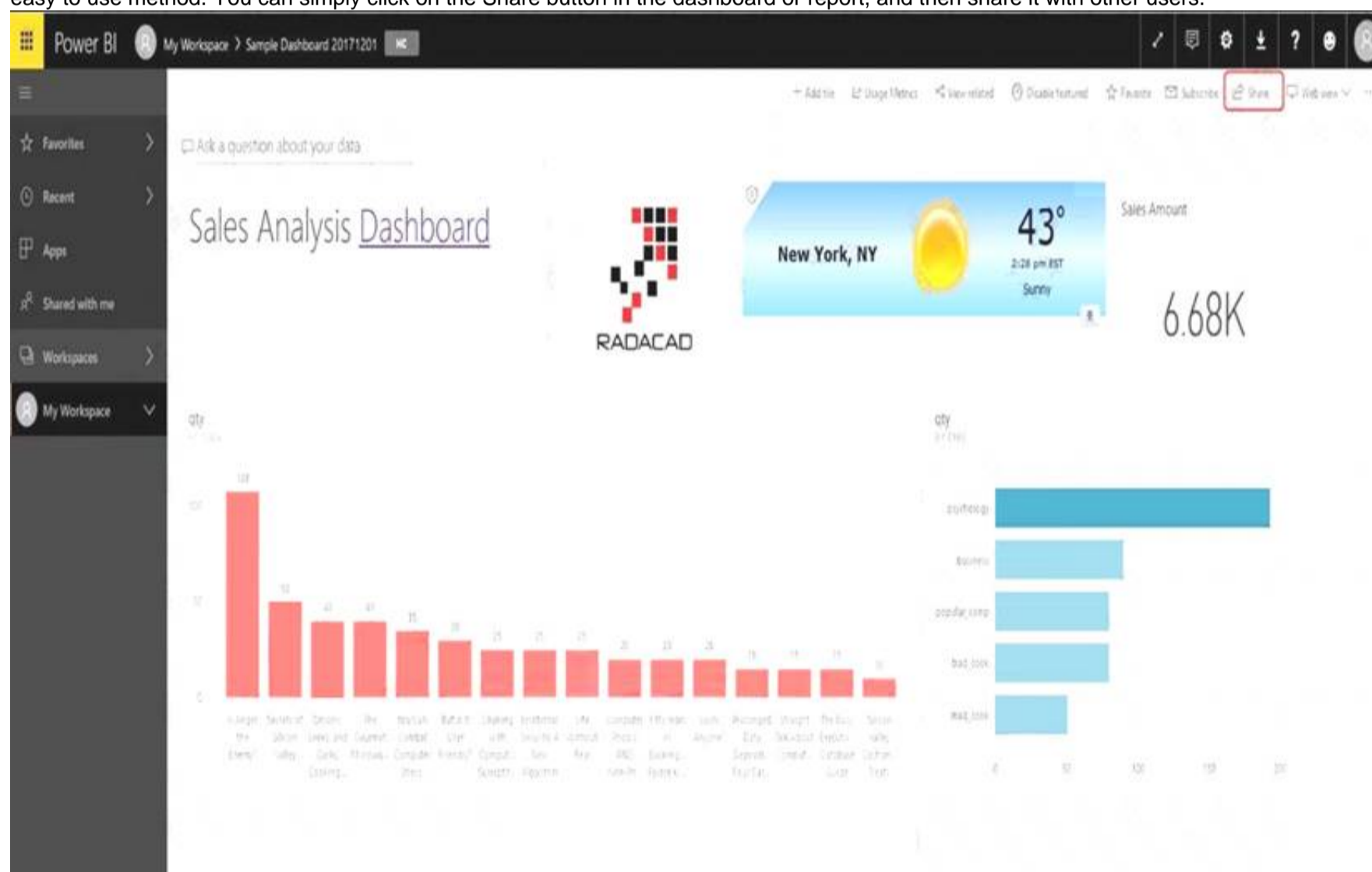
You create a Power BI dashboard that displays data from Dynamics 365 Customer Engagement. You need to share the Power BI dashboard with coworkers. What are three possible ways to achieve the goal? Each correct answer presents a complete solution. NOTE: Each correct selection is worth one point.

- A. Create a Power BI workspace and grant coworkers permissions.
- B. Publish the dashboard as an app to your coworkers.
- C. Export the data into Common Data Service for others to manipulate in Power BI.
- D. Export the data to Microsoft Excel for coworkers to import and view in Power BI.
- E. Embed reports in your company's internal web portal.

**Answer:** ABE

**Explanation:**

A: Basic Sharing for Dashboards and Reports through a workspace is the most common way of sharing the Power BI content. Basic Sharing is very simple and easy to use method. You can simply click on the Share button in the dashboard or report, and then share it with other users.



B: Apps are great sharing method for multiple environment, and best way of sharing for users in production environment.

Power BI App is the solution for multiple environment approach. With Power BI App, your development environment (workspace), and user environment (App) are isolated from each other.

Note: If you are using SharePoint online as a portal for document management and some other reasons already, then consider using Embed in SharePoint Online feature of Power BI reports. This method is secure and you can share the report only with Power BI users you want.

E: Sometimes, you don't need a secure way of sharing, you may search for an easy and free way of sharing, and your content is not confidential or sensitive.

Publish to web is your friend in such situation. This is the only free way of sharing in Power BI, but be aware that this method is not secure.

Publish to web method, gives you an embed code, which you can use in any web pages to embed the Power BI report in it

Reference:

<https://radacad.com/power-bi-sharing-methods-comparison-all-in-one-review>

### NEW QUESTION 39

- (Exam Topic 3)

You create reports within Power BI to report on the status of a project. A manager asks you to share the reports with other team members. You decide to create a published app and set permissions to allow other team members to view the reports.

For each of the following statements, select Yes if the statement is true. Otherwise, select No. NOTE: Each correct selection is worth one point.

Statement	Yes	No
The Power BI published app is stored within the Team site so that others can install it.	<input type="radio"/>	<input type="radio"/>
One of the other project managers installs and modifies a dashboard within the Power BI published app. The changes are automatically made into the original published app.	<input type="radio"/>	<input type="radio"/>

- A. Mastered
- B. Not Mastered

**Answer:** A

**Explanation:**

Reference:

<https://docs.microsoft.com/en-us/power-bi/collaborate-share/service-create-distribute-apps>

**NEW QUESTION 43**

- (Exam Topic 3)

You need to display sales orders greater than a specific threshold in a Power BI report. What should you use?

- A. Common Data Service
- B. connector
- C. Power Query
- D. filter

**Answer:** D

**NEW QUESTION 48**

- (Exam Topic 3)

You are using Dynamics 365 Sales.

You need to pull data into a Power BI report for your team. The City and State columns must be combined to form one column on the report.

Which function would you use? Each correct answer presents a complete solution. NOTE: Each correct selection is worth one point.

- A. Use Power Query to merge columns.
- B. Import the data.18912E1457D5D1DDCBD40AB3BF70D5D
- C. Export data to Microsoft Excel.
- D. Create a view.

**Answer:** A

**Explanation:**

Reference:

<https://docs.microsoft.com/en-us/power-bi/desktop-shape-and-combine-data>

**NEW QUESTION 51**

- (Exam Topic 3)

You are a sales representative. You create a Power BI report to visualize data from a Microsoft Excel workbook.

Users need to be able to view and share the report.

Which two actions should you perform? Each correct answer presents part of the solution. NOTE: Each correct selection is worth one point.

- A. Pin the report to a dashboard.
- B. Export the data.
- C. Publish the dashboard.
- D. Share the dashboard.

**Answer:** AD

**Explanation:**

Reference:

<https://docs.microsoft.com/en-us/power-bi/create-reports/service-dashboard-pin-live-tile-from-report> <https://docs.microsoft.com/en-us/power-bi/collaborate-share/service-share-dashboards#limitations-andconsidera>

**NEW QUESTION 55**

- (Exam Topic 3)

A manufacturing company uses Internet of Things (IoT) devices to monitor the temperature in different parts of their warehouse.

The current IoT monitoring software is extremely outdated and is not user friendly.

You need to view near-real time information from the IoT devices in Power BI Service dashboards. Which tool should you use?

- A. Scheduled refresh dataset

- B. Streaming dataset
- C. Content Pack dataset
- D. Power BI dataflows
- E. Quick Insights

Answer: B

Explanation:

<https://docs.microsoft.com/en-us/power-bi/service-real-time-streaming>  
<https://powerbi.microsoft.com/en-us/blog/using-power-bi-real-time-dashboards-to-display-iot-sensor-data-astep-by-step-tutorial/>

NEW QUESTION 57

- (Exam Topic 3)  
A company plans to create an information portal that managers can use to view critical information about their teams. You need to recommend the type of Power BI components that the company should use. What should you recommend? To answer, drag the appropriate components to the correct requirements. Each component may be used once, more than once, or not at all. You may need to drag the split bar between panes or scroll to view content.  
NOTE: Each correct selection is worth one point.

Component types

Dashboard

Report

Answer Area

Requirement	Component type
Display data from a Microsoft Excel workbook that has multiple worksheets into one chart.	Component type
Display the top departmental goal metrics and alert users when specific thresholds targets are met.	Component type
Display Sales charts that can be filtered by region.	Component type

- A. Mastered
- B. Not Mastered

Answer: A

Explanation:

Box 1: Report  
Reports are more detailed data displayed in many formats like chart, graphs list and in tabular, etc. Box 2: Dashboard  
Dashboards are a business key performance indicator view where it displays key values that can change business profits and can be glanced at one screen.  
Box 3: Report  
Power BI dashboards cannot slice and dice, but reports have many ways to filter and slice.  
Note: Power BI dashboards are one placeholder to display the most important decision-making facts to run a business. But reports are more detailed data displayed in many formats like chart, graphs list and in tabular, etc. Reports are based on one dataset or one business unit data for example reports of a store belonging to California.  
Reference:  
<https://www.educba.com/power-bi-dashboard-vs-report/>

NEW QUESTION 62

- (Exam Topic 4)  
You are creating a model-driven app to track requests for quotes. The app must use the following navigation structure:  
Sales  
    > Sales Log  
    > Request for Quotes  
    > Projects  
    > Settings  
    > Customers  
    > Product Lines  
    > Sales Territories  
Administration  
    > User Admin  
    > Users  
    > Roles  
You need to create the app navigation. Which sitemap component types should you use? To answer, drag the appropriate component types to the correct navigation elements. Each component type may be used once, more than once, or not at all. You may need to drag the split bar between panes or scroll to view content.  
NOTE: Each correct selection is worth one point.

Component types	Answer Area	
<div>Area</div>	<b>Navigation element</b>	<b>Component type</b>
<div>Group</div>	Administration	<div>Component type</div>
<div>Subarea</div>	Sales log	<div>Component type</div>
	Customers	<div>Component type</div>

- A. Mastered  
B. Not Mastered

**Answer:** A

**Explanation:**

Reference:

<https://docs.microsoft.com/en-us/dynamics365/customerengagement/on-premises/developer/customize-dev/chan>

**NEW QUESTION 66**

- (Exam Topic 4)

A user is trying to understand the differences between the various ways apps can be built by using Power Apps.

For each of the following statements, select Yes if the statement is true. Otherwise, select No. NOTE: Each correct selection is worth one point.

Statement	Yes	No
You can embed canvas apps in model-driven apps.	<div></div>	<div></div>
A Power Apps portal can use only one data source.	<div></div>	<div></div>
You must use Power BI to create reports in model-driven apps.	<div></div>	<div></div>

- A. Mastered  
B. Not Mastered

**Answer:** A

**Explanation:**

Box 1: Yes

You can create a canvas app and then embed that within a model driven app.

Box 2: No

With the capability to build a portal in PowerApps, you can create a website for external and internal users enabling them to interact with data stored in Common Data Service.

Note: Common Data Service lets you securely store and manage data that's used by business applications. Data within Common Data Service is stored within a set of entities. An entity is a set of records used to store data, similar to how a table stores data within a database. Common Data Service includes a base set of standard entities that cover typical scenarios, but you can also create custom entities specific to your organization and populate them with data using Power Query. App makers can then use PowerApps to build rich applications using this data.

Box 3: Yes

To get started building a report you'll need the latest version of Power BI Desktop and a PowerApps environment with the latest version of the Common Data Service.

Reference:

<https://carlidesouza.com/how-to-embed-a-canvas-app-in-a-model-driven-app-in-powerapps/> <https://docs.microsoft.com/en-us/powerapps/maker/portals/create-portal> <https://docs.microsoft.com/en-us/powerapps/maker/common-data-service/data-platform-intro>

**NEW QUESTION 67**

- (Exam Topic 4)

You create a Power App portal.

When a user signs into the portal the following error displays: user not found You confirm that the user's sign in information is correct.

You need to determine the cause of the error. What should you do?

- A. Disable custom error messages.  
B. Create a custom error message.  
C. Enable diagnostic tools in Lifecycle Services.  
D. Enable Maintenance mode.

**Answer:** C

Explanation:

Reference:

<https://docs.microsoft.com/en-us/dynamics365/fin-ops-core/dev-itpro/lifecycle-services/monitoring-diagnostics> <https://docs.microsoft.com/en-us/dynamics365/fin-ops-core/dev-itpro/lifecycle-services/user-logins>

NEW QUESTION 70

- (Exam Topic 4)

You have a Microsoft Excel workbook that contains a list of tasks for a project. You store the file in OneDrive for Business. You need to create a canvas app that allows team members to update the status of their tasks. What should you use?

- A. the Generate an app from data feature
- B. a custom action in Common Data Service
- C. Power Apps Checker
- D. the Open entity data in Excel feature

Answer: A

Explanation:

Reference:

<https://docs.microsoft.com/en-us/powerapps/maker/canvas-apps/add-data-connection>

NEW QUESTION 72

- (Exam Topic 4)

A company plans to implement Power Apps in a Power Platform environment. You need to implement other required components. Match each option to its function. To answer, drag the appropriate option from the column on the left to its function on the right. Each option may be used once, more than once, or not at all.  
NOTE: Each correct match is worth one point.

Products

Microsoft Azure

custom connector

Microsoft Flow

model-driven app

canvas app

Answer Area

Function

Implement user authentication.

Send data to a Microsoft OneNote notebook in the same tenant.

Product

- A. Mastered
- B. Not Mastered

Answer: A

Explanation:

Reference:

<https://powerapps.microsoft.com/en-us/blog/implementing-role-based-permission/> <https://www.encorebusiness.com/blog/powerapps-flow-can/>

NEW QUESTION 74

- (Exam Topic 4)

A user is creating their first canvas app in Power Apps. The user does not know what types of controls they can include. You need to recommend solutions for the user. Which types of controls would you recommend using in Power Apps? To answer, select the appropriate control in the dialog box in the answer area.  
NOTE: Each correct selection is worth one point.

Scenario

View the date, time, and location of upcoming internal meetings.

Create a meeting request from within the app.

Drill down into customer contact records in Dynamics 365 Sales to view a photo of a customer you are meeting.

Control

Meeting-screen template

Gallery

List box

Meeting-screen template

Gallery

List box

Image

People-screen template

Add picture

- A. Mastered
- B. Not Mastered

Answer: A

Explanation:

Box 1: Gallery

A Gallery control can show multiple records from a data source, and each record can contain multiple types of data. For example, a Gallery control can show multiple contacts with each item showing contact information that includes a name, an address, and a phone number for each contact.

Box 2: Meeting-screen template

In a canvas app, add a meeting screen that lets users create and send meeting requests from their Office 365

Outlook accounts. Users can search for attendees in their org and add external email addresses. If your tenant has meeting rooms built into Outlook, users can select a location as well.

Box 3: Image

If you add one or more Image controls to your app, you can show individual images that aren't part of a data set, or you can incorporate images from records in data sources.

Reference:

<https://docs.microsoft.com/en-us/powerapps/maker/canvas-apps/screen-templates/meeting-screen-overview>

NEW QUESTION 78

- (Exam Topic 4)

A company is building a model-driven app.

You need to create and configure the objects needed for the app.

Which component categories should you use? To answer, drag the appropriate component categories to the correct objects. Each component category may be used once, more than once, or not at all. You may need to drag the split bar between panes or scroll to view content.

NOTE: Each correct selection is worth one point.

Component categories

UI

Data

Logic

Visulaization

Answer Area

Object

Relationship

Form

Business rule

View

Component category

- A. Mastered
- B. Not Mastered

Answer: A

Explanation:

Reference:

<https://docs.microsoft.com/en-us/powerapps/maker/model-driven-apps/model-driven-app-components>

NEW QUESTION 79

- (Exam Topic 4)

A company plans to build Power Apps portals.

For each of the following statements, select Yes if the statement is true. Otherwise, select No. NOTE: Each correct selection is worth one point.

Statement	Yes	No
You must use standard templates for building portals.	<input type="radio"/>	<input type="radio"/>
You can test portals in non-prodcution environments and then migrate the portals into production environments.	<input type="radio"/>	<input type="radio"/>
When transitioning to the new version of a portal, you can display a customizable maintenance page until the new portal is ready to be used.	<input type="radio"/>	<input type="radio"/>

- A. Mastered
- B. Not Mastered

Answer: A

**Explanation:**

Reference:

<https://docs.microsoft.com/en-us/powerapps/maker/portals/overview> <https://docs.microsoft.com/en-us/powerapps/maker/portals/admin/migrate-portal-configuration>  
<https://docs.microsoft.com/en-us/powerapps/maker/portals/admin/enable-maintenance-mode>

**NEW QUESTION 80**

- (Exam Topic 4)

A company plans to create canvas apps.

What is the minimum number of connectors required? To answer, drag the appropriate number of connectors to the correct drop scenarios. Each number of connectors may be used once, more than once, or not at all. You may need to drag the split bar between panes or scroll to view content.

NOTE: Each correct selection is worth one point.

Number of connectors	Answer Area	Number of connectors
0		
1	Synchronize data with three data sources that use different proprietary database formats.	
2	Create three Power Apps apps that each display data from a Microsoft SharePoint list.	
3	Create three Flows that each copy data to Microsoft Azure Data Lake on different schedules.	

- A. Mastered
- B. Not Mastered

**Answer:** A

**Explanation:**

Reference:

<https://docs.microsoft.com/en-us/powerapps/maker/canvas-apps/connections-list> <https://docs.microsoft.com/en-us/connectors/connectors>

**NEW QUESTION 81**

- (Exam Topic 5)

A company uses Dynamics 365 Supply Chain Management.

You need to use Microsoft Flow to automate the process of receiving and tracking raw materials. Which type of connector should you use?

- A. Common Data Service
- B. Dynamics 365
- C. Dynamics 365 for Fin & Ops
- D. Dynamic Signal

**Answer:** A

**Explanation:**

Dynamics 365 for Finance and Operations is now being licensed as Dynamics 365 Finance and Dynamics 365 Supply Chain Management. You can use Common Data Service to enable the flow of data between Finance and Operations apps and Dynamics 365 Sales.

Reference:

<https://docs.microsoft.com/en-us/dynamics365/fin-ops-core/dev-itpro/data-entities/data-integration-cds>

**NEW QUESTION 83**

- (Exam Topic 5)

A company uses Microsoft Flow.

Each time a work order is created, a service manager must review and approve the work order before a worker is dispatched.

You need to create a flow to enforce the process. What should you create?

- A. plug-in
- B. approval flow
- C. business rule
- D. team flow
- E. instant flow

**Answer:** B

**Explanation:**

With Power Automate, you can manage the approval of documents or processes across several services, including SharePoint, Dynamics 365, Salesforce, OneDrive for Business, Zendesk, or WordPress. Reference:

<https://docs.microsoft.com/en-us/power-automate/modern-approvals>

**NEW QUESTION 84**

- (Exam Topic 5)

A company plans to implement Power Apps.

For each of the following statements, select Yes if the statement is true. Otherwise, select No. NOTE: Each correct selection is worth one point.

### Answer Area

Statement	Yes	No
Building Power Apps apps requires proficiency in JavaScript programming.	<input type="radio"/>	<input type="radio"/>
You must select one of the app templates to create an app.	<input type="radio"/>	<input type="radio"/>

- A. Mastered
- B. Not Mastered

**Answer:** A

### Explanation:

Reference:  
<https://docs.microsoft.com/en-us/powerapps/maker/>

### NEW QUESTION 86

- (Exam Topic 5)

A company uses Dynamics 365 Supply Chain Management and Dynamics 365 Finance. User account data must be synchronized between the two system. You need to ensure that the synchronized data is stored in one place. What should you use?

- A. SQLServer
- B. Common Data Service
- C. Azure Active Directory
- D. Azure IoT Central

**Answer:** B

### Explanation:

Reference:  
<https://docs.microsoft.com/en-us/power-platform/admin/data-integrator>

### NEW QUESTION 88

- (Exam Topic 5)

For which scenarios can you use Power Automate?

For each of the following statements, select Yes if the statement is true. Otherwise, select No. NOTE: Each correct selection is worth one point.

Statement	Yes	No
Notify team members when a response is recorded in a form in Microsoft Forms.	<input type="radio"/>	<input type="radio"/>
When email is received, save email attachments to OneDrive for Business.	<input type="radio"/>	<input type="radio"/>
Receive notifications when negative comments about the company are posted on Twitter.	<input type="radio"/>	<input type="radio"/>

- A. Mastered
- B. Not Mastered

**Answer:** A

### Explanation:

Reference:  
<https://flow.microsoft.com/en-us/galleries/public/templates/b923bbd04bda11e78896d10a96d3fac3/notify-the-tea> <https://flow.microsoft.com/en-us/galleries/public/templates/65ceb79430ef4956a0855fbe09249cdf/save-office-36> <https://flow.microsoft.com/en-us/blog/get-notified-of-negative-posts/>

### NEW QUESTION 93

- (Exam Topic 5)

A company plans to create a workflow that periodically runs a Dynamics 365 action based on data in third-party cloud-based solutions. Which features should you use to create the workflow? To answer, select the appropriate options in the answer area.

NOTE: Each correct selection is worth one point.

Action	Component
Ensure that Power Automate can interact with the third-party application.	<div><div></div><div>Triggers</div><div>Logic Apps</div><div>Connectors</div><div>Gateways</div></div>
Periodically check for data changes in the third-party application.	<div><div></div><div>Actions</div><div>Triggers</div><div>Connectors</div><div>DirectQuery</div></div>

- A. Mastered  
B. Not Mastered

Answer: A

Explanation:

Graphical user interface, text, application Description automatically generated

NEW QUESTION 96

- (Exam Topic 5)

You are building a Power Automate flow to manage sales.

The sales team saves quotes as PDF files to a Microsoft OneDrive folder. You create a Microsoft SharePoint list to help the sales team manage follow ups to quotes. You need to copy the customer name, phone number, and the amount of the potential sale from the sales quote and insert the data into the SharePoint list. Which AI Builder model should you use?

- A. key phrase extraction  
B. sentiment analysis OC.  
C. text recognition  
D. language detection

Answer: C

Explanation:

Reference:

<https://docs.microsoft.com/en-us/ai-builder/prebuilt-text-recognition>

NEW QUESTION 101

- (Exam Topic 5)

A company provides on-site architectural consulting services to residential and business customers. The company wants to implement a simple alert system where a consultant can press a button on their mobile device to send the user's location to the company as a text notification.

You need to build a button flow that sends the notification.

In which order should you perform the actions? To answer, move all actions from the list of actions to the answer area and arrange them in the correct order.

Actions	Answer Area
Add a new step to the flow.	
Add a trigger.	
Select a connector and action to send text notifications.	
Set the actions properties.	
Save the flow.	

- A. Mastered  
B. Not Mastered

Answer: A

**Explanation:**

Reference:

<https://docs.microsoft.com/en-us/power-automate/button-flow-with-user-input-tokens#main>

**NEW QUESTION 103**

- (Exam Topic 5)

A project deadline is approaching. The project manager reports that there are still a number of critical tasks that are not complete.

You need to implement Power Automate to help streamline processes.

Which types of flows should you use? To answer, drag the appropriate flow types to the correct requirement. Each flow type may be used once, more than once, or not at all. You may need to drag the split bar between panes or scroll to view content.

NOTE: Each correct selection is worth one point.

Flow types	Answer Area	
	Requirement	Flow type
<div>automated</div>	Ensure that all of the steps for completing tasks are consistently followed by all team members.	<div></div>
<div>instant</div>	Allow users to send an email to the project lead whenever a task is completed.	<div></div>
<div>scheduled</div>	Automatically send a list of completed tasks at the end of each week.	<div></div>
<div>business process</div>		

A. Mastered

B. Not Mastered

Answer: A

**Explanation:**

Reference:

<https://docs.microsoft.com/en-us/power-automate/business-process-flows-overview> <https://docs.microsoft.com/en-us/power-automate/get-started-logic-flow>

<https://docs.microsoft.com/en-us/power-automate/run-scheduled-tasks>

**NEW QUESTION 104**

- (Exam Topic 5)

A business plans to including AI Builder. Which actions can you perform?

For each of the following statements, select Yes if the statement is true. Otherwise, select No.

NOTE: Each correct selection is worth one point.

Statement	Yes	No
You can use a text classification model in AI Builder to retrieve text and analyze its meaning.	<div></div>	<div></div>
You can tag Instagram posts that mention your new product.	<div></div>	<div></div>
You can send results about the number of mentions of your new product in Instagram to Power BI for inclusion on a dashboard.	<div></div>	<div></div>

A. Mastered

B. Not Mastered

Answer: A

**Explanation:**

Reference:

<https://docs.microsoft.com/en-us/ai-builder/text-classification-model-in-flow>

**NEW QUESTION 107**

- (Exam Topic 6)

You create a Power Virtual Agents chatbot for a company.

The management wants to learn about the effectiveness of the chatbot.

You need to identify the percentage of customers who stop responding to prompts from the chatbot. Which report should you view?

A. Customer satisfaction

- B. Engagement over time
- C. Escalation rate drivers
- D. Session outcomes overtime

Answer: B

Explanation:

Reference:  
<https://docs.microsoft.com/en-us/power-virtual-agents/teams/analytics-csat-teams>

NEW QUESTION 112

- (Exam Topic 6)

You are creating a Power Virtual Agents chatbot to help users search for available meeting rooms within a building. The chatbot must meet the following requirements:

- > Allow users to initiate the chatbot by typing the phrase Help me Meeting Guru.
- > Provide meeting room capacity options of 1-4 people and 5-10 people.
- > End the chatbot session if the user attempts to schedule a meeting room for more than 10 people. You need to identify the actions to use.

Which actions should you use? To answer, select the appropriate options in the answer area.

NOTE: Each correct selection is worth one point.

Requirement	Action
Allow users to initiate the chatbot by typing the phrase <b>Help me Meeting Guru</b> .	<div><div></div><div>Call a fallback topic.</div><div>Call an action.</div><div>Create a question node.</div><div>Create a trigger phrase.</div></div>
Provide meeting room capacity options of 1-4 people and 5-10 people.	<div><div></div><div>Call an action.</div><div>Call a fallback topic.</div><div>Create a condition.</div><div>Create a question node.</div></div>
End the chatbot session when the user attempts to schedule meeting room for more than 10 people.	<div><div></div><div>Add a condition.</div><div>Call an action.</div><div>Configure a fallback topic.</div><div>Create a trigger phrase.</div></div>

- A. Mastered
- B. Not Mastered

Answer: A

Explanation:

Graphical user interface, text, application, email Description automatically generated  
Reference:  
<https://docs.microsoft.com/en-us/power-virtual-agents/authoring-create-edit-topics>

NEW QUESTION 116

- (Exam Topic 6)

You create a Power Virtual Agents chatbot for use with Microsoft Teams. You are testing the chatbot. Testers report the following issues:

- > Changes that you make to the chatbot are not seen by testers.
- > When users enter the word refund the chatbot must ask the user the product for which they would like a refund. The chatbot does not ask the user for product information.

You need to determine what needs to be done to fix the issues.

What should you do? To answer, select the appropriate options in the answer area.

NOTE: Each correct selection is worth one point.

Missing changes

Create a new chatbot.

Publish the chatbot.

Save the topic.

Share the chatbot.

Refund responses are not working as expected.

Change security.

Create a refund topic.

Create a refund chatbot.

- A. Mastered
- B. Not Mastered

Answer: A

**Explanation:**  
Graphical user interface, text, application, chat or text message Description automatically generated  
Reference:  
<https://docs.microsoft.com/en-us/power-virtual-agents/publication-fundamentals-publish-channels>

NEW QUESTION 119

- (Exam Topic 6)  
You are developing a Power Virtual Agents chatbot for a company.  
For each of the following statements, select Yes if the statement is true. Otherwise, select No.  
NOTE: Each correct selection is worth one point.

Statement	Yes	No
You must create a topic to specify how a chatbot responds to a user.	<input type="radio"/>	<input type="radio"/>
You can use prebuilt entities or custom defined entities.	<input type="radio"/>	<input type="radio"/>

- A. Mastered
- B. Not Mastered

Answer: A

**Explanation:**  
Graphical user interface, text, application Description automatically generated  
Reference:  
<https://docs.microsoft.com/en-us/power-virtual-agents/authoring-fundamentals> <https://docs.microsoft.com/en-us/power-virtual-agents/advanced-entities-slot-filling>

NEW QUESTION 124

- (Exam Topic 6)  
You are creating a Power Virtual Agents chatbot for a company.  
Which component types should you use for each scenario? To answer, select the appropriate options in the answer area.  
NOTE: Each correct selection is worth one point.

Answer Area

Scenario	Component type
The chatbot needs to capture of the user id for authentication.	<div>Topic</div> <div>Entity</div> <div>Action</div>
A customer asks a question that needs to be handed off to a live Customer Support representative.	<div>Topic</div> <div>Entity</div> <div>Action</div>

- A. Mastered
- B. Not Mastered

Answer: A

Explanation:

Graphical user interface, application Description automatically generated

Reference:

https://docs.microsoft.com/en-us/power-virtual-agents/fundamentals-what-is-power-virtual-agents https://www.c-sharpcorner.com/article/get-started-with-bot-development-with-microsoft-power-virtual-agent-ste

NEW QUESTION 128

- (Exam Topic 6)

You create a Power Virtual Agents chatbot for a company. The chatbot will use common channels and services by which the company communicates with customers.

You need to determine which services the chatbot can be used with or added to.

Which two services can the chatbot be used with? Each correct answer presents a complete solution.

NOTE: Each correct selection is worth one point.

- A. Facebook
- B. Power BI
- C. Microsoft Azure Event Grid
- D. Microsoft Azure Service Bus
- E. Microsoft Azure Bot Framework

Answer: AE

NEW QUESTION 133

- (Exam Topic 6)

You are building a Power Virtual Agents chatbot for a company.

You are working with an existing topic and would like to call an action. Which technology is available to perform the action?

- A. Power Virtual Agent Entity
- B. Power Apps
- C. Power Automate
- D. Power BI

Answer: C

Explanation:

Reference:

https://docs.microsoft.com/en-us/power-virtual-agents/advanced-flow

NEW QUESTION 138

- (Exam Topic 7)

You create a Power BI dashboard.

Match each option to its requirement. To answer, drag the appropriate option from the column on the left to the correct requirement on the right. Each option may be used once, more than once, or not at all.

NOTE: Each correct match is worth one point.

Options

Share

Embed

Get Data

Pin

Answer Area

Requirement

Option

Ensure that coworkers can see the dashboard.

Option

Display data from Microsoft Excel in the dashboard.

Option

Add a report tile to the dashboard.

Option

- A. Mastered
- B. Not Mastered

Answer: A

Explanation:

Options

Share

Embed

Get Data

Pin

Answer Area

Requirement

Option

Ensure that coworkers can see the dashboard.

Share

Display data from Microsoft Excel in the dashboard.

Get Data

Add a report tile to the dashboard.

Pin

NEW QUESTION 143

- (Exam Topic 7)

Instructions: For each of the following statements, select Yes if the statement is true. Otherwise, select No. NOTE: Each correct selection is worth one point.

Answer Area

Statements	Yes	No
Stages are added under each step of a business process flow design.	<input type="radio"/>	<input type="radio"/>
Power Automate desktop flows can be used to copy a file to a folder on your local machine.	<input type="radio"/>	<input type="radio"/>
Power Automate flows can be copied to a separate solution for export to another environment.	<input type="radio"/>	<input type="radio"/>

- A. Mastered
- B. Not Mastered

Answer: A

Explanation:

Answer Area

Statements	Yes	No
Stages are added under each step of a business process flow design.	<input checked="" type="radio"/>	<input type="radio"/>
Power Automate desktop flows can be used to copy a file to a folder on your local machine.	<input checked="" type="radio"/>	<input type="radio"/>
Power Automate flows can be copied to a separate solution for export to another environment.	<input checked="" type="radio"/>	<input type="radio"/>

NEW QUESTION 146

- (Exam Topic 7)

You are authoring a Power Virtual Agents chatbot for a company for each of the following statements, select Yes if the statement is true. Otherwise, select No. NOTE: Each correct selection is worth one point.

Statement	Yes	No
When escalating to a live person from a chatbot, the customer must restate their issue and other information collected.	<input type="radio"/>	<input type="radio"/>
You can customize the greeting topic for every chatbot that you author.	<input type="radio"/>	<input type="radio"/>

- A. Mastered
- B. Not Mastered

Answer: A

Explanation:

Text, letter Description automatically generated

NEW QUESTION 149

- (Exam Topic 7)

A company uses a manual process to manage escalations for customer support calls. You must use Power Automate to automate the process for routing escalated calls. You need to create the flow. Which type of connector should you use?

- A. Office 365 Users
- B. Microsoft Excel
- C. Microsoft Dataverse

Answer: C

NEW QUESTION 150

- (Exam Topic 7)

You develop a Power Virtual Agents chatbot in a Microsoft Teams channel named Expenses. You need to identify the operations the chatbot can perform. Which two actions can the chatbot perform? Each correct answer presents a complete solution. NOTE: Each correct selection is worth one point.

- A. Transfer a chat to a live person if the chatbot cannot answer the question.
- B. Staff who are not members of the Expenses team can use the chatbot.
- C. Trigger a request for approval from a senior manager for high-value expenses.
- D. Upload and process a PDF file.

Answer: AC

NEW QUESTION 151

- (Exam Topic 7)

You are creating a Power Automate solution.

You need to select a Power Automate control action for each function in the flow.

Which control action should you use? To answer, drag the appropriate control actions to the correct functions. Each control action may be used once, more than once, or not at all. You may need to drag the split bar between panes or scroll to view content.

NOTE: Each correct selection is worth one point.

Answer Area

Control actions	Function	Control action
Do until	Continue performing a set of actions unless a condition becomes true.	
Apply to each	Allow multiple branches to be created based on a set of options.	
Switch	Allow two branches to be created based on a true/false condition.	
Condition		

- A. Mastered
- B. Not Mastered

Answer: A

Explanation:

Graphical user interface, text, application Description automatically generated

NEW QUESTION 156

- (Exam Topic 7)

A company has an online store to sell toys. The volume of order tracking requests has increased. You need to allow customers to use an interactive interface on the website to request order tracking Information.

Which technology should you use?

- A. Customer Service Insights
- B. Power BI
- C. Power Virtual Agents chatbots
- D. Power Automate flows

Answer: A

NEW QUESTION 159

- (Exam Topic 7)

An organization plans to create Power Platform solutions and is evaluating Microsoft Dataverse. Instructions: For each of the following statements, select Yes if the statement is true. Otherwise, select No. NOTE: Each correct selection is worth one point.

	Yes	No
Virtual table data is stored in Microsoft Dataverse.	<input type="radio"/>	<input type="radio"/>
Columns are used in forms and views.	<input type="radio"/>	<input type="radio"/>

- A. Mastered
- B. Not Mastered

Answer: A

Explanation:

Graphical user interface, text Description automatically generated with medium confidence

Box 1: No

A virtual table is a definition of a table in the Dataverse platform without the associated physical tables for table instances created in the Dataverse database. Instead during runtime, when a table instance is required, its state is dynamically retrieved from the associated external system.

Box 2: Yes

Columns in forms: In the form designer, drag any columns from the Columns Explorer into the section on the form.

Reference:

<https://docs.microsoft.com/en-us/powerapps/developer/data-platform/virtual-entities/get-started-ve>

NEW QUESTION 160

- (Exam Topic 7)

A company uses a model-driven app for its sales team.

You must customize a form to meet the following requirements:

- If a check box is checked, a hidden field must appear.
- The form must display a list of customers and fields about customers.

You need to identify the components a developer must configure to meet the requirements. What should you identify?

Components

Column

View

Form

Table

Answer Area

Requirement

Hidden field appears

List of customers and fields displays

Component

Component

Component

- A. Mastered  
B. Not Mastered

Answer: A

Explanation:

Form Table

NEW QUESTION 165

- (Exam Topic 7)

You are creating a Power Automate flow.

You need to retrieve data from several sources deluding Microsoft Excel, Azure Data lake, and GitHub.

What should you use? To answer, drag the appropriate components to the correct data sources. Each component may be used once, more than once, or not at all.

You may need to drag the split bar between panes or scroll to view content.

NOTE: Each correct selection Is worth one point

Components

Connector

Expression

Formula

Answer Area

Data source

Microsoft Excel

Azure Data Lake

GitHub

Component

- A. Mastered  
B. Not Mastered

Answer: A

Explanation:

Box 1: Formula

Reading an Excel document retrieves the data from the document, allowing it to be processed and modified in flows.

Read and extract data from an Excel document with the Read from Excel worksheet action.

Box 2: Connector

Azure Data Lake Store connector allows you to read and add data to an Azure Data Lake account. The Azure Data Lake connector is available for Power Automate.

Box 3: Expression Reference:

<https://docs.microsoft.com/en-us/learn/modules/pad-excel-automation/3-reading-excel-document> <https://docs.microsoft.com/en-us/connectors/azuredatalake/>

NEW QUESTION 170

- (Exam Topic 7)

You are creating Power BI visualizations.

You need to display the visuals where a user can perform each function.

Which solution should you use? To answer, select the appropriate option in the answer area. NOTE: Each correct selection is worth one point.

Answer Area

Requirement	Solution
Make decisions by analyzing high-level KPIs.	<div><div></div><div>Power BI service</div><div>Power BI Desktop</div><div>Power BI dashboards</div></div>
Drill down into the details of a visual.	<div><div></div><div>Power BI reports</div><div>Power BI Desktop</div><div>Power BI dashboards</div></div>

- A. Mastered  
B. Not Mastered

Answer: A

Explanation:  
Text, letter Description automatically generated

NEW QUESTION 175

- (Exam Topic 7)  
instructions: For each of the following statements, select Yes if the statement is true. Otherwise, select No. NOTE: Each correct selection is worth one point.

Statements	Yes	No
A Microsoft Power Platform environment must contain a Microsoft Dataverse database.	<input type="radio"/>	<input type="radio"/>
An app created in an environment can only connect to the data sources that are deployed in the same environment.	<input type="radio"/>	<input type="radio"/>
Microsoft Dataverse for Teams environments are automatically created for all members of the team when you create a Microsoft Power Platform app in Microsoft Teams.	<input checked="" type="radio"/>	<input type="radio"/>

- A. Mastered  
B. Not Mastered

Answer: A

Explanation:

Statements	Yes	No
A Microsoft Power Platform environment must contain a Microsoft Dataverse database.	<input checked="" type="radio"/>	<input type="radio"/>
An app created in an environment can only connect to the data sources that are deployed in the same environment.	<input checked="" type="radio"/>	<input type="radio"/>
Microsoft Dataverse for Teams environments are automatically created for all members of the team when you create a Microsoft Power Platform app in Microsoft Teams.	<input checked="" type="radio"/>	<input type="radio"/>

NEW QUESTION 177

- (Exam Topic 7)  
Instructions: For each of the following statements, select Yes if the statement is true. Otherwise, select No.  
NOTE: Each correct selection is worth one point.

	Yes	No
Managed solutions can be used to group multiple Power Platform components together during solution development.	<input type="radio"/>	<input type="radio"/>
Managed solutions must be used to distribute a Power Platform application on AppSource.	<input type="radio"/>	<input type="radio"/>
Managed solutions always protect Power Platform components from editing when components are exported to another environment.	<input type="radio"/>	<input type="radio"/>

- A. Mastered  
B. Not Mastered

Answer: A

**Explanation:**

Box 1: Yes

Managed solutions are used to deploy to any environment that isn't a development environment for that solution.

Box 2: No

Unmanaged solutions can be exported either as unmanaged or managed.

Box 3: Yes

You can't edit components directly within a managed solution. To edit managed components, first add them to an unmanaged solution.

Reference:

<https://docs.microsoft.com/en-us/power-platform/alm/solution-concepts-alm>

**NEW QUESTION 182**

- (Exam Topic 7)

For each of the following statements, select Yes if the statement is true, Otherwise, select No. NOTE: Each correct selection is worth one point.

Answer Area

Statement	Yes	No
Power Apps apps can run only on mobile devices.	<input type="radio"/>	<input type="radio"/>
Power Apps can run only with Dynamic 365 products.	<input type="radio"/>	<input type="radio"/>
If a user runs a Power Apps app that accesses information to which the user does not have access, the app grants the user permissions.	<input type="radio"/>	<input type="radio"/>

A. Mastered

B. Not Mastered

**Answer:** A

**Explanation:**

Answer Area

Statement	Yes	No
Power Apps apps can run only on mobile devices.	<input type="radio"/>	<input checked="" type="radio"/>
Power Apps can run only with Dynamic 365 products.	<input type="radio"/>	<input checked="" type="radio"/>
If a user runs a Power Apps app that accesses information to which the user does not have access, the app grants the user permissions.	<input checked="" type="radio"/>	<input type="radio"/>

**NEW QUESTION 187**

- (Exam Topic 7)

You create a multi-page Power BI report for an organization.

You must enable salespeople in the organization to use the report to view data relevant to their sales region only.

You need to enable security for the report. What should you use?

A. Microsoft Trust Center

B. row-level security

C. data loss prevention policies

D. sensitivity labels

E. Microsoft Azure Active Directory

**Answer:** B

**NEW QUESTION 191**

- (Exam Topic 7)

A company plans to implement Power BI.

Instructions: For each of the following statements, select Yes if the statement is true. Otherwise, select No. NOTE: Each correct selection is worth one point.

**Answer Area**

Statements	Yes	No
Power BI Report Builder is the only tool used to create reports to be published to the Power BI service.	<input type="radio"/>	<input type="radio"/>
Power BI service can include calculated columns.	<input type="radio"/>	<input type="radio"/>
Power BI Desktop can include calculated columns.	<input type="radio"/>	<input type="radio"/>

A. Mastered

B. Not Mastered

**Answer:** A

**Explanation:**

Answer Area

Statements	Yes	No
Power BI Report Builder is the only tool used to create reports to be published to the Power BI service.	<input type="radio"/>	<input checked="" type="radio"/>
Power BI service can include calculated columns.	<input type="radio"/>	<input checked="" type="radio"/>
Power BI Desktop can include calculated columns.	<input checked="" type="radio"/>	<input type="radio"/>

NEW QUESTION 194

- (Exam Topic 7)  
You plan to create a model-driven app for a company that sells plants and garden supplies. The app must meet the following requirements:

- Automatically send email to a customer when a record is modified.
- Ensure that all sales people follow the same steps when processing sales.

You need to create Power Automate flows for the app.

Flow types	Requirement	Flow type
<input type="text" value="Button"/>	Send email to customers.	<input type="text" value="Flow type"/>
<input type="text" value="Automatic"/>	Ensure that salespeople follow the same steps.	<input type="text" value="Flow type"/>
<input type="text" value="Scheduled"/>		
<input type="text" value="Business Process"/>		

- A. Mastered
- B. Not Mastered

Answer: A

Explanation:

Flow types	Requirement	Flow type
<input type="text" value="Button"/>	Send email to customers.	<input type="text" value="Automatic"/>
<input type="text" value="Automatic"/>	Ensure that salespeople follow the same steps.	<input type="text" value="Business Process"/>
<input type="text" value="Scheduled"/>		
<input type="text" value="Business Process"/>		

NEW QUESTION 197

- (Exam Topic 7)  
A company is implementing a customer service solution by using Dynamics 365 Customer Service. The company is extending the solution to meet additional business requirements.

The solution has the following requirements:

- Customers can log on to a secure website and view the progress of customer service tickets.
- Refund requests over a certain value can be automatically sent for managerial approval in Microsoft Teams.
- Create a custom page showing a gallery of pictures within the Dynamics 365 Customer Service app. You need to use Microsoft Power Platform technologies to implement the solution.

Which technology should you use? To answer, drag the appropriate technologies to the correct requirements. Each technology may be used once, more than once, or not at all. You may need to drag the split bar between panes or scroll to view content.

NOTE: Each correct selection is worth one point.

Technologies	Requirement	Technology
<input type="text" value="Power Apps portals"/>	Customers can log on to a secure website and view the progress of customer service tickets.	<input type="text"/>
<input type="text" value="Power Automate"/>	Refund requests over a certain value can be automatically sent for managerial approval in Microsoft Teams.	<input type="text"/>
<input type="text" value="Canvas apps"/>	Create a custom page showing a gallery of pictures within the Dynamics 365 Customer Service app.	<input type="text"/>

- A. Mastered
- B. Not Mastered

Answer: A

Explanation:

Technologies

Power Apps portals

Power Automate

Canvas apps

Answer Area

Requirement

Customers can log on to a secure website and view the progress of customer service tickets.

Refund requests over a certain value can be automatically sent for managerial approval in Microsoft Teams.

Create a custom page showing a gallery of pictures within the Dynamics 365 Customer Service app.

Technology

Power Apps portals

Power Automate

Canvas apps

NEW QUESTION 200

- (Exam Topic 7)

A company plans to use Power Automate to automate tasks.

Match each flow type to its description to answer, drag the appropriate now type from the column on the left to its description on the right. Each option may be used once, more than once, or not at all.

NOTE: Each correct match is worth one point.

Flow types

automated

business process

scheduled

instant

Answer Area

Description

a flow that runs after it is triggered by an event

a flow that guides a user through a set of tasks

a flow that runs after a specified number of days

a flow that allows you to start tasks on demand

Flow type

Flow type

Flow type

Flow type

- A. Mastered
- B. Not Mastered

Answer: A

Explanation:

Flow types

automated

business process

scheduled

instant

Answer Area

Description

a flow that runs after it is triggered by an event

a flow that guides a user through a set of tasks

a flow that runs after a specified number of days

a flow that allows you to start tasks on demand

Flow type

automated

business process

scheduled

instant

NEW QUESTION 201

- (Exam Topic 7)

You are creating a model-driven app.

For each of the following statements, select Yes if the statement is true. Otherwise, select No.

NOTE: Each correct selection is worth one point.

Statements	Yes	No
To add entities to an app, entities are dragged onto the app canvas from the components area.	<input type="radio"/>	<input type="radio"/>
View definition is created in the component area of the app designer.	<input type="radio"/>	<input type="radio"/>
You must save, validate, and publish your app for others to see the changes.	<input type="radio"/>	<input type="radio"/>

- A. Mastered
- B. Not Mastered

Answer: A

Explanation:

Reference:

https://docs.microsoft.com/en-us/powerapps/maker/model-driven-apps/build-first-model-driven-app

https://docs.microsoft.com/en-us/powerapps/maker/model-driven-apps/validate-app

#### NEW QUESTION 204

- (Exam Topic 7)

You are developing reports for a company.

You must create visualizations that include the following data:

- Invoices due from a third-party enterprise resource planning (ERP) system
- Number of calls made to the client from Microsoft Dataverse
- Microsoft Excel file data

The reports must be displayed in a single page. You need to create the visualizations.

What should you use?

- A. deployment pipelines
- B. tables
- C. columns
- D. dashboards

**Answer:** D

#### NEW QUESTION 209

- (Exam Topic 7)

A company uses Power Apps canvas apps.

When a user opens Power Apps Studio in a browser and selects Apps I can edit, they do not see an app that they need to modify.

You need to determine why the user cannot see the app.

What are three possible reasons? Each correct answer presents a complete solution. NOTE: Each correct selection is worth one point.

- A. The user selected an incorrect Power Apps environment.
- B. The user has not been granted the System Customizer role.
- C. The user has not been set as the app co-owner.
- D. The app has not been shared with the user.
- E. The environment does not have a Common Data Service database.

**Answer:** ACD

#### Explanation:

Reference:

<https://docs.microsoft.com/en-us/powerapps/maker/canvas-apps/edit-app>

#### NEW QUESTION 212

.....

## THANKS FOR TRYING THE DEMO OF OUR PRODUCT

Visit Our Site to Purchase the Full Set of Actual PL-900 Exam Questions With Answers.

We Also Provide Practice Exam Software That Simulates Real Exam Environment And Has Many Self-Assessment Features. Order the PL-900 Product From:

<https://www.2passeasy.com/dumps/PL-900/>

## Money Back Guarantee

### PL-900 Practice Exam Features:

- \* PL-900 Questions and Answers Updated Frequently
- \* PL-900 Practice Questions Verified by Expert Senior Certified Staff
- \* PL-900 Most Realistic Questions that Guarantee you a Pass on Your FirstTry
- \* PL-900 Practice Test Questions in Multiple Choice Formats and Updatesfor 1 Year