

HP

Exam Questions HPE6-A72

Aruba Certified Switching Associate Exam



NEW QUESTION 1

Match the term to the correct description.

Term		Description
BGP		used for creating backup routes by implementing a higher administrative distance
Floating Static Routes		a distance vector protocol
OSPFv2		an ipv4 link-state routing protocol that runs within an Autonomous System
OSPFv3		used to route traffic between Autonomous Systems
RIPv2		a routing protocol capable of routing IPv6 packets

- A. Mastered
B. Not Mastered

Answer: A

Explanation:

Term		Description
BGP	Floating Static Routes	used for creating backup routes by implementing a higher administrative distance
Floating Static Routes	RIPv2	a distance vector protocol
OSPFv2	OSPFv2	an ipv4 link-state routing protocol that runs within an Autonomous System
OSPFv3	BGP	used to route traffic between Autonomous Systems
RIPv2	OSPFv3	a routing protocol capable of routing IPv6 packets

NEW QUESTION 2

Match each network protocol to the correct default listening port and transport protocol. Not all answers will be used.

Default Port and Transport protocol		Network protocol
TCP 20, TCP 21		DNS
TCP 23		FTP
TCP 53		HTTPS
TCP 443		Telnet
UDP 20, UDP 21		DHCP
UDP 23		
UDP 53		
UDP 67		

- A. Mastered
B. Not Mastered

Answer: A

Explanation:

Default Port and Transport protocol		Network protocol
TCP 20, TCP 21	FTP	DNS
TCP 23	Telnet	FTP
TCP 53		HTTPS
TCP 443	HTTPS	Telnet
UDP 20, UDP 21		DHCP
UDP 23		
UDP 53	DNS	
UDP 67	DHCP	

NEW QUESTION 3

The customer has 778 developers testing computer games on the network. Which two actions resolve Broadcast storms? (Choose two.)

- A. Manually disable the redundant link to immediately resolve the impacted portion of the network.
- B. Utilize Spanning Tree to dynamically disable all redundant links in a segment.
- C. Setting switch ports to half-duplex will resolve Broadcast storms using Carrier Sense Multiple-Access Collision Detection (CSMA/CD).
- D. Enable single Area Open Shortest Path First (OSPF) on all Layer 2 switches, but do not enable routing.
- E. Utilize Spanning Tree to dynamically block Designated ports in addition to Alternate ports.

Answer: AB

NEW QUESTION 4

Which two statements are true regarding Checkpoints on Aruba switches? (Choose two.)

- A. Rolling back to a prior checkpoint triggers a reboot of the switch.
- B. Stacking switches using VSF or VSX will disable the Checkpoint feature.
- C. A checkpoint is a snapshot of the running-configuration and relevant metadata at the time the checkpoint was created.
- D. System-generated checkpoints are created after a configuration change and 5 minutes of inactivity.
- E. Checkpoints are available on AOS 5400R switches, as well as on all AOS-CX switches.

Answer: CE

NEW QUESTION 5

What is the login and password combination is used when first configuring an Aruba OS-CX switch from factory defaults?

- A. Login admin and password field empty.
- B. Login admin and password forgetme!
- C. Login admin and password password.

Answer: B

NEW QUESTION 6

Match the switching term to the correct definition.

Term**Definition**

Broadcast Domain

Collision Domain

CSMA/CD

Forwarding Table

defines the group of devices that are on the same network segment that are capable of receiving and responding to frames destined to FF:FF:FF:FF:FF:FF

the FIB used by switches matching known-source mac-addresses to the layer one port they are learned on

the mechanism used by Compute NICs and Switchports operating in half-duplex to detect and recover from frame collisions

the segment of a network connected by a shared medium, such as a hub, that is affected when two or more frames are sent at the same time

- A. Mastered
B. Not Mastered

Answer: A

Explanation:

Term**Definition**

Broadcast Domain

Collision Domain

CSMA/CD

Forwarding Table

Broadcast Domain

Forwarding Table

CSMA/CD

Collision Domain

defines the group of devices that are on the same network segment that are capable of receiving and responding to frames destined to FF:FF:FF:FF:FF:FF

the FIB used by switches matching known-source mac-addresses to the layer one port they are learned on

the mechanism used by Compute NICs and Switchports operating in half-duplex to detect and recover from frame collisions

the segment of a network connected by a shared medium, such as a hub, that is affected when two or more frames are sent at the same time

NEW QUESTION 7

Which two options are correct regarding the IEEE 802.11ax standard? (Choose two.)

- A. allows transmissions of up to 4.8Gbps
B. is an emerging satellite connection standard to allow wireless access anywhere in the world
C. operates only in the 5GHz similar to 802.11ac
D. operates in both the 2.4GHz and 5GHz radios bands
E. is the first WLAN standard to no longer use electromagnetic signals to transmit data

Answer: AD

NEW QUESTION 8

What are two methods for remotely managing an Aruba AOS-CX switch? (Choose two.)

- A. SNMPv2c
B. HTTPS
C. USB-C console
D. Telnet
E. SSH

Answer: BE

NEW QUESTION 9

Which two types of routes can be found in the IP routing table of an Aruba AOS-CX switch? (Choose two.)

- A. Local
- B. EIGRP
- C. BGP
- D. ISIS
- E. RIPng

Answer: AC

NEW QUESTION 10

Match each description to the correct term.

Term	Description
ASIC	<input type="text"/> receives and sends frames by using Application-Specific Integrated Circuits (ASICs)
Control Plane	<input type="text"/>
Data Plane	<input type="text"/> switches packets faster than using software
Management Plane	<input type="text"/> determines packet forwarding using routing, switching, security, and flow optimization
	<input type="text"/> handles switch monitoring

- A. Mastered
- B. Not Mastered

Answer: A

Explanation:

Term	Description
ASIC	<input type="text"/> receives and sends frames by using Application-Specific Integrated Circuits (ASICs)
Control Plane	<input type="text"/>
Data Plane	<input type="text"/> switches packets faster than using software
Management Plane	<input type="text"/> determines packet forwarding using routing, switching, security, and flow optimization
	<input type="text"/> handles switch monitoring

NEW QUESTION 10

Which command can be used to find the serial number of an Aruba OS-CX switch?

- A. The command inventory
- B. The command version
- C. The command show running-configuration
- D. The command show system

Answer: D

NEW QUESTION 15

Which option correctly describes a WAN network?

- A. a group of computer resources that communicates between geographically separate location
- B. the connection between two separate buildings in the same campus
- C. a network of devices over long distances but limited to within a single ISP
- D. compute resources that are networked locally over wireless

Answer: A

NEW QUESTION 19

Refer to the exhibit.

```
SW1# show vlan
-----
VLAN    Name             Status    Reason    Type         Interfaces
-----
1       DEFAULT_VLAN_1  up        ok        default      <output omitted>
10      Engineering      up        ok        static       1/1/1-1/1/7
20      Guest           up        ok        static       1/1/11-1/1/14
```

The above command was applied to an Aruba AOS-CX 6300M 24-port switch with 4-port SFP56 uplinks. All ports are set as access switchports. Which ports carry VLAN 1 traffic?

- A. 1/1/8, 1/1/10, 1/1/5-1/1/24
- B. 1/1/1-1/1/28
- C. 1/1/1-1/1/24
- D. 1/1/8-1/1/10, 1/1/5-1/1/28

Answer: D

NEW QUESTION 22

The section in blue can be ignored.

```
SW1(config)# interface 1/1/1-1/1/2
```

```
SW1(config-if-<1/1/1-1/1/2)# vlan access 2
```

```
SW1(config-if-<1/1/1-1/1/2)# exit
```

```
SW1(config)# interface 1/1/11-1/1/17
```

```
SW1(config-if-<1/1/11-1/1/17)# vlan access 17
```

```
SW1(config-if-<1/1/11-1/1/17)# exit
```

After completing the above commands, what is the expected output of show vlan with no other vlan commanded having been added?

A.

```
SW1# show vlan
-----
VLAN    Name             Status    Reason    Type         Interfaces
-----
1       DEFAULT_VLAN_1  up        ok        default      1/1/2
2       [REDACTED]      up        ok        static       1/1/2
11      [REDACTED]      up        ok        static       1/1/17
12      [REDACTED]      up        ok        static       1/1/17
13      [REDACTED]      up        ok        static       1/1/17
14      [REDACTED]      up        ok        static       1/1/17
15      [REDACTED]      up        ok        static       1/1/17
16      [REDACTED]      up        ok        static       1/1/17
17      [REDACTED]      up        ok        static       1/1/17
```

B.

```
SW1# show vlan
-----
VLAN    Name             Status    Reason    Type         Interfaces
-----
1       DEFAULT_VLAN_1  up        ok        default      1/1/1-1/1/24
2       [REDACTED]      up        ok        static       1/1/1-1/1/2
17      [REDACTED]      up        ok        static       1/1/11-1/1/17
```

C.

```
SW1# show vlan
-----
VLAN    Name             Status    Reason    Type         Interfaces
-----
2       DEFAULT_VLAN_2  up        ok        static       1/1/1-1/1/2
17      [REDACTED]      up        ok        static       1/1/11-1/1/17
```

D.

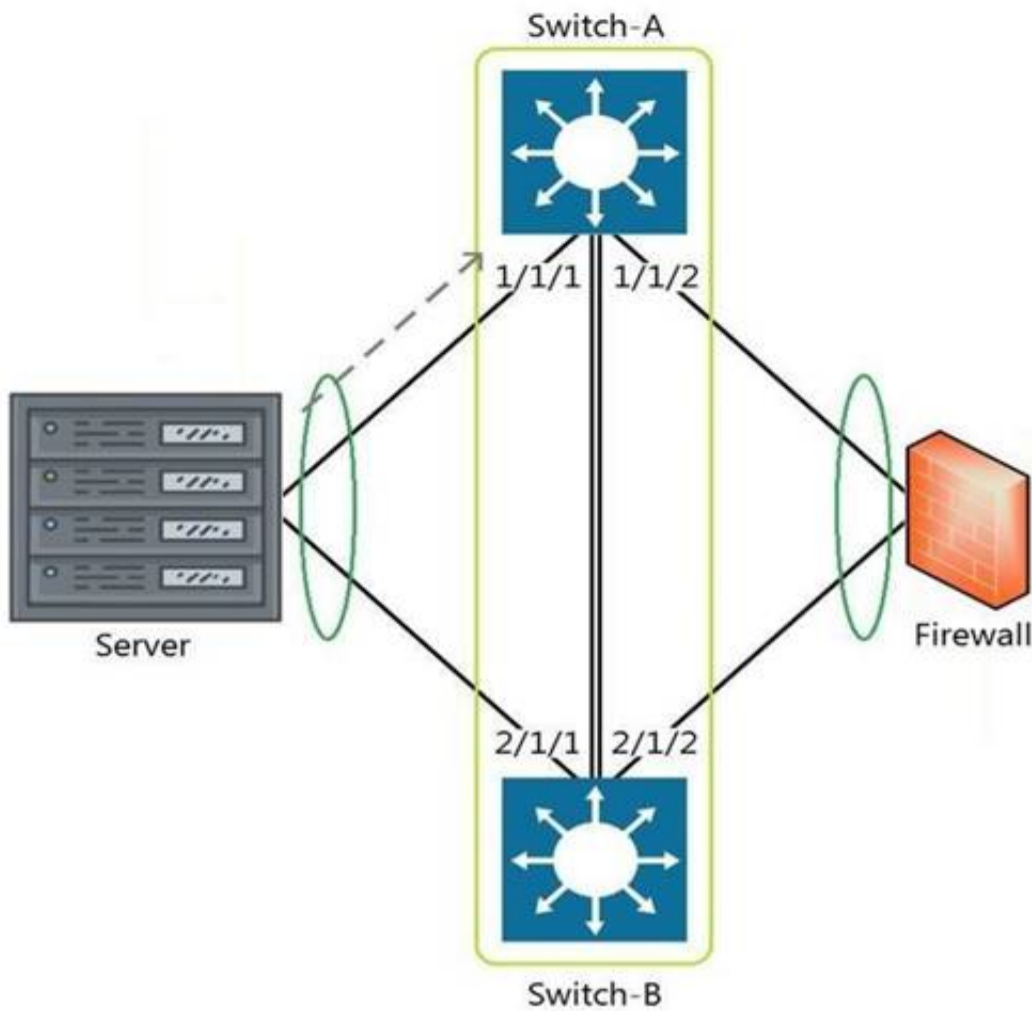
```
SW1# show vlan
-----
VLAN    Name             Status    Reason    Type         Interfaces
-----
1       DEFAULT_VLAN_1  up        ok        default      <output omitted>
2       [REDACTED]      up        ok        static       1/1/1-1/1/2
17      [REDACTED]      up        ok        static       1/1/11-1/1/17
```

- A. Option A
- B. Option B
- C. Option C
- D. Option D

Answer: D

NEW QUESTION 27

Refer to the exhibit.



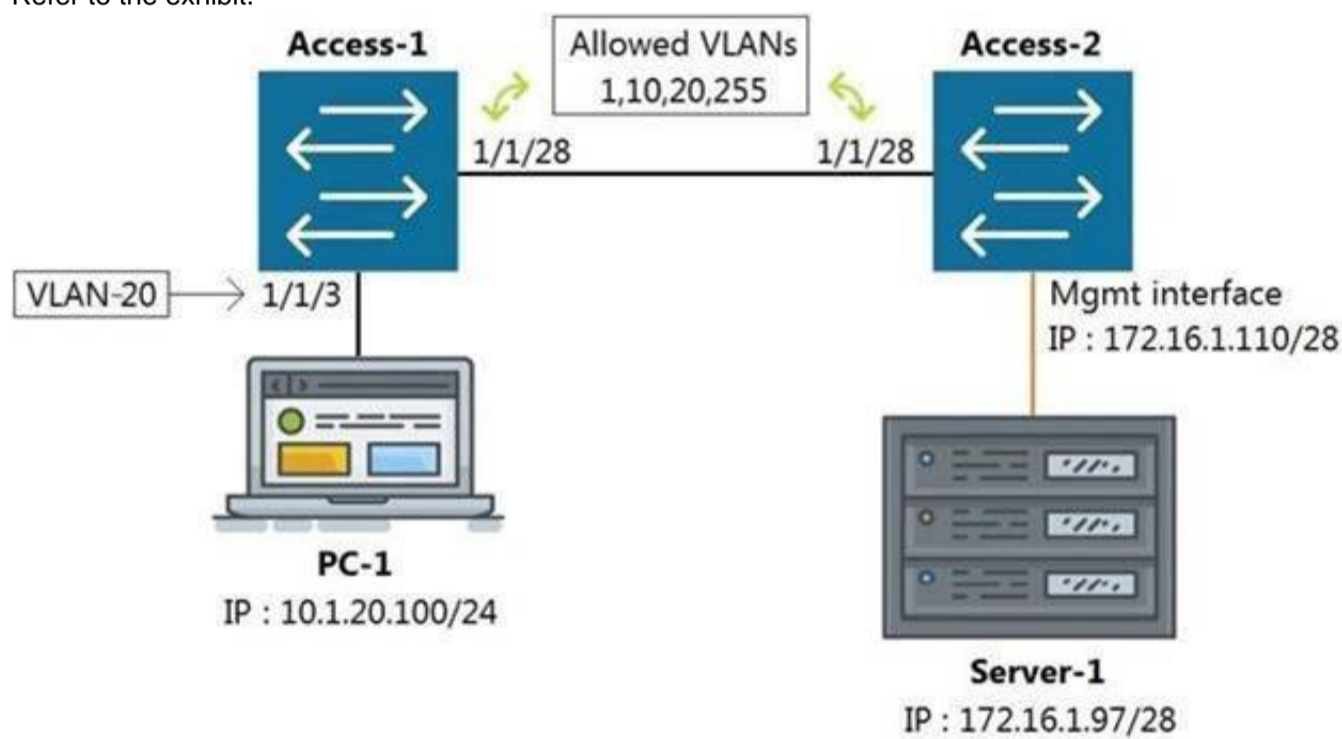
The above scenario shows a packet from the Server destined for the Firewall. Switch-A and Switch-B are bundled as VSF stack. The LAG between the VSF stack and the firewall indicates a hash function to forward the packet on port 2/1/2. Which statement is true regarding how Switch-A will forward the packet?

- A. Switch-A will forward the packet on port 1/1/2. VSF will override the typical LAG hash function used for the physical interface selection.
- B. Switch-A will drop the packet
- C. Multi-Chassis lag to multi-chassis lag is not a supported feature of VSF.
- D. Switch-A will encapsulate the packet using GRE to forward to Switch-B in order for the packet to egress on port 2/1/2 per the hash function.
- E. Switch-A will forward the packet along the VSF link to Switch-B so that it will egress on port 2/1/2 per the hash function.

Answer: D

NEW QUESTION 32

Refer to the exhibit.



All switches are running Aruba OS-CX. While working in the terminal of Access-2, you are unable to reach Server-1 using SSH. What is the correct command to ping Server-1 from Access-2 to test reachability?

- A. Access-2# ping6 172.16.1.97 vrf mgm
- B. Access-2# ping 172.16.1.97
- C. Access-2# ping 172.16.1.97 vrf default
- D. Access-2# ping 172.16.1.97 vrf mgmt

Answer: D

NEW QUESTION 33

Which switch supports a maximum of 8 line-cards, 3 fabric modules, and 2 management cards?

- A. Aruba 8400
- B. Aruba 8408
- C. Aruba 6410

D. Aruba 5412r

Answer: A

NEW QUESTION 38

What are two available options as part of a DHCP offer message? (Choose two.)

- A. SSID
- B. DNS server IP
- C. Subnet Mask
- D. LLDP-MED
- E. VLANID

Answer: BC

NEW QUESTION 43

What are two features of the three-tier designs? (Choose two.)

- A. removes the distribution layer in favor of a spine-leaf design used in modern data center deployments
- B. adds a distribution layer to free up resources from the Core for improved performance and routing throughput
- C. a more scalable design over by leveraging a distribution layer to handle Layer 3 routing and access control in large deployments
- D. uses only Layer 2 access on the Access and the Core with Layer 3 routing and access control provided at the distribution layer
- E. is considered legacy by requiring a large flat layer-two broadcast domain from Core to Access and should be avoided

Answer: BC

NEW QUESTION 48

What are the commands to disable SSH and HTTPS services from the default VRF?

- A. Core-1(config)# no ssh server Core-1(config)# no https-server
- B. Core-1# no ssh server vrf default Core-1# no https-server vrf default
- C. Core-1(config)# no ssh server enable Core-1(config)# no https-server enable
- D. Core-1(config)# no ssh server vrf default Core-1(config)# no https-server vrf default

Answer: D

NEW QUESTION 53

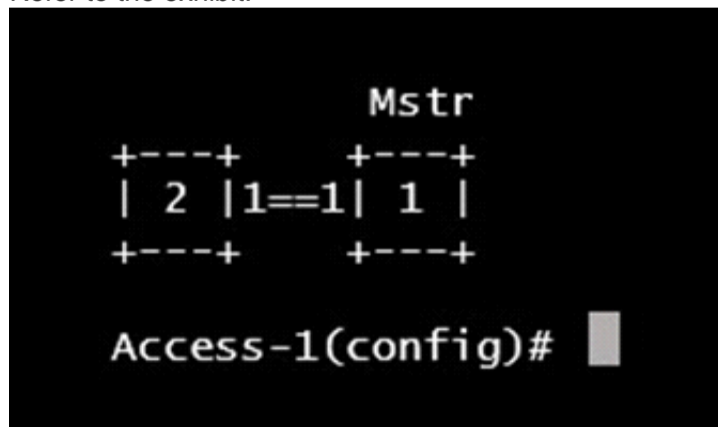
Which command will suppress LLDP messages from egressing on a given port while still allowing LLDP to be enabled on the switch?

- A. switch(config-if)# no lldp interface (port) transmit
- B. switch(config-if)# no lldp transmit
- C. switch(config-if)# no lldp receive
- D. switch(config)# no lldp

Answer: B

NEW QUESTION 57

Refer to the exhibit.



What VSF command produces the above output?

- A. show vsf member
- B. show vsf link
- C. show vsf topology
- D. show vsf detail

Answer: C

NEW QUESTION 61

Your customer has 349 users in a two-story building. What are two benefits of a 2-Tier design? (Choose two.)

- A. Layer 2 and Layer 3 protocols run close to the endpoints to better implement ACL and QoS policy at the edge.
- B. Improved performance by offloading processing from the Access layer to the Core.
- C. Use of layer 2 switches at the access layer can process and route traffic from attached APs.
- D. Support for WAN/MPLS, Internet, and Data Center directly on the Collapsed core.

E. Provides a more cost effective solution given that no additional switches are required for a third tier.

Answer: AE

NEW QUESTION 63

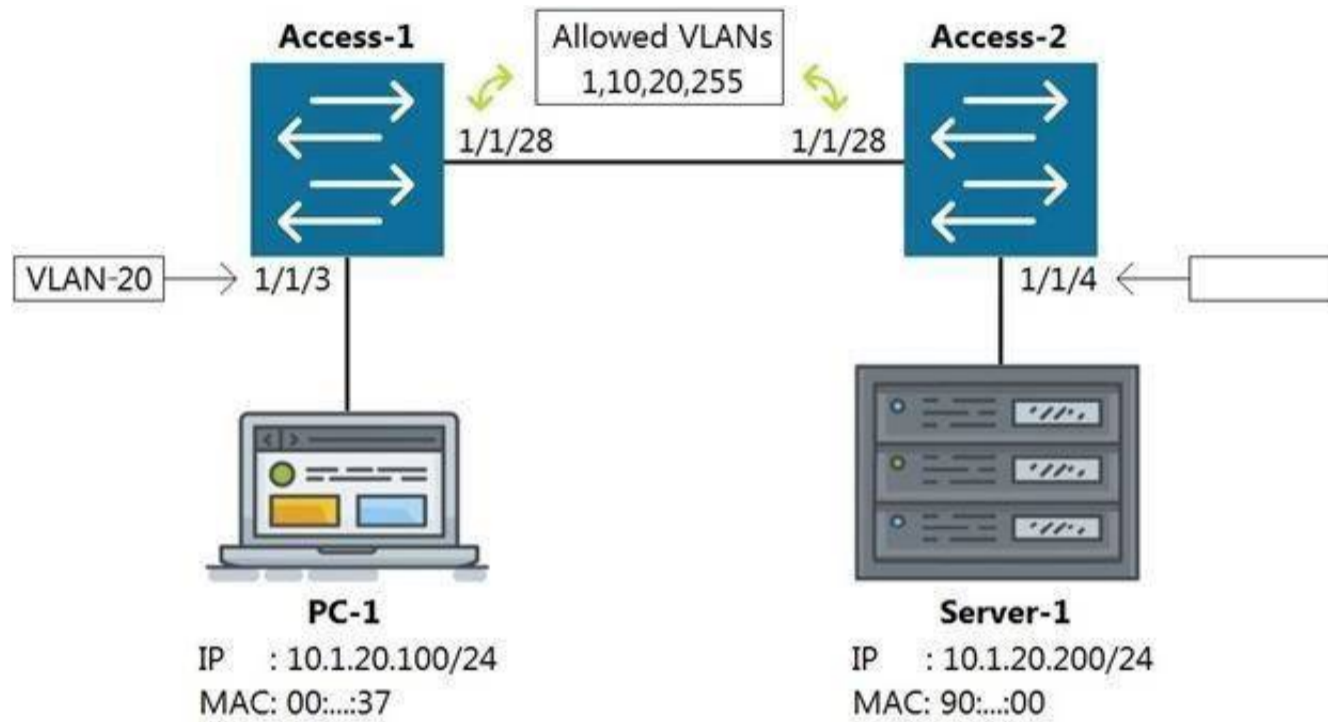
What is a benefit of choosing a 3-Tier design with routing at the Aggregation layer?

- A. Better Core router performance by offloading processing
- B. Shifting endpoint access to the Aggregation layer from the Access layer
- C. Using access control lists (ACLs) at the Core to improve performance
- D. Connecting WAN/MPLS and Data center access to the Aggregation layer

Answer: A

NEW QUESTION 66

Refer to the exhibit



Which command on Access-2 port 1/1/4 will enable connectivity between PC-1 and Server-1 without any routing enabled in the network?

- A. Access-2 (config-if-1/1/4)# vlan access 1, 10, 20, 255
- B. Access-2 (config-if-1/1/4)# vlan access 20
- C. Access-2 (config-if-1/1/4)# vlan 20 untag 1/1/4
- D. Access-2 (config-if-1/1/4)# vlan trunk allow 1, 10, 255

Answer: B

NEW QUESTION 70

What command displays information regarding the secondary image installed on an AOS-CX switch?

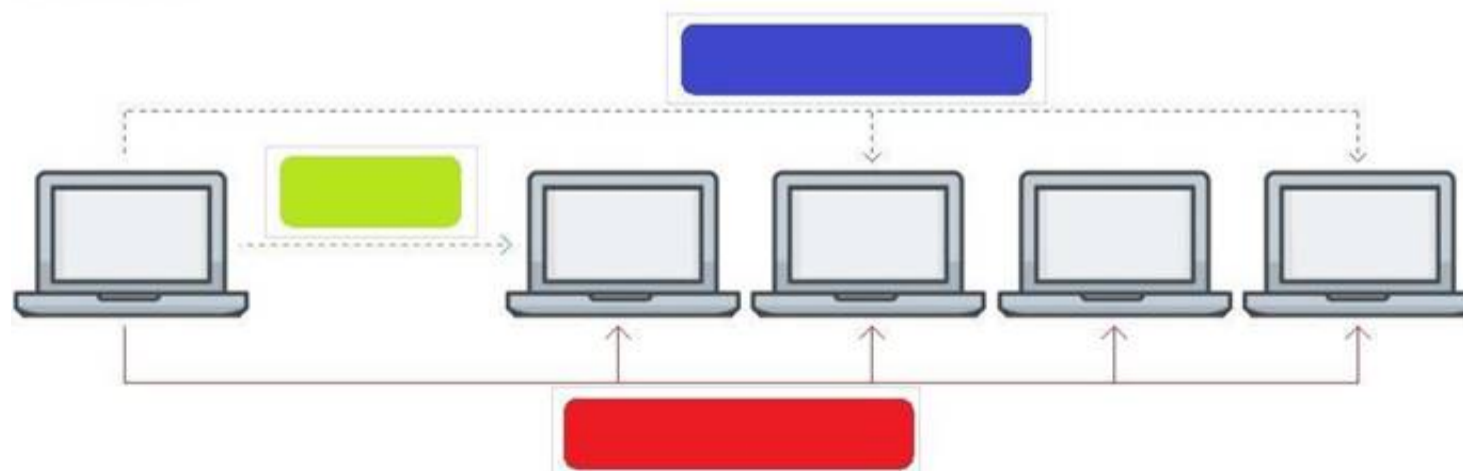
- A. show secondary
- B. show version detail
- C. show version
- D. show images

Answer: D

NEW QUESTION 72

Click on the colored box that corresponds with the line that best represents Broadcast traffic flow.

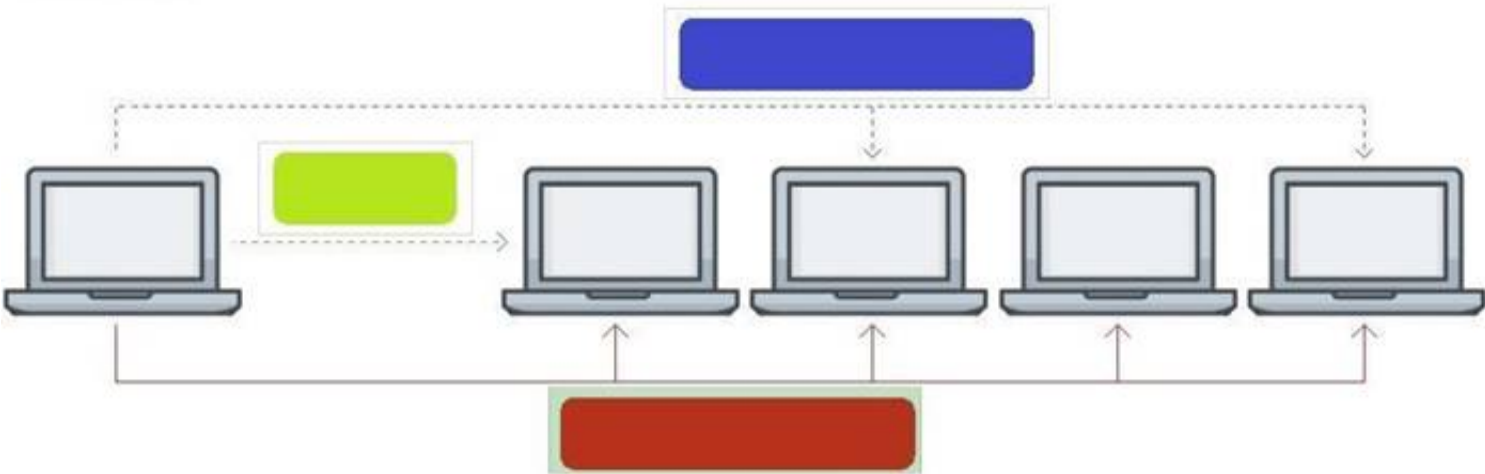
Answer Area



- A. Mastered
- B. Not Mastered

Answer: A

Explanation:
Answer Area



NEW QUESTION 73

What are two mechanisms supported on AOS-CX 6300 switches used in Multi-active Detection to determine the status of the Primary member? (Choose two.)

- A. Management interface split detection
- B. Peer switch-based detection
- C. Loopback keepalives
- D. ARP-based
- E. BFD

Answer: AD

NEW QUESTION 78

Aruba Access Points tunnel traffic in a campus to the Mobility Controller using which protocol?

- A. Control and Provisioning of Wireless Access Points (CAPWAP)
- B. Generic Routing Encapsulation (GRE)
- C. Lightweight Access Point Protocol (LWAPP)
- D. Process Application Programming Interface (PAPI)

Answer: B

NEW QUESTION 83

Refer to the exhibit.

Switch-1(config)# show spanning-tree exclude Disabled					
← ---- output omitted ---->					
Port	Role	State	Cost	Priority	Type
1/1/1	Designated	Forwarding	4000	128	point_to_point
Lag1		Forwarding	2000	64	point_to_point
1/1/2	Designated	Forwarding	10000	128	point_to_point
1/1/3	Designated	Forwarding	20000	128	point_to_point

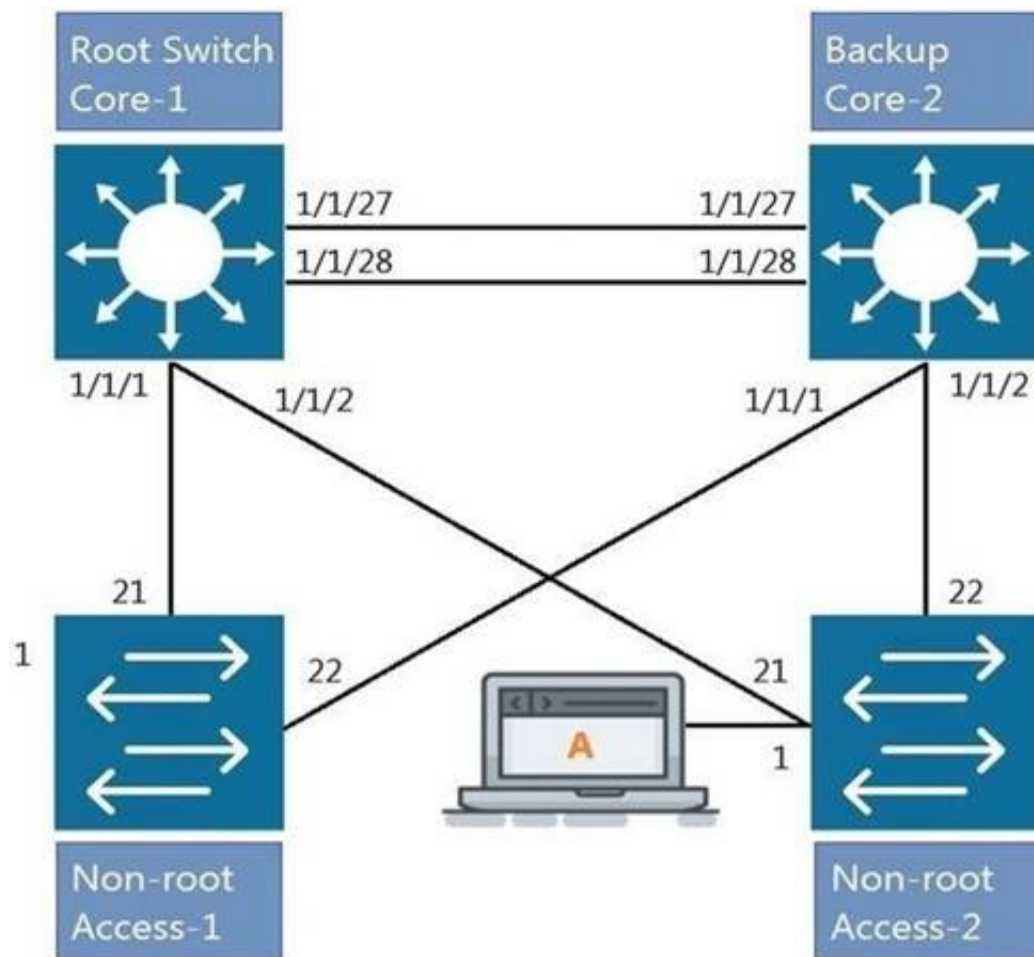
Switch-1 is not the root bridge. The ports shown are all the connected pointtopoint interfaces. What Role (hidden by the blue rectangle) will be assigned to the Lag 1 interface?

- A. Alternate
- B. Backup
- C. Root
- D. Designated

Answer: C

NEW QUESTION 88

Refer to the exhibit.



All four switches in the diagram have been configured with the region name "Aruba1".
 What two other MSTP configurations must match for switches within the same MST region? (Choose two.)

- A. MST region type
- B. MST Bridge ID
- C. MST version number
- D. MST revision number
- E. MST VLAN to instance mapping

Answer: DE

NEW QUESTION 90

Which two commands will save the running-config so that changes will be loaded automatically on the next reboot? (Choose two.)

- A. write memory
- B. save
- C. copy config config1 config startup-config
- D. copy running-config startup-config
- E. copy running-config checkpoint boot-config

Answer: AD

NEW QUESTION 94

What command will save your configuration on an Aruba AOS-CX switch so that your changes automatically load on next reboot?

- A. copy running-config checkpoint startup-config
- B. copy startup-config running-config
- C. copy running-config initial-checkpoint
- D. copy running-config default

Answer: A

NEW QUESTION 97

Which Ethernet port combination does the Aruba 5400R ZL2 switch series support?

- A. 10/100 Megabit Ethernet, Gigabit Ethernet, and 100 Gigabit Ethernet
- B. Gigabit Ethernet, 25 Gigabit Ethernet, and 40 Gigabit Ethernet
- C. 10/100 Megabit Ethernet, Gigabit Ethernet, 25 Gigabit Ethernet, and 100 Gigabit Ethernet
- D. 10/100 Megabit Ethernet, Gigabit Ethernet, and 40 Gigabit Ethernet

Answer: D

NEW QUESTION 100

Refer to the exhibit.

```
T11-Access-2# show lldp configuration
```

```
LLDP Global Configuration
```

```
=====
```

```
LLDP Enabled           : Yes
LLDP Transmit Interval : 30
LLDP Hold Time Multiplier : 4
LLDP Transmit Delay Interval : 2
LLDP Reinit Time Interval : 2
```

```
TLVs Advertised
```

```
=====
```

```
Management Address
```

```
Port Description
```

```
Port VLAN-ID
```

```
System Capabilities
```

```
System Description
```

```
System Name
```

```
OUI
```

```
LLDP Port Configuration
```

```
=====
```

```
PORT          TX-ENABLED      RX-ENABLED
```

```
-----
```

```
1/1/1         Yes           Yes
```

```
1/1/2         Yes           Yes
```

```
<--- output omitted --->
```

```
1/1/27        Yes           Yes
```

```
1/1/28        Yes           Yes
```

What configuration is needed in order for "show LLDP configuration" to show this output?

- A. none; LLDP is enabled by default on Aruba switches
- B. configuring LLDP both globally and on the interfaces
- C. enabling LLDP on the interfaces only
- D. configuring LLDP globally only

Answer: A

NEW QUESTION 101

Which two statements accurately describe stacking with Aruba switches? (Choose two.)

- A. A VSF stack is allowed between an AOS-CX 6300M and 6300F switches.
- B. VSF is a core or aggregation layer stacking technology due to the high resiliency of sharing a single control plane.
- C. The VSF feature is not compatible between AOS-CX and AOS platforms.
- D. A VSF stack is allowed between an AOS 5400R and an AOS-CX 6400.
- E. VSF and VSX are stacking option with the AOS-CX 8320. 8325. 8400. and 6400 models.

Answer: BE

NEW QUESTION 103

You have completed a successful VSF stack between two switches.

Without manually assigning a backup switch, what is the expected output when issuing a show vsf command?

- A. T1-6300-A# show vsf
 <omitted>

Member	Mac Address	type	Status	ID
1	88:3a:30:a3:e5:40	JL660A	Commander	
2	88:3a:30:a6:d9:80	JL660A	Secondary	
- B. T1-6300-A# show vsf
 <omitted>

Member	Mac Address	type	Status	ID
1	88:3a:30:a3:e5:40	JL660A	Primary	
2	88:3a:30:a6:d9:80	JL660A	Secondary	
- C. T1-6300-A# show vsf
 <omitted>

Member	Mac Address	type	Status	ID
1	88:3a:30:a3:e5:40	JL660A	Master	
2	88:3a:30:a6:d9:80	JL660A	Member	
- D. T1-6300-A# show vsf
 <omitted>

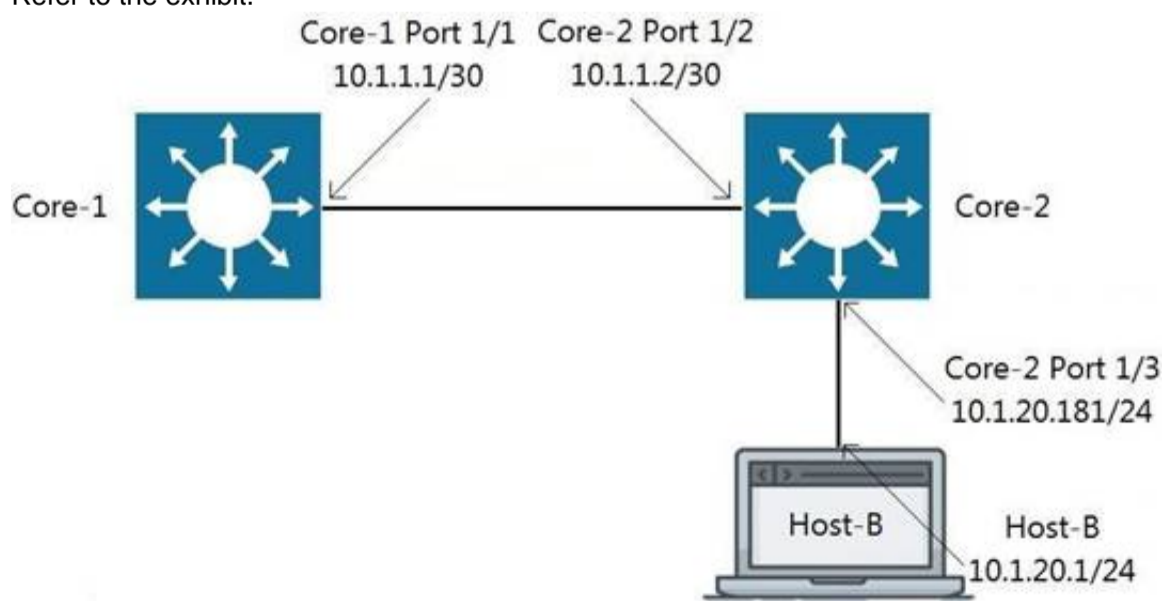
Member	Mac Address	type	Status	ID
1	88:3a:30:a3:e5:40	JL660A	Master	
2	88:3a:30:a6:d9:80	JL660A	Standby	

- A. Option A
 B. Option B
 C. Option C
 D. Option D

Answer: D

NEW QUESTION 108

Refer to the exhibit.



Traffic is failing between Core-1 and Host-B. IP addressing has correctly been applied, and all interfaces are attached to the vrf GREEN. Which configuration will correct the issue?

- A. Core-2(config)# ip route 0.0.0.0/0 10.1.1.1 vrf GREEN Host-B: assign the default-gateway address 10.1.20.181
 B. Core-1(config)# ip route 10.1.20.0/24 10.1.1.2 vrf GREEN Host-B: assign the default-gateway address 10.1.20.181
 C. Core-1(config)# ip route 10.1.20.0/24 10.1.1.2 vrf GREEN Host-B: assign the default-gateway address 10.1.20.1

D. Host-B: assign the default-gateway address 10.1.20.181

Answer: B

NEW QUESTION 110

Match each network protocol to the correct server listening port. Not all answers will be used.

Server Listening Port		Protocol	
20,21	<input type="text"/>	<input type="text" value="DHCP"/>	
22	<input type="text"/>	<input type="text" value="SSH"/>	
23	<input type="text"/>	<input type="text" value="FTP"/>	
67	<input type="text"/>	<input type="text" value="Telnet"/>	
68	<input type="text"/>	<input type="text" value="HTTP"/>	
80	<input type="text"/>		
443	<input type="text"/>		

- A. Mastered
- B. Not Mastered

Answer: A

Explanation:

Diagram Description automatically generated

NEW QUESTION 112

.....

Thank You for Trying Our Product

We offer two products:

1st - We have Practice Tests Software with Actual Exam Questions

2nd - Questions and Answers in PDF Format

HPE6-A72 Practice Exam Features:

- * HPE6-A72 Questions and Answers Updated Frequently
- * HPE6-A72 Practice Questions Verified by Expert Senior Certified Staff
- * HPE6-A72 Most Realistic Questions that Guarantee you a Pass on Your FirstTry
- * HPE6-A72 Practice Test Questions in Multiple Choice Formats and Updatesfor 1 Year

100% Actual & Verified — Instant Download, Please Click
[Order The HPE6-A72 Practice Test Here](#)