

# Microsoft

## Exam Questions AZ-800

Administering Windows Server Hybrid Core Infrastructure



## NEW QUESTION 1

SIMULATION - (Topic 4)

Task 7

You need to monitor the security configuration of DC1 by using Microsoft Defender for Cloud.

The required source files are located in a folder named \\dc1.contoso.com\install.

- A. Mastered
- B. Not Mastered

**Answer: A**

### Explanation:

One possible solution to monitor the security configuration of DC1 by using Microsoft Defender for Cloud is to use the Guest Configuration feature. Guest Configuration is a service that audits settings inside Linux and Windows virtual machines (VMs) to assess their compliance with your organization's security policies. You can use Guest Configuration to monitor the security baseline settings for Windows Server in the Microsoft Defender for Cloud portal by following these steps:

? On DC1, open a web browser and go to the folder named \\dc1.contoso.com\install.

Download the Guest Configuration extension file (GuestConfiguration.msi) and save it to a local folder, such as C:\Temp.

? Run the Guest Configuration extension file and follow the installation wizard. You can choose to install the extension for all users or only for the current user. For more information on how to install the Guest Configuration extension, see Install the Guest Configuration extension.

? After the installation is complete, sign in to the Microsoft Defender for Cloud portal (2).

? In the left pane, select Security Center and then Recommendations.

? In the recommendations list, find and select Vulnerabilities in security configuration on your Windows machines should be remediated (powered by Guest Configuration).

? In the Remediate Security Configurations page, you can see the compliance status of your Windows VMs, including DC1, based on the Azure Compute Benchmark.

The Azure Compute Benchmark is a set of rules that define the desired configuration state of your VMs. You can also see the number of failed, passed, and skipped rules for each VM. For more information on the Azure Compute Benchmark, see Microsoft cloud security benchmark: Azure compute benchmark is now available.

? To view the details of the security configuration of DC1, click on the VM name and then select View details. You can see the list of rules that apply to DC1 and their compliance status. You can also see the severity, description, and remediation steps for each rule. For example, you can see if DC1 has the latest security updates installed, if the firewall is enabled, if the password policy is enforced, and so on.

? To monitor the security configuration of DC1 over time, you can use the Compliance over time chart, which shows the trend of compliance status for DC1 in the past 30 days. You can also use the Compliance breakdown chart, which shows the distribution of compliance status for DC1 by rule severity.

By using Guest Configuration, you can monitor the security configuration of DC1 by using Microsoft Defender for Cloud and ensure that it meets your organization's security standards. You can also use Guest Configuration to monitor the security configuration of other Windows and Linux VMs in your Azure environment.

## NEW QUESTION 2

SIMULATION - (Topic 4)

Task 3

You need to configure SRV1 as a DNS server. SRV1 must be able resolve names from the contoso.com domain by using DC1. All other names must be resolved by using the root hint servers.

- A. Mastered
- B. Not Mastered

**Answer: A**

### Explanation:

One possible solution to configure SRV1 as a DNS server that can resolve names from the contoso.com domain by using DC1 and all other names by using the root hint servers is to use conditional forwarding. Conditional forwarding allows a DNS server to forward queries for a specific domain name to another DNS server, while using the normal forwarding or root hint servers for other queries. Here are the steps to configure conditional forwarding on SRV1:

? On SRV1, open DNS Manager from the Administrative Tools menu or by typing dnsmgmt.msc in the Run box.

? In the left pane, right-click on Conditional Forwarders and select New Conditional Forwarder.

? In the New Conditional Forwarder dialog box, enter contoso.com as the DNS Domain name.

? In the IP addresses of the master servers box, enter the IP address of DC1, which is the DNS server for the contoso.com domain. You can also click on Resolve to verify the name resolution of DC1.

? Optionally, you can check the box Store this conditional forwarder in Active Directory, and replicate it as follows if you want to store and replicate the conditional forwarder in AD DS. You can also select the replication scope from the drop-down list.

? Click OK to create the conditional forwarder.

Now, SRV1 will forward any queries for the contoso.com domain to DC1, and use the root hint servers for any other queries. You can test the name resolution by using

the nslookup command on SRV1 or another computer that uses SRV1 as its DNS server. For example, you can run the following commands:

```
nslookup www.contoso.com nslookup www.microsoft.com
```

The first command should return the IP address of www.contoso.com from DC1, and the second command should return the IP address of www.microsoft.com from a root hint server.

## NEW QUESTION 3

SIMULATION - (Topic 4)

Task 4

You need to register SRV1 to sync Azure file shares The registration must use the 34646045 Storage Sync Service.

The required source files are located in a folder named \\dc1.contoso.com\install.

You do NOT need to configure file share synchronization at this time and you do NOT need to update the agent.

- A. Mastered
- B. Not Mastered

**Answer:** A

**Explanation:**

One possible solution to register SRV1 to sync Azure file shares using the 34646045 Storage Sync Service is to use the Register-AzStorageSyncServer cmdlet from the Az.StorageSync module. This cmdlet establishes a trust relationship between the server and the Storage Sync Service, which is required for creating server endpoints and syncing files. Here are the steps to register SRV1 using the cmdlet:

? On SRV1, open PowerShell as an administrator and run the following command to install the Az.StorageSync module if it is not already installed: `Install-Module -Name Az.StorageSync`  
? Run the following command to import the Az.StorageSync module:

`Import-Module -Name Az.StorageSync`

? Run the following command to sign in to your Azure account and select the subscription that contains the 34646045 Storage Sync Service:

`Connect-AzAccount`

`Select-AzSubscription -SubscriptionId <your-subscription-id>`

? Run the following command to register SRV1 with the 34646045 Storage Sync Service. You need to specify the resource group name and the Storage Sync Service name as parameters:

`Register-AzStorageSyncServer -ResourceGroupName <your-resource-group-name> -StorageSyncServiceName 34646045`

? Wait for the registration to complete. You can verify the registration status by checking the Registered servers tab on the Azure portal or by running the following command:

`Get-AzStorageSyncServer -ResourceGroupName <your-resource-group-name> -StorageSyncServiceName 34646045`

Now, SRV1 is registered with the 34646045 Storage Sync Service and ready to sync Azure file shares. You can create server endpoints on SRV1 and cloud endpoints on the Azure file shares to define the sync topology.

**NEW QUESTION 4**

SIMULATION - (Topic 4)

Task 6

You need to ensure that you can manage DC1 by using Windows Admin Center on SRV1. The required source files are located in a folder named \\dc1.contoso.com\install.

- A. Mastered
- B. Not Mastered

**Answer:** A

**Explanation:**

One possible solution to ensure that you can manage DC1 by using Windows Admin Center on SRV1 is to install Windows Admin Center on SRV1 and add DC1 as a managed server. Windows Admin Center is a web-based management tool that allows you to manage servers, clusters, Windows PCs, and Azure virtual machines (VMs) from a single interface. Here are the steps to install Windows Admin Center on SRV1 and add DC1 as a managed server:

? On SRV1, open a web browser and go to the folder named

\\dc1.contoso.com\install. Download the Windows Admin Center installer file (WindowsAdminCenter.msi) and save it to a local folder, such as C:\Temp.

? Run the Windows Admin Center installer file and follow the installation wizard. You

can choose to install Windows Admin Center as a desktop app or as a service. For more information on how to install Windows Admin Center, see Install Windows Admin Center.

? After the installation is complete, launch Windows Admin Center from the Start

menu or the desktop shortcut. If you installed Windows Admin Center as a service, you can access it from a web browser by using the URL `https://localhost:6516` or `https://<SRV1>:6516`, where <SRV1> is the name or IP address of SRV1.

? On the Windows Admin Center dashboard, click Add to add a new connection.

Select Server as the connection type and enter the name or IP address of DC1 in the Server name field. Optionally, you can specify the display name, description, and tags for the connection. Click Submit to add DC1 as a managed server.

? On the Windows Admin Center dashboard, you should see DC1 listed under the

Servers section. Click on DC1 to open the server overview page. From here, you can manage various aspects of DC1, such as roles and features, certificates, devices, events, files, firewall, processes, registry, services, and more. For more information on how to use Windows Admin Center to manage servers, see Manage servers with Windows Admin Center.

Now, you can manage DC1 by using Windows Admin Center on SRV1. You can also add more servers or other types of connections to Windows Admin Center and manage them from the same interface

**NEW QUESTION 5**

HOTSPOT - (Topic 3)

Your network contains an Active Directory Domain Services (AD DS) forest named contoso.com. The forest contains a child domain named east.contoso.com and the servers shown in the following table.

Name	Domain	Description
DC1	contoso.com	Has the schema master, infrastructure master, and domain naming master roles
DC2	east.contoso.com	Has the PDC emulator and RID master roles and is a global catalog server
Server1	contoso.com	Has the File Server, DFS Namespaces, and DFS Replication server roles

You need to create a folder for the Central Store to manage Group Policy template files for the entire forest.

What should you name the folder, and on which server should you create the folder? To answer, select the appropriate options in the answer area.

NOTE: Each correct selection is worth one point.

Answer Area

Name:

PolicyDefinitions

CentralDefinitions

PolicyDefinitions

TemplateDefinitions

These are the selections for Name:

Server:

Server1 only

DC1 only

DC2 only

Server1 only

DC1 and DC2 only

DC1, DC2, and Server1

- A. Mastered
- B. Not Mastered

Answer: A

Explanation:

Answer Area

Name:

PolicyDefinitions

CentralDefinitions

PolicyDefinitions

TemplateDefinitions

These are the selections for Name:

Server:

Server1 only

DC1 only

DC2 only

Server1 only

DC1 and DC2 only

DC1, DC2, and Server1

NEW QUESTION 6

HOTSPOT - (Topic 3)

You have a Windows Server container host named Server1.  
You start the containers on Server1 as shown in the following table.

Name	Image	Uses Hyper-V isolation	Process running on container
Container1	microsoft/iis	No	ProcessA
Container2	microsoft/iis	No	ProcessB
Container3	microsoft/iis	Yes	ProcessC
Container4	microsoft/iis	Yes	ProcessD

You need to validate the status of ProcessA and ProcessC.  
Where can you verify that ProcessA and ProcessC are in a running state? To answer, select the appropriate options in the answer area.  
NOTE: Each correct selection is worth one point.

Answer Area

ProcessA:

All the containers and Server1

Container1 only

Container1 and Container2 only

Container1 and Server1 only

Container1, Container2, and Server1 only

All the containers and Server1

ProcessC:

Container3 and Server1 only

Container3 only

Container3 and Container4 only

Container3 and Server1 only

Container3, Container4, and Server1 only

All the containers and Server1

- A. Mastered
- B. Not Mastered

Answer: A

Explanation:

Answer Area

ProcessA:

All the containers and Server1

ProcessC:

Container3 and Server1 only

NEW QUESTION 7

- (Topic 3)



Your network contains an Active Directory Domain Services (AD DS) domain named contoso.com. The domain contains two servers named Server1 and Server2. Server1 contains a disk named Disk2. Disk2 contains a folder named UserData. UserData is shared to the Domain Users group. Disk2 is configured for deduplication. Server1 is protected by using Azure Backup. Server1 fails. You connect Disk2 to Server2. You need to ensure that you can access all the files on Disk2 as quickly as possible. What should you do?

- A. Create a storage pool.
- B. Restore files from Azure Backup.
- C. Install the File Server Resource Manager server role.
- D. Install the Data Deduplication server role.

**Answer: C**

**Explanation:**

Reference:  
<https://docs.microsoft.com/en-us/windows-server/storage/data-deduplication/overview>

**NEW QUESTION 8**

- (Topic 3)

Note: This question is part of a series of questions that present the same scenario. Each question in the series contains a unique solution that might meet the stated goals. Some question sets might have more than one correct solution, while others might not have a correct solution.

After you answer a question in this section, you will NOT be able to return to it. As a result, these questions will not appear in the review screen.

Your network contains an Active Directory Domain Services (AD DS) forest. The forest contains three Active Directory sites named Site1, Site2, and Site3. Each site contains two domain controllers. The sites are connected by using DEFAULTIPSITELINK.

You open a new branch office that contains only client computers.

You need to ensure that the client computers in the new office are primarily authenticated by the domain controllers in Site1.

Solution: You create an organization unit (OU) that contains the client computers in the branch office. You configure the Try Next Closest Site Group Policy Object (GPO) setting in a GPO that is linked to the new OU.

Does this meet the goal?

- A. Yes
- B. No

**Answer: B**

**NEW QUESTION 9**

- (Topic 3)

You have a server that runs Windows Server and contains a shared folder named UserData.

You need to limit the amount of storage space that each user can consume in UserData. What should you use?

- A. Storage Spaces
- B. Work Folders
- C. Distributed File System (DFS) Namespaces
- D. File Server Resource Manager (FSRM)

**Answer: D**

**Explanation:**

Reference:  
<https://docs.microsoft.com/en-us/windows-server/storage/fsrm/fsrm-overview>

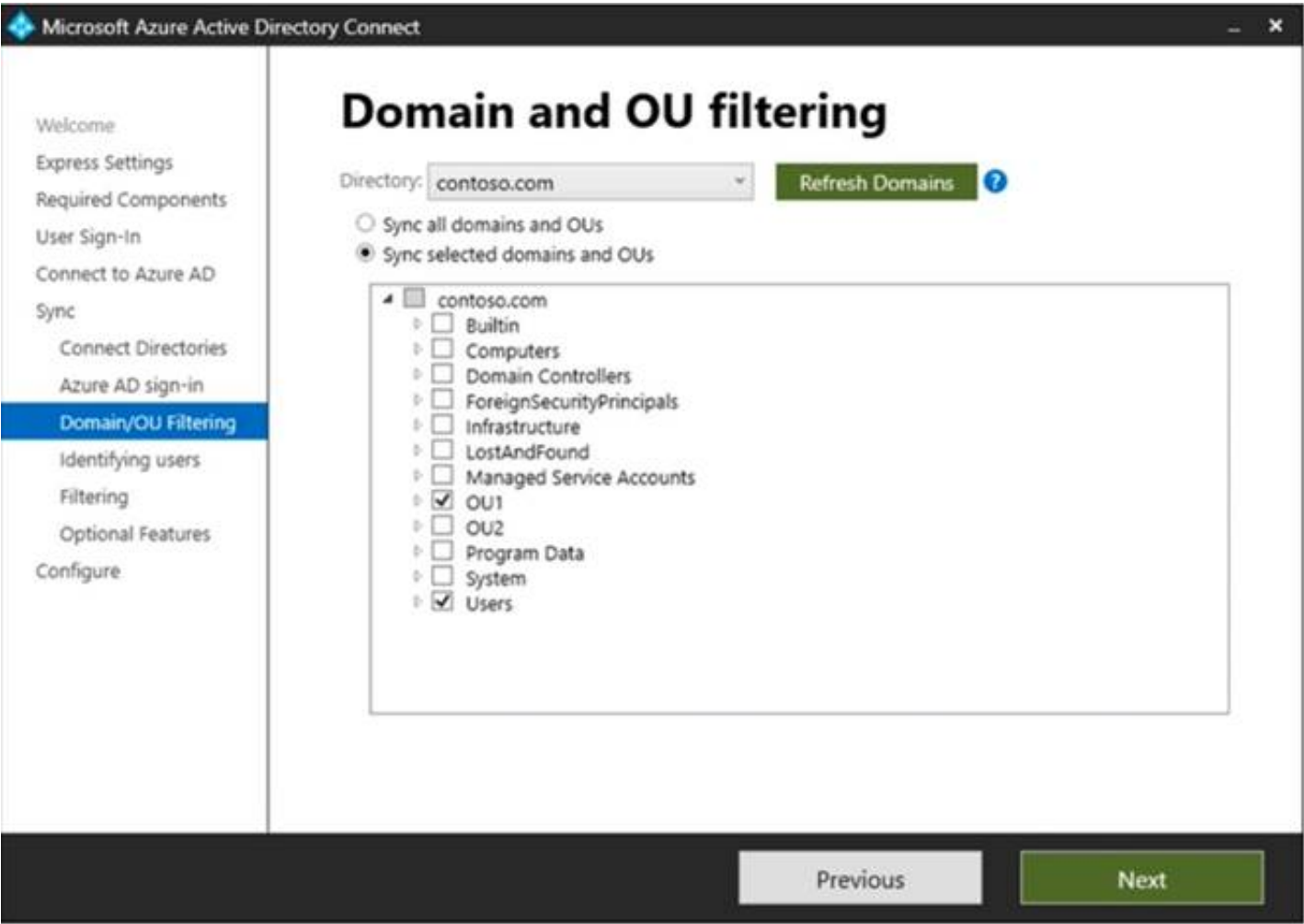
**NEW QUESTION 10**

HOTSPOT - (Topic 3)

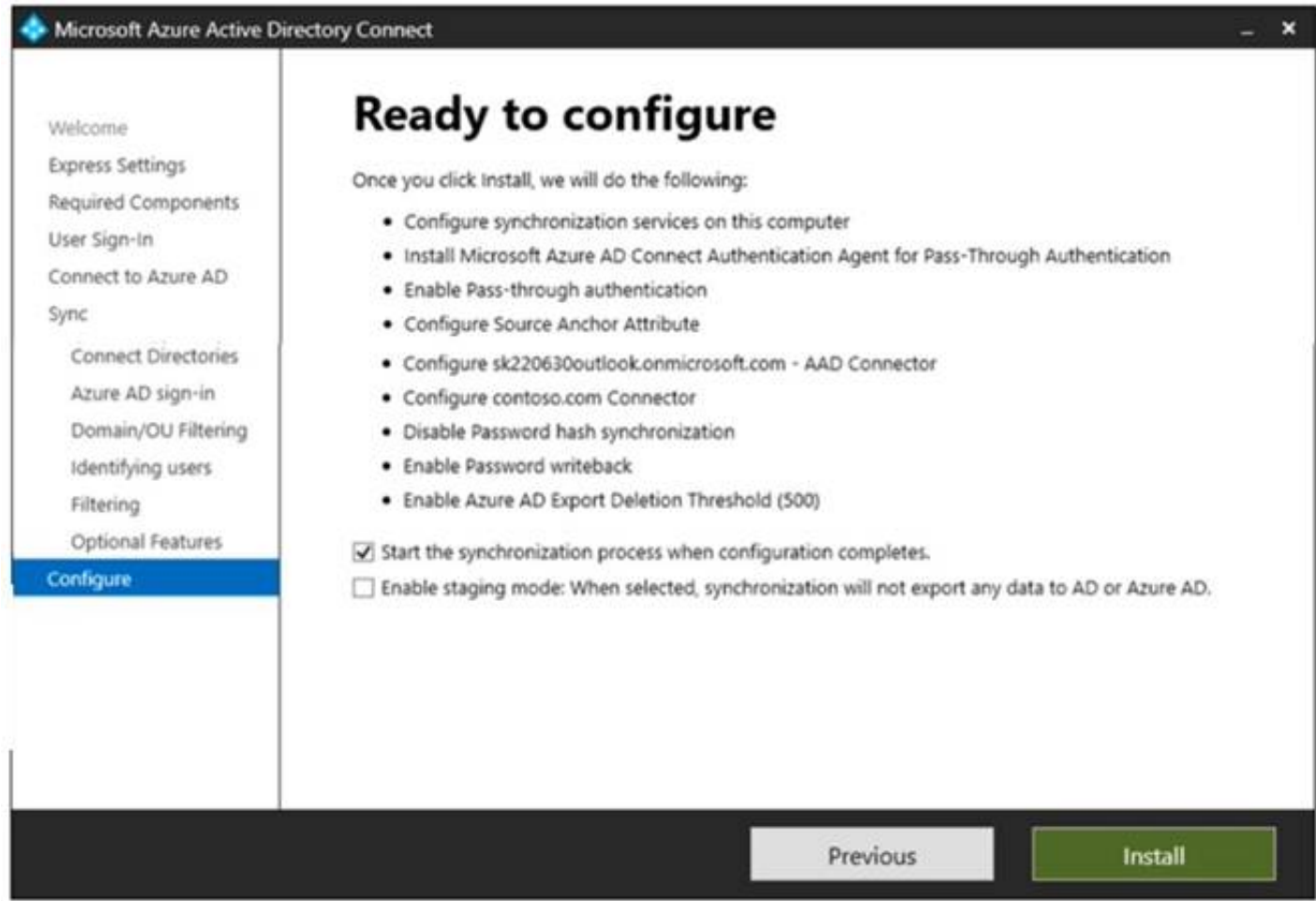
Your network contains an on-premises Active Directory Domain Services (AD DS) domain named contoso.com that syncs with an Azure AD tenant. The tenant contains a group named Group1 and the users shown in the following table.

Name	In organizational unit (OU)
User1	OU1
User2	OU2

Domain/OU filtering in Azure AD Connect is configured as shown in the Filtering exhibit. (Click the Filtering tab.)



You review the Azure AD Connect configurations as shown in the Configure exhibit. (Click the Configure tab.)



For each of the following statements, select Yes if the statement is true. Otherwise, select No. NOTE: Each correct selection is worth one point.

Answer Area

Statements	Yes	No
User1 can use self-service password reset (SSPR) to reset his password.	<input type="radio"/>	<input type="radio"/>
If User1 connects to Microsoft Exchange Online, an on-premises domain controller provides authentication.	<input type="radio"/>	<input type="radio"/>
You can add User2 to Group1 as a member.	<input type="radio"/>	<input type="radio"/>

- A. Mastered
- B. Not Mastered

Answer: A

Explanation:

Answer Area

Statements	Yes	No
User1 can use self-service password reset (SSPR) to reset his password.	<input type="radio"/>	<input checked="" type="radio"/>
If User1 connects to Microsoft Exchange Online, an on-premises domain controller provides authentication.	<input type="radio"/>	<input checked="" type="radio"/>
You can add User2 to Group1 as a member.	<input type="radio"/>	<input checked="" type="radio"/>

NEW QUESTION 10

HOTSPOT - (Topic 3)

Your on-premises network contains a server named Server1 and uses an IP address space of 192.168.10.0/24.

You have an Azure virtual network that contains a subnet named Subnet1. Subnet1 uses an IP address space of 192.168.10.0/24.

You need to migrate Server1 to Subnet1. You must use Azure Extended Network to maintain the existing IP address of Server1.

What is the minimum number of virtual machines that you should deploy? To answer, select the appropriate options in the answer area.

NOTE: Each correct selection is worth one point

Answer Area

Virtual machines that run Windows Server 2022 Azure Edition:

Virtual machines that run Windows Server 2019 or Windows Server 2022:

- A. Mastered
- B. Not Mastered

Answer: A

Explanation:

Answer Area

Virtual machines that run Windows Server 2022 Azure Edition:

Virtual machines that run Windows Server 2019 or Windows Server 2022:

NEW QUESTION 15

- (Topic 3)

You have an Azure virtual machine named VM1 that runs Windows Server and has the following configurations:

- ? Size: D2s\_v4
  - ? Operating system disk: 127-GiB standard SSD
  - ? Data disk 128-GiB standard SSD
  - ? Virtual machine generation: Gen 2
- You plan to perform the following changes to VM1:
- ? Change the virtual machine size to D4s\_v4.
  - ? Detach the data disk.
  - ? Add a new standard SSD.
- Which changes require downtime for VM1?

- A. Detaching the data disk only and adding a new standard SSD.
- B. Detaching the data disk only.
- C. Changing the virtual machine size only.
- D. Adding a new standard SSD only.

Answer: C

Explanation:

Data disks can be added and detached without requiring downtime. Changing the VM size requires the VM to be restarted.

NEW QUESTION 20

- (Topic 3)

You have a Windows Server container host named Server 1 and a container image named Image1.

You need to start a container from image1. The solution must run the container on a Hyper- V virtual machine.

Which parameter should you specify when you run the docker run command?

- A. --expose

- B. --privileged
- C. --runtime
- D. --entrypoint
- E. --isolation

**Answer:** D

**Explanation:**

Reference:  
<https://docs.microsoft.com/en-us/virtualization/windowscontainers/manage-containers/hyperv-container>

**NEW QUESTION 25**

DRAG DROP - (Topic 3)

Your network contains a single domain Active Directory Domain Services (AD DS) forest named contoso.com. The forest contains a single Active Directory site. You plan to deploy a read only domain controller (RODC) to a new datacenter on a server named Server1. A user named User1 is a member of the local Administrators group on Server1.

You need to recommend a deployment plan that meets the following requirements:

- ? Ensures that a user named User1 can perform the RODC installation on Server1
- ? Ensures that you can control the AD DS replication schedule to the Server1
- ? Ensures that Server1 is in a new site named RemoteSite1
- ? Uses the principle of least privilege

Which three actions should you recommend performing in sequence? To answer, move the appropriate actions from the list of actions to the answer area and arrange them in the correct order.

Actions

Instruct User1 to run the Active Directory Domain Services installation Wizard on Server1.

Create a site and a subnet.

Create a site link.

Pre-create an RODC account.

Add User1 to the Contoso\Administrators group.

Answer Area

>

<

- A. Mastered
- B. Not Mastered

**Answer:** A

**Explanation:**

Box 1.  
We need to create a site and subnet for the remote site. The new site will be added to the Default IP Site Link so we don't need to create a new site link. You configure the replication schedule on the site link.  
Box 2.  
When we pre-create an RODC account, we can specify who is allowed to attach the server to the prestaged account. This means that the User1 does not need to be added to the Domain Admins group.  
Box3.  
User1 can connect the RODC to the prestaged account by running the AD DS installation wizard.

**NEW QUESTION 28**

- (Topic 3)

Your network contains a DHCP server. You plan to add a new subnet and deploy Windows Server to the subnet. You need to use the server as a DHCP relay agent. Which role should you install on the server?

- A. Network Policy and Access Services
- B. Remote Access
- C. Network Controller
- D. DHCP Server

**Answer:** B

**NEW QUESTION 33**

- (Topic 3)

Your network contains a single-domain Active Directory Domain Services (AD DS) forest named conto.com. The forest contains the servers shown in the following exhibit table.



Name	Description
DC1	Domain controller
Server1	Member server

You plan to install a line-of-business (LOB) application on Server1. The application will install a custom windows services.

A new corporate security policy states that all custom Windows services must run under the context of a group managed service account (gMSA). You deploy a root key.

You need to create, configure, and install the gMSA that will be used by the new application.

Which two actions should you perform? Each correct answer presents part of the solution. NOTE: Each correct selection is worth one point.

- A. On Server1, run the install-ADServiceAccount cmdlet.
- B. On DC1, run the New-ADServiceAccount cmdlet.
- C. On DC1, run the Set\_ADComputer cmdlet.
- D. ON DC1, run the Install-ADServiceAccount cmdlet.
- E. On Server1, run the Get-ADServiceAccount cmdlet.

**Answer:** AB

#### NEW QUESTION 34

- (Topic 3)

You have an on-premises Active Directory Domain Services (AD DS) domain named contoso.com that syncs with Azure AD by using A2zure AD Connect.

You enable password protection for contoso.com.

You need to prevent users from including the word Contoso as part of their password. What should you use?

- A. the Azure Active Directory admin center
- B. Active Directory Users and Computers
- C. Synchronization Service Manager
- D. Windows Admin Center

**Answer:** D

#### NEW QUESTION 36

- (Topic 3)

Note: This question is part of a series of questions that present the same scenario. Each question in the series contains a unique solution that might meet the stated goals. Some question sets might have more than one correct solution, while others might not have a correct solution.

After you answer a question in this section, you will NOT be able to return to it. As a result, these questions will not appear in the review screen.

Your network contains an Active Directory Domain Services (AD DS) forest. The forest contains three Active Directory sites named Site1, Site2, and Site3. Each site contains two domain controllers. The sites are connected by using DEFAULTIPSITELINK.

You open a new branch office that contains only client computers.

You need to ensure that the client computers in the new office are primarily authenticated by the domain controllers in Site1.

Solution: You create a new site named Site4 and associate Site4 to DEFAULTSITELINK. Does this meet the goal?

- A. Yes
- B. No

**Answer:** B

#### NEW QUESTION 38

HOTSPOT - (Topic 3)

Your network contains an Active Directory Domain Services (AD DS) domain. The domain contains the domain controllers shown in the following table.

Name	Description
DC1	Has the schema master, infrastructure master, and domain naming master roles
DC2	Has the PDC emulator and RID master roles and is a global catalog server
DC3	None

You need to configure DC3 to be the authoritative time server for the domain.

Which operations master role should you transfer to DC3, and which console should you use? To answer, select the appropriate options in the answer area.

NOTE: Each correct selection is worth one point.

**Answer Area**

Role: PDC emulator

Domain naming master

Infrastructure master

PDC emulator

RID master

Schema master

Console: Active Directory Users and Computers

Active Directory Admin

Active Directory Doma

Active Directory Sites (Active Directory Sites and Services)

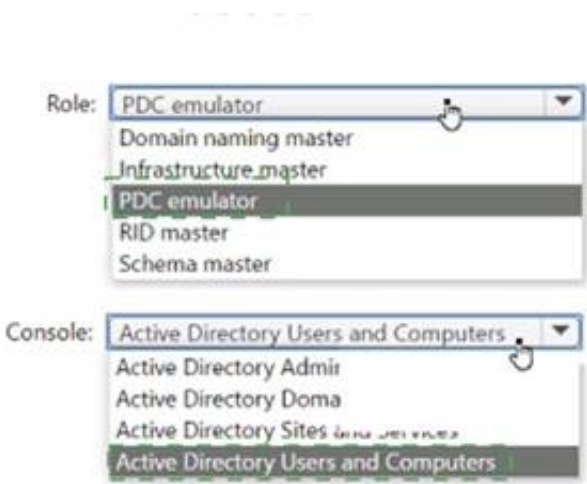
Active Directory Users and Computers

- A. Mastered
- B. Not Mastered

Answer: A

Explanation:

Answer Area



NEW QUESTION 42

- (Topic 3)  
You have an Azure virtual machine named VM1 that runs Windows Server. You perform the following actions on VM1:

- Create a folder named Folder1 on volume C
- Create a folder named Folder2 on volume D.
- Add a new data disk to VM1 and create a new volume that is assigned drive letter E.
- Install an app named App1 on volume E. You plan to resize VM1.

Which objects will present after you resize VM1?

- A. Folded and Folder2 only
- B. Folder1, volume E, and App1 only
- C. Folder1 only
- D. Folde
- E. Folder2. App1, and volume E

Answer: D

NEW QUESTION 47

- (Topic 3)  
Your network contains an Active Directory Domain Services (AD DS) domain named conioso.com.  
You need to identify which server is the PDC emulator for the domain.  
Solution: from Active Directory Users and Computers, you right-click contoso.com in the console tree, and then select Operations Master  
Does this meet the goal?

- A. Yes
- B. No

Answer: A

NEW QUESTION 48

DRAG DROP - (Topic 3)  
You create a new Azure subscription.  
You plan to deploy Azure Active Directory Domain Services (Azure AD DS) and Azure virtual machines. The virtual machines will be joined to Azure AD DS.  
You need to deploy Active Directory Domain Services (AD DS) to ensure that the virtual machines can be deployed and joined to Azure AD DS.  
Which three actions should you perform in sequence? To answer, move the appropriate actions from the list of actions to the answer area and arrange them in the correct order.

Actions

Answer Area

Modify the settings of the Azure virtual network.

Install the Active Directory Domain Services role.

Install Azure AD Connect.

Create an Azure virtual network.

Create an Azure AD DS instance.

Run the Active Directory Domain Service installation Wizard.

>

<

A. Mastered

B. Not Mastered

**Answer:** A

**Explanation:**

**Actions**

Modify the settings of the Azure virtual network.

Install the Active Directory Domain Services role.

Install Azure AD Connect.

Create an Azure virtual network.

Create an Azure AD DS instance.

Run the Active Directory Domain Service installation Wizard.

**Answer Area**

Create an Azure virtual network.

Create an Azure AD DS instance.

>

Modify the settings of the Azure virtual network.

<

**NEW QUESTION 53**

- (Topic 3)  
You have a server named Server1 that runs Windows Server.  
You plan to host applications in Windows containers.  
You need to configure Server1 to run containers. What should you install?

- A. Windows Admin Center
- B. the Windows Subsystem for Linux
- C. Docker
- D. Hyper-V

**Answer:** C

**NEW QUESTION 57**

HOTSPOT - (Topic 3)  
Your network contains an Active Directory Domain Services (AD DS) domain named contoso.com.  
The network contains the servers shown in the following table.

Name	Role	Domain/workgroup	Operating system
DC1	Active Directory Domain Services, DNS Server	contoso.com	Windows Server
Server1	DHCP Server	contoso.com	Windows Server
Server2	None	contoso.com	Windows Server Core
Server3	None	Workgroup1	Windows Server Core

You plan to implement IP Address Management (IPAM).  
You need to use the Group Policy based provisioning method for managed servers. The solution must support server discovery.  
What should you do? To answer, select the appropriate options in the answer area. NOTE: Each correct selection is worth one point.

**Answer Area**

Server on which to deploy the IPAM server role: 

Server2

DC1

Server1

Server2

Server3

Servers that must be provisioned for IPAM: 

DC1 and Server1

DC1 and Server1

DC1 and Server3

Server1 and Server2

Server2 and Server3

- A. Mastered
- B. Not Mastered

**Answer:** A

**Explanation:**

**Answer Area**

Server on which to deploy the IPAM server role: 

Server2

Servers that must be provisioned for IPAM: 

DC1 and Server1

**NEW QUESTION 62**

- (Topic 3)



You have an on-premises server named Server1 that runs Windows Server. You have an Azure virtual network that contains an Azure virtual network gateway. You need to connect only Server1 to the Azure virtual network. What should you use?

- A. Azure Network Adapter
- B. a Site-to-Site VPN
- C. an ExpressRoute circuit
- D. Azure Extended Network

**Answer: B**

**Explanation:**

Reference:

<https://docs.microsoft.com/en-us/windows-server/manage/windows-admin-center/azure/use-azure-network-adapter>

**NEW QUESTION 64**

- (Topic 3)

You have an Azure virtual machine named Served that runs a network management application. Server1 has the following network configurations:

- Network interface: Nic1
- IP address. 10.1.1.1/24
- Connected to: VnetVSubnet1

You need to connect Server1 to an additional subnet named Vnet1/Subnet2. What should you do?

- A. Modify the IP configurations of Nic1.
- B. Add a network interface to Server1.
- C. Add an IP configuration to Nic1.
- D. Create a private endpoint on Subnet2

**Answer: D**

**NEW QUESTION 68**

- (Topic 3)

Your network contains an Active Directory Domain Services (AD DS) domain. The domain contains a user named User1 and the servers shown in the following table.

Name	Server role	DHCP scope
Server1	DHCP Server	Scope1, Scope2
Server2	DHCP Server	Scope3, Scope4

You need to ensure that User1 can manage only Scope1 and Scope3. What should you do?

- A. Add User1 to the DHCP Administrators group on Server1 and Server2.
- B. Implement IP Address Management (IPAM).
- C. Add User1 to the DHCP Administrators domain local group.
- D. Implement Windows Admin Center and add connections to Server1 and Server2.

**Answer: B**

**NEW QUESTION 72**

- (Topic 3)

Your network contains an Active Directory Domain Services (AD DS) domain.

You have a Group Policy Object (GPO) named GPO1 that contains Group Policy preferences.

You plan to link GPO1 to the domain.

You need to ensure that the preference in GPO1 apply only to domain member servers and NOT to domain controllers or client computers. All the other Group Policy settings in GPO1 must apply to all the computers. The solution must minimize administrative effort.

Which type of item level targeting should you use?

- A. Domain
- B. Operating System
- C. Security Group
- D. Environment Variable

**Answer: B**

**Explanation:**

Reference:

[https://docs.microsoft.com/en-us/previous-versions/windows/it-pro/windows-server-2012-r2-and-2012/dn789189\(v=ws.11\)#operating-system-targeting](https://docs.microsoft.com/en-us/previous-versions/windows/it-pro/windows-server-2012-r2-and-2012/dn789189(v=ws.11)#operating-system-targeting)

**NEW QUESTION 75**

HOTSPOT - (Topic 3)

You need to sync files from an on-premises server named Server1 to Azure by using Azure File Sync

You have a cloud tiering policy that is configured for 30 percent free space and 70 days. Volume f on Server1 is 500 GB.

A year ago, you configured E:\Oata on Server1 to sync by using Azure File Sync. The files that are visible in E:\Data are shown in the following table.



Name	Size	Last accessed
File1	200 GB	2 days ago
File2	100 GB	10 days ago
File3	200 GB	60 days ago
File4	50 GB	100 days ago

Volume E does NOT contain any other files.  
Where are File1 and file3 located? To answer, select the appropriate options In the answer area.

Answer Area

File1:

Server1 only  
The Azure file share only  
Server1 and the Azure file share

File3:

Server1 only  
The Azure file share only  
Server 1 and the Azure file share

- A. Mastered
- B. Not Mastered

Answer: A

Explanation:

Answer Area

File1:

Server1 only

The Azure file share only

Server1 and the Azure file share

File3:

Server1 only

The Azure file share only

Server 1 and the Azure file share

NEW QUESTION 77

- (Topic 3)  
Your network contains a Active Directory Domain Service (AD DS) forest named contoso.com. The forest root domain contains a server named server1. contoso.com.  
A two-way forest trust exists between the contoso.com forest and an AD DS forest named fabrikam.com. The fabrikam.com forest contains 10 child domains.  
You need to ensure that only the members of a group named fabrikam\Group1 can authenticate to server1.contoso.com.  
What should you do first?

- A. Change the trust to a one-way external trust.
- B. Add fabrikam\Group1 to the local Users group on server1.contoso.com.
- C. Enable SID filtering for the trust.
- D. Enable Selective authentication for the trust.

Answer: B

NEW QUESTION 81

- (Topic 3)  
You have an on-premises Active Directory Domain Services (AD DS) domain that syncs with an Azure Active Directory (Azure AD) tenant  
You have several Windows 10 devices that are Azure AD hybrid-joined.  
You need to ensure that when users sign in to the devices, they can use Windows Hello for Business.  
Which optional feature should you select in Azure AD Connect?

- A. Device writeback
- B. Group writeback
- C. Password writeback
- D. Directory extension attribute sync
- E. Azure AD app and attribute filtering

Answer: C

Explanation:

Reference:  
<https://docs.microsoft.com/en-us/windows/security/identity-protection/hello-for-business/hello-hybrid-cert-trust-prereqs>

NEW QUESTION 85

- (Topic 3)  
Note: This question is part of a series of questions that present the same scenario. Each question in the series contains a unique solution that might meet the stated goals. Some question sets might have more than one correct solution, while others might not have a correct solution. After you answer a question in this section, you will NOT be able to return to it. As a result, these questions will not appear in the review screen.  
You are planning the deployment of DNS to a new network.  
You have three internal DNS servers as shown in the following table.

Name	Location	IP address	Local DNS zone
Server1	Montreal	10.0.1.10	contoso.local
Server2	Toronto	10.0.2.10	east.contoso.local
Server3	Seattle	10.0.3.10	west.contoso.local

The contoso.local zone contains zone delegations for east.contoso.local and west.contoso.local. All the DNS servers use root hints.

You need to ensure that all the DNS servers can resolve the names of all the internal namespaces and internet hosts.

Solution: On Server2, you create a conditional forwarder for contoso.local and west.contoso.local. On Server3, you create a conditional forwarder for contoso.local and east.contoso.local.

Does this meet the goal?

- A. Yes
- B. No

**Answer:** B

#### NEW QUESTION 90

- (Topic 3)

You have an Azure Active Directory Domain Services (Azure AD DS) domain named contoso.com.

You need to provide an administrator with the ability to manage Group Policy Objects (GPOs). The solution must use the principle of least privilege.

To which group should you add the administrator?

- A. AAD DC Administrators
- B. Domain Admins
- C. Schema Admins
- D. Enterprise Admins
- E. Group Policy Creator Owners

**Answer:** B

#### Explanation:

Only the Domain Admins group and the Enterprise Admins group can fully manage GPOs. Members of the Group Policy Creator Owners group can create new GPOs but they can't link the GPOs to sites, the domain or OUs and they cannot manage existing GPOs.

#### NEW QUESTION 92

- (Topic 3)

Your network contains an Active Directory Domain Services (AD DS) domain. The domain contains the offices shown in the following table.

Location	Number of VPN servers	Number of remote users
Boston	2	30
Dallas	2	50
Seattle	4	100

You need to deploy a Network Policy Server (NPS) named NPS1 to enforce network access policies for all remote connections.

What is the minimum number of RADIUS clients that you should add to NPS1?

- A. 1
- B. 3
- C. 8
- D. 180
- E. 188

**Answer:** C

#### NEW QUESTION 94

- (Topic 3)

Your network contains an Active Directory forest. The forest contains two domains named contoso.com and east.contoso.com and the servers shown in the following table.

Name	Domain	Configuration
DC1	contoso.com	Domain controller
Server1	contoso.com	Member server
DC2	east.contoso.com	Domain controller
Server2	east.contoso.com	Member server

Contoso.com contains a user named User1.

You add User1 to the built-in Backup Operators group in contoso.com. Which servers can User1 back up?

- A. DC1 only
- B. Server1 only
- C. DC1 and DC2 only
- D. DC1 and Server1 only
- E. DC1, DC2, Server1, and Server2

**Answer:** A

**NEW QUESTION 96**

- (Topic 3)

Your network contains an Active Directory Domain Services (AD DS) domain.

You plan to use Active Directory Administrative Center to create a new user named User1. Which two attributes are required to create User1? Each correct answer presents part of the solution.

NOTE: Each correct selection is worth one point.

- A. Password
- B. Profile path
- C. User SamAccountName logon
- D. Full name
- E. First name
- F. User UPN logon

**Answer:** AC

**NEW QUESTION 99**

- (Topic 3)

You have five file servers that run Windows Server.

You need to block users from uploading video files that have the .mov extension to shared folders on the file servers. All other types of files must be allowed. The solution must minimize administrative effort.

What should you create?

- A. a Dynamic Access Control central access policy
- B. a file screen
- C. a Dynamic Access Control central access rule
- D. a data loss prevention (DLP) policy

**Answer:** B

**Explanation:**

Reference:

<https://docs.microsoft.com/en-us/windows-server/storage/fsrm/file-screening-management>

**NEW QUESTION 104**

HOTSPOT - (Topic 3)

You have a Windows Server 2022 container host named Host1 and a container registry that contains the container images shown in the following table.

Name	Container base image OS version
Image1	Windows Server 2022
Image2	Windows Server 2019

You need to run the containers on Host1

Which isolation mode can you use for each image? To answer, select the appropriate options in the answer area.

NOTE: Each correct selection is worth one point.

**Answer Area**

Image1:

Image2:

**Answer:**

**Answer Area**

Image1:

Image2:

- A. Mastered
- B. Not Mastered

**Answer:** A

**NEW QUESTION 106**

- (Topic 3)

Your network contains an Active Directory Domain Services (AD DS) domain named contoso.com.

You need to identify which server is the PDC emulator for the domain. Solution: From a command prompt, you run netdom.exe query fsmo. Does this meet the goal?

- A. Yes
- B. No

**Answer:** A

**Explanation:**

Reference:

<https://activedirectorypro.com/how-to-check-fsmo-roles/>

**NEW QUESTION 109**

- (Topic 3)

You have an Azure subscription that contains the storage accounts shown in the following table.

Name	Location	File share	Blob container
storage1	West US	share1	None
storage2	West US	share2	container2
storage3	Central US	share3	None
storage4	Central US	share4	container4

In the West US Azure region, you create a storage sync service named SyncA. You plan to create a sync group named GroupA. What is the maximum number of cloud endpoints you can use with GroupA?

- A. 1
- B. 2
- C. 3
- D. 4

**Answer:** B

**NEW QUESTION 111**

HOTSPOT - (Topic 3)

You have on-premises file servers that run Windows Server as shown in the following table.

Name	Relevant folder
Server1	D:\Folder1, E:\Folder2
Server2	D:\Data

You have the Azure file shares shown in the following table.

Name	Location
share1	East US
share2	East US

You add a Storage Sync Service named Sync1 and an Azure File Sync sync group named Group1. Group1 uses share1 as a cloud endpoint.

You register Server1 and Server2 with Sync1. You add D:\Folder1 from Server1 as a server endpoint in Group1.

For each of the following statements, select Yes if the statement is true. Otherwise, select No.

NOTE: Each correct selection is worth one point.

Statements	Yes	No
You can add share2 as a cloud endpoint in Group1.	<input type="checkbox"/>	<input type="checkbox"/>
You can add E:\Folder2 from Server1 as a server endpoint in Group1.	<input type="checkbox"/>	<input type="checkbox"/>
You can add D:\Data from Server2 as a server endpoint in Group1.	<input type="checkbox"/>	<input type="checkbox"/>

A. Mastered



B. Not Mastered

Answer: A

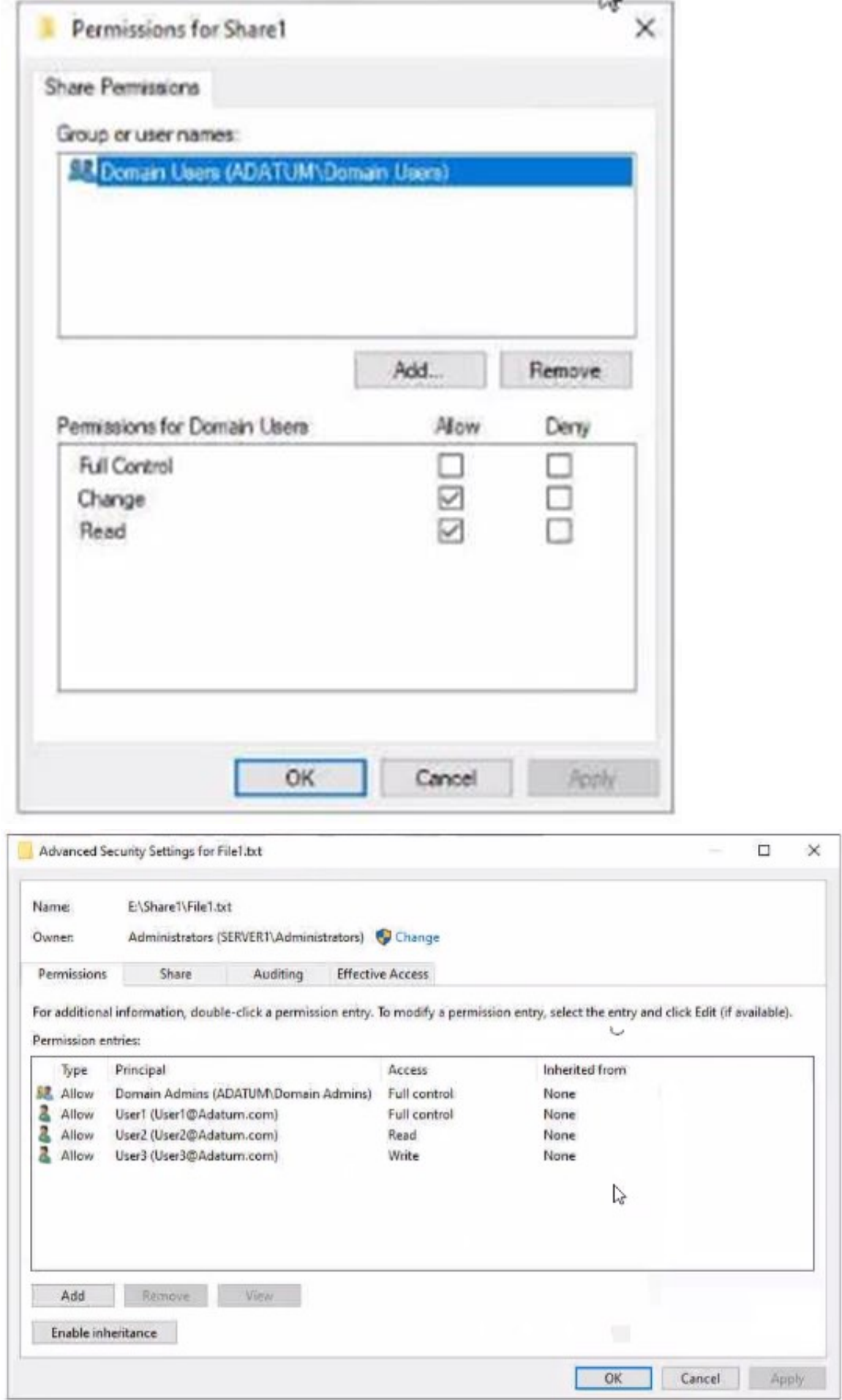
Explanation:

Statements	Yes	No
You can add share2 as a cloud endpoint in Group1.	<input type="radio"/>	<input checked="" type="radio"/>
You can add E:\Folder2 from Server1 as a server endpoint in Group1.	<input checked="" type="radio"/>	<input type="radio"/>
You can add D:\Data from Server2 as a server endpoint in Group1.	<input checked="" type="radio"/>	<input type="radio"/>

NEW QUESTION 112

HOTSPOT - (Topic 3)

Your network contains an Active Directory Domain Services (AD DS) domain named adatum.com.



The domain contains a 'He server named Server1 and three users named User1. User2 and User), Server1 contains a shared folder named Share1 tha1 has the following configurations:

ShareState : Online  
AvailabilityType : NonClustered  
FolderEnumerationMode : AccessBased  
CachingMode : Manual  
LeasingMode : Full  
SubInstance : Default  
CompressData : False  
ContinuouslyAvailable : False  
EncryptData : False  
Name : Share1  
Path : E:\Share1  
ShadowCopy : False

The share permissions for Share1 are configured as shown in the Share Permissions exhibit. (Click the Share Permissions tab.)  
Share! contains a file named File1.txt. The advanced security settings for File1.txt are configured as shown in the File Permissions exhibit. (Click the File Permissions tab.)  
For each of the following statements, select Yes if the statement is true. Otherwise, select No.  
NOTE: f ach correct selection is worth one point.

Answer Area

Statements	Yes	No
When User1 connects to \\Server1.adatum.com\Share1\, the user can take ownership of File1.txt.	<input type="radio"/>	<input type="radio"/>
When User2 connects to \\Server1.adatum.com\Share1\, File1.txt is visible.	<input type="radio"/>	<input type="radio"/>
When User3 connects to \\Server1.adatum.com\Share1\, File1.txt is visible.	<input type="radio"/>	<input type="radio"/>

- A. Mastered
- B. Not Mastered

Answer: A

Explanation:

Answer Area

Statements	Yes	No
When User1 connects to \\Server1.adatum.com\Share1\, the user can take ownership of File1.txt.	<input type="radio"/>	<input checked="" type="radio"/>
When User2 connects to \\Server1.adatum.com\Share1\, File1.txt is visible.	<input checked="" type="radio"/>	<input type="radio"/>
When User3 connects to \\Server1.adatum.com\Share1\, File1.txt is visible.	<input type="radio"/>	<input checked="" type="radio"/>

NEW QUESTION 115

- (Topic 3)  
You have an on-premises Active Directory Domain Services (AD DS) domain that syncs with an Azure Active Directory (Azure AD) tenant. You plan deploy 100 new Azure virtual machines that will run Windows Server. You need to ensure that each new virtual machine is joined to the AD DS domain. What should you use?

- A. Azure AD Connect
- B. a Group Policy Object (GPO)
- C. an Azure Resource Manager (ARM) template
- D. an Azure management group

Answer: C

Explanation:

Reference:  
<https://www.ludovicmedard.com/create-an-arm-template-of-a-virtual-machine-automatically-joined-to-a-domain/>

NEW QUESTION 120

HOTSPOT - (Topic 3)  
Your network contains an Active Directory Domain Services (AD DS) domain named contoso.com. The domain contains the VPN servers shown in the following table.

Name	IP address
VPN1	172.16.0.254
VPN2	131.10.15.254
VPN3	10.10.0.254

You have a server named NPS1 that has Network Policy Server (NPS) installed. NPS1 has the following RADIUS clients:

Name : NPSclient1  
Address : 172.16.0.254  
AuthAttributeRequired : False  
SharedSecret : Pa55w.rd  
VendorName : RADIUS Standard  
Enabled : False

Name : NPSclient2  
Address : 131.10.15.254  
AuthAttributeRequired : False  
SharedSecret : Pa55w.rd  
VendorName : RADIUS Standard  
Enabled : True

Name : NPSclient3  
Address : 172.16.1.254  
AuthAttributeRequired : False  
SharedSecret : Pa55w.rd  
VendorName : RADIUS Standard  
Enabled : True

VPN1, VPN2, and VPN3 use NPS1 for RADIUS authentication. All the users in contoso.com are allowed to establish VPN connections. For each of the following statements, select Yes If the statement is true. Otherwise, select No. NOTE: Each correct selection is worth one point.

Answer Area

Statements	Yes	No
The contoso.com users can authenticate successfully when they establish a VPN connection to VPN1.	<input type="radio"/>	<input type="radio"/>
The contoso.com users can authenticate successfully when they establish a VPN connection to VPN2.	<input type="radio"/>	<input type="radio"/>
The contoso.com users can authenticate successfully when they establish a VPN connection to VPN3.	<input type="radio"/>	<input type="radio"/>

- A. Mastered
- B. Not Mastered

Answer: A

Explanation:

Answer Area

Statements	Yes	No
The contoso.com users can authenticate successfully when they establish a VPN connection to VPN1.	<input type="radio"/>	<input checked="" type="radio"/>
The contoso.com users can authenticate successfully when they establish a VPN connection to VPN2.	<input checked="" type="radio"/>	<input type="radio"/>
The contoso.com users can authenticate successfully when they establish a VPN connection to VPN3.	<input type="radio"/>	<input checked="" type="radio"/>

NEW QUESTION 124

HOTSPOT - (Topic 3)

You have an Azure subscription that contains the virtual machines shown in the following table.

Name	Operating system
VM1	Windows Server 2022 Datacenter: Azure Edition
VM2	Windows Server 2022 Datacenter: Azure Edition Core
VM3	Windows Server 2022 Datacenter
VM4	Windows Server 2019 Datacenter

You plan to implement Azure Automanage for Windows Server. You need to identify the operating system prerequisites. Which virtual machines support Hotpatch, and which virtual machines support SMB over QUIC? To answer select the appropriate options in the answer area. NOTE: Each correct selection is worth one point.

Answer Area

Hotpatch: 

VM1 and VM2 only

VM1 only

VM2 only

VM1 and VM2 only

VM1, VM2, and VM3 only

VM1, VM2, VM3, and VM4

SMB over QUIC: 

VM1 only

VM1 only

VM2 only

VM1 and VM2 only

VM1, VM2, and VM3 only

VM1, VM2, VM3, and VM4

- A. Mastered
- B. Not Mastered

Answer: A

Explanation:

Answer Area

Hotpatch: 

VM1 and VM2 only

VM1 only

VM2 only

VM1 and VM2 only

VM1, VM2, and VM3 only

VM1, VM2, VM3, and VM4

SMB over QUIC: 

VM1 only

VM1 only

VM2 only

VM1 and VM2 only

VM1, VM2, and VM3 only

VM1, VM2, VM3, and VM4

NEW QUESTION 125

HOTSPOT - (Topic 3)

You have a server named Server1 that runs Windows Server Server1 has a just-a-bunch- of-disks (JBOD) enclosure attached. You plan to create a storage pool on Server1 and a virtual disk that will use a mirror layout. You are considering whether to use a two-way or a three-way mirror layout.

What is the minimum number of disks required for each type of minor layout? To answer, select the appropriate options in the answer area.

NOTE: Each correct selection is worth one point.

Answer Area

Two-way mirror: 

1

2

3

4

5

6

Three-way mirror: 

1

2

3

4

5

6

- A. Mastered
- B. Not Mastered

Answer: A

Explanation:



Answer Area



#### NEW QUESTION 127

- (Topic 3)

You have an on premises Active Directory Domain Services (AD DS) domain that syncs with an Azure Active Directory (Azure AD) tenant. The domain contains two servers named Server1 and Server2.

A user named Admin1 is a member of the local Administrators group on Server1 and Server2.

You plan to manage Server1 and Server2 by using Azure Arc. Azure Arc objects will be added to a resource group named RG1.

You need to ensure that Admin1 can configure Server1 and Server2 to be managed by using Azure Arc.

What should you do first?

- A. Mastered
- B. Not Mastered

**Answer:** A

#### Explanation:

Reference:

<https://docs.microsoft.com/en-us/azure/azure-arc/servers/onboard-service-principal>

#### NEW QUESTION 128

- (Topic 3)

Your network contains an Active Directory Domain Services (AD DS) domain. The domain contains the resources shown in the following table.

Name	Description
CLIENT1	Client computer that runs Windows
DC1	Domain controller
Server1	File server
Server2	File server

You plan to replicate a volume from Server1 to Server2 by using Storage Replica. You need to configure Storage Replica.

Where should you install Windows Admin Center?

- A. Server 1
- B. CLIENT1
- C. DC1
- D. Server2

**Answer:** A

#### NEW QUESTION 129

- (Topic 3)

You have a server named Server1 that runs Windows Server and contains two drives named C and D. Server1 hosts multiple file shares.

You enable Data Deduplication on drive D and select the General purpose file server workload.

You need to minimize the space consumed by files that were recently modified or deleted. What should you do?

- A. Run the set-dedupvolume cmdlet and configure the scrubbing job.
- B. Run the Set-DedupSchedule Cmdlet and configure a GarbageCollection job.
- C. Run the set-Dedupvoiume cmdlet and configure the InputOutputScale settings.
- D. Run the Set-DedupSchedule cmdlet and configure the optimization job.

**Answer:** B

#### NEW QUESTION 131

HOTSPOT - (Topic 3)

Your network contains two Active Directory Domain Services (AD DS) forests named contoso.com and fabrikam.com. A two-way forest trust exists between the forests. Each forest contains a single domain. The domains contain the servers shown in the following table.

Name	Domain	Description
Server1	contoso.com	Hosts a Windows Admin Center gateway
Server2	fabrikam.com	Hosts resources that will be managed remotely by using Windows Admin Center on Server1

You need to configure resources based constrained delegation so that the users In contoso.com can use Windows Admin Center on Server) to connect to Server? How should you complete the command? To answer, select the appropriate options in the answer area.  
NOTE: Each correct selection is worth one point.

Answer Area

Set-ADComputer -Identity

(Get-ADComputer server1.contoso.com)

(Get-ADComputer server2.fabrikam.com)

(Get-ADGroup 'Contoso\Domain Users')

(Get-ADGroup 'Fabrikam\Domain Users')

-PrincipalsAllowedToDelegateToAccount

(Get-ADComputer server1.contoso.com)

(Get-ADComputer server2.fabrikam.com)

(Get-ADGroup 'Contoso\Domain Users')

(Get-ADGroup 'Fabrikam\Domain Users')

- A. Mastered
- B. Not Mastered

Answer: A

Explanation:

Answer Area

Set-ADComputer -Identity

(Get-ADComputer server1.contoso.com)

(Get-ADComputer server2.fabrikam.com)

(Get-ADGroup 'Contoso\Domain Users')

(Get-ADGroup 'Fabrikam\Domain Users')

-PrincipalsAllowedToDelegateToAccount

(Get-ADComputer server1.contoso.com)

(Get-ADComputer server2.fabrikam.com)

(Get-ADGroup 'Contoso\Domain Users')

(Get-ADGroup 'Fabrikam\Domain Users')

NEW QUESTION 133

HOTSPOT - (Topic 2)

You need to configure Azure File Sync to meet the file sharing requirements. What should you do? To answer, select the appropriate options in the answer area.  
NOTE Each correct selection is worth one point.

Answer Area

Minimum number of sync groups to create:

1

2

3

4

Minimum number of Storage Sync Services to create:

1

2

3

4

- A. Mastered
- B. Not Mastered

Answer: A

Explanation:

Answer Area

Minimum number of sync groups to create:

1

2

3

4

Minimum number of Storage Sync Services to create:

1

2

3

4

NEW QUESTION 136

HOTSPOT - (Topic 2)

You need to configure network communication between the Seattle and New York offices. The solution must meet the networking requirements. What should you configure? To answer, select the appropriate options in the answer area. NOTE: Each correct selection is worth one point.

On a Virtual WAN hub:

An ExpressRoute gateway
A virtual network gateway
An ExpressRoute circuit connection

In the offices:

An ExpressRoute circuit connection
A Site to-Site VPN
An Azure application gateway
An on premises data gateway

- A. Mastered
- B. Not Mastered

Answer: A

Explanation:

On a Virtual WAN hub:

An ExpressRoute gateway
A virtual network gateway
An ExpressRoute circuit connection

In the offices:

An ExpressRoute circuit connection
A Site to-Site VPN
An Azure application gateway
An on premises data gateway

**NEW QUESTION 137**

- (Topic 2)

You need to implement a name resolution solution that meets the networking requirements. Which two actions should you perform? Each correct answer presents part of the solution.

NOTE: Each correct selection is worth one point

- A. Create an Azure private DNS zone named corp.fabhkam.com.
- B. Create a virtual network link in the coip.fabnkam.c om Azure private DNS zone.
- C. Create an Azure DNS zone named corp.fabrikam.com.
- D. Configure the DNS Servers settings for Vnet1.
- E. Enable autoregistration in the corp.fabnkam.com Azure private DNS zone.
- F. On DC3, install the DNS Server role.
- G. Configure a conditional forwarder on DC3.

Answer: DF

Explanation:

Virtual machines in an Azure virtual network receive their DNS configuration from the DNS settings configured on the virtual network. You need to configure the Azure virtual network to use DC3 as the DNS server. Then all virtual machines in the virtual network will use DC3 and their DNS server.

**NEW QUESTION 141**

- (Topic 1)

You need to meet the technical requirements for VM2. What should you do?

- A. Implement shielded virtual machines.
- B. Enable the Guest services integration service.
- C. Implement Credential Guard.
- D. Enable enhanced session mode.

Answer: D

NEW QUESTION 144

- (Topic 1)

You need to meet the technical requirements for Server1. Which users can currently perform the required tasks?

- A. Admin1 only
- B. Admin3 only
- C. Admin1 and Admin3 only
- D. Admin1 Admin2. and Admm3

Answer: C

NEW QUESTION 146

HOTSPOT - (Topic 1)

You need to meet the technical requirements for Server4.

Which cmdlets should you run on Server1 and Server4? To answer, select the appropriate options in the answer area.

NOTE: Each correct selection is worth one point.

Server1:

Enable-PSRemoting
Enable-ServerManagerStandardUserRemoting
Set-Item
Start-Service

Server4:

Enable-PSRemoting
Enable-ServerManagerStandardUserRemoting
Set-Item
Start-Service

- A. Mastered
- B. Not Mastered

Answer: A

Explanation:

Server1:

Enable-PSRemoting
Enable-ServerManagerStandardUserRemoting
Set-Item
Start-Service

Server4:

Enable-PSRemoting
Enable-ServerManagerStandardUserRemoting
Set-Item
Start-Service

NEW QUESTION 147

HOTSPOT - (Topic 1)

Which groups can you add to Group3 and Group5? To answer, select the appropriate options in the answer area.

NOTE: Each correct selection is worth one point.



Group3:

Group6 only
Group1 and Group2 only
Group1 and Group4 only
Group1, Group2, Group4, and Group5 only
Group1, Group2, Group4, Groups, and Group6

Group5:

Group1 only
Group4 only
Group6 only
Group2 and Group4 only
Group4 and Group6 only

- A. Mastered
- B. Not Mastered

Answer: A

Explanation:

Group3:

Group6 only
Group1 and Group2 only
Group1 and Group4 only
Group1, Group2, Group4, and Group5 only
Group1, Group2, Group4, Groups, and Group6

Group5:

Group1 only
Group4 only
Group6 only
Group2 and Group4 only
Group4 and Group6 only

NEW QUESTION 149

HOTSPOT - (Topic 1)

You need to meet the technical requirements for VM1.

Which cmdlet should you run first? To answer, select the appropriate options in the answer area.

NOTE: Each correct selection is worth one point.

Answer Area

Set-VM  
Set-VMBios  
Set-VMHost  
Set-VMFirmware  
Set-VMProcessor

VM1

-NewVMName  
-GuestControlledCacheTypes  
-EnableHostResourceProtection  
-ExposeVirtualizationExtensions

\$true

- A. Mastered
- B. Not Mastered

Answer: A

Explanation:

Graphical user interface, text, application Description automatically generated

**NEW QUESTION 150**

.....

## Thank You for Trying Our Product

### We offer two products:

1st - We have Practice Tests Software with Actual Exam Questions

2nd - Questions and Answers in PDF Format

### AZ-800 Practice Exam Features:

- \* AZ-800 Questions and Answers Updated Frequently
- \* AZ-800 Practice Questions Verified by Expert Senior Certified Staff
- \* AZ-800 Most Realistic Questions that Guarantee you a Pass on Your FirstTry
- \* AZ-800 Practice Test Questions in Multiple Choice Formats and Updatesfor 1 Year

**100% Actual & Verified — Instant Download, Please Click**  
**[Order The AZ-800 Practice Test Here](#)**