

## Exam Questions AZ-400

Microsoft Azure DevOps Solutions (beta)

<https://www.2passeasy.com/dumps/AZ-400/>



#### NEW QUESTION 1

- (Topic 4)

Your team uses Azure Pipelines to deploy applications.

You need to ensure that when a failure occurs during the build or release process, all the team members are notified by using Microsoft Teams. The solution must minimize development effort.

What should you do?

- A. Install the Azure Boards app for Teams and configure a subscription to receive notifications in a channel.
- B. Use Azure Automation to connect to the Azure DevOps REST API and notify the team members.
- C. Use an Azure function to connect to the Azure DevOps REST API and notify the team members.
- D. Install the Azure Pipelines app for Teams and configure a subscription to receive notifications in a channel.

**Answer:** D

#### NEW QUESTION 2

SIMULATION - (Topic 4)

You need to create a notification if the peak average response time of an Azure web app named az400-9940427-main is more than five seconds when evaluated during a five- minute period. The notification must trigger the “https://contoso.com/notify” webhook.

To complete this task, sign in to the Microsoft Azure portal.

- A. Mastered
- B. Not Mastered

**Answer:** A

#### Explanation:

- \* 1. Open Microsoft Azure Portal
- \* 2. Log into your Azure account and go to App Service and look under Monitoring then you will see Alert.
- \* 3. Select Add an alert rule
- \* 4. Configure the alert rule as per below and click Ok. Source: Alert on Metrics  
Resource Group: az400-9940427-main Resource: az400-9940427-main Threshold: 5  
Period: Over the last 5 minutes Webhook: https://contoso.com/notify

Add an alert rule

★ Threshold ⓘ

1

bytes/second

★ Period ⓘ

Over the last 5 minutes

▼

Email service and co-administrators

☐

Additional administrator email

Additional administrator email

Webhook ⓘ

HTTP or HTTPS endpoint to route alerts to

Learn more about configuring webhooks

OK

References:

<https://azure.microsoft.com/es-es/blog/webhooks-for-azure-alerts/>

### NEW QUESTION 3

SIMULATION - (Topic 4)

You need to create an instance of Azure Application Insights named az400-9940427-main and configure the instance to receive telemetry data from an Azure web app named az400- 9940427-main.

To complete this task, sign in to the Microsoft Azure portal.

- A. Mastered
- B. Not Mastered

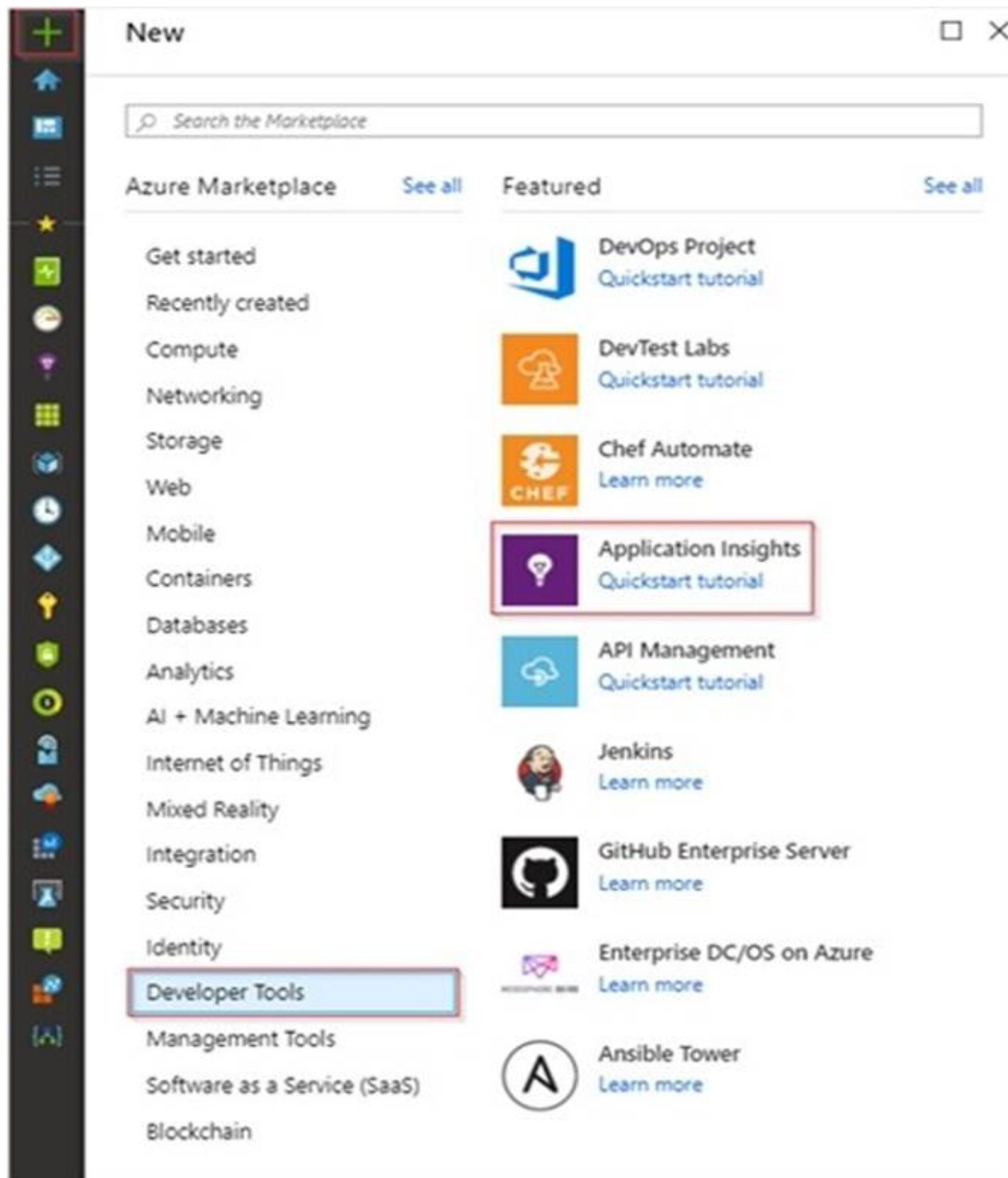
Answer: A

### Explanation:

Step 1: Create an instance of Azure Application Insights

\* 1. Open Microsoft Azure Portal

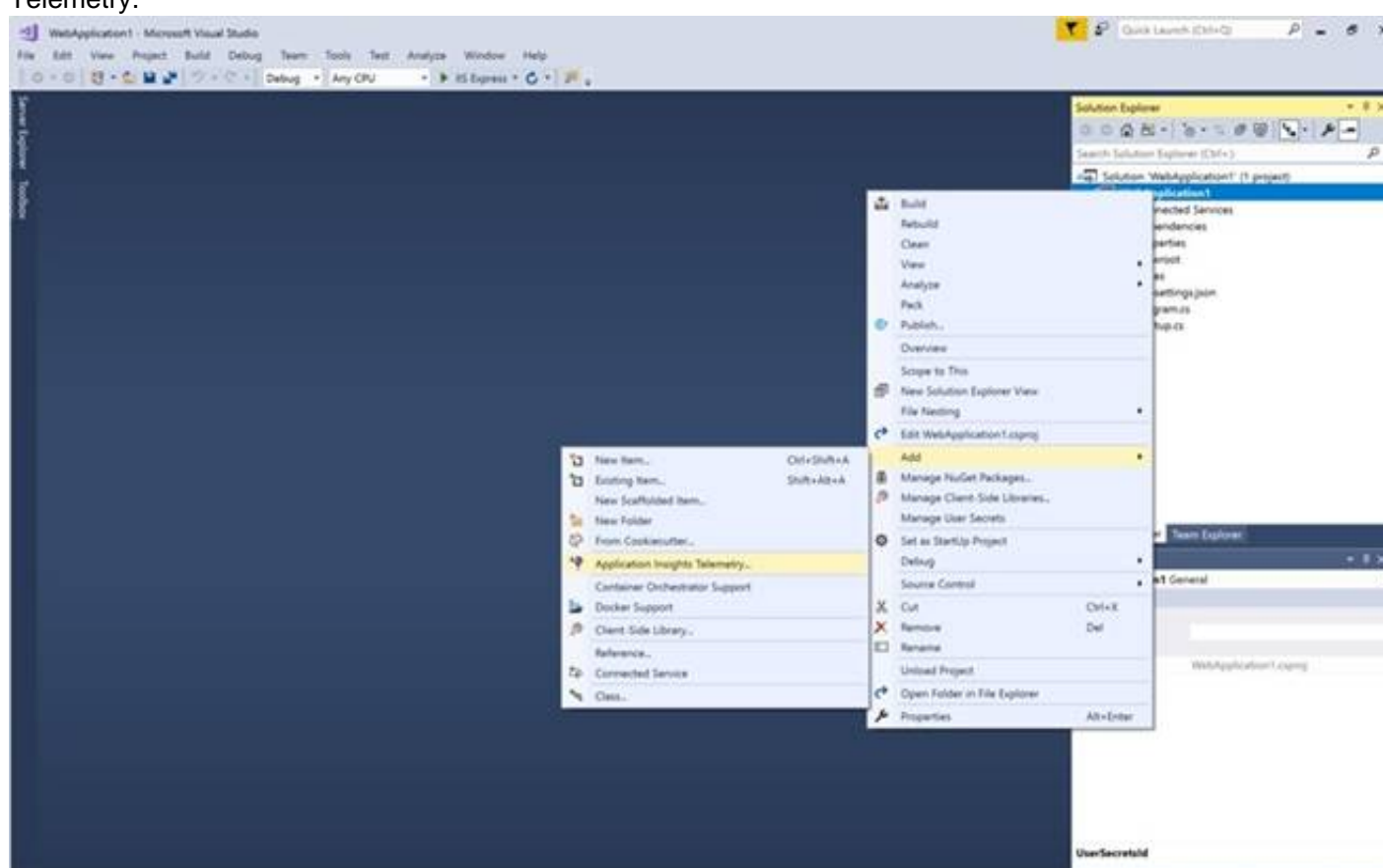
\* 2. Log into your Azure account, Select Create a resource > Developer tools > Application Insights.



\* 3. Enter the following settings, and then select Review + create. Name: az400-9940427-main

Step 2: Configure App Insights SDK

\* 4. Open your ASP.NET Core Web App project in Visual Studio > Right-click on the AppName in the Solution Explorer > Select Add > Application Insights Telemetry.



\* 5. Click the Get Started button

\* 6. Select your account and subscription > Select the Existing resource you created in the Azure portal > Click Register.

References:

<https://docs.microsoft.com/bs-latn-ba/azure/azure-monitor/learn/dotnetcore-quick-start?view=vs-2017>

#### NEW QUESTION 4

FILL IN THE BLANK - (Topic 4)

You use Get for source control. You have an app named Appt.

In the main branch. you need to restore the third most recent revision of a file named App.exe.config .

How should you complete command?

git  main

git restore  main~3 App.exe.config

- A. Mastered
- B. Not Mastered

**Answer:** A

**Explanation:**

git  checkout main

git restore  --patch main~3 App.exe.config

#### NEW QUESTION 5

- (Topic 4)

You have an Azure subscription that contains an Azure pipeline named Pipeline1 and a GitHub repository named Repo1, Repo1 contains Bicep modules. Pipeline1 deploys Azure resources by using the Bicep modules.

You need to ensure that all releases comply with Azure Policy before they are deployed to production.

What should you do?

- A. Configure a deployment gate for Pipeline' include the Azure DevOps Security and compliance assessment task.
- B. Create an Azure DevOps build runs on the creation of a pull request assesses the code tor compliance.
- C. To Pipeline1, add a step that runs a What If deployment before the deployment step.
- D. Configure a deployment gate for Pipeline' that uses Azure Automation to run a What If deployment

**Answer:** A

#### NEW QUESTION 6

- (Topic 4)

You have an Azure subscription that contains an Azure Active Directory (Azure AD) tenant. You are configuring a build pipeline in Azure Pipelines that will include a task named

Task1. Task1 will authenticate by using an Azure AD service principal.

Which three values should you configure for Task1? Each correct answer presents part of the solution.

NOTE: Each correct selection is worth one point.

- A. the object ID
- B. the tenant ID
- C. the app ID
- D. the client secret
- E. the subscription ID

**Answer:** BCD

**Explanation:**

Reference:

<https://docs.microsoft.com/en-us/azure/devops/pipelines/library/connect-to-azure>

#### NEW QUESTION 7

- (Topic 4)

Note: This question is part of a series of questions that present the same scenario. Each question in the series contains a unique solution that might meet the stated goals. Some question sets might have more than one correct solution, while others might not have a correct solution.

After you answer a question in this section, you will NOT be able to return to it. As a result, these questions will not appear in the review screen.

Your company uses Azure DevOps to manage the build and release processes for applications.

You use a Git repository for applications source control.

You need to implement a pull request strategy that reduces the history volume in the master branch.

Solution: You implement a pull request strategy that uses a three-way merge. Does this meet the goal?

- A. Yes
- B. No

**Answer:** B

**Explanation:**



Instead use fast-forward merge.  
Note:  
No fast-forward merge - This option merges the commit history of the source branch when the pull request closes and creates a merge commit in the target branch.  
Reference:  
<https://docs.microsoft.com/en-us/azure/devops/repos/git/branch-policies>

NEW QUESTION 8

DRAG DROP - (Topic 4)

You have an Azure Repos repository that contains large PSD files. You need to configure Get LFS to manage all the files.  
How should you complete the script? To answer, drag the appropriate access levels to the correct groups. Each access level may be used once, more than once, or not at all. You may need to drag the split bar between panes or scroll to view content.  
NOTE: Each correct selection is worth one point.

Values

git fetch

git lfs config add \*.psd

git lfs migrate import --include=\*.psd --everything

git lfs track \*.psd

git lfs update

git push

Answer Area

...

git lfs install

Value

git add .gitattributes

Value

git commit -m "track \*.psd files using Git LFS"

Value

Value

...

- A. Mastered
- B. Not Mastered

Answer: A

Explanation:

Values

git fetch

git lfs config add \*.psd

git lfs migrate import --include=\*.psd --everything

git lfs track \*.psd

git lfs update

git push

Answer Area

...

git lfs install

git lfs track \*.psd

git add .gitattributes

git commit -m "track \*.psd files using Git LFS"

git lfs migrate import --include=\*.psd --everything

git lfs update

...

NEW QUESTION 9

HOTSPOT - (Topic 4)

Your company uses Team Foundation Server 2013 (TFS 2013). You plan to migrate to Azure DevOps.  
You need to recommend a migration strategy that meets the following requirements:  
? Preserves the dates of Team Foundation Version Control changesets  
? Preserves the changes dates of work items revisions  
? Minimizes migration effort  
? Migrates all TFS artifacts  
What should you recommend? To answer, select the appropriate options in the answer area.  
NOTE: Each correct selection is worth one point.

On the TFS server:

Install the TFS Java SDK.

Upgrade TFS to the most recent RTW release.

Upgrade to the most recent version of PowerShell Core.

To perform the migration:

Copy the assets manually.

Use public API-based tools.

Use the TFS Database Import Service.

Use the TFS Integration Platform.

- A. Mastered
- B. Not Mastered

Answer: A

Explanation:

Box 1: Upgrade TFS to the most recent RTM release.  
One of the major prerequisites for migrating your Team Foundation Server database is to get your database schema version as close as possible to what is currently deployed in Azure DevOps Services.  
Box 2: Use the TFS Database Import Service  
In Phase 3 of your migration project, you will work on upgrading your Team Foundation Server to one of the supported versions for the Database Import Service in Azure DevOps Services.

References: Team Foundation Server to Azure DevOps Services Migration Guide

### NEW QUESTION 10

- (Topic 4)

Note: This question is part of a series of questions that present the same scenario. Each question in the series contains a unique solution that might meet the stated goals. Some question sets might have more than one correct solution, while others might not have a correct solution.

After you answer a question in this section, you will NOT be able to return to it. As a result, these questions will not appear in the review screen.

You integrate a cloud-hosted Jenkins server and a new Azure DevOps deployment. You need Azure DevOps to send a notification to Jenkins when a developer commits changes to a branch in Azure Repos.

Solution: You create a service hook subscription that uses the code pushed event. Does this meet the goal?

- A. Yes
- B. NO

**Answer: A**

#### Explanation:

You can create a service hook for Azure DevOps Services and TFS with Jenkins.

References:

<https://docs.microsoft.com/en-us/azure/devops/service-hooks/services/jenkins>

### NEW QUESTION 10

HOTSPOT - (Topic 4)

You have an Azure DevOps project that contains a build pipeline. The build pipeline uses approximately 50 open source libraries.

You need to ensure that the project can be scanned for known security vulnerabilities in the open source libraries.

What should you do? To answer, select the appropriate options in the answer area. NOTE: Each correct selection is worth one point.

Object to create:

<div>▼</div> <div> A build task  A deployment task  An artifacts repository </div>
--

Service to use:

<div>▼</div> <div> WhiteSource Bolt  Bamboo  CMake  Chef </div>
---

- A. Mastered
- B. Not Mastered

**Answer: A**

#### Explanation:

Box 1: A Build task Trigger a build

You have a Java code provisioned by the Azure DevOps demo generator. You will use WhiteSource Bolt extension to check the vulnerable components present in this code.

? Go to Builds section under Pipelines tab, select the build definition WhiteSourceBolt and click on Queue to trigger a build.

? To view the build in progress status, click on ellipsis and select View build results.

Box 2: WhiteSource Bolt

WhiteSource is the leader in continuous open source software security and compliance management. WhiteSource integrates into your build process, irrespective of your programming languages, build tools, or development environments. It works automatically, continuously, and silently in the background, checking the security, licensing, and quality of your open source components against WhiteSource constantly-updated definitive database of open source repositories.

References: <https://www.azuredevopslabs.com/labs/vstsextend/whitesource/>

### NEW QUESTION 12

- (Topic 4)

You have multiple teams that work on multiple projects in Azure DevOps.

You need to plan and manage the consumers and producers for each project. The solution must provide an overview of all the projects.

What should you do?

- A. Install the Dependency Tracker extension and create dependencies for each project.
- B. Add a Parent or Child link to the feature or user story for the items of each project.
- C. Add a Predecessor or Successor link to the feature or user story for the items of each project.
- D. Create a custom query to show the consumers and producers and add a widget to a dashboard.

**Answer:** A

#### NEW QUESTION 15

- (Topic 4)

Your company hosts a web application in Azure. The company uses Azure Pipelines for the build and release management of the application.

Stakeholders report that the past few releases have negatively affected system performance.

You configure alerts in Azure Monitor.

You need to ensure that new releases are only deployed to production if the releases meet defined performance baseline criteria in the staging environment first.

What should you use to prevent the deployment of releases that fall to meet the performance baseline?

- A. an Azure Scheduler job
- B. a trigger
- C. a gate
- D. an Azure function

**Answer:** C

#### Explanation:

Scenarios and use cases for gates include:

? Quality validation. Query metrics from tests on the build artifacts such as pass rate or code coverage and deploy only if they are within required thresholds.

Use Quality Gates to integrate monitoring into your pre-deployment or post-deployment. This ensures that you are meeting the key health/performance metrics (KPIs) as your applications move from dev to production and any differences in the infrastructure environment or scale is not negatively impacting your KPIs.

Note: Gates allow automatic collection of health signals from external services, and then promote the release when all the signals are successful at the same time or stop the deployment on timeout. Typically, gates are used in connection with incident management, problem management, change management, monitoring, and external approval systems.

References:

<https://docs.microsoft.com/en-us/azure/azure-monitor/continuous-monitoring>

<https://docs.microsoft.com/en-us/azure/devops/pipelines/release/approvals/gates?view=azure-devops>

#### NEW QUESTION 19

- (Topic 4)

Your company uses Azure DevOps for the build pipelines and deployment pipelines of Java based projects. You need to recommend a strategy for managing technical debt.

Which two actions should you include in the recommendation? Each correct answer presents part of the solution

NOTE: Each correct selection is worth one point.

- A. Integrate Azure DevOps and SonarQube.
- B. Integrates Azure DevelOPs and Azure DevTest Labs.
- C. Configure post-deployment approvals in the deployment pipeline.
- D. Configure pre-deployment approvals in the deployment pipeline.

**Answer:** AC

#### NEW QUESTION 21

- (Topic 4)

Note: This question is part of a series of questions that present the same scenario. Each question in the series contains a unique solution that might meet the stated goals. Some question sets might have more than one correct solution, while others might not have a correct solution.

After you answer a question in this section, you will NOT be able to return to it. As a result, these questions will not appear in the review screen.

You manage a project in Azure DevOps.

You need to prevent the configuration of the project from changing over time. Solution: Perform a Subscription Health scan when packages are created. Does this meet the goal?

- A. Yes
- B. No

**Answer:** B

#### Explanation:

Instead implement Continuous Assurance for the project.

Note: The Subscription Security health check features in AzSK contains a set of scripts that examines a subscription and flags off security issues, misconfigurations or obsolete artifacts/settings which can put your subscription at higher risk.

Reference:

<https://azsk.azurewebsites.net/04-Continous-Assurance/Readme.html>

#### NEW QUESTION 25

- (Topic 4)

You have an Azure subscription that contains a Log Analytics workspace named WS1 and a virtual machine named VM1.

You need to install the Microsoft Enterprise Cloud Monitoring extension on VM1.

Which two values are required to configure the extension? Each correct answer presents part of the solution.

NOTE: Each correct answer is worth one point.

- A. the secret key of WS1
- B. the ID of the subscription
- C. the system-assigned managed identity of VM1
- D. theIDofWS1
- E. the resource ID of VM1

**Answer:** DE



### NEW QUESTION 30

- (Topic 4)

You plan to provision a self-hosted Linux agent

Which authentication mechanism should you use to register the self-hosted agent?

- A. SSH key
- B. personal access token (PAT)
- C. Alternate credentials
- D. certificate

**Answer: B**

#### Explanation:

Note: PAT Supported only on Azure Pipelines and TFS 2017 and newer. After you choose PAT, paste the PAT token you created into the command prompt window. Use a personal access token (PAT) if your Azure DevOps Server or TFS instance and the agent machine are not in a trusted domain. PAT authentication is handled by your Azure DevOps Server or TFS instance instead of the domain controller.

Reference:

<https://docs.microsoft.com/en-us/azure/devops/pipelines/agents/v2-linux>

<https://docs.microsoft.com/en-us/azure/devops/pipelines/agents/v2-linux?view=azure-devops>

### NEW QUESTION 33

- (Topic 4)

Your company uses a Git repository in Azure Repos to manage the source code of a web application. The master branch is protected from direct updates.

Developers work on new features in the topic branches.

Because of the high volume of requested features, it is difficult to follow the history of the changes to the master branch.

You need to enforce a pull request merge strategy. The strategy must meet the following requirements:

- Consolidate commit histories
- Merge tie changes into a tingle commit

Which merge strategy should you use in the branch policy?

- A. Git fetch
- B. no-fast-forward merge
- C. squash merge
- D. fast-forward merge

**Answer: C**

#### Explanation:

Squash merging is a merge option that allows you to condense the Git history of topic branches when you complete a pull request. Instead of each commit on the topic branch being added to the history of the default branch, a squash merge takes all the file changes and adds them to a single new commit on the default branch.

A simple way to think about this is that squash merge gives you just the file changes, and a regular merge gives you the file changes and the commit history.

Note: Squash merging keeps your default branch histories clean and easy to follow without demanding any workflow changes on your team. Contributors to the topic branch work how they want in the topic branch, and the default branches keep a linear history through the use of squash merges. The commit history of a master branch updated with squash merges will have one commit for each merged branch. You can step through this history commit by commit to find out exactly when work was done.

References: <https://docs.microsoft.com/en-us/azure/devops/repos/git/merging-with-squash>

### NEW QUESTION 37

SIMULATION - (Topic 4)

You plane to store signed images in an Azure Container Registry instance named az4009940427acr1.

You need to modify the SKU for az4009940427acr1 to support the planned images. The solution must minimize costs.

To complete this task, sign in to the Microsoft Azure portal.

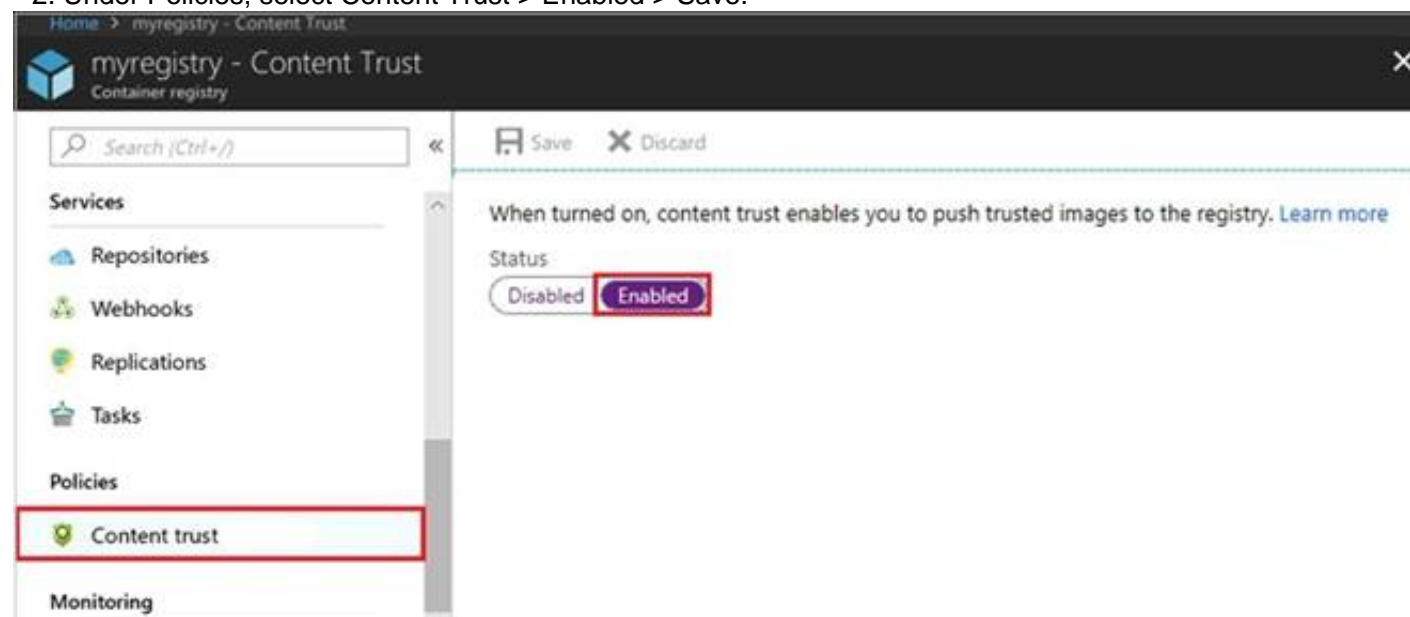
- A. Mastered
- B. Not Mastered

**Answer: A**

#### Explanation:

\* 1. Open Microsoft Azure Portal, and select the Azure Container Registry instance named az4009940427acr1.

\* 2. Under Policies, select Content Trust > Enabled > Save.



References:

<https://docs.microsoft.com/en-us/azure/container-registry/container-registry-content-trust>

**NEW QUESTION 42**

HOTSPOT - (Topic 4)

Your company uses a Git source-code repository.

You plan to implement GitFlow as a workflow strategy.

You need to identify which branch types are used for production code and preproduction code in the strategy.

Which branch type should you identify for each code type? To answer, select the appropriate options in the answer area.

NOTE: Each correct selection is worth one point.

**Answer Area**

Production code:	<div>Master Feature Develop</div>
Preproduction code:	<div>Master Feature Develop</div>

- A. Mastered
- B. Not Mastered

**Answer:** A

**Explanation:**

Box 1: Master

The Master branch contains production code. All development code is merged into master in sometime.

Box 2: Develop

The Develop branch contains pre-production code. When the features are finished then they are merged into develop.

**NEW QUESTION 46**

- (Topic 4)

You have a project in Azure DevOps named Project that contains a Kanban board named Board1.

You create a Microsoft Teams channel and add the Azure Boards app to the channel. You need to ensure that users can create work items in Board1 from Microsoft Teams. Which command should you run?

- A. @azure boards sign in
- B. @azure boards link
- C. @azure boards create
- D. @azure boards subscriptions

**Answer:** B

**NEW QUESTION 48**

- (Topic 4)

You plan to use Azure DevOps to build and deploy an app that will be hosted in a Kubernetes cluster.

You need to scan the app image for vulnerabilities before the image is deployed to the cluster.

What should you include in the solution?

- A. Microsoft Defender for DevOps
- B. Microsoft Defender for Storage
- C. Microsoft Defender for Containers
- D. Microsoft Defender for App Service

**Answer:** C

**NEW QUESTION 52**

- (Topic 4)

You have a multi-tier application. The front end of the application is hosted in Azure App Service. You need to identify the average load times of the application pages. What should you use?

- A. the diagnostics logs of the App Service
- B. Azure Application Insights
- C. Azure Advisor
- D. the activity log of the App Service

**Answer:** B

**NEW QUESTION 53**

DRAG DROP - (Topic 4)

Your company has a project in Azure DevOps.

You plan to create a release pipeline that will deploy resources by using Azure Resource Manager templates. The templates will reference secrets stored in Azure Key Vault.

You need to recommend a solution for accessing the secrets stored in the key vault during deployments. The solution must use the principle of least privilege.

What should you include in the recommendation? To answer, drag the appropriate configurations to the correct targets. Each configuration may be used once, more than once, or not at all. You may need to drag the split bar between panes or scroll to view content.  
 NOTE: Each correct selection is worth one point.

Configurations	Answer Area
an Azure Key Vault access policy	Restrict access to delete the key vault: <input type="text"/>
a personal access token (PAT)	Restrict access to the secrets in Key Vault by using: <input type="text"/>
RBAC	

- A. Mastered
- B. Not Mastered

**Answer:** A

**Explanation:**

Box 1: RBAC

Management plane access control uses RBAC.

The management plane consists of operations that affect the key vault itself, such as:

? Creating or deleting a key vault.

? Getting a list of vaults in a subscription.

? Retrieving Key Vault properties (such as SKU and tags).

? Setting Key Vault access policies that control user and application access to keys and secrets.

Box 2: RBAC

References:

<https://docs.microsoft.com/en-us/azure/azure-resource-manager/resource-manager-tutorial-use-key-vault>

**NEW QUESTION 56**

- (Topic 4)

You have the following Azure policy.

```
if: {
  allOf: [
    {
      "field": "type",
      "equals": "Microsoft.Storage/storageAccounts"
    },
    {
      "field": "Microsoft.Storage/storageAccounts/supportsHttpsTrafficOnly",
      "notEquals": "true"
    }
  ]
}
```

- A. ensures that at) data for new Azure Storage accounts is encrypted at rest
- B. prevents HTTPS traffic to new Azure Storage accounts when the accounts are accessed over the internet
- C. prevents all HTTP traffic to wasting Azure Storage accounts
- D. ensures that all traffic to new Azure Storage accounts is encrypted

**Answer:** A

**NEW QUESTION 59**

- (Topic 4)

Note: This question is part of a series of questions that present the same scenario. Each question in the series contains a unique solution that might meet the stated goals. Some question sets might have more than one correct solution, while others might not have a correct solution.

After you answer a question in this section, you will NOT be able to return to it. As a result, these questions will not appear in the review screen.

The lead developer at your company reports that adding new application features takes longer than expected due to a large accumulated technical debt.

You need to recommend changes to reduce the accumulated technical debt. Solution: You recommend reducing the code complexity.

Does this meet the goal?

- A. Yes
- B. No

**Answer:** A

**Explanation:**

Reference:

<https://dzone.com/articles/fight-through-the-pain-how-to-deal-with-technical>

**NEW QUESTION 63**

HOTSPOT - (Topic 4)

You have an Azure subscription that contains an Azure key vault named Vault1. an Azure pipeline named Pipeline1, and an Azure SQL database named DB1.

Pipeline1 is used to deploy an app that will authenticate to DB1 by using a password.

You need to store the password in Vault1. The solution must ensure that the password can be accessed by Pipeline1.

What should you do? To answer, select the appropriate options in the answer area. NOTE: Each correct selection is worth one point.

Answer Area

Store the password as a: Secret

Grant Pipeline1 access to Vault1 by modifying the: Access policies

- A. Mastered  
 B. Not Mastered

Answer: A

Explanation:

Answer Area

Store the password as a: Secret

Grant Pipeline1 access to Vault1 by modifying the: Access policies

NEW QUESTION 66

DRAG DROP - (Topic 4)

You use Extra beam Fusion SIEM and the Azure cloud platform.

You need to integrate Extra beam and Azure. The solution must use OAuth authentication. Which three actions should you perform in sequence? To answer, move the appropriate actions from the list of actions to the answer area and arrange them in the correct order.

Actions

Answer Area

Upload a certificate.

Create a client secret.

Register an Exabeam application in Microsoft Azure Active Directory (Azure AD), part of Microsoft Entra.

Configure the Exabeam Azure cloud connector.

Configure API permissions.

1

2

3

- A. Mastered  
 B. Not Mastered

Answer: A

Explanation:

Actions

Answer Area

Upload a certificate.

Create a client secret.

Register an Exabeam application in Microsoft Azure Active Directory (Azure AD), part of Microsoft Entra.

Configure the Exabeam Azure cloud connector.

Configure API permissions.

1 Create a client secret.

2 Register an Exabeam application in Microsoft Azure Active Directory (Azure AD), part of Microsoft Entra.

3 Configure the Exabeam Azure cloud connector.



#### NEW QUESTION 68

- (Topic 4)

You need to recommend an integration strategy for the build process of a Java application. The solution must meet the following requirements:

- The builds must access an on-premises dependency management system.
- The build outputs must be stored as Server artifacts in Azure DevOps.
- The source code must be stored in a Git repository in Azure DevOps.

Solution: Configure the build pipeline to use a Microsoft-hosted agent pool running a Linux image. Include the Java Tool Installer task in the build pipeline.

Does this meet the goal?

- A. Yes
- B. No

**Answer: B**

#### Explanation:

To run your jobs, you'll need at least one agent. A Linux agent can build and deploy different kinds of apps, including Java and Android apps.

If your pipelines are in Azure Pipelines and a Microsoft-hosted agent meets your needs, you can skip setting up a private Linux agent.

The Azure Pipelines agent pool offers several virtual machine images to choose from, each including a broad range of tools and software. We support Ubuntu, Red Hat, and CentOS.

Reference:

<https://docs.microsoft.com/en-us/azure/devops/pipelines/agents/v2-linux?view=azure-devops>

<https://docs.microsoft.com/en-us/azure/devops/pipelines/agents/hosted?view=azure-devops&tabs=yaml>

#### NEW QUESTION 71

- (Topic 4)

Your company has a project in Azure DevOps for a new web application. The company identifies security as one of the highest priorities.

You need to recommend a solution to minimize the likelihood that infrastructure credentials will be leaked.

What should you recommend?

- A. Add a Run Inline Azure PowerShell task to the pipeline.
- B. Add a PowerShell task to the pipeline and run Set-AzureKeyVaultSecret.
- C. Add a Azure Key Vault task to the pipeline.
- D. Add Azure Key Vault references to Azure Resource Manager templates.

**Answer: B**

#### Explanation:

Azure Key Vault provides a way to securely store credentials and other keys and secrets. The Set-AzureKeyVaultSecret cmdlet creates or updates a secret in a key vault in Azure Key Vault.

References:

<https://docs.microsoft.com/en-us/powershell/module/azurerm.keyvault/set-azurermkeyvaultsecret>

#### NEW QUESTION 75

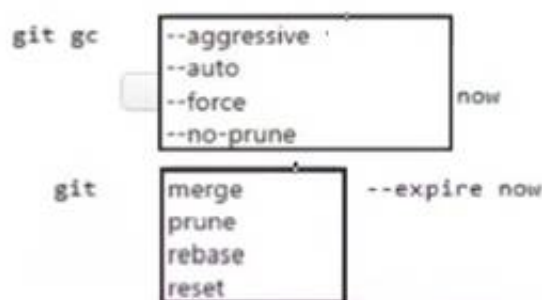
HOTSPOT - (Topic 4)

You manage the Git repository for a large enterprise application. You need to minimize the data size of the repository.

How should you complete the commands? To answer, select the appropriate options in the answer area.

NOTE: Each correct selection is worth one point.

**Answer Area**



- A. Mastered
- B. Not Mastered

**Answer: A**

#### Explanation:

Box 1: --aggressive

Cleanup unnecessary files and optimize the local repository: git gc --aggressive

Box 2: prune

Prune all unreachable objects from the object database: git prune

#### NEW QUESTION 76

DRAG DROP - (Topic 4)

You have an Azure subscription that contains a resources group named RG1. RG1 contains the following resources:

- Four Azure virtual machines that run Windows Server and have Internet Information Services (IIS) installed
- SQL Server on an Azure virtual machine
- An Azure Load Balancer

You need to deploy an application to the virtual machines in RG1 by using Azure Pipelines. Which four actions should you perform in sequence? To answer, move the appropriate

actions from the List of actions to the answer area and arrange them in the correct order.



**Actions**  

Execute the pipeline.

Create an agent pool.

Add the Puppet Agent extension to the virtual machines.

Create a deployment group.

Add and configure a deployment group job for the pipeline.

>

<

**Answer Area**  

>

<

- A. Mastered  
 B. Not Mastered

**Answer:** A

**Explanation:**

Step 1: Create an agent pool

Azure Pipelines provides a pre-defined agent pool named Azure Pipelines with Microsoft- hosted agents.

Step 2: Create a deployment group

Deployment groups make it easy to define logical groups of target machines for deployment, and install the required agent on each machine.

Step 3: Execute the Azure Pipelines Agent extension to the virtual machines Install the Azure Pipelines Agent Azure VM extension

Step 4: Add and configure a deployment group job for the pipeline

Tasks that you define in a deployment group job run on some or all of the target servers, depending on the arguments you specify for the tasks and the job itself.

**NEW QUESTION 80**

HOTSPOT - (Topic 4)

You currently use JIRA, Jenkins, and Octopus as part of your DevOps processes. You plan to use Azure DevOps to replace these tools.

Which Azure DevOps service should you use to replace each tool? To answer, select the appropriate options in the answer area.

NOTE: Each correct selection is worth one point.

JIRA:

Boards

Build pipelines

Release pipelines

Repos

Jenkins:

Boards

Build pipelines

Release pipelines

Repos

Octopus:

Boards

Build pipelines

Release pipelines

Repos

- A. Mastered  
 B. Not Mastered

**Answer:** A

**Explanation:**

JIRA- BoardJenkins- Build PipelinesOctopus- Release pipelines

**NEW QUESTION 85**

DRAG DROP - (Topic 4)

You are defining release strategies for two applications as shown in the following table.

Application name	Goal
App1	Failure of App1 has a major impact on your company. You need a small group of users, who opted in to a testing App1, to test new releases of the application.
App2	You need to minimize the time it takes to deploy new releases of App2, and you must be able to roll back as quickly as possible.

Which release strategy should you use for each application? To answer, drag the appropriate release strategies to the correct applications. Each release strategy may be used once, more than once, or not at all. You may need to drag the split bar between panes or scroll to view content.

NOTE: Each correct selection is worth one point.

### Release Strategies

Blue/Green deployment

Canary deployment

Rolling deployment

### Answer Area:

App1:

App2:

- A. Mastered
- B. Not Mastered

**Answer:** A

#### Explanation:

App1: Canary deployment

With canary deployment, you deploy a new application code in a small part of the production infrastructure. Once the application is signed off for release, only a few users

are routed to it. This minimizes any impact.

With no errors reported, the new version can gradually roll out to the rest of the infrastructure.

App2: Rolling deployment:

In a rolling deployment, an application's new version gradually replaces the old one. The actual deployment happens over a period of time. During that time, new and old versions will coexist without affecting functionality or user experience. This process makes it easier to roll back any new component incompatible with the old components.

#### NEW QUESTION 88

- (Topic 4)

You manage an Azure web app that supports an e-commerce website.

You need to increase the logging level when the web app exceeds normal usage patterns. The solution must minimize administrative overhead.

Which two resources should you include in the solution? Each correct answer presents part of the solution.

NOTE: Each correct selection is worth one point.

- A. an Azure Automation run book
- B. an Azure Monitor alert that has a dynamic threshold
- C. an Azure Monitor alert that has a static threshold
- D. the Azure Monitor auto scale settings
- E. an Azure Monitor alert that uses an action group that has an email action

**Answer:** AB

#### Explanation:

A: You can use Azure Monitor to monitor base-level metrics and logs for most services in Azure. You can call Azure Automation run books by using action groups or by using classic alerts to automate tasks based on alerts.

B: Metric Alert with Dynamic Thresholds detection leverages advanced machine learning (ML) to learn metrics' historical behavior, identify patterns and anomalies that indicate possible service issues. It

provides support of both a simple UI and operations at scale by allowing users to configure alert rules through the Azure Resource Manager API, in a fully automated manner. Reference:

<https://docs.microsoft.com/en-us/azure/azure-monitor/platform/alerts-dynamic-thresholds>

<https://docs.microsoft.com/en-us/azure/automation/automation-create-alert-triggered-runbook>

#### NEW QUESTION 90

- (Topic 4)

You have a project in Azure DevOps named Project1 that references an Azure Artifacts feed named Feed1. You have a package named Package1 that has the versions shown in the following table.

Version	Description
1.0.3	Manually pushed to Feed1
1.4.0	Manually pushed to Feed1
2.0.0	Available from an upstream source
2.3.1	Saved from an upstream source

You need to perform a build of Project1. Which version of Package1 will be used?

- A. 1.0.3
- B. 1.4.0
- C. 2.0.0
- D. 2.3.1

**Answer:** D

### NEW QUESTION 93

HOTSPOT - (Topic 4)

You plan to use Desired State Configuration (DSC) to maintain the configuration state of virtual machines that run Windows Server.

You need to perform the following:

? Install Internet Information Services (IIS) on the virtual machines.

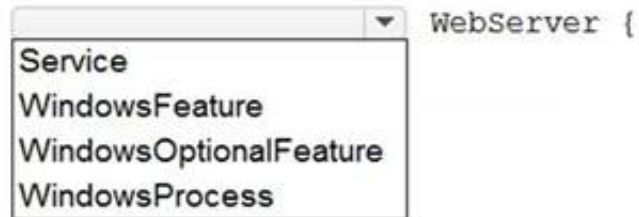
? Update the default home page of the IIS web server.

How should you configure the DSC configuration file? To answer, select the appropriate options in the answer area.

NOTE: Each correct selection is worth one point.

#### Answer Area

```
Configuration WebServerConfig {
  Import-DscResource -ModuleName PsDesiredStateConfiguration
  Node 'localhost' {
```



```
    Ensure = "Present"
    Name = "Web-Server"
```

```
}
```



```
    Ensure = 'Present'
    SourcePath = '\\server1
\DSCResources\web\index.htm'
    DestinationPath = 'c:\inetpub\wwwroot'
  }
}
```

- A. Mastered
- B. Not Mastered

**Answer:** A

#### Explanation:

See the answer in image

Box 1: Windows Feature Example:

Configuration Website Test {

# Import the module that contains the resources we're using.

Import-DscResource -Module Name Ps Desired State Configuration

# The Node statement specifies which targets this configuration will be applied to. Node 'localhost' {

# The first resource block ensures that the Web-Server (IIS) feature is enabled. Windows Feature Web Server {

Ensure = "Present" Name = "Web-Server"

}

Box 2: File Example continued:

# The second resource block ensures that the website content copied to the website root folder.

File Website Content { Ensure = 'Present'

Source Path = 'c:\test\index.htm' Destination Path = 'c:\inetpub \wwwroot'

}

### NEW QUESTION 94

- (Topic 4)

Note: This question is part of a series of questions that present the same scenario. Each question in the series contains a unique solution that might meet the stated goals. Some question sets might have more than one correct solution, while others might not have a correct solution.

After you answer a question in this section, you will NOT be able to return to it. As a result, these questions will not appear in the review screen.

You plan to update the Azure DevOps strategy of your company.

You need to identify the following issues as they occur during the company's development process:

? Licensing violations

? Prohibited libraries

Solution: You implement automated security testing.

Does this meet the goal?

- A. Yes
- B. No

**Answer:** B

### Explanation:

Instead use implement continuous integration.

Note: WhiteSource is the leader in continuous open source software security and compliance management. WhiteSource integrates into your build process, irrespective of your programming languages, build tools, or development environments. It works automatically, continuously, and silently in the background, checking the security, licensing, and quality of your open source components against WhiteSource constantly-updated denitive database of open source repositories.

Reference: https://azuredevopslabs.com/labs/vstsextend/whitesource/

### NEW QUESTION 97

HOTSPOT - (Topic 4)

You have an Azure subscription that contains two resource groups named Contoso RG and Contoso Dev, an Azure data factory named Contoso Data Factory, and a release pipeline

in Azure Pipelines named Pipeline1.

You plan to deploy Contoso Data Factory to ContosoRG by using Pipeline1.

You add the Azure Resource Manager (ARM) template deployment task shown the following exhibit.

ARM template deployment ⓘ View YAML Remove

Task version 3.\*

Display name \*  
Deploy the Contoso Data Factory

Azure Details ^

Deployment scope \* ⓘ  
Resource Group

Azure Resource Manager connection \* ⓘ Manage ⓘ  
Microsoft Azure Sponsorship ⓘ

Subscription \* ⓘ  
Microsoft Azure Sponsorship ⓘ

Action \* ⓘ  
Create or update resource group

Resource group \* ⓘ  
ContosoRG ⓘ

Location \* ⓘ  
East US ⓘ

Template ^

Template location \*  
Linked artifact

Template \* ⓘ  
\$(System.DefaultWorkingDirectory)/\_Contoso-DataFactory-CI ...

Template parameters ⓘ  
...

Override template parameters ⓘ  
...

Deployment mode \* ⓘ  
Complete

The [answer choice] setting must be changed to prevent the modification of existing databases and web apps in ContosoRG.

Pipeline1 will retrieve the ARM template from the [answer choice].

Dropdown options:  
Action  
Template location  
Deployment mode  
Deployment scope

Dropdown options:  
output of the continuous integration build  
location specified in the Linked artifact variable  
default branch of the Git repository of Contoso Data Factory

- A. Mastered
- B. Not Mastered

Answer: A

### Explanation:

Deployment Mode

Location specified in the Linked artifact variable

### NEW QUESTION 100

- (Topic 4)

Note: This question is part of a series of questions that present the same scenario. Each question in the series contains a unique solution that might meet the stated goals. Some question sets might have more than one correct solution, while others might not have a correct solution

After you answer a question in this section, you will NOT be able to return to it. As a result, these questions will not appear in the review screen



Your company has a project in Azure DevOps for a new web application. You need to ensure that when code is checked in, a build runs automatically.  
 Solution: From the Continuous deployment trigger settings of the release pipeline, you enable the Pull request trigger setting.  
 Does the meet the goal?

- A. Yes
- B. No

**Answer: B**

**Explanation:**

In Visual Designer you enable continuous integration (CI) by:

? Select the Triggers tab.

? Enable Continuous integration.

References:

<https://docs.microsoft.com/en-us/azure/devops/pipelines/get-started-designer>

**NEW QUESTION 105**

HOTSPOT - (Topic 4)

You have a project Azure DevOps.

You plan to create a build pipeline that will deploy resources by using Azure Resource Manager templates. The templates will reference secretes stored in Azure Key Vault.

You need to ensure that you can dynamically generate the resource ID of the key vault during template deployment.

What should you include in the template? To answer, select eh appropriate options in the answer area.

NOTE: Each correct selection is worth one point.

```

    "resources": [
    {
      "apiversion": "2018-05-01",
      "name" : "secrets",
      "type": 
      "properties": {
        "mode" : "Incremental",
         : {
          "deployment"
          "template"
          "templateLink"
        }
      }
    }
  ],
  "parameters": {
    "secret": {
      "reference": {
        "keyVault": {
          "id": "[resourceId(parameters('vaultSubscription'),
            parameters('vaultResourceGroupName'),
            'Microsoft.KeyVault/vaults',
            parameters('vaultName'))]"
        },
        "secretName": "[parameters('secretName')]"
      }
    }
  }
}

```

- A. Mastered
- B. Not Mastered

**Answer: A**

**Explanation:**



```

"resources": [
{
  "apiversion": "2018-05-01",
  "name" : "secrets",
  "type": 
    {
      "Microsoft.KeyVault/vaults",
      "Microsoft.Resources/deployment",
      "Microsoft.Subscription/subscriptions"
    }
  "properties": {
    "mode" : "Incremental",
    : {
      "deployment"
      "template"
      "templateLink"
    }
  }
},
contentVersion" : "1.0.0.0",
  "uri" : "[uri(parameters('_artifactsLocation'),
concat('./nested/sqlserver.json',
parameters('_artifactsLocationSasToken')))]"
},
"parameters": {
  "secret": {
    "reference": {
      "keyVault": {
        "id": "[resourceId(parameters('vaultSubscription'),
parameters('vaultResourceGroupName'),
'Microsoft.KeyVault/vaults',
parameters('vaultName'))]"
      },
      "secretName": "[parameters('secretName')]"
    }
  }
}
],

```

#### NEW QUESTION 109

- (Topic 4)

You create a Microsoft ASP.NET Core application.

You plan to use Azure Key Vault to provide secrets to the application as configuration data. You need to create a Key Vault access policy to assign secret permissions to the application. The solution must use the principle of least privilege. Which secret permissions should you use?

- A. List only
- B. Get only
- C. Get and List

**Answer:** B

#### Explanation:

Application data plane permissions:

? Keys: sign

? Secrets: get

Reference:

<https://docs.microsoft.com/en-us/azure/key-vault/key-vault-secure-your-key-vault>

#### NEW QUESTION 110

DRAG DROP - (Topic 4)

You have an Azure Key Vault that contains an encryption key named key1. You plan to create a Log Analytics workspace that will store logging data. You need to encrypt the workspace by using key1.

Which four actions should you perform in sequence? To answer, move the appropriate actions from the list of actions to the answer area and arrange them in the correct order.

Actions

Register the Azure subscription to allow cluster creation.

Enable soft delete for the key vault.

Create a Log Analytics cluster.

Grant permissions to the key vault.

Link the workspace.

>

<

Answer Area

>

<

- A. Mastered  
B. Not Mastered

Answer: A

Explanation:

Actions

Register the Azure subscription to allow cluster creation.

Enable soft delete for the key vault.

Create a Log Analytics cluster.

Grant permissions to the key vault.

Link the workspace.

>

<

Answer Area

Enable soft delete for the key vault.

Create a Log Analytics cluster.

Grant permissions to the key vault.

Link the workspace.

>

<

NEW QUESTION 112

- (Topic 4)  
You plan to use Terraform to deploy an Azure resource group.  
You need to install the required frameworks to support the planned deployment. Which two frameworks should you install? Each correct answer presents part of the solution.  
NOTE: Each correct selection is worth one point.

- A. Vault  
B. Terratest  
C. Node.js  
D. Yeoman  
E. Tiller

Answer: BD

Explanation:

You can use the combination of Terraform and Yeoman. Terraform is a tool for creating infrastructure on Azure. Yeoman makes it easy to create Terraform modules.  
Terratest provides a collection of helper functions and patterns for common infrastructure testing tasks, like making HTTP requests and using SSH to access a specific virtual machine. The following list describes some of the major advantages of using Terratest:  
? Convenient helpers to check infrastructure - This feature is useful when you want to verify your real infrastructure in the real environment.  
? Organized folder structure - Your test cases are organized clearly and follow the standard Terraform module folder structure.  
? Test cases are written in Go - Many developers who use Terraform are Go developers. If you're a Go developer, you don't have to learn another programming language to use Terratest.  
? Extensible infrastructure - You can extend additional functions on top of Terratest, including Azure-specific features.  
Reference:  
<https://docs.microsoft.com/en-us/azure/developer/terraform/create-base-template-using-yeoman>  
<https://docs.microsoft.com/en-us/azure/developer/terraform/test-modules-using-terratest>

NEW QUESTION 114

DRAG DROP - (Topic 4)  
You are configuring the settings of a new Git repository in Azure Repos.  
You need to ensure that pull requests in a branch meet the following criteria before they are merged:  
? Committed code must compile successfully.  
? Pull requests must have a Quality Gate status of Passed in SonarCloud.  
Which policy type should you configure for each requirement? To answer, drag the appropriate policy types to the correct requirements. Each policy type may be used once, more than once, or not at all. You may need to drag the split bar between panes or scroll to view content.  
NOTE: Each correct selection is worth one point.

Policy Types

A build policy

A check-in policy

A status policy

Committed code must compile successfully:

Pull requests must have a Quality Gate status of Passed in SonarCloud:

- A. Mastered  
B. Not Mastered

**Answer:** A

**Explanation:**

Box 1: A check-in policy

Administrators of Team Foundation version control can add check-in policy requirements. These check-in policies require the user to take actions when they conduct a check-in to source control.

By default, the following check-in policy types are available:

? Builds Requires that the last build was successful before a check-in.

? Code Analysis Requires that code analysis is run before check-in.

? Work Items Requires that one or more work items be associated with the check-in.

Box 2: Build policy

**NEW QUESTION 117**

- (Topic 4)

You manage source code control and versioning by using GitHub.

You need to ensure that a PowerShell script is executed automatically before rebase operations are performed.

What should you use?

- A. a package
- B. GitHub Copilot
- C. a webbook
- D. a gist

**Answer:** C

**NEW QUESTION 121**

- (Topic 4)

Your company plans to use an agile approach to software development.

You need to recommend an application to provide communication between members of the development team who work in locations around the world. The applications must meet the following requirements:

? Provide the ability to isolate the members of different project teams into separate communication channels and to keep a history of the chats within those channels.

? Be available on Windows 10, Mac OS, iOS, and Android operating systems.

? Provide the ability to add external contractors and suppliers to projects.

? Integrate directly with Azure DevOps.

What should you recommend?

- A. Microsoft Project
- B. Bamboo
- C. Microsoft Lync
- D. Microsoft Teams

**Answer:** D

**Explanation:**

? Within each team, users can create different channels to organize their communications by topic. Each channel can include a couple of users or scale to thousands of users.

? Microsoft Teams works on Android, iOS, Mac and Windows systems and devices.

It also works in Chrome, Firefox, Internet Explorer 11 and Microsoft Edge web browsers.

? The guest-access feature in Microsoft Teams allows users to invite people outside their organizations to join internal channels for messaging, meetings and file sharing. This capability helps to facilitate business-to-business project management.

? Teams integrates with Azure DevOps.

References: <https://searchunifiedcommunications.techtarget.com/definition/Microsoft-Teams>

**NEW QUESTION 126**

- (Topic 4)

You use Azure SQL Database Intelligent Insights and Azure Application Insights for monitoring.

You need to write ad-hoc queries against the monitoring data. Which query language should you use?

- A. Kusto Query Language (KQL)
- B. PL/pgSQL
- C. PL/SQL
- D. Transact-SQL

**Answer:** A

**Explanation:**

Azure Monitor Logs is based on Azure Data Explorer, and log queries are written using the same Kusto query language (KQL). This is a rich language designed to be easy to read and author, and you

should be able to start using it with minimal guidance. Reference:

<https://docs.microsoft.com/en-us/azure/azure-monitor/log-query/log-query-overview>

**NEW QUESTION 130**

- (Topic 4)

Your company develops an app for OS. All users of the app have devices that are members of a private distribution group in Microsoft Visual Studio App Center.

You plan to distribute a new release of the app.

You need to identify which certificate file you require to distribute the new release from App Center.

Which file type should you upload to App Center?



- A. .cer
- B. .pvk
- C. .pfx
- D. .p12

**Answer:** D

**Explanation:**

A successful IOS device build will produce an ipa file. In order to install the build on a device, it needs to be signed with a valid provisioning profile and certificate. To sign the builds produced from a branch, enable code signing in the configuration pane and upload a provisioning profile (.mobileprovision) and a valid certificate (.p12), along with the password for the certificate.

References:

<https://docs.microsoft.com/en-us/appcenter/build/xamarin/ios/>

**NEW QUESTION 133**

DRAG DROP - (Topic 4)

You have an Azure Repos Git repository named repo1.

You need to ensure that you can authenticate to repo1 by using SSH.

Which four actions should you perform in sequence? To answer, move the appropriate actions from the list of actions to the answer area and arrange them in the correct order.

**Actions**

Add the SSH private key.

Save the SSH key to the root of repo1.

Sign in to Azure DevOps.

Create SSH keys by using ssh-keygen.

Add the SSH public key.

Clone repo1.

**Answer Area**

>  
<

^  
v

- A. Mastered
- B. Not Mastered

**Answer:** A

**Explanation:**

**Actions**

Add the SSH private key.

Save the SSH key to the root of repo1.

Sign in to Azure DevOps.

Create SSH keys by using ssh-keygen.

Add the SSH public key.

Clone repo1.

**Answer Area**

Sign in to Azure DevOps.

Create SSH keys by using ssh-keygen.

Add the SSH public key.

Clone repo1.

^  
v

**NEW QUESTION 135**

- (Topic 4)

Your company hosts a web application in Azure. The company uses Azure Pipelines for the build and release management of the application.

Stakeholders report that the past few releases have negatively affected system performance.

You configure alerts in Azure Monitor.

You need to ensure that new releases are only deployed to production if the releases meet defined performance baseline criteria in the staging environment first.

What should you use to prevent the deployment of releases that fail to meet the performance baseline?

- A. a trigger
- B. an Azure function
- C. a gate
- D. an Azure Scheduler job

**Answer:** C

**Explanation:**

<https://docs.microsoft.com/en-us/azure/azure-monitor/continuous-monitoring>

<https://docs.microsoft.com/en-us/azure/devops/pipelines/release/approvals/gates?view=azure-devops>

**NEW QUESTION 140**

- (Topic 4)

Your company uses Azure Artifacts for package management.

You need to configure an upstream source in Azure Artifacts for Python packages. Which repository type should you use as an upstream source?

- A. PyPI
- B. npmjs.org
- C. Maven Central
- D. third-party trusted Python

Answer: A

**Explanation:**

Get started with Python packages in Azure Artifacts Create a feed  
 ? Select Artifacts (in the left navigation of your Azure DevOps project).  
 ? On the Artifacts page, select Create Feed.  
 ? In the Create new feed dialog box:  
 ? In the Name field, give the feed a name.  
 PyPI is the default repository name for twine, which is a tool for publishing Python packages. Reference:  
<https://docs.microsoft.com/en-us/azure/devops/artifacts/quickstarts/python-packages>

**NEW QUESTION 142**

- (Topic 4)

Note: This question is part of a series of questions that present the same scenario. Each question in the series contains a unique solution that might meet the stated goals. Some question sets might have more than one correct solution, while others might not have a correct solution.

After you answer a question in this section, you will NOT be able to return to it. As a result, these questions will not appear in the review screen.

You manage a project in Azure DevOps.

You need to prevent the configuration of the project from changing over time. Solution: Add a code coverage step to the build pipelines.

Does this meet the goal?

- A. Yes
- B. No

Answer: B

**Explanation:**

Instead implement Continuous Assurance for the project.

Reference:

<https://azsk.azurewebsites.net/04-Continuous-Assurance/Readme.html>

**NEW QUESTION 147**

HOTSPOT - (Topic 4)

You have a project in Azure DevOps that contains a release pipeline. The pipeline contains two stages named QA and Prod. QA deploys code to an Azure web app named webapp1. Prod deploys code to an Azure web app named webapp2.

You need to ensure that code deployments to webapp2 are blocked if Azure Application Insights generates Failed requests alerts following the deployment of new code to webapp1.

What should you do for each stage? To answer, select the appropriate options in the answer area.

NOTE: Each correct selection is worth one point.

QA:

- Add a task to configure alert rules in Application Insights.
- Configure a gate in the pre-deployment conditions.
- Configure an auto-redeploy trigger in the post-deployment conditions
- Configure a post-deployment approval in the post-deployment conditions

Prod:

- Add a task to configure an alert rule in Application Insights.
- Configure a gate in the pre-deployment conditions.
- Configure a trigger in the pre-deployment conditions.
- Configure the Deployment queue settings in the pre-deployment conditions.

- A. Mastered
- B. Not Mastered

Answer: A

**Explanation:**

QA:

- Add a task to configure alert rules in Application Insights.
- Configure a gate in the pre-deployment conditions.
- Configure an auto-redeploy trigger in the post-deployment conditions
- Configure a post-deployment approval in the post-deployment conditions

Prod:

- Add a task to configure an alert rule in Application Insights.
- Configure a gate in the pre-deployment conditions.
- Configure a trigger in the pre-deployment conditions.
- Configure the Deployment queue settings in the pre-deployment conditions.



## NEW QUESTION 152

- (Topic 4)

Note: This question is part of a series of questions that present the same scenario. Each question in the series contains a unique solution that might meet the stated goals. Some question sets might have more than one correct solution, while others might not have a correct solution.

After you answer a question in this section, you will NOT be able to return to it. As a result, these questions will not appear in the review screen.

You plan to create a release pipeline that will deploy Azure resources by using Azure Resource Manager templates. The release pipeline will create the following resources:

? Two resource groups

? Four Azure virtual machines in one resource group

? Two Azure SQL databases in other resource group

You need to recommend a solution to deploy the resources.

Solution: Create two standalone templates, each of which will deploy the resources in its respective group.

Does this meet the goal?

A. Yes

B. No

**Answer: B**

### Explanation:

References: <https://docs.microsoft.com/en-us/azure/azure-resource-manager/resource-group-linked-templates>

## NEW QUESTION 155

SIMULATION - (Topic 4)

You need to ensure that the https://contoso.com/statushook webhook is called every time a repository named az40010480345acr1 receives a new version of an image named dotnetapp.

To complete this task, sign in to the Microsoft Azure portal.

A. Mastered

B. Not Mastered

**Answer: A**

### Explanation:

? Sign in to the Azure portal.

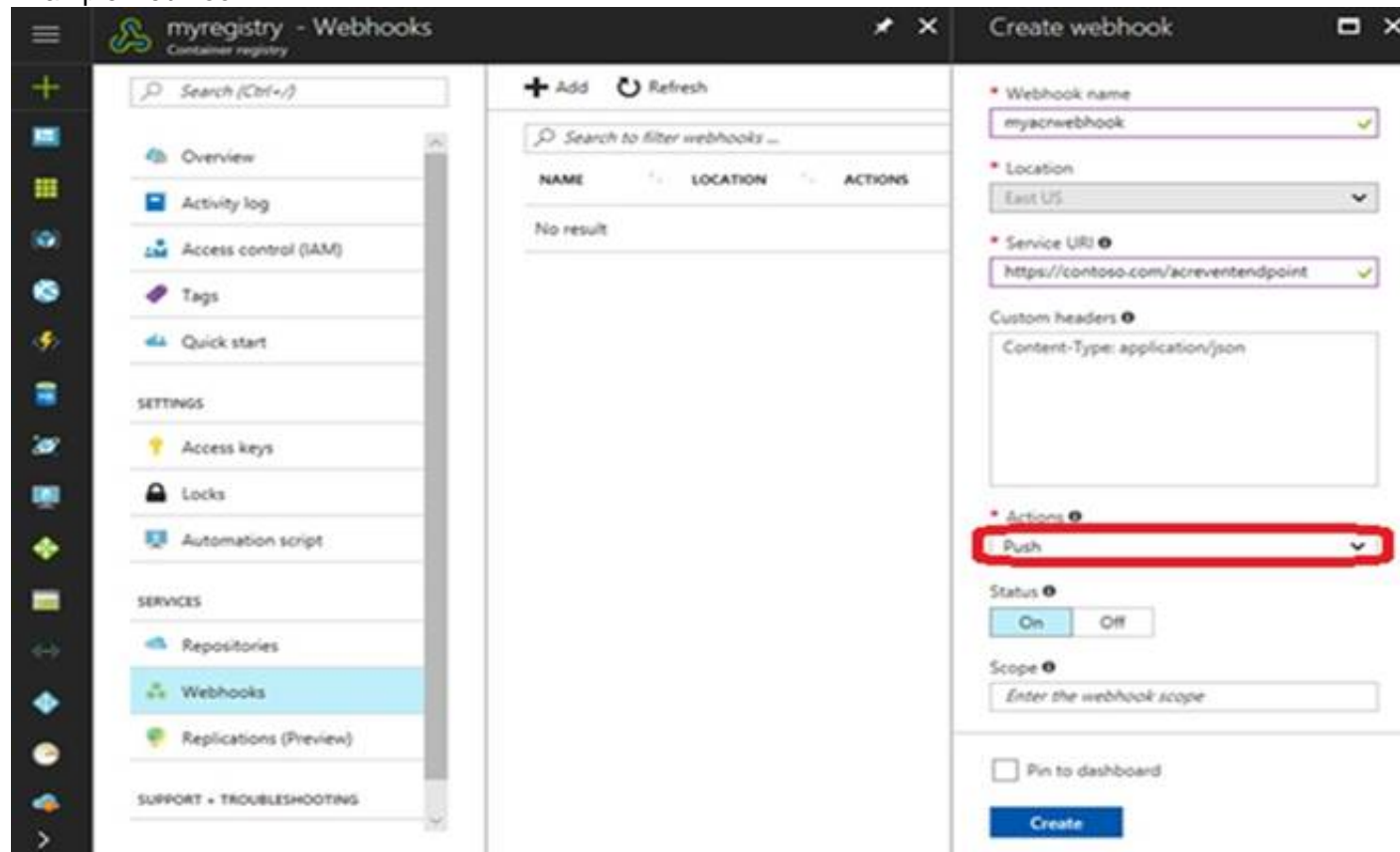
? Navigate to the container registry az40010480345acr1.

? Under Services, select Webhooks.

? Select the existing webhook https://contoso.com/statushook, and double-click on it to get its properties.

? For Trigger actions select image push

Example web hook:



## NEW QUESTION 158

FILL IN THE BLANK - (Topic 4)

You have a GitHub repository that contains the source code for an app.

You need to identify all the changes made between versions 1.4.16 and 1.6.12 of the source code.

How should you complete the Get command? To answer, select the appropriate options in the answer area.

NOTE: Each correct selection is worth one point.

Git | helper-script > changes.txt

**Answer Area**

git  | helper-script > changes.txt

A. Mastered

B. Not Mastered

Answer: A

Explanation:

Answer below

get diff v1.4.16 v1.6.12 | helper-script > changes.txt

This command will compare the changes made between versions 1.4.16 and 1.6.12 of the source code in your GitHub repository, pipe the output through the helper-script and save the result to a file called "changes.txt" Please note that, this command assumes that you have a helper-script that can handle get diff output as an input and processes it further. It is not a default get command.

NEW QUESTION 161

DRAG DROP - (Topic 4)

You have an Azure Pipeline.

You need to store configuration values as variables.

At which four scopes can the variables be defined, and what is the precedence of the variables from the highest precedence to lowest precedence? To answer, move the appropriate scope from the list of scopes to the answer area and arrange them in the correct order.

Scopes

task

job

stage

pipeline root

pipeline settings UI

>

<

Answer Area

&u2191

&u2193

A. Mastered

B. Not Mastered

Answer: A

Explanation:

Scopes

task

job

stage

pipeline root

pipeline settings UI

>

<

Answer Area

job

stage

pipeline root

pipeline settings UI

&u2191

&u2193

NEW QUESTION 164

DRAG DROP - (Topic 4)

You have a large repository named Repo1 that contains a directory named directory 1. You plan to modify files in directory1.

You need to create a clone of Repo1. The solution must minimize the amount of transferred data.

How should you complete the script? To answer, drag the appropriate values to the correct targets. Each value may be used once, more than once, or not at all.

You may need to drag the split bar between panes or scroll to view content.

NOTE: Each correct selection is worth one point.

Values

git clone

git fetch

git sparse-checkout

git worktree

scalar clone

scalar run

&u25b6

&u25c0

Answer Area

...

cd repos

https://dev.azure.com/organisation/\_git/Repo1

set directory1

...

A. Mastered

B. Not Mastered

Answer: A

Explanation:

Values

git clone

git fetch

git sparse-checkout

git worktree

scalar clone

scalar run

&u25b6

&u25c0

Answer Area

...

cd repos

git clone

https://dev.azure.com/organisation/\_git/Repo1

git sparse-checkout

set directory1

...

NEW QUESTION 167

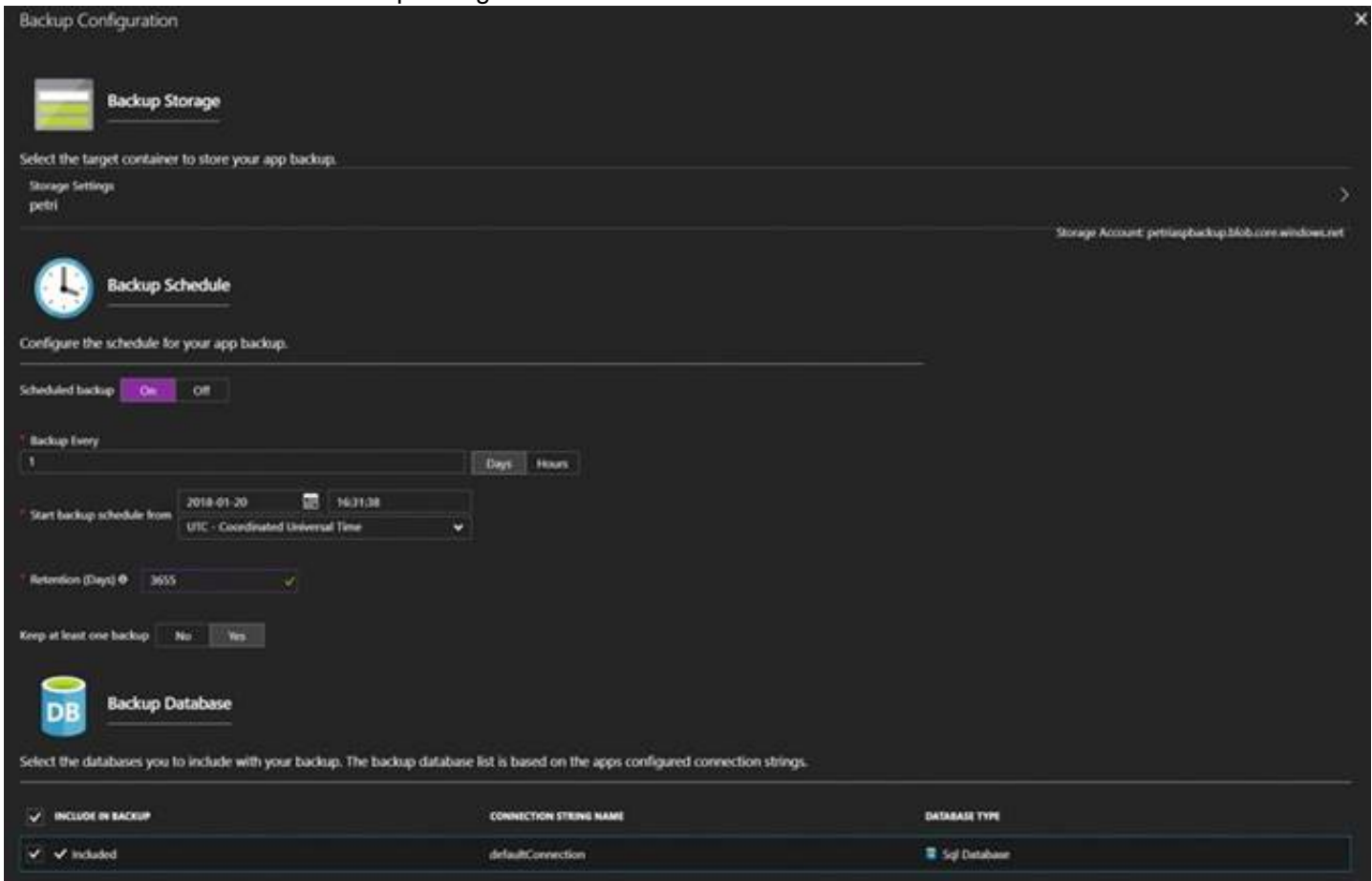
SIMULATION - (Topic 4)  
Your company plans to implement a new compliance strategy that will require all Azure web apps to be backed up every five hours.  
You need to back up an Azure web app named az400-11566895-main every five hours to an Azure Storage account in your resource group.  
To complete this task, sign in to the Microsoft Azure portal.

- A. Mastered
- B. Not Mastered

Answer: A

Explanation:

With the storage account ready, you can configure backs up in the web app or App Service.  
? Open the App Service az400-11566895-main, which you want to protect, in the Azure Portal and browse to Settings > Backups. Click Configure and a Backup Configuration blade should appear.  
? Select the storage account.  
? Click + to create a private container. You could name this container after the web app or App Service.  
? Select the container.  
? If you want to schedule backups, then set Scheduled Backup to On and configure a schedule: every five hours  
? Select your retention. Note that 0 means never delete backups.  
? Decide if at least one backup should always be retained.  
? Choose if any connected databases should be included in the web app backup.  
? Click Save to finalize the backup configuration.



NEW QUESTION 169

DRAG DROP - (Topic 4)  
You have an Azure subscription that uses Azure Monitor and contains a Log Analytics workspace.  
You have an encryption key.  
You need to configure Azure Monitor to use the key to encrypt log data

Actions

Grant the system-assigned managed identity Certificate permissions for the key vault.

Create an Azure key vault and store the key.

Configure the key vault properties for the cluster.

Grant the system-assigned managed identity Key permissions for the key vault.

Create an Azure Monitor Logs dedicated cluster that has a system-assigned managed identity.

Link the Log Analytics workspace to the cluster.

Answer Area

1

2

3

4

5

>

<

^

v

- A. Mastered
- B. Not Mastered

Answer: A

Explanation:



Actions

Grant the system-assigned managed identity Certificate permissions for the key vault.

Create an Azure key vault and store the key.

Configure the key vault properties for the cluster.

Grant the system-assigned managed identity Key permissions for the key vault.

Create an Azure Monitor Logs dedicated cluster that has a system-assigned managed identity.

Link the Log Analytics workspace to the cluster.

Answer Area

1 Create an Azure key vault and store the key.

2 Configure the key vault properties for the cluster.

3 Grant the system-assigned managed identity Key permissions for the key vault.

4 Create an Azure Monitor Logs dedicated cluster that has a system-assigned managed identity.

5 Link the Log Analytics workspace to the cluster.

NEW QUESTION 172

DRAG DROP - (Topic 4)

You need to use Azure Automation Sure Configuration to manage the ongoing consistency of virtual machine configurations.

Which five actions should you perform in sequence? To answer, move the appropriate actions from the list of actions to the answer area and arrange them in the correct order.

NOTE: More than one order of answer choices is correct. You will receive credit for any of the orders you select.

Actions

Onboard the virtual machines to Azure Automation State Configuration.

Check the compliance status of the node.

Create a management group.

Assign the node configuration.

Compile a configuration into a node configuration.

Upload a configuration to Azure Automation State Configuration.

Assign tags to the virtual machines.

Answer Area

- A. Mastered
- B. Not Mastered

Answer: A

Explanation:

Step 1: Assign the node configuration.

You create a simple DSC configuration that ensures either the presence or absence of the Web-Server Windows Feature (IIS), depending on how you assign nodes.

Step 2: Upload a configuration to Azure Automation State Configuration. You import the configuration into the Automation account.

Step 3: Compiling a configuration into a node configuration Compiling a configuration in Azure Automation

Before you can apply a desired state to a node, a DSC configuration defining that state must be compiled into one or more node configurations (MOF document), and placed on the Automation DSC Pull Server.

Step 4: Onboard the virtual machines to Azure State Configuration

Onboarding an Azure VM for management with Azure Automation State Configuration

Step 5: Check the compliance status of the node.

Viewing reports for managed nodes. Each time Azure Automation State Configuration performs a consistency check on a managed node, the node sends a status report back to the pull server. You can view these reports on the page for that node.

On the blade for an individual report, you can see the following status information for the corresponding consistency check:

The report status — whether the node is "Compliant", the configuration "Failed", or the node is "Not Compliant" (when the node is in ApplyandMonitor mode and the machine is not in the desired state).

References: <https://docs.microsoft.com/en-us/azure/automation/automation-dsc-getting-started>

NEW QUESTION 175

- (Topic 4)

You have a private GitHub repository.

You need to display the commit status of the repository on Azure Boards. What should you do first?

- A. Create a GitHub action in GitHub.
- B. Add the Azure Pipelines app to the GitHub repository.
- C. Configure multi-factor authentication (MFA) for your GitHub account.
- D. Add the Azure Boards app to the repository.

Answer: D

#### Explanation:

To connect Azure Boards to GitHub.com, connect and configure from Azure Boards. Or, alternatively, install and configure the Azure Boards app from GitHub. Both methods have been streamlined and support authenticating and operating via the app rather than an individual.

Note (see step 4 below): Add a GitHub connection:

? Sign into Azure Boards.

? Choose (1) Project Settings, choose (2) GitHub connections and then (3) Connect your GitHub account.

? If this is your first time connecting to GitHub from Azure Boards, you will be asked

to sign in using your GitHub credentials. Choose an account for which you are an administrator for the repositories you want to connect to.

? The Add GitHub Repositories dialog automatically displays and selects all

GitHub.com repositories for which you are an administrator. Unselect any repositories that you don't want to participate in the integration.

### Add GitHub repositories

Add the GitHub repositories you want to use with your Azure Boards.

Filter by keywords

Viewing 4, 4 selected

- ☒ JamalHart/fabrikam- apps-2
- ☒ JamalHart/fabrikam- demo
- ☒ JamalHart/fabrikam- open-source
- ☒ JamalHart/fabrikam- suite

Save

Reference:

<https://docs.microsoft.com/en-us/azure/devops/boards/github/connect-to-github>

#### NEW QUESTION 179

DRAG DROP - (Topic 4)

You are implementing a new project in Azure DevOps.

You need to assess the performance of the protect. The solution must identity the following metrics:

- How long it takes to complete a work item
- \* The percentage of defects found in production

Which DevOps KPI should you review for each metric? To answer drag the appropriate KPIs to the correct metric. Each KPI may be used once, more than once, or not at all. You may need to drag the spirt bar between panes or scroll to view content.

NOTE Each correct selection is worth one point.

KPIs

Application failure rates
Bug report rates
Burndown trend
Cycle time
Defect escape rate
Deployment speed
Lead time
Mean time to recover

Answer Area

How long it takes to complete a work item:
The percentage of defects found in production:

- A. Mastered
- B. Not Mastered

Answer: A

Explanation:





NEW QUESTION 181

DRAG DROP - (Topic 4)

You have an Azure Repos repository named repo1.

You need to clone repo1. The solution must clone only a directory named src/web.

How should you complete the script? To answer, drag the appropriate values to the correct targets,Each value may be used once, more than once, or not at all.

You may need to drag the spirt bar between panes or scroll to view content.

NOTE: Each correct selection is worth one point



- A. Mastered
- B. Not Mastered

Answer: A

Explanation:



NEW QUESTION 186

SIMULATION - (Topic 4)

You need to configure an Azure web app named az400-9940427-main to contain an environmental variable named “MAX\_ITEMS”. The environmental variable must have a value of 50.

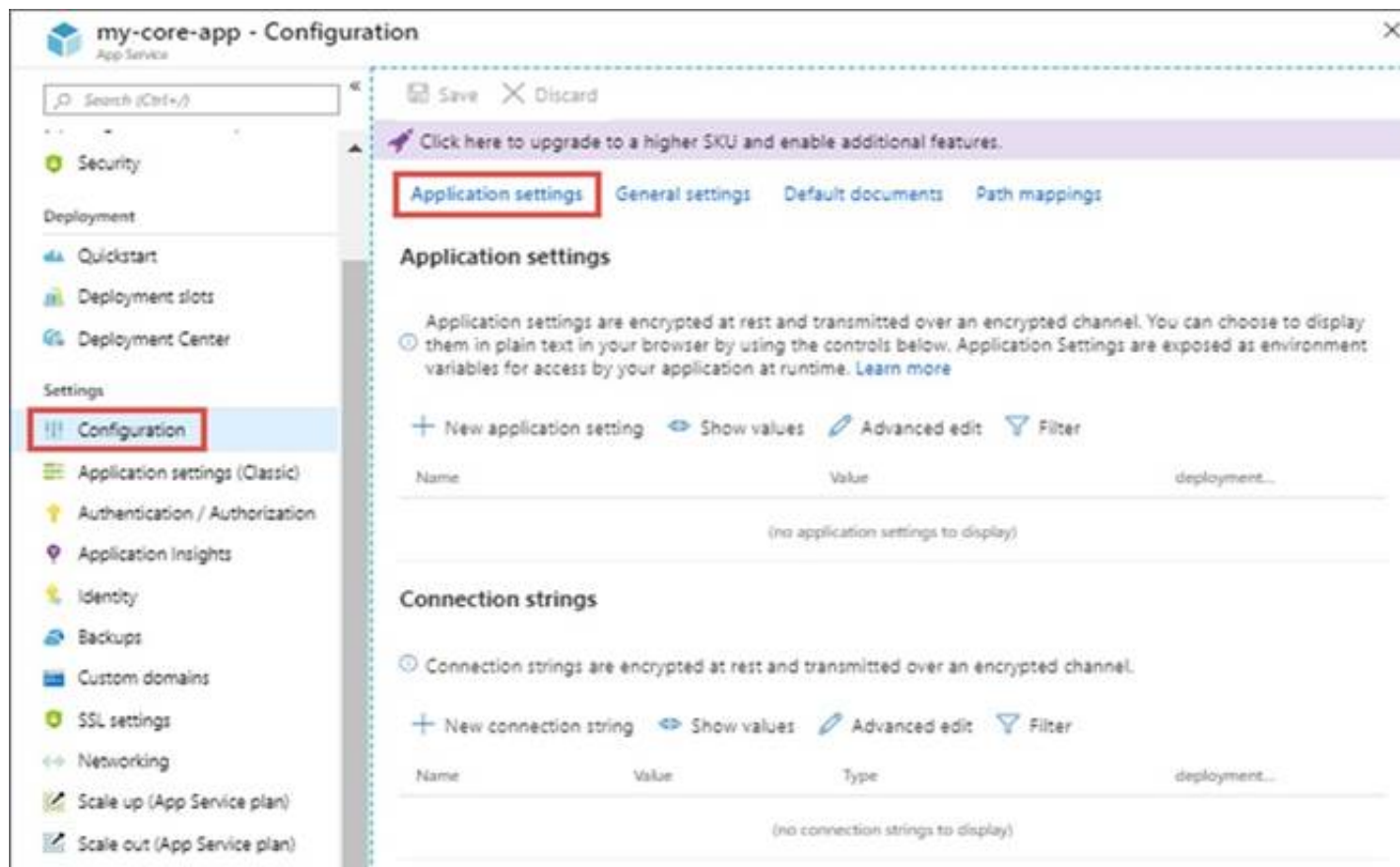
To complete this task, sign in to the Microsoft Azure portal.

- A. Mastered
- B. Not Mastered

Answer: A

Explanation:

\* 1. In the Azure portal, navigate to the az400-9940427-main app's management page. In the app's left menu, click Configuration > Application settings.



\* 2. Click New Application settings

\* 3. Enter the following:

? Name: MAX\_ITEMS

? Value: 50

References:

<https://docs.microsoft.com/en-us/azure/app-service/configure-common>

#### NEW QUESTION 190

- (Topic 4)

You plan to create a project in Azure DevOps. Multiple developers will work on the project. The developers will work offline frequently and will require access to the full project history while they are offline.

Which version control solution should you use?

- A. TortoiseSVN
- B. Team Foundation Version Control
- C. Subversion
- D. Git

**Answer: D**

#### Explanation:

Git history: File history is replicated on the client dev machine and can be viewed even when not connected to the server. You can view history in Visual Studio and on the web portal.

Note: Azure Repos supports two types of version control: Git and Team Foundation Version Control (TFVC).

Reference:

<https://docs.microsoft.com/en-us/azure/devops/repos/tfvc/comparison-git-tfvc>

#### NEW QUESTION 194

DRAG DROP - (Topic 4)

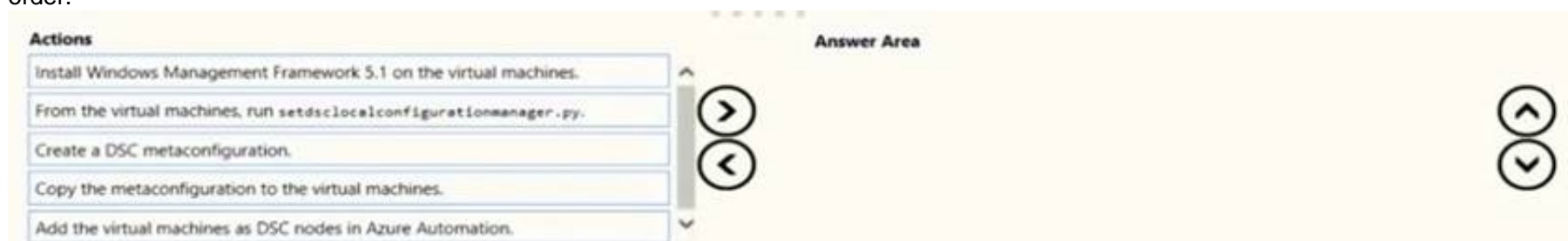
Your company has two virtual machines that run Linux in a third-party public cloud.

You plan to use the company's Azure Automation State Configuration implementation to manage the two virtual machines and detect configuration drift.

You need to onboard the Linux virtual machines.

You install PowerShell Desired State Configuration (DSC) on the virtual machines, and then run register.py.

Which three actions should you perform next in sequence? To answer, move the actions from the list of actions to the answer area and arrange them in the correct order.



- A. Mastered
- B. Not Mastered

**Answer: A**

#### Explanation:

Step 1: Create a DSC metaconfiguration

Load up the DSC Configuration into Azure Automation.

Step 2: Copy the metaconfiguration to the virtual machines. Linking the Node Configuration to the Linux Host

Step 3: Add the virtual machines as DSC nodes in Azure Automation.

go to DSC Nodes, select your node, and then click Assign node configuration. This step assigns the DSC configuration to the Linux machine. Next up will be to link the node configuration to the host. Go to the host and press the “Assign node...”-button. Next up you can select your node configuration.

NEW QUESTION 199

DRAG DROP - (Topic 4)

As part of your application build process, you need to deploy a group of resources to Azure by using an Azure Resource Manager template located on GitHub. Which three action should you perform in sequence? To answer, move the appropriate actions from the list of actions to the answer area and arrange them in the correct order.

Actions

Create a package.

Add an Azure Resource Group Deployment task.

Create a job agent.

Create a release pipeline.

Set the template parameters.

Answer Area

- A. Mastered
- B. Not Mastered

Answer: A

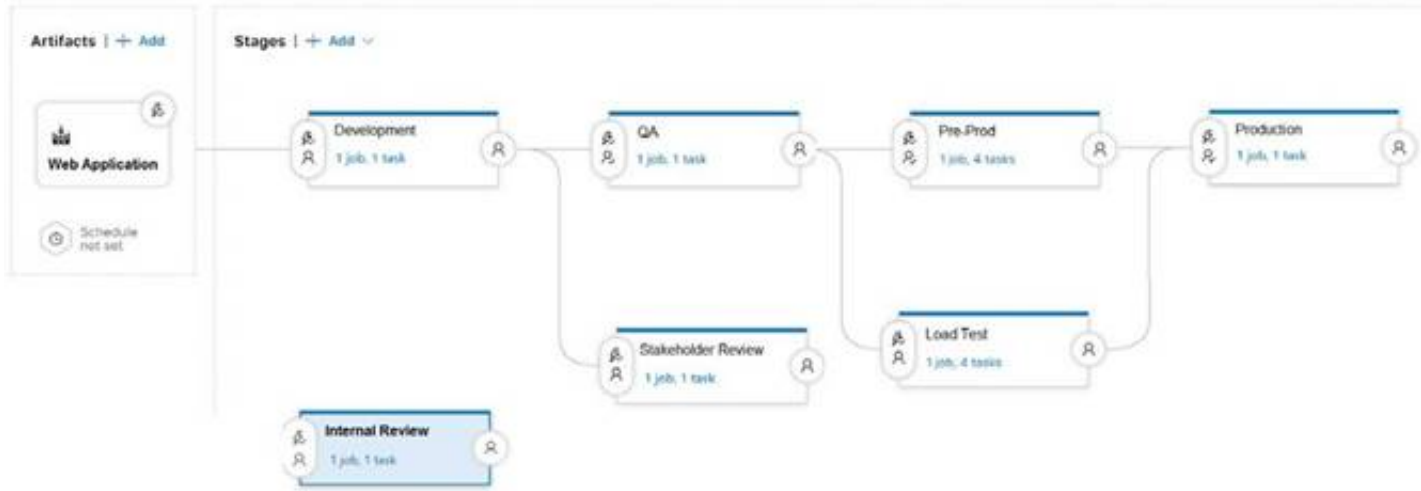
Explanation:

Step 1: Create a release pipeline You need to create a new pipeline.  
You can integrate Azure Resource Manager templates (ARM templates) with Azure Pipelines for continuous integration and continuous deployment (CI/CD).  
Step 2: Add an Azure Resource Group Deployment task Step 3: Set the template parameters

NEW QUESTION 203

HOTSPOT - (Topic 4)

You are configuring a release pipeline in Azure DevOps as shown in the exhibit.



Use the drop-down menus to select the answer choice that answers each question based on the information presented in the graphic.  
NOTE: Each correct selection is worth one point.

How many stages have triggers set?

0

1

2

3

4

5

6

7

Which component should you modify to enable continuous delivery?

The Development stage

The Internal Review stage

The Production stage

The Web Application artifact

- A. Mastered
- B. Not Mastered

Answer: A

Explanation:

Box 1: 5  
There are five stages: Development, QA, Pre-production, Load Test and Production. They all have triggers.  
Box 2: The Internal Review stage  
References: <https://docs.microsoft.com/en-us/azure/devops/pipelines/release/triggers>

NEW QUESTION 206

- (Topic 4)

Note: This question is part of a series of questions that present the same scenario. Each question in the series contains a unique solution that might meet the



stated goals. Some question sets might have more than one correct solution, while others might not have a correct solution. After you answer a question in this section, you will NOT be able to return to it. As a result, these questions will not appear in the review screen. You use Azure Pipelines to build and test a React.js application. You have a pipeline that has a single job. You discover that installing JavaScript packages from 9pm takes approximately five minutes each time you run the pipeline. You need to recommend a solution to reduce the pipeline execution time. Solution: You recommend using pipeline artifacts. Does this meet the goal?

- A. Yes
- B. No

**Answer: B**

**Explanation:**

Pipeline artifacts are a way to persist build outputs, test results, and other files generated during a pipeline run. They allow you to share data between stages, jobs, and pipelines, and to persist data for longer than the lifetime of a pipeline run. While artifacts can be useful for sharing data between pipeline runs and reducing the time required to download dependencies, they are not a solution for reducing the time required to install JavaScript packages from 9pm during a pipeline run. The solution of reducing the pipeline execution time could be achieved by using package caching, which allows you to store and reuse 9pm packages from previous pipeline runs. There are several package caching options available for Azure Pipelines, including the 9pm task, the 9pm cache task, and the 9pm ci task. All of these options allow you to configure caching for your 9pm packages, which can significantly reduce the time required to install packages during subsequent pipeline runs. Another solution could be using a dedicated agent that has those packages already installed, this way the pipeline doesn't have to install them again. You can find more information on package caching by following this link <https://docs.microsoft.com/en-us/azure/devops/pipelines/tasks/package/npm-cache?view=azure-devops>

**NEW QUESTION 209**

- (Topic 4)

Your company creates a web application.

You need to recommend a solution that automatically sends to Microsoft Teams a daily summary of the exceptions that occur in the application.

Which two Azure services should you recommend? Each correct answer presents part of the solution.

NOTE: Each correct selection is worth one point.

- A. Azure Logic Apps
- B. Azure Pipelines
- C. Microsoft Visual Studio App Center
- D. Azure DevOps Project
- E. Azure Application Insights

**Answer: AE**

**Explanation:**

E: Exceptions in your live web app are reported by Application Insights.

Note: Periodical reports help keep a team informed on how their business critical services are doing. Developers, DevOps/SRE teams, and their managers can be productive with automated reports reliably delivering insights without requiring everyone to sign in the portal. Such reports can also help identify gradual increases in latencies, load or failure rates that may not trigger any alert rules.

A: You can programmatically query Application Insights data to generate custom reports on a schedule. The following options can help you get started quickly:

Automate reports with Microsoft Flow

Automate reports with Logic Apps Reference:

<https://docs.microsoft.com/en-us/azure/azure-monitor/app/asp-net-exceptions> <https://docs.microsoft.com/en-us/azure/azure-monitor/app/automate-custom-reports>

**NEW QUESTION 213**

DRAG DROP - (Topic 4)

You have an Azure DevOps organization named Contoso.

You have 10 Azure virtual machines that run Windows Server 2019. The virtual machines host an application that you build and deploy by using Azure Pipelines.

Each virtual machine has the Web Server (IIS) role installed and configured.

You need to ensure that the web server configurations pin the virtual machines is maintained automatically. The solution must provide centralized management of the configuration settings and minimize management overhead.

Which four actions should you perform in sequence? To answer, move the appropriate actions from the list of actions to the answer area and arrange them in the correct order.

**Actions**

Install the custom Desired State Configuration (DSC) extension on the virtual machines.

Compile the Desired State Configuration (DSC) configuration.

Import a Desired State Configuration (DSC) configuration into the Azure Automation account.

Create an Azure Automation account.

Onboard the virtual machines to the Azure Automation account.

>

<

**Answer Area**

↑

↓

- A. Mastered
- B. Not Mastered

**Answer: A**

**Explanation:**

Step1: Create an Azure Automation account. An Azure Automation account is required.

Step 2: Install the custom Desired State Configuration (DSC) extension on the virtual machines

Under the hood, and without an administrator having to remote into a VM, the Azure VM Desired State Configuration extension registers the VM with Azure Automation State Configuration.

Step 3: Onboard the virtual machines to the Azure Automation account.



Step 4: Complete the Desired State Configuration (DSC) configuration. Create a DSC configuration.

### NEW QUESTION 214

HOTSPOT - (Topic 4)

You have an application named App1 that has a custom domain of app.contoso.com. You create a test in Azure Application Insights as shown in the following exhibit.

## Create test

^ Basic Information

\* Test name

availability

Learn more about configuring tests against applications hosted behind a firewall

Test type

URL ping test

\* URL ⓘ

https://app.contoso.com

Parse dependent requests ⓘ

☒

Enable retries for availability test failures. ⓘ

☐

Test frequency ⓘ

5 minutes

^ Test locations

4 location(s) configured

^ Success criteria

Test Timeout ⓘ

30 seconds

☒ HTTP response ⓘ

Status code must equal

200

☒ Content match ⓘ

Content must contain

Copyright Contoso

^ Alerts

Enabled

Create

Use the drop-down menus to select the answer choice that completes each statement based on the information presented in the graphic.

NOTE: Each correct selection is worth one point.

The test will execute [answer choice].

<div>▼</div> <div> every 30 seconds at a random location  every 30 seconds per location  every five minutes at a random location  every five minutes per location </div>
--

The test will pass if [answer choice] within 30 seconds.

<div>▼</div> <div> App1 responds to an ICMP ping  the HTML of App1 and the HTML from URLs in &lt;a&gt; tags load  all the HTML, JavaScripts, and images of App1 load </div>
---

- A. Mastered
- B. Not Mastered

Answer: A

#### Explanation:

Box 1: every five minutes at a random location

Test frequency: Sets how often the test is run from each test location. With a default frequency of five minutes and five test locations, your site is tested on average every minute.

Box 2:

Parse dependent requests: Test requests images, scripts, style files, and other files that are part of the web page under test. The recorded response time includes the time taken to get these files. The test fails if any of these resources cannot be successfully downloaded within the timeout for the whole test.

#### NEW QUESTION 219

HOTSPOT - (Topic 4)

You company uses Azure DevOps to deploy infrastructures to Azure. Pipelines are developed by using YAML.

You execute a pipeline and receive the results in the web portal for Azure Pipelines as shown in the following exhibit.

Use the drop-down menus to select the answer choice that completes each statement based on the information presented in the graphic.

NOTE: Each correct selection is worth one point.

The pipeline contains

	▼
one stage	
two stages	
three stages	
four stages	
five stages	

Build\_vm contains

	▼
one job	
two jobs	
three jobs	
four jobs	
five jobs	

- A. Mastered
- B. Not Mastered

Answer: A

Explanation:

The pipeline contains

	▼
one stage	
two stages	
three stages	
four stages	
five stages	

Build\_vm contains

	▼
one job	
two jobs	
three jobs	
four jobs	
five jobs	

#### NEW QUESTION 224

DRAG DROP - (Topic 4)

You are creating a container for an ASP.NET Core app.

You need to create a Dockerfile file to build the image. The solution must ensure that the size of the image is minimized.

How should you configure the file? To answer, drag the appropriate values to the correct targets. Each value must be used once, more than once, or not at all. You may need to drag the split bar between panes or scroll to view content.

NOTE: Each correct selection is worth one point.

Values

dotnet publish -c Release -o out

dotnet restore

microsoft/dotnet:2.2-aspnetcore-runtime

Microsoft/dotnet:2.2-sdk

Answer Area

FROM  As build-env

COPY . /app/

WORKDIR /app

RUN

FROM

COPY --from=build-env /app/out /app

WORKDIR /app

ENTRYPOINT ["dotnet", "MvcMovie.dll"]

- A. Mastered
- B. Not Mastered

Answer: A

**Explanation:**

Box 1: microsoft.com/dotnet/sdk:2.3

The first group of lines declares from which base image we will use to build our container on top of. If the local system does not have this image already, then docker will automatically try and fetch it. The mcr.microsoft.com/dotnet/core/sdk:2.1 comes packaged with the .NET core 2.1 SDK installed, so it's up to the task of building ASP .NET core projects targeting version 2.1

Box 2: dotnet restore

The next instruction changes the working directory in our container to be /app, so all commands following this one execute under this context.

COPY \*.csproj ./ RUN dotnet restore

Box 3: microsoft.com/dotnet/2.2-aspnetcore-runtime

When building container images, it's good practice to include only the production payload and its dependencies in the container image. We don't want the .NET core SDK included in our final image because we only need the .NET core runtime, so the dockerfile is written to use a temporary container that is packaged with the SDK called build-env to build the app.

**NEW QUESTION 228**

DRAG DROP - (Topic 4)

You need to increase the security of your team's development process.

Which type of security tool should you recommend for each stage of the development process? To answer, drag the appropriate security tools to the correct stages. Each security tool may be used once, more than once, or not at all. You may need to drag the split bar between panes or scroll to view content

NOTE: Each correct selection is worth one point.

Security Tools	Answer Area
Penetration testing	Pull request: <input type="text"/>
Static code analysis	Continuous integration: <input type="text"/>
Threat modeling	Continuous delivery: <input type="text"/>

- A. Mastered
- B. Not Mastered

Answer: A

**Explanation:**

<https://docs.microsoft.com/en-us/azure/devops/migrate/security-validation-cicd-pipeline?view=azure-devops&viewFallbackFrom=vsts>

So:

PR: Static Code Analysis CI: Static Code Analysis CD: PenTest

**NEW QUESTION 229**

- (Topic 4)

You have several Azure Active Directory (Azure AD) accounts.

You need to ensure that users use multi-factor authentication (MFA) to access Azure apps from untrusted networks.

What should you configure in Azure AD?

- A. access reviews
- B. managed identities
- C. entitlement management
- D. conditional access

Answer: D

**Explanation:**

You can configure a Conditional Access policy that requires MFA for access from untrusted networks.

Reference:

<https://docs.microsoft.com/en-us/azure/active-directory/conditional-access/howto-conditional-access-policy-all-users-mfa>

**NEW QUESTION 234**

DRAG DROP - (Topic 4)

Your company wants to use Azure Application Insights to understand how user behaviors affect an application.

Which Application Insights tool should you use to analyze each behavior? To answer, drag the appropriate tools to the correct behaviors. Each tool may be used once, more than once, or not at all. You may need to drag the split bar between panes or scroll to view content.

NOTE: Each correct selection is worth one point.



Impact	Feature usage:	
User Flows	Number of people who used the actions and its features:	
Users	The effect that the performance of the application has on the usage of a page or a feature:	

- A. Mastered
- B. Not Mastered

**Answer:** A

**Explanation:**

Box 1: User Flows

The User Flows tool visualizes how users navigate between the pages and features of your site. It's great for answering questions like:

How do users navigate away from a page on your site? What do users click on a page on your site?

Where are the places that users churn most from your site?

Are there places where users repeat the same action over and over? Box 2: Users

Counting Users: The user behavior analytics tools don't currently support counting users or sessions based on properties other than anonymous user ID, authenticated user ID, or session ID.

Box 3: Impact

Impact analyzes how load times and other properties influence conversion rates for various parts of your app. To put it more precisely, it discovers how any dimension of a page view, custom event, or request affects the usage of a different page view or custom event.

**NEW QUESTION 235**

- (Topic 4)

You use GitHub for source control

You are evaluating whether to use proxying to add a private upstream MyGet package feed to your MyGet feed. What are two possible advantages of this approach? Each correct answer presents a complete solution.

NOTE: Each correct selection is worth one point.

- A. minimizes latency when accessing the package
- B. provides automatic authentication
- C. minimizes the impact on your storage quota
- D. minimizes the impact of upstream source availability issues

**Answer:** BC

**NEW QUESTION 236**

- (Topic 4)

You are designing the security validation strategy for a project in Azure DevOps.

You need to identify package dependencies that have known security issues and can be resolved by an update.

What should you use?

- A. Octopus Deploy
- B. Jenkins
- C. Gradle
- D. SonarQube

**Answer:** D

**Explanation:**

With enterprise level of SonarQube you can use OWASP that runs the security scans for known vulnerabilities. <https://www.sonarqube.org/features/security/>  
[https://www.sonarqube.org/features/security/owasp/?gclid=Cj0KCQiAzZL- BRDnARIsAPCJs70Teq0-efl2Hd\\_h-kykCB7l\\_C7L88Q7kpiuTzuD6Xw1jUb6ZqIP7O0aApVzEALw\\_wcB](https://www.sonarqube.org/features/security/owasp/?gclid=Cj0KCQiAzZL- BRDnARIsAPCJs70Teq0-efl2Hd_h-kykCB7l_C7L88Q7kpiuTzuD6Xw1jUb6ZqIP7O0aApVzEALw_wcB)

**NEW QUESTION 240**

DRAG DROP - (Topic 4)

You use GitHub Enterprise Server as a source code repository. You create an Azure DevOps organization named Contoso.

In the Contoso organization, you create a project named Project 1.

You need to link GitHub commits, pull requests, and issues to the work items of Project 1. The solution must use OAuth-based authentication

Which three actions should you perform in sequence? To answer, move the appropriate actions from the list of actions to the answer area and arrange them in the correct order.

Actions

From Project Settings in Azure DevOps, create a service hook subscription.

From Organization settings in Azure DevOps, add an OAuth configuration.

From Developer settings in GitHub Enterprise Server, register a new OAuth app.

From Project Settings in Azure DevOps, add a GitHub connection.

From Developer settings in GitHub Enterprise Server, generate a private key.

From Organization settings in Azure DevOps, connect to Azure Active Directory (Azure AD).

>

<

Answer Area

⬆

⬇

- A. Mastered  
B. Not Mastered

Answer: A

Explanation:

Step 1: From Developer settings in GitHub Enterprise Server, register a new OAuth app. If you plan to use OAuth to connect Azure DevOps Services or Azure DevOps Server with your GitHub Enterprise Server, you first need to register the application as an OAuth App

Step 2: Organization settings in Azure DevOps, add an OAuth configuration Register your OAuth configuration in Azure DevOps Services.

Note:

- ? Sign into the web portal for Azure DevOps Services.
- ? Add the GitHub Enterprise Oauth configuration to your organization.
- ? Open Organization settings>Oauth configurations, and choose Add Oauth configuration.
- ? Fill in the form that appears, and then choose Create.

Step 3: From Project Settings in Azure DevOps, add a GitHub connection. Connect Azure DevOps Services to GitHub Enterprise Server Choose the Azure DevOps logo to open Projects, and then choose the Azure Boards project you want to configure to connect to your GitHub Enterprise repositories.

Choose (1) Project Settings, choose (2) GitHub connections and then (3) Click here to connect to your GitHub Enterprise organization.

NEW QUESTION 241

DRAG DROP - (Topic 4)

You create a Git repository named Repo1 in Azure Repos.

You need to configure Repo1 to meet the following requirements:

- Work items must be linked to a pull request.
  - Pull requests must have a minimum of two reviewers.
- \* Pull requests must complete a code review by using a thirty-party tool. The solution must minimize administrative effort.

Which type of policy should you use for each requirement? To answer, drag the appropriate policy types to the correct requirements. Each policy type may be used once, more than once, or not at all.

You may need to drag the split bar between panes or scroll to view content.

Policies

Branch

Build

Check-in

Status

Answer Area

Work items must be linked to a pull request:

Pull requests must complete a code review by a third-party tool:

Pull requests must have a minimum of two reviewers:

- A. Mastered  
B. Not Mastered

Answer: A

Explanation:

Policies

Branch

Build

Check-in

Status

Answer Area

Work items must be linked to a pull request:

Pull requests must complete a code review by a third-party tool:

Pull requests must have a minimum of two reviewers:

Status

Branch

Branch

NEW QUESTION 245

HOTSPOT - (Topic 4)

Your company has an Azure subscription.

The company requires that all resource group in the subscription have a tag named organization set to a value of Contoso.

You need to implement a policy to meet the tagging requirement.

How should you complete the policy? To answer, select the appropriate options in the answer area.  
 NOTE: Each correct selection is worth one point.

```
{
  "policyRule": {
    "if": {
      "allOf": [
        {
          "field": "type",
          "equals":
          ,
          {
            "MicrosoftResources/deployments"
            "MicrosoftResources/subscriptions"
            "MicrosoftResources/subscriptions/resourceGroups"
          }
        }
      ],
      "not": {
        "field": "tags['organization']",
        "equals": "Contoso"
      }
    }
  },
  "then": {
    "effect":
    "details": [
      {
        "field": "tags['organization']",
        "value": "Contoso"
      }
    ]
  }
}
```

- A. Mastered
- B. Not Mastered

Answer: A

#### Explanation:

Box 1: " Microsoft.Resources/subscriptions/resourceGroups"

Box 2: "Deny",

Sample - Enforce tag and its value on resource groups

```
{
  "policyRule": { "if": {
    "allOf": [
      {
        "field": "type",
        "equals": "Microsoft.Resources/subscriptions/resourceGroups"
      },
      {
        "not": {
          "field": "[concat('tags['',parameters('tagName'), ']')]", "equals": "[parameters('tagValue')]"
        }
      }
    ]
  },
  "then": {
    "effect": "deny"
  }
}
```

References:

<https://docs.microsoft.com/en-us/azure/governance/policy/samples/enforce-tag-on-resource-groups>

#### NEW QUESTION 247

- (Topic 4)

You have an Azure subscription that contains multiple Azure pipelines.

You need to deploy a monitoring solution for the pipelines. The solution must meet the following requirements:

? Parse logs from multiple sources.

? identify the root cause of issues.

What advanced feature of a monitoring tool should include in the solution?

- A. directed monitoring
- B. synthetic monitoring
- C. analytics
- D. Alert Management

**Answer: B**

#### NEW QUESTION 250

DRAG DROP - (Topic 4)

You have a web app named App1 that is hosted on multiple servers. App1 uses Application Insights in Azure Monitor.

You need to compare the dairy CPU usage from the last week for all servers.

How should you complete the query? To answer, drag the appropriate values to the correct targets. Each value may be used once, more than once, or not at all.

You may need to drag the split bar between panes or scroll to view content

NOTE: Each correct selection is worth one point.

Values	Answer Area
bin(timestamp,id)	<pre> ... performanceCounters   where counter == "% Processor Time"   where timestamp &gt;= ago(7d)   summarize avg(value) by cloud_RoleInstance,    ... </pre>
bin(timestamp,ih)	
project timechart	
render chart	
render timechart	

- A. Mastered
- B. Not Mastered

**Answer: A**

#### Explanation:

<https://docs.microsoft.com/en-us/azure/azure-monitor/app/performance-counters>

#### NEW QUESTION 254

- (Topic 4)

You manage a project by using Azure Boards. You manage the project code by using GitHub.

You have three work items that have IDs of 456. 457. and 458.

You need to create a pull request that will be linked to all the work items. The solution must set the state of work item 456 to done.

What should you add to the commit message?

A)

Fixes #456, #457, #458

B)

Fixes #A8456, #A8457, #A8458

C)

#456, #457, #458  
Completed #456

D)

#A8456, #A8457, #A8458

- A. Option A
- B. Option B
- C. Option C
- D. Option D

**Answer: D**

#### NEW QUESTION 257

- (Topic 4)

Your company creates a web application.

You need to recommend a solution that automatically sends to Microsoft Teams a dairy summary of the exceptions that occur m the application.

Which two Azure services should you recommend? Each correct answer presents part of the solution.

NOTE: Each correct selection is worth one point.

- A. Microsoft Visual Studio App Center
- B. Azure DevOps Project
- C. Azure Logic Apps
- D. Azure Pipelines
- E. Azure Application Insights

**Answer: CE**



**Explanation:**

References:

<https://docs.microsoft.com/en-us/azure/azure-monitor/app/asp-net-exceptions> <https://docs.microsoft.com/en-us/azure/azure-monitor/app/automate-custom-reports>

**NEW QUESTION 258**

- (Topic 4)

You are building a Microsoft ASP.NET application that requires authentication.

You need to authenticate users by using Azure Active Directory (Azure AD). What should you do first?

- A. Create a membership database in an Azure SQL database.
- B. Assign an enterprise application to users and groups.
- C. Create an app registration in Azure AD.
- D. Configure the application to use a SAML endpoint.
- E. Create a new OAuth token from the application.

**Answer: C**

**Explanation:**

Register your application to use Azure Active Directory. Registering the application means that your developers can use Azure AD to authenticate users and request access to user resources such as email, calendar, and documents.

Reference:

<https://docs.microsoft.com/en-us/azure/active-directory/manage-apps/developer-guidance-for-integrating-applications>

<https://docs.microsoft.com/en-us/azure/active-directory/develop/quickstart-v2-aspnet-webapp>

**NEW QUESTION 263**

DRAG DROP - (Topic 4)

You are planning projects for three customers. Each customer's preferred process for work items is shown in the following table.

Customer name	Preferred process
Litware, Inc.	Track product backlog items (PBIs) and bugs on the Kanban board. Break the PBIs down into tasks on the task board.
Contoso, Ltd.	Track user stories and bugs on the Kanban board. Track the bugs and tasks on the task board.
A. Datum Corporation	Track requirements, change requests, risks, and reviews.

The customers all plan to use Azure DevOps for work item management.

Which work item process should you use for each customer? To answer, drag the appropriate work item process to the correct customers. Each work item process may be used once, more than once, or not at all. You may need to drag the split bar between panes or scroll to view content.

NOTE: Each correct selection is worth one point.

Processes	Answer Area
Agile	Litware <input type="text"/>
CMMI	Contoso: <input type="text"/>
Scrum	A. Datum: <input type="text"/>
XP	

- A. Mastered
- B. Not Mastered

**Answer: A**

**Explanation:**

Box 1: Scrum

Choose Scrum when your team practices Scrum. This process works great if you want to track product backlog items (PBIs) and bugs on the Kanban board, or break PBIs and bugs down into tasks on the taskboard.

Box 2: Agile

Choose Agile when your team uses Agile planning methods, including Scrum, and tracks development and test activities separately. This process works great if you want to track user stories and (optionally) bugs on the Kanban board, or track bugs and tasks on the taskboard.

Box 3: CMMI

Choose CMMI when your team follows more formal project methods that require a framework for process improvement and an auditable record of decisions. With this process, you can track requirements, change requests, risks, and reviews.

**NEW QUESTION 268**

- (Topic 4)

You are automating the testing process for your company. You need to automate UI testing of a web application. Which framework should you use?

- A. JaCoco
- B. Playwright
- C. Xamarin.UITest
- D. Microsoft.CodeAnalysis

**Answer:** B

**Explanation:**

Performing user interface (UI) testing as part of the release pipeline is a great way of detecting unexpected changes, and need not be difficult. Selenium can be used to test your website during a continuous deployment release and test automation.

References:

<https://docs.microsoft.com/en-us/azure/devops/pipelines/test/continuous-test-selenium?view=azure-devops>

**NEW QUESTION 269**

HOTSPOT - (Topic 4)

You have an Azure web app named Webapp1.

You need to use an Azure Monitor query to create a report that details the top 10 pages of Webapp1 that failed.

How should you complete the query? To answer, select the appropriate options in the answer area.

NOTE: Each correct selection is worth one point.

exceptions

pageViews

requests

traces

| where

duration == 0

itemType == "availabilityResult"

resultCode == "200"

success == false

```
| summarize failedCount=sum(itemCount) by name, resultCode
| top 10 by failedCount desc
| render barchart
```

- A. Mastered
- B. Not Mastered

**Answer:** A

**Explanation:**

Box 1: requests

Failed requests (requests/failed):

The count of tracked server requests that were marked as failed. Kusto code:

requests

| where success == 'False' Box 2: success == false

**NEW QUESTION 270**

- (Topic 4)

Note: This question is part of a series of questions that present the same scenario. Each question in the series contains a unique solution that might meet the stated goals. Some question sets might have more than one correct solution, while others might not have a correct solution.

After you answer a question in this section, you will NOT be able to return to it. As a result, these questions will not appear in the review screen.

Your company uses Azure DevOps to manage the build and release processes for applications.

You use a Git repository for applications source control.

You need to implement a pull request strategy that reduces the history volume in the master branch.

Solution: You implement a pull request strategy that uses fast-forward merges. Does this meet the goal?

- A. Yes
- B. No

**Answer:** A

**Explanation:**

No fast-forward merge - This option merges the commit history of the source branch when the pull request closes and creates a merge commit in the target branch.

Reference:

<https://docs.microsoft.com/en-us/azure/devops/repos/git/branch-policies>

**NEW QUESTION 274**

- (Topic 4)

You have an Azure DevOps organization named Contoso and an Azure subscription.  
You use Azure DevOps to build a containerized app named Appl and deploy App1 to an Azure container instance named ACM.  
You need to restart ACI1 when App1 stops responding. What should you do?

- A. Add a liveness probe to the YAML configuration of App1.
- B. Use Connection Monitor in Azure Network Watcher.
- C. Add a readiness probe to the YAML configuration of App1.
- D. Use IP flow verify in Azure Network Watcher.

Answer: A

Explanation:  
<https://docs.microsoft.com/en-us/azure/container-instances/container-instances-liveness-probe>

NEW QUESTION 279

DRAG DROP - (Topic 3)  
You are configuring the Azure DevOps dashboard. The solution must meet the technical requirements.  
Which widget should you use for each metric? To answer, drag the appropriate widgets to the correct metrics. Each widget may be used once, more than once, or not at all. You may need to drag the split bar between panes or scroll to view content.  
NOTE: Each correct selection is worth one point.

Widgets

Velocity

Query tile

Query results

Sprint burndown

Cumulative flow diagram

Release pipeline overview

Metrics

1:

2:

3:

- A. Mastered
- B. Not Mastered

Answer: A

Explanation:  
Woodgrove Bank identifies the following technical requirements:  
? The Azure DevOps dashboard must display the metrics shown in the following table:  
Box 1: Velocity  
Velocity displays your team velocity. It shows what your team delivered as compared to plan.  
Box 2: Release pipeline overview  
Release pipeline overview shows the status of environments in a release definition.  
Box 3: Query tile  
Query tile displays the total number of results from a query.

NEW QUESTION 282

DRAG DROP - (Topic 3)  
You need to replace the existing DevOps tools to support the planned changes.  
What should you use? To answer, drag the appropriate tools to the correct targets. Each tool may be used once, more than once, or not at all. You may need to drag the split bar between panes or scroll to view content.  
NOTE: Each correct selection is worth one point.

Tools	Answer Area
Azure Boards	Trello: <input type="text" value="Tool"/>
Azure Artifacts	Bamboo: <input type="text" value="Tool"/>
GitHub Actions	BitBucket: <input type="text" value="Tool"/>
Azure Pipelines	
Azure Test Plans	
GitHub repositories	

- A. Mastered  
B. Not Mastered

**Answer:** A

**Explanation:**

Box 1: Azure Boards

Azure Boards can be used to track work with Kanban boards, backlogs, team dashboards, and custom reporting

You can create multiple Trello boards, which are spaces to store tasks (for different work contexts, or even private boards)

You can easily share Trello boards with another person.

Box 2: Azure Pipelines

You can use Bamboo to implement CI/CD (Continuous Integration and Continuous Delivery) for a simple Azure function app using Atlassian Bamboo. Bamboo does continuous delivery of the project from source code to deployment. It has stages including Build, Test and Deploy.

Software teams in every industry are upgrading their continuous delivery pipeline with Bamboo. Easy build import from popular open source tools, user and group import from JIRA, seamless integration with Bitbucket, and native support for Git, Hg, and SVN means you'll be building and deploying like a champ.

Box 3: GitHub repositories

Bitbucket can be used as the Git repository, but you can use any other Git repository (Like TFS Git) for source control of the code.

**NEW QUESTION 286**

HOTSPOT - (Topic 3)

You need to configure the alert for VM1. The solution must meet the technical requirements.

Which two settings should you configure? To answer, select the appropriate settings in the answer area.

NOTE: Each correct selection is worth one point.

Alert logic

Threshold ⓘ

Static Dynamic

Operator ⓘ

Greater than ▾

Aggregation type \* ⓘ

Average ▾

Threshold value \* ⓘ

▾ %

Condition preview

Whenever the average percentage cpu is greater than <logic undefined> %

Evaluated based on

Aggregation granularity (Period) \* ⓘ

5 minutes ▾

Frequency of evaluation ⓘ

Every 1 Minute ▾

- A. Mastered  
B. Not Mastered

**Answer:** A

**Explanation:**

Setting 1: Threshold value Set to 80 %

Scenario: An Azure Monitor alert for VM1 must be configured to meet the following requirements:

? Be triggered when average CPU usage exceeds 80 percent for 15 minutes.

? Calculate CPU usage averages once every minute.

Setting 2: Aggregation granularity Set to 15 minutes.

**NEW QUESTION 291**

- (Topic 3)

You plan to deploy a new database environment. The solution must meet the technical requirements. You need to prepare the database for the deployment. How should you format the export?



- A. NDF
- B. MDF
- C. BACPAC
- D. DACPAC

Answer: D

NEW QUESTION 296

DRAG DROP - (Topic 2)

You need to implement the code flow strategy for Project2 in Azure DevOps.

Which three actions should you perform in sequence? To answer, move the appropriate actions from the list of actions to the answer area and arrange them in the correct order.

Actions

Create a repository

Add a build policy for the fork.

Create a branch.

Add a build policy for the master branch.

Add an application access policy.

Create a fork.

Answer Area

- A. Mastered
- B. Not Mastered

Answer: A

Explanation:

Actions

Create a repository

Add a build policy for the fork.

Create a branch.

Add a build policy for the master branch.

Add an application access policy.

Create a fork.

Answer Area

Create a repository

Add a build policy for the master branch.

Create a branch.

NEW QUESTION 297

HOTSPOT - (Topic 1)

How should you complete the code to initialize App Center in the mobile application? To answer, select the appropriate options in the answer area.

NOTE: Each correct selection a worth one point.

MSAppCenter.start

( "{Your App Secret}",

withServices:

)

[MSAnalytics.self,

[MSDistribute.self,

[MSPush.self,

MSAnalytics.self]

MSCrashes.self]

MSDistribute.self]

- A. Mastered
- B. Not Mastered

Answer: A

Explanation:

Scenario: Visual Studio App Center must be used to centralize the reporting of mobile application crashes and device types in use.

In order to use App Center, you need to opt in to the service(s) that you want to use, meaning by default no services are started and you will have to explicitly call each of them when starting the SDK.

Insert the following line to start the SDK in your app's App Delete class in the didFinishLaunchingWithOptions method.

MSAppCenter.start("{Your App Secret}", withServices: [MSAnalytics.self, MSCrashes.self]) References: <https://docs.microsoft.com/en-us/appcenter/sdk/getting-started/ios>

### NEW QUESTION 302

HOTSPOT - (Topic 1)

Where should the build and release agents for the investment planning application suite run? To answer, select the appropriate options in the answer area.

NOTE: Each correct selection is worth one point.

Build agent:

- A hosted service
- A source control system
- The developers' computers

Release agent:

- A hosted service
- A source control system
- The developers' computers

- A. Mastered
- B. Not Mastered

**Answer:** A

#### Explanation:

Box 1: A source control system

A source control system, also called a version control system, allows developers to collaborate on code and track changes. Source control is an essential tool for multi- developer projects.

Box 2: A hosted service

To build and deploy Xcode apps or Xamarin.iOS projects, you'll need at least one macOS agent. If your pipelines are in Azure Pipelines and a Microsoft-hosted agent meets your needs, you can skip setting up a self-hosted macOS agent.

Scenario: The investment planning applications suite will include one multi-tier web application and two iOS mobile applications. One mobile application will be used by employees; the other will be used by customers.

References:

<https://docs.microsoft.com/en-us/azure/devops/pipelines/agents/v2-osx?view=azure-devops>

### NEW QUESTION 305

HOTSPOT - (Topic 1)

HOTSPOT

You have an Azure virtual machine named VM1 that runs Linux.

You plan to deploy the Desired State Configuration (DSC) extension to VM1. You need to grant the Log Analytics agent the appropriate directory permissions.

How should you complete the command? To answer, select the appropriate options in the answer area.

NOTE: Each correct selection is worth one point.

setfacl -m u:omsagent:

<input type="text" value=""/>	<input type="text" value=""/>
r	/lib
x	/etc
rx	/tmp
rwX	/usr

- A. Mastered
- B. Not Mastered

**Answer:** A

#### Explanation:

Box 1: rwx

The Log Analytics agent for Linux runs as the omsagent user. To grant >write permission to the omsagent user, run the command setfacl -m u:omsagent:rwx /tmp.

Box 2: /tmp

Deploying DSC to a Linux node uses the /tmp folder.

### NEW QUESTION 310

- (Topic 1)

Which branching strategy should you recommend for the investment planning applications suite?

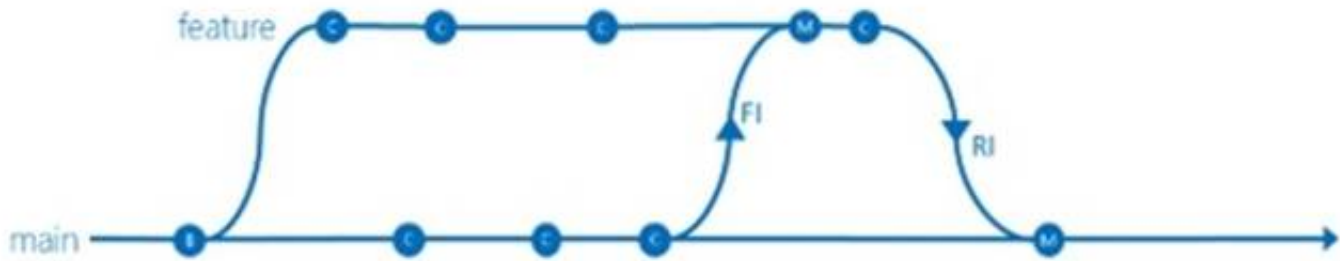
- A. release isolation
- B. main only
- C. development isolation
- D. feature isolation

**Answer:** D

#### Explanation:

Scenario: A branching strategy that supports developing new functionality in isolation must be used.

Feature isolation is a special derivation of the development isolation, allowing you to branch one or more feature branches from main, as shown, or from your dev branches.



When you need to work on a particular feature, it might be a good idea to create a feature branch.

NEW QUESTION 311

HOTSPOT - (Topic 1)

How should you configure the release retention policy for the investment planning applications suite? To answer, select the appropriate options in the answer area.  
NOTE: Each correct selection is worth one point.

Global release:

Set the default retention policy to 30 days.

Set the maximum retention policy to 30 days.

Set the stage retention policy to 30 days.

Set the stage retention policy to 60 days.

Production stage:

Set the default retention policy to 30 days.

Set the maximum retention policy to 60 days.

Set the stage retention policy to 30 days.

Set the stage retention policy to 60 days.

- A. Mastered
- B. Not Mastered

Answer: A

Explanation:

Scenario: By default, all releases must remain available for 30 days, except for production releases, which must be kept for 60 days.  
Box 1: Set the default retention policy to 30 days  
The Global default retention policy sets the default retention values for all the build pipelines. Authors of build pipelines can override these values.  
Box 2: Set the stage retention policy to 60 days  
You may want to retain more releases that have been deployed to specific stages. References: <https://docs.microsoft.com/en-us/azure/devops/pipelines/policies/retention>

NEW QUESTION 316

SIMULATION - (Topic 4)

You plan to deploy a runbook that will create Azure AD user accounts.  
You need to ensure that runbooks can run the Azure PowerShell cmdlets for Azure Active Directory.  
To complete this task, sign in to the Microsoft Azure portal.

- A. Mastered
- B. Not Mastered

Answer: A

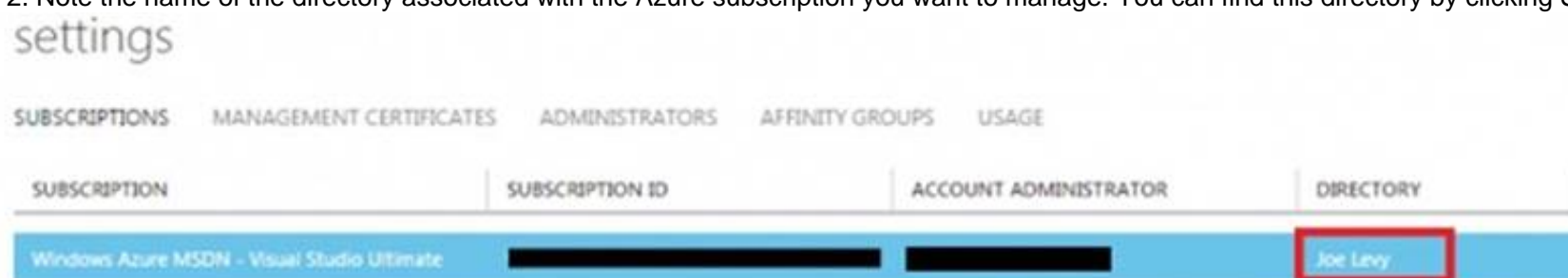
Explanation:

Azure Automation now ships with the Azure PowerShell module of version 0.8.6, which introduced the ability to non-interactively authenticate to Azure using OrgId (Azure Active Directory user) credential-based authentication. Using the steps below, you can set up Azure Automation to talk to Azure using this authentication type.  
Step 1: Find the Azure Active Directory associated with the Azure subscription to manage:  
\* 1. Log in to the Azure portal as the service administrator for the Azure subscription you want to manage using Azure Automation. You can find this user by logging in to the Azure portal as any user with access to this Azure subscription, then clicking Settings, then Administrators.





\* 2. Note the name of the directory associated with the Azure subscription you want to manage. You can find this directory by clicking Settings, then Subscriptions.



Step 2: Create an Azure Active Directory user in the directory associated with the Azure subscription to manage:

You can skip this step if you already have an Azure Active Directory user in this directory. and plan to use this OrgId to manage Azure.

\* 1. In the Azure portal click on Active Directory service.





- \* 2. Click the directory name that is associated with this Azure subscription.
  - \* 3. Click on the Users tab and then click the Add User button.
  - \* 4. For type of user, select "New user in your organization." Enter a username for the user to create.
  - \* 5. Fill out the user's profile. For role, pick "User." Don't enable multi-factor authentication. Multi-factor accounts cannot be used with Azure Automation.
  - \* 6. Click Create.
  - \* 7. Jot down the full username (including part after @ symbol) and temporary password.
- Step 3: Allow this Azure Active Directory user to manage this Azure subscription.
- \* 1. Click on Settings (bottom Azure tab under StorSimple)



- \* 2. Click Administrators
- \* 3. Click the Add button. Type the full user name (including part after @ symbol) of the Azure Active Directory user you want to set up to manage Azure. For subscriptions, choose the Azure subscriptions you want this user to be able to manage. Click the check mark.

Step 4: Configure Azure Automation to use this Azure Active Directory user to manage this Azure subscription  
 Create an Azure Automation credential asset containing the username and password of the Azure Active Directory user that you have just created. You can create a credential asset in Azure Automation by clicking into an Automation Account and then clicking the Assets tab, then the Add Setting button.

Note: Once you have set up the Azure Active Directory credential in Azure and Azure Automation, you can now manage Azure from Azure Automation runbooks using this credential.

References:

<https://azure.microsoft.com/sv-se/blog/azure-automation-authenticating-to-azure-using-azure-active-directory/>

#### NEW QUESTION 320

HOTSPOT - (Topic 4)

You are designing YAML-based Azure pipelines for the apps shown in the following table.

Name	Platform	Release requirements
App1	Azure virtual machine	Replace a fixed set of existing instances of the previous version of App1 with instances of the new version of the app in each iteration.
App2	Azure Kubernetes Service (AKS) cluster	Roll out a limited deployment of the new version of App2 to validate the functionality of the app. Once testing is successful, expand the rollout.

You need to configure the YAML strategy value for each app. The solution must minimize app downtime.

Which value should you configure for each app? To answer, select the appropriate options in the answer area.

NOTE: Each correct selection is worth one point.

App1:

▼

canary

rolling

runonce

App2:

▼

canary

rolling

runonce

- A. Mastered
- B. Not Mastered

Answer: A

#### Explanation:

App1: rolling

A rolling deployment replaces instances of the previous version of an application with instances of the new version of the application on a fixed set of virtual machines (rolling set) in each iteration.

App2: canary

Canary deployment strategy is an advanced deployment strategy that helps mitigate the risk involved in rolling out new versions of applications. By using this strategy, you can roll out the changes to a small subset of servers first. As you gain more confidence in the new version, you can release it to more servers in your infrastructure and route more traffic to it.

### NEW QUESTION 322

- (Topic 4)

Your company plans to use an agile approach to software development

You need to recommend an application to provide communication between members of the development team who work in locations around the world. The application must meet the following requirements:

- Provide the ability to isolate the members of efferent project teams into separate communication channels and to keep a history of the chats within those channels.
- Be available on Windows 10, Mac OS, iOS, and Android operating systems.
- Provide the ability to add external contractors and suppliers to projects.
- Integrate directly with Azure DevOps. What should you recommend?

- A. Octopus
- B. Bamboo
- C. Microsoft Project
- D. Slack

**Answer:** D

#### Explanation:

Slack is a popular team collaboration service that helps teams be more productive by keeping all communications in one place and easily searchable from virtually anywhere. All your messages, your files, and everything from Twitter, Dropbox, Google Docs, Azure DevOps, and more all together. Slack also has fully native apps for iOS and Android to give you the full functionality of Slack wherever you go.

Integrated with Azure DevOps

This integration keeps your team informed of activity happening in its Azure DevOps projects. With this integration, code check-ins, pull requests, work item updates, and build events show up directly in your team's Slack channel.

Note: Microsoft Teams would also be a correct answer, but it is not an option here. References:

<https://marketplace.visualstudio.com/items?itemName=ms-vsts.vss-services-slack>

### NEW QUESTION 326

HOTSPOT - (Topic 4)

You use Get for source control.

You need to optimize the performance of a repository. The solution must meet the following requirements:

? Permanently remove all items referenced only in the ref log.

? Remove history that is NOT in any current branch.

How should you complete the command? To answer, select the appropriate options in the answer area.

git

gc  
**reflog**  
reset  
stash

git

gc  
init  
reflog  
**reset**

expire --expire-unreachable=now --all

--prune=

all  
now  
**reset**  
true

- A. Mastered
- B. Not Mastered

**Answer:** A

#### Explanation:



### NEW QUESTION 330

- (Topic 4)

After you answer a question in this section, you will NOT be able to return to it As a result, these questions will not appear in the review screen.

You use Azure Pipelines to build and test a React js application You have a pipeline that has a single job.

You discover that installing JavaScript packages from npm takes approximately five minutes each time you run the pipeline.

You need to recommend a solution to reduce the pipeline execution time. Solution: You recommend enabling pipeline caching.

Does this meet the goal?

- A. Yes
- B. No

**Answer:** A

#### Explanation:

npm-cache is a command line utility that caches dependencies installed via npm, bower, jspm and composer.

It is useful for build processes that run [npm|bower|composer|jspm] install every time as part of their build process. Since dependencies don't change often, this often means slower build times. npm-cache helps alleviate this problem by caching previously installed dependencies on the build machine.

Reference: <https://www.npmjs.com/package/npm-cache>

### NEW QUESTION 334

HOTSPOT - (Topic 4)

You have a virtual machine that runs Windows Server 2019 and is managed by using Desired State Configuration (DSC).

You have the following DSC configuration.

```
configuration WebConfiguration
{
    File WebsiteContent {
        Ensure          = 'Present'
        SourcePath       = 'c:\test\index.htm'
        DestinationPath = 'c:\inetpub\wwwroot'
        DependsOn       = '[WindowsFeature]Web-Server'
    }

    WindowsFeature Web-Server
    {
        Ensure = 'Present'
        Name   = 'Web-Server'
    }
}
```

You have the following Local Configuration Manager (LCM) configuration.



```
LocalConfigurationManager
{
    ConfigurationMode = "ApplyAndMonitor"
    RefreshFrequencyMins = 30
    ConfigurationModeFrequencyMins = 60
    RefreshMode = 'Push'
}
```

For each of the following statements, select Yes if the statement is true. Otherwise, select No.

NOTE: Each correct selection is worth one point.

Statements	Yes	No
The Index.htm file will be copied to the C:\Test folder before the Web-Server Windows feature is installed.	<input type="radio"/>	<input type="radio"/>
If manual changes are made to the configuration of the virtual machine, the configuration will reapply automatically.	<input type="radio"/>	<input type="radio"/>
If the Web-Server Windows feature is uninstalled from the virtual machine, the discrepancy will be reported in a log entry within 60 minutes.	<input type="radio"/>	<input type="radio"/>

- A. Mastered
- B. Not Mastered

**Answer:** A

#### Explanation:

No "Dependson are defined" No "Mode is Apply and Monitor"

Yes "Configuration Mode FreqMin : 60 "

-----

Configuration Mode Freq Min:How often, in minutes, the current configuration is checked and applied. This property is ignored if the Configuration Mode property is set to Apply Only.

[https://docs.microsoft.com/en-us/powershell/dsc/managing-nodes/metaconfig?view=dsc- 1.1](https://docs.microsoft.com/en-us/powershell/dsc/managing-nodes/metaconfig?view=dsc-1.1)

[https://docs.microsoft.com/en-us/powershell/dsc/configurations/resource-depends- on?view=dsc-1.1](https://docs.microsoft.com/en-us/powershell/dsc/configurations/resource-depends-on?view=dsc-1.1)

#### NEW QUESTION 335

- (Topic 4)

You have a project in Azure DevOps named Project1. Project1 contains a build pipeline named Pipe1 that builds an application named Appl.

You have an agent pool named Pool1 that contains a Windows Server 2019-based self- hosted agent. Pipe1 uses Pool1.

You plan to implement another project named Project2. Project2 will have a build pipeline named Pipe2 that builds an application named App2.

App1 and App2 have conflicting dependencies.

You need to minimize the possibility that the two build pipelines will conflict with each other. The solution must minimize infrastructure costs.

What should you do?

- A. Create two container jobs.
- B. Change the self-hosted agent to use Red Hat Enterprise Linux (RHEL) 9.
- C. Add another self-hosted agent
- D. Add a Docker Compose task to the build pipelines.

**Answer:** A

#### NEW QUESTION 337

- (Topic 4)

Your team uses an agile development approach.

You need to recommend a branching strategy for the team's Git repository. The strategy must meet the following requirements.

Provide the ability to work on multiple independent tasks in parallel. Ensure that checked-in code remains in a releasable state always. Ensure that new features can be abandoned at any time. Encourage experimentation.

What should you recommend?

- A. a single long-running branch
- B. multiple long-running branches
- C. a single fork per team member
- D. a single-running branch with multiple short-lived topic branches

**Answer:** D

#### NEW QUESTION 341

SIMULATION - (Topic 4)

You need to create and configure an Azure Storage account named az400lod11566895stor in a resource group named RG1lod11566895 to store the boot diagnostics for a virtual machine named VM1.

To complete this task, sign in to the Microsoft Azure portal.

- A. Mastered
- B. Not Mastered

**Answer:** A

**Explanation:**

Step 1: To create a general-purpose v2 storage account in the Azure portal, follow these steps:

? On the Azure portal menu, select All services. In the list of resources, type Storage Accounts. As you begin typing, the list filters based on your input. Select Storage Accounts.

? On the Storage Accounts window that appears, choose Add.

? Select the subscription in which to create the storage account.

? Under the Resource group field, select RG1lod11566895

? Next, enter a name for your storage account named: az400lod11566895stor

? Select Create.

Step 2: Enable boot diagnostics on existing virtual machine

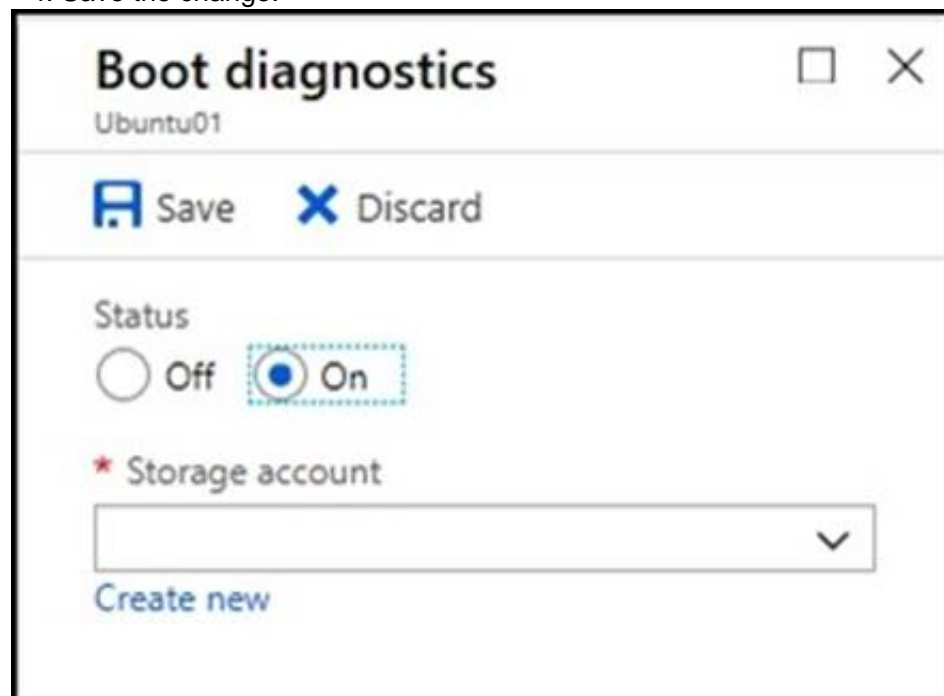
To enable Boot diagnostics on an existing virtual machine, follow these steps:

\* 1. Sign in to the Azure portal, and then select the virtual machine VM1.

\* 2. In the Support + troubleshooting section, select Boot diagnostics, then select the Settings tab.

\* 3. In Boot diagnostics settings, change the status to On, and from the Storage account drop-down list, select the storage account az400lod11566895stor.

\* 4. Save the change.



You must restart the virtual machine for the change to take effect.

**NEW QUESTION 346**

- (Topic 4)

You have an Azure subscription that contains multiple Azure pipelines.

You need to deploy a monitoring solution for the pipelines. The solution must meet the following requirements:

- Parse logs from multiple sources
- Identify the root cause of issues.

What advanced feature of a monitoring tool should you include in the solution?

- A. synthetic monitoring
- B. Alert Management
- C. analytics
- D. directed monitoring

**Answer:** C

**Explanation:**

An analytics feature in a monitoring solution would allow you to parse logs from multiple sources and analyze them to identify the root cause of issues in your Azure pipelines. This feature would typically provide tools for searching, filtering, and visualizing log data, as well as for identifying patterns and anomalies. With analytics, you can also create custom dashboards and alerts to monitor your pipelines and quickly identify and troubleshoot any issues.

**NEW QUESTION 350**

- (Topic 4)

You have a web app hosted on Azure App Service. The web app stores data in an Azure SQL database.

You need to generate an alert when there are 10,000 simultaneous connections to the database. The solution must minimize development effort.

Which option should you select in the Diagnostics settings of the database?

- A. Send to Log Analytics
- B. Stream to an event hub
- C. Archive to a storage account

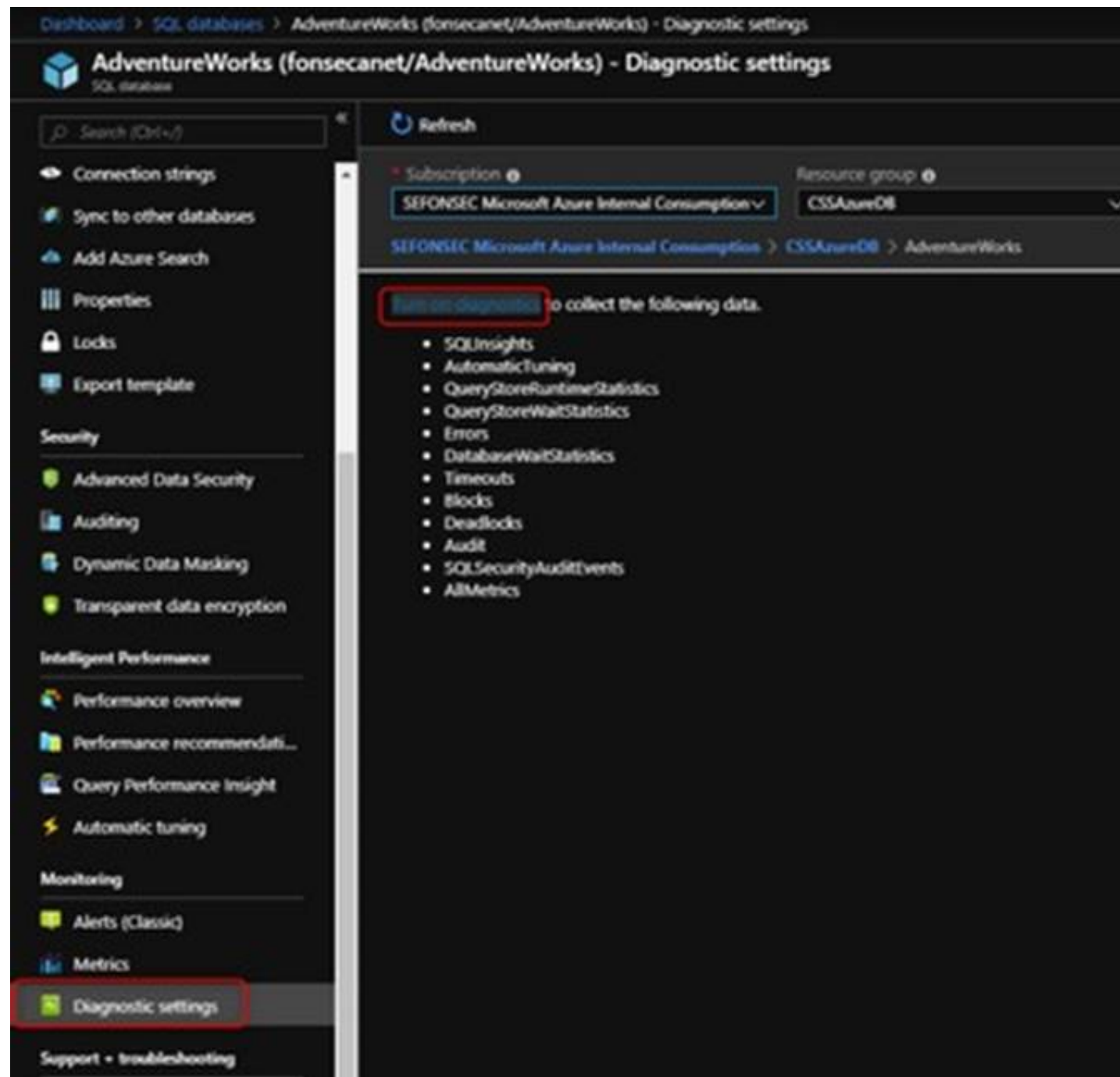
**Answer:** A

**Explanation:**

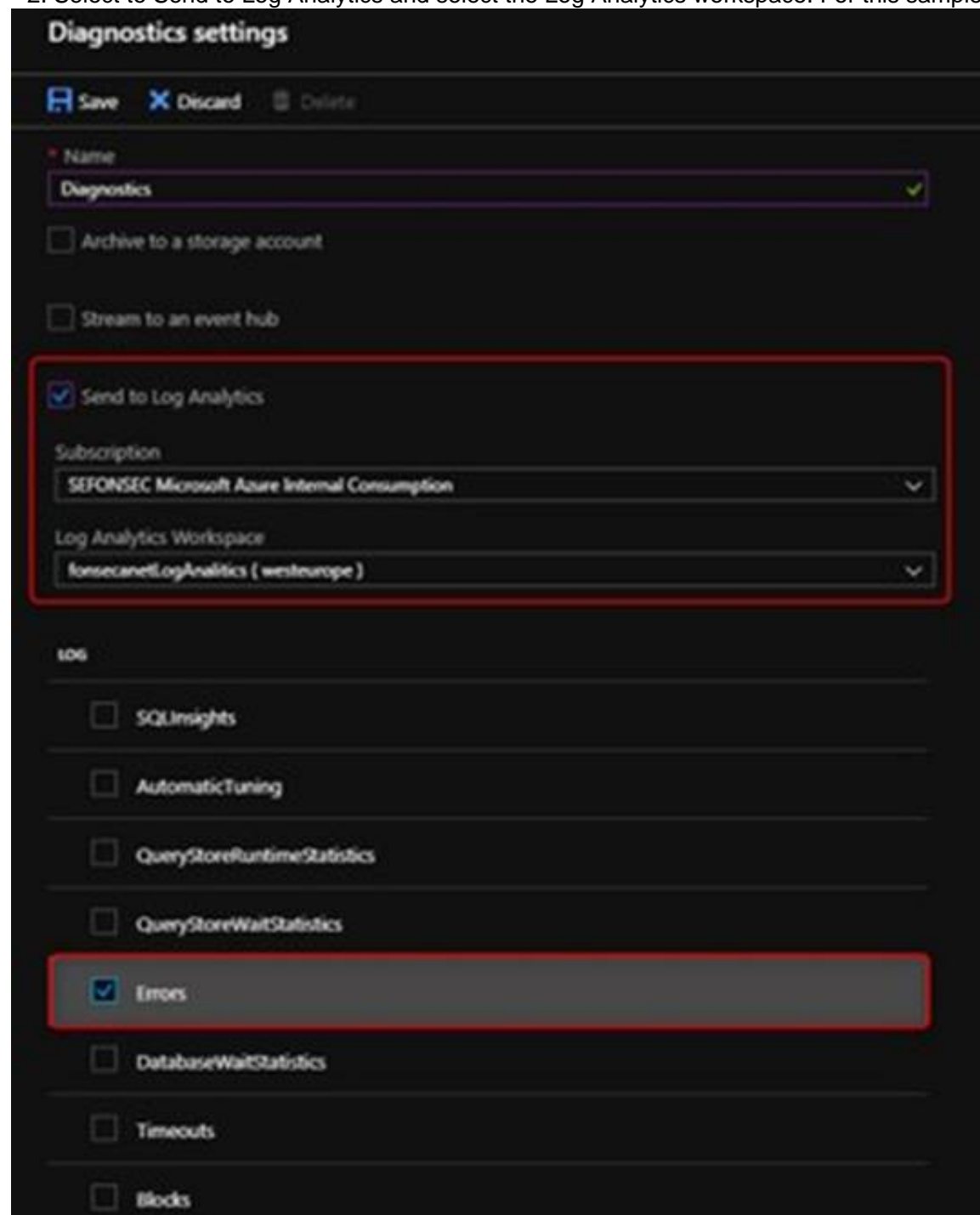
ENABLE DIAGNOSTICS TO LOG ANALYTICS

This configuration is done PER DATABASE

\* 1. Click on Diagnostics Settings and then Turn On Diagnostics



\* 2. Select to Send to Log Analytics and select the Log Analytics workspace. For this sample I will selected only Errors



Graphical user interface Description automatically generated with medium confidence

Reference:

<https://techcommunity.microsoft.com/t5/azure-database-support-blog/azure-sql-db-and-log-analytics-better-together-part-1/ba-p/794833>

### NEW QUESTION 353

HOTSPOT - (Topic 4)

Your company uses Git as a source code control system for a complex app named App1. You plan to add a new functionality to App1.

You need to design a branching model for the new functionality.

Which branch lifetime and branch time should you use in the branching model? To answer, select the appropriate options in the answer area.

NOTE: Each correct selection is worth one point.

Branch lifetime:

	▼
Long-lived	
Short-lived	

Branch type:

	▼
Master	
Feature	
Integration	

- A. Mastered
- B. Not Mastered

**Answer:** A

#### Explanation:

Branch lifetime: Short-lived

Branch type: Feature

Feature branches are used when developing a new feature or enhancement which has the potential of a development lifespan longer than a single deployment. When starting development, the deployment in which this feature will be released may not be known. No matter when the feature branch will be finished, it will always be merged back into the master branch.

References: <https://gist.github.com/digitaljhelms/4287848>

### NEW QUESTION 356

- (Topic 4)

Note: This question is part of a series of questions that present the same scenario. Each question in the series contains a unique solution that might meet the stated goals. Some question sets might have more than one correct solution, while others might not have a correct solution.

After you answer a question in this section, you will NOT be able to return to it. As a result, these questions will not appear in the review screen.

The lead developer at your company reports that adding new application features takes longer than expected due to a large accumulated technical debt.

You need to recommend changes to reduce the accumulated technical debt. Solution: You recommend increasing the test coverage.

Does this meet the goal?

- A. Yes
- B. No

**Answer:** B

#### Explanation:

Instead reduce the code complexity. Reference:

<https://dzone.com/articles/fight-through-the-pain-how-to-deal-with-technical>

### NEW QUESTION 358

DRAG DROP - (Topic 4)

You use Azure Pipelines to automate Continuous Integration/Continuous Deployment (CI/CD) for an Azure web app named WebApp1.

You configure an Azure Monitor alert that is triggered when WebApp1 generates an error. You need to configure the alert to forward details of the error to a third-party system. The

solution must minimize administrative effort.

Which three actions should you perform in sequence? To answer, move the appropriate actions from the list of actions to the answer area and arrange them in the correct order.



## Actions

## Answer Area

Select the Recurrence trigger.

Create an Azure event hub.

Create an Azure logic app.

Select the HTTP request trigger.

Update the action group in Azure Monitor.

Select the Sliding Window trigger.



- A. Mastered
- B. Not Mastered

**Answer:** A

### Explanation:

Graphical user interface,  
text, application  
Description automatically generated  
Box 1: Create an Azure logic app.  
Box 2: Select the HTTP request trigger.  
Box 3: Updated the action group in Azure Monitor.

### NEW QUESTION 360

- (Topic 4)  
You have a GitHub repository.  
You create a new repository in Azure DevOps.  
You need to recommend a procedure to clone the repository from GitHub to Azure DevOps.  
What should you recommend?

- A. Create a pull request.
- B. Create a webhook.
- C. Create a service connection for GitHub.
- D. From Import a Git repository, click Import.
- E. Create a personal access token in Azure DevOps.

**Answer:** D

### Explanation:

You can import an existing Git repo from GitHub, Bitbucket, GitLab, or other location into a new or empty existing repo in your project in Azure DevOps.  
Import into a new repo  
? Select Repos, Files.  
? From the repo drop-down, select Import repository.  
? If the source repo is publicly available, just enter the clone URL of the source repository and a name for your new Git repository.  
References:  
<https://docs.microsoft.com/en-us/azure/devops/repos/git/import-git-repository?view=azure-devops>

### NEW QUESTION 365

- (Topic 4)  
You are integrating an Azure Boards project and a GitHub repository. You need to authenticate Azure Boards to GitHub.  
Which two authentication methods can you use? Each correct answer presents a complete solution.  
NOTE: Each correct selection is worth one point.

- A. a trusted root certificate
- B. a publisher certificate
- C. Azure Active Directory (Azure AD)
- D. GitHub user credentials
- E. a personal access token (PAT)

**Answer:** CD

### NEW QUESTION 370

SIMULATION - (Topic 4)  
You have an Azure function hosted in an App Service plan named az400-9940427-func1.

You need to configure az400-9940427-func1 to upgrade the functions automatically whenever new code is committed to the master branch of <https://github.com/Azure-Samples/functions-quickstart>.  
To complete this task, sign in to the Microsoft Azure portal.

- A. Mastered
- B. Not Mastered

**Answer:** A

**Explanation:**

- \* 1. Open Microsoft Azure Portal
- \* 2. Log into your Azure account, select App Services in the Azure portal left navigation, and then select configure az400-9940427-func1.
- \* 3. On the app page, select Deployment Center in the left menu.
- \* 4. On the Build provider page, select Azure Pipelines (Preview), and then select Continue.
- \* 5. On the Configure page, in the Code section:  
For GitHub, drop down and select the Organization, Repository, and Branch you want to deploy continuously.
- \* 6. Select Continue.
- \* 7. On the Test page, choose whether to enable load tests, and then select Continue.
- \* 8. Depending on your App Service plan pricing tier, you may see a Deploy to staging page. Choose whether to enable deployment slots, and then select Continue.
- \* 9. After you configure the build provider, review the settings on the Summary page, and then select Finish.

References:

<https://docs.microsoft.com/en-us/azure/app-service/deploy-continuous-deployment>

**NEW QUESTION 373**

.....

## THANKS FOR TRYING THE DEMO OF OUR PRODUCT

Visit Our Site to Purchase the Full Set of Actual AZ-400 Exam Questions With Answers.

We Also Provide Practice Exam Software That Simulates Real Exam Environment And Has Many Self-Assessment Features. Order the AZ-400 Product From:

<https://www.2passeasy.com/dumps/AZ-400/>

## Money Back Guarantee

### **AZ-400 Practice Exam Features:**

- \* AZ-400 Questions and Answers Updated Frequently
- \* AZ-400 Practice Questions Verified by Expert Senior Certified Staff
- \* AZ-400 Most Realistic Questions that Guarantee you a Pass on Your FirstTry
- \* AZ-400 Practice Test Questions in Multiple Choice Formats and Updatesfor 1 Year