

## HPE6-A72 Dumps

### Aruba Certified Switching Associate Exam

<https://www.certleader.com/HPE6-A72-dumps.html>



#### NEW QUESTION 1

What is the process where a compute device converts logical data bits into the correct physical representation depending on the media?

- A. Demodulation
- B. Modulation
- C. Propagation
- D. Encapsulation

**Answer:** D

#### NEW QUESTION 2

Which two statements are true regarding Checkpoints on Aruba switches? (Choose two.)

- A. Rolling back to a prior checkpoint triggers a reboot of the switch.
- B. Stacking switches using VSF or VSX will disable the Checkpoint feature.
- C. A checkpoint is a snapshot of the running-configuration and relevant metadata at the time the checkpoint was created.
- D. System-generated checkpoints are created after a configuration change and 5 minutes of inactivity.
- E. Checkpoints are available on AOS 5400R switches, as well as on all AOS-CX switches.

**Answer:** CE

#### NEW QUESTION 3

What is the login and password combination is used when first configuring an Aruba OS-CX switch from factory defaults?

- A. Login admin and password field empty.
- B. Login admin and password forgetme!
- C. Login admin and password password.

**Answer:** B

#### NEW QUESTION 4

Which two options are correct regarding the IEEE 802.11ax standard? (Choose two.)

- A. allows transmissions of up to 4.8Gbps
- B. is an emerging satellite connection standard to allow wireless access anywhere in the world
- C. operates only in the 5GHz similar to 802.11ac
- D. operates in both the 2.4GHz and 5GHz radios bands
- E. is the first WLAN standard to no longer use electromagnetic signals to transmit data

**Answer:** AD

#### NEW QUESTION 5

Match each description to the correct term.

Term	Description
ASIC	<input type="text"/> receives and sends frames by using Application-Specific Integrated Circuits (ASICs)
Control Plane	<input type="text"/>
Data Plane	<input type="text"/> switches packets faster than using software
Management Plane	<input type="text"/> determines packet forwarding using routing, switching, security, and flow optimization
	<input type="text"/> handles switch monitoring

- A. Mastered
- B. Not Mastered

**Answer:** A

**Explanation:**

Term	Description
ASIC	receives and sends frames by using Application-Specific Integrated Circuits (ASICs)
Control Plane	
Data Plane	switches packets faster than using software
Management Plane	determines packet forwarding using routing, switching, security, and flow optimization
	handles switch monitoring

**NEW QUESTION 6**

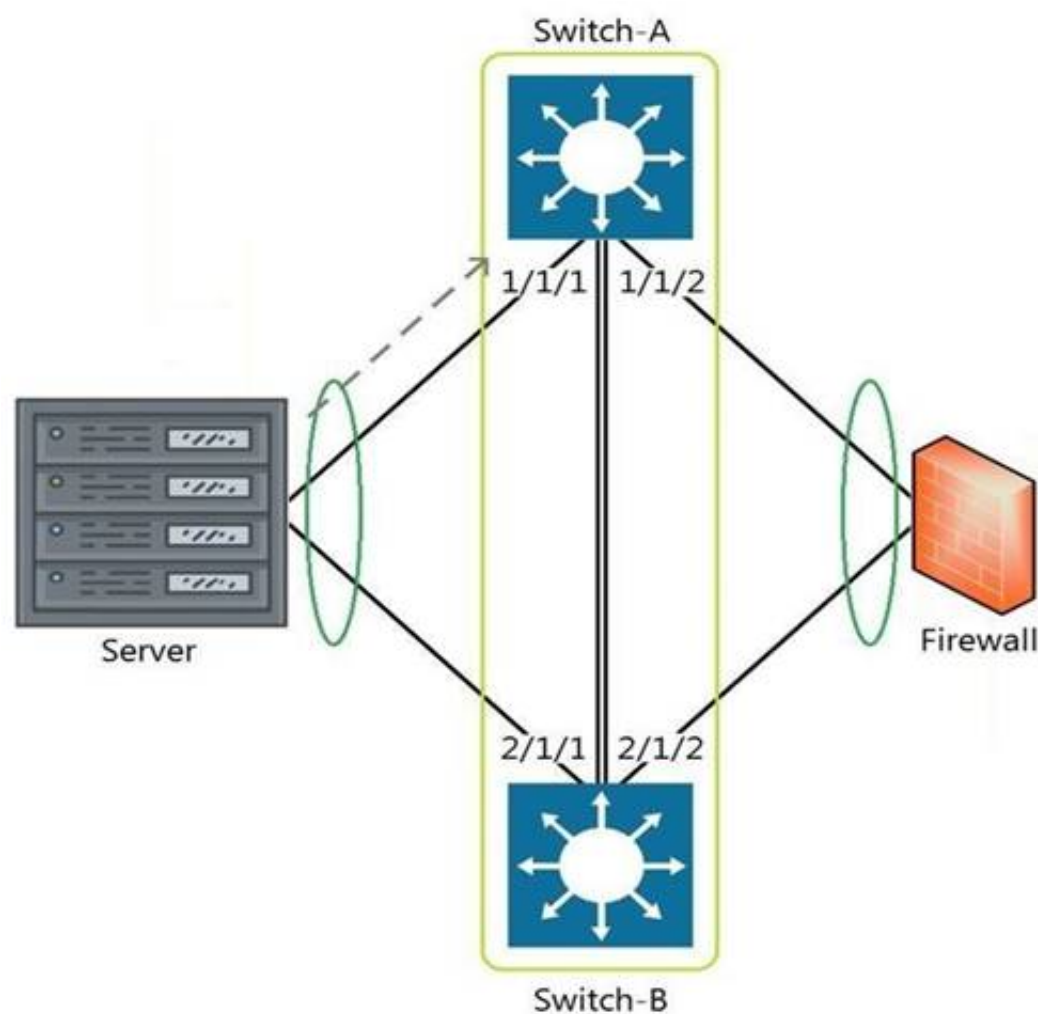
Which option correctly describes a WAN network?

- A. a group of computer resources that communicates between geographically separate locations  
B. the connection between two separate buildings in the same campus  
C. a network of devices over long distances but limited to within a single ISP  
D. compute resources that are networked locally over wireless

**Answer: A**

## NEW QUESTION 7

Refer to the exhibit.



The above scenario shows a packet from the Server destined for the Firewall. Switch-A and Switch-B are bundled as VSF stack. The LAG between the VSF stack and the firewall indicates a hash function to forward the packet on port 2/1/2.

Which statement is true regarding how Switch-A will forward the packet?

- A. Switch-A will forward the packet on port 1/1/2. VSF will override the typical LAG hash function used for the physical interface selection.
- B. Switch-A will drop the packet.
- C. Multi-Chassis lag to multi-chassis lag is not a supported feature of VSF.
- D. Switch-A will encapsulate the packet using GRE to forward to Switch-B in order for the packet to egress on port 2/1/2 per the hash function.
- E. Switch-A will forward the packet along the VSF link to Switch-B so that it will egress on port 2/1/2 per the hash function.

**Answer: D**

**NEW QUESTION 8**

Match the terms to the correct layer of the OSI model.

Layer		Term
Transport Layer		Frames
Network Layer		Packets
Physical Layer		RF Signals
Data Link Layer		Segments

- A. Mastered  
B. Not Mastered

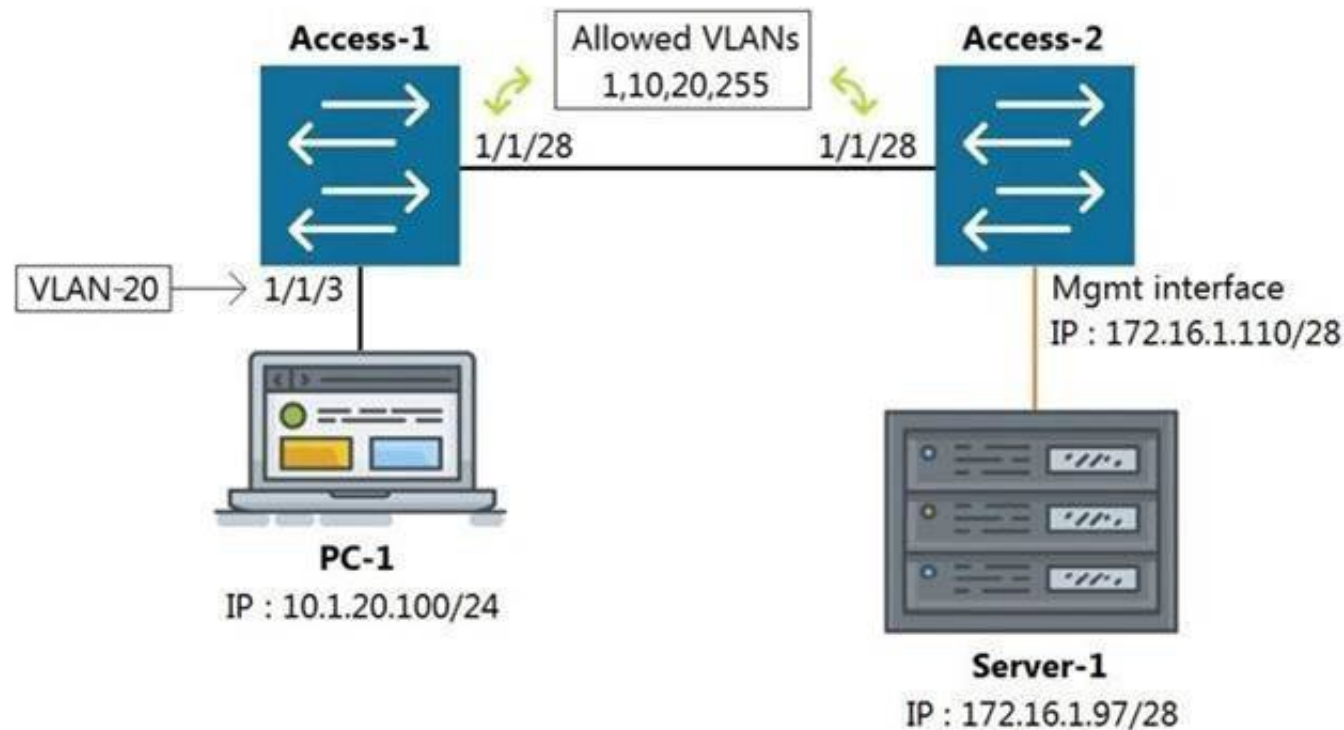
**Answer:** A

**Explanation:**

Layer		Term
Transport Layer	Data Link Layer	Frames
Network Layer	Network Layer	Packets
Physical Layer	Physical Layer	RF Signals
Data Link Layer	Transport Layer	Segments

#### NEW QUESTION 9

Refer to the exhibit.



All switches are running Aruba OS-CX. While working in the terminal of Access-2, you are unable to reach Server-1 using SSH. What is the correct command to ping Server-1 from Access-2 to test reachability?

- A. Access-2# ping6 172.16.1.97 vrf mgm  
B. Access-2# ping 172.16.1.97  
C. Access-2# ping 172.16.1.97 vrf default  
D. Access-2# ping 172.16.1.97 vrf mgmt

**Answer:** D

#### NEW QUESTION 10

Refer to the exhibit.



```
watchlog/3      0      0      0
dbus-daemon     0      0      15
intfd           0      0      11
ext4-rsv-conver 0      0      0
scsi_eh_6       0      0      0
cpuhp/3         0      0      0
kworker/4:0     0      0      0
scsi_tmf_4      0      0      0
kworker/5:1H    0      0      0
smartd          0      0      3
fault-handlerd  0      0      10
btd             0      0      12
portd           0      0      12
migration/4     0      0      0
scsi_tmf_1      0      0      0
kworker/2:0H    0      0      0
kauditd         0      0      0
rmond           0      0      9
certmgr         0      0      13
icmp6_unreachab 0      0      0
Core-1#
```

The above output is the result of issuing the command show system resource-utilization. What command should be used to enable terminal output line by line or page by page?

- A. The command page
- B. The command terminal length 30
- C. The command more
- D. The command less

**Answer:** A

#### NEW QUESTION 10

Which switch supports a maximum of 8 line-cards, 3 fabric modules, and 2 management cards?

- A. Aruba 8400
- B. Aruba 8408
- C. Aruba 6410
- D. Aruba 5412r

**Answer:** A

#### NEW QUESTION 11

Refer to the exhibit.

```
Core-1# show interface mgmt
  Address Mode           : static
  Admin State             : up
  Mac Address             : 90:20:c2:bc:8e:01
  IPv4 address/subnet-mask : 10.1.1.1/24
  Default gateway IPv4     : 10.1.1.254
  IPv6 address/prefix      :
  IPv6 link local address/prefix:
  Default gateway IPv6     :
  Primary Nameserver       : 10.254.1.21
  Secondary Nameserver     :
Core-1# ping 10.1.1.254
connect: Network is unreachable
Core-1#
```

What change on Core-1 will result in a successful ping to 10.1.1.254 from the management interface?

- A. Use the command ping 10.1.1.254 vrf mgmt
- B. Use the command ping 10.1.1.254/24
- C. Change the Core-1 management address to 10.1.1.1/25 first
- D. The destination 10.1.1.254 requires configuring a static route

**Answer:** A

#### NEW QUESTION 14

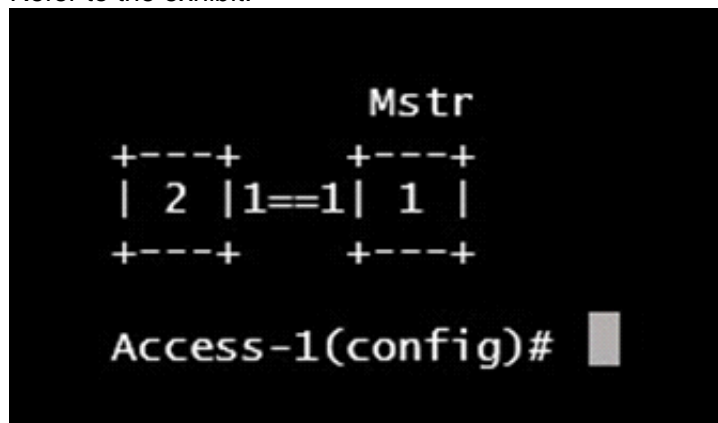
With what other technology does Half Duplex communication closely match?

- A. a pair of fiber optic strands allowing transmit on one and receive on the other at the same time
- B. a mobile phone call
- C. point-to-point connections between two switches allowing concurrent transmit and receive
- D. CB radio using push-to-talk

**Answer: D**

#### NEW QUESTION 15

Refer to the exhibit.



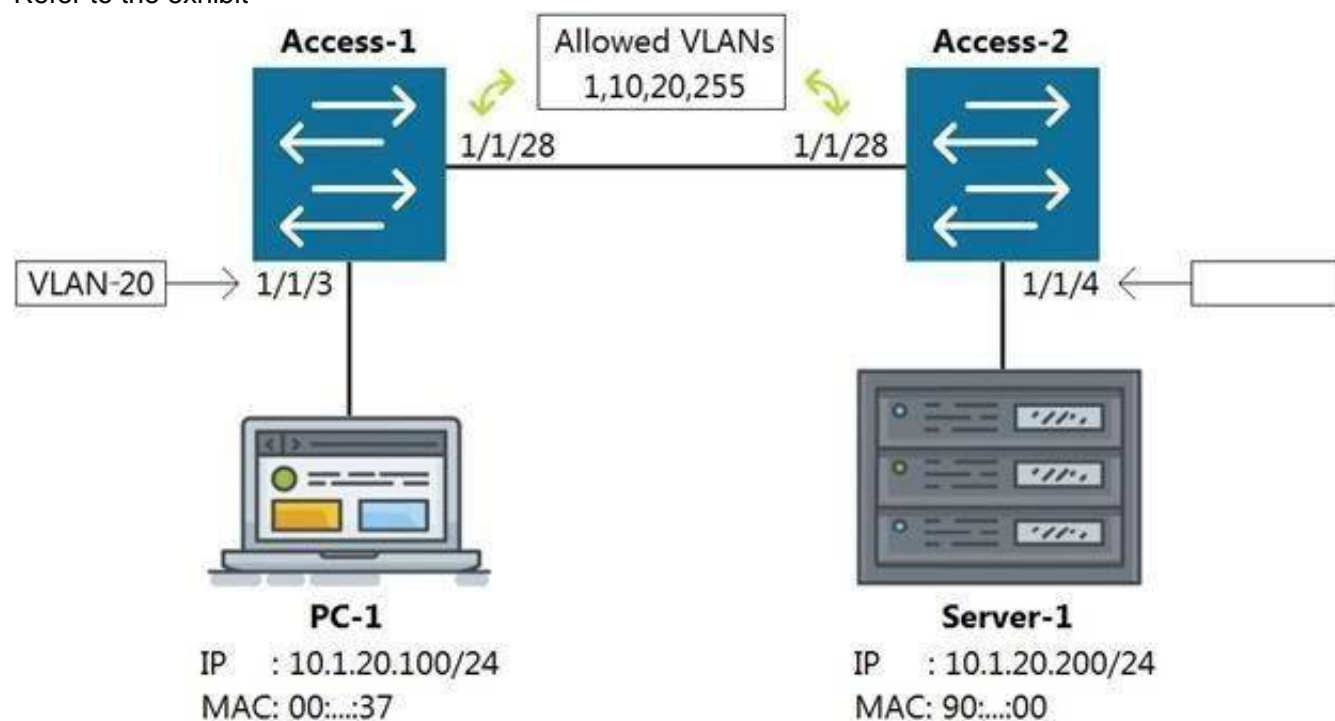
What VSF command produces the above output?

- A. show vsf member
- B. show vsf link
- C. show vsf topology
- D. show vsf detail

**Answer: C**

#### NEW QUESTION 20

Refer to the exhibit



Which command on Access-2 port 1/1/4 will enable connectivity between PC-1 and Server-1 without any routing enabled in the network?

- A. Access-2 (config-if-1/1/4)# vlan access 1, 10, 20, 255
- B. Access-2 (config-if-1/1/4)# vlan access 20
- C. Access-2 (config-if-1/1/4)# vlan 20 untag 1/1/4
- D. Access-2 (config-if-1/1/4)# vlan trunk allow 1, 10, 255

**Answer: B**

#### NEW QUESTION 22

What is the Link Layer Discovery Protocol?

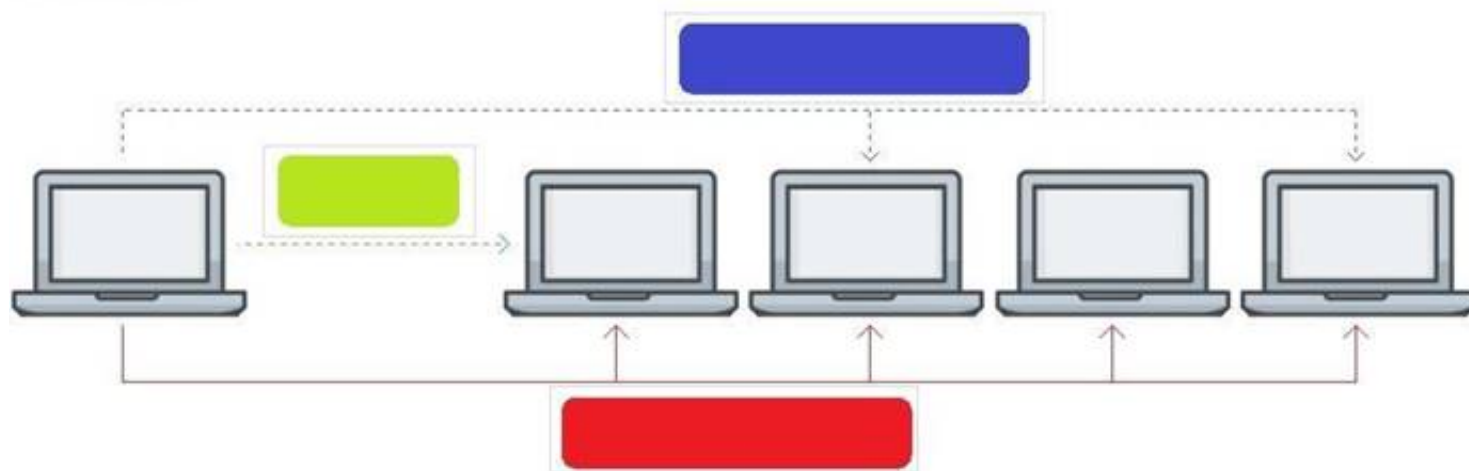
- A. a discovery protocol used between Layer 3 devices to determine routes within a single autonomous system
- B. a standardized IPv6 neighbor discovery protocol used to replace the ARP and broadcast mechanism used in IPv4
- C. a standardized protocol for communicating directly-connected device information and capabilities.
- D. an Aruba proprietary discovery protocol supported in all Aruba switches along with Cisco Discovery Protocol or CDP

**Answer: C**

#### NEW QUESTION 24

Click on the colored box that corresponds with the line that best represents Broadcast traffic flow.

**Answer Area**

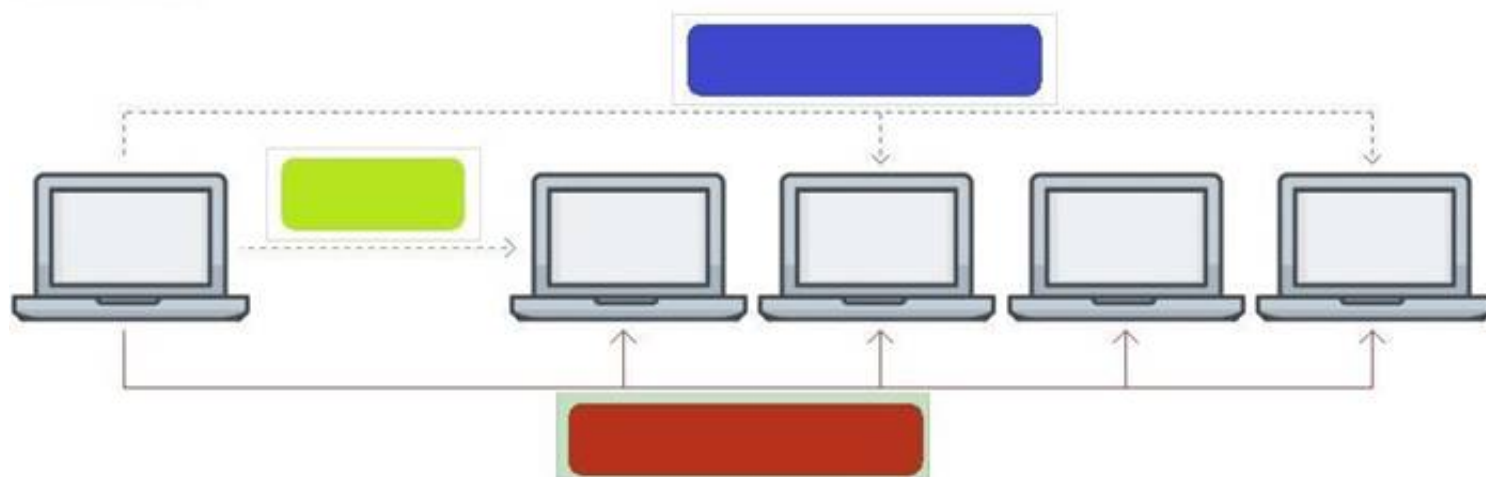


- A. Mastered
- B. Not Mastered

**Answer: A**

**Explanation:**

**Answer Area**



**NEW QUESTION 25**

Refer to the exhibit.



The Aruba 8400 in the exhibit is member 2 of a VSX stack.

Which command will enter the interface sub configuration mode for the port, indicated by the orange square?

- A. 8400(config)# interface 2/4/15
- B. 8400(config)# interface 1/7/16
- C. 8400(config)# interface 1/4/15
- D. 8400(config)# interface 2/3/17

**Answer: A**

**NEW QUESTION 30**

What is the correct description of a Multi-Layer Switch?



- A. a switch with Layer 3 routing capabilities but lacks any Layer 1 features as a consequence
- B. any switch that supports PoE, LLDP-MED and Flow Control
- C. has all the functionality of a Layer 2 switch and most of the functionality of a Layer 3 router
- D. multi-Layer refers specifically to using chassis switches with several line cards over stack port switches

**Answer:** C

#### NEW QUESTION 34

Which network category applies to a SOHO internal network?

- A. SD-WAN
- B. LAN
- C. WAN
- D. Internet

**Answer:** D

#### NEW QUESTION 39

ServiceOS login: admin SVOS> password

Enter password: \*\*\*\*\* Confirm password: \*\*\*\*\*

The login password to access an Aruba AOS-CX was lost. After connecting to the switch console port, a reboot is performed and the Service OS console is accessed as shown above.

What is the default password that is required for the admin account while under the Service OS console?

- A. No password is set for this account.
- B. "password"
- C. "forgetme!"
- D. The same login password that has lost originally.

**Answer:** C

#### NEW QUESTION 43

Which Ethernet port combination does the Aruba 5400R ZL2 switch series support?

- A. 10/100 Megabit Ethernet, Gigabit Ethernet, and 100 Gigabit Ethernet
- B. Gigabit Ethernet, 25 Gigabit Ethernet, and 40 Gigabit Ethernet
- C. 10/100 Megabit Ethernet, Gigabit Ethernet, 25 Gigabit Ethernet, and 100 Gigabit Ethernet
- D. 10/100 Megabit Ethernet, Gigabit Ethernet, and 40 Gigabit Ethernet

**Answer:** D

#### NEW QUESTION 45

What are the benefits of a 3-Tier design over a 2-Tier? (Choose two.)

- A. Offloading processing from the Core without routing at the Access layer.
- B. Can use lower speed links between Core to Aggregation and Aggregation to Access given the use of an Aggregation layer.
- C. Lowering the cost of a deployment due to needing less switches overall.
- D. Better scalability in a campus with a large number of buildings.
- E. Gaining the flexibility to connect the Data-Center to any Access layer switch.

**Answer:** AD

#### NEW QUESTION 49

.....



## Thank You for Trying Our Product

\* 100% Pass or Money Back

All our products come with a 90-day Money Back Guarantee.

\* One year free update

You can enjoy free update one year. 24x7 online support.

\* Trusted by Millions

We currently serve more than 30,000,000 customers.

\* Shop Securely

All transactions are protected by VeriSign!

**100% Pass Your HPE6-A72 Exam with Our Prep Materials Via below:**

<https://www.certleader.com/HPE6-A72-dumps.html>