

Exam Questions 400-007

Cisco Certified Design Expert (CCDE v3.0) Written Exam

<https://www.2passeasy.com/dumps/400-007/>



NEW QUESTION 1

Which two characteristics apply to firewall transparent mode operations in a firewall solution design? (Choose two.)

- A. Changes in the existing IP addressing and subnets are required
- B. The firewall can participate actively on spanning tree.
- C. Multicast traffic can traverse the firewall.
- D. OSPF adjacencies can be established through the firewall
- E. The firewall acts like a router hop in the network.

Answer: CD

NEW QUESTION 2

SDWAN networks capitalize the usage of broadband Internet links over traditional MPLS links to offer more cost benefits to enterprise customers. However, due to the insecure nature of the public Internet, it is mandatory to use encryption of traffic between any two SDWAN edge devices installed behind NAT gateways. Which overlay method can provide optimal transport over unreliable underlay networks that are behind NAT gateways?

- A. TLS
- B. DTLS
- C. IPsec
- D. GRE

Answer: C

NEW QUESTION 3

As part of workspace digitization, a large enterprise has migrated all their users to Desktop as a Service (DaaS), by hosting the backend system in their on-premises data center. Some of the branches have started to experience disconnections to the DaaS at periodic intervals, however, local users in the data center and head office do not experience this behavior. Which technology can be used to mitigate this issue?

- A. tail drop
- B. traffic shaping
- C. WRED
- D. traffic policing

Answer: B

Explanation:

Traffic Shaping does help with congestion and better bandwidth utilization over the WAN.

NEW QUESTION 4

A network attacker exploits application flaws to compromise critical systems in the organization with these objectives:

- Obtain sensitive data and export the data out of the network.
- Compromise developer and administrator credentials to potentially

What is the next step after application discovery is completed in Zero Trust networkings

- A. Establish visibility and behavior modeling
- B. Enforce policies and microsegmentation.
- C. Assess real-time security health.
- D. Ensure trustworthiness of systems.

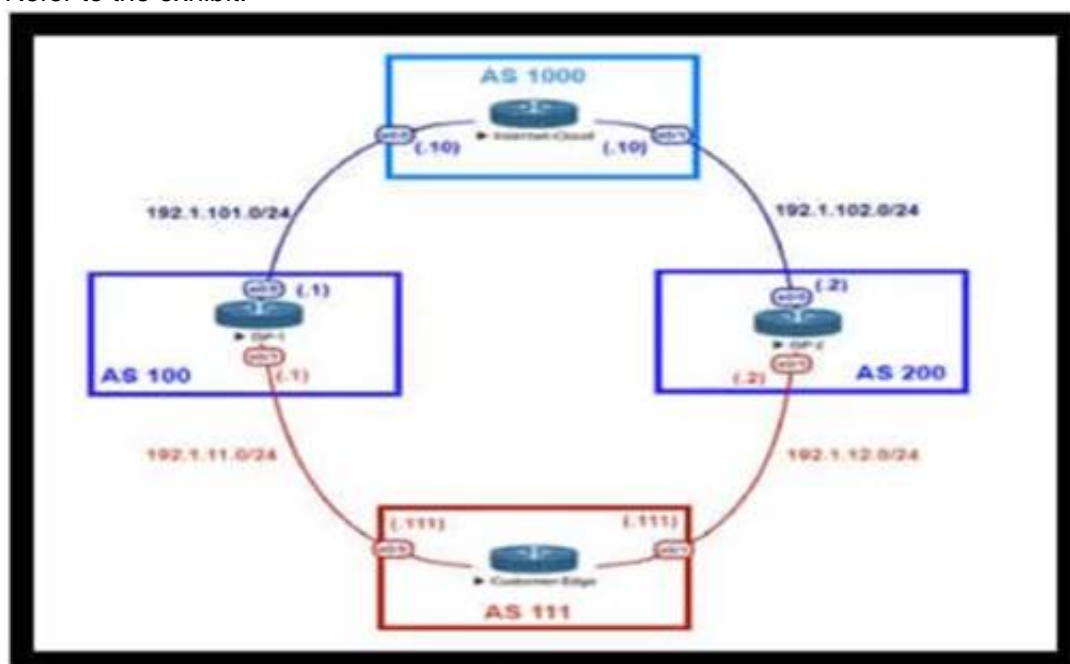
Answer: B

Explanation:

<https://www.cisco.com/c/en/us/solutions/collateral/enterprise/design-zone-security/zt-arch-guide.html>

NEW QUESTION 5

Refer to the exhibit.



An engineer is designing the traffic flow for AS 111. Traffic from AS 111 should be preferred via AS 100 for all external routes. A method must be used that only

affects AS 111. Which BGP attributes are best suited to control outbound traffic?

- A. community
- B. MED
- C. local preference
- D. As path

Answer: C

NEW QUESTION 6

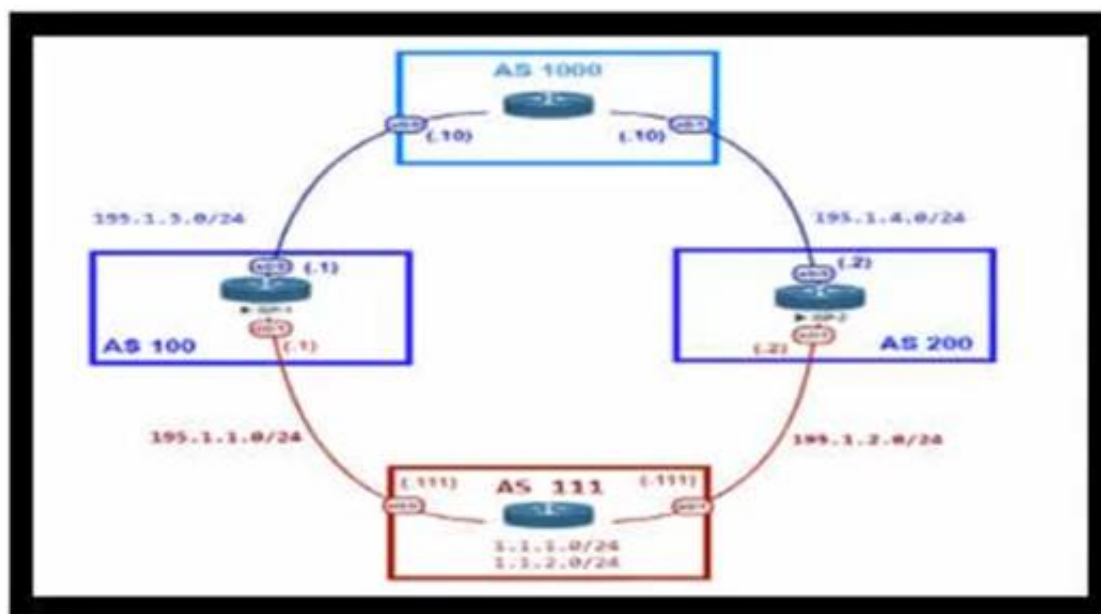
Which solution component helps to achieve rapid migration to the cloud for SaaS and public cloud leveraging SD-WAN capabilities?

- A. service-oriented cloud architecture
- B. Cloud onramp
- C. cloud registry
- D. microservices in the cloud

Answer: B

NEW QUESTION 7

Refer to the exhibit.



An engineer is designing the network for a multihomed customer running in AS 111 does not have any other Ass connected to it. Which technology is more comprehensive to use in the design to make sure that the AS is not being used as a transit AS?

- A. Configure the AS-set attribute to allow only routes from AS 111 to be propagated to the neighbor ASs.
- B. Use the local preference attribute to configure your AS as a non-transit" AS.
- C. include an AS path access list to send routes to the neighboring ASs that only have AS 111 in the AS path field.
- D. Include a prefix list to only receive routes from neighboring ASs.

Answer: C

NEW QUESTION 8

Company XYZ connects its sites over a private WAN. Their overlay network is running a DMVPN setup where the headquarters site is the hub. The company is planning on implementing multicast routing on the network. What should be used in the multicast routing design?

- A. PIM dense mode with RP located at the hub
- B. PIM sparse mode with RP located at each remote site
- C. PIM sparse mode with RP located at the hub
- D. PIM dense mode with RP located at each remote site

Answer: C

Explanation:

<https://www.ccexpert.us/routing-switching-2/dynamic-multipoint-vpn.html>

NEW QUESTION 9

A financial company requires that a custom TCP-based stock-trading application be prioritized over all other traffic for the business due to the associated revenue. The company also requires that VoIP be prioritized for manual trades. Which directive should be followed when a QoS strategy is developed for the business?

- A. Allow VoIP and the custom application to share the same priority queue,
- B. The custom application and VoIP must be assigned their own separate priority queue.
- C. Interleave the custom application with other TCP applications in the same CBWR
- D. Avoid placing the custom application in a CBWFQ queue that contains other

Answer: C

NEW QUESTION 10

How can EIGRP topologies be designed to converge as fast as possible in the event of a point-to-point link failure?

- A. Limit the query domain by use of distribute lists.

- B. Build neighbor adjacencies in a triangulated fashion.
- C. Build neighbor adjacencies in squared fashion.
- D. Limit the query domain by use of summarization.
- E. Limit the query domain by use of default routes.

Answer: D

NEW QUESTION 10

You are designing a network for a branch office. In order to improve convergence time, you are required to use the BFD feature Which four routing protocols can you use to facilitate this? (Choose four.)

- A. IS-IS
- B. static
- C. RIP
- D. EIGRP
- E. BGP

Answer: ABDE

NEW QUESTION 12

Company XYZ asks for design recommendations for Layer 2 redundancy. The company wants to prioritize fast convergence and resiliency elements. In the design. Which two technologies are recommended? (Choose two.)

- A. Design MLAG/MC-LAG into the network wherever possible.
- B. Configure DHCP snooping on the switches.
- C. Use root guard.
- D. Use BPDU guard.
- E. Use UniDirectional Link Detection.

Answer: AE

NEW QUESTION 13

When designing a WAN that will be carrying real-time traffic, what are two important reasons to consider serialization delay? (Choose two)

- A. Serialization delays are invariable because they depend only on the line rate of the interface
- B. Serialization delays are variable because they depend on the line rate of the interface and on the type of the packet being serialized.
- C. Serialization delay is the time required to transmit the packet on the physical media.
- D. Serialization delays are variable because they depend only on the size of the packet being serialized
- E. Serialization delay depends not only on the line rate of the interface but also on the size of the packet

Answer: BD

NEW QUESTION 14

An engineer is designing the QoS strategy for Company XYZ. Based on initial analysis, a lot of scavenger type of traffic is traversing the network's 20Mb Internet link toward the service provider. The new design must use a QoS technique that limits scavenger traffic to 2 Mbps, which helps avoid oversubscription of the link during times of congestion. Which QoS technique can be used to facilitate this requirement?

- A. class-based traffic policing
- B. LLQ
- C. CBWFQ
- D. class-based traffic shaping

Answer: C

NEW QUESTION 19

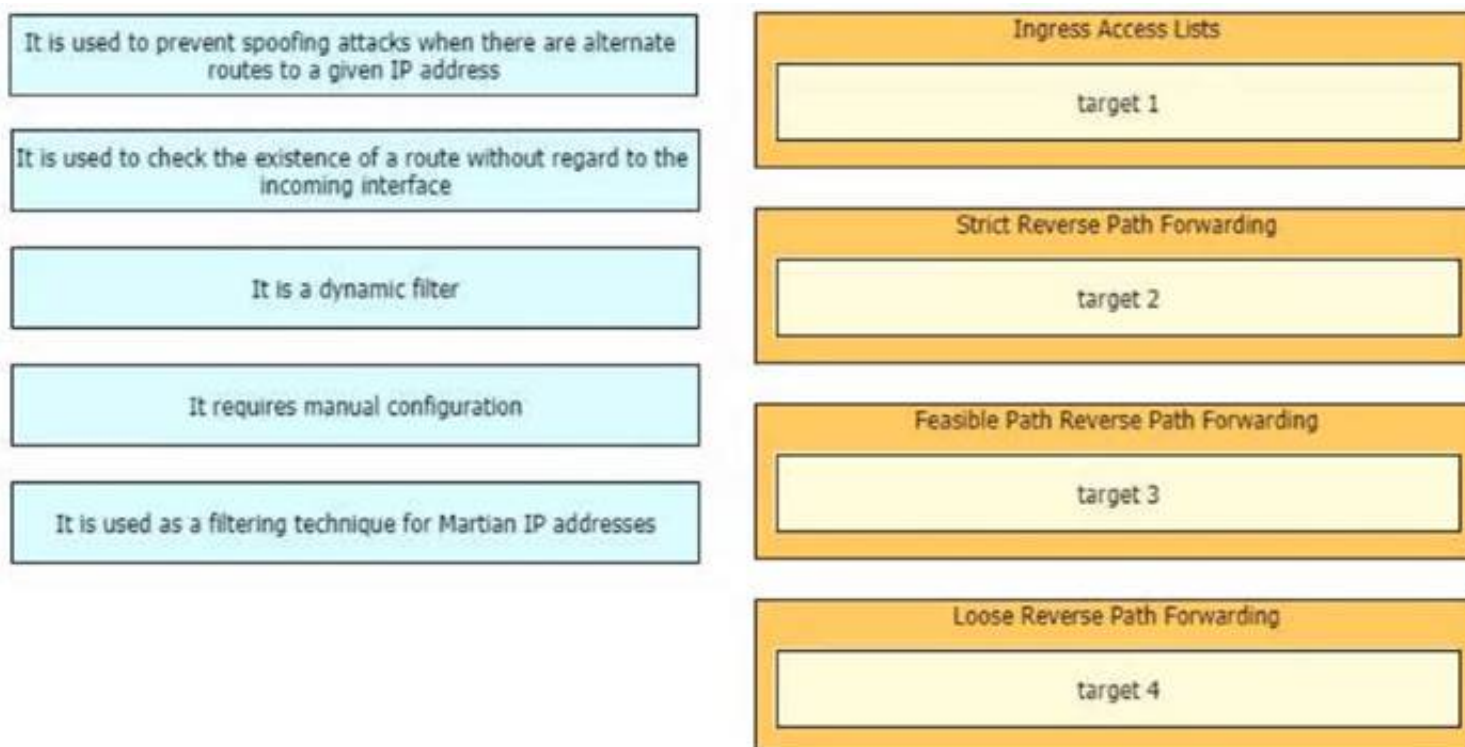
Identity and access management between multiple users and multiple applications has become a mandatory requirement for Company XYZ to fight against ever increasing cybersecurity threats. To achieve this, federated identity services have been deployed in the Company XYZ network to provide single sign-on and Multi-Factor Authentication for the applications and services. Which protocol can be used by Company XYZ to provide authentication and authorization services?

- A. OAuth2
- B. OpenID Connect
- C. OpenID
- D. SAML2.0

Answer: D

NEW QUESTION 20

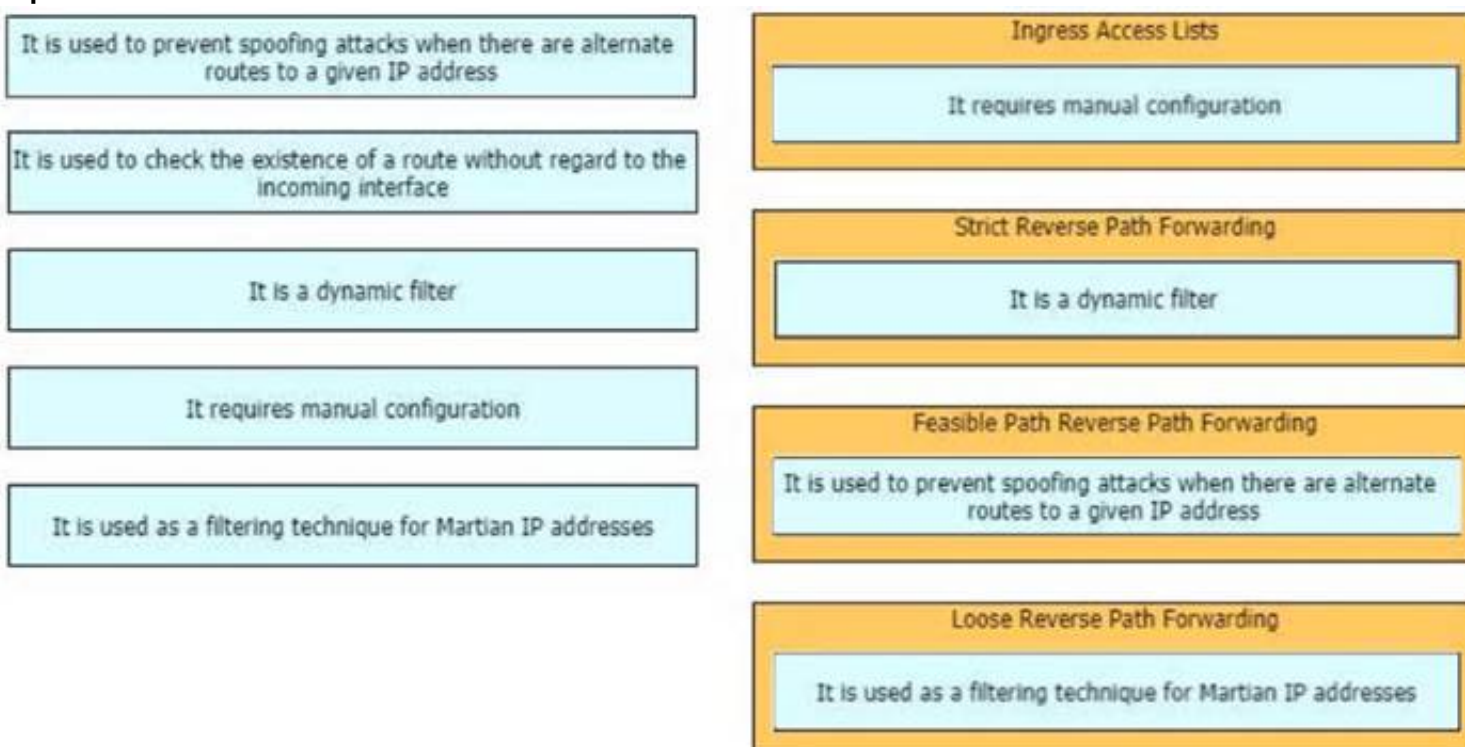
Drag and drop the design characteristics from the left onto the correct network filter techniques on the right. Not all options are used.



- A. Mastered
- B. Not Mastered

Answer: A

Explanation:



NEW QUESTION 24

Which two impacts of adding the IP event dampening feature to a network design are true? (Choose two.)

- A. It protects against routing loops.
- B. It switches traffic immediately after a link failure.
- C. It speeds up link failure detection.
- D. It reduces the utilization of system processing resources.
- E. It improves overall network stability.

Answer: DE

NEW QUESTION 29

Which feature is supported by NETCONF but is not supported by SNMP?

- A. distinguishing between configuration data and operational data
- B. taking administrative actions
- C. collecting the status of specific fields
- D. changing the configuration of specific fields

Answer: A

NEW QUESTION 32

Which Interconnectivity method offers the fastest convergence in the event of a unidirectional issue between three Layer 3 switches connected together with routed links in the same rack in a data center?

- A. Copper Ethernet connectivity with BFD enabled

- B. Copper Ethernet connectivity with UDLD enabled
- C. Fiber Ethernet connectivity with BFD enabled
- D. Fiber Ethernet connectivity with UDLD enabled

Answer: C

NEW QUESTION 35

Which tool automates network implementation activities and shortens the implementation lifecycle?

- A. LISP
- B. Java
- C. Conclusion
- D. Python

Answer: D

NEW QUESTION 39

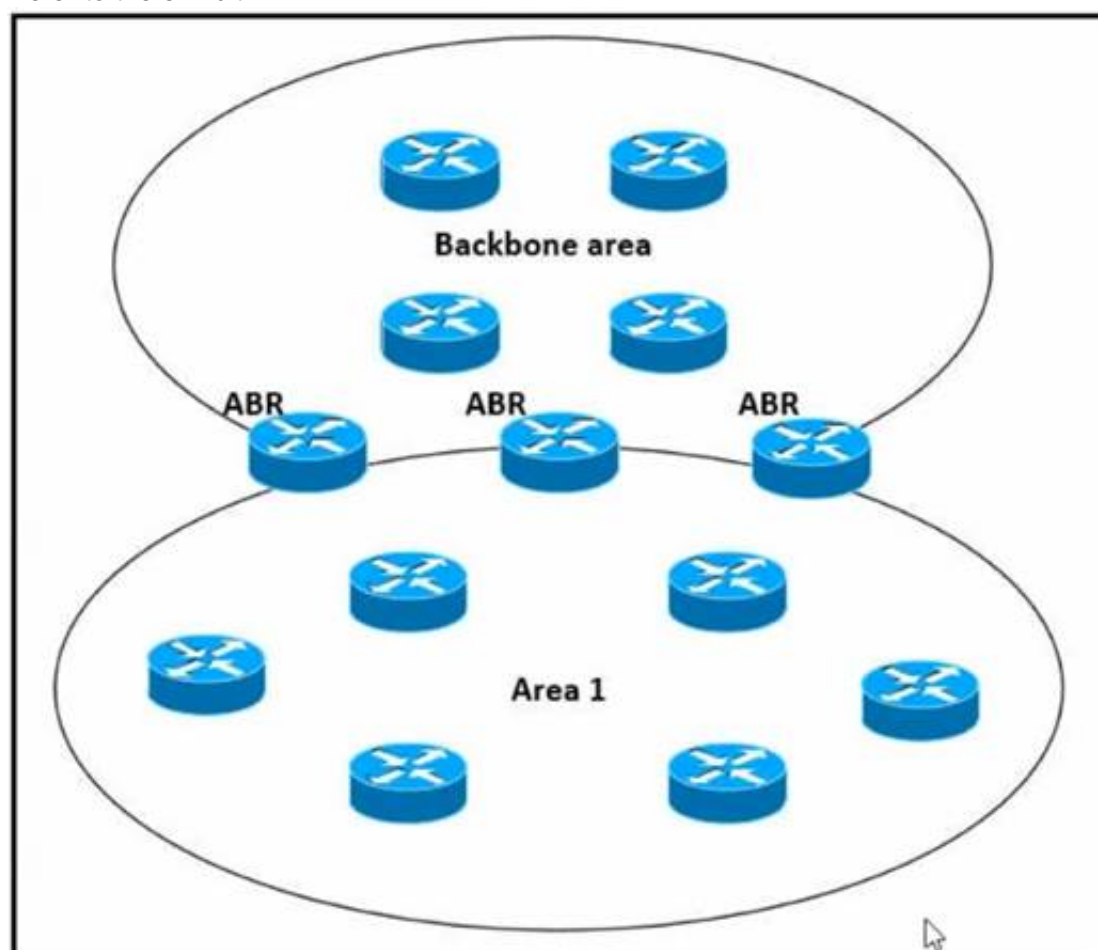
A network security team uses a purpose-built tool to actively monitor the campus network, applications, and user activity. The team also analyzes enterprise telemetry data from IPFIX data records that are received from devices in the campus network. Which action can be taken based on the augmented data?

- A. reduction in time to detect and respond to threats
- B. integration with an incident response plan
- C. adoption and improvement of threat-detection response
- D. asset identification and grouping decisions

Answer: A

NEW QUESTION 44

Refer to the exhibit.



Which impact of using three or more ABRs between the backbone area and area 1 is true?

- A. In a large-scale network LSA replication by all ABRs can cause serious scalability issues
- B. Multiple ABRs reduce the CPU processing on each ABR due to splitting prefix advertisement
- C. In a large-scale network multiple ABRs can create microloops.
- D. Prefixes from the non-backbone area are advertised by one ABR to the backbone

Answer: A

NEW QUESTION 48

An enterprise plans to evolve from a traditional WAN network to a software-defined WAN network. The existing devices have limited capability when it comes to virtualization. As the migration is carried out, enterprise applications and services must not experience any traffic impact. Which implementation plan can be used to accommodate this during the migration phase?

- A. Deploy controllers, deploy SD-WAN edge router
- B. In the data center, and migrate branch sites.
- C. Migrate data center WAN routers, migrate branch sites, and deploy SD-WAN edge routers.
- D. Migrate branch sites, migrate data center WAN routers, and deploy controllers.
- E. Deploy SD-WAN edge routers in the data center, deploy controllers, and migrate branch sites

Answer: A

NEW QUESTION 52

A healthcare provider discovers that protected health information of patients was altered without patient consent. The healthcare provider is subject to HIPAA compliance and is required to protect PHI data. Which type of security safeguard should be implemented to resolve this issue?

- A. technical and physical access control
- B. administrative security management processes
- C. physical device and media control
- D. technical integrity and transmission security

Answer: D

Explanation:

https://www.cisco.com/en/US/docs/solutions/Enterprise/Compliance/HIPAA/HIP_AppC.html#wp1085353

NEW QUESTION 56

What is an architectural framework created by ETSI that defines standards to decouple network functions from proprietary hardware-based appliances and have them run in software on standard x86 servers?

- A. NFVIS
- B. NFV
- C. VNF

Answer: C

NEW QUESTION 61

Company XYZ Is running a redundant private WAN network using OSPF as the underlay protocol The current design accommodates for redundancy In the network, but it Is taking over 30 seconds for the network to reconverge upon failure Which technique can be Implemented In the design to detect such a failure in a subsecond?

- A. STP
- B. fate sharing
- C. OSPF LFA
- D. BFD
- E. flex links

Answer: D

NEW QUESTION 63

Drag and drop the end-to-end network virtualization elements from the left onto the correct network areas on the right.

Network Functions Virtualization (NFV)	Edge Control
IP Tunneling	option A
VRF	option B
MPLS + MP-BGP	Transport Virtualization
VLAN	option A
Service Containers	option B
	Service Virtualization
	option A
	option B

- A. Mastered
- B. Not Mastered

Answer: A

Explanation:

Graphical user interface Description automatically generated with medium confidence

NEW QUESTION 67

Company XYZ is migrating their existing network to IPv6 and they must plan for Layer 2 and Layer 3 devices Some of the access layer switches do not support IPv6, however, core and distribution switches fully support unicast and multicast routing. The company wants to minimize cost of the migration. Which migration strategy should be used in the design?

- A. The access layer switches must support IGMP snooping at a minimu

- B. Any switches that do not support IGM snooping must be replaced.
- C. Upgrade the nonsupporting switches Otherwise, it will cause an issue with the migration.
- D. Layer 2 switches will not affect the implementation of IPv6. They can be included in the design in their current state.
- E. The access layer switches must support DHCPv6. Any switches that do not support DHCPv6 must be replaced.

Answer: C

NEW QUESTION 72

Which action must be taken before new VoIP systems are implemented on a network to ensure that the network is ready to handle the traffic?

- A. Evaluate bandwidth utilization and connection quality
- B. Enable special requirements such as direct DID lines on pickup
- C. Make recommendations to limit the size of the half-open session table on routers
- D. Check if anomaly detection is enabled for SIP and H.323 on Layer 3 devices

Answer: B

NEW QUESTION 74

A network architect must redesign a service provider edge, where multiservice and multitenant PEs are currently present. Which design feature should be minimized in the new design to achieve reliability?

- A. bridging
- B. fate sharing
- C. redundancy
- D. unicast overlay routing

Answer: B

NEW QUESTION 75

Which two benefits can software defined networks provide to businesses? (Choose two.)

- A. provides additional redundancy
- B. decentralized management
- C. reduced latency
- D. enables innovation
- E. reduction of OpEx/CapEx
- F. meets high traffic demands

Answer: DE

NEW QUESTION 77

A senior network designer suggests that you should improve network convergence times by reducing BGP timers between your CE router and the PE router of the service provider. Which two factors should you consider to adjust the timer values? (Choose two.)

- A. service provider agreement to support tuned timers
- B. manual updates to the peer groups
- C. service provider scheduling of changes to the PE
- D. number of routes on the CE router
- E. number of VRFs on the PE router

Answer: AD

NEW QUESTION 81

Which function is performed at the access layer of the three-layer hierarchical network design model?

- A. fault isolation
- B. QoS classification and marking boundary
- C. reliability
- D. fast transport
- E. redundancy and load balancing

Answer: B

NEW QUESTION 85

You are using iSCSI to transfer files between a 10 Gigabit Ethernet storage system and a 1 Gigabit Ethernet server The performance is only approximately 700 Mbps and output drops are occurring on the server switch port. Which action will improve performance in a cost-effective manner?

- A. Change the protocol to CIFS.
- B. Increase the queue to at least 1 GB
- C. Use a WRED random drop policy
- D. Enable the TCP Nagle algorithm on the receiver

Answer: A

NEW QUESTION 89

You are designing a large-scale DMVPN network with more than 500 spokes using EIGRP as the IGP protocol Which design option eliminates potential tunnel down events on the spoke routers due to the holding time expiration?

- A. Increase the hold queue on the physical interface of the hub router.
- B. Increase the hold queue on the tunnel interface of the spoke routers
- C. Increase the hold queue on the tunnel interface of the hub router
- D. Apply QoS for pak_priority class
- E. Increase the hold queue on the physical interface of the spoke routers.

Answer: C

NEW QUESTION 94

A banking customer determines that it is operating POS and POI terminals that are noncompliant with PCI DSS requirements, as it is running TLSv1.0. The customer plans to migrate the terminals to TLSv1.2. What are two requirements to complete the migration? (Choose two.)

- A. Ensure that strong cryptography is applied for users who have administrative access through networks
- B. Apply strong cryptography and security protocols to safeguard sensitive cardholder data.
- C. Apply strong encryption for transmission of cardholder data across public networks.
- D. Protect all user systems against malware and frequently update antivirus software
- E. Maintain a policy that addresses information security for employees and third parties.

Answer: CE

NEW QUESTION 99

Which two control plane policer designs must be considered to achieve high availability? (Choose two.)

- A. Control plane policers are enforced in hardware to protect the software path, but they are hardware platform dependent in terms of classification ability.
- B. Control plane policers are really needed only on externally facing devices.
- C. Control plane policers can cause the network management systems to create false alarms.
- D. Control plane policers must be processed before a forwarding decision is made.
- E. Control plane policers require that adequate protocols overhead are factored in to allow protocol convergence.

Answer: AD

NEW QUESTION 102

An engineer must design a network for a company that uses OSPF LFA to reduce loops. Which type of loop would be reduced by using this design?

- A. DTP
- B. micro loops
- C. STP
- D. REP

Answer: B

NEW QUESTION 106

An MPLS service provider is offering a standard EoMPLS-based VPLS service to Customer A. providing Layer 2 connectivity between a central site and approximately 100 remote sites. Customer A wants to use the VPLS network to carry its internal multicast video feeds which are sourced at the central site and consist of 20 groups at Mbps each. Which service provider recommendation offers the most scalability?

- A. EoMPLS-based VPLS can carry multicast traffic in a scalable manner
- B. Use a mesh of GRE tunnels to carry the streams between sites
- C. Enable snooping mechanisms on the provider PE routers.
- D. Replace VPLS with a Layer 3 MVPN solution to carry the streams between sites

Answer: D

NEW QUESTION 109

What are two primary design constraints when a robust infrastructure solution is created? (Choose two.)

- A. monitoring capabilities
- B. project time frame
- C. staff experience
- D. component availability
- E. total cost

Answer: BE

NEW QUESTION 111

Customer XYZ network consists of an MPLS core. IS-IS running as IGP a pair of BGP route reflectors for route propagation, and a few dozens of MPLS-TE tunnels for specific tactical traffic engineering requirements. The customer's engineering department has some questions about the use of the Overload Bit in the IS-IS networks and how it could be used to improve their current network design. Which two concepts about the Overload Bit are true? (Choose two.)

- A. It can be set on a router during the startup process for a fixed period of time
- B. Networks advertised within the LSPs of the respective node will become unreachable
- C. It forces the midpoint MPLS-TE node to reoptimize the primary tunnels going through the OL node.
- D. It can be set on a router until other interacting protocols have signaled convergence.
- E. It is not recommended on BGP Route Reflectors

Answer: AD

NEW QUESTION 113

What is a characteristic of a secure cloud architecture model?

- A. limited access to job function
- B. dedicated and restricted workstations
- C. multi-factor authentication
- D. software-defined network segmentation

Answer: D

NEW QUESTION 114

How many fully established neighbour relationships exist on an Ethernet with five routers running OSPF as network type broadcast?

- A. 5
- B. 6
- C. 7
- D. 10
- E. 20

Answer: C

Explanation:

Assuming routers R1-R5, R1 is elected DR, R2 BDR. Fully established neighborships only occur to DR and BDR, all other neighbors are in 2Way DR other state.
DR|BDRFull relationships:
R2-R1 R3-R1 R3-R2 R4-R1 R4-R2 R5-R1
R5-R2

NEW QUESTION 117

Company XYZ has a hub-and-spoke topology over an SP-managed infrastructure. To measure traffic performance metrics, they implemented IP SLA senders on all spoke CE routers and an IP SLA responder on the hub CE router. What must they monitor to have visibility on the potential performance impact due to the constantly increasing number of spoke sites?

- A. CPU and memory usage on the spoke routers
- B. memory usage on the hub router
- C. CPU usage on the hub router
- D. interface buffers on the hub and spoke routers

Answer: C

NEW QUESTION 121

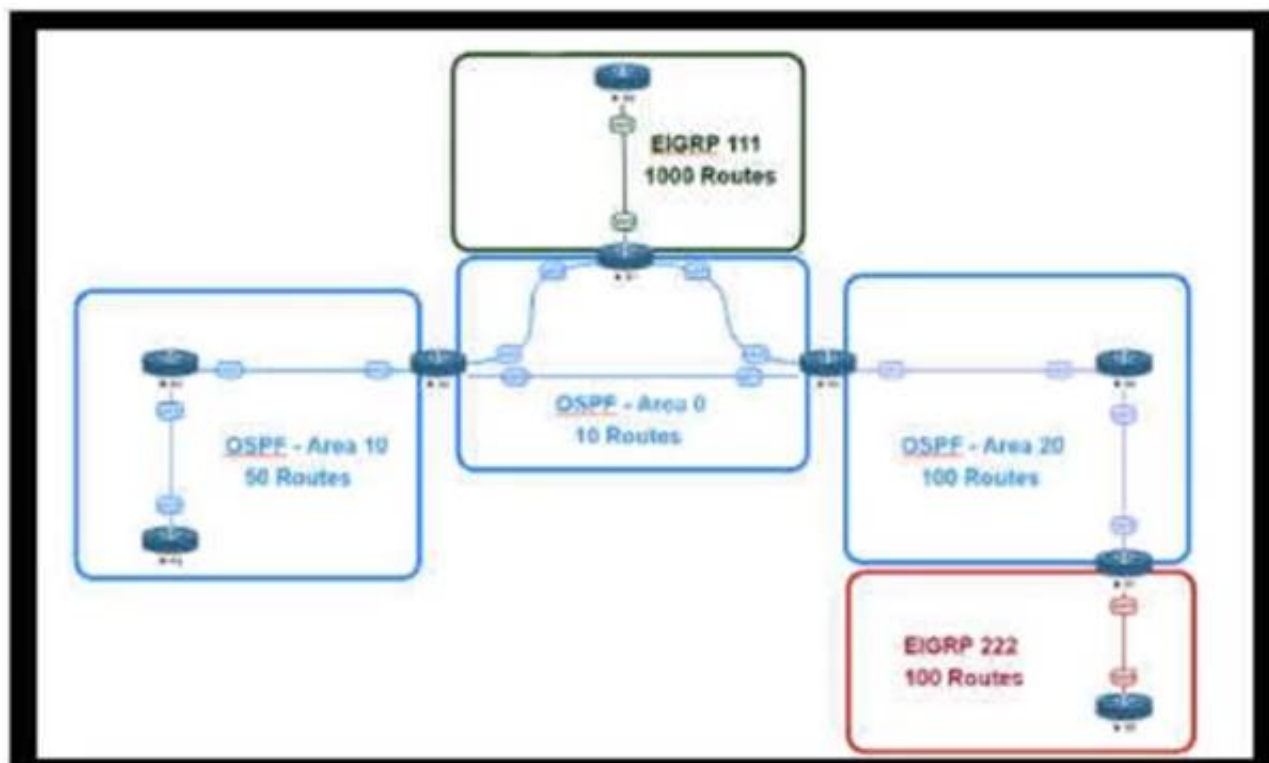
You have been asked to design a remote access VPN solution to support up to 2000 devices. You must ensure that only corporate assets are allowed to connect to the VPN, and users must authenticate to gain access of their based on their user role. Users must use a password that they are already using to access existing applications . A user may not always use the same device to access the VPN. Which two options combined meet the requirements? (Choose two)

- A. Use local usernames and passwords on the VPN device
- B. Deploy a central authentication directory that users can be authenticated and authorized against
- C. Deploy certificates that are unique to each user
- D. Deploy an IPsec VPN solution
- E. Deploy certificates that are unique to each device
- F. Deploy a SSL VPN solution

Answer: BF

NEW QUESTION 123

Retef to the exhibit.



An engineer is designing a multiarea OSPF network for a client who also has a large EIGRP domain. EIGRP routes are getting redistributed into OSPF. OSPF area 20 has routers with limited memory and CPU resources. The engineer wants to block routes from EIGRP 111 from propagating into area 20 and allow EIGRP 222 routes to flow. In which OSPF area type fulfills this design requirement?

- A. area 20 as a stub area
- B. type 5 LSA filtering on the ASBR between EIGRP 111 and area 0
- C. area 20 as a NSSA area
- D. type 3 LSA filtering on the ABR between area 0 and area 20

Answer: C

NEW QUESTION 128

A business customer deploys workloads in the public cloud. Now the customer network faces governance issues with the flow of IT traffic and must ensure the security of data and intellectual property. Which action helps to identify the issue for further resolution?

- A. Set up a secure tunnel from customer routers to ensure that traffic is protected as it travels to the cloud service providers.
- B. Send IPFIX telemetry data from customer routers to a centralized collector to identify traffic to cloud service providers.
- C. Build a zone-based firewall policy on Internet edge firewalls that collects statistics on traffic sent to cloud service providers.
- D. Apply workload policies that dictate the security requirements to the workloads that are placed in the cloud.

Answer: B

NEW QUESTION 133

What is the most important operational driver in building a resilient and secure modular network design?

- A. Dependencies on hardware or software that is difficult to scale
- B. Minimize app downtime
- C. Reduce the frequency of failures requiring human intervention
- D. Increase time spent on developing new features

Answer: B

NEW QUESTION 135

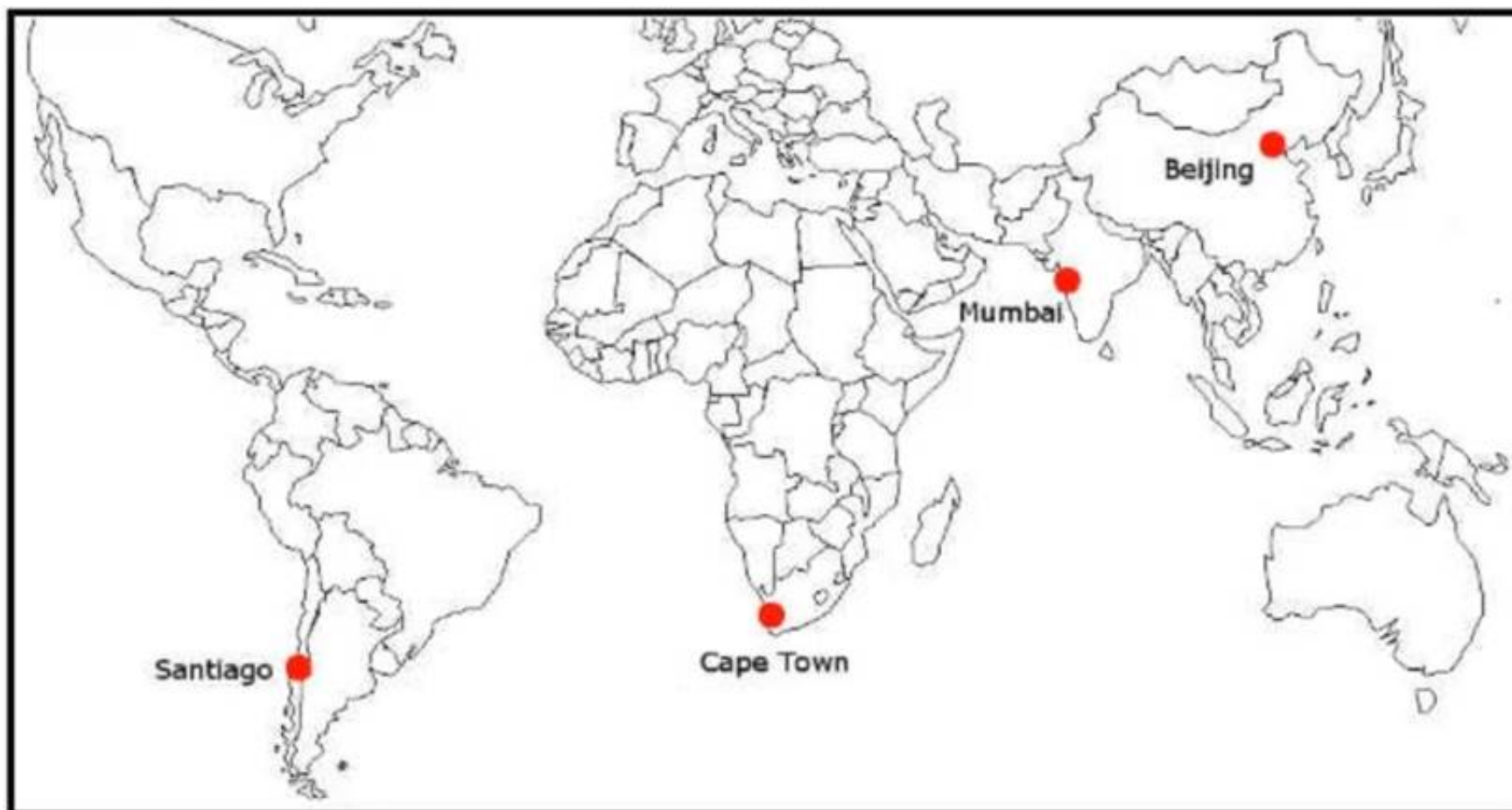
Which two points must network designers consider when designing a new network design or when evaluating an existing network design to help them understand the high-level design direction with regards to the security aspects? (Choose two)

- A. Consider Business objectives and goals
- B. Consider organization's security policy standards
- C. Consider for only multi-site networks
- D. Consider for only new network technologies and components

Answer: AB

NEW QUESTION 138

Refer to the exhibit.



ACME Mining has four data centers in Santiago. Cape Town. Mumbai, and Beijing, full-mesh connected via a 400 Mb/s EVP-LAN They want to deploy a new mission-critical application with these requirements:

- > cluster heartbeat 2 Mb/s continuous (250 KB/s)
- > cluster heartbeat one-way maximum latency 100 ms

These are the current ping tests results between the four data centers:

	Santiago	Cape Town	Mumbai	Beijing
Santiago	-	280 ms	378 ms	409 ms
Cape Town	280 ms	-	185 ms	445 ms
Mumbai	383 ms	176 ms	-	443 ms
Beijing	430 ms	448 ms	442 ms	-

Which hosting data center pair can host the new application?

- A. Mumbai and Beijing
- B. Santiago and Cape Town
- C. Santiago and Mumbai
- D. Cape Town and Mumbai
- E. Cape Town and Beijing
- F. Santiago and Beijing

Answer: D

NEW QUESTION 139

Company XYZ is running BGP as their routing protocol. An external design consultant recommends that TCP path MTU discovery be enabled. Which effect will this have on the network?

- A. It will enhance the performance of TCP-based applications.
- B. It will increase the convergence time.
- C. It will improve the convergence time.
- D. It will create a loop free path.

Answer: A

NEW QUESTION 142

Which three Cisco products are used in conjunction with Red Hat to provide an NFVi solution? (Choose three.)

- A. Cisco Prime Service Catalog
- B. Cisco Open Virtual Switch
- C. Cisco Nexus switches
- D. Cisco UCS
- E. Cisco Open Container Platform
- F. Cisco Virtual Network Function

Answer: CDF

NEW QUESTION 147

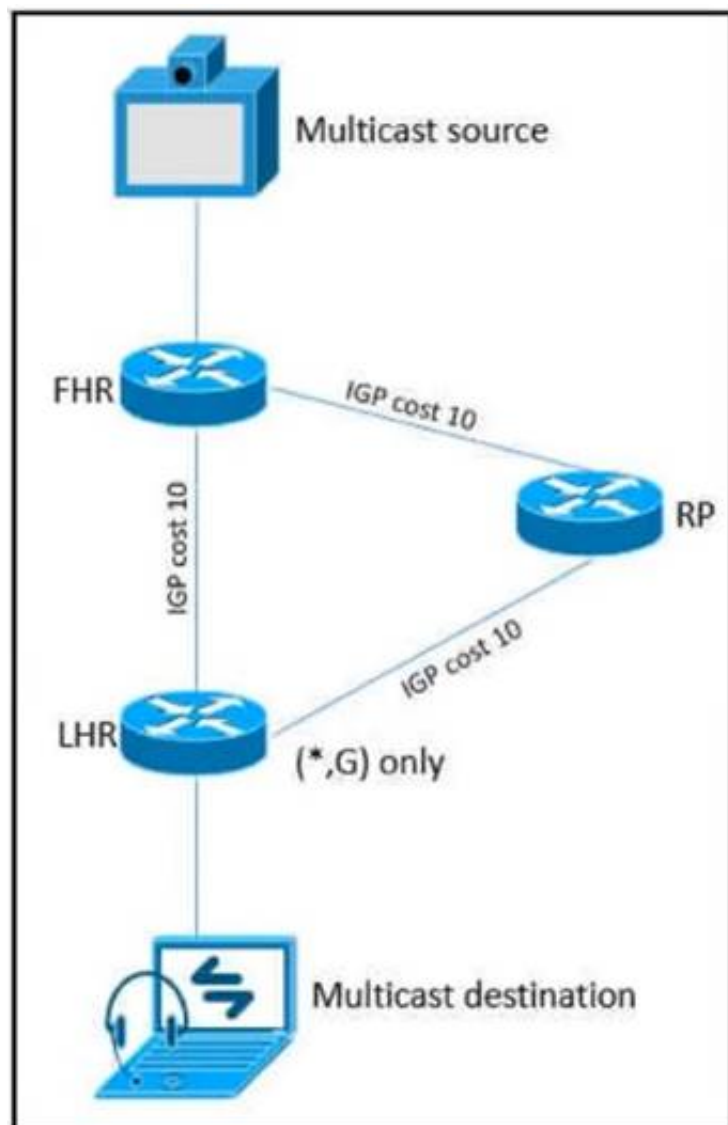
Which design consideration is valid when you contrast fabricPath and trill?

- A. FabricPath uses IS-IS, but TRILL uses VxLAN
- B. FabricPath permits active-active FHRP and TRILL support anycast gateway.
- C. FabricPath Permits ECMP, but TRILL does not
- D. FabricPath permits active-active mode, but TRILL supports only active-standby mode.

Answer: B

NEW QUESTION 152

Refer to the exhibit.



As part of a redesign project, you must predict multicast behavior. What happens to the multicast traffic received on the shared tree (*,G), if it is received on the LHR interface indicated*?

- A. It is dropped due to an unsuccessful RPF check against the multicast source
- B. It is switched given that no RPF check is performed
- C. It is switched due to a successful RPF check against the routing table
- D. It is dropped due to an unsuccessful RPF check against the multicast receiver.

Answer: C

Explanation:

<https://www.cisco.com/c/en/us/support/docs/ip/ip-multicast/16450-mcastguide0.html>

When a multicast packet arrives on an interface, the RPF process checks to ensure that this incoming interface is the outgoing interface used by unicast routing in order to reach the source of the multicast packet. This RPF check process prevents loops. Multicast routing does not forward a packet unless the source of the packet passes a RPF check. Once a packet passes this RPF check, multicast routing forwards the packet based only upon the destination address.

NEW QUESTION 155

An enterprise organization currently provides WAN connectivity to their branch sites using MPLS technology, and the enterprise network team is considering rolling out SD-WAN services for all sites.

With regards to the deployment planning, drag and drop the actions from the left onto the corresponding steps on the right.

Select deployment models between virtual server software and hardware-based SD-WAN appliances.	step 1
Conduct a pilot test to observe and record unexpected issues.	step 2
Make an assessment of running protocols and application usage in the network.	step 3
Evaluate existing circuits and performance to get details of connectivity cost and reliability.	step 4
Layout transport plan based on business prioritizes traffic and the unique bandwidth requirements of each specific application.	step 5
Understand the traffic monitoring requirements and capabilities.	step 6

- A. Mastered
 B. Not Mastered

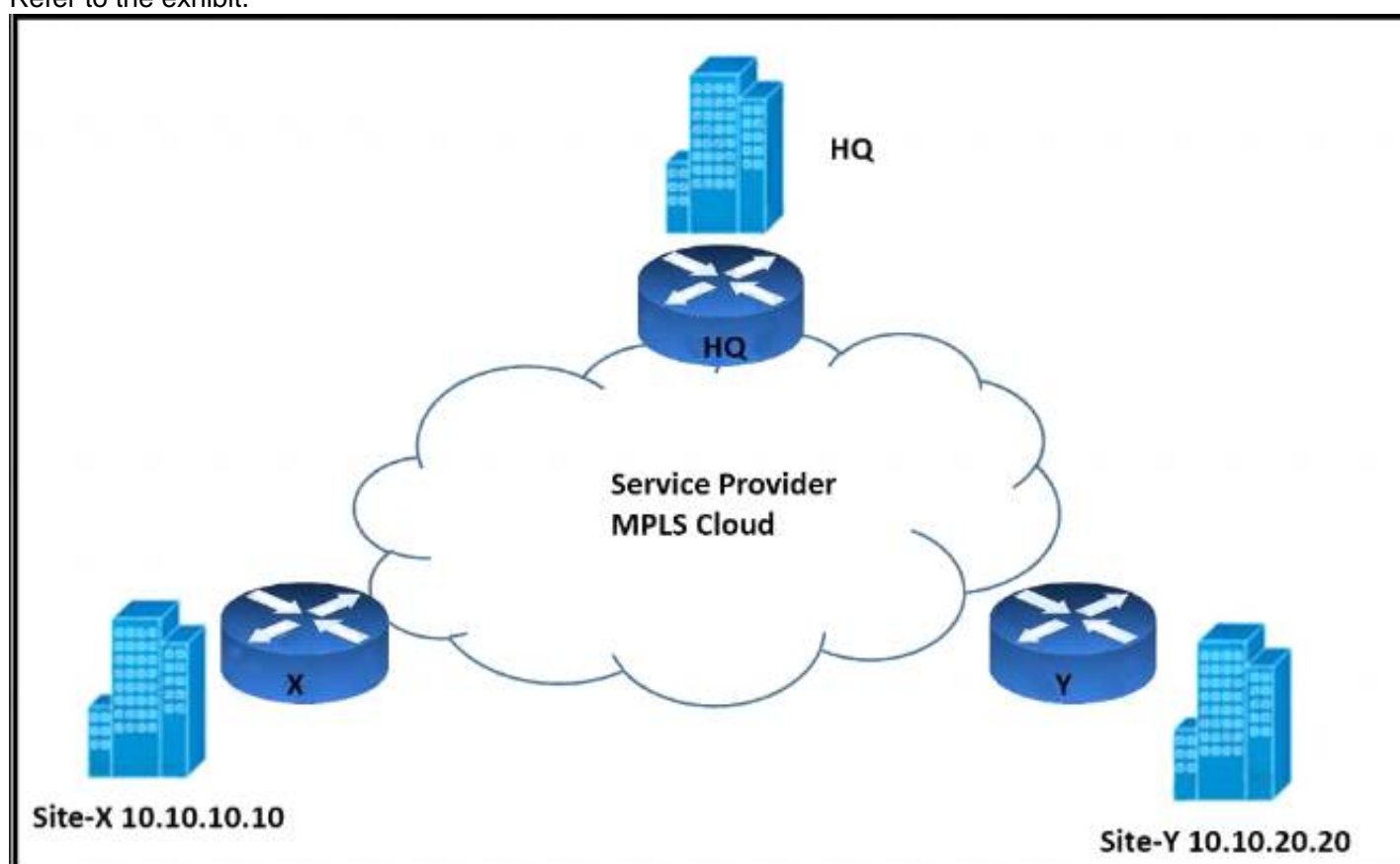
Answer: A

Explanation:

Table Description automatically generated with medium confidence

NEW QUESTION 160

Refer to the exhibit.



An architect must design an enterprise WAN that connects the headquarters with 22 branch offices. The number of remote sites is expected to triple in the next three years. The final solution must comply with these requirements:

- Only the loopback address of each of the enterprise CE X and Y routers must be advertised to the interconnecting service provider cloud network.
- The transport layer must carry the VPNv4 label and VPN payload over the MP-BGP control plane.
- The transport layer must not be under service provider control.

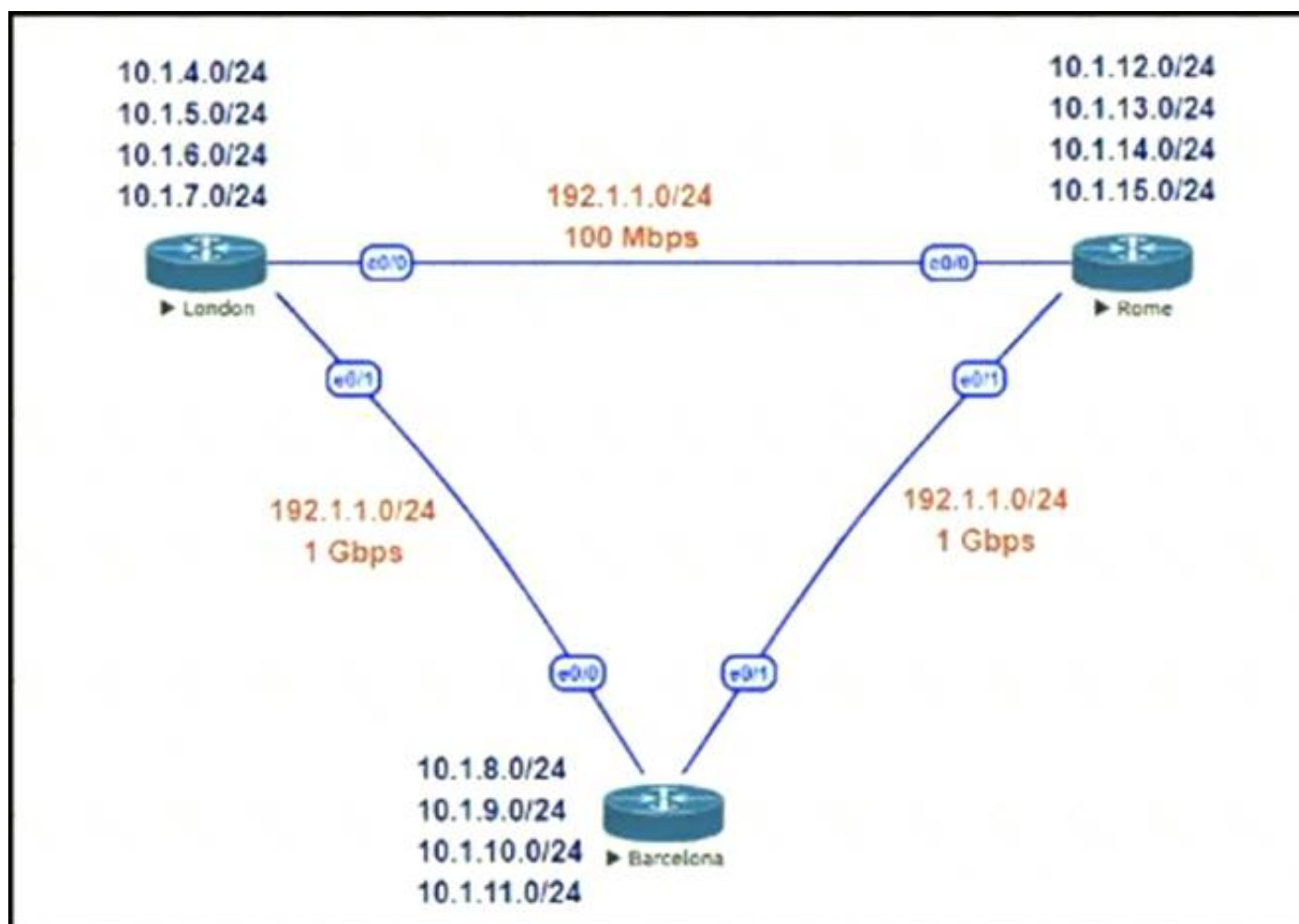
Which enterprise WAN transport virtualization technique meets the requirements?

- A. EIGRP Over the Top
 B. MPLS over BGP over multipoint GRE
 C. DMVPN per VRF
 D. point-to-point GRE per VRF

Answer: B

NEW QUESTION 164

Refer to the exhibit.



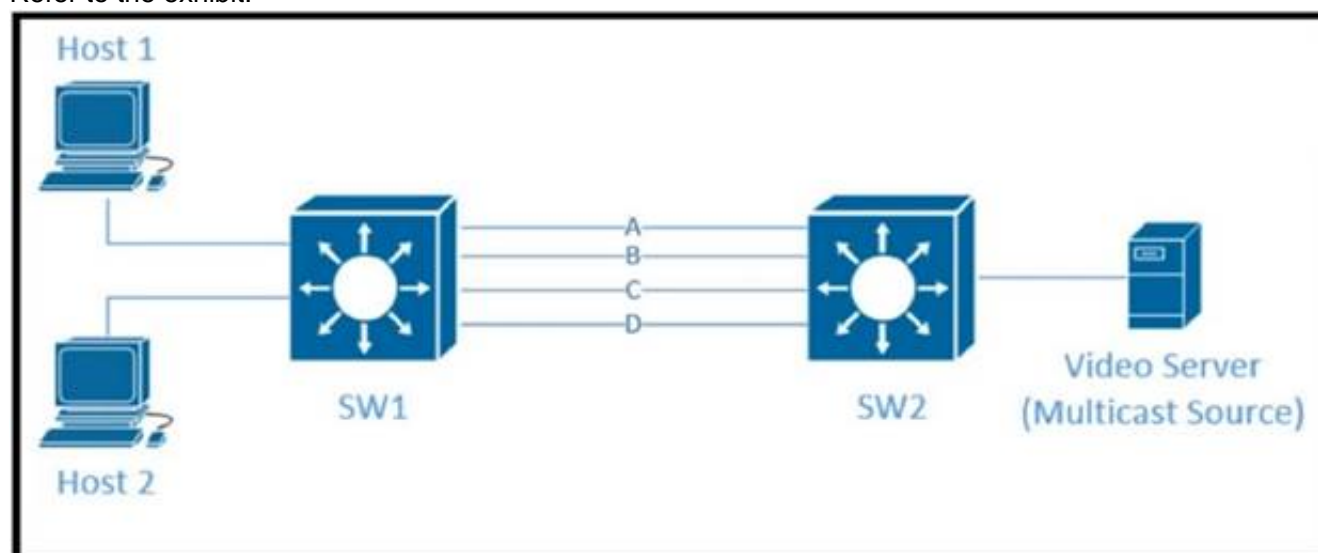
This network is running EIGRP as the routing protocol and the internal networks are being advertised in EIGRP. Based on the link speeds, all traffic between London and Rome is getting propagated via Barcelona and the direct link between London and Rome is not being utilized under normal working circumstances. The EIGRP design should allow for efficiency in the routing table by minimizing the routes being exchanged. The link between London and Rome should be utilized for specific routes. Which two steps accomplish this task? (Choose two.)

- A. Configure EIGRP route summarization on all the interfaces to summarize the internal LAN routes
- B. Filter the routes on the link between London and Barcelona
- C. Filter the routes on the link between London and Rome
- D. Configure route leaking of summary routes on the link between London and Rome

Answer: AD

NEW QUESTION 166

Refer to the exhibit.



Traffic was equally balanced between Layer 3 links on core switches SW1 and SW2 before an introduction of the new video server in the network. This video server uses multicast to send video streams to hosts and now one of the links between core switches is over utilized Which design solution solves this issue?

- A. Add more links between core switches.
- B. Aggregate links Layer 2 link aggregation.
- C. Apply a more granular load- balancing method on SW1.
- D. Apply a more granular load-balancing method on SW2.
- E. Filter IGMP joins on an over -utilized link.

Answer: B

NEW QUESTION 168

An enterprise requires MPLS connected branches to access cloud-based Microsoft 365 services over an SD-WAN solution. Internet access is available only at dual regional hub sites that are connected to the MPLS network. Which connectivity method provides an optimum access method to the cloud-based services if one ISP suffers loss or latency?

- A. Cloud onRamp gateway site
- B. Cloud onRamp SWG
- C. Cloud onRamp
- D. Cloud onRamp SaaS

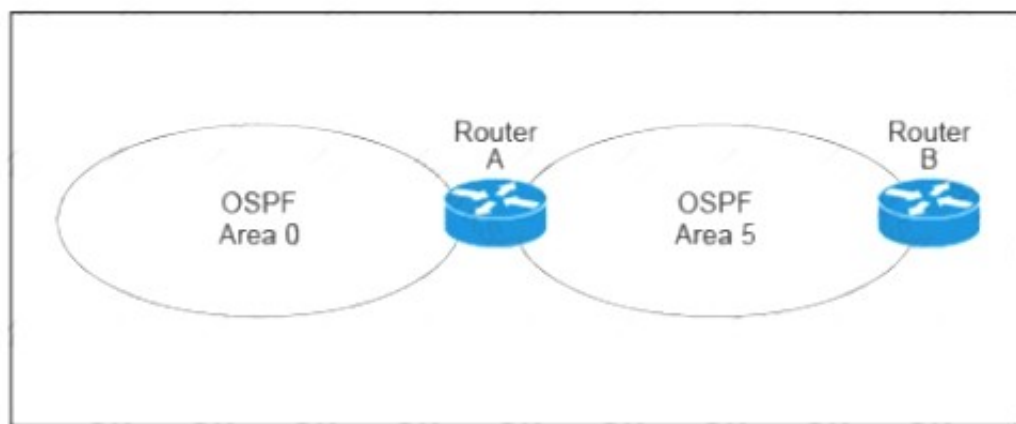
Answer: D

Explanation:

<https://www.cisco.com/c/en/us/td/docs/routers/sdwan/configuration/cloudonramp/vedge-20-x/cloud-onramp-boo>

NEW QUESTION 171

Refer to the exhibit.



A customer runs OSPF with Area 5 between its aggregation router and an internal router. When a network change occurs in the backbone, Area 5 starts having connectivity issues due to the SPF algorithm recalculating an abnormal number of times in Area 5. You are tasked to redesign this network to increase resiliency on the customer network with the caveat that Router B does not support the stub area. How can you accomplish this task*?

- A. Increase the bandwidth on the connection between Router A and Router B
- B. Implement LSA filtering on the ABR, allowing summary routes and preventing more specific routes into Area 5
- C. Create a virtual link to Area 0 from Router B to the ABR
- D. Turn on LSA throttling on all devices in Area 5
- E. Set Area 5 to stubby at the ABR anyway

Answer: B

NEW QUESTION 176

Company XYZ is designing the IS-IS deployment strategy for their multiarea IS-IS domain. They want IS-IS neighbour relationships to be minimized on each network segment and want to optimize the size of the IS-IS LSDB on each router. Which design can be used to meet these requirements?

- A. Design all routers as Level 2 router
- B. Set the links between the routers as Level 1 with the area
- C. Design the network so that the routers connecting to other areas are Level 2 routers and internal routers are Level 1
- D. Design the network so that all routers are Level 1 routers
- E. Design the network so that the routers connecting to other areas are Level 1/Level 2 routers and internal routers are Level 1

Answer: D

NEW QUESTION 179

.....

THANKS FOR TRYING THE DEMO OF OUR PRODUCT

Visit Our Site to Purchase the Full Set of Actual 400-007 Exam Questions With Answers.

We Also Provide Practice Exam Software That Simulates Real Exam Environment And Has Many Self-Assessment Features. Order the 400-007 Product From:

<https://www.2passeasy.com/dumps/400-007/>

Money Back Guarantee

400-007 Practice Exam Features:

- * 400-007 Questions and Answers Updated Frequently
- * 400-007 Practice Questions Verified by Expert Senior Certified Staff
- * 400-007 Most Realistic Questions that Guarantee you a Pass on Your FirstTry
- * 400-007 Practice Test Questions in Multiple Choice Formats and Updatesfor 1 Year