

Juniper

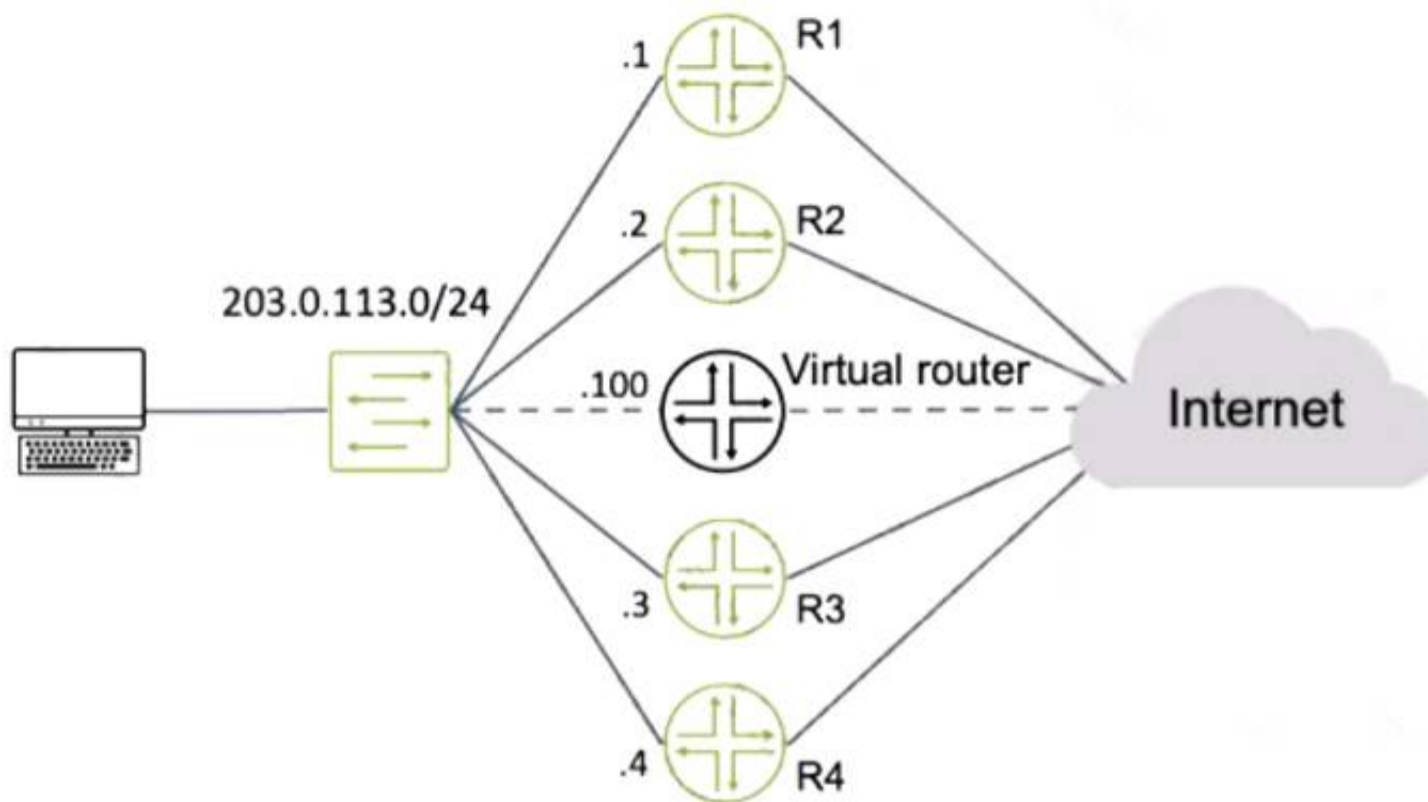
Exam Questions JN0-363

Service Provider Routing and Switching Specialist (JNCIS-SP)



NEW QUESTION 1

Exhibit



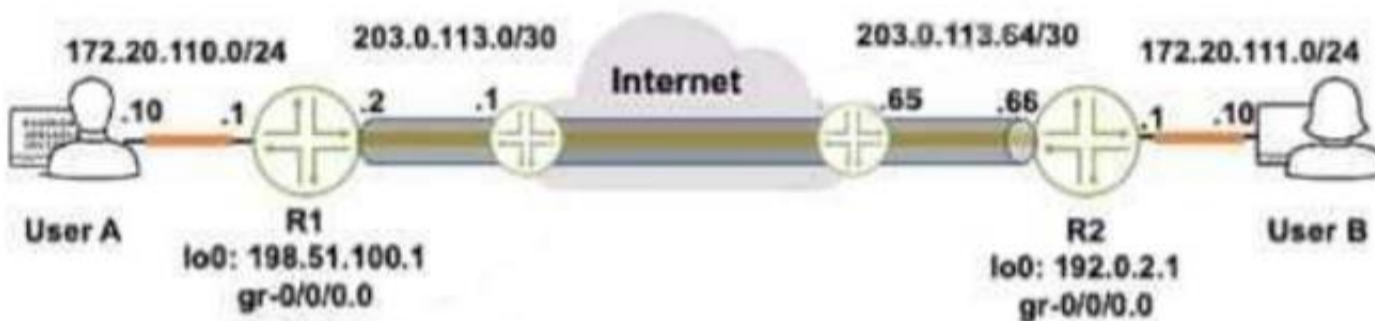
Routers R1 and R4 have a VRRP priority of 90, while R2 and R3 have default VRRP priorities. Referring to the exhibit, which router will be elected as the primary VRRP router?

- A. R3
- B. R4
- C. R2
- D. R1

Answer: D

NEW QUESTION 2

Exhibit



Referring to the exhibit, how do you verify the status of the tunnel from R1?

- A. Issue the ping 172.20.111.10 source 172.20.110.1 command.
- B. Issue the ping 172.20.111.10 source 198.51.100.1 command.
- C. Issue the ping 172.20.111.10 source 203.0.113.2 command.
- D. Issue the ping 172.20.111.10 source 192.0.2.1 command.
- E. Issue the ping 172.20.111.10 source 198.51.100.1 command.

Answer: C

NEW QUESTION 3

How does a Junos device learn about MAC addresses when it is first connected to an Ethernet LAN?

- A. The device sends out a network broadcast message asking for all devices and MAC addresses on the network and stores this information in addition to the interface from which the response was received.
- B. The device learns the destination MAC addresses from traffic in the network and stores this MAC address in addition to the interface from which the traffic was received.
- C. The device learns the source MAC addresses from traffic in the network and stores this MAC address in addition to the interface from which the traffic was received.
- D. The device sends out a network multicast message asking for all devices and MAC addresses on the network and stores this information in addition to the interface from which the response was received.

Answer: D

NEW QUESTION 4

Exhibit

```
[edit]
user@router# show interfaces ge-0/0/0
unit 0 {
    family bridge {
        interface-mode trunk;
        vlan-id-list 101-120;
    }
}
[edit]
user@router# show interfaces ge-0/0/1
flexible-vlan-tagging;
unit 0 {
    vlan-id 200;
    family bridge {
        interface-mode trunk;
        inner-vlan-id-list 101-120;
    }
    ...
}
[edit]
user@router# show bridge-domains
...
[edit]
user@router# show bridge-domains
bd {
    vlan-id-list 101-120;
}
```

Referring to the exhibit, which two statements are correct? (Choose two.)

- A. Traffic ingressing ge-0/0/0 that is tagged with VLAN 101 will egress ge-0/0/1 unchanged.
- B. Traffic ingressing ge-0/0/0 that is tagged with VLAN 100 will be dropped.
- C. Traffic ingressing ge-0/0/0 that is tagged with VLAN 200 will egress ge-0/0/1 with an outer VLAN tag of 200.
- D. Traffic ingressing ge-0/0/0 that is tagged with VLAN 101 will egress ge-0/0/1 with an outer VLAN tag of 200.

Answer: AB

NEW QUESTION 5

Which two LSA types are permitted in OSPF totally stubby areas? (Choose two.)

- A. Type 1
- B. Type 3
- C. Type 5
- D. Type 7

Answer: CD

NEW QUESTION 6

Exhibit

Exhibit

```

user@R2> show ospf route
Topology default Route Table:
Prefix                Path  Route      NH  Metric  NextHop      Nexthop
                    Type  Type      Type
192.168.1.1           Intra AS BR      IP      1 ge-0/0/3.0  172.26.1.1
192.168.1.3           Intra Area BR  IP      1 ge-0/0/1.0  172.26.2.2
172.18.1.0/24         Ext2 Network  IP      0 ge-0/0/3.0  172.26.1.1
172.26.1.0/30         Intra Network  IP      1 ge-0/0/3.0
172.26.2.0/30         Intra Network  IP      1 ge-0/0/1.0
172.26.3.0/30         Intra Network  IP     100 ge-0/0/2.0
172.26.4.0/30         Inter Network  IP      2 ge-0/0/1.0  172.26.2.2
192.168.1.1/32        Ext2 Network  IP      1 ge-0/0/3.0  172.26.1.1
192.168.1.2/32        Intra Network  IP      0 lo0.0
192.168.1.3/32        Intra Network  IP      1 ge-0/0/1.0  172.26.2.2
192.168.1.4/32        Inter Network  IP      2 ge-0/0/1.0  172.26.2.2

```

Which prefix in the output shown in the exhibit is an external prefix injected by an OSPF router?

- A. 192.168.1.3
- B. 172.18.1.0/24
- C. 192.108.1.4
- D. 172.26.4.0/30

Answer: D

NEW QUESTION 7

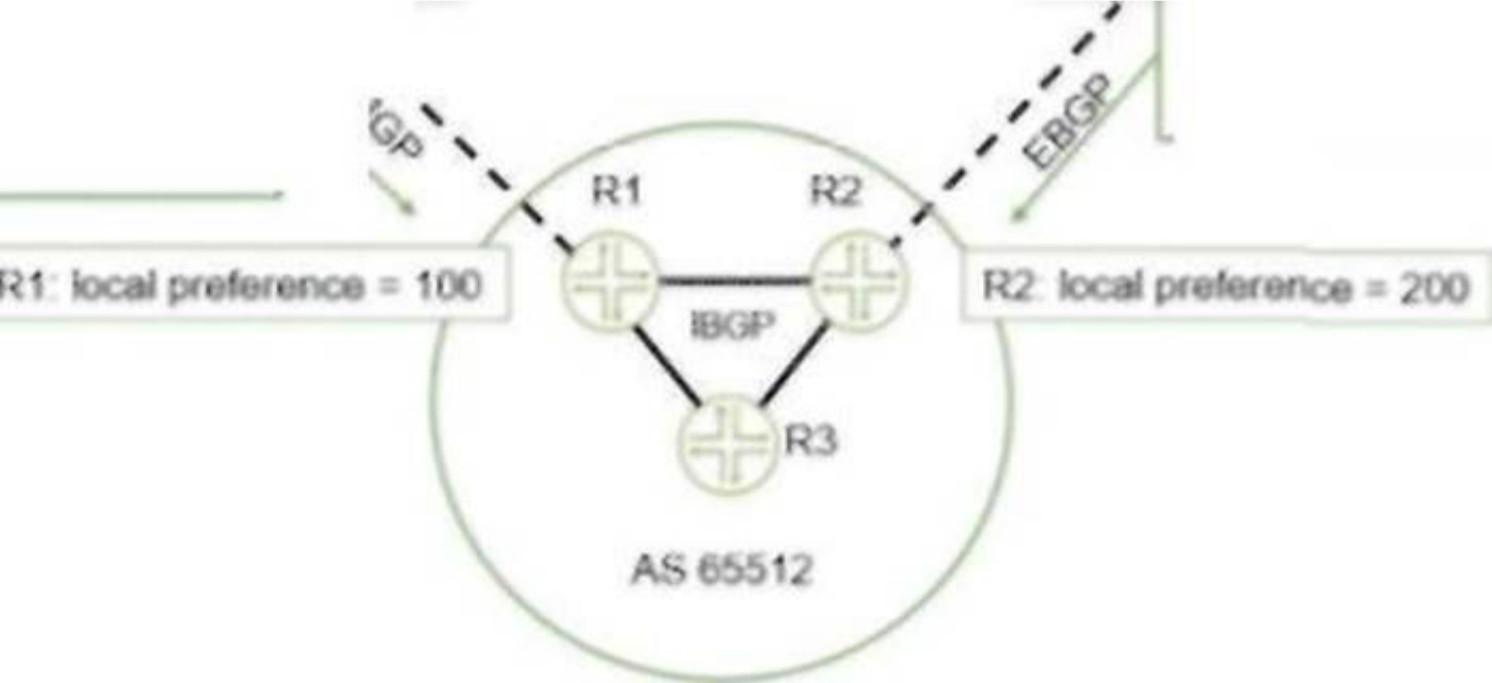
The segment touting SRGB start label ls 10,000 and the SRGB index range is 500.
 In this scenario, which two statements are correct? (Choose two.)

- A. The first usable label is 10,001.
- B. The last usable label is 10.501.
- C. The last usable label is 10,499.
- D. The first usable label ls 10,000.

Answer: CD

NEW QUESTION 8

Exhibit
 S Exhibit
 LSI1 A AS 65501 ISPB AS 65502
 Advertised Prefixes: 172.20.0.0/24 172.20.20.0/24 172.20.21.0/24
 \ N
 Advertised Prefixes: 172.20.0.0/24 172.20.1.0/24



Referring to the exhibit, which two statements are correct? (Choose two.)

- A. Devices in AS 65512 will prefer ISP A for traffic destined to the 172.20.21.0/24 network.
- B. Devices In AS 65512 will prefer ISP A for traffic destined to the 172.20.0.0/24 network.
- C. Devices in AS 65512 will prefer ISP B for traffic destined to the 172.20.21.0/24 network.

D. Devices In AS 65512 will prefer ISP B for traffic destined to the 172.20.0.0/24 network.

Answer: C

NEW QUESTION 9

Which configuration selling prohibits a static route from being redistributed by a dynamic routing protocol?

- A. route-filter
- B. no-readvertise
- C. qualified-next-hop
- D. passive

Answer: B

NEW QUESTION 10

You are bringing a new network online with three MX Series devices enabled for STP. No root bridge priority has been configured. Which statement is true in this scenario?

- A. The device with the lowest MAC address will be elected as the root bridge.
- B. The device with the highest MAC address will be elected as the root bridge.
- C. The device with the lowest numerical lo0 IP address will be elected as the root bridge.
- D. The device with the highest numerical lo0 IP address will be elected as The bridge.

Answer: A

NEW QUESTION 10

Which BGP attribute Is used to detect touting loops?

- A. AS path
- B. MED
- C. local preference
- D. next hop

Answer: A

NEW QUESTION 14

Which two statements ate correct about the community BGP attribute on a Junos device? (Choose two.)

- A. The community attribute is a mandatory BGP attribute.
- B. If the community attribute is present, it is ignored and deleted in the BGP updates.
- C. If the community attribute is present, it should be passed unchanged in the BGP updates.
- D. The community attribute is an optional BGP attribute.

Answer: AC

NEW QUESTION 19

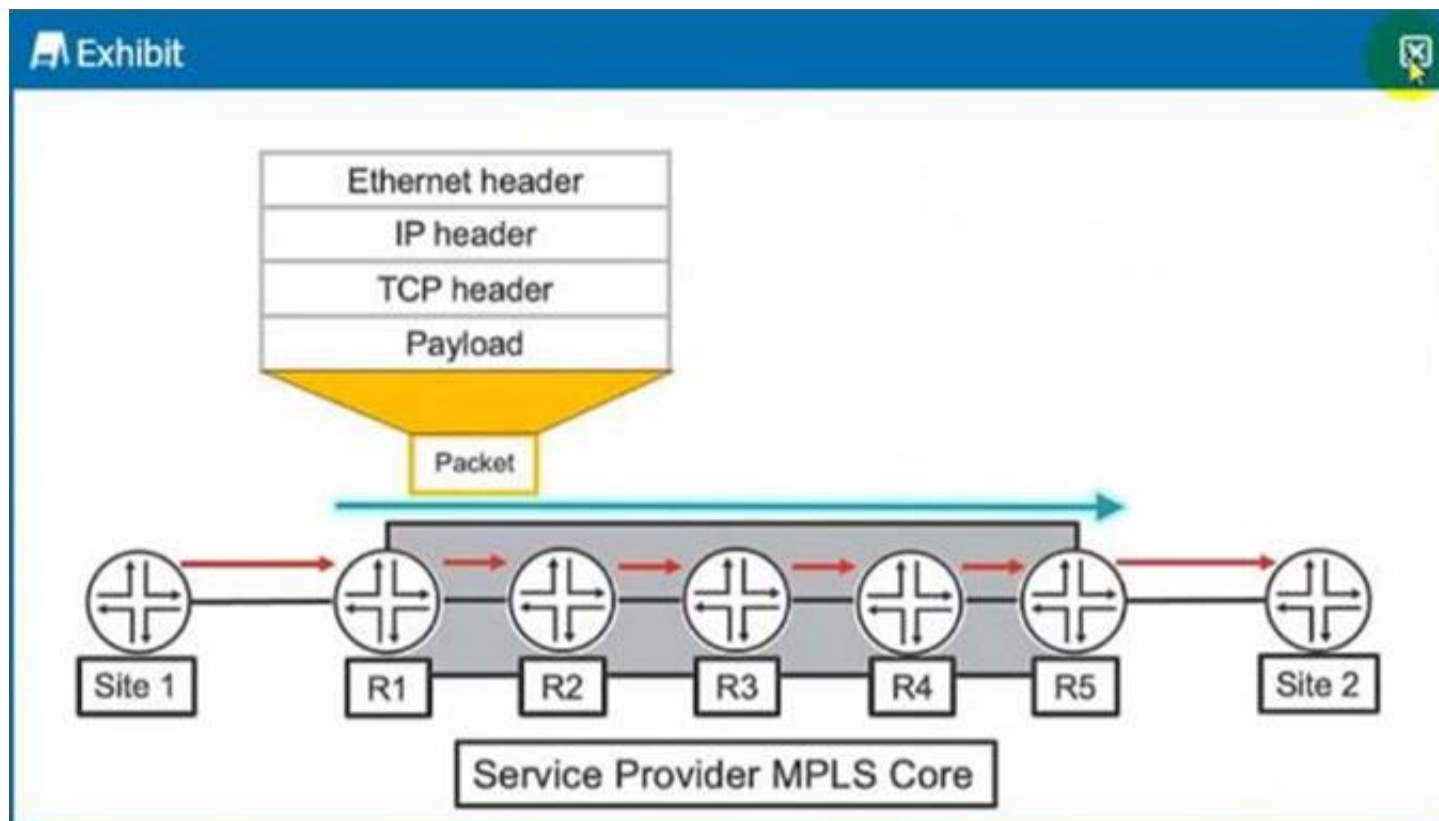
Which statement is correct about IS-IS?

- A. IS-IS is a distance vector routing protocol.
- B. IS-IS is a path vector routing protocol.
- C. IS-IS is a link-state routing protocol.
- D. IS-IS is a classful routing protocol.

Answer: C

NEW QUESTION 24

Exhibit



Which two statements are correct about the actions taken as the packet traverses the service provider MPLS network from Site 1 to Site 2 as shown in the exhibit? (Choose two.)

- A. R2 will perform a lookup using the mpls.0 table.
- B. R1 will perform a lookup using the inet.3 table.
- C. R1 will perform a lookup using the mpls.0 table.
- D. R2 will perform a lookup using the inet.3 table.

Answer: A

NEW QUESTION 29

Which new field is added to an IPv6 header as compared to IPv4?

- A. version
- B. checksum
- C. fragment offset
- D. flow label

Answer: D

NEW QUESTION 34

You are bringing a new network online with three IS-IS routers using default Junos election priorities. The routers are configured as Level 2 only IS-IS routers. Which statement is true about the DIS election in this scenario?

- A. The router with the highest MAC address will be elected as the DIS.
- B. The router with the highest numerical lo0 IP address will be elected as the DIS.
- C. The router with the lowest numerical lo0 IP address will be elected as the DIS.
- D. The router with the lowest MAC address will be elected as the DIS.

Answer: B

NEW QUESTION 39

.....

Thank You for Trying Our Product

We offer two products:

1st - We have Practice Tests Software with Actual Exam Questions

2nd - Questions and Answers in PDF Format

JN0-363 Practice Exam Features:

- * JN0-363 Questions and Answers Updated Frequently
- * JN0-363 Practice Questions Verified by Expert Senior Certified Staff
- * JN0-363 Most Realistic Questions that Guarantee you a Pass on Your First Try
- * JN0-363 Practice Test Questions in Multiple Choice Formats and Updates for 1 Year

100% Actual & Verified — Instant Download, Please Click
[Order The JN0-363 Practice Test Here](#)