

Exam Questions AZ-140

Configuring and Operating Windows Virtual Desktop on Microsoft Azure

<https://www.2passeasy.com/dumps/AZ-140/>



NEW QUESTION 1

- (Topic 3)

You have a Windows Virtual Desktop host pool that runs Windows 10 Enterprise multi-session. You need to configure automatic scaling of the host pool to meet the following requirements: Distribute new user sessions across all running session hosts. Automatically start a new session host when concurrent user sessions exceed 30 users per host. What should you include in the solution?

- A. an Azure Automation account and the depth-first load balancing algorithm
- B. an Azure Automation account and the breadth-first load balancing algorithm
- C. an Azure load balancer and the breadth-first load balancing algorithm
- D. an Azure load balancer and the depth-first load balancing algorithm

Answer: A

Explanation:

Reference:

<https://docs.microsoft.com/en-us/azure/virtual-desktop/host-pool-load-balancing> <https://docs.microsoft.com/en-us/azure/virtual-desktop/configure-host-pool-load-balancing>

NEW QUESTION 2

- (Topic 3)

Your on-premises network contains 20 Windows 10 devices. You have an Azure Virtual Desktop deployment. You need to deploy the Microsoft Remote Desktop client (MSRDC) to the devices. The MSRDC must be available to everyone who sign in to the devices. What should you do?

- A. Install the MSRDC by using msixexec.exe and the ALLUSERS=1 command line option.
- B. Install the MSRDC by using msixexec.exe and the ALLUSERS=2 command line option.
- C. Install the MSRDC by using msixexec.exe and the MSIINSTALLPERUSER=1 command line option.

Answer: A

NEW QUESTION 3

- (Topic 3)

You have an Azure Virtual Desktop personal host pool named Pool1 that contains 20 Azure AD-joined session hosts. You need to ensure that only approved virtual machine extensions are installed on the Pool 1 session hosts. The solution must minimize administrative effort. What should you use?

- A. Azure Resource Manager (ARM) templates
- B. Azure Policy
- C. Windows Admin Center
- D. Group Policy

Answer: B

NEW QUESTION 4

DRAG DROP - (Topic 3)

You have an Azure subscription that contains a virtual machine named VM1. VM1 runs a customized version of Windows 10 Enterprise. You generalize the operating system on VM1 and shut down the virtual machine. You need to deploy additional virtual machines based on an image of VM1 by using the Azure portal. Which three actions should you perform in sequence? To answer, move the appropriate actions from the list of actions to the answer area and arrange them in the correct order. Select and Place:

Actions

- Create an image version.
- Create an Azure compute gallery.
- Generate a snapshot of VM1.
- Create an image definition.
- Back up VM1.

Answer Area



- A. Mastered
- B. Not Mastered

Answer: A

Explanation:

A picture containing graphical user interface Description automatically generated

NEW QUESTION 5

- (Topic 3)

You have a Windows Virtual Desktop deployment.
 You need to provide external users with access to the deployment. The external users have computers that run Windows 10 Pro and Windows 10 Enterprise. The users do not have the ability to install applications.
 What should you recommend that the users use to connect to the deployment?

- A. Microsoft Edge
- B. RemoteApp and Desktop Connection
- C. Remote Desktop Manager
- D. Remote Desktop Connection

Answer: A

Explanation:

Reference:

<https://docs.microsoft.com/en-us/azure/active-directory/governance/entitlement-management-external-users>


<https://docs.microsoft.com/en-us/azure/virtual-desktop/connect-web>

NEW QUESTION 6

HOTSPOT - (Topic 3)

You create an Azure Virtual Desktop host pool as shown in the following exhibit.

Create a host pool ...

 Validation passed.

Basics

Virtual Machines

Workspace

Advanced

Tags

Review + create

Basics

Subscription

Resource group

Host pool name

Location

Host pool type

Max session limit

Load balancing algorithm

Azure Pass - Sponsorship

RG1

HostPool1

West Europe

Pooled

10

Depth-first

Virtual Machines

Resource group

Name prefix

Virtual machine location

Availability options

Availability zone

Image type

Image

Virtual machine size

Number of VMs

OS disk type

Use managed disks

Virtual network

Boot Diagnostics

Subnet

Network security group

Public inbound ports

Specify domain or unit

Domain Join Type

RG1

vm

West Europe

Availability zone

3

Gallery

Windows 11 Enterprise multi-session

Standard D4s v3

5

Standard SSD

Yes

VNet1

Enable with managed storage account (recommended)

default(10.0.0.0/24)

Basic

None

No

Active Directory

Use the drop-down menus to select the answer choice that answers each question based on the information presented in the graphic.

NOTE: Each correct selection is worth one point. Hot Area:

What is the maximum number of concurrent user sessions for the host pool?

5
10
15
30
50
150

Where will the first five user sessions be created?

On five different session hosts
On the same session host
On three different session hosts

- A. Mastered
B. Not Mastered

Answer: A

Explanation:

What is the maximum number of concurrent user sessions for the host pool?

5
10
15
30
50
150

Where will the first five user sessions be created?

On five different session hosts
On the same session host
On three different session hosts

NEW QUESTION 7

- (Topic 3)

You have a Azure Virtual Desktop deployment.

In Azure Advisor, you discover the following recommendation related to Azure Virtual Desktop:

- Impact Medium
- Description: No validation environment enabled
- Potential Benefit Ensure business continuity through AVD service deployments
- Impacted Resource:1 Host Pool

What can you validate by implementing the recommendations?

- A. Capacity requirements of the session hosts
B. Security settings of Azure Virtual Desktop
C. Preview features for Azure Virtual Desktop
D. Azure Site Recovery failover of the session hosts

Answer: D

Explanation:

Validation environments are used to test and validate Azure Virtual Desktop deployments before they are made available to users. This can include testing the capacity of the session hosts, the performance of the deployment, and the configuration of security settings. By implementing a validation environment, you can ensure that the Azure Virtual Desktop deployment is working correctly and that there are no issues that could impact business continuity. This can help to ensure a smooth user experience and minimize downtime.

NEW QUESTION 8

HOTSPOT - (Topic 3)

You have a Windows Virtual Desktop deployment.

You plan to create the host pools shown in the following table.

Name	Requirement
Pool1	<ul style="list-style-type: none"> Will be directly assigned to users in the graphics department at your company Will run heavy graphic rendering and compute-intensive applications Must support premium storage
Pool2	<ul style="list-style-type: none"> Pooled virtual machines for approximately 10 users Will run Microsoft Office 365 apps Will require calling and meeting features in Microsoft Teams Must support premium storage

You need to recommend the virtual machine size for each host pool. The solution must minimize costs.

Which size should you recommend for each pool? To answer, select the appropriate

NOTE: Each correct selection is worth one point.

Pool1:

▼

Av2-series
Dsv4-series
NVv3-series

Pool2:

▼

Av2-series
Dsv4-series
NVv3-series

- A. Mastered
B. Not Mastered

Answer: A

Explanation:

Pool1:

▼

Av2-series
Dsv4-series
NVv3-series

Pool2:

▼

Av2-series
Dsv4-series
NVv3-series

NEW QUESTION 9

DRAG DROP - (Topic 3)

After you answer a question in this section, you will NOT be able to return to it. As a result, these questions will not appear in the review screen.

You have an Azure Virtual Desktop host pool that runs Windows 10 Enterprise multi-session.

User sessions are load-balanced between the session hosts. Idle session timeout is 30 minutes.

You plan to shut down a session host named Host1 to perform routine maintenance. You need to prevent new user sessions to Host1 without disconnecting active user sessions.

Solution: From the properties of the virtual machine of Host1, you configure the Auto-shutdown settings.

Does this meet the goal?

- A. Yes
B. No

Answer: B

Explanation:

Reference:

<https://docs.microsoft.com/en-us/azure/virtual-desktop/drain-mode>

NEW QUESTION 10

- (Topic 3)

You have an Azure Virtual Desktop deployment and the users shown in the following table.

Name	User device operating system	Preferred web browser
User1	MacOS	Mozilla Firefox
User2	Windows 10	Internet Explorer
User3	iOS	Apple Safari

All the users plan to use a web browser to access Azure Virtual Desktop resources. Which users can connect to Azure Virtual Desktop by using their preferred browser?

- A. User2 only
- B. User1 only
- C. User1, User2, and User3
- D. User2 and User3 only
- E. User1 and User2 only

Answer: C

Explanation:

<https://learn.microsoft.com/en-us/azure/virtual-desktop/users/connect-web>

NEW QUESTION 10

HOTSPOT - (Topic 3)

You have an Azure subscription.

You plan to deploy an Azure Virtual Desktop solution that will contain Windows 10 multi- session hosts in a single host pool. The solution has the requirements shown in the following table.

Requirement	Value
Total users	1,200
Shifts per day	3
Users per shift	400
User workload type	Medium
Concurrent users per session host	16

You need to configure the session host for the host pool. The solution must minimize costs. How many session hosts should the host pool contain, and how many vCPUs should each

session host have? To answer, select the appropriate options in the answer area. NOTE: Each correct selection is worth one point.

Session hosts:

25
75
400
1200

vCPUs per session host:

2
4
8
16

- A. Mastered
- B. Not Mastered

Answer: A

Explanation:

Session hosts:

25
75
400
1200

vCPUs per session host:

2
4
8
16

NEW QUESTION 13

- (Topic 3)

You have a Windows Virtual Desktop host pool that contains 20 Windows 10 Enterprise multi-session hosts. Users connect to the Windows Virtual Desktop deployment from computers that run Windows 10. You plan to implement FSLogix Application Masking. You need to deploy Application Masking rule sets. The solution must minimize administrative effort. To where should you copy the rule sets?

- A. the FSLogix profile container of each user
- B. C:\Program Files\FSLogix\Apps\Rules on every Windows 10 computer
- C. C:\Program Files\FSLogix\Apps\Rules on every session host

Answer: C

Explanation:

Reference:

<https://docs.microsoft.com/en-us/azure/virtual-desktop/fslogix-office-app-rule-editor>

NEW QUESTION 15

- (Topic 3)

Note: This question is part of a series of questions that present the same scenario. Each question in the series contains a unique solution that might meet the stated goals. Some question sets might have more than one correct solution, while others might not have a correct solution.

After you answer a question in this section, you will NOT be able to return to it. As a result, these questions will not appear in the review screen.

You have a Windows Virtual Desktop host pool named Pool1 that is integrated with an Azure Active Directory Domain Services (Azure AD DS) managed domain.

You need to configure idle session timeout settings for users that connect to the session hosts in Pool1.

Solution: From the Azure portal, you modify the Session behavior settings in the RDP Properties of Pool1.

Does that meet the goal?

- A. Yes
- B. No

Answer: B

NEW QUESTION 17

DRAG DROP - (Topic 3)

You plan to deploy Windows Virtual Desktop.

You need to create Azure NetApp Files storage to store FSLogix profile containers.

Which four actions should you perform in sequence after you register the NetApp Resource Provider? To answer, move the appropriate actions from the list of actions to the answer area and arrange them in the correct order.

NOTE: More than one order of answer choices is correct. You will receive credit for any of the correct orders you select.

Actions

Create a NetApp account.

Create and assign a managed identity.

Create a volume.

Create a capacity pool.

Create an Azure file share.

Configure an Active Directory connection.

Answer Area



- A. Mastered
- B. Not Mastered

Answer: A

Explanation:

- * 1. Set up Azure NetApp Files account
 - * 2. Create capacity pool
 - * 3. Join Active Directory connection
 - * 4. Create new volume
- <https://docs.microsoft.com/en-us/azure/virtual-desktop/create-fslogix-profile-container>

NEW QUESTION 22

- (Topic 3)

You deploy a Windows Virtual Desktop host pool named Pool1.
You have an Azure Storage account named store1 that stores FSLogix profile containers in a share named profiles.
You need to configure the path to the storage containers for the session hosts. Which path should you use?

- A. \\store1.blob.core.windows.net\profiles
- B. https://store1.file.core.windows.net/profiles
- C. \\store1.file.core.windows.net\profiles
- D. https://store1.blob.core.windows.net/profiles

Answer: C

Explanation:

<https://docs.microsoft.com/en-us/azure/virtual-desktop/store-fslogix-profile> Azure offers multiple storage solutions that you can use to store your FSLogix profile container. We recommend storing FSLogix profile containers on Azure Files for most of our customers.

NEW QUESTION 23

- (Topic 3)

You have an Azure Virtual Desktop deployment that contains the resources shown in the following table.

Name	Description
HostPool1	Personal host pool that contains five session hosts
VNET1	Azure virtual network with a subnet named Subnet1
Subnet1	Virtual network subnet to which the five session hosts are connected

You need to enable just-in-time (JIT) VM access for all the session hosts. What should you do first?

- A. Deploy Azure Bastion to VNET1.
- B. Assign network security groups (NSGs) to the network interfaces of the five session hosts.
- C. Configure Access control (IAM) for HostPool1.
- D. Assign a network security group (NSG) to Subnet1.

Answer: B

NEW QUESTION 26

- (Topic 3)

Note: This question is part of a series of questions that present the same scenario. Each question in the series contains a unique solution that might meet the stated goals. Some question sets might have more than one correct solution, while others might not have a correct solution.

After you answer a question in this section, you will NOT be able to return to it. As a result, these questions will not appear in the review screen.

You have an Azure Virtual Desktop host pool that runs Windows 10 Enterprise multi-session.

User sessions are load-balanced between the session hosts. Idle session timeout is 30 minutes.

You plan to shut down a session host named Host1 to perform routine maintenance.

You need to prevent new user sessions to Host1 without disconnecting active user

Solution: From the host pool, you remove Host1 from the session host list. Does this meet the goal?

- A. Yes
- B. No

Answer: B

Explanation:

Reference:

<https://docs.microsoft.com/en-us/azure/virtual-desktop/drain-mode>

NEW QUESTION 29

HOTSPOT - (Topic 3)

You have an Azure Virtual Desktop host pool that contains 10 session hosts.

You plan to configure each session host to use an FSLogix profile container that will exclude specific folders in the user profile.

You need to perform the following configurations:

- Create a configuration file to list the excluded profile folders.
- Identify which registry setting will distribute the file to each session host automatically.

What should you name the configuration file, and which registry setting should you identify?
 NOTE: Each correct selection is worth one point.

Answer Area

File name:

▼

Exclude.xml

Redirect.xml

Redirections.xml

Registry setting:

▼

KeepLocalDir

NoProfileContainingFolder

RedirXMLSourceFolder

- A. Mastered
- B. Not Mastered

Answer: A

Explanation:

Graphical user interface, text, application Description automatically generated

NEW QUESTION 32

DRAG DROP - (Topic 3)

You have an Azure Virtual Desktop deployment.

You plan to use Azure NetApp Files to store FSLogix profile containers. You need to configure an Azure NetApp Files account.

Which three actions should you perform in sequence? To answer, move the appropriate actions from the list of actions to the answer area and arrange them in the correct order.

Actions

Create a file share.

Configure an Active Directory connection.

Create a capacity pool.

Create a volume.

Configure a Microsoft-managed encryption key.

Answer Area

>

<

- A. Mastered
- B. Not Mastered

Answer: A

Explanation:

Actions

Create a file share.

Configure an Active Directory connection.

Create a capacity pool.

Create a volume.

Configure a Microsoft-managed encryption key.

Answer Area

Create a capacity pool.

Create a volume.

Configure a Microsoft-managed encryption key.

NEW QUESTION 37

- (Topic 3)

You have an Azure Virtual Desktop host pool.

You add a French language pack to each session host in the host pool.

Several days later, users report that English displays when they connect to Azure Virtual Desktop.

After an investigation, you discover that the French language pack was removed, and the session hosts reverted to English.

You need to ensure that the French language pack is always available on the session hosts.

What should you do?

- A. Apply a Group Policy setting that blocks the cleanup of unused language packs.
- B. Apply a Group Policy setting to disable the Time & language settings.
- C. Configure the international settings on each host.
- D. Assign a default time zone on each host.

Answer: B

Explanation:

https://docs.microsoft.com/en-us/windows-hardware/manufacture/desktop/languages-overview?view=windows-11#block-cleanup-of- unused-language-packs

NEW QUESTION 39

HOTSPOT - (Topic 3)

You have an Azure Virtual Desktop Deployment that contains a workspace named Workspace1 and a user named User1. Workspace1 contains a Desktop application group named Pool1Desktop.

At 09:00, you create a conditional access policy that has the following settings:

? Assignments:

- Users and groups: User1
- Cloud apps or actions: Azure Virtual Desktop
- Conditions: 0 conditions selected

? Access controls

- Grant: Grant access, Require multi-factor authentication
- Sessions: Sign-in frequency 1 hour

User1 performs the actions shown in the following table.

For each of the following statements, select Yes if the statement is true. Otherwise, select No.

NOTE: Each correct selection is worth one point.

Statements	Yes	No
User1 is prompted for multi-factor authentication (MFA) at 09:10.	<input type="radio"/>	<input type="radio"/>
User1 is prompted for multi-factor authentication (MFA) at 10:20.	<input type="radio"/>	<input type="radio"/>
User1 is prompted for multi-factor authentication (MFA) at 13:50.	<input type="radio"/>	<input type="radio"/>

- A. Mastered
- B. Not Mastered

Answer: A

Explanation:

Statements	Yes	No
User1 is prompted for multi-factor authentication (MFA) at 09:10.	<input checked="" type="radio"/>	<input type="radio"/>
User1 is prompted for multi-factor authentication (MFA) at 10:20.	<input type="radio"/>	<input checked="" type="radio"/>
User1 is prompted for multi-factor authentication (MFA) at 13:50.	<input checked="" type="radio"/>	<input type="radio"/>

NEW QUESTION 44

HOTSPOT - (Topic 3)

You have an Azure virtual machine named VM1 that runs Windows 10 Enterprise multi- session.

You plan to add language packs to VM1 and create a custom image of VM1 for a Windows Virtual Desktop host pool.

You need to ensure that modern apps can use the additional language packs when you deploy session hosts by using the custom image.

Which command should you run first? To answer, select the appropriate options in the answer area.

NOTE: Each correct selection is worth one point.

Disable-ScheduledTask

Enable-ScheduledTask

New-ScheduledTask

Start-AppBackgroundTask

-TaskPath "\\Microsoft\\Windows\\AppxDeploymentClient\\" -TaskName

"License Validation"

"Pre-staged app cleanup"

"RemoteFXvGPUDisableTask"

- A. Mastered
- B. Not Mastered

Answer: A

Explanation:



NEW QUESTION 47

- (Topic 3)

You have an Azure Virtual Desktop deployment that contains a host pool. The host pool contains 15 session hosts. All the sessions hosts have FSLogix installed. You need to configure the path to where the user profiles are stored. The solution must minimize administrative effort. Which registry setting should you use?

- A. VHDLocations
- B. CCDLocations
- C. ProfileDirSDDL
- D. FlipFlopProfileDirectoryName

Answer: A

NEW QUESTION 48

- (Topic 3)

You have an Azure Virtual Desktop pooled host pool named HostPool1. You need to dynamically allocate resources to HostPool1 based on the number of sessions for each host. What should you create?

- A. a load balancer rule
- B. a scaling plan
- C. a virtual machine scale set
- D. an availability set

Answer: B

NEW QUESTION 53

- (Topic 3)

You have a Windows Virtual Desktop host pool. You need to install Microsoft Antimalware for Azure on the session hosts. What should you do?

- A. Add an extension to each session host.
- B. From a Group Policy Object (GPO), enable Windows 10 security features.
- C. Configure the RDP Properties of the host pool.
- D. Sign in to each session host and install a Windows feature.

Answer: A

Explanation:

Reference:
<https://docs.microsoft.com/en-us/azure/security/fundamentals/antimalware>

NEW QUESTION 55

- (Topic 3)

You have an Azure subscription that contains the resources shown in the following table.

Name	Description
AVDVM-0	A virtual machine used in a pooled virtual machine set
share1	An Azure file share that stores FSLogix profile containers
Image1	A custom Windows 10 image in a shared image gallery
Image2	A custom Windows Server 2019 image stored in Azure Blob storage

You create a recovery services vault named Vault1. Which resources can you back up using Azure Backup to Vault1?

- A. AVDVM-0 only
- B. AVDVM-0 and share1 only
- C. AVDVM-0, Image1 and Image2 only
- D. AVDVM-0. share1 and Image1 only
- E. AVDVM-0. share1. Image1 and Image2

Answer: B

Explanation:

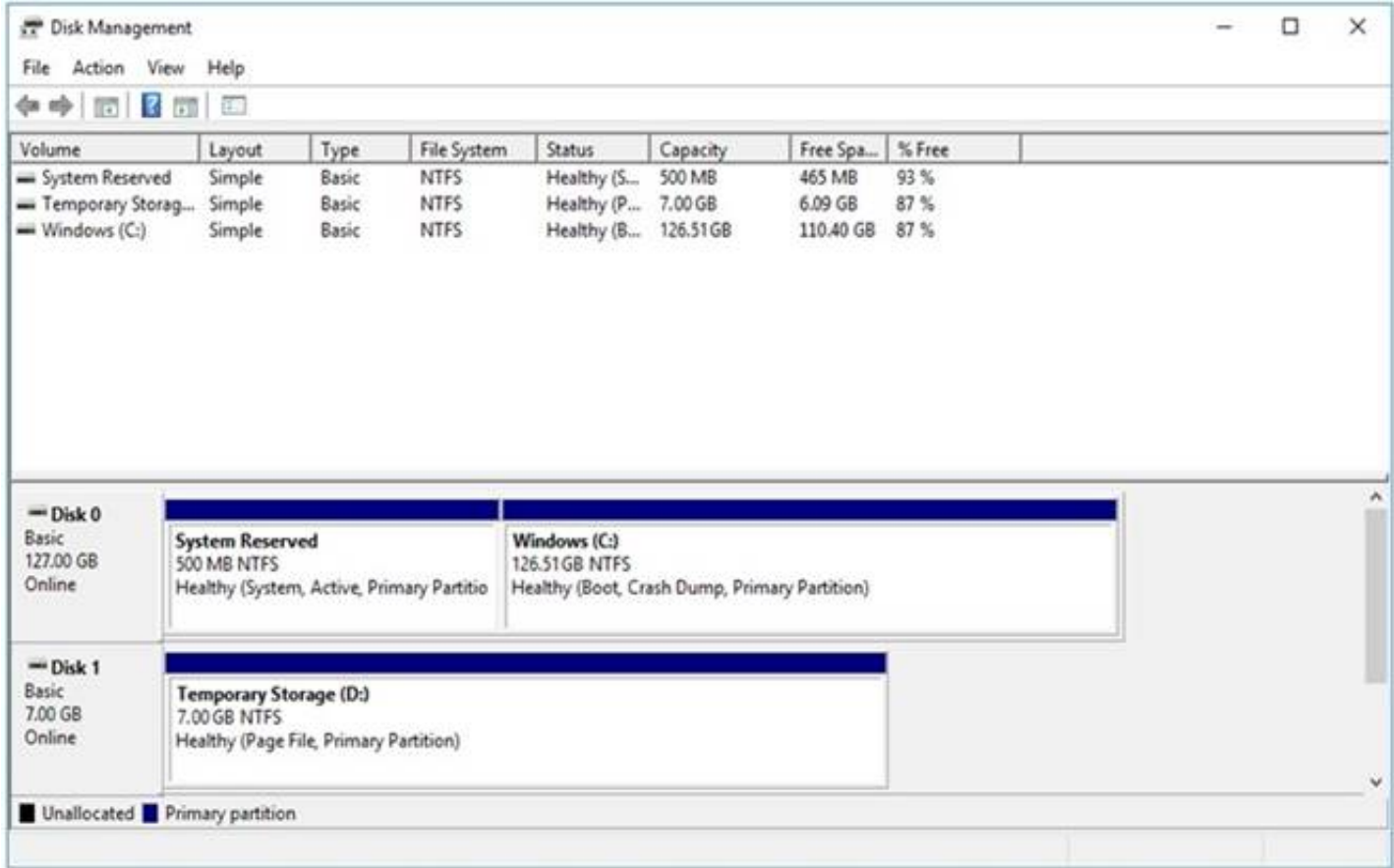
https://docs.microsoft.com/en-us/azure/backup/backup-overview#what-can-i- back-up Operational backup of blobs is a local backup solution. So the backup data isn't transferred to the Backup vault

NEW QUESTION 60

DRAG DROP - (Topic 3)

You have a Windows Virtual Desktop deployment.

You have a session host named Host1 that has the disk layout shown in the exhibit. (Click the Exhibit tab.)



You plan to deploy an app that must be installed on D. The app requires 500 GB of disk space.
You need to add a new data disk that will be assigned the drive letter D. The solution must maintain the current performance of Host1.
Which four actions should you perform in sequence? To answer, move the appropriate actions from the list of actions to the answer area and arrange them in the correct order.

Actions

Move the page file to drive C.

Move the page file to Temporary Storage.

Change the drive letter of Temporary Storage (D:).

Mark Temporary Storage (D:) as **Active**.

Add the new disk and assign drive D.

Move the page file to System Reserved.

Answer Area

⏪

⏩

⏴

⏵

- A. Mastered
- B. Not Mastered

Answer: A

Explanation:

Actions

Move the page file to drive C.

Move the page file to Temporary Storage.

Change the drive letter of Temporary Storage (D:).

Mark Temporary Storage (D:) as **Active**.

Add the new disk and assign drive D.

Move the page file to System Reserved.

Answer Area

Move the page file to drive C.

Change the drive letter of Temporary Storage (D:).

Add the new disk and assign drive D.

Move the page file to Temporary Storage.

NEW QUESTION 64

HOTSPOT - (Topic 3)

You have an Azure Virtual Desktop deployment that contains the session hosts shown in the following table.

Name	Configuration
Host1	RDP Shortpath for managed networks is enabled.
Host2	RDP Shortpath for managed networks is not configured.

You have the users shows in the following table.

Name	Remote Desktop client type
User1	Windows desktop
User2	Web

Users connect to Azure from the locations shown in the following table.

Name	Connection type
Location1	Site-to-Site VPN
Location2	Internet

For each of the following statements, select Yes if the statement is true. Otherwise, select No.

NOTE: Each correct selection is worth one point.

Answer Area

Statements	Yes	No
RDP Shortpath is used when User2 is in Location1 and connects to Host1.	<input type="radio"/>	<input type="radio"/>
RDP Shortpath is used when User1 is in Location1 and connects to Host2.	<input type="radio"/>	<input type="radio"/>
RDP Shortpath is used when User1 is in Location2 and connects to Host1.	<input type="radio"/>	<input type="radio"/>

- A. Mastered
 B. Not Mastered

Answer: A

Explanation:

Answer Area

Statements	Yes	No
RDP Shortpath is used when User2 is in Location1 and connects to Host1.	<input checked="" type="radio"/>	<input type="radio"/>
RDP Shortpath is used when User1 is in Location1 and connects to Host2.	<input type="radio"/>	<input checked="" type="radio"/>
RDP Shortpath is used when User1 is in Location2 and connects to Host1.	<input checked="" type="radio"/>	<input type="radio"/>

NEW QUESTION 65

HOTSPOT - (Topic 3)

You have an Azure subscription that contains a user named User1.

The subscription uses the Azure Virtual Desktop host pools shown in the following table.

Name	Type	Session host operating system	Number of hosts
Pool1	Pooled	Windows Server 2019 Datacenter	2
Pool2	Pooled	Windows 10 Enterprise multi-session	10
Pool3	Personal	Windows 11 Enterprise	10

You need to ensure that User1 can create RemoteApp app groups that will be used to stream a suite of custom apps from the host pools. The solution must meet the following requirements:

- The apps must be available to the users in all the pools.
- The principle of least privilege must be followed.
- Administrative effort must be minimized.

Which role should you assign to User1, and what is the minimum number of app groups that User1 should create? To answer, select the appropriate options in the answer area.

NOTE: Each correct selection is worth one point.

Answer Area

Role:

Desktop Virtualization Application Group Contributor
 Desktop Virtualization Contributor
 Desktop Virtualization Host Pool Contributor
 Desktop Virtualization Workplace Contributor

Number of app groups:

1
2
3
22

- A. Mastered
 B. Not Mastered

Answer: A

Explanation:

Answer Area

Role:

Desktop Virtualization Application Group Contributor
 Desktop Virtualization Contributor
 Desktop Virtualization Host Pool Contributor
 Desktop Virtualization Workplace Contributor

Number of app groups:

1
2
3
22

NEW QUESTION 67

- (Topic 3)

You have an Azure subscription that contains 500 users. The users are assigned Microsoft Office 365 E1 licenses. You deploy an Azure Virtual Desktop solution that contains Windows 10 multi-session hosts and streams a custom remote app named App1. You need to ensure that the users are licensed to stream App1. The solution must minimize costs. Which license should you use?

- A. Microsoft 365 E5
 B. Office 365 E3
 C. a Remote Desktop Services (RDS) client access license (CAL)
 D. Windows 10 Enterprise E3

Answer: D

Explanation:

<https://azure.microsoft.com/en-us/pricing/details/virtual-desktop/>

NEW QUESTION 72

HOTSPOT - (Topic 3)

You have an on-premises network. All users have computers that run Windows 10 Pro. You plan to deploy Azure Virtual Desktop to meet the department requirements shown in the following table.

Department	Requirement
Research	Run an application that can run only on Windows Server. The application will be published as a RemoteApp.
Finance	Run Windows 10 Enterprise multi-session.

You need to recommend licenses for the departments. The solution must minimize costs. Which license should you recommend for each department? To answer, select the

NOTE: Each correct selection is worth one point.

Research:

Microsoft 365 Enterprise E3 license
Windows 10 Enterprise E3 license
Windows Server client access license (CAL)
Windows Server Remote Desktop Services client access license (RDS CAL)

Finance:

Microsoft 365 Enterprise E3 license
Windows 10 Enterprise E3 license
Windows Server client access license (CAL)
Windows Server Remote Desktop Services client access license (RDS CAL)

- A. Mastered
 B. Not Mastered

Answer: A

Explanation:

Research:

Microsoft 365 Enterprise E3 license
Windows 10 Enterprise E3 license
Windows Server client access license (CAL)
Windows Server Remote Desktop Services client access license (RDS CAL)

Finance:

Microsoft 365 Enterprise E3 license
Windows 10 Enterprise E3 license
Windows Server client access license (CAL)
Windows Server Remote Desktop Services client access license (RDS CAL)

NEW QUESTION 75

DRAG DROP - (Topic 3)

You have an Azure Virtual Desktop host pool named Pool1.

You need to ensure that you can create an Azure NetApp Files volume that will host user profiles for Pool1.

Which four actions should you perform in sequence? To answer, move the appropriate actions from the list of actions to the answer area and arrange them in the correct order.

NOTE: More than one order of answer choices is correct. You will receive credit for any of the correct orders you select.

Actions

Answer Area

Register the NetApp Resource Provider.

Create an Azure NetApp Files account.

Create an Azure File Sync Storage Sync Service.

Register for Azure NetApp Files.

Create a capacity pool.

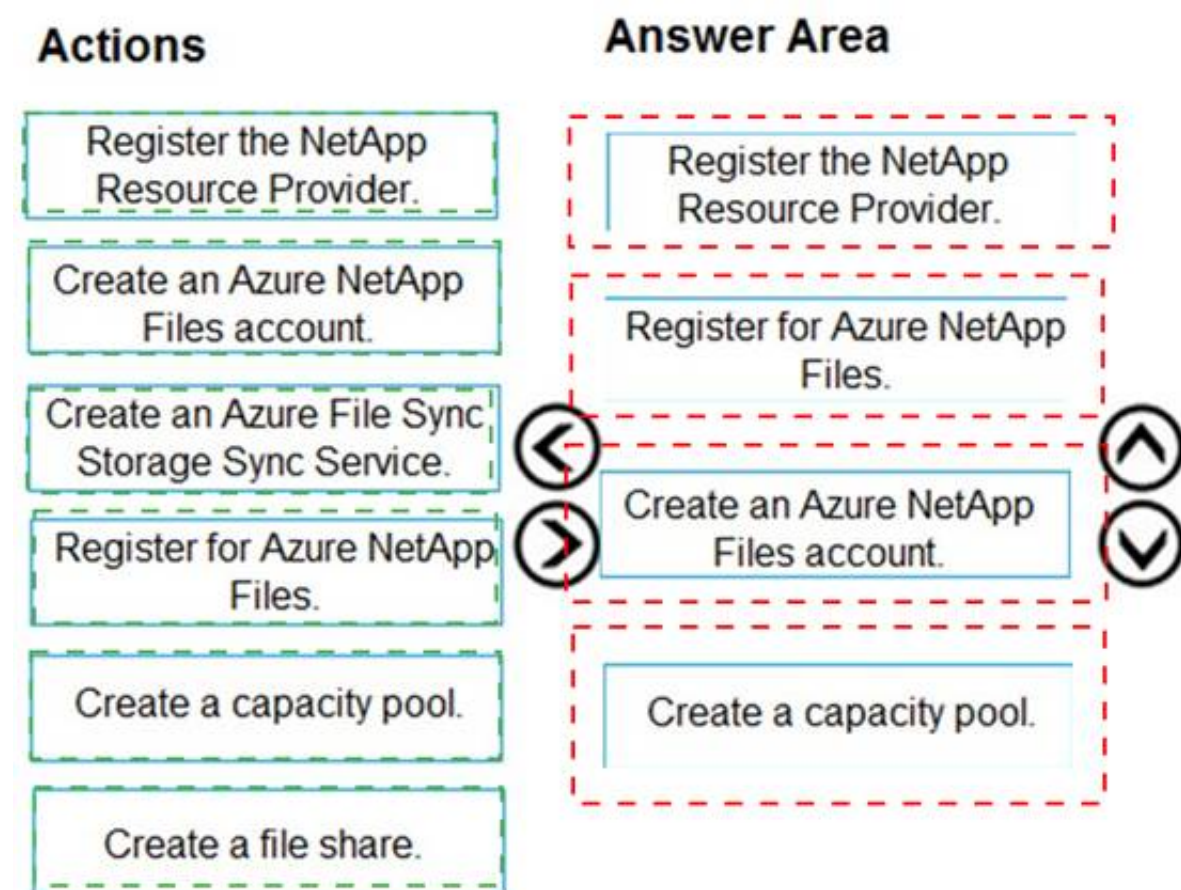
Create a file share.



- A. Mastered
 B. Not Mastered

Answer: A

Explanation:



NEW QUESTION 76

- (Topic 3)

You have an Azure Virtual Desktop host pool named Pool1. Pool1 contains session hosts that have a third-party application named App1. App1 is published by using a RemoteApp group.

A new MSI-based version of App1 is installed each month to each host. The name of the executable file is different for each version of App1.

You need to automate the process of making a new version of App1 available via RemoteApp. The process must ensure that the user experience remains the same when launching the application from the Windows Desktop client.

Which two cmdlets should you run? Each correct answer presents part of the solution.

NOTE: Each correct selection is worth one point.

- A. Remove-AzWvdApplication
- B. New-AzWvdApplicationGroup
- C. New-AzWvdMsixPackage
- D. New-AzRoleAssignment
- E. Remove-AzWvdMsixPackage

Answer: BD

Explanation:

Reference:

<https://docs.microsoft.com/en-us/azure/virtual-desktop/what-is-app-attach>

<https://docs.microsoft.com/en-us/powershell/module/az.desktopvirtualization/new-azwvdapplication?view=azps-6.4.0>

NEW QUESTION 77

- (Topic 3)

Note: This question is part of a series of questions that present the same scenario. Each question in the series contains a unique solution that might meet the stated goals. Some question sets might have more than one correct solution, while others might not have a correct solution.

After you answer a question in this section, you will NOT be able to return to it. As a result, these questions will not appear in the review screen.

You have the following:

- ? A Microsoft 365 E5 tenant
- ? An on-premises Active Directory domain
- ? A hybrid Azure Active Directory (Azure AD) tenant
- ? An Azure Active Directory Domain Services (Azure AD DS) managed domain
- ? An Azure Virtual Desktop deployment

The Azure Virtual Desktop deployment contains personal desktops that are hybrid joined to the on-premises domain and enrolled in Microsoft Intune.

You need to configure the security settings for the Microsoft Edge browsers on the personal desktops.

Solution: You configure a configuration profile in Intune. Does this meet the goal?

- A. Yes
- B. No

Answer: A

Explanation:

Reference:

<https://docs.microsoft.com/en-us/mem/intune/fundamentals/azure-virtual-desktop>

NEW QUESTION 79

- (Topic 3)

You have an Azure Virtual Desktop deployment.

The session hosts are joined to an on-premises Active Directory domain named contoso.com.

You need to limit user sessions to three hours. What should you configure?

- A. a Group Policy Object (GPO) in contoso.com.
- B. the properties of the workspace
- C. the RDP Properties of a host pool
- D. just-in-time (JIT) VM access

Answer: A

NEW QUESTION 82

DRAG DROP - (Topic 3)

You have an Azure Virtual Desktop deployment.

You plan to create the host pools shown in the following table.

Name	Session host requirement
HostPool1	Compute optimized with a high CPU-to-memory ratio
HostPool2	Memory optimized with a high memory-to-CPU ratio
HostPool3	GPU optimized for graphic rendering and video editing

You need to recommend the virtual machine size for each host pool to meet the session host requirements.

Virtual machine size

A-Series

B-Series

E-Series

F-Series

N-Series

Answer Area

HostPool1:

Virtual machine size

HostPool2:

Virtual machine size

HostPool3:

Virtual machine size

- A. Mastered
- B. Not Mastered

Answer: A

Explanation:

Virtual machine size

A-Series

B-Series

E-Series

F-Series

N-Series

Answer Area

HostPool1:

F-Series

HostPool2:

E-Series

HostPool3:

N-Series

NEW QUESTION 83

HOTSPOT - (Topic 3)

You network contains an on-premises Active Directory domain that syncs to an Azure Active Directory (Azure AD) tenant. The domain contains the users shown in the following table.

Name	Role	Member of
User1	Desktop Virtualization Workspace Reader	Group1
User2	Desktop Virtualization Application Group Reader	Group2

You have a Windows Virtual Desktop deployment that contains the application groups shown in the following table.

Name	Application	Assignment
AppGroup1	Microsoft Word	Group1
AppGroup2	Microsoft Excel	Group2
AppGroup3	Microsoft PowerPoint	Group1, Group2

You have the workspaces shown in the following table.

Name	Application group
Workspace1	AppGroup1
Workspace2	AppGroup2

For each of the following statements, select Yes if the statement is true. Otherwise, select No.
 NOTE: Each correct selection is worth one point.

Answer Area

Statements	Yes	No
User1 has PowerPoint listed in the Remote Desktop client.	<input type="radio"/>	<input type="radio"/>
User1 has Word listed in the Remote Desktop client.	<input type="radio"/>	<input type="radio"/>
User2 has PowerPoint listed in the Remote Desktop client.	<input type="radio"/>	<input type="radio"/>

- A. Mastered
- B. Not Mastered

Answer: A

Explanation:

Answer Area

Statements	Yes	No
User1 has PowerPoint listed in the Remote Desktop client.	<input type="radio"/>	<input checked="" type="radio"/>
User1 has Word listed in the Remote Desktop client.	<input checked="" type="radio"/>	<input type="radio"/>
User2 has PowerPoint listed in the Remote Desktop client.	<input type="radio"/>	<input checked="" type="radio"/>

NEW QUESTION 85

- (Topic 3)

You have the Azure Virtual Desktop deployment shown in the following table.

Configuration	Value
Azure region	West US
Number of currently deployed virtual machines	5
Virtual machine size	D8s_v3
Number of total regional vCPUs	80% (40 of 50)

You plan to deploy a new host pool as shown in the following table.

Configuration	Value
Azure region	West US
Number of session hosts	4
Virtual machine size	D8s_v3

You need to ensure that you can deploy the host pool. What should you do?

- A. Add a lock to the existing host pool.
- B. Change the proposed virtual machine size for the session hosts to D4s_v3.
- C. Stop and deallocate one of the currently deployed virtual machines.
- D. Submit a support request for service and subscription limits.

Answer: D

NEW QUESTION 90

- (Topic 3)

You have an Azure Virtual Desktop deployment.

You plan to use just-in-time (JIT) VM access to manage session host virtual machines. You need to recommend license requirements for JIT VM access. Your solution must minimize costs.

Which license should you recommend?

- A. Microsoft Defender for Servers Plan 2
- B. Microsoft 365 E5
- C. Enterprise Mobility + Security E5
- D. Microsoft Defender for Servers Plan 1

Answer: D

NEW QUESTION 93

- (Topic 3)

You have an Azure Virtual Desktop deployment. You have a RemoteApp named App1.

You discover that from the Save As dialog box of App1, users can run executable applications other than App1 on the session hosts.

You need to ensure that the users can run only published applications on the session hosts.

What should you do?

- A. Configure a conditional access policy in Azure Active Directory (Azure AD).
- B. Modify the Access control (1AM) settings of the host pool.
- C. Modify the RDP Properties of the host pool.
- D. Configure an AppLocker policy on the session hosts.

Answer: D

Explanation:

Reference:

<https://docs.microsoft.com/en-us/azure/virtual-desktop/security-guide>

NEW QUESTION 96

- (Topic 3)

Your company has 60,000 users.

You plan to deploy Azure Virtual Desktop.

You need to recommend a storage solution for the FSLogix profile containers. The solution must provide the highest possible IOPS and the lowest latency desktop experience

What should you recommend?

- A. Azure Files Standard
- B. Azure Data Lake Storage
- C. Azure Blob storage Premium
- D. Azure NetApp Files

Answer: D

Explanation:

Reference:

<https://docs.microsoft.com/en-us/azure/virtual-desktop/store-fslogix-profile>

NEW QUESTION 100

- (Topic 3)

You have an Azure Virtual Desktop host pool. The pool contains session hosts that run Windows 10 Enterprise multi-session.

You connect to a Remote Desktop session on Pool1 and discover an issue with the frequency of screen updates.

You need to identify whether the issue relates to insufficient server, network, or client resources. The solution must minimize how long it takes to identify the resource type.

What should you do?

- A. From within the current session, use the Azure Virtual Desktop Experience Estimator.
- B. From Azure Cloud Shell, run the `Get-AzOperationalInsightsWorkspaceUsage` cmdlet and specify the `DefaultProfile` parameter.
- C. From Azure Cloud Shell, run the `Get-AzWvdUserSession` cmdlet and specify the `UserSessionId` parameter.
- D. From within the current session, use Performance Monitor to display the values of all the RemoteFX Graphics(*)\Frames Skipped/Second counters.

Answer: D

Explanation:

Reference:

<https://docs.microsoft.com/en-us/azure/virtual-desktop/remotefx-graphics-performance-counters>

NEW QUESTION 101

- (Topic 3)

You have a hybrid Azure Active Directory (Azure AD) tenant.

You plan to deploy an Azure Virtual Desktop personal host pool. The host pool will contain 15 virtual machines that run Windows 10 Enterprise. The virtual machines will be joined to the on-premises Active Directory domain and used by the members of a domain group named `Department1`.

You need to ensure that each user is added automatically to the local Administrators group on the virtual machine to which the user signs in.

What should you configure?

- A. a role assignment for the host pool
- B. a role assignment for each virtual machine
- C. a policy preference in a Group Policy Object (GPO)
- D. a device setting in Azure AD

Answer: A

Explanation:

https://microsoftlearning.github.io/AZ-140-Configuring-and-Operating-Microsoft-Azure-Virtual-Desktop/Instructions/Labs/LAB_04L01_Implement_and_manage_AVD_profiles_AADDShtml

NEW QUESTION 105

- (Topic 3)

You deploy an Azure Virtual Desktop session host pool.

You need to provide a group of pilot users access to the virtual machines in the pool. What should you do?

- A. Create a role definition.
- B. Add the users to the local Administrators group on the virtual machines.
- C. Create a role assignment.

Answer: D

Explanation:

Reference:

<https://docs.microsoft.com/en-us/azure/virtual-desktop/delegated-access-virtual-desktop>

NEW QUESTION 109

- (Topic 3)

You have an Azure subscription.

You plan to deploy an Azure Virtual Desktop solution to the East US Azure region. The solution will contain the resources shown in the following table.

Type	Name	Description
Azure storage account	storage1	Contains a share named Profiles
Host pool	HostPool1	Stores user profiles in the Profiles share

You need to recommend a business continuity solution that meets the following requirements:

* Users must be able to connect to HostPool1 if a datacenter in the East US region fails.

* Costs must be minimized.

What should you include in the recommendation for each resource? To answer, select the appropriate options in the answer area.

NOTE: Each correct selection is worth one point.

Answer Area

HostPool1:

	▼
Availability zones	
Azure Backup	
Azure Site Recovery	
Azure Traffic Manager	

storage1:

	▼
Geo-redundant storage (GRS)	
Geo-zone-redundant storage (GZRS)	
Locally-redundant storage (LRS)	
Zone-redundant storage (ZRS)	

- A. Mastered
 B. Not Mastered

Answer: A

Explanation:

Answer Area

HostPool1:

	▼
Availability zones	
Azure Backup	
Azure Site Recovery	
Azure Traffic Manager	

storage1:

	▼
Geo-redundant storage (GRS)	
Geo-zone-redundant storage (GZRS)	
Locally-redundant storage (LRS)	
Zone-redundant storage (ZRS)	

NEW QUESTION 110

HOTSPOT - (Topic 3)

You have a hybrid Azure Active Directory (Azure AD) tenant named contoso.com that contains the users shown in the following table.

Name	Member of
User1	Group1
User2	Group2
User3	Group1, Group3

You have an Azure Virtual Desktop host pool. All the session hosts have a folder named C:\Folder1.
 You create an FSLogix Application Masking rule as shown in the following exhibit.

You create assignments for the Application Masking rule as shown in the following exhibit.

Assignment	Applies
Everyone	Yes
CONTOSO\Group1	No
CONTOSO\Group3	Yes
User2@contoso.com	No

For each of the following statements, select Yes if the statement is true. Otherwise, select No.
 NOTE: Each correct selection is worth one point.

Answer Area

Statements	Yes	No
User1 can see folder C:\Folder1 on a session host.	<input type="radio"/>	<input type="radio"/>
User2 can see folder C:\Folder1 on a session host.	<input type="radio"/>	<input type="radio"/>
User3 can see folder C:\Folder1 on a session host.	<input type="radio"/>	<input type="radio"/>

- A. Mastered
- B. Not Mastered

Answer: A

Explanation:

Graphical user interface, text Description automatically generated

References:

<https://docs.microsoft.com/en-us/fslogix/application-masking-rules-ht> <https://docs.microsoft.com/en-us/fslogix/application-masking-users-groups-ht>

NEW QUESTION 114

- (Topic 3)

You have a Windows Virtual Desktop host pool that contains two session hosts. The Microsoft Teams client is installed on each session host. You discover that only the Microsoft Teams chat and collaboration features work. The calling and meeting features are disabled. You need to ensure that users can set the calling and meeting features from within Microsoft Teams. What should you do?

- A. Install the Remote Desktop WebRTC Redirector Service.
- B. Configure Remote audio mode in the RDP Properties.
- C. Install the Teams Meeting add-in for Outlook.
- D. Configure audio input redirection.

Answer: A

Explanation:

Reference:

<https://docs.microsoft.com/en-us/azure/virtual-desktop/teams-on-wvd>

NEW QUESTION 119

- (Topic 3)

You have an Azure Active Directory (Azure AD) tenant named contoso.com and an Azure virtual network named VNET1.

To VNET1, you deploy an Azure Active Directory Domain Services (Azure AD DS) managed domain named litwareinc.com.

To VNET1, you plan to deploy a Windows Virtual Desktop host pool named Pool1. You need to ensure that you can deploy Windows 10 Enterprise host pools to Pool1. What should you do first?

- A. Modify the settings of the litwareinc.com DNS zone.
- B. Modify the DNS settings of VNET1.
- C. Add a custom domain name to contoso.com.
- D. Implement Azure AD Connect cloud sync.

Answer: A

Explanation:

Reference:

<https://docs.microsoft.com/en-us/azure/active-directory-domain-services/tutorial-create-instance>

"Update DNS settings for the Azure virtual network With Azure AD DS successfully deployed, now configure the virtual network to allow other connected VMs and applications to use the managed domain. To provide this connectivity, update the DNS server settings for your virtual network to point to the two IP addresses where the managed domain is deployed."

NEW QUESTION 124

- (Topic 3)

You have an Azure Active Directory (Azure AD) tenant named contoso.com.

You use a user account named Admin1 to deploy an Azure Active Directory Domain Services (Azure AD DS) managed domain named aaddscontoso.com to a virtual network named VNET1.

You plan to deploy an Azure Virtual Desktop host pool named Pool1 to VNET1.

You need to ensure that you can use the Admin1 user account to deploy Windows 10 Enterprise session hosts to Pool1.

What should you do first?

- A. Add Admin1 to the AA Change Host pool type to Pooled and specify Load D DC
- B. Assign the Cloud device administrator role to Admin1.
- C. Assign a Microsoft 365 Enterprise E3 license to Admin1.
- D. Change the password of Admin1.

Answer: A

Explanation:

Reference:

<https://docs.microsoft.com/en-us/azure/virtual-desktop/create-host-pools-azure-marketplace?tabs=azure-portal>

NEW QUESTION 125

HOTSPOT - (Topic 3)

Your company has the offices shown in the following table.

Location	Internal network IP address space	Public IP address space
Boston	10.10.0.0/16	13.83.131.0/24
Seattle	172.16.0.0/16	92.15.10.0/24

The company has an Azure Active Directory (Azure AD) tenant named contoso.com that contains a user named User1.

Users connect to a Windows Virtual Desktop deployment named WVD1. WVD1 contains session hosts that have public IP addresses from the 52.166.253.0/24 subnet.

Contoso.com has a conditional access policy that has the following settings:

? Name: Policy1

? Assignments:

Access controls:

? Grant: Grant access, Require multi-factor authentication Enable policy: On

For each of the following statements, select Yes if the statement is true. Otherwise, select

NOTE: Each correct selection is worth one point.

Statements	Yes	No
If User1 connects to Windows Virtual Desktop from the office in Boston, User1 is prompted for multi-factor authentication (MFA).	<input type="radio"/>	<input type="radio"/>
If User1 connects to Windows Virtual Desktop from home, User1 is prompted for multi-factor authentication (MFA).	<input type="radio"/>	<input type="radio"/>
If User1 connects to Microsoft Exchange Online from a Windows Virtual Desktop session, User1 is prompted for multi-factor authentication (MFA).	<input type="radio"/>	<input type="radio"/>

- A. Mastered
- B. Not Mastered

Answer: A

Explanation:

Statements	Yes	No
If User1 connects to Windows Virtual Desktop from the office in Boston, User1 is prompted for multi-factor authentication (MFA).	<input checked="" type="radio"/>	<input type="radio"/>
If User1 connects to Windows Virtual Desktop from home, User1 is prompted for multi-factor authentication (MFA).	<input checked="" type="radio"/>	<input type="radio"/>
If User1 connects to Microsoft Exchange Online from a Windows Virtual Desktop session, User1 is prompted for multi-factor authentication (MFA).	<input checked="" type="radio"/>	<input type="radio"/>

NEW QUESTION 127

DRAG DROP - (Topic 3)

You have an Azure subscription that contains the storage accounts shown in the following table.

Name	Performance	Type
storage1	Standard	General purpose v2
storage2	Premium	BlockBlobStorage
storage3	Premium	Page blobs
storage4	Premium	FileStorage

You have a custom generalized Windows 10 image.
You plan to deploy an Azure Virtual Desktop host pool that will use the custom image and FSLogix profile containers.
You need to recommend which storage accounts to use for the custom image and the profile containers. The solution must meet the following requirements:
? Minimize costs to store the image.
? Maximize performance of the profile containers.
Which account should you recommend for each type of content? To answer, drag the appropriate accounts to the correct content type. Each account may be used once, more than once, or not at all. You may need to drag the split bar between panes or scroll to view content.
NOTE: Each correct selection is worth one point.

Accounts

storage1

storage2

storage3

storage4

Answer Area

Custom image:

Profile containers:

- A. Mastered
- B. Not Mastered

Answer: A

Explanation:

Accounts

Answer Area

storage1

storage2

storage3

storage4

Custom image:

storage2

Profile containers:

storage4

NEW QUESTION 132

HOTSPOT - (Topic 3)

You have a Windows Virtual Desktop deployment.

You need to ensure that all the connections to the managed resources in the host pool require multi-factor authentication (MFA).

Which two settings should you modify in a conditional access policy? To answer, select the appropriate options in the answer area.

NOTE: Each correct selection is worth one point.

New

Conditional access policy

Control user access based on conditional access policy to bring signals together, to make decisions, and enforce organizational policies. [Learn more](#)

Name *

Conditional Access Policy



Assignments

Users and groups ⓘ

All users



Cloud apps or actions ⓘ

No cloud apps or actions selected



Conditions ⓘ

0 conditions selected



Access controls

Grant ⓘ

0 conditions selected



Session ⓘ

0 conditions selected



- A. Mastered
- B. Not Mastered

Answer: A

Explanation:

New

Conditional access policy

Control user access based on conditional access policy to bring signals together, to make decisions, and enforce organizational policies. [Learn more](#)

Name *

Conditional Access Policy ✓

Assignments

<p>Users and groups ⓘ</p> <p>All users</p>	>
<p>Cloud apps or actions ⓘ</p> <p>No cloud apps or actions selected</p>	>
<p>Conditions ⓘ</p> <p>0 conditions selected</p>	>

Access controls

<p>Grant ⓘ</p> <p>0 conditions selected</p>	>
<p>Session ⓘ</p> <p>0 conditions selected</p>	>

NEW QUESTION 133

- (Topic 3)

You have an Azure Virtual Desktop deployment.

You need to monitor the deployment by using the Azure Virtual Desktop Insights solution in Azure Monitor.

What should you use as the Diagnostic settings destination for the host pool?

- A. Event hub
- B. Log Analytics workspace
- C. Storage account

Answer: B

NEW QUESTION 135

- (Topic 3)

You have a Windows Virtual Desktop host pool named Pool1 and an Azure Storage account named Storage1.

Storage1 stores FSLogix profile containers in a share folder named share1.

You create a new group named Group1. You provide Group1 with permission to sign in to Pool1.

You need to ensure that the members of Group1 can store the FSLogix profile containers in share1. The solution must use the principle of least privilege.

Which two privileges should you assign to Group1? Each correct answer presents part of the solution.

NOTE: Each correct selection is worth one point.

- A. the Storage Blob Data Contributor role for storage1
- B. the List folder / read data NTFS permissions for share1
- C. the Modify NTFS permissions for share1
- D. the Storage File Data SMB Share Reader role for storage1
- E. the Storage File Data SMB Share Elevated Contributor role for storage1
- F. the Storage File Data SMB Share Contributor role for storage1

Answer: CF

Explanation:

Reference:

<https://docs.microsoft.com/en-us/azure/virtual-desktop/create-file-share>

NEW QUESTION 140

- (Topic 3)

You have a Azure Virtual Desktop deployment that contains multiple host pools.

You need to create a PowerShell script to sign users out of a specific session host before you perform a maintenance task.

Which PowerShell module should you load in the script?

- A. Az.Automation
- B. Az.COMputC
- C. Az.Maintenance
- D. Az.DektopVirtualization

Answer: D

Explanation:

Reference:

<https://docs.microsoft.com/en-us/powershell/module/az.desktopvirtualization/?view=azps-6.6.0#desktopvirtualization>

<https://techgenix.com/logging-off-and-removing-wvd-user-sessions/>

NEW QUESTION 145

HOTSPOT - (Topic 3)

You have an Azure Virtual Desktop deployment that contains a host pool named Pool1. Pool1 contains two session hosts. Pool1 is configured as shown in the following exhibit.

Use the drop-down menus to select the answer choice that completes each statement based on the information presented in the graphic.

NOTE- Each correct selection is worth one point.

Name
Pool1

Configuration
Personal desktop

Start VM on connect ☒ No ☐ Yes

Validation environment ☒ No ☐ Yes

Friendly name

Description

Load balancing algorithm

Max session limit

Service updates will be applied to Pool1 [answer choice].

once every 30 days
as soon as the updates are released
once every 30 days
once the updates are generally available

New user connections will be [answer choice].

connected to the session host that has the highest number of existing connections and has not reached the maximum session limit
connected to the session host that has the highest number of existing connections and has not reached the maximum session limit
evenly distributed across all available hosts
rejected once five sessions are established

- A. Mastered
- B. Not Mastered

Answer: A

Explanation:

Service updates will be applied to Pool1 [answer choice].

once every 30 days
as soon as the updates are released
once every 30 days
once the updates are generally available

New user connections will be [answer choice].

connected to the session host that has the highest number of existing connections and has not reached the maximum session limit
connected to the session host that has the highest number of existing connections and has not reached the maximum session limit
evenly distributed across all available hosts
rejected once five sessions are established

NEW QUESTION 146

- (Topic 3)

You have an Azure Virtual Desktop deployment that contains the resources shown in the following table.

Name	Description
Pool1	Pooled host pool
Host1	<ul style="list-style-type: none"> Windows 11 session host in Pool1 Has a system-assigned managed identity enabled Has a user-assigned managed identity named Managed1 enabled

You plan to enable Start VM on connect for Pool1.

You create a custom Azure role named Role1 that has sufficient permissions to start virtual machines on demand.

You need to ensure that the session hosts in Pool1 can start on demand. To which service principal should you assign Role1?

- A. Managed1
- B. Azure Virtual Desktop
- C. Azure Automation
- D. Azure Compute

Answer: B

NEW QUESTION 150

- (Topic 3)

You have an Azure subscription that contains the resources shown in the following table.

Name	Description
WVDVM-0	A virtual machine used in a pooled virtual machine set
share1	An Azure file share that stores FSLogix profile containers
Image1	A custom Windows 10 image in a shared image gallery
Image2	A custom Windows Server 2019 image stored in Azure Blob storage

Which resources can you back up by using Azure Backup?

- A. WVDVM-0 and share1 only
- B. WVDVM-0 only
- C. WVDVM-0, Image1, and Image2 only
- D. WVDVM-0, share1, and Image1 only
- E. WVDVM-0, share1, Image1, and Image2

Answer: A

Explanation:

Reference:

<https://docs.microsoft.com/en-us/azure/backup/backup-afs> <https://docs.microsoft.com/en-us/azure/backup/backup-azure-vms-introduction>

NEW QUESTION 154

- (Topic 2)

You need to recommend an authentication solution that meets the performance requirements.

Which two actions should you include in the recommendation? Each correct answer presents part of the solution.

NOTE: Each correct selection is worth one point.

- A. Join all the session hosts to Azure AD.
- B. In each Azure region that will contain the Windows Virtual Desktop session hosts, create an Azure Active Directory Domain Service (Azure AD DS) managed domain.
- C. Deploy domain controllers for the on-premises Active Directory domain on Azure virtual machines.
- D. Deploy read-only domain controllers (RODCs) on Azure virtual machines.
- E. In each Azure region that will contain the Windows Virtual Desktop session hosts, create an Active Directory site.

Answer: AC

Explanation:

<https://www.compete366.com/blog-posts/how-to-implement-azure-windows-virtual-desktop- wvd/>

<https://docs.microsoft.com/en-us/azure/virtual-desktop/create-host-pools-azure-marketplace>

NEW QUESTION 158

HOTSPOT - (Topic 2)

You need to configure a conditional access policy to meet the authentication requirements.

What should you include in the policy configuration? To answer, select the appropriate options in the answer area.

NOTE Each correct selection is worth one point.

Answer Area

Set Cloud apps or actions to include:

Azure Virtual Desktop
 Azure Virtual Desktop Azure Resource Manager Provider
 Azure Virtual Desktop Client

Set Session controls to include:

Persistent browser session
 Sign-in frequency
 Use app enforced restrictions

- A. Mastered
- B. Not Mastered

Answer: A

Explanation:

Answer Area

Set Cloud apps or actions to include:

Azure Virtual Desktop
 Azure Virtual Desktop Azure Resource Manager Provider
 Azure Virtual Desktop Client

Set Session controls to include:

Persistent browser session
 Sign-in frequency
 Use app enforced restrictions

NEW QUESTION 163

- (Topic 2)

You need to ensure the resiliency of the user profiles for the Boston office users. The solution must meet the user performance requirements. What should you do?

- A. Modify the Account kind setting of storage1.
- B. Modify the replication settings of storage1.
- C. Implement Azure Site Recovery.
- D. Configure Cloud Cache.

Answer: D

Explanation:

Reference:

<https://docs.microsoft.com/en-us/azure/architecture/example-scenario/wvd/windows-virtual-desktop-fslogix>

NEW QUESTION 164

- (Topic 1)

You need to configure the virtual machines that have the Pool1 prefix. The solution must meet the technical requirements. What should you use?

- A. a Windows Virtual Desktop automation task
- B. Virtual machine auto-shutdown
- C. Service Health in Azure Monitor
- D. Azure Automation

Answer: A

Explanation:

Reference:

<https://docs.microsoft.com/en-us/azure/logic-apps/create-automation-tasks-azure-resources>

NEW QUESTION 167

- (Topic 2)

You need to deploy the session hosts to meet the deployment requirements Which PowerShell cmdlet should you run first?

- A. New-AzwvdRegistratratiinfo
- B. Get-AzApiManagementSsoToken
- C. Set-AzWMADDomainExtension
- D. Update-AZwvdSessionHost

Answer: C

Explanation:

Reference:

<https://rozemuller.com/avd-automation-cocktail-avd-automated-with-powershell/>

NEW QUESTION 171

- (Topic 1)

Which setting should you modify for VNET4 before you can deploy Pool4?

- A. Service endpoints
- B. Address space
- C. DNS servers
- D. Access control (1AM)
- E. Peerings

Answer: C

Explanation:
DNS should be configured to use an Active Directory Domain Controller.

NEW QUESTION 175

DRAG DROP - (Topic 1)

You need to evaluate the RDS deployment in the Seattle office. The solution must meet the technical requirements.
Which three actions should you perform in sequence? To answer, move the appropriate actions from the list of actions to the answer area and arrange them in the correct order.

Actions

Create a project in Azure Migrate.

Register the Lakeside tool with Azure Migrate.

Add the Azure Advisor recommendation digest.

Install agents on the virtual machines that have the Pool3 prefix.

Install agents on the virtual machines that have the Pool2 prefix.

Create a Recovery Service vault.

Answer Area

⬅️

➡️

⬆️

⬆️

- A. Mastered
- B. Not Mastered

Answer: A

Explanation:

Actions

Create a project in Azure Migrate.

Register the Lakeside tool with Azure Migrate.

Add the Azure Advisor recommendation digest.

Install agents on the virtual machines that have the Pool3 prefix.

Install agents on the virtual machines that have the Pool2 prefix.

Create a Recovery Service vault.

Answer Area

Create a project in Azure Migrate.

Register the Lakeside tool with Azure Migrate.

Install agents on the virtual machines that have the Pool2 prefix.

NEW QUESTION 177

- (Topic 1)

You need to configure the device redirection settings. The solution must meet the technical requirements.
Where should you configure the settings?

- A. Workspace1
- B. MontrealUsers
- C. Group1
- D. Pool1

Answer: D

NEW QUESTION 182

- (Topic 1)

Which role should you assign to Operator2 to meet the technical requirements?

- A. Desktop Virtualization Session Host Operator
- B. Desktop Virtualization Host Pool Contributor
- C. Desktop Virtualization User Session Operator
- D. Desktop Virtualization Contributor

Answer: D

Explanation:

Reference:

<https://docs.microsoft.com/en-us/azure/virtual-desktop/rbac>

NEW QUESTION 185

- (Topic 3)

You have a Windows Virtual Desktop deployment. You publish a RemoteApp named AppVersion1.

You need AppVersion1 to appear in the Remote Desktop client as Sales Contact Application.

Which PowerShell cmdlet should you use?

- A. New-AzADApplication
- B. Update-AzWvdApplicationGroup
- C. Register-AzWvdApplicationGroup
- D. Update-AzWvdApplication

Answer: D

Explanation:

Reference:

<https://docs.microsoft.com/en-us/azure/virtual-desktop/customize-feed-for-virtual-desktop- users>

<https://docs.microsoft.com/en-us/powershell/module/az.desktopvirtualization/update-azwvdapplication?view=azps-5.7.0>

NEW QUESTION 188

- (Topic 3)

You have an Azure Virtual Desktop deployment that contains a host pool. The host pool ephemeral disks.

You need to deploy Microsoft OneDrive for Business.

Which two actions should you perform for each session host? Each correct answer presents part of the solution.

NOTE: Each correct selection is worth one point.

- A. Install FSLogix.
- B. Install the OneDrive sync app by using the per-machine installation option.
- C. Implement Application Masking.
- D. Install the OneDrive sync app by using the per-user installation option.
- E. Deploy an MSIX app attach package.

Answer: AB

Explanation:

The two actions you should perform for each session host in order to deploy Microsoft OneDrive for Business are:

* A. Install FSLogix - FSLogix provides a single-user solution for running multiple OneDrive for Business clients simultaneously on the same session host.

* B. Install the OneDrive sync app by using the per-machine installation option - according to the Microsoft AZ-140 Official Guide, "OneDrive for Business supports per-machine installation, which is required for a multi-user VDI environment." This means that the OneDrive sync app must be installed on each session host using the per-machine installation option.

NEW QUESTION 191

- (Topic 3)

Your company has a main office and two branch offices. Each office connects directly to the internet. The router in each branch office is configured as an endpoint for the following VPNs:

? A VPN connection to the main office

? A site-to-site VPN to Azure

The routers in each branch office have the Quality of Service (QoS) rules shown in the following table.

Users in the branch office report slow responses and connection errors when they attempt to connect to Windows Virtual Desktop resources.

You need to modify the QoS rules on the branch office routers to improve Windows Virtual Desktop performance.

For which rule should you increase the bandwidth allocation?

- A. Rule2
- B. Rule3
- C. Rule4
- D. Rule1

Answer: B

Explanation:

<https://docs.microsoft.com/en-us/azure/virtual-desktop/safe-url-list>

Any Remote Desktop clients you use must have access to the following URLs: Remote Desktop clients

Address Outbound TCP port

*.wvd.microsoft.com 443

*.servicebus.windows.net 443

go.microsoft.com 443

aka.ms 443

docs.microsoft.com 443

privacy.microsoft.com 443

query.prod.cms.rt.microsoft.com 443

NEW QUESTION 195

- (Topic 3)

You have a Windows Virtual Desktop host pool named Pool1 that runs Windows 10 Enterprise multi-session hosts.

You need to use Performance Monitor to troubleshoot a low frame quality issue that is affecting a current use session to Pool1.

What should you run to retrieve the user session ID?

- A. Get-ComputerInfo
- B. qwinsta
- C. whoami
- D. Get-LocalUser

Answer: B

Explanation:

Reference:

<https://docs.microsoft.com/en-us/azure/virtual-desktop/troubleshoot-vm-configuration>

NEW QUESTION 197

HOTSPOT - (Topic 3)

You have an Azure subscription named Subscription1 that contains the users shown in the following table.

Name	Member of
User1	Group1, Group3
User2	Group2, Group3

Subscription1 contains the Azure Virtual Desktop host pools shown in the following table.

Name	Session host in host pool	Session host public inbound ports
Pool1	P1-0.contoso.com	None
Pool2	P2-0.contoso.com	None

Subscription1 contains the Azure Virtual Desktop application groups shown in the following table.

Name	Host pool	Application group type
AppGroup1	Pool1	Desktop
AppGroup2	Pool2	Desktop

You perform the role assignments shown in the following table.

Role	To group	For resource
Desktop Virtualization Reader	Group3	Subscription1
Desktop Virtualization User Session Operator	Group1	Pool1
Desktop Virtualization User	Group3	AppGroup2
Virtual Machine User Login	Group1	P1-0.contoso.com

For each of the following statements, select Yes if the statement is true. Otherwise, select

NOTE: Each correct selection is worth one point. Hot Area:

User1 can connect to the P1-0.contoso.com session host.

☐
☐

User2 can connect to the P1-0.contoso.com session host.

☐
☐

User2 can connect to the P2-0.contoso.com session host.

☐
☐

- A. Mastered
- B. Not Mastered

Answer: A

Explanation:

Yes, No, Yes

NEW QUESTION 198

- (Topic 3)

Note: This question is part of a series of questions that present the same scenario. Each question in the series contains a unique solution that might meet the stated goals. Some question sets might have more than one correct solution, while others might not have a correct solution.

After you answer a question in this section, you will NOT be able to return to it. As a result, these questions will not appear in the review screen.

You have an Azure Virtual Desktop host pool that runs Windows 10 Enterprise multi-session.

User sessions are load-balanced between the session hosts. Idle session timeout is 30 minutes.

You plan to shut down a session host named Host1 to perform routine maintenance. You need to prevent new user sessions to Host1 without disconnecting active user

sessions.

Solution: From the properties of the virtual machine of Host1, you enable just-in-time (JIT) VM access.

Does this meet the goal?

A. Yes

B. No

Answer: B

Explanation:

Reference:

<https://docs.microsoft.com/en-us/azure/virtual-desktop/drain-mode>

NEW QUESTION 201

- (Topic 3)

Note: This question is part of a series of questions that present the same scenario. Each question in the series contains a unique solution that might meet the stated goals. Some question sets might have more than one correct solution, while others might not have a correct solution.

After you answer a question in this section, you will NOT be able to return to it. As a result, these questions will not appear in the review screen.

You have a Windows Virtual Desktop host pool that contains five session hosts. The session hosts run Windows 10 Enterprise multi-session.

You need to prevent users from accessing the internet from Windows Virtual Desktop sessions. The session hosts must be allowed to access all the required Microsoft services.

Solution: You configure rules in the network security group (NSG) linked to the subnet of the session hosts.

Does that meet the goal?

A. Yes

B. No

Answer: A

Explanation:

Reference:

<https://docs.microsoft.com/en-us/azure/virtual-network/tutorial-filter-network-traffic>

NEW QUESTION 203

- (Topic 3)

Your network contains an on-premises Active Directory domain that syncs to an Azure Active Directory (Azure AD) tenant. The domain contains the domain controllers shown in the following table.

Name	Network location	IP address	Configuration
Server1	On-premises datacenter	10.10.1.1	Domain controller, DNS server
Server2	Azure virtual network named VNET1	10.20.1.1	Domain controller, DNS server

The DNS servers are configured to forward requests to an external DNS service.

You create a new virtual network named VNET2 that is peered to VNET1 and has gateway transit enabled.

You plan to implement an Azure Virtual Desktop host pool in VNET2. The session hosts will be joined to the Active Directory domain.

You need to configure DNS to meet the following requirements:

? Ensure that Azure Virtual Desktop users can resolve on-premises servers and Azure resources.

? Ensure that azure Virtual Desktop remains operational if a DNS server fails.

? Minimize administrative effort.

What should you configure?

A. the DNS settings of VNET2 to use Server2 and Served

B. the DNS settings of VNET2 to use the Azure DNS service

C. the DNS settings of the virtual machines to use Server2 and Server1

D. the DNS settings of the virtual machines to use the Azure DNS service

Answer: C

Explanation:

Reference:

<https://docs.microsoft.com/en-us/azure/virtual-network/virtual-networks-name-resolution-for-vms-and-role-instances#name-resolution-that-uses-your-own-dns-server>

NEW QUESTION 204

- (Topic 3)

You have a Azure Virtual Desktop deployment that uses Microsoft 355 cloud services including Microsoft Teams.

Users use the Remote Desktop client to connect to the deployment from computers that run Windows 10

You need to support audio and video in Azure Virtual Desktop and provide the users with access to Microsoft Teams calling and meeting features.

Which three actions should you perform? Each correct answer presents part of the solution.

NOTE: Each correct selection is worth one point.

- A. Install the Microsoft Teams WebSocket Service on the Windows 10 computers
- B. Configure the IsVWDEnvironment registry key on the Windows 10 computers
- C. Configure the isWVDEnvironment registry key on the virtual machines
- D. Install the Microsoft Teams desktop app on the Windows 10 computers
- E. Install the Microsoft Teams WebSocket Service on the virtual machines
- F. Install the Microsoft Teams desktop app on the virtual machines

Answer: BDE

Explanation:

Reference:

<https://docs.microsoft.com/en-us/azure/virtual-desktop/teams-on-avd>

NEW QUESTION 209

- (Topic 3)

Your network contains an on-premises Active Directory domain and a Windows Virtual Desktop deployment.

The computer accounts for all the session hosts are in an organizational unit (OU) named WVDHostsOU. All user accounts are in an OU named CorpUsers.

A domain administrator creates a Group Policy Object (GPO) named Policy1 that only contains user settings.

The administrator links Policy1 to WVDHostsOU.

You discover that when users sign in to the session hosts, none of the settings from Policy1 are applied.

What should you configure to apply GPO settings to the users when they sign in to the session hosts?

- A. loopback processing
- B. FSLogix profiles
- C. mandatory Roaming User Profiles
- D. restricted groups

Answer: A

Explanation:

Reference:

<https://www.linkedin.com/pulse/windows-virtual-desktop-remoteapps-jason-byway>

NEW QUESTION 210

- (Topic 3)

You have an Azure Virtual Desktop deployment.

You need to recommend a solution to run containerized applications without installing the

What should you include in the recommendation?

- A. EXE applications
- B. MSI packages
- C. APPX app packages
- D. MSIX app packages

Answer: D

Explanation:

Reference:

<https://docs.microsoft.com/en-us/windows/msix/msix-container>

NEW QUESTION 212

- (Topic 3)

You have an Azure Virtual Desktop deployment that contains an Azure compute gallery. The Azure compute gallery contains an image definition named

Definitions Definition1 contains the following image versions:

* 1.0.0

* 1.1.0

* 1.2.0

You need to ensure that when a virtual machine is created from the Azure compute gallery, the 1.1.0 image version is used by default.

What should you do?

- A. Select Exclude from latest for image version 1.0.0.
- B. Select Exclude from latest for image version 1.2.0. Most Voted
- C. Apply a lock to image version 1.1.0.
- D. Apply a tag named default to image version 1.1.0.

Answer: B

Explanation:

Exclude from latest. You can keep a version from being used as the latest image version. <https://learn.microsoft.com/en-us/azure/virtual-machines/shared-image-galleries?tabs=azure-cli>

NEW QUESTION 215

HOTSPOT - (Topic 3)

You have an Azure subscription that contains the resources shown in the following table.

You have a virtual machine named Server1 that runs Windows Server and is connected to VNet3.

You need to deploy the Azure Virtual Desktop host pools shown in the following table. The solution must meet the following requirements:

- The session hosts in Pool1 must access Server1 via the Microsoft backbone network.
- The session hosts in Pool2 must access storage1 via the Microsoft backbone network. What should you configure on the virtual networks? To answer, select the appropriate options in the answer area.

NOTE: Each correct selection is worth one point.

Answer Area

VNet1:

VNet2:

- A. Mastered
B. Not Mastered

Answer: A

Explanation:

Answer Area

VNet1:

VNet2:

NEW QUESTION 218

- (Topic 3)

You have an Azure Virtual Desktop deployment.

You deploy and configure Azure Virtual Desktop in a secondary location.

You plan to perform a test failover to the secondary location, but discover existing user sessions to the primary location.

You need to sign out users from the session hosts in the primary location. Which PowerShell cmdlet should you run?

- A. Invoke-RdsUserSessionLogoff
B. Remove-AzWvdUserSession
C. Invoke-RestMethod
D. Remove-Alias

Answer: B

Explanation:

Reference:

<https://docs.microsoft.com/en-us/azure/virtual-desktop/disaster-recovery>

NEW QUESTION 223

- (Topic 3)

You have a Azure Virtual Desktop deployment.

You plan to implement the Start/Stop VMs during off-hours feature.

You need to ensure that you can stop the session hosts automatically based on the CPU utilization.

What should you do on the session hosts?

- A. Enable change tracking.
B. Configure the Power Management settings.
C. Configure the Diagnostic settings.
D. Install the Azure Virtual Desktop Agent

Answer: C

Explanation:

Reference:
<https://docs.microsoft.com/en-us/azure/virtual-desktop/azure-monitor>

NEW QUESTION 228

- (Topic 3)

You have an Azure Virtual Desktop host pool named HostPool1. HostPool1 contains Windows 10 session hosts and the application groups shown in the following table.

Name	Type
Appgroup1	Desktop
Appgroup2	RemoteApp
Appgroup3	RemoteApp

You need to assign an instance of a Windows 11 Desktop application group to users. What should you do first?

- A. Create a scaling plan.
- B. Create a new workspace.
- C. Add a session host to HostPool1.
- D. Create a new host pool

Answer: D

Explanation:

The current hostpool has Windows 10 hosts, If you add an Windows 11 host in the current hostpool you cant force a desktop to use Windows 11. If you want to use Windows 11, ether delete the current session hosts and add Windows 11 Hosts. or create a new Hostpool.

NEW QUESTION 229

HOTSPOT - (Topic 3)

You have an Azure Virtual Desktop deployment that contains two users named User1 and User2 and the storage accounts shown in the following table.

Name	Role
storage1	Storage File Data SMB Share Contributor assigned to User1 Storage File Data SMB Share Elevated Contributor assigned to User2
storage2	Storage File Data SMB Share Contributor assigned to User1 Owner assigned to User2

The File share settings for storage1 are configured as shown in the following exhibit.

+ File share
Refresh

File share settings

Active Directory: Configured
Soft delete: 7 days
Share capacity: 5 TiB

Search file shares by prefix (case-sensitive)
Show deleted shares

Name	Modified			
share1	10/9/2021, 4:30:53 AM	Transaction optimized	5TiB	...
share2	10/9/2021, 4:34:05 AM	Hot	5TiB	...
share3	10/9/2021, 4:34:29 AM	Cool	5TiB	...

The File share settings for storage2 are configured as shown in the following exhibit.

+ File share
Refresh

File share settings

Active Directory: Not configured
Soft delete: 7 days
Share capacity: 5 TiB

Search file shares by prefix (case-sensitive)
Show deleted shares

Name	Modified			
share4	10/9/2021, 4:45:20 AM	Transaction optimized	5TiB	...

For each of the following statements, select Yes if the statement is true. Otherwise, select No.

NOTE: Each correct selection is worth one point. Hot Area:

Answer Area

Statements	Yes	No
User1 can access share1 by using Windows credentials.	<input type="radio"/>	<input type="radio"/>
User2 can access share4 by using Windows credentials.	<input type="radio"/>	<input type="radio"/>
User2 can enable SMB Multichannel for storage2.	<input type="radio"/>	<input type="radio"/>

- A. Mastered
- B. Not Mastered

Answer: A

Explanation:

YES, Yes , Yes

<https://docs.microsoft.com/en-us/azure/storage/files/storage-files-identity-ad-ds-assign-permissions?tabs=azure-portal> "Once you've enabled Active Directory Domain Services (AD DS) authentication on your storage account, you must configure share-level permissions in order to get access to your file shares. There are two ways you can assign share-level permissions. You can assign them to specific Azure AD users/user groups and you can assign them to all authenticated identities as a default share level permission."

NEW QUESTION 232

.....

THANKS FOR TRYING THE DEMO OF OUR PRODUCT

Visit Our Site to Purchase the Full Set of Actual AZ-140 Exam Questions With Answers.

We Also Provide Practice Exam Software That Simulates Real Exam Environment And Has Many Self-Assessment Features. Order the AZ-140 Product From:

<https://www.2passeasy.com/dumps/AZ-140/>

Money Back Guarantee

AZ-140 Practice Exam Features:

- * AZ-140 Questions and Answers Updated Frequently
- * AZ-140 Practice Questions Verified by Expert Senior Certified Staff
- * AZ-140 Most Realistic Questions that Guarantee you a Pass on Your FirstTry
- * AZ-140 Practice Test Questions in Multiple Choice Formats and Updatesfor 1 Year