

Exam Questions mb-300

Microsoft Dynamics 365 Unified Operations Core

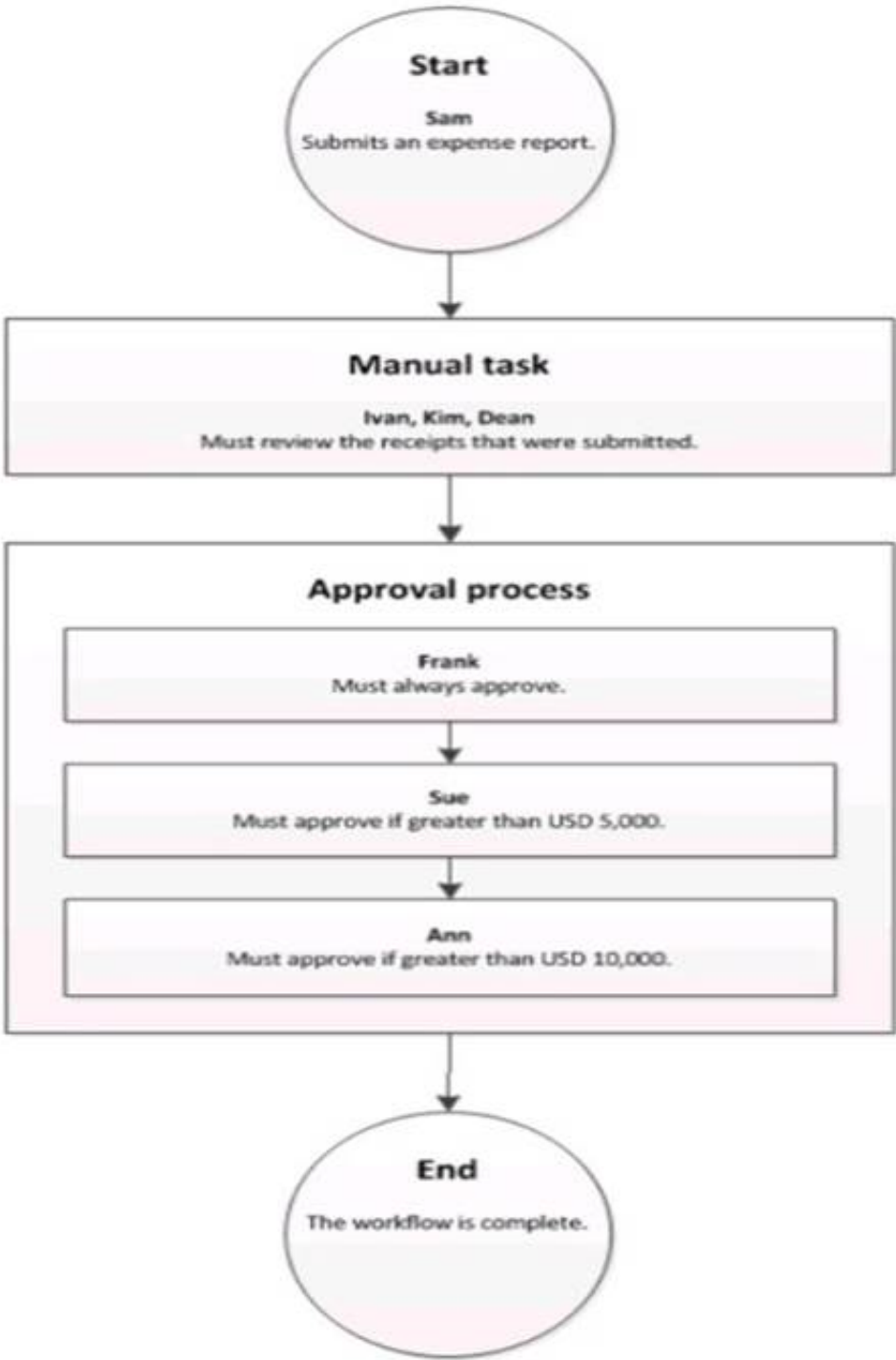
<https://www.2passeasy.com/dumps/mb-300/>



NEW QUESTION 1

HOTSPOT - (Topic 6)

A company sets up a workflow for expense reports. An employee named Sam submits an expense report totaling USD 7,000 to go through the workflow.



Use the drop-down menus to select the answer choice that answers each question based on the information presented in the graphic.
NOTE: Each correct selection is worth one point.

Questions	Answer choice
What statement about the workflow is correct?	<div>Ann can reject the expense report.</div> <div>Ivan, Kim, and Dean must all complete the manual task.</div> <div>The workflow ends after Sue approves the expense report.</div> <div>The expense report will go through Frank, Sue, and Ann for approval.</div>
What type of workflow is this?	<div>Workflow with roles</div> <div>Workflow with a manual decision</div> <div>Workflow with multiple users in a task</div> <div>Workflow with a line-item workflow element</div>

- A. Mastered
- B. Not Mastered

Answer: A

Explanation:

Questions	Answer choice
What statement about the workflow is correct?	<div>Ann can reject the expense report.</div> <div>Ivan, Kim, and Dean must all complete the manual task.</div> <div>The workflow ends after Sue approves the expense report.</div> <div>The expense report will go through Frank, Sue, and Ann for approval.</div>
What type of workflow is this?	<div>Workflow with roles</div> <div>Workflow with a manual decision</div> <div>Workflow with multiple users in a task</div> <div>Workflow with a line-item workflow element</div>

NEW QUESTION 2

HOTSPOT - (Topic 6)

You ate a system administrator using Dynamics 365 Finance You are responsible for reviewing security roles

You need to determine whether rotes have been assigned property

Which reports should you use? To answer, select the appropriate report in the answer area

NOTE: Each correct selection is worth one point.

Review which roles members of the accounts receivable staff have.

	▼
User role assignments	
Role to user assignment	
Security role access	
Security duty assignments	

Review who has been assigned the administrator role.

	▼
User role assignments	
Role to user assignment	
Security role access	
Security duty assignments	

Determine whether a role has been modified to grant more permissions.

	▼
User role assignments	
Role to user assignment	
Security role access	
Security duty assignments	

- A. Mastered
- B. Not Mastered

Answer: A

Explanation:

Review which roles members of the accounts receivable staff have.

	▼
User role assignments	
Role to user assignment	
Security role access	
Security duty assignments	

Review who has been assigned the administrator role.

	▼
User role assignments	
Role to user assignment	
Security role access	
Security duty assignments	

Determine whether a role has been modified to grant more permissions.

	▼
User role assignments	
Role to user assignment	
Security role access	
Security duty assignments	

NEW QUESTION 3

HOTSPOT - (Topic 6)

You want to enhance usability in the Dynamics 365 finance deployment for an organization. You need to set up filters to help people find records that are used regularly.

Which filter expressions should you use? To answer, select the appropriate options in the answer area.

NOTE: Each correct selection is worth one point.

Is circle or is equal to circle

	▼
circle	
circle*	
circle..	
..circle	

Does not contain Texas

	▼
!*Texas*	
"!Texas	
"Texas"	
>Texas	

After metal

	▼
>metal	
metal..	
metal*	
<metal	

Less than or equal to zebra

	▼
..zebra	
>zebra	
zebra*	
<zebra	

- A. Mastered
- B. Not Mastered

Answer: A

Explanation:

Is circle or is equal to circle

	▼
circle	
circle*	
circle..	
..circle	

Does not contain Texas

	▼
!*Texas*	
"!Texas	
"Texas"	
>Texas	

After metal

	▼
>metal	
metal..	
metal*	
<metal	

Less than or equal to zebra

	▼
..zebra	
>zebra	
zebra*	
<zebra	

NEW QUESTION 4

HOTSPOT - (Topic 6)

A company wants to increase user satisfaction by centralizing different work streams in one accessible area by department. You need to recommend a workspace for each requirement.

Which workspace should you recommend? To answer, select the appropriate options in the answer area.

NOTE: Each correct selection is worth one point.

Answer Area

Requirement

Workspace

Current status for month-end processing

	▼
Financial period close	
CFO overview	
Cost accounting ledger administration	
Financial insights	

A vendor's suggested changes to a purchase order

	▼
Purchase order preparation	
Vendor information	
Purchase order confirmation	
Vendor bidding	

- A. Mastered
- B. Not Mastered

Answer: A

Explanation:

Box 1 = Financial Period close Box2 = Purchase order preparation

NEW QUESTION 5

- (Topic 6)

You are a Dynamics 365 for Finance and Operations system administrator for a United States-based corporation that is expanding to other regions.

You set up a new legal entity for Brazil.

You need to enable localization for Brazil in the new legal entity. What should you do?

- A. Create a new Lifecycle Services project.
- B. Create a new entity with your corporate address in the system, and then update the address to the Brazil office address.
- C. Create a new legal entity with the Brazil office address in the system, and then set preferences according to the user.
- D. Create a new configuration key and associate it with the Brazil localization.
- E. Create a new entity in the system with your corporate address and set the user language preferences for Brazil.

Answer: B

NEW QUESTION 6

- (Topic 6)

A company wants to display a warehouse's performance metrics on a Power BI dashboard on a display in the warehouse. You need to connect the Power BI instance to the Dynamics 365 Supply Chain Management instance that the warehouse uses. Which three actions should you perform? Each correct answer presents part of the solution. NOTE Each correct selection is worth one point.

- A. Obtain Azure Active Directory (Azure AD) administrative access.
- B. Link Azure to Dynamics 365 Finance by entering the Application ID in Dynamics 365 Finance.
- C. Register the Dynamics 365 application URL within Azure.
- D. Configure the Dynamics 365 Entity Store.
- E. Register the preconfigured Dynamics 365 service account within Azure.

Answer: ABC

Explanation:

Reference:

<https://docs.microsoft.com/en-us/dynamics365/fin-ops-core/dev-itpro/analytics/configure-power-bi-integration>

NEW QUESTION 7

- (Topic 6)

A company implements Dynamics 365 Finance, the company uses business events to trigger sales order processes.

The cutoff for shipping customer orders is 3:00 PM.

You need to notify the warehouse manager in a Microsoft Teams channel whenever business events occur after 3:00 PM.

Which tool should you use?

- A. Power BI
- B. Power Automate
- C. Workflow framework
- D. Power Virtual Agents

Answer: B

NEW QUESTION 8

HOTSPOT - (Topic 6)

You are planning to import trade agreement journal lines into Dynamics 365 Supply Chain Management from a Microsoft Excel workbook. You configure the source and target mapping as shown in the table below.

Auto-Generated	Auto Default	Source field	Staging field
No	No	JournalNo	JournalNumber
No	No	ItemCode	ItemNumber
Yes	No	Auto	LineNumber
No	No	SalesPrice	Price
No	Yes	Default	CurrencyCode

You need to validate the Excel file and the mappings. Which field or fields originate from which sources? To answer, select the appropriate options in the answer area. NOTE: Each correct selection is worth one point.

Answer Area

Source

Fields in the Excel file

Field calculated by the system

Field calculated by the system

Field fixed to a single value

Field

JournalNo, ItemCode, SalesPrice
JournalNumber, ItemNumber
JournalNo, ItemCode, Auto
JournalNumber, ItemNumber, LineNumber, Price, CurrencyCode

LineNumber
JournalNumber
ItemNumber
CurrencyCode

CurrencyCode
JournalNumber
ItemNumber
LineNumber

- A. Mastered
- B. Not Mastered

Answer: A

Explanation:

Answer Area

Source

Fields in the Excel file

Field calculated by the system

Field calculated by the system

Field fixed to a single value

Field

JournalNo, ItemCode, SalesPrice
JournalNumber, ItemNumber
JournalNo, ItemCode, Auto
JournalNumber, ItemNumber, LineNumber, Price, CurrencyCode

LineNumber
JournalNumber
ItemNumber
CurrencyCode

CurrencyCode
JournalNumber
ItemNumber
LineNumber

NEW QUESTION 9

- (Topic 6)
A company acquires an analytics company that performs research on customer online purchases. You must import customer purchase data from a pre-existing canvas-driven app into a two Dynamics 365 Finance instance. Data must be mapped to the out-of-the-box entities. The canvas-driven app uses Microsoft Excel as a data store. You need to perform the migration. What should you use?

- A. Data Management Framework configuration data template
- B. Data entity change tracking
- C. Dual-write
- D. Microsoft Azure Data Lake

Answer: A

Explanation:

Reference:
<https://docs.microsoft.com/en-us/dynamics365/fin-ops-core/dev-itpro/data-entities/configuration-data-templates>

NEW QUESTION 10

HOTSPOT - (Topic 6)
A company is standardizing its business processes. You plan to facilitate business process alignment by using the Business process modeler (BPM) tool in Lifecycle Services (LCS). You need to identify the main capabilities of BPM. Which of the following can you accomplish with the BPM tool in LCS? To answer, select the appropriate options in the answer area. NOTE: Each correct selection is worth one point.

Capability

Integration

All functionality except

Tasks

Upload flowcharts from Task recorder

Pull master data

Pull reference data

Connect to external databases

Modify flowcharts

Attach video

Push process configurations to instances

Generate gap analysis

- A. Mastered
- B. Not Mastered

Answer: A

Explanation:

Capability	Tasks
Integration	<div> <div></div> <div> Upload flowcharts from Task recorder Pull master data Pull reference data Connect to external databases </div> </div>
All functionality except	<div> <div></div> <div> Modify flowcharts Attach video Push process configurations to instances Generate gap analysis </div> </div>

NEW QUESTION 10

- (Topic 6)

Note: This question is part of a series of questions that present the same scenario. Each question in the series contains a unique solution that might meet the stated goals. Some question sets might have more than one correct solution, while others might not have a correct solution.

After you answer a question in this section, you will NOT be able to return to it. As a result, these questions will not appear in the review screen.

You are a Dynamics 365 for Finance and Operations system administrator. You have a test environment that is used by several people at any given time.

You create a new data entity in your development and migrate the code to the test environment. In the test environment, you are unable to find the data entity in the list.

You need to locate the data entity.

Solution: Restart the Application Object Server (AOS) of the test environment. Does the solution meet the goal?

- A. Yes
- B. No

Answer: B

NEW QUESTION 14

- (Topic 6)

A client runs Dynamics 365 Finance.

The client wants to implement supply chain functionality that is fully integrated with the current Dynamics 365 Retail instance.

You need to implement the new functionality. What should you do?

- A. Configure Dynamics 365 Retail integration with Dynamics 365 Finance by using Common Data Service.
- B. Place the Dynamics 365 Retail instance into maintenance mode by using the Dynamics 365 InstanceManagement portal.
- C. Place the Dynamics 365 Retail instance into maintenance mode by using Lifecycle Services.
- D. Clear the Dynamics 365 Finance configuration in the License configuration form.

Answer: A

NEW QUESTION 16

- (Topic 6)

Note: This question is part of a series of questions that present the same scenario. Each question in the series contains a unique solution that might meet the stated goals. Some question sets might have more than one correct solution, while others might not have a correct solution.

After you answer a question in this section, you will NOT be able to return to it. As a result, these questions will not appear in the review screen.

You are configuring a Dynamics 365 for Finance and Operations environment. You must set up Microsoft Excel data exports.

You need to verify that the solution will result in a successful export of data to Excel. Solution: Use OAuth authentication.

Does the solution meet the goal?

- A. Yes
- B. No

Answer: B

NEW QUESTION 20

- (Topic 6)

You are implement Dynamics 365 Finance.

Data must be imported and exported by using the data management framework.

You need to identify which data management scenario is supported by using the data management framework.

Which scenario is supported?

- A. Data upgrade
- B. Package deployment

- C. Data expansion
- D. Data migration

Answer: D

NEW QUESTION 24

- (Topic 6)

A company that sells, rents, and service heating, ventilation, and air conditioning (HVAC) system implement Dynamics 365 Supply Chain Management. When a maintenance request is created for a condenser unit, the request must be reviewed and approved before a work order is created. You must send both an email message and a text message to the reviewer for each maintenance request.

Which two options should you configure? Each answer represents part if the solution. NOTE: Each correct selection is worth one point.

- A. Power Apps apps
- B. Business events
- C. Workspaces
- D. Power Automate flows
- E. Standard workflows

Answer: BE

Explanation:

Reference: <https://docs.microsoft.com/en-us/dynamics365/fin-ops-core/dev-itpro/business-events/home-page>
<https://docs.microsoft.com/en-us/dynamics365/supply-chain/procurement/procurement-sourcing-workflows>

NEW QUESTION 26

HOTSPOT - (Topic 6)

A company implements Dynamics 365 Commerce. The company email provider blocks sending and receiving of AXTR files. The company disables removable storage. A new finance employee attempts to generate deposit slips on the employee's computer but cannot. You need to do the following:

- Capture the user's attempt to generate deposit slips on the user's computer.
- Load the capture on your computer.
- Identify the missing duties for the user.

What should you do? To answer, select the appropriate options in the answer area. NOTE: Each correct selection is worth one point.

Answer Area

Requirement	Action
Capture the activity.	<div> <div>Use the Task recorder.</div> <div>Use the Security diagnostics for task recorder tool.</div> <div>Use the Task recorder.</div> <div>Use the Business process modeler.</div> <div>Use the Regression suite automation tool.</div> </div>
Load the capture.	<div> <div>Open the capture from this PC.</div> <div>Open the capture from Lifecycle Services.</div> <div>Open the capture from this PC.</div> </div>
Identify the missing duties of the user.	<div> <div>Use the Security diagnostics for task recorder tool.</div> <div>Use the Security diagnostics for task recorder tool.</div> <div>Use the Task recorder.</div> <div>Use the Business process modeler.</div> <div>Use the Regression suite automation tool.</div> </div>

- A. Mastered
- B. Not Mastered

Answer: A

Explanation:

Answer Area

Requirement	Action
Capture the activity.	<div> <div>Use the Task recorder.</div> <div>Use the Security diagnostics for task recorder tool.</div> <div>Use the Task recorder.</div> <div>Use the Business process modeler.</div> <div>Use the Regression suite automation tool.</div> </div>
Load the capture.	<div> <div>Open the capture from this PC.</div> <div>Open the capture from Lifecycle Services.</div> <div>Open the capture from this PC.</div> </div>
Identify the missing duties of the user.	<div> <div>Use the Security diagnostics for task recorder tool.</div> <div>Use the Security diagnostics for task recorder tool.</div> <div>Use the Task recorder.</div> <div>Use the Business process modeler.</div> <div>Use the Regression suite automation tool.</div> </div>

NEW QUESTION 29

- (Topic 6)

You are a Dynamics 365 for Finance and Operations system administrator.

A company named Contoso Ltd. is creating a new legal entity that will be similar to an existing legal entity. Team members copy key entities to the new legal entity using the Data management workspace. They indicate that there were already-configured pieces of data unique to the new legal entity before they ran the Copy

into legal entity process.

The data import/export framework settings are listed in the table below:

Setting	Current value
Ignore error	Yes
Create error file	Yes
Remove duplicates	Yes

You need to determine what happened to the already-configured pieces of data. What happened to the data?

- A. Any source legal entity data that already exists in the destination legal entity will be updated.
- B. Any destination legal entity data will be deleted, and the source data will be inserted.
- C. Any source legal entity data that already exists in the destination legal entity will be ignored.
- D. Any source legal entity data that already exists in the destination legal entity will be displayed as an error for user action in the Data management workspace.

Answer: C

NEW QUESTION 32

- (Topic 6)

Note: This question is part of a series of questions that present the same scenario. Each question in the series contains a unique solution that might meet the stated goals. Some question sets might have more than one correct solution, while others might not have a correct solution.

After you answer a question in this section, you will NOT be able to return to it. As a result, these questions will not appear in the review screen.

A company's Dynamics 365 Commerce production instance is updated monthly as new versions of the software are released.

The company needs to identify any potential issues in new releases. They do not have developers to help with this initiative.

You need to implement a way to regression test scenarios.

Solution: Use the SysTest framework to create unit tests for critical business processes. Does the solution meet the goal?

- A. Yes
- B. No

Answer: B

Explanation:

Reference:

<https://docs.microsoft.com/en-us/dynamics365/fin-ops-core/dev-itpro/perf-test/testing-validation>

NEW QUESTION 34

DRAG DROP - (Topic 6)

A company needs to move data from multiple legacy databases and a separate Dynamics 365 instance into a Dynamics 365 Finance environment.

You need to plan the migration strategy.

Which tool should you use for each requirement? To answer, drag the appropriate components to the correct requirements. Each component may be used once, more than once, or not at all. You may need to drag the split bar between panes or scroll to view content.

NOTE: Each correct selection is worth one point.

Components

Staging tables

Entities

Configuration data projects

Configuration Manager

Requirement

Place the legacy database data in a location where you can manipulate and verify the data.

Migrate sales configuration data from a test environment to a production environment.

Component

Component

Component

- A. Mastered
- B. Not Mastered

Answer: A

Explanation:

Components

Staging tables

Entities

Configuration data projects

Configuration Manager

Requirement

Place the legacy database data in a location where you can manipulate and verify the data.

Migrate sales configuration data from a test environment to a production environment.

Component

Staging tables

Configuration data projects

NEW QUESTION 36

- (Topic 6)

You plan the migration from a Dynamics AX 2012 to a Dynamics 365 for Finance and Operations environment.

You are tasked with overseeing and planning a cutover to guarantee a smooth experience for end users during the cutover. You perform a basic data upgrade validation.

You need to perform a cutover.

Which three tasks must you perform? Each correct answer presents part of the solution. NOTE: Each correct selection is worth one point.

- A. Perform a smoke test.
- B. Copy the upgraded database from the sandbox environment into the production environment.
- C. Complete application setup tasks.
- D. Ensure that Synchronous transfer mode is enabled
- E. Enable the Microsoft Power BI AppSource content packs for Cost management, Financial performance, and Retail channel performance.

Answer: ABC

Explanation:

References:

<https://docs.microsoft.com/en-us/dynamics365/fin-ops-core/dev-itpro/migration-upgrade/upgrade-cutover-testing>

NEW QUESTION 39

DRAG DROP - (Topic 6)

You are the project owner in a Lifecycle Services (LCS) project to deploy a Dynamics 365 for Finance and Operations environment. The system must be configured to enable testers to record processes that become business processes and test plans. You need to configure the system to generate User Acceptance Testing (UAT) test plans. In which order should you perform the actions? To answer, move all actions from the list of actions to the answer area and arrange them in the correct order.

Actions

Create business process libraries in the LCS project.

Enable Azure DevOps sync.

Configure Azure DevOps for the LCS project.

Configure system administrator help parameters to the LCS project.

Enable Sync test cases.

Answer Area

- A. Mastered
- B. Not Mastered

Answer: A

Explanation:

Actions

Create business process libraries in the LCS project.

Enable Azure DevOps sync.

Configure Azure DevOps for the LCS project.

Configure system administrator help parameters to the LCS project.

Enable Sync test cases.

Answer Area

Create business process libraries in the LCS project.

Configure Azure DevOps for the LCS project.

Configure system administrator help parameters to the LCS project.

Enable Azure DevOps sync.

Enable Sync test cases.

NEW QUESTION 42

- (Topic 6)

You are a Dynamics 365 for Finance and Operations system administrator. You have production and testing environments. You move the workflow from the testing environment to the production environment. The workflow in the production environment is stuck in a wait state. You need to resolve the issue with the workflow in the production environment. What should you do?

- A. Set the workflow batch job to critical
- B. Set the workflow messaging batch job group
- C. Grant the user workflow permissions
- D. Set the workflow execution account in the workflow parameters

Answer: D

NEW QUESTION 44

DRAG DROP - (Topic 6)

You sign in to Lifecycle Services (LCS). You need to restart the Internet Information Service (IIS) service in a nonproduction Tier 2 environment. Which three actions should you perform in sequence? To answer, move the appropriate actions from the list of actions to the answer area and arrange them in the correct order.

Actions

Select Maintain and then select Restart services.

Enter the command iisreset /restart.

Select the appropriate environment.

Navigate to the Environment Details page.

Navigate to the System Administration parameters page.

Remotely connect to the server that hosts the Dynamics 365 IIS service.

Answer Area

- A. Mastered
- B. Not Mastered

Answer: A

Explanation:

Actions

Select Maintain and then select Restart services.

Enter the command iisreset /restart.

Select the appropriate environment.

Navigate to the Environment Details page.

Navigate to the System Administration parameters page.

Remotely connect to the server that hosts the Dynamics 365 IIS service.

Answer Area

Select the appropriate environment.

Navigate to the Environment Details page.

Select Maintain and then select Restart services.

NEW QUESTION 45

HOTSPOT - (Topic 6)

You manage a Dynamics 365 for Finance and Operations environment.

In preparation for being migrated into a new environment, data packages are being numbered in alignment with the default numbering formats in Lifecycle Services. A package is named 03.01.002.

You need to identify what this package contains. To answer, select the appropriate option in the answer area.

NOTE: Each correct selection is worth one point.

Segment	Component
03	<div>The environment The module The data type The month</div>
01	<div>The module The month The sequence number The data type</div>
002	<div>The sequence number The data package version The data entity The data type reference</div>

- A. Mastered
- B. Not Mastered

Answer: A

Explanation:

Segment	Component
03	<div>The environment The module The data type The month</div>
01	<div>The module The month The sequence number The data type</div>
002	<div>The sequence number The data package version The data entity The data type reference</div>

NEW QUESTION 48

SIMULATION - (Topic 6)

You are a functional consultant for Contoso Entertainment System USA (USMF).

You need to ensure that human resources managers can approve absences for employees.

To complete this task, sign in to the Dynamics 365 portal.

- A. Mastered
- B. Not Mastered

Answer: A

Explanation:

- You need to assign the duty ‘Approve employee leave requests’ to the human resources managers.
- ? Navigate to System Administration > Security > Security Configuration
- ? On the Roles tab, select the Human Resources Manager role.
- ? Click on Duties then click on Add references.
- ? In the References section, click on Duties. This will list all the available duties.
- ? Select the Approve employee leave requests duty to add it to the role.

NEW QUESTION 50

HOTSPOT - (Topic 6)

You are tasked with setting up Case management in the Dynamics 365 for Finance and Operations deployment for your organization. Your organization must use cases to track defect and enhancement reports for products, so that engineers can improve products over time. Only appropriate employees within the organization should have access to cases and related information.

- * Call center employees create thousands of service cases and ensure that the proper resources are allocated for each service.
- * Service department employees fix cases created by the call center and create cases for defects and enhancement suggestions when they identify them.
- * Engineers review the cases from the service department while planning and designing the next version.

You need to configure the tool to enable tracking of service cases and product defects and enhancements.

Which Case management settings should you choose for each category or categories? To answer, select the appropriate options in the answer area.

NOTE: Each correct selection is worth one point.

	Option	Value
Category to use.		General and Production Service and Product change
Service department in which employees create cases.		General Production Service Product change
Call center in which employees create cases.		General Production Service Product change

- A. Mastered
- B. Not Mastered

Answer: A

Explanation:

	Option	Value
Category to use.		General and Production Service and Product change
Service department in which employees create cases.		General Production Service Product change 1
Call center in which employees create cases.		General Production Service Product change

NEW QUESTION 53

SIMULATION - (Topic 6)

You are a functional consultant for Contoso Entertainment System USA (USMF). You need to modify which default webpage is displayed when you access the system so that the Employee Self Service Portal is displayed by default. To complete this task, sign in to the Dynamics 365 portal.

- A. Mastered
- B. Not Mastered

Answer: A

Explanation:

- ? Click the Settings icon in the upper right corner, then click Personalization Settings to open the Set Personal Options page.
- ? On the General tab, under Select your home page and setting for Get Started paned, configure the Default Pane to be the Employee Self Service Portal.

NEW QUESTION 54

HOTSPOT - (Topic 6)

You set up a new instance of Dynamics 365 for Finance and Operations. The IT department needs to track requisitions for new equipment by using unique identifiers. Due to regulatory requirements, the unique identifiers must not have missing values. Everyone in the organization will make requisitions using the unique identifiers. You need to establish unique identifiers.

What application features should you use? To answer, select the application feature to match the parameter in the answer area.

NOTE: Each correct selection is worth one point.

Answer Area

Parameter	Application feature
System entity	Number sequences Case management Workflow system Purchasing policy
Type for a prefix of ITreq	Alphanumeric segment Constant segment
Scope	Legal entity Company Shared
Type	Non-continuous Continuous

- A. Mastered
- B. Not Mastered

Answer: A

Explanation:

Answer Area

Parameter	Application feature
System entity	Number sequences Case management Workflow system Purchasing policy
Type for a prefix of ITreq	Alphanumeric segment Constant segment
Scope	Legal entity Company Shared
Type	Non-continuous Continuous

NEW QUESTION 59

- (Topic 6)

A company delivers seafood to retail stores.

Refrigeration trucks send temperature and distance data from internet of Things (IoT) sensors over 5G. Data is written to an API endpoint in Microsoft Azure. The Temperature and distance data are stored in Common Data Service and edited in Dynamics 365 Finance.

You create model- driven apps to visual data. The apps support online and offline modes. You must update the following:

- * The shipment information in Dynamics 365 Finance based on delivery distance and real- time temperature readings from trucks
- * The corresponding Common Data Service data with the latest shipment status You need to update the shipment information.

What should you use?

- A. Dual-write
- B. Power Automate (Flow)
- C. Azure IoT Hub
- D. Azure IoT Central
- E. Azure IoT Edge

Answer: A

NEW QUESTION 64

DRAG DROP - (Topic 6)

You are implementing Dynamics 365 Finance. You have the following user requirements:

- ? The ability to see a tile that will display the total of all received purchase orders
- ? Coordinate the closure of Accounts payable after the last payment has been processed for the month

You need to configure the system.

Which option should you use? To answer, drag the appropriate option to the correct requirements. Each option may be used once, more than once, or not at all.

You may need to drag the split bar between panes or scroll to view content.

NOTE: Each correct selection is worth one point.

Options	Requirements	Option
Workspace	Ability to see a tile that will display the total of all received purchase orders	
Workflow		
Purchase order inquiry	Coordinate the closure of Accounts payable	
Purchase order report		

- A. Mastered

B. Not Mastered

Answer: A

Explanation:

Options	Requirements	Option
Workspace	Ability to see a tile that will display the total of all received purchase orders	Workspace
Workflow		
Purchase order inquiry	Coordinate the closure of Accounts payable	Workspace
Purchase order report		

NEW QUESTION 69

SIMULATION - (Topic 6)

A user named Karl recently moved to France and will begin working at Contoso Consulting FR (FRSI). You need to ensure that the default legal entity for Karl is set to FRSI. The solution must ensure that the default date, time, and number format for Karl is set to French. To complete this task, sign in to the Dynamics 365 portal.

- A. Mastered
- B. Not Mastered

Answer: A

Explanation:

- ? Navigate to System Administration > Users > Users.
- ? Select Karl's user account.
- ? Click User Options.
- ? Go to the Preferences tab.
- ? In the Company field, select Contoso Consulting FR (FRSI).
- ? In the Date, time and number format field, select French.
- ? Click Save to save the changes.

NEW QUESTION 74

- (Topic 6)

A company implements Dynamics 365 Finance. The company plans to implement the Regression Suite Automation Tool (RSAT) to assist with their automated testing. The company creates test scripts and must store the scripts in a location that is accessible by RSAT. You need to configure RSAT. Where should you upload the test scripts?

- A. Microsoft SharePoint
- B. Microsoft Azure DevOps
- C. Document Management
- D. Common Data Service

Answer: B

Explanation:

Reference:
<https://docs.microsoft.com/en-us/dynamics365/fin-ops-core/dev-itpro/perf-test/rsat/rsat-overview#rsat-user-interface-overview>

NEW QUESTION 77

- (Topic 6)

A company plans to create a global address book and additional address books for each line of business. You need to help add parties to the address books. What party types can you use for both the global address book and the additional address books? NOTE: Each correct selection is worth one point.

- A. Customer
- B. Vendor
- C. Person
- D. Competitor
- E. Organization

Answer: CE

Explanation:

<https://docs.microsoft.com/en-sg/dynamics365/unified-operations/fin-and-ops/organization-administration/overview-global-address-book?toc=%2Fdynamics365%2Funified-operations%2Ftalent%2Ftoc.json>

NEW QUESTION 82

DRAG DROP - (Topic 6)

You are a Dynamics 365 for Finance and Operations implementation consultant.

You plan to use automated regression testing in a company's environment, as the system will be updated frequently until automatic updates can be applied.

You need to identify when and what key business object should be used during the implementation.

Which business objects should you use? To answer, drag the appropriate objects to the correct component actions. Each object may be used once, more than once, or not at all. You may need to drag the split bar between panes or scroll to view content.

NOTE: Each correct selection is worth one point.

- A. Mastered
- B. Not Mastered

Answer: A

Explanation:

NEW QUESTION 85

- (Topic 6)

You are implementing Dynamic 365 Finance.

Local customer service agents answer phone call from customers and vendors on invoices and payments. All conversations with customers and vendors are recorded and documented.

You need to implement a technology to answer customer questions for invoices and payments.

- A. Dynamics 365 finance Document Routing Agent
- B. Microsoft Azure Cognitive Services Text to Speech
- C. Power Virtual Agents
- D. Dynamo 365 finance Local Agent
- E. Microsoft Azure Cognitive Services Speech to Text

Answer: C

NEW QUESTION 88

- (Topic 6)

Note: This question is part of a series of questions that present the same scenario. Each question in the series contains a unique solution. Determine whether the solution meets the stated goals. Some question sets might have more than one correct solution, while others might not have a correct solution.

After you answer a question in this section, you will NOT be able to return to it. As a result, these questions will not appear in the review screen.

You are a Dynamics 365 Finance sales manager. You use a Power BI dashboard that shows near-real-time sales data from reports and tiles.

It is impractical to keep switching between multiple applications.

You need to configure a way to access the Power BI reports within the Dynamics 365 Finance client.

Solution: Create a link to the Power BI reports in your workspace. Does the solution meet the goal?

- A. Yes
- B. No

Answer: A

Explanation:

Reference:

<https://docs.microsoft.com/en-us/dynamics365/fin-ops-core/dev-itpro/analytics/pin-power-bi-reports>

NEW QUESTION 91

- (Topic 6)

A company implements Dynamics 365 Finance.

The implementation team must build acceptance scripts to make sure that common business use cases can be performed in the new system. They must test use cases by stepping through required tasks, organized by functional hierarchy.

You need to create User Acceptance Testing (UAT) tests in Lifecycle Services (LCS) that can be easily repeatable.

What should you use?

- A. Data management tool
- B. APQC Unified Library
- C. Business process modeler (BPM) synced with Microsoft Azure DevOps
- D. Configuration data manager

Answer: C

Explanation:
Reference:
<https://docs.microsoft.com/en-us/dynamics365/fin-ops-core/dev-itpro/lifecycle-services/using-task-guides-and-bpm-to-create-user-acceptance-tests>

NEW QUESTION 93

- (Topic 6)
You need to ensure that employees can submit and approve their own Dynamics 365 Finance workflow requests.
What are two possible ways to achieve this goal? Each correct answer presents a complete solution.
NOTE: Each correct selection is worth one point.

- A. Add the employees to the workflow administrator security role.
- B. Add the employees to Azure Active Directory (Azure AD) as domain administrators.
- C. Add the employees as an approver to the workflow action.
- D. Create a modification in the code that allows employees to modify workflows.
- E. Clear the Disallow approval by submitter check box.

Answer: CE

NEW QUESTION 94

HOTSPOT - (Topic 6)
A company plans to use Dynamics 365 Finance. You need to implement the security architecture.
Which component should you use for each requirement? To answer, select the appropriate security component in the answer area.
NOTE: Each correct selection is worth one point.

Requirement	Security component
Group the security configuration for employees with the same job function.	<div>Security roles</div> <div>Duties</div> <div>Privileges</div> <div>Permissions</div>
Assign check-depositing tasks to a group of people as part of the accounts receivable process.	<div>Security roles</div> <div>Duties</div> <div>Privileges</div> <div>Permissions</div>
Restrict access to a specific table or chart.	<div>Security roles</div> <div>Duties</div> <div>Privileges</div> <div>Permissions</div>

- A. Mastered
- B. Not Mastered

Answer: A

Explanation:
Answer Area

Requirement	Security component
Group the security configuration for employees with the same job function.	<div>Security roles</div> <div>Duties</div> <div>Privileges</div> <div>Permissions</div>
Assign check-depositing tasks to a group of people as part of the accounts receivable process.	<div>Security roles</div> <div>Duties</div> <div>Privileges</div> <div>Permissions</div>
Restrict access to a specific table or chart.	<div>Security roles</div> <div>Duties</div> <div>Privileges</div> <div>Permissions</div>

NEW QUESTION 96

- (Topic 6)
You are a Dynamics 365 for Finance and Operations developer.
New features for Dynamics 365 for Finance and Operations have been released. Your company plans to upgrade their Dynamics 365 instance soon.
You need to download a virtual machine that includes all of the new features so that you can explore the new features.
Where should you go?

- A. Microsoft Connect
- B. Shared Asset library
- C. Environments
- D. My subscription
- E. Microsoft Developer Network

Answer: B

NEW QUESTION 97

SIMULATION - (Topic 6)
A company named Fabrikam, Inc. plans to open an office in the United Kingdom.
You need to create a new legal entity named Fabrikam that uses a company code of FABR.
To complete this task, sign in to the Dynamics 365 portal.

- A. Mastered
- B. Not Mastered

Answer: A

Explanation:

- ? Go to Navigation pane > Modules > Organization administration > Organizations > Legal entities.
- ? Click New.
- ? In the Name field, type Fabrikam.
- ? In the Company field, type FABR.
- ? In the Country/region field, enter or select a value.
- ? Click OK.

NEW QUESTION 99

- (Topic 6)

Note: This question is part of a series of questions that present the same scenario. Each question in the series contains a unique solution that might meet the stated goals. Some question sets might have more than one correct solution, while others might not have a correct solution.

After you answer a question in this section, you will NOT be able to return to it. As a result, these questions will not appear in the review screen.

You are a functional consultant who is deploying Dynamics 365 for Finance and Operations.

The implementation must:

- ? Use an iterative approach
- ? Integrate with real-world data
- ? Enforce standards and governance
- ? Implement multiple rounds of feedback

You need to deploy and validate the implementation.

Solution: Deploy the out-of-the-box solution. Enable users to customize the solution based on individual user scenarios.

Does the solution meet the goal?

- A. Yes
- B. No

Answer: B

NEW QUESTION 101

DRAG DROP - (Topic 6)

You are testing service updates for Dynamics 365 Finance by using the Regression suite automation tool (RSAT).

You need to select the appropriate test case type for each test requirement.

Which test case types should you use? To answer, drag the appropriate test case types to the correct test requirements. Each test case type may be used once, more than once, or not at all. You may need to drag the split bar between panes or scroll to view content.

NOTE: Each correct selection is worth one point.

Test case types	Answer Area
<div>automated</div>	
<div>chained</div>	
<div>derived</div>	
<div>manual</div>	

Test requirement	Test case type
Use a single task recording to complete multiple tests by using different parameter values.	<div></div>
Use a value captured in one test as a variable in a second test.	<div></div>

- A. Mastered
- B. Not Mastered

Answer: A

Explanation:

Box 1: derived Derived test case

RSAT lets you use the same task recording with multiple test cases, enabling a task to run with different data configurations.

Box 2: chained

Saved variables and chaining of test cases

One of the key features of RSAT is the chaining of test cases, that is, the ability of a test to pass variables to other tests

NEW QUESTION 102

SIMULATION - (Topic 6)

You are a functional consultant for Contoso Entertainment System USA (USMF).

You need to assign the Purchasing agent security role to Wayne Samuel Jorden for USMF only.

To complete this task, sign in to the Dynamics 365 portal.

- A. Mastered
- B. Not Mastered

Answer: A

Explanation:

- ? Navigate to System administration > Security > Assign users to roles
- ? Select the Purchasing Agent role.
- ? Click the Manually assign / exclude users button
- ? Select the Wayne Samuel Jorden user account and click the Assign to role button.

- ? Click the Assign organizations button
- ? Select the Grant access to specific organizations option
- ? Select the USMF legal entity and click the Grant button.

NEW QUESTION 106

- (Topic 6)

You plan a data migration from Dynamics AX 2009 to a Dynamics 365 for Finance and Operations environment.

You need to ensure that you can perform the data migration. What should you do first?

- A. Upgrade the existing on-premises environment to Dynamics 365 for Finance and Operations online
- B. Migrate content to Dynamics POS (Point-of-Sale) 2009
- C. Upgrade the existing on-premises environment to Dynamics AX 2012 R2
- D. Migrate content to Dynamics 365 Business Central

Answer: C

NEW QUESTION 111

- (Topic 6)

Note: This question is part of a series of questions that present the same scenario. Each question in the series contains a unique solution. Determine whether the solution meets the stated goals. Some question sets might have more than one correct solution, while others might not have a correct solution.

After you answer a question in this section, you will NOT be able to return to it. As a result, these questions will not appear in the review screen.

A third-party logistics company uses Dynamics 365 Supply Chain Management to manage its warehouses.

Customers send items to the company's warehouse for controlled storage. Once a month, customers send the company an email with an attachment containing new items entered in a standardized Excel template.

The company must be able to do the following:

- Migrate the data into Dynamics 365 Supply Chain Management.
- Avoid using Dynamics 365 Supply Chain Management system forms to enter the data.

You need to identify the configuration and tool to assist with entering the data into the system.

Solution: Create an Excel template with an OData entity. Enter the new items into the Excel template and publish the changes to Dynamics 365 Supply Chain Management.

Does the solution meet the goal?

- A. Yes
- B. No

Answer: A

NEW QUESTION 116

- (Topic 6)

A company is implementing Dynamics 365 Finance and Dynamics 365 Supply Chain Management. A proprietary reporting solution is used across multiple enterprise resource planning (ERP) applications and is the primary reporting engine for the company.

Several key entities must be synchronized to a reporting database and aggregated with other ERP systems. The reporting database must be accessed by using Microsoft Transact-SQL (T-SQL).

You need to implement the Dynamics 365 Finance and Dynamics 365 Supply Chain Management feature.

Which feature should you use?

- A. Dual-write
- B. Finance and Operations Connector
- C. Bring your own database (BYOD)
- D. Data task automation

Answer: C

NEW QUESTION 120

- (Topic 6)

Note: This question is part of a series of questions that present the same scenario. Each question in the series contains a unique solution that might meet the stated goals. Some question sets might have more than one correct solution, while others might not have a correct solution.

After you answer a question in this section, you will NOT be able to return to it. As a result, these questions will not appear in the review screen.

You are developing a file-based integration to Dynamics 365 for Finance and Operations.

Microsoft Excel files with 15,000 or more records need to be imported into the system periodically by individual users. The records need to be imported in full within a 5-minute approved window.

You need to determine how to accomplish the import into the system. Solution: Import the data by using the recurring data integrations API. Does the solution meet the goal?

- A. Yes
- B. No

Answer: A

Explanation:

References:

<https://docs.microsoft.com/en-us/dynamics365/fin-ops-core/dev-itpro/data-entities/integration-overview>

<https://docs.microsoft.com/en-us/dynamics365/fin-ops-core/dev-itpro/data-entities/data-management-api>

NEW QUESTION 123

HOTSPOT - (Topic 6)

You finalize customizations to a deployment by using Dynamics 365 Commerce.

The deployment is global and requires support of multiple languages. You engage with Microsoft FastTrack. The Microsoft FastTrack engineer requires you to share the languages for the deployment.

You need to provide the language data to the engineer by using asset libraries.

How should you configure the asset libraries? To answer, select the appropriate options in the answer area.

NOTE: Each correct selection is worth one point.

Answer Area

Asset library option

Configuration

Asset library type

Shared

Project level

Asset type

Software deployable package

GER configuration

Dynamics 365 Retail SDK

Database backup

Asset scope

Me

Project

Organization

- A. Mastered
- B. Not Mastered

Answer: A

Explanation:

<https://learn.microsoft.com/en-us/dynamics365/fin-ops-core/dev-itpro/lifecycle-services/asset-library>

NEW QUESTION 126

- (Topic 6)

Note: This question is part of a series of questions that present the same scenario. Each question in the series contains a unique solution that might meet the stated goals. Some question sets might have more than one correct solution, while others might not have a correct solution.

After you answer a question in this section, you will NOT be able to return to it. As a result, these questions will not appear in the review screen.

You are a Dynamics 365 for Finance and Operations security administrator.

When testing security setups, users report that certain roles are gaining access to sensitive information via a form in the system.

You must investigate which user roles have what visibility and access level to system objects, and then send a report to the implementation team to address security compliance concerns.

You need to report the information from the system. Solution: Generate the Security duty assignments report. Does the solution meet the goal?

- A. Yes
- B. No

Answer: B

NEW QUESTION 128

- (Topic 6)

A company implements Dynamics 365 Finance.

The implementation team must build acceptance testing scripts to make sure that common business use

cases can be performed in the new system. They must use cases by stepping through required tasks, organized by functional hierarchy.

You need to create User Acceptance Testing (UAT) tests in Lifecycle Services (LCS) that can be easily repeatable.

What should you use?

- A. Business process modeler (BPM) synced with Microsoft Azure DevOps
- B. APQC Unified Library
- C. Usage profiler
- D. Configuration data manager

Answer: A

NEW QUESTION 131

- (Topic 6)

You are a Dynamics 365 for Finance and Operations system administrator.

The expense department relies heavily on properly operating workflows. If there is a failure in the workflow, the issue needs to get resolved quickly.

You need to make sure that the system actively tracks the status, so the support team can monitor and take

actions against any failures.

What should you do? Each correct answer presents a complete solution. NOTE: Each correct selection is worth one point.

- A. Set the monitoring category of the Workflow message processing batch job to Workflow.
- B. Set the critical job flag of the Workflow message processing batch job to True.
- C. Set the Ignore task failure flag of the Workflow message processing batch job to False.
- D. Set the batch job named Workflow message processing to send an email when the status of the batch job to Workflow.
- E. Set the priority field of the Workflow message processing batch job to 1.

Answer: BCD

NEW QUESTION 136

- (Topic 6)

You are responsible for regulatory compliance for a Dynamics 365 for Finance and Operations environment.

You need to be able to search for the regulatory features of Dynamics 365 for Finance and Operations.

What should you use?

- A. Intelligent Data Management Framework (IDMF)
- B. System diagnostics
- C. Application Object Tree (AOT)
- D. Issue search

Answer: D

Explanation:

References:

<https://docs.microsoft.com/en-us/dynamics365/unified-operations/dev-itpro/lifecycle-services/issue-search-lcs>

NEW QUESTION 141

- (Topic 6)

You implement Dynamics 36b Supply Chain Management. You have over 2,000 vendor records. You configure vendor groups to differentiate international vendor's horn domestic vendors. You need to locate vendors in France with payment terms of 30 days.

- A. Use the global address book to locate the vendors.
- B. Use a successive quick filter for vendor group and payment terms.
- C. Create a report filtered by vendor group.
- D. Create an advanced filter on the All vendors list page

Answer: D

NEW QUESTION 142

- (Topic 6)

Note: This question is part of a series of questions that present the same scenario. Each question in the series contains a unique solution that might meet the stated goals. Some question sets might have more than one correct solution, while others might not have a correct solution.

After you answer a question in this section, you will NOT be able to return to it. As a result, these questions will not appear in the review screen.

You are configuring a Dynamics 365 for Finance and Operations environment. You must set up Microsoft Excel data exports.

You need to verify that the solution will result in a successful export of data to Excel.

Solution: Use Workbook Designer to build an editable custom export of customer data that includes only postal code, city, and state.

Does the solution meet the goal?

- A. Yes
- B. No

Answer: A

NEW QUESTION 146

- (Topic 6)

You implement Dynamic 365 Finance.

You must post a message to a Microsoft teams channel each time a write-off amount is over \$1,000 USD.

You need to determine which tools to use.

Which two tools should you use? Each correct answer presents part of the solution. NOTE: Each correct selection is worth one point.

- A. Power Apps
- B. Business Events
- C. Dynamics 365 Finance workflow
- D. Power Automate

Answer: AD

NEW QUESTION 149

- (Topic 6)

You are a Dynamic 365 Finance sales manager. You use a Power BI dashboard that shows near-real-time sales data from reports and tiles.

It is impractical to keep switching between multiple application.

You need to configure a way to access the Power BI reports within the Dynamic 365 Finance client.

Solution: Include the power BI reports In a Power BI App and pin the Power BI App to your workspace.

Does the solution meet the goal?

- A. Yes
- B. No

Answer: B

NEW QUESTION 154

- (Topic 6)

A company plans to set up an organizational hierarchy to manage organizational relationships. You need to identify which organizational purpose to use. What purpose can you assign to an organizational hierarchy?

- A. Centralized payments
- B. Financial reason code
- C. Cost center
- D. Price models

Answer: A

Explanation:

Reference:

<https://docs.microsoft.com/en-us/dynamics365/unified-operations/financials/cash-bank-management/set-up-centralized-payments>

NEW QUESTION 156

HOTSPOT - (Topic 6)

You are a business process analyst using Dynamics 365 Finance. You develop business processes for your organization.

You need to review standard business processes from similar industries and make modifications for your organization.

Which business process libraries in Lifecycle Services should you use? To answer, select the appropriate options in the answer area.

NOTE: Each correct selection is worth one point.

Requirements

Tools

Find standard business processes used by other corporations and industries.

	▼
Global libraries	
Corporate libraries	
My libraries	
Core business processes	

Find processes from other departments.

	▼
Corporate libraries	
Support processes	
My libraries	
Global libraries	

- A. Mastered
- B. Not Mastered

Answer: A

Explanation:

References:

<https://docs.microsoft.com/en-us/dynamics365/fin-ops-core/dev-itpro/lifecycle-services/creating-editing-browsing>

NEW QUESTION 160

- (Topic 6)

You are working as a functional consultant in a new Dynamics 365 for Finance and Operations environment.

Your organization conducts business within the United States, with offices in several states.

The organization

has legal entities defined for each state and must share common tables between entities. Each legal entity has the following setup:

- ? Users
- ? Products
- ? Customers
- ? Tax authorities
- ? Payment terms
- ? Human Resources data
- ? Site-specific stock ordering

You need to consolidate reports used for financial-consolidation reporting in a new legal entity.

What should you do?

- A. Define the consolidation period

- B. Specify the range of product for consolidation
- C. Define Human Resources data
- D. Create users

Answer: A

NEW QUESTION 163

HOTSPOT - (Topic 5)

You need to configure the alert configuration for notification1.

Which alert configurations should you use? To answer, select the appropriate options in the answer area.

NOTE: Each correct selection is worth one point.

Answer Area

Alert configuration	Value
Event type	<input type="checkbox"/> Create and delete <input type="checkbox"/> Update <input type="checkbox"/> Due date
Conditions	<input type="checkbox"/> Current selected record <input type="checkbox"/> All records

- A. Mastered
- B. Not Mastered

Answer: A

Explanation:

Box 1: Update

The system must send the following notifications:

- * Dedicated concierge representative must be automatically notified when an exchanged product has shipped. The concierge representative must set up the alert.
- * External customers must be notified of the new consumer exchanges. The notification must integrate into the customer's third party dashboard and must not be sent as an email notification.

Box 2: Current selected record

NEW QUESTION 166

DRAG DROP - (Topic 6)

You are implementing Dynamics 365 Supply chain Management. Dynamic 365 customer Engagement was deployed to production.

You have the following requirement.

Upload the initial on-hand quantities into Dynamics 365 Supply Chain management. View on-hand inventory to include current transactions in Dynamics Customer Engagement.

You need to manage the on-hand records in the applications.

Which features should you use? To answer, drag the appropriate feature to the correct requirements. Each feature may be used once, more than once, or not at all. You may be need to drag the split bar between panes on scroll to view content.

NOTE: Each correct selection is worth one point.

Features

- Data Management Framework
- Dual Write
- Excel add-in
- Microsoft Dataverse

Answer Area

Requirement	Feature
Upload the initial on-hand quantities into Dynamics 365 Supply Chain Management.	<input type="text" value="Feature"/>
View on-hand inventory to include current transactions in Dynamics 365 Customer Engagement.	<input type="text" value="Feature"/>

- A. Mastered
- B. Not Mastered

Answer: A

Explanation:

Features

- Data Management Framework
- Dual Write
- Excel add-in
- Microsoft Dataverse

Answer Area

Requirement	Feature
Upload the initial on-hand quantities into Dynamics 365 Supply Chain Management.	<input type="text" value="Data Management Framework"/>
View on-hand inventory to include current transactions in Dynamics 365 Customer Engagement.	<input type="text" value="Dual Write"/>

NEW QUESTION 171

DRAG DROP - (Topic 6)

You are importing from a third-party e-commerce system into Dynamics 365 Finance. The Sales Tax Code Groups data package is configured as follows:

Entity	Execution unit	Level in execution unit	Sequence in level
Sales tax code names	1	1	1
Sales tax code values	1	1	2
Sales tax code limits	1	1	4
Sales tax exempt numbers	2	1	2
Sales tax reporting codes	3	1	1

You start the import process.

You need to determine when each entity will start to import.

What will the system do? To answer, drag the start imports to the appropriate entity. Each start import may be used once, more than once, or not at all. You may need to drag the split bar between panes or scroll to view content.

NOTE: Each correct selection is worth one point.

Start imports	Entity	Start import
Immediately	Sales tax code names	
After Sales tax code names	Sales tax code values	
After Sales tax code values	Sales tax code limits	
After Sales tax limits	Sales tax exempt numbers	
After Sales tax exempt numbers	Sales tax reporting codes	

- A. Mastered
- B. Not Mastered

Answer: A

Explanation:

Start imports	Entity	Start import
Immediately	Sales tax code names	Immediately
After Sales tax code names	Sales tax code values	After Sales tax code names
After Sales tax code values	Sales tax code limits	After Sales tax code values
After Sales tax limits	Sales tax exempt numbers	After Sales tax limits
After Sales tax exempt numbers	Sales tax reporting codes	After Sales tax exempt numbers

NEW QUESTION 173

HOTSPOT - (Topic 6)

A company implements Dynamics 365 Supply Chain Management. The company creates a separate Microsoft Azure SQL database for reporting.

You must synchronize any data changes made in the Supply Chain Management database with the reporting database.

You need to configure the system.

What should you use? To answer, select the appropriate options in the answer area. NOTE: Each correct selection is worth one point.

Requirement	Component
Implement the feature used to synchronize the data.	<div>▼</div> <div> Classic Data Integration Data management Dual-write OData </div>
Identify the data to synchronize.	<div>▼</div> <div> Custom Query Table Entity Database </div>

- A. Mastered
- B. Not Mastered

Answer: A

Explanation:

Requirement	Component
Implement the feature used to synchronize the data.	<div>▼</div> <div>Classic Data Integration</div> <div>Data management</div> <div>Dual-write</div> <div>OData</div>
Identify the data to synchronize.	<div>▼</div> <div>Custom Query</div> <div>Table</div> <div>Entity</div> <div>Database</div>

NEW QUESTION 178

- (Topic 6)

You are responsible for automation efforts in a Dynamics 365 for Finance and Operations environment. You are running into performance issues on a specific Application Object Server (AOS) that is over-used. You need to alter your batch processing of high-demand items to have affinity to a new AOS server. What batch processing component should you change?

- A. Batch task
- B. Batch group
- C. Batch periods
- D. Batch job

Answer: B

Explanation:

Reference:

<https://docs.microsoft.com/en-us/dynamics365/fin-ops-core/dev-itpro/sysadmin/batch-server-overview>

NEW QUESTION 181

DRAG DROP - (Topic 6)

Your company is using a highly customized version of Dynamics 365 for Finance and Operations. You have identified a new hotfix that will correct several important issues that have caused many user complaints. You need to determine whether the hotfix will break any customizations. Which four actions should you perform in sequence? To answer, move the appropriate actions from the list of actions to the answer area and arrange them in the correct order.

Actions	Answer Area
Upload the hotfix to Lifecycle Services	
Download the hotfix from Lifecycle Services	
Check in the entire hotfix as pending change and schedule and deploy it to the production environment	
Build the hotfix in the development environment and accept changes	
Install the hotfix in your Microsoft Azure DevOps application development environment in an Active state	
Install the hotfix in your Microsoft Azure DevOps application development environment in a Pending state	

- A. Mastered
- B. Not Mastered

Answer: A

Explanation:

References:

<https://docs.microsoft.com/en-us/dynamics365/unified-operations/dev-itpro/migration-upgrade/install-metadata-hotfix-package>

NEW QUESTION 182

DRAG DROP - (Topic 6)

DRAG DROP

You are configuring a sales order workflow in Dynamics 365 Supply Chain Management. An application stores the priority status value. The application is not integrated with

Dynamics 365 Supply Chain Management.
You need to select the element type to use in the workflow.
Which element type should you use? To answer, drag the appropriate element type to the correct element. Each element type may be used once, more than once, or not at all. You may need to drag the split bar between panes or scroll to view content.
NOTE: Each correct selection is worth one point.

Element types	Element	Element Type
Manual Task	A user confirms if priority status is awarded, which will result in additional checks being skipped.	
Manual Decision	A credit check must be performed by the system.	
Automated Task	If the customer does not have a primary phone number, additional tasks must be performed.	
Conditional Decision		

- A. Mastered
- B. Not Mastered

Answer: A

Explanation:

Element types	Element	Element Type
Manual Task	A user confirms if priority status is awarded, which will result in additional checks being skipped.	Manual Decision
Manual Decision	A credit check must be performed by the system.	Automated Task
Automated Task	If the customer does not have a primary phone number, additional tasks must be performed.	Conditional Decision
Conditional Decision		

NEW QUESTION 186

- (Topic 6)
You set up security roles for the users in a company. You must use standard security roles when possible. You need to identify the standard security roles. Which of the following can you assign to a user as a standard security role?

- A. Accounting manager
- B. Alliance manager
- C. Developer
- D. Business development manager

Answer: A

NEW QUESTION 189

- (Topic 6)
You are a Dynamics 365 for Finance and Operations implementation team lead. A series of test plans need to be created and tracked during a company's development phase. Multiple users will be testing multiple aspects as code is released. Issues and remediations to bugs will also need to be tracked. You need to identify Microsoft solutions that offer these capabilities. What should you use?

- A. Microsoft Azure DevOps
- B. Dynamics 365 for Finance and Operations
- C. Solution management
- D. Lifecycle Services (LCS)

Answer: A

NEW QUESTION 194

HOTSPOT - (Topic 6)
You are a system administrator using Dynamics 365 for Finance and Operations. You are responsible for troubleshooting workflows. You need to determine where workflows are failing based on error messages. Which runtime is raising the error when the following activity and error occurs? To answer, select the appropriate runtime in the answer area.
NOTE: Each correct selection is worth one point.

Activity and error	Runtime
A user submits an expense report by clicking the Submit button on one of the workflow controls. An error occurs.	Managed workflow runtime X++ workflow runtime
.NET Interop from X++ receives the message and starts a new workflow instance via Windows Workflow Foundation. An error occurs.	X++ workflow runtime Managed workflow runtime
The messaging batch job reads the Workflow started message from the message queue and invokes the application event handler to process a workflow started event. An error occurs.	Managed workflow runtime X++ workflow runtime

- A. Mastered

B. Not Mastered

Answer: A

Explanation:

References:

https://docs.microsoft.com/en-us/dynamics365/unified-operations/fin-and-ops/organization-administration/workflow-system-architecture

NEW QUESTION 195

HOTSPOT - (Topic 6)

You are implementing Dynamics 365 Supply Chain Management.

You must ensure employee address information is only accessible to users in the human resources department.

You need to configure the solution.

How should you configure the solution? To answer, select the appropriate options in the answer area.

NOTE: Each correct selection is worth one point.

Answer Area

Requirements	Configuration
Hide employee records.	<input type="checkbox"/> Mark the address as Private. <input type="checkbox"/> Mark the address as Primary. <input type="checkbox"/> Assign the party to the address book. <input type="checkbox"/> Create a relationship between the party and the address book.
Enable human resources access.	<input type="checkbox"/> Assign security roles to Private location security roles. <input type="checkbox"/> Assign teams to the address book. <input type="checkbox"/> Assign the party to the address book. <input type="checkbox"/> Assign team members to the address book.

A. Mastered

B. Not Mastered

Answer: A

Explanation:

Answer Area

Requirements	Configuration
Hide employee records.	<input checked="" type="checkbox"/> Mark the address as Private. <input type="checkbox"/> Mark the address as Primary. <input type="checkbox"/> Assign the party to the address book. <input type="checkbox"/> Create a relationship between the party and the address book.
Enable human resources access.	<input type="checkbox"/> Assign security roles to Private location security roles. <input checked="" type="checkbox"/> Assign teams to the address book. <input type="checkbox"/> Assign the party to the address book. <input type="checkbox"/> Assign team members to the address book.

NEW QUESTION 197

SIMULATION - (Topic 6)

You are a functional consultant for Contoso Entertainment System USA (USMF).

You need to modify the hierarchy for centralized payments to include Contoso Consulting FR (FRSI) for all the payments run for USMF.

To complete this task, sign in to the Dynamics 365 portal.

A. Mastered

B. Not Mastered

Answer: A

Explanation:

? Navigate to Organization Administration > Organizations > Organization Hierarchies.

? Select the Centralized Payments organization hierarchy.

? Click Edit > Insert.

? Add the Contoso Consulting FR legal entity.

? Save and Publish the hierarchy.

NEW QUESTION 202

HOTSPOT - (Topic 6)

You support custom functionality in Dynamics 365 Finance.

Your company requires that all solution be fully tested before they are deployed to production.

You need to use different testing types prior to deployment.

Which testing type should you use? To answer, select the appropriate options in the answer area

NOTE: Each correct selection is worm one point.

Answer Area

Requirement	Testing type
Isolate and test new features individually.	Unit
Test whether new features break existing capabilities.	Regression
Validate that multiple new features meet requirements.	Functional
Test whether new features break existing capabilities.	End to end
Validate that multiple new features meet requirements.	Unit
Test all components of the solution together.	Regression
Validate that multiple new features meet requirements.	Functional
Test all components of the solution together.	End to end
Validate that multiple new features meet requirements.	Unit
Test all components of the solution together.	Regression
	Functional
	End to end

- A. Mastered
- B. Not Mastered

Answer: A

Explanation:

Answer Area

Requirement	Testing type
Isolate and test new features individually.	Unit
Test whether new features break existing capabilities.	Regression
Validate that multiple new features meet requirements.	Functional
Test whether new features break existing capabilities.	End to end
Validate that multiple new features meet requirements.	Unit
Test all components of the solution together.	Regression
Validate that multiple new features meet requirements.	Functional
Test all components of the solution together.	End to end
Validate that multiple new features meet requirements.	Unit
Test all components of the solution together.	Regression
	Functional
	End to end

NEW QUESTION 203

- (Topic 6)

You set up Dynamics 365 for Finance and Operations. Your organization will use email with the application. You need to ensure that email will be sent using typical secure settings. What setting must be set up as specified?

- A. Specify if SSL is required is selected.
- B. Information rights management is enabled.
- C. In-place hold and Litigation hold are enabled.
- D. In-place eDiscovery is enabled.

Answer: A

Explanation:

SMTP settings tab.
On the Email parameters page, note the following settings on the SMTP settings tab.
Server information
SSL required - Determines whether secure transport is used. Typically, this is Yes, except for internal or troubleshooting scenarios.
Etc.
Reference: <https://docs.microsoft.com/en-us/dynamics365/fin-ops-core/fin-ops/organization-administration/configure-email>

NEW QUESTION 205

DRAG DROP - (Topic 6)

A company implements Dynamics 365 Finance. The company wants to automate some standard business practices and processes into the system. A sales representative calls on a new customer and obtains an order. As part of the process, the representative must follow the standard procedure for onboarding a new customer by uploading the customer's credit application to the company OneDrive for processing, create the new customer record, set a default minimum credit limit, and enter the new order using the company's streamlined new-customer form. After the credit application is approved by the finance manager, and the customer's credit limit is updated in the system, the order will be released for fulfilment. You need to determine which tool or functionality best fits the scenario. Which feature or functionality should you use? To answer, drag the appropriate setting to the correct drop targets. Each source may be used once, more than once, or not at all. You may need to drag the split bar between panes or scroll to view content. NOTE: Each correct selection is worth one point.

Features or functionalities	Answer Area	
	Scenario	Feature or functionality
Business process flow	Guide the salesperson through creating the new customer record and order.	
Workflow	Notify the finance manager of a new credit application by using email.	
Microsoft Flow	Automatically update the order status when the credit limit is updated.	
Task Guide		

- A. Mastered
B. Not Mastered

Answer: A

Explanation:

Features or functionalities	Answer Area	
	Scenario	Feature or functionality
Business process flow	Guide the salesperson through creating the new customer record and order.	Task Guide
Workflow	Notify the finance manager of a new credit application by using email.	Microsoft Flow
Microsoft Flow	Automatically update the order status when the credit limit is updated.	Workflow
Task Guide		

NEW QUESTION 210

SIMULATION - (Topic 6)

You are a functional consultant for Contoso Entertainment System USA (USMF). You plan to create several customer approval workflows. You need to configure the system to support customer approvals. To complete this task, sign in to the Dynamics 365 portal.

- A. Mastered
B. Not Mastered

Answer: A

Explanation:

- ? Navigate to Accounts receivable > Setup > Accounts receivable parameters.
- ? Click the General tab.
- ? Expand the Customer Approval section.
- ? Click the slider named Enable customer approvals to Yes.
- ? Select the entities for which you wish to enable customer approvals.

NEW QUESTION 215

SIMULATION - (Topic 6)

You are a functional consultant for Contoso Entertainment System USA (USMF). You plan to import the banking information of a new legal entity to USMF. You need to identify the format used in the bank account entity by creating an export job. The solution must use a Microsoft Excel data format. To validate your results, save the file in Microsoft Excel format to the Downloads\Bank folder. To complete this task, sign in to the Dynamics 365 portal.

- A. Mastered
B. Not Mastered

Answer: A

Explanation:

- ? Navigate to System Administration > Workspaces > Data management.
- ? Click the Framework parameters tile.
- ? In the Shared working directory field, enter C:\users\public\documents\ then click Validate.
- ? Click the Export tile.
- ? In the Name field, enter a name for the export job.
- ? In the Entity Name field, select the Bank Account entity.
- ? Click on Add entity.
- ? In the Target data format field, select EXCEL.
- ? Set the Skip staging option to No.
- ? Click the Add button.
- ? Click Export to begin the export.
- ? Click on Download package.
- ? Select the Downloads\Bank folder as the location to save the downloaded file.

NEW QUESTION 218

- (Topic 6)

You are a Dynamics 365 Finance system administrator.

Use's report that purchase order numbers are being generated in a non-continuous configuration Outing bulk purchase order creation.

You need :o determine how to improve performance.

Solution: Run the automatic cleanup of number sequences job Does the solution meet the goal?

- A. Yes
- B. No

Answer: B

NEW QUESTION 219

- (Topic 6)

You are implementing Dynamics 365 Supply Chain Management.

You must import data from a third-party system into Supply Chain Management. You need to import files by using the Data Management framework.

Which three files formats can you use? Each correct answer presents a complete solution. NOTE: Each correct selection is worth one point.

- A. .Zip
- B. .Clat
- C. .xml
- D. Microsoft Excel
- E. Pipe delimited

Answer: ACD

NEW QUESTION 221

DRAG DROP - (Topic 6)

You must migrate product data from a third-party database into Dynamics 365 Finance. The data includes units of measure and accounting currency.

You need to identify the data entity types.

What should use? To answer, drag the appropriate entity types to the correct data. Each entity type may be used once, more than once, or not at all. You may need to drag the split bar between panes or scroll to view content.

NOTE: Each correct selection is worth one point.

Entity types	Data	Entity types
Master		
Reference	Units of measure	
Parameter	Accounting currency	
Transaction		

- A. Mastered
- B. Not Mastered

Answer: A

Explanation:

Entity types	Data	Entity types
Master		
Reference	Units of measure	Reference
Parameter	Accounting currency	Parameter
Transaction		

NEW QUESTION 224

- (Topic 6)

You are implementing Dynamics 365 Supply Chain Management. You have a CSV file that contains two million records. You need to import the file into Dynamics 365 Supply Chain Management without manual manipulation of the data. What should you use?

- A. Microsoft Excel Add-In
- B. Microsoft SQL Server Integration Services

- C. Classic data integration
- D. Data management import job

Answer: D

NEW QUESTION 226

HOTSPOT - (Topic 6)

A company uses Dynamics 365 Finance.

You review business processes and their associated requirements. These work items include bugs, tasks backlog items, tests, and documents

You need to perform the following tasks:

- Track the progress of your implementation project and associate various work items with requirements and business processes
- Identify and publish bug fixes within your normal delivery schedule.

Which tools should you use? To answer, select the appropriate options in the answer area. NOTE Each correct selection is worth one point.

Requirements	Tools
Connect your business process maps to the recommended work management system.	<div>▼</div> <div>Business process modeler connected to Microsoft Azure DevOps</div> <div>Microsoft Visio connected to Microsoft Project Server</div> <div>Microsoft Visual Studio connected to Microsoft Github</div>
Create business process maps.	<div>▼</div> <div>Business process modeler</div> <div>Microsoft Visual Studio</div> <div>Microsoft Visio</div>
Manage progress and work items.	<div>▼</div> <div>Microsoft Github</div> <div>Microsoft Project Online</div> <div>Microsoft Azure DevOps</div>

- A. Mastered
- B. Not Mastered

Answer: A

Explanation:

Requirements	Tools
Connect your business process maps to the recommended work management system.	<div>▼</div> <div>Business process modeler connected to Microsoft Azure DevOps</div> <div>Microsoft Visio connected to Microsoft Project Server</div> <div>Microsoft Visual Studio connected to Microsoft Github</div>
Create business process maps.	<div>▼</div> <div>Business process modeler</div> <div>Microsoft Visual Studio</div> <div>Microsoft Visio</div>
Manage progress and work items.	<div>▼</div> <div>Microsoft Github</div> <div>Microsoft Project Online</div> <div>Microsoft Azure DevOps</div>

NEW QUESTION 231

- (Topic 6)

A client uses Dynamics 365 Finance.

You need to configure a workflow to allow users to approve or deny workflow tasks from outside the system.

What should you configure?

- A. a business event and a Microsoft PowerApps workflow
- B. a standard notification in workflows
- C. a standard date-based alert
- D. a business event a Microsoft Flow workflow
- E. a standard changed-based alert

Answer: D

NEW QUESTION 234

- (Topic 6)

Note: This question is part of a series of questions that present the same scenario. Each question in the series contains a unique solution that might meet the stated goals. Some question sets might have more than one correct solution, while others might not have a correct solution.

After you answer a question in this section, you will NOT be able to return to it. As a result, these questions will not appear in the review screen.

You are developing a file-based integration to Dynamics 365 for Finance and Operations. Microsoft Excel files with 15,000 or more records need to be imported into the system

periodically by individual users. The records need to be imported in full within a 5-minute approved window.

You need to determine how to accomplish the import into the system. Solution: Import the data by using the Excel Add-in.

Does the solution meet the goal?

- A. Yes
- B. No

Answer: B

Explanation:

References:

<https://docs.microsoft.com/en-us/dynamics365/fin-ops-core/dev-itpro/data-entities/integration-overview>

<https://docs.microsoft.com/en-us/dynamics365/fin-ops-core/dev-itpro/data-entities/data-management-api>

NEW QUESTION 235

- (Topic 6)

Note: This question is part of a series of questions that present the same scenario. Each question in the series contains a unique solution that might meet the stated goals. Some question sets might have more than one correct solution, while others might not have a correct solution.

After you answer a question in this section, you will NOT be able to return to it. As a result, these questions will not appear in the review screen.

You are a Dynamics 365 for Finance and Operations security administrator.

When testing security setups, users report that certain roles are gaining access to sensitive information via a form in the system.

You must investigate which user roles have what visibility and access level to system objects, and then send a report to the implementation team to address security compliance concerns.

You need to report the information from the system. Solution: Generate the Security role access report. Does the solution meet the goal?

- A. Yes
- B. No

Answer: A

Explanation:

Reference:

<https://docs.microsoft.com/en-us/dynamics365/fin-ops-core/dev-itpro/sysadmin/security-reports>

NEW QUESTION 236

SIMULATION - (Topic 6)

You are a functional consultant for Contoso Entertainment System USA (USMF).

A user named Inga is configured to approve purchase orders (POs) by using a workflow. You need to ensure that a user named Alicia can also approve POs by using a workflow. To complete this task, sign in to the Dynamics 365 portal.

- A. Mastered
- B. Not Mastered

Answer: A

Explanation:

? Navigate to the purchase order workflow.

? Edit the workflow.

? In the Workflow Editor, right-click on the Approval step and select Properties.

? Click on Assignment.

? Select User then select Alicia from the list of users.

? Save and activate the workflow.

NEW QUESTION 240

- (Topic 6)

Dynamics 365 Finance is implemented at your company.

Users in the accounts payable roles and inventory management roles can edit the general ledger details for all departments. These roles must not be able to change the inventory on hand or be able to pay a parts supplier. The users have physical access to warehouses.

You attempt to remove the users from the roles and see that the users are then added back to the roles.

Users must not be able to be added to both roles. Users in a single role must be able to perform their duties.

You need to ensure that users are assigned to the proper roles.

What are two possible ways to achieve this goal? Each correct answer presents a complete solution.

NOTE: Each correct selection is worth one point.

- A. Remove the privileges from the roles.
- B. Include the users in automatic assignment.
- C. Set up segregation of duties for the users.
- D. Remove segregation of duties for the users.
- E. Exclude the users from automatic assignment.

Answer: BC

Explanation:

B: To use anything other than common capabilities in finance and operations apps, users must be assigned to security roles. You can assign users to roles automatically, based on rules and business data, exclude users from automatic role assignment, or add users to roles manually.

C: You can set up rules to separate tasks that must be performed by different users. This concept is named segregation of duties.

Reference: <https://docs.microsoft.com/en-us/dynamics365/fin-ops-core/dev-itpro/sysadmin/tasks/assign-users-security-roles>

<https://docs.microsoft.com/en-us/dynamics365/fin-ops-core/dev-itpro/sysadmin/tasks/set-up-segregation-duties>

NEW QUESTION 243

HOTSPOT - (Topic 6)

A company is implementing case management in Dynamics 365 Supply Chain

Management.

The company has the following requirements:

? Create a simplified user interface to create new cases.

? Send a confirmation email after a case is submitted.

? Create a report to display case metrics.

You need to determine which technologies meet the requirements.

Which technologies should you use? To answer, select the appropriate options in the answer area.

NOTE: Each correct selection is worth one point.

Requirement	Technology
Create a simplified user interface to create new cases.	<div>Power Apps</div> <div>Power Automate</div> <div>Power BI</div> <div>Microsoft Dataverse</div>
Send a confirmation email after a case is submitted.	<div>Power Apps</div> <div>Power Automate</div> <div>Power BI</div> <div>Microsoft Dataverse</div>
Create a report to display case metrics.	<div>Power Automate</div> <div>Power BI</div> <div>Microsoft Dataverse</div>

- A. Mastered
B. Not Mastered

Answer: A

Explanation:

Box 1: Power Apps

Use Power Apps canvas apps for simple UI handling cases.

Box 2: Power Automate

You can customize emails for Power Automate flows.

Box 3: Power BI

Power BI can produce reports.

NEW QUESTION 244

DRAG DROP - (Topic 6)

A company uses Dynamics 365 Finance.

The Finance implementation must leverage multiple data sources.

You need to complete the configuration.

What should you use? To answer, drag the appropriate functionalities to the correct scenarios. Each functionality may be used once, more than once, or not at all.

You may need to drag the split bar between panes or scroll to view content.

NOTE: Each correct selection is worth one point.

Functionalities	Answer Area	Scenario	Functionality
BYOD		Export data to a data warehouse.	Functionality
Dual-write		Synchronize Dynamics 365 Finance and customer engagement apps.	Functionality
		Support offline data processing.	Functionality

- A. Mastered
B. Not Mastered

Answer: A

Explanation:

Functionalities	Answer Area	Scenario	Functionality
BYOD		Export data to a data warehouse.	BYOD
Dual-write		Synchronize Dynamics 365 Finance and customer engagement apps.	Dual-write
		Support offline data processing.	Dual-write

NEW QUESTION 245

- (Topic 6)

You assign security roles to users in a company.

New purchasing managers must be able to have a single role assigned to them to accomplish a tasks. The purchasing manager role has the following requirements;

- Must be standalone and not -impacted when another security role is changed.
- Must be able to view payment journals but not edit them.

The purchasing manager role does not currently have access to the payment journals. You need to edit the security configuration on to meet the requirements. What Should you do?

- Create a privilege for the read-only access for the payment journal tables.
- Assign an existing security role with read-only access to the payment journal as a sub role.
- Create a new security role for the payment journal, access,
- Create an Extension Data Security (XOS) policy and add the payment journal table as a constrained table.

Answer: C

NEW QUESTION 248

DRAG DROP - (Topic 6)

A company is implementing Dynamics 365 Finance and preparing for go-live. You need to thoroughly test the system.

Which tools should you use? To answer, drag the appropriate tools to the correct scenarios. Each tool may be used once, more than once, or not at all. You may need to drag the split bar between panes or scroll to view content.

NOTE: Each correct selection is worth one point.

Tools	Scenario	Tool
Business process modeler	A developer needs to test code.	
Data task automation	A procurement analyst needs to test the purchase order entry process.	
RSAT	A system engineer needs to test integration with a third-party warehouse solution.	
SysTest		

- Mastered
- Not Mastered

Answer: A

Explanation:

Tools	Scenario	Tool
Business process modeler	A developer needs to test code.	SysTest
Data task automation	A procurement analyst needs to test the purchase order entry process.	RSAT
RSAT	A system engineer needs to test integration with a third-party warehouse solution.	Data task automation
SysTest		

NEW QUESTION 250

- (Topic 6)

A company implements cymes 365 Finance on-premises. The company uses Microsoft Offer 2007.

The country/region address verifies a document originates must be included in the tower of Documents. Users must be able to edit the address for a document by using Microsoft Word Online.

You need to implement Busmen Document Management (BDM).

Which Two actions should you perform? Each correct answer present part of the solution

- Create a Power Automate cloud flow for each BDM template.
- Upgrade Office 2007 to Microsoft office 2019.
- Migrate the on-premises deployment to the cloud.
- Upgrade Office 2007 to Microsoft Office 365.
- Create a business process flow for each BDM template

Answer: AE

NEW QUESTION 252

- (Topic 6)

A company uses Dynamics 365 Finance. The company uses a number sequence named GenJmI_01 for general journal vouchers. The number sequence is configured as follows:

Configuration option	Value
Format	GNJL####
Smallest number allocation	1
Largest number allocation	9999
Next number allocation	10000
Allow user changes to a lower number	No
Allow user changes to a higher number	No

A user receives the following error message when creating a new general journal: Number sequence GenJrn_01 has been exceeded.

You need to update the configuration of the number sequence to resolve the error.

Which two actions should you perform? Each correct answer presents part of the solution.

NOTE: Each correct selection is worth one point.

- A. Update Allow user changes to a higher number to Yes.
- B. Update the number format to GNJL#####.
- C. Update the Next number allocation to 1.
- D. Update the Largest number allocation to 99999.
- E. Update the Smallest number allocation to 1000.

Answer: BD

Explanation:

When the number sequence in Dynamics AX has reached the highest number, an error message will occur, "number sequence has been exceeded." This can occur with any process done in Dynamics AX that uses a number sequence. The example below occurred when a sales order was trying to be confirmed. Due to the number sequence reaching the highest number, the system will not allow the sales order conformation to be completed.

To fix the issue, you will first need to look up the number sequence that will need to be changed.

- * 1. Go to Accounts receivables> Accounts Receivables Parameters
- * 2. Look for Conformation
- * 3. Right-click view details on number sequence code (Sales_31)
- * 4. Click edit
- * 5. Add another # in an alphanumeric segment that will extend the value field
- * 6. Add another 9 in the largest field
- * 7. Click edit again to save

Reference: <https://stoneridgesoftware.com/how-to-resolve-number-sequence-exceeded-error-in-dynamics-ax/>

NEW QUESTION 255

- (Topic 6)

You set up Dynamics 365 for Finance and Operations. Your organization will use email with the application.

You need to ensure that email will be sent using typical secure settings. What setting must be set as specified?

- A. In-place hold and Litigation hold are enabled.
- B. In-place eDiscovery is enabled,
- C. The SMTP port field is set to 587.
- D. Retention policies are enabled.

Answer: C

NEW QUESTION 256

- (Topic 6)

A hospital plans to deploy a new instance of Dynamics 365 Finance. New users are created regularly. You must add all employees as users of the system and assign the appropriate role to users. Employees who have the initials M.D. after their name must be added to the Medical Doctors role. You schedule the automatic role assignment batch job. You need to complete the role assignment. What should you do?

- A. Add a rule with a query to add employees with M.
- B. initials to the Medical Doctors role.
- C. Select a user who has M.
- D. in the nam
- E. Assign the Medical Doctors rol
- F. Repeat for each user.
- G. Configure segregation of duties for the M.
- H. roles.
- I. Create a role with extended data security and assign it to the M.
- J. employees.

Answer: A

NEW QUESTION 258

HOTSPOT - (Topic 6)

You are a Dynamics 365 for Finance and Operations system administrator. You create different workflows for Canada and the United States.

You must create a workflow that sends a notification to the North American workflow administrator with workflow comments in the notification.

You need to configure the workflows.

What option should you select for each scenario? To answer, select the appropriate options in the answer area.

NOTE: Each correct selection is worth one point.

Scenario	Option
Include a notification with workflow-specific data.	Notification texts Work item instructions Placeholders Line-item workflows
Run a different workflow for each region.	Condition Automatic action Parallel activity Automated task
Send an email to a group of users by role when a workflow task is rejected.	Workflow user Participant Queue

- A. Mastered
B. Not Mastered

Answer: A

Explanation:

Scenario	Option
Include a notification with workflow-specific data.	Notification texts Work item instructions Placeholders Line-item workflows
Run a different workflow for each region.	Condition Automatic action Parallel activity Automated task
Send an email to a group of users by role when a workflow task is rejected.	Workflow user Participant Queue

NEW QUESTION 262

DRAG DROP - (Topic 6)

You are planning to perform testing during an implementation of Dynamics 365 Finance. You need to identify the appropriate tools to support the testing. Which tools should you use? To answer, drag the appropriate tools to the correct requirements. Each tool may be used once, more than once, or not at all. You may need to drag the split bar between panes or scroll to view content.
NOTE: Each correct selection is worth one point.

Answer Area

Tools	Scenario	Tool
Business process modeler	A developer needs to test code.	
Data task automation	A procurement analyst needs to test the purchase order entry process.	
RSAT	A system engineer needs to test integration with a third-party warehouse solution.	
SysTest		

- A. Mastered
B. Not Mastered

Answer: A

Explanation:

Answer Area

Tools	Scenario	Tool
Business process modeler	A developer needs to test code.	SysTest
Data task automation	A procurement analyst needs to test the purchase order entry process.	RSAT
RSAT	A system engineer needs to test integration with a third-party warehouse solution.	Data task automation
SysTest		

NEW QUESTION 267

DRAG DROP - (Topic 6)

You are implementing Dynamics 365 Finance.

You must send notifications to internal users when a new fixed asset is created or approved and acquired.

You need to configure the system to meet the requirements.

Which features should you use? To answer, drag the appropriate features to the correct requirements. Each feature may be used once, more than once, or not at all. You may need to drag the split bar between panes or scroll to view content.

NOTE: Each correct selection is worth one point.

Features	Requirement	Feature
alert	Send a notification when a new fixed asset is created.	
electronic messaging	Send a notification when a new fixed asset is approved and acquired.	
workflow		

- A. Mastered
 B. Not Mastered

Answer: A

Explanation:

Features	Requirement	Feature
alert	Send a notification when a new fixed asset is created.	alert
electronic messaging	Send a notification when a new fixed asset is approved and acquired.	workflow
workflow		

NEW QUESTION 270

HOTSPOT - (Topic 6)

You need to implement new processes by using mobile apps.

Which mobile app should you use for each requirement? To answer, select the appropriate configuration in the answer area.

NOTE: Each correct selection is worth one point.

Requirement	App type
Create a mobile app that allows users to consistently create and modify data in a Finance and Operations app data entity through a business process flow component with a SiteMap to provide the navigation structure.	<div>▼</div> <div>Canvas</div> <div>Model-driven</div> <div>Xamarin</div> <div>Azure Web</div>
Embed a mobile app within a Dynamics 365 Finance form as an end user that uses a button to send emails with entity information.	<div>▼</div> <div>Canvas</div> <div>Model-driven</div>

- A. Mastered
 B. Not Mastered

Answer: A

Explanation:

Requirement	App type
Create a mobile app that allows users to consistently create and modify data in a Finance and Operations app data entity through a business process flow component with a SiteMap to provide the navigation structure.	<div>▼</div> <div>Canvas</div> <div>Model-driven</div> <div>Xamarin</div> <div>Azure Web</div>
Embed a mobile app within a Dynamics 365 Finance form as an end user that uses a button to send emails with entity information.	<div>▼</div> <div>Canvas</div> <div>Model-driven</div>

NEW QUESTION 275

- (Topic 6)

You are a Dynamics 365 for Finance and Operations systems administrator.

Your company needs to document and test all possible scenarios for a given implementation. Implementation gaps need to be documented using the tool available for tracking and linking to delivered extensions.

You need to identify the correct tool to accomplish this. What should you use?

- A. APQC Unified Libraries

- B. Shared asset library
- C. Business process modeler (BPM)
- D. Microsoft Azure DevOps

Answer: C

NEW QUESTION 276

- (Topic 6)

A company uses Dynamics 365 Finance. You configure a standard workflow for travel requisitions approvals. You configure the workflow which requires a single approver. You configure a pool of five managers to approve all travel requisitions. Managers must submit their own travel requisitions. A separate manager must approve the travel requisition. You need to ensure the system prevents managers from approving their own travel requisitions. What should you do?

- A. Create an escalation path for the Approve travel requisition step of the travel requisition workflow.
- B. Configure an activation condition on the travel requisition workflow to prevent activation for managers.
- C. Set the value of the Disallow approval by submitter option to Yes.
- D. Configure a condition to prevent the approval step from running when the originator is a manager.

Answer: C

Explanation:

Specify a final approver

You can designate a final approver for scenarios where the approver is the person who submitted the document for approval and the "disallow approval by submitter" is being used. Follow these steps to specify a final approver.

? In the workflow editor, right-click the approval element, and then select Properties to open the Properties form.

? In the left pane, click Advanced settings.

? Select the Use final approver check box.

? In the list, select a user to be the final approver.

Reference: <https://learn.microsoft.com/en-us/dynamics365/fin-ops-core/fin-ops/organization-administration/configure-approval-process-workflow>

<https://learn.microsoft.com/en-us/dynamics365/fin-ops-core/fin-ops/organization-administration/configure-approval-step-workflow>

NEW QUESTION 277

- (Topic 6)

You manage a Dynamic 365 Finance environment. Users report slow queries, deadlocks, and crashes. You need identify which tool to use to troubleshoot. What should you use?

- A. System diagnostics
- B. DirectQuery
- C. Microsoft Azure Active Directory Connect Health Agent
- D. Environment monitoring

Answer: D

NEW QUESTION 278

DRAG DROP - (Topic 6)

You are integrating Dynamic 365 Supply chain Management with data from external system.

You need to select component for various integration scenarios.

Which component should you use? To answer, drag the appropriate components to the correct scenario. Each component may be used once, more than once, or not at all. You need to drag the split bar between panes or scroll to view content.

Components

Data entities only

Composite data entities only

Data entities and composite data entities

Answer Area

Scenario	Component
Implement synchronous OData integration.	Component
Implement batched data integration.	Component
Include header and line data in a single XML document.	Component
Implement the Microsoft Excel Data Connector add-in.	Component

- A. Mastered
- B. Not Mastered

Answer: A

Explanation:

Components

Data entities only

Composite data entities only

Data entities and composite data entities

Answer Area

Scenario	Component
Implement synchronous OData integration.	Data entities only
Implement batched data integration.	Data entities only
Include header and line data in a single XML document.	Composite data entities only
Implement the Microsoft Excel Data Connector add-in.	Data entities only

NEW QUESTION 280

HOTSPOT - (Topic 6)

You are a consultant and set up Dynamics 365 for Finance and Operations for local and multinational companies.

You need to establish policy rules for purchasing.

What policy frameworks should you implement for each scenario? To answer, the appropriate options in the answer area.

NOTE: Each correct selection is worth one point.

Scenario	Policy framework
A company is established in the US and Canada. Ensure that employees in the US and Canada buy from different catalogs and vendors.	<div>Purchasing policies are set up at the legal-entity level</div> <div>Purchasing policies are set up at the organizational level</div>
For a large multinational company, ensure that department and global purchasing controls apply to sales users in the UK.	<div>Purchasing policies are set up at the legal-entity level</div> <div>Purchasing policies are set up at the organizational level</div>
Ensure that a specific user can access only the Tools category when the user creates purchase requisitions.	<div>Catalog policy rule</div> <div>Category policy rule</div> <div>Category access policy rule</div>
Ensure that a specific user can access only a subset of vendors for the Tools category.	<div>Catalog policy rule</div> <div>Category policy rule</div> <div>Category access policy rule</div>

- A. Mastered
 B. Not Mastered

Answer: A

Explanation:

References:

<https://docs.microsoft.com/en-us/dynamics365/unified-operations/supply-chain/procurement/purchase-policies>

NEW QUESTION 283

DRAG DROP - (Topic 6)

You are configuring the address books for a company's accounts receivable, accounts payable, and retail operations.

You need to configure the appropriate address books to meet various requirements. Which address book should you use for each scenario? To answer, drag the appropriate

address book objects to the correct scenarios. Each address book object may be used

once, more than once, or not at all. You may need to drag the split bar between panes or scroll to view content.

NOTE: Each correct selection is worth one point.

Address Book Object	Answer Area	Address Book Object
employee	<p>Scenario</p> <p>Restrict account visibility for a given retail channel transaction.</p> <p>Create an address for a vendor.</p> <p>Link workers to retail locations.</p> <p>Create an address for a prospect.</p>	Address Book Object
global		Address Book Object
customer		Address Book Object
contact		Address Book Object

- A. Mastered
 B. Not Mastered

Answer: A

Explanation:

Address Book Object	Answer Area	Address Book Object
employee	<p>Scenario</p> <p>Restrict account visibility for a given retail channel transaction.</p> <p>Create an address for a vendor.</p> <p>Link workers to retail locations.</p> <p>Create an address for a prospect.</p>	customer
global		global
customer		employee
contact		contact

NEW QUESTION 285

DRAG DROP - (Topic 6)

You are a Dynamics 365 for Finance and Operations system administrator.

Users have been creating advanced queries for filter data on forms. They want to be able to save the filter data for later use and access those views when they log in.
You need to instruct them in how to do this.
Which four actions should end users perform in sequence? To answer, move the appropriate actions from the list of actions to the answer area and arrange them in the correct order.

Actions

Select the saved query.

Click Save as filter.

Click Configure.

Filter the data in the grid via the advanced filter.

Right-click and select Personalize this form.

Click Options, and then select Add to workspace.

Select the workspace and presentation.

Add the All Customers form to favorites.

Answer Area

>

<

>

<

- A. Mastered
- B. Not Mastered

Answer: A

Explanation:

Actions

Select the saved query.

Click Save as filter.

Click Configure.

Filter the data in the grid via the advanced filter.

Right-click and select Personalize this form.

Click Options, and then select Add to workspace.

Select the workspace and presentation.

Add the All Customers form to favorites.

Answer Area

Filter the data in the grid via the advanced filter.

Click Options, and then select Add to workspace.

Select the workspace and presentation.

Click Configure.

>

<

>

<

NEW QUESTION 286

HOTSPOT - (Topic 6)

You integrate Lifecycle Service (LCS) with Azure DevOps to test a Dynamic 365 Finance implementation. Two new features have been implemented. You have uploaded five recordings for each feature to LCS. Testing of the new features will be completed independently. You must use the least number of artifacts possible.
You need configure Azure DevOps to perform the tests for the new features.
Which test construct should you configure? To answer, select the appropriate options in the answer area.
NOTE: Each correct selection is worth one point.

Test construct

Test plans

Quantity

1

2

10

Test suites

1

2

10

- A. Mastered
- B. Not Mastered

Answer: A

Explanation:

Box 1: 2
Test plans contain test suites.
In Azure DevOps, you will first create your Test Plan and then you will create your Test Suites inside of it.
Box 2: 10
A Test Suite is a collection of Test Cases.

NEW QUESTION 288

HOTSPOT - (Topic 6)

A company that has two legal entities is implementing Dynamics 365 finance.

You need to ensure that the company can view the following business information:

- Information about the user that posts a journal transaction.
- Intercompany transaction between the two legal entities.

Which features should you implement? To answer, select the appropriate options in the NOTE: Each correct selection is worth one point.

Answer Area

Business information	Feature
Information about the user that posts a journal transaction.	Audit trail Audit bench Users Voucher transactions
Intercompany transactions between the two legal entities.	Accounting source explorer Original document Related vouchers
Intercompany transactions between the two legal entities.	

- A. Mastered
B. Not Mastered

Answer: A

Explanation:

Answer Area

Business information	Feature
Information about the user that posts a journal transaction.	Audit trail Audit bench Users Voucher transactions
Intercompany transactions between the two legal entities.	Accounting source explorer Original document Related vouchers
Intercompany transactions between the two legal entities.	

NEW QUESTION 293

SIMULATION - (Topic 6)

You are a functional consultant for Contoso Entertainment System USA (USMF).

You need to export a list of all the contacts of USMF to an XLS file. The file must be saved to the Downloads folder.

To complete this task, sign in to the Dynamics 365 portal.

- A. Mastered
B. Not Mastered

Answer: A

Explanation:

- ? Navigate to System Administration > Workspaces > Data management.
- ? Click the Framework parameters tile.
- ? In the Shared working directory field, enter C:\users\public\documents\ then click Validate.
- ? Click the Export tile.
- ? In the Name field, enter a name for the export job.
- ? In the Entity Name field, select the Contact entity.
- ? Click on Add entity.
- ? In the Target data format field, select EXCEL.
- ? Set the Skip staging option to No.
- ? Click the Add button.
- ? Click Export to begin the export.
- ? Click on Download package.
- ? Select the Downloads folder as the location to save the downloaded file.

NEW QUESTION 294

DRAG DROP - (Topic 6)

You are implementing Dynamics 365 Finance.

You use Business process modeler to capture the business process. You integrate Lifecycle Services with Task Recorder, Microsoft Azure DevOps, and Test Runner to perform end-to-end testing of new features.

You need to perform testing.

Which testing tools should you use? To answer, drag the appropriate testing tools to the correct requirements. Each testing tool may be used once, more than once, or not at all. You may need to drag the split bar between panes or scroll to view content.

Testing tools

Azure DevOps

Business process modeler

Task Recorder

Test Runner

Answer Area

Requirement

Capture test cases into AXTR files.

Associate test cases with Use Case diagrams.

Create a test plan and test suites.

Manage automated test cases.

Testing tool

Testing tool

Testing tool

Testing tool

Testing tool

- A. Mastered
B. Not Mastered

Answer: A

Explanation:

Testing tools

Azure DevOps

Business process modeler

Task Recorder

Test Runner

Answer Area

Requirement

Capture test cases into AXTR files.

Associate test cases with Use Case diagrams.

Create a test plan and test suites.

Manage automated test cases.

Testing tool

Task Recorder

Business process modeler

Azure DevOps

Azure DevOps

Test Runner

NEW QUESTION 296

- (Topic 6)

You have the following Dynamics 365 Finance instances:

Instance	Comments
1	Contains configuration data for a company named CompanyA
2	Contains a blank setup for a company named CompanyB

You must copy the configuration data from CompanyA to CompanyB. Solution: Use dual-write to copy the configuration data. Does the solution meet the goal?

- A. Yes
B. No

Answer: B

Explanation:

Reference:

<https://docs.microsoft.com/en-us/dynamics365/fin-ops-core/dev-itpro/data-entities/copy-configuration>

NEW QUESTION 301

- (Topic 6)

You are a Dynamics 365 for Finance and Operations system administrator.

You have 50 identified purchase order numbers that are not used in the system and are not being recycled. Why they are missing is unknown. Purchasing operations is currently operating around the clock and no downtime can occur.

You need to use the missing numbers in the system. What should you do?

- A. Run the Number sequence wizard for the purchase order number sequence.
B. Change the number sequence to manual, then manually assign the number sequences to the new purchase orders.
C. Change the number sequence to continuous and create the new purchase orders.
D. Run Automatic cleanup of number sequence and create the new purchase orders.
E. Change the number sequence to non-continuous and create the new purchase orders.

Answer: D

NEW QUESTION 305

- (Topic 6)

A company is preparing for go-live with Dynamics 365 Finance. The company plans to test the sales order process.

You need to ensure that a delivery note is generated for each sales order created. What should you use?

- A. Chain test case
B. Derived test case
C. SysTest
D. Data task automation

Answer: B

NEW QUESTION 310

- (Topic 6)

You plan the migration from Dynamics AX 2012 R3 to a Dynamics 365 for Finance and Operations environment. You will be using Lifecycle Services (LCS) and the tools provided with it.

You need to clean up data, review and configure SQL optimizations, and identify deprecated features in your code. What tool should you use?

- A. Microsoft Azure DevOps
- B. Upgrade analyzer
- C. Data Import/Export Framework (DIXF)
- D. Code upgrade estimation tools

Answer: B

NEW QUESTION 312

- (Topic 6)

You develop a new purchasing solution for a Dynamics 365 for Finance and Operations environment.

You must provide functional test passes for the purchasing solution.

You need to plan a production environment test flow for the purchasing solution.

What three steps should you verify in the functional passes of the purchasing solution?

- A. Purchase orders are generated
- B. Item requirements are present
- C. Production order processing occurs
- D. Production orders are generated
- E. The item master is designed and released to a legal entity

Answer: ABE

NEW QUESTION 314

- (Topic 6)

You are a Dynamics 365 for Finance and Operations systems administrator.

Microsoft recently released a new feature for public preview that would add significant value to your organization without licensing adjustments.

You need to enable the feature.

Where can you enable the preview feature?

- A. Solution management
- B. Lifecycle Services
- C. Organizational administration module
- D. experience.dynamics.com
- E. System administration module

Answer: B

Explanation:

References:

<https://docs.microsoft.com/en-us/dynamics365/fin-ops-core/fin-ops/get-started/public-preview-releases>

NEW QUESTION 315

- (Topic 6)

A company is implementing Dynamic 365 Finance.

You apply an update. After you test the update, you find that the delivery dates on some sales orders occur in the past. You identify data conflicts on the test results.

You need to ensure that the delivery date value is equal to or greater than the current data in future automated testing .

Which two options could you configure? Each answer present a complete solution. NOTE: Each correct selection is worth one point.

- A. Task Recorder sub-task
- B. Task Recorder developer placeholder
- C. Operators for validation
- D. Current value

Answer: CD

Explanation:

Reference:

<https://docs.microsoft.com/en-us/dynamics365/fin-ops-core/dev-itpro/perf-test/rsat/rsat- validate-expected>

NEW QUESTION 316

- (Topic 6)

You are a Dynamics 365 for Finance and Operations system administrator.

A user is reporting an issue with the Sales Order form. The UI for the form is not loading properly, and there

are some performance issues. The object was working fine until the most recent update release. The user has personalized this form, is using Microsoft Internet Explorer 11, and no other users are reporting issues.

You need to resolve the issue. What should you do?

- A. Export, delete, then reimport the usage data for the sales form object.
- B. Disable and then re-enable the user.
- C. Reset all the usage data for the user.
- D. Reimport and compile the AOT object causing issues.

Answer: C

NEW QUESTION 317

DRAG DROP - (Topic 6)

A company needs test scripts that can be leveraged by the Regression Suite Automated Testing (RSAT) tool. Several users are creating their test cases and

sending the files to you to upload.

You need to create these scripts and link them to the RSAT tool.

Which three actions should you perform in sequence? To answer, move the appropriate actions from the list of actions to the answer area and arrange them in the correct order.

Actions

Create a BPM library and upload XML task recorder files.

Create a BPM library and upload AXTR task recorder files.

Create test suite scripts in Microsoft Azure DevOps.

Sync to Microsoft Azure DevOps.

Answer Area



- A. Mastered
- B. Not Mastered

Answer: A

Explanation:

References:

<https://docs.microsoft.com/en-us/dynamics365/fin-ops-core/dev-itpro/lifecycle-services/using-task-guides-and-bpm-to-create-user-acceptance-tests>

<https://docs.microsoft.com/en-us/dynamics365/fin-ops-core/fin-ops/get-started/hol-set-up-regression-suite-automation-tool>

NEW QUESTION 320

SIMULATION - (Topic 6)

You are a functional consultant for Contoso Entertainment System USA (USMF). You recently configured all the sales taxes of USMF.

You need to validate the sales taxes by creating a sales order. The sales order must contain the following information:

? Customer: Contoso Retail Los Angeles

? Product: T0001

? Quantity: 1

? Size: 10

To validate your result, create a proforma invoice for the sales order and save the invoice in Microsoft Excel format to the Downloads\Sales folder.

To complete this task, sign in to the Dynamics 365 portal.

- A. Mastered
- B. Not Mastered

Answer: A

Explanation:

You need to create a sales order then create a proforma invoice for the sales order.

Create the sales order:

? Go to Navigation pane > Modules > Accounts Receivable > Sales orders > All sales orders.

? Select New.

? In the Customer account field, select the drop-down button to open the lookup.

? In the list, find and select the customer record for Contoso Retail Los Angeles.

? Select OK.

? Under the Sales order lines section, select the Sales order line.

? In the Item number field, select the drop-down button to open the lookup.

? Select item T0001.

? If the Size dimension is not displayed, click on Sales order line > Display > Dimensions.

? Select the Size dimension.

? Click OK.

? In the Size field, select the drop-down button to open the lookup.

? Select Size 10.

? In the Quantity field, enter 1.

? Click on the Sell tab.

? Under Generate, select Confirm sales order.

? Click OK.

Create the proforma invoice:

? On the sales order page, click on the Invoice tab.

? Under Generate, select Pro forma invoice.

? Set the Print invoice option to Yes.

? Click OK.

? Click on Export.

? Save the invoice in Microsoft Excel format to the Downloads\Sales folder

NEW QUESTION 325

- (Topic 6)

A company is implementing Dynamics 365 Finance. The company uses 2 third-party applications.

The first application is used for sales taxes and must have current tax data present for sales order entry.

The second application is used for exchange rates and must have current daily exchange rates available for reference within Dynamics 365 Finance.

You need to ensure that the third-party applications work with Dynamics 365 Finance. Which test type should you use?

- A. Integration
- B. Regression
- C. Performance
- D. Functional

Answer: A

Explanation:

Toolkit Overview: RSAT Integration Testing

RSAT (regression suite automation tool) will get a new improvement where our RSAT tool should be able to support an end-to-end integration scenario. It will allow run sessions for third-party applications that run before or after Finance and Supply Chain Management is run. Essentially, you will be able to trigger an integration in some portal and then verify the outcomes in Finance and Supply Chain Management. It's the same as if you were doing with the C# NUnit framework and selenium WebDrivers, although, in this case, you likely won't require coding. The main idea is to be able to do integration scenario testing and be able to do that without developer help. Since development can be expensive it's not something that customers really aim to do. We will get this feature in general availability and in public preview within the next few months, so stay tuned and follow the latest Microsoft improvements so you don't miss out!

Reference: <https://companial.com/blog/how-to-automate-integration-testing-in-microsoft-dynamics-365-fscm/>

NEW QUESTION 330

HOTSPOT - (Topic 6)

You are configuring a new Dynamics 365 app deployment for a company. The company has the following requirements:

? Create a rewards program for customers.

? Manage long-term relationships with customers through clienteling.

? Manage customer ledger entries to reconcile payments.

You need to select the appropriate app to use.

Which app should you use? To answer, select the appropriate options in the answer area.

NOTE: Each correct selection is worth one point.

Answer Area

Requirement

Create a rewards program for customers.

Manage long-term relationships with customers.

Manage customer ledger entries to reconcile payments.

App

App
<div> <input type="text"/> </div> <div> Dynamics 365 Finance Dynamics 365 Supply Chain Management Dynamics 365 Project Operations Dynamics 365 Commerce </div>
<div> <input type="text"/> </div> <div> Dynamics 365 Finance Dynamics 365 Supply Chain Management Dynamics 365 Project Operations Dynamics 365 Commerce </div>
<div> <input type="text"/> </div> <div> Dynamics 365 Finance Dynamics 365 Supply Chain Management Dynamics 365 Project Operations Dynamics 365 Commerce </div>

- A. Mastered
- B. Not Mastered

Answer: A

Explanation:

Box 1: Dynamics 365 Commerce

Loyalty programs can help increase customer loyalty by rewarding customers for their interactions with the retailer's brand. In Dynamics 365 Commerce, you can set up simple or complex loyalty programs that apply across your legal entities in any commerce channel.

You can set up your loyalty program so that they include the following options.

* Set up multiple types of rewards that you offer in your loyalty programs, and track participation in your loyalty programs.

* Etc.

Box 2: Dynamics 365 Commerce

You can manage clienteling in Dynamics 365 Commerce.

Clienteling empowers sales associates to become trusted advisors and establish long-term relationships with their customers. Dynamics 365 Customer Insights helps organizations to gather disparate data, be it from transactional, observational, or behavioral sources, to gain a unified view of customers, and derive intelligent insights that drive key business processes.

Box 3: Dynamics 365 Finance

Use Dynamics 365 Finance to manage customer ledger entries to reconcile payments

NEW QUESTION 333

FILL IN THE BLANK - (Topic 6)

Note: This question is part of a series of questions that present the same scenario. Each question in the series contains a unique solution. Determine whether the solution meets the stated goals. Some question sets might have more than one correct solution, while others might not have a correct solution. After you answer a question in this section, you will NOT be able to return to it. As a result, these questions will not appear in the review screen. A company is implementing Dynamics 365 Finance. The company has two legal entities in two different regions requiring separate tenants. CompanyA and CompanyB are both implementing Dynamics 365 Finance as separate implementation teams in a staggered approach. CompanyA and CompanyB want to ensure that assets are accessible across the companies and to Microsoft but will not be publicly accessible to other companies. You need to determine how to set up and configure assets to the Lifecycle Services (LCS) Asset library. Solution: Create a shared asset library in LCS. Does the solution meet the goal?

- A. Yes
- B. No

Answer: A

NEW QUESTION 336

- (Topic 6)

You are implementing Dynamics 365 Supply Chain Management.

New sales orders must be evaluated every hour. Warehouse operations managers must be sent an email alert to include new sales orders. The solution must not include custom code development.

You need to use a Power Platform product to implement the solution. Which product should you use?

- A. Power Virtual Agents
- B. Power Automate
- C. Power Apps
- D. Power BI

Answer: D

NEW QUESTION 337

SIMULATION - (Topic 6)

You are a functional consultant for Contoso Entertainment System USA (USMF).

You need to create an email template for the users in the sales department and marketing department. The template must meet the following requirements:

? Be named Statement email

? Have a subject of Product information

? Include the name of the email recipient in the body of the message

The solution must ensure that the template can be used by the users in the sales and marketing departments as quickly as possible.

To complete this task, sign in to the Dynamics 365 portal.

- A. Mastered
- B. Not Mastered

Answer: A

Explanation:

? Navigate to Settings > Templates > Email templates.

? On the Actions toolbar, select New.

? On the Email Templates form, enter Statement email for the title.

? Enter Product information in the subject field.

? To insert data fields to display information such as a customer's name

select Insert/Update, and then in the Data Field Values dialog box, select Add.

? In the Add Data Value dialog box, select User for the Record type and First Name for the Field value, and then select OK.

? Select OK again to insert the data.

? Select Insert/Update, and then in the Data Field Values dialog box, select Add.

? In the Add Data Value dialog box, select User for the Record type and Last Name for the Field value, and then select OK.

? Select OK again to insert the data.

? Select Save or Save and Close.

NEW QUESTION 341

- (Topic 6)

You develop a Power Apps app that allows users to upload images. The app automatically resizes images and adds metadata tags to uploaded images.

The app must automatically tag images of checks within Dynamics 365 Finance. You must enable access to the Power App from Finance and pass a variable to indicate context to the app. Pop-up blockers are enabled on all user devices.

You need to configure the app.

What are two possible ways to achieve the goal? Each correct answer presents a complete solution.

NOTE: Each correct selection is worth one point.

- A. Add the app by using the Power Apps button on the standard Action pane.
- B. Use JavaScript to open a modeless dialo
- C. Pass the context with a querystring value.
- D. Use JavaScript to open a new modal dialo
- E. Pass the context with a querystring value.
- F. Embed the app on a page as a FastTab.
- G. Create a Power Automate flow that sends an email with a link to open the app.

Answer: AD

Explanation:

Reference:

<https://docs.microsoft.com/en-us/dynamics365/fin-ops-core/fin-ops/get-started/embed-power-apps?toc=/dynamics365/commerce/toc.json>

NEW QUESTION 345

- (Topic 6)

Note: This question is part of a series of questions that present the same scenario. Each question in the series contains a unique solution that might meet the stated goals. Some question sets might have more than one correct solution, while others might not have a correct solution.

After you answer a question in this section, you will NOT be able to return to it. As a result, these questions will not appear in the review screen.

You are developing a file-based integration to Dynamics 365 for Finance and Operations. Microsoft Excel files with 15,000 or more records need to be imported into the system

periodically by individual users. The records need to be imported in full within a 5-minute approved window.

You need to determine how to accomplish the import into the system.

Solution: Import the data by using the Data Management Framework's package API. Does the solution meet the goal?

- A. Yes
- B. No

Answer: B

Explanation:

References:

<https://docs.microsoft.com/en-us/dynamics365/fin-ops-core/dev-itpro/data-entities/integration-overview>

<https://docs.microsoft.com/en-us/dynamics365/fin-ops-core/dev-itpro/data-entities/data-management-api>

NEW QUESTION 348

- (Topic 6)

You are the administrator of a Dynamic 365 Finance system.

Messages sent from the system exceed the sending limits of the Microsoft 365 Exchange Online service.

You need to prevent sending limits from being exceeded. What should you configure?

- A. Attachment size limits
- B. Email throttling
- C. Email distributor batch job
- D. Throttling priority mappings

Answer: B

Explanation:

The email throttling feature allows noninteractive email providers to adhere to a per-minute email sending limit, which prevents errors that are currently triggered when the system attempts to send more emails than the provider can handle. When email throttling is enabled, sending limits for Microsoft 365 email providers will be set automatically; manual configuration is required for all other email providers.

Reference: <https://docs.microsoft.com/en-us/dynamics365-release-plan/2020wave2/finance-operations/finance-operations-crossapp-capabilities/email-throttling>

NEW QUESTION 352

HOTSPOT - (Topic 4)

You need to design the street team mobile application for creating sales orders in the mobile application.

Which technologies should you use? To answer, select the appropriate options in the answer area.

NOTE: Each correct selection is worth one point.

Requirement

Technology

Store product information for use in the mobile application.

	▼
Common Data Service	
Dynamics 365 Supply Chain Management	
Mobile App SQL lite database	
Power Apps	

Integrate sales orders from the mobile app to Dynamics 365.

	▼
Common Data Service	
Dual-write	
Virtual Entities	
Data Integration APIs	

- A. Mastered
- B. Not Mastered

Answer: A

Explanation:

Requirement	Technology
Store product information for use in the mobile application.	<div>▼</div> <div>Common Data Service</div> <div>Dynamics 365 Supply Chain Management</div> <div>Mobile App SQL lite database</div> <div>Power Apps</div>
Integrate sales orders from the mobile app to Dynamics 365.	<div>▼</div> <div>Common Data Service</div> <div>Dual-write</div> <div>Virtual Entities</div> <div>Data Integration APIs</div>

NEW QUESTION 355

- (Topic 4)

You need to load the data for the environment refresh activities. Which location should you use?

- A. Microsoft SharePoint
- B. Microsoft Azure Data Lake
- C. Dynamics 365
- D. Microsoft Azure DevOps
- E. Project-level asset library

Answer: C

Explanation:

Reference:

<https://docs.microsoft.com/en-us/dynamics365/fin-ops-core/dev-itpro/data-entities/data-entities-data-packages>

NEW QUESTION 359

DRAG DROP - (Topic 4)

You need to identify which Microsoft features will accomplish the actions.

Which features should you use? To answer, drag the appropriate features to the correct actions. Each feature may be used once, more than once, or not at all.

You may need to drag the split bar between panes or scroll to view content.

NOTE: Each correct selection is worth one point.

Answer Area

Actions	Action	Feature
OData		
Dual-write	Enable the street sales team to respond to inquiries on products.	
Business Events	Use the street team mobile application for sales order creation.	
Power Automate		

- A. Mastered
- B. Not Mastered

Answer: A

Explanation:

Answer Area

Actions	Action	Feature
<div>OData</div> <div>Dual-write</div> <div>Business Events</div> <div>Power Automate</div>	<p>Enable the street sales team to respond to inquiries on products.</p> <p>Use the street team mobile application for sales order creation.</p>	<div>Business Events</div> <div>Power Automate</div>

NEW QUESTION 361

- (Topic 3)

You need to troubleshoot the source of and reason for the errors reported by the sales representatives. Which tool should you use?

- A. Alert Service
- B. System diagnostics
- C. Environment History
- D. Microsoft Azure Virtual Machine
- E. Azure Monitor

Answer: C

NEW QUESTION 366

- (Topic 3)

You need to determine the different entities that sales managers can use to import data into an initial Excel template. What are two possible ways to achieve this goal? Each correct answer presents a complete solution. NOTE: Each correct selection is worth one point

- A. Explore the Dynamics 365 database schema
- B. Explore the Data distribution framework jobs.
- C. Explore the Excel Workbook Designer records.
- D. Explore the data entities in the Data Management Workspace.

Answer: BD

NEW QUESTION 367

- (Topic 3)

You need to enable the sales managers to consistently import their prospects. Which tool should you configure?

- A. Data Management Workspace
- B. Power Automate
- C. Configuration data packages
- D. Power App portals
- E. Excel desktop application Dynamics add-in

Answer: A

Explanation:

Reference:

<https://docs.microsoft.com/en-us/dynamics365/fin-ops-core/dev-itpro/data-entities/data-entities-data-packages>

NEW QUESTION 369

- (Topic 3)

You need to resolve the form personalization issues. What should you do?

- A. Clear the sales associate users' browser cache and site settings for the Dynamics 365 instance.
- B. Disable and then re-enable the sales associate users.
- C. Clear the personalization for each form.
- D. Reset all usage data.
- E. Redeploy the form.

Answer: C

NEW QUESTION 373

- (Topic 2)

You need to configure the system to meet the workflow requirements. What should you use?

- A. Document Management Notes and Power Automate

- B. Power Automate and workflow
- C. Vendor Score Cards and Power Automate
- D. Case Management and workflows

Answer: C

NEW QUESTION 377

- (Topic 2)

You need to configure the system to meet the data import, export, and operations requirements.

Which two options should you implement? Each correct answer presents part of the solution.

NOTE: Each correct selection is worth one point.

- A. Document templates
- B. Electronic reporting
- C. REST APIs
- D. Excel Add-in data source
- E. Application Integration Framework

Answer: AD

NEW QUESTION 378

- (Topic 2)

You need to determine the root cause for the regional manager's issue. What is the root cause?

- A. The sales order was not created.
- B. The user does not have the proper permissions.
- C. There is a filter on the grid.
- D. The user is in the wrong environment.

Answer: D

NEW QUESTION 381

- (Topic 2)

You need to ensure that Liberty's can use the business processes from Contoso, Ltd. What should you do?

- A. Import the specific BPM library into the appropriate sub-node as a child.
- B. Create a reference to the BPM library into the appropriate sub-node as a sibling.
- C. Create a reference to the BPM library into the appropriate sub-node as a child.
- D. Import the specific BPM library into the appropriate sub-node as a sibling.

Answer: C

NEW QUESTION 383

HOTSPOT - (Topic 2)

You need to configure integration with Excel.

How should you complete the configuration? To answer, select the appropriate options in the answer area.

NOT: Each correct selection is worth one point.

Answer Area

Requirement	Location
Link the Excel add-in to the Dynamics 365 instance.	<div><div>https://LibertysAos.cloudax.dynamics.com</div><div>https://Libertys-my.sharepoint.com</div><div>https://Libertys.visualstudio.com</div><div>https://Libertys.sharepoint.com</div></div>
Centrally store the finished templates.	<div><div>Dynamics 365</div><div>Visual Studio</div><div>OneDrive for Business</div></div>

- A. Mastered
- B. Not Mastered

Answer: A

Explanation:

Answer Area

Requirement	Location
Link the Excel add-in to the Dynamics 365 instance.	<div><div>https://LibertysAos.cloudax.dynamics.com</div><div>https://Libertys-my.sharepoint.com</div><div>https://Libertys.visualstudio.com</div><div>https://Libertys.sharepoint.com</div></div>
Centrally store the finished templates.	<div><div>Dynamics 365</div><div>Visual Studio</div><div>OneDrive for Business</div></div>

NEW QUESTION 387

DRAG DROP - (Topic 2)

You need to configure regression testing and user notification processes for updates.

What should you use? To answer, drag the appropriate tools or apps to the correct scenarios. Each tool or app may be used once, more than once, or not at all. You may need to drag the split bar between panes or scroll to view content.
NOTE: Each correct selection is worth one point.

Tools or apps

Lifecycle Services

Dynamics 365 application

Azure DevOps

Power Automate

Answer Area

Scenario	Tool or app
Generate application blackout notifications.	Tool or app
Regression test all user acceptance tests.	Tool or app

- A. Mastered
- B. Not Mastered

Answer: A

Explanation:

Tools or apps

Lifecycle Services

Dynamics 365 application

Azure DevOps

Power Automate

Answer Area

Scenario	Tool or app
Generate application blackout notifications.	Lifecycle Services
Regression test all user acceptance tests.	Azure DevOps

NEW QUESTION 388

- (Topic 2)
You need to recommend a solution to meet the regional managers workspace reporting requirements.
What should you use?

- A. Record Grid
- B. inquiry form
- C. Power Apps
- D. Power BI

Answer: C

NEW QUESTION 392

HOTSPOT - (Topic 2)
You need to identity the risk points that ate present one week poor to go live.
Which risk points should you discuss? To answer, select the appropriate options in the answer area.
NOTE Each correct selection is worth one point.

Answer Area

Action	Risk
Receive Production environment instance from Microsoft.	Passing the FastTrack Go Live checklist Data conversion processing time will exceed the planned time window Installing the Dynamics client on the end users computers
Migrate release-configuration database to production.	Receive the production environment instance Properly sizing the application server Cutover activities for migrating data into the new database

- A. Mastered
- B. Not Mastered

Answer: A

Explanation:

Answer Area

Action	Risk
Receive Production environment instance from Microsoft.	Passing the FastTrack Go Live checklist Data conversion processing time will exceed the planned time window Installing the Dynamics client on the end users computers
Migrate release-configuration database to production.	Receive the production environment instance Properly sizing the application server Cutover activities for migrating data into the new database

NEW QUESTION 394

- (Topic 1)
You need to resolve the contact reassignment issue. What should you search by?

- A. name in the customer master
- B. contact address in the global address book
- C. email address in the person search report
- D. user ID in the global address book
- E. email in the customer and vendor master

Answer: A

NEW QUESTION 396

DRAG DROP - (Topic 1)

You need to configure check printing for Munson's.
Which four actions should you perform in sequence? To answer, move the appropriate actions from the list of actions to the answer area and arrange them in the correct order.

Actions

Install the Document Routing Agent on the client machines where users will be printing the checks.

Navigate to the legal entity and enable the printer.

Select the legal entities for the printer to be available.

Discover and add the check printer from the Document Routing Agent.

Enter the Dynamics 365 Finance and Operations configurations in the Document Routing Agent.

Discover and add the check printer to the system from Dynamics 365 Finance and Operations.

Install the Document Routing Agent on the corporate print server.

Register the Document Routing Agent with Dynamics 365 Finance and Operations.

Answer Area

- A. Mastered
- B. Not Mastered

Answer: A

Explanation:

Actions

Install the Document Routing Agent on the client machines where users will be printing the checks.

Navigate to the legal entity and enable the printer.

Select the legal entities for the printer to be available.

Discover and add the check printer from the Document Routing Agent.

Enter the Dynamics 365 Finance and Operations configurations in the Document Routing Agent.

Discover and add the check printer to the system from Dynamics 365 Finance and Operations.

Install the Document Routing Agent on the corporate print server.

Register the Document Routing Agent with Dynamics 365 Finance and Operations.

Answer Area

Install the Document Routing Agent on the client machines where users will be printing the checks.

Enter the Dynamics 365 Finance and Operations configurations in the Document Routing Agent.

Discover and add the check printer from the Document Routing Agent.

Discover and add the check printer to the system from Dynamics 365 Finance and Operations.

NEW QUESTION 399

- (Topic 1)

You need to trigger a Flow when a technical service order request is created.
Which three objects can you use? Each correct answer presents a complete solution. NOTE: Each correct selection is worth one point.

- A. Work items
- B. Change-based alerts

- C. Business Events
- D. External feeds
- E. Workflow

Answer: BCD

NEW QUESTION 400

HOTSPOT - (Topic 1)

You need to address the client's technical support requirements.

Which solutions should you use? To answer, select the appropriate options in the answer area

NOTE: Each correct selection is worth one point.

Action

Solution

Look for Microsoft submitted support requests that might match the issue in question.

	▼
Issue Search	
Open work items	
Release Notes	
Support Issues	

Search criteria for the open Microsoft tickets.

	▼
alert notification	
"alert notification"	
alert+notification	
'alert notification'	

Issue status update method.

	▼
Notifications	
Alert Service	
Manage Incidents	
Announcements	

- A. Mastered
- B. Not Mastered

Answer: A

Explanation:

Action

Solution

Look for Microsoft submitted support requests that might match the issue in question.

	▼
Issue Search	
Open work items	
Release Notes	
Support Issues	

Search criteria for the open Microsoft tickets.

	▼
alert notification	
"alert notification"	
alert+notification	
'alert notification'	

Issue status update method.

	▼
Notifications	
Alert Service	
Manage Incidents	
Announcements	

NEW QUESTION 405

HOTSPOT - (Topic 1)

You need to ensure that the customer service representatives are able to initiate a refund request.

Which workflow elements should you configure? To answer, select the appropriate options in the answer area.

NOTE: Each correct selection is worth one point.

Workflow configurations

Elements

Element to use

	▼
Approval steps	
Manual task	
Automated task	
Approval processes	

Assignment type

	▼
Participant	
Workflow user	
Hierarchy	
User	

Notifications

	▼
Delegate	
Request change	
Escalate	
Complete	

- A. Mastered
- B. Not Mastered

Answer: A

Explanation:

Workflow configurations

Elements

Element to use

	▼
Approval steps	
Manual task	
Automated task	
Approval processes	

Assignment type

	▼
Participant	
Workflow user	
Hierarchy	
User	

Notifications

	▼
Delegate	
Request change	
Escalate	
Complete	

NEW QUESTION 407

- (Topic 1)

You need to determine when and where the user regression testing should take place for new Dynamics 365 Finance releases. When and where should the testing take place?

- A. the Monday before the second Saturday in the month in the base Test/User Acceptance Testing environment
- B. the Monday before the second Saturday in the month in the base sandbox environment
- C. the Monday after the second Saturday in the month in the base Test/User Acceptance Testing environment
- D. the Monday after the second Saturday in the month in the base sandbox environment

Answer: A

NEW QUESTION 410

- (Topic 1)

You need to configure the system for account representatives.

Which two actions should you perform? Each correct answer presents a partial solution. NOTE: Each correct selection is worth one point.

- A. Recreate the job alert as a change-based alert.
- B. Enable change-based alerts.
- C. Increase the batch job running frequency.
- D. Specify the batch server for the alert notifications job.

Answer: AC

NEW QUESTION 415

.....

THANKS FOR TRYING THE DEMO OF OUR PRODUCT

Visit Our Site to Purchase the Full Set of Actual mb-300 Exam Questions With Answers.

We Also Provide Practice Exam Software That Simulates Real Exam Environment And Has Many Self-Assessment Features. Order the mb-300 Product From:

<https://www.2passeasy.com/dumps/mb-300/>

Money Back Guarantee

mb-300 Practice Exam Features:

- * mb-300 Questions and Answers Updated Frequently
- * mb-300 Practice Questions Verified by Expert Senior Certified Staff
- * mb-300 Most Realistic Questions that Guarantee you a Pass on Your FirstTry
- * mb-300 Practice Test Questions in Multiple Choice Formats and Updatesfor 1 Year