

AZ-800 Dumps

Administering Windows Server Hybrid Core Infrastructure

<https://www.certleader.com/AZ-800-dumps.html>



NEW QUESTION 1

SIMULATION - (Topic 4)

Task 7

You need to monitor the security configuration of DC1 by using Microsoft Defender for Cloud.

The required source files are located in a folder named \\dc1.contoso.com\install.

- A. Mastered
- B. Not Mastered

Answer: A**Explanation:**

One possible solution to monitor the security configuration of DC1 by using Microsoft Defender for Cloud is to use the Guest Configuration feature. Guest Configuration is a service that audits settings inside Linux and Windows virtual machines (VMs) to assess their compliance with your organization's security policies. You can use Guest Configuration to monitor the security baseline settings for Windows Server in the Microsoft Defender for Cloud portal by following these steps:

? On DC1, open a web browser and go to the folder named \\dc1.contoso.com\install.

Download the Guest Configuration extension file (GuestConfiguration.msi) and save it to a local folder, such as C:\Temp.

? Run the Guest Configuration extension file and follow the installation wizard. You can choose to install the extension for all users or only for the current user. For more information on how to install the Guest Configuration extension, see Install the Guest Configuration extension.

? After the installation is complete, sign in to the Microsoft Defender for Cloud portal (2).

? In the left pane, select Security Center and then Recommendations.

? In the recommendations list, find and select Vulnerabilities in security configuration on your Windows machines should be remediated (powered by Guest Configuration).

? In the Remediate Security Configurations page, you can see the compliance status of your Windows VMs, including DC1, based on the Azure Compute Benchmark.

The Azure Compute Benchmark is a set of rules that define the desired configuration state of your VMs. You can also see the number of failed, passed, and skipped rules for each VM. For more information on the Azure Compute Benchmark, see Microsoft cloud security benchmark: Azure compute benchmark is now available.

? To view the details of the security configuration of DC1, click on the VM name and then select View details. You can see the list of rules that apply to DC1 and their compliance status. You can also see the severity, description, and remediation steps for each rule. For example, you can see if DC1 has the latest security updates installed, if the firewall is enabled, if the password policy is enforced, and so on.

? To monitor the security configuration of DC1 over time, you can use the Compliance over time chart, which shows the trend of compliance status for DC1 in the past 30 days. You can also use the Compliance breakdown chart, which shows the distribution of compliance status for DC1 by rule severity.

By using Guest Configuration, you can monitor the security configuration of DC1 by using Microsoft Defender for Cloud and ensure that it meets your organization's security standards. You can also use Guest Configuration to monitor the security configuration of other Windows and Linux VMs in your Azure environment.

NEW QUESTION 2

SIMULATION - (Topic 4)

Task 1

You need to prevent domain users from saving executable files in a share named

\\SRV\Data. The users must be able to save other files to the share.

- A. Mastered
- B. Not Mastered

Answer: A**Explanation:**

One possible solution to prevent domain users from saving executable files in a share named \\SRV\Data is to use file screening on the file server. File screening allows you to block certain files from being saved based on their file name extension. Here are the steps to configure file screening:

? On the file server, open File Server Resource Manager from the Administrative Tools menu.

? In the left pane, expand File Screening Management and click on File Groups.

? Right-click on File Groups and select Create File Group.

? In the File Group Properties dialog box, enter a name for the file group, such as Executable Files.

? In the Files to include box, enter the file name extensions that you want to block, such as .exe, .bat, .cmd, .com, .msi, .scr. You can use wildcards to specify multiple extensions, such as *.exe.

? Click OK to create the file group.

? In the left pane, click on File Screen Templates.

? Right-click on File Screen Templates and select Create File Screen Template.

? In the File Screen Template Properties dialog box, enter a name for the template, such as Block Executable Files.

? On the Settings tab, select the option Active screening. Do not allow users to save unauthorized files.

? On the File Groups tab, check the box next to the file group that you created, such as Executable Files.

? On the Notification tab, you can configure how to notify users and administrators when a file screening event occurs, such as sending an email, logging an event, or running a command or script. You can also customize the message that users see when they try to save a blocked file.

? Click OK to create the file screen template.

? In the left pane, click on File Screens.

? Right-click on File Screens and select Create File Screen.

? In the Create File Screen dialog box, enter the path of the folder that you want to apply the file screening to, such as \\SRV\Data.

? Select the option Derive properties from this file screen template (recommended) and choose the template that you created, such as Block Executable Files.

? Click Create to create the file screen.

Now, domain users will not be able to save executable files in the share named

\\SRV\Data. They will be able to save other files to the share.

NEW QUESTION 3

- (Topic 3)

You have an Azure virtual machine named VM1 that has a private IP address only. You configure the Windows Admin Center extension on VM1.

You have an on-premises computer that runs Windows 11. You use the computer for server management.

You need to ensure that you can use Windows Admin Center from the Azure portal to manage VM1. What should you configure?

- A. an Azure Bastion host on the virtual network that contains VM1.
- B. a VPN connection to the virtual network that contains VM1.
- C. a network security group (NSG) rule that allows inbound traffic on port 443.
- D. a private endpoint on the virtual network that contains VM1.

Answer: B

Explanation:

Reference:

<https://docs.microsoft.com/en-us/windows-server/manage/windows-admin-center/azure/manage-vm>

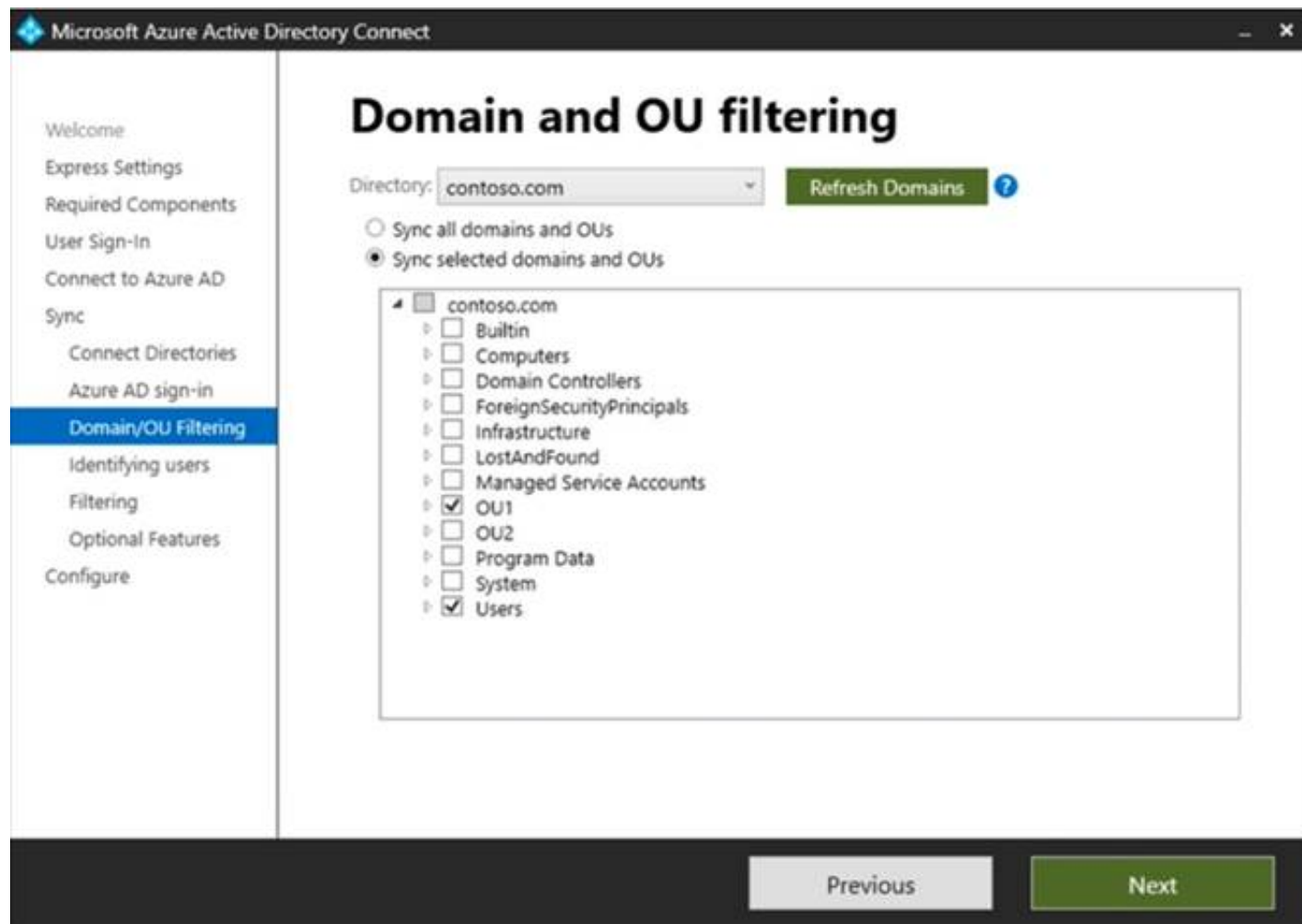
NEW QUESTION 4

HOTSPOT - (Topic 3)

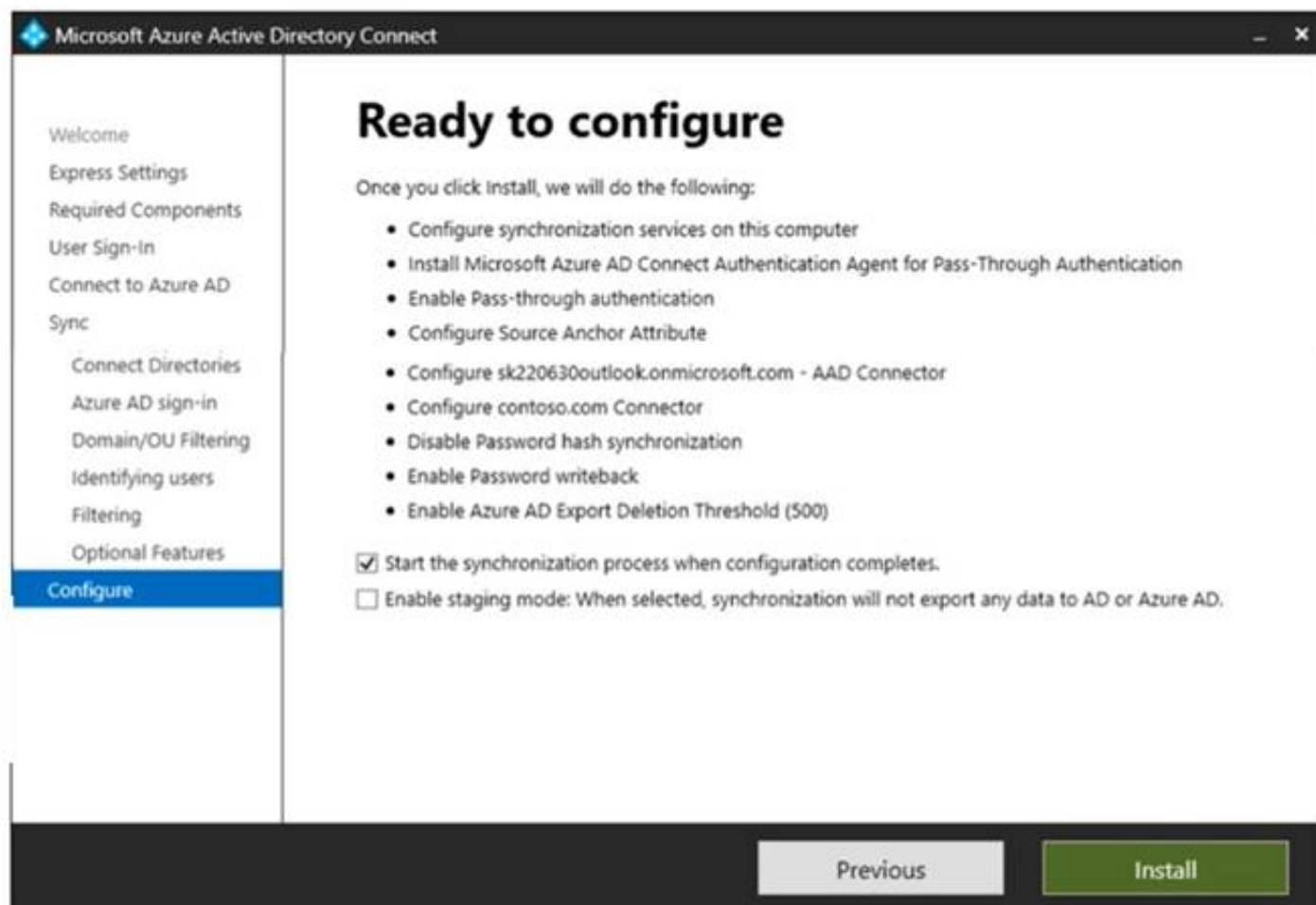
Your network contains an on-premises Active Directory Domain Services (AD DS) domain named contoso.com that syncs with an Azure AD tenant. The tenant contains a group named Group1 and the users shown in the following table.

Name	In organizational unit (OU)
User1	OU1
User2	OU2

Domain/OU filtering in Azure AD Connect is configured as shown in the Filtering exhibit. (Click the Filtering tab.)



You review the Azure AD Connect configurations as shown in the Configure exhibit. (Click the Configure tab.)



For each of the following statements, select Yes if the statement is true. Otherwise, select No. NOTE: Each correct selection is worth one point.

Answer Area

Statements	Yes	No
User1 can use self-service password reset (SSPR) to reset his password.	<input type="radio"/>	<input type="radio"/>
If User1 connects to Microsoft Exchange Online, an on-premises domain controller provides authentication.	<input type="radio"/>	<input type="radio"/>
You can add User2 to Group1 as a member.	<input type="radio"/>	<input type="radio"/>

- A. Mastered
B. Not Mastered

Answer: A

Explanation:

Answer Area

Statements	Yes	No
User1 can use self-service password reset (SSPR) to reset his password.	<input type="radio"/>	<input checked="" type="radio"/>
If User1 connects to Microsoft Exchange Online, an on-premises domain controller provides authentication.	<input type="radio"/>	<input checked="" type="radio"/>
You can add User2 to Group1 as a member.	<input type="radio"/>	<input checked="" type="radio"/>

NEW QUESTION 5

HOTSPOT - (Topic 3)

You have an Azure subscription that contains a virtual network named VNet1. Vnet1 contains three subnets named Subnet1, Subnet2, and Subnet3. You deploy a virtual machine that has the following settings:

- Name: VM1
- Subnet: Subnet2
- Network interface name: NIC1
- Operating system: Windows Server 2022

You need to ensure that VM1 can route traffic between Subnet1 and Subnet3. The solution must minimize administrative effort.

What should you do? To answer, select the appropriate options in the answer area. NOTE: Each correct selection is worth one point.

Answer Area

From the Azure portal:

Associate a routing table with Subnet2.

Associate a routing table with Subnet2.

Attach two additional interfaces to VM1.

Enable IP forwarding for NIC1.

On VM1:

Install and configure a network controller.

Install and configure a network controller.

Install and configure Routing and Remote Access.

Run the route add command.

- A. Mastered
B. Not Mastered

Answer: A

Explanation:

Answer Area

From the Azure portal:

On VM1:

Associate a routing table with Subnet2.

Associate a routing table with Subnet2.

Attach two additional interfaces to VM1.

Enable IP forwarding for NIC1.

Install and configure a network controller.

Install and configure a network controller.

Install and configure Routing and Remote Access.

Run the route add command.

NEW QUESTION 6

DRAG DROP - (Topic 3)

Your network contains a single domain Active Directory Domain Services (AD DS) forest named contoso.com. The forest contains a single Active Directory site. You plan to deploy a read only domain controller (RODC) to a new datacenter on a server named Server1. A user named User1 is a member of the local Administrators group on Server1.

You need to recommend a deployment plan that meets the following requirements:

? Ensures that a user named User1 can perform the RODC installation on Server1

? Ensures that you can control the AD DS replication schedule to the Server1

? Ensures that Server1 is in a new site named RemoteSite1

? Uses the principle of least privilege

Which three actions should you recommend performing in sequence? To answer, move the appropriate actions from the list of actions to the answer area and arrange them in the correct order.

Actions

Answer Area

Instruct User1 to run the Active Directory Domain Services installation Wizard on Server1.

Create a site and a subnet.

Create a site link.

Pre-create an RODC account.

Add User1 to the Contoso\Administrators group.

>

<

- A. Mastered
- B. Not Mastered

Answer: A

Explanation:

Box 1.

We need to create a site and subnet for the remote site. The new site will be added to the Default IP Site Link so we don't need to create a new site link. You configure the replication schedule on the site link.

Box 2.

When we pre-create an RODC account, we can specify who is allowed to attach the server to the prestaged account. This means that the User1 does not need to be added to the Domain Admins group.

Box3.

User1 can connect the RODC to the prestaged account by running the AD DS installation wizard.

NEW QUESTION 7

- (Topic 3)

Your network contains an on-premises Active Directory Domain Services (AD DS) domain named contoso.com. The domain contains three servers that run Windows Server and have the Hyper-V server role installed. Each server has a Switch Embedded Teaming (SET) team.

You need to verify that Remote Direct Memory Access (RDMA) and required Windows Server settings are configured properly on each server to support a failover cluster.

What should you use?

- A. the validate-DCB cmdlet
- B. Server Manager
- C. the Get-NetAdapter cmdlet
- D. Failover Cluster Manager

Answer: A

NEW QUESTION 8

- (Topic 3)

Your network contains a DHCP server.
You plan to add a new subnet and deploy Windows Server to the subnet. You need to use the server as a DHCP relay agent.
Which role should you install on the server?

- A. Network Policy and Access Services
- B. Remote Access
- C. Network Controller
- D. DHCP Server

Answer: B

NEW QUESTION 9

HOTSPOT - (Topic 3)

Your company has offices in Boston and Montreal. The offices are connected by using a 10-Mbps WAN link that is often saturated The office in Boston contains the following:

- An Active Directory Domain Services (AD DS) domain controller named DC1.
- A server named Server1 that runs Windows Server and has the File Server role installed The office in Montreal contains 20 client computers that run Windows 10 Montreal does NOT have any servers.

The company plans to deploy a new line of business (LOB) application to all the client computers. The installation source files for the application are in \\Server\Apps.

Answer Area

On Server1:

On the client computers:

- A. Mastered
- B. Not Mastered

Answer: A

Explanation:

Answer Area

On Server1:

On the client computers:

NEW QUESTION 10

DRAG DROP - (Topic 3)

You have a server named Server1 that has Windows Admin Center installed. The certificate used by Windows Admin Center was obtained from a certification authority (CA).

The certificate expires.

You need to replace the certificate.

Which three actions should you perform in sequence? To answer, move the appropriate actions from the list of actions to the answer area and arrange them in the correct order.

Actions	Answer Area
Copy the certificate thumbprint.	
From Internet Information Services (IIS) Manager, bind a certificate.	
Rerun Windows Admin Center Setup and select Change .	
Rerun Windows Admin Center Setup and select Repair .	
Rerun Windows Admin Center Setup and select Remove .	

- A. Mastered
B. Not Mastered

Answer: A

Explanation:

Actions	Answer Area
Copy the certificate thumbprint.	
From Internet Information Services (IIS) Manager, bind a certificate.	
Rerun Windows Admin Center Setup and select Change .	
Rerun Windows Admin Center Setup and select Repair .	
Rerun Windows Admin Center Setup and select Remove .	

NEW QUESTION 10

- (Topic 3)

Your network contains an Active Directory Domain Services (AD DS) forest. The forest contains three domains. Each domain contains 10 domain controllers. You plan to store a DNS zone in a custom Active Directory partition. You need to create the Active Directory partition for the zone. The partition must replicate to only four of the domain controllers. What should you use?

- A. DNS Manager
B. New-ADObject
C. dnscnd.exe
D. Windows Admin Center

Answer: D

NEW QUESTION 14

DRAG DROP - (Topic 3)

Your network contains two Active Directory Domain Services (AD DS) forests named contoso.com and fabrikam.com. Contoso.com contains three child domains named amer.contoso.com, apac.contoso.com, and emea.contoso.com. Fabrikam.com contains a child domain named apac.fabrikam.com. A bidirectional forest trust exists between contoso.com and fabrikam.com.

You need to provide users in the contoso.com forest with access to the resources in the fabrikam.com forest. The solution must meet the following requirements:

- Users in contoso.com must only be added directly to groups in the contoso.com forest.
- Permissions to access the resources in fabrikam.com must only be granted directly to groups in the fabrikam.com forest.
- The number of groups must be minimized.

Which type of groups should you use to organize the users and to assign permissions? To answer, drag the appropriate group types to the correct requirements. Each group type may be used once, more than once, or not at all. You may need to drag the split bar between panes or scroll to view content.

NOTE: Each correct selection is worth one point.

Group types	Answer Area
<input type="text" value="Domain global"/>	Organize users: <input type="text"/>
<input type="text" value="Domain local"/>	Assign permissions: <input type="text"/>
<input type="text" value="Universal"/>	

- A. Mastered
- B. Not Mastered

Answer: A

Explanation:

Group types	Answer Area
<input type="text" value="Domain global"/>	Organize users: <input type="text" value="Domain local"/>
<input type="text" value="Domain local"/>	Assign permissions: <input type="text" value="Universal"/>
<input type="text" value="Universal"/>	

NEW QUESTION 19

- (Topic 3)

You have a server named Host1 that has the Hyper-V server role installed. Host1 hosts a virtual machine named VM1.

You have a management server named Server1 that runs Windows Server. You remotely manage Host1 from Server1 by using Hyper-V Manager.

You need to ensure that you can access a USB hard drive connected to Server1 when you connect to VM1 by using Virtual Machine Connection.

Which two actions should you perform? Each correct answer presents part of the solution. NOTE: Each correct selection is worth one point.

- A. From the Hyper-V Settings of Host1, select Allow enhanced session mode
- B. From Disk Management on Host1, attach a virtual hard disk.
- C. From Virtual Machine Connection, switch to a basic session.
- D. From Virtual Machine Connection select Show Options and then select the USB hard drive.
- E. From Disk Management on Host1, select Rescan Disks

Answer: AD

Explanation:

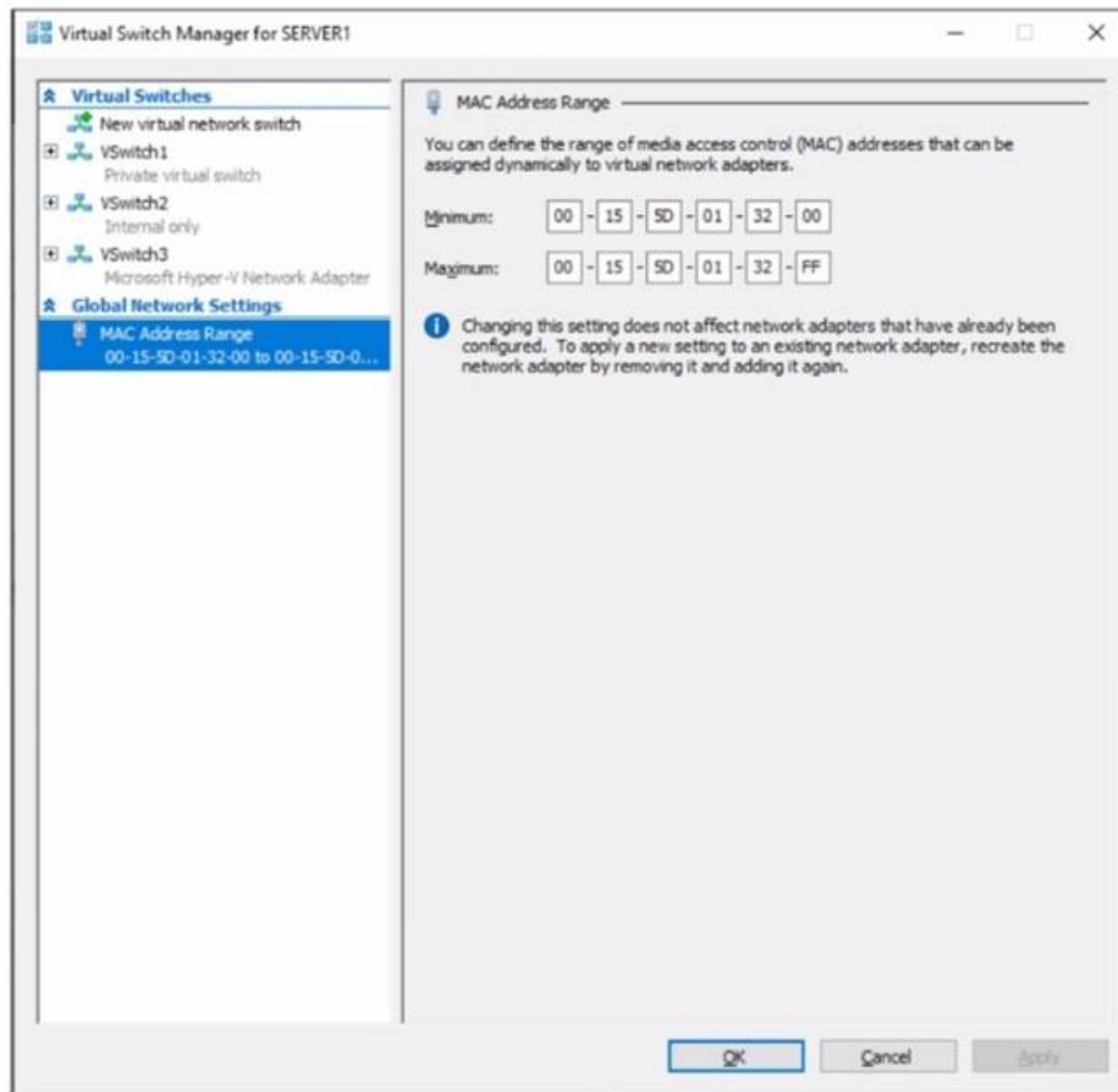
Reference:

<https://docs.microsoft.com/en-us/windows-server/virtualization/hyper-v/learn-more/use-local-resources-on-hyper-v-virtual-machine-with-vmconnect>

NEW QUESTION 24

HOTSPOT - (Topic 3)

You have a server named Server1 that runs Windows Server. Server1 has a single network interface and the Hyper-V virtual switches shown in the following exhibit.



Use the drop-down menus to select the answer choice that completes each statement based on the information presented in the graphic.
NOTE: Each correct selection is worth one point.

Answer Area

On Server1, you can create additional [answer choice].

Server1 can access network shares on virtual machines that are connected to [answer choice].

- A. Mastered
B. Not Mastered

Answer: A

Explanation:

Answer Area

On Server1, you can create additional [answer choice].

Server1 can access network shares on virtual machines that are connected to [answer choice].

NEW QUESTION 28

HOTSPOT - (Topic 3)

Your network contains an Active Directory Domain Services (AD DS) forest named contoso.com. The forest contains a child domain named east.contoso.com. In the contoso.com domain, you create two users named Admin1 and Admin2. You need to ensure that the users can perform the following tasks:

- Admin1 can create and manage Active Directory sites.
- Admin2 can deploy domain controller to the east.contoso.com domain. The solution must use the principle of least privilege.

To which group should you add each user? To answer, select the appropriate options in the answer area.
NOTE Each correct selection is worth one point.

Answer Area

Admin1:

Contoso\Administrators
Contoso\Domain Admins
Contoso\Enterprise Admins
East\Administrators
East\Domain Admins

Admin2:

Contoso\Administrators
Contoso\Domain Admins
Contoso\Enterprise Admins
East\Administrators
East\Domain Admins

- A. Mastered
B. Not Mastered

Answer: A

Explanation:

Answer Area

Admin1: Contoso\Enterprise Admins

Admin2: East\Domain Admins

NEW QUESTION 29

DRAG DROP - (Topic 3)

Your network contains an Active Directory domain named contoso.com. The domain contains group managed service accounts (gMSAs). You have a server named Server1 that runs Windows Server and is in a workgroup. Server1 hosts Windows containers.

You need to ensure that the Windows containers can authenticate to contoso.com. Which three actions should you perform in sequence? To answer, move the appropriate

actions from the list of actions to the answer area and arrange them in the correct order.

Actions

On Server1, install and run ccg.exe.
On Server1, run New-CredentialSpec.
In contoso.com, generate a Key Distribution Service (KDS) root key.
In contoso.com, create a gMSA and a standard user account.
From a domain-joined computer, create a credential spec file and copy the file to Server1.

>
<

Answer Area

^
v

- A. Mastered
B. Not Mastered

Answer: A

Explanation:

Actions

On Server1, install and run ccg.exe.
On Server1, run New-CredentialSpec.
In contoso.com, generate a Key Distribution Service (KDS) root key.
In contoso.com, create a gMSA and a standard user account.
From a domain-joined computer, create a credential spec file and copy the file to Server1.

>
<

Answer Area

In contoso.com, generate a Key Distribution Service (KDS) root key.
In contoso.com, create a gMSA and a standard user account.
From a domain-joined computer, create a credential spec file and copy the file to Server1.

^
v

NEW QUESTION 34

- (Topic 3)

You have an Azure subscription that contains the following resources:

- An Azure Log Analytics workspace
- An Azure Automation account
- Azure Arc.

You have an on-premises server named Server1 that is onboarded to Azure Arc. You need to manage Microsoft updates on Server1 by using Azure Arc. Which two actions should you perform? Each correct answer presents part of the solution. NOTE: Each correct selection is worth one point.

- A. Add Microsoft Sentinel to the Log Analytics workspace
B. On Server1, install the Azure Monitor agent
C. From the Automation account, enable Update Management for Server1.
D. From the Virtual machines data source of the Log Analytics workspace, connect Server1.

Answer: BC

Explanation:

Reference:

<https://docs.microsoft.com/en-us/azure/cloud-adoption-framework/manage/hybrid/server/best-practices/arc-update-management>

NEW QUESTION 38

DRAG DROP - (Topic 3)

You create a new Azure subscription.

You plan to deploy Azure Active Directory Domain Services (Azure AD DS) and Azure virtual machines. The virtual machines will be joined to Azure AD DS.

You need to deploy Active Directory Domain Services (AD DS) to ensure that the virtual machines can be deployed and joined to Azure AD DS.

Which three actions should you perform in sequence? To answer, move the appropriate actions from the list of actions to the answer area and arrange them in the correct order.

Actions

Modify the settings of the Azure virtual network.

Install the Active Directory Domain Services role.

Install Azure AD Connect.

Create an Azure virtual network.

Create an Azure AD DS instance.

Run the Active Directory Domain Service installation Wizard.

Answer Area

>

<

- A. Mastered
- B. Not Mastered

Answer: A

Explanation:

Actions

Modify the settings of the Azure virtual network.

Install the Active Directory Domain Services role.

Install Azure AD Connect.

Create an Azure virtual network.

Create an Azure AD DS instance.

Run the Active Directory Domain Service installation Wizard.

Answer Area

Create an Azure virtual network.

Create an Azure AD DS instance.

> Modify the settings of the Azure virtual network.

<

NEW QUESTION 42

- (Topic 3)

You have an Azure virtual machine named Served that runs a network management application. Server1 has the following network configurations:

- Network interface: Nic1
- IP address. 10.1.1.1/24
- Connected to: VnetVSubnet1

You need to connect Server1 to an additional subnet named Vnet1/Subnet2. What should you do?

- A. Modify the IP configurations of Nic1.
- B. Add a network interface to Server1.
- C. Add an IP configuration to Nic1.
- D. Create a private endpoint on Subnet2

Answer: D

NEW QUESTION 47

DRAG DROP - (Topic 3)

You have an Azure subscription. The subscription contains a virtual machine named VM1 that runs Windows Server. VM1 contains a 128-GB operating system disk.

You need to increase the size of volume C on VM1 to 250 GB.

Which four actions should you perform in sequence? To answer, move the appropriate actions from the list of actions to the answer area and arrange them in the correct order.

Actions

Resize VM1.

Redeploy VM1.

Stop VM1.

Resize the operating system disk.

Start VM1.

Resize volume C.

>

<

Answer Area

^

v

- A. Mastered
B. Not Mastered

Answer: A

Explanation:

Actions

Resize VM1.

Redeploy VM1.

Stop VM1.

Resize the operating system disk.

Start VM1.

Resize volume C.

>

<

Answer Area

Stop VM1.

Resize the operating system disk.

Start VM1.

Resize volume C.

^

v

NEW QUESTION 49

- (Topic 3)

Your network contains an Active Directory Domain Services (AD DS) forest named contoso.com. The root domain contains the domain controllers shown in the following table.

Name	FSMO role
DC1	Domain naming master
DC2	RID master
DC3	PDC emulator
DC4	Schema master
DC5	Infrastructure master

A failure of which domain controller will prevent you from creating application partitions?

- A. DC1
B. DC2
C. DC3
D. DC4
E. DC5

Answer: A

Explanation:

Reference:

<https://docs.microsoft.com/en-us/troubleshoot/windows-server/identity/fsmo-roles>

NEW QUESTION 54

- (Topic 3)

You have an Azure Active Directory Domain Services (Azure AD DS) domain named contoso.com.

You need to provide an administrator with the ability to manage Group Policy Objects (GPOs). The solution must use the principle of least privilege.

To which group should you add the administrator?

- A. AAD DC Administrators
B. Domain Admins
C. Schema Admins
D. Enterprise Admins
E. Group Policy Creator Owners

Answer: B

Explanation:

Only the Domain Admins group and the Enterprise Admins group can fully manage GPOs. Members of the Group Policy Creator Owners group can create new GPOs but they can't link the GPOs to sites, the domain or OUs and they cannot manage existing GPOs.

NEW QUESTION 57

- (Topic 3)

Your network contains an Active Directory Domain Services (AD DS) domain. The domain contains the domain controllers shown in the following table.

Name	Description
DC1	PDC emulator, RID master, and global catalog server
DC2	Infrastructure master and domain naming master
DC3	Schema master
RODC1	Read-only domain controller (RODC)

You need to ensure that if an attacker compromises the computer account of RODC1, the attacker cannot view the Employee-Number AD DS attribute. Which partition should you modify?

- A. configuration
- B. global catalog
- C. domain
- D. schema

Answer: D

NEW QUESTION 60

- (Topic 3)

Your network contains an on-premises Active Directory Domain Services (AD DS) domain named contoso.com. The domain contains three servers that run Windows Server and have the Hyper-V server role installed. Each server has a Switch Embedded Teaming (SET) team.

You need to verify that Remote Direct Memory Access (RDMA) and all the required Windows Server settings are configured properly on each server.

What should you use?

- A. Server Manager
- B. the validate-DCB cmdlet
- C. the Get-NetAdapter cmdlet
- D. Failover Cluster Manager

Answer: B

Explanation:

Reference: <https://github.com/Microsoft/Validate-DCB>

NEW QUESTION 61

- (Topic 3)

You have five file servers that run Windows Server.

You need to block users from uploading video files that have the .mov extension to shared folders on the file servers. All other types of files must be allowed. The solution must minimize administrative effort.

What should you create?

- A. a Dynamic Access Control central access policy
- B. a file screen
- C. a Dynamic Access Control central access rule
- D. a data loss prevention (DLP) policy

Answer: B

Explanation:

Reference:

<https://docs.microsoft.com/en-us/windows-server/storage/fsrm/file-screening-management>

NEW QUESTION 64

DRAG DROP - (Topic 3)

You have an on-premises server named Server 1 that runs Windows Server. Server 1 contains a file share named Share 1.

You have an Azure subscription. You perform the following actions:

- Deploy Azure File Sync
- Install the Azure File Sync agent on Server1.
- Register Server1 with Azure File Sync

You need to ensure that you can add Share1 as an Azure File Sync server endpoint. Which three actions should you perform in sequence? To answer, move the appropriate

actions from the list of actions to the answer area and arrange them in the correct order.

Actions	Answer Area
Deploy the Azure Connected Machine agent.	<div style="display: flex; align-items: center;"> <div style="margin-right: 10px;"> <div style="border: 1px solid black; width: 30px; height: 30px; border-radius: 50%; text-align: center; line-height: 30px;">➤</div> <div style="border: 1px solid black; width: 30px; height: 30px; border-radius: 50%; text-align: center; line-height: 30px;">➤</div> </div> </div>
Deploy an Azure VPN gateway.	
Create a private endpoint.	
Create an Azure Storage account.	
Create an Azure file share.	
Create a sync group.	

A. Mastered

B. Not Mastered

Answer: A

Explanation:

Actions

Deploy the Azure Connected Machine agent.

Deploy an Azure VPN gateway.

Create a private endpoint.

Create an Azure Storage account.

Create an Azure file share.

Create a sync group.

>

<

Answer Area

Create an Azure Storage account.

Create an Azure file share.

Create a sync group.

^

v

NEW QUESTION 65

HOTSPOT - (Topic 3)

You have on-premises servers that run Windows Server as shown in the following table.

Name	Local content
Server1	D:\Folder1\File1.docx
Server2	D:\Data1\File3.docx

You have an Azure file share named share1 that stores two files named File2.docx and File3.docx.

You create an Azure File Sync sync group that includes the following endpoints:

? share

? D:\Folder1 on Server1

? D:\Data1 on Server2

For each of the following statements, select Yes if the statement is true. Otherwise, select No.

NOTE: Each correct selection is worth one point.

Statements	Yes	No
You can create a file named File2.docx in D:\Folder1 on Server1.	<input type="checkbox"/>	<input type="checkbox"/>
You can create a file named File1.docx in D:\Data1 on Server2.	<input type="checkbox"/>	<input type="checkbox"/>
File3.docx will sync to Server1.	<input type="checkbox"/>	<input type="checkbox"/>

A. Mastered

B. Not Mastered

Answer: A

Explanation:

Statements	Yes	No
You can create a file named File2.docx in D:\Folder1 on Server1.	<input checked="" type="checkbox"/>	<input type="checkbox"/>
You can create a file named File1.docx in D:\Data1 on Server2.	<input checked="" type="checkbox"/>	<input type="checkbox"/>
File3.docx will sync to Server1.	<input type="checkbox"/>	<input checked="" type="checkbox"/>

NEW QUESTION 70

- (Topic 3)

Your network contains an Active Directory Domain Services (AD DS) domain named contoso.com.

You need to identify which server is the PDC emulator for the domain. Solution: From a command prompt, you run netdom.exe query fsmo. Does this meet the goal?

A. Yes

B. No

Answer: A

Explanation:

Reference:
<https://activedirectorypro.com/how-to-check-fsmo-roles/>

NEW QUESTION 73

- (Topic 3)

Your company has a main office and a branch office. The two offices are connected by using a WAN link. Each office contains a firewall that filters WAN traffic. The network in the branch office contains 10 servers that run Windows Server. All servers are administered from the main office only. You plan to manage the servers in the branch office by using a Windows Admin Center gateway. On a server in the branch office, you install the Windows Admin Center gateway by using the defaults settings. You need to configure the firewall in the branch office to allow the required inbound connection to the Windows Admin Center gateway. Which inbound TCP port should you allow?

- A. 443
- B. 3389
- C. 5985
- D. 6516

Answer: A

NEW QUESTION 74

HOTSPOT - (Topic 3)

You have an Azure subscription named sub1 and 500 on-premises virtual machines that run Windows Server. You plan to onboard the on-premises virtual machines to Azure Arc by running the Azure Arc deployment script. You need to create an identity that will be used by the script to authenticate access to sub1. The solution must use the principle of least privilege. How should you complete the command? To answer, select the appropriate options in the answer area.
NOTE: Each correct selection is worth one point.

Answer Area

	-Displayname 'Arc-for-servers' -Role	
New-AzADAppCredential		Azure Connected Machine Onboarding
New-AzADServicePrincipal		Virtual Machine Contributor
New-AzUserAssignedIdentity		Virtual Machine User Login

- A. Mastered
- B. Not Mastered

Answer: A

Explanation:

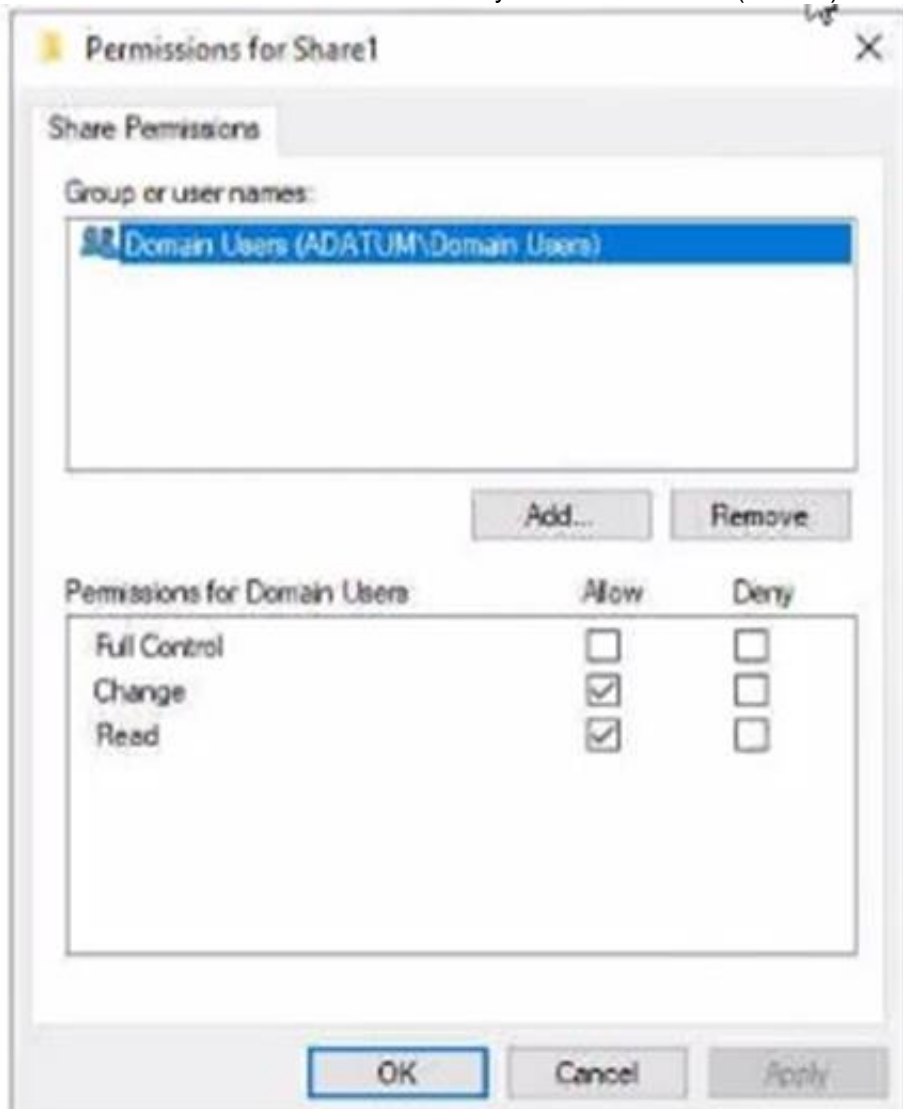
Answer Area

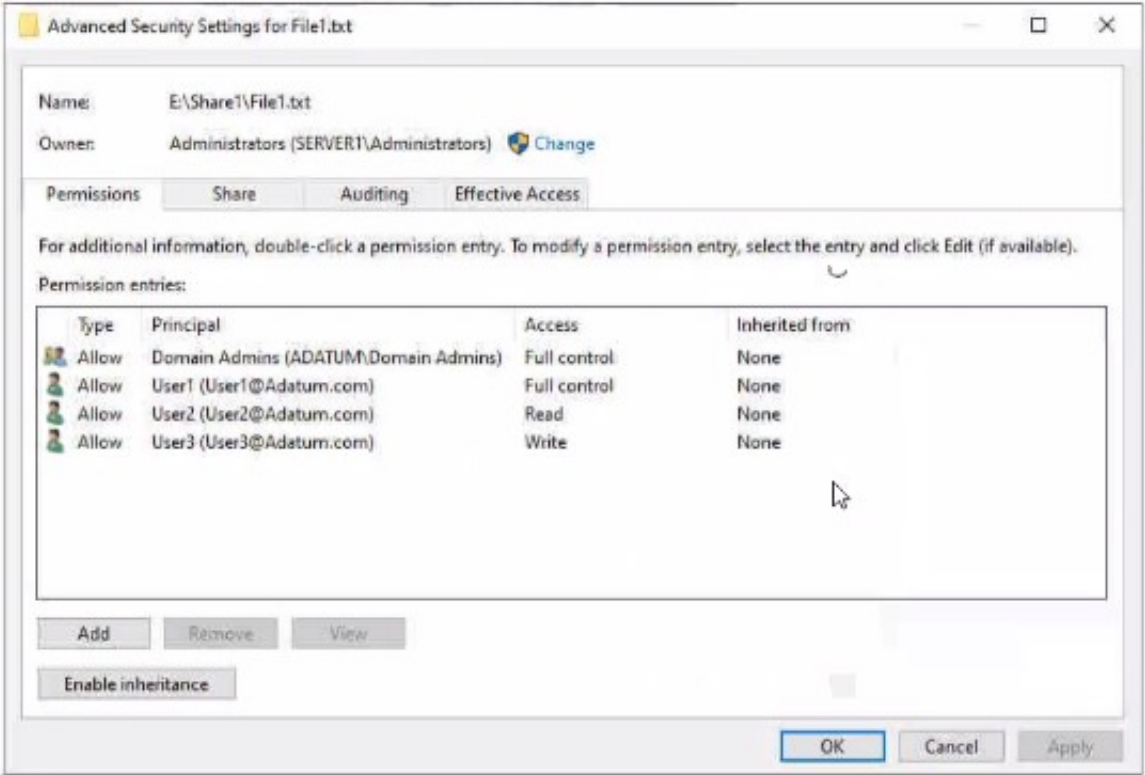
	-Displayname 'Arc-for-servers' -Role	
New-AzADAppCredential		Azure Connected Machine Onboarding
New-AzADServicePrincipal		Virtual Machine Contributor
New-AzUserAssignedIdentity		Virtual Machine User Login

NEW QUESTION 76

HOTSPOT - (Topic 3)

Your network contains an Active Directory Domain Services (AD DS) domain named adatum.com.





The domain contains a 'He server named Server1 and three users named User1. User2 and User), Server1 contains a shared folder named Share1 tha1 has the following configurations:

```
ShareState      : Online
AvailabilityType : NonClustered
FolderEnumerationMode : AccessBased
CachingMode     : Manual
LeasingMode     : Full
SmbInstance     : Default
CompressData    : False
ContinuouslyAvailable : False
EncryptData     : False
Name            : Share1
Path            : E:\Share1
ShadowCopy     : False
```

The share permissions for Share1 are configured as shown in the Share Permissions exhibit. (Click the Share Permissions tab.) Share! contains a file named File1.txt. The advanced security settings for File1.txt are configured as shown in the File Permissions exhibit. (Click the File Permissions tab.) For each of the following statements, select Yes if the statement is true. Otherwise, select No. NOTE: f ach correct selection is worth one point.

Answer Area			
Statements		Yes	No
When User1 connects to \\Server1.adatum.com\Share1\, the user can take ownership of File1.txt.		<input type="radio"/>	<input type="radio"/>
When User2 connects to \\Server1.adatum.com\Share1\, File1.txt is visible.		<input type="radio"/>	<input type="radio"/>
When User3 connects to \\Server1.adatum.com\Share1\, File1.txt is visible.		<input type="radio"/>	<input type="radio"/>

- A. Mastered
- B. Not Mastered

Answer: A

Explanation:

Answer Area			
Statements		Yes	No
When User1 connects to \\Server1.adatum.com\Share1\, the user can take ownership of File1.txt.		<input type="radio"/>	<input checked="" type="radio"/>
When User2 connects to \\Server1.adatum.com\Share1\, File1.txt is visible.		<input checked="" type="radio"/>	<input type="radio"/>
When User3 connects to \\Server1.adatum.com\Share1\, File1.txt is visible.		<input type="radio"/>	<input checked="" type="radio"/>

NEW QUESTION 78

DRAG DROP - (Topic 3)

You deploy a new Active Directory Domain Services (AD DS) forest named contoso.com. The domain contains three domain controllers named DC1, DC2, and DC3.

You rename Default-First-Site-Name as Site1.

You plan to ship DC1, DC2, and DC3 to datacenters in different locations.

You need to configure replication between DC1, DC2, and DC3 to meet the following requirements:

- ? Each domain controller must reside in its own Active Directory site.
- ? The replication schedule between each site must be controlled independently.
- ? Interruptions to replication must be minimized.

Which three actions should you perform in sequence in the Active Directory Sites and Services console? To answer, move the appropriate actions from the list of actions to the answer area and arrange them in the correct order.

Actions	Answer Area
Create a connection object between DC1 and DC2.	
Create an additional site link that contains Site1 and Site2.	
Create two additional sites named Site2 and Site3. Move DC2 to Site2 and DC3 to Site3.	
Create a connection object between DC2 and DC3.	
Remove Site2 from DEFAULTIPSITELINK.	

- A. Mastered
- B. Not Mastered

Answer: A

Explanation:

Actions	Answer Area
Create a connection object between DC1 and DC2.	Create two additional sites named Site2 and Site3. Move DC2 to Site2 and DC3 to Site3.
Create an additional site link that contains Site1 and Site2.	Create a connection object between DC1 and DC2.
Create two additional sites named Site2 and Site3. Move DC2 to Site2 and DC3 to Site3.	Create a connection object between DC2 and DC3.
Create a connection object between DC2 and DC3.	
Remove Site2 from DEFAULTIPSITELINK.	

NEW QUESTION 80

- (Topic 3)

You have an on-premises server named Server1 that runs Windows Server. You have an Azure subscription that contains a virtual network named VNet1. You need to connect Server1 to VNet1 by using Azure Network Adapter. What should you use?

- A. Azure AD Connect
- B. Device Manager
- C. the Azure portal
- D. Windows Admin Center

Answer: D

NEW QUESTION 82

- (Topic 3)

Your network contains an Active Directory Domain Services (AD DS) forest. The forest contains three Active Directory sites named Site1, Site2, and Site3. Each site contains two domain controllers. The sites are connected by using DEFAULTIPSITELINK.

You open a new branch office that contains only client computers.

You need to ensure that the client computers in the new office are primarily authenticated by the domain controllers in Site1.

Solution: You configure the Try Next Closest Site Group Policy Object (GPO) setting in a GPO that is linked to Site1.

Does this meet the goal?

- A. Yes
- B. No

Answer: B

NEW QUESTION 86

- (Topic 3)

You have an Active Directory Domain Services (AD DS) domain. The domain contains a member server named Server1 that runs Windows Server.

You need to ensure that you can manage password policies for the domain from Server1. Which command should you run first on Server1?

- A. Install-Windows Feature RSAT-AO-PowerShell
- B. Install-Windows Feature 6PHC
- C. Install-Windows Feature RSAT-AD-Tool\$
- D. Install-windows Feature RSAT-AWIMS

Answer: C

NEW QUESTION 89

HOTSPOT - (Topic 3)

You have an on-premises server named Server1 that runs Windows Server and has internet connectivity.

You have an Azure subscription.

You need to monitor Server1 by using Azure Monitor.

Which resources should you create in the subscription, and what should you install on Server1? To answer, select the appropriate options in the answer area.

NOTE: Each correct selection is worth one point.

In the subscription, create:

An Azure Files storage account
A Log Analytics workspace
An Azure SQL database and a data collection rule
An Azure Blob Storage account and a data collection rule

On Server1, install:

The Azure Monitor agent
The Analytics gateway
The Device Health Attestation server role

- A. Mastered
- B. Not Mastered

Answer: A

Explanation:

NEW QUESTION 91

HOTSPOT - (Topic 3)

Your on-premises network contains an Active Directory domain named contoso.com and 500 servers that run Windows Server. All the servers are Azure Arc-enabled and joined to contoso.com.

You need to implement PowerShell Desired State Configuration (DSC) on all the servers. The solution must minimize administrative effort.

Where should you store the DSC scripts, and what should you use to apply DSC to the servers? To answer, select the appropriate options in the answer area.

NOTE: Each correct selection is worth one point.

Answer Area

Store in:

Use:

- A. Mastered
B. Not Mastered

Answer: A

Explanation:

Answer Area

Store in:

Use:

NEW QUESTION 95

- (Topic 3)

You have servers that have the DNS Server role installed. The servers are configured as shown in the following table.

Name	Office	Local DNS zone	IP address
Server1	Paris	contoso.com	10.1.1.1
Server2	New York	None	10.2.2.2

All the client computers in the New York office use Server2 as the DNS server. You need to configure name resolution in the New York office to meet the following requirements:

? Ensure that the client computers in New York can resolve names from contoso.com.

? Ensure that Server2 forwards all DNS queries for internet hosts to 131.107.100.200.

The solution must NOT require modifications to Server1. Each correct answer presents part of the solution. NOTE: Each correct selection is worth one point.

- A. a forwarder
B. a conditional forwarder
C. a delegation
D. a secondary zone
E. a reverse lookup zone

Answer: AB

Explanation:

A conditional forwarder is required for contoso.com. A forwarder is required for all other domains.

When you have a conditional forwarder and a forwarder configured, the conditional forwarder will be used for the specified domain.

You could use a secondary zone for contoso.com but that would require a configuration change on Server1.

NEW QUESTION 99

HOTSPOT - (Topic 2)

You need to configure Azure File Sync to meet the file sharing requirements. What should you do? To answer, select the appropriate options in the answer area.

NOTE Each correct selection is worth one point.

Answer Area

Minimum number of sync groups to create:

Minimum number of Storage Sync Services to create:

- A. Mastered
B. Not Mastered

Answer: A

Explanation:
Answer Area

Minimum number of sync groups to create:

1

2

3

4

Minimum number of Storage Sync Services to create:

1

2

3

4

NEW QUESTION 104

DRAG DROP - (Topic 2)

Which three actions should you perform in sequence to meet the security requirements for Webapp1? To answer, move the appropriate actions from the list of actions to the answer area and arrange them in the correct order.

Actions

Create a standalone managed service account (sMSA) in AD DS.

Configure the IIS application pool to run as Network Service.

Configure the IIS application pool to run as a specified user account.

Create a group managed service account (gMSA) in Active Directory.

Create a system-assigned managed identity in Azure AD.

Create a user-assigned managed identity in Azure AD.

Create the Key Distribution Services (KDS) root key in AD DS.

Answer Area

>

<

- A. Mastered
- B. Not Mastered

Answer: A

Explanation:

Actions

Create a standalone managed service account (sMSA) in AD DS.

Configure the IIS application pool to run as Network Service.

Configure the IIS application pool to run as a specified user account.

Create a group managed service account (gMSA) in Active Directory.

Create a system-assigned managed identity in Azure AD.

Create a user-assigned managed identity in Azure AD.

Create the Key Distribution Services (KDS) root key in AD DS.

Answer Area

Configure the IIS application pool to run as Network Service.

Create a group managed service account (gMSA) in Active Directory.

Create the Key Distribution Services (KDS) root key in AD DS.

NEW QUESTION 105

- (Topic 2)

You need to implement a name resolution solution that meets the networking requirements. Which two actions should you perform? Each correct answer presents part of the solution.

NOTE: Each correct selection is worth one point

- A. Create an Azure private DNS zone named corp.fabhkam.com.
- B. Create a virtual network link in the coip.fabnkam.c om Azure private DNS zone.
- C. Create an Azure DNS zone named corp.fabrikam.com.
- D. Configure the DNS Servers settings for Vnet1.
- E. Enable autoregistration in the corp.fabnkam.com Azure private DNS zone.
- F. On DC3, install the DNS Server role.
- G. Configure a conditional forwarder on DC3.

Answer: DF

Explanation:

Virtual machines in an Azure virtual network receive their DNS configuration from the DNS settings configured on the virtual network. You need to configure the Azure virtual network to use DC3 as the DNS server. Then all virtual machines in the virtual network will use DC3 and their DNS server.

NEW QUESTION 110

DRAG DROP - (Topic 2)

You need to meet the security requirements for passwords.

Where should you configure the components for Azure AD Password Protection? To answer, drag the appropriate components to the correct locations. Each component may be used once, more than once, or not at all. You may need to drag the split bar between panes or scroll to view content.

NOTE Each correct selection is worth one point.

Locations

DC1 only

All the domain controllers

VM1 and VM2

The Azure AD tenant

Answer Area

The Azure AD Password Protection DC agent:

Location

The Azure AD Password Protection proxy service:

Location

A custom banned password list:

Location

- A. Mastered
- B. Not Mastered

Answer: A

Explanation:

Locations

DC1 only

All the domain controllers

VM1 and VM2

The Azure AD tenant

Answer Area

The Azure AD Password Protection DC agent:

All the domain controllers

The Azure AD Password Protection proxy service:

VM1 and VM2

A custom banned password list:

The Azure AD tenant

NEW QUESTION 115

- (Topic 1)

You need to meet the technical requirements for VM2. What should you do?

- A. Implement shielded virtual machines.
- B. Enable the Guest services integration service.
- C. Implement Credential Guard.
- D. Enable enhanced session mode.

Answer: D

NEW QUESTION 117

HOTSPOT - (Topic 1)

Which groups can you add to Group3 and Group5? To answer, select the appropriate options in the answer area.

NOTE: Each correct selection is worth one point.

Group3:

Group6 only

Group1 and Group2 only

Group1 and Group4 only

Group1, Group2, Group4, and Group5 only

Group1, Group2, Group4, Groups, and Group6

Group5:

Group1 only

Group4 only

Group6 only

Group2 and Group4 only

Group4 and Group6 only

- A. Mastered
- B. Not Mastered

Answer: A

Explanation:

Group3:

Group6 only
Group1 and Group2 only
Group1 and Group4 only
Group1, Group2, Group4, and Group5 only
Group1, Group2, Group4, Groups, and Group6

Group5:

Group1 only
Group4 only
Group6 only
Group2 and Group4 only
Group4 and Group6 only

NEW QUESTION 120

HOTSPOT - (Topic 1)

For each of the following statements, select Yes if the statement is true. Otherwise, select No.

NOTE: Each correct selection is worth one point.

Answer Area

Statements	Yes	No
Admin1 must use a password that has at least 14 characters.	<input type="radio"/>	<input type="radio"/>
User1 must use a password that has at least 10 characters.	<input type="radio"/>	<input type="radio"/>
If Admin1 creates a new local user on Server1, the password for the new user must be at least eight characters.	<input type="radio"/>	<input type="radio"/>

- A. Mastered
- B. Not Mastered

Answer: A

Explanation:

Answer Area

Statements	Yes	No
Admin1 must use a password that has at least 14 characters.	<input type="radio"/>	<input checked="" type="radio"/>
User1 must use a password that has at least 10 characters.	<input checked="" type="radio"/>	<input type="radio"/>
If Admin1 creates a new local user on Server1, the password for the new user must be at least eight characters.	<input type="radio"/>	<input checked="" type="radio"/>

NEW QUESTION 124

- (Topic 1)

You need to meet the technical requirements for VM3 On which volumes can you enable Data Deduplication?

- A. D and E only
- B. C, D, E, and F
- C. D only
- D. C and D only
- E. D, E, and F only

Answer: A

Explanation:

Reference:

<https://docs.microsoft.com/en-us/windows-server/storage/data-deduplication/interop>

NEW QUESTION 125

.....

Thank You for Trying Our Product

* 100% Pass or Money Back

All our products come with a 90-day Money Back Guarantee.

* One year free update

You can enjoy free update one year. 24x7 online support.

* Trusted by Millions

We currently serve more than 30,000,000 customers.

* Shop Securely

All transactions are protected by VeriSign!

100% Pass Your AZ-800 Exam with Our Prep Materials Via below:

<https://www.certleader.com/AZ-800-dumps.html>