

HP

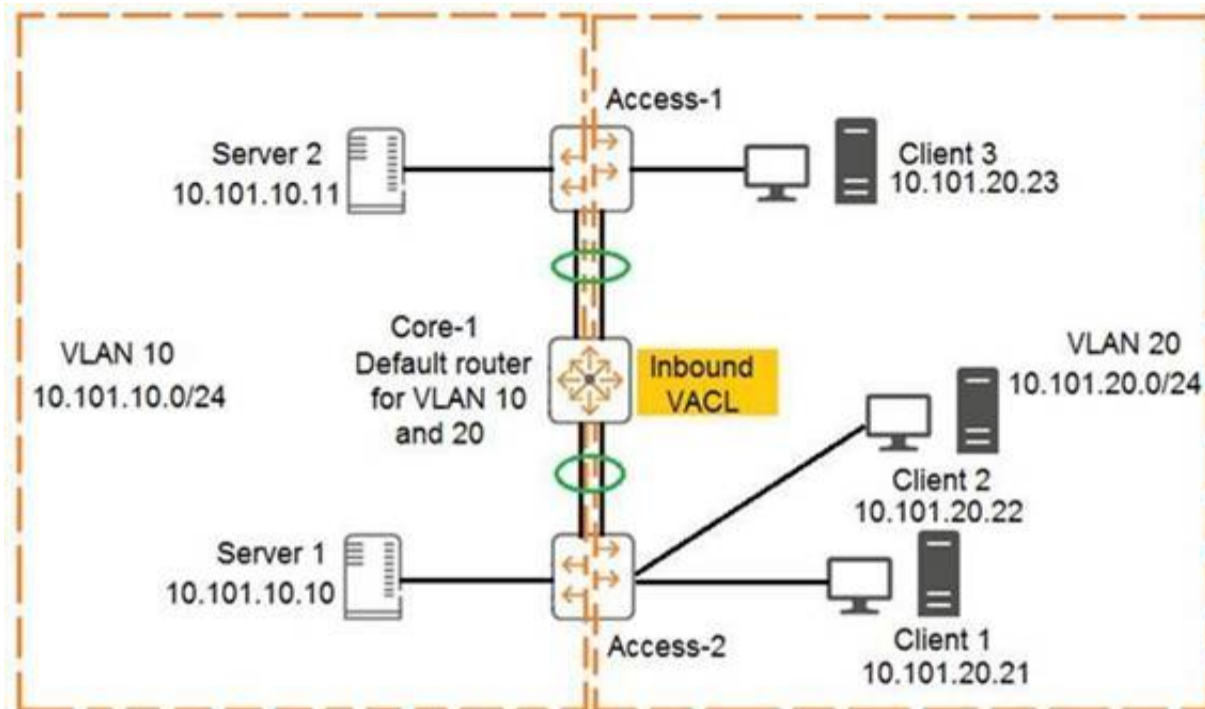
Exam Questions HPE6-A73

Aruba Certified Switching Professional Exam



NEW QUESTION 1

Examine the network exhibit:



The ACL configuration defined on Core-1 is as follows:

```
Core-1(config)# access-list ip example
Core-1(config-acl-ip)# permit ip 10.101.20.21/32 any eq 23
Core-1(config-acl-ip)# permit ip 10.101.20.21/32 eq 23 any
Core-1(config-acl-ip)# exit
Core-1(config)# vlan 20
Core-1(config-if)# apply access-list example in
```

The ACL configuration defined on Core-1 is as follows:

If telnet was being used, which device connection would be permitted and functional in both directions? (Choose two.)

- A. Client 3 to Client 2
- B. Client 1 to Client 2
- C. Server 2 to Client 2
- D. Server 1 to Client 1
- E. Client 1 to Client 3

Answer: BD

Explanation:

CL3 - CL2 - drop on forward path by core1 cause match VLAN 20 and CL3 not CL1 as SRC IP CL1 - CL2 - pass - no ACL cause forwarded by Access2
 SR2 - CL2 - pass on forward path by core1 cause match VLAN 10
 Drop on return path by core1 cause match VLAN 20 and no CL1 as SRC IP SR1 - CL1 - pass on forward path by core1 cause match VLAN 10
 pass on return path by core1 cause match VLAN 20 and CL1 as SRC IP
 CL1 - CL3 - pass on forward path by core1 cause match VLAN 20 and CL1 as SRC IP drop on return path by core1 cause match VLAN 20 and not CL1 but CL3 as SRC IP

NEW QUESTION 2

What is a concept associated with PIM sparse mode (SM)?

- A. Reverts to forwarding when the pruning state times out.
- B. Requires periodic joins to maintain the shortest path tree (SPT).
- C. Recommended for use when high bandwidth connections exist.
- D. Implements a push content to forward traffic from the multicast source.

Answer: B

Explanation:

<https://www.youtube.com/watch?v=PhzMtUcS6UA>

NEW QUESTION 3

Which protocol does NetEdit use to discover devices in a subnet during the discovery process?

- A. LLDP
- B. ARP
- C. DHCP
- D. ICMP

Answer: A

NEW QUESTION 4

When cutting and pasting configurations into NetEdit, which character is used to enter commands within the context of the previous command?

- A. <ESC>

- B. ">"
- C. Space
- D. Tab

Answer: D

NEW QUESTION 5

The AOS-CX mobile app allows a network engineer or technician to perform which tasks? (Choose two.)

- A. Use NetEdit to manage switch configuration.
- B. Create a stack of AOS-CX switches.
- C. Transfer files between the switch and your mobile device.
- D. Securely access the switch using SSH.
- E. Schedule an operating system upgrade.

Answer: BC

Explanation:

ACSP Study Guide Page 66 - Key Features (Transfer files between the switch and your mobile device)

NEW QUESTION 6

An administrator is managing a network comprised of AOS-CX switches deployed at the aggregation layer. The switches are paired in a VSX stack and run the OSPF routing protocol. The administrator is concerned about how long it takes for OSPF to converge when one of the VSX switches has to reboot. What should the administrator do to speed up the OSPF convergence of the switch that is rebooting?

- A. Change the VSXISL link from an OSPF broadcast link point-to-point.
- B. Implement graceful restart on the VSX switches and their neighboring OSPF switches.
- C. Decrease the VSX initial synchronization timer on the two VSX switches.
- D. Define non-backbone areas on the VSX switches as totally stubby areas.

Answer: B

NEW QUESTION 7

Which protocol should be configured to allow NetEdit to discover third-party devices?

- A. SNMP
- B. SSH
- C. HTTPS
- D. HTTP

Answer: A

NEW QUESTION 8

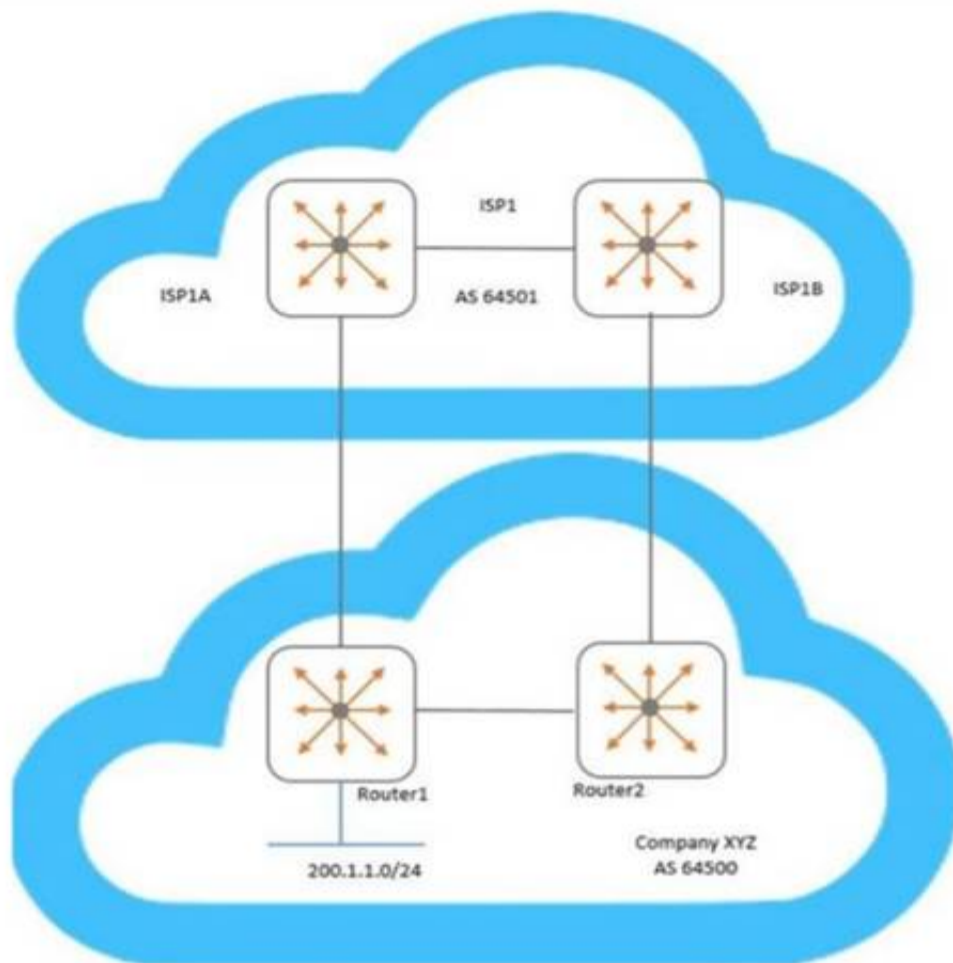
An administrator is configuring BGP and has two connections to a service provider to two different local routers. Which BGP metric should the administrator configure to influence which local router the service provider will use to reach certain routes?

- A. Weight
- B. Multiple exit discriminator
- C. Local preference
- D. Origin

Answer: C

NEW QUESTION 9

Examine the network topology.



Company XYZ has two connections to a service provider (ISP1). Here is the configuration of Router1:

```
Router1(config)# ip prefix-list AS64500-routes permit 200.1.1.0/24
Router1(config)# route-map To-AS64501 permit seq 10
Router1(config-route-map)# match ip address prefix-list AS64500-routes
Router1(config-route-map)# set metric 100
Router1(config-route-map)# exit
Router1(config)# router bgp 64500
Router1(config-bgp)# address-family ipv4 unicast
Router1(config-bgp-ipv4-uc)# neighbor 192.168.1.1 route-map To-AS64501 out
```

Here is the configuration of Router2:

```
Router2(config)# ip prefix-list AS64500-routes permit 200.1.1.0/24
Router2(config)# route-map To-AS64501 permit seq 10
Router2(config-route-map)# match ip address prefix-list AS64500-routes
Router2(config-route-map)# set metric 200
Router2(config-route-map)# exit
Router2(config)# router bgp 64500
Router2(config-bgp)# address-family ipv4 unicast
Router2(config-bgp-ipv4-uc)# neighbor 192.168.2.1 route-map To-AS64501 out
```

Based on configuration of Router1 and Router2, which BGP metric is being manipulated?

- A. Weight
- B. Multiple exit discriminator
- C. Local preference
- D. AS path length

Answer: B

NEW QUESTION 10

Examine the VSX-related configuration of the core layer AOS-CX switch:

```
ICX-Tx-Core1(config)# vrf KA
ICX-Tx-Core1(config)# interface 1/1/45
ICX-Tx-Core1(config-if-1/1/45)# no shutdown
ICX-Tx-Core1(config-if-1/1/45)# vrf attach KA
ICX-Tx-Core1(config-if-1/1/45)# ip address 192.168.0.0/31
ICX-Tx-Core1(config-if-1/1/45)# exit
ICX-Tx-Core1(config)# interface lag 256
ICX-Tx-Core1(config-if)# no shutdown
ICX-Tx-Core1(config-if)# no routing
ICX-Tx-Core1(config-if)# vlan trunk native 1
ICX-Tx-Core1(config-if)# vlan trunk allowed all
ICX-Tx-Core1(config-if)# lacp mode active
ICX-Tx-Core1(config-if)# exit
ICX-Tx-Core1(config)# interface 1/1/46-1/1/47
ICX-Tx-Core1(config-if-<1/1/46-1/1/47>)# mtu 9198
ICX-Tx-Core1(config-if-<1/1/46-1/1/47>)# exit
ICX-Tx-Core1(config)# vsx
ICX-Tx-Core1(config-vsx)# inter-switch-link lag 256
ICX-Tx-Core1(config-vsx)# role primary
ICX-Tx-Core1(config-vsx)# vsx-sync vsx-global
ICX-Tx-Core1(config-vsx)# exit
ICX-Tx-Core1(config)# vsx
ICX-Tx-Core1(config-vsx)# keepalive peer 192.168.0.1 source 192.168.0.0 vrf KA
ICX-Tx-Core1(config-vsx)# exit
ICX-Tx-Core1(config)# interface lag 1 multi-chassis
ICX-Tx-Core1(config-lag-if)# no routing
ICX-Tx-Core1(config-lag-if)# vlan access 1
ICX-Tx-Core1(config-lag-if)# lacp mode active
ICX-Tx-Core1(config-lag-if)# exit
ICX-Tx-Core1(config)# int 1/1/1
ICX-Tx-Core1(config-if)# description access1
ICX-Tx-Core1(config-if)# lag 1
ICX-Tx-Core1(config-if)# no shutdown
ICX-Tx-Core1(config-if)# exit
```

A network administrator is troubleshooting a connectivity issue involving the VSX LAG (link aggregation) between the core and access layer switch, during HW replacement of one of the core switches.

Which configuration should the administrator add to the core switch to fix this issue?

- A. ICX-Tx-Core1(config)# vsxICX-Tx-Core1(config-vsx)# system-mac 02:01:00:00:01:00
- B. ICX-Tx-Core1(config)# interface lag 1 multi-chassis ICX-Tx-Core1(config-if-lag-if)# mtu 9198
- C. ICX-Tx-Core1(config)# interface 1/1/46-1/1/47ICX-Tx-Core1(config-if-vlan)# active-gateway ip 10.1.11.1 mac 02:02:00:00:01:00
- D. ICX-Tx-Core1(config)# interface 1/1/45ICX-Tx-Core1(config-if-vlan)# active-gateway ip 192.168.0.0 mac 02:02:00:00:01:00

Answer: D

NEW QUESTION 10

An administrator wants to drop traffic from VLAN 6 (10.1.6.0/24) to VLAN 5 (10.1.5.0/24), but allow all other traffic. What is correct configuration to accomplish this?

- A.
- ```
class ip VLAN5
 10 match ip 10.1.6.0/24 10.1.5.0/24
exit
policy VLAN5
 10 class ip VLAN5 action drop
exit
interface vlan 5
 apply access-list ip VLAN5 in
```
- B.
- ```
access-list ip VLAN5
 10 permit ip 10.1.6.0/0.0.0.255 10.1.5.0/0.0.0.255
 20 permit ip any any
exit
interface vlan 5
  apply access-list ip
  VLAN5 in
exit
```
- C.
- ```
access-list ip VLAN5
 10 deny ip 10.1.6.0/24 10.1.5.0/24
 20 permit ip any any
exit
interface vlan 5
 apply access-list ip VLAN5 in
exit
```
- D.
- ```
class ip VLAN5
 10 match ip 10.1.6.0/24 10.1.5.0/24
exit
policy VLAN5
 10 class ip VLAN5 action drop
exit
vlan 5
  apply policy VLAN5 in
```

- A. Option A
B. Option B
C. Option C
D. Option D

Answer: C

NEW QUESTION 15

An administrator will be replacing a campus switching infrastructure with AOS-CX switches that support VSX capabilities. The campus involves a core, as well as multiple access layers. Which feature should the administrator implement to allow both VSX-capable core switches to process traffic sent to the default gateway in the campus VLANs?

- A. VRF
B. VRRP
C. IP helper
D. Active gateway

Answer: D

Explanation:

Active gateway = both devices route/forward traffic VRRP = Active-standby, only active member routes/forwards traffic

Understand the Active Gateway principle In a VSX system, active gateway provides redundant default gateway functionality for the end-hosts. The default gateway of the end-host is automatically handled by both the VSX systems.

NEW QUESTION 19

What are best practices when implementing VSX on AOS-CX switches? (Choose two.)

- A. The ISL lag should use the default MTU size.
B. Timers should be left at their default values.
C. The default system MAC addresses should be used.
D. The keepalive connection should use a direct layer-3 connection.
E. The ISL lag should use at least 10GbE links or faster.

Answer: BD

NEW QUESTION 21

In AOS-CX switching, what determines when a frame is forwarded by the switch between the ingress and the egress port?

- A. Egress port
- B. Ingress port
- C. VSX switch tables
- D. Fabric Load Balancer

Answer: B

NEW QUESTION 26

A network engineer is examining NAE graphs from the Dashboard but notices that the time shown in the graph does not represent the current time. The engineer verifies that the AOS-CX switch is configured for NTP and is successfully synchronized. What should be done to fix this issue?

- A. Ensure the engineer's web browser is configured for the same timezone as the AOS-CX switch
- B. Ensure the engineer's PC is synchronized to the same NTP server as the AOS-CX switch
- C. Ensure NetEdit and the AOS-CX switch are synchronized to the same NTP server
- D. Enable trust settings for the AOS-CX switch's SSL certificate

Answer: B

Explanation:

https://techhub.hpe.com/eginfolib/Aruba/OS-CX_10.04/5200-6724/index.html#GUID-2048A4D8-5458-4C00-A

NEW QUESTION 28

An administrator is supporting a network with the access layer consisting of AOS-CX 6300 and 6400 switches. The administrator needs to quickly deploy Aruba IAPs and security cameras in the network, ensuring that the correct QoS and VLAN settings are dynamically applied to the switch ports. Currently, switches are not configured to do device authentication, and no authentication server exists in the network.

Which AOS-CX feature should the administrator use to dynamically assign the policy settings to the correct switch ports?

- A. Device profiles
- B. Change of authorization
- C. Dynamic segmentation
- D. Voice VLANs

Answer: A

NEW QUESTION 31

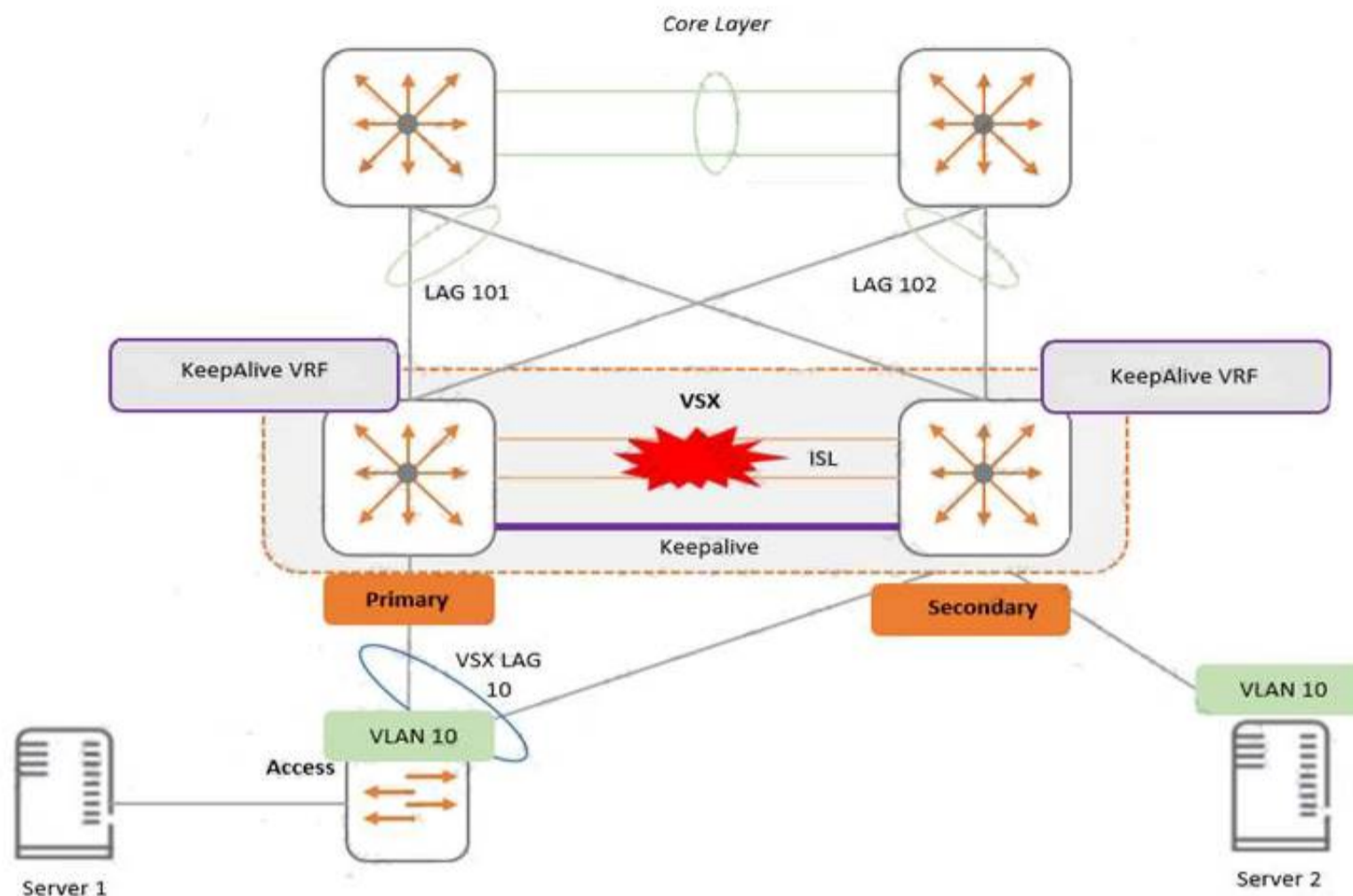
A network administrator is implementing a configuration plan in NetEdit. The administrator used NetEdit to push the configuration plan to the switch. Which option in the NetEdit planning section should the administrator select to save the configuration running on the switch to the startup-config?

- A. EDIT
- B. VALIDATE
- C. COMMIT
- D. DEPLOY

Answer: C

NEW QUESTION 36

Examine the attached diagram



Two AOS-CX switches are configured for VSX at the access layer, where servers attached to them. An SVI interface is configured for VLAN 10 and serves as the default gateway for VLAN 10. The ISL link between the switches fails, but the keepalive interface functions. Active gateway has been configured on the switches. What is correct about access from the servers to the Core?

- A. Server 2 can successfully access the core layer via the keepalive link.
- B. Server 1 and Server 2 can communicate with each other via the core layer.
- C. Server 2 cannot access the core layer.
- D. Server 1 can access the core layer via both uplinks.

Answer: B

NEW QUESTION 40

An administrator creates an ACL rule with both the “count” and “log” option enabled. What is correct about the action taken by an AOS-CX switch when there is a match on this rule?

- A. By default, a summarized log is created every minute with a count of the number of matches
- B. Logging will not include certificate and TLS events, but counting will
- C. The “count” and “log” options are processed by the AOS-CX switch’s hardware ASIC
- D. The total in the “log” record and the count could contain different rule matching statistics

Answer: D

Explanation:

From the "AOS-CX 10.08 ACLs and Classifier Policies Guide" : "You may see a minor discrepancy between the ACL logging statistics and the hit counts statistics due to the time required to record the log message."

NEW QUESTION 44

The company has just upgraded their access layer switches with AOS-CX switches and implemented an AAA solution with ClearPass. The company has become concerned about what actually connects to the user ports on the access layer switch, Therefore, the company is implementing 802.1X authentication on the AOS-CX switches. An administrator has globally enabled 802.1X, and has enabled it on all the access ports connected to user devices, including VoIP phones, security cameras, and wireless Aruba IAPs. Wireless users are complaining that they successfully authenticate to the IAPs; however, they do not have access to network resources. Previously, this worked before 802.1X was implemented on the AOS-CX switches. What should the company do to solve this problem?

- A. Implement device-based mode on the IAP-connected AOS-CX switch ports.
- B. Implement local user roles and local forwarding on the AOS-CX switches.
- C. Implement downloadable user roles and user-based tunneling (UBT) on the AOS-CX switches.
- D. Implement AAA RADIUS change of authorization on the AOS-CX switches.

Answer: C

NEW QUESTION 45

What is true regarding VSX and keepalives on AOS-CX switches?

- A. A separate VLAN on the ISL link is used.
- B. A VSX LAG for the keepalives is a best practice.
- C. The OOBM port must be used.
- D. A 1GbE or faster port is used.

Answer: D

NEW QUESTION 48

An administrator is replacing the current access switches with AOS-CX switches. The access layer switches must authenticate user and networking devices connecting to them. Some devices support no form of authentication, and some support 802.1X. Some ports have a VoIP phone and a PC connected to the same port, where the PC is connected to the data port of the phone and the phone's LAN port is connected to the switch. Which statement is correct about this situation?

- A. 802.1X must be configured to work in fallback mode
- B. Device fingerprinting is required for authentication
- C. The client-limit setting for port access needs to be changed
- D. Device mode should be implemented

Answer: C

Explanation:

fallback mode if for the radius part; client limit is for multiple authentic on one port (ie phone + pc) From doc :

aaa port-access authenticator <port-list> client-limit <1-32>

Used after executing aaa port-access authenticator <port-list> to convert authentication from port-based to user-based. Specifies user-based 802.1X authentication and the maximum number of 802.1X-authenticated client sessions allowed on each of the ports in <port-list>. If a port currently has no authenticated client sessions, the next authenticated client session the port accepts determines the untagged VLAN membership to which the port is assigned during the session. If another client session begins later on the same port while an earlier session is active, the later session will be on the same untagged VLAN membership as the earlier session.

NEW QUESTION 52

A network administrator is implementing BGP for a larger network. The network has over 20 exit points across 15 different BGP routers. The administrator does not want to implement a fully-meshed iBGP peering between all BGP routers.

Which feature should the administrator implement to reduce the number of peers the administrator needs to define?

- A. Next-hop-self
- B. BFD
- C. Peer-Groups
- D. Route reflectors

Answer: C

NEW QUESTION 54

A company has just purchased AOS-CX switches. The company has a free and open-source AAA solution. The company wants to implement access control on the Ethernet ports of the AOS-CX switches.

Which security features can the company implement given the equipment that they are using?

- A. Port-based tunneling
- B. Device fingerprinting
- C. Local user roles
- D. Downloadable user roles

Answer: C

NEW QUESTION 57

Examine the configuration performed on newly deployed AOS-CX switches:

```
Switch(config)# radius-server host cppm key plaintext aruba123 vrf mgmt
Switch(config)# aaa authentication port-access dot1x authenticator radius server-group cppm
Switch(config)# aaa authentication port-access dot1x authenticator enable
Switch(config)# interface 1/1/1 – 1/1/48
Switch(config-if)# aaa authentication port-access dot1x authenticator
Switch(config-if-dot1x-auth)# enable
Switch(config-if-dot1x-auth)# exit
Switch(config-if)# exit
```

After performing this configuration, the administrator notices that the switch ports always remain in the EAP start state. What should the administrator do to fix this problem?

- A. Define the server group cppm
- B. Set the ports to client-mode
- C. Create and assign a local user role to the ports
- D. Enable change of authorization (CoA)

Answer: A

Explanation:

<https://community.arubanetworks.com/blogs/esupport1/2020/04/29/downloadable-user-role-configuration-in-ar>

NEW QUESTION 61

A network engineer for a company with 896 users across a multi-building campus wants to gather statistics on an important switch uplink and create actions based on issues that occur on the uplink. How often does an NAE agent gather information from the current state database in regard to the uplink interfaces?

- A. Once every 60 seconds
- B. Once every 1 second

- C. Once every 30 seconds
- D. Once every 5 seconds

Answer: D

NEW QUESTION 65

.....

Thank You for Trying Our Product

We offer two products:

1st - We have Practice Tests Software with Actual Exam Questions

2nd - Questions and Answers in PDF Format

HPE6-A73 Practice Exam Features:

- * HPE6-A73 Questions and Answers Updated Frequently
- * HPE6-A73 Practice Questions Verified by Expert Senior Certified Staff
- * HPE6-A73 Most Realistic Questions that Guarantee you a Pass on Your FirstTry
- * HPE6-A73 Practice Test Questions in Multiple Choice Formats and Updatesfor 1 Year

100% Actual & Verified — Instant Download, Please Click
[Order The HPE6-A73 Practice Test Here](#)