



Cisco

Exam Questions 350-901

Developing Applications using Cisco Core Platforms & APIs

NEW QUESTION 1

A developer has created an application based on customer requirements. The customer needs to run the application with the minimum downtime. Which design approach regarding high-availability applications, Recovery Time Objective, and Recovery Point Objective must be taken?

- A. Active/passive results in lower RTO and RP
- B. For RPO, data synchronization between the two data centers must be timely to allow seamless request flow.
- C. Active/passive results in lower RTO and RP
- D. For RPO, data synchronization between the two data centers does not need to be timely to allow seamless request flow.
- E. Active/active results in lower RTO and RP
- F. For RPO, data synchronization between the two data centers does not need to be timely to allow seamless request flow.
- G. Active/active results in lower RTO and RP
- H. For RPO, data synchronization between the two data centers must be timely to allow seamless request flow.

Answer: A

NEW QUESTION 2

Which two statements are considered best practices according to the 12-factor app methodology for application design? (Choose two.)

- A. Application code writes its event stream to stdout.
- B. Application log streams are archived in multiple replicated databases.
- C. Application log streams are sent to log indexing and analysis systems.
- D. Application code writes its event stream to specific log files.
- E. Log files are aggregated into a single file on individual nodes.

Answer: AD

NEW QUESTION 3

Which two situations are flagged by software tools designed for dependency checking in continuous integration environments, such as OWASP? (Choose two.)

- A. publicly disclosed vulnerabilities related to the included dependencies
- B. mismatches in coding styles and conventions in the included dependencies
- C. incompatible licenses in the included dependencies
- D. test case failures introduced by bugs in the included dependencies
- E. buffer overflows to occur as the result of a combination of the included dependencies

Answer: AE

NEW QUESTION 4

A network operations team is using the cloud to automate some of their managed customer and branch locations. They require that all of their tooling be ephemeral by design and that the entire automation environment can be recreated without manual commands. Automation code and configuration state will be stored in git for change control and versioning. The engineering high-level plan is to use VMs in a cloud-provider environment then configure open source tooling onto these VMs to poll, test, and configure the remote devices, as well as deploy the tooling itself. Which configuration management and/or automation tooling is needed for this solution?

- A. Ansible
- B. Ansible and Terraform
- C. NSO
- D. Terraform
- E. Ansible and NSO

Answer: B

NEW QUESTION 5

Where should distributed load balancing occur in a horizontally scalable architecture?

- A. firewall-side/policy load balancing
- B. network-side/central load balancing
- C. service-side/remote load balancing
- D. client-side/local load balancing

Answer: B

NEW QUESTION 6

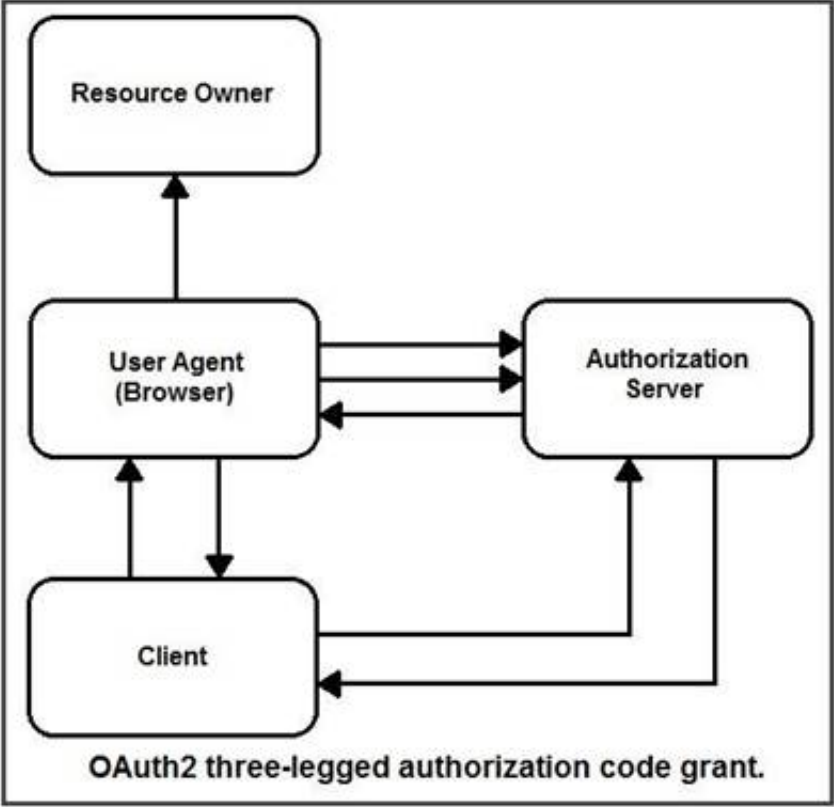
Which two data encoding techniques are supported by gRPC? (Choose two.)

- A. XML
- B. JSON
- C. ASCII
- D. ProtoBuf
- E. YAML

Answer: BE

NEW QUESTION 7

DRAG DROP



Refer to the exhibit. Drag and drop the steps from the left into the correct order of operation on the right for a successful OAuth2 three-legged authorization code grant flow.
Select and Place:

Answer Area

Client initiates the flow.	step 1
The authorization server authenticates the client, validates details sent, and responds with an access token.	step 2
The authorization server redirects the user-agent back to the client using the redirection URI provided.	step 3
The authorization server authenticates the resource owner.	step 4
The client requests an access token from the authorization server's token endpoint.	step 5

- A. Mastered
- B. Not Mastered

Answer: A

Explanation:

Answer Area

Client initiates the flow.	Client initiates the flow.
The authorization server authenticates the client, validates details sent, and responds with an access token.	The authorization server redirects the user-agent back to the client using the redirection URI provided.
The authorization server redirects the user-agent back to the client using the redirection URI provided.	The authorization server authenticates the resource owner.
The authorization server authenticates the resource owner.	The client requests an access token from the authorization server's token endpoint.
The client requests an access token from the authorization server's token endpoint.	The authorization server authenticates the client, validates details sent, and responds with an access token.

NEW QUESTION 8

A developer has completed the implementation of a REST API, but when it is executed, it returns a 401 error message. What must be done on the API to resolve the issue?

- A. Access permission to the resource must be granted, before the request.
- B. Configure new valid credentials.
- C. The requested API endpoint does not exist, and the request URL must be changed.
- D. Additional permission must be granted before the request can submitted.

Answer: D

NEW QUESTION 9

A user is receiving a 429 Too Many Requests error. Which scheme is the server employing that causes this error?

- A. rate limiting
- B. time outs
- C. caching
- D. redirection

Answer: A

NEW QUESTION 10

Refer to the exhibit. An application uses an API to periodically sync a large data set. Based on the HTTP message sequence provided, which statements are true about the caching behavior seen in the scenario? (Choose two.)

- A. The full dataset was transmitted to the client twice.
- B. The dataset changed sometime between message #4 and #5.
- C. A partial dataset was transmitted to the client in message #4.
- D. The dataset did not change during the scenario.
- E. Messages #3 and #5 are equivalent.

Answer: AD

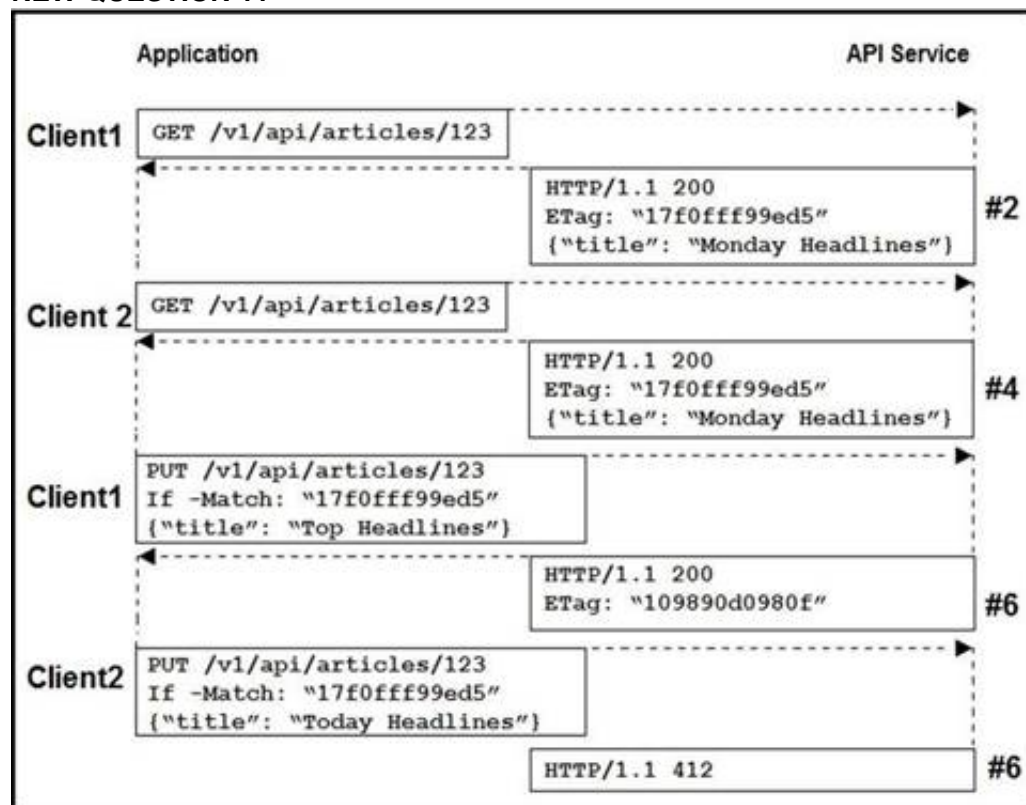
NEW QUESTION 10

Which RFC5988 (Web Linking) relation type is used in the Link header to control pagination in APIs?

- A. rel="index"
- B. rel="page"
- C. rel="next"
- D. rel="section"

Answer: C

NEW QUESTION 11



Refer to the exhibit. Two editors are concurrently updating an article's headline from their mobile devices. What results from this scenario based on this REST API sequence?

- A. The article is marked as "Conflicted"
- B. The article headline is "Monday Headlines"
- C. The article headline is "Today Headlines"
- D. The article headline is "Top Headlines"

Answer: B

NEW QUESTION 14

```

response = requests.get(url)
if response.status_code != 200:
    error_message = "Unexpected HTTP Response code: {}".format(response.status_code)
    raise Exception(error_message)
data = response.json()
    
```

Refer to the exhibit. This snippet of a script has recently started exiting abnormally with an exception stating "Unexpected HTTP Response code: 429". Which solution handles rate limiting by the remote API?

- A.


```
response = requests.get(url)
if response.status_code == 429:
    backoff_seconds = int(response.headers['Retry-After'])
    sleep(backoff_seconds)
elif response.status_code != 200:
    error_message = "Unexpected HTTP Response code: {}".format(response.status_code)
    raise Exception(error_message)
data = response.json()
```

B.

```
response = requests.get(url)
if response.status_code != 200 and response.status_code != 429:
    error_message = "Unexpected HTTP Response code: {}".format(response.status_code)
    raise Exception(error_message)
data = response.json()
```

C.

```
response = requests.get(url)
if response.status_code != 200 and response.status_code != 429:
    backoff_seconds = int(response.headers['Retry-After'])
    sleep(backoff_seconds)
    error_message = "Unexpected HTTP Response code: {}".format(response.status_code)
    raise Exception(error_message)
data = response.json()
```

D.

```
response = requests.get(url)
if response.status_code == 429:
    backoff_seconds = int(response.headers['Retry-After'])
    sleep(backoff_seconds)
    response = requests.get(url)
elif response.status_code != 200:
    error_message = "Unexpected HTTP Response code: {}".format(response.status_code)
    raise Exception(error_message)
data = response.json()
```

Answer: D

NEW QUESTION 15

An application uses OAuth to get access to several API resources on behalf of an end user. What are two valid parameters to send to the authorization server as part of the first step of an authorization code grant flow? (Choose two.)

- A. URI to which the authorization server will send the user-agent back when access is granted or denied
- B. list of the API resources that the application is requesting to access
- C. secret that was generated by the authorization server when the application registered as an OAuth integration
- D. list of scopes that correspond to the API resources to which the application is requesting to access
- E. name of the application under which the application registered as an OAuth integration

Answer: AC

NEW QUESTION 18

Which snippet presents the correct API call to configure, secure, and enable an SSID using the Meraki API?

A.

```
curl -X PUT \
--url 'https://api.meraki.com/api/v0/networks/:networkId/ssids/2' \
-H 'X-Cisco-Meraki-API-Key: 15da0c6ffff295f16267f88f98694cf29a86ed87' \
-H 'Accept: application/json' \
-H 'Content-type: application/json' \
--data-raw '{
  "name": "My SSID",
  "enabled": false,
  "authMode": "psk",
  "encryptionMode": "wpa",
  "psk": "meraki123",
  "wpaEncryptionMode": "WPA1 and WPA2"
}'
```

B.

```
curl -X PUT \
--url 'https://api.meraki.com/api/v0/networks/:networkId/ssids/2' \
-H 'X-Cisco-Meraki-API-Key: 15da0c6ffff295f16267f88f98694cf29a86ed87' \
-H 'Accept: application/json' \
-H 'Content-type: application/json' \
--data-raw '{
"name": "My SSID",
"enabled": true,
"authMode": "psk",
"encryptionMode": "wpa",
"psk": "meraki123",
"wpaEncryptionMode": "WPA1 and WPA2"
}'
```

- C.

```
curl -X PUT \
--url 'https://api.meraki.com/api/v0/networks/:networkId/ssids/2' \
-H 'X-Cisco-Meraki-API-Key: 15da0c6ffff295f16267f88f98694cf29a86ed87' \
-H 'Accept: application/json' \
-H 'Content-type: application/json' \
--data-raw '{
"enabled": true,
"useVlanTagging": true
}'
```
- D.

```
curl -X PUT \
--url 'https://api.meraki.com/api/v0/networks/:networkId/ssids/2' \
-H 'X-Cisco-Meraki-API-Key: 15da0c6ffff295f16267f88f98694cf29a86ed87' \
-H 'Accept: application/json' \
-H 'Content-type: application/json' \
--data-raw '{
"name": "My SSID",
"enabled": true,
}'
```

Answer: B

NEW QUESTION 23

The UCS Python SDK includes modules for Service Profile template creation. Which two UCS Service Profile template types are supported? (Choose two.)

- A. initial-template
- B. updating-template
- C. abstract-template
- D. attached-template
- E. base-template

Answer: AB

NEW QUESTION 27

```
import http.client

conn = http.client.HTTPSConnection("dnac.cisco.com")

headers = {
    '__runsync': "true",
    '__timeout': "30",
    '__persistbapioutput': "true",
}

conn.request("□", "/dna/intent/api/v1/□?timestamp=10000", headers=headers)

res = conn.getresponse()
data = res.read()

print(data.decode("utf-8"))
```

Refer to the exhibit. Which configuration of method and parameter retrieves the health of a laptop connected to the network from Cisco DNA Center?

- A. PUT; network-health;
- B. GET; client-health;
- C. GET; network-device;
- D. POST; network-device;

Answer: C

NEW QUESTION 30

Into which two areas are AppDynamics APIs categorized? (Choose two.)

- A. application-centric
- B. analytics-events
- C. database-visibility
- D. platform-side
- E. agent-side

Answer: DE

NEW QUESTION 32

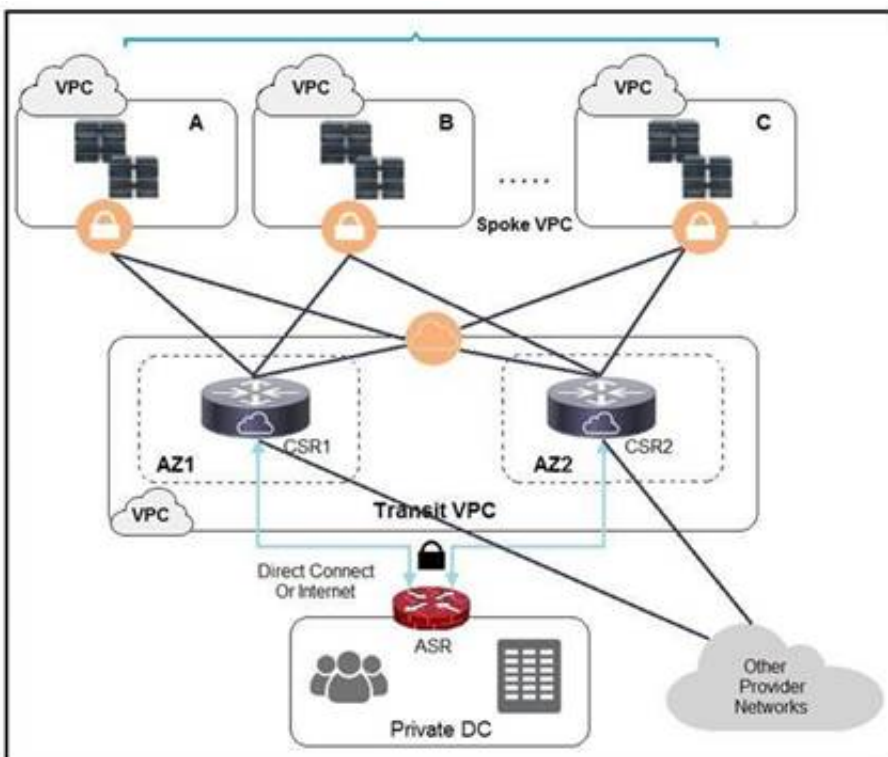
```
node 'default' {
  cisco_yang_netconf { 'my-config':
    target => '<vrf xmlns='http://cisco.com/ns/yang/Cisco-IOS-XR-infra-rsi-cfg'>',
    source => '<vrf xmlns='http://cisco.com/ns/yang/Cisco-IOS-XR-infra-rsi-cfg'>
      <vrf>
        <vrf-name>VOIP</vrf-name>
        <create/>
        <description>Voice over IP</description>
        <vpn-id>
          <vpn-oui>875</vpn-oui>
          <vpn-index>3</vpn-index>
        </vpn-id>
      </vrf>
      <vrf>
        <vrf-name>INTERNET</vrf-name>
        <create/>
        <description>Generic external traffic</description>
        <vpn-id>
          <vpn-oui>875</vpn-oui>
          <vpn-index>22</vpn-index>
        </vpn-id>
      </vrf>
    </vrf>
  }
  mode => ,
  force => ,
}
```

Refer to the exhibit. This script uses ciscoyang to configure two VRF instances on a Cisco IOS-XR device using the Yang NETCONF type. Which two words are required to complete the script? (Choose two.)

- A. ensure
- B. commit
- C. false
- D. replace
- E. none

Answer: CD

NEW QUESTION 33



Refer to the exhibit. A company has extended networking from the data center to the cloud through Transit VPC. Which two statements describe the benefits of this approach? (Choose two.)

- A. Dynamic routing combined with multi-AZ- deployment creates a robust network infrastructure.
- B. VPC virtual gateways provide highly available connections to virtual networks.
- C. Dedicated VPC simplifies load balancing by combining internal and external web services.
- D. VPC virtual gateways provide more secure connections to virtual networks.
- E. Dedicated VPC simplifies routing by not combining this service with other shared services.

Answer: BD

NEW QUESTION 36

A developer has just completed the configuration of an API that connects sensitive internal systems. Based on company policies, the security of the data is a high priority. Which approach must be taken to secure API keys and passwords?

- A. Embed them directly in the code.
- B. Store them in a hidden file.
- C. Store them inside the source tree of the application.
- D. Change them periodically.

Answer: D

NEW QUESTION 40

Which two principles are included in the codebase tenet of the 12-factor app methodology? (Choose two.)

- A. An application is always tracked in a version control system.
- B. There are multiple codebases per application.
- C. The codebase is the same across all deploys.
- D. There can be a many-to-one correlation between codebase and application.
- E. It is only possible to have one application deployment per codebase.

Answer: AE

NEW QUESTION 45

Which two actions must be taken when an observable microservice application is developed? (Choose two.)

- A. Know the state of a single instance of a single service.
- B. Place “try/except” statement in code.
- C. Place log statements in the code.
- D. Use distributed tracing techniques.
- E. Deploy microservice to multiple datacenters.

Answer: BC

NEW QUESTION 50

Which type of file is created from issued intermediate, root, and primary certificates for SSL installation on a server?

- A. DER
- B. CSR
- C. PEM
- D. CRT

Answer: C

NEW QUESTION 54

Which two statements describe advantages of static code analysis over unit tests? (Choose two.)

- A. It checks for potential tainted data where input is not checked.
- B. It enforces proper coding standards and style.
- C. It performs a quick analysis of whether tests will pass or fail when run.
- D. It checks for race conditions in threaded applications.
- E. It estimates the performance of the code when run.

Answer: BC

NEW QUESTION 57


```
apiVersion: v1
clusters:
- cluster:
  certificate-authority: fake-ca-file
  server: https://1.2.3.4
  name: development
- cluster:
  insecure-skip-tls-verify: true
  server: https://5.6.7.8
  name: scratch
contexts:
- context:
  cluster: development
  namespace: frontend
  user: developer
  name: dev-frontend
- context:
  cluster: development
  namespace: storage
  user: developer
  name: dev-storage
- context:
  cluster: scratch
  namespace: default
  user: experimenter
  name: exp-scratch
current context: ""
kind: Config
preferences: {}
users:
- name: developer
  user:
    client-certificate: fake-cert-file
    client-key: fake-key-file
- name: experimenter
  user:
    password: some-password
    username: exp
```

Refer to the exhibit. A kubeconfig file to manage access to clusters is provided. How many clusters are defined and which of them are accessed using username/password authentication versus certificate?

- A. two clusters; scratch
- B. three clusters; scratch
- C. three clusters; development
- D. two clusters; development

Answer: C

NEW QUESTION 59

The response from a server includes the header ETag: W/"7eb8b94419e371767916ef13e0d6e63d". Which statement is true?

- A. The ETag has a Strong validator directive.
- B. The ETag has a Weak validator directive, which is an optional directive.
- C. The ETag has a Weak validator directive, which is a mandatory directive.
- D. The ETag has a Strong validator directive, which it is incorrectly formatted.

Answer: B

NEW QUESTION 62

```
open_file = open("text_file.txt", "r")
read_file = open_file.read()
print(read_file)
```

Refer to the exhibit. a developer created the code, but it fails to execute. Which code snippet helps to identify the issue?

- A.

- ```
try:
 open_file = open("text_file.txt", "r")
 read_file = open_file.read()
 print(read_file)
except:
 print("File not there")
```
- B. 

```
try:
 print("File not there")
except:
 open_file = open("text_file.txt", "r")
 read_file = open_file.read()
 print(read_file)
```
- C. 

```
try:
 open_file = open("text_file.txt", "r")
 read_file = open_file.read()
 print(read_file)
except:
 print("File not there")
catch:
 error(read_file)
```
- D. 

```
open_file = open("text_file.txt", "r")
read_file = open_file.read()
try:
 print(read_file)
except:
 print("File not there")
```

**Answer:** C

#### NEW QUESTION 66

A heterogeneous network of vendors and device types needs automating for better efficiency and to enable future automated testing. The network consists of switches, routers, firewalls and load balancers from different vendors, however they all support the NETCONF/RESTCONF configuration standards and the YAML models with every feature the business requires. The business is looking for a buy versus build solution because they cannot dedicate engineering resources, and they need configuration diff and rollback functionality from day 1.

Which configuration management for automation tooling is needed for this solution?

- A. Ansible
- B. Ansible and Terraform
- C. NSO
- D. Terraform
- E. Ansible and NSO

**Answer:** E

#### NEW QUESTION 69

An automated solution is needed to configure VMs in numerous cloud provider environments to connect the environments to an SDWAN. The SDWAN edge VM is provided as an image in each of the relevant clouds and can be given an identity and all required configuration via cloud-init without needing to log into the VM once online.

Which configuration management and/or automation tooling is needed for this solution?

- A. Ansible
- B. Ansible and Terraform
- C. NSO
- D. Terraform
- E. Ansible and NSO

**Answer:** E

#### NEW QUESTION 70

A developer needs to configure an environment to orchestrate and configure. Which two tools should be used for each task? (Choose two.)

- A. Puppet for orchestration
- B. Terraform for orchestration
- C. Terraform for configuration
- D. Ansible for orchestration
- E. Ansible for configuration

**Answer:** BE

#### NEW QUESTION 74

.....

## Thank You for Trying Our Product

### We offer two products:

1st - We have Practice Tests Software with Actual Exam Questions

2nd - Questons and Answers in PDF Format

### 350-901 Practice Exam Features:

- \* 350-901 Questions and Answers Updated Frequently
- \* 350-901 Practice Questions Verified by Expert Senior Certified Staff
- \* 350-901 Most Realistic Questions that Guarantee you a Pass on Your FirstTry
- \* 350-901 Practice Test Questions in Multiple Choice Formats and Updatesfor 1 Year

**100% Actual & Verified — Instant Download, Please Click**  
**[Order The 350-901 Practice Test Here](#)**