

# Microsoft

## Exam Questions PL-100

Microsoft Power Platform App Maker



**NEW QUESTION 1**

DRAG DROP - (Topic 4)

You are developing an app that warehouse workers will run on their phones to perform inventory counts.

You need to design the app.

Which type of control should you use? To answer, drag the appropriate control types to the correct requirements. Each control type may be used once, more than once, or not at all. You may need to drag the split bar between panes or scroll to view content.

NOTE: Each correct selection presents a complete solution.

Control types	Answer Area
<div>Text box</div>	
<div>Combo box</div>	
<div>Slider</div>	
<div>Radio</div>	

Requirement	Control type
Capture decimal numbers.	<div></div>
Select multiple products from a list.	<div></div>
Set the status of a product.	<div></div>

- A. Mastered
- B. Not Mastered

Answer: A

Explanation:

Control types	Answer Area
<div>Text box</div>	
<div>Combo box</div>	
<div>Slider</div>	
<div>Radio</div>	

Requirement	Control type
Capture decimal numbers.	<div>Text box</div>
Select multiple products from a list.	<div>Combo box</div>
Set the status of a product.	<div>Radio</div>

**NEW QUESTION 2**

DRAG DROP - (Topic 4)

You have a basic user security role in a test environment. You create a canvas app without customization in the environment.

You need to send the app to production administrators for production deployment. Which three actions should you perform in sequence? To answer, move the appropriate

actions from the list of actions to the answer area and arrange them in the correct order.

Actions	Answer Area
<div>Add the app to the solution.</div>	
<div>Export the solution.</div>	
<div>Send the solution to production administrators.</div>	
<div>Select the canvas app in the Maker portal.</div>	
<div>Export the package.</div>	
<div>Send the package to production administrators.</div>	

- A. Mastered
- B. Not Mastered

Answer: A

Explanation:

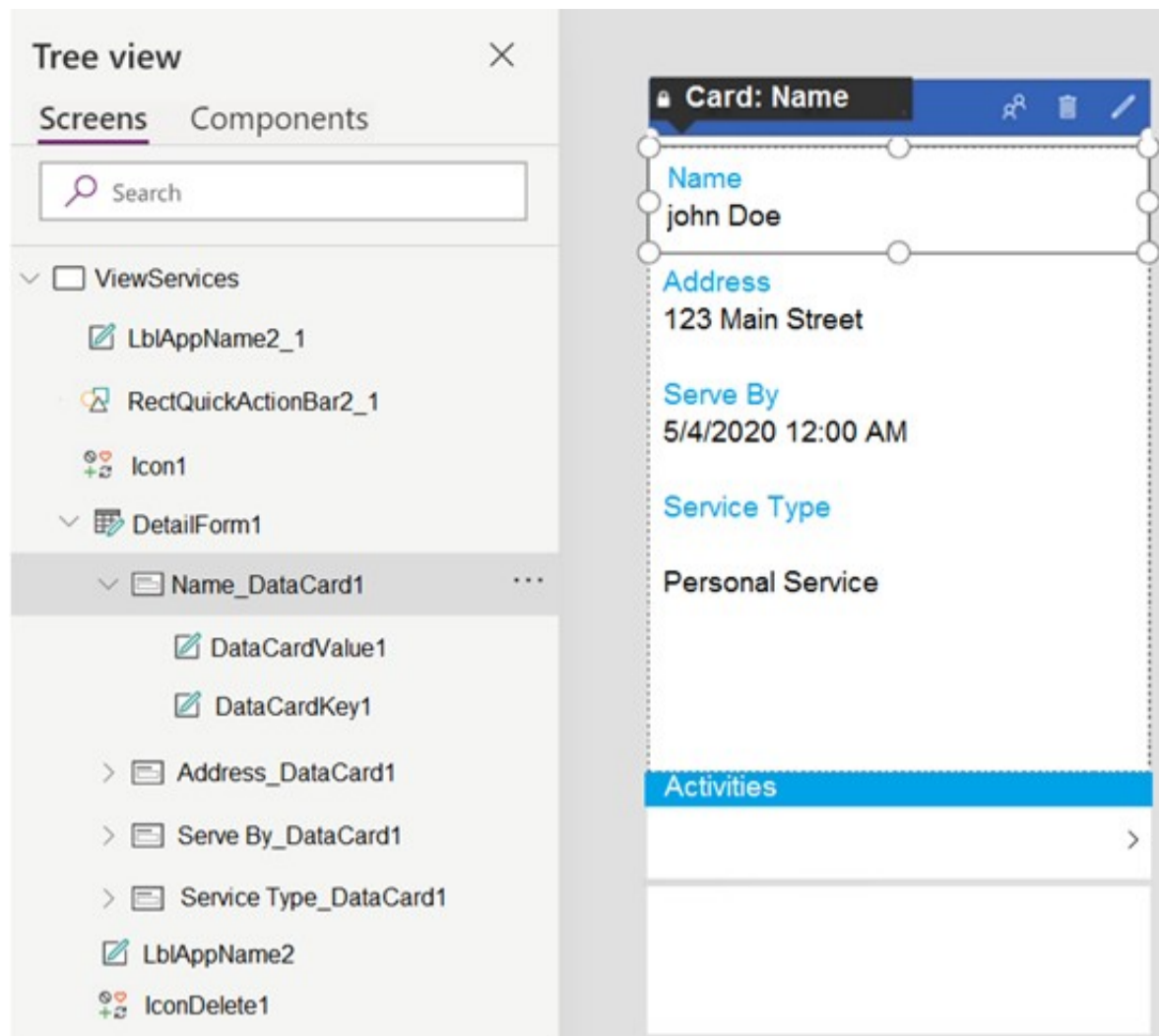
Actions	Answer Area
<div>Add the app to the solution.</div>	
<div>Export the solution.</div>	
<div>Send the solution to production administrators.</div>	
<div>Select the canvas app in the Maker portal.</div>	<div>Select the canvas app in the Maker portal.</div>
<div>Export the package.</div>	<div>Export the package.</div>
<div>Send the package to production administrators.</div>	<div>Send the package to production administrators.</div>

**NEW QUESTION 3**

HOTSPOT - (Topic 4)

You create a canvas app for a service company.

Using the Tree view, you navigate to the ViewServices screen. The screen contains a form named DetailForm1 that only contains Label controls. You add the People icon to the header of the ViewServices screen as shown below:



When you select the icon a new Activity form opens. You must set the value of the Name field on the new Activity form to the value of the name field from DetailForm1.

Use the drop-down menus to select the answer choice that answers each question based on the information presented in the graphic.

NOTE: Each correct selection is worth one point.

Which formula must you enter in the Name field on the Activity form to default the Name from DetailForm1?

▼

Name\_DataCard1.Default

Name\_DataCardKey1.Default

Name\_DataCardValue1.Default

Which action should you perform on the People icon?

▼

In the On Select property, set the Activity form to Edit mode.

In the On Select property, set the Activity form to View mode.

Move the icon to the Activity form and set the On Select property to the Activity screen.

Move the icon to the DetailForm1 and set the On Select property to open the Activity screen.

- A. Mastered
- B. Not Mastered

**Answer: A**

**Explanation:**

Box 1: Name\_DataCardValue1.Default

Box 2: Move the icon to the Activity form and set the On Select property to the Activity screen.

The Select function simulates a select action on a control as if the user had clicked or tapped the control. As a result, the OnSelect formula on the target control is evaluated.

**NEW QUESTION 4**

- (Topic 4)

You are an app designer for a hotel.

The hotel wants to create an app to help the housekeeping staff schedule work. You need to create a new environment for the app.

Where should you create the environment?

- A. Power Platform Admin center
- B. Power Apps Maker portal
- C. Dynamics 365 Admin center

**Answer: A**

**Explanation:**

Manage environment in the Power Platform admin center. Reference:

<https://docs.microsoft.com/en-us/power-platform/admin/create-environment>

**NEW QUESTION 5**

- (Topic 4)

A large construction company has 120 departments. Each department has a Microsoft Teams channel. The company creates training content for each department. All training content for a department is hosted in the channel for that department. You must create a chatbot for the company that helps employees find relevant training. Employees must not be able to modify the chatbot. You need to create the chatbot. Which three actions should you perform? Each correct answer presents part of the solution. NOTE: Each correct selection is worth one point.

- A. Create a bot for each departmental channel.
- B. Create one training bot for organization-wide deployment.
- C. Create an entity for each department.
- D. Create a topic for each department.
- E. Create a topic for each trade.

**Answer:** BCD

#### NEW QUESTION 6

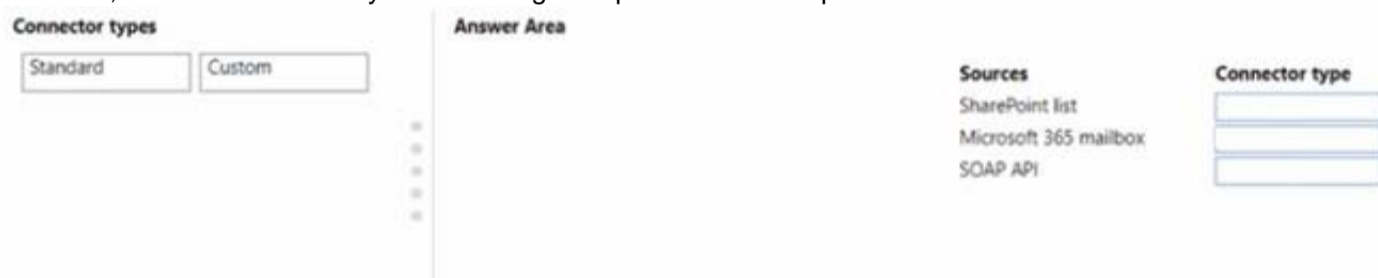
DRAG DROP - (Topic 4)  
 : 186 DRAG DROP

A company uses Power Apps. The company requires a canvas app that connects to the following sources:

- SharePoint list
- Microsoft 365 mailbox
- SOAP API

You need to select connector types.

Which connector types should you use? To answer, drag the appropriate connector types to the correct sources. Each connector type may be used once, more than once, or not at all. You may need to drag the split bar between panes or scroll to view content.



- A. Mastered
- B. Not Mastered

**Answer:** A

#### Explanation:



#### NEW QUESTION 7

- (Topic 4)

You create a dashboard in Power BI. You share the dashboard with the sales team. Sales team members report that they can see information for the entire company. You need to ensure that the team is able to see only data for their team. Where must you configure this restriction?

- A. Dashboard
- B. Report
- C. Dataset
- D. Settings

**Answer:** C

#### Explanation:

Restrict access to the dataset.

Note: Another way of setting access is through manage permission in the dashboard, report, or dataset. If you share a dashboard, by default the report and the dataset will also be shared as read-only for users.

Reference:

<https://radacad.com/dashboard-sharing-and-manage-permissions-in-power-bi-simple-but-useful>

#### NEW QUESTION 8

DRAG DROP - (Topic 4)

You are developing a Power BI report for a company.

The Power BI report must display company performance metrics in Power BI service. The report must include three fields in a visualization. The data for the report exists in a dataset.

The company will display the report on a large television screen during team meetings. You need to create the report.

Which four actions should you perform in sequence? To answer, move the appropriate actions from the list of actions to the answer and arrange them in the correct order.

Actions

Add the report to a new dashboard

Create a report

Add a visualization to the report

Create a paginated report

Select a dataset

Answer Area

>

<

&u2191

⇊

- A. Mastered
- B. Not Mastered

Answer: A

Explanation:

Box 1: Select a dataset  
Sign in to your Power BI online account, or sign up, if you don't have an account yet. Open the Power BI service.  
Get some data and open it in report view.  
Box 2: Create a report  
Use that data to create visualizations and save it as a report. Box 3: Add a visualization to the report  
Box 4: Add the report to a new dashboard  
Visualizations (known as visuals for short) display insights that have been discovered in the data. A Power BI report might have a single page with one visual or it might have pages full of visuals. In the Power BI service, visuals can be pinned from reports to dashboards.

NEW QUESTION 9

- (Topic 4)  
A company receives its marketing campaign performance report as a Microsoft Excel file. The company stores the file in Microsoft SharePoint.  
A user updates the Excel file daily with updated data.  
The company needs a solution that automatically displays the latest analytics.  
You need to create a basic report that contains pie charts that display the most profitable channels.  
You need to propose the right solution.  
Solution: Model-driven application using native charts. Does the solution meet the goal?

- A. Yes

Answer: B

NEW QUESTION 10

DRAG DROP - (Topic 4)  
A company plans to use Microsoft Power Platform to modernize their business.  
Sales commissions are given only to the representatives who sell items from a designated category of products. The company wants to minimize the effort needed to manage data security.  
You need to describe how to store real-world objects to the business stakeholders.  
What should you use? To answer, drag the appropriate tables to the correct objects. Each table may be used once, more than once, or not at all. You may need to drag the split bar between panes or scroll to view content.  
NOTE: Each correct selection is worth one point.

Tables

Organization-owned standard table

User-owned standard table

Activity table

Virtual table

Answer Area

Object

Item manufacturer

Item model

Item inventory

Table

- A. Mastered
- B. Not Mastered

Answer: A

Explanation:

Tables

Organization-owned standard table

User-owned standard table

Activity table

Virtual table

Answer Area

Object

Item manufacturer

Item model

Item inventory

Table

Organization-owned standard table

User-owned standard table

Virtual table

#### NEW QUESTION 10

DRAG DROP - (Topic 4)

You create an expense claim app for a manufacturing company. Employees use the app to enter details of their expenses and upload receipts.

The company has an on-premises finance system with no APIs.

The company requires an automation to enable the manager to approve employee claim requests when they are submitted.

After a claim request is approved, the expense details must be entered in the on-premises finance system.

You need to create the flow.

Which flow type should you use for each requirement? To answer, select the appropriate options in the answer area.

NOTE: Each correct selection is worth one point.

Flow types

Requirement	Flow type
Approve employee claim requests when they are submitted.	<div>Automated flow</div> <div>Automated flow</div> <div>Scheduled flow</div> <div>Instant flow</div>
Enter the expense details in the on-premises finance system.	<div>Cloud flow</div> <div>Cloud flow</div> <div>Desktop flow</div> <div>Business process flow</div>

- A. Mastered
- B. Not Mastered

**Answer:** A

**Explanation:**

Flow types

Requirement	Flow type
Approve employee claim requests when they are submitted.	<div>Automated flow</div>
Enter the expense details in the on-premises finance system.	<div>Cloud flow</div>

#### NEW QUESTION 14

- (Topic 4)

You are an app maker. You are creating a canvas app. You do not have access to Power BI.

You need to add charts to the app.

Which three chart types can you add directly to the canvas app? Each correct answer presents a complete solution.

NOTE: Each correct selection is worth one point.

- A. pie
- B. area
- C. funnel
- D. column
- E. line

**Answer:** ADE

**Explanation:**

You can use line charts, pie charts, and bar charts to display your data in a canvas app. Add a bar chart to display your data:

\* 1. On the Home tab, add a screen.

\* 2. On the Insert tab, select Charts, and then select Column Chart.

Reference:

<https://docs.microsoft.com/en-us/powerapps/maker/canvas-apps/use-line-pie-bar-chart>

#### NEW QUESTION 18

- (Topic 4)

A company uses Power Apps and Microsoft Dataverse. The company has a managed solution in the production environment

You make changes to the solution in the development environment. Some components are unused. The changes to the solution must be reflected in the production environment

You need to ensure that all unused components are removed. What should you do?

- A. Create a new solution
- B. Upgrade the solution.
- C. Update the solution.
- D. Patch the solution.

**Answer:** B

#### NEW QUESTION 23

DRAG DROP - (Topic 4)

You are designing a data model for a new app. The app will be supported by two tables. TableA will contain data that is unique to your industry. TableB will provide access to readonly data from an Azure SQL database.

You need to configure the tables.

Which table type should you use? To answer, drag the appropriate table types to the correct tables. Each table type may be used once, more than once, or not at all. You may need to drag the split bar between panes or scroll to view content.  
NOTE: Each correct selection is worth one point.

Table types

Custom

Standard

Virtual

Answer Area

Table

TableA

TableB

Table type

- A. Mastered
- B. Not Mastered

Answer: A

Explanation:

Table types

Custom

Standard

Virtual

Answer Area

Table

TableA

TableB

Table type

Custom

Virtual

NEW QUESTION 24

- (Topic 3)  
You need to resolve the instructor's issue and ensure that the same issue does not occur again. What should you use?

- A. Gallery
- B. Combo box
- C. Custom component
- D. Choices

Answer: D

NEW QUESTION 29

HOTSPOT - (Topic 2)  
You need to implement features for the solution.  
Which Power Platform component should you use for each feature? To answer, select the appropriate options in the answer area.  
NOTE: Each correct selection is worth one point.

Feature

Mobile app for Sales Log workbook

Embed KPIs for sales quotas by region

Transfer of key sales information to the Job Setup entity

Component

Canvas app

Model-driven app

Power Virtual Agents chatbot

Content Pack

Power BI Desktop

Power BI service

Power Automate

Business process flow

Power Virtual Agents

- A. Mastered
- B. Not Mastered

Answer: A

Explanation:

Box 1: Model-driven app  
The Sales app must meet the following requirements:  
? Provide a central location for all sales pipeline and quote information that is easily accessible and maintains all of the versions of the estimate, quote, and engineering documents.  
Compared to canvas apps, model-driven apps in PowerApps are based on underlying data — specifically, the data stored in Common Data Service (CDS).  
Box 2: Power BI Desktop  
You can create a KPI in Power BI Desktop.

? Open your report editor in Power BI Desktop then select a report on which you are working.  
? On your right, you will see a Visualizations pane and a Fields pane.  
? From the Visualizations pane, select the KPI visual.  
? Etc.

Box 3: Power Automate

**NEW QUESTION 30**

- (Topic 2)

You need to resolve the user's issue with the time tracking app.

Which two actions should you perform? Each correct answer presents part of the solution.

NOTE: Each correct selection is worth one point.

- A. Add a component to the time tracking screen for tracking total time.
- B. Create a new component inside of the component library for the time tracking app.
- C. Upload the component to AppSource.
- D. Add the Total Time field to the screen and set the value of the field property to Rollup

**Answer:** AB

**Explanation:**

Scenario Issue: Users want to be able to see their weekly total time entered from all screens.

A component library provides a centralized and managed repository of components for reusability.

Reference:

<https://docs.microsoft.com/en-us/powerapps/maker/canvas-apps/component-library>

**NEW QUESTION 33**

- (Topic 2)

You need to connect to the data source for the Job Setup app. What should you do?

- A. Configure a scheduled synchronization with the Common Data Service database
- B. Configure SQL Server database permissions
- C. Create a stored procedure that retrieves time records for a specific employee
- D. Configure an on-premises data gateway

**Answer:** D

**Explanation:**

Scenario: The Job Setup entity must store its data in the existing on-premises SQL Server instance.

The on-premises data gateway acts as a bridge to provide quick and secure data transfer between onpremises data (data that isn't in the cloud) and several Microsoft cloud services. These cloud services include Power BI, Power Apps, Power Automate, Azure Analysis Services, and Azure Logic Apps. By using a gateway, organizations can keep databases and other data sources on their on-premises networks, yet securely use that on-premises data in cloud services.

Reference:

<https://docs.microsoft.com/en-us/powerapps/maker/canvas-apps/gateway-reference>

**NEW QUESTION 38**

HOTSPOT - (Topic 2)

You need to configure the system to meet the sales requirements.

What should you do? To answer, select the appropriate options in the answer area.

NOTE: Each correct selection is worth one point.

Requirement	Action
Ensure that work estimates are complete before entering estimated sales values into the Sales Log.	<div><div></div><div>Use a Business Process flow</div><div>Use a UI flow</div></div>
Prevent modification of timesheet entries by an employee.	<div><div></div><div>Add a custom control to the Business Process flow</div><div>Use a formula to set the DisplayMode property</div><div>Use a business rule</div></div>

- A. Mastered
- B. Not Mastered

**Answer:** A

**Explanation:**

Box 1: Use a Business Process flow

Scenario: The Sales Log app must enforce process standards related to the completion of estimates and supporting materials needed during the sales lifecycle.

Box 2: Use a formula to set the DisplayMode property

DisplayMode - The mode to use for data cards and controls within the form control. Derived from the Mode property based and cannot be set independently:

Mode	DisplayMode	Description
FormMode.Edit	DisplayMode.Edit	Data cards and controls are editable, ready to accept changes to a record.
FormMode.New	DisplayMode.Edit	Data cards and controls are editable, ready to accept a new record.
FormMode.View	DisplayMode.View	Data cards and controls are not editable and optimized for viewing.

**NEW QUESTION 40**

HOTSPOT - (Topic 2)

You need to create the solution assets.

What should you use to create the visualizations? To answer, select the appropriate options in the answer area.

NOTE: Each correct selection is worth one point.

Dashboard visualization

Sales

▼

Power BI Desktop only

Power BI Service only

Power BI Desktop or Power BI Service

Manufacturing

▼

Power BI Desktop only

Power BI Service only

Power BI Desktop or Power BI Service

Tool

- A. Mastered
- B. Not Mastered

**Answer:** A

**Explanation:**

Box 1: PowerBI Desktop

The Sales dashboard must reside in the Sales channel and must include information about active quotes, sales pipeline, and year-to-date sales KPIs for sales quotas by region.

PowerBI Desktop to support many data source. Box 2: PowerBI Desktop or Power BI Service on

A dashboard that shows a capacity Heat map by month as well as expected sales that are likely to close for the next month. Both support visualizations.

**NEW QUESTION 43**

- (Topic 2)

You need to implement the change requested by the operations manager. Which control should you use?

BF70D5D

- A. Camera
- B. Shape
- C. Add picture
- D. Image

**Answer:** D

**Explanation:**

Scenario: The operations manager asks that the time tracking app display the employee's photo once they have scanned their badge.

Image control in Power Apps is a control that shows an image from, for example, a local file or a data source.

Reference:

<https://docs.microsoft.com/en-us/powerapps/maker/canvas-apps/controls/control-image>

**NEW QUESTION 46**

HOTSPOT - (Topic 2)

You need to meet the requirement for the time tracking app.

Which controls should you use? To answer, select the appropriate options in the answer area.

NOTE: Each correct selection is worth one point.

Requirement	Solution
Automatically record the duration of work when a job number is read.	<div><div></div><div>Card</div><div>Rating</div><div>Slider</div><div>Timer</div></div>
Read the employee's number into the app.	<div><div></div><div>Barcode-scanner</div><div>Card</div><div>Image</div><div>Shape</div></div>
Display a photo of an employee when the employee badge is read.	<div><div></div><div>Camera</div><div>Card</div><div>Icon</div><div>Image</div></div>

- A. Mastered  
B. Not Mastered

**Answer:** A

**Explanation:**

Box 1: Timer

A Timer control in Power Apps is a control that can determine how your app responds after a certain amount of time passes.

Box 2: Barcode scanner

The Barcode scanner control for canvas apps scans barcodes, QR codes, and data-matrix codes on an Android or iOS device.

Box 3: Image

Image control in Power Apps is a control that shows an image from, for example, a local file or a data source.

**NEW QUESTION 48**

- (Topic 2)

You need to modify the entity form to resolve the customer request number issue. What should you do?

- A. Use a calculated field  
B. Change the data type of the customer request number field to Lookup  
C. Change the data type of the customer request number field to Autonumber

**Answer:** C

**Explanation:**

Scenario: Users report that the customer request number is difficult to interpret. They request that you change the number to a system generated sequential number. Autonumber columns are columns that automatically generate alphanumeric strings whenever they are created.

Reference:

<https://docs.microsoft.com/en-us/powerapps/maker/data-platform/autonumber-fields>

**NEW QUESTION 51**

- (Topic 1)

You need to meet the requirements for sales representative that submit status reports. How should you configure the flow?

- A. Add a parallel branch that uses the value of a dynamic content variable  
B. Add a number functions action that evaluates the risk value by using a static variable to determine if an email is required  
C. Add a condition that evaluates the risk value by using a dynamic content variable  
D. Add a data operation action that evaluates a dynamic content variable

**Answer:** C

**Explanation:**

Salespeople often do not set status of RFQs in the Sales Log to Won when a sale is closed and the customer purchase order is received.

Include a dashboard that shows all currently active quotes, their status in the sales cycle, the probability of closing, and estimated manufacturing and installation dates, by customer, product division, status, and salesperson.

**NEW QUESTION 54**

DRAG DROP - (Topic 1)

You need to modify the app design to meet the accessibility needs of the sales associates.

Which properties should you configure? To answer, drag the appropriate properties to the correct restrictions. Each property may be used once, more than once, or not at all. You may need to drag the split bar between panes or scroll to view content.

NOTE: Each correct selection is worth one point.

Properties	Restriction	Property
TabIndex		
DisplayMode	Design for User2	
AccessibleLabel	Design for User3	
Tooltip		

- A. Mastered
- B. Not Mastered

Answer: A

Explanation:

Graphical user interface, text, application Description automatically generated  
Box 1: AccessibleLabel  
Scenario: Before deploying the app to production, you must ensure that the app conforms to Microsoft accessibility and performance guidelines. User2 is visually impaired and cannot see images. AccessibleLabel is a label for screen readers. An empty value for Image, Icon, and Shape controls will hide the controls from screen reader users.  
Box 2: TabIndex  
User3 is unable to use a mouse.  
TabIndex determines if the control participates in keyboard navigation. Keyboard navigation is an important aspect of any app. For many, the keyboard is more efficient than using touch or a mouse. The navigation order should: Mirror what is seen visually. Only have a tab stop at controls that are interactive. Follow either an intuitive across and then down "Z" order or a down and then across "reverse-N" order.

NEW QUESTION 59

- (Topic 4)  
An automobile company uses Power Apps. The company uses a model-driven app to manage customers and repairs. The Customer table has a custom column of type text named Best time to call. On the Repair form, employees require the Best time to call column to be displayed next to the customer name. You need to modify the model-driven app to display the Best time to call column. Which two steps should you perform? Each correct answer presents part of the solution. NOTE: Each correct selection is worth one point.

- A. Add The Best time to call column to the quick view Repair form.
- B. Create a quick view form for the Repair table.
- C. Create a quick view form for the Customer table.

Answer: CD

NEW QUESTION 60

HOTSPOT - (Topic 4)  
You are creating a Power Automate flow. You have an array that contains items with different color attributes. You plan to filter the array by using the following filter expression within the flow: @or(equals(item()['color'], 'red'),contains(item()['color'],'blue')) The filter returns results only when the expression resolves to true. For each of the following statements, select Yes if the statement is true. Otherwise, select No. NOTE: Each correct selection is worth one point.

Statements	Yes	No
The filter expression yields a result if the array contains the color orange	<input type="radio"/>	<input type="radio"/>
The filter expression yields a result if the array contains the color red	<input type="radio"/>	<input type="radio"/>
The filter expression yields a result if the array contains the color sky blue	<input type="radio"/>	<input type="radio"/>

- A. Mastered
- B. Not Mastered

Answer: A

Explanation:

Box 1: No  
Box 2: Yes  
The item color must be red, or item color contains blue. Box 3: Yes

**NEW QUESTION 64**

- (Topic 4)

Note: This question is part of a series of questions that present the same scenario. Each question in the series contains a unique solution that might meet the stated goals. Some question sets might have more than one correct solution, while others might not have a correct solution.

After you answer a question in this section, you will NOT be able to return to it. As a result, these questions will not appear in the review screen.

You are creating a canvas app that displays a list of accounts.

Users must be able to select an account and view details for the account. The app must include a feature that brings the user back to the list of accounts.

You add a blank screen named Screen\_Accounts and add a gallery named and add another blank screen named Screen\_AccountDetail.

You need to complete the app. Solution:

? Add an edit form to Screen\_AccountDetail and set the Default Mode of the form to View.

? Set the OnSelect property of Gallery\_Accounts to Navigate(Screen\_AccountDetail).

? Set the data source of the form to Accounts.

? Set the Item property of the form to Selected.

? Add a back icon on Screen\_AccountDetail and set its OnSelect property to Navigate(Screen\_Accounts).

Does the solution meet the goal?

A. Yes

B. No

**Answer: A**

**Explanation:**

View, edit, or create an item, save the contents, and reset the controls in an Edit form control.

FormMode.View: The form is populated with an existing record but the user cannot modify the values of the fields.

This function is often invoked from the OnSelect formula of a Button or Image control.

Reference:

<https://docs.microsoft.com/en-us/powerapps/maker/canvas-apps/functions/function-form>

**NEW QUESTION 66**

- (Topic 4)

A company uses Power Apps. The company creates a solution that contains the following items:

- environment setting
- flow that accesses Microsoft Dataverse
- plug-in with an unsecure configuration
- environment variable with a default value

The company plans to import solutions manually.

You need to document the solution component type that prompts for user input. Which component type should you document?

A. Environment variable

B. Environment setting

C. Connection reference

**Answer: D**

**NEW QUESTION 71**

- (Topic 4)

A company uses Microsoft Power Platform. You create a solution with components You deploy the solution in the production environment Users report issues with a process. You open the last imported solution. You need to troubleshoot the issue. What should you view?

A. Solution dependencies

B. Solution classic view

C. History

**Answer: D**

**NEW QUESTION 75**

HOTSPOT - (Topic 4)

A coworker creates a canvas app.

The canvas app contains the following formula. The formula is attached to the OnVisible property of the first screen that users see:

```
Collect(
Toolbox,
{
    Tool: "Hammer",
    Quantity: 1
},
{
    Tool: "Screwdriver",
    Quantity: 2
})
```

You are updating the canvas app.

For each of the following statements, select Yes if the statement is true. Otherwise, select No.  
NOTE: Each correct selection is worth one point.

Answer Area	Yes	No
The formula will update multiple records in a data source named Toolbox if the records exist.	<input type="radio"/>	<input type="radio"/>
A local collection is created to store data if a data source named Toolbox does not already exist.	<input type="radio"/>	<input type="radio"/>
If a collection named Toolbox exists the formula will clear any existing records before making any changes.	<input type="radio"/>	<input type="radio"/>

- A. Mastered  
B. Not Mastered

Answer: A

Explanation:

Box 1: No  
Records are added, not updated.  
Box 2: Yes  
The Collect function adds records to a data source. Syntax: Collect( DataSource, Item, ... )  
DataSource – Required. The data source that you want to add data to. If it doesn't already exist, a new collection is created.  
Item(s) - Required. One or more records or tables to add to the data source.  
Box 3: No  
No records are cleared.

NEW QUESTION 76

- (Topic 4)  
DRAG DROP

A company uses Microsoft Power Platform in a production environment. The company is defining new business processes in a prototyping environment. You create components in both environments.  
You need to package the components you create.  
Which solution types should you use? To answer, drag the appropriate solution types to the connect components. Each solution type may be used once, more than once, or not at all. You may need to drag the split bar between panes or scroll to view content.  
NOTE: Each correct selection is worth one point.

Solution types

Managed

Unmanaged

Segmented

Answer Area

Component

Canvas app created in production and used only in production.

Tables created in prototype to allow only new views added in production.

Solution type

- A. Mastered  
B. Not Mastered

Answer: A

Explanation:

Solution types

Managed

Unmanaged

Segmented

Answer Area

Component

Canvas app created in production and used only in production.

Tables created in prototype to allow only new views added in production.

Solution type

Managed

Segmented

NEW QUESTION 80

- (Topic 4)  
You create a custom table as part of a solution in the development environment. You deploy major version solutions as managed solutions to production. The organization does not allow new solutions to be created in the production environment.  
When a minor update is made to a column length, users cannot enter entire values. You need to allow users to enter entire values in the column.  
Solution: Update the column length in the production environment. Does the solution meet the goal?

- A. Yes  
B. No

Answer: B

NEW QUESTION 81

- (Topic 4)  
A company has ten sales regions. Each salesperson is assigned to one region. You create a set of five standard views that all salespeople will use. Sales users only want to see information for their own region. Sales users must call sales leads within a week of receiving a lead.  
You need to recommend a solution for sales users.  
Which two actions will you recommend? Each correct answer presents a complete solution. NOTE: Each correct selection is worth one point.

- A. Instruct users to create personal views that filter by region.  
B. Instruct users to filter the view by region.  
C. Configure the definition for each view to sort by region.  
D. Configure the definition for each view to filter by region.

Answer: BD

**NEW QUESTION 84**

HOTSPOT - (Topic 4)

You create a Power Automate cloud flow that runs when a user creates a Microsoft Dataverse lead record.

The cloud flow must update a custom score column on the lead record based on other column values. The flow must perform the following activities:

- Update the Microsoft Dataverse record.
- Evaluate whether the Microsoft Dataverse record should be updated. You need to configure the flow components.

Which components should you use? To answer, select the appropriate options in the answer area.

NOTE: Each correct selection is worth one point.

Answer Area

Requirement	Component
Update the Microsoft Dataverse record.	<div>Action</div> <div>Action</div> <div>Trigger</div> <div>Function</div>
Evaluate whether the Microsoft Dataverse record should be updated.	<div>Condition</div> <div>Action</div> <div>Condition</div> <div>Data operation</div>

- A. Mastered  
B. Not Mastered

Answer: A

**Explanation:**

Answer Area

Requirement	Component
Update the Microsoft Dataverse record.	<div>Action</div>
Evaluate whether the Microsoft Dataverse record should be updated.	<div>Condition</div>

**NEW QUESTION 87**

DRAG DROP - (Topic 4)

DRAG DROP

You develop Microsoft Power Platform solutions for Contoso, Ltd You create a Power Virtual Agents chatbot in a Microsoft Teams team.

You need to make the chatbot available to all users in your organization.

Which three actions should you perform in sequence? To answer, move all actions from the list of actions to the answer area and arrange them in the correct order.

Actions

Answer area

Access the chatbot in the Teams app store in the Built by your colleagues category.

Publish the chatbot.

Access the chatbot in the Teams app store in the Built for Contoso category.

Submit the chatbot for admin approval.

>

<

&u2191

⇊

- A. Mastered  
B. Not Mastered

Answer: A

**Explanation:**

Actions

Answer area

Access the chatbot in the Teams app store in the Built by your colleagues category.

Publish the chatbot.

Access the chatbot in the Teams app store in the Built for Contoso category.

Submit the chatbot for admin approval.

>

<

&u2191

⇊

**NEW QUESTION 89**

HOTSPOT - (Topic 4)

A company is building a Power Apps app to track key project tasks.

Users assign three tasks a risk status on a scale of 0 to 100 by using slider input controls named RiskStatus on the app. The highest risks use the risk status value of 100.

If the combined value of all the tasks is 150 or above, a header bar on the screen must display the text HIGH RISK.

You need to configure a solution to change the text on the header bar.

How should you configure the app? To answer, select the appropriate options in the answer area.

NOTE: Each correct selection is worth one point.

Requirement	Configuration
Where should you apply logic to change the text?	<div>▼</div> <div> On the header control.  On each RiskStatus slider input.  In the global variables of the Power Apps app.  On the OnStart property of the Power Apps app. </div>
Which formula should you use?	<div>▼</div> <div> SUM(RiskStatus1.value,RiskStatus2.value,RiskStatus3.value)&gt;=150? "HIGH RISK" : " "  IF(SUM(RiskStatus1.value,RiskStatus2.value,RiskStatus3.value)&lt;150, " ", HIGH RISK")  Updateif((RiskStatus1.value+RiskStatus2.value+RiskStatis3.value)&gt;=150, "HIGH RISK")  UpdateContext(IF(RiskStatus1.value+RiskStatus2.value+RiskStatus3.value&gt;=150), "HIGH RISK") </div>

- A. Mastered
- B. Not Mastered

**Answer:** A

**Explanation:**

Box 1: On each RiskStatus slider input  
You can change the value based on input.  
Box 2: Updateif(..)  
Use the Updateif function to modify one or more values in one or more records that match one or more conditions. The condition can be any formula that results in a true or false and can reference columns of the data source by name. The function evaluates the condition for each record and modifies any record for which the result is true.

**NEW QUESTION 91**

DRAG DROP - (Topic 4)  
You are creating entities in a Common Data Service database to capture sales data. You create an entity named Sales that includes the following fields:

Field	Description
SalesPerson	The name of the salesperson who made the sale
Quantity	The number of units sold
Rate	The sale price per unit
GrossAmount	A value obtained by multiplaying the Quantity times the Rate. This value is for display purposes only
DiscountAmount	An amount that a salesperson enters into the app to discount a sale
NetAmount	A value obtained by subtracting the DiscountAmount from the GrossAmount

You create a new entity that includes a field named TotalSales. The field is used to capture the aggregated sales for each salesperson.  
You need to configure the fields for the entities.  
Which field types should you use? To answer, drag the appropriate field types to the correct field names. Each field type may be used once, more than once, or not at all. You may need to drag the split bar between panes or scroll to view content.  
NOTE: Each correct selection is worth one point.

Field types	Answer Area	
	Field name	Field type
Rollup	GrossAmount	Field type
Calculated	DiscountAmount	Field type
Simple	TotalSales	Field type

- A. Mastered
- B. Not Mastered

**Answer:** A

**Explanation:**

Box 1: Calculated  
Calculated columns are calculated in real-time when they are retrieved. Calculated columns can be composed using different data types. For example, an Integer calculated column may reference values from Decimal or Currency columns.  
Box 2: Simple  
A simple column isn't defined as a calculated or rollup column.  
Box 3: Rollup  
Because rollup columns persist in the database, they can be used for filtering or sorting just like regular columns.

**NEW QUESTION 93**

- (Topic 4)

A company uses Microsoft Power Apps.

You need to create a canvas app to display a Microsoft Power BI report. The report must use the context of a selected record in the app. Data in a Power BI control must be filtered to display the context of the selected record.

You need to propose the right solution.

Solution: Add a slicer to a Power BI element on the screen where data is selected. Does the solution meet the goal?

A. Yes

B. No

**Answer: B**

#### NEW QUESTION 96

- (Topic 4)

A company delivers products to multiple communities. The company creates a canvas app connected to a Common Data Service database. The app tracks communities to see where

Drivers must enter delivery information on a form that uses an entity named Delivery. Depot staff must enter information on a pick-up form that uses an entity named Pick-up. Each form contains a community field that is based on a shared list across both forms.

You need to create the community field. Which type of field should you create?

A. local option set

B. text

C. global option set

D. text area

**Answer: C**

#### Explanation:

Can use a global option set, no need to use localized option sets.

Note: In PowerApps Option set is one of the field types you can use in your Entity. The information type that Option Set stores is a list of text values. And here comes the Option Set advantage – once you define its text values you can centrally managed it. Reference:

<https://powerapps.microsoft.com/en-us/blog/option-sets-and-many-to-many-relationships-for-canvas-apps/>

#### NEW QUESTION 100

- (Topic 4)

Note: This question is part of a series of questions that present the same scenario. Each question in the series contains a unique solution that might meet the stated goals. Some question sets might have more than one correct solution, while others might not have a correct solution.

After you answer a question in this section, you will NOT be able to return to it. As a

A company has locations in multiple countries and regions across four continents. The company stores the total amount of each order in the local currency of the country/region where the customer is located. The company stores the applicable exchange rates in a custom US dollars (USD) exchange rate table.

You need to create a visualization that displays the total amount of orders by country/region in USD.

Proposed solution: Create a model-driven chart on the country/region table that aggregates the total amount of the orders by country/region.

Does the solution meet the goal?

A. Yes

B. No

**Answer: B**

#### Explanation:

Instead use a calculated field.

Need to calculate the exchange rate in USD.

Calculated columns are calculated in real-time when they are retrieved.

Reference:

<https://docs.microsoft.com/en-us/powerapps/developer/data-platform/calculated-rollup-attributes>

#### NEW QUESTION 101

DRAG DROP - (Topic 4)

You have the following Common Data Service entities: BusinessContracts and

You need to configure an N:N relationship between the two entities.

Which three actions should you perform in sequence? To answer, move the appropriate actions from the list of actions to the answer area and arrange them in the correct order.

#### Actions

Select **Add relationship** and then select the many-to-many relationship option.

Select the BusinessAccounts entity as the related entity.

Open the relationship tab of the BusinessContracts entity.

Choose the Relationship Name and Relationship Entity Prefix.

#### Answer Area

A. Mastered

B. Not Mastered

**Answer: A**

#### Explanation:

Step 1: Open the relationship tab of the BusinessContracts entity. View entity relationships

From the Power Apps portal, select either Model-driven or Canvas design mode. Select Data > Entities and select the entity that has the relationships you want to view. With the Relationships tab selected, you can select the following views:

Step 2: Select Add relationship.. Create relationships

While viewing entity relationships, in the command bar, select Add relationship and choose Many-to-many.

Step 3: Select the BusinessAccounts entity as the related entity.

#### NEW QUESTION 102

- (Topic 4)

Note: This question is part of a series of questions that present the same scenario. Each question in the series contains a unique solution that might meet the stated goals. Some question sets might have more than one correct solution, while others might not have a correct solution.

After you answer a question in this section, you will NOT be able to return to it. As a result, these questions will not appear in the review screen.

A company has locations in multiple countries and regions across four continents. The company stores the total amount of each order in the local currency of the country/region where the customer is located. The company stores the applicable exchange rates in a custom US dollars (USD) exchange rate table.

You need to create a visualization that displays the total amount of orders by country/region in USD.

Proposed solution:

Create a custom column that converts the order total to USD by using the relationship between order local currency and the USD exchange rate table in Power BI Desktop and display this column in a Power BI chart by country/region.

Does the solution meet the goal?

A. Yes

B. No

**Answer: B**

#### Explanation:

Instead use a calculated field.

Need to calculate the exchange rate in USD.

Calculated columns are calculated in real-time when they are retrieved. Reference:

<https://docs.microsoft.com/en-us/powerapps/developer/data-platform/calculated-rollup-attributes>

#### NEW QUESTION 107

- (Topic 4)

You are creating a canvas app for a company that delivers packages. The app will display one screen for each delivery attempt.

Drivers must make three attempts to deliver a package before returning the package back to a warehouse. Drivers must enter details about delivery on a second screen in the app.

You need to display a list of delivery attempts on the delivery screen.

Which two components can you add to the app to display details about the delivery attempts? Each correct answer presents a complete solution.

NOTE: Each correct selection is worth one point.

A. Data table

B. Vertical gallery

C. Display form

D. Drop-down

**Answer: AC**

#### Explanation:

The Data table control shows a dataset.

In a canvas app, add and configure a Display form control to show all fields in a record. Reference:

<https://docs.microsoft.com/en-us/powerapps/maker/canvas-apps/controls/control-data-table> <https://docs.microsoft.com/en-us/powerapps/maker/canvas-apps/working-with-form-layout>

#### NEW QUESTION 108

- (Topic 4)

You complete work on a new canvas app in a development environment and add the app to a solution. You export the solution from the development environment and import the solution into a production environment.

After several days you notice that the background color for the canvas app in the production environment has changed from white to grey.

You need to determine why the background color changed.

What are two possible causes for the background color change? Each correct answer presents a complete solution.

NOTE: Each correct selection is worth one point.

A. You recently changed the Office 365 theme.

B. You exported a managed copy of the solution and imported the solution as an unmanaged solution.

C. You modified the canvas app in the unmanaged solution.

D. You exported and imported an unmanaged copy of the solution and a co-worker modified the canvas app.

E. You chose a different theme from the Theme menu inside the canvas app.

**Answer: AC**

#### Explanation:

A: You can create a custom look and feel (a theme), for your app by making changes to the default colors and visual elements provided in the uncustomized system.

C: Unmanaged Solution: The beginning state of solution is the unmanaged solution state. During this phase, you can add, edit, update, remove, delete, and test any of the components of the solution. You also have the ability to create restrictions on the components within the solution.

Note: Managed Solution: A managed solution is a finalized solution that can be distributed and installed. They are created by exporting an unmanaged solution by setting restrictions to prevent any further customizations. The whole point of Managed is locking down the Component states so they cannot be edited.

Reference:

<https://powerusers.microsoft.com/t5/Power-Apps-Pro-Dev-ISV/Managed-vs-Unmanaged/td-p/495685>

<https://docs.microsoft.com/en-us/powerapps/maker/model-driven-apps/create-themes-organization-branding>

NEW QUESTION 112

- (Topic 4)

A company is onboarding new workers to the Microsoft Power Platform.  
A user reports an access issue with a Power Apps app. The user provides no additional information about the access issue.  
You need to troubleshoot the app and data security configurations for the user. Which tool should you use?

- A. Azure AD Security review
- B. User information page
- C. Accessibility checker
- D. Run diagnostics

Answer: D

Explanation:

User access diagnostic tool in the Power Platform admin center:  
Several factors influence user access in a Microsoft Dataverse environment. To help administrators with diagnosing user access to an environment and reasons for access or no access, the new “Run diagnostics” feature in the Power Platform admin center provides basic access diagnostics for individual users in the environment. The feature helps to detect potential causes to user sign-in and other issues and suggests potential mitigations.  
Reference:  
<https://docs.microsoft.com/en-us/power-platform/admin/troubleshooting-user-needs-read-write-access-organization>

NEW QUESTION 116

DRAG DROP - (Topic 4)

You perform repeatable tasks using software installed on a home computer. The operating system includes Microsoft Power Automate Desktop.  
You need to decide which tasks to automate using Power Automate Desktop.  
Which tasks can you automate? To answer, drag the appropriate can automate responses to the correct tasks. Each can automate response may be used once, more than once, or not at all. You may need to drag the split bar between panes or scroll to view content  
NOTE: Each correct selection is worth one point.

Options

Yes

No

Answer Area

Task	Can automate
Move files from one folder to another, rename them, and put into archive.	<input type="text"/>
When an email arrives, save attachments from Outlook to your OneDrive folder.	<input type="text"/>
Read product prices from an online shop and add them to an Excel file.	<input type="text"/>
Schedule reading currency exchange rates and save them to an Excel file each day at 7:00 a.m.	<input type="text"/>

- A. Mastered
- B. Not Mastered

Answer: A

Explanation:

Options

Yes

No

Answer Area

Task	Can automate
Move files from one folder to another, rename them, and put into archive.	<div><div>Yes</div></div>
When an email arrives, save attachments from Outlook to your OneDrive folder.	<div><div>Yes</div></div>
Read product prices from an online shop and add them to an Excel file.	<div><div>Yes</div></div>
Schedule reading currency exchange rates and save them to an Excel file each day at 7:00 a.m.	<div><div>Yes</div></div>

NEW QUESTION 119

- (Topic 4)

You are creating an app for a company. You need to evaluate the default solution.  
Which two behaviors should you expect from the default solution? Each correct answer presents a complete solution.  
NOTE: Each correct selection is worth one point.

- A. You can change the prefix of the publisher of the default solution
- B. If you create a Power Automate flow in a solution, the flow uses the prefix defined in the publisher in the publisher
- C. You can change the version number of the default solution

Answer: AC

Explanation:

<https://docs.microsoft.com/en-us/dynamics365/customerengagement/on-premises/customize/use-solutions-for-your-customizations?view=op-9-1>

NEW QUESTION 120

DRAG DROP - (Topic 4)  
 You plan to create apps for a company.  
 You need to identify the Power Platform tools required.  
 What should you use? To answer, drag the appropriate tools to the correct requirements. Each tool may be used once, more than once, or not at all. You may need to drag the split bar between panes or scroll to view content.  
 NOTE: Each correct selection is worth one point.

Tools	Requirement	Tool
Power Virtual Agents bot	Create an app with a customized user interface that allows users to quickly create support tickets.	Tool
Power Automate	Create an app that uses a guided business process to navigate through all records associated with a support ticket.	Tool
Canvas app	Send an email to a customer support manager every time a support ticket is created.	Tool
Model-driven app	Create an automated chat tool that guides a customer through the support ticket creation process.	Tool

- A. Mastered
- B. Not Mastered

Answer: A

**Explanation:**

Box 1: Canvas App  
 Box 2: Model-driven app  
 Model-driven app design is a component-focused approach to app development. Model- driven app design doesn't require code and the apps you make can be simple or very complex. Unlike canvas app development where the designer has complete control over app layout, with model-driven apps much of the layout is determined for you and largely designated by the components you add to the app.  
 Box 3: Power Automate  
 Power Automate is a service that helps you create automated workflows between your favorite apps and services to synchronize files, get notifications, collect data, and more.  
 Box 4: Power Virtual Agents bot  
 When you create bots with Power Virtual Agents, you author and edit topics.

**NEW QUESTION 125**

HOTSPOT - (Topic 4)  
 A company uses Microsoft Power Platform. The company categorizes customers into Specialty shop, Grocery store, Wholesaler, and Seasonal market groups by using a custom choice type column.  
 The staff uses a model-driven app with an interactive dashboard that displays all customer  
 You must update the app to provide the following functionality:  
 • Display selected customers by type in the interactive dashboard.  
 • Search for customers across multiple tables by postal code by entering any number of characters.  
 You need to configure the system.  
 Which configuration options should you use? To answer, select the appropriate options in the answer area.  
 NOTE: Each correct selection is worth one point.

Requirement	Configuration
Display customers by type.	<div> <div>Enable sync with global choice.</div> <div>Enable the global filter.</div> <div>Enable the searchable property.</div> <div>Enable sync with global choice.</div> <div>Enable the sortable property.</div> </div>
Search by postal code.	<div> <div>Enable the searchable property.</div> <div>Find by setting in quick find.</div> <div>Filter by setting in quick find.</div> <div>Enable the searchable property.</div> <div>Enable the global filter on the postal code.</div> </div>

- A. Mastered
- B. Not Mastered

Answer: A

**Explanation:**

Requirement	Configuration
Display customers by type.	<div> <div>Enable sync with global choice.</div> <div>Enable the global filter.</div> <div>Enable the searchable property.</div> <div>Enable sync with global choice.</div> <div>Enable the sortable property.</div> </div>
Search by postal code.	<div> <div>Enable the searchable property.</div> <div>Find by setting in quick find.</div> <div>Filter by setting in quick find.</div> <div>Enable the searchable property.</div> <div>Enable the global filter on the postal code.</div> </div>

#### NEW QUESTION 130

- (Topic 4)

You are an app maker.

You want to create apps and track customizations as part of the default solution. You need to determine the impact of performing the work in the default solution. What should you conclude?

- A. The default solution does not contain all components and customizations from all solutions in the environment.
- B. The prefix used when creating components as part of the default solution can be set to a specific value.
- C. The default solution cannot be exported and distributed to another environment.

**Answer:** C

#### Explanation:

Default Solution. This is a special solution that contains all components in the system. The default solution is useful for discovering all the components and configurations in your system.

Why you shouldn't use the default solutions to manage customizations

There are a few reasons why you shouldn't create apps and make customizations in either of the default solutions:

? The default solution can't be exported; therefore, you can't distribute the default solution to another environment.

The default solution contains all components and customizations from all solutions in the environment.

By default, all enabled users can create apps and customize components in the Common Data Services Default Solution.

It's difficult to locate or identify the customizations you've made in the environment by using either default solution.

When you use either default solution to create components, you'll also use the default publisher assigned to the solution. This often results in the wrong publisher prefix being applied to some components.

Reference:

<https://docs.microsoft.com/en-us/power-platform/alm/use-solutions-for-your-customizations>

#### NEW QUESTION 134

- (Topic 4)

You are creating a model-driven app that allows users to create and edit a list of existing accounts.

You need to display a list of all active accounts. Which user interface components should you use?

- A. view
- B. gallery
- C. data table
- D. form

**Answer:** A

#### Explanation:

Imagine that you have a collection of data (such as a list sales orders, a set of service tickets, or a directory of contacts), and that you want to show this data in your Microsoft PowerApps app in a tabular format, where each column represents a field and each row represents a record. In the past, you might have been able to roughly simulate this visualization, although the process required some effort. However, we've been listening to your requests and are happy to announce that you can now quickly and easily achieve this very typical visualization by using the new Data table control that has been recently added to PowerApps.

Reference:

<https://powerapps.microsoft.com/fr-fr/blog/introducing-the-data-table-control/>

#### NEW QUESTION 136

- (Topic 4)

You create a Power Platform solution. Solution data is stored in a variety of documented cloud services.

You need to configure the data sources. What should you do?

- A. Create a data gateway.
- B. Use a content pack.
- C. Create a custom data connector.
- D. Add metadata to standard entities.

**Answer:** B

#### Explanation:

Common Data Model is built upon a rich and extensible metadata definition system that enables you to describe and share your own semantically enhanced data types and structured tags, capturing valuable business insight which can be integrated and enriched with heterogeneous data to deliver actionable intelligence.

Common Data Model can be used by various applications and services including Microsoft Dataverse, Dynamics 365, Microsoft Power Platform, and Azure ensuring that all of your services can access the same data.

Note: A wide variety of applications and services can easily access data in a data lake, however, each consumer must understand the format and meaning of the data before it can provide value. The Common Data Model simplifies this process by providing a metadata system that describes the data and standard entities to which producers can map.

Reference:

<https://docs.microsoft.com/en-us/common-data-model/use>

#### NEW QUESTION 138

- (Topic 4)

Note: This question is part of a series of questions that present the same scenario. Each question in the series contains a unique solution that might meet the stated goals. Some question sets might have more than one correct solution, while others might not have a correct solution.

After you answer a question in this section, you will NOT be able to return to it. As a result, these questions will not appear in the review screen.

A company is deploying Microsoft Power Platform components to streamline a job candidate screening process.

The human resources (HR) representatives of the company plan to attend school career fairs. The HR representatives must qualify and enter potential job candidates into a Power Apps app. The HR representatives must enter the following information for each candidate:

Field name	Data type	Criteria for follow up
Name	Text	No
Degree	Text	Yes
First available hire date	Date	Yes
Initial impression	Integer 0-10	Yes
Resume	Picture	No
Not currently viable	Boolean	Yes
Follow up	Boolean	NA

If a candidate is currently unqualified for a job position but would eventually qualify based on follow-up criteria, the follow-up checkbox must be selected or cleared in the system immediately.

The company plans to create a similar Power Apps app that will contain the same business use case, but for internal employees and promotions.

You need to create a Power Apps app solution to automatically mark the candidate for follow up.

Proposed solution: Create a Power Automate flow with conditions that use entered data as default data.

Does the solution meet the goal?

A. Yes

B. No

**Answer: B**

**Explanation:**

Instead use Common Data Service workflow with a PowerQuery on the data entity.

Note: Process (Workflow) table/entity reference is a set of logical rules that define the steps necessary to automate a specific business process, task, or set of actions to be performed. Common Data Service workflow support: Filter triggers based on which attributes change - You can control which field changes trigger your automated flows. For example, trigger your flow only when the status field changes while ignoring all other fields that may change.

Reference:

<https://docs.microsoft.com/en-us/business-applications-release-notes/april19/microsoft-flow/automated-parity-classic-common-data-service-workflows>

**NEW QUESTION 139**

- (Topic 4)

Note: This question is part of a series of questions that present the same scenario. Each question in the series contains a unique solution that might meet the stated goals. Some question sets might have more than one correct solution, while others might not have a correct solution.

After you answer a question in this section, you will NOT be able to return to it. As a result, these questions will not appear in the review screen.

You build a canvas app for a manufacturing company. The company receives parts and materials from many vendors. You create a form to collect information from packing slips.

Receivers must be able to take a picture of packing slips to receive materials instead of manually entering data in the app.

You need to ensure that users can scan packing slip information into the form. Proposed solution: Use a Key Phrase Extraction model.

Does the solution meet the goal?

A. Yes

B. No

**Answer: B**

**Explanation:**

The key phrase extraction prebuilt model identifies the main points in a text document.

Reference:

<https://docs.microsoft.com/en-us/ai-builder/prebuilt-key-phrase>

**NEW QUESTION 140**

- (Topic 4)

Engineers in an organization plan to attend an international product show.

The engineers must be able to capture information about presented products based on personal assessment and interest. The engineers must capture the information by taking pictures of the booth, brochures, and other product-specific materials.

You need to provide a button flow to streamline the process.

Which two AI Builder models should you use? Each correct answer presents part of the solution.

NOTE: Each correct selection is worth one point.

A. Language detection

B. Sentiment analysis

C. Category classification

D. Business card reader

E. Form processing

**Answer: AD**

**Explanation:**

International product show: The language detection prebuilt model identifies the predominant language of a text document. The model analyzes the text and returns the detected language and a numeric score from 0 through 1. Scores close to 1 indicate higher confidence in the result. The detected language is returned as the "script" of the language. For instance, for the phrase "I have a dog", it will return "en" instead of "en-US". The response for languages that can't be detected is unknown.

Use the AI Builder business card reader component to detect business cards and extract their information. You can take photos directly in the component or load images that you've taken. Data is extracted and identified by using the properties listed below.

Reference:

<https://docs.microsoft.com/en-us/ai-builder/prebuilt-language-detection> <https://docs.microsoft.com/en-us/ai-builder/business-card-reader-component-in-powerapps>

NEW QUESTION 141

DRAG DROP - (Topic 4)

A company uses Power Automate.

The company requires three cloud flows for the following:

- Send email notifications to a team member after an expense request is approved.
- If a document is uploaded to OneDrive, forward the document as an email attachment.
- Send an email at 4:00 PM on Fridays to remind team members to submit timesheets. You need to create the cloud flows.

Which cloud flow types should you create? To answer, drag the appropriate cloud flows to the correct activities. Each cloud flow may be used once, more than once, or not at all. You

NOTE: Each correct selection is worth one point.

Cloud flows

Automated

Scheduled

Instant

Answer Area

Activity

Send notifications after expense request approvals.

Forward new OneDrive documents as attachments.

Send timesheet reminder emails at 4:00 PM on Fridays.

Cloud flow

- A. Mastered
- B. Not Mastered

Answer: A

Explanation:

Cloud flows

Automated

Scheduled

Instant

Answer Area

Activity

Send notifications after expense request approvals.

Forward new OneDrive documents as attachments.

Send timesheet reminder emails at 4:00 PM on Fridays.

Cloud flow

Instant

Automated

Scheduled

NEW QUESTION 144

- (Topic 4)

A company uses Microsoft Teams. A coworker creates a chatbot. The coworker observes unexpected behavior with the chatbot. You need to troubleshoot the chatbot.

Which two actions should you recommend to the coworker? Each correct answer presents part of the solution.

NOTE: Each correct selection is worth one point.

- A. Ask the coworker to assign you to the owner role for the team.
- B. In Advanced tools, select Monitor.
- C. Ask the coworker to add you to their team.
- D. Select the chatbot and then select the Share button.

Answer: AB

NEW QUESTION 145

- (Topic 4)

DRAG DROP

A company uses Power Apps and Microsoft Dataverse.

The company has three solutions that you must move to a target environment:

- One solution is created for security roles. You must be able to add roles to the solution in the target environment
- One solution is created for table additions and modifications. Table structures must be updated in the solution in the target environment.
- One solution is for customizations. The custom actions must not be modified in the solution in the target environment

You need to create the solutions.

Which type of solutions should you create? To answer, drag the appropriate solutions to the correct requirements- Each solution may be used once, more than once, or not at all You may need to drag the split bar between panes or scroll to view content.

Solutions

Unmanaged

Managed

Answer Area

Requirement

Security roles

Tables

Customizations

Solution

- A. Mastered
- B. Not Mastered

Answer: A

Explanation:

Solutions

Unmanaged

Managed

Answer Area

Requirement

Security roles

Tables

Customizations

Solution

Unmanaged

Unmanaged

Managed

NEW QUESTION 146

DRAG DROP - (Topic 4)

A company uses Power Apps. You design the interface for a new model-driven app.

Users must interact with data from records related to the primary record form in the following ways:

- Use related business process flows.
- Display primary and related form columns.

You need to configure the forms without using additional customizations.

Which form types should you use? To answer, drag the appropriate form types to the correct requirements. Each form type may be used once, more than once, or not at all. You may need to drag the split bar between panes or scroll to view content.

NOTE: Each correct answer is worth one point.

Form types

Quick view form

Main form dialog

Quick create form

Main form component control

Answer Area

Requirement

Use related business process flows.

Display related columns along with other primary form columns.

Form type

- A. Mastered  
B. Not Mastered

Answer: A

Explanation:

Form types

Quick view form

Main form dialog

Quick create form

Main form component control

Answer Area

Requirement

Use related business process flows.

Display related columns along with other primary form columns.

Form type

Main form component control

Quick view form

NEW QUESTION 151

DRAG DROP - (Topic 4)

An insurance broker uses a Microsoft Dataverse environment with custom tables. You create a Power Apps app to manage vehicle insurance policies.

The app has a drop-down field that allows users to categorize a policy holder's driving record. This category field is not mandatory.

You need to ensure that insurance agents enter the correct categories when creating a new vehicle policy.

Which three actions should you perform in sequence? To answer, move the appropriate actions from the list of actions to the answer area and arrange them in the correct order.

Actions

In the vehicle policy table, click on Add subcomponents and navigate to Business rules.

Add a Recommendation card, select the driver record drop-down field and enter the recommendation details.

In the vehicle policy table, navigate to Business rules.

Add a business rule and enter a meaningful business rule name.

Click on the Condition card, select the Vehicle Policy and check for new driver.

Answer area

- A. Mastered  
B. Not Mastered

Answer: A

Explanation:

Actions

In the vehicle policy table, click on Add subcomponents and navigate to Business rules.

Add a Recommendation card, select the driver record drop-down field and enter the recommendation details.

Answer area

1 In the vehicle policy table, navigate to Business rules.

2 Add a business rule and enter a meaningful business rule name.

3 Click on the Condition card, select the Vehicle Policy and check for new driver.

**NEW QUESTION 156**

- (Topic 4)

You significantly modify a canvas app. You need to generate a new app version. What should you do?

- A. Publish the app.
- B. Update the major version number.
- C. Update the version notes.
- D. Update the minor version number.
- E. Save the app.

**Answer:** A

**NEW QUESTION 159**

DRAG DROP - (Topic 4)

You create a custom field on the Account entity.

Members of TeamA must have full access to the field. Members of TeamB must have no access to the field.

You need to configure security.

Which three actions should you perform in sequence? To answer, move the appropriate actions from the list of actions to the answer area and arrange them in the correct order.

Actions	Answer Area
Add TeamA to the field security profile.	
Create a field security profile and set all the permissions for the custom attribute to <b>Yes</b> .	
Add TeamB to the field security profile.	
Create a field security profile and set all the permissions for the custom attribute to <b>No</b> .	
Enable field-level security for the field.	

- A. Mastered
- B. Not Mastered

**Answer:** A

**Explanation:**

Step 1: Enable field security for the field

Step 2: Create a field security profile and set all the permissions for the custom attribute to Yes.

Step 3: Add TeamA to the field security profile.

Note: Field-level security is available for the default fields on most out-of-box entities, custom fields, and custom fields on custom entities. Field-level security is managed by the security profiles. To implement field-level security, a system administrator performs the following tasks.

? Enable field security on one or more fields for a given entity.

? Associate one more existing security profiles, or create one or more new security profiles to grant the appropriate access to specific users or teams.

**NEW QUESTION 160**

HOTSPOT - (Topic 4)

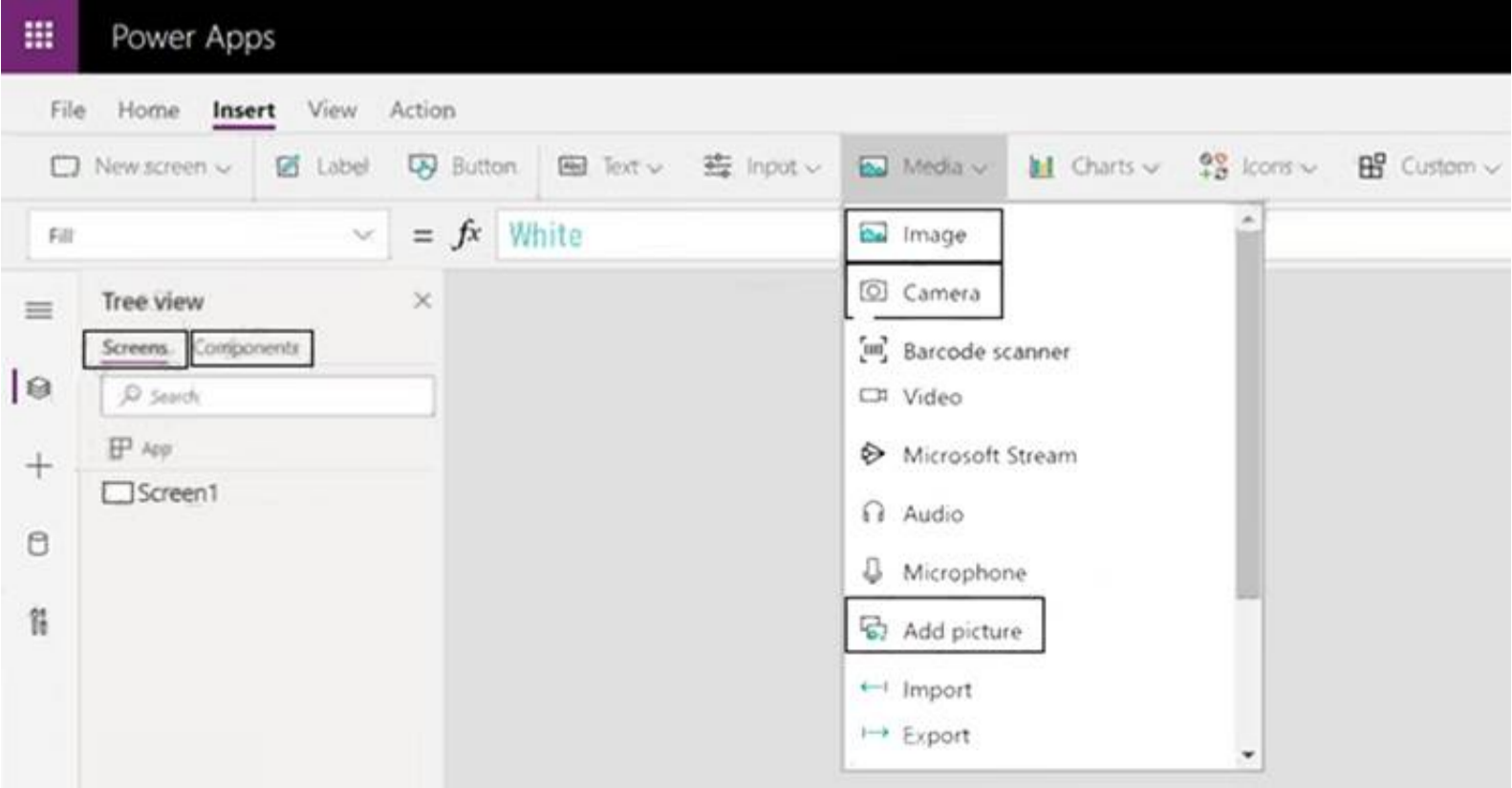
You are developing an app for a package delivery company. Delivery team members will use the app on their phones. Distribution center team members will use a web-based version of the app that runs on tablet devices.

When a delivery person arrives at a location and the package recipient is present, the app must capture the recipient's signature. If the recipient is not available, the app must capture a picture of the drop-off location or the person receiving the package.

You need to design phone-based and web-based versions of the app.

Which app type and media control should you use? To answer, configure the appropriate options in the answer area.

NOTE: Each correct selection is worth one point.



- A. Mastered
- B. Not Mastered

**Answer:** A

**Explanation:**

App Type: Screens

To insert the Camera control in your PowerApps program you can use the blank screen, and select Insert->Media->Camera.

Media Type: Camera

Use the Camera control to capture pictures with a device's camera. The device must have a camera and the user must authorize the app to use the camera.

Tap or select the camera control to capture a picture from the camera.

The most recently captured picture is available through the Photo property. With this property, the images can be:

- ? Viewed with the Image control. Use the Image control to view the captured image.
- ? Temporarily put in a variable or a collection.
- ? Stored in a database.
- ? Transmitted as a base64 encoded text string.

**NEW QUESTION 161**

- (Topic 4)

You are creating an employee directory canvas app. The app must display name, address, and a photo of each employee. You need to select a control type that will display the

- A. Address input
- B. List box
- C. Gallery
- D. Data table

**Answer:** C

**NEW QUESTION 164**

- (Topic 4)

A company uses Microsoft platforms for all accessibility, compliance, and security auditing.

The auditing and compliance division of the company flags a newly created Power Apps canvas app due to accessibility issues. The app must be unpublished until it conforms to Microsoft accessibility requirements and recommendations.

You need to identify all accessibility issues for a solution. What should you use?

- A. Microsoft Accessibility Conformance Reports
- B. Microsoft Compliance Center
- C. Power Apps Studio
- D. Microsoft Accessibility Guides
- E. Microsoft Visual Studio

**Answer:** C

**Explanation:**

? Find accessibility issues

? In the upper-right corner of Power Apps Studio, select the icon for the App checker.

? App checker icon.

? In the menu that appears, select Accessibility.

? A list of issues appears, sorted first by severity and then by screen.

? Select the arrow next to an item to show details about it.

? Accessibility checker details.

? Select the back arrow to return to the list of items.

? If you decide to address an issue, select it to open the affected property.

? After you change one or more properties, select Re-check to update the list of issues.

Reference:

<https://docs.microsoft.com/en-us/powerapps/maker/canvas-apps/accessibility-checker> <https://support.microsoft.com/en-us/accessibility/enterprise-answer-desk>

**NEW QUESTION 165**

- (Topic 4)

You are creating a multi-page canvas app that loads tabular data from an external data source.

Once loaded, the data must be available to all screens within the canvas app.

You need to reduce the number of times that the app must retrieve data from the data source.

Which two data stores can you use? Each correct answer presents a complete solution.

NOTE: Each correct selection is worth one point.

- A. parameter
- B. collection
- C. environment variable

**Answer:** CD

**Explanation:**

Reference:

<https://docs.microsoft.com/en-us/powerapps/maker/canvas-apps/working-with-data-sources>

**NEW QUESTION 166**

DRAG DROP - (Topic 4)

You are designing an app for a bank. You plan to use the following entities in the app:

Entity	Comments
Clients	Clients are assigned to a branch office
Bank accounts	A client may have multiple bank accounts. A bank account may have multiple clients as bank account owners
Branch offices	Clients are assigned to a branch office
Employees	Each employee works at only one branch office

You need to configure the relationships between the entities.  
Which relationship types should you use? To answer, drag the appropriate relationship types to the correct relationships. Each source may be used once, more than once, or not at all. You may need to drag the split bar between panes or scroll to view content.  
NOTE: Each correct selection is worth one point.

Relationship types

One-to-one

One-to-many

Many-to-one

Many-to-many

Answer Area

Relationship		
Source entity	Target entity	Relationship type
Clients	Bank accounts	<div>Relationship type</div>
Clients	Branch offices	<div>Relationship type</div>
Branch offices	Employees	<div>Relationship type</div>

- A. Mastered
- B. Not Mastered

Answer: A

**Explanation:**  
Box 1: Many-to-many  
Box 2: Many-to-one  
A client have a single branch office.  
A branch office can have many clients.  
Box 3: One-to-many  
A branch office can have many employees. An employee only works at one branch office.

NEW QUESTION 171

HOTSPOT - (Topic 4)  
You use Microsoft Power BI Desktop to create a report. Users note that column headings are confusing.  
You need to modify some columns and delete other columns.  
Which tool should you use? To answer, select the appropriate options in the answer area. NOTE: Each correct selection is worth one point.

Answer Area

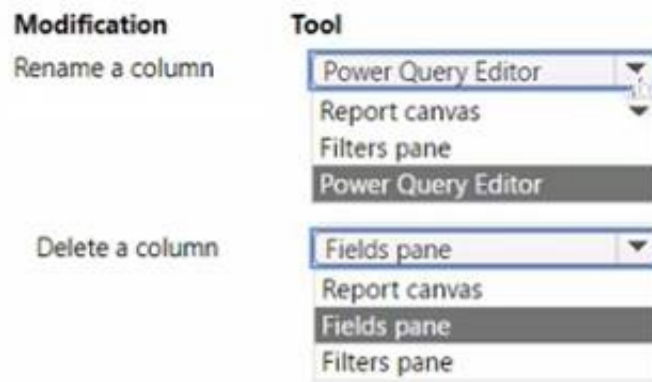
Modification	Tool
Rename a column	<div><div>Power Query Editor</div><div>Report canvas</div><div>Filters pane</div><div>Power Query Editor</div></div>
Delete a column	<div><div>Fields pane</div><div>Report canvas</div><div>Fields pane</div><div>Filters pane</div></div>

- A. Mastered
- B. Not Mastered

Answer: A

Explanation:

Answer Area



**NEW QUESTION 176**

- (Topic 4)

You create a custom table as part of a solution in the development environment. You deploy major version solutions as managed solutions to production. The organization does not allow new solutions to be created in the production environment.

When a minor update is made to a column length, users cannot enter entire values. You need to allow users to enter entire values in the column.

Solution: Uninstall the most recent version of the solution from the production environment. Does the solution meet the goal?

- A. Yes
- B. No

**Answer: B**

**NEW QUESTION 181**

- (Topic 4)

Note: This question is part of a series of questions that present the same scenario. Each question in the series contains a unique solution that might meet the stated goals. Some question sets might have more than one correct solution, while others might not have a correct solution.

After you answer a question in this section, you will NOT be able to return to it. As a result, these questions will not appear in the review screen.

You are creating a canvas app.

You need to automatically detect bicycles in pictures taken with the camera. Proposed solution:

- ? Create a Category Classification custom model in AI Builder.
  - ? Train the model with pictures of bicycles and then publish the trained model.
  - ? Add the Object Detector control to your canvas app.
- Does the solution meet the goal?

- A. Yes
- B. No

**Answer: B**

**Explanation:**

Instead create an Object Detection custom model Reference:

<https://docs.microsoft.com/en-us/ai-builder/prediction-overview> <https://docs.microsoft.com/en-us/ai-builder/object-detector-component-in-powerapps>

**NEW QUESTION 184**

- (Topic 4)

Note: This question is part of a series of questions that present the same scenario. Each question in the series contains a unique solution that might meet the stated goals. Some question sets might have more than one correct solution, while others might not have a correct solution.

After you answer a question in this section, you will NOT be able to return to it. As a result, these questions will not appear in the review screen.

You are creating a canvas app that displays a list of accounts.

Users must be able to select an account and view details for the account. The app must include a feature that brings the user back to the list of accounts.

You add a blank screen named Screen\_Accounts and add a gallery named Gallery\_Accounts to the screen. You set the data source of Gallery\_Accounts to Accounts and add another blank screen named Screen\_AccountDetail.

You need to complete the app.

Solution:

- ? Add a display form to Screen\_AccountDetail.
  - ? Set the OnSelect property of Gallery\_Accounts to Navigate(Screen\_AccountDetail).
  - ? Set the data source of the form to Accounts.
  - ? Set the Item property of the form to Selected.
  - ? Add a back icon on Screen\_AccountDetail and set its OnSelect property to Navigate(Screen\_Accounts).
- Does the solution meet the goal?

- A. Yes
- B. No

**Answer: A**

**Explanation:**

If you add a Display form control, the user can display all fields of a record or only the fields that you specify.

Reference:

<https://docs.microsoft.com/en-us/powerapps/maker/canvas-apps/controls/control-form-detail>

NEW QUESTION 188

HOTSPOT - (Topic 4)

You need to store a list of products and their colors. You have a Power Apps app that includes the following elements:

- ? a text box for the product name
  - ? a drop-down list for the product color
  - ? a button to add a product to the list
  - ? a status message that shows whether the addition of a product to the list was successful
- The button uses the following formula:

```
Collect(
colProductList,
{
Product: txtProductName.Text, Color: drpColors.Selected.Value
}
);
Set(
vStatusMessage, "Added '" & txtProductName.Text & "'"
);
timStatusMessage.Start;
```

For each of the following statements, select Yes if the statement is true. Otherwise, select No.  
NOTE: Each correct selection is worth one point.

Statements	Yes	No
You must explicitly declare the collection before you can add product names and colors to the collection.	<input type="radio"/>	<input type="radio"/>
The formula stores the product name and the color in a collection.	<input type="radio"/>	<input type="radio"/>
vStatusMessage is a context variable that is used to store the status message.	<input type="radio"/>	<input type="radio"/>

- A. Mastered
- B. Not Mastered

Answer: A

Explanation:

Box 1: No  
The Collect function adds records to a data source. If the data source doesn't already exist, a collection is created.  
Box 2: Yes  
Box 3: No  
Use the Set function to set the value of a global variable, which temporarily holds a piece of information, such as the number of times the user has selected a button or the result of a data operation.

NEW QUESTION 191

DRAG DROP - (Topic 4)

You have a model-driven app that has an entity named Marinas. You have an entity named Boats that list the boats associated with each marina. You must add a list of boats to the Marinas form. You must also add an option for users to select different views including boat owners and marina members. You need to embed the list of boats associated with a Marina record in the entity form. In which order should you perform the actions? To answer, move all actions from the list of actions to the answer area and arrange them in the correct order.

Actions

Add a Subgrid component to a form

Select **Show related records** and then select the related entity and default view for the subgrid

Save and publish the form

Select the **Allow users to change view** option

Answer Area

>

<

^

v

- A. Mastered

B. Not Mastered

**Answer:** A

**Explanation:**

Step 1: Add a Subgrid component to a form

You add a subgrid component the same way as you add any other component.

Step 2: Select Show related records and then select the related entity and default view for the subgrid

Configure a subgrid component.

Properties available to configure when using a subgrid component on a form using the form designer include:

? Show related rows

When selected, the subgrid displays only rows related to the current row that is displayed on the form.

Step 3: Select the Allow users to change view option Configure a subgrid component.

Properties available to configure when using a subgrid component on a form using the form designer include:

? Allow users to change view

When selected, app users can change from the Default view to another view of the table

selected in the Table property. Step 4: Save and publish the form

**NEW QUESTION 195**

DRAG DROP - (Topic 4)

A company uses Power Automate and Power Apps to streamline business processes. You need to use AI Builder to analyze customer reviews of the company's products.

In which order should you perform the actions? To answer, move all actions from the list of actions to the answer area and arrange them in the correct order.

Action	Answer Area
Publish the model.	
Connect data to the model.	
Train the model.	
Use the model in a Power Automate flow.	

A. Mastered

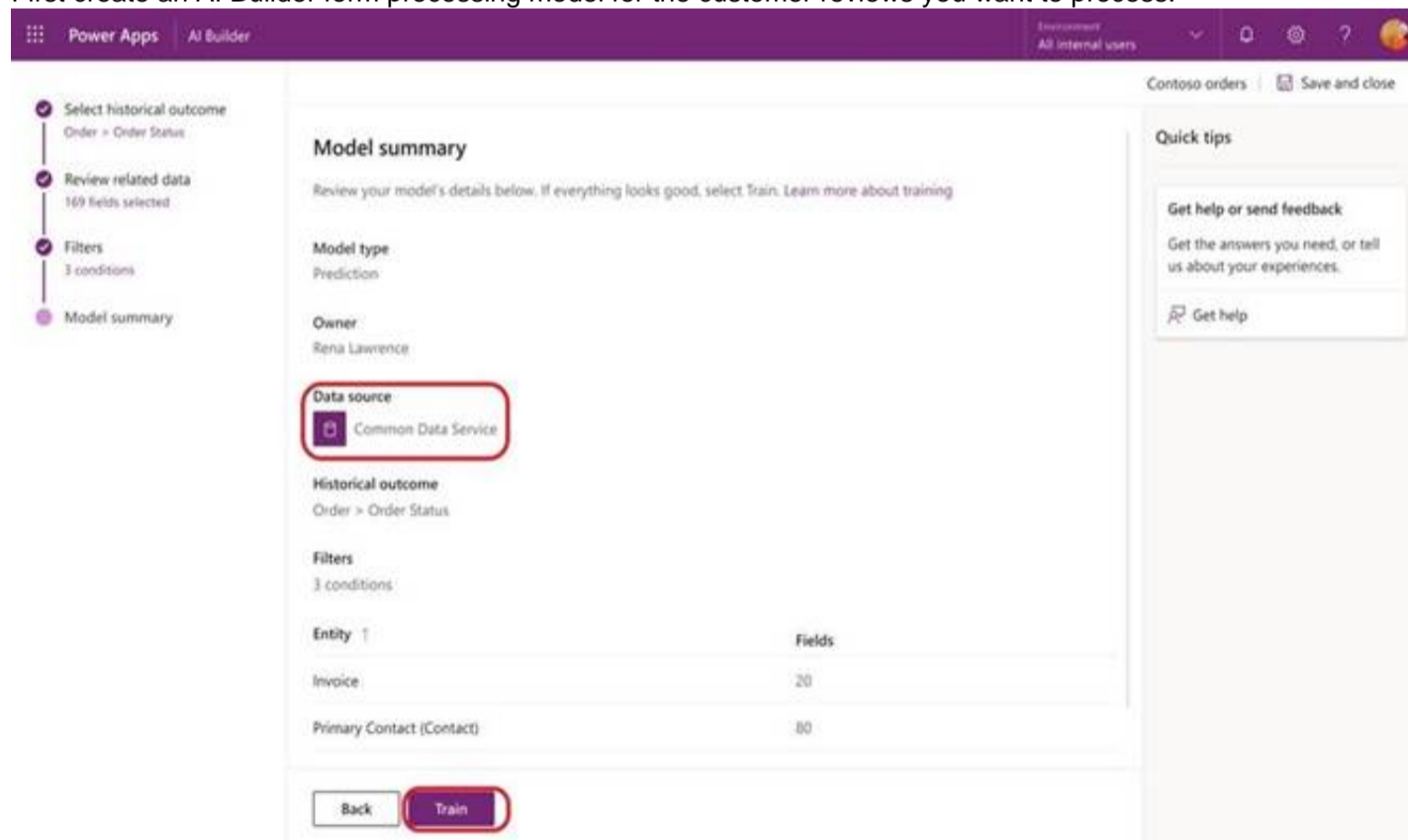
B. Not Mastered

**Answer:** A

**Explanation:**

Step 1: Connect data to the model.

First create an AI Builder form processing model for the customer reviews you want to process.



Step 2: Train the model. Step 3: Publish the model.

Step 4: Use the model in a Power Automate flow.

Once you train and publish the model, create a solution-aware flow in Power Automate.

**NEW QUESTION 199**

- (Topic 4)

A clothing retailer is creating a Power Virtual Agents chatbot in Microsoft Teams. The chatbot will use Microsoft Dataverse for Teams to provide sales metrics by store.

A user wants to be able to ask the chatbot to see all the sales for pants.

You need to configure the chatbot to provide sales data for pants even when a user enters the terms jeans, slacks, or trousers.

Which chatbot component should you use?

A. Skills

- B. Tables
- C. Topics
- D. Supported languages
- E. Entities

**Answer:** E

**Explanation:**

Reference:

<https://docs.microsoft.com/en-us/power-virtual-agents/advanced-entities-slot-filling>

**NEW QUESTION 203**

- (Topic 4)

Note: This question is part of a series of questions that present the same scenario. Each question in the series contains a unique solution that might meet the stated goals. Some question sets might have more than one correct solution, while others might not have a correct solution.

After you answer a question in this section, you will NOT be able to return to it. As a result, these questions will not appear in the review screen.

You are creating a canvas app.

You need to automatically detect bicycles in pictures taken with the camera. Proposed solution:

? Create a Prediction custom model in AI Builder.

? Train the model with pictures of bicycles and then publish the trained model.

? Add the Object Detector control to your canvas app.

Does the solution meet the goal?

- A. Yes
- B. No

**Answer:** B

**Explanation:**

Instead create an Object Detection custom model

Note: AI Builder prediction models analyze patterns in historical data that you provide. Prediction models learn to associate those patterns with outcomes. Then, we use the power of AI to detect learned patterns in new data, and use them to predict future outcomes.

Reference:

<https://docs.microsoft.com/en-us/ai-builder/prediction-overview>

**NEW QUESTION 205**

- (Topic 4)

You create a custom table as part of a solution in the development environment. You deploy major version solutions as managed solutions to production. The organization does not allow new solutions to be created in the production environment.

When a minor update is made to a column length, users cannot enter entire values. You need to allow users to enter entire values in the column.

Solution: Update the column length in the development environment. Export the solution as a managed solution, import the solution into production

Does the solution meet the goal?

- A. Yes
- B. No

**Answer:** B

**NEW QUESTION 210**

- (Topic 4)

You are creating a canvas app. You plan to use variables that are scoped to a screen to store values.

You need to create and update the value of the variables.

Which three functions can you use? Each correct answer presents a complete solution.

NOTE: Each correct selection is worth one point.

- A. Collect
- B. Patch
- C. Navigate
- D. Set
- E. UpdateContext

**Answer:** BCE

**Explanation:**

B: Use the Patch function to modify records in complex situations. Such as, when you do updates that require no user interaction or use forms that span multiple screens.

CE: Context variables are scoped for Screen. They are great for passing values to a screen, much like parameters to a procedure in other languages. Can be referenced from only one screen.

Functions available for context variables: UpdateContext

Navigate Note:

Use the UpdateContext function to create a context variable, which temporarily holds a piece of information, such as the number of times the user has selected a button or the result of a data operation.

Context variables are also preserved when a user navigates between screens. You can use Navigate to set one or more context variables for the screen that the formula will display, which is the only way to set a context variable from outside the screen. Reference:

<https://docs.microsoft.com/en-us/powerapps/maker/canvas-apps/functions/function-patch>

<https://docs.microsoft.com/en-us/powerapps/maker/canvas-apps/functions/function-navigate>

<https://docs.microsoft.com/en-us/powerapps/maker/canvas-apps/functions/function-updatecontext>

**NEW QUESTION 211**

- (Topic 4)  
A company uses Microsoft Power Apps.  
You need to create a canvas app to display a Microsoft Power BI report. The report must use the context of a selected record in the app. Data in a Power BI control must be filtered to display the context of the selected record.  
You need to propose the right solution.  
Solution: Append filter parameter to Power BI report URL. Does the solution meet the goal?

A. Yes  
B. No

**Answer:** A

**NEW QUESTION 215**

- (Topic 4)  
You are creating an app for an organization’s human resources (HR) department. You create an Employee entity in an unmanaged Common Data Service solution.  
Another user creates the following Power Automate flows separately from the solution:

Flow	Description
FlowA	Send email to the HR manager when a new document is uploaded to Microsoft SharePoint.
FlowB	Send email to the HR manager after a user selects a document in Microsoft OneDrive for Business and runs the flow.
FlowC	Send email to the HR manager at 8 AM daily if new documents are uploaded in Microsoft OneDrive for Business since the previous day.
FlowD	Send email to the HR manager when a new employee record is added.

You need to incorporate the flows that can be added to the solution.  
Which two flows can you include? Each correct selection presents a complete solution.  
NOTE: Each correct selection is worth one point.

- A. FlowA
- B. FlowB
- C. FlowC
- D. FlowD

**Answer:** AD

**Explanation:**  
You can add any of these conditions to determine precisely when your flow is triggered.  
Reference:  
<https://docs.microsoft.com/en-us/power-automate/connection-cds-native>

**NEW QUESTION 219**

.....

## Thank You for Trying Our Product

### We offer two products:

1st - We have Practice Tests Software with Actual Exam Questions

2nd - Questions and Answers in PDF Format

### PL-100 Practice Exam Features:

- \* PL-100 Questions and Answers Updated Frequently
- \* PL-100 Practice Questions Verified by Expert Senior Certified Staff
- \* PL-100 Most Realistic Questions that Guarantee you a Pass on Your First Try
- \* PL-100 Practice Test Questions in Multiple Choice Formats and Updates for 1 Year

**100% Actual & Verified — Instant Download, Please Click**  
**[Order The PL-100 Practice Test Here](#)**