

Cisco

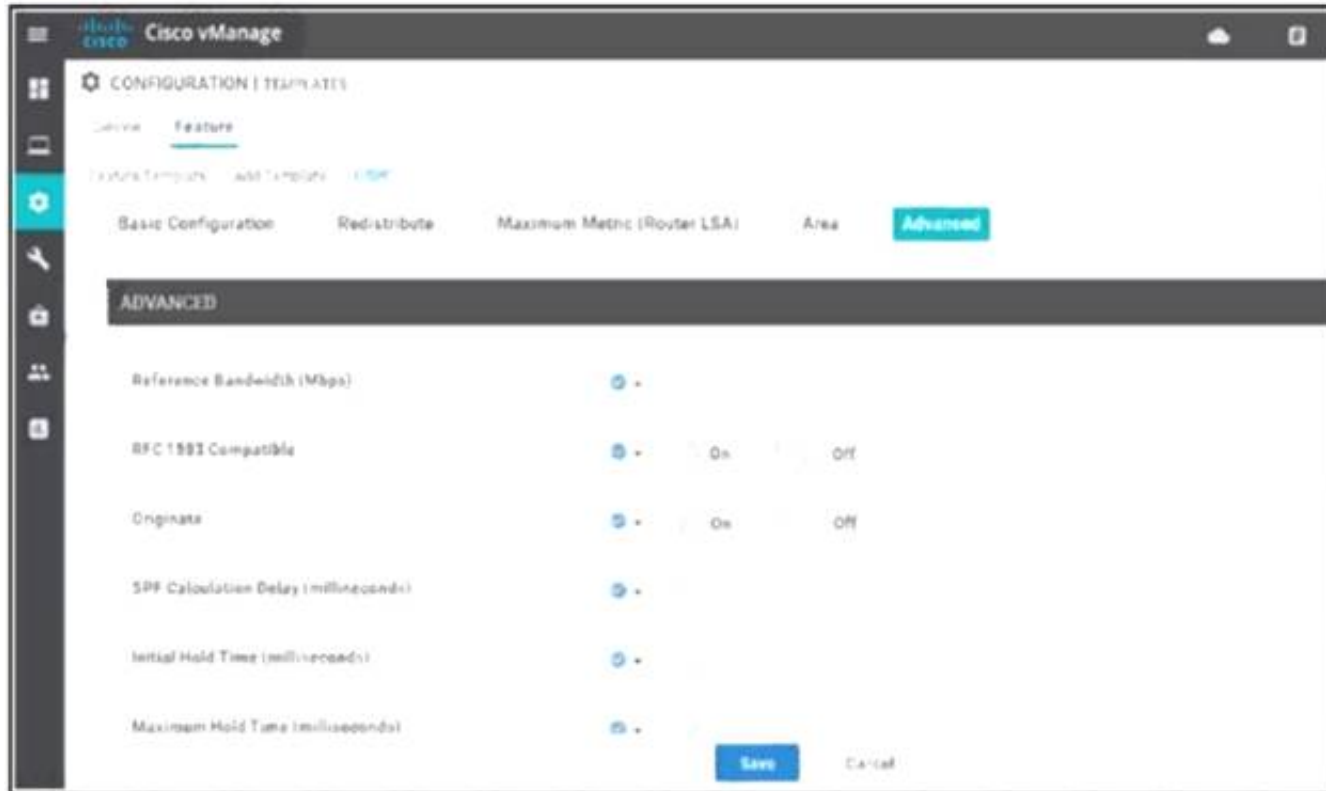
Exam Questions 300-415

Implementing Cisco SD-WAN Solutions (ENSDWI)



NEW QUESTION 1

Refer to the exhibit.



A network administrator is configuring OSPF advanced configuration parameters from a template using the vManager GUI for a branch WAN Edge router to calculate the cost of summary routes to an ASBR. Which action achieves this configuration?

- A. Disable RFC 1583 Compatible
- B. Enable Originate
- C. Enable RFC 1M3 Compatible
- D. Disable Original

Answer: C

NEW QUESTION 2

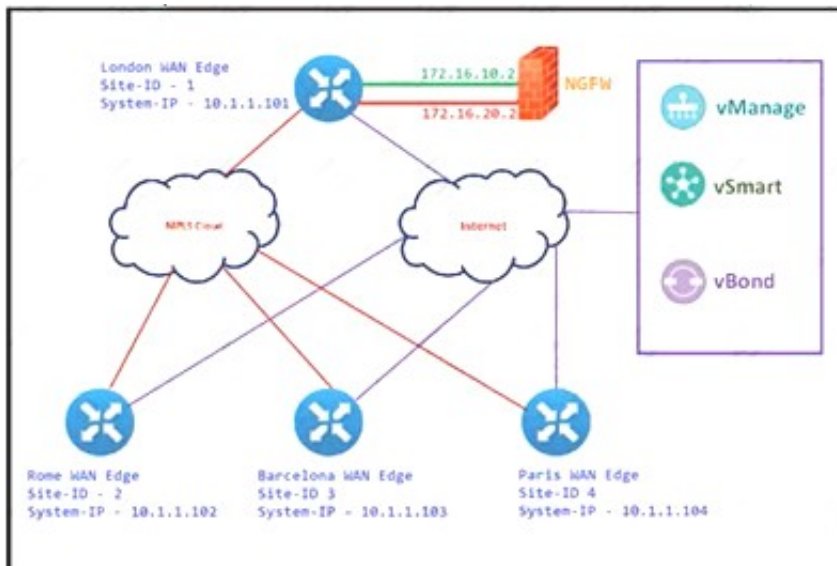
Which two image formats are supported for controller codes? (Choose two.)

- A. .nxos
- B. .qcow2
- C. .ova
- D. .bin
- E. Tgz

Answer: BC

NEW QUESTION 3

Refer to the exhibit.



The Cisco SD-VYAN is deployed using the default topology. The engineer wants to configure a service insertion policy such that all data traffic between Rome to Paris is forwarded through the NGFW located in London. Which configuration fulfills this requirement, assuming that the Service VPN ID is 1?

A)

☐ London WAN Edge
vpn 1
service netsvc1 address 172.16.10.2
service netsvc2 address 172.16.20.2

vSmart Policy
policy
lists
site-list ROME
site-id 2
site-list PARIS
site-id 4
control-policy NGFW-SI
sequence 1
match route
site-id ROME
action accept
set service netsvc1 vpn 1
sequence 2
match route
site-id PARIS
action accept
set service netsvc2 vpn 1
default-action accept
!
apply-policy
site-list ROME
control-policy NGFW-SI out
!
site-list PARIS
control-policy NGFW-SI out

B)

☐ London WAN Edge
vpn 1
service netsvc1 address 172.16.10.2
service netsvc2 address 172.16.20.2

vSmart Policy
policy
lists
site-list ROME
site-id 2
site-list PARIS
site-id 4
control-policy NGFW-SI
sequence 1
match route
site-id ROME
action accept
sequence 2
match route
site-id PARIS
action accept
default-action accept
!
apply-policy
site-list ROME control-policy NGFW-SI out

C)

☐ ROME WAN Edge
service FW address 10.1.1.101

PARIS WAN Edge
service FW address 10.1.1.101

vSmart Policy
policy
lists
site-list ROME
site-id 2
site-list PARIS
site-id 4
control-policy NGFW-SI
sequence 1
match route
site-id ROME
action accept
set service netsvc1 vpn 1
sequence 2
match route
site-id PARIS
action accept
set service netsvc2 vpn 1
default-action accept
!
apply-policy
site-list ROME
control-policy NGFW-SI out
!
site-list PARIS
control-policy NGFW-SI out

D)

```

○ ROME WAN Edge
service FW address 10.1.1.101

PARIS WAN Edge
service FW address 10.1.1.101

vSmart Policy
policy
lists
  site-list ROME
  site-id 2
  site-list PARIS
  site-id 4
control-policy NGFW-SI
sequence 1
  match route
  site-id ROME
  action accept
sequence 2
  match route
  site-id PARIS
  action accept
default-action accept
!
apply-policy
site-list ROME control-policy NGFW-SI out
  
```

- A. Option A
- B. Option B
- C. Option C
- D. Option D

Answer: A

NEW QUESTION 4

Refer to the exhibit.

```

vpn 0
interface ge0/0
ip address 10.1.15.15/24
tunnel-interface
color lte
allow-service dhcp
allow-service dns
allow-service icmp

no allow-service sshd
no allow-service ntp
no allow-service stun
!
no shutdown
shaping-rate
  
```

Which shaping-rate does the engineer use to shape traffic at 9 Mbps?

- A. 9
- B. 9000
- C. 90000
- D. 9000000

Answer: B

Explanation:

<https://www.cisco.com/c/en/us/td/docs/routers/sdwan/command/sdwan-cr-book/config-cmd.html#wp421715213>

NEW QUESTION 5

Which two platforms for the Cisco SD-WAN architecture are deployable in a hypervisor on-premises or in IAAS Cloud? (Choose two.)

- A. CSR 1000v
- B. vEdge 100c
- C. vEdge Cloud
- D. vEdge 2000
- E. ISR 4431

Answer: AC

NEW QUESTION 6

What is the role of the Session Traversal Utilities for NAT server provided by the vBond orchestrator?

- A. It facilitates SD-WAN toners and controllers to discover their own mapped or translated IP addresses and port numbers
- B. It prevents SD-WAN Edge routers from forming sessions with public transports among different service providers
- C. It facilitates SD-WAN Edge routers to stay behind a NAT-enabled firewall while the transport addresses of the SD-WAN controller are unNAT-ed
- D. It allows WAN Edge routers to form sessions among MPLS TLOCs using only public IP addresses

Answer: C

NEW QUESTION 7

Refer to the exhibit, which configuration configures IPsec tunnels in active and standby?

```
from-vsmart data-policy_1_ServiceIsertionIPSec
direction from-service
vpn-list 1
  sequence 1
  match destination-ip 64.102.6.247/32
  action accept
  set
  service netvc1
  service local
  default-action accept
```

- ☒ vpn 1
service netvc1 interface ipsec1 ipsec2

vpn-list 1
count ServicePsec1_275676046
from-vsmart lists vpn-list 1
vpn 1
- ☐ vpn 0
service netvc1 interface ipsec1 ipsec2

from-vsmart lists vpn-list 0
vpn 0
- ☐ vpn 1
service netvc1 interface ipsec1 ipsec2

from-vsmart lists vpn-list 1
vpn 1
- ☐ vpn 0
service netvc1 interface ipsec1 ipsec2

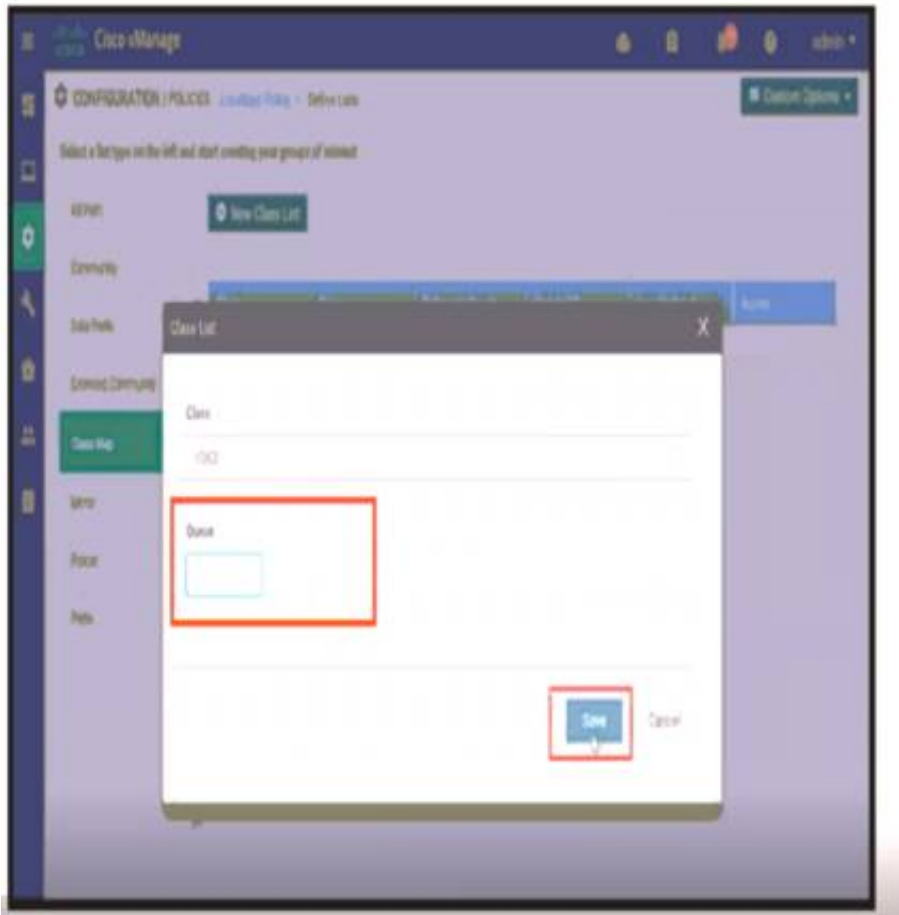
vpn-list 1
count ServicePsec1_275676046
from-vsmart lists vpn-list 0
vpn 0

- A. Option A
- B. Option B
- C. Option C
- D. Option D

Answer: C

NEW QUESTION 8

Refer to the exhibit.



A network administrator is setting the queueing value for voice traffic for one of the WAN Edge routers using vManager GUI. Which queue value must be set to accomplish this task?

- A. 1
- B. 2
- C. 3

Answer: A

NEW QUESTION 9

How many subnets are necessary in Azure VNet for a WAN Edge device to function in the cloud deployment?

- A. CSR is the WAN Edge device that is supported in the Microsoft clou
- B. The Microsoft underlay cloud fabric performs the management function.
- C. There must be three subnets in VNet: management, public, and services.
- D. One public subnet is required in VNe
- E. The Microsoft underlay cloud fabric performs all of the routing functions for WAN Edge.
- F. Public and services subnets are required in VNe
- G. The Microsoft underlay cloud fabric performs the management function.

Answer: D

NEW QUESTION 10

An engineering team must prepare a traffic engineering policy where an MPLS circuit is preferred for traffic coming from the Admin VLAN Internet should be used as a backup only. Which configuration fulfill this requirement?

A)

```
policy
data-policy _TE
vpn-list VPN_10
sequence 1
match
source-data-prefix-list Source_Prefix
destination-data-prefix-list Dest_Prefix
action accept
set
vpn 10
tloc-list Hub_TLOCs
default-action reject
!
tloc-list Hub_TLOCs
tloc 10.4.4.4 color mpls encap ipsec preference 300
tloc 10.4.4.4 color public-internet encap ipsec preference 600
```

B)

```
policy
data-policy _TE
vpn-list VPN_10
sequence 1
match
source-data-prefix-list Source_Prefix
destination-data-prefix-list Dest_Prefix
action accept
nat use-vpn 0
nat fallback
default-action reject
!
tloc-list Hub_TLOCs
tloc 10.4.4.4 color mpls encap ipsec preference 300
tloc 10.4.4.4 color public-internet encap ipsec preference 600
```

C)

```
policy
data-policy _TE
vpn-list VPN_10
sequence 1
match
source-data-prefix-list Source_Prefix
destination-data-prefix-list Dest_Prefix
action accept
set
vpn 10
tloc-list Hub_TLOCs
default-action accept
!
tloc-list Hub_TLOCs
tloc 10.4.4.4 color mpls encap ipsec preference 600
tloc 10.4.4.4 color public-internet encap ipsec preference 300
```

D)

```
policy
data-policy _TE
vpn-list VPN_10
sequence 1
match
source-data-prefix-list Source_Prefix
destination-data-prefix-list Dest_Prefix
action accept
set
vpn 512
tloc-list Hub_TLOCs
default-action accept
!
tloc-list Hub_TLOCs
tloc 10.4.4.4 color mpls encap ipsec preference 600
tloc 10.4.4.4 color public-internet encap ipsec preference 300
```

- A. Option A
- B. Option B
- C. Option C
- D. Option D

Answer: C

NEW QUESTION 10

On which device is a service FW address configured to Insert firewall service at the hub?

- A. vEdge at the branch
- B. vSmart at the hub
- C. vEdge at the hub
- D. vSmart at the branch

Answer: C

NEW QUESTION 11

What is the default value (in milliseconds) set for the poll interval in the BFD basic configuration?

- A. 300,000
- B. 600,000
- C. 900,000
- D. 1,200,000

Answer: B

Explanation:

https://sdwan-docs.cisco.com/Product_Documentation/vManage_Help/Release_18.2/Configuration/Templates/B

NEW QUESTION 16

Which set of platforms must be in separate VMS as of release 16.1?

- A. vSmart and WAN Edge
- B. WAN Edge and vBond
- C. vManage and vSmart
- D. vBond and vSmart

Answer: D

NEW QUESTION 21

Which API call retrieves a list of all devices in the network?

- A. https://vmanage_IP_address/dataservice/system/device/{{model}}
- B. http://vmanage_IP_address/dataservice/system/device/{{model}}
- C. http://vmanage_IP_address/api-call/system/device/{{model}}
- D. https://vmanage_IP_address/api-call/system/device/{{model}}

Answer: A

Explanation:

Display all available vEdge routers in the overlay network.

```
GET https://{vmanage-ip-address}/dataservice/system/device/vedges
```

NEW QUESTION 26

An engineer is configuring a data policy for IPv4 prefixes for a single WAN Edge device on a site with multiple WAN Edge devices. How is this policy added using the policy configuration wizard?

- A. In vManage NMS, select the configure policies screen, select the localized policy tab and click add policy
- B. In vSmart controller, select the configure policies screen, select the localized policy tab and click add policy
- C. and click add policy
- D. In vManage NM
- E. select the configure policies screen select the centralized policy tab and click add policy
- F. In vBond orchestrator
- G. select the configure policies screen, select the localized policy tab and click add policy
- H. and click add policy

Answer: A

NEW QUESTION 29

Which two different states of a WAN Edge certificate are shown on vManage? (Choose two.)

- A. inactive
- B. active
- C. staging
- D. invalid
- E. provisioned

Answer: BE

NEW QUESTION 33

What are the default username and password for vSmart Controller when it is installed on a VMware ESXi hypervisor'?

- A. username Cisco password admin
- B. username admin password Cisco
- C. username Cisco password Cisco
- D. username admin password admin

Answer: D

NEW QUESTION 34

Refer to the exhibit

PEER TYPE	PEER PROTOCOL	PEER SYSTEM	SITE IP	DOMAIN ID	PEER ID	PRIVATE IP	PRIVATE PORT	PEER PUBLIC IP	PUBLIC PORT	LOCAL COLOR	STATE	LOCAL ERROR	REMOTE ERROR	REPEAT COUNT
vbond	dtls	-	0	0	209.165.200.230	12346	209.165.200.230	12346	biz-internet	tear_down	CTORGNMMIS	NOERR	14	
vbond	dtls	-	0	0	209.165.201.137	12346	209.165.201.137	12346	biz-internet	tear_down	CTORGNMMIS	NOERR	13	

An engineer is getting a CTORGNMMIS error on a controller connection Which action resolves this issue?

- A. Configure a valid serial number on the WAN Edge
- B. Configure a valid organization name
- C. Configure a valid certificate on vSMART
- D. Configure a valid product ID

Answer: B

NEW QUESTION 36

Refer to the exhibit.

```
LAB-ROUTER#show ip route vrf 100
Gateway of last resort is 10.1.9.2 to network 0.0.0.0

m* 0.0.0.0/0 [251/0] via 10.1.9.2, 06:10:53
    [251/0] via 10.1.9.3, 06:10:53
O   10.80.6.0/24
    [110/300] via 172.19.75.78, 20:35:33, GigabitEthernet0/0/2.10
    [110/300] via 172.19.75.66, 1w0d, GigabitEthernet0/0/1.11
O   10.80.56.0/24
    [110/300] via 172.19.75.78, 20:35:33, GigabitEthernet0/0/2.10
    [110/300] via 172.19.75.66, 1w0d, GigabitEthernet0/0/1.11
```

The network administrator has configured a centralized topology policy that results in the displayed routing table at a branch office. Which two configurations are verified by the output? [Choose two.]

- A. The routing table is for the transport VPN.
- B. The default route is learned via OMP.
- C. This routing table is from a cEdge router.
- D. The default route is configured locally.
- E. The configured policy is adding a route tag of 300 to learned routes.

Answer: BC

NEW QUESTION 41

What is the minimum Red Hat Enterprise Linux operating system requirement for a Cisco SD-WAN controller deployment via KVM?

- A. RHEL7.5
- B. RHEL 6.5
- C. RHEL4.4
- D. RHEL 6.7

Answer: D

NEW QUESTION 42

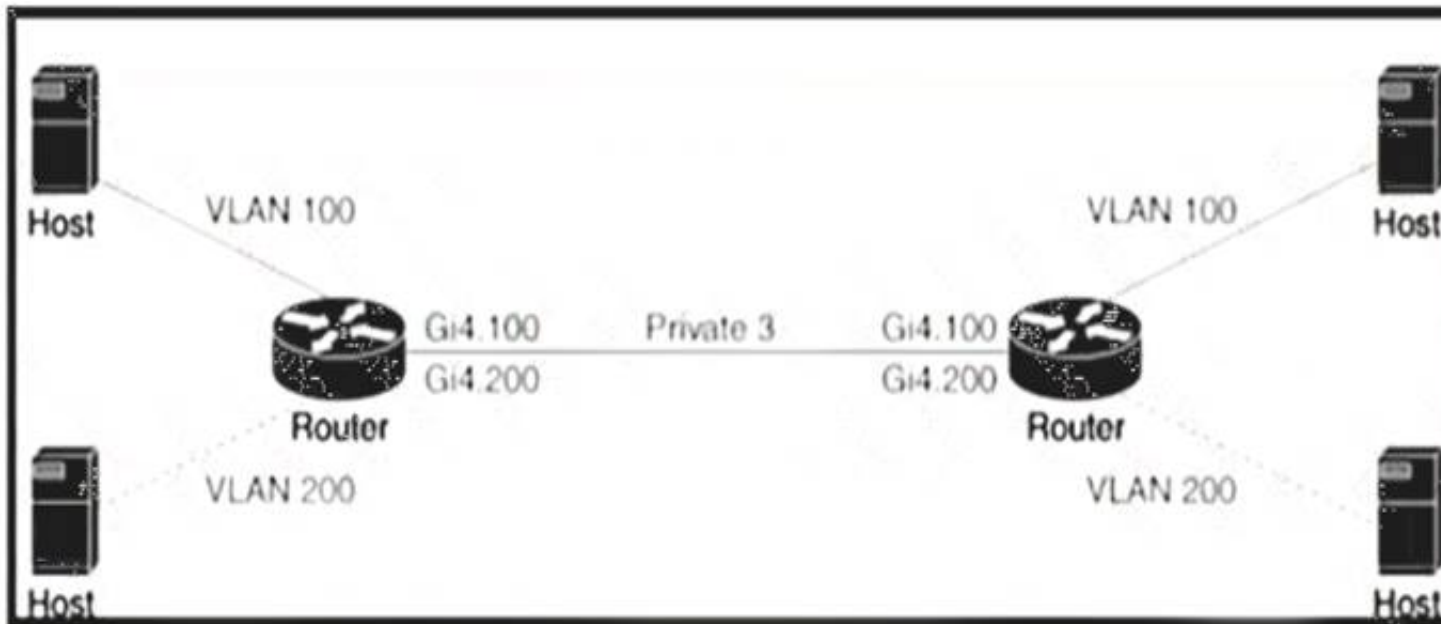
A network administrator configures SNMFV3 on a Cisco WAN Edge router from CL I for monitoring purposes How many characters are supported by the snmp user username command?

- A. from 1 to 8
- B. from 1 to 16
- C. from 1 to 32
- D. from 1 to 48

Answer: C

NEW QUESTION 44

Refer to the exhibit



An engineer is configuring a QoS policy to shape traffic for VLAN 100 on a subinterface Which policy configuration accomplishes the task?

- A)
- ```

policy-map shape_GigabitEthernet4.100
 class class-default
 service-policy xyz_QoS-model
 shape average 100000000
!
interface GigabitEthernet4.100
 encapsulation dot1Q 200
 service-policy output shape_GigabitEthernet4.100

```
- B)
- ```

policy-map shape_GigabitEthernet4.100
  class class Queue0
    service-policy xyz_QoS-model
    shape average 100000000
!
interface GigabitEthernet4.100
  encapsulation dot1Q 200
  service-policy output shape_GigabitEthernet4.100
  
```
- C)
- ```

policy-map shape_GigabitEthernet4.200
 class class-default
 service-policy xyz_QoS-model
 shape average 100000000
!
interface GigabitEthernet4.100
 encapsulation dot1Q 100
 service-policy output shape_GigabitEthernet4.200

```
- D)
- ```

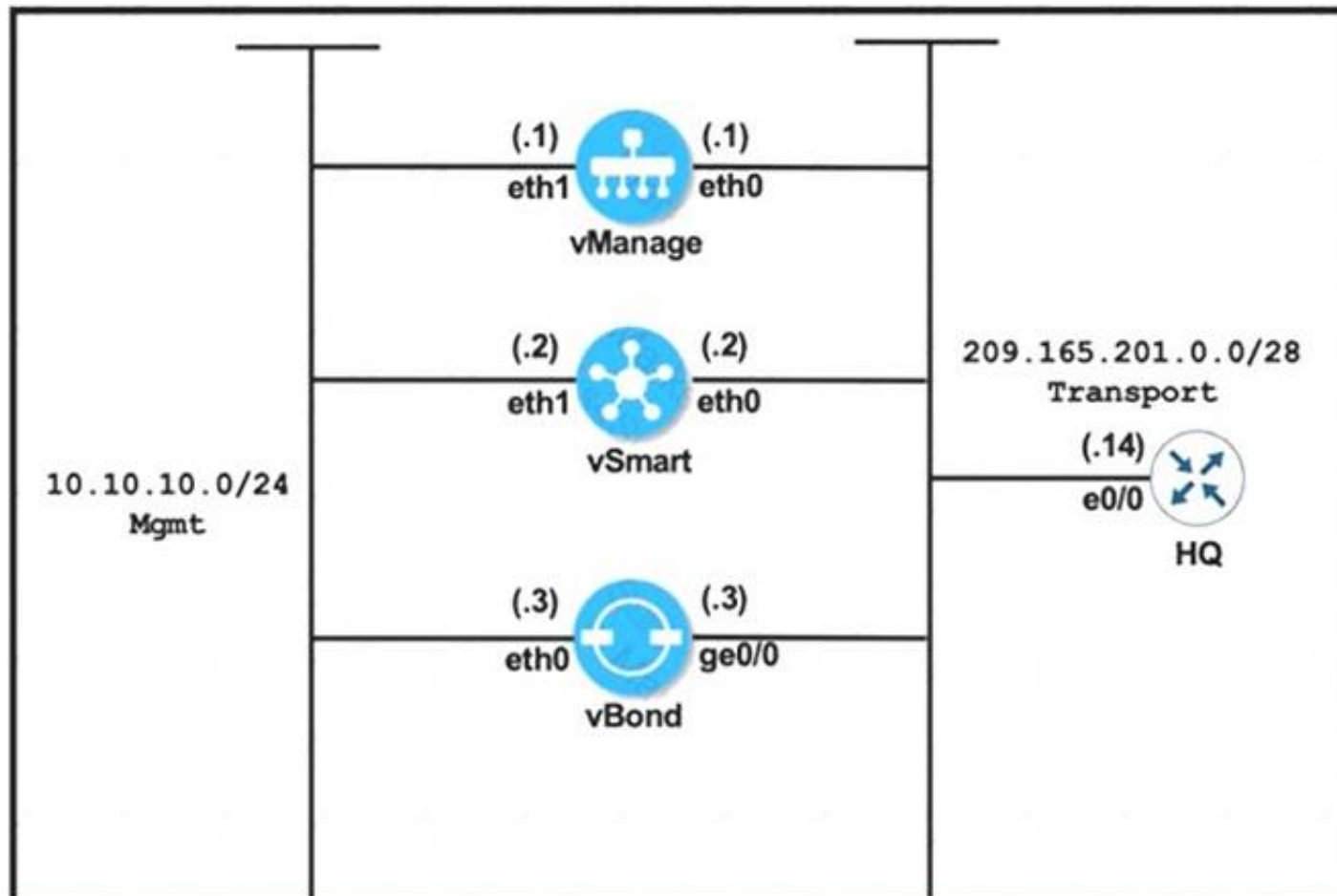
policy-map shape_GigabitEthernet4.200
  class class Queue0
    service-policy xyz_QoS-model
    shape average 100000000
!
interface GigabitEthernet4.100
  encapsulation dot1Q 100
  service-policy output shape_GigabitEthernet4.100
  
```

- A. Option A
- B. Option B
- C. Option C
- D. Option D

Answer: C

NEW QUESTION 46

Refer to the exhibit



vManage	vBond
<pre> system system-ip 10.10.10.101 host-name vManage site-id 1 clock timezone Europe/London vbond 209.165.201.3 organization-name Cisco.com ! vpn 0 interface eth0 ip address 209.165.201.1/28 no shut tunnel-interface allow-service all ip route 0.0.0.0/0 209.165.201.14 ! commit </pre>	<pre> system system-ip 10.10.10.103 host-name vBond site-id 1 clock timezone Europe/London vbond 209.165.201.3 local organization-name viptela.com ! vpn 0 interface ge0/0 ip address 209.165.201.3/28 no shut tunnel-interface encapsulation ipsec allow-service all ip route 0.0.0.0/0 209.165.201.14 ! commit </pre>

vManage and vBond have an issue establishing a connection with each other Which action resolves the issue?

- A. Reconfigure the system IPs to belong to the same subnet
- B. Change the organization name on both controllers to match viptela.com.
- C. Remove the encapsulation ipsec command under the tunnel interface of vBond
- D. Configure the encapsulation ipsec command under the tunnel interface on vManage

Answer: B

Explanation:

<https://community.cisco.com/t5/sd-wan-and-cloud-networking/encapsulation-ipsec-on-vbond/td-p/4451149> "encapsulation" command under vBond tunnel-interface has no meaning and effect.

NEW QUESTION 47

An engineer wants to change the configuration of the certificate authorization mode from manual to automated. Which GUI selection will accomplish this?

- A. Maintenance > Security
- B. Configuration > Certificates
- C. Administration > Settings
- D. Tools > Operational Commands

Answer: C

Explanation:

Runbook to Request and Install Cisco PKI Certificates

1. Verify that you have satisfied the prerequisites and that you have added the Smart Account credentials.
2. Navigate to **Administration ► Settings ► Controller Certificate Authorization** and press Edit.
3. Select the **radio button Cisco Automated** (Recommended).

NEW QUESTION 49

Which component is used for stateful inspection of TCP, UDP, and ICMP flows in Cisco SD-WAN firewall policies?

- A. zones
- B. sites
- C. subnets
- D. interfaces

Answer: A

NEW QUESTION 52

A network administrator is configuring a centralized control policy based on match action pairs for multiple conditions, which order must be configured to prefer Prefix List over TLOC and TLOC over Origin?

- A. highest to lowest sequence number
- B. nonsequential order
- C. deterministic order
- D. lowest to highest sequence number

Answer: D

Explanation:

A centralized control policy consists of a series of numbered (ordered) sequences of match-action pairs that are evaluated in order, **from lowest sequence number to highest sequence number**. When a route or TLOC matches the match conditions, the associated action or actions are taken and policy evaluation on that packets stops. Keep this process in mind as you design your policies to ensure that the desired actions are taken on the items subject to policy.

If a route or TLOC matches no parameters in any of the sequences in the policy configure, it is, by default, rejected and discarded.

NEW QUESTION 54

An engineer is configuring a shaping rate of 1 Mbps on the WAN link of a WAN Edge router Which configuration accomplishes this task'?

- ☒ vpn vpn-id
interface interface-name
shaping-rate 1000000
- ☐ vpn vpn-id
interface interface-name
shaping-rate 1000
- ☐ interface interface-name
vpn vpn-id
shaping-rate 1000000
- ☒ interface interface-name
vpn vpn-id
shaping-rate 1000

- A. Option A
- B. Option B
- C. Option C
- D. Option D

Answer: B

NEW QUESTION 57

Which platform is a Cisco SD-WAN virtual platform?

- A. Cisco ISR 4000
- B. Cisco Nexus 1000V
- C. Cisco CSR 1000V
- D. Cisco ASR 1000

Answer: C

NEW QUESTION 59

When the VPN membership policy is being controlled at the vSmart controller, which policy disallows VPN 1 at sites 20 and 30?

A)

```
apply-policy
site-list 20-30
vpn-membership disallow-vpn 1
!
!
policy
lists
site-list 20-30
site-id 20
site-id 30
!
vpn-list VPN 1
vpn 10
vpn 20
!
!
vpn-membership disallow-vpn 1
sequence 10
match
vpn-list VPN 1
!
action reject
!
!
default-action accept
```

B)

```
policy
lists
site-list 20-30
site-id 20
site-id 30
!
prefix-list drop-list
ip-prefix 10.200.1.0/24
!
!
control-policy drop-unwanted-routes
sequence 10
match route
prefix-list drop-list
!
action reject
!
!
default-action accept
```

C)


```
apply-policy
  site-list 20-30
    vpn-membership disallow-vpn1
  !
!
policy
  lists
    site-list 20-30
      site-id 20
      site-id 30
    !
  !
  vpn-membership disallow-vpn1
    sequence 10
      match vpn-id 1
      action reject
    !
  !
  default-action accept
```

D)

```
policy
  lists
    site-list BP-Sites
      site-id 10
      site-id 20
    vpn-list All-BPs
      vpn 100
      vpn 101
    vpn-list Enterprise-BP
      vpn 200
  control-policy import-BPs-to-Enterprise
    sequence 10
      match route
      vpn-list All-BPs
    !
    action accept
    export-to vpn-list Enterprise-BP
  !
  !
  !
  default-action accept
```

- A. Option A
- B. Option B
- C. Option C
- D. Option D

Answer: C

NEW QUESTION 62

A network administrator is configuring VRRP to avoid a traffic black hole when the transport side of the network is down on the master device. What must be configured to get the fastest failover to standby?

- A. lower timer interval
- B. prefix-list tracking
- C. higher group ID number
- D. OMP tracking

Answer: B

Explanation:


```
vEdge(config-vrrp)# track-prefix-list list-name
```

If all OMP sessions are lost, VRRP failover occurs as described for the track-omp option. In addition, if reachability to all the prefixes in the list is lost, VRRP failover occurs immediately, without waiting for the OMP hold timer to expire, thus minimizing the amount of overlay traffic is dropped while the vEdge routers determine the VRRP master.

NEW QUESTION 67

Which two metrics must a cloud Edge router use to pick the optimal path for a SaaS application reachable via a gateway site? (Choose two.)

- A. HTTP loss and latency metrics to the SaaS application
- B. ICMP loss and latency metrics to the SaaS application
- C. BFD loss and latency metrics to the gateway site
- D. BFD loss and latency metrics to the SaaS application
- E. HTTP loss and latency metrics to the gateway site

Answer: AC

Explanation:

-The gateway vEdge uses HTTP to obtain SaaS application performance information - The client vEdge will use BFD over the IPsec tunnel to the gateway site to obtain client>gateway path performance information

<https://www.cisco.com/c/dam/en/us/td/docs/solutions/CVD/SDWAN/CVD-SD-WAN-Cloud-onRamp-for-SaaS>

NEW QUESTION 72

Which policy tracks path characteristics such as loss, latency, and jitter in vManage?

- A. VPN
- B. control
- C. app-route
- D. data

Answer: C

Explanation:

<https://www.cisco.com/c/en/us/td/docs/routers/sdwan/configuration/policies/ios-xe-17/policies-book-xe/applicat>

NEW QUESTION 73

An engineer wants to automate the onboarding process for a WAN Edge router with vManage. Which command will accomplish this?

- A. request vedge-cloud activate chassis-number <chassis-number> serial <serial>
- B. request vedge-cloud activate chassis-number <chassis-number> token <token-number>
- C. request vedge-cloud activate serial <serial> token <token-number>
- D. request vedge-cloud activate chassis-number <chassis-number> organization <organization>

Answer: B

Explanation:

```
vedge#  
vedge# vedge# request vedge-cloud activate chassis-number 19f2059b-5fd1-9027-a665-24c33d223247 token 22ee00b3a0c22d8269725d1cb495b718
```

NEW QUESTION 75

What is the default value for the number of paths advertised per prefix in the OMP feature template?

- A. 4
- B. 8
- C. 12
- D. 16

Answer: C

NEW QUESTION 79

Which feature delivers traffic to the Cisco Umbrella SIG cloud from a Cisco SD-WAN domain?

- A. L2TPv3 tunnel
- B. IPsec tunnel
- C. local umbrella agent
- D. source NAT

Answer: B

NEW QUESTION 82

A company deploys a Cisco SD-WAN solution but has an unstable Internet connection. When the link to vSmart comes back up, the WAN Edge router routing table is not refreshed, and some traffic to the destination network is dropped. The headquarters is the hub site, and it continuously adds new sites to the SD-WAN network. An engineer must configure route refresh between WAN Edge and vSmart within 2 minutes. Which configuration meets this requirement?

- ☐ omp
no shutdown
graceful-restart
timers
eor-timer 120
- ☐ omp
no shutdown
no graceful-restart
- ☐ omp
no shutdown
graceful-restart
timers
holdtime 120
- ☐ omp
no shutdown
graceful-restart
timers
advertisement-interval 120

- A. Option A
- B. Option B
- C. Option C
- D. Option D

Answer: A

NEW QUESTION 87

Two sites have one WAN Edge each WAN Edge has two public TLOCs with no restriction configured. There is full reachability between the TLOCs. How many data tunnels are formed on each Edge router?

- A. 2
- B. 8
- C. 6
- D. 4

Answer: D

NEW QUESTION 91

Which device information is required on PNP/ZTP to support the zero-touch onboarding process?

- A. interface IP address
- B. system IP address
- C. public DNS entry
- D. serial and chassis numbers

Answer: D

NEW QUESTION 93

Refer to the exhibit.

PEER TYPE	PEER PROTOCOL	PEER SYSTEM ID	SITE IP	DOMAIN ID	PEER		PEER		PUBLIC PORT	CONTROLLER		GROUP STATE
					PRIVATE IP	PRIVATE PORT	PRIVATE IP	PRIVATE PORT		LOCAL	COLOR	
vbond	dtls	-	0	0	1.3.25.25	12346	1.3.25.25	12346	gold	connect		0
vbond	dtls	-	0	0	1.3.25.25	12346	1.3.25.25	12346	silver	connect		0

An engineer is troubleshooting a control connection Issue. What does "connect" mean in this how control connections output?

- A. Control connection is down
- B. Control connection is connected
- C. Control connection attempt is in progress
- D. Control connection is up

Answer: C

NEW QUESTION 97

What prohibits deleting a VNF image from the software repository?

- A. if the image is stored by vManage
- B. if the image is referenced by a service chain
- C. if the image is uploaded by a WAN Edge device
- D. if the image is included in a configured policy

Answer: D

NEW QUESTION 101

What is the behaviour of vBond orchestrator?

- A. It maintains vSmart and WAN Edge routers secure connectivity state
- B. it builds permanent connections with vSmart controllers
- C. it updates vSmart of WAN Edge routers behind NAT devices using OMP.
- D. It builds permanent connections with WAN Edge routers

Answer: A

NEW QUESTION 106

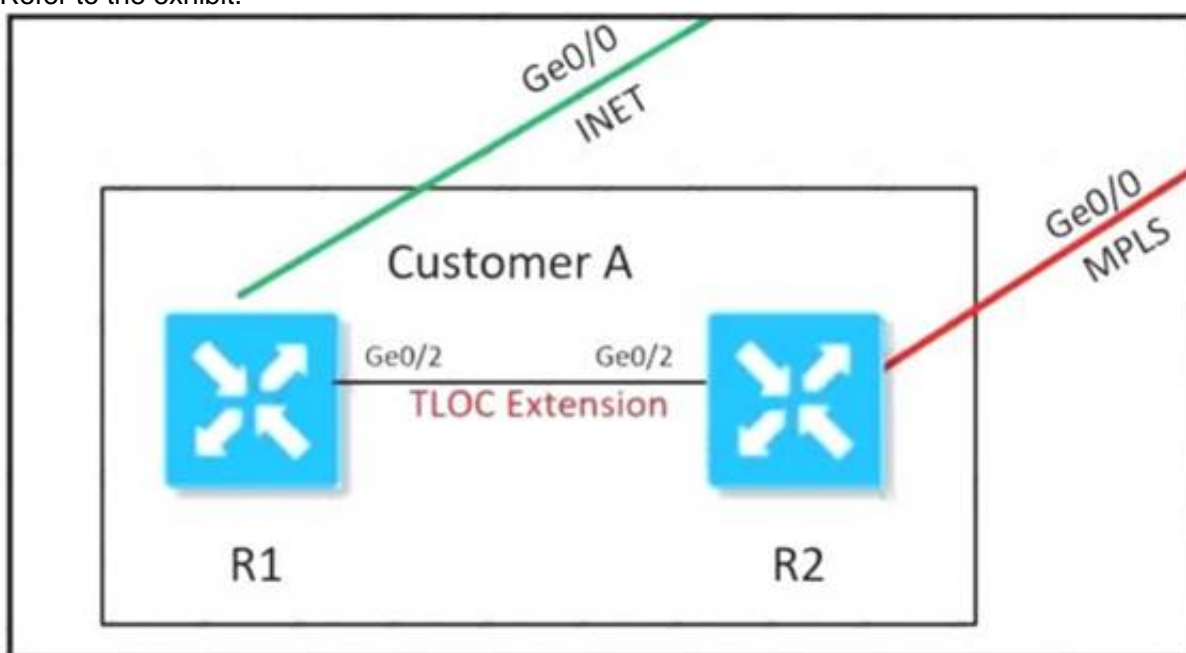
Which combination of platforms are managed by vManage?

- A. ISR4321, ASR1001, ENCS, ISRV
- B. ISR4351, ASR1002HX, vEdge2000, vEdge Cloud
- C. ISR4321, ASR1001, Nexus, ENCS
- D. ISR4351, ASR1009, vEdge2000, CSR1000v

Answer: A

NEW QUESTION 111

Refer to the exhibit.



An MPLS connection on R2 must extend to R1 Users behind R1 must have dual connectivity for data traffic Which configuration provides R1 control connectivity over the MPLS connection?

A)

```
R1
interface ge0/2
ip address 34.34.34.1/30
tloc-extension ge0/1
tunnel-interface
color mpls
```

```
R2
interface ge0/2
ip address 34.34.34.2/30
tloc-extension ge0/0
tunnel-interface
color public-internet
```

B)

```
R1
interface ge0/2
ip address 34.34.34.1/30
tloc-extension ge0/1
```

```
R2
interface ge0/0
ip address 34.34.34.2/30
tunnel-interface
color mpls
```

C)

```
vpn 0
router
  ospf
    redistribute omp route-policy OSPF_Route_Policy
    area 0
    interface ge0/2
    exit
  lists
    prefix-list W2_Loopback
    ip-prefix 10.10.10.5/32
    !
    route-policy OSPF_Route_Policy
    sequence 1
    match
      address W2_Loopback
    !
    action accept
    set
      metric 100
      metric-type type2
```

D)

```
vpn 10
name ***** Service VPN 10 *****
router
  ospf
    redistribute omp route-policy OSPF_Route_Policy
    area 0
    interface ge0/2
    exit
  lists
    prefix-list W2_Loopback
    ip-prefix 10.10.10.5/32
    !
    route-policy OSPF_Route_Policy
    sequence 1
    match
      address W2_Loopback
    !
    action accept
```

- A. Option A
- B. Option B
- C. Option C
- D. Option D

Answer: D

NEW QUESTION 113

Which attributes are configured to uniquely Identify and represent a TLOC route?

- A. system IP address, link color, and encapsulation
- B. firewall, IPS, and application optimization
- C. site ID, tag, and VPN
- D. origin, originator, and preference

Answer: A

Explanation:

<https://www.cisco.com/c/dam/en/us/td/docs/solutions/CVD/SDWAN/CVD-SD-WAN-Design-2018OCT.pdf>

NEW QUESTION 118

How is multicast routing enabled on devices in the Cisco SD-WAN overlay network?

- A. The WAN Edge routers originate multicast service routes to the vSmart controller via OMP, which then forwards joins for requested multicast groups based on IGMP v1 or v2 toward the source or PIM-RP as specified in the original PIM join message.
- B. The vSmart controller originates multicast service routes to the WAN Edge routers via OMP, which then forwards joins for requested multicast groups based on IGMP v1 or v2 toward the source or PIM-RP as specified in the original PIM join message
- C. The vSmart controller originates multicast service routes to the WAN Edge routers via OMP, which then forwards joins (or requested multicast groups based on IGMP v2 or v3 toward the source or PIM-RP as specified in the original PIM join message
- D. The WAN Edge routers originate multicast service routes to the vSmart controller via OM
- E. which then forwards joins for requested multicast groups based on iGMP v2 or v3 toward the source or PIM-RP as specified in the original PIM join message

Answer: A

Explanation:

<https://www.cisco.com/c/en/us/td/docs/routers/sdwan/configuration/routing/ios-xe-17/routing-book-xe/m-multic>

NEW QUESTION 120

An engineer is troubleshooting a certificate issue on vEdge. Which command is used to verify the validity of the certificates?

- A. show control local-properties
- B. show control summary

- C. show certificate installed
- D. show certificate status

Answer: A

NEW QUESTION 121

When redistribution is configured between OMP and BGP at two Data Center sites that have Direct Connection interlink, which step avoids learning the same routes on WAN Edge routers of the DCs from LAN?

- A. Define different VRFs on both DCs
- B. Set same overlay AS on both DC WAN Edge routers
- C. Set down-bit on Edge routers on DC1
- D. Set OMP admin distance lower than BGP admin distance

Answer: B

Explanation:

Typically, there are more than one datacenters for HA/redundancy requirements. After successful migration of the first datacenter, migrate the second datacenter in a similar method as explained in this section. Note that a routing loop can occur if there is a backdoor link between the datacenter sites and route advertisement is configured between the two datacenters. To avoid the loop, any of the three methods explained below can be used:

1. Use the same Autonomous System Numbers (ASN) on edge routers of the two datacenters. Because of the same ASN, the AS-PATH attribute will avoid learning the same prefixes on the edge routers that are advertised by the other datacenter towards the LAN side.

2. Use overlay-AS to insert Overlay Management Protocol (OMP) AS number when redistributing the routes from OMP into LAN side towards DC LAN. Configure all DC SD-WAN edge routers with the same overlay-as. This allows the edges to filter the routes advertised by the other DCs edge devices towards the LAN side and prevents redistributing the same routes back into OMP.

3. Use tags or communities to mark the prefixes at one datacenter when redistributing to DC LAN and filter on the edge of the other datacenter when learning advertisements from the LAN side.

NEW QUESTION 123

Refer to the exhibit.

LOCAL	PEER REMOTE	PEER REPEAT	PEER SYSTEM	SITE	DOMAIN	PEER PRIVATE	PEER PUBLIC	PEER PUBLIC
INSTANCE TYPE	PROTOCOL	STATE	IP	ID	ID	PRIVATE IP	PORT	PORT
REMOTE COLOR	STATE	ERROR	ERROR	ERROR	COUNT	DOWNTIME		
0	vsmart	tle	1.1.1.3	100	1	100.1.1.3	23456	100.1.1.3
default	trying	DONFAIL	NOERR	10001	2020-01-01T10:01:20+0000			23456

The control connection is failing. Which action resolves the issue?

- A. import vSmart in vManager
- B. Validate the certificates authenticity on vSmart
- C. Upload the WAN Edge list on vManage.
- D. Restore the reachability to the vSmart

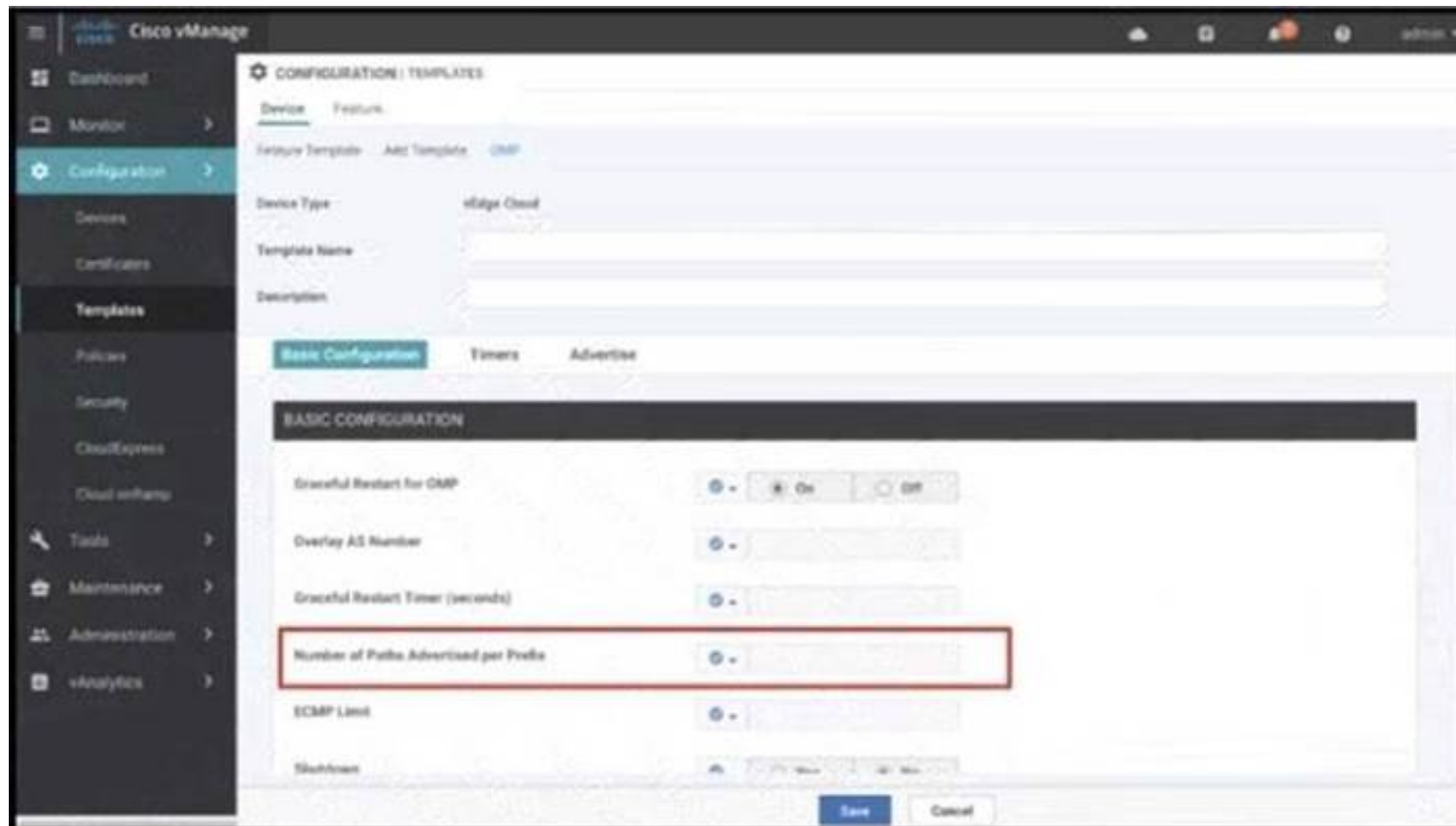
Answer: D

Explanation:

<https://www.cisco.com/c/en/us/support/docs/routers/sd-wan/214509-troubleshoot-control-connections.html>

NEW QUESTION 124

Refer to the exhibit.



A network administrator is configuring OMP in vManage to advertise all the paths for the same prefix from a site that has two WAN Edge devices. Each WAN Edge device is connected to three ISPs and two private MPLS transports. What is the minimum value for "Number of Paths advertised per Prefix" that should be configured?

- A. 2
- B. 3
- C. 5
- D. 10

Answer: D

NEW QUESTION 126

An engineer must configure two branch WAN Edge devices where an Internet connection is available and the controllers are in the headquarters. The requirement is to have IPsec VPN tunnels established between the same colors. Which configuration meets the requirement on both WAN Edge devices?

WAN Edge 1

```
vpn 0
interface ge0/0
ip address 10.0.0.1/24
ipv6 dhcp-client
tunnel-interface
color biz-internet restrict
encapsulation ipsec
```

WAN Edge 2

```
vpn 0
interface ge0/0
ip address 10.0.0.2/24
ipv6 dhcp-client
tunnel-interface
color default
encapsulation ipsec
```

WAN Edge 1

```
vpn 0
interface ge0/0
ip address 10.0.0.1/24
ipv6 dhcp-client
tunnel-interface
color default
encapsulation ipsec
```

WAN Edge 2

```
vpn 0
interface ge0/0
ip address 10.0.0.2/24
ipv6 dhcp-client
tunnel-interface
color default
encapsulation ipsec
```

WAN Edge 1

```
vpn 0
interface ge0/0
ip address 10.0.0.1/24
ipv6 dhcp-client
tunnel-interface
color public-internet restrict
encapsulation ipsec
```

WAN Edge 2

```
vpn 0
interface ge0/0
ip address 10.0.0.2/24
ipv6 dhcp-client
tunnel-interface
color gold restrict
encapsulation ipsec
```

WAN Edge 1

```
vpn 0
interface ge0/0
ip address 10.0.0.1/24
ipv6 dhcp-client
tunnel-interface
color gold restrict
encapsulation ipsec
```

WAN Edge 2

```
vpn 0
interface ge0/0
ip address 10.0.0.2/24
ipv6 dhcp-client
tunnel-interface
color gold restrict
encapsulation ipsec
```

- A. Option A
- B. Option B
- C. Option C
- D. Option D

Answer: D

NEW QUESTION 127

Which protocol is used for the vManage to connect to the vSmart Controller hosted in Cloud?

- A. PnP Server
- B. ZTP
- C. NETCONF
- D. HTTP

Answer: C

Explanation:

Netconf and CLI—Netconf is a standards-based protocol used by Cisco vManage to provision a Cisco vSmart Controller.

NEW QUESTION 131

Which TCP Optimization feature is used by WAN Edge to prevent unnecessary retransmissions and large initial TCP window sizes to maximize throughput and achieve a better quality?

- A. SEQ
- B. SYN
- C. RTT
- D. SACK

Answer: D

Explanation:

TCP Optimization

The Cisco SD-WAN TCP Optimization feature uses TCP Selective Acknowledgement (SACK) to prevent unnecessary retransmissions and large initial TCP window sizes in order to maximize throughput and achieve a better quality of experience.

NEW QUESTION 134

An engineer must configure local redundancy on a site. Which configuration accomplish this task?

- A. vpn 0interface interface-name
- B. tloc extension interlace nametloc extension interface interface name
- C. vpn 0tloc extension interface
- D. interface-flameinterface interface-name tloc-extension

Answer: A

NEW QUESTION 135

In a Cisco SD-WAN network, which component is responsible for distributing route and policy information via the OMP?

- A. vManage
- B. vSmart Controller
- C. vBond Orchestrator
- D. WAN Edge Router

Answer: B

Explanation:

The Cisco vSmart Controller maintains a centralized route table that stores the route information, called OMP routes, that it learns from the vEdge routers and from any other Cisco vSmart Controllers in the Cisco SD-WAN overlay network. Based on the configured policy, the Cisco vSmart Controller shares this route information with the Cisco vEdge network devices in the network so that they can communicate with each other.

NEW QUESTION 139

Which two services are critical for zero touch provisioning on-boarding? (Choose two)

- A. SNMP
- B. DNS
- C. DHCP
- D. AAA
- E. EMAIL

Answer: BC

NEW QUESTION 141

Refer to the exhibit.

```

policy
lists
!
tloc-list dc-preference-east
tloc 100.100.100.100 color mpls
encap ipsec preference 200
tloc 101.101.101.101 color mpls
encap ipsec preference 400
!
site-list sites-region-west
site-id 1-20
!
site-list sites-region-east
site-id 21-40
!
site-list dc-sites
site-id 100-101

control-policy adv-dc-preference-west
sequence 10
match route
site-list dc-sites
!
action accept
set
tloc-list dc-preference-east
!

!
default-action accept
!
control-policy adv-dc-preference-east
sequence 10
match route
site-list dc-sites
!
action accept
set
tloc-list dc-preference-east
!

!
default-action accept
!
apply-policy
site-list sites-region-west
control-policy adv-dc-preference-west
out
!
site-list sites-region-east
control-policy adv-dc-preference-east
out
!
!

```

A customer wants to implement primary and secondary Cisco SD-WAN overlay routing for prefixes that are advertised for both data centers. The east data center

(TLOC 101.101.101.101) is primary for east sites, and the west data center (TLOC 100.100.100.100) is primary for west sites. Which configuration change achieves this objective?

A.

```
lists
  tloc-list dc-preference-east
  tloc 100.100.100.100 color mpis encap ipsec preference 400
  tloc 101.101.101.101 color mpis encap ipsec preference 200

control-policy adv-dc-preference-west
sequence 10
match route
  site-list dc-sites
  !
action accept
set
  tloc-list dc-preference-west
  !
!
default-action accept
```

B.

```
lists
  tloc-list dc-preference-west
  tloc 100.100.100.100 color mpis encap ipsec preference 200
  tloc 101.101.101.101 color mpis encap ipsec preference 400

control-policy adv-dc-preference-west
sequence 10
match route
  site-list dc-sites
  !
action accept
set
  tloc-list dc-preference-west
  !
!
default-action accept
```

C.

```
tloc-list dc-preference-east
tloc 100.100.100.100 color mpis encap ipsec preference 400
tloc 101.101.101.101 color mpis encap ipsec preference 200
```

D.

```
control-policy adv-dc-preference-west
sequence 10
match route
  site-list dc-sites
  !
action accept
set
  tloc-list dc-preference-west
  !
!
default-action accept
```

- A. Option A
- B. Option B
- C. Option C
- D. Option D

Answer: A

NEW QUESTION 144

Which set of elements are verified by the controller to confirm the identity of edge devices?

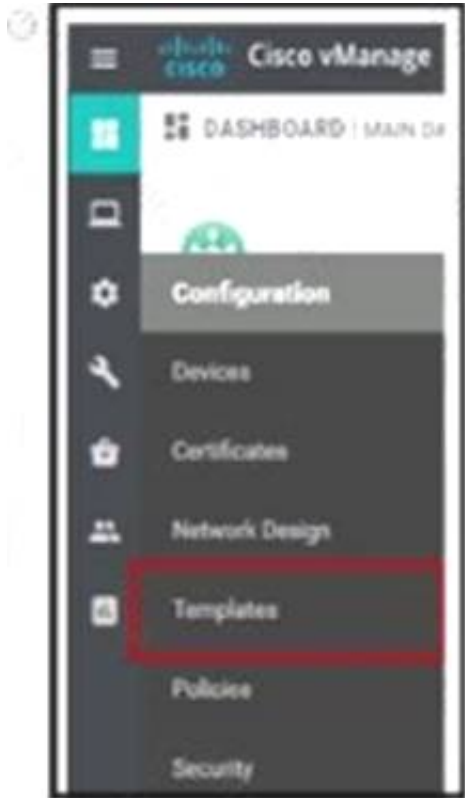
- A. certificates, organization name and serial number of the device
- B. organization name serial number and system IP of the device
- C. certificates, organization name, and vBond domain
- D. certificates, system IP, and vBond domain

Answer: A

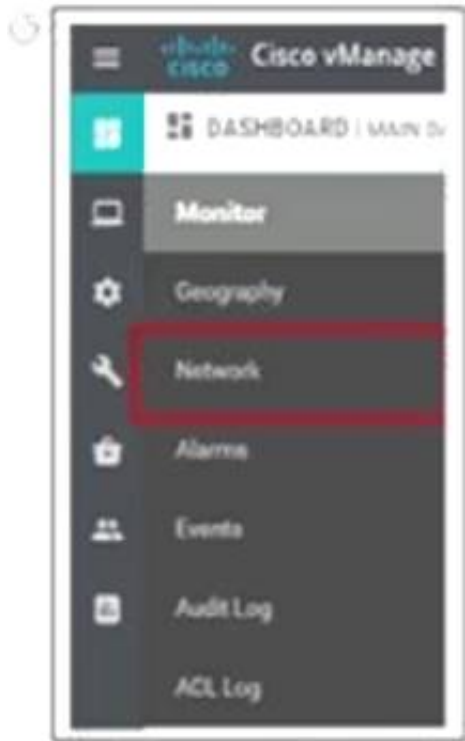
NEW QUESTION 149

Company ABC has decided to deploy the controllers using the On-Prem method. How does the administrator upload the WAN Edge list to the vManage?

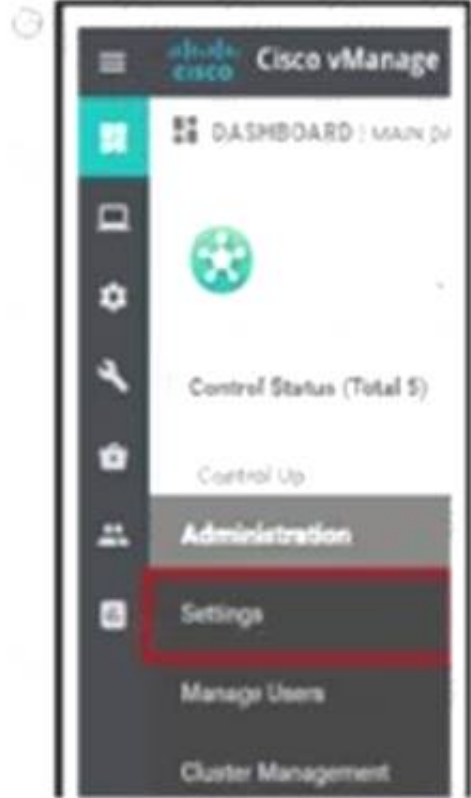
A)



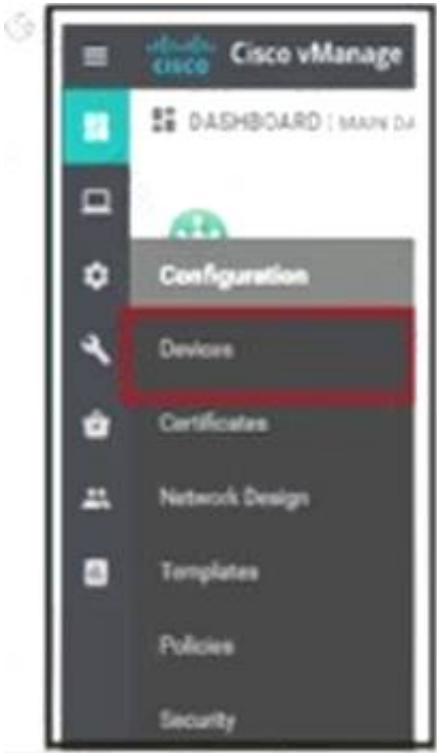
B)



C)



D)



- A. Option A
- B. Option B
- C. Option C
- D. Option D

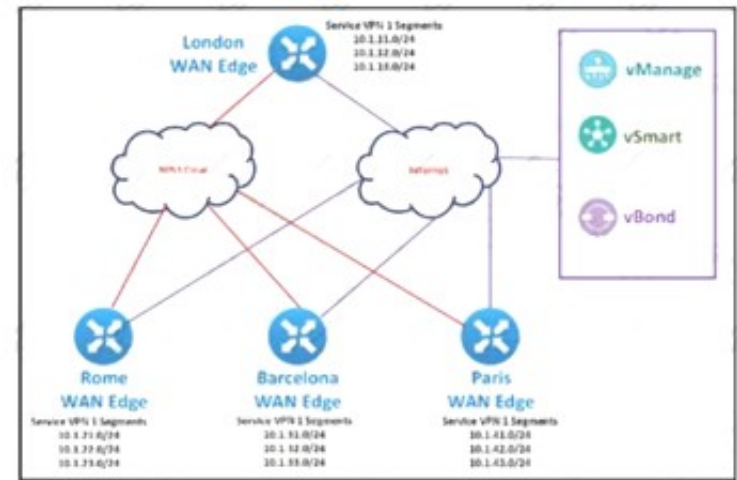
Answer: D

Explanation:

https://sdwan-docs.cisco.com/Product_Documentation/vManage_Help/Release_18.3/Configuration/Devices

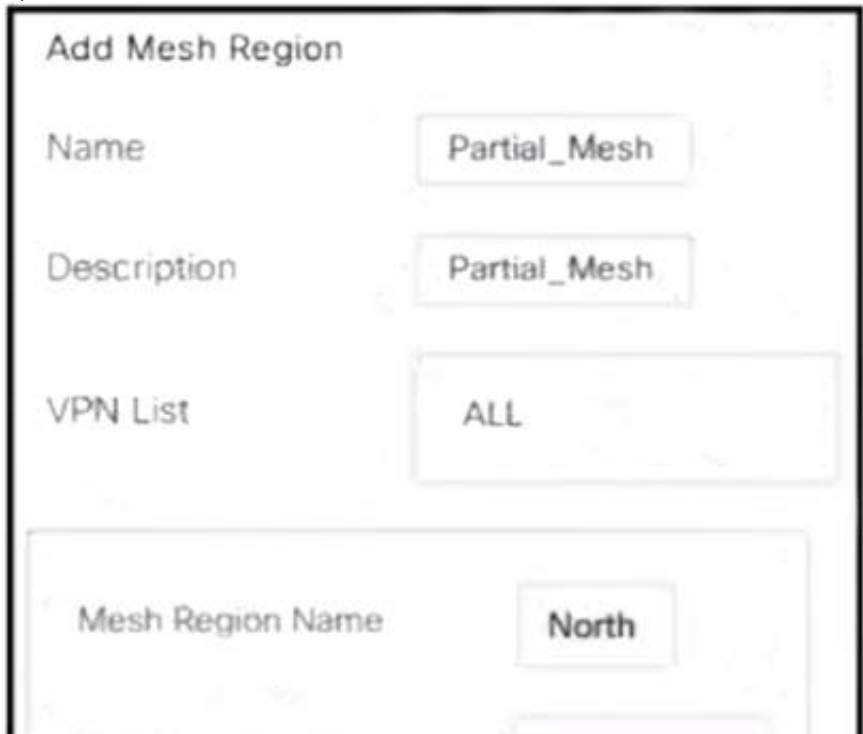
NEW QUESTION 153

Refer to the exhibit.



The SD-WAN network is configured with a default full-mesh topology. The SD-WAN engineer wants the Barcelona WAN Edge to use MPLS TLOC as the preferred TLOC when communicating with Rome site. Which configuration must the engineer use to create a list to select MPLS color toward the Rome TLOC?

A)



B)

Add Mesh Region

Name:

Description:

VPN List:

Mesh Region Name:

C)

Add Control Policy

 **TLOC**
 Create a policy to apply to TLOCs

D)

Add VPN Membership Policy

VPN Membership Name:

Description:

Site List:

VPN Lists:

- A. Option A
- B. Option B
- C. Option C
- D. Option D

Answer: C

NEW QUESTION 157

Which two actions are necessary to set the Controller Certificate Authorization mode to indicate a root certificate? (Choose two)

- A. Select the Controller Certificate Authorization mode that is recommended by Cisco
- B. Change the organization name of the Cisco SO-WAN fabric.
- C. Upload an SSL certificate to vManape,
- D. Select a private certificate signing authority instead of a public certificate signing authority
- E. Select a validity period from the drop-down menu

Answer: CD

NEW QUESTION 160

An engineer must apply the configuration for certificate installation to vBond Orchestrator and vSmart Controller. Which configuration accomplishes this task?

- vpn 0
interface eth1
ip address 199.1.1.1/28
tunnel-interface
allow-service sshd
allow-service netconf
no shutdown
- vpn 512
interface eth1
ip address 199.1.1.1/28
tunnel-interface
allow-service sshd
allow-service netconf
- vpn 0
interface eth1
ip address 199.1.1.1/28
tunnel-interface
allow-service sshd
allow-service ntp
- vpn 512
interface eth1
ip address 199.1.1.1/28
tunnel-interface
allow-service netconf
no allow-service ntp
no allow-service stun

- A. Option A
B. Option B
C. Option C
D. Option D

Answer: A

NEW QUESTION 165

What is the maximum number of IPsec that are temporarily created and converged on a new set of IPsec SAs in the pairwise keys process during a simultaneous rekey?

- A. 2
B. 4
C. 6
D. 8

Answer: B

NEW QUESTION 169

An engineer is troubleshooting a vEdge router and identifies a "DCONFAIL – DTLS connection failure" message. What is the problem?

- A. certificate mismatch
B. organization mismatch
C. memory issue
D. connectivity issue

Answer: D

Explanation:

<https://community.cisco.com/t5/networking-documents/sd-wan-routers-troubleshoot-control-connections/ta-p/38>

NEW QUESTION 172

An engineer must automate certificate signing through Cisco. Which vManage configuration achieves this task?

- A)
vpn 0
dns 208.67.222.222 primary
allow-service dns
allow-service sshd
allow-service netconf
- B)
vpn 0
allow-service dns
allow-service sshd
allow-service netconf
- C)
vpn 512
dns 208.67.222.222 primary
allow-service dns
allow-service sshd
allow-service netconf
- D)

```
vpn 512
allow-service dns
allow-service sshd
allow-service netconf
```

- A. Option A
- B. Option B
- C. Option C
- D. Option D

Answer: A

NEW QUESTION 175

In a Cisco SD-WAN architecture, what is the role of the WAN Edge?

- A. It provides orchestration to assist in automatic provisioning of WAN Edge routers and overlay
- B. It is the management plane responsible for centralized configuration and monitoring
- C. It is the control plane that builds and maintains network topology
- D. It is the data plane that is responsible for forwarding traffic

Answer: D

Explanation:

Cisco WAN Edge routers are responsible for establishing the network fabric and forwarding traffic. Cisco WAN Edge routers come in multiple forms, virtual and

NEW QUESTION 177

Where on vManage does an engineer find the details of control node failure?

- A. Alarms
- B. Events
- C. Audit log
- D. Network

Answer: A

Explanation:

https://www.cisco.com/c/en/us/td/docs/routers/sdwan/vManage_How-Tos/vmanage-howto-book/m-troubleshoot

NEW QUESTION 178

Which feature template configures OMP?

A)

Section	Parameter	Type	Variable/value
Authentication	Authentication Order	Drop-down	local
Local	User/admin/ Password	Device Specific	user_admin_passwd

B)

Section	Parameter	Type	Variable/value
Basic configuration	Number of paths advertised per prefix	Global	16
Advertise	Radio	Global	Off
	Static	Global	Off

C)

Section	Parameter	Type	Variable/value
Server	Hostname/IP Address	Global	10.4.48.13
	VPN ID	Global	1
	Source interface	Global	loopback0

D)

Section	Parameter	Type	Variable/value
Basic configuration	VPN	Global	512
	Name	Global	Management VPN
IPv4 Route	Prefix	Global	0.0.0.0/0
	Gateway	Radio button	Next Hop
	Next Hop	Device Specific	vpn512_mgt_next_hop_ip_addr

- A. Option A
- B. Option B
- C. Option C
- D. Option D

Answer: B

NEW QUESTION 183

How is TLOC defined?

- A. It is represented by a unique identifier to specify a site in as SD-WAN architecture.
- B. It specifies a Cisco SD-WAN overlay in a multitenant vSMART deployment.
- C. It is a unique collection of GRE or iPsec encapsulation, link color, and system IP address.
- D. It is represented by group of QoS policies applied to a WAN Edge router.

Answer: C

NEW QUESTION 184

Refer to the exhibit.

```

policy
  policer ccnp
    rate 1000000
    burst 15000
    exceed drop
  !
access-list acl-guest
  sequence 1
  match
    source-ip 172.16.10.0/24
    destination-ip 172.16.20.0/24
    destination-port 20
    protocol 6
  !
  action accept
    policer ccnp
  !
  !
  default-action drop

```

Which QoS treatment results from this configuration after the access list acl-guest is applied inbound on the vpn1 interface?

- A. A UDP packet sourcing from 172.16.20.1 and destined to 172.16.10.1 is accepted
- B. A TCP packet sourcing from 172.16.10.1 and destined to 172.16.20.1 is dropped
- C. A UDP packet souring from 172.16.10.1 and destined to 172.16.20.1 is dropped.
- D. A TCP packet sourcing from 172.16.20.1 and destined to 172.16.10.1 is accepted

Answer: C

NEW QUESTION 188

A customer is receiving routes via OMP from vSmart controller for a specific VPN. The customer must provide access to the W2 loopback received via OMP to the OSPF neighbor on the service-side VPN, which configuration fulfils these requirements?


```
vpn 0
router
ospf
 redistribute omp route-policy OSPF_Route_Policy
 area 0
 interface ge0/2
 exit
lists
 prefix-list W2_Loopback
 ip-prefix 10.10.10.5/24
!
 route-policy OSPF_Route_Policy
 sequence 1
 match
 address W2_Loopback
!
 default action accept
 set
 metric 100
 metric-type type1
```

```
vpn 0
router
ospf
 redistribute omp route-policy OSPF_Route_Policy
 area 0
 interface ge0/2
 exit
lists
 prefix-list W2_Loopback
 ip-prefix 10.10.10.5/32
!
 route-policy OSPF_Route_Policy
 sequence 1
 match
 address W2_Loopback
!
 action accept
 set
 metric 100
 metric-type type1
```

```
vpn 0
router
ospf
 redistribute omp route-policy OSPF_Route_Policy
 area 0
 interface ge0/2
 exit
lists
 prefix-list W2_Loopback
 ip-prefix 10.10.10.5/32
!
 route-policy OSPF_Route_Policy
 sequence 1
 match
 address W2_Loopback
!
 action accept
 set
 metric 100
 metric-type type2
```

```
vpn 10
name "" Service VPN 10 ""
router
ospf
 redistribute omp route-policy OSPF_Route_Policy
 area 0
 interface ge0/2
 exit
lists
 prefix-list W2_Loopback
 ip-prefix 10.10.10.5/32
!
 route-policy OSPF_Route_Policy
 sequence 1
 match
 address W2_Loopback
```

```
ospf
 redistribute omp route-policy OSPF_Route_Policy
 area 0
 interface ge0/2
 exit
lists
 prefix-list W2_Loopback
 ip-prefix 10.10.10.5/32
!
 route-policy OSPF_Route_Policy
 sequence 1
 match
 address W2_Loopback
!
 action accept
 set
 metric 100
 metric-type type1
```

- A. Option A
- B. Option B
- C. Option C
- D. Option D
- E. Option E

Answer: D

Explanation:

Answer must start with VPN 10(service side) & should have metric-type 1 and not with VPN 0 (transport side)

NEW QUESTION 193

In which file format is a critical severity report downloaded from the MONITOR | ALARM tab in the vManage GUI?

- A. .txt
- B. .pdf
- C. .csv
- D. .xlsx

Answer: C

NEW QUESTION 195

Which feature builds transport redundancy by using the cross link between two redundant WAN Edge routers?

- A. OMP
- B. zero-touch provisioning
- C. quality of service
- D. TLOC extension

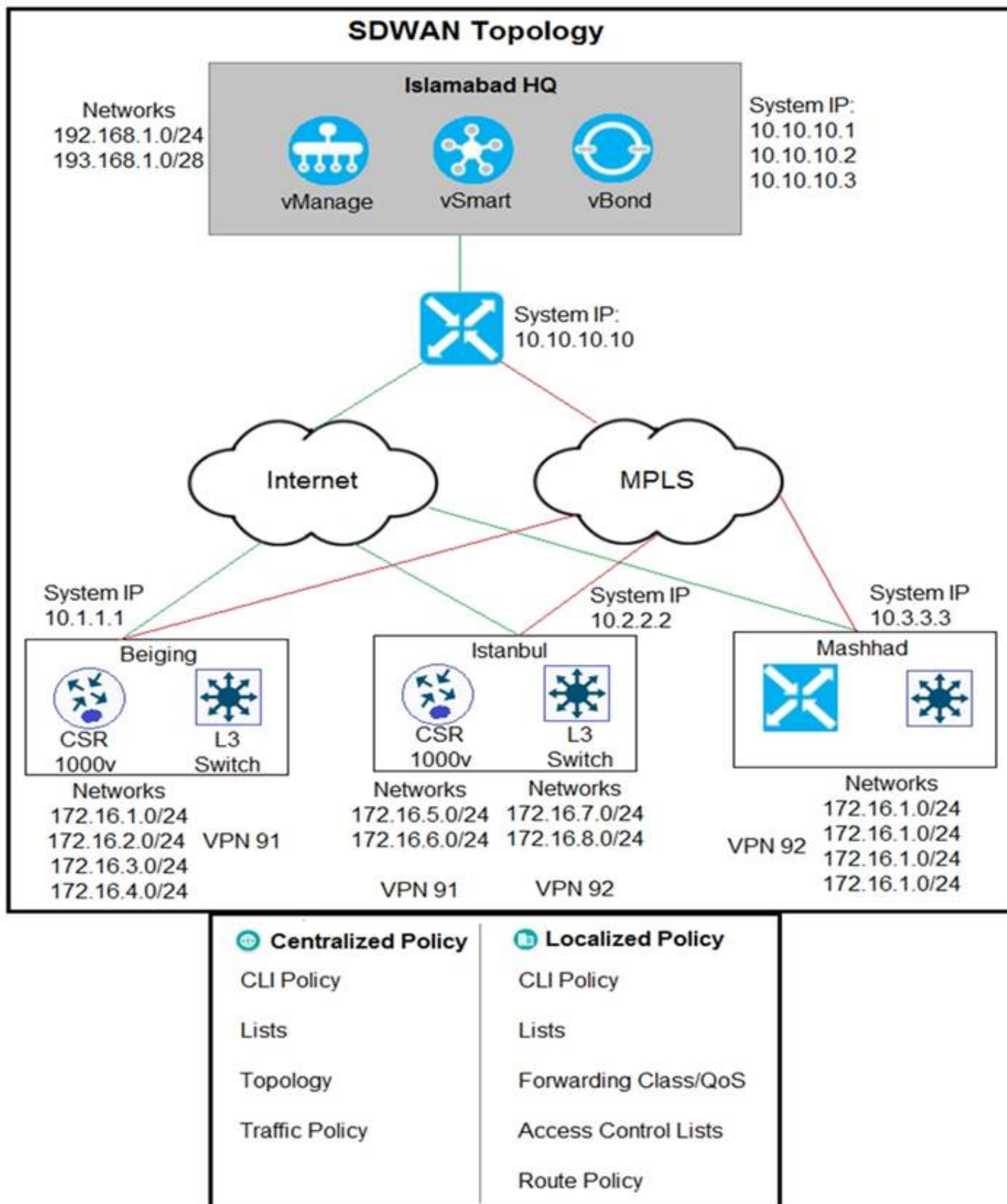
Answer: D

Explanation:

Features like TLOC extension help to build transport redundancy by using the cross link between two redundant WAN Edge routers. Network level redundancy is implemented by multiple geo-redundant data centers.

NEW QUESTION 199

Refer to the exhibit



The Cisco SD-WAN network is configured with a default full-mesh topology. Islamabad HQ and Islamabad WAN Edges must be used as the hub sites. Hub sites MPLS TLOC must be preferred when forwarding FTP traffic based on a configured SLA class list. Which policy configuration does the network engineer use to call the SLA class and set the preferred color to MPLS?

- A. Localized Policy, Route Policy
- B. Centralized Policy, Traffic Policy
- C. Localized Policy, Forwarding Class
- D. Centralized Policy Topology

Answer: B

NEW QUESTION 201

How should the IP addresses be assigned for all members of a Cisco vManage cluster located in the same data center?

- A. in the same subnet
- B. in overlapping IPs
- C. in each controller with a /32 subnet
- D. in different subnets

Answer: A

NEW QUESTION 204

After deploying Cisco SD-WAN the company realized that by default, all sites built direct IPsec VPN tunnels to each other. In their previous topology all spoke sites used the head office as their next hop for the LAN segment that belongs to network 40.0.0.0/16. The company wants to deploy its previous policy, which allows the 40.0.0.0/16 network that originates at the hub to advertise to the spokes. Which configuration meets the requirement?

A)

Manage Preference and Prefix Lists

Choose hub preference and add prefix lists as desired.

☐ All hubs are equal (All Spokes Sites connect to all Hubs) ☒ Advertise Hub TLOCs Hub_TLOCs x

Spoke Sites	Associated Hub Sites	Prefix Lists (Optional)
Hub	= Spokes	LAN_Segment x

↑↓ Drag & drop to reorder

B)

Manage Preference and Prefix Lists

Choose hub preference and add prefix lists as desired.

☒ All hubs are equal (All Spokes Sites connect to all Hubs) ☐ Advertise Hub TLOCs

Spoke Sites	Associated Hub Sites	Prefix Lists (Optional)
Spokes	Hub	LAN_Segment x

C)

Manage Preference and Prefix Lists

Choose hub preference and add prefix lists as desired.

☐ All hubs are equal (All Spokes Sites connect to all Hubs) ☒ Advertise Hub TLOCs Hub_TLOCs x

Spoke Sites	Associated Hub Sites	Prefix Lists (Optional)
Spokes	= Hub	LAN_Segment x

↑↓ Drag & drop to reorder

D)

Choose hub preference and add prefix lists as desired.

☐ All hubs are equal (All Spokes Sites connect to all Hubs) ☒ Advertise Hub TLOCs Hub_TLOCs x

Spoke Sites	Associated Hub Sites	Prefix Lists (Optional)
Spokes	= Hub	Select one or more prefix lists

↑↓ Drag & drop to reorder

- A. Option A
- B. Option B
- C. Option C
- D. Option D

Answer: D

NEW QUESTION 205

Which Cisco SD-WAN component facilitates the initial communication between WAN Edge devices to join the fabric?

- A. vSmart Controller
- B. WAN Edge Router
- C. vManage
- D. vBond Orchestrator

Answer: D

NEW QUESTION 207

Which command on a WAN Edge device displays the information about the colors present in the fabric that are learned from vSmart via OMP?

- A. show omp tlocs
- B. show omp sessions
- C. show omp peers
- D. show omp route

Answer: A

NEW QUESTION 210

A network administrator is configuring Qos on a vEdge 5000 router and needs to enable it on the transport side interface. Which policy setting must be selected to accomplish this goal?

- A. Cloud QoS Service side
- B. Cloud QoS
- C. NetFlow
- D. Application

Answer: B

Explanation:

9. Since the DC routers are vEdge 5000s, select the **Cloud QoS** checkbox to enable QoS on the transport side.

NEW QUESTION 211

An administrator is configuring the severity level on the vManage NMS for events that indicate that an action must be taken immediately. Which severity level must be configured?

- A. warning
- B. error
- C. critical
- D. alert

Answer: D

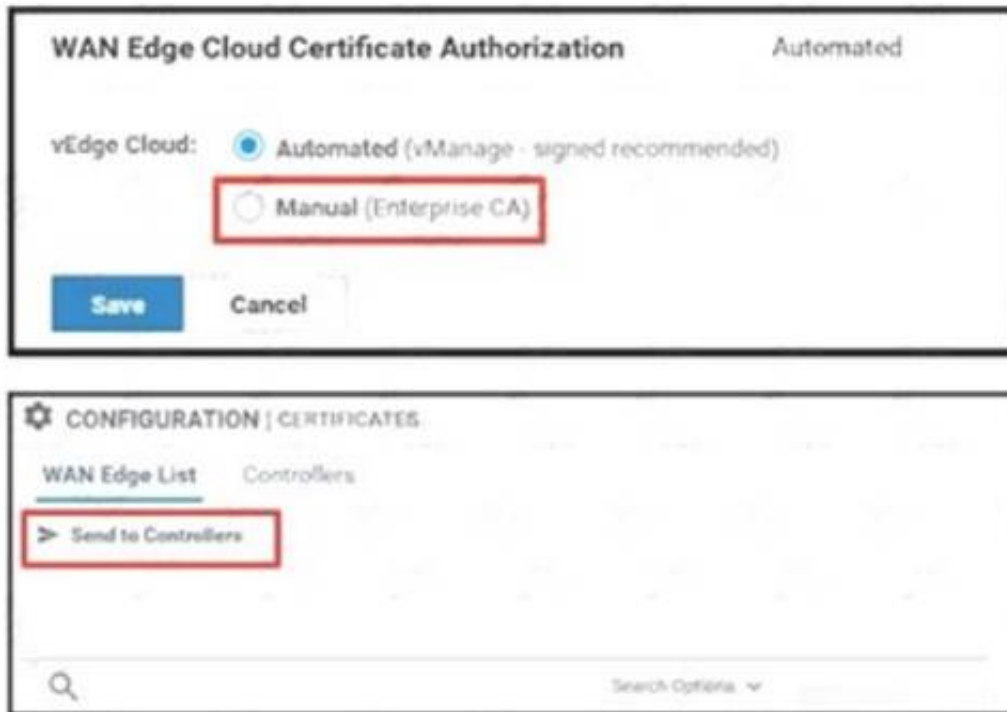
Explanation:

- **Alert**— Action must be **taken immediately** (corresponds to syslog severity 1).

NEW QUESTION 216

An administrator must deploy the controllers using the On-Prem method while vManage can access the PnP portal from inside How are the two WAN Edge authorized allowed lists to be made available to vManage? (Choose two)





- A. Option A
- B. Option B
- C. Option C
- D. Option D

Answer: AB

Explanation:

https://sdwan-docs.cisco.com/Product_Documentation/vManage_Help/Release_18.4/Configuration/Devices

NEW QUESTION 217

What is the main purpose of using TLOC extensions in WAN Edge router configuration?

- A. creates hardware-level transport redundancy at the local site
- B. creates an IPsec tunnel from WAN Edge to vBond Orchestrator
- C. transports control traffic to a redundant vSmart Controller
- D. transports control traffic w remote-site WAN Edge routers

Answer: D

NEW QUESTION 222

Refer to the exhibit.

```
vEdge-Cloud#
vEdge-Cloud#
vEdge-Cloud# vshell
vEdge-Cloud:~$ cd /var/log/
vEdge-Cloud:/var/log$
vEdge-Cloud:/var/log$ ls -l
total 28992
-rw-r--r-- 1 root root 1441700 Nov 22 15:13 auth.log
-rw-r--r-- 1 basic adm 0 Aug 7 15:29 cloud-init.log
drwxr-xr-x 2 root root 4096 Nov 22 14:49 confd
-rw-r--r-- 1 root root 1896486 Nov 22 14:57 kern.log
-rw-r--r-- 1 root root 292292 Aug 9 22:31 lastlog
-rw-r--r-- 1 root root 6197843 Nov 22 15:14 messages
-rw-r--r-- 1 root root 10512141 Aug 30 21:00 messages.1
drwxr-xr-x 2 root root 4096 Nov 22 14:48 pdb
drwxr-xr-x 2 quagga quagga 4096 Aug 7 15:29 quagga
-rw-r--r-- 1 root root 437 Nov 22 14:48 sw_script_active.log
-rw-r--r-- 1 root root 382 Nov 22 14:48 sw_script_previous.log
-rw-r--r-- 1 root root 2004 Nov 22 14:49 sw_script_syncddb.log
-rw----- 1 root root 64064 Nov 22 15:07 tallylog
drwxr-xr-x 2 root root 60 Nov 22 14:48 tmplog
-rw-r--r-- 1 root root 6841506 Nov 22 15:14 vconfd
-rw-r--r-- 1 root root 184602 Aug 7 15:29 vdebug
-rw-r--r-- 1 root root 2479511 Nov 22 15:14 vsyslog
-rwxr-xr-x 1 root utmp 49536 Nov 22 15:07 wtmp
vEdge-Cloud:/var/log$
vEdge-Cloud:/var/log$
```

Which configuration stops Netconf CLI logging on WAN Edge devices during migration?

- ☐ logs
 - audit-disable
 - netconf-disable
- ☐ logs
 - netconf-disable
- ☐ logging
 - disk netconf-disable
- ☒ logging
 - disk
 - audit-disable
 - netconf-disable

- A. Option A
 B. Option B
 C. Option C
 D. Option D

Answer: B

Explanation:

<https://www.cisco.com/c/en/us/td/docs/routers/sdwan/command/sdwan-cr-book/config-cmd.html#wp386725031>

Syslog messages related to AAA authentication and Netconf CLI access and usage are placed in the auth.log and messages files. Each time Cisco vManage logs in to a Cisco vEdge device to retrieve statistics and status information and to push files to the router, the router generates AAA and Netconf log messages. So, over time, these messages can fill the log files. To prevent these messages from filling the log files, you can disable the logging of AAA and Netconf syslog messages:

```
Device(config)# system aaa logsViptela(config-logs)# audit-disableViptela(config-logs)# netconf-disable
```

NEW QUESTION 226

An enterprise is continuously adding new sites to its Cisco SD-WAN network. It must configure any cached routes flushed when OMP peers have lost adjacency. Which configuration allows the cached OMP routes to be flushed after every 24 hours from its routing table?

A)

B)

C)

Basic Configuration	Timers	Advertise
Graceful Restart for OMP	<input checked="" type="radio"/> On <input type="radio"/> Off	
Overlay AS Number	24	
Graceful Restart Timer (seconds)	600000	
Number of Paths Advertised per Prefix	2	
ECMP Limit	2	
Shutdown	<input type="radio"/> Yes <input checked="" type="radio"/> No	

D)

Basic Configuration	Timers	Advertise
Graceful Restart for OMP	<input checked="" type="radio"/> On <input type="radio"/> Off	
Overlay AS Number	24	
Graceful Restart Timer (seconds)	43200	
Number of Paths Advertised per Prefix	2	
ECMP Limit	2	
Shutdown	<input type="radio"/> Yes <input checked="" type="radio"/> No	

- A. Option A
- B. Option B
- C. Option C
- D. Option D

Answer: B

NEW QUESTION 227

Refer to the exhibit.

```
vEdge-2(config-vpn-0)#interface ge0/2.101
vEdge-2(config-interface)#ip address 10.1.100.0/24
vEdge-2(config-interface)#tloc-extension ge0/0
vEdge-2(config-interface)#mtu 1496
vEdge-2(config-interface)#no shutdown
```

What binding is created using the tloc-extension command?

- A. between ge 0/2.101 of port-type service and ge 0/0 of port-type service
- B. between ge 0/2.101 of port-type transport and ge 0/0 of port-type service
- C. between ge 0/2.101 of port-type service and ge 0/0 of port-type transport
- D. between ge 0/2.101 of port-type transport and ge 0/0 of port-type transport

Answer: D

Explanation:

tloc-extension

Bind this interface, which connects to another vEdge router at the same physical site, to the local router's WAN **transport interface** (on vEdge routers only).

NEW QUESTION 228

An enterprise needs DIA on some of its branches with a common location ID: A041:B70C: D78E::18 Which WAN Edge configuration meets the requirement?

A)

```
vpn 1
interface ge0/1
ip address 172.16.0.1/24
vpn 512
ip route 0.0.0.0/0 vpn 0
```

B)

```
vpn 1
ip route 0.0.0.0/0 vpn 1
interface ge0/0
ip address 172.16.0.1/24
nat
```

C)

```
vpn 0
interface ge0/0
ip address 172.16.0.1/24
nat
vpn 1
ip route 0.0.0.0/0 vpn 0
```

D)

```
vpn 0
ip route 0.0.0.0/0 vpn 0
vpn 1
interface ge0/1
ip address 172.16.0.1/24
nat
```

A. Option A

B. Option B

C. Option C

D. Option D

Answer: C

NEW QUESTION 231

An enterprise has several sites with multiple VPNs that are isolated from each other A new requirement came where users in VPN 73 must be able to talk to users in VPN 50 Which configuration meets this requirement?

☐ policy
control-policy Route_Leaking
sequence 1
match route
vpn-list VPN_73
prefix-list _AnyIpv4PrefixList
action accept
export-to vpn-list VPN_50
sequence 11
match route
vpn-list VPN_50
prefix-list _AnyIpv4PrefixList
action accept
export-to vpn-list VPN_73
default-action accept

☐ policy
control-policy Route_Leaking
sequence 1
match route
VPN_73
prefix-list _AnyIpv4PrefixList
export-to VPN_50
sequence 11
match route
VPN_50
prefix-list _AnyIpv4PrefixList
export-to VPN_73
default-action accept

☐ policy
control-policy Route_Leaking
sequence 1
match route
VPN_ALL
prefix-list _AnyIpv4PrefixList
action accept
export-to VPN_ALL

☐ policy
control-policy Route_Leaking
sequence 1
match route
VPN_50 VPN_73
prefix-list _AnyIpv4PrefixList
action accept
export-to VPN_73 VPN_50

A. Option A

B. Option B

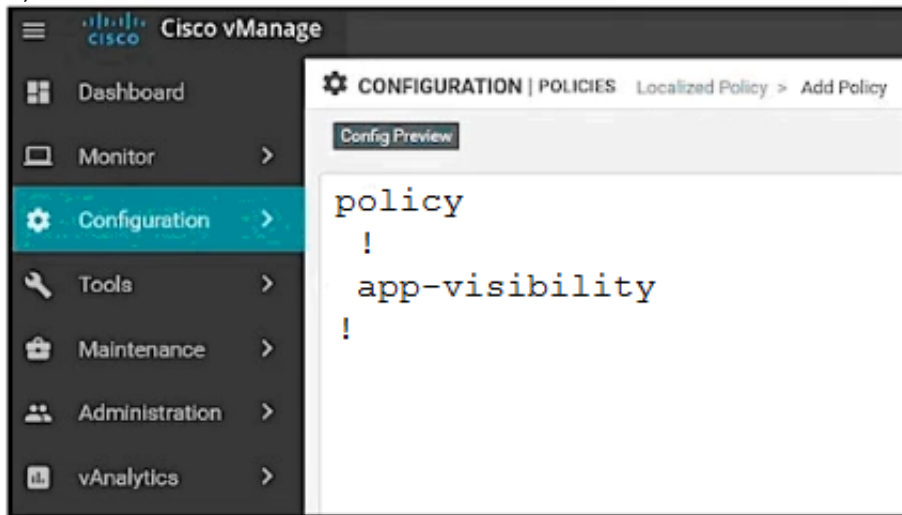
- C. Option C
- D. Option D

Answer: A

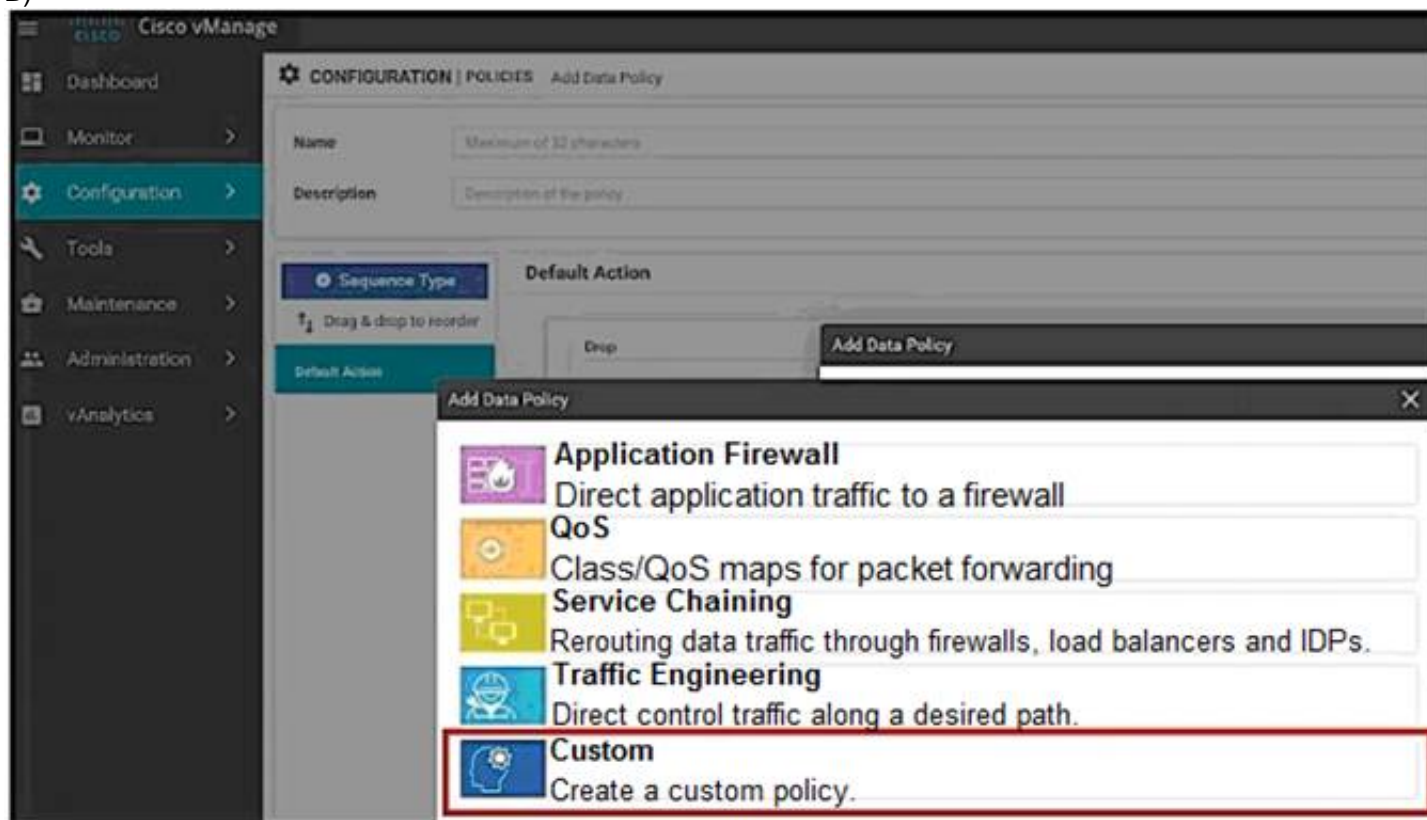
NEW QUESTION 236

An organization wants to discover, monitor, and track the applications running on the WAN Edge device on the LAN Which configuration achieves this goal?

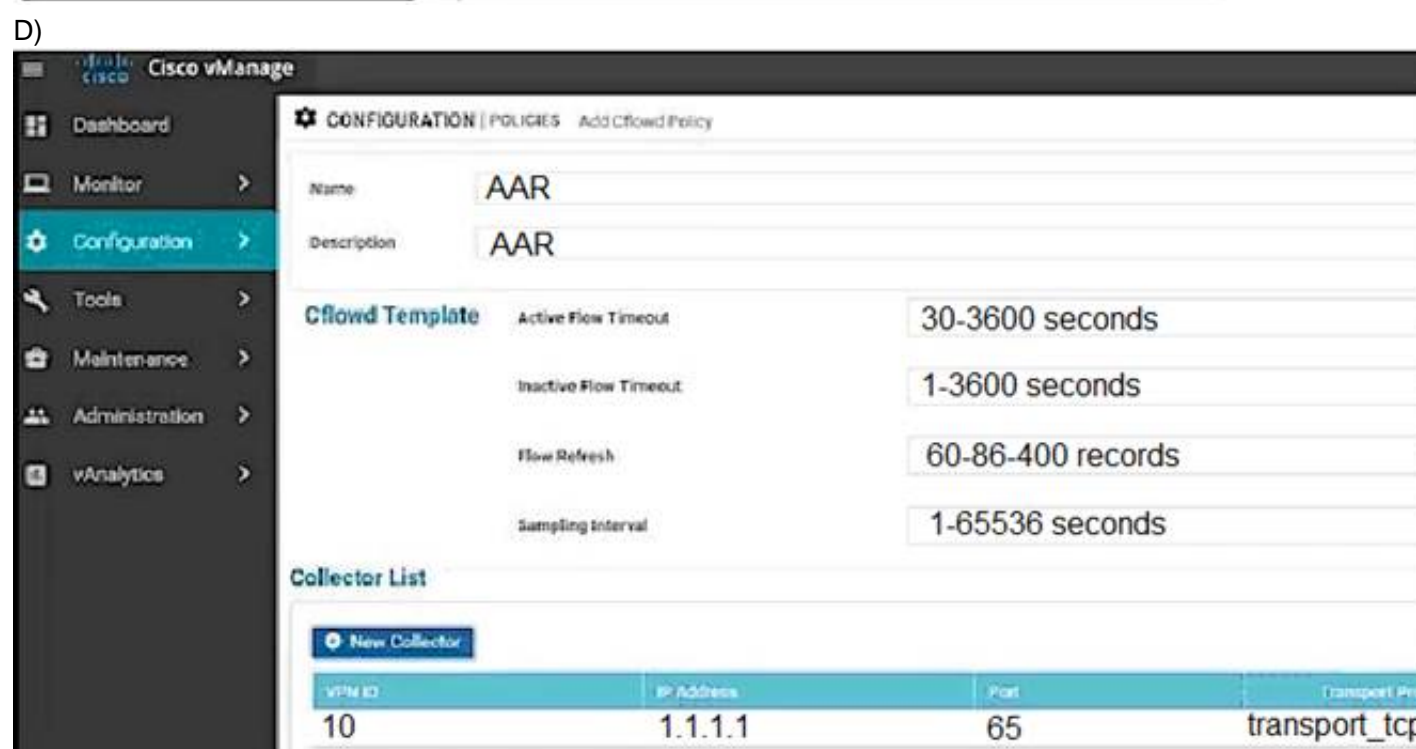
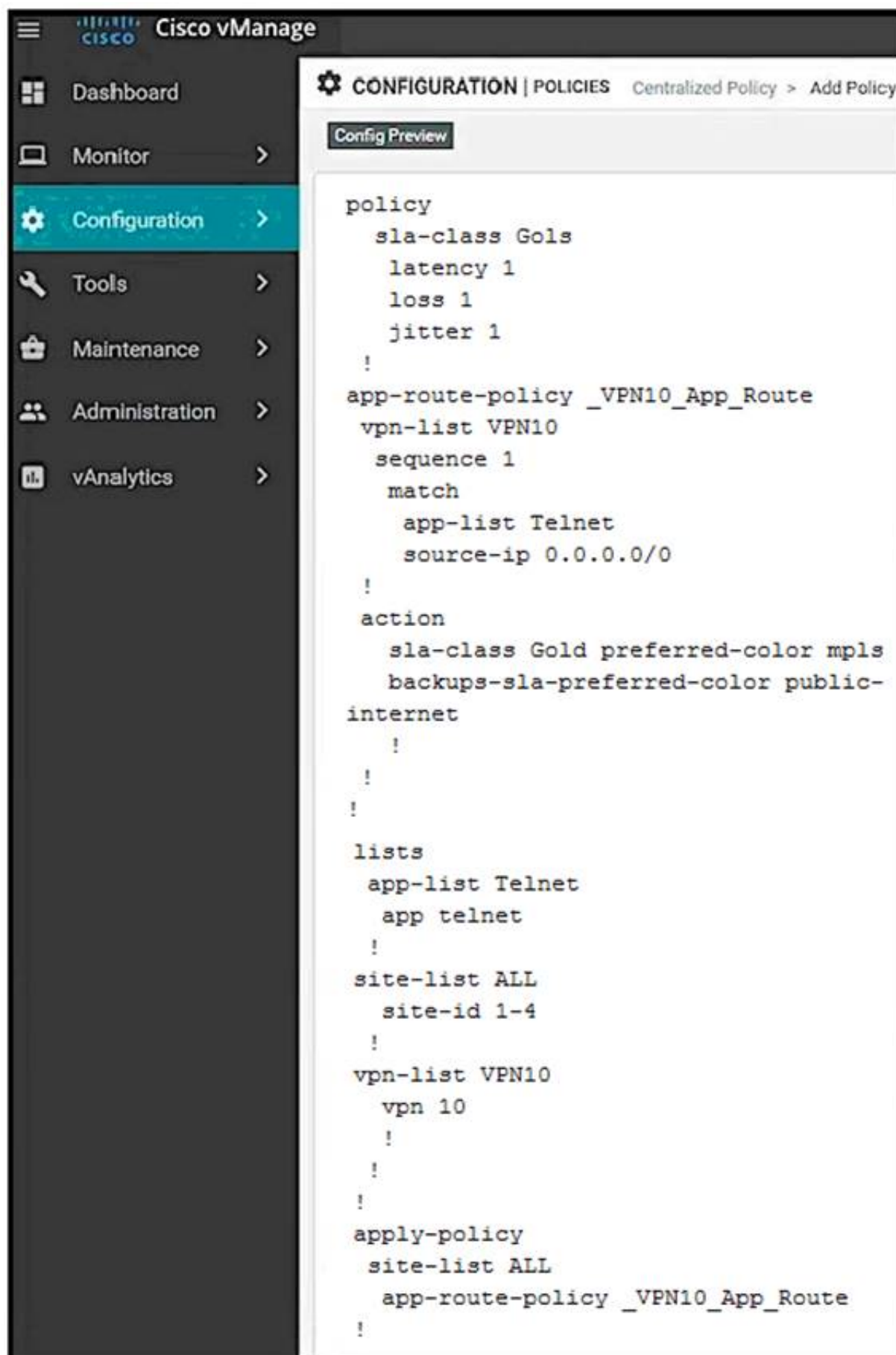
A)



B)



C)



- A. Option A
- B. Option B
- C. Option C
- D. Option D

Answer: D

NEW QUESTION 237

Which controller is used for provisioning and configuration in a Cisco SD-WAN solution?

- A. vBond
- B. Manage
- C. WAN Edge router
- D. vSmart

Answer: B

NEW QUESTION 239

Which type of connection is created between a host VNet and a transit VNet when configuring Cloud OnRamp for IaaS?

- A. Azure private endpoint
- B. GRE tunnel
- C. IPsec tunnel
- D. Azure peer link

Answer: C

NEW QUESTION 244

Refer to the exhibit

```
vpn 1
service netsvc1 interface ipsec1

from-vsmart data-policy _1_ServiceIsertionIPSec
direction from-service
vpn-list 1
sequence 1
match
destination-ip 1.1.1.1/32
action accept
set
service netsvc1
default-action accept
from-vsmart lists vpn-list 1
vpn 1
```

Which command allows traffic through the IPsec tunnel configured in VPN 0?

- A. service local
- B. service FW address 1.1.1.1
- C. service netsvc1 vpn 1
- D. service netsvc1 address 1.1.1.1

Answer: B

Explanation:

<https://www.cisco.com/c/en/us/td/docs/routers/sdwan/configuration/policies/vedge-20-x/policies-book/service-c>

NEW QUESTION 246

An administrator must configure an ACL for traffic coming in from the service-side VPN on a specific WAN device with circuit ID 391897770. Which policy must be used to configure this ACL?

- A. local data policy
- B. central data policy
- C. app-aware policy
- D. central control policy

Answer: A

Explanation:

<https://www.cisco.com/c/en/us/td/docs/routers/sdwan/configuration/policies/vedge/policies-book/Policy-basics.h>

NEW QUESTION 250

An engineer wants to track tunnel characteristics within an SLA-based policy for convergence. Which policy configuration will achieve this goal?

- A. App-route policy
- B. VPN membership policy
- C. Control policy
- D. Data policy

Answer: A

Explanation:

An application-aware routing policy matches applications with an SLA, that is, with the data plane tunnel performance characteristics that are necessary to transmit the applications' data traffic. The primary purpose of application-aware routing policy is to optimize the path for data traffic being transmitted by Cisco SD-WAN devices.

NEW QUESTION 252

Which protocol is used to propagate multicast join requests over the Cisco SD-WAN fabric?

- A. ARP
- B. Auto-RP
- C. OMP
- D. IGMP

Answer: D

NEW QUESTION 255

A network administrator is creating an OMP feature template from the vManage GUI to be applied to WAN edge routers. Which configuration attribute will avoid the redistribution of the routes back into the OMP from the LAN side?

- A. configure "Number of Paths Advertised per Prefix"
- B. configure "Overlay AS Number"
- C. configure "Send Backup Paths"
- D. configure "ECMP limit"

Answer: B

Explanation:

If you configure the same overlay AS number on multiple vEdge routers in the overlay network, all these routers are considered to be part of the same AS, and as a result, they do not forward any routes that contain the overlay AS number. This mechanism is an additional technique for preventing BGP routing loops in the network.

NEW QUESTION 256

Drag and drop the components from the left onto the corresponding Cisco NFV infrastructure Building Blocks on the right. Not all options are used.



- A. Mastered
- B. Not Mastered

Answer: A

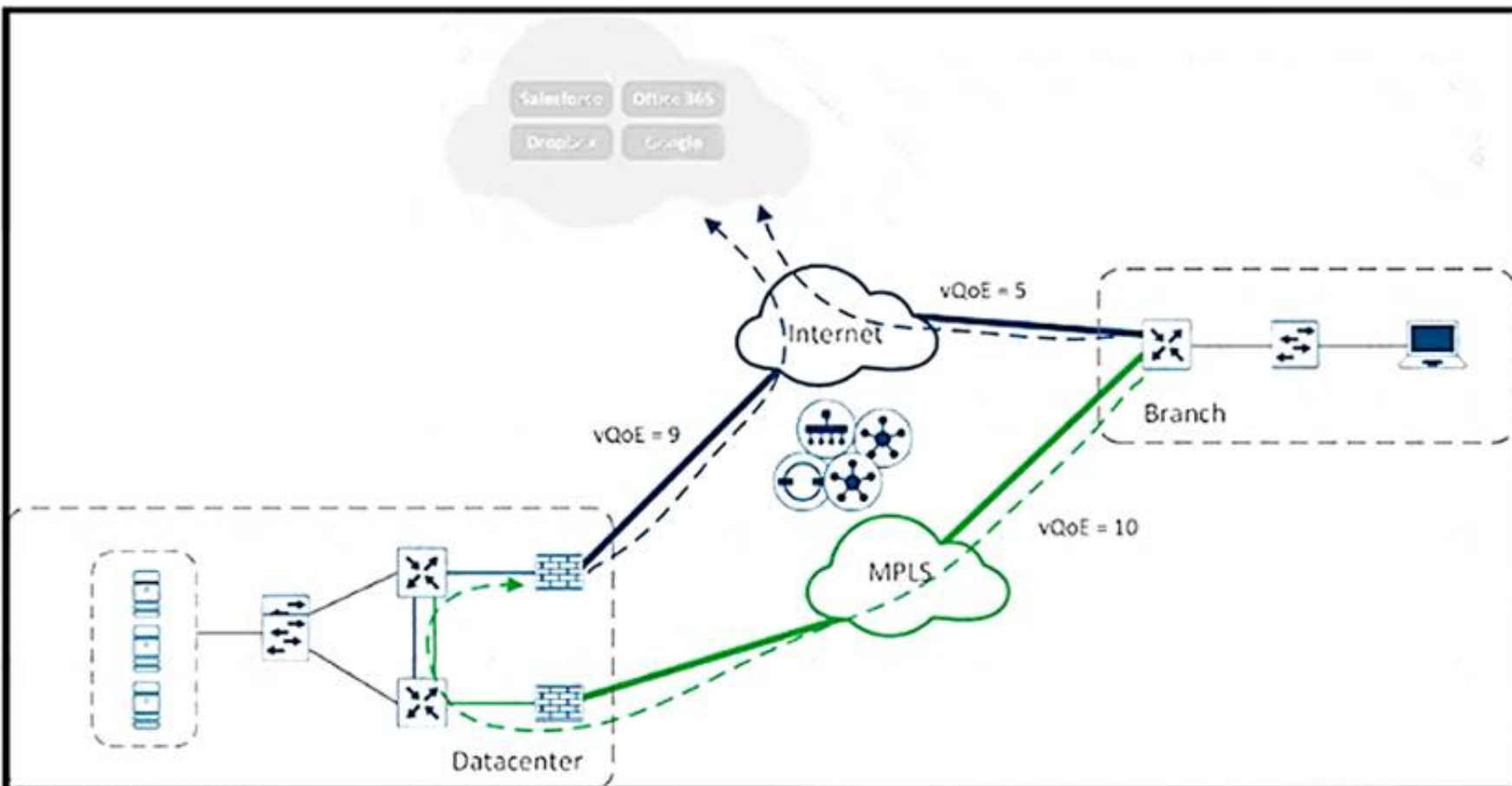
Explanation:

Cisco NFV Infrastructure Building Blocks

- **Compute:** Cisco Unified Computing System™ (Cisco UCS®) for a carrier class and reliable compute infrastructure.
- **Storage:** Cisco UCS hardware and CEPH provide reliable storage. The user has the options to introduce additional storage as capacity needs grow.
- **Networking:** Cisco Nexus® 9000 series hardware provides high throughput, low latency, and rich feature sets.
- **Virtualized Infrastructure:** Fully integrated Red Hat Enterprise Linux and Red Hat OpenStack Platform runs on top of Cisco Unified Computing System™ (Cisco UCS®). It is open source yet hardened and mature.
- **Management:** Cisco UCS Director functions as a unified management tool across multiple virtual environments. SDN controller is optional.

NEW QUESTION 257

Refer to the exhibit.



A user in the branch is connecting to Office 365 for the first time. Over which path does the branch WAN Edge router traffic follow?

- A. routing table of the branch WAN Edge router
- B. DIA exit of the branch WAN Edge router
- C. forwarded to the gateway site
- D. dropped because the minimum vQoE score has not been met

Answer: B

NEW QUESTION 261

What is a benefit of using REST APIs?

- A. predefined automation and orchestration platform for event management and logging
- B. user-defined automation and integration into other orchestration systems or tools
- C. vAnalytics to simplify operational services integration and real-time event monitoring
- D. predefined SD-WAN controller with other platform integration for event management and logging

Answer: B

NEW QUESTION 262

Which two REST API functions are performed for Cisco devices in an overlay network? (Choose two)

- A. distributing a Snort image among devices
- B. attaching a device configuration template
- C. managing connections for smart licensing
- D. monitoring device certificates
- E. querying a device and aggregating statistics

Answer: BD

NEW QUESTION 267

For data plane resiliency, what does the Cisco SD-WAN software implement?

- A. BFD
- B. establishing affinity between vSmart controllers and WAN Edge routers
- C. multiple vBond orchestrators
- D. OMP

Answer: A

Explanation:

NEW QUESTION 271

WAN Edge routers are configured manually to use UDP port offset to use nondefault offset values when IPsec tunnels are created. What is the offse range?

- A. 1-19
- B. 0-18
- C. 0-19
- D. 1-18

Answer: C

NEW QUESTION 272

Which two performance data details are provided by Cisco SO-WAN vAnalytics? (Choose two)

- A. jitter loss and latency for data tunnels
- B. application quality of experience score from zero to ten
- C. detail on total cost of ownership for the fabric
- D. certificate authority status (health and expiration dates) for all controllers
- E. view devices connected to a vManage NMS

Answer: AB

NEW QUESTION 276

Drag and drop the vManage policy configuration procedures from the left onto the correct definitions on the right.

Create groups of interest	Create the network structure to which the policy applies
Configure traffic rules	Create lists that group together related items that an engineer can call in the match or action components of a policy
Configure topology	Associate a policy with sites and VPNs in the overlay network
Apply policies to sites and VPNs	Create the match and action conditions of a policy

- A. Mastered
- B. Not Mastered

Answer: A

Explanation:

Configure topology

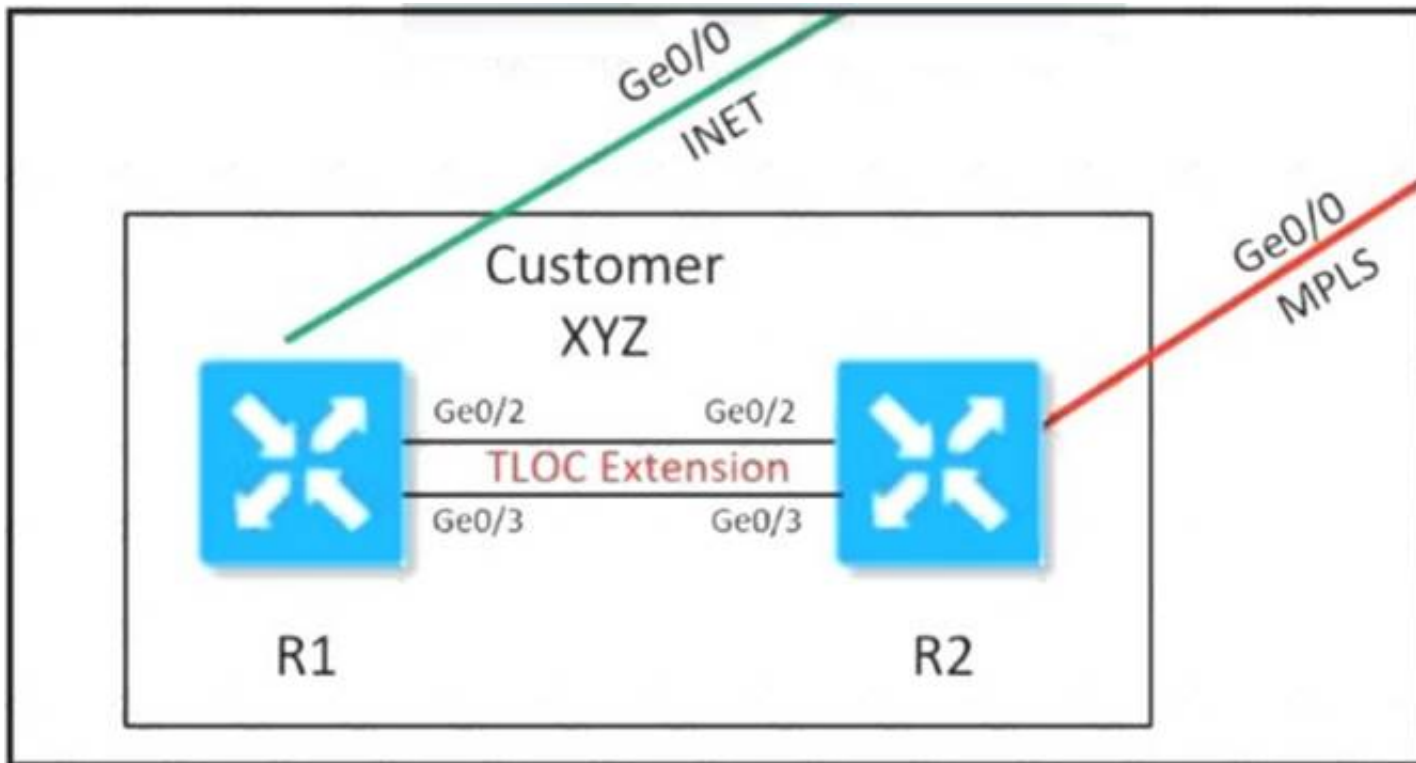
Create groups of interest

Apply policies to sites and VPNs

Configure traffic rules

NEW QUESTION 277

Refer to the exhibit.



Customer XYZ cannot provision dual connectivity on both of its routers due to budget constraints but wants to use both R1 and R2 interlaces for users behind them for load balancing toward the hub site. Which configuration achieves this objective?

A.
R1
 interface ge0/2
 ip address 43.43.43.2/30
 tloc-extension ge0/0

 interface ge0/3
 ip address 34.34.34.1/30
 tunnel-interface
 color mpls

R2
 interface ge0/2
 ip address 43.43.43.1/30
 tunnel-interface
 color public-internet

 interface ge0/3
 ip address 34.34.34.2/30
 tloc-extension ge0/0

B.
R1
 interface ge0/2
 ip address 43.43.43.2/30
 tloc-extension ge0/0

 interface ge0/3
 ip address 34.34.34.2/30
 tloc-extension ge0/0

R2
 interface ge0/2
 ip address 43.43.43.1/30
 tunnel-interface
 color public-internet

 interface ge0/3
 ip address 34.34.34.1/30

C.
R1
 interface ge0/2
 ip address 43.43.43.2/30
 tloc-extension ge0/0

 interface ge0/3
 ip address 34.34.34.2/30
 tloc-extension ge0/0

R2
 interface ge0/2
 ip address 43.43.43.1/30

 interface ge0/3
 ip address 34.34.34.1/30

D.
R1
 interface ge0/2
 ip address 43.43.43.2/30
 tloc-extension ge0/0

 interface ge0/3
 ip address 34.34.34.1/30
 tunnel-interface
 color mpls

R2
 interface ge0/2
 ip address 43.43.43.1/30
 tunnel-interface
 color public-internet

 interface ge0/3
 ip address 34.34.34.2/30
 tloc-extension ge0/2

- A. Option A
- B. Option B
- C. Option C
- D. Option D

Answer: A

NEW QUESTION 279

Which two prerequisites must be met before the Cloud onRamp for IaaS is initiated on vManage to expand to the AWS cloud? (Choose two)

- A. Attach the *AmazonCreateVPC* and "Amazon Provision EC2" permission policy to the IAM account
- B. Subscribe to the SD-WAN Edge router AMI in the AWS account
- C. Attach an OSPF feature template to the AWS cloud Edge router template
- D. Attach a device template to the cloud WAN Edge router to be deployed in the AWS
- E. Preprovision the transit VPC in the AWS region

Answer: BD

Explanation:

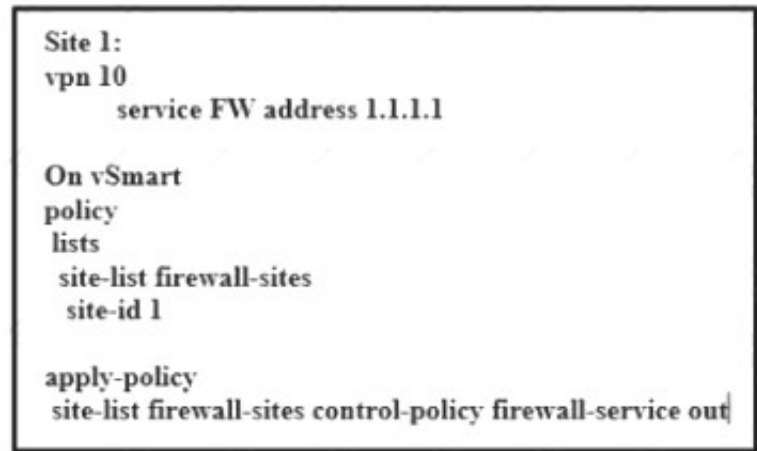
The pre-requisites include verifying you meet the AWS prerequisites, including the necessary AWS credentials and subscriptions to the Amazon Machine Image (AMI) instances for Cisco SD-WAN Edge routers (Cisco CSR 1000v virtual routers or Cisco vEdge Cloud); verifying you have available tokens/licenses for at least two additional Cisco SD-WAN Edge Routers within Cisco vManage; and configuring and deploying device templates for the Cisco SD-WAN Edge routers that will be used within the transit VPCs.

Note that the creation of the customer host VPCs, shown in the figure above, is outside the scope of this document. It is assumed that one or more customer host VPCs have already been created.

https://www.cisco.com/c/en/us/td/docs/solutions/CVD/SDWAN/Cisco_Cloud_onRamp_for_IaaS_AWS_Versio

NEW QUESTION 281

Refer to the exhibit,



Which configuration routes Site 2 through the firewall in Site 1?

control-policy firewall-service
sequence 10
match route
site-id 2
action accept
set service local
default-action accept

On vSmart
control-policy firewall-service
sequence 10
match route
site-id 2
action accept
set
service FW vpn 10
default-action accept

On vSmart
control-policy firewall-service
sequence 10
match route
site-id 2
action accept
set
service FW vpn 10
service local
default-action accept

On vSmart
control-policy firewall-service
sequence 10
match route
site-id 2
action accept
set service FW vpn 10
default-action accept

- A. Option A
- B. Option B
- C. Option C
- D. Option D

Answer: D

Explanation:

<https://www.cisco.com/c/en/us/td/docs/routers/sdwan/configuration/policies/vedge-20-x/policies-book/service-c>

Here is the configuration procedure:

1. On the hub router, provision the firewall service, specifying the IP address of the firewall device. With this configuration, OMP on the hub router advertises one service route to the Cisco vSmart Controller. The service route contains a number of properties that identify the location of the firewall, including the TLOC of the hub router and a service label of svc-id-1, which identifies the service type as a firewall. (As mentioned above, before advertising the route, the device ensures that the firewall's IP address can be resolved locally.)

```
vpn 10
service FW address 1.1.1.1
```

2. On the Cisco vSmart Controller, configure a control policy that redirects data traffic traveling from Site 1 to Site 2 through the firewall. Then, also on the Cisco vSmart Controller, apply this policy to Site 1.

```
policy
lists
site-list firewall-sites
site-id 1
control-policy firewall-service
sequence 10
match route
site-id 2
action accept
set service FW vpn 10
default-action accept
apply-policy
site-list firewall-sites control-policy firewall-service out
```

NEW QUESTION 284


What is the result during a WAN Edge software upgrade process if the version of the WAN Edge software is higher than the one running on a controller device?

- A. The upgrade button is greyed out
- B. The upgrade proceeds with no warning message.
- C. The upgrade fails with a warning message
- D. The upgrade proceeds with a warning message

Answer: D

NEW QUESTION 286

Refer to the exhibit.

Hostname	State	System IP	Reachability	Site ID	Device Model	BFD	Control
 BR1-VEDGE1		10.3.0.1	reachable	300	vEdge Cloud	8	5

What does the BFD value of 8 represent?

- A. number of BFD sessions
- B. hello timer of BFD session
- C. poll-interval of BFD session.
- D. dead timer of BFD session

Answer: A

NEW QUESTION 291

Which protocol is configured on tunnels by default to detect loss, latency, jitter, and path failures in Cisco SD-WAN?

- A. TLS
- B. BFD
- C. OMP
- D. BGP

Answer: B

NEW QUESTION 295

An engineer is configuring a list that matches all IP prefixes with lengths from /1 to /16 in a centralized control policy. Which list accomplishes this task?

- A. 0.0.0.0/1 le 16
- B. 0.0.0.0/0 ge 1
- C. 0.0.0.0/0 le 16
- D. 0.0.0.0/16 ge 1

Answer: A

NEW QUESTION 299

Refer to the exhibit.

vManage system system-ip 10.11.11.1 host-name vManage site-id 1 clock timezone Europe/London vbond 11.1.1.3 organization-name Cisco.com Vpn 0 Interface eth1 Ip address 11.1.1.1/24 No shut Tunnel-interface Allow-service all Ip route 0.0.0.0/0 11.1.1.254	vSmart system system-ip 10.11.11.1 host-name vSmart site-id 1 clock timezone Europe/Rome vbond 11.1.1.3 organization-name Cisco.com Vpn 0 Interface eth1 Ip address 11.1.1.2/24 No shut Tunnel-interface Allow-service all Ip route 0.0.0.0/0 11.1.1.254
vBond system system-ip 10.11.11.3 host-name vManage site-id 1 clock timezone Europe/London vbond 11.1.1.1 local organization-name Cisco.com Vpn 0 Interface ge0/0 Ip address 11.1.1.3/28 No shut Tunnel-interface Encapsulation ipsec Allow-service all Ip route 0.0.0.0/0 11.1.1.254	

vManage and vSmart have an issue establishing a connection to vBond. Which configuration resolves the issue?

- A. Configure the tunnel interface on all three controllers with a color of transport.
- B. Change the timezone on the vSmart to Europe/London.
- C. Configure the (11.1.1.X/24) IP addresses on the elhO interfaces on vManage and vSmart.
- D. Reconfigure the system-ip parameter on vSmart to 11.1.1.2.

Answer: B

NEW QUESTION 304

Which secure tunnel type should be used to connect one WAN Edge router to other WAN Edge routers?

- A. TLS
- B. DTLS
- C. SSL VPN
- D. IPsec

Answer: D

NEW QUESTION 307

In which VPN is the NAT operation on an outgoing interface configured for direct Internet access?

- A. 1
- B. 10
- C. 512

Answer: D

NEW QUESTION 309

What are the two functions of vSmart? (Choose two)

- A. It orchestrates connectivity between WAN Edge routers using policies to create network topology
- B. It ensures that valid WAN Edge routers can build the control plane connectivity
- C. It uses TLOCs to uniquely identify the circuit interface to control plane and data plane information
- D. It validates that the WAN Edge trying to join the overlay is authorized to join.
- E. It builds control plane connections with WAN Edge routers using ILS or ULS

Answer: DE

NEW QUESTION 311

An engineer must deploy a QoS policy with these requirements:

- policy name: App-police
- police rate: 1000000
- burst: 1000000
- exceed: drop

Which configuration meets the requirements?

- A.

```
vpn-list VPN10
sequence 1
match
  app-list youtube
action accept
set
  policer App-police
```
- B.

```
policy
data-policy policy-name
vpn-list 10
sequence 1
action accept
set
  policer App-police
```
- C.

```
vpn 10
interface ge0/0/0
set
  policer App-police in
default action accept
```
- D.

```
policy
action accept
set
  policer App-police
```

- A. Option A
- B. Option B
- C. Option C
- D. Option D

Answer: B

NEW QUESTION 315

An engineer configures policing with a rate of 125 Bps and a burst rate of 8000 bits, as shown here:


```
policy
policer p1
rate
burst
exceed drop
!
access-list acl1
sequence 1
match
source-ip 2.2.0.0/16
destination-ip 10.1.1.0/24 100.1.1.0/24
destination-port 20 30
protocol 6 17 23
!
action accept
policer p1
!
default-action drop
!
vpn 1
interface ge0/4
description Policy ID: B413:A88D:76G7::4
ip address 10.20.24.15/24
no shutdown
access-list acl1 out
!
```

Which configuration completes this task?

- A. Configure 125 for rate and 1000 for burst.
- B. Configure 1000 for rate and 64000 for burst
- C. Configure 125 for rate and 8000 for burst
- D. Configure 1000 for rate and 1000 for burst

Answer: D

NEW QUESTION 318

Which type of certificate is installed on vManage for a user to access vManage via a web browser?

- A. SD-AVC Certificate
- B. WAN Edge Certificate
- C. Controller Certificate
- D. Web Server Certificate

Answer: D

NEW QUESTION 319

Which actions must be taken to allow certain departments to require firewall protection when interacting with data center network without including other departments? (Choose two.)

- A. Use classification policing and marking
- B. Apply data policies at vEdge.
- C. Deploy a service-chained firewall service per VPN
- D. The regional hub advertises the availability of the firewall service
- E. Advertise lo vSmart controllers

Answer: CD

NEW QUESTION 322

Refer to the exhibit.

Update Device Template

Variable List (Hover over each field for more information)

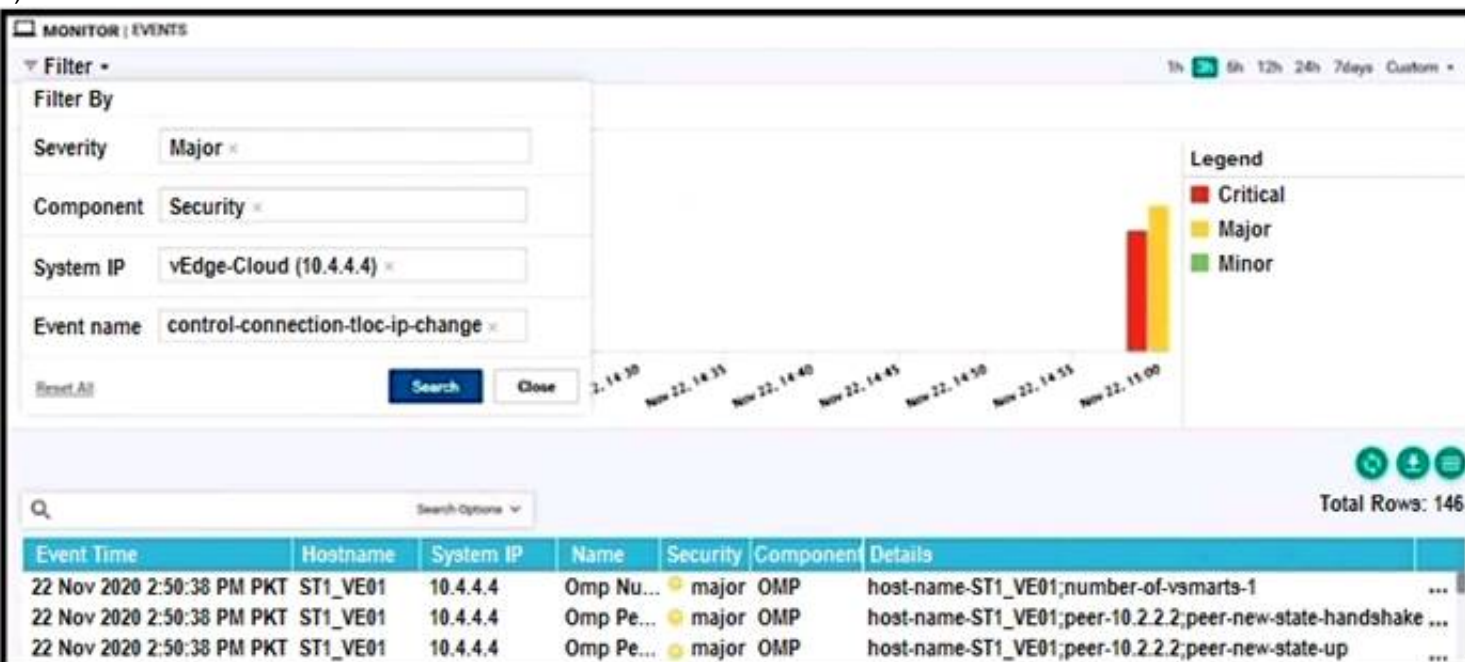
System IP	10.4.4.4
Hostname	ST1_VE01
Prefix(vEdge_Default_Gateway)	0.0.0.0/0
Prefix(Mpls_Default_Gateway)	0.0.0.0/0
Address(vEdge_Next_Hop_IP)	10.50.0.102
Address(MPLS_Next_hop_ip)	10.20.0.102
Hostname(Device_host_name)	vEdge-Cloud
Location(Device_location)	US
Latitude(Device_latitude)	40.7128
Longitude(Device_longitude)	74.0060
System IP(Device_system_ip)	10.4.4.4
Site ID(Device_site_id)	1

vManage logs are available for the past few months. A device name change deployed mistakenly at a critical site. How is the device name change tracked by operation and design teams?

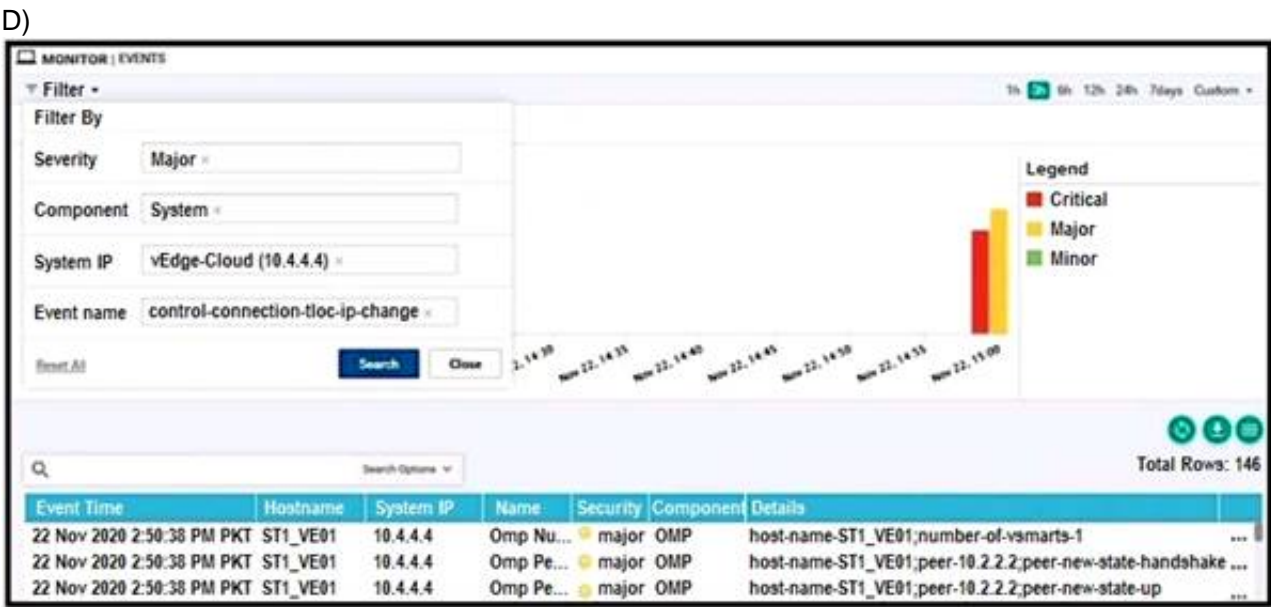
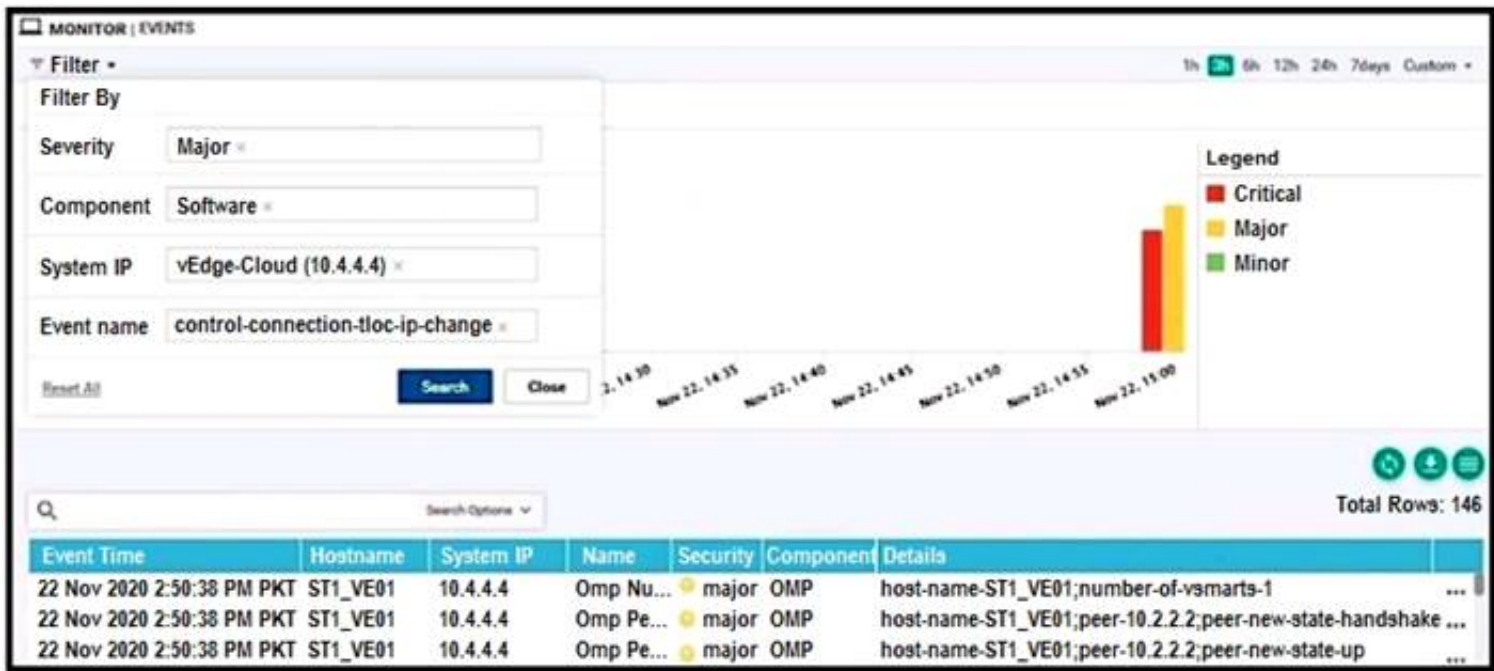
A)



B)



C)



- A. Option A
- B. Option B
- C. Option C
- D. Option D

Answer: D

NEW QUESTION 327

Drag and drop the BFD parameters from the left onto the BFD configurations on the right.

poll interval

color

hello interval

PMTU discovery

multiplier

BFD for Transport Tunnel

BFD for Application-Aware Routing

- A. Mastered
- B. Not Mastered

Answer: A

Explanation:

https://sdwandocs.cisco.com/Product_Documentation/vManage_Help/Release_18.2/Configuration/Templates/B

NEW QUESTION 331

Refer to the exhibit.

The screenshot shows the Cisco vManage interface for configuring a BGP feature template. The 'Basic Configuration' tab is selected. The configuration options are as follows:

Configuration Option	Value
Shutdown	<input checked="" type="radio"/> No
AS Number	65590
Router ID	192.168.1.1
Propagate AS Path	<input checked="" type="radio"/> On
Internal Routes Distance	<input type="text" value=""/>
Local Routes Distance	<input type="text" value=""/>
External Routes Distance	<input type="text" value=""/>

Buttons: Save, Cancel

Which configuration value is used to change the administrative distance of iBGP routes to 20?

- A. Configure internal Routes Distance to 20
- B. Configure Propagate AS Path to off
- C. Configure Local Distance to 20
- D. Configure External routes distance 20

Answer: C

NEW QUESTION 334

An engineer creates this data policy for DIA for VPN 10:

```
data-policy DIA
vpn-list VPN-10
sequence 10
match
destination-data-prefix-list INTERNAL-NETWORKS
!
action accept
```

Which policy sequence enables DIA for external networks?

- ☐ sequence 5
match
source-ip 0.0.0.0/0
!
action accept
nat use-vpn 0
- ☐ sequence 5
match
destination-ip 0.0.0.0/0
!
action reject
!
default-action accept
- ☐ sequence 20
match
destination-ip 0.0.0.0/0
!
action accept
nat use-vpn 0
- ☐ sequence 20
match
source-ip 0.0.0.0/0
!
action reject
!
default-action accept

- A. Option A
B. Option B
C. Option C
D. Option D

Answer: C

NEW QUESTION 339

Drag and drop the steps from the left into the sequence on the right for a WAN Edge router after powering on for zero touch provisioning.

Router contacts a DNS service.	1
Router establishes a connection to vBond.	2
Router contacts a DHCP server.	3
Router connects to the ZTP server.	4

- A. Mastered
B. Not Mastered

Answer: A

Explanation:

Router contacts a DNS service.	Router contacts a DHCP server.
Router establishes a connection to vBond.	Router contacts a DNS service.
Router contacts a DHCP server.	Router connects to the ZTP server.
Router connects to the ZTP server.	Router establishes a connection to vBond.

NEW QUESTION 343

In a customer retail network with multiple data centers, what does the network administrator use to create a regional hub topology?

- A. control policy on vManage
- B. control policy on vSmart
- C. data policy on vSmart
- D. app route policy on vSmart

Answer: A

NEW QUESTION 347

How is the software managed in Cisco SD-WAN?

- A. Software upgrade operation in the group must include vManag
- B. vBon
- C. and vSmart.
- D. Software downgrades are unsupported for vManage
- E. Software images must be uploaded to vManage through HTTP or FTP.
- F. Software images must be transferred through VPN 512 or VPN 0 of vManage.

Answer: A

NEW QUESTION 349

An administrator needs to configure SD-WAN to divert traffic from the company's private network to an ISP network. What action should be taken to accomplish this goal?

- A. configure the control policy
- B. configure the data policy
- C. configure the data security policy
- D. configure the application aware policy

Answer: B

Explanation:

Data policy influences the flow of data traffic traversing the network

NEW QUESTION 351

Which component of the Cisco SD-WAN architecture oversees the control plane of overlay network to establish, adjust, and maintain the connections between the WAN Edge devices that form the Cisco SD-WAN fabric?

- A. APIC-EM
- B. vManage
- C. vSmart
- D. vBond

Answer: C

Explanation:

Cisco vSmart Controller

The Cisco vSmart Controller oversees the control plane of the Cisco SD-WAN overlay network, establishing, adjusting, and maintaining the connections that form the Cisco SD-WAN fabric.

NEW QUESTION 356

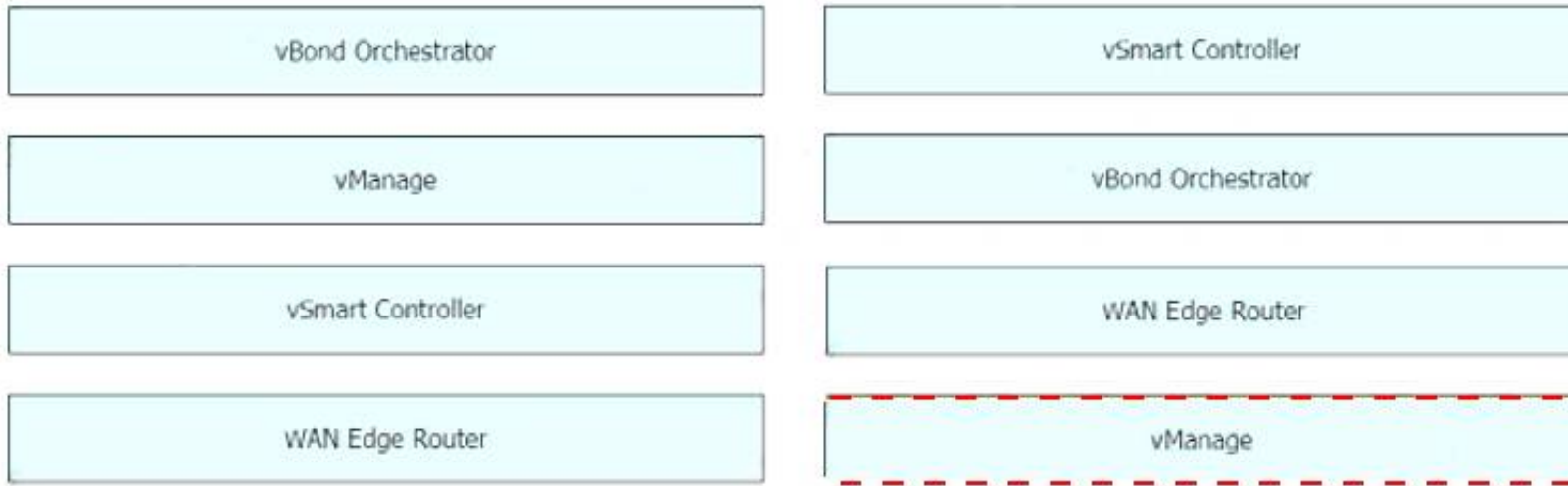
Drag and drop the Cisco SD-WAN components from the left onto their functions on the right.

vBond Orchestrator	IPsec key reflection and rekeying
vManage	first point of authentication
vSmart Controller	passes data plane traffic
WAN Edge Router	used to build configuration and policies

- A. Mastered
- B. Not Mastered

Answer: A

Explanation:



NEW QUESTION 359

A large retail organization decided to move some of the branch applications to the AWS cloud. How does the network architect extend the in-house Cisco SD-WAN branch to cloud network into AWS?

- A. Create virtual WAN Edge devices Cloud through the AWS online software store
- B. Create virtual instances of vSmart Cloud through the AWS online software store
- C. Create GRE tunnels to AWS from each branch over the Internet
- D. Install the AWS Cloud Router in the main data center and provide the connectivity from each branch

Answer: A

Explanation:

https://www.cisco.com/c/en/us/td/docs/solutions/CVD/SDWAN/Cisco_Cloud_onRamp_for_IaaS_AWS_Versio

NEW QUESTION 364

Which routes are similar to the IP route advertisements when the routing information of WAN Edge routers is learned from the local site and local routing protocols?

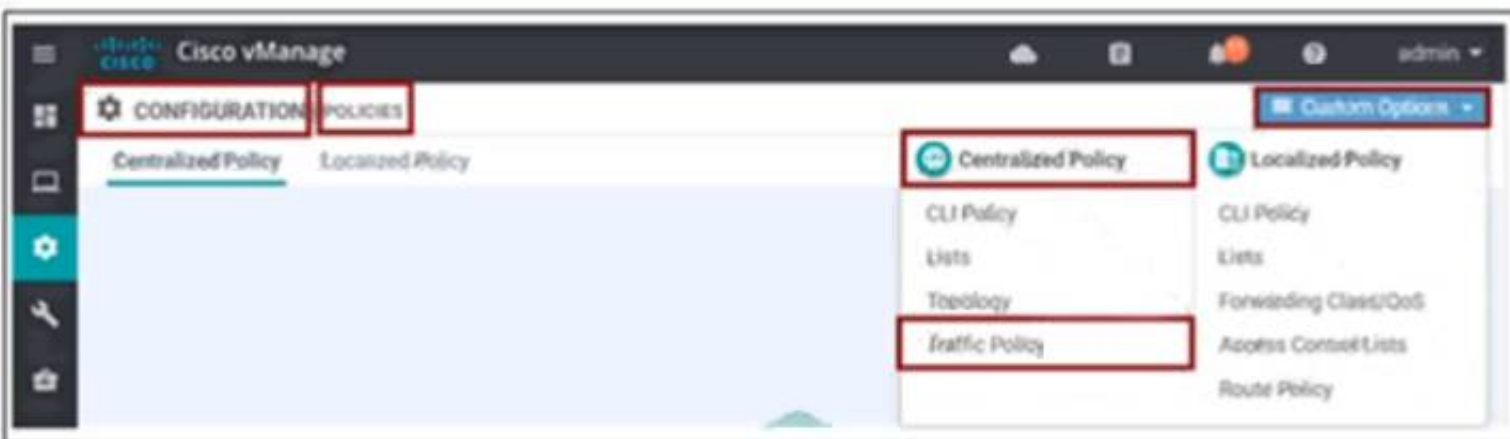
- A. service
- B. BGP
- C. TLOC
- D. OMP

Answer: D

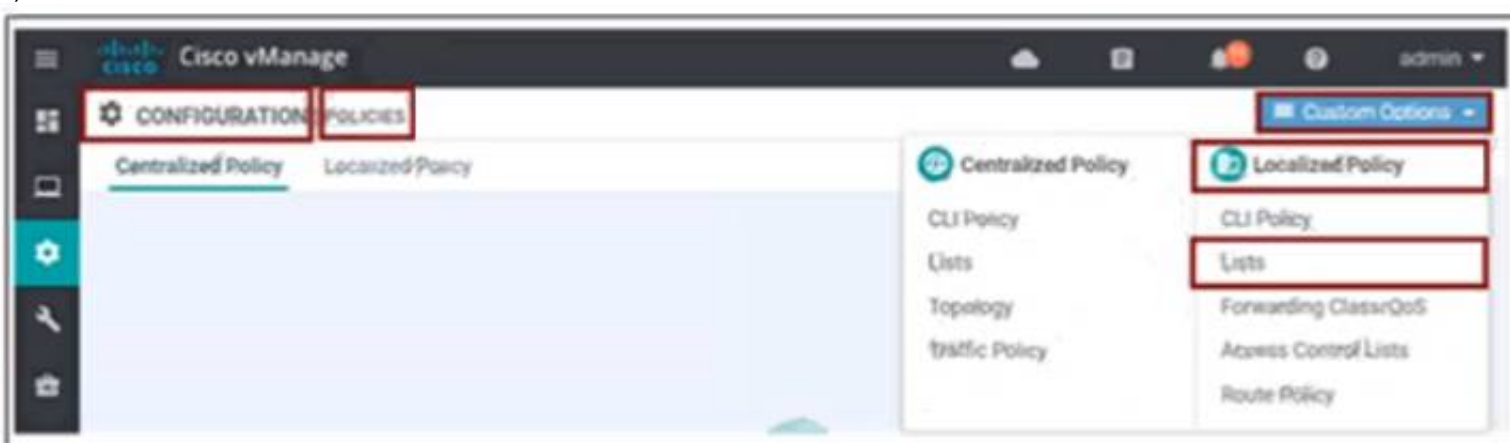
NEW QUESTION 365

An engineer must create a QoS policy by creating a class map and assigning it to the LLQ queue on a WAN Edge router Which configuration accomplishes the task?

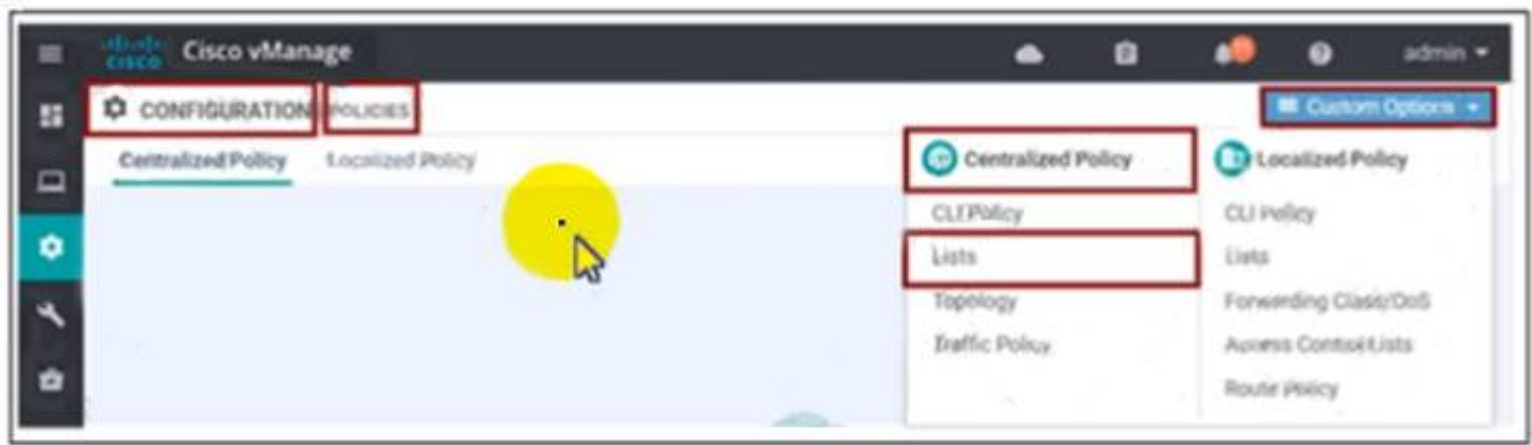
A)



B)



C)



D)

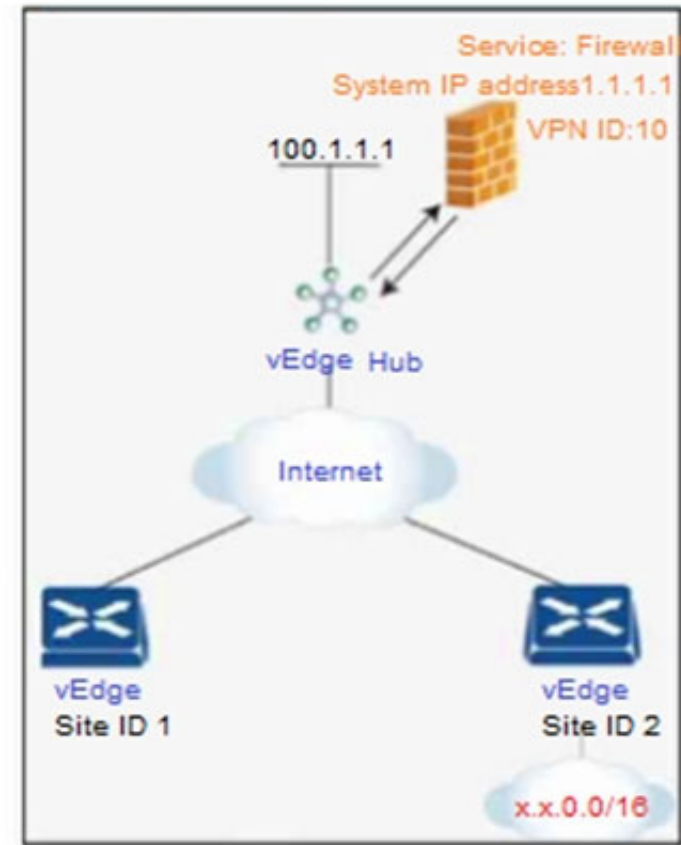


- A. Option A
- B. Option B
- C. Option C
- D. Option D

Answer: D

NEW QUESTION 370

Refer to the exhibit.



An engineer is configuring service chaining. Which set of configurations is required for all traffic from Site ID 1 going toward Site ID 2 to get filtered through the firewall on the hub site?

A)

- vpn 20
- service FW address 1.1.1.1
- policy
- lists
- site-list firewall-sites
- site-id 1
- control-policy firewall-service
- sequence 10
- match route
- site-id 2
- action accept
- set service FW vpn 20
- default-action accept
- apply-policy
- site-list firewall-sites control-policy firewall-service out

B)

```
vpn 10
service FW address 1.1.1.1
policy
lists
site-list firewall-sites
site-id 1
control-policy firewall-service
sequence 10
match route
site-id 2
action accept
set service FW vpn 10
default-action accept
apply-policy
site-list firewall-sites control-policy firewall-service out
```

C)

```
vpn 10
service FW address 1.1.1.1
policy
lists
site-list firewall-sites
site-id 1
control-policy firewall-service
sequence 10
match route
site-id 2
action accept
set service FW vpn 20
default-action accept
apply-policy
site-list firewall-sites control-policy firewall-service out
```

D)

```
vpn 10
service FW address 1.1.1.2
policy
lists
site-list firewall-sites
site-id 1
control-policy firewall-service
sequence 10
match route
site-id 2
action accept
set service FW vpn 10
default-action accept
apply-policy
site-list firewall-sites control-policy firewall-service out
```

- A. Option A
- B. Option B
- C. Option C
- D. Option D

Answer: B

Explanation:

<https://www.cisco.com/c/en/us/td/docs/routers/sdwan/configuration/policies/vedge/policies-book/service-chainin>

NEW QUESTION 371

Which scheduling method is configured by default for the eight queues in the cloud vEdge router1?

- A. low latency queue
- B. priority queue
- C. weighted random early detection
- D. weighted round robin

Answer: D

NEW QUESTION 372

Drag and drop the policies from the left onto the correct policy types on the right.

strict hub-and-spoke topology

perform shaping on traffic

service firewall insertion

prefer voice and video via MPLS link

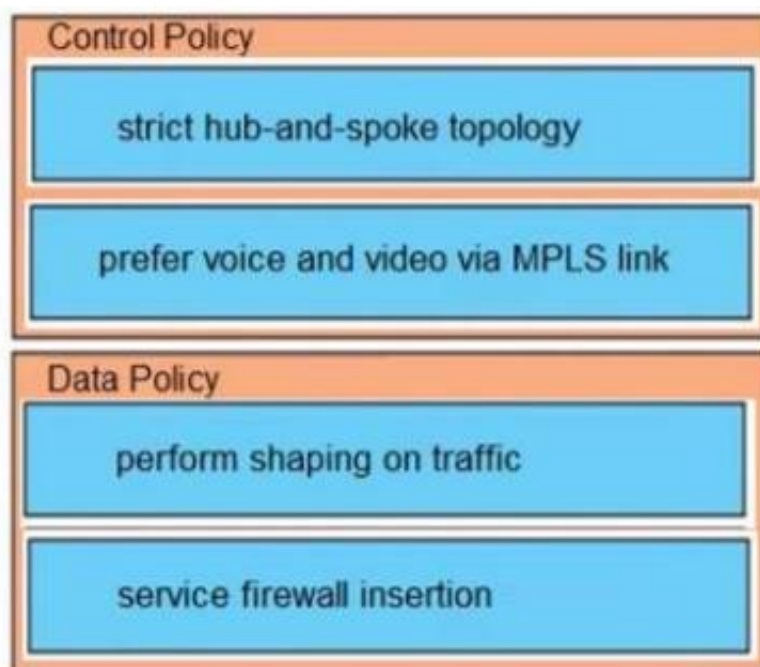
Control Policy

Data Policy

- A. Mastered
- B. Not Mastered

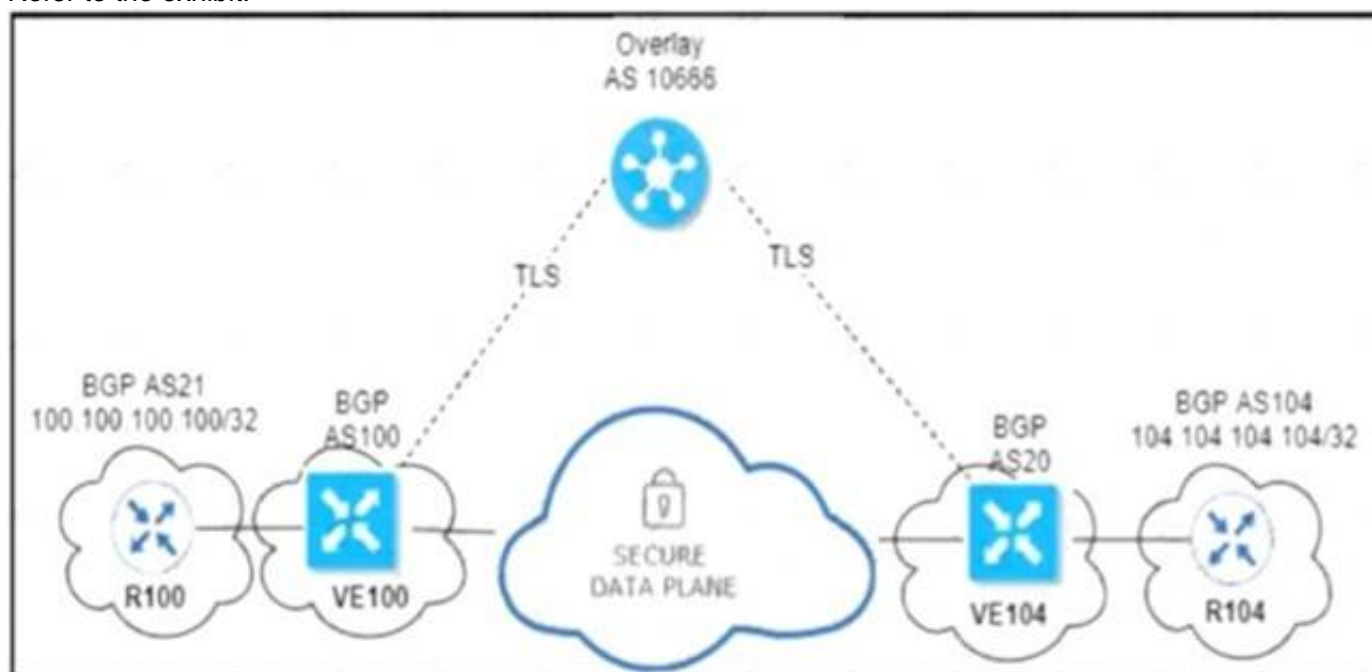
Answer: A

Explanation:



NEW QUESTION 374

Refer to the exhibit.



An engineer configured OMP with an overlay-as of 10666. What is the AS-PATH for prefix 104.104.104.104/32 on R100?

- A. 100 10666
- B. 100 20 104
- C. 100 10666 20 104
- D. 100 10666 104

Answer: A

NEW QUESTION 378

A policy is created to influence routing in the network using a group of prefixes. What policy application will achieve this goal when applied to a site list?

- A. Vpn-membership policy
- B. Control-policy
- C. cflowd-template
- D. App-route policy

Answer: B

Explanation:

Control policy, which is similar to standard routing policy, operates on routes and routing information in the control plane of the overlay network. Centralized control policy, which is provisioned on the Cisco vSmart Controller, is the Cisco SD-WAN technique for customizing network-wide routing decisions that determine or influence routing paths through the overlay network. Local control policy, which is provisioned on a Cisco vEdge device, allows customization of routing decisions

NEW QUESTION 381

Which multicast component is irrelevant when defining a multicast replicator outside the local network without any multicast sources or receivers?

- A. PIM interfaces
- B. TLOC
- C. overlay BFD
- D. OMP

Answer: A

NEW QUESTION 386

Which two features does the application firewall provide? (Choose two.)

- A. classification of 1400+ layer 7 applications
- B. blocks traffic by application or application-family
- C. numbered sequences of match-action pairs
- D. classification of 1000+ layer 4 applications
- E. application match parameters

Answer: AB

Explanation:

This application aware firewall feature provides the following benefits:

- Application visibility and granular control
- Classification of 1400+ layer 7 applications
- Allows or blocks traffic by application, category, application-family or application-group

NEW QUESTION 389

Which on-the-box security feature supported by the Cisco ISR 4451 SD-WAN device and not on vEdge?

- A. Cloud Express service
- B. Enterprise Firewall with Application Awareness
- C. reverse proxy
- D. IPsec/GRE cloud proxy

Answer: B

Explanation:

<https://www.cisco.com/c/en/us/products/collateral/software/one-wan-subscription/guide-c07-740642.html#Step2>

NEW QUESTION 390

Which action is performed during the onboarding process when a WAN Edge router is connected to ZTP server ztp.viptela.com?

- A. The router is connected to WAN Edge Cloud Center
- B. The router is synced with vSmart Controller via an IPsec tunnel
- C. The router receives its vBond Orchestrator information
- D. The router is connected to vSmart Controller via a DTLS tunnel

Answer: C

NEW QUESTION 393

Refer to the exhibit

PEER PRIVATE IP	PEER PRIVATE PORT	PEER PUBLIC IP	PEER PUBLIC PORT	REMOTE COLOR	STATE	LOCAL ERROR
10.0.2.73	23456	10.0.2.73	23456	default	trying	DCONFALL

Cisco SD-WAN is deployed with controllers hosted in a data center. All branches have WAN Edge devices with dual connections to the data center: one via Internet and the other using MPLS. Three branches out of 20 have issues with their control connections on the MPLS circuit. The local error refers to Control Connection Failure. Which action resolves the issue*?

- A. Rectify any issues with the underlay routing configuration
- B. Match the TLOC color on the controllers and all WAN Edge devices
- C. Match certificates for the DTLS connection and Root CA must be installed first on WAN Edge devices
- D. Update the system IP on vManage and then resend it to the controllers

Answer: A

NEW QUESTION 396

What is the OMP graceful restart default value on vSmart controllers and WAN Edge routers?

- A. 21,600 seconds
- B. 43,200 seconds
- C. 86,400 seconds
- D. 604,800 seconds

Answer: B

NEW QUESTION 399

Which OSPF command makes the WAN Edge router a less preferred exit from a site with a dual WAN Edge design?

A)

```
vpn vpn-id
router
ospf
area number
range prefix/length
```

B)

```
vpn vpn-id
router
ospf
max-metric
```

C)

```
vpn vpn-id
router
ospf
area number
no-summary
```

D)

```
vpn vpn-id
router
ospf
area number
nssa
no-summary
```

- A. Option A
- B. Option B
- C. Option C
- D. Option D

Answer: B

NEW QUESTION 403

The network administrator is configuring a QoS scheduling policy on traffic received from transport side tunnels on WAN Edge 5000 routers at location 406141498. Which command must be configured on these devices?

- A. cloud-qos
- B. service qos
- C. cloud-mis qos
- D. mis qos

Answer: A

NEW QUESTION 408

What is the procedure to upgrade all Cisco SD-WAN devices to a recent version?

- A. The upgrade is performed for a group of WAN Edge devices first to ensure data-plane availability when other controllers are updated.
- B. The upgrade is performed first on vManage, then on WAN Edge devices, then on vBond and finally on vSmart. The reboot must start from WAN Edge devices.
- C. Upgrade and reboot are performed first on vManage then on vBond then on vSmart
- D. and finally on the Cisco WAN Edge devices.
- E. Upgrade and reboot are performed first on vBond
- F. then on vSmart
- G. and finally on the Cisco WAN Edge devices.

Answer: C

NEW QUESTION 410

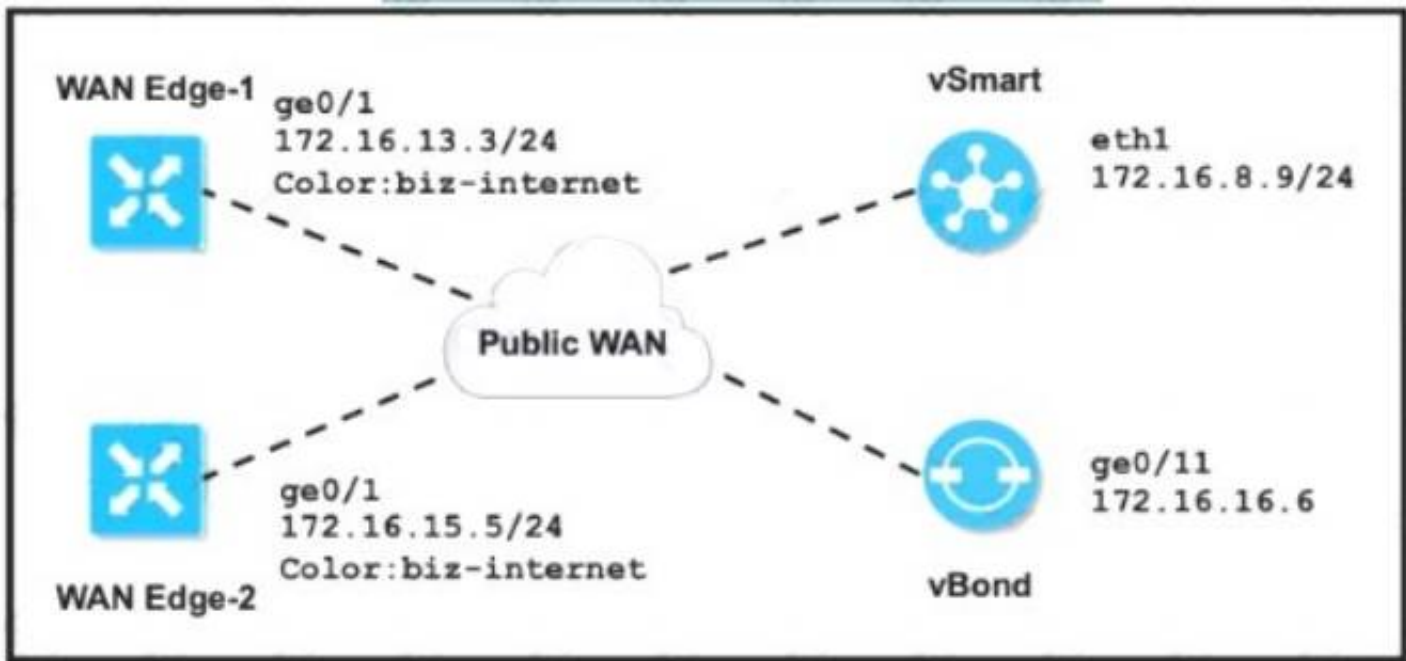
REST applications communicate over HTTP or HTTPS to make calls between network devices. Which two HTTPS standard methods are included? (Choose two.)

- A. Array
- B. DELETE
- C. POST
- D. Scalar
- E. Object

Answer: BC

NEW QUESTION 411

Refer to the exhibit.



The tunnel interface configuration on both WAN Edge routers is:

```

vpn 0
interface ge0/1
tunnel-interface
encapsulation ipsec
color biz-internet
allow-service dhcp
allow-service dns
allow-service icmp
no allow-service sshd
no allow-service ntp
no allow-service stun
!
no shutdown
  
```

Which configuration for WAN Edge routers will connect to the Internet?

- ☐ vpn 0
 - interface ge0/1
 - ip address 172.16.15.5/24
 - !
 - ip route 0.0.0.0/0 172.16.13.1
- ☐ vpn 0
 - interface ge0/1
 - ip address 172.16.13.3/24
 - !
 - ip route 0.0.0.0/0 172.16.13.1
- ☐ vpn 0
 - interface ge0/1
 - ip address 172.16.13.3/24
 - !
 - ip route 0.0.0.0/0 172.16.8.1
- ☐ vpn 0
 - interface ge0/1
 - ip address 172.16.15.5/24
 - !
 - ip route 0.0.0.0/0 172.16.8.1

- A. Option A
- B. Option B
- C. Option C
- D. Option D













Answer: B

Explanation:

https://sdwan-docs.cisco.com/Product_Documentation/Software_Features/SD-WAN_Release_16.3/02System_a

NEW QUESTION 412

Refer to the exhibit.

Address Family	  On  Off
Address Family	 <input type="text" value="ipv4-unicast"/>
Maximum Number of Prefixes	 <input type="text"/>
Route Policy In	  On  Off
Route Policy Out	  On  Off
Policy Name	 <input type="text" value="eBGP_Community_Policy"/>

The engineer must assign community tags to 3 of its 74 critical server networks as soon as that are advertised to BGP peers. These server networks must not be advertised outside AS. Which configuration fulfill this requirement?

A)

```

policy
route-policy eBGP_Community_Policy
sequence 1
match
address Community_Prefix
action accept
set
community 999:65000 local-as
default-action reject
lists
prefix-list Community_Prefix
ip-prefix 20.20.20.0/24
ip-prefix 21.21.21.0/24
ip-prefix 22.22.22.0/24

```

B)

```

policy
route-policy eBGP_Community_Policy
sequence 1
match
address Community_Prefix
action accept
set
community 999:65000 no-export
default-action accept
lists
prefix-list Community_Prefix
ip-prefix 20.20.20.0/24
ip-prefix 21.21.21.0/24
ip-prefix 22.22.22.0/24

```

C)

```

policy
route-policy eBGP_Community_Policy
sequence 1
match
address Community_Prefix
action accept
set
community 999:65000 local-as
default-action reject
lists
prefix-list Community_Prefix
ip-prefix 20.20.20.0/24
ip-prefix 21.21.21.0/24
ip-prefix 22.22.22.0/24

```

D)

```

policy
route-policy eBGP_Community_Polic
sequence 1
match
address Community_Prefix
action accept
set
community 999:65000 no-export
default-action accept
lists
prefix-list Community_Prefix
ip-prefix 20.20.20.0/24
ip-prefix 21.21.21.0/24
ip-prefix 22.22.22.0/24

```

- A. Option A
- B. Option B
- C. Option C
- D. Option D

Answer: D

NEW QUESTION 417

An engineer is tasked to improve throughput for connection-oriented traffic by decreasing round-trip latency. Which configuration will achieve this goal?

- A. turn on "Enable TCP Optimization"
- B. turn off "Enhance ECMP Keying"
- C. turn off "Enable TCP Optimization"
- D. turn on "Enhance ECMP Keying"

Answer: A

Explanation:

TCP optimization fine-tunes the processing of TCP data traffic to decrease round-trip latency and improve throughput.

<https://www.cisco.com/c/dam/en/us/td/docs/routers/sdwan/configuration/config-18-2.pdf#page=530>

NEW QUESTION 421

Which IP address must be reachable by a WAN Edge device for the ZIP process to work?

- A. 10.1.1.1
- B. 4.4 4.4
- C. 172.16.1.1
- D. 8.8.8.8

Answer: D

NEW QUESTION 424

A customer wants to use AWS for Cisco SD-WAN IaaS services by deploying virtual SD-WAN routers in a transit AWS VPC. The transit VPC then connects via site-to-site IPsec tunnels to an AWS transit gateway. Which transit VPC connects via site-to-site IPsec tunnels to an AWS transit gateway?

- A. Cisco Cloud onRamp for Multicloud
- B. Cisco Cloud onRamp for SaaS
- C. Cisco Cloud onRamp for Colocation
- D. Cisco Cloud onRamp for IaaS

Answer: D

NEW QUESTION 426

Which two protocols are supported for software image delivery when images are hosted on a remote server? (Choose two.)

- A. HTTPS
- B. SSL
- C. HTTP
- D. TFTP
- E. FTP

Answer: DE

NEW QUESTION 430

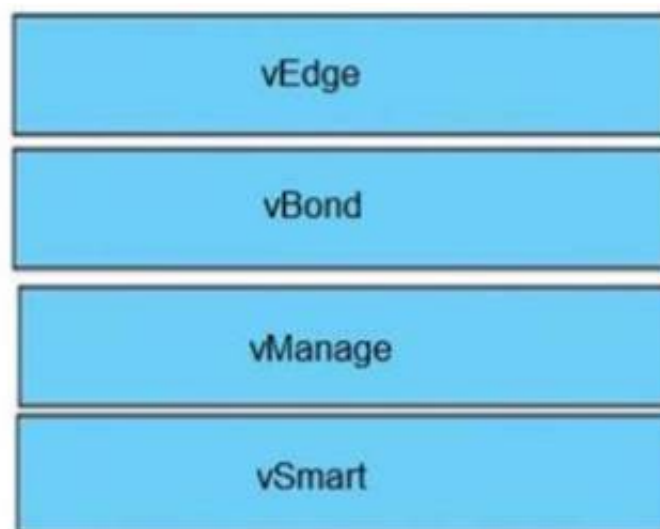
Drag and drop the devices from the left onto the correct functions on the right.

vSmart	establishes a secured data plane
vManage	first point of authentication
vEdge	single pane of glass
vBond	enforces control policies

- A. Mastered
- B. Not Mastered

Answer: A

Explanation:



NEW QUESTION 435

Which configuration changes the packet loss priority from low to highly?

A)

```
policy
 policer ccnp-traffic
  rate 1000000
  burst 20000
  plp high
```

B)

```
policy
 policer ccnp-traffic
  rate 1000000
  burst 20000
  exceed remark
```

C)

```
policy
 policer ccnp-traffic
  rate 1000000
  burst 20000
  exceed drop
```

D)

```
policy
 policer ccnp-traffic
  rate 1000000
  burst 20000
  exceed high
```

- A. Option A
- B. Option B
- C. Option C
- D. Option D

Answer: B

Explanation:

we change the PLP from low to high (configured by the **policer exceed remark** command).

<https://www.cisco.com/c/en/us/td/docs/routers/sdwan/configuration/qos/vEdge-20-x/qos-book/forwarding-qos.h>

NEW QUESTION 439

.....

Thank You for Trying Our Product

We offer two products:

1st - We have Practice Tests Software with Actual Exam Questions

2nd - Questions and Answers in PDF Format

300-415 Practice Exam Features:

- * 300-415 Questions and Answers Updated Frequently
- * 300-415 Practice Questions Verified by Expert Senior Certified Staff
- * 300-415 Most Realistic Questions that Guarantee you a Pass on Your First Try
- * 300-415 Practice Test Questions in Multiple Choice Formats and Updates for 1 Year

100% Actual & Verified — Instant Download, Please Click
[Order The 300-415 Practice Test Here](#)