



**Fortinet**

## **Exam Questions NSE5\_FMG-7.2**

Fortinet NSE 5 - FortiManager 7.2

#### NEW QUESTION 1

- (Topic 1)

An administrator would like to review, approve, or reject all the firewall policy changes made by the junior administrators.

How should the Workspace mode be configured on FortiManager?

- A. Set to workflow and use the ADOM locking feature
- B. Set to read/write and use the policy locking feature
- C. Set to normal and use the policy locking feature
- D. Set to disable and use the policy locking feature

**Answer:** A

#### Explanation:

Reference: [https://help.fortinet.com/fmgr/50hlp/52/5-2-0/FMG\\_520\\_Online\\_Help/200\\_What's-New.03.03.html](https://help.fortinet.com/fmgr/50hlp/52/5-2-0/FMG_520_Online_Help/200_What's-New.03.03.html)

#### NEW QUESTION 2

- (Topic 1)

Which configuration setting for FortiGate is part of a device-level database on FortiManager?

- A. VIP and IP Pools
- B. Firewall policies
- C. Security profiles
- D. Routing

**Answer:** C

#### Explanation:

The FortiManager stores the FortiGate configuration details in two distinct databases. The device-level database includes configuration details related to device-level settings, such as interfaces, DNS, routing, and more. The ADOM-level database includes configuration details related to firewall policies, objects, and security profiles.

#### NEW QUESTION 3

- (Topic 1)

An administrator would like to create an SD-WAN using central management in the Training ADOM.

To create an SD-WAN using central management, which two steps must be completed? (Choose two.)

- A. Specify a gateway address when you create a default SD-WAN static route
- B. Enable SD-WAN central management in the Training ADOM
- C. Configure and install the SD-WAN firewall policy and SD-WAN static route before installing the SD-WAN template settings
- D. Remove all the interface references such as routes or policies that will be a part of SD-WAN member interfaces

**Answer:** BD

#### Explanation:

Reference: <https://docs.fortinet.com/document/fortigate/6.0.0/cookbook/676493/removing-existing-configuration-references-to-interfaces>

#### NEW QUESTION 4

- (Topic 1)

Which two conditions trigger FortiManager to create a new revision history? (Choose two.)

- A. When configuration revision is reverted to previous revision in the revision history
- B. When FortiManager installs device-level changes to a managed device
- C. When FortiManager is auto-updated with configuration changes made directly on a managed device
- D. When changes to device-level database is made on FortiManager

**Answer:** BC

#### Explanation:

Reference: [https://help.fortinet.com/fmgr/50hlp/56/5-6-1/FortiManager\\_Admin\\_Guide/1000\\_Device%20Manager/1500\\_Manage\\_device\\_configs/0600\\_Manage%20config%20rev%20history.htm](https://help.fortinet.com/fmgr/50hlp/56/5-6-1/FortiManager_Admin_Guide/1000_Device%20Manager/1500_Manage_device_configs/0600_Manage%20config%20rev%20history.htm)

#### NEW QUESTION 5

- (Topic 1)

An administrator run the reload failure command: `diagnose test deploymanager reload config`

`<deviceid>` on FortiManager. What does this command do?

- A. It downloads the latest configuration from the specified FortiGate and performs a reload operation on the device database.
- B. It installs the latest configuration on the specified FortiGate and update the revision history database.
- C. It compares and provides differences in configuration on FortiManager with the current running configuration of the specified FortiGate.
- D. It installs the provisioning template configuration on the specified FortiGate.

**Answer:** A

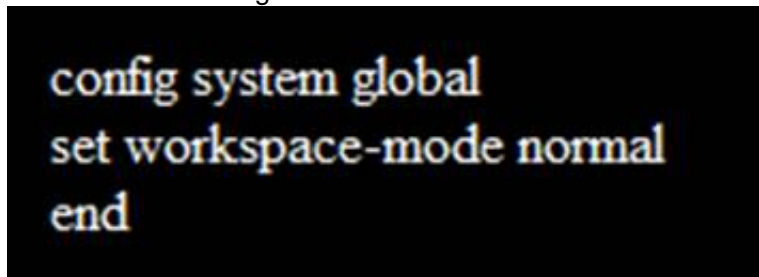
#### Explanation:

Reference: <https://community.fortinet.com/t5/FortiManager/Technical-Note-Retrieve-configuration-file-using-CLI-from-a/ta-p/191000?externalID=FD36387>

#### NEW QUESTION 6

- (Topic 1)

Refer to the following exhibit:



```
config system global
set workspace-mode normal
end
```

Which of the following statements are true based on this configuration? (Choose two.)

- A. The same administrator can lock more than one ADOM at the same time
- B. Ungraceful closed sessions will keep the ADOM in a locked state until the administrator session times out
- C. Unlocking an ADOM will submit configuration changes automatically to the approval administrator
- D. Unlocking an ADOM will install configuration automatically on managed devices

**Answer:** AB

#### Explanation:

Reference:[http://help.fortinet.com/fmgr/cli/5-6-2/Document/0800\\_ADOMs/200\\_Configuring+.htm](http://help.fortinet.com/fmgr/cli/5-6-2/Document/0800_ADOMs/200_Configuring+.htm)

#### NEW QUESTION 7

- (Topic 1)

You are moving managed FortiGate devices from one ADOM to a new ADOM. Which statement correctly describes the expected result?

- A. Any pending device settings will be installed automatically
- B. Any unused objects from a previous ADOM are moved to the new ADOM automatically
- C. The shared policy package will not be moved to the new ADOM
- D. Policy packages will be imported into the new ADOM automatically

**Answer:** C

#### Explanation:

Reference:<https://community.fortinet.com/t5/FortiManager/Technical-Note-How-to-move-objects-to-new-ADOM-on-FortiManager/ta-p/198342>

#### NEW QUESTION 8

- (Topic 1)

Which two settings must be configured for SD-WAN Central Management? (Choose two.)

- A. SD-WAN must be enabled on per-ADOM basis
- B. You can create multiple SD-WAN interfaces per VDOM
- C. When you configure an SD-WAN, you must specify at least two member interfaces.
- D. The first step in creating an SD-WAN using FortiManager is to create two SD-WAN firewall policies.

**Answer:** AC

#### NEW QUESTION 9

- (Topic 1)

View the following exhibit, which shows the Download Import Report:

```
Start to import config from devices(Remote-FortiGate) vdom (root)to adom (MyADOM),
Package(Remote-FortiGate)
"firewall address", SUCCESS,"(name=REMOTE_SUBNET,oid=580, new object)"
"firewall policy",SUCCESS,"(name=1, oid=990,new object)"
"firewall policy",FAIL,"(name=ID:2(#2), oid=991, reason=interface(interface binding
Contradiction.detail:any<-port6)binding fail)"
```

Why it is failing to import firewall policy ID 2?

- A. The address object used in policy ID 2 already exist in ADON database with any as interface association and conflicts with address object interface association locally on the FortiGate
- B. Policy ID 2 is configured from interface any to port6 FortiManager rejects to import this policy because any interface does not exist on FortiManager
- C. Policy ID 2 does not have ADOM Interface mapping configured on FortiManager
- D. Policy ID 2 for this managed FortiGate already exists on FortiManager in policy package named Remote-FortiGate.

**Answer:** A

#### Explanation:

FortiManager\_6.4\_Study\_Guide-Online – page 331 & 332

#### NEW QUESTION 10

- (Topic 1)  
 What will happen if FortiAnalyzer features are enabled on FortiManager?

- A. FortiManager will reboot
- B. FortiManager will send the logging configuration to the managed devices so the managed devices will start sending logs to FortiManager
- C. FortiManager will enable ADOMs automatically to collect logs from non-FortiGate devices
- D. FortiManager can be used only as a logging device.

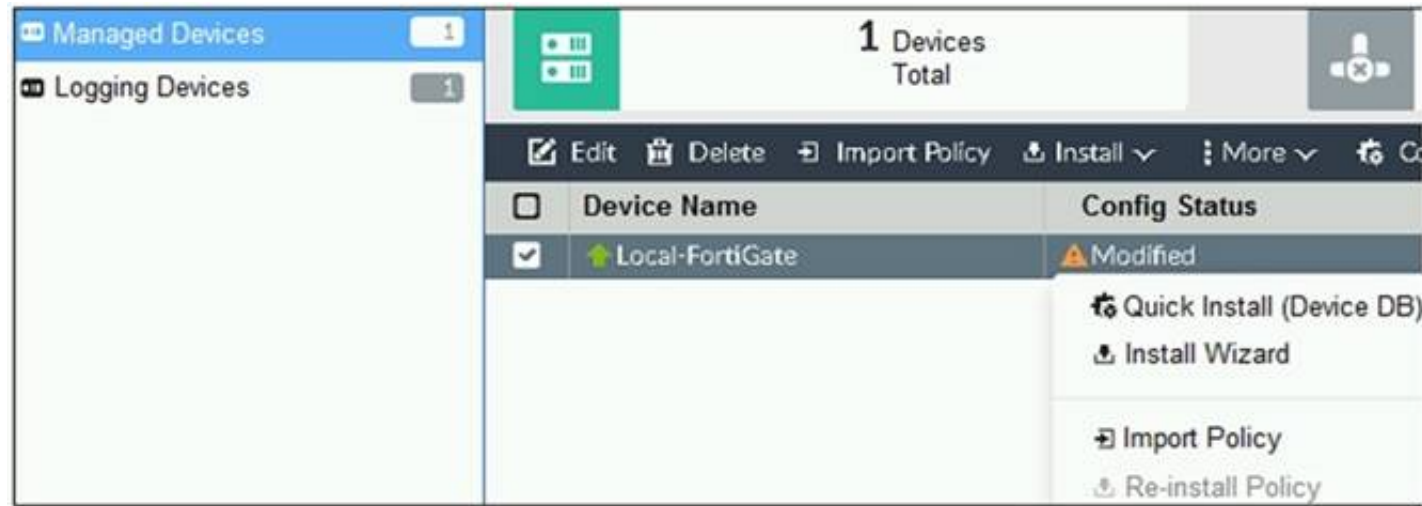
Answer: A

Explanation:

Reference:[https://help.fortinet.com/fmgr/50hlp/56/5-6-1/FortiManager\\_Admin\\_Guide/1800\\_FAZ%20Features/0200\\_Enable%20FAZ%20Features.htm](https://help.fortinet.com/fmgr/50hlp/56/5-6-1/FortiManager_Admin_Guide/1800_FAZ%20Features/0200_Enable%20FAZ%20Features.htm)

#### NEW QUESTION 10

- (Topic 1)  
 Refer to the exhibit.



You are using the Quick Install option to install configuration changes on the managed FortiGate.  
 Which two statements correctly describe the result? (Choose two.)

- A. It will not create a new revision in the revision history
- B. It installs device-level changes to FortiGate without launching the Install Wizard
- C. It cannot be canceled once initiated and changes will be installed on the managed device
- D. It provides the option to preview configuration changes prior to installing them

Answer: BC

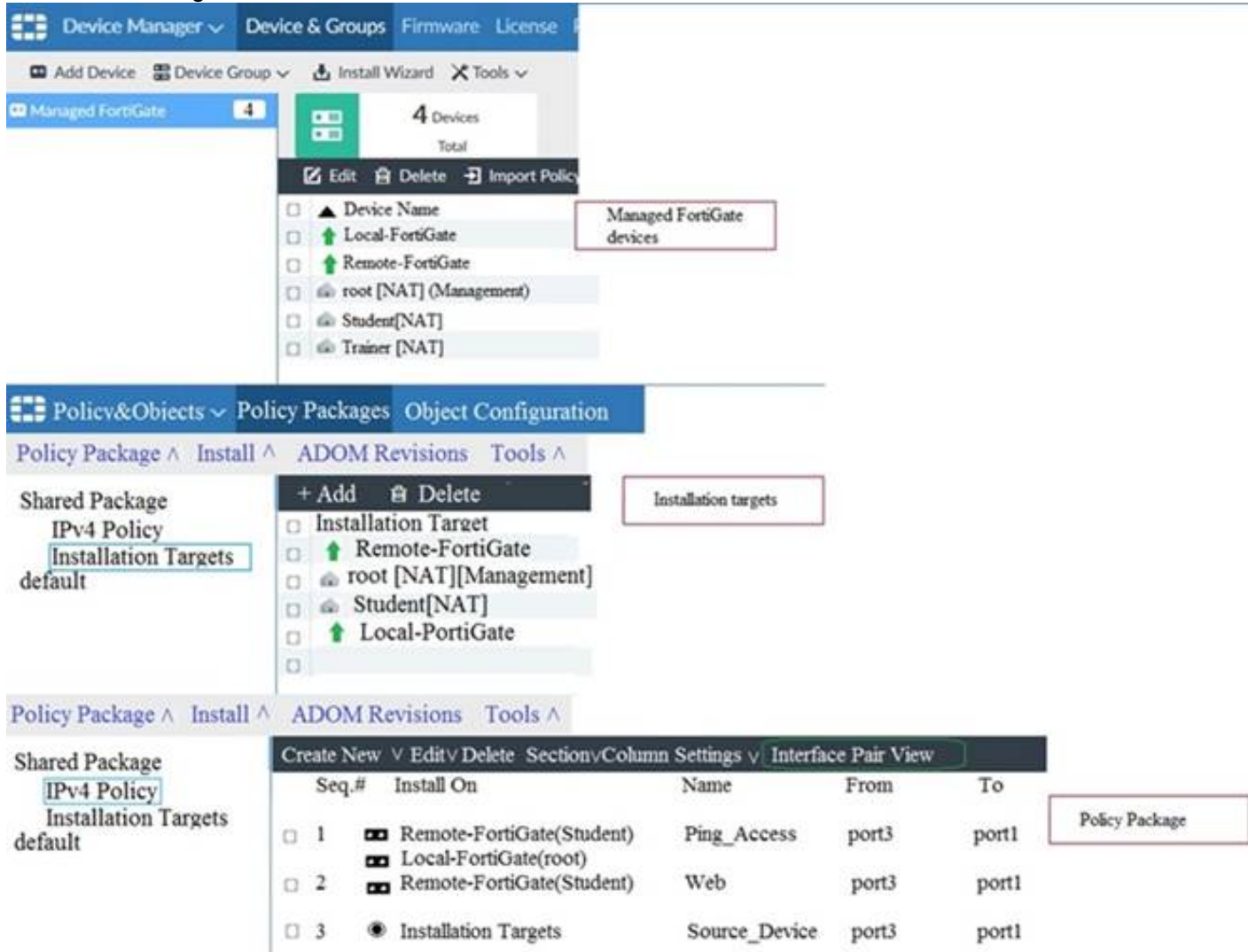
Explanation:

FortiManager\_6.4\_Study\_Guide-Online – page 164

The Install Config option allows you to perform a quick installation of device-level settings without launching the Install Wizard. When you use this option, you cannot preview the changes prior to committing. Administrator should be certain of the changes before using this install option, because the install can't be cancelled after the process is initiated.

#### NEW QUESTION 15

- (Topic 1)  
 View the following exhibit.





Given the configurations shown in the exhibit, what can you conclude from the installation targets in the Install On column?

- A. The Install On column value represents successful installation on the managed devices
- B. Policy seq#3 will be installed on all managed devices and VDOMs that are listed under Installation Targets
- C. Policy seq#3 will be installed on the Trainer[NAT] VDOM only
- D. Policy seq#3 will be not installed on any managed device

Answer: B

NEW QUESTION 20

- (Topic 1)

Refer to the exhibit.

```
FortiManager # diagnose dvm device list
--- There are currently 1 devices/vdoms managed ---

TYPE      OID  SN      HA  IP      NAME      ADOM      IPS      FIRMWARE
fmg/faz enabled 157  FGVM01.. - 10.200.1.1 Local-FortiGate My_ADOM  14.00641 (regular) 6.0 MR2 (866)
|- STATUS: dev-db: modified; conf: in sync; cond: pending; dm: retrieved; conn: up

|- vdom:[3]root flags:0 adom:My_ADOM pkg:[imported]Local-FortiGate
```

Which two statements about the output are true? (Choose two.)

- A. The latest revision history for the managed FortiGate does match with the FortiGate running configuration
- B. Configuration changes have been installed to FortiGate and represents FortiGate configuration has been changed
- C. The latest history for the managed FortiGate does not match with the device-level database
- D. Configuration changes directly made on the FortiGate have been automatically updated to device-level database

Answer: AC

Explanation:

STATUS: dev-db: modified; conf: in sync; cond: pending; dm: retrieved; conn: up – dev-db: modified – This is the device setting status which indicates that configuration changes were made on FortiManager.– conf: in sync – This is the sync status which shows that the latest revision history is in sync with Fortigate's configuration.– cond: pending – This is the configuration status which says that configuration changes need to be installed. Most probably a retrieve was done in the past (dm: retrieved) updating the revision history DB (conf: in sync) and FortiManager device level DB, now there is a new modification on FortiManager device level DB (dev-db: modified) which wasn't installed to FortiGate (cond: pending), hence; revision history DB is not aware of that modification and doesn't match device DB. Conclusion:– Revision DB does match FortiGate.– No changes were installed to FortiGate yet.– Device DB doesn't match Revision DB.– No changes were done on FortiGate (auto-update) but configuration was retrieved instead After an Auto-Update or Retrieve:device database = latest revision = FGT Then after a manual change on FMG end (but no install yet):latest revision = FGT (still) but now device database has been modified (is different). After reverting to a previous revision in revision history:device database = reverted revision != FGT

NEW QUESTION 24

- (Topic 2)

Refer to the exhibit.

Edit Address

Address Name

LAN

Type

IP/Netmask

IP/Netmask

192.168.1.0/255.255.255.0

Interface

any

Static Route Configuration

OFF

Comments

Add to Groups

Click to add ...

Advanced Options >

Per-Device Mapping

ON

+ Add Edit Delete

Name

VDOM

Details

Remote-FortiGate

root

IP/Netmask:10.200.1.0/255.255.255.0

An administrator has created a firewall address object, Training which is used in the Local- FortiGate policy package.

When the installation operation is performed, which IP/Netmask will be installed on the Local-FortiGate, for the Trainingfirewall address object?

- A. 192.168.0.1/24
- B. 10.200.1.0/24
- C. It will create a firewall address group on Local-FortiGate with 192.168.0.1/24 and 10.0.1.0/24 object values.
- D. Local-FortiGate will automatically choose an IP/Netmask based on its network interface settings.

**Answer:** A

#### NEW QUESTION 27

- (Topic 2)

An administrator is replacing a device on FortiManager by running the following command: `execute device replace sn <devname> <serialnum>`. What device name and serial number must the administrator use?

- A. Device name and serial number of the original device.
- B. Device name and serial number of the replacement device.
- C. Device name of the replacement device and serial number of the original device.
- D. Device name of the original device and serial number of the replacement device.

**Answer:** D

#### NEW QUESTION 29

- (Topic 2)

What is the purpose of ADOM revisions?

- A. To create System Checkpoints for the FortiManager configuration.
- B. To save the current state of the whole ADOM.
- C. To save the current state of all policy packages and objects for an ADOM.
- D. To revert individual policy packages and device-level settings for a managed FortiGate by reverting to a specific ADOM revision

**Answer:** C

#### Explanation:

Fortimanager 6.4 Study guide page 198

#### NEW QUESTION 31

- (Topic 2)

Refer to the exhibit.



An administrator logs into the FortiManager GUI and sees the panes shown in the exhibit. Which two reasons can explain why the FortiAnalyzer feature panes do not appear? (Choose two.)

- A. The administrator logged in using the unsecure protocol HTTP, so the view is restricted.
- B. The administrator profile does not have full access privileges like the Super\_User profile.
- C. The administrator IP address is not a part of the trusted hosts configured on FortiManager interfaces.
- D. FortiAnalyzer features are not enabled on FortiManager.

**Answer:** BD

#### NEW QUESTION 33

- (Topic 2)

An administrator's PC crashes before the administrator can submit a workflow session for approval. After the PC is restarted, the administrator notices that the ADOM was locked from the session before the crash. How can the administrator unlock the ADOM?

- A. Restore the configuration from a previous backup.
- B. Log in as Super\_User in order to unlock the ADOM.
- C. Log in using the same administrator account to unlock the ADOM.
- D. Delete the previous admin session manually through the FortiManager GUI or CLI.

**Answer:** D

#### NEW QUESTION 34

- (Topic 3)

What does a policy package status of Modified indicate?

- A. FortiManager is unable to determine the policy package status
- B. The policy package was never imported after a device was registered on FortiManager
- C. The Policy configuration has been changed on a managed device and changes have not yet been imported into FortiManager
- D. The Policy package configuration has been changed on FortiManager and changes have not yet been installed on the managed device.

**Answer: B**

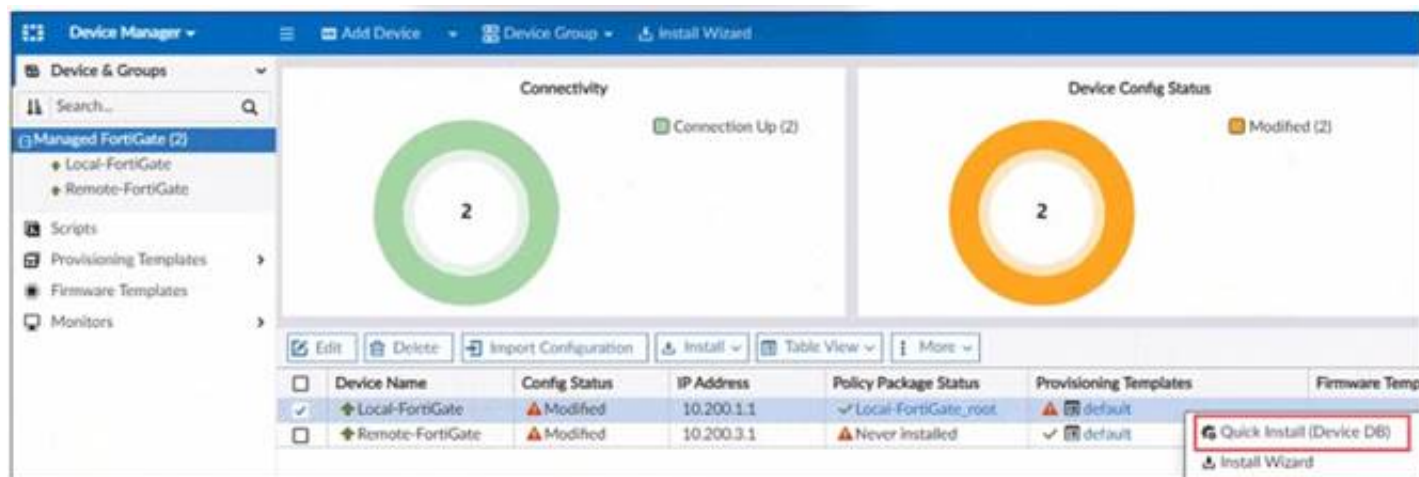
**Explanation:**

Reference: [http://help.fortinet.com/fmgr/50hlp/56/5-6-1/FortiManager\\_Admin\\_Guide/1200\\_Policy%20and%20Objects/0800\\_Managing%20policy%20packages/2200\\_Policy%20Package%20Installation%20targets.htm](http://help.fortinet.com/fmgr/50hlp/56/5-6-1/FortiManager_Admin_Guide/1200_Policy%20and%20Objects/0800_Managing%20policy%20packages/2200_Policy%20Package%20Installation%20targets.htm)

#### NEW QUESTION 38

- (Topic 3)

Refer to the exhibit.



You are using the Quick install option to install configuration changes on the managed FortiGate

Which two statements correctly describe the result? (Choose two)

- A. It installs device-level changes on the FortiGate device without launching the Install Wizard
- B. It installs all the changes in the device database first and the administrator must reinstall the changes on the FortiGate device
- C. It provides the option to preview only the policy package changes before installing them
- D. It install provisioning template changes on the FortiGate device

**Answer: AD**

#### NEW QUESTION 42

- (Topic 3)

What will happen if FortiAnalyzer features are enabled on FortiManager?

- A. FortiManager will keep all the logs and reports on the FortiManager.
- B. FortiManager will enable ADOMs to collect logs automatically from non-FortiGate devices.
- C. FortiManager will install the logging configuration to the managed devices
- D. FortiManager can be used only as a logging device.

**Answer: C**

#### NEW QUESTION 47

- (Topic 3)

Which two conditions trigger FortiManager to create a new revision history? (Choose two.)

- A. When FortiManager is auto-updated with configuration changes made directly on a managed device
- B. When changes to the device-level database are made on FortiManager
- C. When FortiManager installs device-level changes on a managed device
- D. When a configuration revision is reverted to a previous revision in the revision history

**Answer: BC**

#### NEW QUESTION 51

- (Topic 3)

Refer to the exhibit.



An administrator is about to add the FortiGate device to FortiManager using the discovery process FortiManager is operating behind a NAT device, and the



administrator configured the FortiManager NATed IP address under the FortiManager system administration settings  
 What is the expected result?

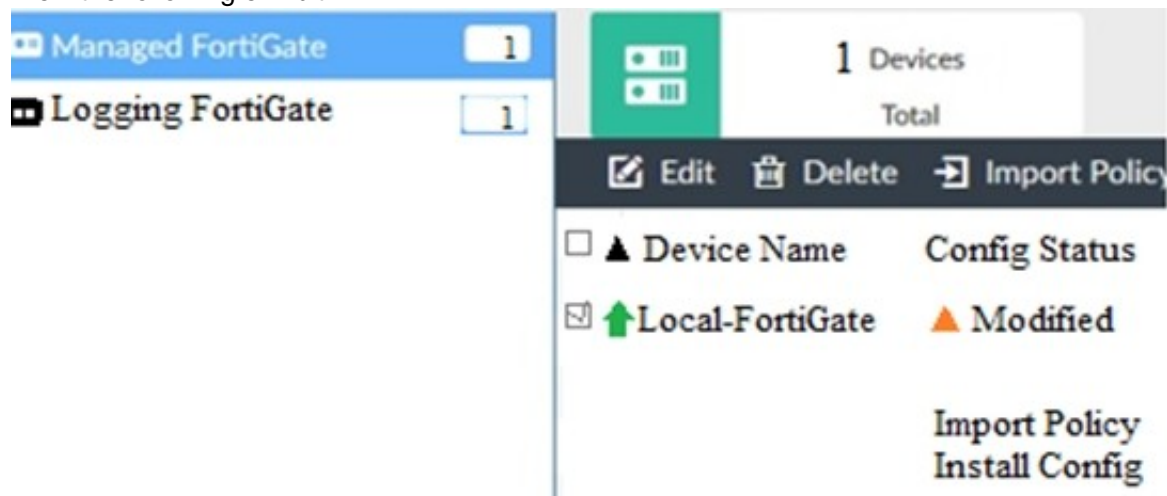
- A. During discovery FortiManager sets the FortiManager NATed IP address on FortiGate
- B. During discovery FortiManager sets both the FortiManager NATed IP address and NAT device IP address on FortiGate
- C. During discovery FortiManager sets the NATed device IP address on FortiGate
- D. During discovery FortiManager uses only the FortiGate serial number to establish the connection

**Answer:** C

#### NEW QUESTION 55

- (Topic 3)

View the following exhibit.



When using the Install Config option to install configuration changes to managed FortiGate, which of the following statements are true? (Choose two.)

- A. Once initiated, the install process cannot be canceled and changes will be installed on the managed device
- B. Will not create new revision in the revision history
- C. Installs device-level changes to FortiGate without launching the Install Wizard
- D. Provides the option to preview configuration changes prior to installing them

**Answer:** AC

#### NEW QUESTION 59

- (Topic 3)

Which two settings are required for FortiManager Management Extension Applications (MEA)? (Choose two.)

- A. When you configure MEA, you must open TCP or UDP port 540.
- B. You must open the ports to the Fortinet registry
- C. You must create a MEA special policy on FortiManager using the super user profile
- D. The administrator must have the super user profile.

**Answer:** CD

#### NEW QUESTION 63

- (Topic 3)

An administrator is replacing a failed device on FortiManager by running the following command:  
 execute device replace sn <devname> <serialnum>.

Which device name and serial number must the administrator use?

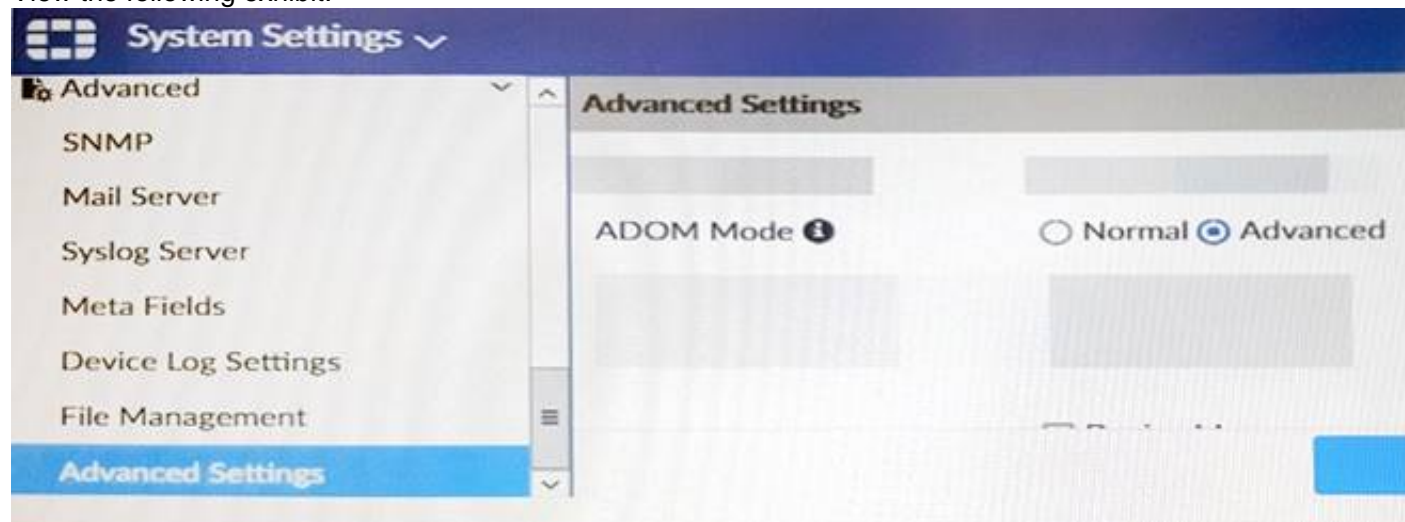
- A. The device name of the new device and serial number of the failed device
- B. The device name and serial number of the failed device
- C. The device name of the failed device and serial number of the new device
- D. The device name and serial number of the new device

**Answer:** C

#### NEW QUESTION 64

- (Topic 3)

View the following exhibit.





Which of the following statements are true based on this configuration setting? (Choose two.)

- A. This setting will enable the ADOMs feature on FortiManager.
- B. This setting is applied globally to all ADOMs.
- C. This setting will allow assigning different VDOMs from the same FortiGate to different ADOMs.
- D. This setting will allow automatic updates to the policy package configuration for a managed device.

**Answer:** BC

#### NEW QUESTION 68

- (Topic 3)

In addition to the default ADOMs, an administrator has created a new ADOM named Training for FortiGate devices. The administrator authorized the FortiGate device on FortiManager using the Fortinet Security Fabric.

Given the administrator's actions, which statement correctly describes the expected result?

- A. The FortiManager administrator must add the authorized device to the Training ADOM using the Add Device wizard only.
- B. The authorized FortiGate will be automatically added to the Training ADOM.
- C. The authorized FortiGate will appear in the root ADOM.
- D. The authorized FortiGate can be added to the Training ADOM using FortiGate Fabric Connectors.

**Answer:** C

#### NEW QUESTION 72

- (Topic 3)

An administrator has added all the devices in a Security Fabric group to FortiManager. How does the administrator identify the root FortiGate?

- A. By a dollar symbol (\$) at the end of the device name
- B. By an at symbol (@) at the end of the device name
- C. By a QUESTION NO: mark(?) at the end of the device name
- D. By an Asterisk (\*) at the end of the device name

**Answer:** D

#### NEW QUESTION 76

- (Topic 3)

An administrator has assigned a global policy package to custom ADOM1. Then the administrator creates a new policy package Fortinet in the custom ADOM1. What will happen to the Fortinet policy package when it is created?

- A. You need to assign the global policy package from the global ADOM
- B. You need to reapply the global policy package to the ADOM
- C. it automatically assigns the global policies
- D. You can select the option to assign the global policies

**Answer:** C

#### NEW QUESTION 79

- (Topic 3)

Refer to the exhibit.

```
Start to import config from device(Local-FortiGate) vdom(root) to
adom(My_ADOM), package(Local-FortiGate_root)

"firewall service category",SKIPPED,"(name=General, oid=697, DUPLICATE)"

"firewall address",SUCCESS,"(name=LOCAL_SUBNET, oid=684, new object)"

"firewall service custom",SUCCESS,"(name=ALL, oid=863, update previous
object)"

"firewall policy",SUCCESS,"(name=1, oid=1090, new object)"
```

Given the configuration shown in the exhibit, how did FortiManager handle the service category named General?

- A. FortiManager ignored the firewall service category General but created a new service category in its database.
- B. FortiManager ignored the firewall service category general and deleted the duplicate value in its database
- C. FortiManager ignored the firewall service category General and updated the FortiGate duplicate value in the FortiGate database.
- D. FortiManager ignored the firewall service category General and did not update its database with the value

**Answer:** D

#### NEW QUESTION 80

- (Topic 3)

Which of the following statements are true regarding VPN Manager? (Choose three.)

- A. VPN Manager must be enabled on a per ADOM basis.
- B. VPN Manager automatically adds newly-registered devices to a VPN community.
- C. VPN Manager can install common IPsec VPN settings on multiple FortiGate devices at the same time.
- D. Common IPsec settings need to be configured only once in a VPN Community for all managed gateways.
- E. VPN Manager automatically creates all the necessary firewall policies for traffic to be tunneled by IPsec.

Answer: ACD

### NEW QUESTION 83

- (Topic 3)

Refer to the exhibit.

The screenshot displays three panels from the FortiGate GUI:

- Managed FortiGate devices:** Shows a tree view of devices. Under 'Managed FortiGate (H)', there is a 'Local-FortiGate' with a 'root' VDOM. Under 'Remote-FortiGate (D)', there are 'Student' and 'Trainer' VDOMs. A connectivity diagram shows a green circle with the number 2.
- Installation targets:** A list of installation targets including 'Local-FortiGate\_root', 'Remote-FortiGate', 'Trainer [NAT]', 'Student [NAT]', 'root [NAT] (Management)', and 'Local-FortiGate'.
- Policy package:** A table showing policy packages and their installation targets.

#	Install On	Name	From	To
1	Remote-FortiGate (root)	Ping_Access	port3	port1
2	Local-FortiGate (root)	Web	port3	port1
3	Installation Targets	Source_Device	port3	port1
Implicit (4-4 / Total: 1)				
4	Installation Targets	Implicit Deny	any	any

Given the configuration shown in the exhibit, what can you conclude from the installation targets in the Install On column? (Choose two)

- A. Policy seq # 2 will not be installed on the Local-FortiGate root VDOM because there is no root VDOM in the Installation Target
- B. Policy seq # 3 will be installed on all managed devices and VDOMs that are listed under Installation Targets
- C. Policy seq # 1 will be installed on the Remote-FortiGate root[NAT] and Student[NAT] VDOMs only
- D. Policy 3 will be installed on all FortiGate devices and vdom belongs to the ADOM
- E. Policy seq # 3 will be skipped because no installation targets are specified

Answer: BC

### NEW QUESTION 84

- (Topic 3)

An administrator would like to authorize a newly-installed AP using AP Manager. What steps does the administrator need to perform to authorize an AP?

- A. Authorize the new AP using AP Manager and wait until the change is updated on the FortiA
- B. Changes to the AP's state do not require installation.
- C. Changes to the AP's state must be performed directly on the managed FortiGate.
- D. Authorize the new AP using AP Manager and install the policy package changes on the managed FortiGate.
- E. Authorize the new AP using AP Manager and install the device level settings on the managed FortiGate.

Answer: D

### NEW QUESTION 85

- (Topic 3)

What does the diagnose dvm check-integrity command do? (Choose two.)

- A. Internally upgrades existing ADOMs to the same ADOM version in order to clean up and correct the ADOM syntax
- B. Verifies and corrects unregistered, registered, and deleted device states
- C. Verifies and corrects database schemas in all object tables
- D. Verifies and corrects duplicate VDOM entries

Answer: BD

### Explanation:

\* 6.2 Study Guide page 305 verify and correct parts of the device manager databases, including:– inconsistent device-to-group and group-to-ADOM memberships– unregistered, registered, and deleted device states– device lock statuses– duplicate VDOM entries

### NEW QUESTION 89

- (Topic 3)

Which of the following statements are true regarding VPN Gateway configuration in VPN Manager? (Choose two.)

- A. Managed gateways are devices managed by FortiManager in the same ADOM
- B. External gateways are third-party VPN gateway devices only
- C. Protected subnets are the subnets behind the device that you don't want to allow access to over the IPsec VPN
- D. Managed devices in other ADOMs must be treated as external gateways

**Answer:** AD

**Explanation:**

Reference: [http://help.fortinet.com/fmgr/50hlp/56/5-6-1/FMG-FAZ/1300\\_VPN\\_Manager/0800\\_IPsec\\_VPN\\_Gateway/0400\\_Create\\_mngd\\_gateway.htm](http://help.fortinet.com/fmgr/50hlp/56/5-6-1/FMG-FAZ/1300_VPN_Manager/0800_IPsec_VPN_Gateway/0400_Create_mngd_gateway.htm)

**NEW QUESTION 93**

.....

## Thank You for Trying Our Product

### We offer two products:

1st - We have Practice Tests Software with Actual Exam Questions

2nd - Questions and Answers in PDF Format

### NSE5\_FMG-7.2 Practice Exam Features:

- \* NSE5\_FMG-7.2 Questions and Answers Updated Frequently
- \* NSE5\_FMG-7.2 Practice Questions Verified by Expert Senior Certified Staff
- \* NSE5\_FMG-7.2 Most Realistic Questions that Guarantee you a Pass on Your First Try
- \* NSE5\_FMG-7.2 Practice Test Questions in Multiple Choice Formats and Updates for 1 Year

**100% Actual & Verified — Instant Download, Please Click**  
**[Order The NSE5\\_FMG-7.2 Practice Test Here](#)**