

Exam Questions AZ-800

Administering Windows Server Hybrid Core Infrastructure

<https://www.2passeasy.com/dumps/AZ-800/>



NEW QUESTION 1

SIMULATION - (Topic 4)

Task 9

You plan to create group managed service accounts (gMSAs).

You need to configure the domain to support the creation of gMSAs.

- A. Mastered
- B. Not Mastered

Answer: A

Explanation:

To configure the domain to support the creation of gMSAs, you need to perform the following steps:

? On a domain controller or a computer that has the Remote Server Administration

Tools (RSAT) installed, open PowerShell as an administrator and run the following command to install the Active Directory module:

Install-WindowsFeature -Name RSAT-AD-PowerShell

? Run the following command to create a Key Distribution Service (KDS) root key, which is required for generating passwords for gMSAs. You only need to do this once per domain:

Add-KdsRootKey -EffectiveImmediately

? Wait for at least 10 hours for the KDS root key to replicate to all domain controllers in the domain. Alternatively, you can use the -EffectiveTime parameter to specify a past date and time for the KDS root key, but this is not recommended for security reasons. For more information, see Add-KdsRootKey.

? After the KDS root key is replicated, you can create and configure gMSAs using

the New-ADServiceAccount and Set-ADServiceAccount cmdlets. For more information, see Create a gMSA and Configure a gMSA.

NEW QUESTION 2

SIMULATION - (Topic 4)

Task 11

You need to ensure that all DHCP clients that get an IP address from SRV1 will be configured to use DC1 as a DNS server.

- A. Mastered
- B. Not Mastered

Answer: A

Explanation:

One possible solution to ensure that all DHCP clients that get an IP address from SRV1 will be configured to use DC1 as a DNS server is to use the DHCP scope options. DHCP scope options are settings that apply to all DHCP clients that obtain an IP address from a specific scope. You can use the DHCP scope options to specify the DNS server IP address, as well as other parameters such as the default gateway, the domain name, and the DNS suffix. Here are the steps to configure the DHCP scope options on SRV1:

? On SRV1, open DNS Manager from the Administrative Tools menu or by typing dnsmgmt.msc in the Run box.

? In the left pane, expand your DHCP server and click on IPv4.

? In the right pane, right-click on the scope that you want to configure and select Properties.

? In the Scope Properties dialog box, click on the DNS tab.

? Check the box Enable DNS dynamic updates according to the settings below. This option allows the DHCP server to register and update the DNS records for the DHCP clients.

? Select the option Always dynamically update DNS records. This option ensures that the DHCP server updates both the A and PTR records for the DHCP clients, regardless of whether they request or support dynamic updates.

? Check the box Discard A and PTR records when lease is deleted. This option allows the DHCP server to delete the DNS records for the DHCP clients when their leases expire or are released.

? Check the box Dynamically update DNS records for DHCP clients that do not request updates. This option allows the DHCP server to update the DNS records for the DHCP clients that do not support dynamic updates, such as legacy or non-Windows clients.

? In the DNS servers section, click on the Add button to add a new DNS server IP address.

? In the Add Server dialog box, enter the IP address of DC1, which is the DNS server that you want to use for the DHCP clients, and click Add.

? Click OK to close the Add Server dialog box and return to the Scope Properties dialog box.

? Click OK to apply the changes and close the Scope Properties dialog box.

Now, all DHCP clients that get an IP address from SRV1 will be configured to use DC1 as a DNS server. You can verify the DNS configuration by using the ipconfig /all command on a DHCP client computer and checking the DNS Servers entry. You can also check the DNS records for the DHCP clients by using the DNS Manager console on DC1.

NEW QUESTION 3

SIMULATION - (Topic 4)

Task 4

You need to register SRV1 to sync Azure file shares The registration must use the 34646045 Storage Sync Service.

The required source files are located in a folder named \\dc1.contoso.com\install.

You do NOT need to configure file share synchronization at this time and you do NOT need to update the agent.

- A. Mastered
- B. Not Mastered

Answer: A

Explanation:

One possible solution to register SRV1 to sync Azure file shares using the 34646045 Storage Sync Service is to use the Register-AzStorageSyncServer cmdlet from the Az.StorageSync module. This cmdlet establishes a trust relationship between the server

and the Storage Sync Service, which is required for creating server endpoints and syncing files. Here are the steps to register SRV1 using the cmdlet:

? On SRV1, open PowerShell as an administrator and run the following command to

install the Az.StorageSync module if it is not already installed: Install-Module -Name Az.StorageSync
 ? Run the following command to import the Az.StorageSync module:
 Import-Module -Name Az.StorageSync
 ? Run the following command to sign in to your Azure account and select the subscription that contains the 34646045 Storage Sync Service:
 Connect-AzAccount
 Select-AzSubscription -SubscriptionId <your-subscription-id>
 ? Run the following command to register SRV1 with the 34646045 Storage Sync Service. You need to specify the resource group name and the Storage Sync Service name as parameters:
 Register-AzStorageSyncServer -ResourceGroupName <your-resource-group-name> -StorageSyncServiceName 34646045
 ? Wait for the registration to complete. You can verify the registration status by checking the Registered servers tab on the Azure portal or by running the following command:
 Get-AzStorageSyncServer -ResourceGroupName <your-resource-group-name> -StorageSyncServiceName 34646045
 Now, SRV1 is registered with the 34646045 Storage Sync Service and ready to sync Azure file shares. You can create server endpoints on SRV1 and cloud endpoints on the Azure file shares to define the sync topology.

NEW QUESTION 4

SIMULATION - (Topic 4)

Task 6

You need to ensure that you can manage DC1 by using Windows Admin Center on SRV1. The required source files are located in a folder named \\dc1.contoso.com\install.

- A. Mastered
- B. Not Mastered

Answer: A

Explanation:

One possible solution to ensure that you can manage DC1 by using Windows Admin Center on SRV1 is to install Windows Admin Center on SRV1 and add DC1 as a managed server. Windows Admin Center is a web-based management tool that allows you to manage servers, clusters, Windows PCs, and Azure virtual machines (VMs) from a single interface. Here are the steps to install Windows Admin Center on SRV1 and add DC1 as a managed server:

? On SRV1, open a web browser and go to the folder named \\dc1.contoso.com\install. Download the Windows Admin Center installer file (WindowsAdminCenter.msi) and save it to a local folder, such as C:\Temp.
 ? Run the Windows Admin Center installer file and follow the installation wizard. You can choose to install Windows Admin Center as a desktop app or as a service. For more information on how to install Windows Admin Center, see Install Windows Admin Center.
 ? After the installation is complete, launch Windows Admin Center from the Start menu or the desktop shortcut. If you installed Windows Admin Center as a service, you can access it from a web browser by using the URL https://localhost:6516 or https://<SRV1>:6516, where <SRV1> is the name or IP address of SRV1.
 ? On the Windows Admin Center dashboard, click Add to add a new connection. Select Server as the connection type and enter the name or IP address of DC1 in the Server name field. Optionally, you can specify the display name, description, and tags for the connection. Click Submit to add DC1 as a managed server.
 ? On the Windows Admin Center dashboard, you should see DC1 listed under the Servers section. Click on DC1 to open the server overview page. From here, you can manage various aspects of DC1, such as roles and features, certificates, devices, events, files, firewall, processes, registry, services, and more. For more information on how to use Windows Admin Center to manage servers, see Manage servers with Windows Admin Center.
 Now, you can manage DC1 by using Windows Admin Center on SRV1. You can also add more servers or other types of connections to Windows Admin Center and manage them from the same interface

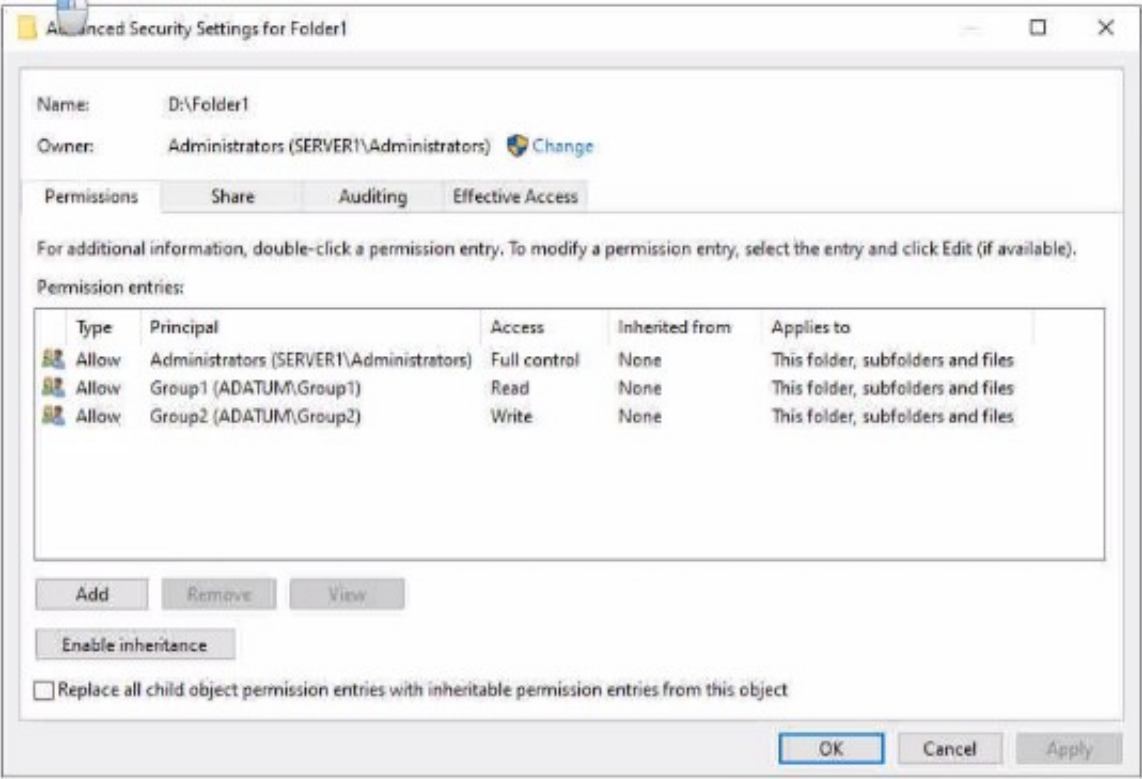
NEW QUESTION 5

HOTSPOT - (Topic 3)

Your network contains an Active Directory Domain Services (AD DS) domain named adatum.com The domain contains a server named Server1 and the users shown in the following table.

Name	Member of
User1	Group1
User2	Group2
User3	Group3

Server1 contains a folder named D:\Folder1. The advanced security settings for Folder 1 are configured as shown in the Permissions exhibit. (Click the Permissions tab.)



Folder1 is shared by using the following configurations

Group	Permission
Group1	Allow - Change
Group3	Allow - Full Control

Path : D:\Folder1
Name : Share1
ShareType : FileSystemDirectory
FolderEnumerationMode : Unrestricted

Answer Area

Statements	Yes	No
User1 can read the files in Share1.	<input type="radio"/>	<input type="radio"/>
User3 can delete files in Share1.	<input type="radio"/>	<input type="radio"/>
If User2 connects to \\Server1.adatum.com from File Explorer,	<input type="radio"/>	<input type="radio"/>

- A. Mastered
- B. Not Mastered

Answer: A

Explanation:

Answer Area

Statements	Yes	No
User1 can read the files in Share1.	<input checked="" type="radio"/>	<input type="radio"/>
User3 can delete files in Share1.	<input checked="" type="radio"/>	<input type="radio"/>
If User2 connects to \\Server1.adatum.com from File Explorer,	<input type="radio"/>	<input checked="" type="radio"/>

NEW QUESTION 6

HOTSPOT - (Topic 3)

You have an Active Directory Domain Services (AD DS) domain that contains a group named Group1. You need to create a group managed service account (gMSA) named Account1. The solution must ensure that Group1 can use Account1. How should you complete the script? To answer, select the appropriate options in the answer area, NOTE: Each correct selection is worth one point.

Answer Area

New-ADServiceAccount
Add-ADComputerServiceAccount
Install-ADServiceAccount
New-ADObject
New-ADServiceAccount

"Account1" -DNSHostName "website.contoso.com" -

-PrincipalsAllowedToDelegateToAccount
AuthenticationPolicy
-Instance
-PrincipalsAllowedToDelegateToAccount
-PrincipalsAllowedToRetrieveManagedPassword

"Group1"

- A. Mastered
- B. Not Mastered

Answer: A

Explanation:

Answer Area

New-ADServiceAccount
Add-ADComputerServiceAccount
Install-ADServiceAccount
New-ADObject
New-ADServiceAccount

"Account1" -DNSHostName "website.contoso.com" -

-PrincipalsAllowedToDelegateToAccount
AuthenticationPolicy
-Instance
-PrincipalsAllowedToDelegateToAccount
-PrincipalsAllowedToRetrieveManagedPassword

"Group1"

NEW QUESTION 7

HOTSPOT - (Topic 3)

You have a Windows Server container host named Server1.

You start the containers on Server1 as shown in the following table.

Name	Image	Uses Hyper-V isolation	Process running on container
Container1	microsoft/iis	No	ProcessA
Container2	microsoft/iis	No	ProcessB
Container3	microsoft/iis	Yes	ProcessC
Container4	microsoft/iis	Yes	ProcessD

You need to validate the status of ProcessA and ProcessC.

Where can you verify that ProcessA and ProcessC are in a running state? To answer, select the appropriate options in the answer area.

NOTE: Each correct selection is worth one point.

Answer Area

ProcessA: All the containers and Server1
Container1 only
Container1 and Container2 only
Container1 and Server1 only
Container1, Container2, and Server1 only
All the containers and Server1

ProcessC: Container3 and Server1 only
Container3 only
Container3 and Container4 only
Container3 and Server1 only
Container3, Container4, and Server1 only
All the containers and Server1

- A. Mastered
- B. Not Mastered

Answer: A

Explanation:

Answer Area

ProcessA: All the containers and Server1

ProcessC: Container3 and Server1 only

NEW QUESTION 8

- (Topic 3)

You have a server that runs Windows Server and contains a shared folder named UserData.

You need to limit the amount of storage space that each user can consume in UserData. What should you use?

- A. Storage Spaces
- B. Work Folders
- C. Distributed File System (DFS) Namespaces
- D. File Server Resource Manager (FSRM)

Answer: D

Explanation:

Reference:

https://docs.microsoft.com/en-us/windows-server/storage/fsrm/fsrm-overview

NEW QUESTION 9

- (Topic 3)

You have an Active Directory Domain Services (AD DS) domain. The domain contains three servers named Server 1, Server2, and Server3 that run Windows Server.

You sign in to Server1 by using a domain account and start a remote PowerShell session to Server2. From the remote PowerShell session, you attempt to access a resource on Server3. but access to the resource is denied.

You need to ensure that your credentials are passed from Server1 to Server3. The solution must minimize administrative effort. What should you do?

- A. Configure Kerberos constrained delegation.
- B. Configure Just Enough Administration (JEA).
- C. Configure selective authentication for the domain.

D. Disable the Enforce user logon restrictions policy setting for the domain.

Answer: A

NEW QUESTION 10

HOTSPOT - (Topic 3)

Your network contains an on-premises Active Directory Domain Services (AD DS) domain named contoso.com that syncs with an Azure AD tenant. The tenant contains a group named Group1 and the users shown in the following table.

Name	In organizational unit (OU)
User1	OU1
User2	OU2

Domain/OU filtering in Azure AD Connect is configured as shown in the Filtering exhibit. (Click the Filtering tab.)

Microsoft Azure Active Directory Connect

Domain and OU filtering

Directory: contoso.com Refresh Domains ?

☐ Sync all domains and OUs
☒ Sync selected domains and OUs

☒ contoso.com

- ☐ Builtin
- ☐ Computers
- ☐ Domain Controllers
- ☐ ForeignSecurityPrincipals
- ☐ Infrastructure
- ☐ LostAndFound
- ☐ Managed Service Accounts
- ☒ OU1
- ☐ OU2
- ☐ Program Data
- ☐ System
- ☒ Users

Previous Next

You review the Azure AD Connect configurations as shown in the Configure exhibit. (Click the Configure tab.)

Microsoft Azure Active Directory Connect

Ready to configure

Once you click install, we will do the following:

- Configure synchronization services on this computer
- Install Microsoft Azure AD Connect Authentication Agent for Pass-Through Authentication
- Enable Pass-through authentication
- Configure Source Anchor Attribute
- Configure sk220630outlook.onmicrosoft.com - AAD Connector
- Configure contoso.com Connector
- Disable Password hash synchronization
- Enable Password writeback
- Enable Azure AD Export Deletion Threshold (500)

☒ Start the synchronization process when configuration completes.
☐ Enable staging mode: When selected, synchronization will not export any data to AD or Azure AD.

Previous Install

For each of the following statements, select Yes if the statement is true. Otherwise, select No. NOTE: Each correct selection is worth one point.

Answer Area

Statements	Yes	No
User1 can use self-service password reset (SSPR) to reset his password.	<input type="radio"/>	<input type="radio"/>
If User1 connects to Microsoft Exchange Online, an on-premises domain controller provides authentication.	<input type="radio"/>	<input type="radio"/>
You can add User2 to Group1 as a member.	<input type="radio"/>	<input type="radio"/>

- A. Mastered
B. Not Mastered

Answer: A

Explanation:

Answer Area

Statements	Yes	No
User1 can use self-service password reset (SSPR) to reset his password.	<input type="radio"/>	<input checked="" type="radio"/>
If User1 connects to Microsoft Exchange Online, an on-premises domain controller provides authentication.	<input type="radio"/>	<input checked="" type="radio"/>
You can add User2 to Group1 as a member.	<input type="radio"/>	<input checked="" type="radio"/>

NEW QUESTION 10

- (Topic 3)

Your network contains an Active Directory Domain Services (AD DS) domain- The domain contains 10 servers that run Windows Server. The servers have static IP addresses.

You plan to use DHCP to assign IP addresses to the servers.

You need to ensure that each server always receives the same IP address.

Which type of identifier should you use to create a DHCP reservation for each server?

- A. universally unique identifier (UUID)
B. fully qualified domain name (FQDN)
C. NetBIOS name
D. MAC address

Answer: D

Explanation:

Reference:

<https://docs.microsoft.com/en-us/powershell/module/dhcpserver/add-dhcpserverv4reservation?view=windowsserver2022-ps>

NEW QUESTION 13

- (Topic 3)

You have an Azure virtual machine named VM1 that runs Windows Server and has the following configurations:

? Size: D2s_v4

? Operating system disk: 127-GiB standard SSD

? Data disk 128-GiB standard SSD

? Virtual machine generation: Gen 2

You plan to perform the following changes to VM1:

? Change the virtual machine size to D4s_v4.

? Detach the data disk.

? Add a new standard SSD.

Which changes require downtime for VM1?

- A. Detaching the data disk only and adding a new standard SSD.
B. Detaching the data disk only.
C. Changing the virtual machine size only.
D. Adding a new standard SSD only.

Answer: C

Explanation:

Data disks can be added and detached without requiring downtime. Changing the VM size requires the VM to be restarted.

NEW QUESTION 14

- (Topic 3)

Your network contains an Active Directory Domain Services (AD DS) forest. The forest contains three Active Directory sites named Site1, Site2, and Site3. Each site contains two domain controllers. The sites are connected by using DEFAULTIPSITELINK.

You open a new branch office that contains only client computers.

You need to ensure that the client computers in the new office are primarily authenticated by the domain controllers in Site1.

Solution: You create a new subnet object that is associated to Site1. Does this meet the goal?

- A. Yes

B. No

Answer: B

NEW QUESTION 18

- (Topic 3)

Your network contains an on-premises Active Directory Domain Services (AD DS) domain named contoso.com. The domain contains three servers that run Windows Server and have the Hyper-V server role installed. Each server has a Switch Embedded Teaming (SET) team.

You need to verify that Remote Direct Memory Access (RDMA) and required Windows Server settings are configured properly on each server to support a failover cluster.

What should you use?

- A. the validate-DCB cmdlet
- B. Server Manager
- C. the Get-NetAdapter cmdlet
- D. Failover Cluster Manager

Answer: A

NEW QUESTION 22

- (Topic 3)

Your network contains a DHCP server.

You plan to add a new subnet and deploy Windows Server to the subnet. You need to use the server as a DHCP relay agent.

Which role should you install on the server?

- A. Network Policy and Access Services
- B. Remote Access
- C. Network Controller
- D. DHCP Server

Answer: B

NEW QUESTION 26

- (Topic 3)

You have an Azure virtual machine named VM1 that runs Windows Server. You have an Azure subscription that has Microsoft Defender for Cloud enabled.

You need to ensure that you can use the Azure Policy guest configuration feature to manage VM1.

What should you do?

- A. Add the PowerShell Desired State Configuration (DSC) extension to VM1.
- B. Configure VM1 to use a user-assigned managed identity.
- C. Configure VM1 to use a system-assigned managed identity.
- D. Add the Custom Script Extension to VM1.

Answer: C

Explanation:

Reference:

<https://docs.microsoft.com/en-us/azure/virtual-machines/extensions/guest-configuration>

NEW QUESTION 30

HOTSPOT - (Topic 3)

Your company has offices in Boston and Montreal. The offices are connected by using a 10-Mbps WAN link that is often saturated. The office in Boston contains the following:

- An Active Directory Domain Services (AD DS) domain controller named DC1.
- A server named Server1 that runs Windows Server and has the File Server role installed. The office in Montreal contains 20 client computers that run Windows 10.

Montreal does NOT have any servers.

The company plans to deploy a new line of business (LOB) application to all the client computers. The installation source files for the application are in \\Server\Apps.

Answer Area

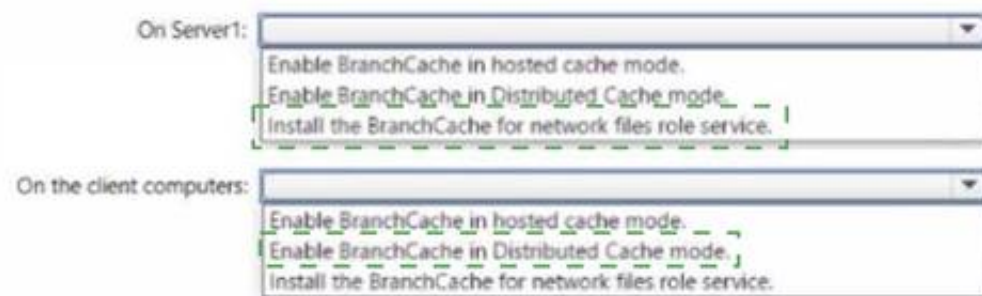
On Server1:	<div>▼</div> <div>Enable BranchCache in hosted cache mode. Enable BranchCache in Distributed Cache mode. Install the BranchCache for network files role service.</div>
On the client computers:	<div>▼</div> <div>Enable BranchCache in hosted cache mode. Enable BranchCache in Distributed Cache mode. Install the BranchCache for network files role service.</div>

- A. Mastered
- B. Not Mastered

Answer: A

Explanation:

Answer Area



NEW QUESTION 32

- (Topic 3)

Your network contains a single-domain Active Directory Domain Services (AD DS) forest named conto.com. The forest contains the servers shown in the following exhibit table.

Name	Description
DC1	Domain controller
Server1	Member server

You plan to install a line-of-business (LOB) application on Server1. The application will install a custom windows services.

A new corporate security policy states that all custom Windows services must run under the context of a group managed service account (gMSA). You deploy a root key.

You need to create, configure, and install the gMSA that will be used by the new application.

Which two actions should you perform? Each correct answer presents part of the solution. NOTE: Each correct selection is worth one point.

- A. On Server1, run the install-ADServiceAccount cmdlet.
- B. On DC1, run the New-ADServiceAccount cmdlet.
- C. On DC1, run the Set_ADComputer cmdlet.
- D. ON DC1, run the Install-ADServiceAccount cmdlet.
- E. On Server1, run the Get-ADServiceAccount cmdlet.

Answer: AB

NEW QUESTION 34

- (Topic 3)

You have an Azure virtual machine named Server1 that runs a network management application. Server1 has the following network configuration.

- * Network interface.Nic1
- * IP address 10.1.1.1/24
- * Connected to: Vnet1/Subnet1

You need connect Server1 to an additional subnet named Vnet1/Subnet2. What should you do?

- A. Create a private endpoint on Subnet2
- B. Add a network interface to server1.
- C. Modify the IP configurations of Nic1.
- D. Add an IP configuration to Nic1.

Answer: B

NEW QUESTION 38

- (Topic 3)

You have an on-premises Active Directory Domain Services (AD DS) domain named contoso.com that syncs with Azure AD by using A2zure AD Connect.

You enable password protection for contoso.com.

You need to prevent users from including the word Contoso as part of their password. What should you use?

- A. the Azure Active Directory admin center
- B. Active Directory Users and Computers
- C. Synchronization Service Manager
- D. Windows Admin Center

Answer: D

NEW QUESTION 42

- (Topic 3)

You have an Azure subscription. The subscription contains a virtual machine named VM1 that runs Windows Server.

You build an app named App1.

You need to configure continuous integration and continuous deployment (CI/CD) of App1 to VM1.

What should you create first?

- A. a managed identity
- B. an App Service Environment
- C. an Azure Automation account
- D. an Azure DevOps organization

Answer: D

NEW QUESTION 44

DRAG DROP - (Topic 3)

You create a new Azure subscription.

You plan to deploy Azure Active Directory Domain Services (Azure AD DS) and Azure virtual machines.

You need to ensure that the virtual machines can join Azure AD DS.

Which three actions should perform in sequence? To answer, move the appropriate actions from the list of action of the answer area and arrange them in the correct order.

Actions

Run the Active Directory Domain Services Installation Wizard.

Create an Azure virtual network.

Install the Active Directory Domain Services role.

Install Azure AD Connect.

Modify the settings of the Azure virtual network.

Create an Azure AD DS instance.

>

<

Answer Area

>

<

- A. Mastered
- B. Not Mastered

Answer: A

Explanation:

Actions

Run the Active Directory Domain Services Installation Wizard.

Create an Azure virtual network.

Install the Active Directory Domain Services role.

Install Azure AD Connect.

Modify the settings of the Azure virtual network.

Create an Azure AD DS instance.

>

<

Answer Area

Create an Azure virtual network.

Create an Azure AD DS instance.

Modify the settings of the Azure virtual network.

>

<

NEW QUESTION 48

- (Topic 3)

You have an Azure virtual machine named VM1 that runs Windows Server.

You need to ensure that administrators request access to VM1 before establishing a Remote Desktop connection.

What should you configure?

- A. Azure Front Door
- B. Microsoft Defender for Cloud
- C. Azure AD Privileged Identity Management (PIM)
- D. a network security group (NSG)

Answer: B

NEW QUESTION 49

DRAG DROP - (Topic 3)

Your network contains an Active Directory domain named contoso.com. The domain contains group managed service accounts (gMSAs). You have a server named Server1 that runs Windows Server and is in a workgroup. Server! hosts Windows containers.

You need to ensure that the Windows containers can authenticate to contoso.com. Which three actions should you perform in sequence? To answer, move the appropriate

actions from the list of actions to the answer area and arrange them in the correct order.

Actions

On Server1, install and run ccg.exe.

On Server1, run New-CredentialSpec.

In contoso.com, generate a Key Distribution Service (KDS) root key.

In contoso.com, create a gMSA and a standard user account.

From a domain-joined computer, create a credential spec file and copy the file to Server1.

>

<

Answer Area

>

<

- A. Mastered
- B. Not Mastered

Answer: A

Explanation:

Actions

On Server1, install and run ccg.exe.
On Server1, run New-CredentialSpec.
In contoso.com, generate a Key Distribution Service (KDS) root key.
In contoso.com, create a gMSA and a standard user account.
From a domain-joined computer, create a credential spec file and copy the file to Server1.

Answer Area

In contoso.com, generate a Key Distribution Service (KDS) root key.
In contoso.com, create a gMSA and a standard user account.
From a domain-joined computer, create a credential spec file and copy the file to Server1.

NEW QUESTION 51

DRAG DROP - (Topic 3)

You create an Azure virtual machine named Server1 that runs Windows Server. Server1 has the disk configuration shown in the following exhibit.

Disk Management

File Action View Help

Volume

Layout

Type

File System

Status

Capacity

Free Spa...

% Free

System Reserved

Simple

Basic

NTFS

Healthy (S...

500 MB

465 MB

93 %

Temporary Storag...

Simple

Basic

NTFS

Healthy (P...

8.00 GB

7.28 GB

91 %

Actions

Shut down Server1.
Start Server1.
Create and attach a new data disk.
Create a new simple volume.
Create a new spanned volume.
Initialize the disk.

Answer Area

- A. Mastered
- B. Not Mastered

Answer: A

Explanation:

Actions

Shut down Server1.
Start Server1.
Create and attach a new data disk.
Create a new simple volume.
Create a new spanned volume.
Initialize the disk.

Answer Area

Start Server1.
Create and attach a new data disk.
Shut down Server1.

NEW QUESTION 52

HOTSPOT - (Topic 3)

You have a Windows Server container host named Server1 and an Azure subscription. You deploy an Azure container registry named Registry1 to the subscription.

On Server1, you create a container image named image1. You need to store imager in Registry1.

Which command should you run on Server1 ? To answer, select the appropriate options in the answer area.

NOTE: Each correct selection is worth one point.

Answer Area

docker
azcopy
xcopy
git

export
import
pull
push

Registry1.Azurecr.io /image1

- A. Mastered
- B. Not Mastered

Answer: A

Explanation:

Passing Certification Exams Made Easy

visit - https://www.2PassEasy.com

Answer Area



NEW QUESTION 57

- (Topic 3)

You have an Azure virtual machine named VM1 that runs Windows Server. You perform the following actions on VM1:

- Create a folder named Folder1 on volume C
- Create a folder named Folder2 on volume D.
- Add a new data disk to VM1 and create a new volume that is assigned drive letter E.
- Install an app named App1 on volume E. You plan to resize VM1.

Which objects will present after you resize VM1?

- A. Folder1 and Folder2 only
- B. Folder1, volume E, and App1 only
- C. Folder1 only
- D. Folder1 and App1 only
- E. Folder2, App1, and volume E

Answer: D

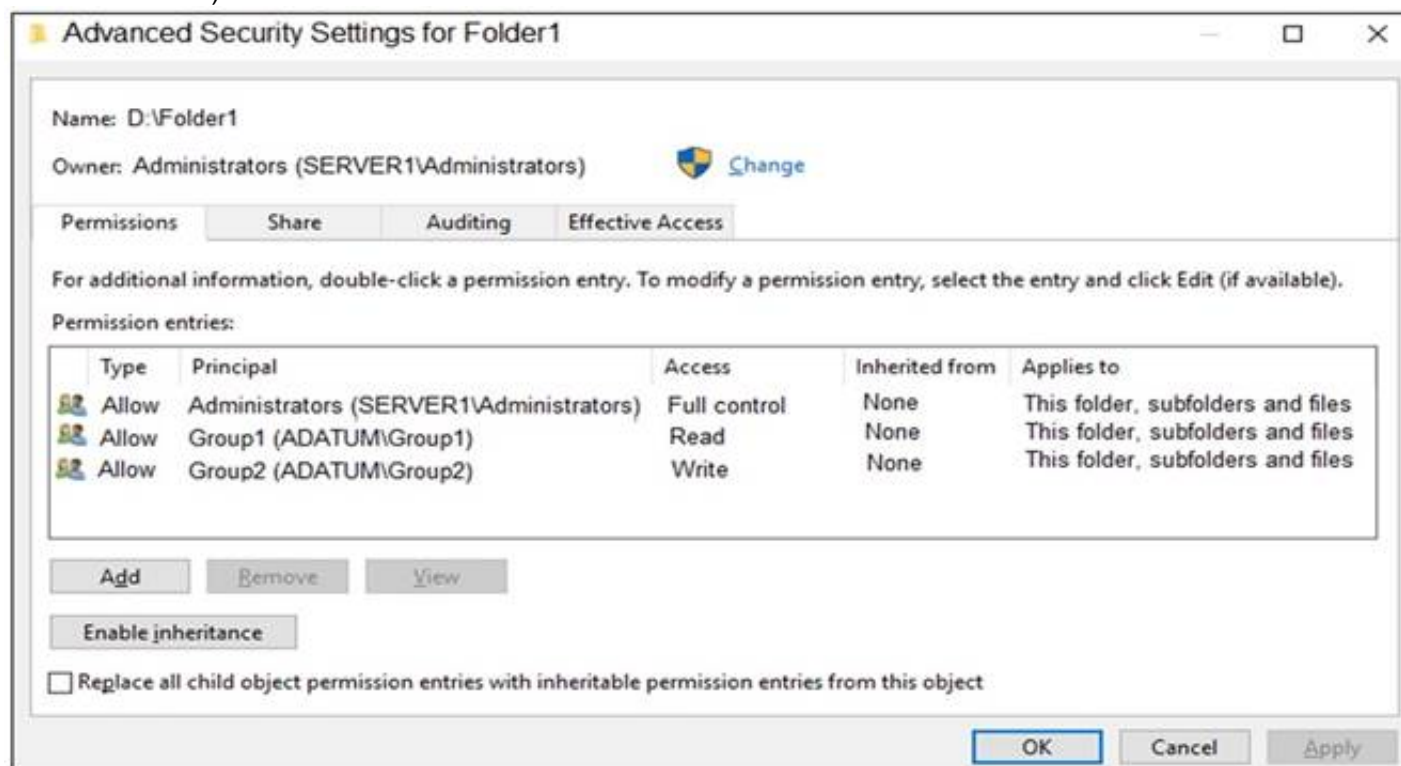
NEW QUESTION 60

HOTSPOT - (Topic 3)

Your network contains an Active Directory Domain Services (AD DS) domain named adatum.com. The domain contains a server named Server1 and the users shown in the following table.

Name	Member of
User1	Group1
User2	Group2
User3	Group3

Server1 contains a folder named D:\Folder1. The advanced security settings for Folder1 are configured as shown in the Permissions exhibit. (Click the Permissions tab.)



Folder1 is shared by using the following configurations:

```
Path : D:\Folder1
Name : Share1
ShareType : FileSystemDirectory
FolderEnumerationMode : Unrestricted
```

The share permissions for Share1 are shown in the following table.

Group	Permission
Group1	Allow – Change
Group3	Allow – Full Control

For each of the following statements, select Yes if the statement is true. Otherwise, select No.
 NOTE: Each correct selection is worth one point.

Statements

Yes

No

User1 can read the files in Share1.

☐
☐

User3 can delete files in Share1.

☐
☐

If User2 connects to \\Server1.adatum.com from File Explorer, Share1 will be listed.

☐
☐

- A. Mastered
- B. Not Mastered

Answer: A

Explanation:

To access files in a shared folder, you need to be granted permissions on the folder (NTFS permissions) AND permissions on the share. The most restrictive permission of the folder permissions and share permissions apply.

Box 1: Yes

Group1 has Read access to Folder1 and Change access to Share1. Therefore, User1 can read the files in Share1.

Box 2: No

Group3 has Full Control access to Share1. However, Group3 has no permissions configured Folder1. Therefore, User3 cannot access the files in Share1.

Box 3: Yes

Group2 has write permission to Folder1. However, Group2 has no permission on Share1. Therefore, users in Group2 cannot access files in the shared folder. Access Based Enumeration when enabled hides files and folders that users do not have permission to access. However, Access Based Enumeration is not enabled on Share1.

This is indicated by the FolderEnumerationMode – Unrestricted setting. Therefore, the share will be visible to User2 even though User2 cannot access the shared folder.

NEW QUESTION 65

- (Topic 3)

You have a server that runs Windows Server and has the DHCP Server role installed. The server has a scope named Scope1 that has the following configurations:

- Address range: 192.168.0.2 to 192.168.1.2M . Mask 255.255.254.0
- Router: 192.168.0.1
- Lease duration: 3 days
- DNS server 172.16.0.254

You have 50 Microsoft Teams Phone devices from the same vendor. All the devices have MAC addresses within the same range.

You need to ensure that all the Teams Phone devices that receive a lease from Scope1 have IP addresses in the range of 192.168.1.100 to 192.168.1.200. The solution must NOT affect other DHCP clients that receive IP configurations from Scope1.

What should you create?

- A. a policy
- B. a scope
- C. a fitter
- D. scope options

Answer: A

Explanation:

Reference:

[https://docs.microsoft.com/en-us/previous-versions/windows/it-pro/windows-server-2012-R2-and-2012/dn425040\(v=ws.11\)](https://docs.microsoft.com/en-us/previous-versions/windows/it-pro/windows-server-2012-R2-and-2012/dn425040(v=ws.11))

NEW QUESTION 68

HOTSPOT - (Topic 3)

Your network contains an Active Directory Domain Services (AD DS) domain named contoso.com. The domain contains a server named Server1 that has the DFS Namespaces role service installed. Server1 hosts a domain-based Distributed File System (DFS) Namespace named Files.

The domain contains a file server named Server2. Server2 contains a shared folder named Share1. Share1 contains a subfolder named Folder 1.

In the Files namespace, you create a folder named Folder1 that has a target of

\\Server2.contoso.com\Share1\Folder1.

You need to configure a logon script that will map drive letter M to Folder1. The solution must use the path of the DFS Namespace.

How should you complete the command to map the drive letter? To answer, select the appropriate options in the answer area.

NOTE: Each correct selection is worth one point.

Answer Area



- A. Mastered
- B. Not Mastered

Answer: A

Explanation:

Answer Area



NEW QUESTION 69

- (Topic 3)

You have an Azure subscription that contains the following resources:

- An Azure Log Analytics workspace
- An Azure Automation account
- Azure Arc.

You have an on-premises server named Server1 that is onboarded to Azure Arc. You need to manage Microsoft updates on Server1 by using Azure Arc. Which two actions should you perform? Each correct answer presents part of the solution. NOTE: Each correct selection is worth one point.

- A. Add Microsoft Sentinel to the Log Analytics workspace
- B. On Server1, install the Azure Monitor agent
- C. From the Automation account, enable Update Management for Server1.
- D. From the Virtual machines data source of the Log Analytics workspace, connect Server1.

Answer: BC

Explanation:

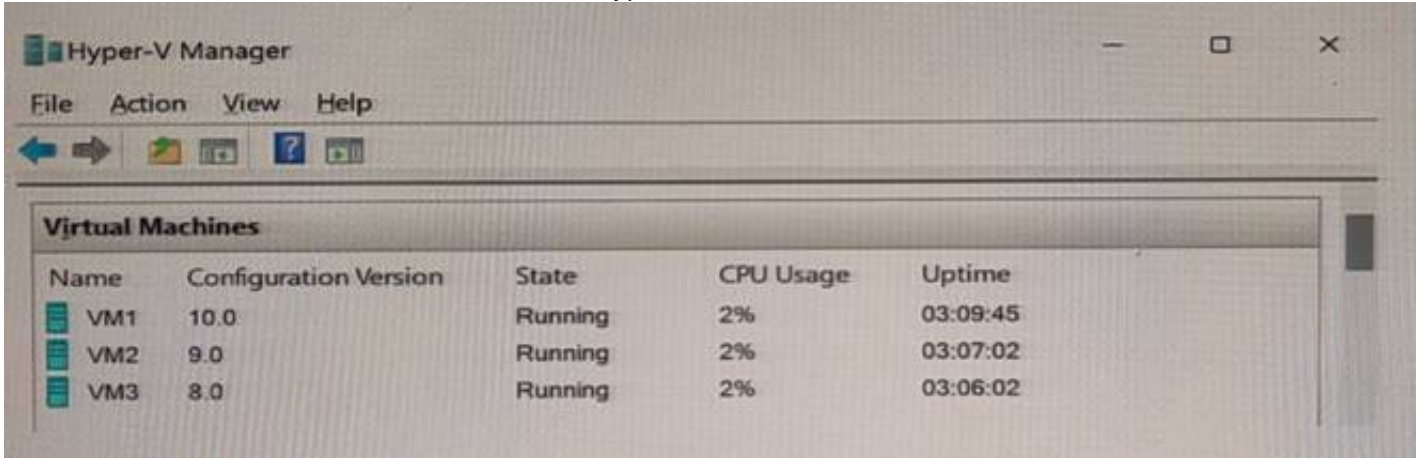
Reference:

https://docs.microsoft.com/en-us/azure/cloud-adoption-framework/manage/hybrid/server/best-practices/arc-update-management

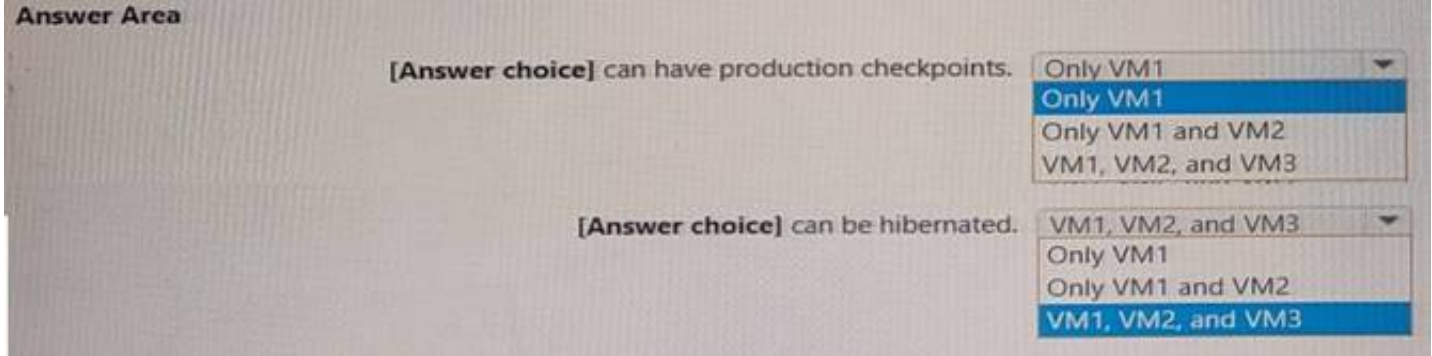
NEW QUESTION 73

HOTSPOT - (Topic 3)

You have a server named Server1 that has the Hyper-V server role installed. Server1 hosts the virtual machines shown in the following exhibit.



Use the drop-down menus to select the answer choice that completes each statement based on the information presented in the graphic. NOTE: Each correct selection is worth one point.



- A. Mastered
- B. Not Mastered

Answer: A

Explanation:

Answer Area

[Answer choice] can have production checkpoints.

- Only VM1
- Only VM1 and VM2
- VM1, VM2, and VM3

[Answer choice] can be hibernated.

- VM1, VM2, and VM3
- Only VM1
- Only VM1 and VM2
- VM1, VM2, and VM3

NEW QUESTION 74

HOTSPOT - (Topic 3)

Your network contains an Active Directory Domain Services (AD DS) domain named contoso.com.

The network contains the servers shown in the following table.

Name	Role	Domain/workgroup	Operating system
DC1	Active Directory Domain Services, DNS Server	contoso.com	Windows Server
Server1	DHCP Server	contoso.com	Windows Server
Server2	None	contoso.com	Windows Server Core
Server3	None	Workgroup1	Windows Server Core

You plan to implement IP Address Management (IPAM).

You need to use the Group Policy based provisioning method for managed servers. The solution must support server discovery.

What should you do? To answer, select the appropriate options in the answer area. NOTE: Each correct selection is worth one point.

Answer Area

Server on which to deploy the IPAM server role:

- Server2
- DC1
- Server1
- Server2
- Server3

Servers that must be provisioned for IPAM:

- DC1 and Server1
- DC1 and Server3
- Server1 and Server2
- Server2 and Server3

- A. Mastered
- B. Not Mastered

Answer: A

Explanation:

Answer Area

Server on which to deploy the IPAM server role: Server2

Servers that must be provisioned for IPAM: DC1 and Server1

NEW QUESTION 78

- (Topic 3)

You have an on-premises server named Server1 that runs Windows Server. You have an Azure virtual network that contains an Azure virtual network gateway.

You need to connect only Server1 to the Azure virtual network. What should you use?

- A. Azure Network Adapter
- B. a Site-to-Site VPN
- C. an ExpressRoute circuit
- D. Azure Extended Network

Answer: B

Explanation:

Reference:

<https://docs.microsoft.com/en-us/windows-server/manage/windows-admin-center/azure/use-azure-network-adapter>

NEW QUESTION 83

- (Topic 3)

You have an Azure virtual machine named Served that runs a network management application. Server1 has the following network configurations:

- Network interface: Nic1
- IP address. 10.1.1.1/24
- Connected to: VnetVSubnet1

You need to connect Server1 to an additional subnet named Vnet1/Subnet2. What should you do?

- A. Modify the IP configurations of Nic1.
- B. Add a network interface to Server1.
- C. Add an IP configuration to Nic1.
- D. Create a private endpoint on Subnet2

Answer: D

NEW QUESTION 85

- (Topic 3)

You have an on-premises network that is connected to an Azure virtual network by using a Site-to-Site VPN. Each network contains a subnet that has the same IP address space. The on-premises subnet contains a virtual machine. You plan to migrate the virtual machine to the Azure subnet. You need to migrate the on premises virtual machine to Azure without modifying the IP address. The solution must minim administrative effort. What should you implement before you perform the migration?

- A. Azure Extended Network
- B. Azure Virtual Network NAT
- C. Azure Application Gateway
- D. Azure virtual network peering

Answer: A

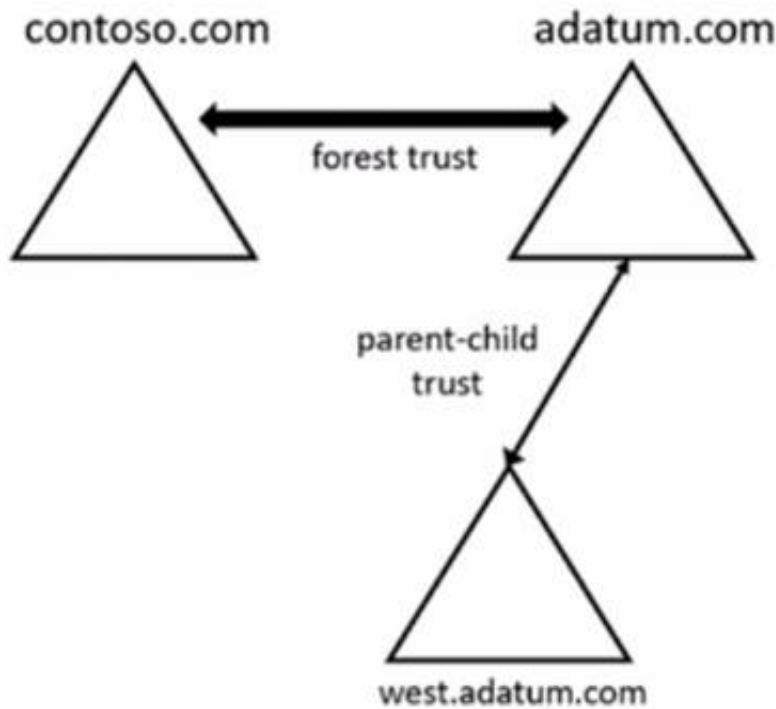
Explanation:

Reference:
<https://docs.microsoft.com/en-us/windows-server/manage/windows-admin-center/azure/azure-extended-network>

NEW QUESTION 90

HOTSPOT - (Topic 3)

Your network contains two Active Directory Domain Services (AD DS) forests as shown in the following exhibit.



The forests contain the domain controllers shown in the following table.

Name	Domain	Global catalog	Schema master
DC1	adatum.com	Yes	Yes
DC2	adatum.com	No	No
DC3	west.adatum.com	Yes	No
DC4	contoso.com	Yes	Yes

You perform the following actions on DO:

- Create a user named User1.
- Extend the schema with a new attribute named Attributed

To which domain controllers are User1 and Attribute1 replicated? To answer, select the appropriate options in the answer area.
NOTE: Each correct selection is worth one point.

Answer Area

User1:

DC2 only

DC2 only

DC3 only

DC2 and DC3 only

DC3 and DC4 only

DC2, DC3, and DC4

Attribute1:

DC2, DC3, and DC4

DC2 only

DC4 only

DC2 and DC3 only

DC2, DC3, and DC4

Answer:

Answer Area

User1:

Attribute1:

- A. Mastered
- B. Not Mastered

Answer: A

NEW QUESTION 93

- (Topic 3)

Your network contains an Active Directory Domain Services (AD DS) domain.

You have a Group Policy Object (GPO) named GPO1 that contains Group Policy preferences.

You plan to link GPO1 to the domain.

You need to ensure that the preference in GPO1 apply only to domain member servers and NOT to domain controllers or client computers. All the other Group Policy settings in GPO1 must apply to all the computers. The solution must minimize administrative effort.

Which type of item level targeting should you use?

- A. Domain
- B. Operating System
- C. Security Group
- D. Environment Variable

Answer: B

Explanation:

Reference:

https://docs.microsoft.com/en-us/previous-versions/windows/it-pro/windows-server-2012-r2-and-2012/dn789189(v=ws.11)#operating-system-targeting

NEW QUESTION 98

HOTSPOT - (Topic 3)

You have an Active Directory Domain Services (AD DS) domain that contains the member servers shown in the following table.

Name	Operating system	Data Deduplication role service
Server1	Windows Server 2019	Installed
Server2	Windows Server 2022	Not installed
Server3	Windows Server 2022	Installed

Server3 contains a data disk named Disk1 that has Data Deduplication installed. Disk1 contains the files shown in the following table.

Name	Size
File1.txt	5 KB
File2.docx	800 KB
File3.sys	2 MB
File4.bmp	5 GB

Server3 fails.

You need to recover the files on Disk1.

Which files can you recover if you attach Disk1 to Server 1, and which files can you recover if you attach Disk1 to Server2? To answer, select the appropriate options in the answer area.

NOTE: Each correct selection is worth one point.

Answer Area

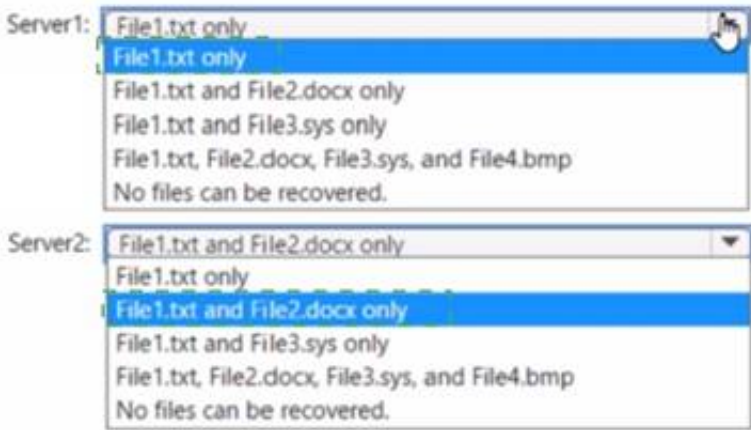
Server1:

Server2:

- A. Mastered
- B. Not Mastered

Answer: A

Explanation:
Answer Area



NEW QUESTION 102

HOTSPOT - (Topic 3)

You need to sync files from an on premises server named Server1 to Azure by using Azure File Sync. You have a cloud tiering policy that is configured for 30 percent free space and 70 days. Volume E on Server1 is 500 GB. A year ago, you configured E:\Data on Server1 to sync by using Azure File Sync. The files that are visible in E:\Data are shown in the following table.

Name	Size	Last accessed
File1	200 GB	2 days ago
File2	100 GB	10 days ago
File3	200 GB	60 days ago
File4	50 GB	100 days ago

Volume E does NOT contain any other files. Where are File1 and File3 located? To answer, select the appropriate options in the answer area. NOTE: Each correct selection is worth one point.

File1:

Server1 only

The Azure file share only

Server1 and the Azure file share

File3:

Server1 only

The Azure file share only

Server1 and the Azure file share

- A. Mastered
- B. Not Mastered

Answer: A

Explanation:

File1:

Server1 only

The Azure file share only

Server1 and the Azure file share

File3:

Server1 only

The Azure file share only

Server1 and the Azure file share

NEW QUESTION 106
HOTSPOT - (Topic 3)

You need to sync files from an on-premises server named Server1 to Azure by using Azure File Sync. You have a cloud tiering policy that is configured for 30 percent free space and 70 days. Volume f on Server1 is 500 GB. A year ago, you configured E:\Oata on Server1 to sync by using Azure File Sync. The files that are visible in E:\Data are shown in the following table.

Name	Size	Last accessed
File1	200 GB	2 days ago
File2	100 GB	10 days ago
File3	200 GB	60 days ago
File4	50 GB	100 days ago

Volume E does NOT contain any other files. Where are File1 and flle3 located? To answer, select the appropriate options In the answer area.

Answer Area

File1:

Server1 only

The Azure file share only

Server1 and the Azure file share

File3:

Server1 only

The Azure file share only

Server 1 and the Azure file share

- A. Mastered
- B. Not Mastered

Answer: A

Explanation:

Answer Area

File1:

Server1 only

The Azure file share only

Server1 and the Azure file share

File3:

Server1 only

The Azure file share only

Server 1 and the Azure file share

NEW QUESTION 108
- (Topic 3)

You have two servers that have the Hyper-V server role installed. The servers are joined to a failover cluster both servers can connect to the same disk on an iSCSI storage device. You plan to use the iSCSI storage to store highly available Hyper-V virtual machines that will support live migration functionality. You need to configure a storage resource in the failover cluster to store the virtual machines. What should you configure?

- A. a storage pool
- B. attributed File System (DFS) Replication
- C. a mirrored volume
- D. Cluster Shared volumes (CSV)

Answer: D

NEW QUESTION 111
HOTSPOT - (Topic 3)

Your network contains two VLANs for client computers and one VLAN for a datacenter. Each VLAN is assigned an IPv4 subnet. Currently, all the client computers use static IP addresses. You plan to deploy a DHCP server to the VLAN in the datacenter. You need to use the DHCP server to provide IP configurations to all the client computers. What is the minimum number of scopes and DHCP relays you should create? To answer, select the appropriate options in the answer area. NOTE: Each correct selection is worth one point.

Answer Area

DHCP scopes:

1

2

3

4

DHCP relays:

1

2

3

4

the selections for DHCP relays

- A. Mastered
- B. Not Mastered

Answer: A

Explanation:

Box 1: 3
You need a DHCP scope for each of the three subnets.
Box 2: 2
The two client VLANs need a DHCP Relay Agent to forward DHCP requests to the DHCP server. The datacenter VLAN that contains the DHCP server does not require a DHCP Relay Agent.

NEW QUESTION 114

- (Topic 3)
Your network contains a multi-site Active Directory Domain Services (AD DS) forest. Each Active Directory site is connected by using manually configured site links and automatically generated connections. You need to minimize the convergence time for changes to Active Directory. What should you do?

- A. For each site link, modify the options attribute.
- B. For each site link, modify the site link costs.
- C. For each site link, modify the replication schedule.
- D. Create a site link bridge that contains all the site links.

Answer: C

Explanation:

Reference:
https://docs.microsoft.com/en-us/windows-server/identity/ad-ds/plan/determining-the- interval

NEW QUESTION 116

DRAG DROP - (Topic 3)
You have an Azure subscription. The subscription contains a virtual machine named VM1 that runs Windows Server. VM1 contains a 128-GB operating system disk. You need to increase the size of volume C on VM1 to 250 GB. Which four actions should you perform in sequence? To answer, move the appropriate actions from the list of actions to the answer area and arrange them in the correct order.

Actions

Resize VM1.

Redeploy VM1.

Stop VM1.

Resize the operating system disk.

Start VM1.

Resize volume C.

Answer Area

>

<

↑

↓

- A. Mastered
- B. Not Mastered

Answer: A

Explanation:

Actions

Resize VM1.

Redeploy VM1.

Stop VM1.

Resize the operating system disk.

Start VM1.

Resize volume C.

Answer Area

Stop VM1.

Resize the operating system disk.

Start VM1.

Resize volume C.

>

<

↑

↓

NEW QUESTION 118

- (Topic 3)

Your on-premises network contains an Active Directory domain named contoso.com. You have an Azure AD tenant. You plan to sync contoso.com with the Azure AD tenant by using Azure AD Connect cloud sync. You need to create an account that will be used by Azure AD Connect cloud sync. Which type of account should you create?

- A. system-assigned managed identity
- B. group managed service account (gMSA)
- C. user
- D. InetOrgPerson

Answer: C

NEW QUESTION 119

- (Topic 3)

You have servers that run Windows Server 2022 as shown in the following table.

Name	Location	Description
Server1	On-premises	Hosts a Microsoft SQL Server 2019 instance
Server2	Azure	Contains the .NET SDK

Server2 contains a .NET app named App1.

You need to establish a WebSocket connection from App1 to the SQL Server instance on Server1. The solution must meet the following requirements:

- Minimize the number of network ports that must be open on the on-premises network firewall.
- Minimize administrative effort. What should you create first?

- A. an Azure Relay namespace
- B. an Azure VPN gateway
- C. a WFC relay connection
- D. a hybrid connection

Answer: D

NEW QUESTION 124

HOTSPOT - (Topic 3)

Your network contains a two-domain on-premises Active Directory Domain Services (AD DS) forest named Contoso.com. The forest contains the domain controllers shown in the following table.

Name	Description	Domain	Active Directory site
DC1	Forest-wide and domain-wide FSMO role holder	contoso.com	Hub
DC2	Domain-wide FSMO role holder	child.contoso.com	Site1
RODC3	Read-only domain controller (RODC)	contoso.com	Site2

You create an Active Directory site named Site3. Site1, Site2 and Site3 each has a dedicated site link to the Hub site.

In Site3, you install a new server named Server1.

You need to promote Server1 to an ROOC in child.contoso.com by using the install from Media (IFM) option. The solution must minimize network traffic.

What should you do? To answer select the appropriate options in the answer area. NOTE: Each correct selection is worth one point.

Answer Area

Server to use to create the IFM source:

Tool to use to create the IFM source:

- A. Mastered
- B. Not Mastered

Answer: A

Explanation:

Answer Area

Server to use to create the IFM source:

DC1
DC2
Server1
RODC3

Tool to use to create the IFM source:

Azure Backup
Dcdiag.exe
Ntdsutil.exe
Repadmin.exe
Windows Server Backup

NEW QUESTION 129

- (Topic 3)

You have an Azure Active Directory Domain Services (Azure AD DS) domain named contoso.com.

You need to provide an administrator with the ability to manage Group Policy Objects (GPOs). The solution must use the principle of least privilege.

To which group should you add the administrator?

- A. AAD DC Administrators
- B. Domain Admins
- C. Schema Admins
- D. Enterprise Admins
- E. Group Policy Creator Owners

Answer: B

Explanation:

Only the Domain Admins group and the Enterprise Admins group can fully manage GPOs. Members of the Group Policy Creator Owners group can create new GPOs but they can't link the GPOs to sites, the domain or OUs and they cannot manage existing GPOs.

NEW QUESTION 133

- (Topic 3)

Your network contains an Active Directory forest. The forest contains two domains named contoso.com and east.contoso.com and the servers shown in the following table.

Name	Domain	Configuration
DC1	contoso.com	Domain controller
Server1	contoso.com	Member server
DC2	east.contoso.com	Domain controller
Server2	east.contoso.com	Member server

Contoso.com contains a user named User1.

You add User1 to the built-in Backup Operators group in contoso.com. Which servers can User1 back up?

- A. DC1 only
- B. Server1 only
- C. DC1 and DC2 only
- D. DC1 and Server1 only
- E. DC1, DC2, Server1, and Server2

Answer: A

NEW QUESTION 137

- (Topic 3)

Your network contains an Active Directory Domain Services (AD DS) domain named contoso.com.

You need to identify which server is the PDC emulator for the domain.

Solution: From Active Directory Sites and Services, you right-click Default-First-Site-Name in the console tree, and then select Properties.

Does this meet the goal?

- A. Yes
- B. No

Answer: B

NEW QUESTION 139

HOTSPOT - (Topic 3)

You have a server named Server1 that runs Windows Server and has the Hyper-V server role installed.

You need to limit which Hyper-V module cmdlets helpdesk users can use when administering Server 1 remotely.

You configure Just Enough Administration (JEA) and successfully build the role capabilities and session configuration files.

How should you complete the PowerShell command? To answer, select the appropriate options in the answer area.

NOTE: Each correct selection is worth one point.

Answer Area



- A. Mastered
- B. Not Mastered

Answer: A

Explanation:

Answer Area



NEW QUESTION 140

- (Topic 3)

Your network contains an on-premises Active Directory Domain Services (AD DS) domain named contoso.com. The domain contains three servers that run Windows Server and have the Hyper-V server role installed. Each server has a Switch Embedded Teaming (SET) team. You need to verify that Remote Direct Memory Access (RDMA) and all the required Windows Server settings are configured properly on each server. What should you use?

- A. Server Manager
- B. the validate-DCB cmdlet
- C. the Get-NetAdaptor cmdlet
- D. Failover Cluster Manager

Answer: B

Explanation:

Reference: <https://github.com/Microsoft/Validate-DCB>

NEW QUESTION 143

- (Topic 3)

Your network contains an Active Directory Domain Services (AD DS) domain.

You plan to use Active Directory Administrative Center to create a new user named User1. Which two attributes are required to create User1? Each correct answer presents part of the solution.

NOTE: Each correct selection is worth one point.

- A. Password
- B. Profile path
- C. User SamAccountName logon
- D. Full name
- E. First name
- F. User UPN logon

Answer: AC

NEW QUESTION 144

- (Topic 3)

You have five file servers that run Windows Server.

You need to block users from uploading video files that have the .mov extension to shared folders on the file servers. All other types of files must be allowed. The solution must minimize administrative effort.

What should you create?

- A. a Dynamic Access Control central access policy
- B. a file screen
- C. a Dynamic Access Control central access rule
- D. a data loss prevention (DLP) policy

Answer: B

Explanation:

Reference:

<https://docs.microsoft.com/en-us/windows-server/storage/fsrm/file-screening-management>

NEW QUESTION 147

DRAG DROP - (Topic 3)

You have an on-premises server named Server 1 that runs Windows Server. Server 1 contains a file share named Share 1. You have an Azure subscription. You perform the following actions:

- Deploy Azure File Sync
- Install the Azure File Sync agent on Server1.
- Register Server1 with Azure File Sync

You need to ensure that you can add Share1 as an Azure File Sync server endpoint. Which three actions should you perform in sequence? To answer, move the appropriate actions from the list of actions to the answer area and arrange them in the correct order.

Actions

Deploy the Azure Connected Machine agent.

Deploy an Azure VPN gateway.

Create a private endpoint.

Create an Azure Storage account.

Create an Azure file share.

Create a sync group.

Answer Area

A. Mastered
B. Not Mastered

Answer: A

Explanation:

Actions

Deploy the Azure Connected Machine agent.

Deploy an Azure VPN gateway.

Create a private endpoint.

Create an Azure Storage account.

Create an Azure file share.

Create a sync group.

Answer Area

Create an Azure Storage account.

Create an Azure file share.

Create a sync group.

NEW QUESTION 152
HOTSPOT - (Topic 3)

You have an on-premises Active Directory Domain Services (AD DS) domain that syncs with an Azure Active Directory (Azure AD) tenant. You have an on-premises web app named WebApp1 that only supports Kerberos authentication. You need to ensure that users can access WebApp1 by using their Azure AD account. The solution must minimize administrative effort. What should you configure? To answer, select the appropriate options in the answer area. NOTE: Each correct selection is worth one point.

Answer Area

In Azure AD:

The Azure AD Application Proxy connector

The Azure AD Application Proxy service

Web Application Proxy

On-premises:

The Azure AD Application Proxy connector

The Azure AD Application Proxy service

Web Application Proxy

A. Mastered
B. Not Mastered

Answer: A

Explanation:

Answer Area

In Azure AD:

The Azure AD Application Proxy connector

The Azure AD Application Proxy service

Web Application Proxy

On-premises:

The Azure AD Application Proxy connector

The Azure AD Application Proxy service

Web Application Proxy

NEW QUESTION 156
HOTSPOT - (Topic 3)

You have a Windows Server 2022 container host named Host1 and a container registry that contains the container images shown in the following table.

Name	Container base image OS version
Image1	Windows Server 2022
Image2	Windows Server 2019

You need to run the containers on Host1. Which isolation mode can you use for each image? To answer, select the appropriate options in the answer area.

NOTE: Each correct selection is worth one point.

Answer Area

Image1: ☐ Hyper-V isolation or process isolation
☐ Hyper-V isolation only
☐ Process isolation only
☒ Hyper-V isolation or process isolation

Image2: ☐ Hyper-V isolation only
☒ Hyper-V isolation only
☐ Process isolation only
☐ Hyper-V isolation or process isolation

Answer:

Answer Area

Image1: ☐ Hyper-V isolation or process isolation
☐ Hyper-V isolation only
☐ Process isolation only
☒ Hyper-V isolation or process isolation

Image2: ☐ Hyper-V isolation only
☒ Hyper-V isolation only
☐ Process isolation only
☐ Hyper-V isolation or process isolation

- A. Mastered
- B. Not Mastered

Answer: A

NEW QUESTION 160

HOTSPOT - (Topic 3)

You have an Azure Active Directory Domain Services (Azure AD DS) domain. You create a new user named Admin1. You need Admin1 to deploy custom Group Policy settings to all the computers in the domain. The solution must use the principle of least privilege. What should you include in the solution? To answer, select the appropriate options in the answer area.

NOTE: Each correct selection is worth one point

Add Admin1 to the following group:

<input type="checkbox"/> AAD DC Administrators
<input type="checkbox"/> Domain Admins
<input checked="" type="checkbox"/> Group Policy Creator Owners

Instruct Admin1 to apply the custom Group Policy settings by:

<input checked="" type="checkbox"/> Creating a new Group Policy Object (GPO) and linking the GPO to the domain
<input checked="" type="checkbox"/> Modifying AADDC Computers GPO
<input checked="" type="checkbox"/> Modifying the default domain GPO

- A. Mastered
- B. Not Mastered

Answer: A

Explanation:

NEW QUESTION 164

- (Topic 3)

Note: This question is part of a series of questions that present the same scenario. Each question in the series contains a unique solution that might meet the stated goals. Some question sets might have more than one correct solution, while others might not have a correct solution.

After you answer a question in this section, you will NOT be able to return to it. As a result, these questions will not appear in the review screen.

You are planning the deployment of DNS to a new network.

You have three internal DNS servers as shown in the following table.

Name	Location	IP address	Local DNS zone
Server1	Montreal	10.0.1.10	contoso.local
Server2	Toronto	10.0.2.10	east.contoso.local
Server3	Seattle	10.0.3.10	west.contoso.local

The contoso.local zone contains zone delegations for east.contoso.local and west.contoso.local. All the DNS servers use root hints.

You need to ensure that all the DNS servers can resolve the names of all the internal namespaces and internet hosts.

Solution: On Server2 and Server3, you configure a conditional forwarder for contoso.local. Does this meet the goal?

- A. Yes

B. No

Answer: B

Explanation:

[https://docs.microsoft.com/en-us/previous-versions/windows/it-pro/windows-server-2008-r2-and-2008/cc794735\(v=ws.10\)](https://docs.microsoft.com/en-us/previous-versions/windows/it-pro/windows-server-2008-r2-and-2008/cc794735(v=ws.10))

NEW QUESTION 168

HOTSPOT - (Topic 3)

You have an Azure subscription named sub1 and 500 on-premises virtual machines that run Windows Server. You plan to onboard the on-premises virtual machines to Azure Arc by running the Azure Arc deployment script. You need to create an identity that mil be used by the script to authenticate access to sub1. The solution must use the principle of least privilege. How should you complete the command? To answer, select the appropriate options in the answer area. NOTE: Each correct selection is worth one point.

Answer Area

New-AzADAppCredential New-AzADServicePrincipal New-AzUserAssignedIdentity	-DisplayName 'Arc-for-servers' -Role	'Azure Connected Machine Onboarding' 'Virtual Machine Contributor' 'Virtual Machine User Login'
---	--------------------------------------	---

- A. Mastered
- B. Not Mastered

Answer: A

Explanation:

Answer Area

New-AzADAppCredential New-AzADServicePrincipal New-AzUserAssignedIdentity	-DisplayName 'Arc-for-servers' -Role	'Azure Connected Machine Onboarding' 'Virtual Machine Contributor' 'Virtual Machine User Login'
---	--------------------------------------	---

NEW QUESTION 170

- (Topic 3)

You have a server named Server1 that runs Windows Server and contains a file share named Share1. You need to prevent users from stoning MP4 files in Share1. The solution must ensure that the users can store other types of files in the share. What should you configure on Server1?

- A. File Management Tasks
- B. NTFS Quotas
- C. NTFS permissions
- D. file screens

Answer: D

NEW QUESTION 175

HOTSPOT - (Topic 3)

You have a Group Policy Object (GPO) named GPO1 that contains user settings only. You plan to apply GPO1 to a global security group named Group1. You link GP01 to the domain, and you remove all the permissions granted to the Authenticated Users group. You need to configure permissions for GP01 to meet the following requirements.

- GPO1 must apply only to the users in Group 1.
- The solution must use the principle of least privilege

Answer Area

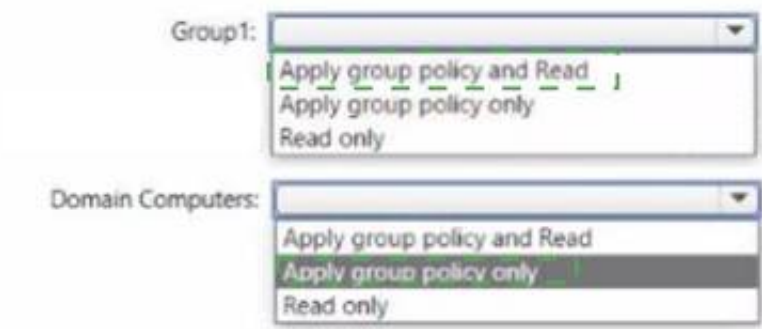
Group1:	Apply group policy and Read Apply group policy only Read only
Domain Computers:	Apply group policy and Read Apply group policy only Read only

- A. Mastered
- B. Not Mastered

Answer: A

Explanation:

Answer Area



NEW QUESTION 177

- (Topic 3)
You have an on-premises Active Directory Domain Services (AD DS) domain that syncs with an Azure Active Directory (Azure AD) tenant. You plan deploy 100 new Azure virtual machines that will run Windows Server. You need to ensure that each new virtual machine is joined to the AD DS domain. What should you use?

- A. Azure AD Connect
- B. a Group Policy Object (GPO)
- C. an Azure Resource Manager (ARM) template
- D. an Azure management group

Answer: C

Explanation:

Reference:
<https://www.ludovicmedard.com/create-an-arm-template-of-a-virtual-machine-automatically-joined-to-a-domain/>

NEW QUESTION 178

HOTSPOT - (Topic 3)
Your network contains an Active Directory Domain Services (AD DS) domain named contoso.com. The domain contains the VPN servers shown in the following table.

Name	IP address
VPN1	172.16.0.254
VPN2	131.10.15.254
VPN3	10.10.0.254

You have a server named NPS1 that has Network Policy Server (NPS) installed. NPS1 has the following RADIUS clients:

Name : NPSclient1
Address : 172.16.0.254
AuthAttributeRequired : False
SharedSecret : Pa55w.rd
VendorName : RADIUS Standard
Enabled : False

Name : NPSclient2
Address : 131.10.15.254
AuthAttributeRequired : False
SharedSecret : Pa55w.rd
VendorName : RADIUS Standard
Enabled : True

Name : NPSclient3
Address : 172.16.1.254
AuthAttributeRequired : False
SharedSecret : Pa55w.rd
VendorName : RADIUS Standard
Enabled : True

VPN1, VPN2, and VPN3 use NPS1 for RADIUS authentication. All the users in contoso.com are allowed to establish VPN connections. For each of the following statements, select Yes If the statement is true. Otherwise, select No. NOTE: Each correct selection is worth one point.

Answer Area

Statements	Yes	No
The contoso.com users can authenticate successfully when they establish a VPN connection to VPN1.	<input type="radio"/>	<input type="radio"/>
The contoso.com users can authenticate successfully when they establish a VPN connection to VPN2.	<input type="radio"/>	<input type="radio"/>
The contoso.com users can authenticate successfully when they establish a VPN connection to VPN3.	<input type="radio"/>	<input type="radio"/>

- A. Mastered
- B. Not Mastered

Answer: A

Explanation:

Answer Area

Statements

The contoso.com users can authenticate successfully when they establish a VPN connection to VPN1.

The contoso.com users can authenticate successfully when they establish a VPN connection to VPN2.

The contoso.com users can authenticate successfully when they establish a VPN connection to VPN3.

Yes

No

☐

☒

☒

☐

☐

☒

NEW QUESTION 182

DRAG DROP - (Topic 3)

You have a server named Server 1 that runs Windows Server and has the Hyper-V server role installed. Server1 hosts a virtual machine named VM1. Server1 has an NV Me storage device that is assigned to VM1 by using Discrete Device Assignment. You need to make the device available to the host. Which four actions should you perform in sequence? To answer, move the appropriate actions from the list of actions to the answer area and arrange them in the correct order.

Actions

From VM1, disable the device by using Device Manager.

From Server1, stop VM1.

From Server1, run the Remove-VMAssignableDevice cmdlet.

From Server1, run the Mount-VMHostAssignableDevice cmdlet.

From Server1, enable the device by using Device Manager.

Answer Area

- A. Mastered
- B. Not Mastered

Answer: A

Explanation:

Actions

From VM1, disable the device by using Device Manager.

From Server1, stop VM1.

From Server1, run the Remove-VMAssignableDevice cmdlet.

From Server1, run the Mount-VMHostAssignableDevice cmdlet.

From Server1, enable the device by using Device Manager.

Answer Area

From Server1, stop VM1.

From Server1, run the Remove-VMAssignableDevice cmdlet.

From Server1, run the Mount-VMHostAssignableDevice cmdlet.

From Server1, enable the device by using Device Manager.

NEW QUESTION 187

- (Topic 3)

Your network contains an Active Domain Services (AD DS) forest. The forest contains three domains. Each domain contains 10 domain controllers. You plan to store a DNS zone in a custom active Directory partition. You need to create the Active Directory partition for the zone. The partition replicate to only four of the domain controllers. What should you use?

- A. Active Directory Sites and Services
- B. Active Directory Administrator Center
- C. dnscmd.exe
- D. DNS Manager

Answer: B

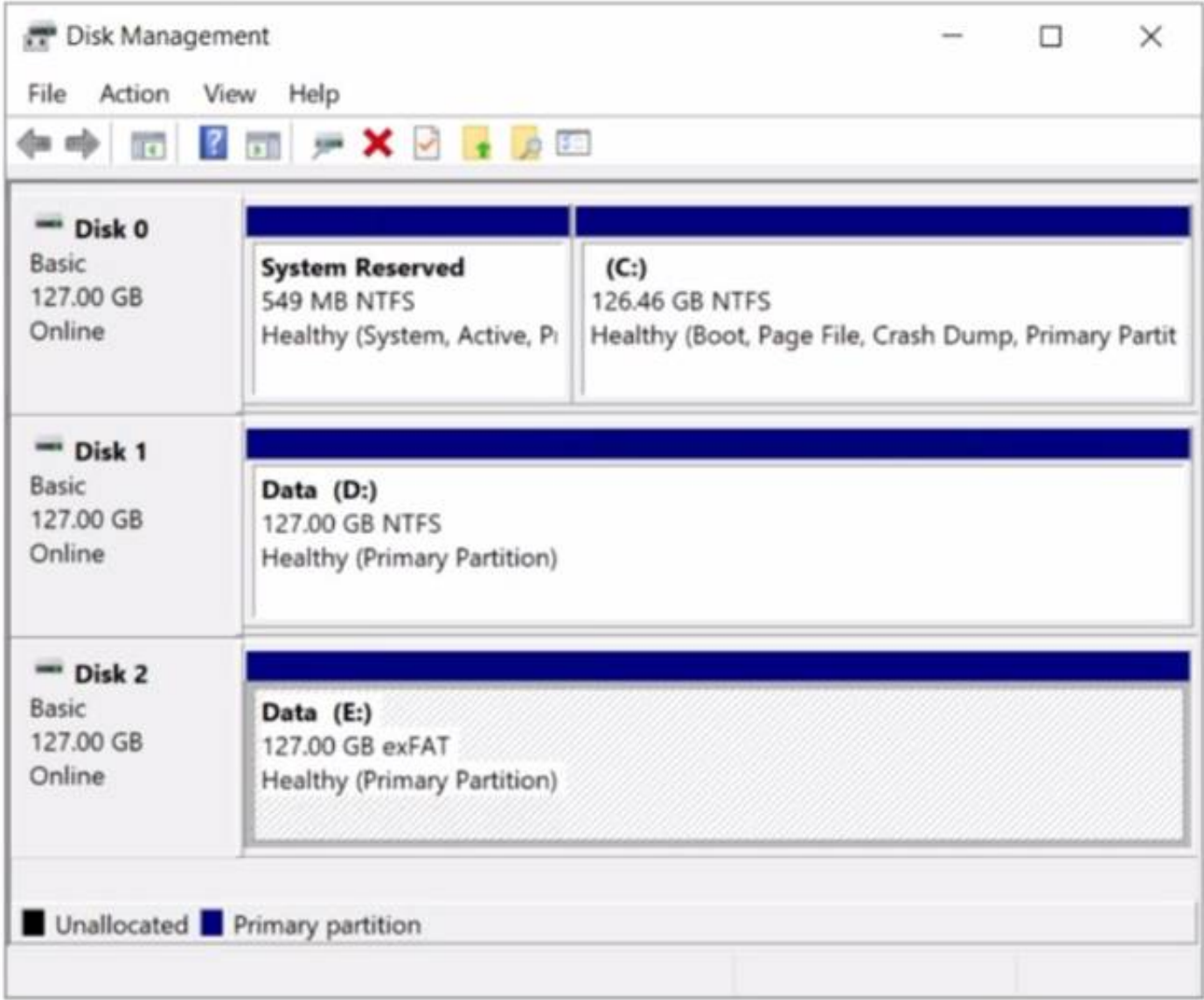
NEW QUESTION 191

- (Topic 3)

You have a server named Server1 that runs Windows Server. The disks on Server1 are configured as shown in the following exhibit.

Passing Certification Exams Made Easy

visit - https://www.2PassEasy.com



You need to convert volume E to ReFS. The solution must meet the following requirements:

- Preserve the existing data on volume E.
- Minimize administrative effort. What should you do first?

- A. Take Disk 2 offline.
- B. Back up the data on volume E.
- C. Convert Disk 2 to a dynamic disk.
- D. Runconvert.exe.

Answer: B

NEW QUESTION 196

HOTSPOT - (Topic 3)

You have a server named Server1 that runs Windows Server. Server1 has a just-a-bunch- of-disks (JBOD) enclosure attached. You plan to create a storage pool on Server1 and a virtual disk that will use a mirror layout. You are considering whether to use a two-way or a three-way mirror layout. What is the minimum number of disks required for each type of mirror layout? To answer, select the appropriate options in the answer area. NOTE: Each correct selection is worth one point.

Answer Area

Two-way mirror:

Three-way mirror:

- A. Mastered
- B. Not Mastered

Answer: A

Explanation:

Answer Area

Two-way mirror:

Three-way mirror:

NEW QUESTION 201

DRAG DROP - (Topic 3)

Your network contains an Active Directory domain, a web app named App1, and a perimeter network. The perimeter network contains a server named Server1 that runs Windows Server.

You plan to provide external access to App1.

You need to implement the Web Application Proxy role service on Server1.

Which role should you add to Server1, and which role should you add to the network? To answer, drag the appropriate roles to the correct targets. Each role may be used once, more than once, or not at all. You may need to drag the split bar between panes or scroll to view content.

Roles

Active Directory Certificate Services

Active Directory Federation Services

Network Policy and Access Services

Remote Access

Answer Area

Role on Server1:

Role on the network:

- A. Mastered
- B. Not Mastered

Answer: A

Explanation:

Roles

Active Directory Certificate Services

Active Directory Federation Services

Network Policy and Access Services

Remote Access

Answer Area

Role on Server1: Remote Access

Role on the network: Network Policy and Access Services

NEW QUESTION 202

- (Topic 3)

You have an on-premises Active Directory Domain Services (AD DS) domain that syncs with an Azure Active Directory (Azure AD) tenant. The on-premises network is connected to Azure by using a Site-to-Site VPN. You have the DNS zones shown in the following table.

Name	Location	Description
contoso.com	A domain controller named DC1 on the on-premises network	Provides name resolution on-premises
fabrikam.com	An Azure private DNS zone	Provides name resolution for all Azure virtual networks

You need to ensure that names from fabrikam.com can be resolved from the on-premises network. Which two actions should you perform? Each correct answer presents part of the solution. NOTE: Each correct selection is worth one point.

- A. Create a conditional forwarder for fabrikam.com on DC1.
- B. Create a stub zone for fabrikam.com on DC1.
- C. Create a secondary zone for fabrikam.com on DC1.
- D. Deploy an Azure virtual machine that runs Windows Server.
- E. Modify the DNS Servers settings for the virtual network.
- F. Deploy an Azure virtual machine that runs Windows Server.
- G. Configure the virtual machine as a DNS forwarder.

Answer: AE

Explanation:

Reference:

<https://docs.microsoft.com/en-us/azure/private-link/private-endpoint-dns#on-premises-workloads-using-a-dns-forwarder>

NEW QUESTION 207

- (Topic 3)

Your network contains an Active Directory Domain Services (AD DS) domain. The domain contains the resources shown in the following table.

Name	Description
CLIENT1	Client computer that runs Windows
DC1	Domain controller
Server1	File server
Server2	File server

You plan to replicate a volume from Server1 to Server2 by using Storage Replica. You need to configure Storage Replica. Where should you install Windows Admin Center?

- A. Server 1
- B. CLIENT1
- C. DC1
- D. Server2

Answer: A

NEW QUESTION 210

- (Topic 3)

You have a server named Server1 that hosts Windows containers. You plan to deploy an application that will have multiple containers. Each container will be You need to create a Docker network that supports the deployment of the application. Which type of network should you create?

- A. transparent
- B. I2bridge
- C. NAT
- D. I2tunnel

Answer: A

Explanation:

Reference:

https://docs.microsoft.com/en-us/virtualization/windowscontainers/container-networking/network-drivers-topologies

NEW QUESTION 213

HOTSPOT - (Topic 3)

Your on-premises network contains an Active Directory domain named contoso.com and 500 servers that run Windows Server. All the servers are Azure Arc-enabled and joined to contoso.com.

You need to implement PowerShell Desired State Configuration (DSC) on all the servers. The solution must minimize administrative effort.

Where should you store the DSC scripts, and what should you use to apply DSC to the servers? To answer, select the appropriate options in the answer area.

NOTE: Each correct selection is worth one point.

Answer Area

Store in:

- An Azure Automation account
- An Azure App Configuration store
- An Azure Automation account**
- An Azure Policy definition

Use:

- Guest configuration in Azure Policy
- A Group Policy Object (GPO) in Active Directory Domain Services (AD DS)
- Azure virtual machine extensions
- Guest configuration in Azure Policy**

- A. Mastered
- B. Not Mastered

Answer: A

Explanation:

Answer Area

Store in:

- An Azure Automation account
- An Azure App Configuration store
- An Azure Automation account**
- An Azure Policy definition

Use:

- Guest configuration in Azure Policy
- A Group Policy Object (GPO) in Active Directory Domain Services (AD DS)
- Azure virtual machine extensions
- Guest configuration in Azure Policy**

NEW QUESTION 218

- (Topic 3)

You have servers that have the DNS Server role installed. The servers are configured as shown in the following table.

Name	Office	Local DNS zone	IP address
Server1	Paris	contoso.com	10.1.1.1
Server2	New York	None	10.2.2.2

All the client computers in the New York office use Server2 as the DNS server. You need to configure name resolution in the New York office to meet the following requirements:

- ? Ensure that the client computers in New York can resolve names from contoso.com.
- ? Ensure that Server2 forwards all DNS queries for internet hosts to 131.107.100.200.

The solution must NOT require modifications to Server1. Each correct answer presents part of the solution. NOTE: Each correct selection is worth one point.

- A. a forwarder
- B. a conditional forwarder
- C. a delegation
- D. a secondary zone
- E. a reverse lookup zone

Answer: AB

Explanation:

A conditional forwarder is required for contoso.com. A forwarder is required for all other domains.

When you have a conditional forwarder and a forwarder configured, the conditional forwarder will be used for the specified domain.

You could use a secondary zone for contoso.com but that would require a configuration change on Server1.

NEW QUESTION 220

HOTSPOT - (Topic 3)

You have a server named Server1 that runs Windows Server and contains three volumes named C, D, and E. Files are stored on Server1 as shown in the following table.

Name	On volume	Size
File1	C	500 KB
File2	D	10 KB
File3	D	1 MB

For volume D, Data Deduplication is enabled and set to General purpose file server. You perform the following actions:

- Move File1 to volume D.
- Copy File2 to volume D and name the copy File4.
- Move File3 to volume E

For each of the following statements, select Yes if the statement is true. Otherwise, select No. NOTE: Each correct selection is worth one point.

Answer Area			
Statements	Yes	No	
File1 is deduplicated after the deduplication job runs.	<input type="radio"/>	<input type="radio"/>	
File3 is deduplicated after the deduplication job runs.	<input type="radio"/>	<input type="radio"/>	
File4 is deduplicated after the deduplication job runs.	<input type="radio"/>	<input type="radio"/>	

- A. Mastered
- B. Not Mastered

Answer: A

Explanation:

Answer Area			
Statements	Yes	No	
File1 is deduplicated after the deduplication job runs.	<input type="radio"/>	<input checked="" type="radio"/>	
File3 is deduplicated after the deduplication job runs.	<input type="radio"/>	<input checked="" type="radio"/>	
File4 is deduplicated after the deduplication job runs.	<input checked="" type="radio"/>	<input type="radio"/>	

NEW QUESTION 223

HOTSPOT - (Topic 2)

You need to configure Azure File Sync to meet the file sharing requirements. What should you do? To answer, select the appropriate options in the answer area. NOTE Each correct selection is worth one point.

Answer Area

Minimum number of sync groups to create:

1234

Minimum number of Storage Sync Services to create:

1234

- A. Mastered
- B. Not Mastered

Answer: A

Explanation:

Answer Area

Minimum number of sync groups to create:

1234

Minimum number of Storage Sync Services to create:

1234

NEW QUESTION 225

DRAG DROP - (Topic 2)

Which three actions should you perform in sequence to meet the security requirements for Webapp1? To answer, move the appropriate actions from the list of actions to the answer area and arrange them in the correct order.

Actions

Create a standalone managed service account (sMSA) in AD DS.

Configure the IIS application pool to run as Network Service.

Configure the IIS application pool to run as a specified user account.

Create a group managed service account (gMSA) in Active Directory.

Create a system-assigned managed identity in Azure AD.

Create a user-assigned managed identity in Azure AD.

Create the Key Distribution Services (KDS) root key in AD DS.



Answer Area

- A. Mastered
- B. Not Mastered

Answer: A

Explanation:

Actions

Create a standalone managed service account (sMSA) in AD DS.

Configure the IIS application pool to run as Network Service.

Configure the IIS application pool to run as a specified user account.

Create a group managed service account (gMSA) in Active Directory.

Create a system-assigned managed identity in Azure AD.

Create a user-assigned managed identity in Azure AD.

Create the Key Distribution Services (KDS) root key in AD DS.



Answer Area

Configure the IIS application pool to run as Network Service.

Create a group managed service account (gMSA) in Active Directory.

Create the Key Distribution Services (KDS) root key in AD DS.

NEW QUESTION 226

- (Topic 2)

You need to implement a name resolution solution that meets the networking requirements. Which two actions should you perform? Each correct answer presents part of the solution.

NOTE: Each correct selection is worth one point

- A. Create an Azure private DNS zone named corp.fabhkam.com.
- B. Create a virtual network link in the coip.fabnkam.c om Azure private DNS zone.
- C. Create an Azure DNS zone named corp.fabrikam.com.
- D. Configure the DNS Servers settings for Vnet1.
- E. Enable autoregistration in the corp.fabnkam.com Azure private DNS zone.
- F. On DC3, install the DNS Server role.
- G. Configure a conditional forwarder on DC3.

Answer: DF

Explanation:

Virtual machines in an Azure virtual network receive their DNS configuration from the DNS settings configured on the virtual network. You need to configure the Azure virtual network to use DC3 as the DNS server. Then all virtual machines in the virtual network will use DC3 and their DNS server.

NEW QUESTION 227

- (Topic 2)

You are planning the implementation Azure Arc to support the planned changes. You need to configure the environment to support configuration management policies. What should you do?

- A. Hybrid Azure AD join all the servers.
- B. Create a hybrid runbook worker m Azure Automation.
- C. Deploy the Azure Connected Machine agent to all the servers.
- D. Deploy the Azure Monitor agent to all the servers.

Answer: C

Explanation:

Reference:

<https://docs.microsoft.com/en-us/azure/azure-arc/servers/plan-at-scale-deployment>

NEW QUESTION 228

- (Topic 1)

You need to meet the technical requirements for Server1. Which users can currently perform the required tasks?

- A. Admin1 only
- B. Admin3 only
- C. Admin1 and Admin3 only
- D. Admin1 Admin2. and Admm3

Answer: C

NEW QUESTION 233

- (Topic 2)

You need to implement an availability solution for DHCP that meets the networking requirements.

Which two actions should you perform? Each correct answer presents part of the solution. NOTE: Each correct selection is worth one point.

- A. On DHCP1. create a scope that contains 25 percent of the IP addresses from Scope2.
- B. On the router in each office, configure a DHCP relay.
- C. DHCP2. configure a scope that contains 25 percent of the IP addresses from Scope 1 .
- D. On each DHCP server, install the Failover Clustering feature and add the DHCP clusterrole.
- E. On each DHCP scope, configure DHCP failover.

Answer: BE

Explanation:

Reference:

[https://docs.microsoft.com/en-us/previous-versions/windows/it-pro/windows-server-2012-r2-and-2012/hh831385\(v=ws.11\)](https://docs.microsoft.com/en-us/previous-versions/windows/it-pro/windows-server-2012-r2-and-2012/hh831385(v=ws.11))

NEW QUESTION 234

HOTSPOT - (Topic 1)

Which groups can you add to Group3 and Group5? To answer, select the appropriate options in the answer area.

NOTE: Each correct selection is worth one point.

Group3:

Group6 only
Group1 and Group2 only
Group1 and Group4 only
Group1, Group2, Group4, and Group5 only
Group1, Group2, Group4, Groups, and Group6

Group5:

Group1 only
Group4 only
Group6 only
Group2 and Group4 only
Group4 and Group6 only

- A. Mastered
- B. Not Mastered

Answer: A

Explanation:

Group3:

Group6 only
Group1 and Group2 only
Group1 and Group4 only
Group1, Group2, Group4, and Group5 only
Group1, Group2, Group4, Groups, and Group6

Group5:

Group1 only
Group4 only
Group6 only
Group2 and Group4 only
Group4 and Group6 only

NEW QUESTION 237

- (Topic 1)

You need to meet the technical requirements for VM3 On which volumes can you enable Data Deduplication?

- A. D and E only
- B. C, D, E, and F
- C. D only
- D. C and D only
- E. D, E, and F only

Answer: A

Explanation:

Reference:

<https://docs.microsoft.com/en-us/windows-server/storage/data-deduplication/interop>

NEW QUESTION 242

- (Topic 1)

You need to meet the technical requirements for the site links. Which users can perform the required tasks?

- A. Admin1 only

- B. Admin1 and Admin3 only
- C. Admin1 and Admin2 only
- D. Admin3 only
- E. Admin1, Adrrun2. and Admin3

Answer: C

Explanation:

Membership in the Enterprise Admins group or the Domain Admins group in the forest root domain is required.

NEW QUESTION 246

HOTSPOT - (Topic 1)

Which groups can you add lo Group3 and Groups? To answer, select the appropriate options in the answer area. NOTE Each correct selection is worth one point.

Answer Area

Group3:

Group6 only

Group1 and Group2 only

Group1 and Group4 only

Group1, Group2, Group4, and Group5 only

Group1, Group2, Group4, Group5, and Group6

Group5:

Group1 only

Group4 only

Group6 only

Group2 and Group4 only

Group4 and Group6 only

- A. Mastered
- B. Not Mastered

Answer: A

Explanation:

Answer Area

Group3:

Group6 only

Group1 and Group2 only

Group1 and Group4 only

Group1, Group2, Group4, and Group5 only

Group1, Group2, Group4, Group5, and Group6

Group5:

Group1 only

Group4 only

Group6 only

Group2 and Group4 only

Group4 and Group6 only

NEW QUESTION 247

.....

THANKS FOR TRYING THE DEMO OF OUR PRODUCT

Visit Our Site to Purchase the Full Set of Actual AZ-800 Exam Questions With Answers.

We Also Provide Practice Exam Software That Simulates Real Exam Environment And Has Many Self-Assessment Features. Order the AZ-800 Product From:

<https://www.2passeasy.com/dumps/AZ-800/>

Money Back Guarantee

AZ-800 Practice Exam Features:

- * AZ-800 Questions and Answers Updated Frequently
- * AZ-800 Practice Questions Verified by Expert Senior Certified Staff
- * AZ-800 Most Realistic Questions that Guarantee you a Pass on Your FirstTry
- * AZ-800 Practice Test Questions in Multiple Choice Formats and Updatesfor 1 Year