

# Cisco

## Exam Questions 200-901

Developing Applications and Automating Workflows using Cisco Core Platforms (DEVASC)



### NEW QUESTION 1

- (Exam Topic 2)

What is a capability of the NETCONF protocol?

- A. allows Python scripts to be executed externally from a network device
- B. uses JSON to encode data in its content layer
- C. allows XML messages to be exchanged via the SSH protocol
- D. exposes a web-based interface

**Answer: C**

### NEW QUESTION 2

- (Exam Topic 2)

Refer to the exhibit.

```
import requests
from requests.auth import HTTPBasicAuth
headers = {'Content-Type': 'application/json'}
base_url = 'https://10.1.2.3'
auth_url = '/dna/system/api/v1/auth/token'
devices_url = '/dna/intent/api/v1/network-device'

token = requests.post(
    base_url + auth_url, headers=headers,
    auth=HTTPBasicAuth(username="admin", password="DevNet123"))
data = token.json()

query_string_params = {'platformId': 'C9500-40X'}
response = requests.get(
    base_url + devices_url, headers=headers,
    params=query_string_params)
print(f'{response.code}')
```

A network engineer must manage the network devices. The engineer prepares a Python scripts to authenticate to the Cisco to DNA Center API and request a device list. The device request fails and returns errors code 401. Which action solves the problem?

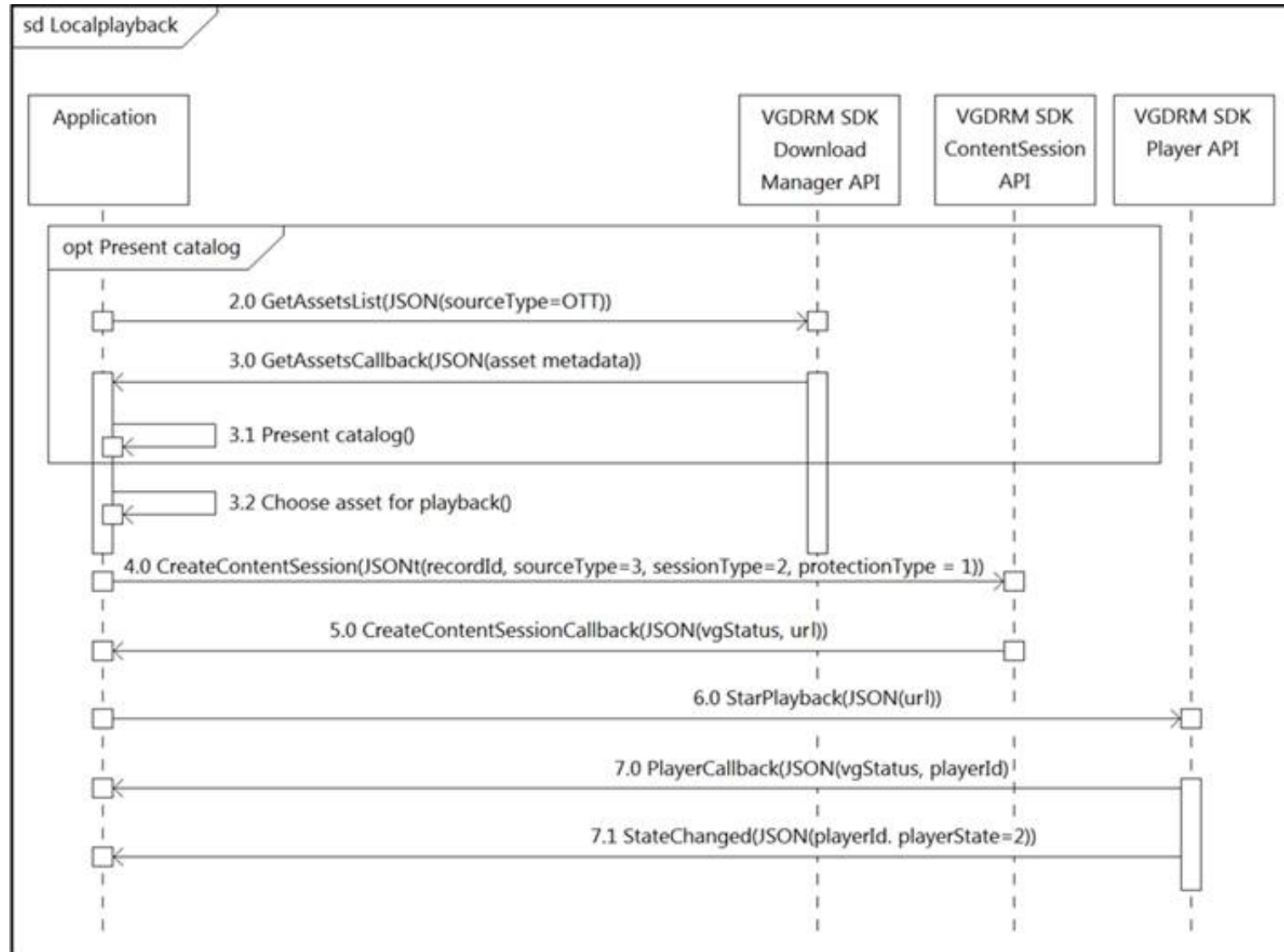
- A. Update the API UR
- B. which matched the API endpoint for device list.
- C. Send the request to another network in case there are reachability Issues.
- D. Send the Authentication header In the request with a valid configuration.
- E. Update the credentials that are already supplied and retry the request

**Answer: D**

### NEW QUESTION 3

- (Exam Topic 2)

Refer to the exhibit.



What do all the calls shown in the sequence diagram have in common?

- A. All the calls are optional.
- B. All the calls are asynchronous.

- C. All the calls are synchronous.
- D. All the calls depend on the catalog.

Answer: D

#### NEW QUESTION 4

- (Exam Topic 2)

Devices

## Get Device Count

**Operation Id:** `getDeviceCount`

**Description:** Returns the count of network devices based on the filter criteria by management IP address, mac address, hostname and location name

GET

/dna/intent/api/v1/network-device/count

## Request Parameters

## Responses

**Status:** 200

The request was successful. The result is contained in the response body.

Schema Definition

Example Body

CountResult

response: integer

version: string

+ -

Refer to the exhibit. Drag and drop the code snippets from the bottom onto the blanks in the code to construct a request to find the Cisco DNA Center switch count. Not all options are used.

```
curl -L --request  \
--  https://dna/intent/api/v1/network-device/  \
--header '  : application/json' \
--header 'Accept: application/json'
```

url	network	count
POST	GET	Content-Type

- A. Mastered
- B. Not Mastered

Answer: A

Explanation:

```
curl -L --request GET \
-- url https://dna/intent/api/v1/network-device/ count \
--header 'Content-Type : application/json' \
--header 'Accept: application/json'
```

url	network	count
POST	GET	Content-Type

#### NEW QUESTION 5

- (Exam Topic 2)

Which protocol runs over TCP port 23?

- A. SSH
- B. NETCONF
- C. HTTP
- D. Telnet

**Answer:** D

#### NEW QUESTION 6

- (Exam Topic 2)

A developer has created a new image to use in a Docker build and has added a tag for the image by using the command:

```
$ docker tag 84fe411926287 local/app:0.4
```

Which command must be executed next to build the Docker image using the tag?

- A. \$ docker build -p local/app:0.4
- B. \$ docker run -t local/app:0.4
- C. \$ docker run -p local/app:0.4
- D. \$ docker build -t local/app:0.4

**Answer:** D

#### NEW QUESTION 7

- (Exam Topic 2)

Access to the management interface of devices must be restricted by using SSH and HTTPS. Which two ports must be included in the ACLs for the protocols to work? (Choose two.)

- A. 22
- B. 23
- C. 80
- D. 443
- E. 880

**Answer:** AD

#### NEW QUESTION 8

- (Exam Topic 2)

A company wants to accelerate the adoption of technologies that will simplify its operations. Staff have different skill levels and are looking for a single site to find easy-to-consume beginner, intermediate, and advanced multidomain use cases. Which site should be used?

- A. DevNet Ecosystem Exchange
- B. DevNet Automation Exchange
- C. DevNet Creations
- D. DevNet Support Forum

**Answer:** D

#### NEW QUESTION 9

- (Exam Topic 2)

Refer to the exhibit.

##### **API v1 documentation:**

Authentication and authorization: Bearer Token

Inventory endpoint: /api/v1/inventory

Method: GET

Response formats: text/html, application/json,  
application/html

##### **Token:**

dXNIcm5hbWU6cGFzc3dvcmQ=

##### **Api call:**

GET /api/v1/inventory HTTP/1.1

Host: example.com

##### **Response:**

HTTP/1.1 401 Unauthorized

An API call is constructed to retrieve the inventory in XML format by using the API. The response to the call is 401 Unauthorized. Which two headers must be added to the API call? (Choose two.)

- ☐ Accept: application/xml
- ☐ Content-Type: application/xml
- ☐ Authentication: Bearer dXN1cm5hbWU6cGFzc3dvcmQ=
- ☐ Bearer-Token: dXN1cm5hbWU6cGFzc3dvcmQ=
- ☐ Authorization: Bearer dXN1cm5hbWU6cGFzc3dvcmQ=

- A. Option A
- B. Option B
- C. Option C
- D. Option D
- E. Option E

**Answer:** BE

#### NEW QUESTION 10

- (Exam Topic 2)

Before which process is code review performed when version control is used?

- A. Branching code
- B. Merge of code
- C. Checkout of code
- D. Committing code

**Answer:** D

#### NEW QUESTION 10

- (Exam Topic 2)

What is the purpose of a MAC address on a network device?

- A. unique network address that identifies the network interface of a device
- B. unique network interlace address that is provided by the DHCP server
- C. unique hardware address that identifies the network interface of a device
- D. unique hardware interface address that is provided by the central switch

**Answer:** C

#### NEW QUESTION 12

- (Exam Topic 2)

What is a benefit of test-driven development?

- A. early customer involvement
- B. increased code quality
- C. faster releases that have minimal features
- D. strict adherence to product requirements

**Answer:** D

#### NEW QUESTION 15

- (Exam Topic 2)

What is the difference between YAML and JSON data structure?

- A. YAML uses spaces; JSON uses parentheses
- B. YAML uses indentation; JSON uses brackets and braces
- C. YAML uses brackets and braces; JSON uses indentation
- D. YAML uses parentheses; JSON uses spaces

**Answer:** A

#### NEW QUESTION 20

- (Exam Topic 2)

A developer creates a web application that receives a username and password and uses them to sync the credentials to other services through HTTPS. API keys to services are part of the configuration files of the application, but the credentials to the database that stores the synchronization logs are obtained through an external vault service. What is the security issue in this scenario?

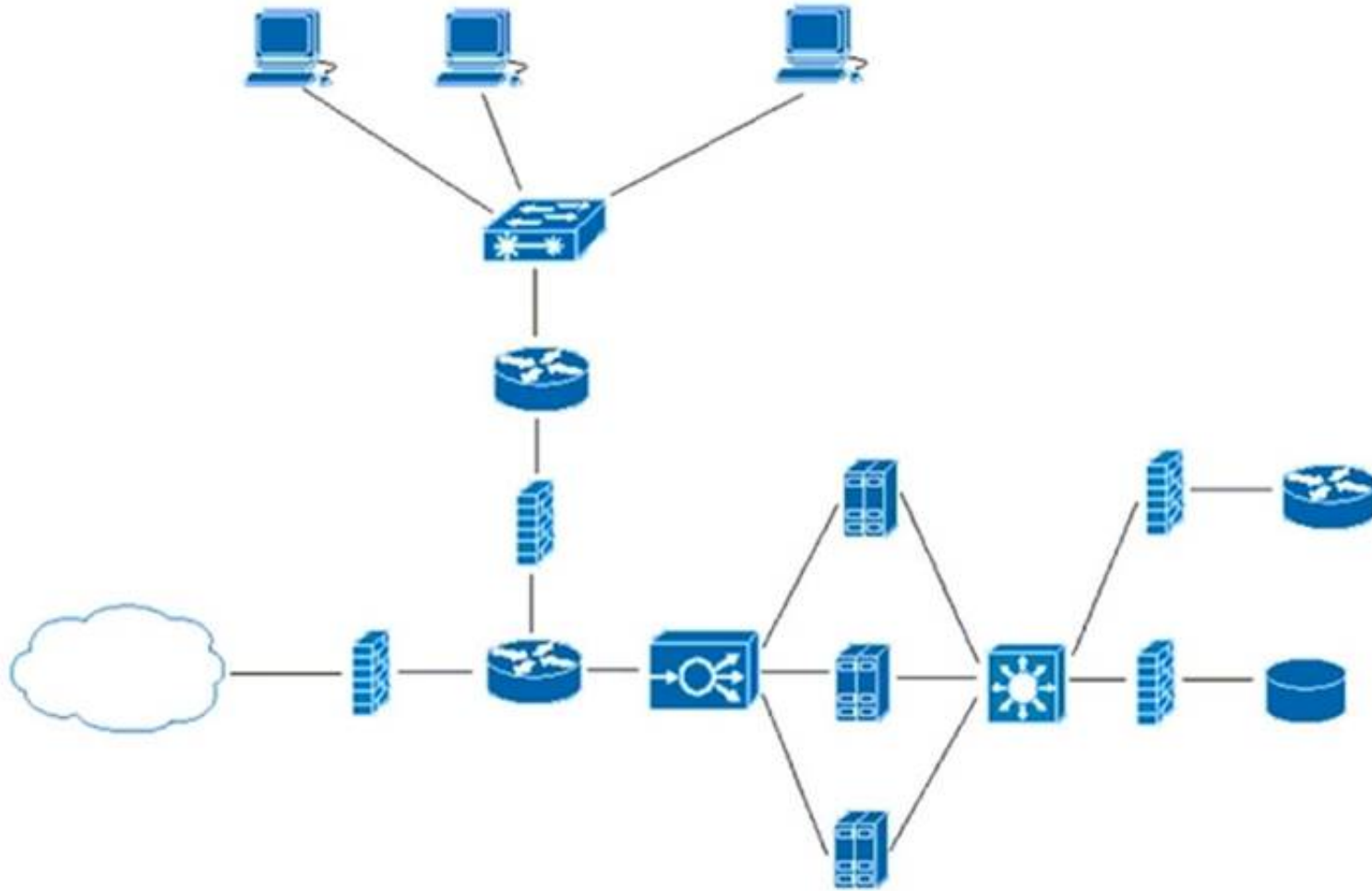


- A. Communication between the application and the services is not encrypted.
- B. The database credentials should be stored in the configuration files so that they are secured on the same server.
- C. The API keys are stored in the configuration files but should be stored in the vault service.
- D. The synchronization logs should be encrypted and not stored in a relational database.

**Answer: A**

#### NEW QUESTION 21

- (Exam Topic 2)



Refer to the exhibit. What does the load balancer enable in the network topology?

- A. hosted application to access Internet services
- B. external requests to be routed to the application servers
- C. workstations to access the Internet
- D. application to access the database server

**Answer: C**

#### NEW QUESTION 26

- (Exam Topic 2)

A developer is creating a script to interact with a REST API service which requires basic authentication. The credentials are "devnet:391665405" and the Base64 encoding of the credentials is "GV2bmV0dXNlcjpaXNj=". Which payload and header combination must be used for authentication?

- A.
- ```
payload = {
  'Authorization' : 'Basic GV2bmV0dXNlcjpDaXNj=',
  'Content-Type' : 'application/json'
}
headers= {}
```
- B.
- ```
payload = {}
headers= {
  'Authorization' : 'Basic GV2bmV0dXNlcjpDaXNj=',
  'Content-Type' : 'application/json'
}
```
- C.
- ```
payload = {
  'Authorization' : 'Bearer GV2bmV0dXNlcjpDaXNj=',
  'Content-Type' : 'application/json'
}
headers= {}
```
- D.
- ```
payload = {}
headers= {
  'Authorization' : 'Bearer GV2bmV0dXNlcjpDaXNj=',
  'Content-Type' : 'application/json'
}
```

- A. Option A  
B. Option B  
C. Option C  
D. Option D

**Answer:** B

**Explanation:**

<https://developer.cisco.com/docs/epnm/#!how-to-authenticate/authorization>

**NEW QUESTION 31**

- (Exam Topic 2)

What are two benefits of model-driven programmability?

- A. model-driven APIs for abstraction and simplification  
B. single choice of transport, protocol, and encoding  
C. model-based, structured, and human friendly  
D. easier to design, deploy, and manage APIs  
E. models decoupled from transport, protocol, and encoding

**Answer:** DE

**NEW QUESTION 33**

- (Exam Topic 2)

What are two use case where webhooks are effective? (Choose two.)

- A. Close a session with a web server after a specific amount of time.  
B. Filter out information from a response to an API call  
C. Change the response format or content type of an API call.  
D. Inform a previously defined chat channel after a deployment fate.  
E. Send an email to a customer of an online store after payment is complete

**Answer:** DE

**NEW QUESTION 38**

- (Exam Topic 2)

In the test-driven development model, what is changed after a test fails?

- A. test  
B. schedule  
C. project requirements  
D. code

**Answer:** D

**Explanation:**

Reference:

<https://www.guru99.com/test-driven-development.html#:~:text=In%20simple%20terms%2C%20test%20cases,c>

**NEW QUESTION 43**

- (Exam Topic 2)

Drag and drop the code from the bottom onto the box where the code is missing in the Bash script to complete the missing assignment.

```
#!/bin/bash

= 'date +%b-%d-%y'

= /home/usr/path/backup-$BACKUPTIME.tar.gz

= /home/usr/path/data_folder

tar -cpzf $DESTINATION $SOURCEFOLDER
```

BACKUPTIME

SOURCEFOLDER

DESTINATION

A. Mastered

B. Not Mastered

**Answer:** A

**Explanation:**

```
#!/bin/bash

BACKUPTIME = 'date +%b-%d-%y'

DESTINATION = /home/usr/path/backup-$BACKUPTIME.tar.gz

SOURCEFOLDER = /home/usr/path/data_folder

tar -cpzf $DESTINATION $SOURCEFOLDER
```

BACKUPTIME

SOURCEFOLDER

DESTINATION

**NEW QUESTION 47**

- (Exam Topic 2)

Refer to the exhibit.



```
Code:
import requests

url = 'https://en.wikipedia.org/api/rest_v1/page/title/Cisco_Systems'
s = requests.Session()

def get_json(session=None, url="https://example.com"):
    try:
        if not session or type(session) is not requests.sessions.Session:
            raise Exception("Invalid session type")

        r = session.get(url)

        if r.status_code < 200 or r.status_code > 307:
            raise Exception("Status Code not within 2xx and 3xx")

        return r.json()

    except requests.exceptions.RequestException as e:
        raise e("Request failed")
    finally:
        session.close()

if __name__ == "__main__":
    items = get_json(session=s, url=url)
    [ ]

payload:
{'items': [{'title': 'Cisco Systems', 'page_id': 51746, 'rev': 930604297,
'tid': '58b40b30-20e7-11ea-a7a9-f1850c7cfe85', 'namespace': 0, 'user_id':
19450869, 'user_text': 'Dhruvh', 'timestamp': '2019-12-13T16:47:52Z', 'comment': '/* 1984-1995: Origins
and initial growth */', 'tags': [], 'restrictions': [], 'page_language':
'en', 'redirect': False}]}
```

Which command needs to be placed on the box where the code is missing to output the value of page\_id in the Python 3.7 script?

A)

```
print(items['items']['page_id'])
```

B)

```
print(items.get('items').get('page_id'))
```

C)

```
print(items.get('items')[0].get('page_id'))
```

D)

```
print(items['items']['page_id'].keys())
```

- A. Option A
- B. Option B
- C. Option C
- D. Option D

**Answer: C**

#### NEW QUESTION 50

- (Exam Topic 2)

A developer creates a script that configured multiple Cisco IOS XE devices in a corporate infrastructure. The internal test environment is unavailable, and no maintenance window is available to test on a low-priority production environment. Which resource is used to test the code before it is applied to the production environment?

- A. Code Exchange
- B. Cisco DevNet Learning Labs
- C. Cisco DevNet Sandbox
- D. Cisco Support

**Answer: C**

#### Explanation:

Reference: <https://developer.cisco.com/site/sandbox/>

#### NEW QUESTION 53

- (Exam Topic 2)

How does a synchronous API request differ from an asynchronous API request?



**Answer:** D

**Explanation:**

[https://docs.docker.com/get-started/02\\_our\\_app/](https://docs.docker.com/get-started/02_our_app/)

**NEW QUESTION 62**

- (Exam Topic 2)

Which platform is used to programmatically create a space and invite users for collaboration?

- A. Cisco Intersight
- B. Cisco Finesse
- C. Cisco Webex
- D. Cisco UCM

**Answer:** C

**NEW QUESTION 64**

- (Exam Topic 2)

Where is an IP packet routed if the packet does not match any routes in the routing table?

- A. firewall
- B. load balancer
- C. central switch
- D. default gateway

**Answer:** D

**NEW QUESTION 68**

- (Exam Topic 2)

Refer to the exhibit.

Returns the wireless lan controller info with given device ID:

```
{
  "response": {
    "adminEnabledPorts": [ 0 ],
    "apGroupName": "string",
    "deviceId": "string",
    "ethMacAddress": "string",
    "flexGroupName": "string",
    "id": "string",
    "instanceTenantId": "string",
    "instanceUuid": "string",
    "lagModeEnabled": true,
    "netconfEnabled": true,
    "wirelessLicenseInfo": "ADVANTAGE",
    "wirelessPackageInstalled": true
  },
  "version": "string"
}
```

Drag and drop the code from the bottom onto the blanks in the code to construct a cURL command using the Cisco DNA Center API. which will provide the details of a WLAN controller with Id af397748444. Not at options are used.

**Answer Area**

```
curl -L --request GET \
--url https://dna/intent/api/v1/ / / \
--header 'Content-Type: application/json' \
--header 'Accept:application/json'
```

network-device

id

wireless

wireless-info

controller

details

- A. Mastered
- B. Not Mastered

**Answer:** A

**Explanation:**

Diagram Description automatically generated

**NEW QUESTION 72**

- (Exam Topic 2)

Why is refactoring done during test-driven development?

- A. to enable larger objects and longer methods
- B. to improve maintainability and readability
- C. to ensure that the previous uses of the objects are explained
- D. to ensure the duplication of essential code

**Answer: B**

**NEW QUESTION 76**

- (Exam Topic 2)

An engineer must configure Cisco Nexus devices and wants to automate this workflow. The engineer enables the Cisco NX-OS REST API to configure the devices by using an Ansible playbook. Before running the code, which resource must be used to verify that the code works correctly?

- A. Cisco NX-OS SDK
- B. Cisco Learning Labs
- C. Cisco Code Exchange
- D. Cisco Modeling Labs

**Answer: A**

**NEW QUESTION 78**

- (Exam Topic 2)

Refer to the exhibit.



OWASP threat does this example demonstrate?

- A. Broken access control
- B. SQL injection
- C. Man-in-the-middle
- D. Cross-site-scripting

**Answer: D**

**NEW QUESTION 82**

- (Exam Topic 2)

What is a benefit of model-driven programmability?

- A. It addresses the static architecture of traditional networks being decentralized and complex.
- B. By modeling data, it ensures that vast quantities of data are usable for monitoring.
- C. It provides a programmatic and standards-based way of writing configurations to any network device.
- D. It simplifies management and operations by decoupling the networking hardware from its control mechanism.

**Answer: D**

**NEW QUESTION 84**

- (Exam Topic 2)

What is a requirement when authenticating a RESTCONF API session with a router that runs Cisco IOS XE Software?

- A. No authentication is required.
- B. OAuth must be used.
- C. Basic authentication must be used.
- D. A token must be retrieved and the associated string must be embedded in the X-Auth-Token header.

**Answer: C**

**Explanation:**

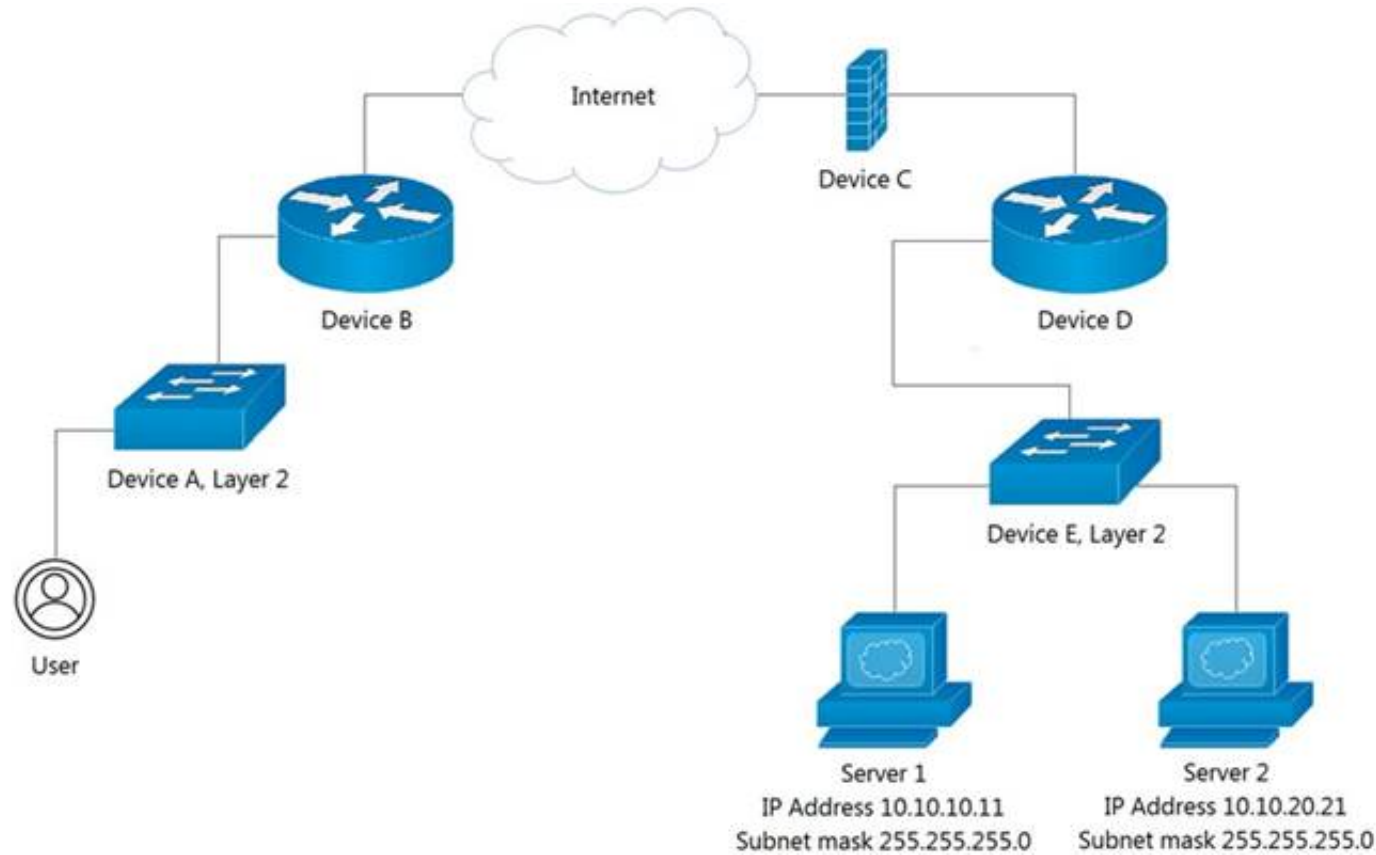
<https://www.cisco.com/c/en/us/td/docs/routers/csr1000/software/restapi/restapi/RESTAPIclient.html>

**NEW QUESTION 88**

- (Exam Topic 2)



Refer to the exhibit.



Which device limits traffic between server 1 and server 2?

- A. Device B
- B. Device C
- C. Device D
- D. Device E

**Answer: D**

#### NEW QUESTION 91

- (Exam Topic 2)

A developer is working on a feature for a new application. The changes in the existing branch named 'feat00304' must be integrated into a single commit with the current working primary branch named 'prodapp411926287'. Which git command must be used?

- A. git rebase --merge feat00304
- B. git merge --squash feat00304
- C. git push --rebase feat00304
- D. git checkout --squash feat00304

**Answer: B**

#### NEW QUESTION 93

- (Exam Topic 2)

Refer to the exhibit.

```

1  - hosts: servers
2    tasks:
3
4    - name: task1
5      apt:
6        name: apache2
7        state: absent
8
9    - name: task2
10     apt:
11       name: nginx
12       state: present
13
14    - name: task3
15     apt:
16       name: "*"
17       state: latest
  
```

A developer must check packages on web load balancers that use nginx packages. The developer updates the servers as required in Ansible inventory and prepares an Ansible playbook to automate this workflow on related servers. Which process is being automated by the Ansible playbook?



- A. verifying that nginx is installed only if apache2 is unavailable on the system, and then updating all the other packages
- B. verifying, without installing, that apache2 is unavailable and that nginx is installed, and then updating the repository to the latest version
- C. uninstalling the apache2 server, installing the nginx server, and then updating all the packages to the latest version
- D. installing nginx, uninstalling apache2, and then verifying that the package repository is at the latest version

**Answer: B**

#### NEW QUESTION 94

- (Exam Topic 2)

What is a difference between a synchronous API and an asynchronous API?

- A. An asynchronous API can make offline calls while synchronous APIs do not have this capability.
- B. Synchronous API calls are returned immediately while asynchronous calls do not guarantee an immediate response.
- C. Synchronous API calls require an authentication header to be sent while asynchronous calls do not require authentication.
- D. An asynchronous API can make a larger number of calls in a specified time period than a synchronous API.

**Answer: B**

#### Explanation:

Reference:

<https://stackoverflow.com/questions/36213948/what-is-the-difference-between-asynchronous-calls-and-callback>

#### NEW QUESTION 95

- (Exam Topic 2)

Several teams at a company are developing a new CRM solution to track customer interactions with a goal of improving customer satisfaction and driving higher revenue. The proposed solution contains these components:

- MySQL database that stores data about customers
- HTML5 and JavaScript UI that runs on Apache
- REST API written in Python

What are two advantages of applying the MVC design pattern to the development of the solution? (Choose two.)

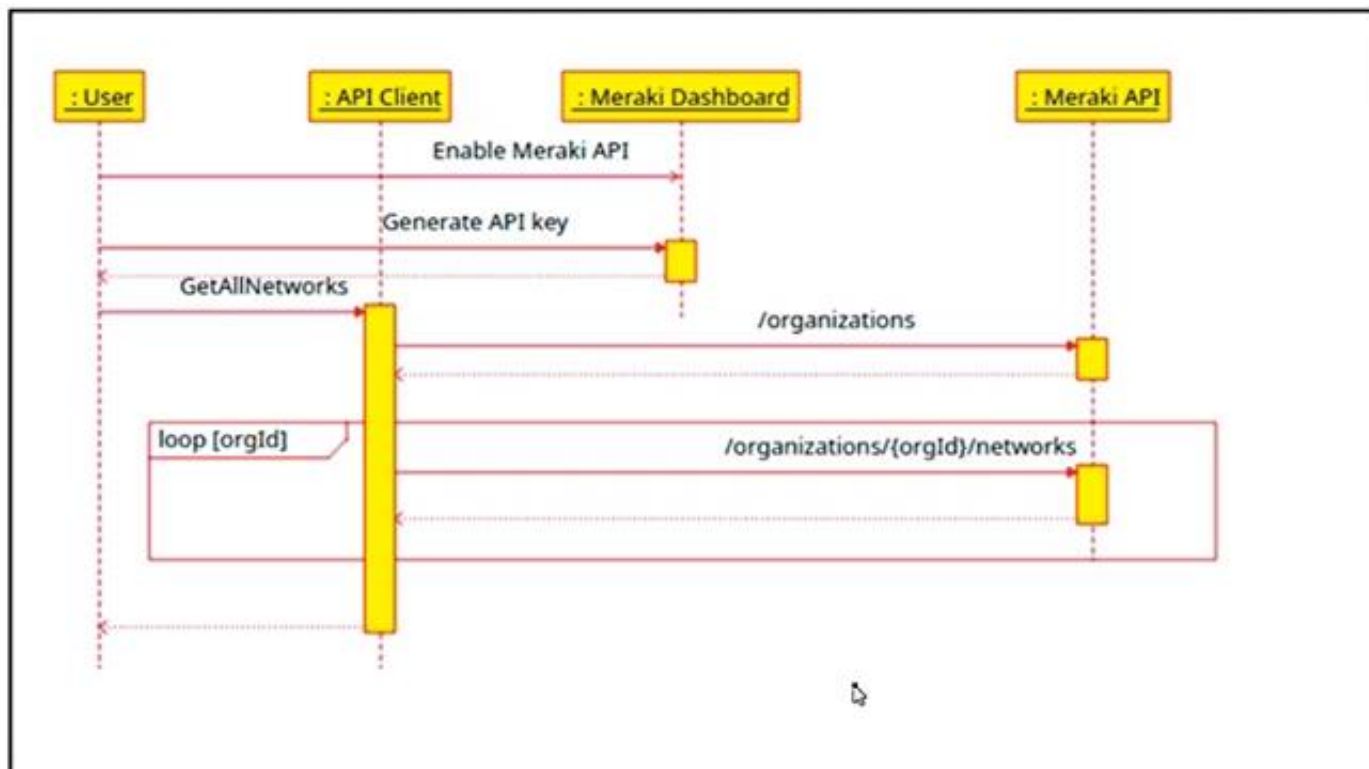
- A. to enable multiple views of the same data to be presented to different groups of users
- B. to provide separation between the view and the model by ensuring that all logic is separated out into the controller
- C. to ensure data consistency, which requires that changes to the view are also made to the model
- D. to ensure that only one instance of the data model can be created
- E. to provide only a single view of the data to ensure consistency

**Answer: BD**

#### NEW QUESTION 98

- (Exam Topic 2)

Refer to the exhibit.



The Cisco Meraki API manages two organizations. In each organization, two independent networks are defined. How many calls to the /organizations/{orgId}/networks endpoint will be run parallel by the GetAllNetwork function of the API client?

- A. 1
- B. 2
- C. 4

**Answer: C**

#### NEW QUESTION 99

- (Exam Topic 2)

How are load balancers used in modern application deployment?

- A. Allow traffic to continue as new compute units are brought up and old compute units are taken down.

- B. Allow http and https traffic to continue as old compute units are discontinued before new units are brought up.
- C. Turn off traffic and take down compute units, then update and bring the compute units back up.
- D. Bring up new compute units, test the compute units, and switch the traffic from old units to new units.

**Answer:** D

#### NEW QUESTION 101

- (Exam Topic 2)

Refer to the exhibit.

```
>>> response_data = requests.get(base_url + request_url, cookies=cookies)
Traceback (most recent call last):
  File "<stdin>", line 1, in <module>
NameError: name 'requests' is not defined
>>>
```

A Python code has been written to query a device. The executed code results in the error shown. Which action resolves the problem?

- A. import json
- B. requests("GET", base\_url + request\_url, cookies=cookies)
- C. pip install requests
- D. import requests

**Answer:** D

#### NEW QUESTION 102

- (Exam Topic 2)

Which implementation creates a group of devices on one or more LANs that are configured to communicate as if they were attached to the same wire?

- A. WLAN
- B. VLAN
- C. IPsec
- D. HSRP

**Answer:** B

#### NEW QUESTION 105

- (Exam Topic 2)

Which tool allows changes to the configuration management toolset to be tested?

- A. Cisco VIRL
- B. NAPALM
- C. Ansible
- D. pyATS

**Answer:** D

#### NEW QUESTION 107

- (Exam Topic 2)

What does a load balancer distribute in a network environment?

- A. outgoing connections to the network
- B. incoming traffic across multiple servers
- C. different TCP connections to the routers
- D. traffic in the network by leveraging the switch architecture

**Answer:** B

#### NEW QUESTION 109

- (Exam Topic 2)

A developer created a new secure API and is testing the functionality locally. The API was added to a container for further testing, and other team members and applications need to connect to the API. Which command exposes the API in the container as port 8443 and allows connections external to the host?

- A. docker run -p 127.0.0.1:80:8443/tcp myapiservice
- B. docker run -p 0.0.0.0:443:8443/tcp myapiservice
- C. docker run -p 0.0.0.0:8443:443/tcp myapiservice
- D. docker run -p 127.0.0.1:443:8443/tcp myapiservice

**Answer:** C

#### NEW QUESTION 112

- (Exam Topic 2)

A file that already exists in a local repository is updated. Which command must be executed to ensure that the changes in the file are included in the next Git commit?

- A. git update

- B. git merge
- C. git add
- D. git rebase

**Answer:** A

#### NEW QUESTION 116

- (Exam Topic 2)

How does a developer create and switch to a new branch called "my-bug-fix" to develop a product fix?

- A. git checkout -b my-bug-fix
- B. git branch -b my-bug-fix
- C. git branch my-bug-fix
- D. git checkout my-bug-fix

**Answer:** A

#### Explanation:

<https://www.shellhacks.com/git-create-new-branch-and-checkout/>

#### NEW QUESTION 117

- (Exam Topic 2)

Which HTTP response code should be returned when the request is completed, but there is no content to send for the request?

- A. A.-100B.204C.302D.402

**Answer:** B

#### Explanation:

Reference: [https://developer.mozilla.org/en-US/docs/Web/HTTP/Status#successful\\_responses](https://developer.mozilla.org/en-US/docs/Web/HTTP/Status#successful_responses)

#### NEW QUESTION 118

- (Exam Topic 1)

Refer to the exhibit.

For CLI commands that support XML, the `clid()` method returns JSON output. An exception is thrown when XML is not used. Executes CLI commands. Takes CLI command string and returns show command output in a JSON form.

“

*Note: The “clid” API can be useful when searching the output of show commands using JSON tools as shown in the example.*

#### PYTHON

```
Example:
>>> import json
>>> from cli import *
>>> jversion = json.loads(clid("show
version"))
>>> jversion['bios_ver_str']
'08.06'
```

#### Arguments:

- `cmd`: Single CLI command or a batch of CLI commands. Delimiter for multiple CLI commands is a space followed by a semicolon. Configuration commands must be in a fully qualified form.

#### Returns:

- `string`: JSON-formatted output of show commands.

```
>>> from cli import *
>>> import json

>>>
>>> cli('configure terminal ; interface loopback 5 ; no shut')
''
>>> intflist=json.loads(clid('show interface brief'))
>>> i=0
>>> while i < len (intflist['TABLE_interface']['ROW_interface']):
...     intf=intflist['TABLE_interface']['ROW_interface'][i]
...     i=i+1
...     if intf['state'] == 'up':
...         print intf['interface']
```

The python interpreter and the Cisco python SDK are available by default in the Cisco NX-OS software. The SDK documentation shows how the cild() API can be used when working with working with JSON and XML. What are two effect of running the script? (Choose two.)

- A. configure interlace loopback 5
- B. issue shutdown on interface loopback 5
- C. show only the interfaces In the up status
- D. show only the interfaces in admin shut status
- E. show details for the TABLE interface

**Answer:** AC

**Explanation:**

Reference:

[https://www.cisco.com/c/en/us/td/docs/switches/datacenter/nexus9000/sw/7-x/programmability/guide/b\\_Cisco\\_](https://www.cisco.com/c/en/us/td/docs/switches/datacenter/nexus9000/sw/7-x/programmability/guide/b_Cisco_)

#### NEW QUESTION 123

- (Exam Topic 1)

Which two statements describe the traits of an asynchronous API call? (Choose two.)

- A. The order in which API calls return can be guaranteed
- B. A call to an API does not block the code, but rather it allows application processing to continue
- C. The end user can experience latency or performance lag while waiting for the API call to return
- D. Code execution blocks or waits for the call to an API to return.
- E. A callback function typically is used to process the response from an API call

**Answer:** BE

#### NEW QUESTION 124

- (Exam Topic 1)

What are two advantages of version control software? (Choose two.)

- A. It supports tracking and comparison of changes in binary formate files.
- B. It allows old versions of packaged applications to be hosted on the Internet
- C. It provides wiki collaboration software for documentation.
- D. It supports comparisons between revisions of source code files.
- E. It allows new team members to access the current code and history.

**Answer:** DE

#### NEW QUESTION 129

- (Exam Topic 1)

Refer to the exhibit.



```
class ucsm sdk . ucshandle . Uc sHandle ( ip , username , password , port = None , secure = None , proxy = None )
```

Bases: ucsm sdk . uc ssession . Uc sSession

[\[source\]](#)

Uc sHandle class is the user interface point for any Uc s related communication.

- Parameters:**
- **ip** (*str*) – The IP or Hostname of the UCS Server
  - **username** (*str*) – The username as configured on the UCS Server
  - **password** (*str*) – The password as configured on the UCS Server
  - **port** (*int or None*) – The port number to be used during connection
  - **secure** (*bool or None*) – True for secure connection, otherwise False
  - **proxy** (*str*) – The proxy object to be used to connect

Given the API documentation for the UCS SDK python class, Uc sHandle, which code snippet creates a handle instance?

```
#!/usr/bin/env python3
from ucsm sdk . ucshandle import Uc sHandle
handle = Uc sHandle ( " 10.1.2.254 " , " admin " , " password " ,
port = " 443 " , secure = True )
```

```
#!/usr/bin/env python3
import ucsm sdk . ucshandle . Uc sHandle
handle = Uc sHandle ( " 10.1.2.254 " , " admin " , " password " ,
port = 443 , secure = 1 )
```

```
#!/usr/bin/env python3
from ucsm sdk . ucshandle import Uc sHandle
handle = Uc sHandle ( ip = " 10.1.2.254 " , username = " admin " ,
password = " password " , port = 443 , secure = True )
```

```
#!/usr/bin/env python3
from ucsm sdk . ucshandle import Uc sHandle
handle = Uc sHandle ( " 10.1.2.254 " , " admin " , " password " ,
port = " 443 " , secure = 1 )
```

- A. Option A  
 B. Option B  
 C. Option C  
 D. Option D

Answer: C

#### NEW QUESTION 131

- (Exam Topic 1)

Which device is a system that monitors and controls incoming and outgoing network traffic based on predetermined security rules?

- A. Switch  
 B. Router  
 C. Firewall  
 D. Load balancer

Answer: C

#### NEW QUESTION 133

- (Exam Topic 1)

Refer to the exhibit.



```

1  ---
2  - hosts: {{ router }}
3    gather_facts: true
4    connection: local
5
6  tasks:
7    - ios_command
8      commands:
9        - show run
10     provider: "{{ router_credentials }}"
11     register: config
12
13   - copy:
14     content: "{{ config.stdout[0] }}"
15     dest: "etc/ansible/configs/command_{{ router_hostname }}.txt
16   ...

```

What is the effect of this Ansible playbook on an IOS router?

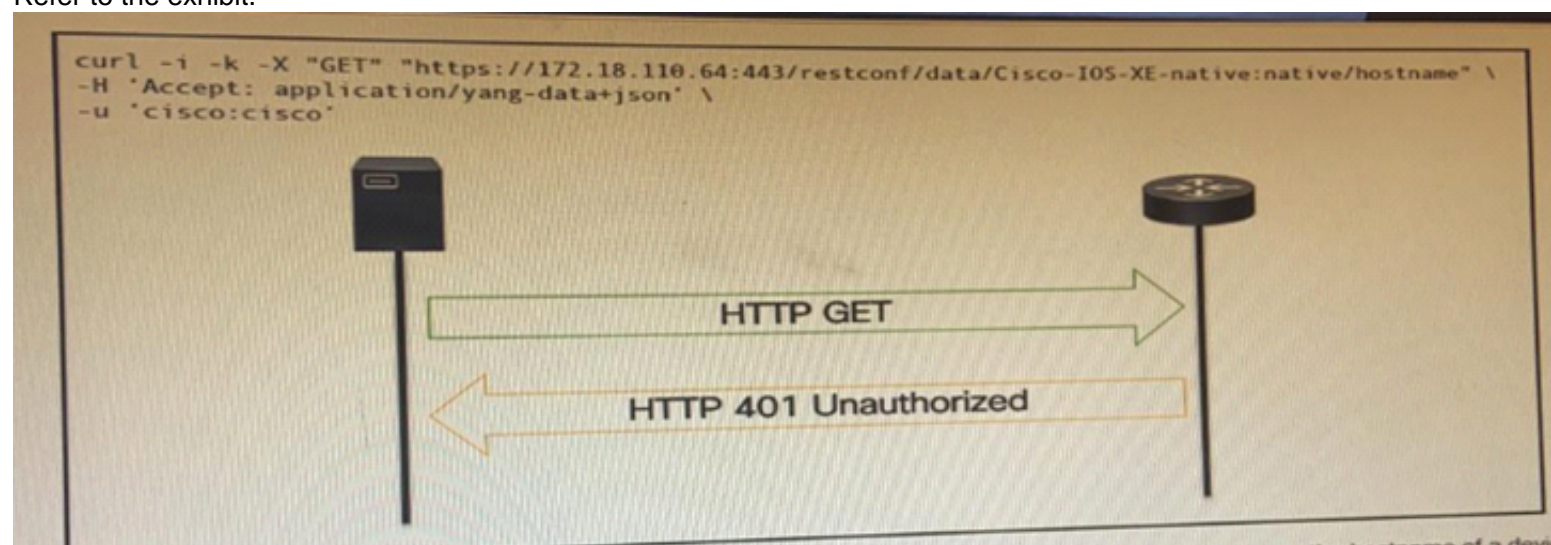
- A. A new running configuration is pushed to the IOS router.
- B. The current running configuration of the IOS router is backed up.
- C. The start-up configuration of the IOS router is copied to a local folder.
- D. A new start-up configuration is copied to the IOS router.

**Answer: B**

#### NEW QUESTION 135

- (Exam Topic 1)

Refer to the exhibit.



An administrator attempts to perform a GET using the Cisco IOS XE RESTCONF API to return the hostname of a device. The sequence diagram illustrated the HTTP message observed. Which change to the API request resolves the issue?

- A. Add Content-Type HTTP header with 'application/yang-data+json' using -H 'Content-Type: application/yang-data+json'.
- B. Use -u cisco: cisco instead of -u 'cisco: cisco'.
- C. Change the request method from -X "GET" to- X' POST".
- D. Remove the -H 'Accept: application/yang-data+json' HTTP header because it is not required.

**Answer: B**

#### NEW QUESTION 140

- (Exam Topic 1)

A developer needs to prepare the file README.md in the working tree for the next commit operation using Git. Which command needs to be used to accomplish this?

- A. git add README.md staging
- B. git -a README.md
- C. git add README.md
- D. git commit README.md

**Answer: C**

#### Explanation:

Reference: <https://teamtreehouse.com/community/committing-the-readmemd-file-to-repository>

#### NEW QUESTION 144

- (Exam Topic 1)

Refer to the exhibit.

```
[
  {
    "type": "fruit",
    "items": [
      {
        "color": "green",
        "items": [
          "kiwi",
          "grape"
        ]
      },
      {
        "color": "red",
        "items": [
          "strawberry",
          "apple"
        ]
      }
    ]
  },
  {
    "type": "vegs",
    "items": [
      {
        "color": "green",
        "items": [
          "lettuce"
        ]
      },
      {
        "color": "red",
        "items": [
          "pepper"
        ]
      }
    ]
  }
]
```

A REST API return this JSON output for a GET HTTP request, Which has assigned to a variable called "vegetables" Using python, which output is the result of this command?

```
print(filter(lambda l: l['type'] == 'fruit', vegetables)[0]['items'][0]['items'])
```

- A. Lettuce
- B. Kiwi
- C. ['kiwi', 'grape']
- D. {'color': 'green', 'items': ['kiwi', 'grape']}

**Answer: B**

#### NEW QUESTION 149

- (Exam Topic 1)

When using the Bash shell, how is the output of the devnet command saved to a file named "output.txt"?

- A. devnet & output.txt
- B. devnet > output.txt
- C. devnet < output.txt
- D. devnet | output.txt

**Answer: B**

**Explanation:**

Reference: <https://askubuntu.com/questions/420981/how-do-i-save-terminal-output-to-a-file>

### NEW QUESTION 152

- (Exam Topic 1)

Which service provides a directory lookup for IP addresses and host names?

- A. DNS
- B. DHCP
- C. SNMP
- D. NAT

**Answer: A**

### NEW QUESTION 154

- (Exam Topic 1)

Fill in the blanks to complete the python script to retrieve a list of network devices using the Cisco DNA center API.

```
import requests
url = "https://myDNAserver/dna/intent/api/v1/network-device"
payload = {}
headers = {'x-auth-token': 'eyJ0eXAiOiJKV1QiLCJhbGciOiJIUzI1NiJ9.eyJzdWIiOiI1ZDE0OWZkMjhlZTY2MmQ3NGM5YzE5ZTIiLCJmYzMCiSlmV4cCI6MTU3MjM3ODE5MCwidXNlcm5hbWUiOiJraXN371274739.zhK5LPQd501ZUpZI0IH_qrgOXtllNbxSFFF7JOEtRIs'}
}
response = requests.request( , url,
headers = , data = )
print(response.text.encode('utf8'))
```

- A. Mastered
- B. Not Mastered

**Answer: A**

#### Explanation:

Solution as below.

```
import requests
url = "https://myDNAserver/dna/intent/api/v1/network-device"
payload = {}
headers = {'x-auth-token': 'eyJ0eXAiOiJKV1QiLCJhbGciOiJIUzI1NiJ9.eyJzdWIiOiI1ZDE0OWZkMjhlZTY2MmQ3NGM5YzE5ZTIiLCJmYzMCiSlmV4cCI6MTU3MjM3ODE5MCwidXNlcm5hbWUiOiJraXN371387657.zhK5LPQd501ZUpZI0IH_qrgOXtllNbxSFFF7JOEtRIs'}
}
response = requests.request("GET", url,
headers = headers, data = payload)
print(response.text.encode('utf8'))
```

### NEW QUESTION 157

- (Exam Topic 1)

Refer to the exhibit.



List the clients that have used this network in the timespan

#### HTTP REQUEST

GET /networks/ {networkId}/clients

#### PARAMETERS

t0

The beginning of the timespan for the data. The maximum lookback period is 31 days from today.

timespan

The timespan for which the information will be fetched. If specifying timespan, do not specify parameter t0. The value must be in seconds and be less than or equal to 31 days. The default is 1 day.

perPage

The number of entries per page returned. Acceptable range is 3 – 1000. Default is 10.

startingAfter

A token used by the server to indicate the start of the page. Often this is a timestamp or an ID but it is not limited to those. This parameter should not be defined by client applications. The link for the first, last, prev, or next page in the HTTP Link header should define it.

endingBefore

A token used by the server to indicate the end of the page. Often this is a timestamp or an ID but it is not limited to those. This parameter should not be defined by client applications. The link for the first, last, prev, or next page in the HTTP Link header should define it.

```
base_url = "https://api.meraki.com/api/v0"
network_id = "L_12345678910"
api_key = "1098hadpfsiapsf8ahf8ohp"
requests.<item 1> (
    <item 2> + "/<item 3>/" + <item 4>, "<item 5>",
    headers = {
        "X-Cisco-Meraki-API-Key": <item 6> ,
        "Content-Type": "<item 7>"
    },
    <item 8>={"<item 9>":<item 10>})
```

Drag and drop the code from the left code from the left onto the item number on the right to complete the Meraki code to obtain a list of client which have used this network.

params	<item 1>
networks	<item 2>
timespan	<item 3>
get	<item 4>
432000	<item 5>
base_url	<item 6>
application/json	<item 7>
network_id	<item 8>
clients	<item 9>
api_key	<item 10>

- A. Mastered
- B. Not Mastered

Answer: A

**Explanation:**

1 - d, 2 - f, 3 - b, 4 - h, 5 - i, 6 - j, 7 - g, 8 - a, 9 - c, 10 - e

**NEW QUESTION 158**

- (Exam Topic 1)

Refer to the exhibit.

```
$ diff -u5 fish.py cat.py
--- fish.py      2020-01-02 09:41:02.840000000 +0100
+++ cat.py       2020-01-02 09:41:06.8859999800 +0100
@@ -160,11 +160,12 @@

    @single_request_timeout.setter
    def single_request_timeout(self, value):
        """The timeout (seconds) for a single HTTP REST API request."""
        check_type(value, int, optional=True)
-       assert value is None or value > 0
+       if value is not None and value <= 0:
+           raise ValueError("single_request_timeout must be positive integer")
        self._single_request_timeout = value

    @property
    def wait_on_rate_limit(self)
        """Automatic rate-limit handling.
```

The output of a unified diff when comparing two versions of a python script is shown. Which two "single\_request\_timeout ()"

A.

```
file: cat.py

160
161     @single_request_timeout.setter
162     def single_request_timeout(self, value):
163         """The timeout (seconds) for a single HTTP REST API request."""
164         check_type(value, int, optional=True)
165         assert value is None or value > 0
166         if value is not None and value <= 0:
167             raise ValueError("single_request_timeout must be positive integer")
168         self._single_request_timeout = value
169
```

B.

```
file: fish.py

160
161     @single_request_timeout.setter
162     def single_request_timeout(self, value):
163         """The timeout (seconds) for a single HTTP REST API request."""
164         check_type(value, int, optional=True)
165         assert value is None or value > 0
166         self._single_request_timeout = value
167
```

C.

```
file: cat.py

160
161     @single_request_timeout.setter
162     def single_request_timeout(self, value):
163         """The timeout (seconds) for a single HTTP REST API request."""
164         check_type(value, int, optional=True)
165         if value is not None and value <= 0:
166             raise ValueError("single_request_timeout must be positive integer")
167         self._single_request_timeout = value
168
169
```

D.



```

file: fish.py

160
161 @single_request_timeout.setter
162 def single_request_timeout(self, value):
163     """The timeout (seconds) for a single HTTP REST API request."""
164     check_type(value, int, optional=True)
165     self._single_request_timeout = value

```

E.

```

file: cat.py

172
173 @single_request_timeout.setter
174 def single_request_timeout(self, value):
175     """The timeout (seconds) for a single HTTP REST API request."""
176     check_type(value, int, optional=True)
177     if value is not None and value <= 0:
178         raise ValueError("single_request_timeout must be positive integer")
179     self._single_request_timeout = value
180

```

- F. Option A
- G. Option B
- H. Option C
- I. Option D
- J. Option E

Answer: BC

#### NEW QUESTION 159

- (Exam Topic 1)

What are two security benefits of a Docker-based application?

- A. easier to patch because Docker containers include only dependencies that the application requires
- B. prevents information leakage that can occur when unhandled exceptions are returned in HTTP responses
- C. allows for separation of application that traditionally run in the same host
- D. natively secures access to secrets that are used by the running application
- E. guarantees container images are secured and free of vulnerabilities

Answer: AC

#### NEW QUESTION 162

- (Exam Topic 1)

Refer to the exhibit.

```
docker run -p 3000:5000 f877cbf2ff33
```

A process on the host wants to access the service running inside this Docker container. Which port is used to make a connection?

- A. only outbound connections between 3000 and 5000 are possible
- B. port 3000
- C. any port between 3000 and 5000
- D. port 5000

Answer: B

#### NEW QUESTION 166

- (Exam Topic 1)

Refer to the exhibit.

```

def process_devices(dnac, token):
    url = "https://{}/api/v1/network-device".format(dnac['host'])
    headers["x-auth-token"] = token
    response = requests.get(url, headers=headers, verify=False)
    data = response.json()
    for item in data['response']:
        print(item["hostname"], " ", item["managementIpAddress"])

```

What is the function of the python script?

- A. Count and print the total number of available devices.
- B. Iterate over a list of network devices and write all device names and management IP addresses to an output file.
- C. Iterate over a list of network devices and write all device type and associated management IP address.

- D. For each device that is returned, display the device and, for each device, print the device name and management IP address.  
E. Loop through the returned list of network devices and, for each device, print the device name management IP address.

Answer: E

#### NEW QUESTION 171

- (Exam Topic 1)

Refer to Exhibit.

```
<books>
  <science>
    <biology>10.00</biology>
    <geology>9.00</geology>
    <chemistry>8.00</chemistry>
  </science>
  <math>
    <calculus>20.00</calculus>
    <algebra>12.00</algebra>
  </math>
</books>
```

Which JSON is equivalent to the XML-encoded data.

A)

```
{
  "books": {
    "science": {
      "biology": "10.00",
      "geology": "9.00",
      "chemistry": "8.00"
    },
    "math": {
      "calculus": "20.00",
      "algebra": "12.00"
    }
  }
}
```

B)

```
[ {
  "books": {
    "science": {
      "biology": "10.00",
      "geology": "9.00",
      "chemistry": "8.00"
    },
    "math": {
      "calculus": "20.00",
      "algebra": "12.00"
    }
  }
} ]
```

C)

```
{
  "books": [
    "science", {
      "biology": "10.00",
      "geology": "9.00",
      "chemistry": "8.00"
    },
    "math", {
      "calculus": "20.00",
      "algebra": "12.00"
    }
  ]
}
D)
{
  "books": [
    "science": {
      "biology": "10.00",
      "geology": "9.00",
      "chemistry": "8.00"
    },
    "math": {
      "calculus": "20.00",
      "algebra": "12.00"
    }
  ]
}
```

- A. Option A
- B. Option B
- C. Option C
- D. Option D

**Answer:** A

#### NEW QUESTION 174

- (Exam Topic 1)

How does requesting a synchronous API operation differ from requesting an asynchronous API operation?

- A. clients poll for the status of the execution of operations
- B. clients subscribe to a webhook for operation results
- C. clients can access the results immediately
- D. clients receive responses with a task id for further processing

**Answer:** C

#### NEW QUESTION 177

- (Exam Topic 1)

Which two statements about JSON and XML are true? (Choose two.)

- A. JSON objects are collection of key value pair.
- B. The syntax of JSON contains tags, elements, and attributes.
- C. JSON arrays are an unordered set of key value pairs.
- D. The syntax of XML contains tags, elements, and attributes.
- E. XML objects are collections of key-value pairs.

**Answer:** AD

#### NEW QUESTION 181

- (Exam Topic 1)

Which two items are Cisco DevNet resources? (Choose two.)

- A. TAC support
- B. Bitbucket
- C. Sandbox
- D. Software research



E. API Documentation

**Answer:** CE

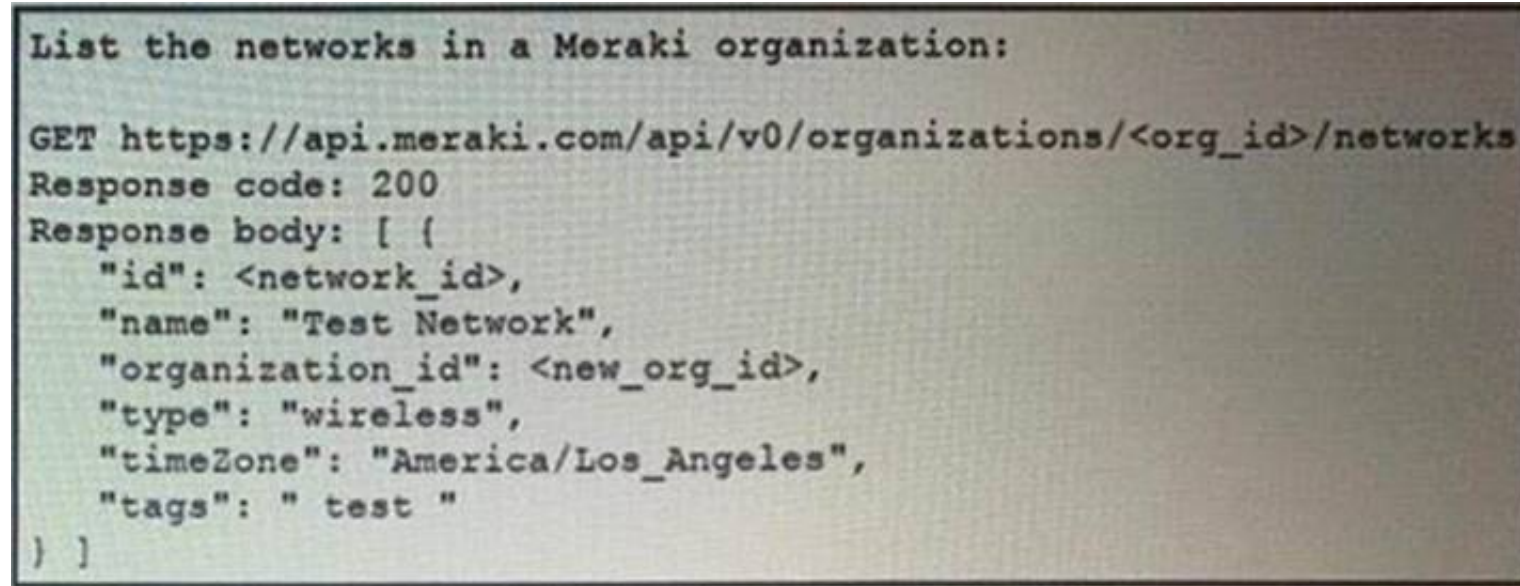
**Explanation:**

Reference: <https://developer.cisco.com/>

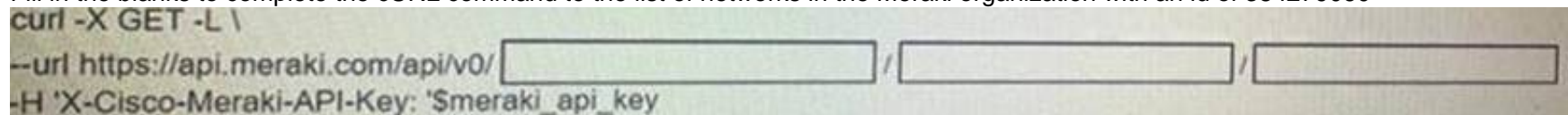
#### NEW QUESTION 182

- (Exam Topic 1)

Refer to the exhibit.



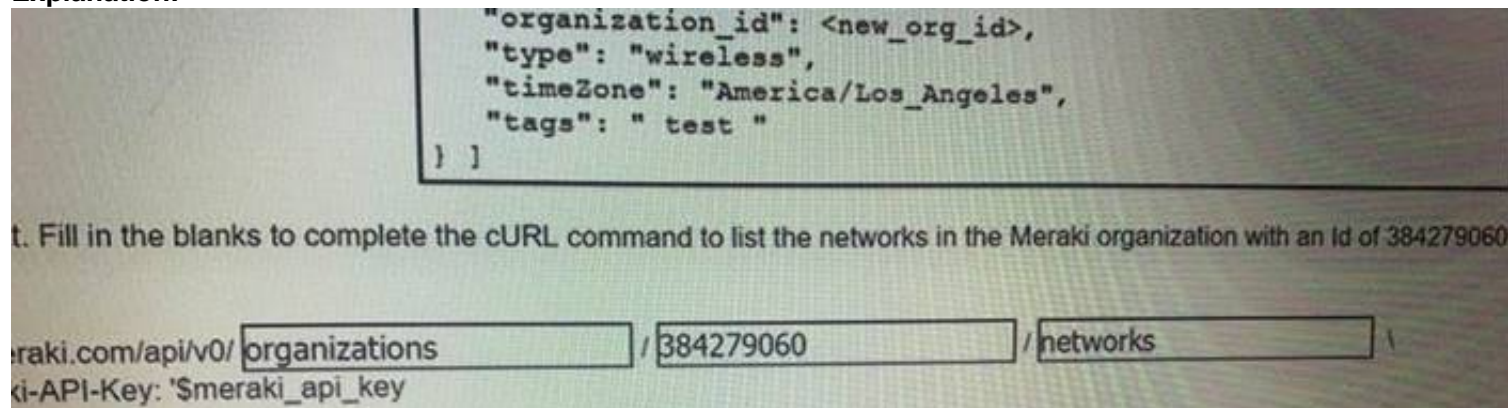
Fill in the blanks to complete the cURL command to the list of networks in the Meraki organization with an id of 384279060



- A. Mastered
- B. Not Mastered

**Answer:** A

**Explanation:**



#### NEW QUESTION 187

- (Exam Topic 1)

Which two statement describe the role of an artifact repository in a CI/CD pipeline? (Choose two.)

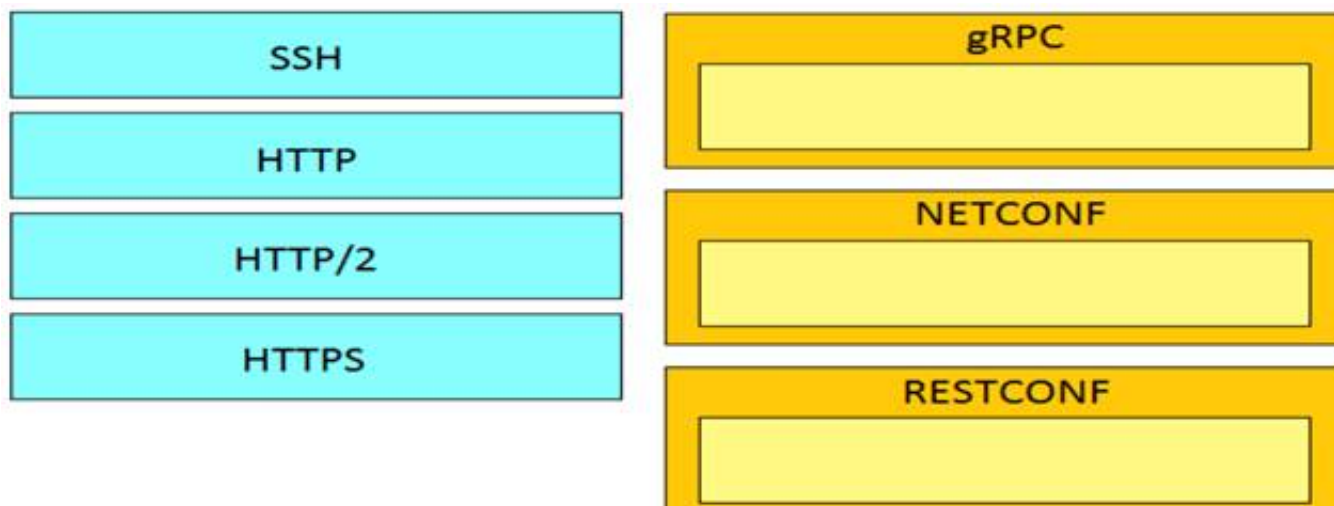
- A. An artifact repository allows to compare and merge changes in the source code of files involved in a build process.
- B. An artifact repository is needed only for CI/CD pipeline executed on a public cloud infrastructure.
- C. An artifact repository provides traceability, search, and management of binary files.
- D. An artifact repository is needed only for managing open source software.
- E. An artifact repository stores files needed and generated during the build process.

**Answer:** CE

#### NEW QUESTION 192

- (Exam Topic 1)

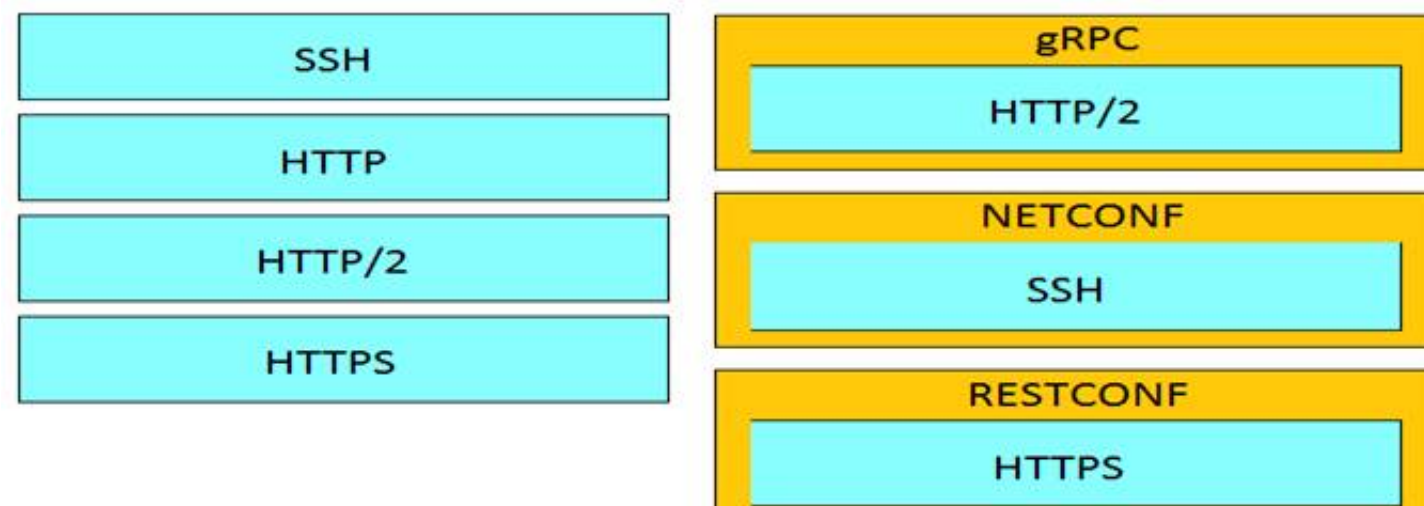
Drag and drop the network automation interfaces from the left onto the transport protocols that they support on the right. Not all options are used.



- A. Mastered
- B. Not Mastered

**Answer:** A

**Explanation:**



#### NEW QUESTION 196

- (Exam Topic 1)

In DNS, which record specifies an alias that refers to another name that ultimately resolves to an IP address?

- A. AAA
- B. SOA
- C. NS
- D. CNAME

**Answer:** D

**Explanation:**

Reference: <https://ns1.com/resources/dns-types-records-servers-and-queries>

#### NEW QUESTION 201

- (Exam Topic 1)

Which network device monitors incoming and outgoing traffic and decides whether to allow or block specific traffic based on a defined set of rules?

- A. switch
- B. load balancer
- C. reverse proxy
- D. firewall

**Answer:** D

#### NEW QUESTION 202

- (Exam Topic 1)

Which two statements are true about Cisco UCS manager, Cisco Intersight APIs? (Choose two.)

- A. Cisco Intersight API interactions can be encoded in XML or JSON and require an APIs key in the HTTP header for authentication.
- B. USC Director API interactions can be XML- or JSON-encoded and require an APLs key in the HTTP header for authentication.
- C. UCS manager API interactions are XML-encoded and require a cookie in the method for authentication.
- D. Cisco Intersight uses XML to encoded API interactions and requires an API key pair for authentication.
- E. UCS manager uses JSON to encode API interactions and utilizes Base64-encoded credentials in the HTTP header for authentication.

**Answer:** BC

**Explanation:**

Reference:

[https://www.cisco.com/c/en/us/td/docs/unified\\_computing/ucs/ucs-director/rest-api-getting-started-guide/6-5/cis](https://www.cisco.com/c/en/us/td/docs/unified_computing/ucs/ucs-director/rest-api-getting-started-guide/6-5/cis)



[https://www.cisco.com/c/en/us/td/docs/unified\\_computing/ucs/sw/api/b\\_ucs\\_api\\_book.pdf](https://www.cisco.com/c/en/us/td/docs/unified_computing/ucs/sw/api/b_ucs_api_book.pdf)

## NEW QUESTION 203

- (Exam Topic 1)

Refer to the exhibit.

### HTTP REQUEST

**POST** /organizations/ {organizationId}/networks

### PARAMETERS

#### name

The name of the new network.

#### type

The type of the new network. Valid types are wireless, appliance, switch, systemsManager, camera, cellularGateway, or a space-separated list of those for a combined network.

#### tags

A space-separated list of tags to be applied to the network.

#### timeZone

The timezone of the network. For a list of allowed timezones, please see the 'TZ' column in the table in [this article](#).

#### copyFromNetworkId

The ID of the network to copy configuration from. Other provided parameters will override the copied configuration, except type which must match this network's type exactly.

#### disableMyMerakiCom

Disables the local device status pages ([my.meraki.com](#), [ap.meraki.com](#), [switch.meraki.com](#), [wired.meraki.com](#)). Optional (defaults to false).

#### disableRemoteStatusPage

Disables access to the device status page ([http://\[device's LAN IP\]](#)). Optional. Can only be set if disableMyMerakiCom is set to false.

```
base_url = https://api.meraki.com/api/v0
org_id = 123456789
api_key = 1098hadpfsiapsf8ahf8ohp
network_name = "New Network"
requests.<item 1> (
    <item 2> + "/" + org_id + "/" + <item 4>,
    headers = {
        "X-Cisco-Meraki-API-Key": "<item 5>",
        "Content-Type": "<item 6>"
    },
    <item 7>=json.dumps ({ "name": <item 8>,
                          "type": "wireless switch"
                        })
)
```

Drag and drop the code from the left onto the item numbers on the right to complete the Meraki python script shown in the exhibit.

base_url	<item 1>
network_name	<item 2>
data	<item 3>
post	<item 4>
application/json	<item 5>
networks	<item 6>
api_key	<item 7>
organizations	<item 8>

- A. Mastered
- B. Not Mastered

Answer: A

Explanation:  
1 – D, 2 – A, 3 – H, 4 – F, 5 – G, 6 – E, 7 – C, 8 – B

NEW QUESTION 208  
- (Exam Topic 1)  
Which status code is used by a REST API to indicate that the submitted payload is incorrect?

- A. A.-400B.403C.405D.429

Answer: A

Explanation:  
Reference:  
<https://community.cisco.com/t5/application-centric/apic-rest-api-produces-inconsistent-response/td-p/2758230>

NEW QUESTION 209  
- (Exam Topic 1)  
In python, which expression checks whether the script returns a success status code when the Requests library is used?

- A. response.status\_code== requests.ok
- B. response.status\_code== requests.codes.ok
- C. response.code== requests.codes.ok
- D. response.status\_code ! == requests.codes.ok

Answer: B

Explanation:  
Reference: <https://realpython.com/python-requests/>

NEW QUESTION 212  
- (Exam Topic 1)  
Fill in the blanks to complete the Bash script in which each file in a directory is renamed to its SHA256 hash?

```
TARGET_DIR=/usr/local/certs
for f in [ ] [ ]; do
    [ ] `openssl sha -sha256 -r < $f | cut -f1 -d' '`
done
```

- A. Mastered
- B. Not Mastered

**Answer:** A

**Explanation:**

Check below the answer exact.

```
TARGET_DIR=/usr/local/certs
for f in $(ls $TARGET_DIR); do
  mv $(cat $f | openssl sha -sha256 -r < $f | cut -f1 -d' ')
done
```

**NEW QUESTION 216**

- (Exam Topic 1)

Which statement about authentication a RESTCONF API session with a router that runs Cisco IOS XE software is true?

- A. OAuth must be used.
- B. A token must be retrieved and the associated string must be embedded in the X-Auth-Token header.
- C. Basic authentication must be used.
- D. No authentication is required.

**Answer:** C

**NEW QUESTION 217**

- (Exam Topic 1)

An application calls a REST API and expects a result set of more than 550 records, but each time the call is made, only 25 are returned. Which feature limits the amount of data that is returned by the API?

- A. pagination
- B. payload limit
- C. rate limiting
- D. service timeouts

**Answer:** A

**NEW QUESTION 222**

- (Exam Topic 1)

Which statement describes the benefit of using functions in programming?

- A. Functions allow problems to be split into simpler, smaller groups, and reduce code repetition, which makes the code easier to read.
- B. Functions ensure that a developer understands the inner logic contained before using them as part of a script or application.
- C. Functions create the implementation of secret and encrypted algorithms.
- D. Functions store mutable values within a script or application.

**Answer:** A

**NEW QUESTION 223**

- (Exam Topic 1)

What is the outcome of executing this command?

```
git clone ssh://john@exmaple.com/path/to/my-project_git
```

- A. Creates a local copy of a repository called "my project"
- B. Creates a copy of a branch called "my project"
- C. Initiates a new Git repository called "my project"
- D. Creates a new branch called "my project"

**Answer:** A

**Explanation:**

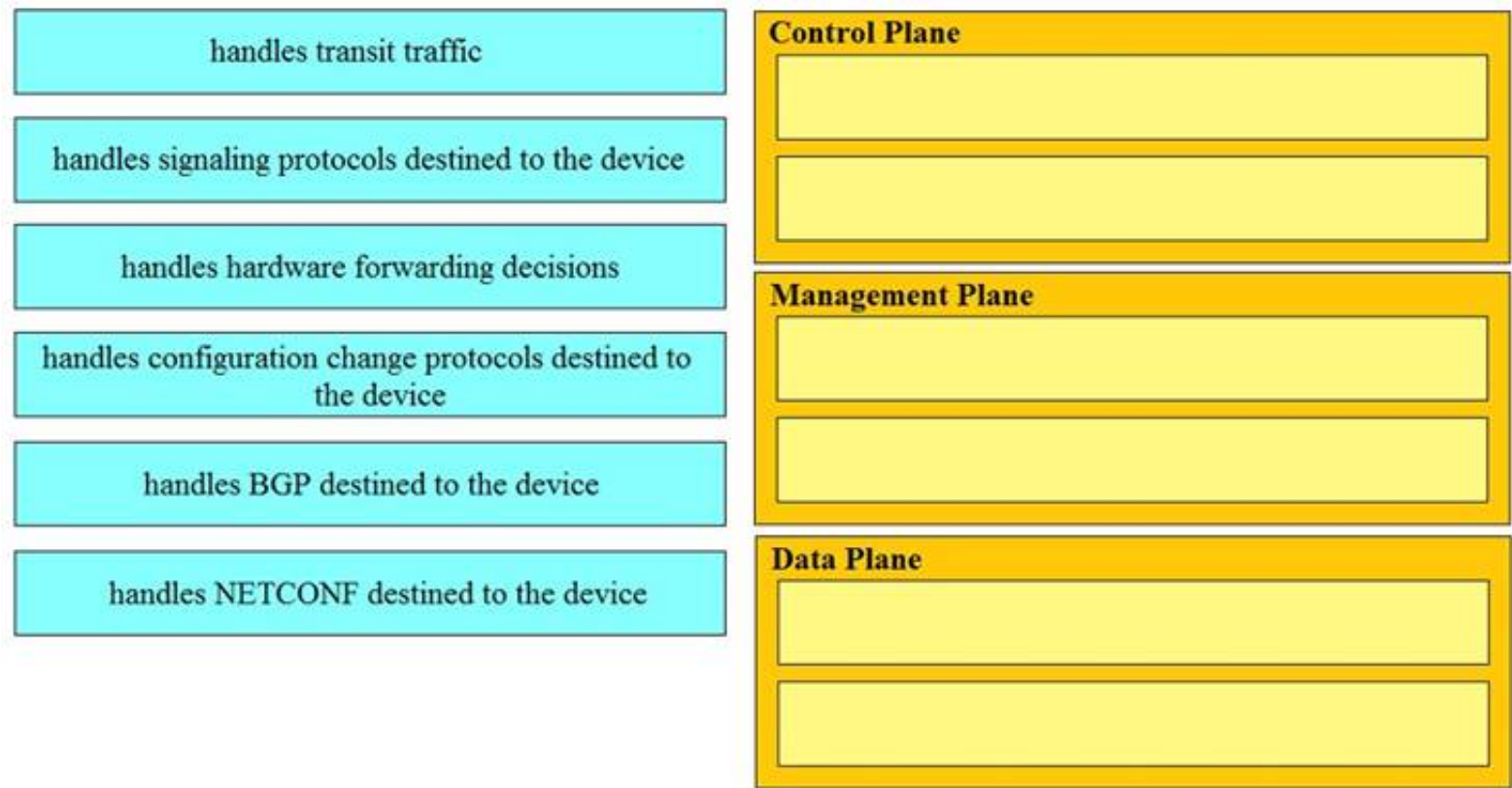
Reference: <https://www.atlassian.com/git/tutorials/setting-up-a-repository/git-clone>

**NEW QUESTION 225**

- (Exam Topic 1)

Drag and drop the function on the left onto the type of plane that handles the function on the right.

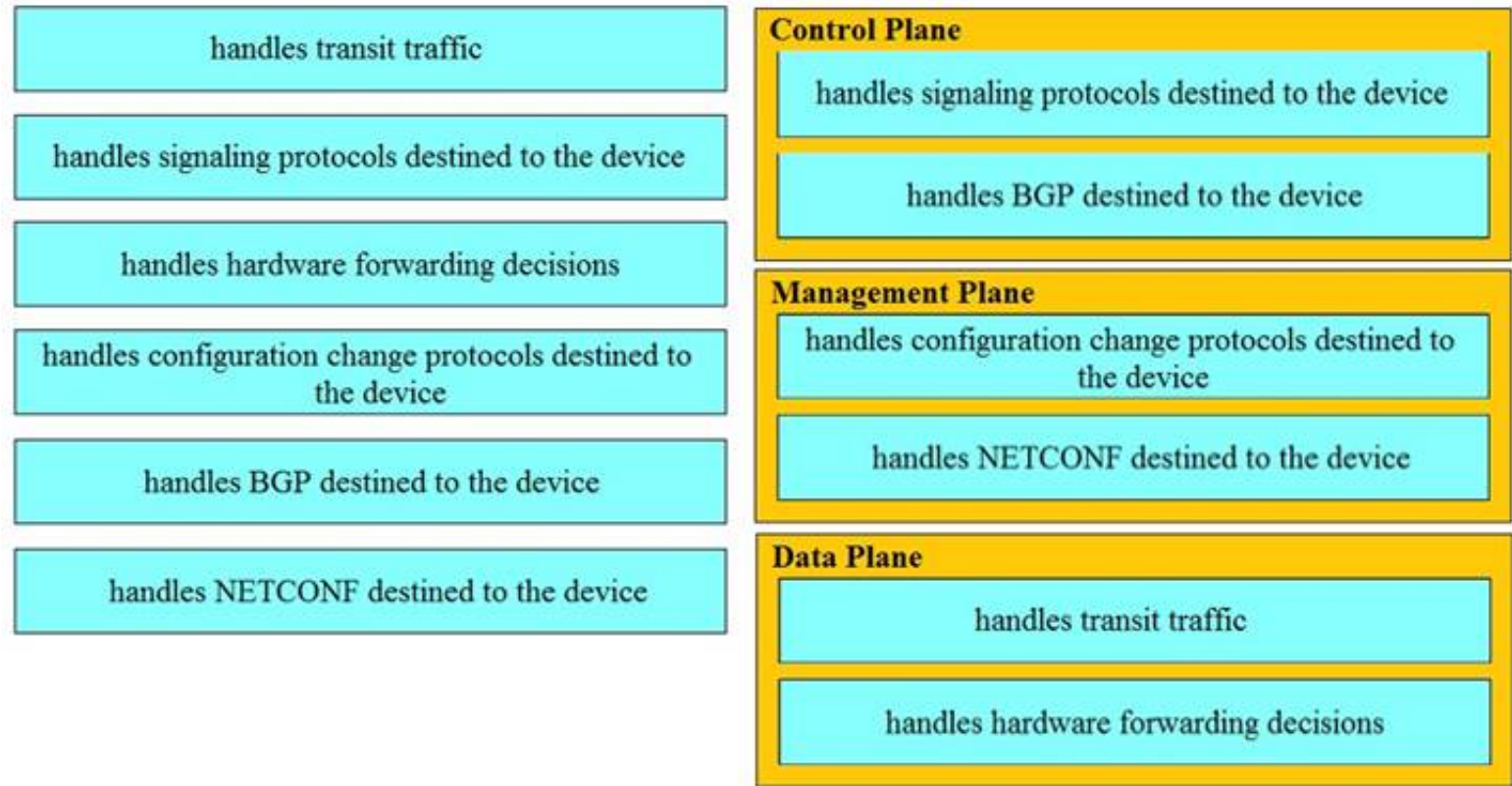




- A. Mastered
- B. Not Mastered

Answer: A

Explanation:



NEW QUESTION 226

- (Exam Topic 1)  
What are the two purposes for using a VLAN in a network? (Choose two)

- A. It is used to create the routing table.
- B. It creates a collection of MAC addresses.
- C. It is used for VM network traffic.
- D. It segments a network.
- E. It creates a broadcast domain.

Answer: DE

NEW QUESTION 227

- (Exam Topic 1)  
Which two statements describe the advantages of using a version control system? (Choose two.)

- A. It allows for branching and merging so that different tasks are worked on in isolation before they are merged into a feature or master branch.
- B. It allows multiple engineers to work against the same code and configuration files and manage differences and conflicts.
- C. It provides tooling to automate application builds and infrastructure provisioning.
- D. It allows developers to write effective unit tests.
- E. It provides a system to track User Stories and allocate to backlogs.

Answer: AB



#### NEW QUESTION 231

- (Exam Topic 1)

What is the purpose of a firewall in application deployment?

- A. adds TLS support to an application that does not support it natively
- B. forwards traffic to a pool of instances of the application
- C. provides translation for an application's hostname to its IP address
- D. limits traffic to only ports required by the application

**Answer:** D

#### NEW QUESTION 232

- (Exam Topic 1)

Which two protocols are used to apply a configuration change on a Cisco IOS XE device? (Choose two)

- A. CCX
- B. RESTCONF
- C. NETCONF
- D. HSRP
- E. CDP

**Answer:** BC

#### NEW QUESTION 235

- (Exam Topic 1)

Refer to the exhibit.

```
#!/bin/bash
<item 1>='date +%b-%d-%y'

<item 2>=/home/usr/path/backup-$BACKUPTIME.tar.gz

<item 3>=/home/usr/path/data_folder

tar -cpzf $DESTINATION $SOURCEFOLDER
```

Drag and drop the variables from the left onto the item numbers on the right that match the missing assignments in the exhibit.

BACKUPTIME	<item 1>
SOURCEFOLDER	<item 2>
DESTINATION	<item 3>

- A. Mastered
- B. Not Mastered

**Answer:** A

#### Explanation:

1 – A, 2 – C, 3 – B

Reference: <https://medium.com/@fotios.floros/linux-backup-script-1722cc9c2bf6> (use tar in order to create your backup file)

#### NEW QUESTION 239

- (Exam Topic 1)

What is the Git command to delete a local branch named “experiment” without a warning?

- A. git branch -n experiment
- B. git branch -rm experiment
- C. git branch -f experiment
- D. git branch -D experiment

**Answer:** D

#### Explanation:

Reference: <https://www.atlassian.com/git/tutorials/using-branches>

#### NEW QUESTION 243

- (Exam Topic 1)

Fill in the blanks to complete the statement.

Cisco DNA provide the capability to send an HTTP \_\_\_\_\_ request to the API endpoint [https://DNA-c\\_API\\_ADDRESS/api/vi/network-device/](https://DNA-c_API_ADDRESS/api/vi/network-device/) and receive the network \_\_\_\_\_ list in \_\_\_\_\_ format.

- A. Mastered
- B. Not Mastered

**Answer: A**

**Explanation:**

Solution below as

Cisco DNA Center provides the capability to send an HTTP GET request to the API endpoint [https://DNA-c\\_API\\_ADDRESS/api/v1/network-device/](https://DNA-c_API_ADDRESS/api/v1/network-device/) and receive the network device list in JSON format

#### NEW QUESTION 245

- (Exam Topic 1)

Refer to the exhibit.

```
<books>
  <science>
    <biology>10.00</biology>
    <geology>9.00</geology>
    <chemistry>8.00</chemistry>
  </science>
  <math>
    <calculus>20.00</calculus>
    <algebra>12.00</algebra>
  </math>
</books>
```

Which JSON is equivalent to the XML –encoded data?

- A. [ {  
   "books": {  
     "science": {  
       "biology": "10.00",  
       "geology": "9.00",  
       "chemistry": "8.00"  
     },  
     "math": {  
       "calculus": "20.00",  
       "algebra": "12.00"  
     }  
   }  
 } ]
- B. {  
   "books": [  
     "science": {  
       "biology": "10.00",  
       "geology": "9.00",  
       "chemistry": "8.00"  
     },  
     "math": {  
       "calculus": "20.00",  
       "algebra": "12.00"  
     }  
   ]  
 }

```
C. {
  "books": [
    "science": {
      "biology": "10.00",
      "geology": "9.00",
      "chemistry": "8.00"
    },
    "math": {
      "calculus": "20.00",
      "algebra": "12.00"
    }
  ]
}

D. {
  "books": [
    "science", {
      "biology": "10.00",
      "geology": "9.00",
      "chemistry": "8.00"
    },
    "math", {
      "calculus": "20.00",
      "algebra": "12.00"
    }
  ]
}
```

- A. Option A
- B. Option B
- C. Option C
- D. Option D

Answer: A

NEW QUESTION 248

- (Exam Topic 1)

Drag and drop the descriptions from the left onto correct application deployment models on the right.

provides a low-latency compute capability close to the data source

environment where you pay only for the resources that you consume

offers a self-service, elastic compute environment from a dedicated set of physical resources

provides an approach for overflow traffic to burst out to meet peak demands

shared compute platform that is offered over the Internet

Public Cloud

Private Cloud

Hybrid Cloud

Edge Computing

- A. Mastered
- B. Not Mastered

Answer: A

Explanation:



1 – B, 2 – E, 3 – C, 4 – D, 5 – A

### NEW QUESTION 250

- (Exam Topic 1)

Fill in the blanks to complete the cURL command that invokes a RESTful API to retrieve a resource in JSON format using OAuth.

```
curl -X [ ] -H "[ ]: application/json" \
-H "[ ]: Bearer AbCdEf123456" https://localhost/api/myresource
```

- A. Mastered
- B. Not Mastered

**Answer: A**

**Explanation:**

```
curl -X GET [ ] -H "Accept [ ]: application/json" \
-H "Authorization [ ]: Bearer AbCdEf123456" https://localhost/api/myresource
```

Reference: <https://webcache.googleusercontent.com/search?q=cache:Se6d2trvMsEJ:https://blogs.cisco.com/developer/secu>

### NEW QUESTION 255

- (Exam Topic 1)

Refer to the exhibit.

```

bash-3.2$ curl -H "Content-Type: application/ison" -H "Authorization: Bearer
A - Fj2zzykEa09lic9GK2j8LtE1HklH6oRHPQdw1Pat60i7ndtHHnWzL2b5PQmG14Kk_B9ei5ISAClY7-
NarA-2n9H-tGgt-SxQ39iDejgcs" -i -d "{ \"roomId\":
B - \"Y2geK53sjELknosrC7SwQ5ZGL99pHgiuScB7DfNvU8Xx4wDKLiPORcEkryAnM3QmK9LQZsPOG4\"
, \"text\": \"test2\" }" -X POST https://api.ciscopark.com/v1/messages
D - HTTP/1.1 200 OK
Via: 1.1 linker
Transfer-Encoding: chunked
TrackingID: ROUTER_5E0FE283-63EB-01BB-00ED-806BF1BD00ED
E - Date: Sat, 01 Jan 2020 00:55:31 GMT
Server: Redacted
Content-Type: application/json; charset=UTF-8
Vary: Accept-Encoding
Strict-Transport-Security: max-age=63072000; includedSybDomains; preload

{"id":
YCpJf3aVovyBYcbn7lSdesNkKcgN5tlExdc6dcnPtl4Va05NfCh9MG17j0tWXQLoIPuoJ73uu7JdoX
q9 ", "roomId":
F - Y2geK53sjELknosrC7SwQ5ZGL99pHgiuScB7DfNvU8Xx4wDKLiPORcEkryAnM3QmK9LQZsPOG4
", "roomType": "group", "text": "test2", "personId":
YcgYzL6XgtyfW81XXwqfKf7whfj23KuqWt4kLWkbb3JwEJBlVMZOkIvyDdFoppb0einNjl11FcMyy5
wD", "personEmail": "user@webex.com", "created": "2020-01-01T00:55:32.492Z"}
bash-3.2$
  
```

Drag and drop the descriptors from the left onto the correct parts of the API request and response on the right.

Response Headers	A
HTTP Request	B
HTTP Response	C
Request Payload	D
Request Headers	E
Response Payload	F



- A. Mastered
- B. Not Mastered

Answer: A

Explanation:

A – E, B – D, C – B, D – C, E – A, F – F

NEW QUESTION 258

- (Exam Topic 1)

Fill in the blanks to complete the python script to request a service ticket using the APIC-EM rest API for the user “devnetuser”.

```
import requests
import json
controller = 'devnetapi.cisco.com/sandbox/apic_em'
url = "https://" + controller + "/api/va/ticket"
payload = { 'username': ' ', 'password' '371274738'}
header = { 'Content-type': 'application/json' }
response =  post(url, data=json.dumps(payload), \
headers= , verify=False)
r_json = response.json()
print(r_json)
ticket = r_json["response"]["serviceTicket"]
print(ticket)
```

- A. Mastered
- B. Not Mastered

Answer: A

Explanation:

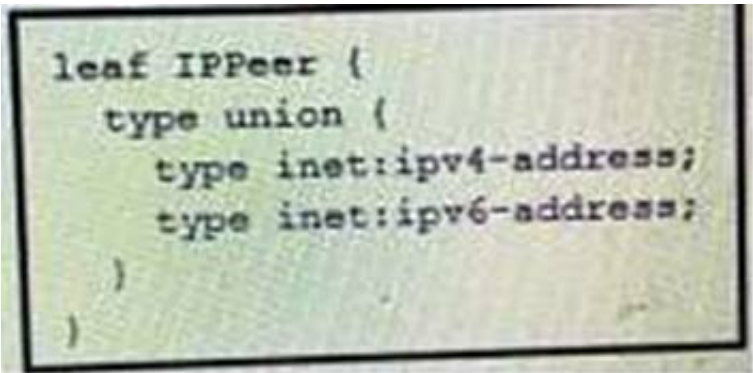
```
import requests
import json
controller = 'devnetapi.cisco.com/sandbox/apic_em'
url = "https://" + controller + "/api/va/ticket"
payload = { 'username': 'devnetuser', 'password' '371387657'}
header = { 'Content-type': 'application/json' }
response = requests.post(url, data=json.dumps(payload), \
headers= header, verify=False)
r_json = response.json()
print(r_json)
ticket = r_json["response"]["serviceTicket"]
print(ticket)
```

Reference: <https://developer.cisco.com/docs/apic-em/#!hello-world>

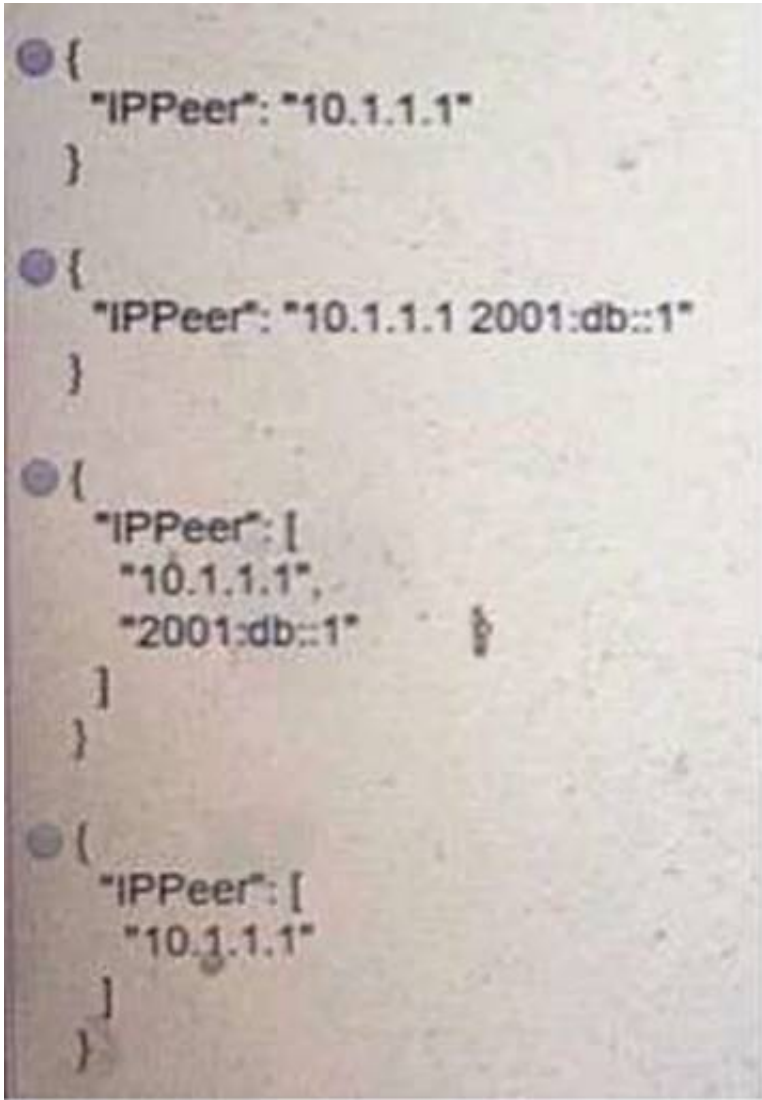
NEW QUESTION 260

- (Exam Topic 1)

Refer to the exhibit.



What is the value of the node defined by this YANG structure?



- A. Option A
- B. Option B
- C. Option C
- D. Option D

**Answer:** D

**Explanation:**

<https://tools.ietf.org/html/rfc7950#section-9.12>

**NEW QUESTION 263**

- (Exam Topic 1)

Which is an advantage of using network programmability?

- A. It removes CLI access for devices.
- B. It provides for more scalable and replicable network provisioning.
- C. Manual configuration is faster.
- D. No cloud abstraction occurs.

**Answer:** B

**NEW QUESTION 265**

- (Exam Topic 1)

Package updates from a local server fail to download. However, the same updates work when a much slower external repository is used. Why are local updates failing?

- A. The update utility is trying to use a proxy to access the internal resource.
- B. The Internet connection is too slow.
- C. The Internet is down at the moment, which causes the local server to not be able to respond.
- D. The server is running out of disk space.

**Answer:** A

**NEW QUESTION 269**

- (Exam Topic 1)

Refer to the exhibit.

```
def get_result()

    url = "https://sandboxdnac.cisco.com/dna/system/api/v1/auth/token"

    resp = requests.post(url, auth=HTTPBasicAuth(DNAC_USER, DNAC_PASSWORD))

    result = resp.json()['Token']

    return result
```

What does the python function do?

- A. It returns DNAC user and password.
- B. It returns HTTP Basic Authentication.
- C. It returns an authorization token.
- D. It reads a token from a local JSON file and posts the token to the DNAC URL.

**Answer:** C

#### NEW QUESTION 271

- (Exam Topic 1)

A company has written a script that creates a log bundle from the Cisco DNA Center every day. The script runs without error and the bundles are produced. However, when the script is run during business hours, report poor voice quality of phones calls. What explains this behavior?

- A. The application is running in the Voice VLAN and causes delays and jitter in the subnet.
- B. The speed and duplex settings in Cisco DNA Center are set incorrectly, which causes the transfer to be too slow.
- C. 9 The script is written in a low-level programming language where there is no memory safety
- D. This causes a buffer overflow and disruption on the network.
- E. Generating the logs causes the CPU on the network controller to spike, which causes delays in forwarding the voice IP packets.

**Answer:** D

#### NEW QUESTION 272

- (Exam Topic 3)

What is a characteristic of the Cisco Finesse platform?

- A. Applications allow services to be invoked on a network triggered event.
- B. The platform provides a ready-to-go platform for HD video and audio conferencing.
- C. Applications are added to the platform from the desktop remotely.
- D. The platform includes an enterprise-class IM engine.

**Answer:** A

#### Explanation:

A characteristic of the Cisco Finesse platform is that applications allow services to be invoked on a network triggered event. Cisco Finesse is a next-generation agent and supervisor desktop designed to provide a rich, browser-based experience for contact center agents and supervisors. It offers a flexible, open development platform that allows developers to build custom applications and integrations to meet the specific needs of their contact center. One of the key features of Cisco Finesse is the ability to trigger actions based on events within the contact center network, such as an incoming call or a change in the status of a customer's account. This allows developers to build applications that can react to real-time events and provide relevant information or services to agents as they handle customer interactions.

#### NEW QUESTION 277

- (Exam Topic 3)

When a Cisco IOS XE networking device is configured by using RESTCONF, what is the default data encoding method?

- A. application/yaml-data+json
- B. application/yang-data+json
- C. application/xml-data+json
- D. application/json-data+xml

**Answer:** D

#### NEW QUESTION 282

- (Exam Topic 3)

Which HTTP method is used by webhooks and notifies a listener about an event change?

- A. PUT
- B. POST
- C. PATCH
- D. GET

**Answer:** B



NEW QUESTION 284

- (Exam Topic 3)

A developer must test the performance and reliability of an application. After functional and load tests are run, the application crashes due to traffic spikes from users. Which type of API constraint must be implemented to maintain reliability?

- A. rate limiting
- B. pagination
- C. payload limits
- D. filtering

Answer: A

NEW QUESTION 289

- (Exam Topic 3)

What is a capability of Ansible playbooks?

- A. They execute scheduled tasks regularly.
- B. They define the state for a device configuration.
- C. They collect SNMP logs from networking devices.
- D. They utilize the target device agent to execute.

Answer: A

NEW QUESTION 290

- (Exam Topic 3)

An engineer must make changes on a network device through the management platform API. The engineer prepares a script to send the request and analyze the response, check headers, and read the body according to information inside response headers. Drag and drop the HTTP header values from the left onto the elements of an HTTP response on the right.

16974	cache-control
no-store, must-revalidate	content-length
timeout=5, max=100	keep-alive
application/json; charset=UTF-8	content-type

- A. Mastered
- B. Not Mastered

Answer: A

Explanation:

16974	no-store, must-revalidate
no-store, must-revalidate	16974
timeout=5, max=100	timeout=5, max=100
application/json; charset=UTF-8	application/json; charset=UTF-8

NEW QUESTION 291

- (Exam Topic 3)

What is a characteristic of Waterfall compared to Agile software development method?

- A. Waterfall focuses on continuous improvement, and Agile focuses on the design phase.
- B. Waterfall separates the project development lifecycle into sprints, and Agile does not use cycles.
- C. Waterfall specifies requirements before development begins, and Agile responds flexibly to changes in requirements.
- D. Waterfall uses reviews with step by step approach, and Agile uses a serially phased approach.

**Answer: C**

**NEW QUESTION 295**

- (Exam Topic 3)

What is the meaning of the HTTP status code 204?

- A. request completed; new resource created
- B. server successfully processed request; no content returned
- C. standard response for successful requests
- D. invalid query parameters

**Answer: B**

**NEW QUESTION 299**

- (Exam Topic 3)

What is a capability of the AXL API?

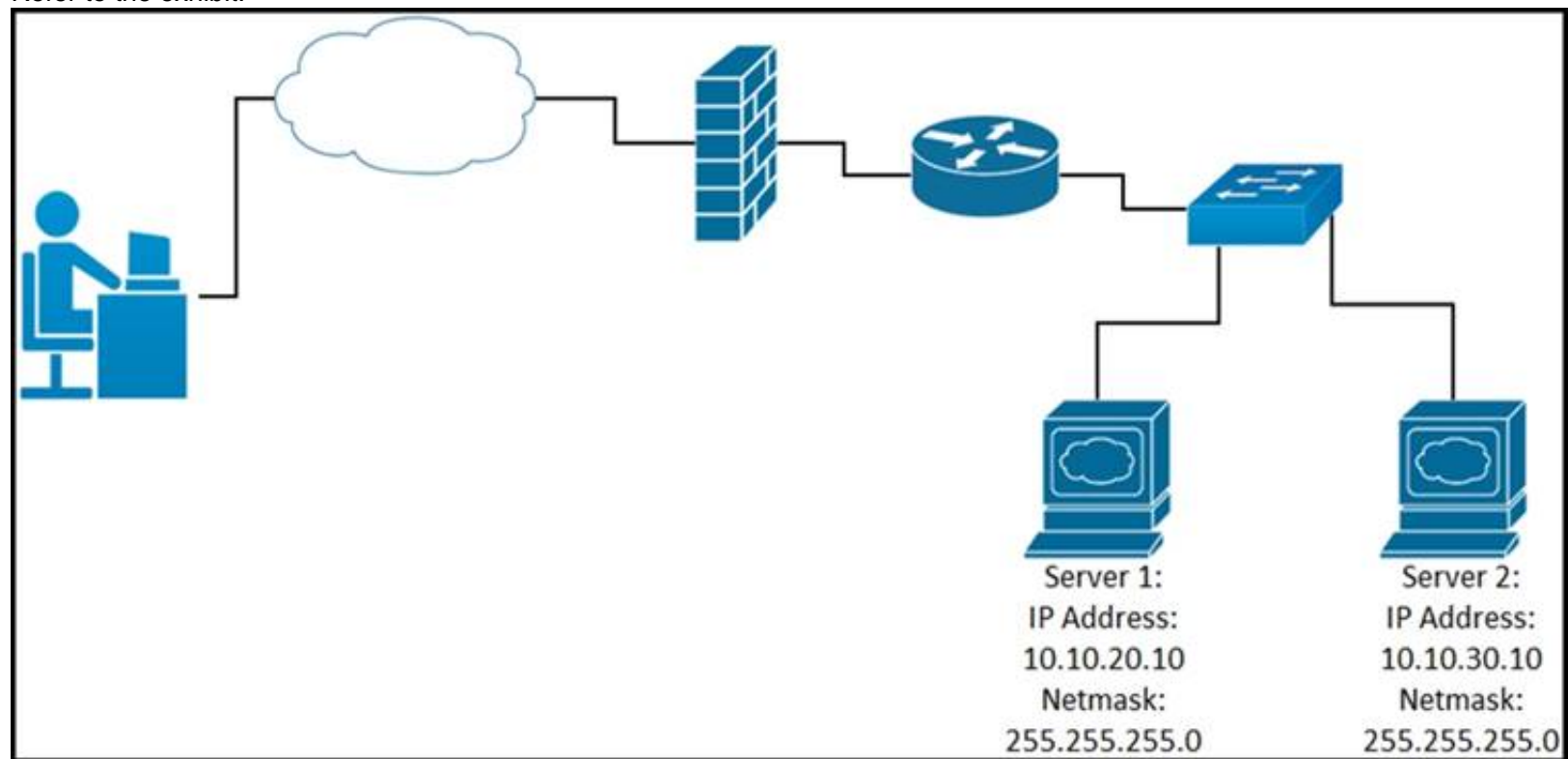
- A. It signs a user in to a phone that is configured for extension mobility.
- B. It pulls logs for the Cisco Tomcat service.
- C. It authenticates users who exist in Cisco Unified Communications Manager.
- D. It provides support for HTTP and HTTPS communications.

**Answer: C**

**NEW QUESTION 302**

- (Exam Topic 3)

Refer to the exhibit.



While developing a Cisco Webex bot, an application reaches the public IP address of the firewall, but traffic is forwarded to the IP address of server 1 instead of the IP address of server 2. What causes this issue?

- A. The proxy server that rewrites traffic is misconfigured.
- B. The router is sending the traffic to server 1 instead of server 2.
- C. The switch is forwarding IP traffic to the wrong VLAN.
- D. NAT is misconfigured on the firewall.

**Answer: D**

**NEW QUESTION 305**

- (Exam Topic 3)

A developer is running an application that connects to the Cisco website and collects data. The application will be hosted in a local data center and the data will need to be collected on a frequent basis. The application client requires certain environmental variables to be set before the run. Which Bash command sets the environmental variables for a Linux system?

- A. `"cisco.com"=WEBSITE`
- B. `export lvar=23`
- C. `WEBSITE="cisco.com"`
- D. `export website="cisco.com"`

**Answer: D**

NEW QUESTION 306

- (Exam Topic 3)

Drag and drop the capabilities from the left onto the Cisco Network Management Platforms that support the capabilities on the right.

receives AI/ML network performance insights, and uses guided issue remediation	Meraki
achieves automation through common policy for data center operations	Cisco DNA Center
establishes an overlay fabric to connect data centers, branches, and campuses through vManage	ACI
provisions and manages networks, networking devices, and clients through a fully managed cloud service	Cisco SD-WAN
supports multivendor networks through Network Element Drivers	NSO

- A. Mastered
- B. Not Mastered

Answer: A

Explanation:

receives AI/ML network performance insights, and uses guided issue remediation	provisions and manages networks, networking devices, and clients through a fully managed cloud service
achieves automation through common policy for data center operations	receives AI/ML network performance insights, and uses guided issue remediation
establishes an overlay fabric to connect data centers, branches, and campuses through vManage	achieves automation through common policy for data center operations
provisions and manages networks, networking devices, and clients through a fully managed cloud service	establishes an overlay fabric to connect data centers, branches, and campuses through vManage
supports multivendor networks through Network Element Drivers	supports multivendor networks through Network Element Drivers

NEW QUESTION 308

- (Exam Topic 3)

A team of developers is responsible for a network orchestration application in the company. The responsibilities also include: developing and improving the application in a continuous manner deployment of the application and management of CI/CD frameworks monitoring the usage and problems and managing the performance improvements Which principle best describes this DevOps practice?

- A. responsible for IT operations
- B. automation of processes
- C. end-to-end responsibility
- D. quality assurance checks

Answer: C

NEW QUESTION 311

- (Exam Topic 3)

Drag and drop the code from the bottom onto the box where the code is missing to enable ports on a switch by using RESTCONF. Not all options are used.



```
def enable_function(if_name, if_status, if_type):
    headers = {'Accept': 'application/yang-data+json',
               'Content-Type': 'application/ ' }
    payload = {
        " ": {
            "name": if_name,
            "enabled": if_status,
            "type": if_type,
        }
    }
    = 'https://192.168.1.1:8443'
    restconf_url = '/restconf/data/ietf-interfaces:interfaces/interface'
    res = requests.put(f'{base_url}{restconf}={if_name}',
                       headers=headers, json=payload,
                       auth=('cisco', 'secret'), verify=False)

enable_function('Loopback1', true, ' ')
```

yang-data+json

application/xml

ietf-interfaces:interface

iana-if-type:softwareLoopback

base\_url

run\_function

iana-if-type:ethernetCsmacd

- A. Mastered  
 B. Not Mastered

Answer: A

Explanation:

```
def enable_function(if_name, if_status, if_type):
    headers = {'Accept': 'application/yang-data+json',
               'Content-Type': 'application/ yang-data+json ' }
    payload = {
        " ietf-interfaces:interface ": {
            "name": if_name,
            "enabled": if_status,
            "type": if_type,
        }
    }
    base_url = 'https://192.168.1.1:8443'
    restconf_url = '/restconf/data/ietf-interfaces:interfaces/interface'
    res = requests.put(f'{base_url}{restconf}={if_name}',
                       headers=headers, json=payload,
                       auth=('cisco', 'secret'), verify=False)

enable_function('Loopback1', true, ' iana-if-type:ethernetCsmacd ')
```

yang-data+json

application/xml

ietf-interfaces:interface

iana-if-type:softwareLoopback

base\_url

run\_function

iana-if-type:ethernetCsmacd

#### NEW QUESTION 312

- (Exam Topic 3)

Drag and drop the API characteristics from the left onto the categories on the right.

The API is seen as a function call.	REST
There is communication between server and client.	
It follows a resource-oriented model.	RPC
The API can be stateless.	

- A. Mastered
- B. Not Mastered

**Answer:** A

**Explanation:**

Graphical user interface, application Description automatically generated

**NEW QUESTION 317**

- (Exam Topic 3)

A business needs to create a simulated environment that mimics a production infrastructure to make changes to the OSPF process and analyze the impact. What should be used?

- A. Cisco VIRL / Cisco CML
- B. Cisco DevNet Sandbox labs
- C. pyATS
- D. Puppet

**Answer:** A

**Explanation:**

<https://www.cisco.com/c/en/us/products/cloud-systems-management/modeling-labs/index.html>

**NEW QUESTION 321**

- (Exam Topic 3)

What is a procedural component of CI/CD pipelines?

- A. Bundled artifacts must be generated.
- B. Every test must pass for the pipeline to continue its execution.
- C. Some tests fail without stopping the pipeline execution.
- D. The release label that identifies the build is optional.

**Answer:** B

**Explanation:**

In a CI/CD (Continuous Integration/Continuous Deployment) pipeline, a procedural component is a specific step or action that is carried out in a specific order as part of the pipeline process. One of the procedural components of a CI/CD pipeline is that every test must pass in order for the pipeline to continue its execution. If any test fails, the pipeline will stop and the issue must be addressed before the pipeline can continue. This is an important procedural component of a CI/CD pipeline because it ensures that the code being deployed is of high quality and meets the necessary standards before it is released.

**NEW QUESTION 323**

- (Exam Topic 3)

Drag and drop the code from the bottom onto the box where the code is missing to complete the error path scenario. Not all options are used.

```
import pytest
class Player:
    def __init__(self, name):
        self.name = name
        [redacted]
    def set_rating(self, rating):
        if rating or rating is int(0):
            [redacted]:
                raise ValueError('rating is invalid', rating)
            else:
                [redacted]
                return True
        else:
            return False
@pytest.fixture
def player():
    player = Player('User One')
    yield player
    del player
@pytest.mark.usefixtures('player')
class TestErrorPathSetRating:
    def test_add_higher_rating(self, player):
        with pytest.raises(ValueError):
            player.set_rating(101)
    def test_add_invalid_rating(self, player):
        with pytest.raises(ValueError):
            [redacted]
    def test_add_lower_rating(self, player):
        with pytest.raises(ValueError):
            player.set_rating(-1)
```

player.set_rating(0)	if rating != 0:
player.set_rating(85)	if rating or rating is int(0):
if rating < 1 or rating > 100:	self.rating = rating
self.rating = None	

- A. Mastered
- B. Not Mastered

Answer: A

Explanation:

```
import pytest
class Player:
    def __init__(self, name):
        self.name = name
        self.rating = None
    def set_rating(self, rating):
        if rating or rating is int(0):
            if rating < 1 or rating > 100:
                raise ValueError('rating is invalid', rating)
            else:
                if rating != 0:
                    return True
        else:
            return False
@pytest.fixture
def player():
    player = Player('User One')
    yield player
    del player
@pytest.mark.usefixtures('player')
class TestErrorPathSetRating:
    def test_add_higher_rating(self, player):
        with pytest.raises(ValueError):
            player.set_rating(101)
    def test_add_invalid_rating(self, player):
        with pytest.raises(ValueError):
            player.set_rating(0)
    def test_add_lower_rating(self, player):
        with pytest.raises(ValueError):
            player.set_rating(-1)
```

player.set_rating(0)	if rating != 0:
player.set_rating(85)	if rating or rating is int(0):
if rating < 1 or rating > 100:	self.rating = rating
self.rating = None	

### NEW QUESTION 325

- (Exam Topic 3)

Which network constraint causes the performance of the application to decrease as the number of users accessing the application increases?

- A. latency



- B. loss
- C. bandwidth
- D. jitter

Answer: C

#### NEW QUESTION 328

- (Exam Topic 3)

```
---
param0: Workflow1
param1:
  list:
    - name: VLAN_ID
      value: '198'
param2: 0
```

Refer to the exhibit. The YAML shown contains an object "param0" that is equal to "Workflow1", a second object "param1" that contains an object called "list" which contains an array of two objects, "name" (equal to "VLAN\_ID") and "value" (equal to a text value "198"), and finally a third object "param2" that is equal to "0". What is the equivalent message in JSON data format?

A. [

```
  "param0"="Workflow1";
  "param1"=
    "list"=
      [ "name"="VLAN_ID";
        "value"="198" ]
  "param2"=0
]
```

B. {

```
  "param0": "Workflow1";
  "param1": {
    "list":
      [
        { "name": "VLAN_ID";
          "value": "198" }
      ]
  },
  "param2": 0
}
```

C. [

```
  "param0": "Workflow1",
  "param1": {
    "list":
      {
        [ "name": "VLAN_ID",
          "value": "198" ]
      }
  },
  "param2": 0
]
```

D. {

```
  "param0": "Workflow1",
  "param1": {
    "list":
      [
        { "name": "VLAN_ID",
          "value": "198" }
      ]
  },
  "param2": 0
}
```

Answer: D

**NEW QUESTION 332**

- (Exam Topic 3)

```
HTTPS/1.1 201 Created
Date: Tue, 08 Nov 2020 09:37:27 GMT
Server: example-server
Location: https://example.com/restconf/data\
        example-jukebox/library/dogbreed=Australian%20Cattle%20Dog
Last Modified: Tue 08 Nov 2020 09:37:27 GMT
ETag: "s1878124t4c"
```

Refer to the exhibit. Which RESTCONF request results in this response?

A.

```
GET /restconf/data/example-jukebox:jukebox/library HTTP/1.1
Host: example.com
Content-Type: application/yang-data-json

{
  "Example-jukebox:dogbreed" : [
    {
      "name" : "Australian Cattle Dog"
    }
  ]
}
```

B.

```
CONFIG /restconf/data/example-jukebox:jukebox/library HTTP/1.1
Host: example.com
Content-Type: application/yang-data-json

{
  "Example-jukebox:dogbreed" : [
    {
      "name" : "Australian Cattle Dog"
    }
  ]
}
```

C.

```
PUT /restconf/data/example-jukebox:jukebox/library HTTP/1.1
Host: example.com
Content-Type: application/yang-data-json

{
  "Example-jukebox:dogbreed" : [
    {
      "name" : "Australian Cattle Dog"
    }
  ]
}
```

D.

```
POST /restconf/data/example-jukebox:jukebox/library HTTP/1.1
Host: example.com
Content-Type: application/yang-data+json

{
  "Example:dogbreed" : [
    {
      "name" : "Australian Cattle Dog"
    }
  ]
}
```

Answer: D

### NEW QUESTION 336

- (Exam Topic 3)

A developer creates a program in which an object maintains a list of classes based on the observer pattern. The classes are dependent on the object. Whenever the state of the object changes, it notifies the dependent classes directly through callbacks. Which advantage of the observer pattern offers minimum dependencies and maximum flexibility between dependent objects or classes?

- A. tight coupling
- B. cohesion
- C. mediation
- D. loose coupling

**Answer: D**

### NEW QUESTION 341

- (Exam Topic 3)

**CISCO SECURITY APIS**

Introduction

- API Workflow
  - 1.) Find all events where Malware...
  - 2.) Find Endpoint Details for Rem...
  - 3.) Nuke the Endpoint to Prevent...
  - 4.) Find samples in Threat Grid
  - 5.) Get all sample domains to an...
  - 6.) Check all domains against Inv...
  - 7.) For suspect domains get mor...
  - 8.) Enforce on bad Domains in U...
  - 9.) Research other Ransomware ...
  - Generate Authentication Token ...
  - 10.) Add custom intelligence Fee...
- NGFW
  - Generate Authentication Token
  - Access Policies
  - Access Rules
  - Access Rule Details
  - New Access Rule in Policy
  - New Bulk Access Rule in Policy

## Cisco Security APIs

The main goal of this collection to help the developer understand the various API capabilities of Cisco NGFW, Malware Protection, Threat Grid, ISE and Umbrella. It will cover useful API features for each of the products and how to properly use them. Simple workflow is also included in the collection to *Collect* all the characteristics/signatures of the possible attack using AMP. *Validate* the collected intelligence with Threat Grid and Umbrella. *Deploy* the intelligence to the NGFW, Umbrella and ISE to protect and contain the threat.

## API Workflow

**GET 1.) Find all events where Malware Executed**

`https://amp.dcloud.cisco.com/v1/events?connector_guid[]=&event_type[]=1107296272`

Get a listing of all the events for a specific computer when the quarantine failed

PARAMS

Refer to the exhibit. Drag and drop the code from the bottom onto the box where the code is missing to construct a Python script that calls a REST API request. Not all options are used.

```
import requests

[ ] = "https://fmc-hostname/api/fmc_tid/v1/domain//tid/source"

payload = {
    "name": "Threat Grid Ransomware DNS",
    "delivery": "url",
    "uri": "https://panacea.threatgrid.com/api/v3/feeds"+
    "/ransomware-dns 2017-12-08.stix?api_key=",
    "refresh": 1440,
    "version": "1.0.0",
    "params": {
        "selfSignedServerCertificate": "true",
        "hostnameVerifier": "allow_all"
    },
    "property": {
        "ttl": 90,
        "publish": true,
        "action": "monitor"
    }
}

headers = {
    'X-auth-access-token': 'access_token', ' [ ] ': 'application/json'
}

response = requests. [ ] ("POST", url,
    headers=headers, data = [ ] )
print(response.text.encode('utf8'))
```

- |         |          |          |              |      |
|---------|----------|----------|--------------|------|
| url     | Encoding | base_url | Content-Type | post |
| request | payload  |          |              |      |

- A. Mastered
- B. Not Mastered



Answer: A

Explanation:

```
import requests

url = "https://fmc-hostname/api/fmc_tid/v1/domain//tid/source"
payload = {
    "name": "Threat Grid Ransomware DNS",
    "delivery": "url",
    "uri": "https://panacea.threatgrid.com/api/v3/feeds"+
    "/ransomware-dns 2017-12-08.stix?api_key=",
    "refresh": 1440,
    "version": "1.0.0",
    "params": {
        "selfSignedServerCertificate": "true",
        "hostnameVerifier": "allow_all"
    },
    "property": {
        "ttl": 90,
        "publish": true,
        "action": "monitor"
    }
}
headers = {
    'X-auth-access-token': 'access_token', 'Content-Type': 'application/json'
}

response = requests.request("POST", url,
    headers=headers, data = base_url )
print(response.text.encode('utf8'))
```

url

Encoding

base\_url

Content-Type

post

request

payload

NEW QUESTION 344

- (Exam Topic 3)  
Which solution reduces costs from MPLS, improves application performance, and simplifies operations?

- A. Cisco NSO
- B. Cisco SD-WAN
- C. Cisco ACI
- D. Cisco DNA Center

Answer: B

NEW QUESTION 348

- (Exam Topic 3)  
Drag and drop the characteristics from the left onto the corresponding categories on the right to compare RESTful and RPC APIs.

Answer Area

stateless

session-based

must use HTTP

sometimes uses HTTP

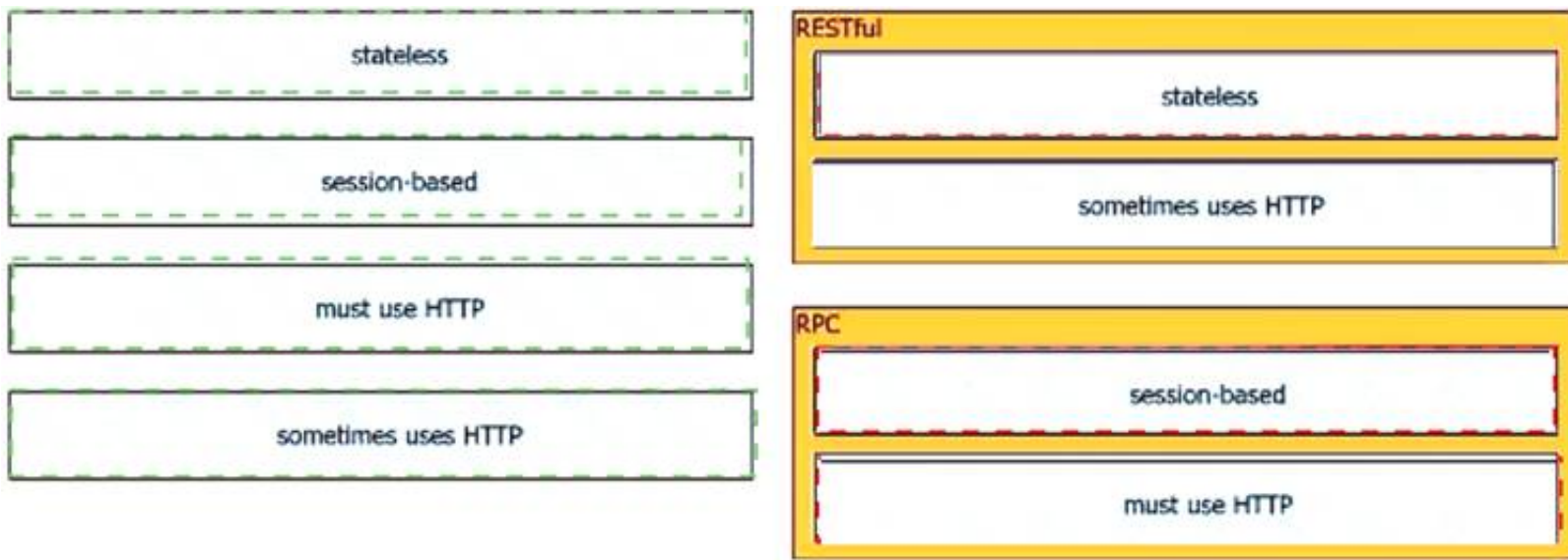
RESTful

RPC

- A. Mastered
- B. Not Mastered

Answer: A

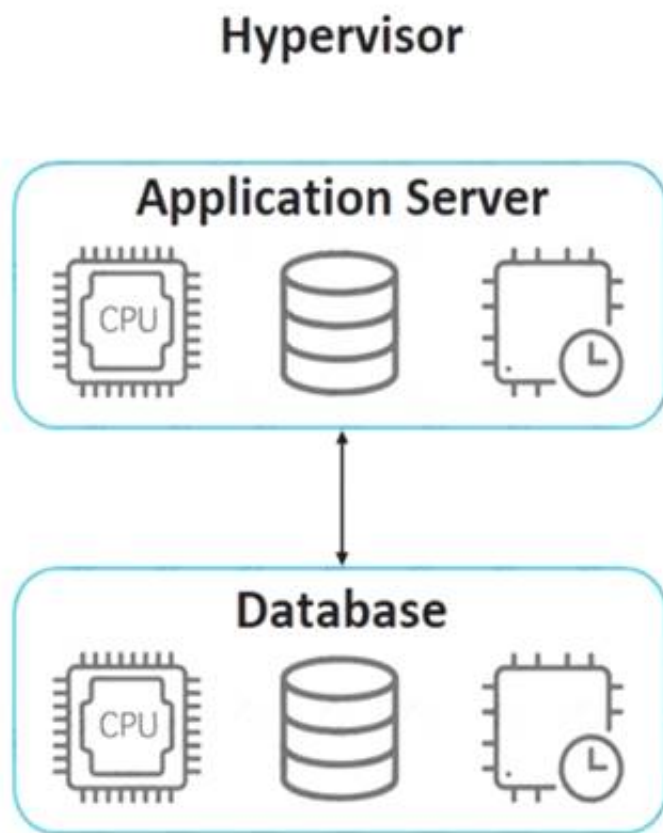
Explanation:



**NEW QUESTION 349**

- (Exam Topic 3)

Refer to the exhibit.



An application must be deployed on a server that has other applications installed. The server resources are to be allocated based on the deployment requirements. The OS for each application must be independent. Which type of deployment is used?

- A. hybrid
- B. virtual machines
- C. containers
- D. bare metal

**Answer: B**

**NEW QUESTION 352**

- (Exam Topic 3)

A developer attempts to refactor and improve the application code. It is noticed that the code contains several pieces of key information that could be a security threat if this code is accessible by those who are not authorized to this data. Which approach addresses the security concerns noticed by the developer?

- A. Host the application code on a machine located in a secure data center.
- B. Utilize environment variables for username and password details.
- C. Rely on the security teams' goodwill to not give access to those who do not need it.
- D. Move the hardware that the application is deployed on to a secure location.

**Answer: B**

**NEW QUESTION 356**

- (Exam Topic 3)

A development team is creating an application used for contactless payments. The application must: Be web-based Capture and process the credit card information for a purchase.

Which security action must the web application use to gather and process the private customer data?

- A. Enable RATs to monitor the web application remotely.
- B. Disable botnets to eliminate risks.
- C. Disable TLS to increase the connection speed.
- D. Enable the encryption of network traffic.

Answer: D

### NEW QUESTION 361

- (Exam Topic 3)

Refer to the exhibit.

```
module ietf-interface {
  namespace "urn:ietf:params:xml:ns:yang:ietf-interfaces";
  prefix if;
  import ietf-yang-types {
    prefix yang;
  }
  container interfaces-state {
    list interface {
      key "name";
      leaf name {
        type string;
      }
      leaf admin-status {
        type enumeration {
          enum up {
            value 1;
          }
          enum down {
            value 2;
          }
          enum testing {
            value 3;
          }
        }
      }
      leaf if-index {
        type int32 {
          range "1..2147483647"
        }
      }
      container statistics {
        leaf in-octets {
          type yang:counter64;
        }
        leaf in-unicast-pkts {
          type yang:counter64;
        }
      }
    }
  }
}
```

Which XML snippet has interface information that conforms to the YANG model?

A. Text Description automatically generatedB.

```
<interfaces-state
xmlns="urn:ietf:params:xml:ns:yang:ietf-interfaces"
xmlns:if="urn:ietf:params:xml:ns:yang:ietf-interfaces">
  <interface name="GigabitEthernet1">
    <admin-status>1</admin-status>
    <if-index>1</if-index>
    <statistics>
      <in-octets>408164820</in-octets>
      <in-unicast-pkts>728061</in-unicast-pkts>
    </statistics>
  </interface>
</interfaces-state>
```

Text

Description automatically generated



```
<interfaces-state
xmlns="urn:ietf:params:xml:ns:yang:ietf-interfaces"
xmlns:if="urn:ietf:params:xml:ns:yang:ietf-interfaces">
  <interface>
    <name>GigabitEthernet1</name>
    <admin-status>up</admin-status>
    <if-index>1</if-index>
    <in-octets>408164820</in-octets>
    <in-unicast-pkts>728061</in-unicast-pkts>
  </interface>
</interfaces-state>
```

B. Text Description automatically generated

```
<interfaces-state
xmlns="urn:ietf:params:xml:ns:yang:ietf-interfaces"
xmlns:if="urn:ietf:params:xml:ns:yang:ietf-interfaces">
  <interface>
    <name>GigabitEthernet1</name>
    <admin-status>up</admin-status>
    <if-index>1</if-index>
    <statistics>
      <in-octets>408164820</in-octets>
      <in-unicast-pkts>728061</in-unicast-pkts>
    </statistics>
  </interface>
</interfaces-state>
```

C. Text Description automatically generated

```
<interfaces-state
xmlns="urn:ietf:params:xml:ns:yang:ietf-interfaces"
xmlns:if="urn:ietf:params:xml:ns:yang:ietf-interfaces">
  <interface>
    <name>GigabitEthernet1</name>
    <admin-status>1</admin-status>>
    <if-index>1</if-index>
    <statistics>
      <in-octets>408164820</in-octets>
      <in-unicast-pkts>728061</in-unicast-pkts>
    </statistics>
  </interface>
</interfaces-state>
```

**Answer: C**

**Explanation:**

<https://datatracker.ietf.org/doc/id/draft-ietf-netmod-interfaces-cfg-01.txt> <admin-status>up</admin-status>

#### NEW QUESTION 366

- (Exam Topic 3)

```
import requests
from requests.auth import HTTPBasicAuth

user= "user"
password= "PASSWORD"

token=requests.post('https://<DNAC ADRESS>/dna/system/api/v1/auth/token',

```

Refer to the exhibit. A developer must use a token to collect data from Cisco DNA Center API and prepares a Python script to send requests. Which line of code needs to be placed on the snippet where the code is missing to obtain a token from the Cisco DNA Center API?

- A. token=BasicAuth('user','password'))
- B. auth=BasicAuth('user','password'))
- C. auth=HTTPBasicAuth(user,password))
- D. token=HTTPBasicAuth(user,password))

Answer: C

### NEW QUESTION 371

- (Exam Topic 2)

Refer to the exhibit.

```
import requests, sys
from config import user, password

url = "http://restconf.devnet.com:9443/api/running/interfaces"
headers = 
response = requests.put(url, auth=(user, password), headers=headers,
verify=False)
print(response.text)
```

A network engineer wants to use an API to update information about device interfaces. The network devices are deployed in a Cisco DevNet Sandbox and have running interfaces. Which line of code needs to be placed in the snippet where the code is missing?

- A. {'Content-Type': 'application/yang.data+xml', 'Accept': 'application/yang.data+xml'}
- B. {'Content-Type': 'application/yang.data+yaml', 'Accept': 'application/yang.data+yaml'}
- C. {'Content-Type': 'application/restconf.data+json', 'Accept': 'application/ restconf.data+json'}
- D. {'Content-Type': 'application/yang.data+utf8', 'Accept': 'application/ restconf.data+utf8'}

Answer: C

### NEW QUESTION 373

- (Exam Topic 2)

In test-driven development, what are two of the green bar patterns? (Choose two.)

- A. another test
- B. break
- C. triangulate
- D. starter test
- E. fake it

Answer: CE

#### Explanation:

<https://blog.baudson.de/blog/test-driven-development-green-bar-patterns>

### NEW QUESTION 375

- (Exam Topic 3)

Drag and drop the code from the bottom onto the box where the code is missing to construct a Python script that calls a REST API request. The Python script retrieves a list of tasks from a to-do list for effective project management purposes. Not all options are used.

```
import requests

response = .get('https://todolist.example.com/tasks/')

if .status_code != 200:
    raise ApiError('GET /tasks/ {}'.format(response. ))

for item in response.json():
    print('{} {}'.format(item['id'], ['summary']))
```

item

response

requests

get()

status\_code

status

- A. Mastered
- B. Not Mastered

Answer: A

#### Explanation:

```
import requests

response = .get('https://todolist.example.com/tasks/')

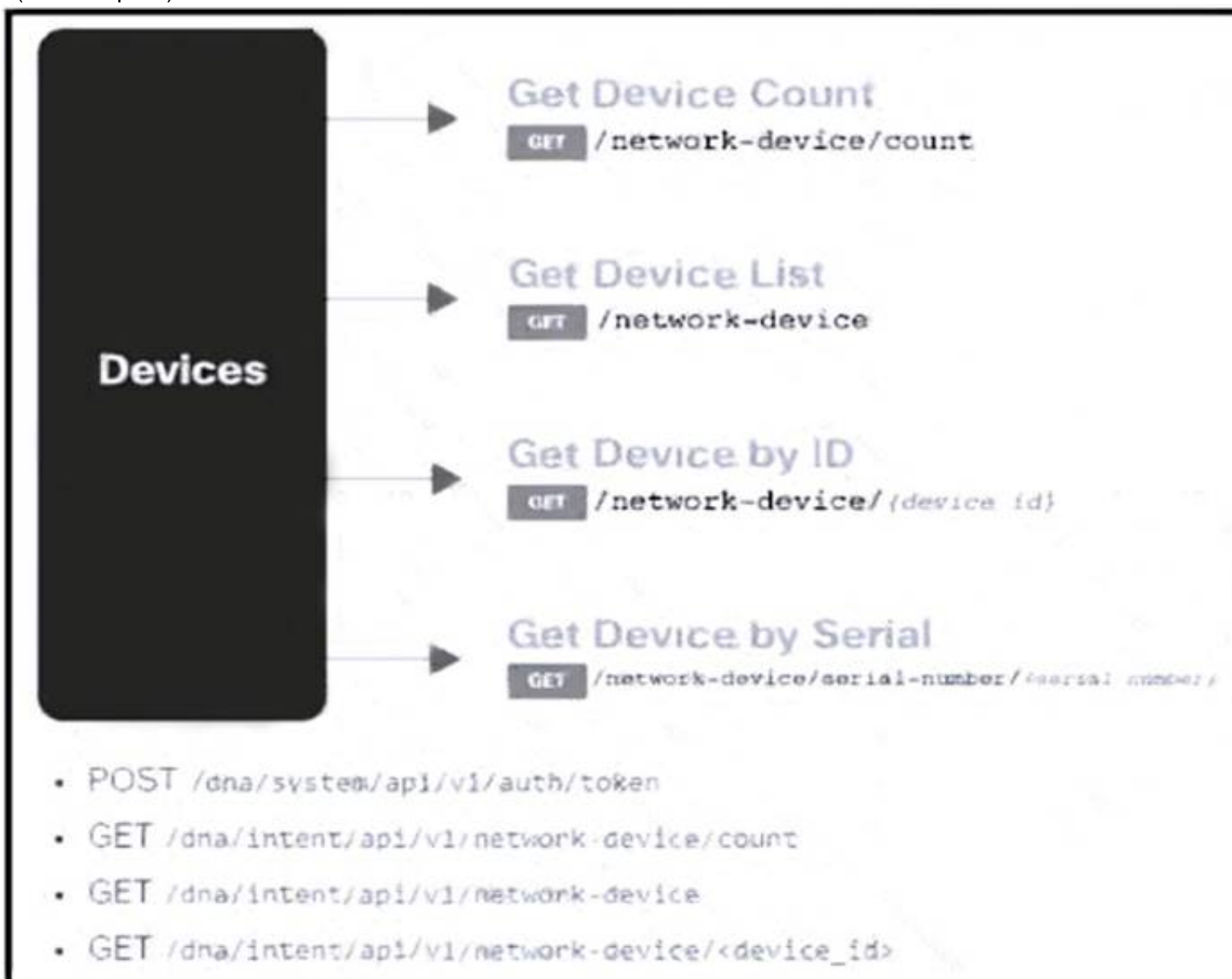
if .status_code != 200:
    raise ApiError('GET /tasks/ {}'.format(response.))

for item in response.json():
    print('{} {}'.format(item['id'], ['summary']))
```

<input type="text" value="item"/>	<input type="text" value="response"/>
<input type="text" value="requests"/>	<input type="text" value="get()"/>
<input type="text" value="status_code"/>	<input type="text" value="status"/>

#### NEW QUESTION 379

- (Exam Topic 3)



Refer to the exhibit. Drag and drop the code from the bottom onto the box where the code is missing to construct a request that generates a security token and gets a list of network devices. Not all options are used.



```
import json, requests, urllib3
from requests.auth import HTTPBasicAuth
from config import host, username, password

headers = { 'content-type': "application/json", 'x-auth-token': "" }
def dna_api_auth(host, username, password):
    url = "https://{}/api/system/v1/auth/token".format(host)
    response = [ ] .post(url, auth=HTTPBasicAuth(username, password),
        headers=headers, verify=False)
    return response.json()["Token"]

def list_dna_devices(token):
    url = "https://{}/api/v1/network-device".format(host)
    headers["x-auth-token"] = token
    response = requests.get(url, headers=headers, verify=False)
    data = [ ] .json()
    for item in data['response']:
        print(item["hostname"])

token = [ ] (host, username, password)
[ ] (token)
```

response	reply	dna_api_auth	requests
json	list_dna_devices	list devices	

- A. Mastered  
 B. Not Mastered

Answer: A

Explanation:

```
import json, requests, urllib3
from requests.auth import HTTPBasicAuth
from config import host, username, password

headers = { 'content-type': "application/json", 'x-auth-token': "" }
def dna_api_auth(host, username, password):
    url = "https://{}/api/system/v1/auth/token".format(host)
    response = requests .post(url, auth=HTTPBasicAuth(username, password),
        headers=headers, verify=False)
    return response.json()["Token"]

def list_dna_devices(token):
    url = "https://{}/api/v1/network-device".format(host)
    headers["x-auth-token"] = token
    response = requests.get(url, headers=headers, verify=False)
    data = response .json()
    for item in data['response']:
        print(item["hostname"])

token = dna_api_auth (host, username, password)
list_dna_devices (token)
```

response	reply	dna_api_auth	requests
json	list_dna_devices	list devices	

#### NEW QUESTION 384

- (Exam Topic 3)

Which IP service is used to monitor the performance of network devices?

- A. SNMP  
 B. DHCP  
 C. DNS

D. NTP

**Answer:** A

#### NEW QUESTION 388

- (Exam Topic 3)

```
import os
import requests

# username and password

API_USER_NAME = "devnetuser"
API_PASSWORD = os.environ['API_PASSWORD']

requests.get('https://api.cisco.com/end-service', auth=(API_USER_NAME, API_PASSWORD))
```

Refer to the exhibit. An engineer must authorize a REST API call. The API password is "Cisco123!". Which Bash command must be placed in the code to authorize the call?

- A. mkdir API\_PASSWORD=Cisco123!
- B. set API\_PASSWORD=Cisco123!
- C. cp API\_PASSWORD=Cisco123!
- D. export API\_PASSWORD=Cisco123!

**Answer:** D

#### NEW QUESTION 389

- (Exam Topic 3)

Which Cisco platform is used to manage data center infrastructure through third-party tools and system integrations?

- A. Cisco DNA Center
- B. Cisco UCS Manager
- C. Cisco Intersight
- D. Cisco UCS Director

**Answer:** D

#### NEW QUESTION 392

- (Exam Topic 3)

Which two commands download and execute an Apache web server container in Docker with a port binding 8080 in the container to 80 on the host? (Choose two.)

- A. docker pull apache
- B. docker run -p 8080:80 httpd
- C. docker run -p 80:8080 httpd
- D. docker pull httpd
- E. docker pull https

**Answer:** CD

#### NEW QUESTION 394

- (Exam Topic 3)

Which function does a router provide to a network?

- A. broadcast domain segmentation
- B. unique host on a Layer 3 network
- C. unique hardware address for every node on a LAN
- D. broadcast domain extension

**Answer:** B

#### NEW QUESTION 395

- (Exam Topic 3)

A developer completed the creation of a script using Git. Before delivering it to the customer, the developer wants to be sure about all untracked files, without losing any information. Which command gathers this information?

- A. git clean -n
- B. git rm -f
- C. git clean -r
- D. git rm \*

**Answer:** A

#### NEW QUESTION 397

- (Exam Topic 3)

What is a benefit of version control?

- A. prevents two users from working on the same file
- B. keeps track of all changes to the files
- C. prevents the sharing of files
- D. keeps the list of data types used in the files

**Answer:** B

#### NEW QUESTION 399

- (Exam Topic 3)

Which Python function is used to parse a string that contains JSON data into a Python dictionary?

- A. json.dumps()
- B. json.to\_json()
- C. json.parse()
- D. json.loads()

**Answer:** D

#### Explanation:

loads() function is present in python built-in 'json' module. This function is used to parse the JSON string.

#### NEW QUESTION 403

- (Exam Topic 3)

```
1 import requests
2 from requests.auth import HTTPBasicAuth
3 BASE_URL = 'https://<IP ADDRESS or FQDN>'
4 AUTH_URL = '/dna/system/api/v1/auth/token'
5 TOKEN = '<TOKEN>'
6
7 headers = {'X-Auth-Token': TOKEN, 'Content-Type': 'application/json'}
8
9 DEVICES_COUNT_URL = '/dna/intent/api/v1/network-device/count'
10 DEVICES_URL = '/dna/intent/api/v1/network-device'
11 DEVICES_BY_ID_URL = '/dna/intent/api/v1/network-device/'
12
13 def devices_func(headers):
14     response = requests.get(BASE_URL + DEVICES_COUNT_URL,
15                             headers = headers, verify=False)
16     return response.json()['response']
17
18 def devices_test(headers, query_string_params):
19     response = requests.get(BASE_URL + DEVICES_URL, headers = headers,
20                             params = query_string_params, verify=False)
21     return response.json()['response']
22
23 def devices_info(headers, device_id):
24     response = requests.get(BASE_URL + DEVICES_BY_ID_URL + device_id,
25                             headers = headers, verify=False)
26     return response.json()['response']
27
28 print(devices_func(headers))
29 print(devices_test(headers, {}))
30 print(devices_test(headers, {'hostname': 'CSR1Kv-01.devnet.local'}))
31 response = devices_test(headers, {'platformId': 'C9500-40X'})
32 print(devices_info(headers, response[0]['id']))
```

Refer to the exhibit. An engineer prepares a script to automate workflow by using Cisco DNA Center APIs to display:  
total count of devices

list of the network devices

information of one device with a hostname filter

What is displayed in the final step after the Python script is executed?

- A. information about a device of type C9500-40x.
- B. filtered results by the hostname and the platformId C9500-40X
- C. information about the test devices
- D. list of devices with platformId C9500-40x

**Answer:** B

#### NEW QUESTION 404

- (Exam Topic 3)

Which two situations align with infrastructure as code principles? (Choose two.)

- A. nonreplicable snowflake servers
- B. release versions to specific hardware
- C. maximized configuration drift
- D. easily reproducible systems
- E. repeatable processes



**Answer:** BD

**NEW QUESTION 406**

- (Exam Topic 3)

A company wants to automate the orders processed on its website using API. The network device that supports the solution must:

- support XML encoding
- support distributed transactions
- support YANG data models
- be support software redundancy

Which requirement prevents the use of RESTCONF for the solution?

- A. software redundancy
- B. YANG data models
- C. distributed transactions
- D. XML encoding

**Answer:** C

**NEW QUESTION 409**

- (Exam Topic 3)

What is a feature of XML compared to other data formats?

- A. It uses tags to define the structure.
- B. It uses parenthesis for key-value pairs.
- C. It uses indentation to define the structure.
- D. It uses namespaces for list representation.

**Answer:** A

**NEW QUESTION 412**

- (Exam Topic 3)

An engineer must configure Cisco Nexus devices and wants to automate this workflow. The engineer will use an Ansible playbook to configure devices through Cisco NX REST API. Before the code is run, which resource must be used to verify that the REST API requests work as expected?

- A. Cisco Open NX-OS
- B. Cisco NX-OS SDK
- C. Cisco Learning Labs
- D. Cisco Code Exchange for Nexus

**Answer:** C

**NEW QUESTION 417**

- (Exam Topic 3)

What is a benefit of using model-driven programmability for infrastructure automation?

- A. connected user tracking
- B. infrastructure resource optimization
- C. multiple device control protocols
- D. device performance monitoring

**Answer:** C

**NEW QUESTION 420**

- (Exam Topic 3)

Which two details are captured from the subnet mask? (Choose two.)

- A. portion of an IP address that refers to the subnet
- B. default gateway of the host
- C. unique number ID assigned to the host
- D. part of an IP address that refers to the host
- E. network connection of a host or interface

**Answer:** AD

**NEW QUESTION 424**

- (Exam Topic 3)

A developer creates an application that must provide an encrypted connection or API keys. The keys will be used to communicate with a REST API. Which command must be used for the secure connection?

- A. curl-X PUSH 'http://username.app.com/endpoint/?api\_key=12345abcdef'
- B. curl -v 'ftp://username.app.com/endpoint/?api\_key=12345abcdef'
- C. curl -X GET 'https://username.app.com/endpoint/?api\_key=12345abcdef'
- D. curl-X GET 'http://username.app.com/endpoint/?api\_key=12345abcdef'

**Answer:** C

#### NEW QUESTION 429

- (Exam Topic 3)

An engineer needs to collect information about 20,000 Bluetooth clients using the Cisco Meraki API. The API returns only 1,000 results. One of the HTTP response headers has the data:

Link: [https://api.meraki.com/info/api/v0/networks/ABC/bluetoothClients?perPage=1000&startingAfter=1000>;rel="n](https://api.meraki.com/info/api/v0/networks/ABC/bluetoothClients?perPage=1000&startingAfter=1000>;rel=)

Which RFC is implemented by the API to apply the restriction?

- A. RFC 5988 – Web Linking
- B. RFC 5890 – Response Constraints
- C. RFC 5005 – Feed Paging and Archiving
- D. RFC 5446 – Content Limits

**Answer: C**

#### NEW QUESTION 431

- (Exam Topic 3)

A developer writes an application that refines data in temporary secure file storage hosted on the public cloud. Data will be deleted after processing and does not contain any private information. What is the advantage that a public cloud deployment provides to the developer?

- A. high security with encryption
- B. ease in infrastructure management
- C. flexible development
- D. bespoke services

**Answer: B**

#### NEW QUESTION 436

- (Exam Topic 3)

Why would a developer compare a current version of code to a previous version?

- A. to provide the single source of truth
- B. to troubleshoot code failures
- C. to track who made a change
- D. to aid in collaboration

**Answer: B**

#### NEW QUESTION 440

- (Exam Topic 3)

An engineer prepares a set of Python scripts to interact with network devices. To avoid network performance issues, the engineer wants to run them in a test environment. Which resource must be used to monitor the live execution of code in an always-available environment?

- A. packet tracer
- B. learning labs
- C. sandbox
- D. code exchange

**Answer: C**

#### NEW QUESTION 442

- (Exam Topic 3)

What is a principle of a code review process?

- A. Changes are made after the code is submitted to source control.
- B. It must not prevent code from getting into production as quickly as possible.
- C. Naming standards must be consistent.
- D. A technical lead must sign off on the review.

**Answer: D**

#### NEW QUESTION 445

- (Exam Topic 3)

Refer to the exhibit. Drag and drop the code snippets from the bottom onto the blanks in the Python script to retrieve a list of network devices from Cisco DNA Center. Not all options are used.

```
import requests
import json
from urllib3.exceptions import InsecureRequestWarning

requests.packages.urllib3.disable_warnings()

dna_center_url = "My_DNA_Center_URL"
authentication = ("dnacenteruser", "dnacenter_password")

def get_token():
    url = "https:// " + dna_center_url + "/dna/system/api/v1/auth/token"
    response = requests.post(url, auth=authentication, verify=False)
    token = response.json()['Token']
    return token

def get_device_list():
    token = 
    url = "https:// " + dna_center_url + "dna/intent/api/v1/" + 
    header = { : token, 'content-type' : 'application/json' }
    response = requests.get(url, headers=header)
    device_list = 
    print(json.dumps(device_list, indent=4))

if __name__ == "__main__":
    get_device_list()
```

get\_token()

network-device

x-auth-token

response.json()

response.xml

Authorization

- A. Mastered
- B. Not Mastered

**Answer: A**

**Explanation:**

```
import requests
import json
from urllib3.exceptions import InsecureRequestWarning

requests.packages.urllib3.disable_warnings()

dna_center_url = "My_DNA_Center_URL"
authentication = ("dnacenteruser", "dnacenter_password")

def get_token():
    url = "https:// " + dna_center_url + "/dna/system/api/v1/auth/token"
    response = requests.post(url, auth=authentication, verify=False)
    token = response.json()['Token']
    return token

def get_device_list():
    token = get_token()
    url = "https:// " + dna_center_url + "dna/intent/api/v1/" + network-device
    header = { x-auth-token: token, 'content-type' : 'application/json' }
    response = requests.get(url, headers=header)
    device_list = response.json()
    print(json.dumps(device_list, indent=4))

if __name__ == "__main__":
    get_device_list()
```

get\_token()

network-device

x-auth-token

response.json()

response.xml

Authorization

**NEW QUESTION 446**

- (Exam Topic 3)



POST

/v1/meetings

Body Parameters

title

string Required

Meeting title. The title can be a maximum of 128 characters long.

agenda

string

Meeting agenda. The agenda can be a maximum of 2500 characters long.

password

string

Meeting password. Must conform to the site's password complexity settings. Read [password management](#) for details. If not specified, a random password conforming to the site's password rules will be generated automatically.

start

string Required

Date and time for the start of meeting in any [ISO 8601](#) compliant format. start cannot be before current date and time or after end. Duration between start and end cannot be shorter than 10 minutes or longer than 24 hours.

end

string Required

Date and time for the end of meeting in any [ISO 8601](#) compliant format. end cannot be before current date and time or before start. Duration between start and end cannot be shorter than 10 minutes or longer than 24 hours.

Refer to the exhibit. A bespoke meeting booking system must be integrated with Cisco Webex so that meetings are created automatically. Drag and drop the code from the bottom onto the box where the code is missing to create a sample meeting. Not all options are used.

import requests, json

= 'eyJhbGc ... yJbN8'

headers = {

'Authorization': f'Bearer {token}',

'Content-Type': 'application/json'

}

payload = {

"title": "DevNet Webex Discussion",

"password": "AGrtgl234",

"start": "2020-11-10T15:00:00Z",

"end": "2020-11-10T17:00:00Z",

"enabledAutoRecordMeeting": False,

"allowAnyUserToBeCoHost": False

}

response = requests.request(" ", f'{BASE\_URL}/ ',

headers=headers, data=json.dumps( ),

print(response.text.encode('utf8'))

payload

PUT

token

vl/meeting

vl/meetings

POST

- A. Mastered
- B. Not Mastered

Answer: A

Explanation:

Passing Certification Exams Made Easy

visit - <https://www.surepassexam.com>

```
import requests, json

token = 'eyJhbGc ... yJbN8'

headers = {
    'Authorization': f'Bearer {token}',
    'Content-Type': 'application/json'
}

payload = {
    "title": "DevNet Webex Discussion",
    "password": "AGrtgl234",
    "start": "2020-11-10T15:00:00Z",
    "end": "2020-11-10T17:00:00Z",
    "enabledAutoRecordMeeting": False,
    "allowAnyUserToBeCoHost": False
}

response = requests.request("POST", f'{BASE_URL}/vl/meetings',
    headers=headers, data=json.dumps(payload))
print(response.text.encode('utf8'))
```

payload	PUT	token
vl/meeting	vl/meetings	POST

NEW QUESTION 447

.....

## Thank You for Trying Our Product

### We offer two products:

1st - We have Practice Tests Software with Actual Exam Questions

2nd - Questions and Answers in PDF Format

### 200-901 Practice Exam Features:

- \* 200-901 Questions and Answers Updated Frequently
- \* 200-901 Practice Questions Verified by Expert Senior Certified Staff
- \* 200-901 Most Realistic Questions that Guarantee you a Pass on Your First Try
- \* 200-901 Practice Test Questions in Multiple Choice Formats and Updates for 1 Year

**100% Actual & Verified — Instant Download, Please Click**  
**[Order The 200-901 Practice Test Here](#)**