



HP

Exam Questions HPE0-J68

HPE Storage Solutions

NEW QUESTION 1

- (Exam Topic 1)

Which tool is used to configure an HPE MSA 2052?

- A. InfoSight
- B. SMU
- C. CMC
- D. SSMC

Answer: A

NEW QUESTION 2

- (Exam Topic 1)

You deployed and configured an all-flash Nimble array. The customer wants to attach their Windows-based server to the array. Which HPE tool can you use on the host server to make the integration easier?

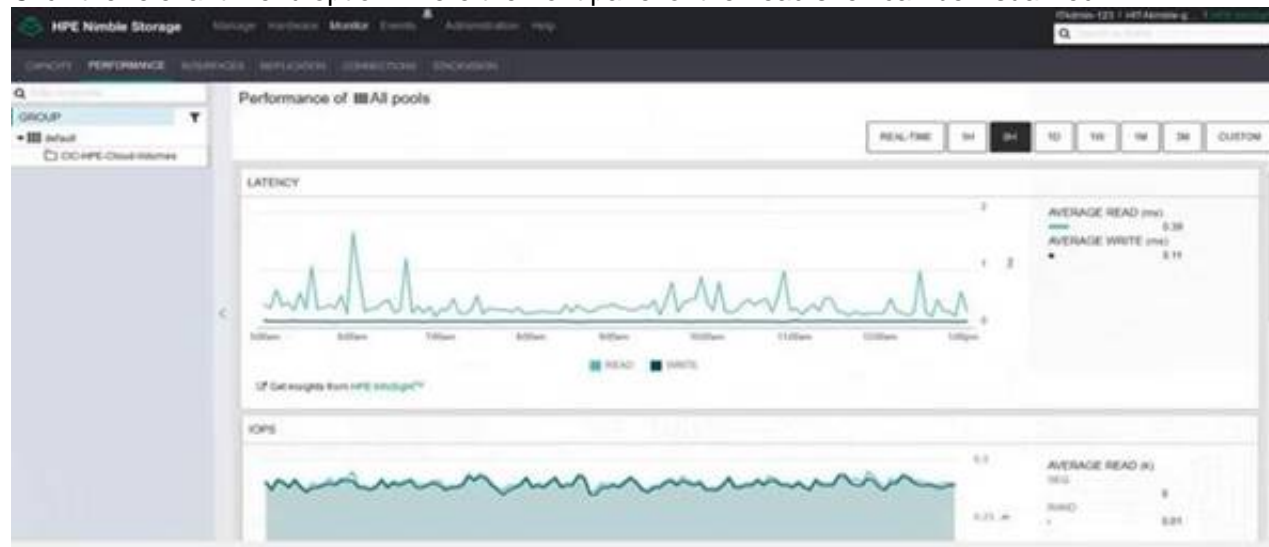
- A. StorServe Management Console
- B. Channel bonding
- C. Connection Manager
- D. Centralized Management Console

Answer: C

NEW QUESTION 3

- (Exam Topic 1)

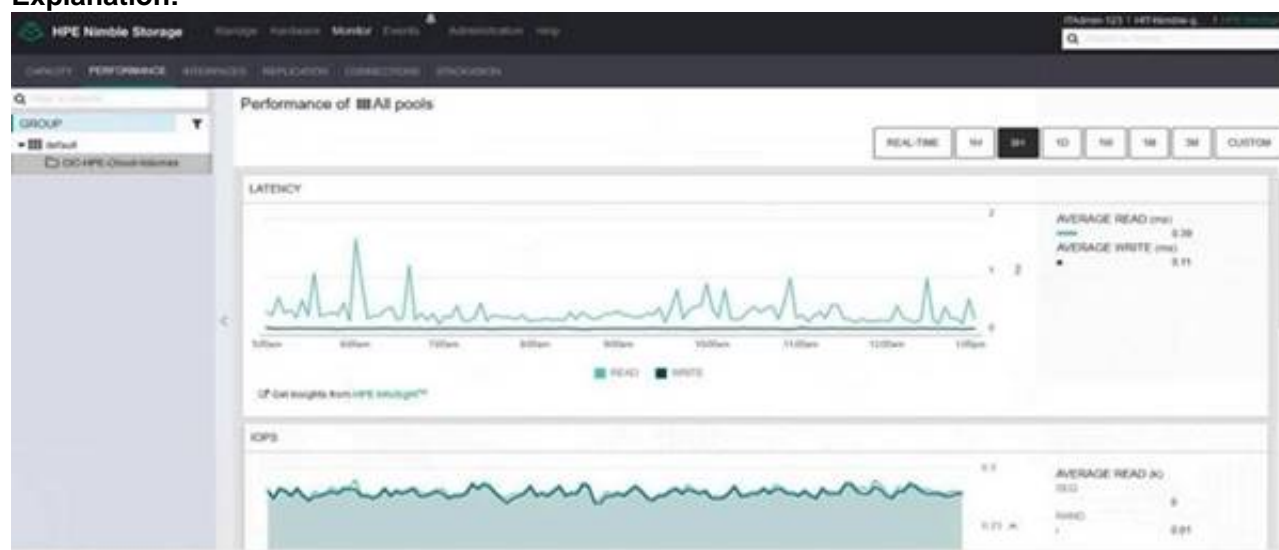
You are handing over the installed array to customer. The customer wants to review the amount of HDDs and SSDs in the system. Click the relevant menu option where the front panel of the head shelf can be visualized.



- A. Mastered
- B. Not Mastered

Answer: A

Explanation:



NEW QUESTION 4

- (Exam Topic 1)

You need to create an N:M relationship between VMware hypervisors and virtual volumes with the least amount of administrative overhead. Click the option where you can create a group of VMware hypervisors for volumes provisioning.



- A. Mastered
- B. Not Mastered

Answer: A

Explanation:
Graphical user interface, text Description automatically generated

NEW QUESTION 5

- (Exam Topic 1)
A customer currently runs MSA 2040 SAS storage system with SFF drives. They are planning a hardware refresh. The customer is using virtual pools only, and is concerned about problematic data migration to the new platform.
How can the update to MSA2050 be performed?

- A. Peer migration license must be purchased for the online migration
- B. Peer migration license must be purchased for the offline migration
- C. Existing drives can be moved to the new system; both systems need to be online
- D. Existing drives can be moved to the new system; both systems need to be offline

Answer: B

NEW QUESTION 6

- (Exam Topic 1)
Refer to the exhibit.



A customer purchased a Primera C650 array to replace several older 3PAR arrays. They plan to upgrade the system as each 3PAR reaches the end of its lease. The initial sizing included 100TB effective capacity for an Oracle database environment. The first 3PAR to come off lease has 100TB of VDI boot images that support thousands of users.
Which addition to the Primera should you recommend?

A)

DRIVES	QTY	RAID	HA	RAW	SPARE	SYSTEM	USABLE
1.92TB SSD SFF	36	Raid 6 (10+2)	<input checked="" type="checkbox"/>	69.08 TB	6.91 TB	1.2 TB	50.81 TB
14TB NL LFF	12	Raid 6 (10+2)	<input checked="" type="checkbox"/>	164.57 TB	27.43 TB	-	114.28 TB
WORKLOADS IO SIZE READ DATA REDUCTION HOST PORTS							ESTIMATED PERFORMANCE 1
Random	8K	70 %	No	8	1,041 IOPS, 28.9 ms		

B)

DRIVES	QTY	RAID	HA	RAW	SPARE	SYSTEM	USABLE
1.92TB SSD SFF	36	Raid 6 (10+2)	<input checked="" type="checkbox"/>	69.08 TB	6.91 TB	-	57.81 TB
2.4TB 10K SFF	60	Raid 6 (10+2)	<input checked="" type="checkbox"/>	143.15 TB	7.16 TB	1.2 TB	112.33 TB
WORKLOADS IO SIZE READ DATA REDUCTION HOST PORTS							ESTIMATED PERFORMANCE 1
Random	8K	70 %	No	8	8,154 IOPS, 29.5 ms		

C)

DRIVES	QTY	RAID	HA	RAW	SPARE	SYSTEM	USABLE
1.92TB SSD SFF	36	Raid 6 (10+2)	<input checked="" type="checkbox"/>	69.08 TB	6.91 TB	1.2 TB	50.81 TB
2.4TB 10K SFF	36	Raid 6 (10+2)	<input checked="" type="checkbox"/>	85.89 TB	4.77 TB	-	68.6 TB
WORKLOADS	IO SIZE	READ	DATA REDUCTION	HOST PORTS	ESTIMATED PERFORMANCE		
Random	8K	70 %	No	8	4,815 IOPS, 29.3 ms		

D)

DRIVES	QTY	RAID	HA	RAW	SPARE	SYSTEM	USABLE
1.92TB SSD SFF	36	Raid 6 (10+2)	<input checked="" type="checkbox"/>	69.08 TB	11.05 TB	1.2 TB	47.36 TB
15.36TB SSD SFF	8	Raid 6 (6+2)	<input checked="" type="checkbox"/>	122.84 TB	19.66 TB	-	77.39 TB
WORKLOADS	IO SIZE	READ	DATA REDUCTION	HOST PORTS	ESTIMATED PERFORMANCE		
Random	8K	70 %	Yes	8	78,423 IOPS, 0.4 ms		

- A. Option A
- B. Option B
- C. Option C
- D. Option D

Answer: B

NEW QUESTION 7

- (Exam Topic 1)
You are designing an HPE MSA iSCSI for a customer.
Which components are typically part of the solution? (Choose two.)

- A. Drives
- B. SFPs
- C. Service Processor
- D. All-inclusive Multi-system software
- E. Switch zones

Answer: AB

NEW QUESTION 8

- (Exam Topic 1)
Match the MSA architecture components with their descriptions.

Component		Description
Tier	<input type="text"/>	aggregation of disks of the same type using a specific RAID level
Virtual disk group	<input type="text"/>	automatically assigned performance characteristic
Volume group	<input type="text"/>	collection of virtual volumes allowing group management functions
Virtual pool	<input type="text"/>	collection of virtual disk groups
Virtual volume	<input type="text"/>	logical subdivision of a virtual pool that can be mapped to a host

- A. Mastered
- B. Not Mastered

Answer: A

Explanation:
Graphical user interface Description automatically generated with medium confidence

NEW QUESTION 9

- (Exam Topic 1)
A customer uses Veeam to backup their entire datacenter.
Which Veeam feature allows them to recover a single email from their Exchange server?

- A. Changed block tracking
- B. Explorer for Storage Snapshots
- C. Data Mover Service
- D. SureBackup

Answer: B

NEW QUESTION 10

- (Exam Topic 1)
A customer is planning to replace their existing LTO-6 tape library with a new HPE StoreEver MSL2024 tape library. They want to reuse their existing LTO-6 tape cartridges for reads and writes.

What is the latest tape drive technology that will provide backward compatibility?

- A. LTO8
- B. LTO5
- C. LTO6
- D. LTO7

Answer: D

NEW QUESTION 10

- (Exam Topic 1)

You are installing an HPE 3PAR StoreServ solution and need to integrate the array with the 3rd party monitoring application customer is using. Which technology can be configured at 3PAR to support forwarding events from the array to the customer's monitoring application?

- A. IPMI
- B. NTP
- C. SNMPv3
- D. DMI

Answer: C

NEW QUESTION 12

- (Exam Topic 1)

What is the typical protocol used to access data from object storage?

- A. FC
- B. NVMe
- C. HTTP
- D. iSCSI

Answer: A

NEW QUESTION 15

- (Exam Topic 1)

A customer successfully implemented an HPE Primera solution.

Which tool can be used to verify performance counters, such as IOPS, match customer requirements?

- A. NinjaCrawler
- B. OneView
- C. Recovery Manager Central
- D. Primera on-node management GUI

Answer: D

NEW QUESTION 18

- (Exam Topic 1)

Refer to the exhibit.



You are designing a new Primera solution and demonstrating performance numbers to the customer. The customer reviews the configuration and requests a change to the configuration that will increase Random Write IOPS.

Which action will satisfy the customer request?

- A. Add more disks of smaller capacity
- B. Upgrade the HPE Primera base model
- C. Change to larger SSDs
- D. Add more FC Ports

Answer: C

NEW QUESTION 19

- (Exam Topic 1)

A customer asks you for a recommendation on setting up their new StoreOnce appliance. They plan to use NetBackup and need the highest performance setup they can get. Their local hosts are connected via FC and the rest are connected via a WAN. Which backup target type should you recommend?

- A. VTL
- B. S3
- C. CIFS
- D. Catalyst

Answer: A

NEW QUESTION 22

- (Exam Topic 1)

A customer is planning to upgrade their HF40 controllers to support additional I/O requirements. To which model can they upgrade to meet their new requirements?

- A. AF60
- B. AF40
- C. HF60
- D. HF40C

Answer: D

NEW QUESTION 27

- (Exam Topic 1)

Which feature allows HPE Primera, HPE Nimble, and HPE XP arrays to work with third-party management tools?

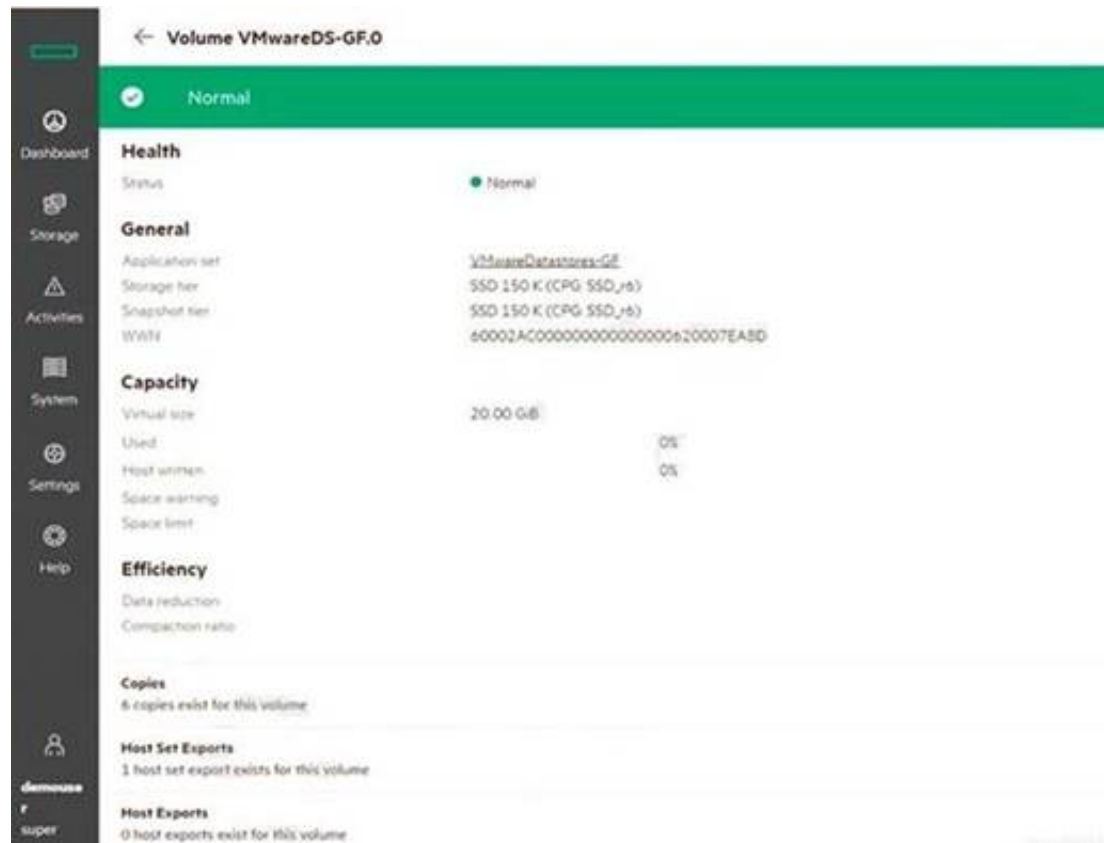
- A. REST API
- B. Data Protection Manager (DPM)
- C. StoreServe Management Console (SSMC)
- D. Service Processor

Answer: A

NEW QUESTION 28

- (Exam Topic 1)

Refer to the exhibit.



You are configuring a new HPE array and verifying properties of a set of volumes. Which RAID level is used on the VMwareDatastores-GF volume?

- A. RAID 0
- B. RAID 6
- C. Triple Parity+
- D. RAID 5

Answer: D

NEW QUESTION 33

- (Exam Topic 1)

You have proposed that a customer replace their legacy SAN switches with new ?-Series switches. They are concerned about the management of all the devices, so you have included SANnav in the proposal.

What are the benefits of SANnav that you should emphasize to this customer? (Choose two.)

- A. It runs in a dedicated JVM
- B. It offers automated SPOCK validation
- C. It runs in a browser
- D. It provides a global View
- E. It provides fine-grain visibility into Storage Fabrics (FC + Ethernet)

Answer: CD

NEW QUESTION 36

- (Exam Topic 1)

A customer environment includes:

10 DL380 Gen8 servers in a VMware Cluster

2 MSA storage arrays

2 8GB b-series fibre channel switches

The customer needs to replace their environment because it is end of life. They have limited budget. The customer is primarily concerned with management because they have limited IT staff, and they want to move away from fibre channel.

Which HPE Storage should you recommend?

- A. HPE Primera
- B. HPE XP8
- C. HPE Nimble dHCI
- D. HPE StoreOnce

Answer: A

NEW QUESTION 38

- (Exam Topic 1)

Select the correct initiation option for each HPE Primera function.

Answer Area		
User Initiated		Stripe data across drives
Autonomic		Create Virtual Volumes
		Create Common Provisioning Groups
		Create RAID-6 Virtual Volumes
		Optional Performance Management
		Export LUNs

- A. Mastered
- B. Not Mastered

Answer: A

Explanation:

Graphical user interface, application Description automatically generated

NEW QUESTION 39

- (Exam Topic 1)

A customer is implementing a new high performance database environment.

What type of storage should you recommend?

- A. scale-out storage
- B. object store
- C. system-defined storage
- D. network-attached storage

Answer: A

NEW QUESTION 40

- (Exam Topic 1)

You are proposing a StoreOnce solution to a customer that has always used tape for a backup target. What should you suggest to ensure that the StoreOnce deduplication is correctly sized?

- A. StoreOnce timeless storage
- B. DDAnalyzer
- C. proof of concept with StoreOnce VSA
- D. OCA

Answer: B

NEW QUESTION 43

- (Exam Topic 2)

Which feature enables a non-disruptive environment where host-based multi-pathing software is not affected in the event of a firmware upgrade?

- A. HPE 3PAR Access Guard
- B. HPE 3PAR Persistent Ports
- C. HPE 3PAR Persistent Cache
- D. HPE 3PAR MPIO

Answer: B

NEW QUESTION 44

- (Exam Topic 2)

Which storage principle would benefits of customer who has several departments in their organization with different storage needs?

- A. Autonomic Management
- B. Federated storage
- C. Scale out storage
- D. Multi-tenancy

Answer: D

NEW QUESTION 48

- (Exam Topic 2)

A customer has deployed an HPE 3PAR StoreServ 8400 with two nodes and three additional disk enclosure .They want to expand the solution with two additional nodes and three additional disk enclosure ..What must you do to expand the customers solution?

- A. The new disks must be imported before the new nodes can be added
- B. The existing nodes need to be take Offline
- C. The system should be updated to the latest supported OS before the hardware expansion
- D. The new nodes and enclosure must be placed in an adjacent racks

Answer: C

NEW QUESTION 52

- (Exam Topic 2)

Which built-in HPE 3PAR StoreServ technology reduces database transaction logs response time?

- A. Express Writes
- B. Adaptive Flash Cache
- C. Thin provisioning
- D. Thin Deduplication

Answer: B

NEW QUESTION 57

- (Exam Topic 2)

Which functionality available in an HPE 3 Par StoreServ 8400 system that is not available in an HPE 3par Storesrve 7200

- A. Data at Rest Encryption
- B. Persistent Checksum end-to-end data integrity (correct)
- C. Adaptive optimization and dynamic Optimization
- D. Online import license

Answer: B

NEW QUESTION 59

- (Exam Topic 2)

Match the HPE converged Strategy principle with its function

- A. Federated Storage:- Move data between storage systems in peer-to-peer relationship simply, dynamically and nondestructively
- B. Deduplication:-Reduce allocated capacity by eliminating data redundancy
- C. Thin provisioning:-Reduce TCO ,Opex and CPEX by using virtualization technology to make storage resources more efficient.
- D. Storage tiering:-Use combination of I/O accelerator to place data to meet price, performance, and latency requirements .
- E. Storage virtualization:- Deliver simplified management ,higher utilization ,efficient, and agility by separating the logical and physical resource.

Answer: E

NEW QUESTION 64

- (Exam Topic 2)

A customer's environment consists of two HPE Synergy frames running VMware vSphere, HPE FlexFabric 5700 switches, and one HPE Nimble HF-series array connected via 10GbE-T ports to the FlexFabric switches. The customer is concerned about performance management of the whole solution stack. When using infosight with VMvision and analyzing end-to-end latency, which of the components within the stack are displayed? (Choose Three)

- A. ISCSI network(SAN)
- B. Ethernet network (LAN)
- C. storage
- D. application
- E. operating system
- F. host

Answer: ADF

NEW QUESTION 67

- (Exam Topic 2)

A customer is evaluating an HPE 3PAR StoreServ system in a proof-of-concept project. The customer wants to receive emails about important storage system events and alerts.

What feature do you need to configure?

- A. HPE OneView integration
- B. Secure Service Agent
- C. Real-time Alert Processing
- D. Local Notification Service

Answer: D

NEW QUESTION 68

- (Exam Topic 2)

Which statement is correct when discussing the RAID layout of an HPE Nimble HF-series storage system?

- A. RAID 6 triple parity is set up -21 data drives are used for RAID stripes.
- B. RAID 6 triple parity is set up -18 data drives are used for RAID stripes.
- C. RAID 6 or RAID 1 can be set up -24 data drives are used for RAID stripes.
- D. RAID 6 or RAID 1 can be set up -18 data drives are used for RAID stripes.

Answer: A

NEW QUESTION 70

- (Exam Topic 2)

A customer needs to add another HPE 3PAR StoreServ system and plans to use the federated storage approach.

Which advantages can the customer expect? (Choose two.)

- A. load balancing
- B. reduced power, cooling, and environmental impacts
- C. allows multiple management tools
- D. easier migration
- E. federated deduplication

Answer: AD

Explanation:

Federated storage—Move data between storage systems in a peer-to-peer relationship simply, dynamically, and nondisruptively to improve storage utilization, balance workloads, and ease storage migration.

NEW QUESTION 71

- (Exam Topic 2)

A customer is a cloud service provider with infrastructure powered by HPE 3PAR Storeserv 9000. The customer is concerned about their ability to ensure the quality of service and protect their tenants from unpredictable bursts of I/O from other tenants. What should you recommend to your customer?

- A. Use priority optimization to enable service level for workloads
- B. Use virtual domain to automatically set multi-tenant policies
- C. Use dynamic optimization to automatically manage quality of service
- D. Use adaptive optimization to optimize service level automatically

Answer: A

NEW QUESTION 73

- (Exam Topic 2)

Which type of networking switch handles both Ethernet and fibre channel traffic?

- A. Director
- B. Virtual
- C. Edge
- D. Converged

Answer: D

NEW QUESTION 77

- (Exam Topic 2)

Which 3PAR storeServ feature allows the host to continue I/O uninterrupted during a firmware update?

- A. Persistent Memory
- B. Persistent port (96)
- C. Peer persistenceD Persistent Cache

Answer: B

NEW QUESTION 79

- (Exam Topic 2)

A customer uses Recovery manager central for Vmware (RMC-V).They need to ability to perform granular recovery of application item directly from backups...Which solution integrates with RMC-V to provide the desired requirements?

- A. Veeam Backup & Replication
- B. Netbackup
- C. StoreOnce cloudbank
- D. CommVault

Answer: A

NEW QUESTION 84

- (Exam Topic 2)

Exhibit:



The customer has upgraded the first of their two HPE StoreServ 8200to the latest inform OS version to take the advantage of the compression feature .You have been asked to design the storage configuration to support oracle database volume to utilize HPE 3PAR compression . Based on the analysis of the array .what would be your suggestion to implement the requested change?

- A. Install the catalyst agent on the oracle server to enable inline compression on the selected VV
- B. Configure the source-side the compression to offload compression to the Host
- C. Balance the workloads between the arrays to have enough headroom for compression
- D. Consider adding another node pair for compression to work efficiently

Answer: A

NEW QUESTION 86

- (Exam Topic 2)

A customer with an HPE 3PAR StoreServ needs to upgrade their aging backup solution to a more advanced solution using snapshots and deduplication. Which HPE products would meet the customer's needs? (Choose two.)

- A. HPE 3PAR File Persona
- B. HPE StoreEver
- C. HPE 3PAR Remote Copy
- D. HPE StoreOnce
- E. HPE Recovery Manager Central

Answer: DE

NEW QUESTION 91

- (Exam Topic 2)

Which storage tool in the storage assessment foundry provide data protection analysis?

- A. Ninja protected+ (318)
- B. NinjaCrawler
- C. Ninja Thin
- D. Ninja Stars

Answer: A

NEW QUESTION 94

- (Exam Topic 2)

A customer wants to expand his cascaded B-series based SAN but is concerned about latencies within the SAN backend. You recommend changing the topology to a full mesh.

Which switch feature will ensure that the latencies in the backend are at the lowest possible level?

- A. LACP
- B. NPIV
- C. FSPF

D. VSF

Answer: C

NEW QUESTION 98

- (Exam Topic 2)

What is the benefit of HPE Synergy? (Choose two.)

- A. It supports up to three HPE StoreVirtual VSA nodes for storage RAID.
- B. It can compose and reclaim DAS storage.
- C. It supports HPE BladeSystem c-class FlexFabric interconnect modules.
- D. It can use HPE 3PAR File Persona for object storage.
- E. It can prevent block storage services from HPE 3PAR as part of the resource pool.

Answer: BE

NEW QUESTION 103

- (Exam Topic 2)

A large enterprise is experiencing exponential data growth of their existing Oracle databases. They are concerned about their increasing backup windows and the risk of non-compliance with recovery time objectives increase of data corruption in primary storage. Their primary storage is an 3PAR Storeserv 8400, and their backup target is an HPE StoreOnce System. Which HPE storage solution allow the customer to migrate this risk?

- A. RMC Express protect
- B. Catalyst in-Flight compression
- C. 3 PAR remote copy
- D. StoreOnce unified deduplication

Answer: A

NEW QUESTION 104

- (Exam Topic 2)

What can move data directly from a snapshot to backup storage independent of backup server software?

- A. SSMC
- B. Virtual Lock
- C. CLI
- D. Express Protect

Answer: D

Explanation:

The Express Protect feature offers data protection by facilitating Express Protect of snapshots from HPE 3PAR StoreServ to HPE StoreOnce.

NEW QUESTION 105

- (Exam Topic 2)

Which function is built into the HPE 3par OS and enable users to move data and workloads between array without impacting applications, users, or services?

- A. Peer persistence
- B. Adaptive optimization
- C. Peer motion
- D. Remote copy

Answer: A

NEW QUESTION 110

- (Exam Topic 2)

What is the benefits of HPE synergy(Select 2)

- A. It can present block storage services from HPE 3par as part of the resource pool
- B. It support up to 3 HPE store Virtual VSA nodes for storage RAID
- C. It can use HPE 3PAR file persona for objet storage
- D. It can compose and reclaim DAS storage
- E. It support HPE blade system C-Class Flex Fabrics Interconnect module (need to check)

Answer: AD

NEW QUESTION 112

- (Exam Topic 2)

A customer has mission-critical applications that intermittently experience heavy disk I/O. The storage speed has the most impact on the application's performance. The customer does not want to dedicate SSD disks to these applications because additional performance is only needed periodically, and moving the volumes between tiers takes too long.

Which HPE StoreVirtual VSA feature can address this customer's challenge?

- A. Storage virtualization
- B. Space Reclamation
- C. Thin Provisioning
- D. Adaptive Optimization

Answer: D

NEW QUESTION 116

- (Exam Topic 2)

You are advising a customer on a new backup strategy to deploy HPE StoreOnce. What should you recommend to ensure the best storage utilization and performance?

- A. consolidate activity windows for housekeeping tasks
- B. size solution for a single backup device
- C. combine management and backup Ethernet traffic
- D. use separate backup targets for different data types

Answer: A

NEW QUESTION 120

- (Exam Topic 2)

A customer's growing environment has a mix of HPE 3PAR StoreServ 8200 with 10K HDD, HPE 3PAR StoreServ 9450, and HPE 3PAR StoreServ 2080D with 3 tiers of storage deployed in the same data center. The customer needs to optimize performance by being able to move workloads to the most appropriate array as needed.

Which solution enables the customer to achieve this goal?

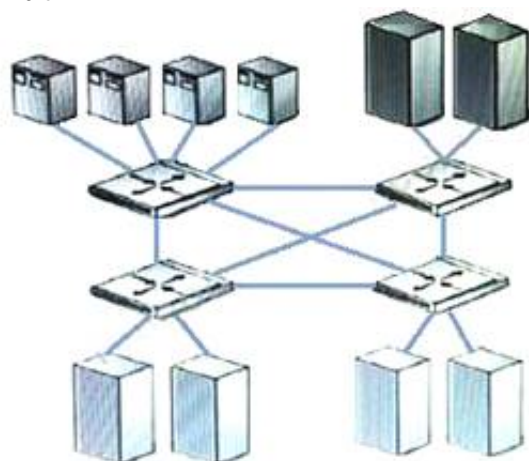
- A. HPE OneView to automate cpg migration based on user defined policies.
- B. HPE 3PAR Remote Copy in a Synchronous Long Distance topology.
- C. HPE Smart SAN to provide autonomic federated management.
- D. HPE 3PAR Peer Motion with SSMC to manage storage federation.

Answer: D

NEW QUESTION 125

- (Exam Topic 2)

Exhibit:



Which fabric design is shown?

- A. meshed
- B. single fabric
- C. cascaded
- D. core-edge

Answer: A

NEW QUESTION 130

- (Exam Topic 2)

During a proof-of-concept you need to implement an inter-switch-link (ISL) between two HPE SN6000B switches. Which port mode must be set enable communication between the switches?

- A. N_PORT
- B. FL_PORT (WRONG)
- C. F_PORT
- D. E_PORT (Correct)

Answer: D

NEW QUESTION 131

- (Exam Topic 2)

A customer is looking for a centralized file-sharing solution that can provide print services in addition to 15TB of storage. Which solution component should you recommend?

- A. FC switch
- B. NAS
- C. FC-based array
- D. Disk enclosure with integrated SAS switch

Answer: B

NEW QUESTION 133

- (Exam Topic 2)

A Company using an existing 1GB iSCSI storage array is experiencing storage access

performance issue. They are interested in deploying HPE 3PAR Storeserv with 16GB /S FC end to-end to improve the performance to the minimal changes to the environment. The existing environment consists of these HPE products

* HPE C7000 Blade system platinum blade enclosure with HP virtual connect Flex 10 interconnect modules.

* Configuration of HPE Proliant Gen8 and Gen9 blade servers

* HPE 2920 Switches

Which HPE products must be included to support new HPE 3PAR Storeserv?(Select two)

A. HPE B-Series 16GB SAN switch for HPE Blade system C-class series

B. HPE 16GB/s Fibre channel HBA for Blade servers

C. HP 5900CP switch series with 16GB/S SFP+ Modules

D. HPE Flex fabric 20GB,2-Port 630 FLB adapter

E. HPE Virtual connect Flex fabric 20/40 f8 modules

Answer: AB

NEW QUESTION 137

- (Exam Topic 2)

A customer needs to store a large amount of unstructured data that must be queried quickly. Which type of storage meets the customer's needs?

A. object

B. hash

C. file

D. flash

Answer: A

NEW QUESTION 139

- (Exam Topic 2)

What allows volume level data to be copied between an HPE 3PAR and an HPE store Virtual VSA?

A. Store virtual Peer motion

B. HPE 3PAR Remote Copy

C. Recovery Manager central

D. StoreServ Peer Motion

Answer: C

NEW QUESTION 140

- (Exam Topic 2)

A customer has a large amount of the data on their Primera that is mission critical. The business needs RPO to be under 5 minutes.

Which protection technology should you recommend?

A. synchronous replication

B. asynchronous replication

C. archiving

D. backup to tape

Answer: A

NEW QUESTION 141

- (Exam Topic 2)

You are planning a single-site Nimble solution with iSCSI connectivity. Two 10GbE SFP+ dual port NICS are included in the configuration. You designed an intelligent Resilient Framework (IRF) stack with HPE FlexFabric 5900CP switches.

Which statements is correct when discussing the IRF limits for this configuration?

A. When connecting an iSCSI storage to an IRF stack, a minimum of four 10GbE ports must be used per switch.

B. A maximum of two switches can be used in an IRF stack when connecting storage.

C. In an IRF stack with storage connectivity, the 40GbE ports cannot be used.

D. The used IRF ports for iSCSI traffic have to be configured as 10GbE converged ports.

Answer: B

NEW QUESTION 142

- (Exam Topic 2)

A customer is concerned about the business risks of non-compliance for long-term data protection, retention, immutability, and encryption on petabytes of data consisting of millions of objects in a global namespace across multiple geographic locations.

Which products should you recommend to the customer to address their concern? (Choose two.)

A. HPE StoreOnce Systems

B. HPE Complete Veeam

C. HPE Complete iTernity iCAS

D. HPE Scalify RING on HPE Apollo Servers

E. HPE 3PAR StoreServ 9000

Answer: AC

NEW QUESTION 147

- (Exam Topic 2)

A customer run several HPE 3PAR storeserv system in their environment using data rest encryption .The customer needs to add an HPE 3PAR Storeserv 8000system to the storage pool and an external key manager for all systems.. What is the requirement for this solution?

- A. Boot server for the existing 3PAR storeserv array must be replaced with self-encrypting drive
- B. All drives of the new HPE 3PAR storeserv array must be self-encrypting
- C. HPE ESKM FIPS mode must be disabled by the administrator
- D. Data on the existing HPE 3PAR storeserv array must be decrypted and re-encrypted with new keys

Answer: B

NEW QUESTION 152

- (Exam Topic 2)

Which protocols are currently used in the front end by HPE 3PAR StoreServ systems? (Choose two.)

- A. iSCSI
- B. Infiniband
- C. SAS
- D. NVMe
- E. FC

Answer: AE

NEW QUESTION 155

- (Exam Topic 2)

A customer need to implement a new SAN fabric for their growing environment .The new SAN should provide a high performance and port-efficient network with many-to-many connectivity .Because of changing requirement and the possible acquisition of another company in the near future. The customer cannot predict the I/O traffic pattern within the SAN .The customer also concerned about availability. Which type of SAN topology should you recommend?

- A. Core-edge fabric
- B. Single switch fabric
- C. Cascaded fabric
- D. Meshed fabric

Answer: D

NEW QUESTION 160

- (Exam Topic 2)

Which HPE storage solutions offer a two-tier backup solution for hybrid cloud with optimal recovery time? (Choose two.)

- A. Simplivity 380
- B. Nimble SF series
- C. 3PAR 8000 series
- D. StoreOnce with Catalyst
- E. Nimble CS series

Answer: AD

NEW QUESTION 165

- (Exam Topic 2)

What is used to migrate data between nodes in an HPE StoreVirtual VSA environment?

- A. Network RAID
- B. Peer Motion
- C. SmartClone
- D. Remote Copy

Answer: B

Explanation:

Integrated with HPE Recovery Manager Central for seamless data movement to StoreOnce Backup appliances and StoreOnce VSA, and bidirectional replication with 3PAR StoreServ arrays (Peer Copy).

NEW QUESTION 168

- (Exam Topic 2)

A customer has an excisting environment with 3PAR,Nimble and MSA. They are providing file servicing from all arrays with multiple virtual machine but preference is not adequate.

What should you add to the environment to increase performance ,increase availability, and reduce management overhead?

- A. StoreEasy 3850 Gateway
- B. StoreEasy 5000
- C. 3PAR File Persona
- D. Simplivity 380

Answer: A

NEW QUESTION 169

- (Exam Topic 2)

A customer need to server 40TB via file protocols including SMB and FTP to a board range of client operating system in one location .security protocol dictate that data must be encrypted with FIPS 140-2 compliance. Which HPE storage solution you recommend?

- A. HPE MSA 2052 storage with HPE StoreEasy 3850 Gateway
- B. HPE 3PAR 8200 using self-encrypting drive with 3PAR file persona
- C. HPE StoreOnce 5500with data in fight encryption .
- D. HPE XP7 storage with encryption ready disk adapters

Answer: B

NEW QUESTION 171

- (Exam Topic 2)

A customer migrate their infrastructure from a 3rd party storage to a Nimble environment. During an architecture workshop, you discuss VMvision with the customer and the system engineer. Which statement is correct when implementing performance monitoring using VMVision?

- A. Nibmle service processor collects relevant per VM performance data and send them using SSL port 443 to VMvision
- B. VMvision is an agentless integration into infosight and needs only the Vcenter server appliance credentials to connec
- C. (page 112)
- D. VMware vSphere storage API's array integration (VAAI)has to be configured to combine storage and VM performance metrics
- E. SNMP trap service has to be configured to send traps to infosight and integrate performance data using VMvision.

Answer: C

NEW QUESTION 173

- (Exam Topic 2)

A customer with restricted budget has an existing HPE 3PAR storeserver 8200 using 10kfast class and near line drives because of the implementation of new application .the workload has shifted to be read intensive therefore ,they want to increase the read I/O performance What should they add to their environment ?

- A. A tier with 15k fast class 600 GB drive for new CPG, configure AO policy to advantage of new resources
- B. Two 400 GB SSD drives and enable adaptive flash cache (page 173) eed to check
- C. A tier with 15k fast class drive and implement thin provisioned deduplicated virtual volumes
- D. A tier of SSD and implement thin provisioned virtual volume

Answer: B

NEW QUESTION 175

.....

Thank You for Trying Our Product

We offer two products:

1st - We have Practice Tests Software with Actual Exam Questions

2nd - Questions and Answers in PDF Format

HPE0-J68 Practice Exam Features:

- * HPE0-J68 Questions and Answers Updated Frequently
- * HPE0-J68 Practice Questions Verified by Expert Senior Certified Staff
- * HPE0-J68 Most Realistic Questions that Guarantee you a Pass on Your FirstTry
- * HPE0-J68 Practice Test Questions in Multiple Choice Formats and Updatesfor 1 Year

100% Actual & Verified — Instant Download, Please Click
[Order The HPE0-J68 Practice Test Here](#)