

Cisco

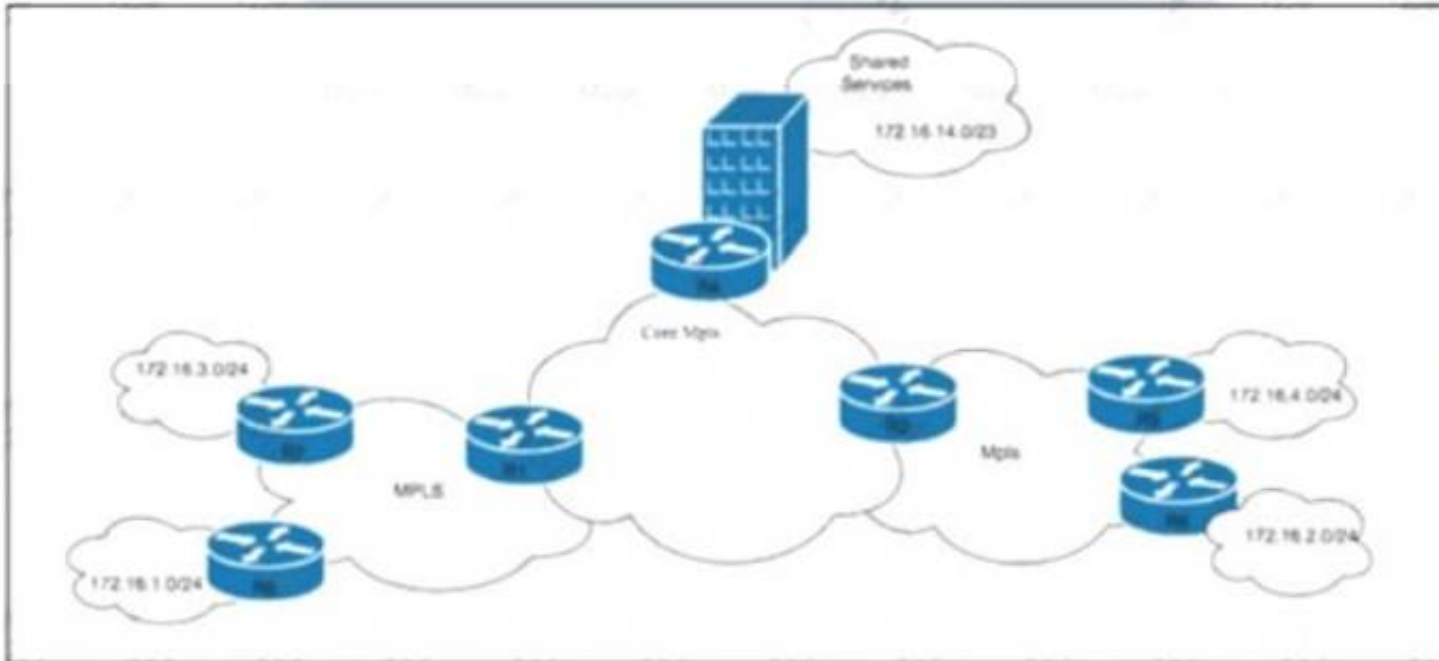
Exam Questions 350-501

Implementing and Operating Cisco Service Provider Network Core Technologies



NEW QUESTION 1

Refer to the exhibit.



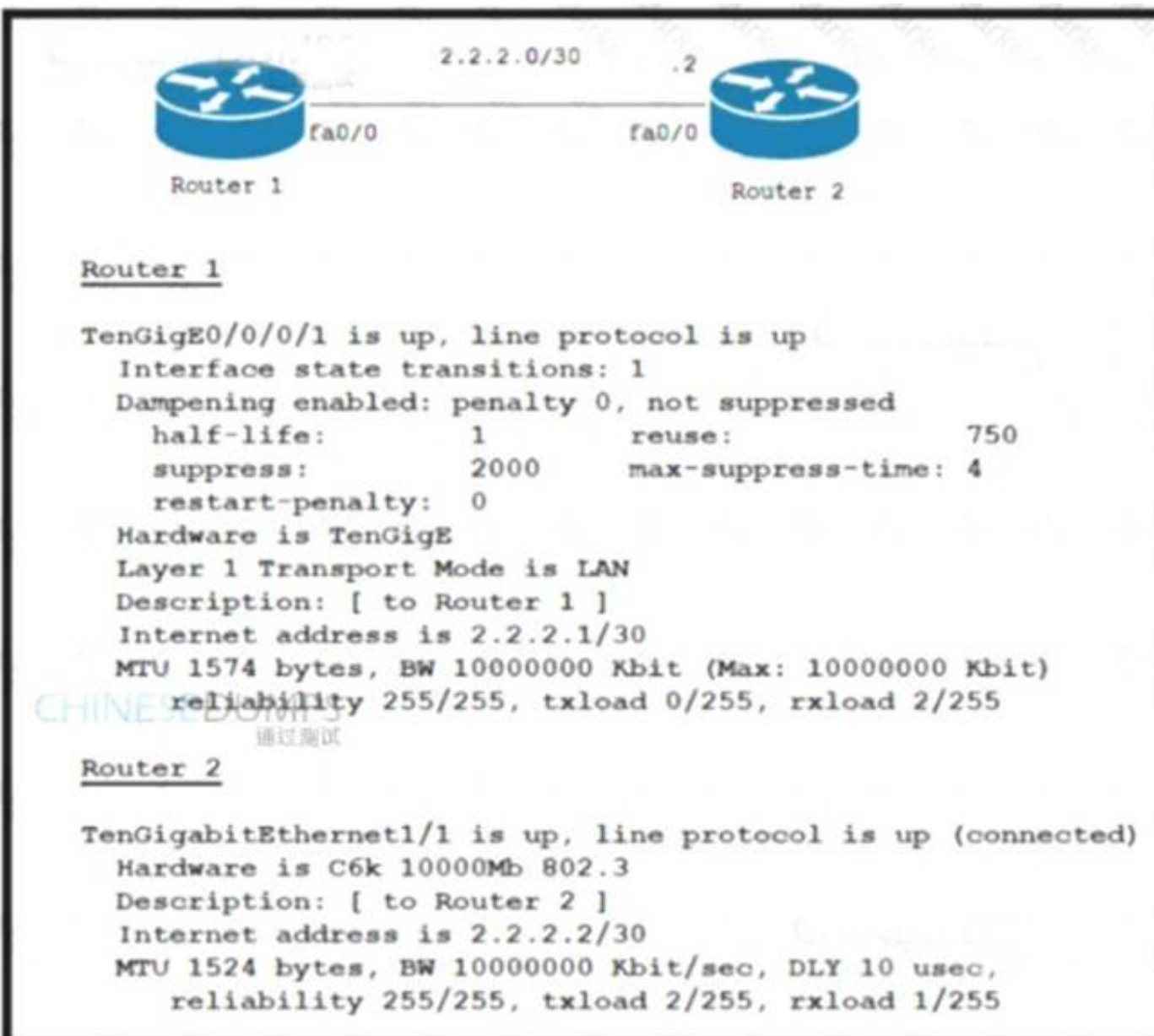
The ISP is implementing a new hosting-as-a-service solution for its business customers. Service accessibility must be unique and separate for each customer. The network architect must ensure that multiple paths toward the hosting-as-a-service solution are always available. Basic protection against traffic black-holing on the MPLS network is required in case of link failure. Which two actions must the engineering team perform to meet the requirements? (Choose two.)

- A. Create the hosting-as-a-service VRF on router R4 and configure it with the route target both 65123:88 command.
- B. Configure the fast-reroute per-prefix command for the IS-IS protocol in the MPLS network and enable the BGP route-reflector feature on R2.
- C. Enable the VRF-Lite feature on router R4 and enable BGP address-family VPNv4.
- D. Configure the mpls ldp sync command in the MPLS network with the BGP additional-paths receive and additional-paths send options.
- E. Configure the fast-hello command under the IS-IS routing protocol with the BGP multipath 2 option enabled.

Answer: BD

NEW QUESTION 2

Refer to the exhibit.



Router 1 and Router 2 were installed in the data center. Router 1 is the core router in the network, but it fails to establish an OSPF peering with Router 2. and customer traffic is unable to pass. Router 1 also reports an increase in CPU and memory usage. However, the CPU for R2 is stable. Which action resolves this issue?

- A. Disable Cisco Express Forwarding on Router 2.
- B. Change the transport mode to WAN on Router 1.
- C. Change the MTU to 1524 on Router 1.
- D. Enable MPLS on Router 2.

Answer: C

NEW QUESTION 3

Refer to the exhibit:

```

R1
router ospf 1
  area 2 stub no-summary

R2
router ospf 1
  area 3 nssa
  
```

In which way does router R1 operate differently than router R2?

- A. R1 sends LSA type 2 only, while R2 sends type 1 and type 7 LSAs
- B. R1 sends LSA types 1 and 2, while R2 sends type 1, 2, and 7 LSAs
- C. R1 sends LSA type 2 only and R2 sends LSA type 1 only
- D. R1 sends LSA types 5 and 7, while R2 sends type 1, 2, and 7 LSAs

Answer: B

NEW QUESTION 4

Refer to the exhibit.

```

mpls traffic-eng tunnels

segment-routing mpls
connected-prefix-sid-map
address-family ipv4
  192.168.1.1/32 index 10 range 1
exit-address-family

set-attributes
address-family ipv4
sr-label-preferred
exit-address-family

interface Loopback1
ip address 192.168.1.1 255 255.255.255
ip router isis 1

int gig0/0
ip address 192.168.1.2 255.255.255.0
ip router isis 1
mpls traffic-eng tunnels
isis network point-to-point

router isis 1
net 50.0000.0000.0000.0001.00
metric-style wide
is-type level-1
segment-routing mpls
segment-routing prefix-sid-map advertise-local
mpls traffic-eng router-id Loopback1
mpls traffic-eng level-1
  
```

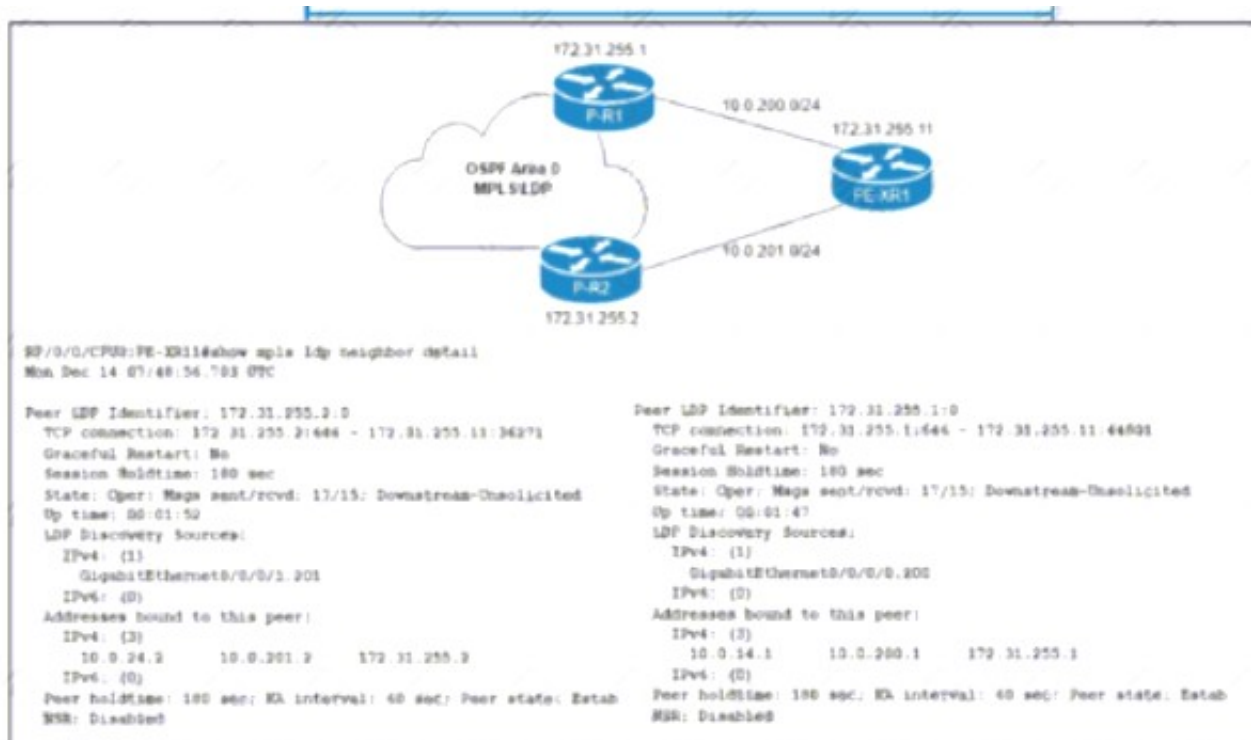
What type of configuration is it?

- A. It is configuration that requires an explicit Cisco MPLS TE path to be configured for the tunnel to run.
- B. It is configuration that requires OSPF to also be running to have optimized Cisco MPLS TE tunnels.
- C. It is configuration for the head-end router of a Cisco MPLS TE tunnel with segment routing.
- D. It is configuration that requires a dynamic Cisco MPLS TE path to be configured for the tunnel to run.

Answer: C

NEW QUESTION 5

Refer to the exhibit.



The network team must implement MPLS LDP session protection with two requirements:

Session protection is provided for core loopback IP addresses only.

The LDP session must remain operational for one hour when the WAN link on PE-XR1 fails. Which configuration must the team implement on PE-XR1?

- A. configure terminalipv4 access-list LDP-SESSION-PROTECTION permit ipv4 172.31.255.0 0.0.0.255 any!mpls ldp session protection for LDP-SESSION-PROTECTION duration 60 end
- B. configure terminalipv4 access-list LDP-SESSION-PROTECTION permit ipv4 172.31.255.0 0.0.0.255 any!mpls ldp session protection for LDP-SESSION-PROTECTION duration 3600 end
- C. configure terminalipv4 access-list LDP-SESSION-PROTECTION permit ipv4 172.31.255.0 0.0.0.255 anypermit ipv4 10.0.0.0 0.0.255.255 any!mpls ldp session protection for LDP-SESSION-PROTECTION duration 60end
- D. configure terminalipv4 access-list LDP-SESSION-PROTECTION permit ipv4 172.31.255.0 0.0.0.255 anypermit ipv4 10.0.0.0 0.0.255.255 any!mpls ldp session protection for LDP-SESSION-PROTECTION duration 3600 end

Answer: D

NEW QUESTION 6

Drag and drop the NAT64 descriptions from the left onto the correct NAT64 types on the right.

It is limited on the number of endpoints.

It uses address overloading.

It conserves IPv4 addresses.

It mandates IPv4-translatable IPv6 address allocation.

It has 1:N translation.

Stateful

Stateless

- A. Mastered
- B. Not Mastered

Answer: A

Explanation:

Stateful (It has 1: N translation, It uses address overloading, It conserves IPv4 addresses)

Stateless (It is limited on the number of endpoints, It mandates IPv4-translatable IPv6 address allocation)

NEW QUESTION 7

Refer to the exhibit.

```
snmp-server view ViewDefault iso included
snmp-server group GrpMonitoring v3 priv read ViewDefault
```

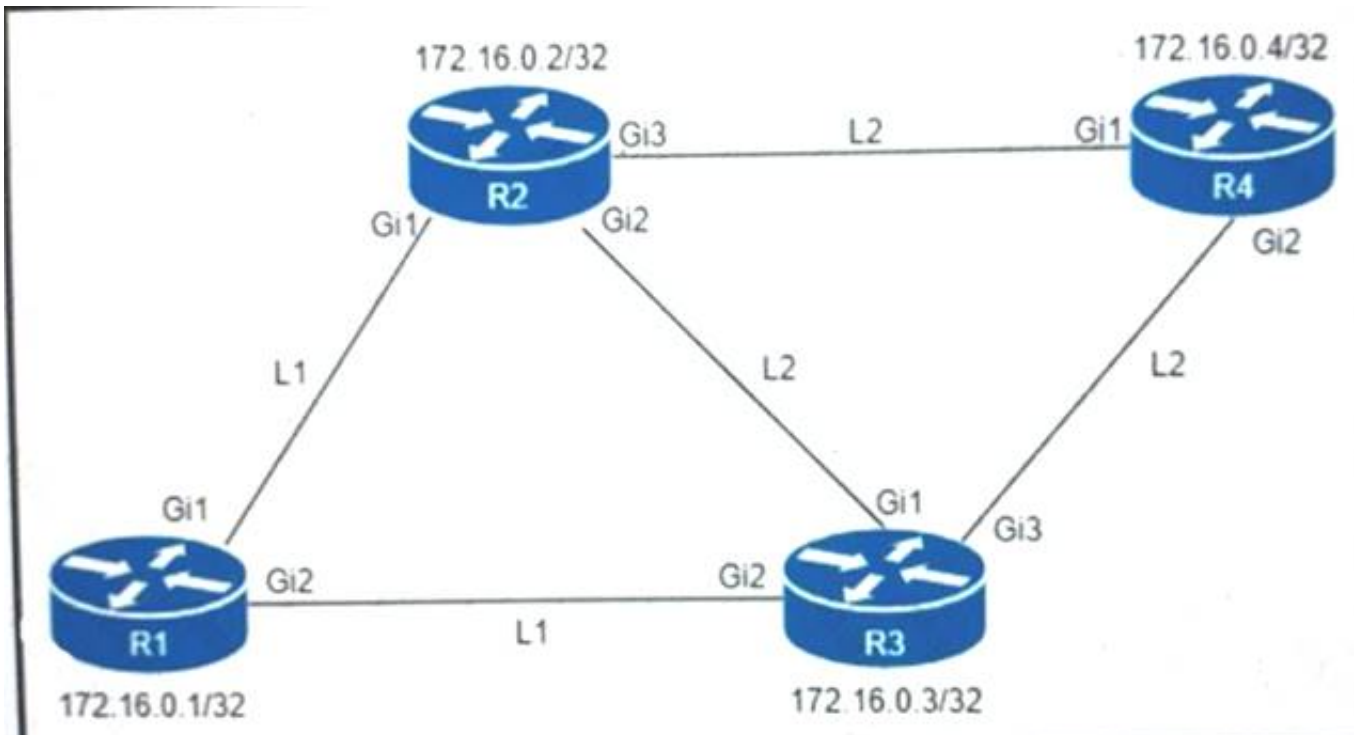
A network engineer must implement SNMPv3 on a Cisco IOS XR router running BGP. The engineer configures SNMPv3 to use SHA for authentication and AES for privacy on the routers, which are in a different data center in the same exchange as other routers. The engineer must also verify the associated MIB view family name, storage type, and status. Which set of actions meets these requirements?

- A. Add configuration snmp-server user UserJustMe GrpMonitoring v3 auth sha AuthPass1 priv 3des 128 PrivPass2 and use show snmp interface to verify the configuration.
- B. Add configuration snmp-server user AuthUser group2 remote 10.1.1.1 v3 auth sha and use show snmp mib to verify the configuration.
- C. Add configuration snmp-server user AuthUser group2 remote 10.1.1.1 v3 auth sha and use show snmp engineid to verify the configuration.
- D. Add configuration snmp-server user UserJustMe GrpMonitoring v3 auth sha AuthPass1 priv aes 128 PrivPass2 and use show snmp view to verify the configuration.

Answer: C

NEW QUESTION 8

Refer to the exhibit.



An engineer must configure router R2 as the new P router in the network. Which configuration must be applied to R2 to enable LDP-IGP Sync on its L2 IS-IS adjacencies?

- ☐ config t
router isis 1
mpls ldp igp sync
interface GigabitEthernet1
mpls ldp igp sync delay 5
- ☐ config t
interface range GigabitEthernet 1-3
mpls ldp igp sync delay 5
- ☐ config t
router isis 1
mpls ldp sync
- ☒ config t
router isis 1
mpls ldp sync
interface GigabitEthernet1
no mpls ldp igp sync

- A. Option A
- B. Option B
- C. Option C
- D. Option D

Answer: D

NEW QUESTION 9

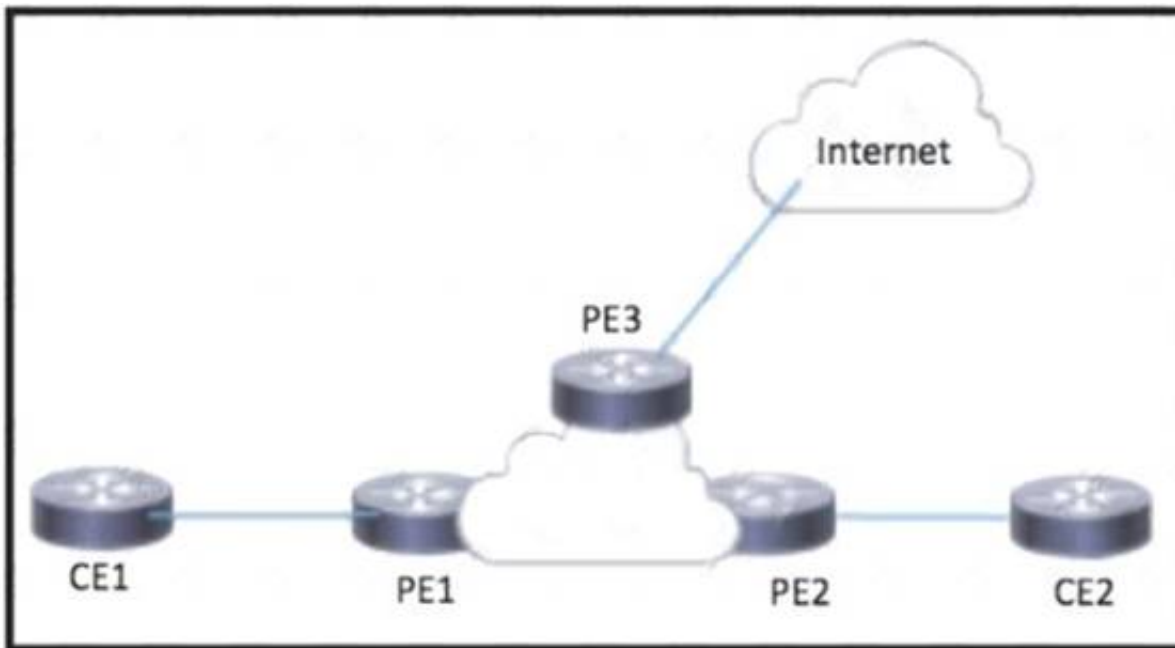
The network team is planning to implement IPv6 on the company's existing IPv4 network infrastructure. The network currently uses IS-IS to share routes between peers. Which task must the team perform so that IS-IS will run in multitopology mode on the updated IPv6 network?

- A. Configure the links between the network routers as point-to-point.
- B. Configure the network routers to use metric-style wide.
- C. Configure the network routers as Level 2 routers.
- D. Configure the IS-IS IPv6 metric on the dual-stack links.

Answer: D

NEW QUESTION 10

Refer to the exhibit.



CE1 and CE2 require connectivity to the internet through the ISP connected to PE3 What should an engineer configure to complete this task?

- A. PE2 must be configured to serve as a route reflector for PE3 routes learned from the internet
- B. PE2 then shares the routes with CE1 and CE2.
- C. CE1 and CE2 must be configured with a route distinguisher in the PE1 VRF that dynamically imports the route from the internet.
- D. CE1 and CE2 must be configured to use a static default route with a next-hop of PE3 to reach internet routes.
- E. PE1 must be configured with an import route target in the CE1 VRF that matches the export route target for the internet VRF on PE3.

Answer: D

NEW QUESTION 10

Refer to the exhibit.



A network engineer with an employee ID 4379:43:595 is setting up an IS-IS network with these requirements:

- Routes with a tag of 80 and IP prefixes other than 192.168.10.20/24 must be redistributed from Level 1 into Level 2.
- Route leaking must be configured from Level 2 into the Level 1 domain for routes that are tagged with only 50 or 40.

Which configuration must be implemented on RB to meet the requirements?

- A. Add match tag 80 in route-map leak2-1
- B. DUMPS Add match ip address 152 in route-map redist1-2
- C. Remove match tag 40 from route-map leak2-1
- D. Change match tag 80 to match tag 50 in route-map redist1-2.

Answer: D

NEW QUESTION 15

Refer to the exhibit.

```

RP/0/0/CPU0:R2#debug isis adjacencies
RP/0/0/CPU0:Apr 2 20:57:00.421 : isis[1010]: RECV P2P IIH (L2)
from GigabitEthernet0/0/0/0 SNPA fa16.3ebe.a7bc: System ID R2,
Holdtime 30, length 1429
RP/0/0/CPU0:Apr 2 20:57:01.761 : isis[1010]: SEND P2P IIH (L1)
on GigabitEthernet0/0/0/0: Holdtime 30s, Length 41

```

A network operator is attempting to configure an IS-IS adjacency between two routers, but the adjacency cannot be established. To troubleshoot the problem, the operator collects this debugging output. Which interface are misconfigured on these routers?

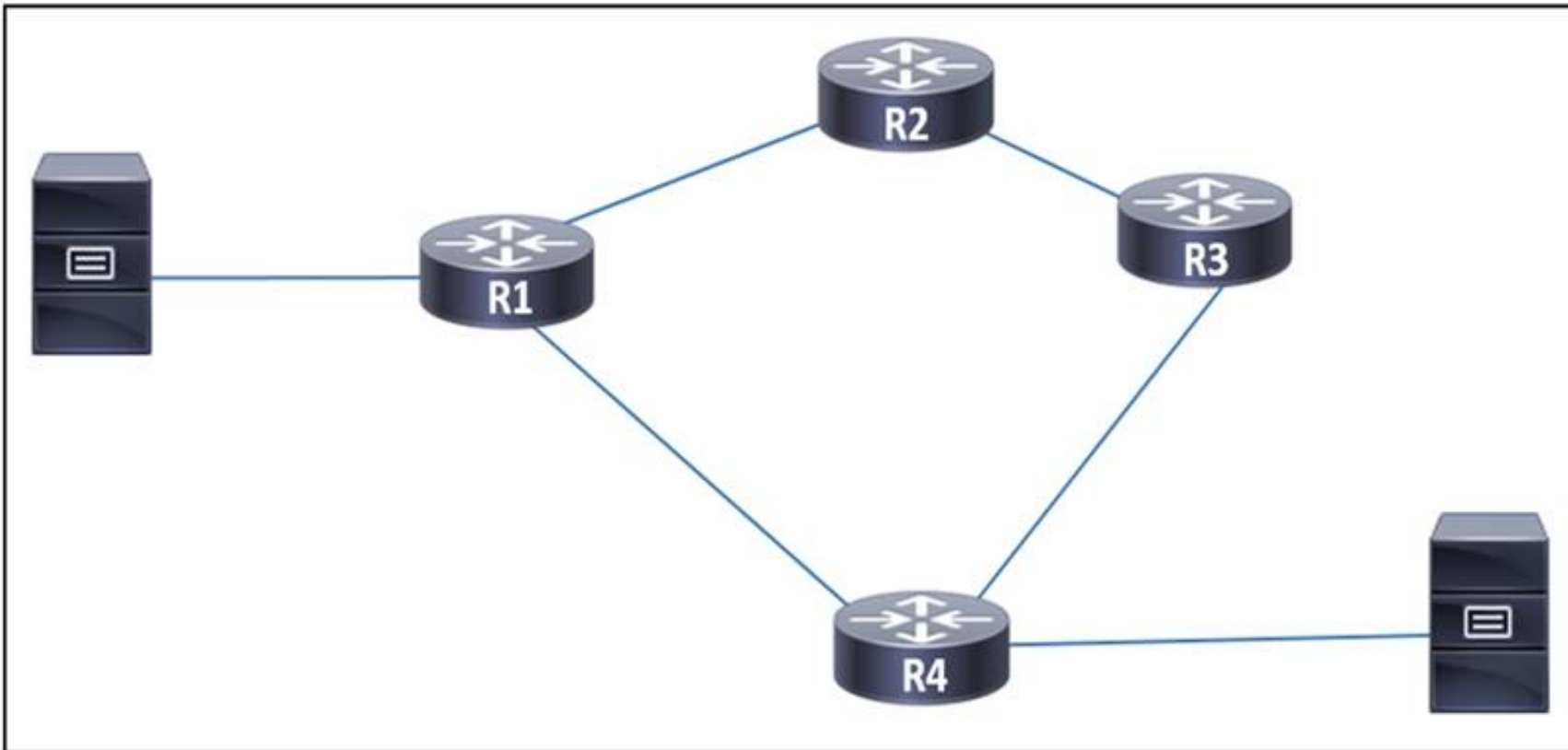
- ☒ The peer router interface is configured as Level 1 only, and the R2 interface is configured as Level 2 only.
- ☐ The R2 interface is configured as Level 1 only, and the peer router interface is configured as Level 2 only.
- ☐ The R2 interface is configured as point-to-point, and the peer router interface is configured as multipoint.
- ☐ The peer router interface is configured as point-to-point, and the R2 interface is configured as multipoint.

- A. Option A
- B. Option B
- C. Option C
- D. Option D

Answer: B

NEW QUESTION 17

Refer to the exhibit.



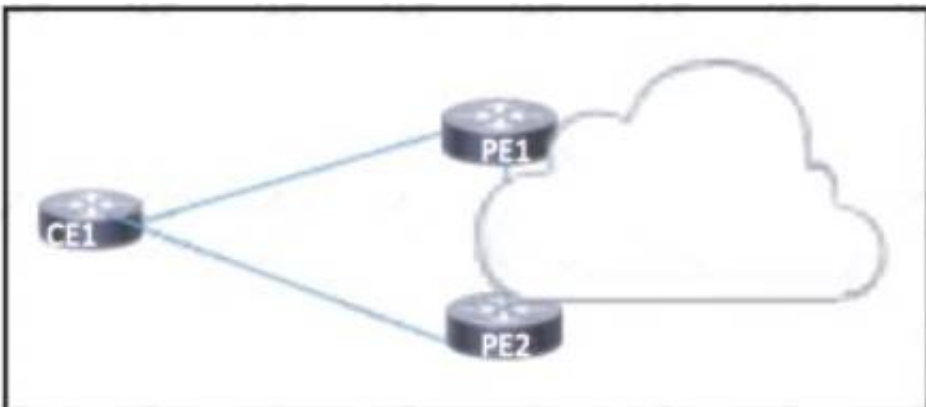
A network engineer observed congestion between routers R1 and R4, which are connected on a point-to-point link. Two servers that reside on networks on R1 and R4 generate heavy traffic between them with most traffic going from R4 to R1. To improve overall performance, the engineer wants to drop inbound packets that exceed a configured threshold, without disrupting traffic that passes from R4 to R3. Which action must the engineer take to resolve the issue?

- A. Implement traffic policing to drop packets that exceed the given threshold.
- B. Implement FIFO to queue excess traffic for transmission when bandwidth is available.
- C. Implement traffic shaping to drop excess packets.
- D. Implement a service policy in the outbound direction on each interface on the link to tag traffic exiting each router.

Answer: A

NEW QUESTION 19

Refer To the exhibit.



Which BGP attribute should be manipulated to have CE1 use PE1 as the primary path to the Internet?

- A. The weight attribute should be manipulated on PE1 on outbound routes advertised to CE1.
- B. The MED should be manipulated on CE1 on inbound routes from PE1.
- C. The local preference attribute should be manipulated on PE2 on inbound routes advertised to CE1.
- D. The origin of all routes should be modified on each router on inbound and outbound routes advertised to CE1.

Answer: B

NEW QUESTION 24

Which OS uses a distributed subsystem architecture?

- A. IOS XE

- B. IOS
- C. IOS XR
- D. CatOS

Answer: C

NEW QUESTION 26

Refer to the exhibit:

snmp-server host 192.168.1.1 version 2c public

A network administrator wants to enhance the security for SNMP for this configuration. Which action can the network administrator implement?

- A. Re-configure to use SNMPv2 with MD5 authentication
- B. Add a community string to the existing entry
- C. Re-configure to use SNMPv3.
- D. Maintain the configuration but switch to an encrypted password for device access through SSH

Answer: C

NEW QUESTION 28

After you analyze your network environment, you decide to implement a full separation model for Internet access and MPLS L3VPN services For which reason do you make this decision?

- A. It enables you to choose whether to separate or centralize each individual service.
- B. It is easier to manage a system in which services are mixed
- C. It requires only one edge router
- D. It enables EGP and IGP to operate independently

Answer: D

NEW QUESTION 33

Refer to the exhibit

```
Sep 30 03:12:33: ISIS-Adj: Rec serial IIH from *HDLC* (Serial1/1), cir type L1L2
Sep 30 03:12:33: ISIS-Adj: rcvd state DOWN, old state UP, new state INIT
Sep 30 03:12:33: ISIS-Adj: Action = GOING DOWN
Sep 30 03:12:33: %CLNS-5-ADJCHANGE: ISIS: Adjacency to R1 (Serial1/1) Down, nes
Sep 30 03:12:33: ISIS-Adj: L2 adj count 0
Sep 30 03:12:33: ISIS-Adj: Sending serial IIH on Serial1/1, length 1699
Sep 30 03:12:41: ISIS-Adj: Rec serial IIH from *HDLC* (Serial1/1), cir type L1L2
Sep 30 03:12:41: ISIS-Adj: rcvd state DOWN, old state DOWN, new state INIT
Sep 30 03:12:41: ISIS-Adj: Action = GOING UP, new type = L2
Sep 30 03:12:41: ISIS-Adj: New serial adjacency
Sep 30 03:12:41: ISIS-Adj: Sending serial IIH on Serial1/1, length 1699
Sep 30 03:12:47: ISIS-Adj: Rec serial IIH from *HDLC* (Serial1/1), cir type L1L2
Sep 30 03:12:47: ISIS-Adj: rcvd state DOWN, old state INIT, new state INIT
Sep 30 03:12:47: ISIS-Adj: Action = GOING UP, new type = L2
Sep 30 03:12:47: ISIS-Adj: Sending serial IIH on Serial1/1, length 1699
Sep 30 03:12:47: ISIS-Adj: Sending serial IIH on Serial1/1, length 1699
```

Routers R1 and R2 are connected via a serial link and use the IS-IS routing protocol for route exchange After a configuration change on R2. IS-IS connectivity is interrupted A network engineer confirmed that the interfaces are in the UP state and connectivity exists between the two routers. Which two actions must the engineer perform to resolve the problem? (Choose two.)

- A. Disable padding for hello packets under the serial interface on R2 DUMPS
- B. Change the hello interface timer to 10 seconds on R1.
- C. Change the MTU to 1500 bytes on R2.
- D. Enable hello packet padding globally on R1.
- E. Change R2 to an IS-IS Level 1 router.

Answer: CE

NEW QUESTION 36

Drag and drop the LDP features from the left onto their usages on the right.

session protection	It prevents valid routes from being overwritten with new ones until labels are assigned.
IGP synchronization	It allows stale label bindings to be used for a period of time while an LDP neighbor is unreachable.
targeted-hello accept	It uses LDP Targeted hellos to protect LDP sessions.
graceful restart	It uses LDP to form neighborhood between non-directly connected routers.

- A. Mastered
 B. Not Mastered

Answer: A

Explanation:

graceful restart
IGP synchronization
session protection
targeted-hello accept

NEW QUESTION 40

Refer to the exhibit.

```

R1
ip multicast-routing
ip pim rp-candidate GigabitEthernet1/0/0

interface g1/0/0
  ip pim sparse-mode

R2
ip multicast-routing
ip pim bsr-candidate GigabitEthernet1/0/0

interface g1/0/0
  ip pim sparse-mode
  
```

An engineer configured multicast routing on client's network. What is the effect of this multicast implementation?

- A. R2 floods information about R1 throughout the multicast domain.
 B. R2 is unable to share information because the ip pim autorp listener command is missing.
 C. R1 floods information about R2 throughout the multicast domain.
 D. R2 is elected as the RP for this domain.

Answer: B

NEW QUESTION 41

Refer to the exhibit:

```

mpls traffic-eng tunnels

segment-routing mpls
connected-prefix-sid-map
address-family ipv4
 192.168.1.1/32 index 10 range 1
exit-address-family

set-attributes
address-family ipv4
sr-label-preferred
exit-address-family

interface Loopback1
ip address 192.168.1.1 255 255.255.255
ip router isis 1

int gig0/0
ip address 192.168.1.2 255.255.255.0
ip router isis 1
mpls traffic-eng tunnels
isis network point-to-point

router isis 1
net 50.0000.0000.0000.0001.00
metric-style wide
is-type level-1
segment-routing mpls
segment-routing prefix-sid-map advertise-local
mpls traffic-eng router-id Loopback1
mpls traffic-eng level-1
  
```

Which statement about this configuration is true?"

- A. It requires an explicit Cisco MPLS TE path to be configured for the tunnel to run
- B. It requires OSPF to also be running to have optimized Cisco MPLS TE tunnels
- C. It requires a dynamic Cisco MPLS TE path to be configured for the tunnel to run
- D. It is the configuration for the head-end router of a Cisco MPLS TE tunnel with segment routing

Answer: D

NEW QUESTION 46

Refer to the exhibit:

```

telemetry model-driven
subscription cisco
sensor-group-id ciscotest sample-interval 60000
commit
  
```

This configuration is being applied on an IOS XR router. Which statement about this configuration is true?

- A. It is used to set up configuration to poll network data
- B. It is used to enable gRPC
- C. It is used to create a streaming subscription with a 60-second interval
- D. It is used to create a streaming subscription with a 600-second interval

Answer: C

NEW QUESTION 50

Which statement about the Cisco MPLS TE forwarding adjacency feature is true?

- A. It enables the headend and tailend routers to establish a bidirectional tunnel
- B. It enables the tailend router to advertise routes to the headend router over the tunnel
- C. It enables the MPLS core to use EIGRP as the routing protocol
- D. It enables the Cisco MPLS TE tunnel to be advertised into the running IGP.

Answer: D

NEW QUESTION 52

Refer to me exhibit.

```

CSR1#show flowspec ipv4 detail
AFI: IPv4
Flow      :Dest:10.6.5.0/24,DPort:=80|=443
Actions   :Traffic-rate: 0 bps (bgp.1)
Statistics (packets/bytes)
Matched   :      12/696
Dropped   :      12/696
  
```

A network operator recently configured BGP FlowSpec for me internal IT network What will be inferred from the configuration deployed on me network?

- A. The policy is configured locally on CSRI and drops all traffic for TCP ports 80 and 443
- B. The policy is learned via BGP FlowSpec and drops all traffic for TCP ports 80 and 443
- C. The policy is warned via BC FlowSpec aid has active traffic
- D. The policy is configured locally on CSR1 and currently has no active traffic

Answer: A

NEW QUESTION 55

A network engineer is deploying VPLS configuration between multiple PE routers so that customer's remote offices have end-to-end LAN connectivity. Which additional configuration should the engineer perform on the PE routers to enable the virtual switch instance?

A)

```
interface Vlan 5
xconnect vfi ciscotest
```

B)

```
I2 vfi ciscotest manual
vpn id 100
neighbor 192.168.2.2 encapsulation mpls
neighbor 192.168.3.3 encapsulation mpls
```

C)

```
interface GigEthernet1/1
switchport mode trunk
switchport trunk encap dot1q
switchport trunk allow vlan 2-10
```

D)

```
interface Vlan 100
xconnect vfi ciscotest
ip address 192.168.1.1 255.255.255
```

- A. Option A
- B. Option B
- C. Option C
- D. Option D

Answer: B

Explanation:

https://www.cisco.com/c/en/us/td/docs/ios-xml/ios/mp_l2_vpns/configuration/xe-3s/mp-l2-vpns-xe-3s-book/mp

NEW QUESTION 58

A network administrator is planning a new network with a segment-routing architecture using a distributed control plane. How is routing information distributed on such a network?

- A. Each segment is signalled by an SR controller, but each segment makes its own steering decisions based on SR policy.
- B. Each segment is signalled by MPLS, and each segment makes steering decisions based on the routing policy pushed by BGP.
- C. Each segment is signalled by an SR controller that makes the steering decisions for each node.
- D. Each segment is signalled by a compatible routing protocol and each segment makes its own steering decisions based on SR policy.

Answer: D

Explanation:

<https://www.cisco.com/c/en/us/support/docs/multiprotocol-label-switching-mpls/mpls/215215-segment-routing->

NEW QUESTION 62

What does DWDM use to combine multiple optical signals?

- A. frequency
- B. IP protocols
- C. time slots
- D. wavelength

Answer: D

NEW QUESTION 66

Which statement about TLS is accurate when using RESTCONF to write configurations on network devices'?

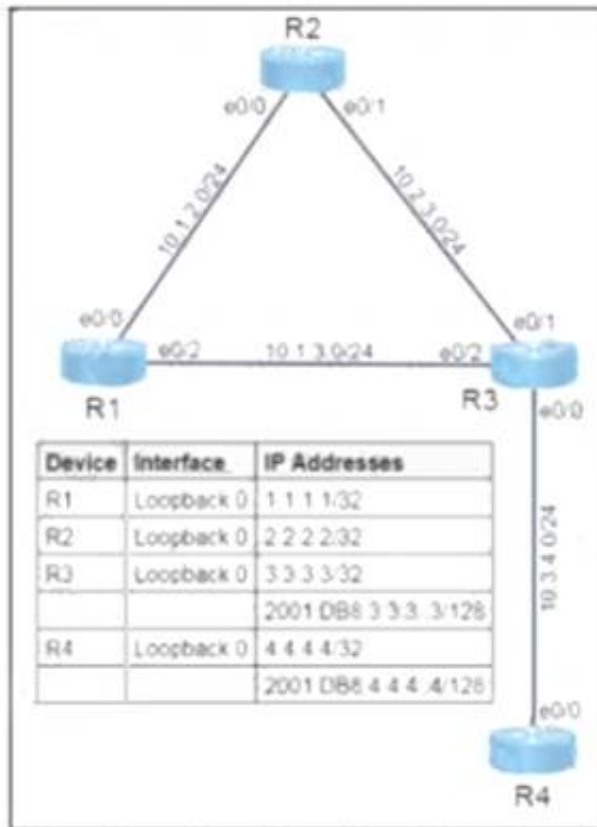
- A. It requires certificates for authentication.
- B. It is provided using NGINX acting as a proxy web server
- C. It is used for HTTP and HTTPS requests.
- D. It is not supported on Cisco devices

Answer: A

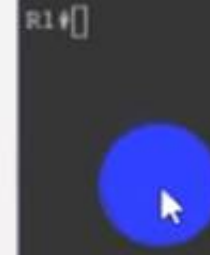
NEW QUESTION 70

Simulation 8

Guidelines Topology Tasks



R1 R2 R3 R4



Falak Sawied

Guidelines Topology Tasks

R1 and R3 have IBGP neighborship with R2. R3 and R4 have IPv4 and Pv6 EBGP neighborships with each other. Candidates are required to perform the below configuration and verification tasks.

1. Add relevant BGP configurations to R2 to ensure the IBGP neighborships are up on R2. All 7 prefixes of R1 should be learned on R3 via IBGP.
2. Modify and add relevant BGP neighborship configurations to R3 and R4 to ensure the EBGP neighborships are up. Do not use "disable-connected-check." All 7 prefixes of R1 should be learned on R4 via EBGP.
3. Ensure that both R4 and R3 have IPv6 peering, and on R4, the EBGP IPv4 neighborship/IPv6 neighborship is shut down once the number of prefixes received crosses 10.

1. Add relevant BGP configurations to R2 to ensure the IBGP neighborships are up on R2. All 7 prefixes of R1 should be learned on R3 via IBGP.
2. Modify and add relevant BGP neighborship configurations to R3 and R4 to ensure the EBGP neighborships are up. Do not use "disable-connected-check." All 7 prefixes of R1 should be learned on R4 via EBGP.
3. Ensure that both R4 and R3 have IPv6 peering, and on R4, the EBGP IPv4 neighborship/IPv6 neighborship is shut down once the number of prefixes received crosses 10.

Initial configuration with IP addressing and ISIS neighborship has been completed. The candidate must not make any changes to the configurations except to fulfill the tasks listed above.

- A. Mastered
B. Not Mastered

Answer: A

Explanation:

Solution

R3

```
router bgp 65413 add ipv4
nei 2.2.2.2 allowas-in
nei 4.4.4.4 allowas-in add ipv6
nei 2001:db8:4:4:4::4 allowas-in
end
copy run start
```

=====

R2

```
router bgp 65413
nei 1.1.1.1 as-override
nei 3.3.3.3 as-override end
copy run start
```

=====

R3

```
router bgp 65413
nei 10.3.4.2 remot 65412
nei 2001:db8:3:4::2 remot 65412
nei 2001:db8:4:4:4::4 remot 65412
nei 2001:db8:4:4:4::4 ebgp-multihop 10 add ip4
nei 10.3.4.2 act ex
add ipv6
nei 2001:db8:4:4:4::4 activate
nei 2001:db8:4:4:4::4 ebgp-multihop 10 nei 2001:db8:3:4::2 act
end
copy run start
```

=====

R4

```
router bgp 65412
nei 10.3.4.1 remot 65413
nei 2001:db8:3:3:3::3 remot 65413
nei 2001:db8:3:3:3::3 ebgp-multihop 10 nei 2001:db8:3:4::1 remot 65413
add ipv4
nei 10.3.4.1 remot act
nei 10.3.4.1 prefix-limit 10 add ipv6
nei 2001:db8:3:3:3::3 activate
nei 2001:db8:3:3:3::3 ebgp-multihop 10 nei 2001:db8:3:3:3::3 prefix-limit 10 nei 2001:db8:3:4::1 activate
nei 2001:db8:3:4::1 prefix-limit 10 end
copy run start
```

NEW QUESTION 74

Which two features describe TI-LFA? (Choose two.)

- A. TI-LFA uses PQ or P and Q nodes on the post-convergence path to compute the backup path.
- B. Post-convergence, TI-LFA considers the next-hop neighbor to calculate the backup repair path.
- C. TI-LFA works with point of local repair when the PQ node supports only LDP capability.
- D. Unlike RLFA, TI-LFA works without the PQ node and provides double segment failure protection.
- E. TI-LFA leverages the post-convergence path that carries data traffic after a failure.

Answer: DE

NEW QUESTION 75

A network administrator must monitor network usage to provide optimal performance to the network end users when the network is under heavy load. The administrator asked the engineer to install a new server to receive SNMP traps at destination 192.168.1.2. Which configuration must the engineer apply so that all traps are sent to the new server?

- A. snmp-server enable traps entity snmp-server host 192.168.1.2 public
- B. snmp-server enable traps bgpsnmp-server host 192.168.1.2 public
- C. snmp-server enable traps isdnsmmp-server host 192.168.1.2 public
- D. snmp-server enable trapssnmp-server host 192.168.1.2 public

Answer: D

NEW QUESTION 77

What are two features of stateful NAT64? (Choose two.)

- A. It uses address overloading.
- B. It provides 1:N translations, so it supports an unlimited number of endpoints.
- C. It requires IPv4-translatable IPv6 address assignments.
- D. It requires the IPv6 hosts to use either DHCPv6-based address assignments or manual address assignments.
- E. It provides 1:1 translation, so it supports a limited number of endpoints.

Answer: AB

NEW QUESTION 80

Refer for the exhibit.

```
import import
from requests. auth import HTTPBasicAuth
auth = HTTPBasicAuth('cisco_device', 'cisco_device')
headers = { 'Accept': 'application/yang-data+json', 'Content-Type': 'application/yang-data+json' }
url = "https://172.168.211.65/restconf/data/Cisco-IOS-XE-native:native/interface/GigabitEthernet=0/1"
payload = """
{
  "Cisco-IOS-XE-native:GigabitEthernet": {
    "ip": {
      "address": {
        "primary": {
          "address": "10.1.131.112",
          "mask": "255.255.255.252"
        }
      }
    }
  }
}
"""

response = requests.patch(url, verify=False)
print ("Done" + response.status)
```

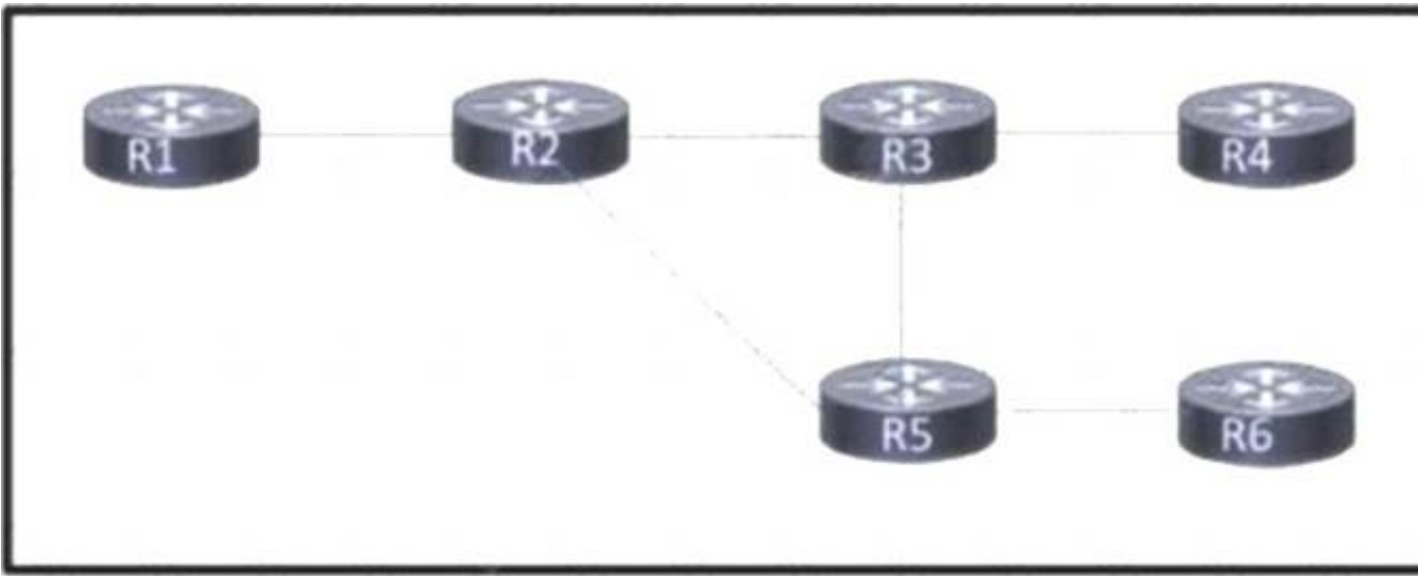
To optimize network operations, the senior architect created this Python 3.9 script for network automation tasks and to leverage Ansible 4.0 playbooks. Devices In the network support only RFC 2617-based authentication What does the script do?

- A. The script logs in via SSH and configures interface GigabitEthernetO/1 with IP address 10.1.131.112/30.
- B. The script leverages REST API calls and configures Interface GlgabilEthemet0/1 with IP address 10.1.131.112/30.
- C. The script performs a configuration sanity check on the device with IP address 172.168.211.65 via HTTP and returns an alert If the payload field falls to match.
- D. The script parses the JSON response from the router at IP address 172 168.211.65 and checks If the interface GigaWtEthernet0/1 with IP address 10.1.131.112 exists on the router.

Answer: D

NEW QUESTION 82

Refer to the exhibit.



Customers report occasional forwarding issues from hosts connected to R6 to hosts connected to R1. A network engineer has just updated the MPLS configuration on the network, and a targeted LDP session has been established between R1 and R5. Which additional task must the engineer perform so that the team can identify the path from R6 to R1 in case the forwarding issues continue?

- A. Configure an MPLS TE from R4 to R1 that routes through R5.
- B. Implement MPLS OAM within the network.
- C. Implement MPLS VPLS within the network.
- D. Configure MPLS LDP Sync on each router.

Answer: B

NEW QUESTION 87

How does Cisco DNA Center enhance network automation?

- A. It allows network administrators to quickly deploy Cisco Layer 2 devices without requiring STP and broadcast transport.
- B. It allows network administrators to reduce inconsistencies when they deploy and validate network configurations.
- C. It allows network administrators to reduce the number of VRFs in a multi customer environment by automatically implementing a single VLAN per customer.
- D. It allows network administrators to combine voice and data networks into a single topology without manual configuration.

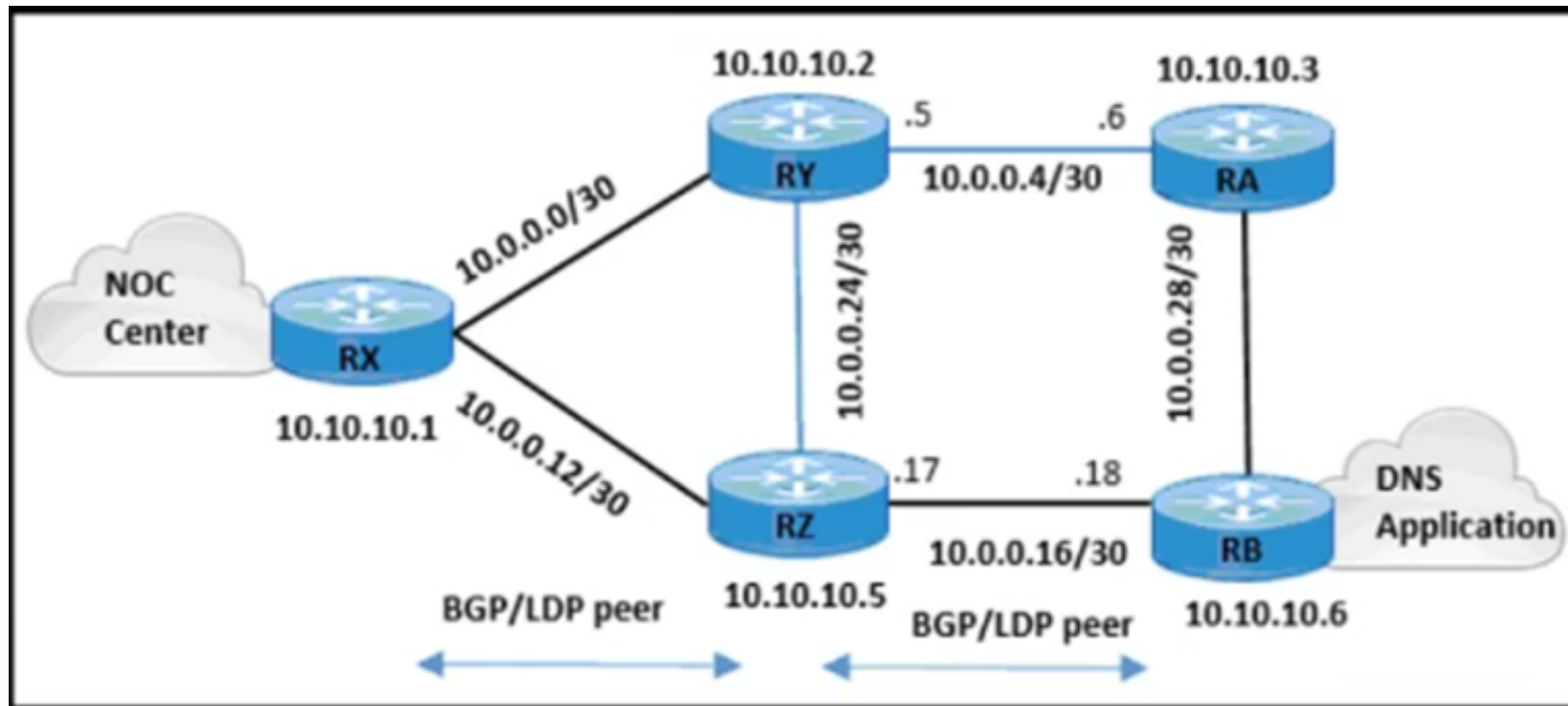
Answer: B

NEW QUESTION 89

Refer to the exhibit.

```

RX#
class-map match-all Routing
match access-group 150
class-map match-all Management
match access-group 151
!
policy-map RTR_CoPP
class Routing
police 1000000 50000 50000 conform-action transmit exceed-action transmit
class Management
police 100000 20000 20000 conform-action transmit exceed-action drop
!
access-list 150 permit tcp any gt 1024 10.0.0.0 0.0.0.255 eq bgp
access-list 150 permit tcp any eq bgp 10.0.0.0 0.0.0.255 gt 1024 established
access-list 151 permit tcp 192.168.10.0 0.0.0.255 10.0.1.0 0.0.0.255 eq telnet
access-list 151 permit tcp 192.168.10.0 0.0.0.255 eq telnet 10.0.1.0 0.0.0.255 established
access-list 151 permit tcp 192.168.10.0 0.0.0.255 10.0.1.0 0.0.0.255 eq 22
access-list 151 permit tcp 192.168.10.0 0.0.0.255 eq 22 10.0.1.0 0.0.0.255 established
access-list 151 permit udp 192.168.10.0 0.0.0.255 10.0.1.0 0.0.0.255 eq snmp
access-list 151 permit tcp 192.168.10.0 0.0.0.255 10.0.1.0 0.0.0.255 eq www
access-list 151 permit udp 192.168.10.0 0.0.0.255 10.0.1.0 0.0.0.255 eq 443
access-list 151 permit tcp 192.168.10.0 0.0.0.255 10.0.1.0 0.0.0.255 eq ftp
access-list 151 permit tcp 192.168.10.0 0.0.0.255 10.0.1.0 0.0.0.255 eq ftp-data
access-list 151 permit udp 192.168.10.0 0.0.0.255 10.0.1.0 0.0.0.255 eq syslog
access-list 151 permit udp 172.16.10.0 0.0.0.255 eq domain 10.0.1.0 0.0.0.255
  
```



The engineering team wants to limit control traffic on router RX with the following IP address assignments:

- Accepted traffic for router: 10.0.0.0/24
- NOC users IP allocation: 192.168.10.0/24

Which additional configuration must be applied to RX to apply the policy for MSDP?

- RX(config)#access-list 151 permit tcp any gt 1024 10.10.0.0 0.0.0.255 eq 639RX(config)#access-list 151 permit tcp any eq 639 10.10.0.0 0.0.0.255 gt 1024 established
- RX(config)#access-list 150 permit tcp any gt 1024 10.0.0.0 0.0.0.255 eq 639RX(config)#access-list 150 permit tcp any eq 639 10.0.0.0 0.0.0.255 gt 1024 established
- RX(config)#access-list 151 permit tcp any 10.0.0.0 0.0.0.255 eq 639RX(config)#access-list 151 permit udp any 10.0.0.0 0.0.0.255 eq 639
- RX(config)#access-list 150 permit tcp any 10.0.0.0 0.0.0.255 eq 639RX(config)#access-list 150 permit udp any 10.0.0.0 0.0.0.255 eq 639

Answer: B

NEW QUESTION 91

What is the role of NFVI?

- domain name service
- intrusion detection
- monitor
- network address translation

Answer: C

NEW QUESTION 93

An ISP Is Implementing end-to-end fault monitoring for a customer based on the IEEE 802.3ah standard. The solution must detect when 15 or more corrupted Ethernet packets arrive within 10 ms and stop propagating traffic through the ISP backbone network or to the customer side. Which configuration must the ISP engineer apply?

- ethernet oam link-monitoring enableethernet oam link-monitor crc-errors ingress time-window 10ethernet oam link-monitor crc-errors ingress threshold high 15 ethernet oam link-monitor crc-errors egress time-window 10 ethernet oam link-monitor crc-errors egress threshold high 15 ethernet oam link-monitor high-threshold action shutdown-interface
- ethernet oam link-monitoringethernet oam link-monitor receive-crc window 15 ethernet oam link-monitor receive-crc threshold high 10ethernet oam link-monitor high-threshold action disable-interface
- ethernet oamethernet oam link-monitor receive-crc window 10 ethernet oam link-monitor receive-crc threshold high 15 ethernet oam link-monitor transmit-crc window 10 ethernet oam link-monitor transmit-crc threshold high 15ethernet oam link-monitor high-threshold action errordisable-interface
- ethernet oam link-monitoring global enableethernet oam link-monitor receive crc-errors period 15 ethernet oam link-monitor receive crc-errors limit 15 ethernet oam link-monitor transmit crc-errors period 10 ethernet oam link-monitor transmit crc-errors limit 15 ethernet oam link-monitor limit action error-disable interface

Answer: C

NEW QUESTION 95

Refer to the exhibit.

Router 1:

```
snmp-server group group1 v3 noauth
snmp-server user testuser group1 remote 192.168.0.254
snmp-server host 192.168.0.254 informs version 3 noauth testuser config
```

A network engineer is deploying SNMP configuration on client's routers. Encrypted authentication must be included on router 1 to provide security and protect message confidentially. Which action should the engineer perform on the routers to accomplish this task?

- snmp-server host 192.168.0.254 informs version 3 auth testuser config.
- snmp-server user testuser group 1 remote 192.168.0.254 v3 auth md5 testpassword
- snmp-server group group 1 v3 auth.
- snmp-server community public

Answer: B

NEW QUESTION 96

A network engineer is implementing a QoS policy for outbound management traffic classification and marking on a CPE device with these requirements:

- Management protocols must be marked with DSCP AF class 2 with low drop probability.
- Monitoring protocols must be marked with DSCP AF class 1 with low drop probability.
- All remaining traffic must be marked with a DSCP value of 0.

Which configuration must the engineer implement to satisfy the requirements?

A)

```
policy-map cpe-mgmt-policy
  class management
    set ip dscp af21
  class monitoring
    set ip dscp af11
  class class-default
    set ip dscp af0
end
```

B)

```
policy-map cpe-mgmt-policy
  class management
    set ip dscp af23
  class monitoring
    set ip dscp af13
  class class-default
    set ip dscp af0
end
```

C)

```
policy-map cpe-mgmt-policy
  class management
    set ip dscp af21
  class monitoring
    set ip dscp af11
  class class-default
    set ip dscp default
end
```

D)

```
policy-map cpe-mgmt-policy
  class management
    set ip dscp af23
  class monitoring
    set ip dscp af13
  class class-default
    set ip dscp default
end
```

- A. Option A
B. Option B
C. Option C
D. Option D

Answer: C

Explanation:

https://www.cisco.com/c/en/us/td/docs/switches/datacenter/nexus1000/sw/4_0/qos/configuration/guide/nexus10

NEW QUESTION 98

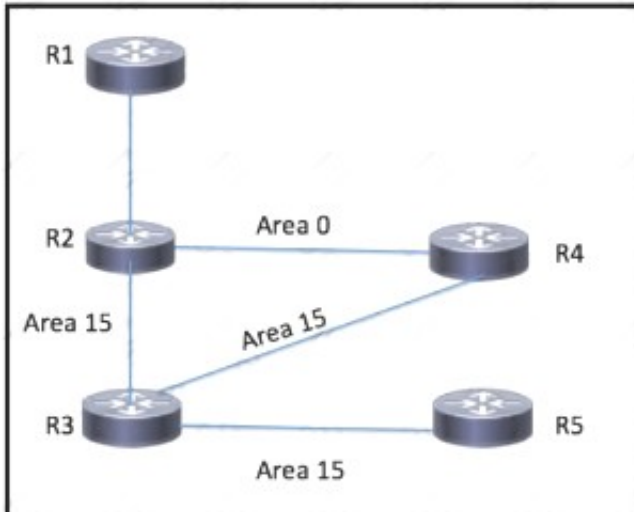
What do Chef and Puppet have in common?

- A. use Ruby
- B. use a master server
- C. require modules to be created from scratch
- D. manage agents referred to as minions

Answer: B

NEW QUESTION 101

Refer to the exhibit.



An engineer has started to configure a router for OSPF, as shown Which configuration must an engineer apply on the network so that area 15 traffic from R5 to R1 will prefer the route through R4?

- A. Place the link between R3 and R5 in a stub area to force traffic to use the route through R4.
- B. Increase the cost on the link between R2 and R4, to influence the path over R3 and R4.
- C. Implement a multiarea adjacency on the link between R2 and R4, with the cost manipulated to make the path through R4 preferred.
- D. Implement a sham link on the between R3 and R2 to extend area 0 area 15.

Answer: B

NEW QUESTION 104

Refer to the exhibit:

```

R1
router bgp 65000
router-id 192.168.1.1
neighbor 192.168.1.2 remote-as 65012
neighbor 192.168.1.2 local-as 65112
  
```

A network engineer is implementing a BGP protocol. Which effect of the local-as keyword in this configuration is true?

- A. It enables peer 192.168.1.2 to establish a BGP relationship with R1 using AS 65012 and the VPNv4 address family
- B. It enables peer 192.168.1.2 to establish a BGP relationship with R1 using AS 65012 without additional configuration
- C. It enables peer 192.168.1.2 to establish a BGP relationship with R1 using AS 65112 and the VPNv4 address family
- D. It enables peer 192.168.1.2 to establish a BGP relationship with R1 using AS 65112 without additional configuration.

Answer: D

Explanation:

<https://www.cisco.com/c/en/us/support/docs/ip/border-gateway-protocol-bgp/13761-39.html>

NEW QUESTION 109

Refer to the exhibit:

```

ip flow-export destination 192.168.1.2
ip flow-export version 9

interface gigabitethernet0/1
ip flow ingress
  
```

Which information is provided for traceback analysis when this configuration is applied?

- A. BGP version
- B. packet size distribution
- C. source interface
- D. IP sub flow cache

Answer: B

NEW QUESTION 113

Refer to the exhibit.

```
R1# show ip bgp summary
Neighbor      V  AS   MsgRcvd  MsgSent  TblVer  InQ  OutQ  Up/Down  State/PfxRcd
11.11.11.11   4  5400   0         0         0     0     0    never     Active

R1
interface Loopback0
 ip address 2.2.2.2 255.255.255.255
interface Ethernet1/0
 ip address 11.11.11.11 255.255.255.0
router bgp 5400
 neighbor 11.11.11.12 remote-as 5400
 neighbor 11.11.11.12 update-source Loopback0
 ip route 1.1.1.1 255.255.255.255 11.11.11.12

R2
interface Loopback0
 ip address 1.1.1.1 255.255.255.255
interface Ethernet1/0
 ip address 11.11.11.12 255.255.255.0
router bgp 5400
 neighbor 11.11.11.11 remote-as 5400
 neighbor 11.11.11.11 update-source Loopback0
 ip route 2.2.2.2 255.255.255.255 11.11.11.11
```

Router R1 is reporting that its BGP neighbor adjacency to router R2 is down, but its state is Active as shown. Which configuration must be applied to routers R1 and R2 to fix the problem?

A)

```
R1
router bgp 5400
neighbor 2.2.2.2 remote-as 5400
```

```
R2
router bgp 5400
neighbor 1.1.1.1 remote-as 5400
```

B)

```
R1
router bgp 5400
 neighbor 11.11.11.11 remote-as 5400
 neighbor 11.11.11.11 update-source Loopback0
```

```
R2
router bgp 5400
 neighbor 11.11.11.12 remote-as 5400
 neighbor 11.11.11.12 update-source Loopback0
```

C)

```
R1
router bgp 5400
 neighbor 1.1.1.1 remote-as 5400
 neighbor 1.1.1.1 update-source Loopback0
```

```
R2
router bgp 5400
 neighbor 2.2.2.2 remote-as 5400
 neighbor 2.2.2.2 update-source Loopback0
```

D)

```
R1
router bgp 5400
 neighbor 2.2.2.2 remote-as 5400
 neighbor 2.2.2.2 update-source Loopback0
```

```
R2
router bgp 5400
 neighbor 1.1.1.1 remote-as 5400
 neighbor 1.1.1.1 update-source Loopback0
```

- A. Option A
- B. Option B
- C. Option C
- D. Option D

Answer: C

NEW QUESTION 118

Refer to the exhibit.

Router 1:	Router 2:
Interface gigabitethernet0/1	Interface gigabitethernet0/1
ip address 192.168.1.1 255.255.255.0	ip address 192.168.1.2 255.255.255.0
ip ospf hello-interval 1	ip ospf hello-interval 2
router ospf 1	router ospf 2
network 192.168.1.0 0.0.0.255 area 1	network 192.168.1.2 0.0.0.0 area 1

What reestablishes the OSPF neighbor relationship between Router 1 and Router 2?

- A. authentication is added to the configuration
- B. correct wildcard mask is used on Router 2
- C. OSPF process IDs match
- D. hello intervals match

Answer: D

NEW QUESTION 119

The NOC team must update the BGP forwarding configuration on the network with these requirements: BGP peers must establish a neighborhood with NSF capability and restart the session for the capability to be exchanged after 120 seconds.

BGP peers must delete routes after 360 seconds of inactivity. Which action meets these requirements?

- A. Set the BGP restart-time to 120 seconds and the BGP ha-mode sso to 360 seconds.
- B. Set the stalepath-time to 120 seconds and the BGP restart-time to 360 seconds.
- C. Set the BGP ha-mode sso to 120 seconds and the BGP restart-time to 360 seconds.
- D. Set the BGP restart-time to 120 seconds and the stalepath-time to 360 seconds.

Answer: D

NEW QUESTION 121

Refer to the exhibit:

<https://192.168.1.100/api/mo/uni/tn-ciscotest.xml>

What is the URL used for with REST API?

- A. It is used to contact a URL filter to determine the efficacy of a web address
- B. It is used to send a TACACS+ authentication request to a server
- C. It is used to send a message to the APIC to perform an operation on a managed object or class operator
- D. It is used to initiate an FTP session to save a running configuration of a device.

Answer: C

NEW QUESTION 123

Drag and drop the OSPF and IS-IS Cisco MPLS TE extensions from the left to their functional descriptions on the right.

TLV Type 2	includes an 8-bit default metric
TLV Type 22	supports a 32-bit metric and an up/down bit
TLV Type 134	carries a 32-bit router ID for traffic engineering
TLV Type 135	advertisements are flooded throughout the entire area network
Type 10 Opaque LSA	contains information about the link and includes other sub-TLVs

- A. Mastered
- B. Not Mastered

Answer: A

Explanation:



NEW QUESTION 128

A network engineer is adding 10Gbps link to an existing 2X1Gbps LACP-based LAG to augment its capacity. Network standards require a bundle interface to be take out of service if one of its member links does down, and the new link must be added with minimal impact to the production network. Drag and drop the tasks that the engineer must perform from the left into the sequence on the right. Not all options are used.



- A. Mastered
- B. Not Mastered

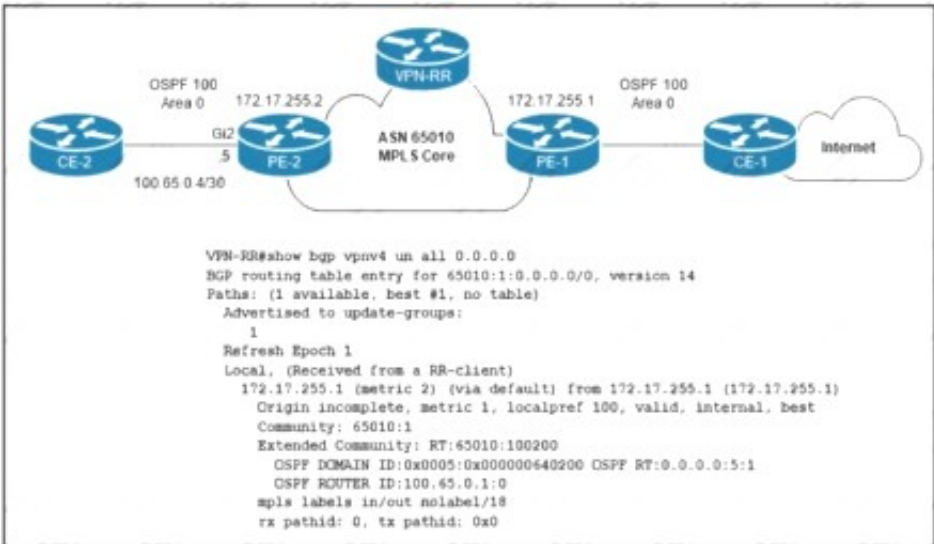
Answer: A

Explanation:

Application, table Description automatically generated with medium confidence

NEW QUESTION 133

Refer to the exhibit.



The network engineer who manages ASN 65010 is provisioning a customer VRF named CUSTOMER-ABC on PE-2. The PE-CE routing protocol is OSPF Internet reachability is available via the OSPF 0 0 0.0/0 route advertised by CE-1 to PE-1 In the customer VRF Which configuration must the network engineer Implement on PE-2 so that CE-2 has connectivity to the Internet?

A)

```
vrf definition CUSTOMER-ABC
rd 65010:1
address-family ipv4
route-target both 65010:1
!
router ospf 100 vrf CUSTOMER-ABC
network 100.65.0.4 0.0.0.3 area 0
redistribute bgp 65010 subnets
default-information originate
!
router bgp 65010
address-family ipv4 unicast vrf CUSTOMER-ABC
redistribute ospf 100 match internal external
```

B)

```
vrf definition CUSTOMER-ABC
rd 65010:2
address-family ipv4
route-target both 65010:100200
!
router ospf 100 vrf CUSTOMER-ABC
network 100.65.0.4 0.0.0.3 area 0
redistribute bgp 65010 subnets
!
router bgp 65010
address-family ipv4 unicast vrf CUSTOMER-ABC
redistribute ospf 100 match internal external
```

C)

```
vrf definition CUSTOMER-ABC
rd 65010:1
address-family ipv4
route-target both 65010:100200
!
router ospf 100 vrf CUSTOMER-ABC
network 100.65.0.4 0.0.0.3 area 0
redistribute bgp 65010 subnets
default-information originate
!
router bgp 65010
address-family ipv4 unicast vrf CUSTOMER-ABC
redistribute ospf 100 match internal external
```

D)

```
vrf definition CUSTOMER-ABC
rd 65010:2
address-family ipv4
route-target both 65010:1
!
router ospf 100 vrf CUSTOMER-ABC
network 100.65.0.4 0.0.0.3 area 0
redistribute bgp 65010 subnets
!
router bgp 65010
address-family ipv4 unicast vrf CUSTOMER-ABC
redistribute ospf 100 match internal external
```

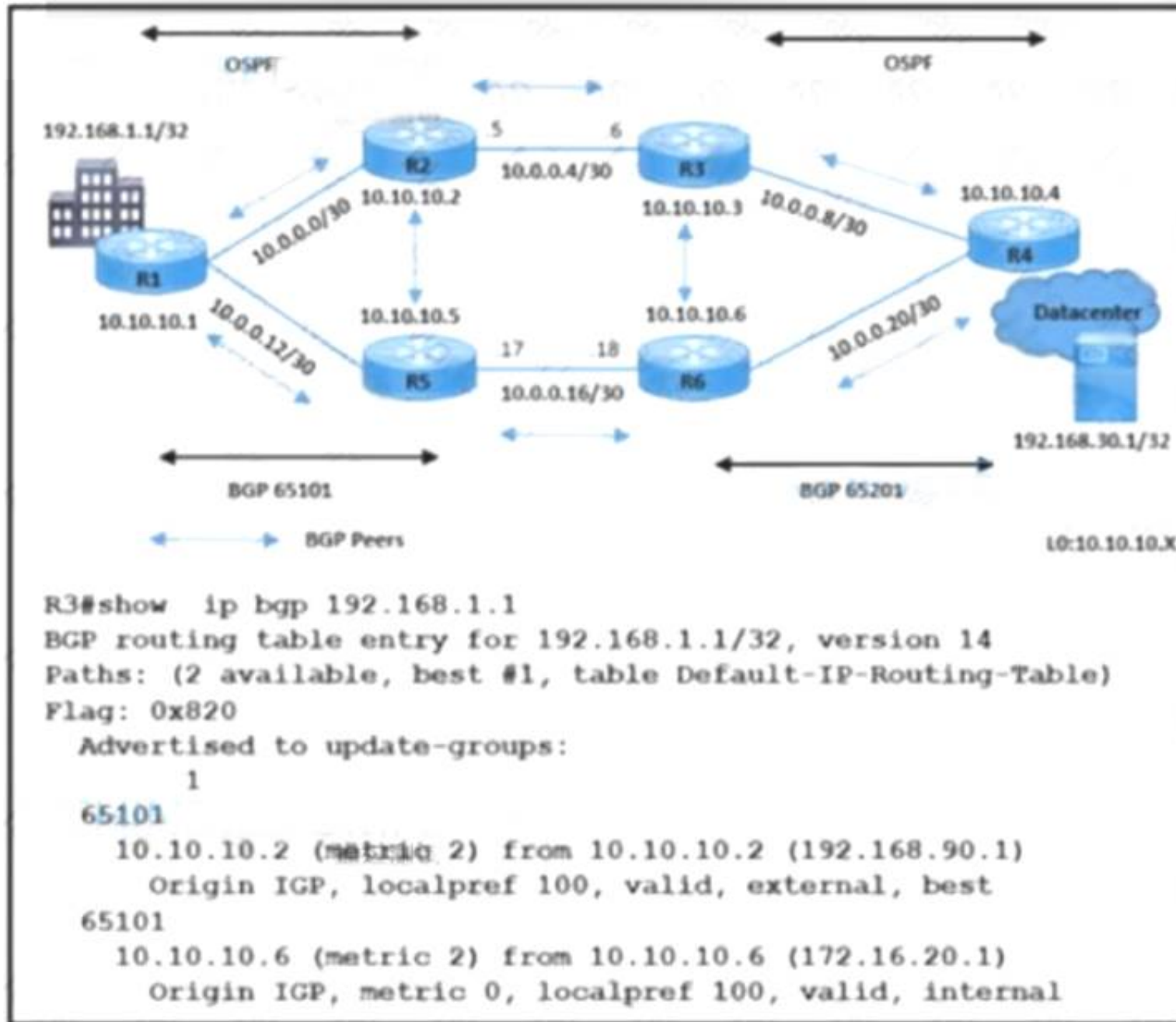
- A. Option A
- B. Option B
- C. Option C

D. Option D

Answer: C

NEW QUESTION 137

Refer to the exhibit.



A network engineer is implementing BGP in AS 65101 and AS 65201. R3 sends data traffic to 192.168.1.1 /32 via the path R3-R2-R1. The traffic must travel via alternate path R6-R5 for prefix 192.168.1.1/32. Which action must be taken to meet the requirement?

- A. Apply route-map HIGH-MED out on R2 for neighbor R3.
- B. Apply route-map HIGH-LP in on R3 for neighbor R6
- C. Apply route-map LOW-LP out on R2 for neighbor R3.
- D. Apply route-map LOW-MED in on R5 for neighbor R2

Answer: A

NEW QUESTION 139

Refer to the exhibit.

```

router ospf 1
segment-routing mpls
segment-routing forwarding mpls
  
```

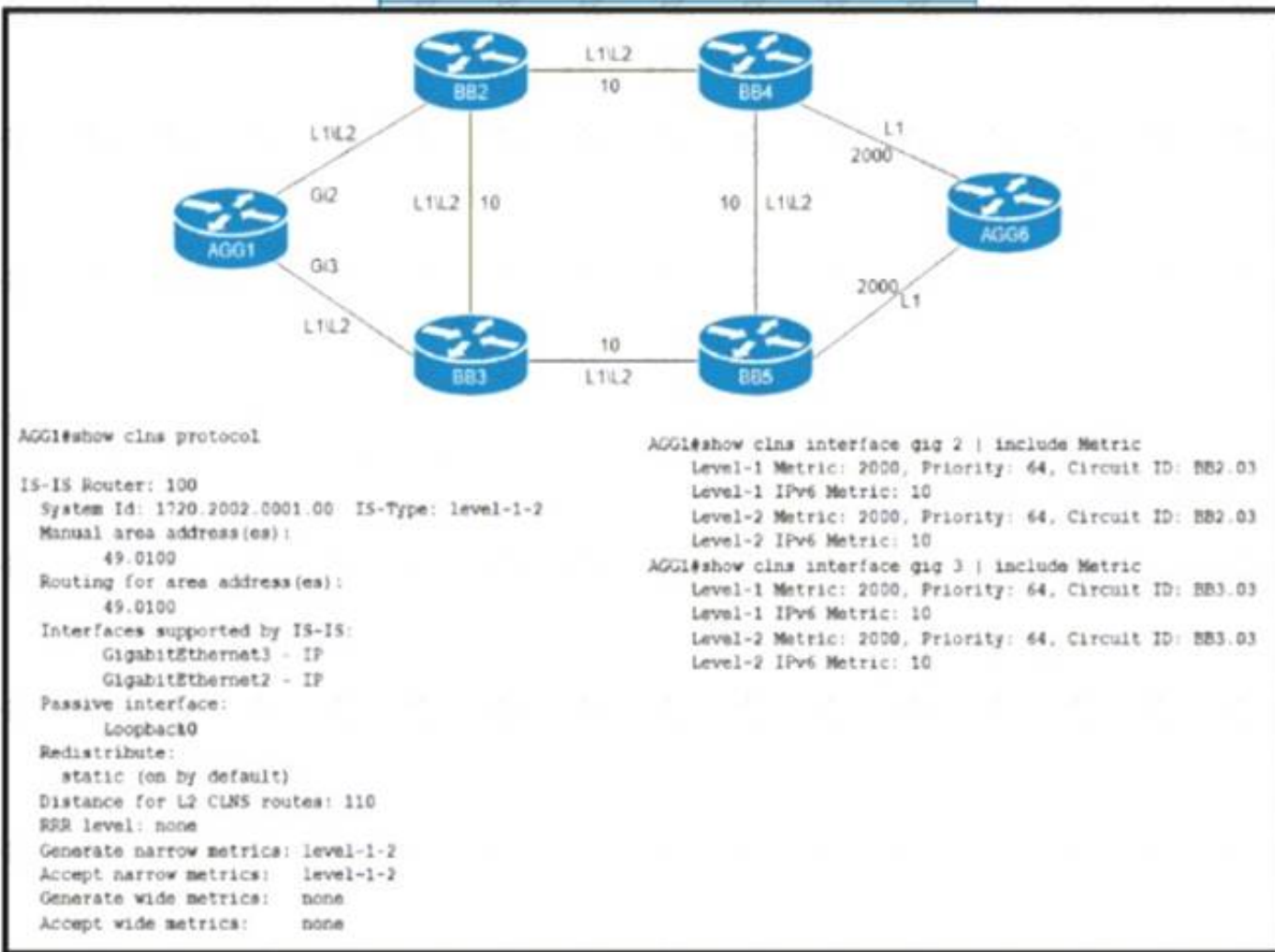
AN engineer is configuring segment routing on an ISP to simplify traffic engineering and management across network domains. What should the engineer do to complete the implementation of segment routing?

- A. OSPF must be configured with wide area metrics to support routing.
- B. The segment will run without any further configuration.
- C. Area authentication must be enable before segment routing will run.
- D. Area Authentication must be enable before segment routing will run.

Answer: C

NEW QUESTION 141

Refer to the exhibit.



An engineer is configuring IS-IS on ISP network. Which IS-IS configuration must an engineer implement on router AGG1 so that it establishes connectivity to router AGG6 via the BB3 core router?

- A. router isis 100 metric-style narrowinterface GigabitEthernet 3 isis metric 10 level-2
- B. router isis 100 metric-style wideinterface GigabitEthernet 3 isis metric 1500 level-2
- C. router isis 100 metric-style narrowinterface GigabitEthernet 3 isis metric 10 level-1
- D. router isis 100 metric-style wideinterface GigabitEthernet 3 isis metric 1500 level-1

Answer: C

NEW QUESTION 144

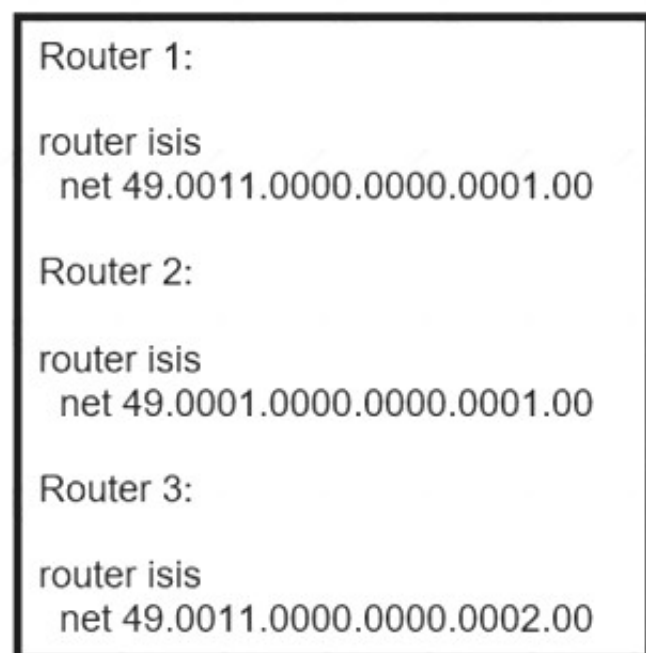
While implementing TTL security, you issue the PE(config-router-af)#neighbor 2.2.2.2 ttl-security hops 2 command. After you issue this command, which BGP packets does the PE accept?

- A. from 2.2.2.2, with a TTL of 253 or more
- B. from 2.2.2.2, with a TTL of less than 2
- C. to 2.2.2.2, with a TTL of less than 253
- D. to 2.2.2.2, with a TTL of 2 or more

Answer: A

NEW QUESTION 149

Refer to the exhibit.



Router 4 is added to the network and must be in the same area as router 1. Which NET should the engineer assign?

- A. 49.0001.0000.0000.0004.00
- B. 49.0111.0000.0000.0001.00
- C. 49.0011.0000.0000.0003.00
- D. 49.0011.0000.0000.0002.00

Answer: C

NEW QUESTION 152

Drag and drop the message types from the left onto the target field of the message originator on the right.

Close	Originated by PCC to a PCE
Error	
Path Computation Reply	Originated by PCE to PCC
Path Computation Request	
	Originated by either PCE or PCC

- A. Mastered
- B. Not Mastered

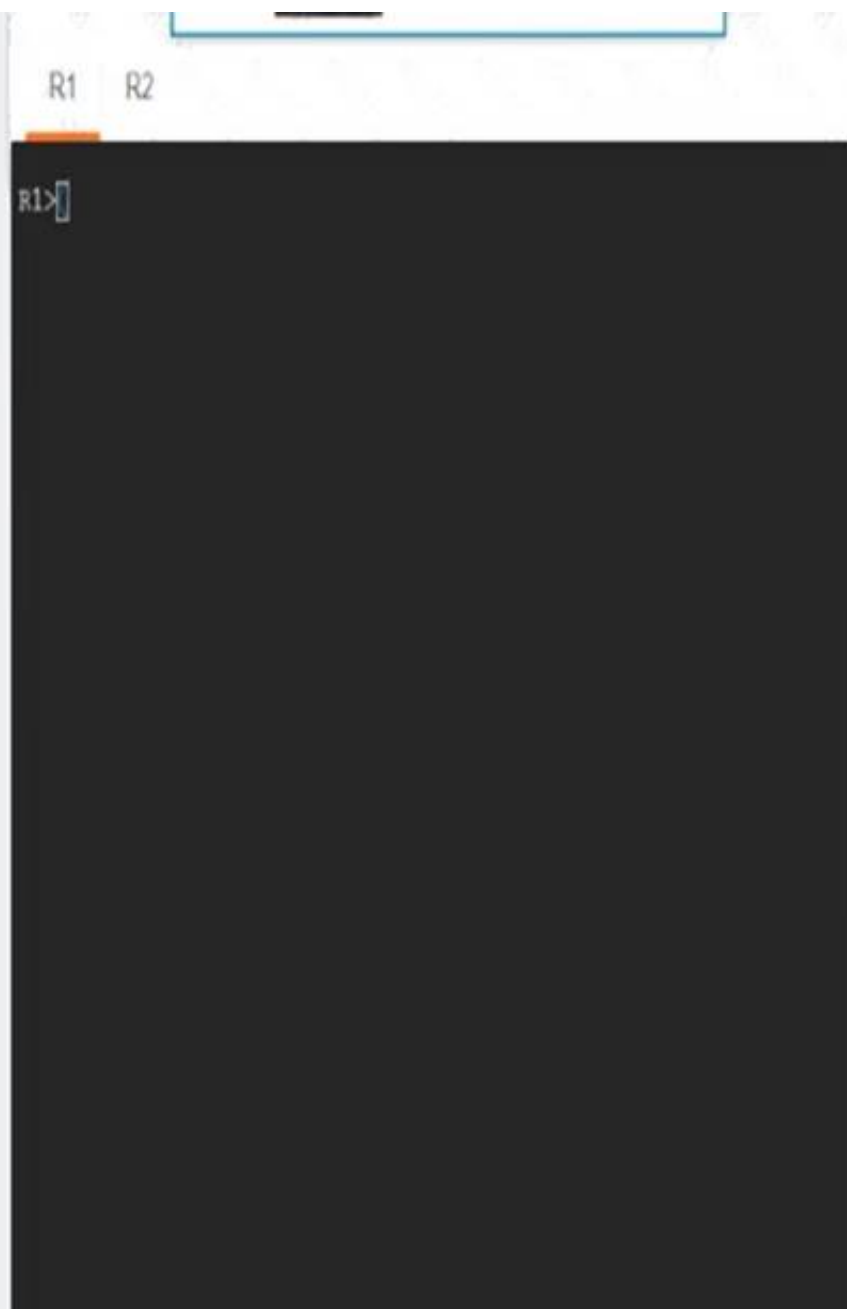
Answer: A

Explanation:

Close	Originated by PCC to a PCE
Error	Path Computation Request
Path Computation Reply	Originated by PCE to PCC
Path Computation Request	Path Computation Reply
	Originated by either PCE or PCC
	Close
	Error

NEW QUESTION 157

Simulation 6



Guidelines Topology Tasks

R1 and R2 currently have an eBGP connection. Configure and verify these tasks on R1 and R2:

1. Apply the preconfigured route map R1-TO-R2 on R1 to receive the R2 Loopback address on R1.
2. Apply the preconfigured route map R2-TO-R1 on R2 to receive the R1 Loopback address on R2.
3. R1 must advertise network 10.1.1.1/32 toward R2.
Redistribution is not allowed.
4. R2 must advertise network 10.2.2.2/32 toward R1.
Redistribution is not allowed.



- A. Mastered
- B. Not Mastered

Answer: A

Explanation:

```
R1
router bgp 100 address-family ipv4
nei 172.16.0.2 route-map R1-TO-R2 in network 10.1.1.1 mask 255.255.255.255 copy run start
R2
router bgp 200
address-family ipv4
network 10.2.2.2 mask 255.255.255.255 nei 172.16.0.1 route-map R2-TO-R1 in copy run start
```

NEW QUESTION 162

Refer to the exhibit.

```
!
telemetry model-driven
destination-group DGroup2
address family ipv4
172.10.10.10 port 57500
encoding self-describing-gpb
protocol grpc
commit
!
```

A network engineer at a large ISP is configuring telemetry streams to monitor the health status of PE routers on the network using gRPC dial-out. The PE routers are located at several data centers in different physical locations, and they are using IS-IS and BGP for routing. Which additional configuration must the engineer implement on the PE routers to meet the goal?

- A. Text, letter Description automatically generated


```
sensor-group SGroup2
sensor-path openconfig-interfaces:interfaces/interface
!
subscription Sub3
sensor-group-id SGroup3 sample-interval 30000
```
- B. Text Description automatically generated


```
sensor-group SGroup2
sensor-path Cisco-IOS-XR-plat-chas-invmgr-oper:platform-inventory/racks/rack
!
subscription Sub1
sensor-group-id SGroup1 sample-interval 30000
destination-id DGroup1
```
- C. Graphical user interface, text Description automatically generated

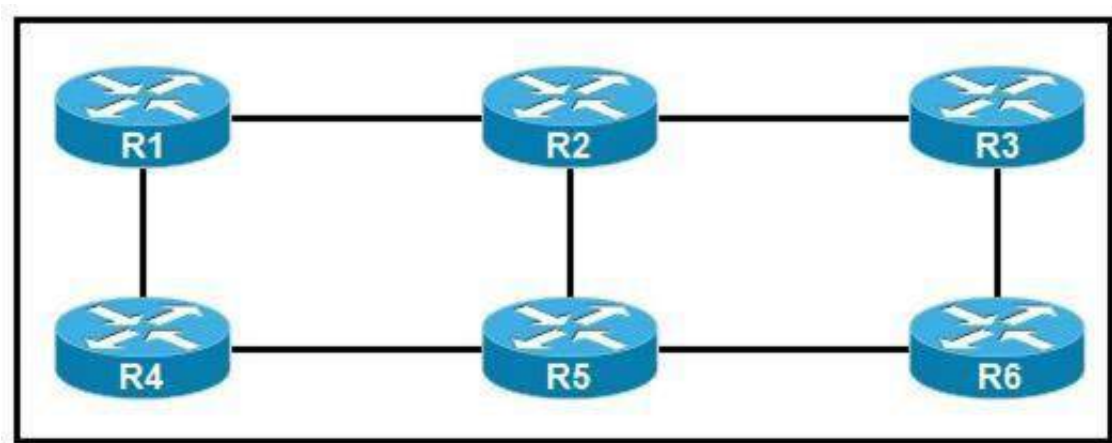

```
sensor-group SGroup2
sensor-path Cisco-IOS-XR-infra-statsd-oper:infra-statistics/interfaces/interface/latest/generic-cou
!
subscription Sub1
sensor-group-id SGroup1 sample-interval 30000
destination-id DGroup1
```
- D. Text, letter Description automatically generated


```
sensor-group SGroup2
sensor-path Cisco-IOS-XR-nto-misc-oper:memory-summary/nodes/node/summ
!
subscription Sub2
sensor-group-id SGroup2 sample-interval 30000
destination-id DGroup2
```

Answer: D

NEW QUESTION 164

Refer to the exhibit:



You are configuring an administrative domain implement so that devices can dynamically learn the RP?

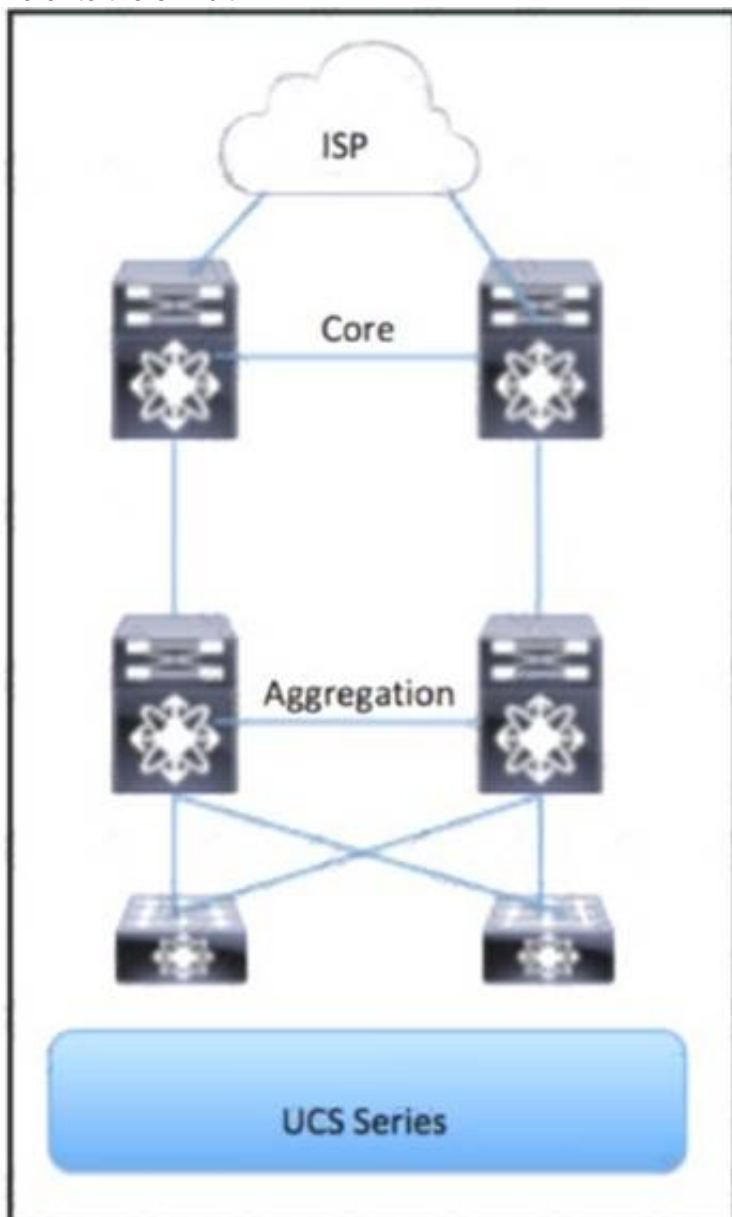
- A. SSM
- B. BID1R-PIM

- C. BSR
- D. Auto-RP

Answer: C

NEW QUESTION 166

Refer to the exhibit.



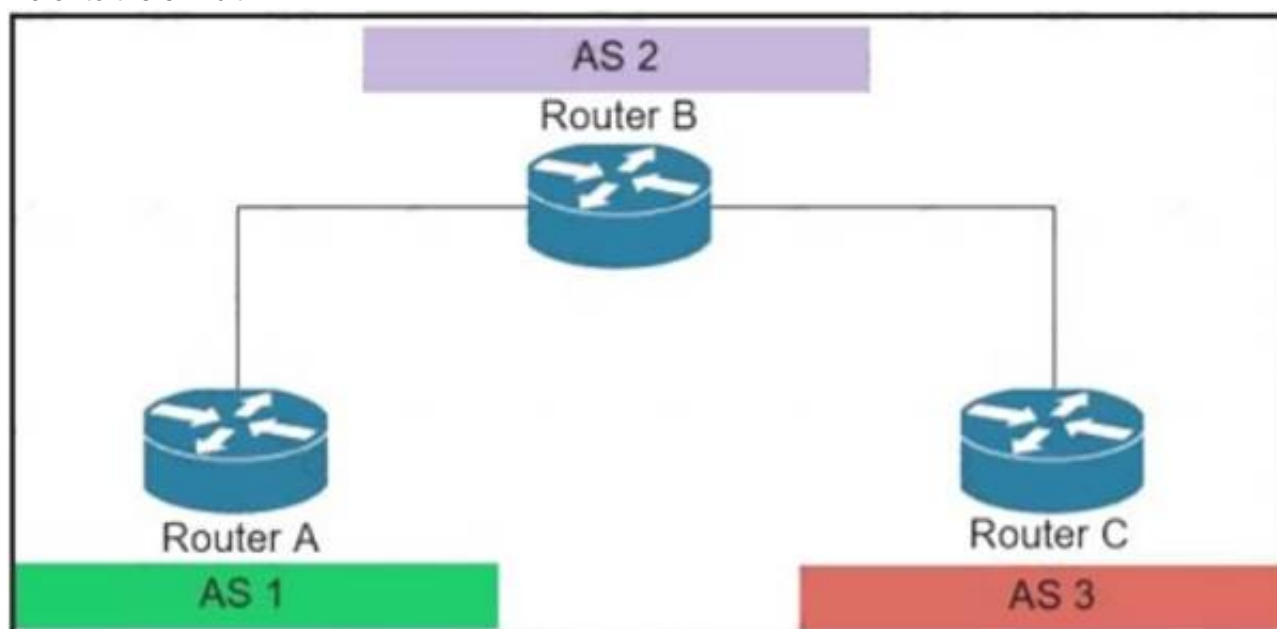
Which part of the diagram will host OpenStack components?

- A. Aggregation
- B. UCS Series
- C. Access
- D. Core

Answer: C

NEW QUESTION 168

Refer to the exhibit.



An engineer working for private Service Provider with employee id: 3948:11:613 is configuring the BGPsec framework. Which two conditions must the engineer take into account? (Choose two.)

- A. BGPsec uses IPsec tunnel for security.
- B. The BGPsec framework secures the AS path.
- C. In BGPse
- D. all route advertisements are given an expiry time by the originator of the route.
- E. Private keys are part of the router key pair used to sign route updates.
- F. In BGPse

G. route advertisements are not given an expiration time by the originator of the route.

Answer: BC

Explanation:
<https://tools.ietf.org/html/rfc8374#section-3.2>

NEW QUESTION 172

Drag and drop the functionalities from the left onto the target fields on the right.

MAP-T	Can translate RFC1918 IPv4 to Public IPv4
NAT 64	Can be Stateless or stateful
NAT 44	Provides reachability of IPv6 host over IPv4 domains
DS Lite	Provides reachability of IPv4 host over IPv6 domains
6RD	Requires IPv6 access network.

- A. Mastered
- B. Not Mastered

Answer: A

Explanation:

MAP-T	NAT 44
NAT 64	NAT 64
NAT 44	6RD
DS Lite	DS Lite
6RD	MAP-T

NEW QUESTION 174

A network engineer is configuring Flexible NetFlow and enters these commands

```
sampler NetFlow1
mode random one-out-of 100

interface fastethernet 1/0
flow-sampler NetFlow1
```

What are two results of implementing this feature instead of traditional NetFlow? (Choose two.)

- A. CPU and memory utilization are reduced.
- B. Only the flows of top 100 talkers are exported.
- C. The data export flow is more secure
- D. The number of packets to be analyzed are reduced.
- E. The accuracy of the data to be analyzed is improved.

Answer: AD

NEW QUESTION 175

Refer to the exhibit.

```
R6#
*May 26 08:03:51.815: ldp: Rcvd notif msg from 10.10.10.4:0 (pp 0x68307844)
*May 26 08:03:51.819: ldp: Rcvd notif msg from 10.10.10.4:0 (pp 0x68307844)
*May 26 08:03:51.819: ldp: Rcvd Notif msg with Status 0x80000009(E-bit set) from
10.10.10.4:0 (pp 0x68307844)
*May 26 08:03:51.823: ldp: : peer 10.10.10.4:0 down reason set as Received error
notification from peer, down_more_info set as Holddown time expired
*May 26 08:03:51.823: ldp: Rcvd Notif msg with Status 0x8000000A(E-bit set) from
10.10.10.4:0 (pp 0x68307844)
*May 26 08:03:51.827: ldp: Close LDP transport conn for adj 0x6701DB1C
*May 26 08:03:51.827: ldp: Unregistered from LDP TCB database tcb 0x66EAA6D4 [key
74], total 2
*May 26 08:03:51.831: ldp: Closing ldp conn 10.10.10.6:14171 <-> 10.10.10.4:646,
adj 0x6701DB1C
*May 26 08:03:51.839: %LDP-5-SP: 10.10.10.4:0: session recovery failed
*May 26 08:03:51.839: %LDP-5-NBRCHG: LDP Neighbor 10.10.10.4:0 (2) is DOWN
(Received error notification from peer: Holddown time expired)
```



A network engineer is implementing an LDP-based MPLS solution to enable packet flow between the two bank sites. The engineer was given two requirements:

- LDP peering must stay up when there is a link failure between R3 and R6
- LDP peering must not flap when there is a link failure between R5 and R6

Which action meets these requirements?

- A. Enable Link LDP on R4 and R6
- B. Reset the LDP session between R4 and R6
- C. Configure LDP Session Protection on R4
- D. Implement an LDP targeted session with R4 on R6

Answer: C

NEW QUESTION 179

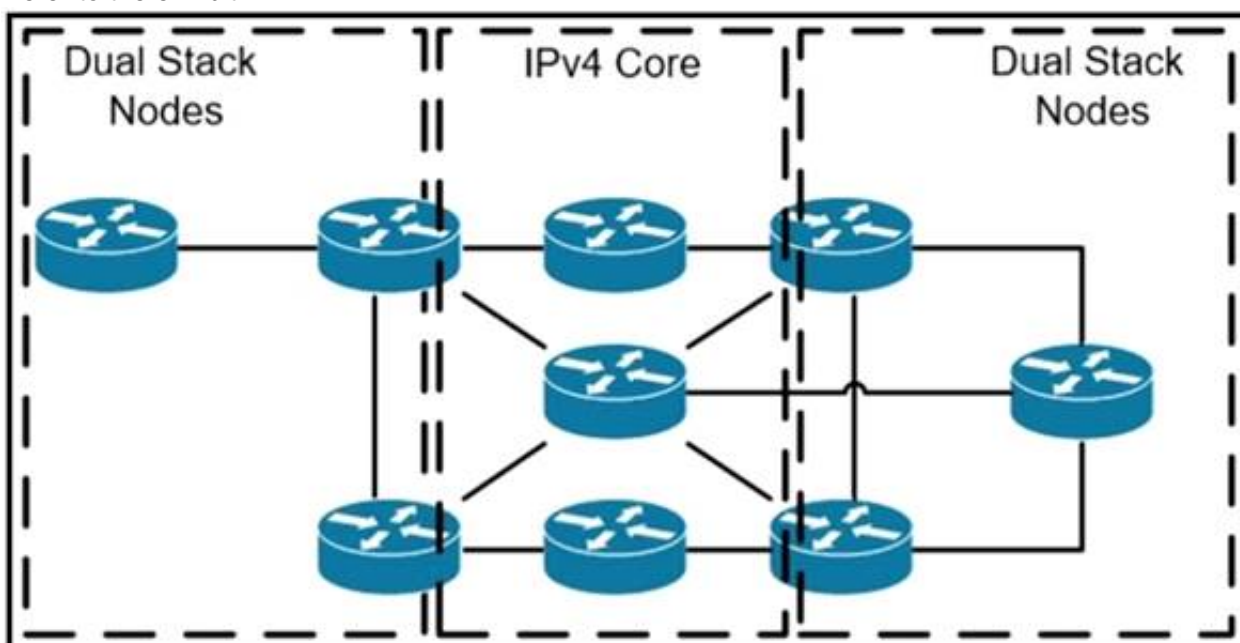
Which two features will be used when defining SR-TE explicit path hops if the devices are using IP unnumbered interfaces? (Choose two.)

- A. router ID
- B. labels
- C. node address
- D. next hop address
- E. output interface

Answer: BC

NEW QUESTION 181

Refer to the exhibit.



A network operator has two IPv4 and IPv6 dual-stacked network on each side of the IPv4 core network. The operator must be able to provide connectivity between them while using specific assigned IPv6 space provided from the company IP administrator team. Which technology should the network operator use to

accomplish this goal?

- A. 6rd
- B. NAT46
- C. DS-Lite
- D. NAT44

Answer: B

NEW QUESTION 182

Drag and drop the characteristics from the left onto the automation tool on the right.

Answer Area

It is the standard transport protocol for communicating with network devices.

It is a standard data modeling language.

It retrieves operational data.

It develops data models.

It shapes state data.

It sets and reads configuration data.

NETCONF

- A. Mastered
- B. Not Mastered

Answer: A

Explanation:

Answer Area

It is the standard transport protocol for communicating with network devices.

It is a standard data modeling language.

It retrieves operational data.

It develops data models.

It shapes state data.

It sets and reads configuration data.

NETCONF

It is a standard data modeling language.

It retrieves operational data.

It sets and reads configuration data.

NEW QUESTION 185

Refer to the exhibit.

```
R5#show run | s router ospf
router ospf 1
  router-id 172.16.0.5
  network 192.168.0.0 0.0.63.255 area 0

R5#show run int GigabitEthernet1.58
Building configuration...
Current configuration : 245 bytes
interface GigabitEthernet1.58
  description LINK TO R8 G11.58
  encapsulation dot1Q 58
  ip address 192.168.58.5 255.255.255.0
  ip mtu 1600
  ip ospf network point-to-point
  ip ospf 1 area 0.0.0.2
end
```

Which configuration must be implemented on router R8 so that it will establish OSPF adjacency with R5?

A)

```
router ospf 1
network 192.168.58.0 0.0.0.255 area 0.0.0.2
interface GigabitEthernet 1.58
ip mtu 1600
ip ospf network point-to-multipoint
```

B)

```
router ospf 1
network 192.168.58.0 0.0.0.255 area 2
interface GigabitEthernet 1.58
ip mtu 1600
```

C)

```
router ospf 1
network 192.168.58.0 0.0.0.255 area 0.0.0.2
interface GigabitEthernet 1.58
ip ospf network point-to-point
```

D)

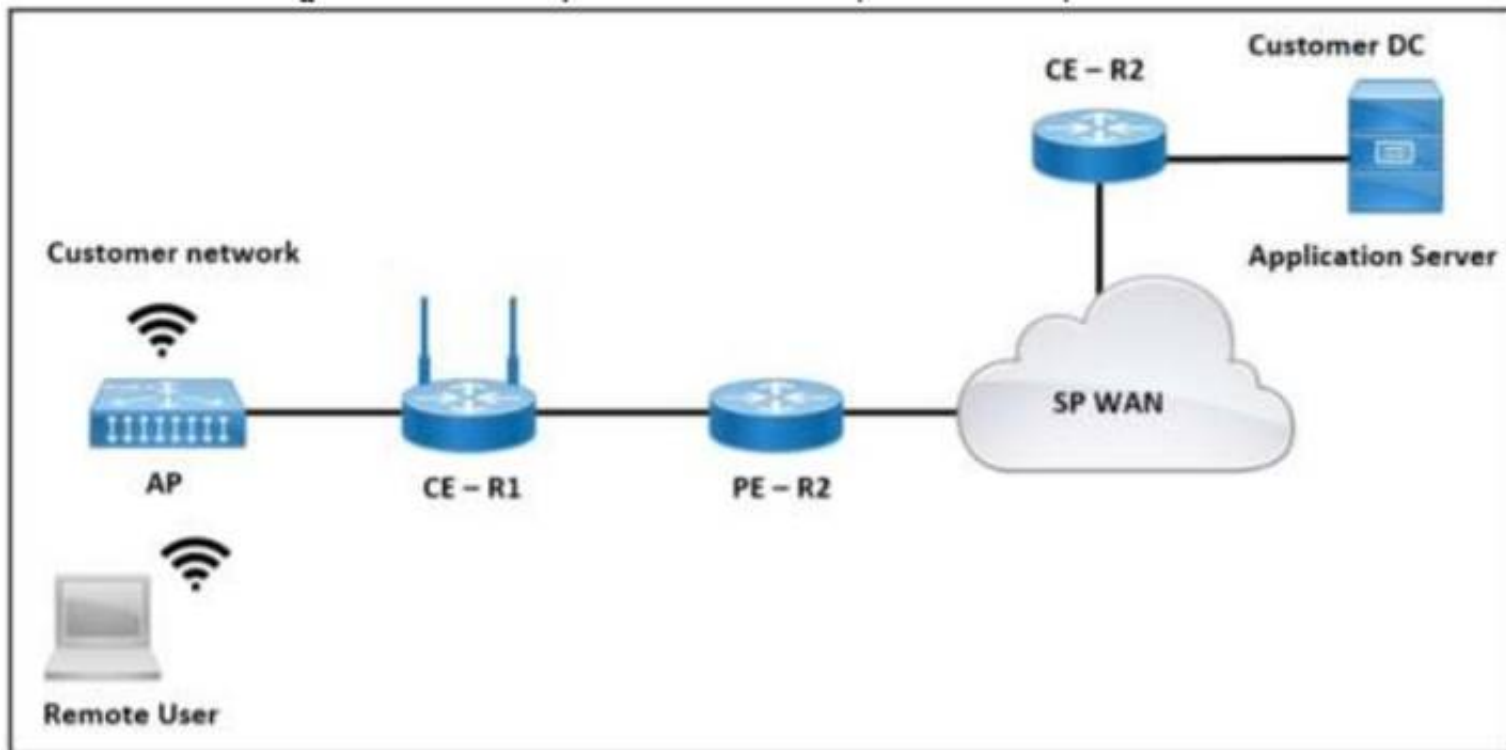
```
router ospf 1
network 192.168.58.0 0.0.0.255 area 0.0.0.2
interface GigabitEthernet 1.58
ip mtu 1600
ip ospf network point-to-point
ip ospf 1 area 0
```

- A. Option A
- B. Option B
- C. Option C
- D. Option D

Answer: A

NEW QUESTION 187

Refer to the exhibit.



The application server in the data center hosts voice, video, and data applications over the internet. The data applications run more slowly than the voice and video applications. To ensure that all applications run smoothly, the service provider decided to implement a QoS policy on router PER 2 to apply traffic shaping. Which two actions must an engineer take to implement the task? (Choose two.)

- A. Configure the scheduling function to handle delayed packets.
- B. Enable packet remarking for priority traffic.
- C. Configure a queue to buffer excess traffic.
- D. Set the token value for secondary traffic.
- E. Set a threshold to discard excess traffic.

Answer: AC

NEW QUESTION 190

The network-engineering team of a service provider is integrating several recently acquired networks into a more scalable common Unified MPLS architecture. The new network architecture will support end-to-end VPNv4 and VPNv6 services with these requirements:

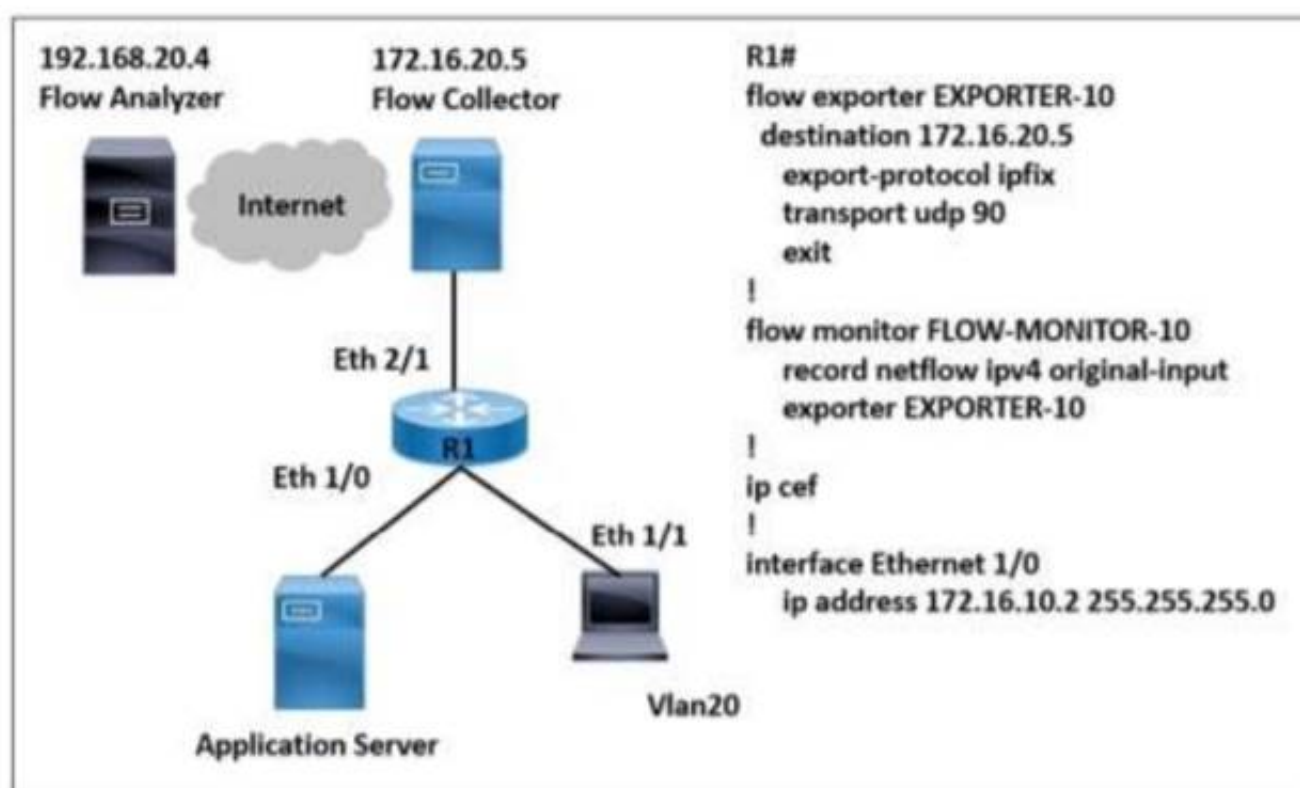
- The IGP of the core layer is IS-IS In Area 0.
 - The IGP of the aggregation layers is OSPF in Area 0.
 - The LDP protocol is used to distribute label bindings within each IGP domain.
- Which task must the network engineer perform when implementing this new architecture?

- A. Configure BGP-LU between ABR routers of each IGP domain to carry MPLS label information in NLRI.
- B. Configure a BGP session between the ABR routers of each IGP domain to exchange VPNv4 or VPNv6 prefixes
- C. Configure the ABR in each IGP domain to preserve next-hop information on all VPNv4 and VPNv6 prefixes advertised by the PE.
- D. Configure mutual redistribution of each IGP domain's loopback prefix to provide end-to-end LDP LSP

Answer: A

NEW QUESTION 195

Refer to the exhibit.



A network engineer wants to monitor traffic from the application server and send the output to the external monitoring device at 172.16.20.5. Application server traffic should pass through the R1 Eth2/1 interface for further analysis after it is monitored. Which configuration must be applied on the R1 router?

- A. Configure the FLOW-MONITOR-20 command.
- B. Configure the flow exporter EXPORTER-10 destination 192.168.20.4 command.
- C. Configure the ip flow monitor FLOW-MONITOR-10 input command on the Ethernet1/0 interface.

D. Configure the ip flow monitor FLOW-MONITOR-10 output command on the Ethernet 2/1 interface.

Answer: C

NEW QUESTION 198

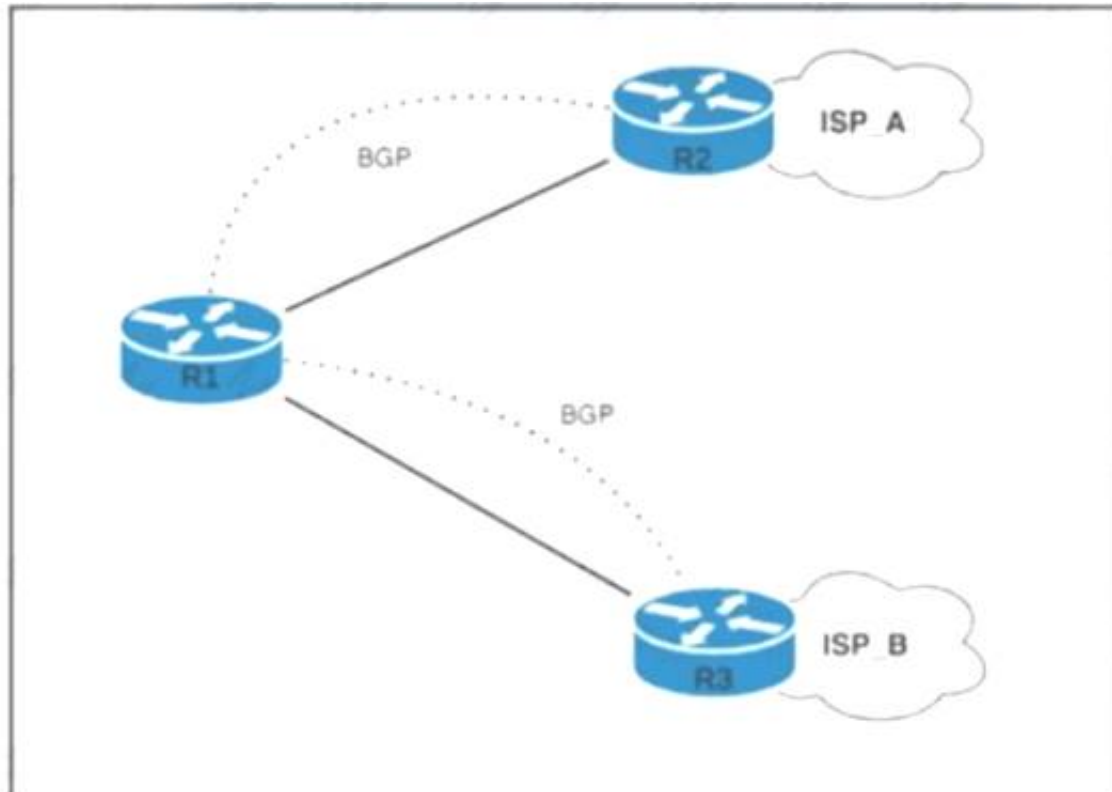
An engineer is trying to implement BGP in a multihomed architecture. What must the engineer configure to influence inbound path selection?

- A. A route map with WEIGHT attribute to control the inbound traffic.
- B. An offset list to set the metric for routes received from neighboring autonomous systems.
- C. An access list to identify traffic and enable it on both of the provider-facing interfaces.
- D. A route map with AS_PATH attribute to control the inbound traffic.

Answer: D

NEW QUESTION 199

Refer to the exhibit.



R1 has two upstream Tier 1 service providers. BGP is in use as the exterior routing protocol, and ISP_A and ISP_B are sending the full BGP table. A network engineer must assign local-preference 70 to all routes with multiple exit discriminator 30. Which configuration must the network engineer apply?

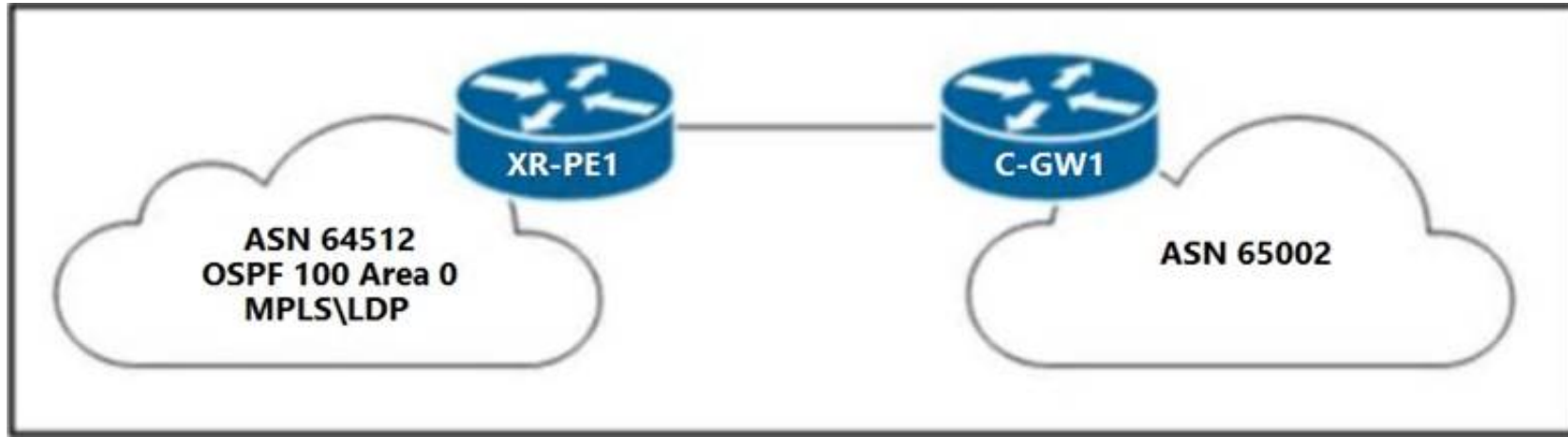
- ☐ route-policy routepolicy
if destination in (0.0.0.0/0) and (med = 30) then
set local-preference 170
else
set local-preference 70
drop
endif
end-policy
- ☐ route-policy routepolicy
if destination 0.0.0.0/0 and med 30 then
set local-preference 70
else
drop
endif
end-policy
- ☐ route-policy routepolicy
if med eq 30 then
set local-preference 70
else pass
endif
end-policy
- ☐ route-policy routepolicy
if destination in (.) and med eq 70 then
set local-preference 30
else
drop
endif
end-policy

- A. Option A
- B. Option B
- C. Option C
- D. Option D

Answer: C

NEW QUESTION 202

Refer to the exhibit.



A network engineer must configure XR-PE1 for uninterruptible failover from active RP to the standby RP. Neither peer devices CGW1 nor the network of ASN 64512 support restart extensions. Which configuration must the engineer apply to XR-PE1 to complete tasks?

- A)
- ```
router bgp 64512 nsr
router ospf 100 nsr
mpls ldp nsr
```
- B)
- ```
nsr process-failures switchover
router ospf 100 nsf cisco
```
- C)
- ```
nsr process-failures switchover
router ospf 100 nsf ietf
```
- D)
- ```
nsr process-failures switchover
router bgp 64512 nsr
router ospf 100 nsr
mpls ldp nsr
```

- A. Option A
 B. Option B
 C. Option C
 D. Option D

Answer: D

NEW QUESTION 204

A network engineer is configuring a BGP route policy for the SUBNET prefix set. Matching traffic must be dropped, and other traffic must have its MED value set to 400 and community 4:400 added to the route. Which configuration must an engineer apply?

- ☒ route-policy CISCO
- ```
if destination in SUBNET then
 drop
else
 set med 400
 set community (4:400) additive
endif
end-policy
end
```
- ☐ route-policy CISCO
- ```
if destination in SUBNET then
  drop
endif
set med 400
if community matches-any SUBNET then
  set local-preference 400
  set med 500
  set community (4:400) additive
endif
end-policy
end
```

- ☒ route-policy SUBNET
if destination in SUBNET then
drop
endif
set med 400
set local-preference 400
if community matches-any SUBNET then
set community (4:400)
endif
end-policy
end
- ☐ route-policy SUBNET
if destination in BGP then
drop
else
set med 400
set community (4:400)
endif
end-policy
end

- A. Option A
B. Option B
C. Option C
D. Option D

Answer: A

NEW QUESTION 208

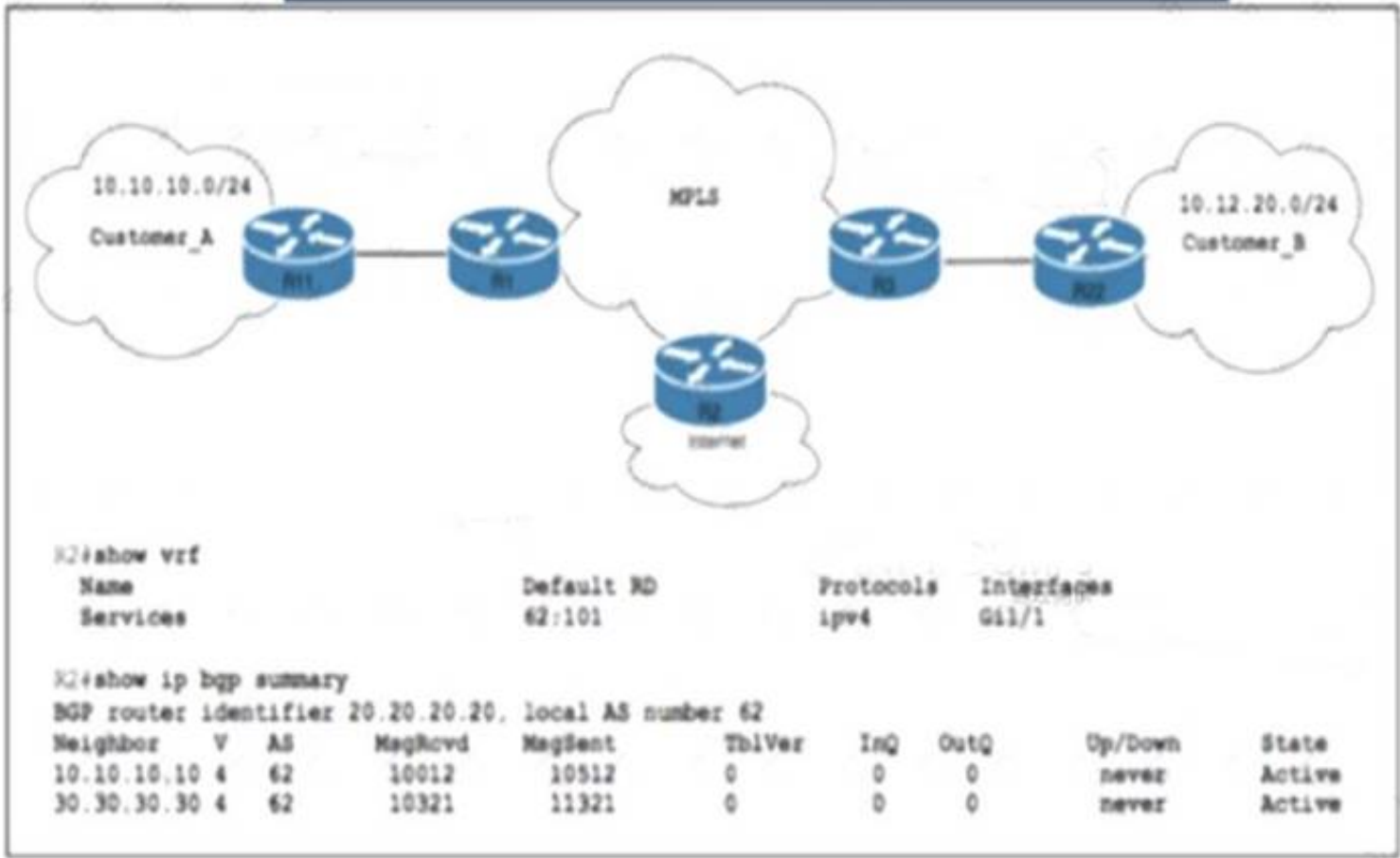
Which feature will an operator use while implementing MPLS TE on customer's network, to prevent an LSP from using any overseas inks?

- A. bandwidth
B. affinity
C. explicit path
D. SLRG

Answer: C

NEW QUESTION 210

Refer to the exhibit.



ISP_A is about to launch a new internet service. ISP_A is already providing MPLS VPN Layer 3 services to Customer_A and Customer_B, which are connected to ISP_A via OSPF. A network engineer completed the BGP and VRF configurations on R2 to support the new internet service. Which additional action completed the launch?

- A. Implement the BGP routing protocol in the customer VRFs on R1 and R2
B. Import route-target 62:101 into the customer VRFs on R1 and R3.
C. Enable the route-replicate command under the customer VRFs on R1 and R2
D. Activate NAT CE in the customer VRFs on R1, R2, and R3.

Answer: A

NEW QUESTION 212

Refer to the exhibit.

```
R1#show ip bgp
BGP table version is 3, local router ID is 50.50.50.1
Status codes: s suppressed, d damped, h history, * valid, > best, i - internal,
               r RIB-failure, S Stale
Origin codes: i - IGP, e - EGP, ? - incomplete

   Network          Next Hop          Metric LocPrf Weight Path
*> 22.22.22.22/32    50.50.50.2              0         100 500 ?
*                   40.40.40.2              0         200   0 400 ?
*                   30.30.30.2              0           0 300 300 ?
*                   20.20.20.2              0           0 200 ?

R1#show ip bgp 22.22.22.22
BGP routing table entry for 22.22.22.22/32, version 3
Paths: (4 available, best #1, table Default-IP-Routing-Table)
Flag: 0x820
  Advertised to update-groups:
    1
  500
    50.50.50.2 from 50.50.50.2 (50.50.50.2)
      Origin incomplete, metric 0, localpref 100, weight 100, valid, external, best
  400
    40.40.40.2 from 40.40.40.2 (40.40.40.2)
      Origin incomplete, metric 0, localpref 200, valid, external
  300 300
    30.30.30.2 from 30.30.30.2 (30.30.30.2)
      Origin incomplete, metric 0, localpref 100, valid, external
  200
    20.20.20.2 from 20.20.20.2 (20.20.20.2)
      Origin incomplete, metric 0, localpref 100, valid, external
```

An engineer wants to determine which paths are best, second best, third best, and fourth best. Drag and drop the peer addresses on the left to the corresponding BGP best-path selection order on the right.

20.20.20.2	Best Path
30.30.30.2	2nd Best Path
40.40.40.2	3rd Best Path
50.50.50.2	4th Best Path

- A. Mastered
B. Not Mastered

Answer: A

Explanation:

Best – 50.50.50.2
2nd Best – 40.40.40.2
3rd Best – 20.20.20.2
44th Best – 30.30.30.2

NEW QUESTION 216

Refer to the exhibit.

```
R1# show ip ospf neighbor
Neighbor ID Pri State Dead Time Address Interface
192.168.1.1 1 EXCHANGE/ - 00:00:34 192.168.1.1 fastethernet1/0

R2# show ip ospf neighbor
Neighbor ID Pri State Dead Time Address Interface
192.168.1.2 1 EXSTART/ - 00:00:32 192.168.1.2 fastethernet1/0
```

A company recently deployed a new network using OSPF in the core to share routes. The network administrator selected OSPF as the routing protocol because of its ability to maintain a route database. When the new network was started up, all routers booted normally, but the link between routers R1 and R2 failed to come up. The two routers are located in the same rack at the data center. Which task should an engineer perform to correct the problem?

- A. Synchronize the dead timers.
- B. Change one of the OSPF router IDs so that the router IDs are in different subnets
- C. Change the OSPF process ID on one of the devices so that the two IDs match
- D. Configure the MTUs on the interface to match.

Answer: D

NEW QUESTION 219

Refer to the exhibit.

```
RP/0/RP0/CPU0:XR1#sh lpts pifib hardware entry location 0/0/CPU0
-----
L4 Protocol      : ICMP
VRF ID           : any
Destination IP   : any
Source IP/BFD Disc: any
Port/Type        : Port:8
Source Port      : any
Is Fragment      : 0
Is SYN           : any
Is Bundle        : na
Is Virtual       : na
Interface        : any
Slice            : 0
V/L/T/F         : 0/IPv4_STACK/0/ICMP-local
DestNode         : Local
DestAddr         : Punt
Accepted/Dropped : 16810/14
Po/Ar/Bu         : 19/0pps/100ms
State            : pl_pifib_state_complete
-----
```

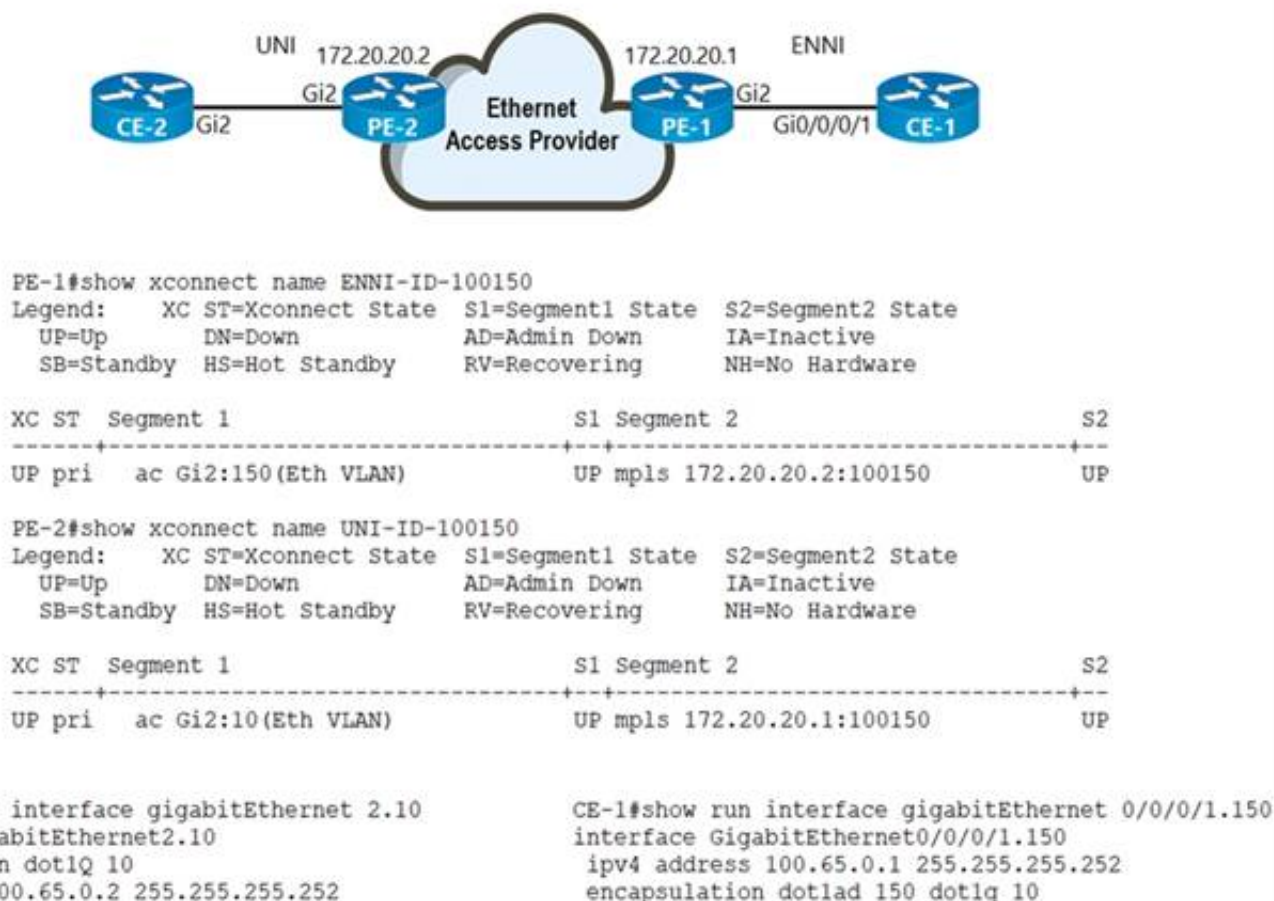
While troubleshooting the network, a network operator with an employee id: 3812:12:993 is trying to ping XR1. Which result should the operator expect when trying to ping to an XR1 local address?

- A. ICMP traffic works at a policed rate of 19 bytes per second every 100 ms
- B. All ICMP traffic responds successfully.
- C. All ICMP traffic is dropped.
- D. ICMP traffic works at a policed rate of 19 packets every 100 ms.

Answer: B

NEW QUESTION 221

Refer to the exhibit.



An Ethernet access provider is configuring routers PE-1 and PE-2 to provide E-Access EVPL service between UNI and ENNI. ENNI service multiplexing is based on 802.1ad tag 150, and service-multiplexed UNI is based on 802.1q tag 10. Which EFP configurations must the provider implement on PE-1 and PE-2 to establish end-to-end connectivity

between CE-1 and CE-2?

- A. On PE-1:interface GigabitEthernet2 service instance 100 ethernet encapsulation dot1ad 150rewrite ingress tag pop 1 symmetric On PE-2:interface GigabitEthernet2 service instance 2 ethernet encapsulation dot1q 10
- B. On PE-1:interface GigabitEthernet2 service instance 100 ethernet encapsulation dot1q 150rewrite ingress tag pop 1 symmetric On PE-2:interface GigabitEthernet2 service instance 2 ethernet encapsulation dot1q 10
- C. On PE-1:interface GigabitEthernet2 service instance 100 ethernetencapsulation dot1ad 150 dot1q 10rewrite ingress tag pop 2 symmetric On PE-2:interface GigabitEthernet2 service instance 2 ethernet encapsulation dot1q 10
- D. On PE-1:interface GigabitEthernet2 service instance 100 ethernet encapsulation dot1ad 150rewrite ingress tag pop 1 symmetric On PE-2:interface GigabitEthernet2 service instance 2 ethernet encapsulation dot1q 10rewrite ingress tag pop 1 symmetric

Answer: C

NEW QUESTION 224

An engineer Is implementing NSR with OSPF on a large campus that requires high availability. Which task must an engineer perform to complete the process with minimal disruption to traffic?

- A. Reset OSPF neighbor sessions to maintain state Information during router switchover
- B. Configure the device to repopulate state information using routing updates received from the BDR
- C. increase the keepalive interval on the OSPF neighbors so that traffic continues to pass during the switchover.
- D. Ensure that the dual RP has synchronized their state information before performing the switchover operation.

Answer: D

NEW QUESTION 228

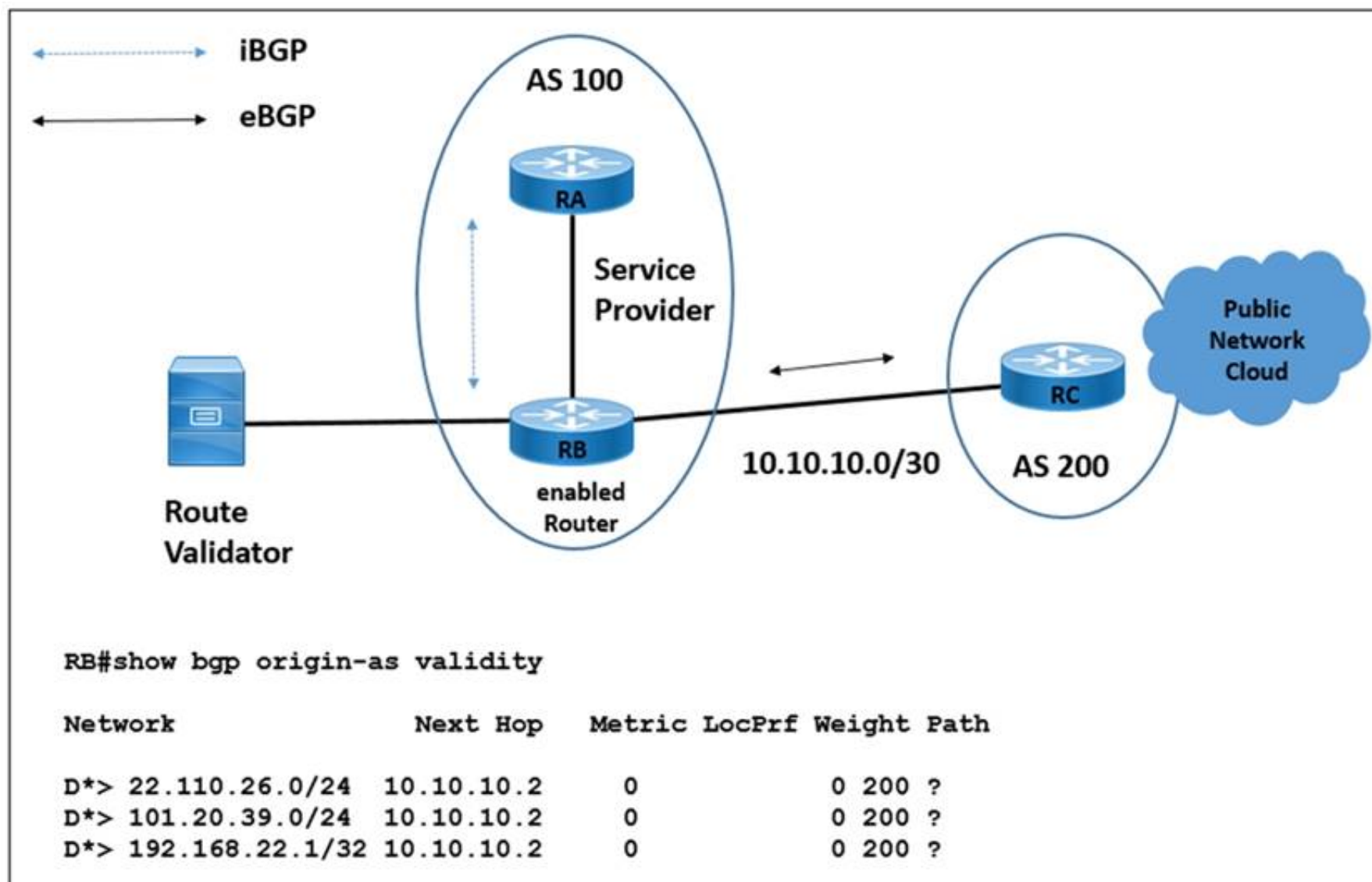
BGP has been implemented on a IOS XR router. Which configuration sends BGP IPv4 labels to build inter-domain LSPs?

- A. router bgp 65515 address-family ipv4 unicast neighbor 172.16.70.23 send-community extended
- B. router bgp 65515 no bgp default ipv4-unicast
- C. router bgp 65515 address-family ipv4 unicast neighbor 172.16.70.23 send-community
- D. router bgp 65515 neighbor 172.16.70.23 address-family ipv4 labeled-unicast

Answer: D

NEW QUESTION 233

Refer to the exhibit.



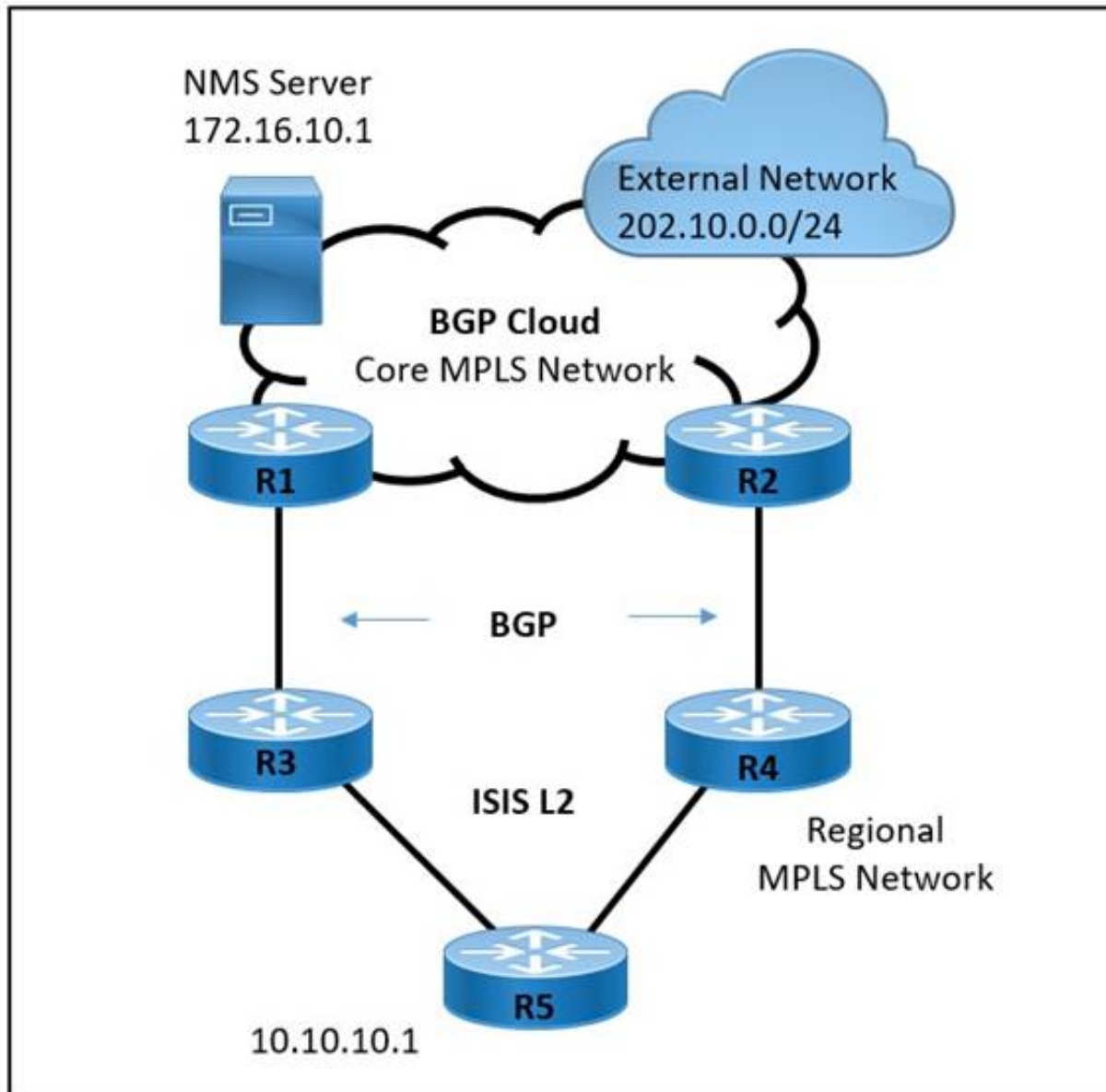
A network engineer is configuring router RB to secure BGP advertisements against route hijacking activity. RB must validate all prefixes that it receives from origin AS 200 before installing them in the BGP route table. Which configuration meets the requirement?

- A. RB(config)# router bgp 100RB(config-router)# address-family ipv4 unicast RB(config-router-af)# bgp bestpath origin-as use validity
- B. RB(config-bgp)# router bgp 100RB(config-bgp)# bgp origin-as validation signal ibgp RB(config-bgp)# bgp bestpath origin-as allow invalid
- C. RB(config-bgp)# router bgp 100RB(config-bgp)# bgp origin-as validation time off
- D. RB(config)# router bgp 100RB(config-router)# address-family ipv4 unicast PB(config-router-af)# bgp origin-as validation enable

Answer: C

NEW QUESTION 235

Refer to the exhibit.



A large service provider is migrating device management from Layer 2 VLAN-based to Layer 3 IP-based solution. An engineer must configure the ISIS solution with these requirements:

Network management server IP 172.16.10.1 must be advertised from the core MPLS network to the regional domain.

The external network 202.10.0.0/24 must not establish ISIS peering with the R5 router.

The regional network must prevent sending unnecessary hello packets and flooding the routing tables of the R5 router.

Which two ISIS parameters must be implemented to meet these requirements? (Choose two.)

- A. LSP lifetime maximum
- B. advertise-passive-only
- C. overload bit passive
- D. attached bit on ISIS instance
- E. passive-interface Loopback0

Answer: AD

NEW QUESTION 238

Which type of attack is a Protocol attack?

- A. HTTP flood
- B. TFTP flood
- C. SYN flood
- D. Slowloris

Answer: C

Explanation:

Protocol Attacks

Includes SYN floods, fragmented packet attacks, Ping of Death, Smurf DDoS and more. This type of attack consumes actual server resources,

NEW QUESTION 239

A network team has failed to implement IS-IS mult topology. What is the reason for it?

- A. The router did not support VRFs.
- B. The routing process did not support extended metrics.
- C. The router did not have Cisco Discovery Protocol and Cisco Express Forwarding disabled.
- D. The routing process supported Level 1 only.

Answer: B

NEW QUESTION 244

Which technology enables the addition of new wavelengths in a fiber-optic network?

- A. IPoDWDM

- B. CWDM
- C. DWDM
- D. ROADM

Answer: C

Explanation:

Wavelength-division multiplexing (WDM) is a technology which multiplexes a number of optical carrier signals onto a single fiber [1], using different wavelengths of light to carry different signals. This allows for a greater capacity for data transfer and enables the addition of new wavelengths in a fiber-optic network

NEW QUESTION 247

Refer to the exhibit.

```
R1
router bgp 65000
router-id 192.168.1.1
no bgp default ipv4-unicast
neighbor 192.168.1.2 remote-as 65001
```

Which task completes the configuration?

- A. Specify the maximum number of prefixes that R1 receives from neighbor 192.168.1.2.
- B. Specify the source interface in the neighbor statement.
- C. Specify the activate neighbor 192.168.1.2 under the IPv4 address family.
- D. Specify the local-as value in the neighbor statement.

Answer: C

NEW QUESTION 250

Refer to the exhibit.

```
!
router bgp 65001
no synchronization
bgp log-neighbor-changes
neighbor 10.10.10.1 remote-as 4282
neighbor 10.10.10.1 distribute-list 1 out
no auto-summary
!
ip as-path access-list 1 permit ^$
!
```

An engineer is reviewing the BGP configuration. Which routes must be advertised to 10.10.10.1

- A. Local routes are permitted, and routes from other ASNs are denied.
- B. All routes whether local or from other ASNs are denied.
- C. Local routes are denied, and routes from other ASNs are permitted.
- D. All routes whether local or from other ASNs are permitted.

Answer: D

NEW QUESTION 252

A company needs to improve the use of the network resources that is used to deploy internet access service to customers on separate backbone and internet access network. Which two major design models should be used to configure MPLS L3VPNs and internet service in the same MPLS backbone? (Choose two.)

- A. Carriage of full internet routes in a VPN, in the case of internet access VPNS
- B. Internet routing through global routing on a PE router.
- C. Internet access routing as another VPN in the ISP network.
- D. Internet access through leaking of internet routed from the global table into the L3VPN VRF
- E. Internet access for global routing via a separate interface in a VRF

Answer: CE

Explanation:

<http://etutorials.org/Networking/MPLS+VPN+security/Part+II+Advanced+MPLS+VPN+Security+Issues/Chapter+4.+Secu>

NEW QUESTION 253

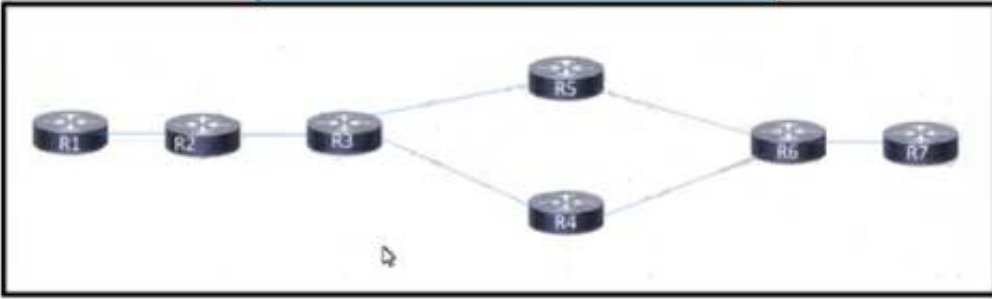
According to RFC5305 on IS-IS extensions for traffic engineering, what is the 4-octet sub-TLV type 10 of extended IS-IS reachability TLV type 22?

- A. TE default metric
- B. maximum reservable link bandwidth
- C. administrative group (color)
- D. IPv4 neighbor address

Answer: B

NEW QUESTION 254

Refer to the exhibit. After a networking team configured this MPLS topology, the supervisor wants to view MPLS labels to verify the path that packets take from router R1 to router R7. The team already issued an ICMP ping to verify connectivity between the devices. Which task must the team perform to allow the supervisor to view the label switch path?

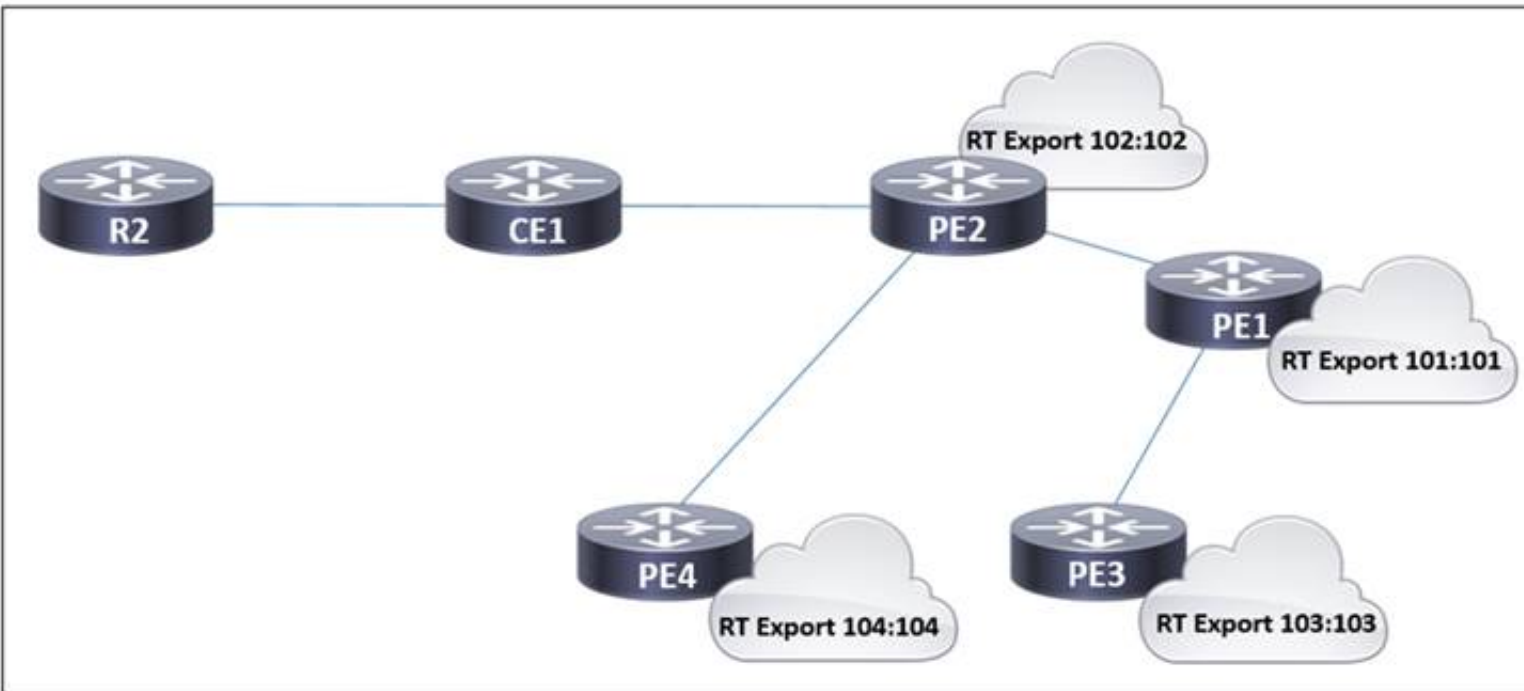


- A. Configure MPLS TE to display the labels in the stack between the head and tail-end routers
- B. Implement MPLS LDP to assign labels to all the routes in the transit path.
- C. Configure MPLS LDP Sync to sync labels from the routing table to the MPLS forwarding table.
- D. Implement MPLS OAM to display the labels for each hop along the path

Answer: D

NEW QUESTION 255

Refer to the exhibit. In the service provider network, routers PE1, PE2, and PE4 have access to the internet and provide access to customer networks. Router PE3 is used for access to other customer systems. In accordance with a new SLA, an engineer is updating settings on this network so that router CE1 accesses the internet via PE1 instead of PE2. Which two tasks must the engineer perform to complete the process? (Choose two.)



- A. On PE1, configure the internet VRF with import route target 102:102.
- B. On PE1 and PE4, configure the internet VRF with import route targets 102:102 and 104:104.
- C. On PE2, configure the internet VRF with import route target 102:102.
- D. On PE2 and PE3, configure the internet VRF with import route target 101:101.
- E. On PE2, configure the CE1 VRF with import route target 101:101.

Answer: AE

Explanation:

> https://www.cisco.com/c/en/us/td/docs/ios-xml/ios/mp_l3_vpns/configuration/15-mt/mp-l3-vpns-15-mt-b

NEW QUESTION 259

.....

Thank You for Trying Our Product

We offer two products:

1st - We have Practice Tests Software with Actual Exam Questions

2nd - Questions and Answers in PDF Format

350-501 Practice Exam Features:

- * 350-501 Questions and Answers Updated Frequently
- * 350-501 Practice Questions Verified by Expert Senior Certified Staff
- * 350-501 Most Realistic Questions that Guarantee you a Pass on Your First Try
- * 350-501 Practice Test Questions in Multiple Choice Formats and Updates for 1 Year

100% Actual & Verified — Instant Download, Please Click
[Order The 350-501 Practice Test Here](#)